

COMMUNITY ALLIANCE

POLICE & COURTS PACKET
KENNEBEC/SOMERSET COUNTIES

*11 separate packets
for each Study Group*

*plus
Correctional
juvenile packets*



54499

Criminal Justice Standards and Goals

The Standards & Goals Program of the Maine Criminal Justice Planning & Assistance Agency has attempted to bring together within these pages a summarized overview of the police and court functions both on a statewide basis and by the individual county or counties involved.

This information is intended to give the citizen membership a general understanding of the parts of the Criminal Justice System; how they are structured and their cost ratios.

This will prove beneficial when the individual committees start to meet in January of 1977 when each group will become much more specific and investigate each functional area in much more detail. At that time you will be able to relate each part to the whole so that a complete integration of the separate studies is possible.

This packet includes both state and county, general and specific information on the Criminal Justice System in Maine.

POLICE PROTECTION SERVICES OF MAINE

Police protection throughout Maine is provided by the Maine State Police, 16 County Sheriff's Offices, and 121 Municipal Police Departments. The 148 law enforcement agencies employ 1,774 full-time sworn personnel to serve an estimated 1,047,000 people distributed over 30,417 square miles. In addition to the sworn personnel, there are 286 full-time civilians providing support services.

From October 31, 1974 to the same date in 1975, there was an increase of 5.1% (86) of law enforcement officers throughout Maine. Many agencies have part-time personnel, working on an as needed basis or working full-time throughout a season.

The grand total of police expenditures for the fiscal year ending on June 30, 1975 or on the date nearest to the end of calendar year 1975, was \$27,232,695; of that amount \$19,991,101 or 73.% was expended by county and municipal governments. Cumberland County and 13 municipalities within it contributed 28.2% of the nearly \$20 million; following in order was Penobscot County (12.4%), York County (11.8%) and Androscoggin County (11.6%). The per capita expenditure for the million plus residents was \$19.09. On a county per capita analysis, only four counties exceeded the state average. They were led by Cumberland at \$28.04 per person which is 47% higher than the state average, and Sagadahoc County which was 40.3% higher at \$26.78.

MUNICIPAL AND SHERIFF'S DEPARTMENTS

The 16 county sheriff departments employ 268 full-time sworn officers and 25 full-time civilian employees to perform their law enforcement function in the state while the 121 municipal police departments account for 1,209 full-time sworn officers and 186 full-time civilian workers. Of these 1,477 full-time sworn officers, Cumberland employs 27% of them and 35% of the full-time civilian employees. The primary assignment of these full-time sworn officers is patrol duty with 63% of them falling into this category. Administrative (13%) and investigative functions (7%) complete the top three activities of this group.

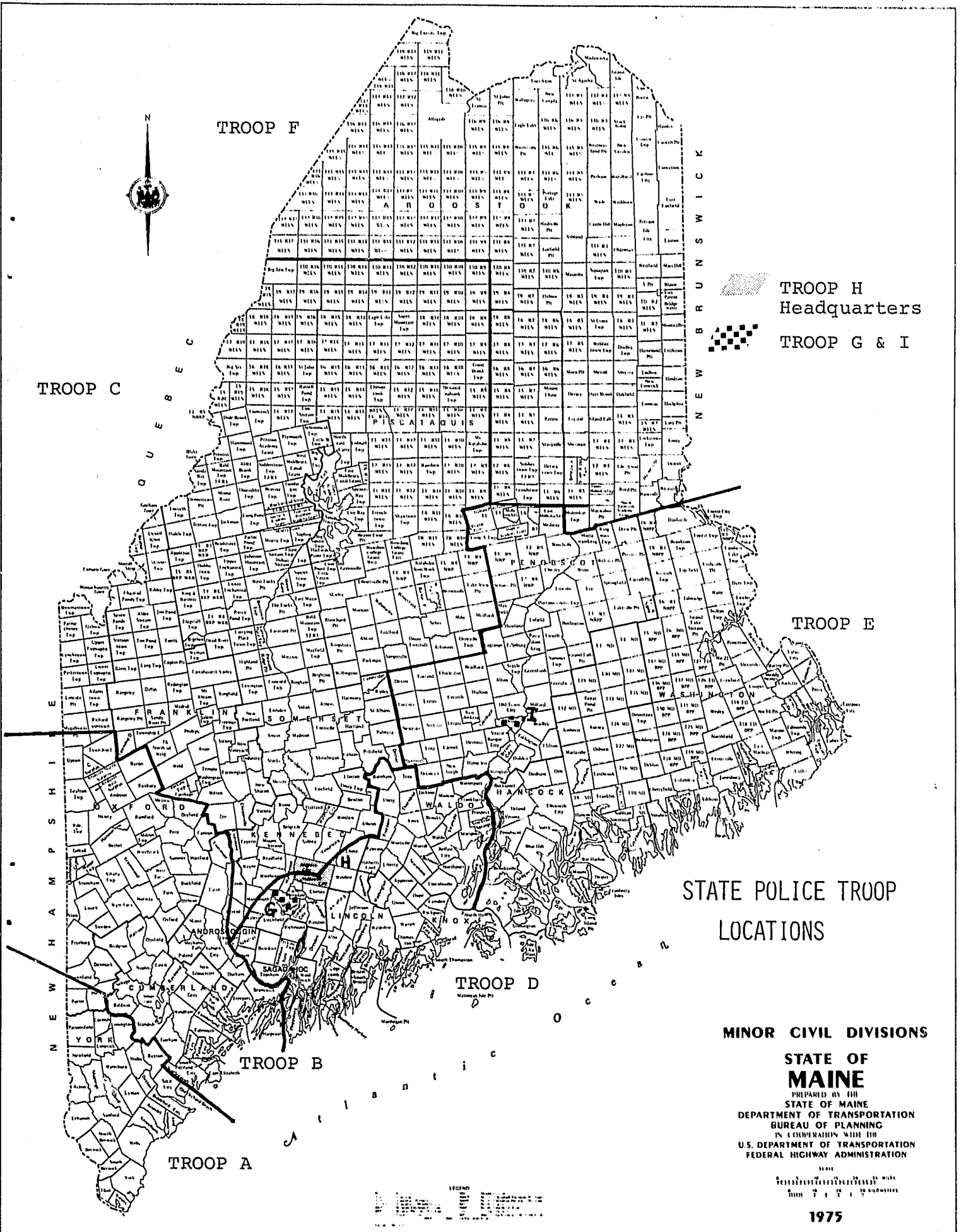
High school diplomas (or high school equivalency certificates) have been earned by 881 of the total 1,477 municipal and county officers. Six individuals in Cumberland County possess graduate degrees while 36 officers (9% of the county total) have undergraduate degrees and another 15% have associate degrees. Penobscot County has the highest percentage of individuals who have started a college education. This 43% exceeds the 41% of all municipal and sheriff's departments. Less than 4% (55 individuals) have not attained a high school diploma or its equivalent.

Of the 966 automobiles used in the law enforcement effort by municipal and sheriff's departments, 42% are department owned, 56% are privately owned and 1% are leased. These 966 automobiles patrol a total of 21,073 miles of roads, one vehicle per 22 miles of road. This coverage varies greatly from county to county with Knox County having one vehicle per 8 miles of roadway to Oxford County with one vehicle per 63 miles of roadway. A total of 120

pickup trucks, vans, motorcycles, snowmobiles, boats and Cushmans supplement these automobiles and assist in reaching areas which otherwise would be difficult or impossible to access.

Of the \$19,991,101 spent on law enforcement at the municipal and county levels, \$5,631,122 (28%) of it was spent in Cumberland County. The statewide per capita expenditure for municipalities and counties in this endeavor was \$19.09 and was exceeded only by Cumberland County (\$28.04), Androscoggin (\$24.38), Sagadahoc (\$26.78), and York Counties (\$19.63).

Between January 1 and December 31, 1975, there were 46,661 index offenses reported, of which 4,765 were unfounded. Of the remaining 41,896 reported offenses, 14,077 (31% of the state total) were reported in Cumberland County and 8,099, or 24% of the state total of 33,696 actual arrests (8,283 for Part I offenses and 25,413 for Part II offenses) were made in the same geographic area.



TROOP F

TROOP H
Headquarters

TROOP G & I

TROOP C

TROOP E

STATE POLICE TROOP
LOCATIONS

MINOR CIVIL DIVISIONS

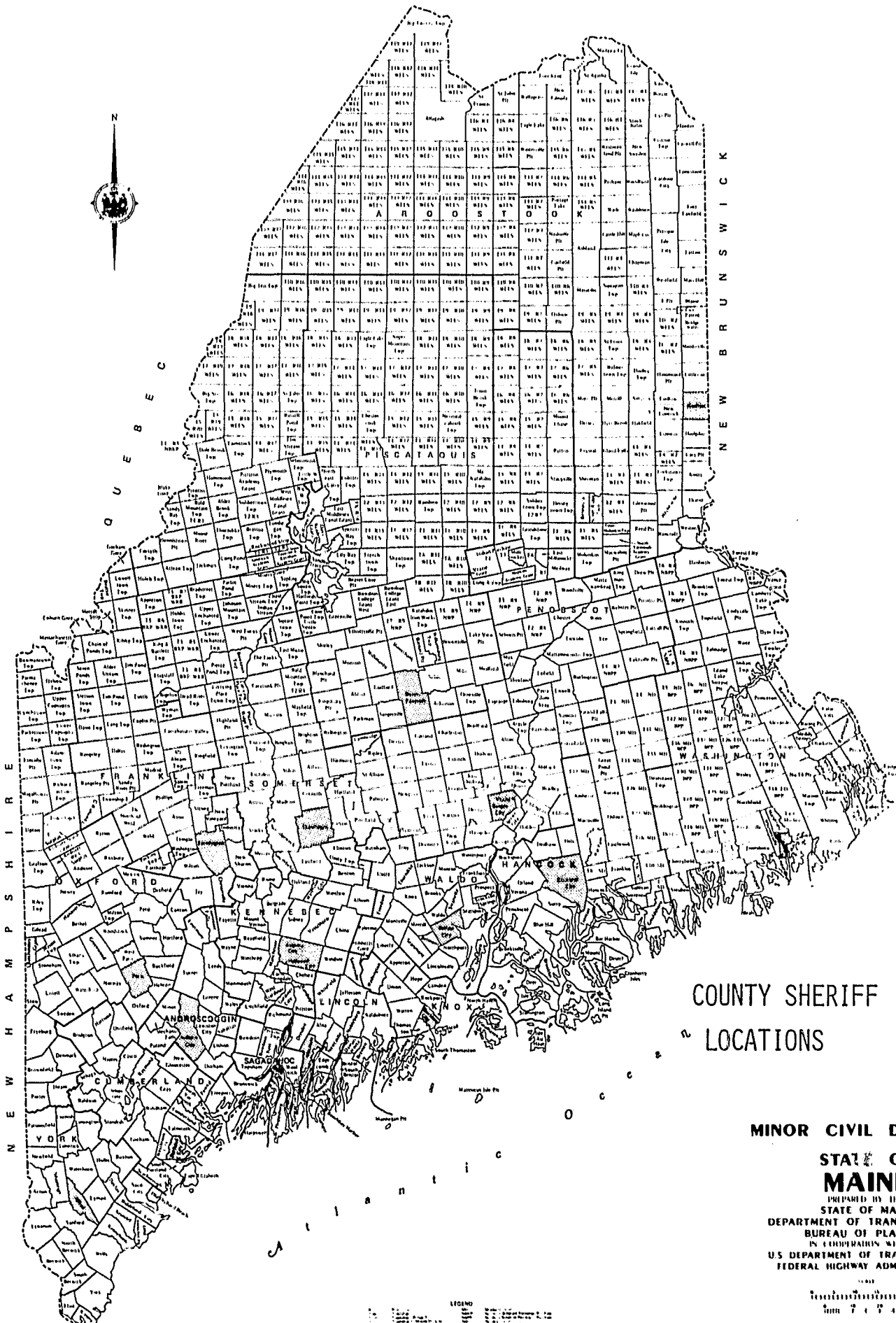
STATE OF
MAINE

PREPARED BY THE
STATE OF MAINE
DEPARTMENT OF PLANNING
BUREAU OF PLANNING
IN COOPERATION WITH THE
U.S. DEPARTMENT OF TRANSPORTATION
FEDERAL HIGHWAY ADMINISTRATION

1975

LEGEND

- Headquarters
- Troop Locations
- Minor Civil Divisions



COUNTY SHERIFF
LOCATIONS

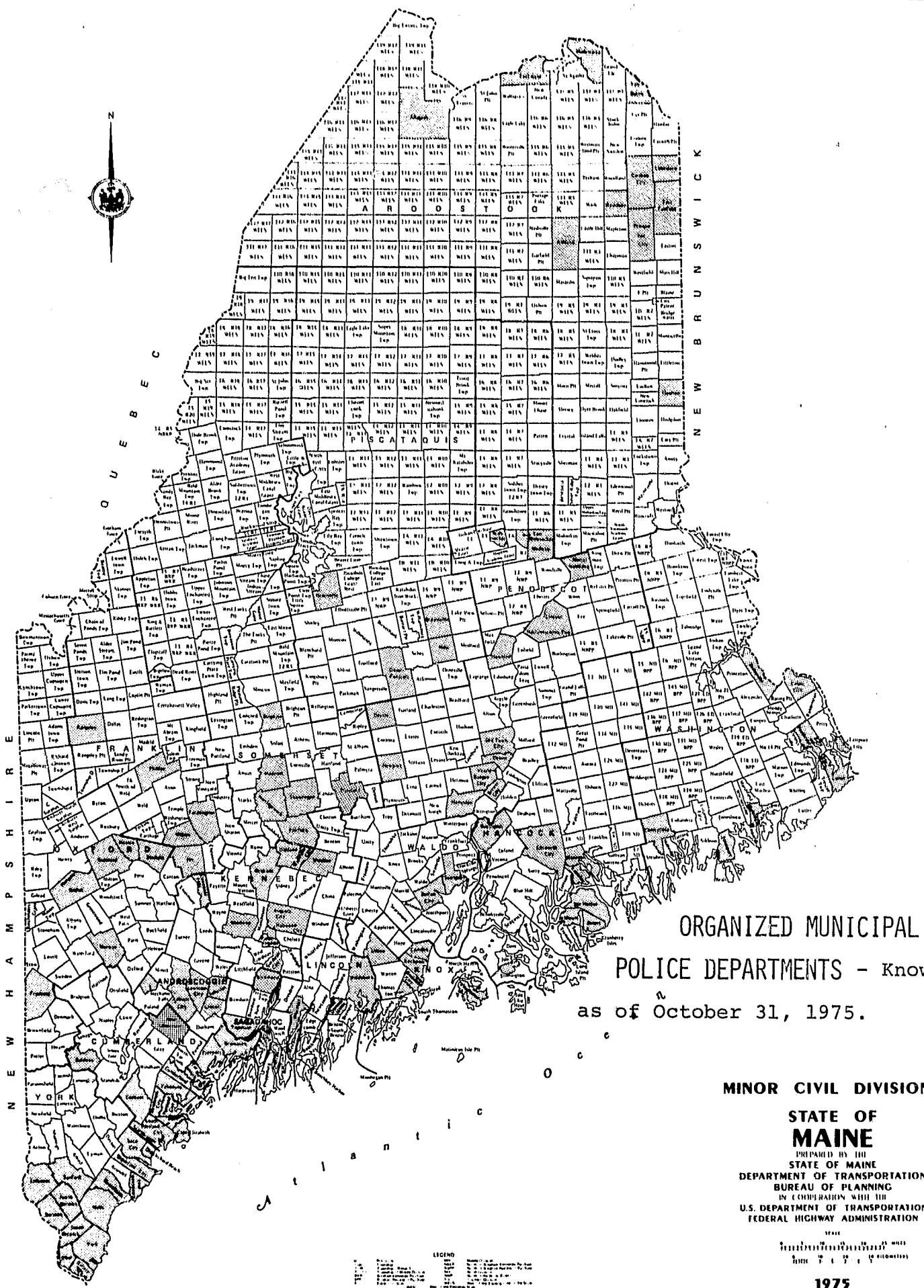
MINOR CIVIL DIVISIONS

STATE OF
MAINE

PREPARED BY THE
STATE OF MAINE
DEPARTMENT OF TRANSPORTATION
BUREAU OF PLANNING
IN COOPERATION WITH THE
U.S. DEPARTMENT OF TRANSPORTATION
FEDERAL HIGHWAY ADMINISTRATION

MAINE STATE PLANNING BOARD
1975

LEGEND
[Detailed legend text describing symbols and colors used on the map]



**ORGANIZED MUNICIPAL
POLICE DEPARTMENTS - Known
as of October 31, 1975.**

MINOR CIVIL DIVISIONS
STATE OF MAINE
PREPARED BY THE
STATE OF MAINE
DEPARTMENT OF TRANSPORTATION
BUREAU OF PLANNING
IN COOPERATION WITH THE
U.S. DEPARTMENT OF TRANSPORTATION
FEDERAL HIGHWAY ADMINISTRATION

LEGEND

1. Organized Municipal Police Department	2. Minor Civil Division
3. Unincorporated Area	4. Indian Reservation
5. Water	6. Lake
7. River	8. Stream
9. Road	10. Boundary

STATE OF MAINE PROFILE

JURISDICTION	1975 EST. POPULATION		1975 POPULATION DENSITY		LAND AREA IN SQUARE MILES		MEDIAN FAMILY INCOME '70 CENSUS		INDEX CRIMES REPORTED - 1975		INDEX CRIMES PER 1,000 POPULATION	
	No.	%	No.	Rank	No.	%	Amt. (\$)	Rank	No.	%	Rate	Rank
Androscoggin	95,014	9.1	197	2	482.8	1.6	8,273	5	3,716	8.9	39.21	4
Aroostook	96,542	9.2	15	12	6,450.7	21.2	6,929	15	2,121	5.1	21.97	15
Cumberland	200,824	19.2	227	1	884.7	2.9	9,289	1	13,077	31.2	65.11	1
Franklin	24,034	2.3	14	13	1,758.9	5.8	7,993	8	602	1.5	25.05	13
Hancock	37,680	3.6	23	10	1,606.7	5.3	7,607	10	1,270	3.0	33.70	10
Kennebec	100,106	9.6	112	4	889.9	2.9	8,853	2	3,842	9.2	38.38	6
Knox	31,671	3.0	86	6	368.0	1.2	7,362	13	1,216	2.9	38.39	5
Lincoln	21,997	2.1	48	7	457.3	1.5	7,847	9	807	1.9	36.69	8
Oxford	44,000	4.2	21	11	2,060.7	6.8	8,060	7	972	2.3	22.09	14
Penobscot	131,981	12.6	40	8	3,339.5	11.0	8,301	4	4,734	11.3	35.86	9
Piscataquis	18,027	1.7	5	16	3,809.5	12.5	7,220	14	348	0.8	19.30	16
Sagadahoc	25,358	2.4	99	5	256.3	0.8	8,112	6	1,281	3.1	50.52	2
Somerset	42,263	4.0	11	15	3,903.9	12.8	7,516	11	1,669	4.0	39.49	3
Waldo	25,969	2.5	36	9	726.2	2.4	7,510	12	750	1.8	28.88	12
Washington	31,773	3.0	13	14	2,420.7	8.0	6,137	16	940	2.2	29.58	11
York	119,761	11.4	120	3	1,001.3	3.3	8,495	3	4,541	10.8	37.91	7
TOTAL	1,047,000		34		30,417.1		7,844		41,896		40.01	

Maine Criminal Justice
Data Center, June 1976

MANPOWER ANALYSIS
BY COUNTY
STATE OF MAINE

COUNTY	FULL TIME SWORN PERSONNEL										FULL TIME CIVILIAN			# IN DEPT. 6 MOS. OR LESS	# TO RETIRE WITHIN 3 YRS.	# SGT OR HIGHER
	MALE	FEM	TOT	ADM	INV	JUV	DIS	PAT	OTH	VAC	MALE	FEM	TOT			
Androscoggin	154	4	158	9	14	8	3	116	8	3	16	12	28	7	5	29
Aroostook	98	1	99	18	10	2	5	57	7	3	6	4	10	7	7	32
Cumberland	383	10	393	25	23	25	21	242	57	7	38	36	74	9	40	71
Franklin	32	1	33	4	1	-	4	18	6	2	-	1	1	3	3	5
Hancock	42	2	44	8	5	-	5	26	-	-	3	4	7	4	1	19
Kennebec	111	5	116	23	9	4	3	68	9	2	6	10	16	6	6	33
Knox	45	1	46	7	1	-	4	29	5	2	9	1	10	3	1	14
Lincoln	28	1	29	7	3	-	2	17	-	1	2	3	5	4	2	15
Oxford	43	-	43	5	8	1	5	20	4	-	3	2	5	4	2	16
Penobscot	156	4	160	21	9	4	5	111	10	6	14	8	22	4	15	60
Piscataquis	16	1	17	5	1	-	3	7	1	-	-	-	-	1	-	7
Sagadahoc	43	1	44	4	3	1	3	33	-	1	2	4	6	4	3	11
Shermeset	46	2	48	7	3	-	6	27	5	1	3	1	4	5	3	10
Walfo	20	-	20	4	3	1	-	12	-	2	4	1	5	3	-	6
Washington	43	-	43	12	-	-	3	28	-	4	-	4	4	5	-	16
York	182	2	184	33	10	3	14	120	4	4	5	9	14	12	9	51
State Police	317	-	317	65	35	-	10	207	-	2	44	38	82	21	54	65
TOTAL STATE	1759	35	1794	257	138	49	96	1138	116	40	155	138	293	102	151	460

BEST AVAILABLE COPY

82

1975 EXPENDITURES FOR
POLICE PROTECTION

COUNTY	1975 EST. POPULATION	COUNTY & MUNICIPAL EXPENDITURES	PER CAPITA EXPENDITURES	
			COUNTY & MUNICIPAL	COUNTY & MUNICIPAL & STATE
Androscoggin	95,014	\$ 2,316,720	\$24.38	\$31.29
Aroostook	96,542	1,239,925	12.84	19.75
Cumberland	200,824	5,631,122	28.04	34.95
Franklin	24,034	314,929	13.10	20.01
Hancock	37,680	543,222	14.42	21.33
Kennebec	100,106	1,557,652	15.56	22.47
Knox	31,671	503,932	15.91	22.82
Lincoln	21,997	370,081	16.82	23.73
Oxford	44,000	596,332	13.55	20.46
Penobscot	131,981	2,472,573	18.73	25.64
Piscataquis	18,027	182,505	10.12	17.03
Sagadahoc	25,358	679,083	26.78	33.69
Somerset	42,263	476,023	11.26	18.17
Waldo	25,969	352,224	13.56	20.47
Washington	31,773	403,569	12.70	19.61
York	--119,761	2,351,209	19.63	26.54
Sub-Total	<u>1,047,000</u>	<u>\$19,991,101</u>	<u>\$19.09</u>	\$ -
State Police	1,047,000	7,241,594	6.91	-
Grand Total	1,047,000	\$27,232,695	\$26.00	\$26.00

EXISTING CRIMINAL JUSTICE RESOURCES IN KENNEBEC COUNTY

Kennebec County, with an area of 889.9 square miles, is located in south central Maine - the site of the State Capital at Augusta. The 95,247* resident population are dispersed throughout the County, but primarily within the twenty-six (26) towns, four (4) cities, and one (1) organized township in the County. Kennebec County is a prominent industrial, commercial, agricultural, and recreational region.

Law Enforcement Resources

Police services are provided the citizens of Kennebec County by eight (8) municipal police departments, patrol 228.0 square miles within their jurisdiction and provide services to 66,107 citizens. The remaining 661.9 square miles are patrolled by the Kennebec County Sheriff's Department and the Maine State Police who share concurrent jurisdiction. The 29,140 persons who do not live in a municipality with an organized law enforcement agency. depend upon the county sheriff and the Maine State Police for police services.

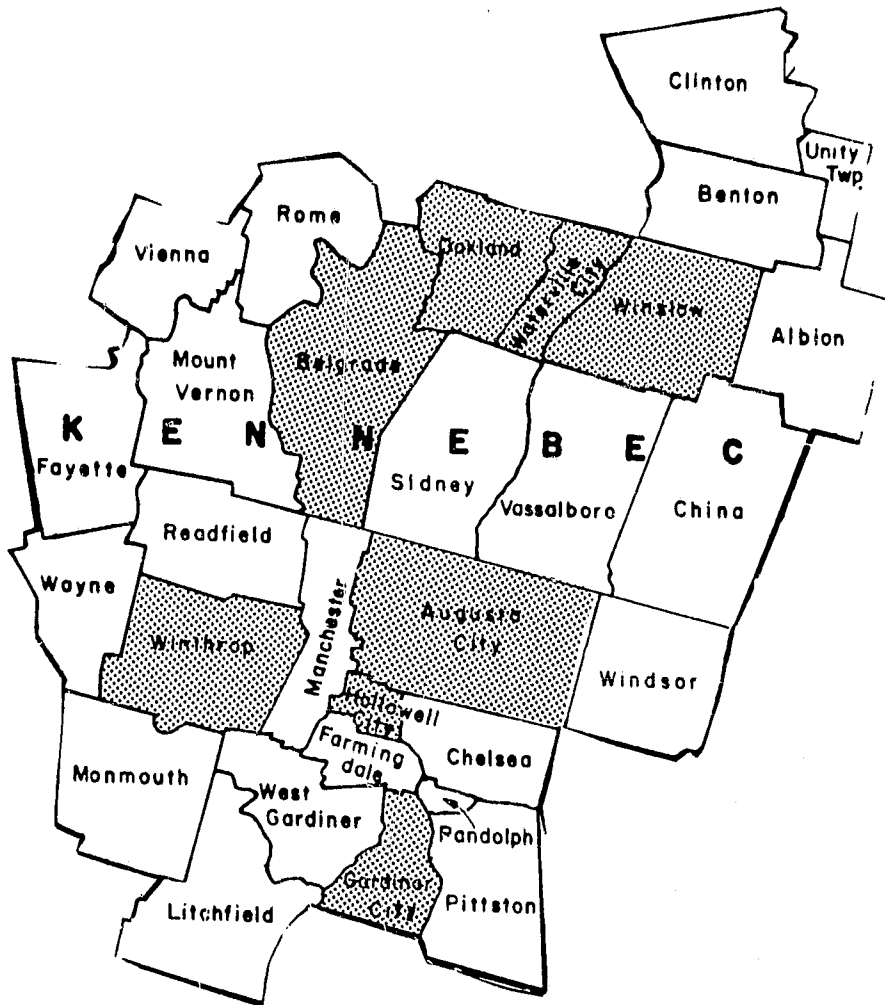
The next five (5) pages will provide you with the following information: 1) county "fact sheet", 2) map of Kennebec County designating those municipalities having an organized police department, 3) Kennebec County demographic information, 4) the county's police manpower data, and 5) the expenditures for law enforcement in the county.

*1973 Maine Economic Data Book; Maine Department of Commerce and Industry.

KENNEBEC COUNTY

LAND AREA: 889.9
COUNTY SEAT: AUGUSTA
POPULATION: 95,247
ECONOMIC BASE: GOVERNMENT
URBAN OR RURAL: 60.5% URBAN - 35.5% RURAL
ROAD MILES: 1,551
OF TOWNS AND CITIES: 29
CRIME FACTORS:

ANNUAL CRIME RATE/1,000 POP.	TOTAL INDEX CRIME	MURDER	RAPE	ROBBERY
38.38	3,842	1	12	34
AGGRAVATED ASSAULT	BURGLARY	LARCENY	MOTOR VEHICLE THEFT	% TOTAL CLEARED BY ARREST
176	1,154	2,283	182	21.16



KENNEBEC COUNTY PROFILE

JURISDICTION	1975 EST. POPULATION		1975 POPULATION DENSITY		LAND AREA IN SQUARE MILES		MEDIAN FAMILY INCOME '70 CENSUS Amt. (\$)		INDEX CRIMES REPORTED - 1975		INDEX CRIMES PER 1,000 POPULATION	
	No.	%	No.	Rank	No.	%	Amt. (\$)	Rank	No.	%	Rate	Rank
Augusta	22,300	22.3	399.6	4	55.8	6.3	9,253	2	1,472	38.3	66.00	1
Belgrade	1,302	1.3	29.9	9	43.6	4.9	8,000	9	*	*	*	*
Gardiner	7,087	7.1	448.5	3	15.8	1.8	8,477	6	364	9.5	51.43	2
Hallowell	3,059	3.1	577.2	2	5.3	0.6	8,825	4	82	2.2	26.81	6
Oakland	3,714	3.7	142.8	7	26.0	2.9	8,169	8	155	4.0	41.73	5
Waterville	18,700	18.7	1,385.1	1	13.5	1.5	8,761	5	934	24.3	49.95	3
Winslow	7,751	7.7	206.1	5	37.6	4.2	9,125	3	159	4.1	20.51	7
Winthrop	4,554	4.5	149.8	6	30.4	3.4	11,067	1	199	5.2	43.70	4
Sh. Office	31,639	31.6	47.8	8	661.9	74.4	8,365	7	215	5.6	6.53	8
St. Police									262	6.8	2.61	9
TOTAL	100,106		112.4		889.9		8,853		3,842		38.38	

MCJDC
May, 1976

*File UCR Report through the Sheriff's Office.

MANPOWER ANALYSIS
MUNICIPAL AND SHERIFF'S DEPARTMENTS
KENNEBEC COUNTY

UNIT OF GOVERNMENT	FULL TIME SWORN PERSONNEL										FULL TIME CIVILIAN			# IN DEPT. 6 MOS. OR LESS	# TO RETIRE WITHIN 3 YRS.	# SGT OR HIGHER
	MALE	FEM	TOT	ADM	INV	JUV	DIS	PAT	OTH	VAC	MALE	FEM	TOT			
Augusta	37	3	40	14	3	1	-	19	*	-	1	4	5	1	1	14
Belgrade	1	-	1	-	-	-	-	1	-	-	-	-	-	-	-	-
Gardiner	10	1	11	2	-	1	-	8	-	1	-	1	1	1	1	5
Hallowell	4	-	4	1	-	-	-	3	-	-	-	-	-	1	-	2
Oakland	3	-	3	1	-	-	-	2	-	1	-	-	-	1	-	1
Waterville	31	1	32	2	2	2	-	24	*	-	3	2	5	-	2	8
Winslow	5	-	5	1	-	-	-	4	-	-	-	-	-	-	-	2
Winthrop	7	-	7	1	-	-	-	6	-	-	1	2	3	1	-	1
Sh. Office	13	-	13	1	4	-	3	1	*	-	1	1	2	1	2	-
Total County	111	5	116	23	9	4	3	68	9	2	6	10	16	6	6	33

*Augusta has 3 Meter Maids.

*Waterville has 1 Drug Officer and 1 Operations Officer.

*Sheriff's Office has 4 Turnkeys.

1975 EXPENDITURES FOR POLICE PROTECTION

GOVERNMENT UNIT	1975 EST. POPULATION	COUNTY AND MUNICIPAL EXPENDITURES	PER CAPITA EXPENDITURES
Hancock Sheriff	18,402	\$ 111,875	\$ 6.08
Bar Harbor	4,047	\$ 111,249	\$ 27.49
Bucksport	4,090	\$ 82,620	\$ 20.20
Ellsworth	4,849	\$ 125,976	\$ 25.98
Mt. Desert	1,659	\$ 49,065	\$ 29.58
Southwest Harbor	1,657	\$ 47,494	\$ 28.66
Stonington	1,291	\$ 14,943	\$ 11.57
Kennebec Sheriff	31,639	\$ 82,564	\$ 2.61
Augusta	22,300	\$ 500,666	\$ 22.45
Belgrade	1,302	\$ 13,647	\$ 10.48
Gardiner	7,087	\$ 158,140	\$ 22.31
Hallowell	3,059	\$ 49,499	\$ 16.81
Oakland	3,714	\$ 45,184	\$ 12.17
Waterville	18,700	\$ 530,018	\$ 28.34
Winslow	7,751	\$ 87,327	\$ 11.27
Winthrop	4,554	\$ 90,607	\$ 19.90
Knox Sheriff	10,816	\$ 84,918	\$ 7.85
Camden	4,491	\$ 75,113	\$ 16.73
Rockland	9,073	\$ 229,901	\$ 25.34
Rockport	2,067	\$ 41,516	\$ 20.09
Thomaston	2,900	\$ 50,120	\$ 17.28
Vinalhaven	1,135	\$ 22,364	\$ 19.70
Lincoln Sheriff	12,633	\$ 164,213	\$ 13.00
Boothbay Harbor	2,100	\$ 59,471	\$ 28.32
Damariscotta	1,264	\$ 36,588	\$ 28.95
Waldoboro	3,500	\$ 52,003	\$ 14.86
Wiscasset	2,500	\$ 57,806	\$ 23.12
Oxford Sheriff	16,088	\$ 180,010	\$ 11.19
Bethel	2,220	\$ 18,244	\$ 8.22
Dixfield	2,188	\$ 26,449	\$ 12.09
Fryeburg	2,208	\$ 13,408	\$ 6.07
Mexico	4,362	\$ 60,755	\$ 13.93
Norway	3,639	\$ 44,258	\$ 12.16
Paris	3,815	\$ 33,174	\$ 8.70
Rumford	9,480	\$ 220,034	\$ 23.21

EXISTING CRIMINAL JUSTICE RESOURCES IN SOMERSET COUNTY

Somerset County, with an area of 3,903.9 square miles, is the third largest county in area in Maine. It extends from the northwest border of Maine with the Province of Quebec, south into the center of the State to the Kennebec and Waldo County boundaries. The county population of 40,597 residents is dispersed throughout the twenty-four (24) towns, twelve (12) plantation, two (2) unorganized plantations, and two (2) unorganized townships contained in Somerset County.* Agriculture, industry, and commerce are concentrated in the southern section of the county, with lumbering, limited farming, and the vacation travel business important in the northern section.

Law Enforcement Resources

Police services are provided the citizens of Somerset County by six (6) municipal police departments, patrol 308.9 square miles within their jurisdiction and provide services to 25,055 citizens. The remaining 3595.0 square miles are patrolled by the Somerset County Sheriff's Department and the Maine State Police who share concurrent jurisdiction. The 15,542 persons who do not live in a municipality with an organized law enforcement agency, depend upon the county sheriff and the Maine State Police for police services.

The next five (5) pages will provide you with the following information: 1) county "fact sheet", 2) map of Somerset County designating those municipalities having an organized police department, 3) Somerset County demographic information, 4) the county's police manpower data, and 5) the expenditures for law enforcement in the county.

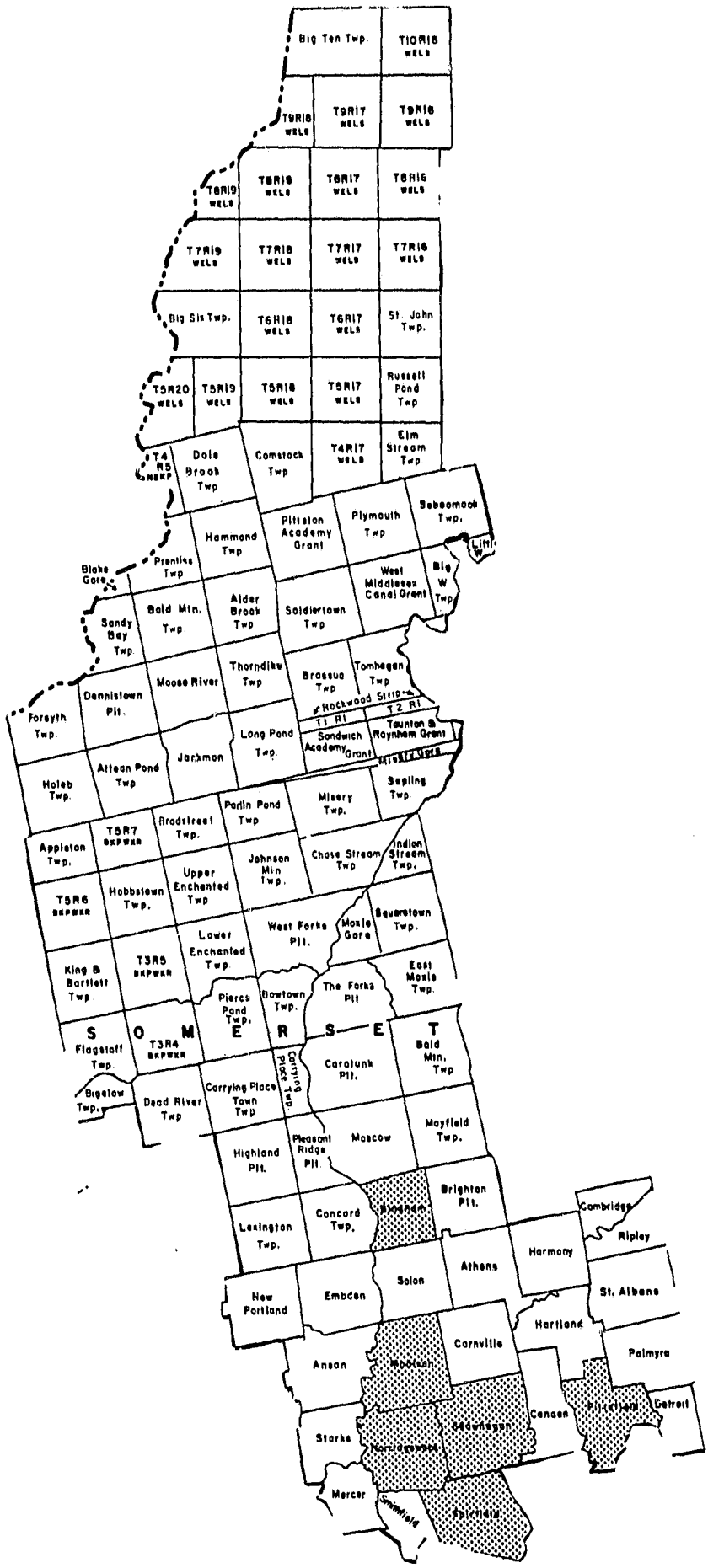
*1973 Maine Economic Date Book; Maine Department of Commerce and Industry.

SOMERSET COUNTY

LAND AREA: 3,903.9
COUNTY SEAT: SKOWHEGAN
POPULATION: 40,597
ECONOMIC BASE:
RURAL OR URBAN: 40.8% URBAN - 59.2% RURAL
ROAD MILES: 1,423
OF TOWNS AND CITIES: 26

CRIME FACTORS:

ANNUAL CRIME RATE/1,000 POP.	TOTAL INDEX CRIMES	MURDER	RAPE	ROBBERY
39.49	1,669	-	4	13
AGGRAVATED ASSAULT	BURGLARY	LARCENY	MOTOR VEHICLE THEFT	% TOTAL CLEARED BY ARREST
70	793	711	78	16.66



V E R M O N T

SOMERSET COUNTY PROFILE

JURISDICTION	1975 EST. POPULATION		1975 POPULATION DENSITY		LAND AREA IN SQUARE MILES		MEDIAN FAMILY INCOME '70 CENSUS		INDEX CRIMES REPORTED - 1975		INDEX CRIMES PER 1,000 POPULATION	
	No.	%	No.	Rank	No.	%	Amt. (\$)	Rank	No.	%	Rate	Rank
Bingham	1,254	3.0	34.8	6	36.0	0.9	6,723	6	*	*	*	*
Fairfield	6,022	14.2	104.1	2	57.8	1.5	8,008	4	218	13.1	36.20	3
Madison	4,533	10.7	84.9	4	53.4	1.4	7,744	5	55	3.3	12.13	5
Norridgewock	1,964	4.6	39.5	5	49.7	1.3	8,504	2	*	*	*	*
Pittsfield	4,800	11.4	95.4	3	50.3	1.3	8,650	1	252	15.1	52.50	1
Skowhegan	8,000	18.9	129.7	1	61.7	1.6	8,021	3	410	24.6	51.25	2
Sh. Office	15,690	37.2	4.4	7	3,595.0	92.0	6,649	7	670	40.1	35.44	4
St. Police									64	3.8	1.51	6
TOTAL	42,263		10.8		3,903.9		7,516		1,669		39.49	

MCJDC
May, 1976

*File UCR Report through the Sheriff's Office.

MANPOWER ANALYSIS
MUNICIPAL AND SHERIFF'S DEPARTMENTS
SOMERSET COUNTY

UNIT OF GOVERNMENT	FULL TIME SWORN PERSONNEL										FULL TIME CIVILIAN			# IN DEPT. 6 MOS. OR LESS	# TO RETIRE WITHIN 3 YRS.	# SGT OR HIGHER
	MALE	FEM	TOT	ADM	INV	JUV	DIS	PAT	OTH	VAC	MALE	FEM	TOT			
Bingham	1	-	1	-	-	-	-	1	-	-	-	-	-	-	-	1
Fairfield	5	-	5	2	-	-	-	3	-	1	-	-	-	1	1	1
Madison	4	1	5	1	-	-	-	4	-	-	-	-	-	-	-	1
Norridgewock	3	-	3	1	-	-	-	2	-	-	-	-	-	1	-	1
Pittsfield	6	-	6	1	1	-	-	4	-	-	3	1	4	1	-	2
Skowhegan	13	-	13	1	-	-	3	9	-	-	-	-	-	2	1	2
Sh. Office	14	1	15	1	2	-	3	4	*	-	-	-	-	-	1	2
Total County	46	2	48	7	3	-	6	27	5	1	3	1	4	5	3	10

*Sheriff's Office has 3 Turnkeys, 1 Cook and 1 Matron.

50

1975 EXPENDITURES FOR POLICE PROTECTION

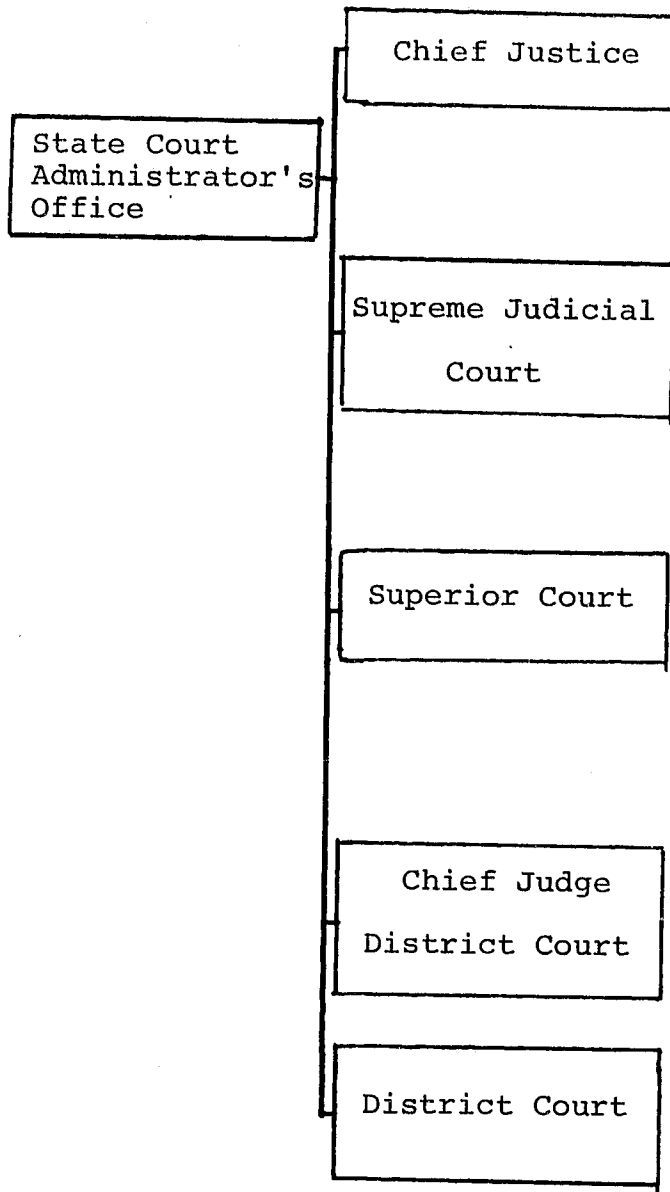
GOVERNMENT UNIT	1975 EST. POPULATION	COUNTY AND MUNICIPAL EXPENDITURES	PER CAPITA EXPENDITURES
Penobscot Sheriff	35,521	\$ 102,269	\$ 2.88
Bangor	34,300	\$ 948,719	\$ 27.66
Brewer	9,787	\$ 283,353	\$ 28.95
Dexter	3,920	\$ 77,737	\$ 19.83
East Millinocket	2,701	\$ 73,063	\$ 27.05
Hampden	4,650	\$ 84,129	\$ 18.09
Howland	1,468	\$ 14,697	\$ 10.01
Lincoln	5,008	\$ 63,280	\$ 12.64
Mattawamkeag	988	\$ 19,012	\$ 19.24
Medway	1,491	\$ 15,294	\$ 10.26
Millinocket	7,968	\$ 177,216	\$ 22.24
Newport	2,260	\$ 34,066	\$ 15.07
Old Town	9,532	\$ 179,154	\$ 18.80
Orono	10,513	\$ 97,417	\$ 9.27
U/M Orono	N/A	\$ 303,167	-
Piscataquis Sheriff	7,419	\$ 63,125	\$ 8.51
Brownville	1,490	\$ 22,791	\$ 15.30
Dover-Foxcroft	4,624	\$ 42,711	\$ 9.24
Greenville	1,894	\$ 13,176	\$ 6.96
Milo	2,600	\$ 40,702	\$ 15.65
Sagadahoc Sheriff	8,172	\$ 137,672	\$ 16.85
Bath	9,570	\$ 397,221	\$ 41.51
Richmond	2,186	\$ 47,549	\$ 21.75
Topsham	5,430	\$ 96,641	\$ 17.80
* Somerset Sheriff *	15,690	\$ 115,472	\$ 7.36
Bingham	1,254	\$ 11,973	\$ 9.55
Fairfield	6,022	\$ 93,541	\$ 15.53
Madison	4,533	\$ 43,391	\$ 9.57
Norridgewock	1,964	\$ 10,822	\$ 5.51
Pittsfield	4,800	\$ 85,313	\$ 17.77
Skowhegan	8,000	\$ 115,511	\$ 14.44
Waldo Sheriff	16,207	\$ 194,274	\$ 11.99
Belfast	6,669	\$ 136,870	\$ 20.52
Searsport	1,951	\$ 21,080	\$ 10.80

THE MAINE COURT SYSTEM, PROSECUTION AND DEFENSE

As of the present time, the Judicial Department of Maine, authorized by the state constitution and established by various laws enacted by the Legislature, consists of the Supreme Judicial Court, the Superior Court, the District Court, and the Judges of Probate. As of July 1, 1976, the Supreme Court, the highest court, consists of a Chief Justice and six Associate Justices. The court of general jurisdiction, or trial court, is the Superior Court. Fourteen justices make up this court which sits in all counties. The District Court, the court of limited jurisdiction in Maine, is made up of a Chief Justice, four judges at-large, and 15 additional Judges. The District Court sits in 33 locations throughout the state. All of the judges in the system are appointed by the Governor for seven year terms, except the part-time Probate Judges who are elected to their offices in their respective counties.

The prosecution function in Maine is handled locally by elected full-time District Attorneys, and at the state level by the Department of Attorney General. Provision of counsel to indigent defendants is carried out entirely by private counsel, appointed by the court and paid by the state.

State of Maine Court System



The Work of the Supreme Judicial Court

The Maine Supreme Judicial Court consists of seven Justices, one of whom is the Chief Justice. The Supreme Court sits primarily as "The Law Court" and hears appeals from decisions of the Superior Court and indirectly from the Probate Courts and the District Courts. It also hears appeals from certain state administrative agencies such as the Public Utilities Commission and the Board of Environmental Protection. Sittings of the court for the hearing of oral arguments of appeals are held during eight months of the year at Portland, Maine. Almost all of the decisions of the Maine Supreme Judicial Court are in the form of written opinions.

The workload of the Supreme Judicial Court has risen substantially since 1964. In that year, the number of appeals filed with the court totaled 65, while the total number in 1975 rose to 268. Also, while the size of the court, six justices, remained the same during this ten year period, the number of cases actually completed by the court rose from 57 in 1964 to 149 in 1975. Despite this increased output, the caseload increase has caused the court backlog to grow. The Supreme Judicial Court is funded by appropriations from the state legislature.

The cost of the Supreme Judicial Court System for the fiscal year ending June 30, 1976 was as follows:

Salary and Wages	\$294,154
All other	207,678
Total	<u>\$501,832</u>

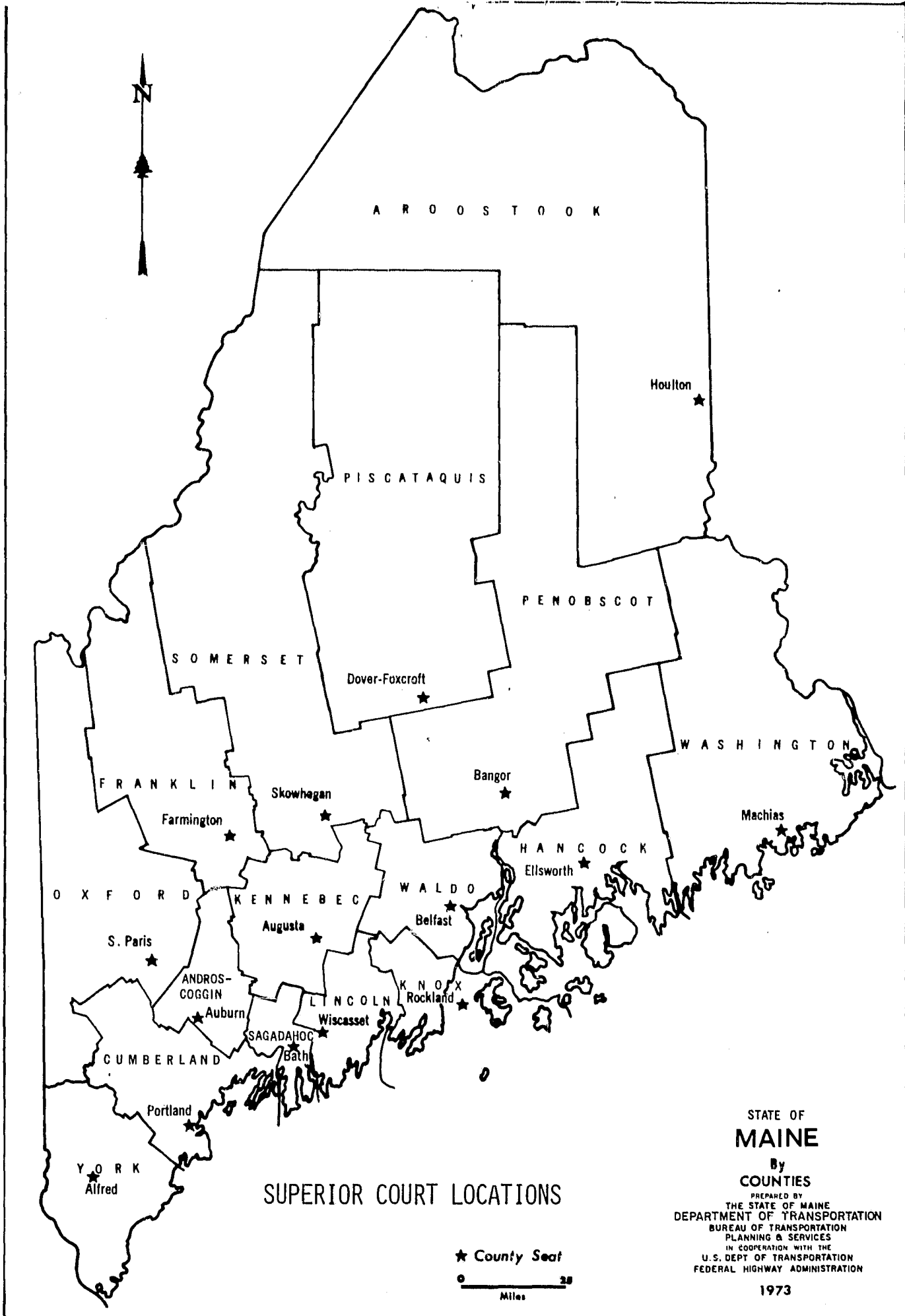
The Work of the Superior Court

The Superior Court is Maine's trial court of general jurisdiction. It hears serious criminal cases and misdemeanor cases transferred from the District Court under the transfer statute. It has unlimited jurisdiction in civil cases. Jury trials take place in the Superior Court and it hears appeals from the District Court and the Probate Court. The Superior Court also hears appeals from most state and local administrative agencies. There are 14 Superior Court Justices and one active justice who hears cases occasionally. These Justices hear cases in all 16 counties.

In 1974 the number of cases entered during the year was 14,604. During that period, 12,879 cases were completed for a net increase of 1,825 cases. In 1975, there were 13,762 cases entered while 15,467 cases were completed for a net reduction to the backlog of cases pending of 1,705. Due to the programs initiated by the Administrative Office of the Courts, the accumulated backlog in the Superior Court was eliminated in 1976. The Superior Court is funded by appropriations from the legislature.

The costs of the Superior Court in Maine for the fiscal year ending June 30, 1976 was as follows:

Salaries and Wages	\$589,564
Other	127,266
Pensions	125,481
Salaries and Wages	70,203
Other	28,495
Total	<u>\$941,009</u>



SUPERIOR COURT LOCATIONS

★ County Seat
 0 ————— 25
 Miles

STATE OF
MAINE

By
COUNTIES

PREPARED BY
 THE STATE OF MAINE
 DEPARTMENT OF TRANSPORTATION
 BUREAU OF TRANSPORTATION
 PLANNING & SERVICES
 IN COOPERATION WITH THE
 U.S. DEPT. OF TRANSPORTATION
 FEDERAL HIGHWAY ADMINISTRATION

1973

The Work of the District Court

The Maine District Court has been functioning since 1965 as a statewide court of modern organization and practice. It operates under the administrative control of a Chief Judge and is housed, in most cases, in its own quarters.

The District Court exercises a large criminal jurisdiction over misdemeanors, hearings for probable cause in felony matters, pleas of guilty in felony cases, all traffic cases, and other miscellaneous criminal proceedings. Sitting in chambers, this court serves as the juvenile court and hears commitments to mental institutions. The District Court also has civil jurisdiction up to \$20,000 and jurisdiction in domestic relations, civil disclosures and small claims. The court consists of 19 District Judges in addition to the Chief Judge.

Since FY 1971 the total caseload in the District Court has risen over 33% (from 122,184 cases to 163,284 cases). Since 1969, the increase has been over 60%. Interestingly, the civil caseload has remained quite stable during this time. Traffic cases, which have increased over 50% since FY 1971, and juvenile cases, which have increased over 70% since FY 1971, make up most of the caseload increase since FY 1971.

It is important to note that the caseload difference between FY 1973 and FY 1974 and FY 1975 was very slight. It is too early to tell whether this is a pattern which will continue.

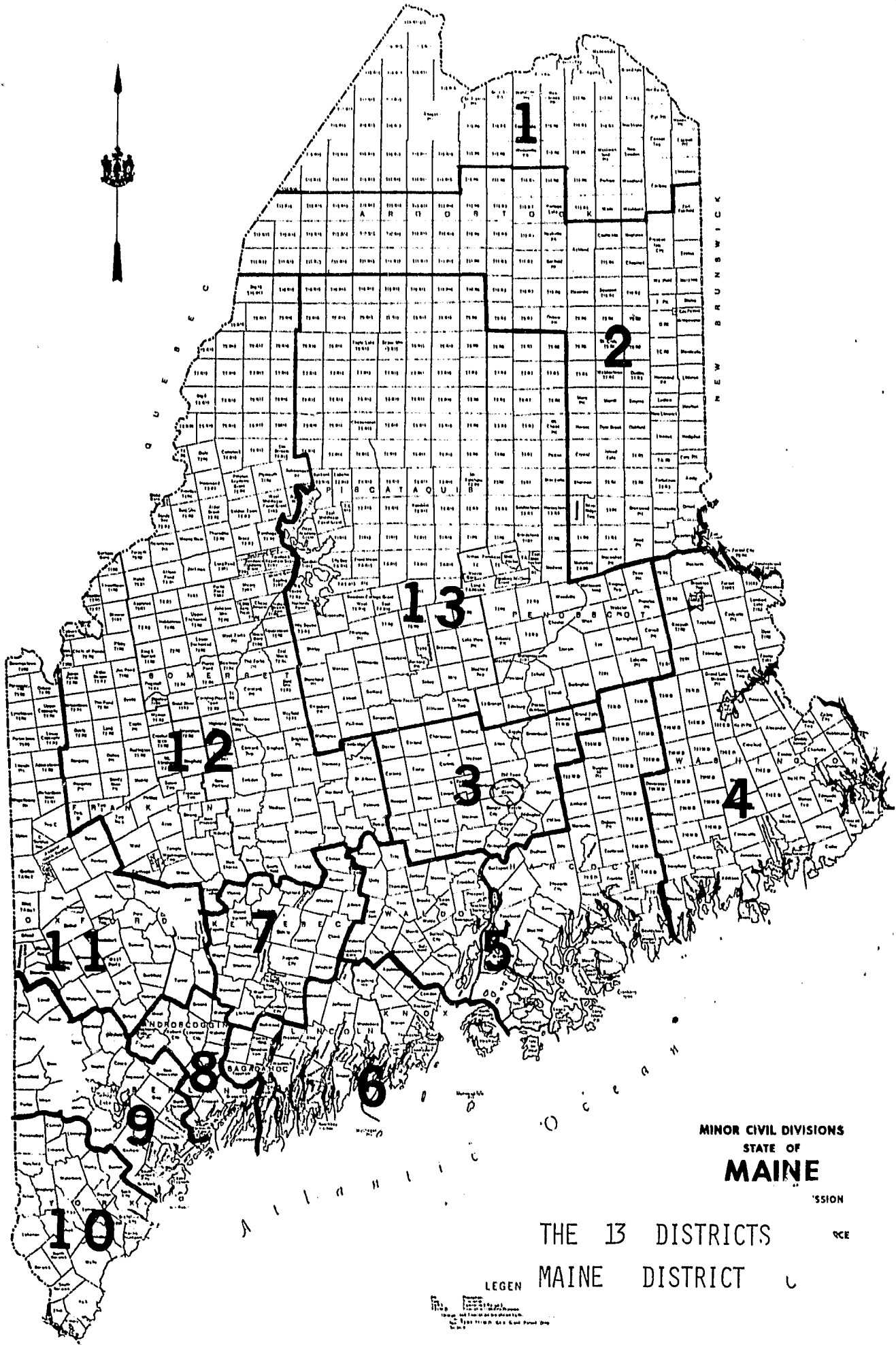
The District Court is funded by appropriations from the legislature. The costs of the District Court system during FY 1976 were \$2,301,932. This figure is broken down as follows:

Personal Services	\$1,372,487
Medical Services, etc.	250,651
All Other	<u>678,794</u>
Total	<u>\$2,301,932</u>



E
L
E
C
T
I
O
N
S

B
R
I
S
T
O
L
C
O
U
N
T
Y



MINOR CIVIL DIVISIONS
STATE OF
MAINE

'SSION

THE 13 DISTRICTS
MAINE DISTRICT

LEGEN

1
2
3
4
5
6
7
8
9
10
11
12
13

Administrative Office of the Courts

The mission of the Administrative Office of the Courts is to analyze current court procedures, suggest changes and implement those changes in order to increase productivity within the court system. This office is made up of a State Court Administrator and four Regional Court Administrators.

	Source of Funding	
	State	Federal
Administrative Office of the Courts		
State Court Administrator		1
Fiscal Director		1
Chief Clerk of Court	1	
Account Clerk	2	
Clerical		1
Regional Court Administrator		4
	<u>3</u>	<u>7</u>

The Administrative Office of the courts is presently funded by a \$187,000 grant from MCJPAA.

Maine Court System
Manpower Resources

Source of Funding
State

Maine Judicial Branch:

Maine Supreme Court

Justices 7

Law Clerks 7

Clerical 7

Office of Administrative Assistant

Administrative Assistant 1

Supreme Court Messenger 1

Clerical $\frac{2}{25}$

Total

Maine Court System
Manpower Resources

Source of Funding
State

Maine Judicial Branch:

Maine Superior Court	
Justices	14
Clerks of Court	16
Clerks Offices	90
Court Reporters	16
Research Assistants	<u>2</u>
Total	138

Maine Court System
Manpower Resources

Source of Funding
State

Maine Judicial Branch:

Maine District Court

Judges	20
Clerks	33
Clerks Offices	83
Transcribers	<u>2</u>
Total	<u>138</u>

MAINE SUPREME JUDICIAL COURT
CASES ENTERED 1964 - 1975

	64	65	66	67	68	69	70	71	72	73	74	75	TOT
Cases Entered	65	89	78	95	110	112	153	145	150	186	223	268	1674
Cases Finished	57	75	80	81	99	102	125	112	122	125	133	149	1260

1975 BREAKDOWN

Number of Cases Entered

Criminal Cases	137	51.1%
Civil Cases	<u>131</u>	48.9%
	268	

Cases Finished

Criminal Opinions	67	45.0%
Civil Opinions	69	46.3%
Unpublished Opinions	4	2.6%
Opinions of Justices	<u>9</u>	6.1%
	149	

STATE OF MAINE
SUPERIOR COURT
MISDEMEANOR TRANSFER CASES DISPOSED OF IN 1975

COUNTY	JURY TRIALS	JURY WAIVED TRIALS	FINISHED NO TRIAL
Androscoggin	12	77	122
Aroostook	16	15	318
Cumberland	7	29	1090
Franklin	10	16	136
Hancock	19	31	345
Kennebec	19	31	136
Knox	9	41	123
Lincoln	5	40	196
Oxford	4	54	124
Penobscot	10	17	439
Piscataquis	0	9	37
Sagadahoc	3	39	221
Somerset	18	11	185
Waldo	13	13	187
Washington	13	12	221
York	16	18	353
TOTAL	174	453	4233

TRANSFER CASES DISPOSED OF IN SUPERIOR COURT DURING 1975

	<u>JURY TRIALS</u>	<u>CONVICTIONS</u>	<u>ACQUITTALS</u>	<u>JURY WAIVED TRIALS</u>	<u>CONVICTIONS</u>	<u>ACQUITTALS</u>	<u>NO TRIALS</u>	<u>GUILTY PLEA</u>	<u>DISMISSED OR FILED</u>
JAN.	4	0	4	34	28	6	428	157	271
FEB.	25	17	8	63	45	18	589	230	359
MAR.	14	10	4	40	31	9	428	220	208
APR.	30	16	14	105	77	28	661	297	364
MAY	26	16	10	77	64	13	460	174	286
JUNE	25	18	7	86	66	20	412	160	252
JULY	12	6	6	19	18	1	179	76	103
AUG.	15	5	10	62	53	9	240	78	162
SEPT.	18	14	4	53	46	7	594	312	282
OCT.	20	16	4	95	83	12	512	210	302
NOV.	12	8	4	115	106	9	443	195	248
DEC.	6	4	2	57	55	2	242	122	120
TOTALS	207	130	77	806	672	134	5188	2231	2957

TOTAL TRANSFER CASES DISPOSED OF 6201

DISTRICT COURT CASELOAD

	Traffic	Other	Juvenile	Total Criminal	Total Civil	Total
FY 1971	62,584	26,652	2,240	91,476	30,708	122,184
FY 1972	77,993	27,416	2,203	107,712	31,275	138,887
FY 1973	94,497	33,821	3,381	131,699	30,568	162,267
FY 1974	97,651	30,774	3,943	132,368	30,916	163,284
FY 1975	95,709	29,440	3,572	128,721	36,496	165,217

DISTRICT COURT CASELOAD
For the Year Ending June 30, 1975

Dist/Site	Juvenile Court		Traffic Cases		Other Criminal		Total		
	#	%-G. Tot.	#	%-G. Tot.	#	%-G. Tot.	#	%-G. Tot.	
I	Caribou	42	1.2	2,043	2.1	631	2.1	2,716	2.1
	Ft. Kent	25	0.7	1,012	1.1	591	2.0	1,628	1.3
	Madawaska	33	0.9	566	0.6	262	0.9	861	0.7
	Van Buren	1		262	0.4	153	0.5	516	0.4
	Sub-Total	101	2.8	3,983	4.2	1,637	5.6	5,721	4.4
II	Houlton	98	2.8	3,679	3.8	649	2.2	4,426	3.4
	Presque Isle	198	5.5	2,206	2.3	1,104	3.8	3,508	2.7
	Sub-Total	296	8.3	5,885	6.2	1,753	6.0	7,934	6.2
III	Bangor	390	10.9	7,631	8.0	1,623	5.5	9,644	7.4
	Newport	90	2.5	3,443	3.6	566	1.9	4,099	3.2
	Sub-Total	480	13.4	11,074	11.6	2,189	7.4	13,743	10.7
IV	Calais	122	3.4	1,234	1.3	899	3.1	2,255	1.8
	Machias	36	1.0	1,210	1.3	562	1.9	1,808	1.4
	Sub-Total	158	4.4	2,444	2.6	1,461	5.0	4,063	3.2
V	Bar Harbor	17	0.5	454	0.5	319	1.1	790	0.6
	Belfast	87	2.4	1,371	1.4	737	2.5	2,195	1.7
	Ellsworth	115	3.2	2,315	2.4	897	3.0	3,327	2.6
	Sub-Total	219	6.1	4,140	4.3	1,953	6.6	6,312	4.9
VI	Bath	50	1.4	2,271	2.4	453	1.5	2,774	2.2
	Rockland	123	3.4	1,483	1.5	823	2.8	2,429	1.9
	Wiscasset	43	1.2	1,332	1.4	511	1.7	1,886	1.5
	Sub-Total	216	6.0	5,086	5.3	1,787	6.1	7,089	5.5
VII	Augusta	197	5.5	5,177	5.4	2,101	7.1	7,475	5.8
	Waterville	99	2.8	3,803	4.0	1,581	5.4	5,483	4.3
	Sub-Total	296	8.3	8,980	9.4	3,682	12.5	12,958	10.1

DISTRICT COURT CASELOAD (CONT.)
For the Year Ending June 30, 1975

Dist/Site	Juvenile Court		Traffic Cases		Other Criminal		Total	
	#	%-G. Tot.	#	%-G. Tot.	#	%-G. Tot.	#	%-G. Tot.
VIII Brunswick	89	2.5	3,369	3.5	747	2.5	4,205	3.3
Lewiston	<u>214</u>	<u>6.0</u>	<u>4,688</u>	<u>5.0</u>	<u>2,214</u>	<u>7.5</u>	<u>7,116</u>	<u>5.5</u>
Sub-Total	303	8.5	8,057	8.4	2,961	10.1	11,321	8.8
IX Bridgton	79	2.2	780	0.8	606	2.1	1,465	1.1
Portland	<u>429</u>	<u>12.0</u>	<u>18,503</u>	<u>19.3</u>	<u>2,401</u>	<u>8.2</u>	<u>21,333</u>	<u>16.5</u>
Sub-Total	508	14.2	19,283	20.1	3,007	10.2	22,798	17.7
X Kittery	61	1.7	4,794	5.0	821	2.8	5,676	4.4
Saco	166	4.7	6,868	7.2	1,566	5.3	8,600	6.7
Sanford	<u>90</u>	<u>2.5</u>	<u>2,118</u>	<u>2.2</u>	<u>859</u>	<u>2.9</u>	<u>3,067</u>	<u>2.4</u>
Sub-Total	317	8.9	13,780	14.4	3,246	11.0	17,343	13.5
XI Livermore Falls	17	0.5	734	0.8	203	0.7	954	0.7
Rumford	110	3.1	988	1.0	488	1.7	1,586	1.2
So. Paris	<u>28</u>	<u>0.8</u>	<u>844</u>	<u>0.9</u>	<u>394</u>	<u>1.3</u>	<u>1,266</u>	<u>1.0</u>
Sub-Total	155	4.3	2,566	2.7	1,085	3.7	3,806	3.0
XII Farmington	89	2.5	1,897	2.0	783	2.7	2,769	2.2
Skowhegan	<u>123</u>	<u>3.4</u>	<u>3,094</u>	<u>3.2</u>	<u>1,464</u>	<u>5.0</u>	<u>4,681</u>	<u>3.6</u>
Sub-Total	212	5.9	4,991	5.2	2,247	7.6	7,450	5.8
XIII Dover-Foxcroft	152	4.3	1,835	1.9	1,171	4.0	3,158	2.5
Lincoln	56	1.6	2,388	2.5	491	1.7	2,935	2.3
Millinocket	<u>103</u>	<u>2.9</u>	<u>1,217</u>	<u>1.2</u>	<u>770</u>	<u>2.6</u>	<u>2,090</u>	<u>1.6</u>
Sub-Total	311	8.7	5,440	5.7	2,432	8.3	8,183	6.4
GRAND TOTALS	3,572		95,709		29,440		128,721	

CRIMINAL CASES - SUPERIOR COURT IN 1975

	<u>Cases Entered</u>	<u>Cases Finished</u>	<u>Net Pending (Increase/Decrease)</u>
Cumberland	1,699 (19.2)	2,154 (12.0)	- 455 (32.8)
All Other Counties	7,169 (80.8)	8,103 (79.0)	- 934 (67.2)
State	8,868 (100.0)	10,257 (100.0)	-1,389 (100.0)

CRIMINAL CASES - SUPERIOR COURT IN 1974

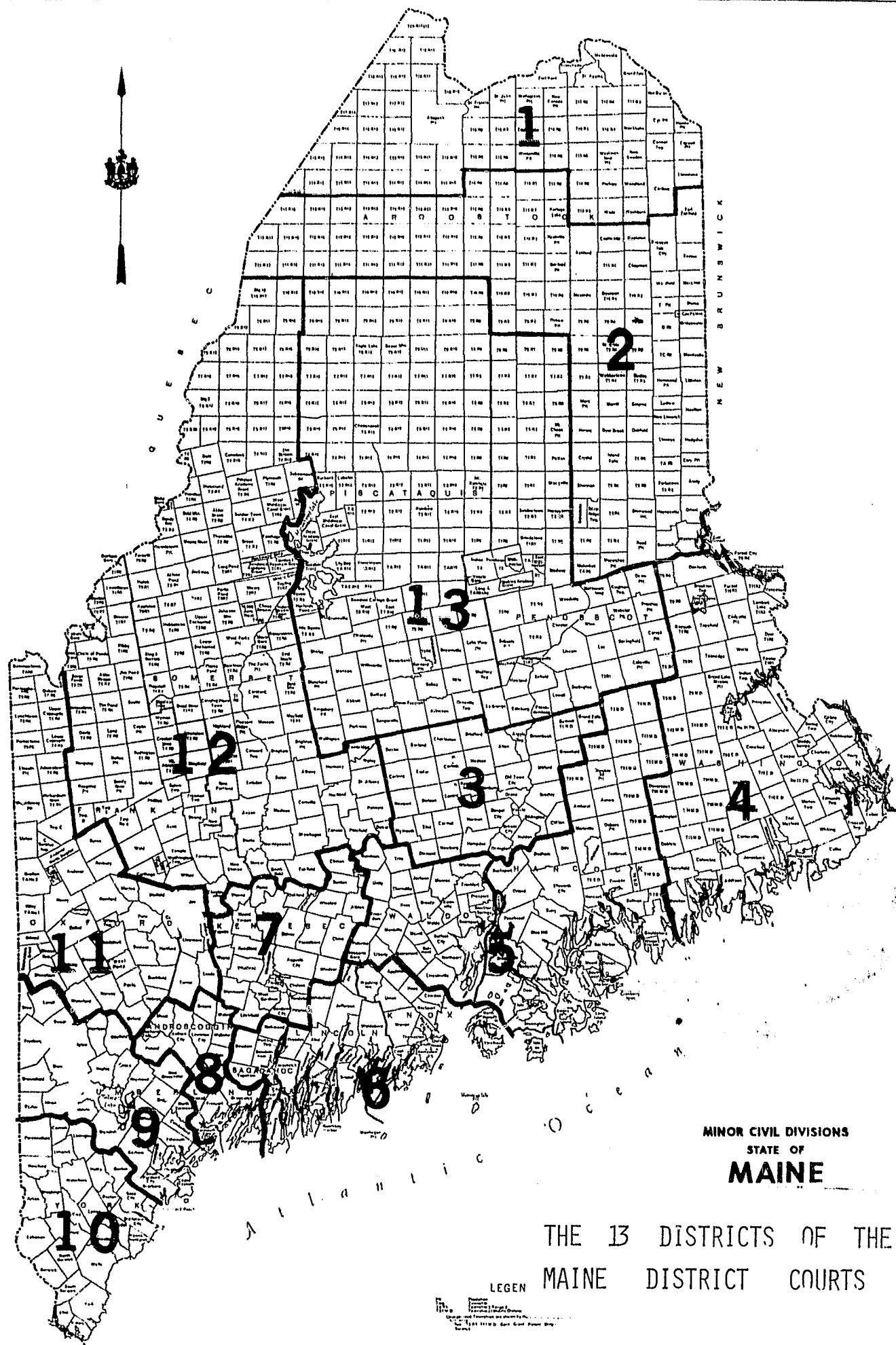
Cumberland	2,073 (21.2)	1,829 (22.0)	+ 244 (16.5)
All Other Counties	7,712 (78.8)	6,476 (78.0)	+1,236 (83.5)
State	9,785 (100.0)	8,305 (100.0)	+1,480 (100.0)

The above information has been derived from the "Summary of Clerks Report to the Chief Justice" (of the Supreme Court of Maine) for the years ending December 31, 1974 and 1975. Under a part-time County Prosecutor system, Maine's Superior Court criminal caseload increased by 1,480 cases in 1974. Then, in 1975, the total criminal caseload pending on December 31 was reduced by 1,389 cases under the newly created full-time District Attorney system. Cumberland County, with a population representing an estimated 19.2% of the state total, accounted for only 16.5% of the increase in the backlog in 1974 and accounted for fully 32.8% of the 1975 reduction in the case backlog.

SUPERIOR COURT OF MAINE
 YEAR ENDING DECEMBER 31, 1975
 CRIMINAL DOCKET

<u>JURISDICTION</u>	<u>CASES ENTERED DURING THE YEAR</u>	<u>CASES FINISHED DURING THE YEAR</u>	<u>NET IMPACT ON PENDING CASES</u>
Androscoggin	573 (6.5%)	577 (5.6%)	- 4 (0.3%)
Aroostook	813 (9.2%)	842 (8.2%)	- 29 (2.1%)
Cumberland	1,699 (19.2%)	2,154 (21.0%)	- 455 (32.8%)
Franklin	228 (2.6%)	261 (2.5%)	- 33 (2.4%)
Hancock	595 (6.7%)	672 (6.6%)	- 77 (5.5%)
Kennebec	801 (9.0%)	1,015 (9.9%)	- 214 (15.4%)
Knox	311 (3.5%)	294 (2.9%)	+ 17 (-1.2%)
Lincoln	254 (2.9%)	215 (2.1%)	+ 39 (-2.8%)
Oxford	289 (3.3%)	393 (3.8%)	- 104 (7.5%)
Penobscot	1,040 (11.7%)	1,250 (12.2%)	- 210 (15.1%)
Piscataquis	131 (1.5%)	147 (1.4%)	- 16 (1.2%)
Sagadahoc	210 (2.4%)	265 (2.6%)	- 55 (4.0%)
Somerset	597 (6.7%)	566 (5.5%)	+ 31 (-2.2%)
Waldo	196 (2.2%)	222 (2.2%)	- 26 (1.9%)
Washington	233 (2.6%)	281 (2.7%)	- 48 (3.5%)
York	<u>898 (10.1%)</u>	<u>1,103 (10.8%)</u>	<u>- 205 (14.8%)</u>
TOTAL	8,868	10,257	-1,389

Prepared by the
 MCJDC, April 1976



MINOR CIVIL DIVISIONS
STATE OF
MAINE

THE 13 DISTRICTS OF THE
MAINE DISTRICT COURTS

LEGEN

Scale: 1 inch = 50 miles
Source: U.S. Census Bureau, 1930
Copyright: 1931 by the State of Maine

END