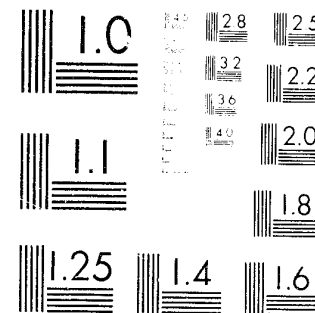


National Criminal Justice Reference Service

**ncjrs**

This microfiche was produced from documents received for inclusion in the NCJRS data base. Since NCJRS cannot exercise control over the physical condition of the documents submitted, the individual frame quality will vary. The resolution chart on this frame may be used to evaluate the document quality.



MICROSCOPY RESOLUTION TEST CHART  
NATIONAL BUREAU OF STANDARDS-1963-A

Microfilming procedures used to create this fiche comply with the standards set forth in 41CFR 101-11.504.

Points of view or opinions stated in this document are those of the author(s) and do not represent the official position or policies of the U. S. Department of Justice.

National Institute of Justice  
United States Department of Justice  
Washington, D. C. 20531

DATE FILMED

June 15, 1981

58411



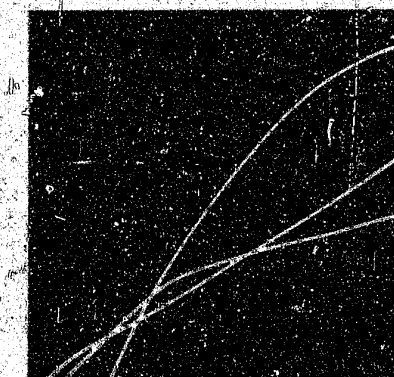
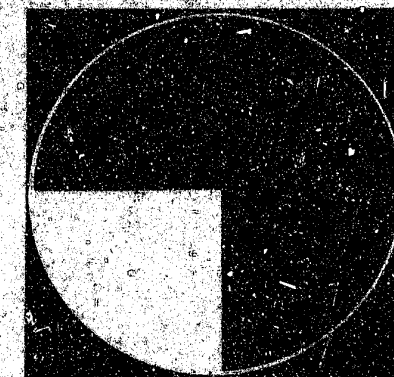
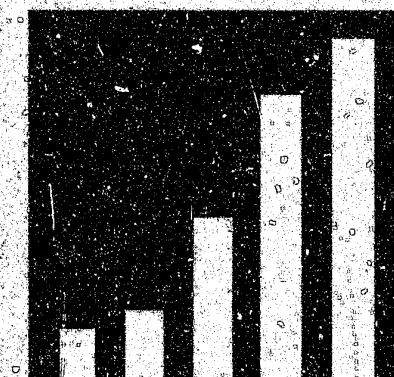
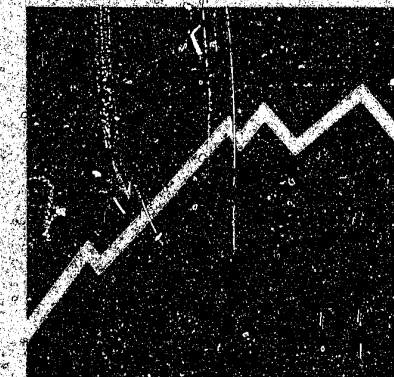
# Drug Enforcement Statistical Report

Enforcement Activity  
Drug Abuse Indicators  
Organization & Training Data

United States Department of Justice  
Drug Enforcement Administration

Statistics Compiled  
Through December 1978

**MICROFICHE**



## DRUG ENFORCEMENT STATISTICAL REPORT PREFACE

This report, dealing with the statistics of drug law enforcement and the illicit drug problem, is prepared as a reporting vehicle. No attempt is made to project the future trends of any of the reported statistics. Each section of data is described, however, to insure that the reader is not confused by the various categories which are presented. Additionally, short narrative statistical capsules are also included. These are intended to clarify the figures and are not evaluations of either the drug problem or the programs involved.

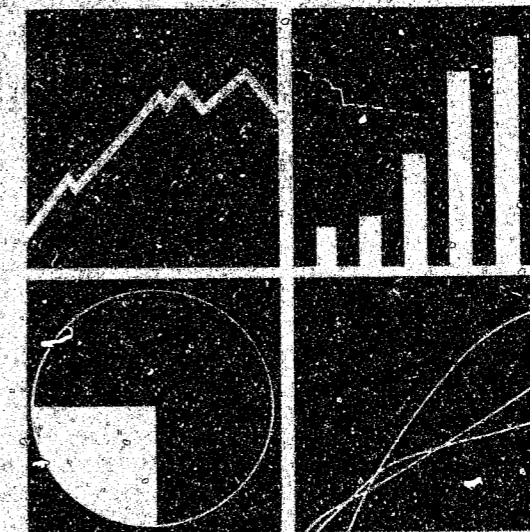
The report is divided into three sections consisting of Enforcement Activity, Drug Abuse Indicators and Organization and Training Data. Each section reflects its data base by both fiscal and calendar year, when available. There are some categories, however, such as Personnel-on-Board, where it was felt that a double presentation would be redundant. When this is the case, the data is presented only by either fiscal or calendar year.

All data presented reflects the most recent compilations available. Therefore, the final column of each chart may reflect cumulative statistics of a partial year. For instance, a column headed 2Q CY 78 would contain figures for the first six months of that year, not just the second quarter.

NCJRS

JUN 14 1979

ACQUISITIONS



ENFORCEMENT  
ACTIVITY

## ENFORCEMENT ACTIVITY TABLE OF CONTENTS

<u>Section</u>	<u>Page</u>
DEA Federal Domestic Drug Removals	2
DEA State and Local Task Force Removals	6
DEA/Foreign Cooperative Drug Removals	8
Ports and Borders Drug Removals	10
DEA Federal Arrests and Defendant Dispositions	14
DEA Initiated Task Force Arrests and Defendant Dispositions	16
DEA/Foreign Cooperative Arrests	18
Other Domestic Arrests and Clandestine Labs Seized	20
Compliance Investigations and Regulatory Actions	22
State and Local Drug Law Arrests	24
Laboratory Analyses Performed	26
Aliens Arrested Within the U.S. for a Drug Offense	28

# ENFORCEMENT ACTIVITY TOTAL DEA DOMESTIC DRUG REMOVALS

## DESCRIPTION OF DATA:

DEA domestic removal statistics represent a total of all drug deliveries and seizures made by DEA or cooperating law enforcement agencies as part of ongoing DEA Federal investigations. The source documents for these statistics are chemist analysis reports which are prepared on each drug exhibit received at DEA laboratories. The utilization of these reports insures correct identification of each exhibit as well as accurate tabulation of the amounts removed.

Removals of heroin, cocaine, marihuana, hashish and opium are reported in net weight (including any diluent present but not the weight of wrappings or packaging). Dangerous drug removals are usually shown in dosage units, however, when they involve powder and the chemist's analysis does not include potency of the exhibit, the net weight is reported with no conversion to dosage units attempted.

## ANALYSIS OF DATA:

Total narcotic removals during CY 78, with the exception of cocaine, decreased when compared to CY 1977 figures. Heroin's decline can be attributed to its decrease in availability. Meanwhile, cocaine removals more than doubled this year with significant seizures being made in the Southeast.

Despite substantial decreases in stimulants and depressants removed, the CY 1978 rate for dangerous drug removals is nearly equal that recorded for CY 1977. This effect is due to substantial increases in hallucinogen removals.

Cannabis removals increased substantially during CY 1978. This also is a result of significant seizures being recorded.

# ENFORCEMENT ACTIVITY TOTAL DEA DOMESTIC DRUG REMOVALS

	FY76	TQ FY76	FY77	FY78	1Q FY79
Opium (lbs.)	21	0	81	31	0
Heroin (lbs.)	693	149	610	430	111
Cocaine (lbs.)	430	153	434	663	440
Marihuana (lbs.)	325,848	13,202	406,883	1,038,191	122,615
Hashish (lbs.)	7,674	316	6,821	2,993	38
Hallucinogens (d.u.)	1,940,811	132,572	2,187,061	5,081,177	1,311,125
Depressants (d.u.)	817,068	165,703	770,364	414,153	61,831
Stimulants (d.u.)	5,739,955	953,437	5,935,988	3,187,828	560,195
Methadone (d.u.)	1,079	659	2,049	39	0

	CY74	CY75	CY76	CY77	CY78
Opium (lbs.)	14	20	11	79	27
Heroin (lbs.)	462	603	645	488	442
Cocaine (lbs.)	465	447	512	399	1,009
Marihuana (lbs.)	113,484	234,116	290,909	335,452	1,117,422
Hashish (lbs.)	812	3,771	5,040	6,651	3,004
Hallucinogens (d.u.)	3,263,671	1,351,405	1,824,276	3,848,117	4,349,917
Depressants (d.u.)	793,131	385,404	907,029	867,960	311,044
Stimulants (d.u.)	16,009,317	6,242,105	4,975,021	5,917,767	2,901,948
Methadone (d.u.)	3,432	737	3,531	23	39

**ENFORCEMENT ACTIVITY  
DEA DOMESTIC DRUGS REMOVED THROUGH SEIZURES**

	FY76	TQ FY76	FY77	FY78	IQ FY79
Opium (lbs.)	20	0	75	31	0
Heroin (lbs.)	615	124	528	374	102
Cocaine (lbs.)	385	147	401	624	432
Marihuana (lbs.)	325,824	13,202	406,440	1,038,154	119,929
Hashish (lbs.)	7,667	315	6,820	2,993	37
Hallucinogens (d.u.)	1,702,299	117,310	1,947,687	4,654,896	1,003,566
Depressants (d.u.)	707,782	155,643	627,832	396,675	55,280
Stimulants (d.u.)	5,147,354	919,253	5,055,961	2,553,665	482,076
Methadone (d.u.)	621	0	2,027	42	0

	CY74	CY75	CY76	CY77	CY78
Opium (lbs.)	14	19	9	74	27
Heroin (lbs.)	408	533	549	410	396
Cocaine (lbs.)	397	362	482	363	973
Marihuana (lbs.)	113,210	234,094	290,456	335,440	1,114,699
Hashish (lbs.)	802	3,755	5,039	6,650	3,003
Hallucinogens (d.u.)	2,436,797	945,445	1,598,594	3,638,269	3,657,838
Depressants (d.u.)	565,336	324,119	805,941	736,100	289,436
Stimulants (d.u.)	13,785,141	5,214,756	4,449,195	4,825,958	2,509,023
Methadone (d.u.)	1,803	737	2,414	1	42

**ENFORCEMENT ACTIVITY  
DEA DOMESTIC DRUGS REMOVED THROUGH DELIVERY**

	FY76	TQ FY76	FY77	FY78	IQ FY79
Opium (lbs.)	1	0	5	0	0
Heroin (lbs.)	78	25	82	56	9
Cocaine (lbs.)	45	6	33	39	8
Marihuana (lbs.)	24	0	443	37	2,686
Hashish (lbs.)	7	1	1	0	1
Hallucinogens (d.u.)	238,512	15,262	239,374	426,281	307,559
Depressants (d.u.)	109,286	10,060	142,532	17,478	6,551
Stimulants (d.u.)	592,601	34,184	880,027	634,163	78,199
Methadone (d.u.)	458	659	22	3	0

	CY74	CY75	CY76	CY77	CY78
Opium (lbs.)	0	1	2	5	0
Heroin (lbs.)	54	70	96	78	46
Cocaine (lbs.)	68	85	30	36	36
Marihuana (lbs.)	274	22	453	12	2,723
Hashish (lbs.)	10	16	1	1	1
Hallucinogens (d.u.)	826,874	405,960	225,682	209,848	692,079
Depressants (d.u.)	227,795	61,285	101,088	131,860	21,608
Stimulants (d.u.)	2,224,176	1,027,349	525,826	1,091,809	392,925
Methadone (d.u.)	1,629	0	1,117	22	3

# ENFORCEMENT ACTIVITY DEA STATE AND LOCAL TASK FORCE DRUG REMOVALS

## DESCRIPTION OF DATA:

DEA, in coordination with State and Local law enforcement agencies, participates in a Task Force program designed to affect the mid-level to street-level activities of drug dealers. Toward this end, combined DEA/State/Local teams of agents conduct independent investigations which lead to the removal, through deliveries and seizures, of illicit drugs. Statistics reported as Task Force Removals are only those removals which are sent to DEA labs for analysis. Exhibits which are turned over to State or Local labs for analysis are not reported.

Removal quantities are the same weights or dosage units as reported on DEA removal charts, which were described previously.

## ANALYSIS OF DATA:

DEA Task Force narcotic removals for CY 78 are well above those for CY 1977. The increase in CY 78 has been made despite DEA's de-emphasis of the Task Force Program begun in 1976. Likewise, CY 78 dangerous drug removals, with the exception of stimulants have been well above previous rates.

# ENFORCEMENT ACTIVITY DEA STATE AND LOCAL TASK FORCE DRUG REMOVALS

	FY76	TQ FY76	FY77	FY78	1Q FY79
Opium (lbs.)	2	5	2	2	0
Heroin (lbs.)	111	59	97	83	45
Cocaine (lbs.)	82	10	58	80	25
Marihuana (lbs.)	36,271	2,626	16,394	12,315	106,787
Hashish (lbs.)	15	1	153	246	1
Hallucinogens (d.u.)	738,853	18,255	228,798	895,071	137,265
Depressants (d.u.)	200,359	6,356	19,803	136,777	11,479
Stimulants (d.u.)	749,604	21,706	1,079,890	361,680	392,897
Methadone (d.u.)	25	1	59	771	0

	CY74	CY75	CY76	CY77	CY78
Opium (lbs.)	0.5	0.5	8	2	2
Heroin (lbs.)	79	125	118	93	117
Cocaine (lbs.)	94	161	59	61	92
Marihuana (lbs.)	8,531	19,762	35,209	13,384	118,209
Hashish (lbs.)	23	29	57	108	247
Hallucinogens (d.u.)	616,317	1,126,201	83,762	244,419	964,880
Depressants (d.u.)	87,880	271,491	63,459	53,866	103,845
Stimulants (d.u.)	4,015,306	1,863,989	526,726	1,131,211	628,960
Methadone (d.u.)	1,274	4,377	34	114	716

# ENFORCEMENT ACTIVITY DEA/FOREIGN COOPERATIVE DRUG REMOVALS

## DESCRIPTION OF DATA:

DEA/Foreign Cooperative Drug Removals reflect the volume of drugs seized by foreign narcotics enforcement officials with the assistance of DEA. Unlike domestic drug removal statistics, which are verified by laboratory analysis, foreign removals represent the gross weight of each suspected drug.

## ANALYSIS OF DATA:

There were record foreign cooperative removals of morphine base, marihuana, hashish and depressants in bulk form during CY 1978. Most of the depressants were from a single case in Mexico in July 1978.

Removals of specific drugs were concentrated in certain geographic areas. Most opium and hashish seizures were in the Middle East, cocaine and marihuana seizures in Latin America, and heroin seizures in the Far East and Mexico.

# ENFORCEMENT ACTIVITY DEA/FOREIGN COOPERATIVE DRUG REMOVALS

Opium (lbs.)  
Morphine Base (lbs.)  
Heroin (lbs.)  
Cocaine (lbs.)  
Marihuana (lbs.)  
Hashish (lbs.)  
Hashish Oil (qts.)  
Hashish Oil (lbs.)  
Hallucinogens (d.u.)  
Hallucinogens (gross lbs.)  
Depressants (d.u.)  
Depressants (gross lbs.)  
Stimulants (d.u.)  
Stimulants (gross lbs.)

FY76	TQ FY76	FY77	FY78	1Q FY79
24,981	7,110	31,514	15,342	620
934	12	151	588	150
1,451	138	1,564	1,493	660
3,315	205	3,857	6,198	2,641
454,773	1,582	261,818	1,304,024	103,385
29,734	396	24,714	73,781	20,187
11	0	5	19	0
246	12	558	4	0
3,300	0	7	2	0
0	0	0	0	0
15,105,721	0	989,256	2,120,841	134
1,323	2	0	3,993	0
4,245,641	0	30	301,005	0
9	1	50	2	0

Opium (lbs.)  
Morphine Base (lbs.)  
Heroin (lbs.)  
Cocaine (lbs.)  
Marihuana (lbs.)  
Hashish (lbs.)  
Hashish Oil (qts.)  
Hashish Oil (lbs.)  
Hallucinogens (d.u.)  
Hallucinogens (gross lbs.)  
Depressants (d.u.)  
Depressants (gross lbs.)  
Stimulants (d.u.)  
Stimulants (gross lbs.)

CY74	CY75	CY76	CY77	CY78
16,378	19,566	19,423	37,873	9,602
527	451	565	226	656
541	1,474	653	1,948	1,706
991	2,202	2,507	6,245	5,958
1,118,578	569,631	310,952	334,482	1,298,960
43,919	33,026	14,263	29,321	88,982
404	13	11	12	12
356	282	191	550	0
176,375	5,440	0	9	0
0	0	0	0	0
1,274,983	37,141	15,098,985	3,029,790	80,432
2	0	1,325	0	3,993
3,603,726	3,487,431	869,553	277,684	23,351
97	8	4	49	2

# ENFORCEMENT ACTIVITY PORTS AND BORDERS DRUG REMOVALS

## DESCRIPTION OF DATA:

Federal drug removals along the U.S. border and at ports of entry are reported to DEA by the Immigration and Naturalization Service and the U.S. Customs Service. The data is tabulated from seizures made by their personnel and analyzed by field tests performed at the time of the seizure. Dangerous drug seizures are not broken out into categories (e.g., stimulants, depressants, hallucinogens) but, rather, are considered as one category labeled "dangerous drugs" and reported in terms of five grain units.

## ANALYSIS OF DATA:

The aggregate removal rate of narcotics increased during CY 1978 despite a substantial decrease in heroin removed. This was due to an increase in cocaine removed coupled with an increase in opium removed.

After a significant decrease in CY 77 dangerous drug removals have once again reached levels comparable to those recorded in CY 1976.

Marihuana removals are at unprecedented high levels. The majority of the marihuana was removed by U.S. Customs with a large proportion of the removals being recorded during the first nine months of the calendar year.

# ENFORCEMENT ACTIVITY CUSTOM SERVICE ILLICIT DRUG REMOVALS

	FY76	1B FY76	FY77	FY78	1B FY79
Opium (lbs.)	38	4	20	20	24
Heroin (lbs.)	264	45	278	189	35
Cocaine (lbs.)	1,030	236	951	1,422	376
Marihuana (lbs.)	759,560	115,334	1,547,055	4,616,895	1,024,261
Hashish (lbs.)	13,307	470	15,922	22,659	2,748
Dangerous Drugs (d.u.)	21,418,652	2,114,245	7,811,733	7,687,348	11,341,359

	CY76	CY77	CY78
Opium (lbs.)	38	17	43
Heroin (lbs.)	253	240	192
Cocaine (lbs.)	1,068	1,142	1,339
Marihuana (lbs.)	822,340	1,633,774	4,961,480
Hashish (lbs.)	7,354	18,220	22,796
Dangerous Drugs (d.u.)	19,404,803	8,009,453	18,035,065

**ENFORCEMENT ACTIVITY  
IMMIGRATION AND NATURALIZATION SERVICE ILLICIT DRUG REMOVALS**

	FY76	1Q FY76	FY77	FY78	1Q FY79
Opium (lbs.)	0	0	1	0	0
Heroin (lbs.)	151	10	73	1	16
Cocaine (lbs.)	39	1	26	41	9
Marihuana (lbs.)	186,525	64,993	180,959	177,488	84,429
Hashish (lbs.)	83	6	159	25	15
Dangerous Drug (d.u.)	920,642	6,135	146,370	57,679	5,512

	CY75	CY76	CY77	CY78
Opium (lbs.)	1	0	0	0
Heroin (lbs.)	107	66	1	17
Cocaine (lbs.)	37	22	36	45
Marihuana (lbs.)	224,894	154,417	156,606	241,035
Hashish (lbs.)	56	157	25	40
Dangerous Drugs (d.u.)	91,492	147,050	54,017	59,525

**ENFORCEMENT ACTIVITY  
COAST GUARD\***

	CY76	CY77	CY78
Opium (lbs.)	0	0	0
Heroin (lbs.)	0	0	0
Cocaine (lbs.)	44	0	0
Marihuana (lbs.)	200,568	1,022,799	3,276,292
Hashish (lbs.)	0	0	1,100
Dangerous Drugs (d.u.)	0	0	500,000

\*Drugs removed by the United States Coast Guard are, in most cases, turned over to other agencies for disposal after seizure. For this reason, the statistics reported above may also be included in the removal figures of other federal agencies. To avoid duplicate counting, the above figures should not be included in total domestic removal statistics.

# ENFORCEMENT ACTIVITY DEA FEDERAL ARRESTS AND DEFENDANT DISPOSITIONS

## DESCRIPTION OF DATA:

DEA Federal domestic arrests represent all those individuals detained by DEA within the United States. Arrest forms are submitted to Headquarters for compilation and as file records. These forms contain the drug involved in the violation as well as the charge made at the time of arrest.

DEA reviews all defendant dispositions to determine the final judicial status of each individual arrested. This provides information both for the timing of case termination as well as allowing for the examination of the quality of the cases. Included are both Federal and State court dispositions.

## ANALYSIS OF DATA:

The DEA Federal arrest rate for CY 1978 has decreased by 21% when compared to CY 1977 figures. This decrease was first noted during CY 1976 and reflects the re-focusing of DEA's enforcement effort toward major upper-level violators which began during that period and continues in effect today.

# ENFORCEMENT ACTIVITY DEA FEDERAL ARRESTS AND DEFENDANT DISPOSITIONS

	FY76	TQ FY76	FY77	FY78	IQ FY79
Arrest Total	7,265	1,365	6,230	5,594	1,239
Heroin	2,971	729	2,981	2,079	344
Cocaine	1,799	297	1,216	1,416	402
Other Narcotics	29	1	24	27	-
Cannabis	1,239	135	1,079	1,180	252
Hallucinogens	423	78	326	379	58
Depressants	146	25	148	126	40
Stimulants	615	95	435	348	128
Other	43	5	21	39	15
Convictions					
Federal	5,121	1,009	4,043	5,559	605
State	936	170	930	1,509	183
Acquittals					
Federal	239	30	193	205	31
State	32	10	38	38	3
Dismissals					
Federal	787	121	618	751	5
State	177	26	155	212	5

	CY74	CY75	CY76	CY77	CY78
Arrest Total	6,782	7,404	6,200	6,527	5,174
Heroin	1,963	2,800	2,942	2,981	1,650
Cocaine	1,814	2,082	1,335	1,337	1,466
Other Narcotics	17	33	15	28	20
Cannabis	1,588	1,292	906	1,128	1,189
Hallucinogens	478	420	332	404	320
Depressants	116	123	130	178	117
Stimulants	769	615	515	431	381
Other	37	39	25	40	31
Convictions					
Federal	2,583	3,107	5,467	4,542	4,662
State	220	404	1,086	984	1,414
Acquittals					
Federal	108	154	225	211	185
State	9	13	50	35	30
Dismissals					
Federal	409	524	724	713	596
State	41	62	198	166	179

# **ENFORCEMENT ACTIVITY DEA INITIATED TASK FORCE ARRESTS AND DEFENDANT DISPOSITIONS**

## DESCRIPTION OF DATA:

Records of Task Force arrests are maintained in the same manner as DEA arrests. The arrest statistics reported for Task Forces include all individuals arrested by ODALE (Office of Drug Abuse Law Enforcement) in FY 1973, and by the Federal Task Force program since FY 1974.

Monitoring of Task Force defendant dispositions is carried on similarly to DEA defendant dispositions. Both Federal and State court dispositions are included.

## ANALYSIS OF DATA:

The decrease of Task Force arrests first noted in CY 1976 have continued, though to a lesser degree, during CY 1977 and CY 1978. Specifically, DEA/ Task Force arrests have decreased by more than 50% since CY 1975. This decrease, however, is in keeping with DEA's de-emphasis of the Task Force program and had been anticipated.

# **ENFORCEMENT ACTIVITY DEA INITIATED TASK FORCE ARRESTS AND DEFENDANT DISPOSITIONS**

	FY76	TQ FY76	FY77	FY78	1Q FY79
Arrest Total	3,265	633	2,875	2,373	525
Heroin	1,342	278	1,219	805	197
Cocaine	790	146	364	622	159
Other Narcotics	18	0	33	12	-
Cannabis	576	116	558	434	44
Hallucinogens	146	18	148	202	70
Depressants	79	14	47	51	10
Stimulants	293	57	291	224	43
Others	21	4	15	23	2
Convictions					
Federal	1,072	229	759	713	149
State	1,447	330	1,339	1,186	195
Acquittals					
Federal	52	1	23	29	7
State	45	9	46	46	6
Dismissals					
Federal	118	48	92	35	2
State	318	78	233	86	7

	CY74	CY75	CY76	CY77	CY78
Arrests Total	4,936	4,788	2,923	2,842	2,259
Heroin	1,887	1,851	1,230	1,142	766
Cocaine	990	1,094	670	567	634
Other Narcotics	13	23	20	25	10
Cannabis	1,160	948	506	580	361
Hallucinogens	268	308	109	165	228
Depressants	74	112	57	49	52
Stimulants	524	414	317	301	184
Others	20	38	14	13	24
Convictions					
Federal	786	1,170	927	819	646
State	789	1,712	1,402	1,221	1,018
Acquittals					
Federal	38	61	31	20	34
State	27	54	52	30	37
Dismissals					
Federal	121	159	133	86	27
State	219	404	313	218	39

# ENFORCEMENT ACTIVITY DEA/FOREIGN COOPERATIVE ARRESTS

## DESCRIPTION OF DATA:

DEA/Foreign Cooperative Arrests show the number of individuals arrested by foreign narcotic enforcement officers with the direct or indirect assistance of DEA. These arrests are reported and recorded by primary drug of violation.

## ANALYSIS OF DATA:

DEA foreign cooperative arrests in CY 1978 exceeded those in CY 1977 by five percent. During the same interval, heroin arrests increased by twenty-one percent while marihuana arrests decreased by twenty-seven percent.

Due to extensive DEA cooperative law enforcement activity in Latin America, cocaine cooperative arrests account for almost half of the foreign arrests.

# ENFORCEMENT ACTIVITY DEA/FOREIGN COOPERATIVE ARRESTS

	FY76	1Q FY76	FY77	FY78	1Q FY79
Opium	102	13	36	56	16
Morphine Base	42	4	26	19	6
Heroin	346	72	212	305	71
Cocaine	608	142	522	586	126
Marihuana	265	9	160	122	14
Hashish	90	7	71	88	22
Hallucinogens	0	0	2	2	0
Stimulants	34	20	45	18	0
Depressants	7	2	0	2	0
Total	1,494	269	1,074	1,198	255

	CY74	CY75	CY76	CY77	CY78
Opium	106	87	100	28	65
Morphine Base	46	46	27	17	25
Heroin	288	267	306	251	303
Cocaine	502	445	573	566	569
Marihuana	520*	338*	221	142	104
Hashish	-	-	76	70	87
Hallucinogens	-	-	0	2	2
Stimulants	-	-	43	43	16
Depressants	-	-	7	0	2
Total	1,462	1,183	1,353	1,119	1,173

\* Combined figure including all other drugs.

# **ENFORCEMENT ACTIVITY OTHER DOMESTIC ARRESTS AND CLANDESTINE LABS SEIZED**

## DESCRIPTION OF DATA:

DEA/State and Local Cooperative Arrests represent those violators detained as a result of a state or local investigation of drug law violation in which DEA assistance was requested.

Customs and INS Referral Arrests reflect those individuals arrested by these agencies and subsequently turned over to DEA for processing and prosecution.

The number of clandestine laboratories seized represents those illicit manufacturing plants discovered and seized by DEA in the course of its domestic investigations.

## ANALYSIS OF DATA:

DEA/State and Local Cooperative Arrests have remained relatively constant during CY 78 while Custom and INS referral arrests decreased by 43% and 64% respectively during this time period.

There were more clandestine laboratories seized in CY 1978 than during any previous year. PCP and methamphetamine labs were the predominant class of illicit labs seized in CY 1978.

# **ENFORCEMENT ACTIVITY OTHER DOMESTIC ARRESTS AND CLANDESTINE LABS SEIZED**

	FY76	TQ FY76	FY77	FY78	1Q FY79
DEA/State and Local Cooperative Arrests	1,521	273	1,566	1,661	397
Customs Referral Arrests	1,925	448	1,713	1,045	178
INS Referral Arrests	734	188	766	411	20
Clandestine Labs Seized	71	18	114	142	32

	CY74	CY75	CY76	CY77	CY78
DEA/State and Local Cooperative Arrests	1,510	1,732	1,258	1,750	1,615
Customs Referral Arrests	-	2,092	1,822	1,614	916
INS Referral Arrests	-	942	775	769	264
Clandestine Labs Seized	60	57	77	127	143

## ENFORCEMENT ACTIVITY COMPLIANCE INVESTIGATIONS AND REGULATORY ACTIONS

### DESCRIPTION OF DATA:

DEA has the responsibility, under the Controlled Substances Act, to reduce the quantity of legally manufactured drugs diverted to illicit purposes. To accomplish this, a regulatory program has been established by which the DEA licenses and inspects legitimate handlers of controlled drugs. Inspections are performed on a scheduled or complaint basis and actions are administered according to the violation.

### ANALYSIS OF DATA:

New compliance activity was suspended for six weeks during CY 1978 pending completion of new work plans required by the reorganization of DEA's domestic regions. This accounts for the 16% decline in compliance investigations between CY 1977 and CY 1978.

Administrative actions in CY 1978 decreased from the previous year by a much smaller margin than investigations, down 9%, and occurred mostly among the manufacturers and distributors which are DEA's primary regulatory responsibility.

## ENFORCEMENT ACTIVITY COMPLIANCE INVESTIGATIONS AND REGULATORY ACTIONS

	FY76	TQ FY76	FY77	FY78	1Q FY79
Regulatory Investigations	1,171	271	1,046	929	200
Complaint Investigations	484	135	394	314	48
Actions					
Administrative Actions	1,041	294	1,076	978	203
Manufacturer	103	24	94	119	18
Distributor	286	69	299	306	81
Pharmacy	246	89	291	213	43
Practitioner	161	42	203	153	27
Other	245	70	189	187	34
Arrests	29	2	44	29	0
Manufacturer	0	0	0	3	0
Distributor	2	0	1	4	0
Pharmacy	11	1	21	11	0
Practitioner	15	0	17	11	0
Other	1	1	5	0	0
Seizures	7	3	4	4	0
Manufacturer	5	0	0	1	0
Distributor	1	0	2	1	0
Pharmacy	1	0	1	0	0
Practitioner	0	0	1	2	0
Other	0	3	0	0	0

	CY74	CY75	CY76	CY77	CY78
Regulatory Investigations	1,164	1,570	1,124	1,059	886
Complaint Investigations	425	588	519	333	286
Actions					
Administrative Actions	796	1,296	1,112	1,027	937
Manufacturer	90	126	97	102	102
Distributor	288	355	261	322	311
Pharmacy	109	204	332	232	212
Practitioner	164	192	167	188	137
Other	145	419	255	183	175
Arrests	54	42	22	46	20
Manufacturer	1	0	0	0	3
Distributor	3	0	2	2	3
Pharmacy	18	13	11	19	8
Practitioner	30	25	7	20	6
Other	2	4	2	5	0
Seizures	18	12	9	6	2
Manufacturer	2	2	4	0	1
Distributor	7	3	1	2	1
Pharmacy	2	2	1	1	0
Practitioner	4	1	0	3	0
Other	3	4	3	0	0

## ENFORCEMENT ACTIVITY STATE AND LOCAL DRUG LAW ARRESTS

### DESCRIPTION OF DATA:

These figures are obtained from State and Local jurisdictions which voluntarily submit arrest data to the Federal Bureau of Investigation. These arrests differ from DEA/State and Local Cooperative arrests in that they represent efforts by the State or Local law enforcement agencies alone and in cooperative activity.

The data has many limitations, the most significant being the inconsistency of drug emphasis between jurisdictions and the variance of the size of its data base from year to year.

### ANALYSIS OF DATA:

Both the absolute number of arrests in CY 1977 and the arrest rate per 100,000 population increased in comparison with those of 1976.

By category, dangerous drug arrests decreased slightly in 1977. Marihuana arrests increased by more than 10%. Heroin and cocaine detention decreases noted in CY 1973 through 1976 have reversed and have increased substantially in CY 1977. Specifically, this category increased by approximately 50% from the 1976 figure.

## ENFORCEMENT ACTIVITY STATE AND LOCAL DRUG LAW ARRESTS

		CY73	CY74	CY75	CY76	CY77
Grand Total		484,242	454,948	508,189	500,540	569,293
Heroin/Cocaine	Possession Sale/Manuf.	67,794	71,882	66,573	50,054	52,375 22,772
Marihuana	Possession Sale/Manuf.	323,958	315,734	351,667	360,388	350,115 55,221
Dangerous Drugs	Possession Sale/Manuf.	92,490	67,332	89,949	90,098	63,192 25,618
Total	Possession Sale/Manuf.					465,682 103,611
Arrest Rate Per 100,000 Population		312.4	339.3	283.6	285.2	298.4

\*As of CY 77 drug law arrests are broken out by sale/manufacture or possession.

# ENFORCEMENT ACTIVITY LABORATORY ANALYSES PERFORMED

## DESCRIPTION OF DATA:

The data presented is submitted from seven DEA Regional Laboratories located throughout the United States and the DEA Special Testing and Research Laboratory located in the Washington, D.C. area. This laboratory system provides chemical analysis on evidence submitted by DEA and Task Force agents as well as State, Local and other Federal law enforcement agencies.

## ANALYSIS OF DATA:

The decrease in the number of exhibits first reported in CY 76 appears to be leveling off to approximately 30,000 exhibits per year. This decrease was due to DEA's greater emphasis on higher level drug cases and a concurrent de-emphasis on Task Force level cases. In addition, there have been fewer submissions from State and local law enforcement agencies due to the establishment of a number of new State and Local laboratories which analyze exhibits previously submitted to DEA.

# ENFORCEMENT ACTIVITY LABORATORY ANALYSES PERFORMED

DEA  
State and Local  
Other Federal Agencies  
TOTAL

FY76	TQ FY76	FY77	FY78	1Q FY79
20,459	4,015	17,369	16,505	4,392
14,938	2,896	13,347	10,969	2,476
1,006	256	1,786	1,692	442
36,403	7,167	32,502	29,166	7,310

DEA  
State and Local  
Other Federal Agencies  
TOTAL

CY74	CY75	CY76	CY77	CY78
22,103	25,253	18,697	17,194	16,912
15,928	13,608	14,925	11,827	11,341
1,433	943	1,016	1,733	1,822
39,464	39,804	34,638	30,754	30,075

# ENFORCEMENT ACTIVITY ALIENS ARRESTED WITHIN THE U.S. FOR A DRUG OFFENSE

## DESCRIPTION OF DATA:

These figures are obtained from the personal history form submitted for every defendant. The aliens represented by these statistics include DEA and Task Force defendants as well as those violators detained by other Federal agencies who were turned over to DEA for processing.

## ANALYSIS OF DATA:

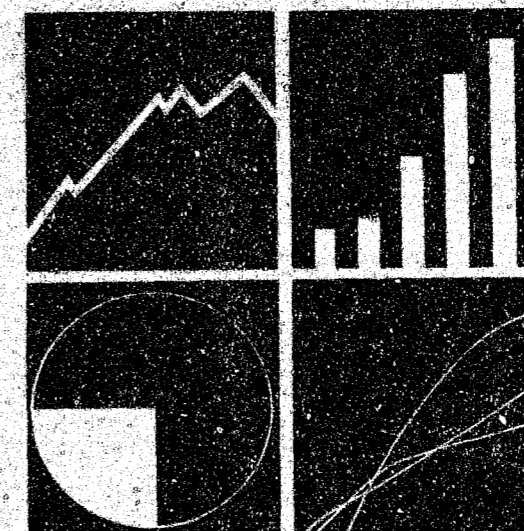
Alien arrests during CY 1978 increased slightly from CY 1977. Mexico, Colombia and Cuba have together accounted for more than 75% of the arrests every year since reporting began in CY 1975. Recently, there has been a significant decrease in Mexican arrests coupled with an increase in Colombian and Cuban arrests. Specifically, Mexico's share of the total has decreased from 67% in CY 1975 to 35% in CY 1978 while Colombia's has increased from 9% to 31% and Cuba's from 5% to 10%.

# ENFORCEMENT ACTIVITY ALIENS ARRESTED WITHIN THE U.S. FOR A DRUG OFFENSE

	CY75	CY76	CY77	CY78
Algeria	0	1	0	2
Argentina	16	3	6	8
Australia	4	2	7	1
Austria	2	1	1	1
Bahamas	1	2	0	0
Bangladesh	0	0	0	3
Barbados	0	0	2	2
Belgium	1	0	1	0
Belize	2	0	1	1
Bolivia	16	8	1	10
Brazil	2	7	9	5
British Virgin Islands	0	0	0	1
British West Indies	4	0	0	0
Canada	77	64	63	54
Chile	12	5	7	5
China	8	0	1	1
Colombia	167	183	239	446
Costa Rica	9	5	3	2
Cuba	91	68	105	139
Czechoslovakia	0	1	0	0
Dahomey	0	1	0	0
Denmark	1	0	1	0
Dominican Republic	38	28	22	24
Ecuador	17	10	12	22
Egypt	0	0	0	3
El Salvador	4	2	5	1
Estonia	1	0	0	0
Fiji Islands	1	0	0	0
France	3	5	7	5
Germany	6	5	6	6
Ghana	0	6	0	4
Grand Caymon	0	0	1	0
Great Britain	17	12	18	7
Greece	8	2	0	5
Grenada	0	0	0	1
Guatamala	4	0	4	2
Guyana	1	0	1	1
Haiti	0	10	2	6
Honduras	4	1	5	2
Hong Kong	1	0	3	4
Hungary	1	0	1	1
India	7	1	3	3

ENFORCEMENT ACTIVITY  
ALIENS ARRESTED WITHIN THE U.S. FOR A DRUG OFFENSE

	CY75	CY76	CY77	CY78
Iran	2	4	0	8
Iraq	1	1	0	0
Ireland	2	2	2	0
Israel	0	1	4	1
Italy	10	5	6	8
Jamaica	6	9	13	11
Japan	5	2	1	2
Kenya	1	0	0	1
Korea	0	1	0	0
Laos	0	0	0	2
Lebanon	1	0	2	3
Luxembourg	0	0	0	1
Malaysia	0	0	0	2
Mexico	1,270	1,238	774	507
Morocco	0	0	0	1
Nepal	1	0	0	0
Netherlands	2	1	4	10
New Zealand	2	0	1	3
Nicaragua	5	1	0	5
Nigeria	1	0	1	4
Norway	0	1	0	1
Pakistan	0	1	1	3
Panama	11	11	4	5
Peru	22	25	20	21
Philippines	1	0	3	2
Poland	0	2	2	0
Portugal	0	1	0	0
Santo Domingo	4	0	0	4
Senegal	1	0	0	0
Singapore	0	0	3	1
Soviet Union	2	0	1	0
Spain	3	4	4	3
Sri Lanka	1	0	0	0
Surinam	1	0	1	1
Sweden	1	0	2	0
Switzerland	1	2	0	1
Syria	0	1	0	0
Thailand	3	36	9	27
Trinidad	0	2	3	2
Turkey	0	4	1	1
Uruguay	2	1	0	3
Venezuela	3	5	20	12
Vietnam	0	0	0	1
Yemen	1	0	0	1
Yugoslavia	0	2	0	0
Total	1,897	1,796	1,419	1,435



DRUG  
ABUSE  
INDICATORS

**DRUG ABUSE INDICATORS  
TABLE OF CONTENTS**

<u>Section</u>	<u>Page</u>
Adjusted Heroin Price and Purity by Regional Distribution	32
National Illicit Drug Retail Prices	34
Drug Thefts by Geographic Regions	36
Drug Related Deaths Reported From Medical Examiners	38
Drug Related Injuries Reported From Hospital Emergency Rooms	40
Federally Funded Drug Treatment Admissions	42

# **DRUG ABUSE INDICATORS** **ADJUSTED HEROIN PRICE AND PURITY BY GEOGRAPHICAL DISTRIBUTION**

## DESCRIPTION OF DATA:

Heroin price and purity figures are based upon a systematic examination of the evidence exhibits removed from the illicit market by DEA. Both wholesale and retail figures are calculated utilizing an exclusion criterion which selects only those exhibits which fall within a certain range of values representative of a specific level of the illicit market.

The sensitivity of quarterly heroin price and purity statistics to the occurrence of potential data anomalies which could prejudice the sample group, requires that a statistical smoothing process be utilized to limit the influence of these occurrences. Additionally, beginning with CY 78, a further system refinement was added whereby the clustering of a large number of transactions in one location is difused. This is done by weighing regional means according to the intensity of the narcotic problem geographically prior to deriving a national figure.

## ANALYSIS OF DATA:

The significant decrease of the retail purity noted in mid-1977 continued during the calendar year 1978. Purity is now at the lowest point ever recorded since the inception of this system in 1971 and, when coupled with the continued increase in price, indicates an ongoing shortage of heroin at the "street level".

Exhibits this quarter at the mid-wholesale level are negligible. As a result, it is difficult to comment on availability.

# **DRUG ABUSE INDICATORS** **ADJUSTED HEROIN PRICE AND PURITY BY GEOGRAPHICAL DISTRIBUTION**

## PRICE - Per Milligram Pure

		CY74	CY75	CY76	CY77	CY78
National	-Wholesale	\$.22	\$.23	\$.24	\$.33	N/D
	Retail	1.23	1.15	1.40	1.59	2.19
East	-Wholesale	.30	.29	.31	N/D	N/D
	Retail	1.34	1.18	1.39	1.73	2.05
Central	-Wholesale	.23	.21	.25	N/D	N/D
	Retail	1.41	1.28	1.69	2.03	2.19
South	-Wholesale	N/D	.27	.37	N/D	N/D
	Retail	1.45	1.35	1.59	1.62	2.70
West	-Wholesale	.18	.18	.19	.27	N/D
	Retail	.92	.92	.95	1.23	1.71
Northwest	-Wholesale	N/D	N/D	N/D	N/D	N/D
	Retail	1.25	1.19	1.51	N/D	N/D

## PURITY

		CY74	CY75	CY76	CY77	CY78
National	-Wholesale	24.7%	25.4%	24.4%	23.3%	N/D
	Retail	5.7	6.3	6.1	5.1	3.5
East	-Wholesale	25.9	27.1	22.1	N/D	N/D
	Retail	4.9	5.6	5.9	4.5	2.8
Central	-Wholesale	19.1	33.5	23.1	N/D	N/D
	Retail	5.8	6.0	6.1	4.3	3.3
South	-Wholesale	N/D	18.1	22.8	N/D	N/D
	Retail	5.2	7.4	6.0	5.6	3.8
West	-Wholesale	26.3	25.6	28.4	27.7	N/D
	Retail	6.1	7.1	7.7	5.6	4.8
Northwest	-Wholesale	N/D	N/D	N/D	N/D	N/D
	Retail	5.0	6.0	5.3	5.2	N/D

## DRUG ABUSE INDICATORS NATIONAL ILLICIT DRUG RETAIL PRICES

### DESCRIPTION OF DATA:

Cocaine prices are derived from the cocaine retail price index based upon evidence exhibits purchased by DEA. The prices reported are for quarterly availability reports submitted by DEA field offices in twenty-three large metropolitan areas.

### ANALYSIS OF DATA:

Cocaine: The price of cocaine rose this quarter and is now slightly above the prices of last year. This tends to confirm suggestions by other sources that the demand for cocaine, while still high, is leveling off.

Dangerous Drugs: The prices reflected in this section are essentially identical to those of the last edition. This is due to the fact that a new reporting methodology was initiated this quarter in an effort to more accurately track dangerous drug availability. As a result, a three month lapse in price data was necessary to provide an audit period to insure the reporting accuracy of this new system.

The large increases in the prices of marihuana and barbiturates noted in late 1977 were sustained during CY 1978. The price of hallucinogens also remained high this year, confirming other information indicating that many heroin abusers are now using hallucinogens as well as stimulants and depressants to supplement their habit.

## DRUG ABUSE INDICATORS NATIONAL ILLICIT DRUG RETAIL PRICES

	CY74	CY75	CY76	CY77	CY78
Cocaine (gm.)	\$490.00	\$560.00	530.00	640.00	650.00
Marihuana (gm.)	.56	.65	.64	.69	.80
Hashish (gm.)	9.85	8.38	10.20	8.67	9.64
LSD (d.u.)	1.66	1.73	1.91	2.06	2.18
PCP (d.u.)*	-	-	-	-	1.59
Methamphetamine (d.u.)	.62	1.07	1.26	1.14	.93
Barbiturates (d.u.)	.75	.80	.83	.92	1.07
Amphetamine (d.u.)	.59	.63	.72	.74	.93
Methadone (d.u.)	3.45	5.17	4.62	3.49	3.79

\*New category as of September, 1978.

## DRUG ABUSE INDICATORS DRUG THEFTS BY GEOGRAPHIC REGIONS

### DESCRIPTION OF DATA:

Registered handlers of controlled substances (pharmacies, practitioners, manufacturers and hospitals) are required, under the Controlled Substances Act, to report the theft of all controlled drugs. This report includes the type of handler and the means of theft. The data presented summarizes the number of thefts and volume of drugs stolen by geographic region. The figures on the bottom half of the following page represent dosage units stolen in increments of a thousand.

### ANALYSIS OF DATA:

For the second successive quarter, the number of theft incidents decreased. The reported 2,410 thefts during the fourth quarter is the lowest number of thefts reported in almost two years. In spite of this decrease, the number of reported thefts increased by 10% in CY 1978 over 1977 figures.

Pharmacy thefts, while also dropping during the past two quarters, are also at levels above those of previous years. Only the Northeast reported a decrease in the number of pharmacy thefts. The number of thefts from manufacturers and distributors increased in 1978 when compared with previous years totals.

Losses of narcotics and stimulants during 1978 exceeded those of 1977. Only depressant losses declined in 1978 when compared with 1977 losses.

## DRUG ABUSE INDICATORS DRUG THEFTS BY GEOGRAPHIC REGIONS

### Number of Theft

Pharmacies - Subtotal	7,029	7,130	5,937	7,062	7,604
Northeast	1,450	1,465	1,305	1,534	1,509
South	2,152	2,253	1,513	1,983	2,090
Central	1,884	1,809	1,522	1,575	1,776
Northwest	271	316	221	262	283
West	1,272	1,287	1,376	1,708	1,946
Manuf/Distrib - Subtotal	1,099	1,179	1,685	1,673	2,130
Northeast	449	404	379	519	679
South	226	282	297	301	381
Central	263	246	693	470	618
Northwest	15	14	18	10	17
West	146	233	298	373	435
Other - Subtotal	1,164	1,205	1,252	1,339	1,296
Northeast	251	241	249	240	289
South	255	325	299	296	251
Central	361	324	350	379	358
Northwest	29	58	34	71	47
West	268	257	320	353	351

### Total

	CY74	CY75	CY76	CY77	CY78
Pharmacies - Subtotal	7,029	7,130	5,937	7,062	7,604
Northeast	1,450	1,465	1,305	1,534	1,509
South	2,152	2,253	1,513	1,983	2,090
Central	1,884	1,809	1,522	1,575	1,776
Northwest	271	316	221	262	283
West	1,272	1,287	1,376	1,708	1,946
Manuf/Distrib - Subtotal	1,099	1,179	1,685	1,673	2,130
Northeast	449	404	379	519	679
South	226	282	297	301	381
Central	263	246	693	470	618
Northwest	15	14	18	10	17
West	146	233	298	373	435
Other - Subtotal	1,164	1,205	1,252	1,339	1,296
Northeast	251	241	249	240	289
South	255	325	299	296	251
Central	361	324	350	379	358
Northwest	29	58	34	71	47
West	268	257	320	353	351
Total	9,292	9,514	8,874	10,074	11,030

### Volume Lost Dosage Units X 1000

Narcotics - Subtotal*	16,268	12,690	10,614	10,073	11,739
Northeast	3,383	2,820	3,891	2,572	3,222
South	3,133	3,620	2,211	2,491	2,827
Central	3,859	4,240	2,382	2,584	3,038
Northwest	435	430	236	346	288
West	5,458	1,580	1,894	2,080	2,364
Stimulants - Subtotal	10,937	10,710	12,314	9,595	11,637
Northeast	2,097	2,590	5,731	2,863	5,011
South	2,964	3,150	1,762	1,874	1,633
Central	3,838	3,020	2,877	1,932	2,528
Northwest	352	450	186	252	151
West	1,686	1,500	1,758	2,674	2,314
Depressants - Subtotal	16,236	19,470	43,513	24,600	23,379
Northeast	3,704	5,010	27,809	7,920	5,490
South	4,503	5,640	4,598	5,487	5,078
Central	4,589	5,050	6,371	5,464	7,236
Northwest	424	550	361	492	445
West	3,016	3,220	4,374	5,237	5,130

### Total

	CY74	CY75	CY76	CY77	CY78
Narcotics - Subtotal*	16,268	12,690	10,614	10,073	11,739
Northeast	3,383	2,820	3,891	2,572	3,222
South	3,133	3,620	2,211	2,491	2,827
Central	3,859	4,240	2,382	2,584	3,038
Northwest	435	430	236	346	288
West	5,458	1,580	1,894	2,080	2,364
Stimulants - Subtotal	10,937	10,710	12,314	9,595	11,637
Northeast	2,097	2,590	5,731	2,863	5,011
South	2,964	3,150	1,762	1,874	1,633
Central	3,838	3,020	2,877	1,932	2,528
Northwest	352	450	186	252	151
West	1,686	1,500	1,758	2,674	2,314
Depressants - Subtotal	16,236	19,470	43,513	24,600	23,379
Northeast	3,704	5,010	27,809	7,920	5,490
South	4,503	5,640	4,598	5,487	5,078
Central	4,589	5,050	6,371	5,464	7,236
Northwest	424	550	361	492	445
West	3,016	3,220	4,374	5,237	5,130
Total	43,441	42,870	66,441	44,268	46,754

\*Includes Methadone, Cocaine and Other Narcotics.

# **DRUG ABUSE INDICATORS** **DRUG RELATED DEATHS REPORTED FROM MEDICAL EXAMINERS**

## DESCRIPTION OF DATA:

In July 1973, DEA instituted a data collection system to capture death statistics related to drug use or abuse. This system involves the gathering of data from medical examiners in 21 major SMSA's throughout the continental United States and is part of the DEA/NIDA DAWN (Drug Abuse Warning Network) contract. Drug related deaths are reported by drug and age for all 21 SMSA's. Both overdoses and cases where drugs were found to be present but could not be affirmed as the cause of death are reported. Since heroin in the bloodstream quickly breaks down to a morphine base, the two drugs have been combined into one category. Statistics are reported according to a drug hierarchy reflected in the tables. When a death involving two or more drugs is reported, the statistic is shown only in the highest drug on the list. For example, if a death is related to heroin and amphetamines, it will be recorded only as a heroin death.

## ANALYSIS OF DATA:

DAWN statistics on drug related deaths for the third quarter of CY 1978 are incomplete and will not be reported or analyzed until more complete figures are received.

# **DRUG ABUSE INDICATORS** **DRUG RELATED DEATHS REPORTED FROM MEDICAL EXAMINERS**

## Hierarchy

Heroin/Morphine  
 Methadone  
 Other Narcotics  
 Barbiturates  
 Other Depressants  
 Amphetamines  
 Other Stimulants  
 Cocaine  
 Cannabis  
 Hallucinogens  
 Other Substances

Total

CY74	CY75	CY76	CY77	3Q CY78*
1,455	1,789	1,597	596	326
929	646	369	229	78
125	128	111	145	93
1,095	967	840	795	439
587	615	598	674	435
48	21	34	32	26
76	132	133	181	130
14	16	16	27	28
3	1	1	5	11
11	9	18	22	34
119	136	117	119	63
4,462	4,460	3,834	2,825	1,663

## AGE

0-9  
 10-19  
 20-29  
 30-39  
 40-49  
 50-59  
 60 and Over  
 Unknown

Total

CY74	CY75	CY76	CY77	3Q CY78*
1	0	0	0	1
371	291	228	161	93
1,958	2,076	1,762	1,098	611
901	880	841	588	367
531	534	420	350	217
347	337	266	283	173
340	326	305	341	196
13	16	12	4	5
4,462	4,460	3,834	2,825	1,663

\*Preliminary Figures.

# DRUG ABUSE INDICATORS DRUG RELATED INJURIES REPORTED FROM HOSPITAL EMERGENCY ROOMS

## DESCRIPTION OF DATA:

As with drug related deaths, injuries are reported from 21 major SMSA's. The statistics are compiled from hospital emergency room reports submitted to DAWN. In the case of injuries, however, the reports do not include age, only the drug of abuse.

Like deaths, injuries are reported according to a drug hierarchy and all injuries which involve more than one drug are shown only in the highest drug category.

## ANALYSIS OF DATA:

Heroin related injuries continued to decline in CY 1978. The 8,686 heroin injuries reported from DAWN emergency room facilities represents a 25% drop from 1977 figures and a 53% drop from 1976 figures. This decline continues to parallel the decline in street level heroin purity.

Hallucinogen related injuries are showing an increase, due almost entirely to the increased abuse of PCP. The number of hallucinogen injury reports increased 76% over 1977 figures and 137% from 1976.

Cocaine injuries continue to show a steady increase, increasing by almost 19% over 1977 reports. Increases in injury reports are also noted in cannabis and non-amphetamine stimulants. These increases are thought to be related to the heroin shortage.

# DRUG ABUSE INDICATORS DRUG RELATED INJURIES REPORTED FROM HOSPITAL EMERGENCY ROOMS

Heroin  
Methadone  
Other Narcotics  
Barbiturates  
Other Depressants  
Amphetamines  
Other Stimulants  
Cocaine  
Cannabis  
Hallucinogens  
Other Substances  
Total

CY74	CY75	CY76	CY77	CY78
12,860	17,942	18,576	11,568	8,686
5,596	4,927	5,902	4,944	4,257
4,695	5,445	5,639	6,023	6,394
12,847	12,397	12,186	10,636	8,755
43,747	52,433	52,289	51,788	50,168
2,016	2,114	2,106	2,011	2,057
1,882	2,693	3,286	3,653	3,819
613	855	1,215	1,496	1,776
2,584	2,254	2,719	3,565	4,412
3,555	2,931	2,976	4,004	7,066
2,560	2,680	2,992	2,768	2,424
92,955	106,671	109,886	102,456	99,814

## DRUG ABUSE INDICATORS FEDERALLY FUNDED DRUG TREATMENT ADMISSIONS

### DESCRIPTION OF DATA:

All treatment facilities throughout the United States which receive all or part of their funding from the Federal Government are required to submit admission data to the National Institute of Drug Abuse as part of the Client Oriented Data Acquisition Process (CODAP). The data presented on the following page represents national total admissions to CODAP programs by drug in both absolute numbers and percentages. The drug categories listed reflect the primary substance being abused at the time of admission and are not necessarily the only drug being used by patients.

Please note that reporting of CODAP data is currently running about three months behind the date reflected on the cover of this report.

### ANALYSIS OF DATA:

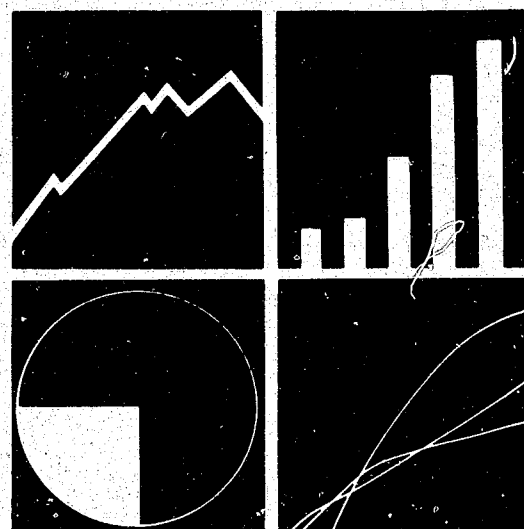
Proportionate admissions for primary heroin abuse have decreased substantially since 1976, having fallen over 30%. Conversely, the other opiates and hallucinogen categories have increased markedly, reflecting the increasing substitution of Dilaudid, Talwin, and PCP by heroin abusers who are finding it more and more difficult to obtain sufficient supplies of heroin. This is also reflected in the slowly increasing admissions for stimulants, as Ritalin has also become a major heroin substitute.

It is felt that the very high rate of primary marihuana admissions may be inaccurate. This is due to the fact that many young abusers are now mixing PCP with this substance and, as a result, many admissions attributed to marihuana may, in fact, be more properly a result of the effects of PCP.

## DRUG ABUSE INDICATORS FEDERALLY FUNDED DRUG TREATMENT ADMISSIONS

Primary Drug Used at  
Time of Admission

	CY76	CY77	30 CY78
Heroin	152,577 (62.4%)	114,325 (54.4%)	70,814 (43.4%)
Methadone	1,467 (.6%)	2,732 (1.3%)	2,591 (1.6%)
Other Opiates	5,135 (2.1%)	7,356 (3.5%)	7,590 (4.6%)
Alcohol	17,360 (7.1%)	17,443 (8.3%)	14,285 (8.7%)
Marihuana	21,273 (8.7%)	22,067 (10.5%)	19,883 (12.2%)
Barbiturates	11,003 (4.5%)	10,508 (5.0%)	7,190 (4.4%)
Tranquilizers	- nil	4,203 (2.0%)	4,124 (2.5%)
Other Sedatives	6,601 (2.7%)	4,203 (2.0%)	3,038 (1.9%)
Amphetamines	11,003 (4.5%)	10,928 (5.2%)	9,341 (5.7%)
Cocaine	2,934 (1.2%)	3,783 (1.8%)	3,735 (2.3%)
Hallucinogens	5,868 (2.4%)	7,776 (3.7%)	7,994 (4.9%)
Inhalants	2,934 (1.2%)	2,942 (1.4%)	2,388 (1.5%)
Over-the-Counter	489 (0.2%)	420 (0.2%)	462 (0.3%)
Other	978 (0.4%)	1,472 (0.7%)	881 (0.5%)
Missing Data	4,983 (2.0%)	0 (0.0%)	8,961 (5.5%)
Total Admissions	244,515	210,158	163,277



ORGANIZATION  
&  
TRAINING  
DATA

ORGANIZATION AND TRAINING DATA  
TABLE OF CONTENTS

<u>Section</u>	<u>Page</u>
DEA Personnel and Field Offices	46
Domestic and Foreign Enforcement Training	48

# ORGANIZATION AND TRAINING DATA DEA PERSONNEL AND FIELD OFFICES

## DESCRIPTION OF DATA:

These statistics reflect all DEA offices and personnel including Special Agents, Compliance Investigators and support personnel.

## ANALYSIS OF DATA:

With the reorganization of the Federal drug enforcement program in CY 1973, the number of personnel and offices within DEA grew appreciably.

This increase was due mainly to the transfer of Special Agents from other agencies to DEA in an effort to consolidate drug law enforcement at the Federal level.

At the beginning of FY 79, DEA went through an internal managerial reorganization. In effect, the 12 domestic regions were consolidated into a more workable number of five. Additionally, new district offices were established where regional offices previously existed.

# ORGANIZATION AND TRAINING DATA DEA PERSONNEL AND FIELD OFFICES

	CY74	CY75	CY76	CY77	CY78
DEA Personnel					
Total on-board	4,248	4,016	3,991	3,925	3,928
Special Agents on-board	2,322	2,059	2,015	1,968	1,945
Domestic Regions	1,754	1,524	1,513	1,460	1,419
Foreign Regions	162	180	167	165	159
Basic Agent School	0	0	0	0	0
Other Training	0	1	0	4	17
Headquarters	176	202	221	224	140
Task Force	230	152	114	115	126
Security Field Office	-	-	-	-	42
Air Wing	-	-	-	-	34
Intelligence Center	-	-	-	-	8
Compliance Investigators					
on-board	197	200	192	195	208
Domestic	191	193	186	188	194
Headquarters	6	7	6	7	14
DEA Offices					
Regional Offices	19	19	19	16	9
Domestic	13	13	13	12	5
Foreign	6	6	6	4	4
District/Resident	145	167	150	158	172
Domestic	97	113	99	102	120
Foreign	48	54	51	56	52

## ORGANIZATION AND TRAINING DATA DOMESTIC AND FOREIGN ENFORCEMENT TRAINING

### DESCRIPTION OF DATA:

DEA provides basic enforcement training for all of its own Special Agents and Compliance Investigators as well as specialized training for its Intelligence Analysts and Chemists.

DEA conducts training for municipal, county, state, and foreign enforcement officers, both in the field and at Headquarters. DEA offers a ten week academy program for English speaking foreign officials. The agency also conducts two-week law enforcement training schools both in Washington, D.C. and in locations throughout the U.S. and overseas. These schools provide law enforcement officers with the basic knowledge required to conduct narcotics and dangerous drug investigations.

In addition, programs in drug intelligence analysis, drug intelligence collection, conspiracy investigations and other special programs are conducted for state, local, and other federal officers. A number of academy building programs such as joint enforcement and joint methods of instruction schools are also being conducted for foreign officials.

### ANALYSIS OF DATA:

Basic training requirements for DEA personnel vary in accordance with changes in authorized new positions and attrition rates.

State, local and foreign training programs have, in general, been modified in favor of reducing class sizes in order to upgrade the overall effectiveness of the programs.

## ORGANIZATION AND TRAINING DATA DOMESTIC AND FOREIGN ENFORCEMENT TRAINING

	FY76	TQ FY76	FY77	FY78	1Q FY79
Drug Enforcement Admin.					
Special Agents	35	0	36	31	32
Compliance Investigators	13	0	16	0	30
Intelligence Analysts	109	0	91	73	0
State and Local					
Ten Week Academies	106	16	68	90	0
Two Week Schools	3,290	678	3,183	3,427	572
Chemist Seminars	79	13	89	47	33
International					
Advanced Schools (D.C.)	131	0	138	153	28
In-Country Schools	1,156	199	955	1,238	244
Executives	47	3	31	74	2

	CY74	CY75	CY76	CY77	CY78
Drug Enforcement Admin.					
Special Agents	204	85	0	36	63
Compliance Investigators	20	13	0	16	30
Intelligence Analysts	30	121	69	101	50
State and Local					
Ten Week Academies	97	102	101	93	41
Two Week Schools	3,454	3,002	3,186	3,071	3,253
Chemist Seminars	115	77	83	65	67
International					
Advanced Schools (D.C.)	143	153	119	129	144
In-Country Schools	2,235	1,618	923	1,159	1,052
Executives	13	31	46	35	62

**END**