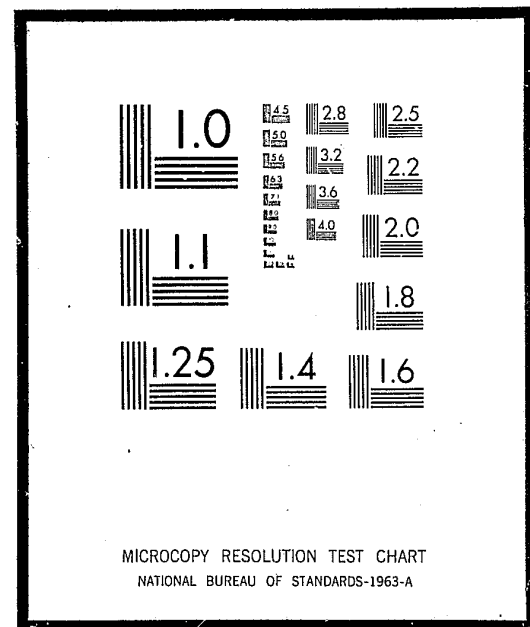


NCJRS

This microfiche was produced from documents received for inclusion in the NCJRS data base. Since NCJRS cannot exercise control over the physical condition of the documents submitted, the individual frame quality will vary. The resolution chart on this frame may be used to evaluate the document quality.



Microfilming procedures used to create this fiche comply with the standards set forth in 41CFR 101-11.504

Points of view or opinions stated in this document are those of the author(s) and do not represent the official position or policies of the U.S. Department of Justice.

U.S. DEPARTMENT OF JUSTICE
LAW ENFORCEMENT ASSISTANCE ADMINISTRATION
NATIONAL CRIMINAL JUSTICE REFERENCE SERVICE
WASHINGTON, D.C. 20531

Date filmed: 7/1/76

C
R
I
S
Y
S

CORRECTIONAL RECORDS INFORMATION SYSTEM of the District of Columbia Department of Corrections

TERMINAL OPERATOR'S HANDBOOK

The fact that the Law Enforcement Assistance Administration furnished financial support to the project described in this publication does not necessarily indicate the concurrence of LEAA in the material presented herein.

April 1972

U.S. DEPARTMENT OF JUSTICE
Law Enforcement Assistance Administration

FOREWORD

The Systems Development Division, Office of Criminal Justice Assistance, LEAA, reviewed CRISYS in 1971 and recognized it as an example of ADP applied successfully to the field of corrections. It is practical; it works.

To facilitate the transfer of this system, Grant Number SA-71-005 was awarded by LEAA providing for the development and publication of the documentation presented here. Potential users are encouraged to adapt the system to their own needs in whole or in part as deemed appropriate. Questions or comments may be addressed to the Director, Systems Development Division.

August 22, 1972

James T. Devine
Assistant Administrator
Office of Criminal Justice Assistance

CROSS INDEX

| | <u>TOPIC</u> | <u>PAGE NO.</u> |
|--|--|-----------------|
| ° General Information | General | 1 |
| ° Different Computer Terminals | General | 1 |
| ° How to Use the Terminals | Terminal Description | 1, 37 |
| ° How to obtain more than one screen full of information (more than one "PAGE") | Terminal Paging | 2 |
| ° How to go from one screen of information to another without "losing" the first one | Transaction Chaining | 3 |
| ° How many transactions and their use | Operator's Assistance Program | 3 |
| ° Updating records | Record Updating and Adding New Charges | 11 |
| ° Adding Charges | | |
| ° Examples on how to use each transaction | Examples and Formats | 12, 39 |
| ° What is obtained by each transaction | Examples and formats | 12, 39 |

PART VI. TERMINAL OPERATOR'S GUIDE

General

Interface with the real time component of CRISYS is accomplished by data communications terminals. Two types of terminals are used. The IBM 2265 visual display terminal and the IBM 2740 terminal. This section is to provide guidance for the personnel responsible for communicating with the system by use of the terminals.

2265 Visual Display Terminal

Terminal Description

The 2265 Display Terminal provides a rapid and efficient means of two-way visual communication with CRISYS. The terminal consists of a display screen and a typewriter like keyboard for operator control. Images to be displayed on the screen are initiated by the operator through use of the keyboard. The control keys are shown in Figure VI-1.

Entering a Message

- 1) Press the 'ERASE DPLY' key. This will erase the entire display screen, set the start of message symbol (▶) in the upper left corner of screen, and set the character position marker ().
2. When it is not desired to set the start of message symbol in position 1, hold the 'SHIFT' key down and press the 'START' key. The start of message symbol is placed in the position occupied by the character position marker, and the marker is advanced one position.
- 3) Key in the transaction data according to the appropriate format as described in Examples and Formats below.
- 4) After the entire message is displayed on the screen and is visually verified, depress the 'ENTER' key if an update is to take place, otherwise you may erase display or key in new transaction data (do not forget to key in the start of message (▶) symbol).

- 5) For printed copy press the 'PRINT' key.
- 6) If an error is made while keying the message, backspace over the erroneous entry and either SHIFT/SPACE over the erroneous entry or replace it with the correct character(s).

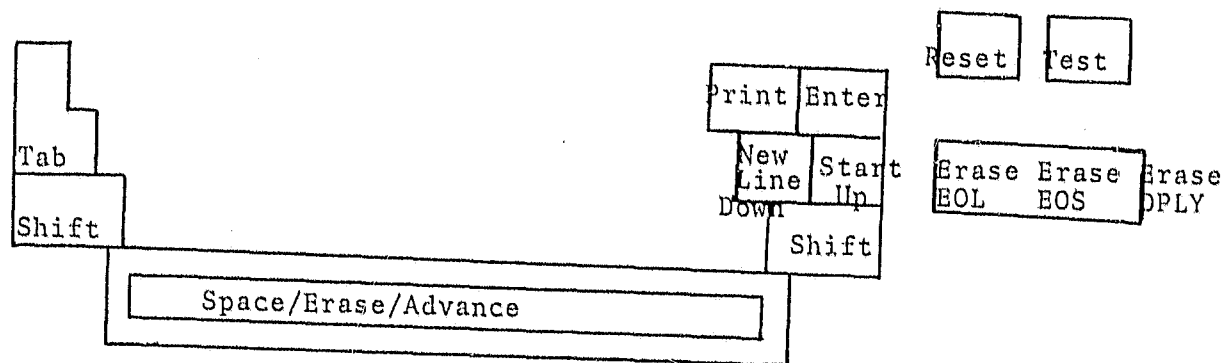


Figure VI-1

The following control switches are located on the right side of the screen: POWER ON switch, POWER OFF switch, and a Brightness control knob. The 2265 is turned on by depressing the POWER ON switch and turned off by depressing the POWER OFF switch. The Brightness control is located immediately above the POWER ON switch. Rotating the Brightness control knob clockwise increases the brightness of the characters displayed on the screen.

Terminal "Paging"

The data displayed on a 2265 terminal screen is referred to as a "page". In cases where a transaction response generates more than one page of information the operator must request the display of the remaining pages. This procedure is called "paging" and requires the operator to issue special commands.

While a terminal operator is viewing one of the pages of a response, he may request other pages of the same response with one of the following codes:

- P/N - request for next page
- P/P - request for previous page
- P/C - request for retransmission of current page
- P/L - request for last page
- P/n - request for a numbered page, where n=page number

Using these commands the operator can "flip" back and forth through the "pages" of the response.

Note: Always precede any command or transaction with start of message symbol (▶). Example: ▶ P/N

Transaction Chaining

The operator can hold the output from one transaction while inquiring for output from another transaction. This is accomplished by preceding the second transaction code with X as shown in the following example.

Normal transaction: ▶ TRANØ152364
 Chained transaction: ▶ XTRANØ152364

The chained transaction response is terminated with a T/C command. Immediately after a T/C command is processed the message viewed prior to chaining a transaction will display again on your screen.

Operator's Assistance Program

To aid the operator in using the terminal most effectively the system provides an AID transaction. AID provides the operator with a complete list of all transactions that can be used. The operator is also directed to the appropriate page in the Examples and Formats section of this manual, which gives detailed instructions as to how and when each transaction is to be used. To retrieve the information supplied by AID you need only key in a start of message (▶) followed by the characters AID. The response that will appear on the terminal screen is set forth below.

THERE ARE FOURTEEN TRANSACTIONS IN OUR SYSTEM FOR YOUR USE. IN ORDER FOR YOU TO FIND A PARTICULAR FIELD OR GROUP OF FIELDS, YOU MUST -PAGE THRU- THE NEXT FOUR PAGES. PAGE NUMBERS REFER TO YOUR OPERATORS GUIDE. TO SEE THE NEXT PAGE PLEASE DEPRESS THE ENTER KEY. ► P/N

VI-4

Upon depressing the 'ENTER' key the second 'page' of the AID message will display.

THE FOLLOWING TPDS ARE PRESENTLY IN OUR SYSTEM:

| | | |
|------|---|--------|
| TPD* | *DATA ELEMENTS RETRIEVED | *PAGE* |
| DMAO | NAME, DCDC NUMBER, INSTITUTION, DATE-OF-BIRTH, SEX, RACE, ADDRESS, OSR, PAROLE-DATE, COMMITMENT-DATE, NEXT-COURT-DATE, NEXT-HEARING, FINGERPRINT, RELEASE-DATE, MOVEMENT-TYPE, CHARGE, CONVICTED, MIN-SENT, MAX-SENT, COURT, COURT-DATE, CASE-NUMBER, BOND-AMOUNT, ATTORNEY, JUDGE. | VI-13 |

USED TO DISPLAY OPEN CHARGES ON ACTIVE RECORDS ONLY.
TO SEE ADDITIONAL TPDS PLEASE DEPRESS THE ENTER KEY. ► P/N

VI-5

Upon depressing the 'ENTER' key the third 'page' of the AID message will display.

VI-6

TRANS* *DATA ELEMENTS RETRIEVED *PAGE*
DMAA NAME,DCDC NUMBER,INSTITUTION,DATE-OF-BIRTH,SEX,RACE, VI-14
 ADDRESS,OSR,PAROLE-DATE,COMMITMENT-DATE,NEXT-COURT-DATE,
 NEXT-HEARING,FINGERPRINT,RELEASE-DATE,MOVEMENT-TYPE,CHARGE,
 CONVICTED,MIN-SENT,MAX-SENT,COURT,COURT-DATE,CASE-NUMBER,
 SENT-DATE,DATE-CHARGED. USED TO DISPLAY OPEN AND CLOSED
 CHARGES ON ACTIVE RECORDS ONLY.
DMIA FOR INACTIVE RECORD, SAME AS DMAA VI-14
TO SEE ADDITIONAL TRANS PLEASE DEPRESS THE ENTER KEY. ► P/N

Upon depressing the 'ENTER' key the fourth 'page' of the AID message will display.

VI-7

TRANS* *DATA ELEMENTS RETRIEVED *PAGE*
DNAM DCDC-NUMBER,NAME,DATE-OF-BIRTH,HEIGHT,WEIGHT,EYES,HAIR- VI-16
 USED TO OBTAIN AN INMATE'S DCDC NO.
PARL PAROLE-ELIGIBILITY-DATE,PROJECTED-RELEASE-DATE,PAROLE-OFFICER, VI-18
 DATE-WARRANT-EXECUTED,WARRANT-ISSUED-CODE,DAYS-GAINED,
 DAYS-LOST,DATE-WARRANT-DISPOSITION,WARRANT-DISPOSITION-CODE-
 USED TO UPDATE PAROLE DATA
CHAR COMMITMENT-STATUS,PENDING-ACTION,PRISONER-TYPE, VI-21
 CONVICTED-OFFENSE,FURTHER-HEARING-DATE,SENTENCE-DATE,
 MIN-SENT,MAX-SENT-USED TO UPDATE CHARGES DATA
TO SEE ADDITIONAL TRANS PLEASE DEPRESS THE ENTER KEY. ► P/N

Upon depressing the 'ENTER' key the fifth 'page' of the AID message will display.

| TRANS* | *DATA ELEMENTS RETRIEVED | *PAGE* |
|--------|---|--------|
| TRAN | INMATE-LOCATION, REASON-FOR-TRANSFER, DATE-OF-TRANSFER, DATE-OF-RELEASE, REASON-FOR-RELEASE-USED TO TRANSFER OR RELEASE AN INMATE | VI-23 |
| ADDC | OFFENSE, COURT, CASE-NUMBER, FINE, BOND, JUDGE & ATTORNEY-USED TO ADD A NEW CHARGE. | VI-25 |
| ADDR | HOUSE-NUMBER, STREET, CITY, STATE, ZIP-CODE-USED TO UPDATE ADDRESS DATA | VI-27 |

TO SEE ADDITIONAL TRANS PLEASE DEPRESS THE ENTER KEY. ► P/N

Upon depressing the 'ENTER' key the sixth 'page' of the AID message will display.

| TRANS* | *DATA ELEMENTS RETRIEVED | *PAGE* |
|--------|--|--------|
| MISC | POLICE-ID, OSR, DETAINER, CADRE, NARCOTICS, SHORT-TERM-DATE, MONTHLY-SALARY, ACCRUED-WAGES-USED TO UPDATE MISCELLANEOUS DATA | VI-29 |
| STIT | STATISTICAL INFORMATION ON INMATE POPULATION. | VI-32 |
| TALK | SENDS MESSAGES TO ANY OR ALL TERMINALS. | VI-33 |
| PDID | DCDC#, NAME, DATE-OF-BIRTH | VI-34 |
| CMPL | DISPLAYS ALL DATA FOR AN INMATE (EXCEPT MULTIPLE CHARGES) | VI-35 |

TO SEE THE NEXT PAGE PLEASE DEPRESS THE ENTER KEY. ► P/N

Upon depressing the 'ENTER' key the seventh 'page' of the AID message will display.

THERE ARE NO MORE TRANS. IF YOU WISH TO RETURN TO A PRECEDING PAGE,
REPLACE THE 1 IN THE FOLLOWING ENTRY WITH THE PAGE NUMBER DESIRED
P/1

Record Updating and Adding New Charges

The capability to display information as well as adding or updating records is provided by the 2265 display terminal. Fields that can be updated from the terminal will appear on the screen after entering the appropriate transaction. The character position marker is moved to the data to be changed and the new data keyed in. A new record is created by completing the blank record format displayed on the screen (see Examples and Formats).

Examples and Formats

This section provides detail instructions for the use of transactions from 2265 terminals with examples of how to enter transactions and data and response messages that will be displayed by the system.

Remember to precede all transactions with start of message symbol (▶). When updating or adding the is provided automatically.

If after entering any transaction in a manner that you consider correct and your response is incorrect or unusual, please consult with the ADP Unit after recording time of occurrence, transaction used and terminal used.

Operator's Procedures for Transaction DMAO

This transaction retrieves the following information from the master and charge files for open charges on active records: Name, DCDC Number, Date-of-Birth, Sex, Race, Address, OSR, Parole-Date, Commitment-Date, Next-Court-Date, Next-Hearing, Fingerprint, Release-Date, Case-Number, Charge, Convicted, Min-Sentence, Max-Sentence, Court, Court-Date, Case-Number, Bond-Amount, Attorney, Judge - Used for OPEN charges on ACTIVE records only.

Parentheses around a word indicate that you should press appropriate key.

1. After readying the terminal for transmission of the transaction, enter the following information in consecutive positions. Then press the appropriate keys to complete the transaction.

| <u>Field</u> | <u>Length</u> |
|-------------------------|--------------------------|
| Transaction Code "DMAO" | 4 character(s) |
| Space () | 1 character |
| DCDC Number | 6 character(s) (numeric) |

Format: (Start) DMAO (Space) DCDC# of inmate (Enter)

Example: ▶ DMAO 172374

2. Response: Computer displays all pertinent data fields. If 'no Record Found' is displayed, you entered incorrect DCDC# or this record is inactive in which case you should use transaction DMIA and key Step 1 again.

Note: More than one 'page' of response message possible.

```

NAME/XXXXXXXXXXXXXXXXXXXXX DCDC/XXXXXX INST/XX DOB/XX-XX-XX SEX/X RACE/X
ADDR/XXXXXXXXXXXXXXXXXXXXX OSR/XXXXXXX PAROLE/XX-XX-XX CODT/XX-XX-XX
NXTCRDATE/XX-XX-XX NEXTHEAR/XX-XX-XX FNRPRT/XXXXXXXXXXXXXXXXXXXXX
RELDA/XX-XX-XX MOVTYP/XX
CHARGE/XXXX CONVICTED/XXXX MINSN/XXXXXXX MAXSEN/XXXXXXX COURT/X
COURTDATE/XX-XX-XX CASE/XXXXXXXXXX BONDAMT/XXX ATTY/XXXXXXX JUDGE/X

```

Operator's Procedures for Transaction DMAA

This transaction retrieves the following information from the Master and Charge files for open and closed charges on active records: Name, DCDC Number, Date-of-Birth, Sex, Race, Address, OSR, Parole-Date, Commitment-Date, Next-Court-Date, Next-Hearing, Fingerprint, Release-Date, Movement-Type, Charge, Convicted, Min-Sentence, Max-Sentence, Court, Court-Date, Case-Number, Sentence-Date, Date-Charged. Used for OPEN and CLOSED charges on ACTIVE records only.

Parentheses around a word indicate that you should press appropriate key.

1. After readying the terminal for transmission of the transaction, enter the below information in consecutive positions. Then press the appropriate keys to complete the transaction.

| <u>Field</u> | <u>Length</u> |
|-------------------------|--------------------------|
| Transaction Code "DMAA" | 4 character(s) |
| Space () | 1 character |
| DCDC Number | 6 character(s) (numeric) |

Format: (Start) DMAA (Space) DCDC# of inmate (Enter)

Example: ▶ DMAA 172374

2. Response: Computer displays all pertinent data fields. If 'No Record Found' is displayed, you entered incorrect DCDC# or this record is inactive in which case you should use transaction DMIA and key Step 1 again.

Note: More than one 'page' of response message is possible.

NAME/XXXXXXXXXXXXXXXXXXXXX DCDC/XXXXXX INST/XX DOB/XX-XX-XX SEX/X RACE/X
 ADDR/XXXXXXXXXXXXXXXXXXXXX OSR/XXXXXX PAROLE/XX-XX-XX CODT/XX-XX-XX
 NXTCRDATE/XX-XX-XX NEXTHEAR/XXXXXX FNGRPRT/XXXXXXXXXXXXXXXXXXXXX
 RELDA/XX-XX-XX MOVTP/XX
 CHARGE/XXXX CONVICTED/XXXX MINSN/XXXXXX MAXSEN/XXXXXX COURT/X
 COURDATE/XX-XX-XX CASE/XXXXXXXXXX SENT-DATE/XX-XX-XX DATE-CHARGED/XX-XX-XX

Operator's Procedures for Transaction DMIA

This transaction retrieves the following information from the Master and Charge files for open and closed charges on inactive records: Name, DCDC Number, Date-of-Birth, Sex, Race, Address, OSR, Parole-Date, Commitment-Date, Next-Court-Date, Next-Hearing, Fingerprint, Release-Date, Movement-Type, Charge, Convicted, Min-Sentence, Max-Sentence, Court, Court-Date, Case-Number, Bond-Amount, Attorney, Judge - Used for ALL charges on INACTIVE records only.

Parentheses around a word indicate that you should press appropriate key.

1. After readying the terminal for transmission of the transaction, enter the following information in consecutive positions. Then press the appropriate keys to complete the transaction.

| <u>Field</u> | <u>Length</u> |
|-------------------------|--------------------------|
| Transaction Code "DMIA" | 4 character(s) |
| Space () | 1 character |
| DCDC Number | 6 character(s) (numeric) |

Format: (Start) DMIA (Space) DCDC# of inmate (Enter)

Example: ▶ DMIA 172374

2. Response: Computer displays all pertinent data fields. If 'No Record Found' is displayed, you entered incorrect DCDC# or this record is active and you should use transaction DMAO or DMAA and key Step 1 again.

Note: More than one 'page' of response message possible.

NAME/XXXXXXXXXXXXXXXXXXXXX DCDC/XXXXXX INST/XX DOB/XX-XX-XX SEX/X RACE/X
 ADDR/XXXXXXXXXXXXXXXXXXXXX OSR/XXXXXX PAROLE/XX-XX-XX CODT/XX-XX-XX
 NXTCRDATE/XX-XX-XX NEXTHEAR/XX-XX-XX FNGRPRT/XXXXXXXXXXXXXXXXXXXXX
 RELDA/XX-XX-XX MOVTP/XX
 CHARGE/XXXX CONVICTED/XXXX MINSN/XXXXXX MAXSEN/XXXXXX COURT/X
 COURDATE/XX-XX-XX CASE/XXXXXXXXXX SENT-DATE/XX-XX-XX DATE-CJARGE/XX-XX-XX

Operator's Procedures for Transaction DNAM

This transaction retrieves the following identifying information: DCDC-Number, Name, Date-of-Birth, Height, Weight, Eyes, Hair. Used to obtain an inmate's DCDC Number knowing his name.

Parentheses around a word indicate that you should press appropriate key.

1. After readying the terminal for transmission of the transaction, enter the following information in consecutive positions. If any of the fields are not known, do not enter any remaining fields to the right of the unknown one except for the last field when used as directed below. Then press the appropriate keys to complete the transaction.

| <u>Field</u> | <u>Length</u> |
|----------------------------------|--------------------------|
| Transaction Code "DNAM" | 4 character(s) |
| Space () or Field Separator (/) | 1 character |
| Last Name | 1-17 character(s) |
| Field Separator (/) | 1 character |
| First Name | 1-16 character(s) |
| Field Separator (/) | 1 character |
| Date of Birth (MM-DD-YY) | 8 character(s) (numeric) |
| *Field Separator (/) | 1 character |
| *First Acceptable Record Number | 3 character(s) (numeric) |

* Do not use this field unless requested to do so from a response to a previous inquiry. Otherwise, you may not retrieve all the possible records. When this field is used, indicate any blank fields with the field separator (/).

Format: (Start) DNAM (Space) Last name of inmate/First name of inmate/Date of birth (Enter)

Example: ► DNAM DOE/JOHN/03-31-72

Note: Last name is always required.

Options: If date of birth is unknown, key: (Start)DNAM(Space)Last Name/FirstName

If first name is unknown, key: (Start)DNAM(SPACE)LASTNAME// BIRTHDATE

If both DOB and first name not known: (START)DNAM(SPACE) LASTNAME

Important: Only ten names will be displayed at a time; to obtain names 11 thru 20, 21 thru 30, etc. please enter:

(START)DNAM(SPACE)LASTNAME/FIRSTNAME/BIRTHDATE/011

(START)DNAM(SPACE)LASTNAME//BIRTHDATE/011 *** NO FIRST NAME KNOWN

(START)DNAM(SPACE)LASTNAME/FIRSTNAME//011 *** NO BIRTH DATE KNOWN

(START)DNAM(SPACE)LASTNAME///011 *** NO FIRST NAME & BIRTHDATE KNOWN

2. Response: Computer displays DCDC Number and physical characteristics of one or several inmates.

*Note: More than one 'page' of response message is possible.

DCDC/XXXXXX STAT/XXXXX NAME/XXXXXXXXXXXXXXXXXXXXX DOB/XX-XX-XX HGT/XXX
WGT/XXX EYES/XX HAIR/XX

Operator's Procedures for Transaction PARL

This transaction allows retrieval and update of the following parole information: Parole-Eligibility-Date, Projected-Release-Date, Parole-Officer, Date-Warrant-Executed, Warrant-Issued-Code, Days-Gained, Days-Lost, Date-Warrant-Disposition, Warrant-Disposition-Code. Used to update the preceding parole information.

Parentheses around a word indicate that you should press appropriate key.

1. After readying the terminal for transmission of the transaction, enter the following information in consecutive positions. Then press the appropriate keys to complete the transaction.

| <u>Field</u> | <u>Length</u> |
|-------------------------|--------------------------|
| Transaction Code "PARL" | 4 character(s) |
| Space () | 1 character |
| DCDC Number | 6 character(s) (numeric) |

Format: (START)PARL(SPACE)DCDC# of inmate(ENTER)

Example: ► PARL 172374

2. Terminal Response:

All the parole fields are displayed on the 2265 (in addition to NAME and DCDC Number).

[Please note that start of message (►) symbol is already provided.]

```
► UPAR ***** .DCDC:XXXXXX .CC:XX NAME-XXXXXXXXXXXXXXXXXXXXX
*****YOU CAN UPDATE THE FOLLOWING FIELDS-
PAROLE-ELIGIBILITY.PE:XX-XX-XX PROJ-RELEASE.PR:XX-XX-XX
DATE-WARRANT-EXECUTED.DWE:XX-XX-XX WARRANT-ISSUED-CODE.WIC:X
DATE-WARRANT-DISPOSITION.DWD:XX-XX-XX WARRANT-DISP-CODE.WDC:X
DAYS-GAINED.DG:XXXX DAYS-LOST.DL:XXXX
PAROLE-OFFICER-NO.PON:XX
```

3. Fill in the blanks or replace the characters on the screen following the colons (:) with the appropriate new information. Then press "ENTER" key.

4. Terminal Response:

Parole information of XXXXXXX, DCDC # = XXXXX has been updated.

THIS PAGE INTENTIONALLY LEFT BLANK.

Operator's Procedures for Transaction CHAR

This transaction allows retrieval and update of the following charge information: Commitment-Status, Pending-Action, Prisoner-Type, Convicted-Offense, Further-Hearing-Date, Sentence-Date, Min-Sentence, Max-Sentence.

Parentheses around a word indicate that you should press appropriate key.

1. After readying the terminal for transmission of the transaction, enter the following information in consecutive positions. Then press the appropriate keys to complete the transaction.

| <u>Field</u> | <u>Length</u> |
|-------------------------|--------------------------|
| Transaction Code "CHAR" | 4 character(s) |
| Space () | 1 character |
| DCDC Number | 6 character(s) (numeric) |
| Field Separator (/) | 1 character |
| Offense | 4 character(s) |
| Field Separator (/) | 1 character |
| Court | 1 character |
| Field Separator (/) | 1 character |
| Case Number | 9 character(s) |

Format: Option 1--ENTER:(START)CHAR(SPAC)E.DCDC=DCDC# OF INMATE.
OFF=OFFENSE.CT=COURT CODE.CN=CASE # (ENTER)

Option 2--ENTER:(START)CHAR(SPAC)E.DCDC#/OFFENSE/COURTCODE/
CASE#(ENTER)

Note: In Option 1 you can interchange DCDC#,Court and Case #.
For example: (START)CHAR(SPAC)E.CN=XXXXXXXXX.OFF=XXXX.
CT=X.DCDC=XXXXXX

Where the X represents actual data

Important: The 'Keywords' DCDC - Off - CN - CT must be preceded by a period and followed by an equal sign EX: .OFF=

Example: ► CHAR 172374/0600/3/5921371A

2. Terminal Response:

All the charge fields are displayed on the 2265 (in addition to NAME and DCDC Number).

[Please note that start of message (►) is already provided.]

▶ UCHA*** .DCDC:XXXXXX .CC:XX NAME-XXXXXXXXXXXXXXXXXXXXX
 NUMBER-OF-CHARGES-XX OFFESNE.OFF:XXXX COURT.CT:X CASE-NO.CN:XXXXXXXXXX

YOU CAN UPDATE THE FOLLOWING FIELDS -

COMMITMENT-STATUS.CS:X PENDING-ACTION.PA:X PRISONER-TYPE.PT:X

CONVICTED-OFFENSE.CO:XXXX FURTHER-HEARING-DATE.FHD:XX-XX-XX

SENTENCE-DATE.SD:XX-XX-XX

MINIMUM-SENTENCE:XX-XX-XX MAXIMUM-SENTENCE:XX-XX-XX

3. Fill in the blanks or replace the characters on the screen following the colons (:) with the appropriate new information. Then press "ENTER" key.

4. Terminal Response:

Charge fields of XXXXXXX, DCDC # = XXXXX has been updated.

If data was invalid a self-explanatory message will appear.
 If 'No Record Found' appears, go to Step 1 and enter a valid DCDC#.

Operator's Procedures for Transaction TRAN

This transaction allows retrieval and update of the following transfer and release information: Inmate-Location, Reason-for-Transfer, Date-of-Transfer, Date-of-Release, Reason-for-Release. Used to transfer and release an inmate.

Parentheses around a word indicate that you should press appropriate key.

1. After readying the terminal for transmission of the transaction, enter the following information in consecutive positions. Then press the appropriate keys to complete the transaction.

| <u>Field</u> | <u>Length</u> |
|-------------------------|--------------------------|
| Transaction Code "TRAN" | 4 character(s) |
| Space () | 1 character |
| DCDC Number | 6 character(s) (numeric) |

Format: (START)TRAN(SPACE)DCDC# of inmate(ENTER)

Example: ▶ TRAN 172374

2. Terminal Response:

All related transfer fields are displayed on the 2265 (in addition to NAME and DCDC Number).

Please note that start of message (▶) is already provided.

▶ TRUP*****.DCDC=XXXXXX.NAME:XXXXXXXXXXXXXXXXXXXXX*.CC=XX*****

YOU CAN UPDATE THE FOLLOWING FIELDS -

INMATE-LOCATION.IL=XX REASON-FOR-TRANSFER.RT=XX

DATE-OF-TRANSFER.DT=XX-XX-XX DATE-OF-RELEASE.DR=XX-XX-XX

REASON-FOR-RELEASE.RR=XX

3. For transfers fill in or replace information in fields: Inmate-Location, Reason-for-Transfer and Date-of-Transfer on the screen with the appropriate new information. Then press "ENTER" key. For releases fill in fields: Date-of-Release and Reason-for-Release, then press "ENTER" key.

4. Terminal Response:

If your data was valid, a 'Transfer Was Effected' will display. If data was invalid--i.e. inmate location was not changed -- a self explanatory message will appear. If 'No Record Found' appears go to Step 1 and enter a valid DCDC#.

Operator's Procedures for Transaction ADDC

This transaction permits adding new charge records to the files. The following information must be provided: Offense, Court, Case-Number. The following information may be provided if desired: Fine, Bond, Judge, Attorney.

Parentheses around a word indicate that you should press appropriate key.

1. After readying the terminal for transmission of the transaction, enter the below information in consecutive positions. Then press the 'ENTER' key.

| <u>Field</u> | <u>Length</u> |
|-------------------------|------------------------|
| Transaction Code "ADDC" | 4 character(s) |
| Space () | 1 character |
| DCDC Number | 6 numeric character(s) |

Format: (START)ADDC(SPACE)DCDC# OF INMATE(ENTER)

Example: ► ADDC 172374

2. Terminal Response:

All the fields for adding a new charge are displayed on the 2265 (in addition to the Name and DCDC Number).

Please note that start of message (►) is already provided.

► ACHA****.DCDC=XXXXXX*NAME-XXXXXXXXXXXXXXXXXXXXX.CC=XX*****

**IF YOU WISH TO ADD A CHARGE YOU MUST FILL IN THE FOLLOWING FIELDS:
OFFENSE - COURT - CASE NUMBER ARE REQUIRED: FINE - BOND - JUDGE - ATTORNEY ARE OPTIONAL

OFFENSE.OF:XXXX COURT.CT:X CASE NUMBER.CN:XXXXXXX

FINE.FN:XXX BOND.BN:XXX JUDGE.JD:XX ATTORNEY.AT:XXXXX

3. To add a new charge to the charge file for this DCDC Number you must fill in the fields: Offense, Court and Case Number, then press the "ENTER" key.

4. Terminal Response:

If the record has been successfully added, the terminal response will be: Charge has been added to DCDC Number XXXXX.

Operator's Procedures for Transaction ADDR

This transaction allows retrieval and update of the following address information: House-Number, Street, City, State, Zip-Code.

Parentheses around a word indicate that you should press appropriate key.

1. After readying the terminal for transmission of the transaction, enter the following information in consecutive positions. Then press the appropriate keys to complete the transaction.

| <u>Field</u> | <u>Length</u> |
|-------------------------|--------------------------|
| Transaction Code "ADDR" | 4 character(s) |
| Space () | 1 character |
| DCDC Number | 6 character(s) (numeric) |

Format: (START)ADDR(SPACE)DCDC# OF INMATE(ENTER)

Example: ► ADDR 172374

2. Terminal Response:

All the address fields are displayed on the 2265 (in addition to NAME and DCDC Number).

Please note that start of message (►) is already provided.

► UADD*** .DCDC-XXXXXX .CC=XX NAME-XXXXXXXXXXXXXXXXXXXXX

YOU CAN UPDATE THE FOLLOWING FIELDS -

HOUSE-NO.HN:XXXX STREET.ST:XXXXXXXXXXXXX

CITY.CY:XXXXXXXX STATE.STA:XX ZIP-CODE.ZIP:XXXXX

3. Fill in the blanks or replace the characters on the screen following the colons (:) with the appropriate new information. Then press "ENTER" key.

4. Terminal Response:

If your data was valid a 'Record Updated' will display. If data was invalid a self-explanatory message will appear. If 'No Record Found' appears go to Step 1 and enter a valid DCDC#.

Operator's Procedures for Transaction MISC

This transaction allows retrieval and update of the following miscellaneous information from the Master file: Police-ID, OSR, Detainer, Cadre, Narcotics, Short-Term-Date, Monthly-Salary, Accrued-Wages.

Parentheses around a word indicate that you should press appropriate key.

1. After readying the terminal for transmission of the transaction, enter the following information in consecutive positions. Then press the appropriate keys to complete the transaction.

| <u>Field</u> | <u>Length</u> |
|-------------------------|--------------------------|
| Transaction Code "MISC" | 4 character(s) |
| Space () | 1 character |
| DCDC Number | 6 character(s) (numeric) |

Format: (START)MISC(SPACE)DCDC# OF INMATE(ENTER)

Example: ► MISC 172374

2. Terminal Response:

All the MISC fields are displayed on the 2265 (in addition to NAME and DCDC Number).

```
► UMIS*** .DCDC:XXXXXX .CC:XX NAME-XXXXXXXXXXXXXXXXXXXXX
YOU CAN UPDATE THE FOLLOWING FIELDS -

POLICE-ID.PID:XXXXXXX OSR-NUMBER.OSR:XXXXXXX
DETAINER.DET:X CADRE.CAD:X NARC-ADDICTION.NARC:XXXXXX
SHORT-TERM-DATE.STD:XX-XX-XX
MONTHLY-SALARY.MS:XXXXX ACCRUED-WAGES.AW:XXXXXX
```

3. Fill in the blanks or replace the characters on the screen following the colons (:) with the appropriate new information. Then press "ENTER" key.

4. Terminal Response:

If data was valid, a 'Record Updated' will be display.
If data was invalid a self-explanatory message will appear.
If 'No Record Found' appears, go to Step 1 and enter a valid DCDC#. If you did not wish to update or if you are looking at the record you updated and no further changes are required, key:(ENTER).

THIS PAGE INTENTIONALLY LEFT BLANK.

Operator's Procedures for Transaction STIT

This transaction retrieves statistical information on inmate population showing: Institution-Name and Population-Count.

Parentheses around a word indicates that you should press appropriate key.

1. After readying the terminal for transmission of the transaction, enter the following information in consecutive positions. Then press the appropriate keys to complete the transaction.

| <u>Field</u> | <u>Length</u> |
|----------------------------|----------------|
| Transaction Code "STIT" | 4 character(s) |
| Format: (START STIT(ENTER) | |
| Example: ► STIT | |

2. Terminal Response:

Computer displays present population distribution of all insititutions.

```

      DATE - XX(MON) XX(DAY)  XXXX(YEAR)
(INSTITUTION)  (POP)  (INSTITUTION)  (POP)  (INSTITUTION)  (POP)
XXXXXXXXXXXXXXXX XXXXX XXXXXXXXXXXXXXX XXXXX XXXXXXXXXXXXXXX XXXXX
XXXXXXXXXXXXXXXX XXXXX XXXXXXXXXXXXXXX XXXXX XXXXXXXXXXXXXXX XXXXX
XXXXXXXXXXXXXXXX XXXXX XXXXXXXXXXXXXXX XXXXX XXXXXXXXXXXXXXX XXXXX
XXXXXXXXXXXXXXXX XXXXX XXXXXXXXXXXXXXX XXXXX XXXXXXXXXXXXXXX XXXXX
    
```

Operator's Procedures for Transaction TALK

This transaction gives you the ability to send messages to other system users.

Parentheses around a word indicate that you should press the appropriate key.

1. After readying the terminal for transmission of the message, enter the following information in consecutive positions. Then press the appropriate keys to complete the transaction.

| <u>Field</u> | <u>Length</u> |
|-------------------------|------------------|
| Transaction Code "TALK" | 4 character(s) |
| Field Separator (/) | 1 character |
| Terminal ID Number | 4 character(s) |
| Field Separator (/) | 1 character |
| Message Text | 100 Character(s) |

Format: (START)TALK/TERMINAL ID/MESSAGE TEXT(ENTER)

Example: ► TALK/C007/ANY MESSAGE GOES HERE

2. Terminal Response:

The length of the message is limited to 100 characters including spaces. The message is transmitted to the addressed terminal.

```

YOUR MESSAGE HAS BEEN SENT TO XXXX-XXXXXXXXXX
TIME=XXXX  DATE=XXXX
    
```

3. Message format at receiving terminal

```

MESSAGE FROM-XXXX-XXXXXXXXXXXXXXXXXXXX
TIME=XXXX  DATE=XXXX
XXXXXXXXXXXXXXXXXXXXXXXXXXXXXXXXXXXX
    
```

Operator's Procedure for Transaction PDID

This transaction retrieves the following information from the Police ID Cross Reference File: DCDC#, Name, and Date-of-Birth. Used to obtain an inmate's DCDC# knowing his Police ID number.

Parentheses around a word indicate that you should press appropriate key.

1. After readying the terminal for transmission of the transaction, enter the following information in consecutive positions. Then press the appropriate keys to complete the transaction.

| <u>Field</u> | <u>Length</u> |
|-------------------------|----------------|
| Transaction Code "PDID" | 4 character(s) |
| Space () | 1 character |
| Police ID Number | 7 character(s) |

Format: (START)PDID(SPACE)POLICE ID # of inmate (ENTER)

Example: ► PDID 1512401

2. Terminal Response:

Computer displays pertinent data fields. If 'No Record Found' is displayed, you entered incorrect Police ID Number. Get correct Police ID Number and key Step 1 again.

DCDC#=XXXXXXX NAME=XXXXXXXXXXXXXXXXXXXXX
 DOB=XX-XX-XX

Operator's Procedures for Transaction CMPL

This transaction retrieves all data fields of the Master record.

Parentheses around a word indicate that you should press appropriate key.

1. After readying the terminal for transmission of the transaction, enter the following information in consecutive positions. Then press the appropriate keys to complete the transaction.

| <u>Field</u> | <u>Length</u> |
|-------------------------|----------------|
| Transaction Code "CMPL" | 4 character(s) |
| Space () | 1 character |
| DCDC Number | 6 character(s) |

Format: (START)CMPL(SPACE)DCDC# of inmate(ENTER)

Example: ► CMPL 172374

2. Terminal Response:

Computer displays all remaining data fields in the master record. If 'No Record Found' is displayed, you entered incorrect DCDC#. Get correct DCDC# and key Step 1 again.

DCDC= NAME=
 TIMES-COMMITTED= DATE-COMMITTED= ALIAS-USED= WELFARE= MARITAL=
 DEPENDENTS= CHURCH= EDUCATION= OCCUPATION=
 HOURLY-WAGE= NATIVITY= DISABILITY= NARCOTICS1=
 ALCOHOL-ADDICT= DISABLE-TREATMENT= AMOUNT-SURRENDERED=
 INSTITUTION-FROM= TO SEE THE NEXT PAGE, DEPRESS THE ENTER KEY ► P/N

DCDC= NAME=
 SOC-SEC= DRIVERS-LICENSE= DRIVERS-STATE=
 PROGRAM PARTICIPATION IN INSTITUTION:
 EDUCATIONAL= VOCATIONAL= THERAPY= COUNSELING=
 MONTHS-IN-PROGRAM= NEW-SKILLS-ACQUIRED= MONTHLY-SALARY=
 ACCRUED-WAGES= TO SEE THE NEXT PAGE, DEPRESS THE ENTER KEY ► P/N

DCDC= NAME=
 NUMBER-OF-ESCAPES= LAST-ESCAPE-DATE= NUMBER-OF-ABSCONDS=
 LAST-ABSCOND-DATE= CONDUCT-LAST-12-MONTHS: JAN= FEB= MAR=
 APL= MAY= JUNE= JULY= AUG= SEPT= OCT= NOV= DEC=
 DAYS-OF-PAROLE-SUPERVISION=
 DEGREE-OF-SUPERVISION= TIMES-PAROLED= DATE-RELEASED-FROM-PAROLE=
 EMPLOY-ON-RELEASE= HOURLY-WAGE-ON-RELEASE= DATE-OF-LAST-INTERVIEW=
 TO SEE THE NEXT PAGE, DEPRESS THE ENTER KEY ► P/N

DCDC= NAME=
 HEARING DATA:
 PRELIMINARY: NEXT-ELIGIBLE-DATE= LAST-HEARING-DATE= DISPOSITION=
 CASE-NUMBER=
 INITIAL: NEXT-ELIGIBLE-DATE= LAST-HEARING-DATE= DISPOSITION=
 CASE-NUMBER=
 REHEARING: NEXT-ELIGIBLE-DATE= LAST-HEARING-DATE= DISPOSITION=
 CASE-NUMBER=
 VIOLATION: NEXT-ELIGIBLE-DATE= LAST-HEARING-DATE= DISPOSITION=
 CASE-NUMBER=
 CONTINUED: NEXT-ELIGIBLE-DATE= LAST-HEARING-DATE= DISPOSITION=
 CASE-NUMBER= LAST PAGE

2740 Typewriter Terminal

Terminal Description

The IBM 2740 Communications Terminal provides the capabilities of the standard typewriter combined with the flexibility of a communications terminal. The terminal consists of two parts:

- 1) A standard selectric typewriter.
- 2) The necessary controls that make it possible for the 2740 to become a communications device.

The keyboard controls are shown in Figure VI-2.

Transmission Controls and Indicators

Power is supplied by pressing the on portion of the on/off switch. Power is cut off by pressing the off portion of this switch.

The switch marked COM/LOCAL should be pressed on the COM portion placing the terminal in communicate mode. In this mode the terminal can alternately transmit and receive from the communication line.

The "S" (Standby) light is on when the terminal is in the communicate mode, in a ready condition and neither transmitting nor receiving.

The "T" (Transmit) light is on during the transmission of data.

The "R" (Receive) light is on when the terminal is ready to receive data.

The "INDEX" key advances the print line.

Entering a Message

Communication with CRISYS is affected by executing the following steps:

- 1) Press the "BID" key and wait for the bell to ring, this places the terminal in the transmit status as indicated by the "T" light being on.
- 2) Key in the transaction data according to the appropriate format as described in Examples and Formats below.

- 3) After all characters have been typed in, press the "RETURN" key to return the carrier to the left margin stop and advance to the next line.
- 4) Press the "EOT" key to indicate the end of transmission.

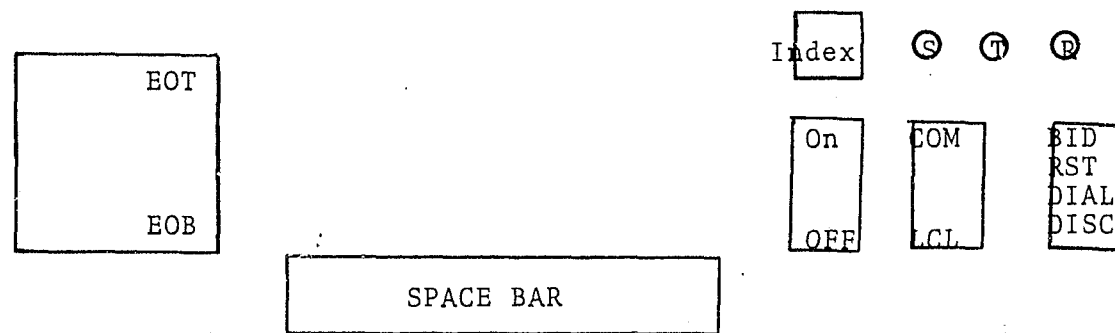


Figure VI-2

- 5) If an error is made while keying the message, key in a '\$' sign and press the EOT key. This will cancel the entire message and the message may be reentered.

Examples and Formats

This section provides detail instructions for the execution of transactions from 2740 terminals with examples of input and output formats.

Operator's Procedures for Transaction DMAO

This transaction retrieves the following information from the Master and Charge files for open charges on active records: Name, DCDC Number, Date-of-Birth, Sex, Race, Address, OSR, Parole-Date, Commitment-Date, Next-Court-Date, Next-Hearing, Fingerprint, Release-Date, Case-Number, Charge, Convicted, Min-Sentence, Max-Sentence, Court, Court-Date, Case-Number, Bond-Amount, Attorney, Judge - Used for OPEN charges on ACTIVE records only.

Parentheses around a word indicates that you should press appropriate key.

1. After readying the terminal for transmission of the transaction, enter the following information in consecutive positions. Then press the appropriate keys to complete the transaction

| <u>Field</u> | <u>Length</u> |
|-------------------------|--------------------------|
| Transaction Code "DAMO" | 4 character(s) |
| Space () | 1 character |
| DCDC Number | 6 character(s) (numeric) |

Format: (BID)DMAO(SPACE)DCDC# of Inmate(EOT)

Example: DMAO 172374

2. Terminal Response:

Computer displays all pertinent data fields. If 'No Record Found' is displayed, you entered incorrect DCDC# or this record is inactive in which case you should use transaction DMIA and key Step 1 again.

NAME/XXXXXXXXXXXXXXXXXXXXX DCDC/XXXXXX INST/XX DOB/XX-XX-XX SEX/X RACE/X
 ADDR/XXXXXXXXXXXXXXXXXXXXX OSR/XXXXXX PAROLE/XX-XX-XX CODE/XX-XX-XX
 NXTCRTDATE/XX-XX-XX NEXTHEAR/XX-XX-XX FNGRPRT/XXXXXXXXXXXXXXXXXXXXX
 RELDA/XX-XX-XX MOVVYP/XX
 CHARGE/XXXX CONVICTED/XXXX MINSN/XXXXXX MAXSEN/XXXXXX COURT/X
 COURTDAT/XX-XX-XX CASE/XXXXXXXXXX BONDAMT/XXX ATTY/XXXXXXXXXX JUDGE/X

Operator's Procedures for Transaction DMAA

This transaction retrieves the following information from the Master and Charge files for open and closed charges on active records: Name, DCDC Number, Date-of-Birth, Sex, Race, Address, OSR, Parole-Date, Commitment-Date, Next-Court-Date, Next-Hearing, Fingerprint, Release-Date, Movement-Type, Charge, Convicted, Min-Sentence, Max-Sentence, Court, Court-Date, Case-Number, Sentence-Date, Date-Charged. Used for OPEN and CLOSED charges on ACTIVE records only.

Parentheses around a word indicate that you should press appropriate key.

1. After readying the terminal for transmission of the transaction, enter the following information in consecutive positions. Then press the appropriate keys to complete the transaction.

| <u>Field</u> | <u>Length</u> |
|-------------------------|--------------------------|
| Transaction Code "DMAA" | 4 character(s) |
| Space () | 1 character |
| DCDC Number | 6 character(s) (numeric) |

Format: (BID)DMAA(SPACE)DCDC# of Inmate(EOT)

Example: DMAA 172374

2. Terminal Response:

Computer displays all pertinent data fields. If 'No Record Found' is displayed, you entered incorrect DCDC# or this record is inactive in which case you should use TPD DMIA and key Step 1 again.

NAME/XXXXXXXXXXXXXXXXXXXXX DCDC/XXXXXX INST/XX DOB/XX-XX-XX SEX/X
 RACE/X ADDR/XXXXXXXXXXXXXXXXXXXXX OSR/XXXXXX PAROLE/XX-XX-XX
 CODT/XX-XX-XX NXTCRTDATE/XX-XX-XX NEXTHEAR/XX-XX-XX
 FNGRPRT/XXXXXXXXXXXXXXXXXXXXX RELDA/XX-XX-XX MOVVYP/XX
 CHARGE/XXXX CONVICTED/XXXX MINSN/XXXXXX MAXSEN/XXXXXX COURT/X
 COURTDAT/XX-XX-XX CASE/XXXXXXXXXX SENT-DATE/XX-XX-XX DATE-CHARGED/XX-
 XX-XX

Operator's Procedures for Transaction DMIA

This transaction retrieves the following information from the Master and Charge files for open and closed charges on inactive records: Name, DCDC Number, Date-of-Birth, Sex, Race, Address, OSR, Parole-Date, Commitment-Date, Next-Court-Date, Next-Hearing, Fingerprint, Release-Date, Movement-Type, Charge, Convicted, Min-Sentence, Max-Sentence, Court, Court-Date, Case-Number, Bond-Amount, Attorney, Judge. Used for ALL charges on INACTIVE records only.

Parentheses around a word indicates that you should press appropriate key.

1. After readying the terminal for transmission of the transaction, enter the following information in consecutive positions. Then press the appropriate keys to complete the transaction.

| <u>Field</u> | <u>Length</u> |
|-------------------------|--------------------------|
| Transaction Code "DMIA" | 4 character(s) |
| Space () | 1 character |
| DCDC Number | 6 character(s) (numeric) |

Format: (BID)DMIA(SPACE)DCDC# of Inmate(EOT)

Example: DMIA 172374

2. Terminal Response:

Computer displays all pertinent data fields.
If 'No Record Found' is displayed, you entered incorrect DCDC# or this record is active and you should use TPD's DMAO or DMAA and key Step 1 again.

NAME/XXXXXXXXXXXXXXXXXXXXX DCDC/XXXXXX INST/XX DOB/XX-XX-XX SEX/X RACE/X
 ADDR/XXXXXXXXXXXXXXXXXXXXX OSR/XXXXXX PAROLE/XX-XX-XX CODT/XX-XX-XX
 NXTCRDATE/XX-XX-XX NEXTHEAR/XX-XX-XX FNRPRT/XXXXXXXXXXXXXXXXXXXX
 RELDA/XX-XX-XX MOVTP/XX
 CHARGE/XXXX CONVICTED/XXXX MINSN/XXXXXX MAXSEN/XXXXXX COURT/X
 COURDATE/XX-XX-XX CASE/XXXXXXXX SENT-DATE/XX-XX-XX DATE-CHARGE/XX-XX-XX

Operator's Procedures for Transaction DNAM

This transaction retrieves the following identifying information: DCDC-Number, Name, Date-of-Birth, Height, Weight, Eyes, Hair. Used to obtain an inmate's DCDC Number knowing his name.

Parentheses around a word indicates that you should press appropriate key.

1. After readying the terminal for transmission of the transaction, enter the following information in consecutive positions. If any of the fields are not known, do not enter any remaining fields to the right of the unknown one except for the last field when used as directed below. Then press the appropriate keys to complete the transaction.

| <u>Field</u> | <u>Length</u> |
|---------------------------------|--------------------------|
| Transaction Code "DNAM" | 4 character(s) |
| Space () | 1 character |
| Last Name | 1-17 character(s) |
| Field Separator (/) | 1 character |
| First Name | 1-16 character(s) |
| Field Separator (/) | 1 character |
| Date of Birth (MM-DD-YY) | 8 character(s) (numeric) |
| *Field Separator (/) | 1 character |
| *First Acceptable Record Number | 3 character(s) (numeric) |

* Do not use this field unless requested to do so from a response to a previous inquiry. Otherwise, you may not retrieve all the possible records. When this field is used, indicate any blank fields with the field separator (/).

Format: (BID)DNAM(SPACE)LAST NAME OF INMATE/FIRST NAME OF INMATE/DATE OF BIRTH(EOT)

Example: DNAM DOE/JOHN/03-31-72

Note: Last name is always required.

Options: If date of birth is unknown key: (START)DNAM(SPACE) LASTNAME/FIRSTNAME

If first name is unknown, key: (START)DNAM(SPACE) LASTNAME//BIRTHDATE

If both DOB and first name are not known: (START)DNAM (SPACE)LASTNAME

Important: Only ten names will be displayed at a time; to obtain names 11 thru 20, 21 thru 30, etc. enter:
 (BID)DNAM(SPACE) LASTNAME/FIRSTNAME/BIRTHDATE/011(EOT)
 (BID)DNAM(SPACE) LASTNAME//BIRTHDATE/011 ***NO FIRST NAME
 (BID)DNAM(SPACE) LASTNAME/FIRSTNAME//011 ***NO BIRTH DATE
 (BID)DNAM(SPACE) LASTNAME///011 ***NO FIRSTNAME & BIRTH DATE

2. Terminal Response:

Computer displays physical characteristics of one or several inmates.

DCDC/XXXXXX STAT/XXXXX NAME/XXXXXXXXXXXXXXXXXXXXX DOB/XX-XX-XX HGT/XXX
 WGT/XXX EYES/XX HAIR/XX

Operator's Procedures for Transaction PARL

This transaction allows retrieval and update of the following parole information: Parole-Eligibility-Date, Projected-Release-Date, Parole-Officer, Date-Warrant-Executed, Warrant-Issued-Code, Days-Gained, Days-Lost, Date-Warrant-Disposition, Warrnat-Disposition-Doce. Used to update the preceding parole information.

Parentheses around a word indicates that you should press appropriate key.

1. After readying the terminal for transmission of the transaction, enter the following information in consecutive positions. Then press the appropriate keys to complete the transaction.

| Field | Length |
|-------------------------|--------------------------|
| Transaction Code "PARL" | 4 character(s) |
| Space () | 1 character |
| DCDC Number | 6 character(s) (numeric) |

Format: (BID)PARL(SPACE)DCDC# OF INMATE(EOT)

Example: PARL 172374

2. Terminal Response:

All the parole fields are printed on the 2740 (in addition to NAME and DCDC Number).

UPAR ***** .DCDC:XXXXXX .CC:XX NAME-XXXXXXXXXXXXXXXXXXXXX

YOU CAN UPDATE THE FOLLOWING FIELDS -

PAROLE-ELIGIBILITY.PE:XX-XX-XX PROJ-RELEASE.PR:XX-XX-XX
 DATE-WARRANT-EXECUTED.DWE:XX-XX-XX WARRANT-ISSUED-CODE.WIC:X
 DATE-WARRANT-DISPOSITION.DWD:XX-XX-XX WARRANT-DISP-CODE.WDC:X
 DAYS-GAINED.DG:XXXX DAYS-LOST.DL:XXXX
 PAROLE-OFFICER-NO.PON=XX

Operator's Procedures for Transaction CHAR

This transaction allows retrieval and update of the following charge information: Commitment-Status, Pending-Action, Prisoner-Type, Convicted-Offense, Further-Hearing-Date, Sentence-Date, Min-Sentence, Max-Sentence.

Parentheses around a word indicates that you should press appropriate key.

1. After readying the terminal for transmission of the transaction, enter the following information in consecutive positions. Then press the appropriate keys to complete the transaction.

| <u>Field</u> | <u>Length</u> |
|-------------------------|--------------------------|
| Transaction Code "CHAR" | 4 character(s) |
| Space () | 1 character |
| DCDC Number | 6 character(s) (numeric) |
| Field Separator (/) | 1 character |
| Offense | 4 character(s) |
| Field Separator (/) | 1 character |
| Court | 1 character |
| Field Separator (/) | 1 character |
| Case Number | 9 character(s) |

Format: Option 1--enter: (BID)CHAR(SPACE).DCDC=DCDC# OF INMATE.OFF=OFFENCE .CT=COURT CODE.CN=CASE# (EOT)

Option 2--enter: (BID)CHAR(SPACE)DCDC#/OFFENSE/COURTCODE/CASE# (EOT)

Note: In Option 1 you can interchange DCDC#, court and case #.
For example: (BID)CHAR(SPACE).CN=XXXXXXXXX.OFF=XXXX.CT=X.
DCDC=XXXXXX

Where the X represent actual data.

Important: The 'Keywords' DCDC - OFF - CN - CT must be preceded by a period and followed by an equal sign; example:
.OFF=

Example: CHAR 172374/0600/3/5921371a

2. Terminal Response:

All the charge fields are printed on the 2740 (in addition to NAME and DCDC Number).

UCHA*** .DCDC:XXXXXX .CC:XX NAME-XXXXXXXXXXXXXXXXXXXX

NUMBER-OF-CHARGES-XX OFFENSE.OFF:XXXX COURT.CT:X CASE-NO.CN:XXXXXX

YOU CAN UPDATE THE FOLLOWING FIELDS -

COMMITMENT-STATUS.CS:X PENDING-ACTION.PA:X PRISONER-TYPE.PT:X

CONVICTED-OFFENSE.CO:XXXX FURTHER-HEARING-DATE.FHD:XX-XX-XX

SENTENCE-DATE.SD:XX-XX-XX

MINIMUM-SENTENCE:XX-XX-XXX MAXIMUM-SENTENCE:XX-XX-XX

Operator's Procedures for Transaction TRAN

This transaction allows retrieval and update of the following transfer and release information: Inmate-Location, Reason-for-Transfer, Date-of-Transfer, Date-of-Release, Reason-for-Release. Used to transfer and release an inmate.

Parentheses around a word indicates that you should press appropriate key.

- 1. After readying the terminal for transmission of the transaction, enter the following information in consecutive positions. Then press the appropriate keys to complete the transaction.

| <u>Field</u> | <u>Length</u> |
|-------------------------|--------------------------|
| Transaction Code "TRAN" | 4 character(s) |
| Space () | 1 character |
| DCDC Number | 6 character(s) (numeric) |

Format: (BID)TRAN(SPACE)DCDC# OF INMATE(EOT)

Example: TRAN 172374

- 2. Terminal Response:

All related transfer fields are displayed on the 2740 (in addition to NAME and DCDC Number).

TRUP*****.DCDC=XXXXXX.NAME:XXXXXXXXXXXXXXXXXXXX*.CC=XX*****

YOU CAN UPDATE THE FOLLOWING FIELDS -

INMATE-LOCATION.IL=XX REASON-FOR-TRANSFER.RT=XX

DATE-OF-TRANSFER.DT=XX-XX-XX DATE-OF-RELEASE.DR=XX-XX-XX

REASON-FOR-RELEASE.RR=XX

Operator's Procedures for Transaction ADDR

This transaction allows retrieval and update of the following address information: House-Number, Street, City, State, Zip-Code.

Parentheses around a word indicates that you should press appropriate key.

- 1. After readying the terminal for transmission of the transaction, enter the following information in consecutive positions. Then press the appropriate keys to complete the transaction.

| <u>Field</u> | <u>Length</u> |
|-------------------------|--------------------------|
| Transaction Code "ADDR" | 4 character(s) |
| Space () | 1 character |
| DCDC Number | 6 character(s) (numeric) |

Format: (BID)ADDR(SPACE)DCDC# OF INMATE(EOT)

Example: ADDR 172374

- 2. Terminal Response:

All the address fields are displayed on the 2740 (in addition to NAME and DCDC Number).

UADD***.DCDC=XXXXXX.CC=XX NAME-XXXXXXXXXXXXXXXXXXXX

YOU CAN UPDATE THE FOLLOWING FIELDS -

HOUSE-NO.HN:XXXX STREET.ST:XXXXXXXXXXXX

CITY.CY:XXXXXXX STATE.STA:XX ZIP-CODE.ZIPLXXXX

Operator's Procedures for Transaction MISC

This transaction allows retrieval and update of the following miscellaneous information from the Master file: Police-ID, OSR, Detainer, Cadre, Narcotics, Short-Term-Date, Monthly-Salary, Accrued-Wages.

Parentheses around a word indicates that you should press appropriate key.

1. After readying the terminal for transmission of the transaction, enter the following information in consecutive positions. Then press the appropriate keys to complete the transaction.

| <u>Field</u> | <u>Length</u> |
|-------------------------|--------------------------|
| Transaction Code "MISC" | 4 character(s) |
| Space () | 1 character |
| DCDC Number | 6 character(s) (numeric) |

Format: (BID)MISC(SPACE)DCDC# OF INMATE(EOT)

Example: MISC 172374

2. Terminal Response:

All the MISC fields are displayed on the 2740 (in addition to NAME and DCDC Number).

:UMIS*** .DCDC:XXXXXX .CC:XX NAME-XXXXXXXXXXXXXXXXXXXX

YOU CAN UPDATE THE FOLLOWING FIELDS -

POLICE-ID.PID:XXXXXX OSR-NUMBER.OSR:XXXXXX

DETAINER.DET:X CADRE.CAD:X NARC-ADDITION.NARC:XXXXXX

SHORT-TERM-DATE.STD:XX-XX-XX

MONTHLY-SALARY.MS:XXXXX ACCRUED-WAGES.AW:XXXXXX

Operator's Procedures for Transaction STIT

This transaction retrieves statistical information on inmate population showing: Institution-Name and Population-Count.

Parentheses around a word indicates that you should press appropriate key.

| <u>Field</u> | <u>Length</u> |
|-------------------------|----------------|
| Transaction Code "STIT" | 4 character(s) |

1. After readying the terminal for transmission of the transaction, enter the above information in consecutive positions. Then press the appropriate keys to complete the transaction.

Format: (BID) STIT(EOT)

Example: STIT

2. Terminal Response:

Computer displays present population distribution of all institutions.

| DATE - XXX(MON) XX(DAY) XXX(YEAR) | | | | | |
|-----------------------------------|-------|----------------|-------|----------------|-------|
| (INSTITUTION) | (POP) | (INSTITUTION) | (POP) | (INSTITUTION) | (POP) |
| XXXXXXXXXXXXXX | XXXXX | XXXXXXXXXXXXXX | XXXXX | XXXXXXXXXXXXXX | XXXXX |
| XXXXXXXXXXXXXX | XXXXX | XXXXXXXXXXXXXX | XXXXX | XXXXXXXXXXXXXX | XXXXX |
| XXXXXXXXXXXXXX | XXXXX | XXXXXXXXXXXXXX | XXXXX | XXXXXXXXXXXXXX | XXXXX |
| XXXXXXXXXXXXXX | XXXXX | XXXXXXXXXXXXXX | XXXXX | XXXXXXXXXXXXXX | XXXXX |
| XXXXXXXXXXXXXX | XXXXX | XXXXXXXXXXXXXX | XXXXX | XXXXXXXXXXXXXX | XXXXX |
| XXXXXXXXXXXXXX | XXXXX | XXXXXXXXXXXXXX | XXXXX | XXXXXXXXXXXXXX | XXXXX |
| XXXXXXXXXXXXXX | XXXXX | XXXXXXXXXXXXXX | XXXXX | XXXXXXXXXXXXXX | XXXXX |

Operator's Procedures for Transaction CMPL

This transaction retrieves all data fields of the Master record.

Parentheses around a word indicate that you should press appropriate key.

1. After readying the terminal for transmission of the transaction, enter the following information in consecutive positions. Then press the appropriate keys to complete the transaction.

| <u>Field</u> | <u>Length</u> |
|-------------------------|----------------|
| Transaction Code "CMPL" | 4 character(s) |
| Space () | 1 character |
| DCDC Number | 6 character(s) |

Format: (BID)CMPL(SPACE)DCDC# of inmate(EOT)

Example: CMPL 172374

2. Terminal Response:

Computer displays all remaining data fields in the master record. If 'No Record Found' is displayed, you entered incorrect DCDC#. Get correct DCDC# and key Step 1 again.

DCDC= NAME=
 TIMES-COMMITTED= DATE-COMMITTED= ALIAS-USED= WELFARE= MARITAL=
 DEPENDENTS= CHURCH= EDUCATION= OCCUPATION=
 HOURLY-WAGE= NATIVITY= DISABILITY= NARCOTICS1=
 ALCOHOL-ADDICT= DISABLE-TREATMENT= AMOUNT-SURRENDERED=
 INSTITUTION-FROM= TO SEE THE NEXT PAGE, DEPRESS THE ENTER KEY P/N

DCDC= NAME=
 SOC-SEC= DRIVERS-LICENSE= DRIVERS-STATE=
 PROGRAM PARTICIPATION IN INSTITUTION:
 EDUCATIONAL= VOCATIONAL= THERAPY= COUNSELING=
 MONTHS-IN-PROGRAM= NEW-SKILLS-ACQUIRED= MONTHLY-SALARY=
 ACCRUED-WAGES= TO SEE THE NEXT PAGE, DEPRESS THE ENTER KEY P/N

DCDC= NAME=
 NUMBER-OF-ESCAPES= LAST-ESCAPE-DATE= NUMBER-OF-ABSCONDS=
 LAST-ABSCOND-DATE= CONDUCT-LAST-12-MONTHS: JAN= FEB= MAR=
 APR= MAY= JUNE= JULY= AUG= SEPT= OCT= NOV= DEC=
 DAYS-OF-PAROLE-SUPERVISION=
 DEGREE-OF-SUPERVISION= TIMES-PAROLED= DATE-RELEASED-FROM-PAROLE=
 EMPLOY-ON-RELEASE= HOURLY-WAGE-ON-RELEASE= DATE-OF-LAST-INTERVIEW=
 TO SEE THE NEXT PAGE, DEPRESS THE ENTER KEY P/N

DCDC= NAME=
 HEARING DATA:
 PRELIMINARY: NEXT-ELIGIBLE-DATE= LAST-HEARING-DATE= DISPOSITION=
 CASE-NUMBER=
 INITIAL: NEXT-ELIGIBLE-DATE= LAST-HEARING-DATE= DISPOSITION=
 CASE-NUMBER=
 REHEARING: NEXT-ELIGIBLE-DATE= LAST-HEARING-DATE= DISPOSITION=
 CASE-NUMBER=
 VIOLATION: NEXT-ELIGIBLE-DATE= LAST-HEARING-DATE= DISPOSITION=
 CASE-NUMBER=
 CONTINUED: NEXT-ELIGIBLE-DATE= LAST-HEARING-DATE= DISPOSITION=
 CASE-NUMBER= LAST PAGE

Operator's Procedure for Transaction PDID

This transaction retrieves the following information from the Police ID Cross Reference File: DCDC#, Name, and Date-of-Birth. Used to obtain an inmate's DCDC# knowing his Police ID number.

Parentheses around a word indicate that you should press appropriate key.

1. After readying the terminal for transmission of the transaction, enter the following information in consecutive positions. Then press the appropriate keys to complete the transaction.

| <u>Field</u> | <u>Length</u> |
|-------------------------|----------------|
| Transaction Code "PDID" | 4 character(s) |
| Space () | 1 character |
| Police ID Number | 7 character(s) |

Format: (BID)PDID(SPACE)POLICE ID # of inmate(EOT)

Example: PDID 1512401

2. Terminal Response:

Computer displays pertinent data fields. If 'No Record Found' is displayed, you entered incorrect Police ID Number. Get correct Police ID Number and key Step 1 again.

DCDC#=XXXXXXX

NAME=XXXXXXXXXXXXXXXXXXXXXXX

DOB=XX-XX-XX

Operator's Procedures for Transaction TALK

This transaction gives you the ability to send messages to other system users.

Parentheses around a word indicate that you should press the appropriate key.

1. After readying the terminal for transmission of the message, enter the following information in consecutive positions. Then press the appropriate keys to complete the transaction.

| <u>Field</u> | <u>Length</u> |
|-------------------------|------------------|
| Transaction Code "TALK" | 4 character(s) |
| Field Separator (/) | 1 character |
| Terminal ID Number | 4 character(s) |
| Field Separator (/) | 1 character |
| Message Text | 100 Character(s) |

Format: (BID)TALK/TERMINAL ID/MESSAGE TEXT(EOT)

Example: TALK/C007/ANY MESSAGE GOES HERE

The length of the message is limited to 100 characters including spaces.

2. Terminal Response:

The message is transmitted to the addressed terminal.

YOUR MESSAGE HAS BEEN SENT TO XXXX-XXXXXXXXXX

TIME=XXXX DATE=XXXX

3. Message format at receiving terminal

MESSAGE FROM-XXXX-XXXXXXXXXXXXXXXXXXXX

TIME=XXXX DATE=XXXX

XXXXXXXXXXXXXXXXXXXXXXXXXXXXXXXXXXXX

PART VII. CODE TABLES AND DEFINITIONS

The following tables define the meaning of codes used in the batch and real time systems.

Whenever updating of records is to be effected using the real time system, the appropriate code(s) as defined in the tables should be used as input to the real time processing transactions.

TABLE B1
QUADRANT CODES

| | |
|----|-----------|
| NW | Northwest |
| NE | Northeast |
| SE | Southeast |
| SW | Southwest |

Field may be blank if not D. C.

TABLE B2
QUADRANT AND METRO CODES

| | |
|---|----------------------------------|
| 1 | N.W. |
| 2 | N.E. |
| 3 | S.E. |
| 4 | S.W. |
| 6 | Md. Streets at D. C. Line |
| A | Montgomery County, Maryland |
| B | Prince George's County, Maryland |
| C | City of Alexandria, Virginia |
| D | Arlington County, Virginia |
| E | City of Falls Church, Virginia |
| F | Fairfax County, Virginia |
| G | City of Fairfax, Virginia |
| H | Loudoun County, Virginia |
| I | Prince William County, Virginia |

TABLE B3
STATE TABLE

| | | | |
|----------------------|----|----------------|----|
| Alabama | AL | Massachusetts | MA |
| Alaska | AK | Michigan | MI |
| Arizona | AZ | Minnesota | MN |
| California | CA | Missouri | MO |
| Colorado | CO | Montana | MT |
| Connecticut | CT | Nebraska | NB |
| Delaware | DE | Nevada | NV |
| District of Columbia | DC | New Hampshire | NH |
| Florida | FL | New Jersey | NJ |
| Georgia | GA | New Mexico | NM |
| Guam | GU | New York | NY |
| Hawaii | HI | North Carolina | NC |
| Idaho | ID | North Dakota | ND |
| Illinois | IL | Ohio | OH |
| Indiana | IN | Oklahoma | OK |
| Iowa | IA | Oregon | OR |
| Kansas | KS | Pennsylvania | PA |
| Kentucky | KY | Puerto Rico | PR |
| Louisiana | LA | Rhode Island | RI |
| Maine | ME | South Carolina | SC |
| Maryland | MD | South Dakota | SD |

Table B2 (continued)

| | |
|-------------------|----|
| Tennessee | TN |
| Texas | TX |
| U.S. Parole Board | UP |
| Utah | UT |
| Vermont | VT |
| Virginia | VA |
| Virgin Islands | VI |
| Washington | WA |
| West Virginia | WV |
| Wisconsin | WI |
| Wyoming | WY |
| Canada | CN |
| Mexico | MX |
| Other Foreign | FN |
| Not Known | NN |

TABLE B4
RACE/SEX

| | |
|---|----------------|
| 1 | White Male |
| 2 | Colored Male |
| 3 | Other Male |
| 4 | White Female |
| 5 | Colored Female |
| 6 | Other Female |

TABLE B5
MARITAL STATUS TABLE

| | |
|---|-----------------|
| 0 | Single |
| 1 | Married |
| 2 | Common-law Wife |
| 3 | Divorced |
| 4 | Separated |
| 5 | Widowed |
| 6 | Unknown |

TABLE B6
CHURCH AFFILIATION TABLE

| | |
|---|------------|
| 0 | None |
| 1 | Protestant |
| 2 | Catholic |
| 3 | Jewish |
| 4 | Moslem |
| 5 | Other |
| 6 | Unknown |

TABLE B7
EDUCATION TABLE

| | |
|-------|----------------------------|
| 00 | None |
| 01-12 | Number of grades completed |
| 13 | 1 year of college |
| 14 | 2 years of college |
| 15 | 3 years of college |
| 16 | 4 years of college |
| 17 | graduate work |
| 99 | unknown |

TABLE B8
OCCUPATION

| | |
|----|-----------------------------------|
| 00 | Unemployed/Unknown |
| 01 | Professional/Technical/Managerial |
| 02 | Clerical/Sales |
| 03 | Service |
| 04 | Farming/Fishing/Forestry |
| 05 | Processing |
| 06 | Machine Trades |
| 07 | Bench Work |
| 08 | Structural Work |
| 09 | Miscellaneous |

TABLE B9
DISABILITIES
(Other than Narcotics or Alcohol)

| | |
|---|----------|
| 0 | None |
| 1 | Physical |
| 2 | Mental |
| 3 | Both |
| 4 | Unknown |

TABLE B10
NARCOTICS

| | |
|---|----------------|
| 0 | Non-User |
| 1 | User |
| 2 | Certified User |
| 3 | Other |
| 4 | Unknown |

TABLE B11
ALCOHOL HISTORY

| | |
|---|--------------|
| 0 | Non-User |
| 1 | Moderate Use |
| 2 | Frequent Use |
| 3 | Alcoholic |
| 4 | Unknown |

TABLE B12
OFFENSE CODES

0100 - HOMICIDE

0100 Homicide
0101 First Degree Murder
0102 Second Degree Murder (also Death result, abortion)
0103 Manslaughter
0131 Negligent homicide

0200 - RAPE

0200 Rape
0201 Carnal Knowledge (victim under 16 years)
0202 Attempt Rape (assault with intent to commit)
0203 Attempt Carnal Knowledge (assault with intent to commit)

0300 - ROBBERY

0300 Robbery (no weapon)
0301 Attempt Robbery
0310 Robbery (armed with any type of weapon)

0400 - AGGRAVATED ASSAULT

0400 Aggravated Assault (A.D.W.)
0401 Assault with intent to kill or mingling poison
0403 Mayhem
0404 Placing obstruction on railroad track
0410 Gun
0411 Knife
0412 Other Dangerous Weapon
0413 Hands, Feet, etc.

0500 - BURGLARY - HOUSEBREAKING

0501 First Degree Burglary
0502 Second Degree Burglary
0531 Attempt Housebreaking

Table B12 (continued)

0600 - LARCENY

0600 Grand Larceny - \$100 and Over
0601 Larceny from D.C. Govt. - \$100 and Over
0602 Larceny from U.S. Govt. - \$100 and Over
0603 Larceny from interstate shipment - \$100 and Over
0625 Larceny from D.C. Govt. - \$50 to \$99.99
0626 Larceny from D.C. Govt. - Under \$50
0627 Larceny from interstate shipment - \$50 to \$99.99
0628 Larceny from interstate shipment - Under \$50
0631 Petit Larceny - Under \$100
0632 Larceny from U.S. Govt. - Under \$100
0633 Attempt Grand Larceny
0634 All other attempts (except 0631)

0700 - AUTO THEFT

0700 Unauthorized use of Motor Vehicle
0701 Attempted UUV, Tampering

0800 - OTHER ASSAULTS

0822 Assault on a Police or Special Officer
0831 Simple Assault
0832 Attempt to impede or resist a Police Officer

0900 - ARSON

0900 Arson

1000 - FORGERY AND COUNTERFEITING

1001 Forgery or Uttering (Includes Attempts)
1002 Counterfeiting
1003 Possession of Counterfeit money or coins
1004 Possession of Counterfeit Postal Money Orders or Stamps
1005 Possession of Counterfeit Revenue Stamps, Labels, etc.

1100 - FRAUD

1105 Confidence Game (including penny matching)
Value \$100 and over (Grand Larceny by Trick)
1106 False Pretenses - Check Fraud - \$100 and Over

Table B12 (continued)

| | |
|------|---|
| 1107 | False Pretenses - Except Check - \$100 and Over |
| 1108 | Impersonating a Public Officer, Police Officer or Minister (attempting to perform duty or exercise authority) |
| 1109 | Impersonating a member of the Armed Forces |
| 1111 | Using Mails to Defraud |
| 1112 | False Certification of Acknowledgement |
| 1133 | Three Card Monte |
| 1135 | Confidence Game (including penny matching) Value under \$100 (Petit Larceny by Trick) |
| 1136 | False Pretenses - Check Fraud - Under \$100 |
| 1137 | False Pretenses - Except Check - Under \$100 |
| 1138 | False Weights and Measures |
| 1139 | False personation of a Police Officer (only with fraudulent design) |
| 1141 | Bad Check Law |
| 1149 | All Attempts |

1200 - EMBEZZLEMENT

| | |
|------|--|
| 1201 | Embezzlement - value \$100 and Over |
| 1202 | Embezzlement by Agent, etc. - value \$100 and Over |
| 1203 | Embezzlement from D.C. Government - any value |
| 1204 | Embezzlement from U.S. Government - any value |
| 1210 | Larceny after Trust - \$100 and Over |
| 1231 | Embezzlement - value Under \$100 |
| 1232 | Embezzlement by Agent, etc. - value under \$100 |
| 1240 | Larceny after Trust - Under \$100 |
| 1242 | Embezzlement - Slug in vending machine (includes attempts) |

1300 - STOLEN PROPERTY

| | |
|------|--|
| 1301 | Receiving stolen property \$100 and Over |
| 1302 | Destroying Stolen Property - \$100 and Over |
| 1303 | Bringing a stolen auto into D.C. over \$100 |
| 1331 | Receiving Stolen Property - Under \$100 |
| 1332 | Destroying Stolen Property - Under \$100 |
| 1333 | Bringing stolen property into D.C. under \$100 |

1400 - VANDALISM

| | |
|------|--|
| 1404 | Destroying Movable Property \$50 and Over (including attempts) |
| 1413 | Depredation of Fixtures in a House or Building |

Table B12 (continued)

| | |
|------|---|
| 1415 | Destroying Mail or Theft of Box |
| 1441 | Destroying or Defacing Private Property |
| 1442 | Destroying or Defacing Public Property |
| 1447 | Destroying Movable Property Under \$50 |
| 1486 | Throwing Missiles |
| 1488 | Tampering with Auto |

1500 - WEAPONS

| | |
|------|--|
| 1501 | Possession of Machine Gun, Sawed-off Shot Gun, Blackjack, Sling Shot, Switch Blade Knife, Metal Knuckles, Silencer (previous conviction of felony or this section) Possession (with intent to use unlawfully) an imitation Pistol, Dagger, Dirk, Razor, Stiletto, Knife with Blade longer than 3 inches or Other Dangerous Weapon (previous conviction of a felony or this section) |
| 1502 | Possession of Pistol by Certain Persons or Keeping for Same Persons (previous conviction of this section) |
| 1503 | Carrying openly or concealed a Pistol (previous conviction of felony or this section) |
| 1504 | Carrying openly or concealed a Dangerous or Deadly Weapon other than a Pistol (previous conviction of a felony or this section) |
| 1531 | Carrying Openly or concealed a Pistol (1st offense) |
| 1532 | Same as 1504 (1st offense) |
| 1533 | Possession of Firearm with Altered Numbers |
| 1534 | Same as 1502 (1st offense) |
| 1535 | Sale of Deadly Weapon to a Minor |
| 1536 | Unlawful Sale of Deadly Weapon |
| 1537 | Same as 1501 (1st offense) |

1600 - PROSTITUTION AND COMMERCIALIZED VICE

| | |
|------|--|
| 1601 | Pandering (includes attempts) |
| 1602 | Operating a House of Prostitution (sec. 22-2712) |
| 1603 | Procuring for a House of Prostitution |
| 1631 | Soliciting Prostitution |
| 1632 | Keeping a Disorderly House |
| 1633 | Soliciting for Lewd and Immoral Purposes |
| 1634 | Attempt Procuring |

Table B12 (continued)

1700 - SEX OFFENSES

| | |
|------|---|
| 1701 | Incest |
| 1703 | Sodomy |
| 1704 | Indecent Act, child under 16 years (22-3501)-includes attempts) |
| 1705 | Take, entice, persuade child, under 16 years for immoral purpose |
| 1731 | Adultery |
| 1732 | Seduction |
| 1733 | Indecent Exposure, Proposal, or Act |
| 1734 | Indecent Assault |
| 1735 | (Disorderly) Sex |
| 1736 | Indecent exposure, Proposal or Act - Presence of child under 16 years |
| 1737 | Fornication |

1800 - NARCOTIC DRUG LAWS

| | |
|------|--|
| 1801 | Forgery of Narcotic Presentation |
| 1802 | Violation of Harrison Narcotic Act |
| 1803 | Violation of Jones-Miller Act (Possession) |
| 1804 | Violation of Marijuana Tax Act |
| 1805 | D.C. Uniform Narcotic Drug Act (2nd Offense) |
| 1806 | Violation of Opium and Smoking Act |
| 1807 | Violation of Federal Food, Drug and Cosmetic Act (2nd Offense) (Durham Humphrey Act) |
| 1835 | D.C. Uniform Narcotic Act (1st Offense) |
| 1836 | Presence in Illegal Narcotic Establishment |
| 1837 | Violation of Federal Food, Drug and Cosmetic Act (1st Offense) (Durham Humphrey Act) |
| 1838 | Narcotic Vagrant |
| 1839 | Violation of Act Controlling Drugs Other than Narcotics |
| 1840 | All Attempts |

1900 - GAMBLING

| | |
|------|---|
| 1901 | Operating a Lottery, Sale and Possession |
| 1902 | Maintain, Aid or Permit Maintaining Gambling Premises (permitting Gaming) (2nd Offense) |
| 1903 | Setting up a Gaming Table |
| 1905 | Conspiracy to Violate Gaming Laws |
| 1906 | Interstate Transportation of Gambling Paraphernalia |
| 1907 | Failing to obtain Tax Stamp |

Table B12 (continued)

| | |
|------|--|
| 1931 | Possession of Lottery Slips |
| 1932 | Same as 1902 (1st Offense) |
| 1934 | Disorderly - Craps or Cards |
| 1935 | Making or Receiving Bet on Pool (Gaming Pools or Bookmaking) |
| 1936 | Presence in an illegal establishment |

2000 - OFFENSES AGAINST THE FAMILY AND CHILDREN

| | |
|------|--|
| 2031 | Cruelty to Children |
| 2032 | Contributing to the Delinquency of a Minor |
| 2033 | Destitute of a Suitable Home |
| 2034 | Incorrigibility |
| 2035 | Non-Support of a Bastard Child |
| 2036 | Non-Support of Wife and/or Minor Child |
| 2037 | Abandonment of Child |
| 2038 | Offense against self or others (sec. 4) |

2100 - DRIVING WHILE INTOXICATED2200 - LIQUOR LAWS

| | |
|------|--|
| 2201 | Illegal Manufacture of Intoxicating Liquor |
| 2202 | Failure to post bond for operating a still |
| 2203 | Make and fermenting mash fit for distillery in unauthorized premises |
| 2204 | Removal and concealing non-taxed paid whiskey |
| 2205 | Possession of untaxed liquor |
| 2206 | Improper Storage Unbonded Whiskey |
| 2207 | Unregistered Still |
| 2232 | Sale of untaxed liquor |
| 2233 | Transportation of untaxed liquor |
| 2234 | Selling liquor to minor |
| 2235 | Selling liquor without a license |
| 2236 | Keeping liquor for sale without a license |
| 2237 | Transportation of legal liquor without proper sales invoice |
| 2238 | Presence in Illegal A.B.C. Establishment |
| 2239 | Maintaining a Common Nuisance |
| 2240 | Other A.B.C. Violations |

2300 - DRUNKENNESS

| | |
|------|-----------------------|
| 2330 | Drunk in Public Space |
| 2331 | Drunk in House |

Table B12 (continued)

2400 - DISORDERLY CONDUCT

| | |
|------|---------------------------------|
| 2400 | Disorderly Conduct |
| 2431 | Affray |
| 2432 | Disorderly in House |
| 2433 | Unlawful Picketing |
| 2434 | Parading without a Permit |
| 2435 | Spitting on the Sidewalk |
| 2436 | Disturbing Religious Service |
| 2437 | Loitering |
| 2438 | Disorderly Picket |
| 2439 | Disorderly Failure to Move On |
| 2440 | Disorderly Incommoding Sidewalk |

2500 - VAGRANCY

| | |
|------|-----------------|
| 2530 | Vagrancy |
| 2531 | Soliciting Alms |

2600 - ALL OTHER OFFENSES (FELONIES)

| | |
|------|---|
| 2610 | Abortion, Attempted Abortion, Conspiracy |
| 2620 | Escape |
| 2630 | Bee Bee Regulations, Violation of (article 9 sec. 4B) |
| 2631 | Building Regulations |
| 2632 | Business License - except unlicensed rooming house |
| 2633 | Zoning Regulations |
| 2634 | Child Labor Laws |
| 2635 | Compulsory Education Law |
| 2636 | Disorderly Jostling |
| 2637 | Fire by Negligence |
| 2638 | Cruelty to Animals |
| 2639 | Discharging Firearms |
| 2640 | D.C. Unemployment Compensation Act |
| 2641 | |
| 2642 | |
| 2643 | Dog Control and Muzzle Regulations |
| 2644 | Drinking in Public |
| 2645 | D.C. Sales Tax Law, Violation of |
| 2646 | Electrical Code Regulations |
| 2647 | |
| 2648 | Failing to pay Board Bill |
| 2649 | False Alarm of Fire |

Table B12 (continued)

2400 - DISORDERLY CONDUCT

| | |
|------|---------------------------------|
| 2400 | Disorderly Conduct |
| 2431 | Affray |
| 2432 | Disorderly in House |
| 2433 | Unlawful Picketing |
| 2434 | Parading without a Permit |
| 2435 | Spitting on the Sidewalk |
| 2436 | Disturbing Religious Service |
| 2437 | Loitering |
| 2438 | Disorderly Picket |
| 2439 | Disorderly Failure to Move On |
| 2440 | Disorderly Incommoding Sidewalk |

2500 - VAGRANCY

| | |
|------|-----------------|
| 2530 | Vagrancy |
| 2531 | Soliciting Alms |

2600 - ALL OTHER OFFENSES (FELONIES)

| | |
|------|---|
| 2610 | Abortion, Attempted Abortion, Conspiracy |
| 2620 | Escape |
| 2630 | Bee Bee Regulations, Violation of (article 9 sec. 4B) |
| 2631 | Building Regulations |
| 2632 | Business License - except unlicensed rooming house |
| 2633 | Zoning Regulations |
| 2634 | Child Labor Laws |
| 2635 | Compulsory Education Law |
| 2636 | Disorderly Jostling |
| 2637 | Fire by Negligence |
| 2638 | Cruelty to Animals |
| 2639 | Discharging Firearms |
| 2640 | D.C. Unemployment Compensation Act |
| 2641 | |
| 2642 | |
| 2643 | Dog Control and Muzzle Regulations |
| 2644 | Drinking in Public |
| 2645 | D.C. Sales Tax Law, Violation of |
| 2646 | Electrical Code Regulations |
| 2647 | |
| 2648 | Failing to pay Board Bill |
| 2649 | False Alarm of Fire |

Table B12 (continued)

| | |
|------|--|
| 2650 | False Charge of Unchastity |
| 2651 | False Report to Police |
| 2652 | Fireworks, possession, sale and discharging |
| 2653 | Fire Regulations |
| 2654 | Fire - Kindling Bonfire |
| 2655 | Fishing and Game Laws |
| 2656 | Healing Arts & Practice Act, Violation of |
| 2657 | |
| 2658 | Harbor Regulations |
| 2659 | Harboring a Fugitive |
| 2660 | Health Regulations |
| 2661 | Possession Weapon prohibited to Minot (Art. 9 Sec. 2) |
| 2662 | Indecent Performance and Permitting |
| 2663 | Conditional Sales, Violation of |
| 2664 | Massaging Person of Opposite Sex |
| 2665 | Mental Observation |
| 2666 | Sniffing Glue |
| 2667 | |
| 2668 | No Occupancy Permit |
| 2669 | Other Misdemeanors |
| 2670 | Pharmacy Laws |
| 2671 | Playing Ball in Street |
| 2672 | Plumbing Regulations |
| 2673 | Possession of Implements of Crime (1st Offense) |
| 2674 | Possession, sale or exhibiting of Lewd or Obscene Literature, Pictures, etc. |
| 2675 | Prisoners - Misprisions by Officer |
| 2676 | |
| 2677 | Violation of Railroad Retirement Act |
| 2678 | |
| 2679 | Riot or Inciting to Riot |
| 2680 | Second-hand Dealer's Regulations |
| 2681 | Selling Tobacco to Minors |
| 2682 | Smoke Laws |
| 2683 | Trash, Violation of (Police Regulations) |
| 2684 | Taking Property without Right |
| 2685 | Threats or Threats in a Menacing Manner |
| 2686 | |
| 2687 | Trepassing on Railroad Property |
| 2689 | Industrial Safety Standards, Violation of |
| 2690 | Unlawful Entry (includes attempts) |

Table B12 (continued)

| | |
|------|---|
| 2691 | Unlawful Possession, Sale or Use of Explosives, Transportation of |
| 2692 | Unlicensed Entertainment |
| 2693 | Unlicensed Rooming House |
| 2694 | Violation of U.S. Park Regulations |
| 2695 | Wage-Hour Law |
| 2696 | Workmen's Compensation Law |
| 2697 | Cigarette Tax Act |

2700 - SUSPICION

| | |
|------|------------------------------------|
| 2731 | Investigation |
| 2732 | Held for Coroner |
| 2733 | Attachment (or bench warrant) |
| 2734 | Condition of Parole |
| 2735 | Condition of Probation |
| 2736 | Held in Transit |
| 2737 | Immigration Authorities |
| 2738 | U.S. Department of Justice |
| 2739 | Juvenile Court |
| 2740 | Military Authorities |
| 2741 | U.S. Marshal |
| 2742 | U.S. Secret Service |
| 2743 | Fugitive from Justice |
| 2744 | Fugitive from Board Public Welfare |
| 2745 | Held as U.S. Witness |
| 2746 | Fugitive from Parents |
| 2747 | Fugitive from Mental Hospital |
| 2748 | Held for Postal Authorities |

3300 - VIOLATION OF ROAD AND DRIVING LAWS

| | |
|------|----------------------------|
| 7799 | Felony - not reported |
| 8800 | All Other Misdemeanors |
| 8801 | Misdemeanor Escape |
| 8899 | Misdemeanor - not reported |
| 9900 | Unknown or not indicated |

TABLE B13

COURT

- 0 Other
- 1 Commissioner
- 2 Grand Jury
- 3 Superior Court
- 4 Appeals Court of Superior
- 5 U. S. District Court for D. C.
- 6 Appeals Court of U. S. District Court
- 7 Out of States Courts

TABLE B14

CHARGE STATUS AND DISPOSITIONS

- 0
- 1 Sentenced and serving sentence.
- 2 Sentenced and awaiting appeal.
- 3 Not sentenced, and awaiting court action. This code will always be used for a new charge -- not one for which the inmate has already received a sentence. It would include all inmates confined on a preliminary commitment pending further hearing action.
- 4 Federal Youth Correctional Act cases sentenced under Section 5010 (b) of the FYCA are to be placed in this class if they have no other case pending. Inmates sentenced under the observation provision of the FYCA are not included and should be coded under Code J.
- 5 Parole violator who has been confined on a Parole Violators Warrant issued by the Board of Parole. Parole may also have been revoked or a violation hearing may be pending. This group does not include inmates confined on a detainer from the Parole Board of another state (they are coded under 9).
- 6 Pauper's Oath (Indigent Prisoners Act).
- 7 Purged.
- 8 Federal Youth Correctional Act cases sentenced under Section 5010 (c) of the FYCA are to be placed in this class if they have no other case pending. Inmates sentenced under the observation provision of the FYCA are not included and should be coded under Code J.
- 9 All other commitments including marshal holds, material witnesses, inmates awaiting deportation hearing, inmates given minority sentence under the Federal Juvenile Delinquency Act; but only if confined for felony offenses; plus any others not coded above.
- A Found not guilty case dismissed.
- B Nolle Prosequi, ignored by the Grand Jury or dismissed by the U. S. Attorney.

- C Sentence modified, balance of sentence suspended.
- D Case bound over for Grand Jury of U. S. District Court.
- E Bond Release (money).
- F Bond Release (personal).
- G Dismissed for want of prosecution.
- H Imposition sentence suspended.
- I Appeal Bond.
- J 5010E unsentenced (90 day observation).

WORK RELEASE REFERRAL CODES

- K Court ordered misdemeanor. (C/M)
- L Parole Bond-Misdemeanant-Felon-Youth Corrections Act. (PB/M-F-Y)
- M Lorton Complex-Misdemeanant-Felon-Youth Corrections Act. (LC/M-F-Y)
- N Minimum Security-Misdemeanant-Felon-Youth Corrections Act. (MSF/M-F-Y)
- O Youth Center-Misdemeanant-Felon-Youth Correction Act. (YC/M-F-Y)
- P Probation and suspended sentence on personal recognizance.
- Q Jail-Misdemeanant-Felon-Youth Correction Act. (J/M-F-Y)
- R Bail Bond-Misdemeanant-Felon-Youth Corrections Act.
- S Paid fine - When the sentence provided the alternative of serving time or paying a fine, the sentenced man paid the fine.
- T Execution (by law).
- U Death (other than execution).
- Y 5010D - adult sentence.

Revised: February 9, 1971

TABLE B15
PENDING ACTION

- 0 None
- 1 Commissioner
- 2 Grand Jury
- 3 Superior Court
- 4 Appeals Court, Superior Court
- 5 U. S. District Court for D. C.
- 6 Appeals Court of U. S. District Court
- 7 Awaiting Arraignment
- 8 Parole Board Hearing
- 9 Unknown

TABLE B16

FINES

| | |
|-----|-------------------|
| xxx | No Fine Indicated |
| 000 | 10 Dollars |
| 001 | 100 Dollars |
| 010 | 1000 Dollars |
| 100 | 10,000 Dollars |

TABLE B17

BOND

| | |
|-----|----------------|
| xxx | No Bond |
| 000 | 10 Dollars |
| 001 | 100 Dollars |
| 010 | 1000 Dollars |
| 100 | 10,000 Dollars |
| P | Purged |

TABLE B18

JUDGES

SUPERIOR COURT ONLY

| | |
|-------------------------|-----------------------|
| 002 Kronheim, M. S. | 026 Pryor, W. C. |
| 003 Barlow, M. C. | 027 Belson, J. A. |
| 004 Scalley, T. C. | 028 Green, J. H. |
| 005 Malloy, J. J. | 029 Weston, R. M. |
| 006 | 030 Sorrell, W. B. |
| 007 Beard, E. A. | 031 Goodrich, G. H. |
| 008 | 032 Thompson, W. S. |
| 009 Hyde, D. S. | 033 Revercomb, G. H. |
| 010 | 034 Washington, J. A. |
| 011 Ryan, J. M. F., Jr. | 035 Doyle, J. F. |
| 012 | 036 Faunteroy, J. D. |
| 013 | 037 Ketcham, O. W. |
| 014 Daly, E. T. | 038 McArdle, P. F. |
| 015 Green, H. | 039 Stewart, W. E. |
| 016 Halleck, C. W. | 040 Taylor, D. J. |
| 017 Neilson, G. D. | 041 Braman, L. |
| 018 Alexander, H. T. | 042 Harris, S. S. |
| 019 Murphy, T. | 043 Nunzio, N. S. |
| 020 | 044 Bacon, S. |
| 021 McIntyre, F. L. | 045 Penn, J. G. |
| 022 Korman, M. D. | 046 Johnson, N. H. |
| 023 Atkinson, R. R. | 047 Hamilton, E. N. |
| 024 | 048 Newman, T. R. |
| 025 Burka, A. | 049 |

TABLE B18 (Continued)

JUDGES

DISTRICT OF COLUMBIA COURTS

| | |
|------------------------|-------------------------------------|
| 002 Kronheim | 022 Korman |
| 003 Barlow | 023 Atkinson |
| 004 Scalley, Thomas C. | 024 Ryan |
| 005 Malloy | 025 Burka |
| 006 Howard | 026 Pryor |
| 007 Beard | 027 Belson |
| 008 Fickling | 035 Miller, Morris |
| 009 Hyde | 036 Faunteroy, John D. |
| 010 Kelly | 037 Ketcham, Orman W. |
| 011 Ryan | <u>UNITED STATES DISTRICT COURT</u> |
| 012 Waddey | 051 Bryant, William B. |
| 014 Daly | 052 Corcoran, Howard F. |
| 015 Greene, Harold | 053 Curran, Edward M. |
| 016 Halleck | 054 Gasch, Oliver |
| 017 Neilson | 055 Gesell, Gerhard |
| 018 Alexander | 056 Green, June |
| 019 Murphy | 057 Hart, George L., Jr. |
| 020 Edgerton | 058 Holtzoff, Alexander |
| 021 McIntyre | 059 Jackson, Joseph R. |

| | |
|-------------------------------|-------------------------------------|
| 060 Jones, William B. | 079 Dwyer |
| 061 Keech, Richmond B. | 080 Letts |
| 062 Mathews, Burnita Shelton | 081 Bailey |
| 063 McGarraghy, Joseph C. | 082 Scott |
| 064 McGuire, Mathew F. | 083 Bowman |
| 065 McLaughlin, Charles R. | 084 Galdsborough |
| 066 Pine, David | 099 U. S. Commissioner Sam Wertlieb |
| 067 Pratt, John L. | |
| 068 Robinson, Aubrey, E., Jr. | |
| 069 Schweinhaut, Henry A. | |
| 070 Sirica, John | |
| 071 Smith, John Lewis, Jr. | |
| 072 Waddy, Joseph C. | |
| 073 Walsh, Leonard P. | |
| 074 Youngdahl, Luther | |
| 075 Tamm | |
| 076 Kirkland | |
| 077 Wright | |
| 078 Laws | |

TABLE B19
INMATE LOCATIONS

| | |
|----|---|
| 00 | Unknown Community Program. |
| 01 | (Jail) D. C. Jail, 200 - 19th Street, S. E. |
| 02 | (Comp) Lorton Correctional Complex, P. O. Box 25, Lorton, Virginia 22079. |
| 03 | (YC) Lorton Youth Center, P. O. Box 25YC, Lorton, Virginia 22079 |
| 04 | (WDC) Women's Detention Center, 1010 N. Capitol Street. |
| 05 | |
| 06 | (SR-1) Shaw Residence #1, 1770 Park Road, N. W. |
| 07 | Jurisdiction of the Court |
| 08 | (MinSecFac) Minimum Security Facility, Occoquan, Virginia. |
| 09 | (RTC) Residential Treatment Center, 519 C Street, N. E. |
| 10 | (CTCY) Com. Treatment Center for Youth, 1825 - 13th Street, N. W. |
| 11 | (SR-2) Shaw Residence #2, 1740-42 Park Road, N. W. |
| 20 | Other Federal Institutions - Unknown. |
| 21 | Saint Elizabeths Hospital |
| 22 | Federal Facility - Ashland, Kentucky |
| 23 | Federal Facility - Alderson, West Virginia |
| 24 | Federal Facility - Atlanta, Georgia |
| 25 | Federal Facility - Chillicothe, Ohio |
| 26 | Federal Facility - Danbury, Connecticut |
| 27 | Federal Facility - Leavenworth, Kansas |
| 28 | Federal Facility - Lexington, Kentucky |
| 29 | Federal Facility - Lewisburg, Pennsylvania |
| 30 | Federal Facility - Milan, Michigan |
| 31 | Federal Facility - Marion, Illinois |

32 Federal Facility - McNeil Island, Washington
 33 Federal Facility - Petersburg, Virginia
 34 Federal Facility - Springfield
 35 Federal Facility - Texarkana, Texas
 36
 37 (EFEC) Efforts for Ex-Convicts, 701 Maryland Avenue, N. E.
 38 (PIF) Psychiatric Institute Foundation, 1343-45 Euclid Street,
 N. W.
 39
 40 (CCC-I) Community Correctional Center #1, 1841 - 16th Street, N. W.
 41 (NARC) Narcotic Treatment Program and Center, 456 C Street, N. W.
 42 (SR-3) Shaw Residence #3, 2019 - 19th Street, N. W.
 43 (CCC-4) Community Correctional Center #4, 527 - 50th Place, N. E.
 44 (CCC-5) Community Correctional Center #5, 1817 - 13th Street,
 N. W.
 45 (YCCP) Youth Crime Control Project, 1719 - 13th Street, N. W.
 46 (WHHW) Washington Halfway Home for Women, Inc., 1816 - 19th
 Street, N. W.
 47 (WCWR) Women's Center Work Release, 1010 N. Capitol Street
 48 (SERD) Social Educational Research and Development, Inc. 406
 Condon Terr., S. E.
 49
 50 (APRL) Adult Parole, Room 911, 614 H Street, N. W.
 51 (YPRL) Youth Parole, Room 1006, 614 H Street, N. W.
 52 Escape
 53 Abscond
 54 Unescorted furlough (less than 24 hours), institutions only.
 55 Unescorted furlough (over 24 hours), institutions only.
 99 Bonabond

COMMUNITY CORRECTIONAL CENTERS

| | | | |
|---------------------------------|--|--------------------------|--|
| CCC #1 | Mr. Marion Robertson Administrator Assistant Administrator 1841 - 16th Street, N.W. 629-5417, 5418, 5419, 5483 | NARC | Mr. William Chisholm Administrator Mr. Clarence Morton Assistant Administrator 456 C Street, N.W. 629-3883, 3884 |
| CCC #4 | Mr. Charles Lindsay Administrator Assistant Administrator 527 - 50th Place, N.E. 397-4500 | SHAW #1 | Mr. Albert (Cil) Brown Director Assistant Director 1770 Park Road, N.W. 667-2444, 8590 |
| CCC #5 | Mr. Frank Riddick Acting Administrator Assistant Administrator 1817-13th Street, N.W. 462-8475, 8476, 8477 | SHAW #2 | Mr. Decatur Trotter. Director Mr. James Lock Assistant Director 1740-42 Park Road, N.W. 667-6599, 6561 |
| <u>YOUTH SERVICES:</u> | | SHAW #3 | Mr. Larry Kreis Director Mr. Dennis Flanders Assistant Director 2019-19th Street, N.W. 387-5555, 6666 |
| YTCY | Mr. Salanda Whitfield Administrator 1825-18th Street, N.W. 332-5575, 5576, 5577 | | |
| YCCP | Mr. Ashley Corley Administrator 1719-13th Street, N.W. 462-7805, 2270 | RES. TREAT. CENTER | Mr. Marion Strickland Director Mr. Lloyd Fennell Assistant Director 519 C Street, N.E. 546-7702, 7703 |
| <u>HALFWAY HOUSE FOR WOMEN:</u> | | | |
| WHHW | Mrs. Doris Whitney Executive Director Washington Halfway Home for Women, Inc. 1816-19th Street, N.W. 462-8773, 8982, 8983 | Euclid House | Mr. Morgan Jones Clinical Administrator Mr. Samuel Washington Management Administrator 1343-45 Euclid Street, N.W. 462-6787, 6788 |
| WDC-WR | Mrs. Margie Williams Administrator Women's Detention Center Work Release Center 1010 N. Capitol Street, N.W. 629-5235 | EFEC Center | Mr. Rudolph Yates Administrator Mr. Isaac Hill Assistant Administrator 701 Maryland Avenue, N.E. 544-7200, 7201, 7202, 7203 |

TABLE B-19a
 INMATE LOCATIONS
 INITIALS USED

| <u>CODE</u> | <u>NAME</u> |
|-------------|---|
| UNCP | Unknown Community Program |
| JAIL | D. C. Jail |
| COMP | Lorton Complex |
| YCTR | Lorton, Youth Center |
| WDC | Womens' Detention Center |
| SR-1 | Shaw Residence #1 |
| JOTC | Jurisdiction of the Court |
| MSEC | Minimum Security Facility |
| RTC | Residential Treatment Center |
| CTCY | Community Treatment Center for Youth |
| SR-2 | Shaw Residence #2 |
| OFED | Other Federal Institutions-Unknown |
| STEL | St. Elizabeth |
| ASKY | Ashland, Kentucky |
| ALWV | Alderson, West Virginia |
| ATGA | Atlanta, Georgia |
| CHOH | Chillicothe, Ohio |
| DACT | Danburg, Connecticut |
| LEKS | Leavenworth, Kansas |
| LEKY | Lexington, Kentucky |
| LEPA | Lewisburg, Virginia |
| MLMI | Milan, Michigan |
| MAIL | Marion, Illinois |
| MIWA | McNeil Island, Washington |
| PBVA | Petersburg, Virginia |
| SPFD | Springfield |
| TXTX | Texarkana, Texas |
| EFEC | Efforts from Ex-Convicts |
| PIF | Psychiatric Institute Foundation (Euclid House) |
| CCC1 | Community Correctional Center #1 |
| NARC | Narcotic Treatment Program |
| SR-3 | Shaw Residence #3 |
| CCC4 | Community Correctional Center #4 |
| CCC5 | Community Correctional Center #5 |
| YCCP | Youth Crime Control Project |
| APRL | Adult Parole |
| YPRL | Youth Parole |
| ESCP | Escape |
| ABSC | Abscord |
| FU24 | Furlough (less than 24 hours) |
| FU25 | Furlough (over 24 hours) |
| BONA | Bonabond |
| WHHW | Washington Halfway Home for Women, Inc. |

CONTINUED

1 OF 2

TABLE B-19a
INMATE LOCATIONS
INITIALS USED

| <u>CODE</u> | <u>NAME</u> |
|-------------|---|
| UNCP | Unknown Community Program |
| JAIL | D. C. Jail |
| COMP | Lorton Complex |
| YCTR | Lorton, Youth Center |
| WDC | Womens' Detention Center |
| SR-1 | Shaw Residence #1 |
| JOTC | Jurisdiction of the Court |
| MSEC | Minimum Security Facility |
| RTC | Residential Treatment Center |
| CTCY | Community Treatment Center for Youth |
| SR-2 | Shaw Residence #2 |
| OFED | Other Federal Institutions-Unknown |
| STEL | St. Elizabeth |
| ASKY | Ashland, Kentucky |
| ALWV | Alderson, West Virginia |
| ATGA | Atlanta, Georgia |
| CHOH | Chillicothe, Ohio |
| DACT | Danburg, Connecticut |
| LEKS | Leavenworth, Kansas |
| LEKY | Lexington, Kentucky |
| LEPA | Lewisburg, Virginia |
| MLMI | Milan, Michigan |
| MAIL | Marion, Illinois |
| MIWA | McNeil Island, Washington |
| PBVA | Petersburg, Virginia |
| SPFD | Springfield |
| TXTX | Texarkana, Texas |
| EFEC | Efforts from Ex-Convicts |
| PIF | Psychiatric Institute Foundation (Euclid House) |
| CCC1 | Community Correctional Center #1 |
| NARC | Narcotic Treatment Program |
| SR-3 | Shaw Residence #3 |
| CCC4 | Community Correctional Center #4 |
| CCC5 | Community Correctional Center #5 |
| YCCP | Youth Crime Control Project |
| APRL | Adult Parole |
| YPRL | Youth Parole |
| ESCP | Escape |
| ABSC | Abscond |
| FU24 | Furlough (less than 24 hours) |
| FU25 | Furlough (over 24 hours) |
| BONA | Bonabond |
| WHHW | Washington Halfway Home for Women, Inc. |

TABLE B20
MOVEMENT

| | |
|----|---|
| 02 | Expiration (to be used when a man completes his sentence and had no further obligation). |
| 04 | Mandatory Release |
| 09 | Administrative Work Release |
| 10 | Court Order Work Release |
| 16 | Extradited to Another Jurisdiction. |
| 17 | Sent to another jurisdiction Federal Prison to be used when a man is sent to another jurisdiction to serve time when he either is not sentenced here or does not complete a sentence here. Sent to immigration authorities. |
| 18 | Release to U. S. Marshal - reason not given. |
| 24 | Sentence Modified - balance of sentence suspended by Court. |
| 25 | Credit given for time in jail; this code will be used infrequently. To be used when a man spends so much time awaiting trial that, although he is found guilty, he is released from court. |
| 26 | Court Order (R.C.A.) |
| 27 | Released at Court - other (i.e., acquitted by reason of insanity). |
| 28 | Released at Court - reason not given. |
| 29 | Death other than execution. |
| 32 | Death |
| 33 | Other Release |
| 35 | Special (this code will force the active record to the inactive file). |
| 36 | Special (this code will make the inactive record on the Master Subfile active again). |
| 60 | For a court appearance |
| 61 | For medical reasons |

- 62 For a psychological examination
- 63 For an Attorney interview
- 64 For a parole hearing
- 65 To serve sentence
- 66 For security reasons
- 67 For administrative reasons
- 70 Missing from Department of Corrections
- 71 Granted parole or returned to parole
- 72 To resume sentence
- 80 Had previously absconded
- 81 Had previously escaped

Revised: February 9, 1971

TABLE B21
PROGRAM PARTICIPATION

- 0 Not assigned
- 1 Approved but not yet assigned
- 2 New man - not evaluated
- 3 Excellent
- 4 Good
- 5 Satisfactory
- 6 Poor
- 7 Unsatisfactory

TABLE B22
CONDUCT RECORD

| | |
|---|----------------|
| 0 | Not reported |
| 1 | Excellent |
| 2 | Good |
| 3 | Satisfactory |
| 4 | Unsatisfactory |
| 5 | Poor, problem |

TABLE B23
WARRANT DISPOSITION/VIOLATION/DETAINER REVIEW

| | |
|-------|-----------------------|
| Blank | None issued |
| 0 | Withdraw Warrant |
| 1 | Revoked |
| 2 | Reinstated |
| 3 | Continued - Counsel |
| 4 | Continued - Witness |
| 5 | Continued - Other |
| 6 | Remains as a detainer |
| 7 | Withdraw detainer |
| 8 | Executive detainer |

TABLE B24

DEGREE OF PAROLE SUPERVISION

| | |
|---|--|
| 0 | Not classified |
| 1 | Minimum |
| 2 | Medium |
| 3 | Maximum |
| 4 | Incarcerated |
| 5 | Inactive Supervision (Conditional Release) |
| 6 | Inactive Supervision (Warrant Issued) |

TABLE B25

INITIAL HEARING, REHEARING, VIOLATION HEARING, LAST
CONTINUED HEARING - OR RECONSIDERATION DISPOSITIONS

| | |
|---|--------------------------------------|
| 0 | Future Date |
| 1 | Granted |
| 2 | Denied |
| 3 | Continued |
| 4 | Rescind previous grant. |
| 5 | Rescind grant to future date |
| 6 | Grant reaffirmed |
| 7 | Inmate declines hearing |
| 8 | Paroled to Detainer or Another State |
| 9 | Paroled to a Community Program |

TABLE B28

LOCATION

| | |
|-----------|----------------------------|
| 5 | House number ends with 1/2 |
| R | Rear apartment |
| A,B,C,... | Apartment letter |

TABLE B29

D. C. DEPARTMENT OF CORRECTIONS

PAROLE OFFICER CODING

| <u>CODE</u> | <u>OFFICER</u> | <u>ADULT PAROLE AREA</u> |
|-------------|--------------------|--------------------------|
| 00 | Julius F. Martin** | - |
| 01 | Kenneth Coleman | 3 |
| 02 | Wade Brown* | 1 |
| 03 | | |
| 04 | Alfred Zimmerman* | 2 |
| 05 | James Newman | 3 |
| 06 | Charles Carrington | 1 |
| 07 | | |
| 08 | Thomas Friend | 3 |
| 09 | | |
| 10 | Samuel Cooper | 2 |
| 11 | Charles Poindexter | 2 |
| 12 | George Williams | 3 |
| 13 | Jefferson Melvin | 3 |
| 14 | Stephen Roberts | 1 |
| 15 | Francis Schancks | 1 |
| 16 | Albert McNeill | 1 |
| 17 | Ryland Simmons | 1 |
| 18 | John Stokas | 2 |
| 19 | | |
| 20 | Eugene Tucker | 2 |

| <u>CODE</u> | <u>OFFICER</u> | <u>ADULT PAROLE AREA</u> |
|-------------|------------------------|--------------------------|
| 21 | Otis Troupe | 2 |
| 22 | Margie Williams (Mrs.) | 2 |
| 23 | Frank Wilson | 2 |
| 24 | Howard Wood* | 3 |
| 25 | Timothy Abron | 1 |
| 26 | | |
| 27 | Daniel Spicer | 3 |
| 28 | | |
| 29 | | |
| 30 | | |
| 31 | | |
| 32 | | |
| 33 | | |
| 34 | | |
| 35 | | |
| 36 | | |
| 37 | Bonabond | Zimmerman* |
| 38 | | |
| 39 | | |
| 40 | | |
| 41-49 | | |
| 50 | James Porter* | YOUTH PAROLE |
| 51 | Kent Boutilier | YOUTH PAROLE |
| 52 | George Deford | YOUTH PAROLE |

| <u>CODE</u> | <u>OFFICER</u> | |
|-------------|--|--------------|
| 53 | Howard Dennison | YOUTH PAROLE |
| 54 | Edward Faison | YOUTH PAROLE |
| 55 | Willie Spruiell | YOUTH PAROLE |
| 56 | Benny Hodges | YOUTH PAROLE |
| 57 | Jacob Johnson | YOUTH PAROLE |
| 58 | Paul Kelner | YOUTH PAROLE |
| 59 | Dave Mason | YOUTH PAROLE |
| 60 | Frank Phillips | YOUTH PAROLE |
| 61 | Ralph Reynard | YOUTH PAROLE |
| 62 | Donald Soskin* | YOUTH PAROLE |
| 63 | Maxwell Stokes | YOUTH PAROLE |
| 64 | Cleveland Blunt | YOUTH PAROLE |
| 65 | Barry Zipkoff | YOUTH PAROLE |
| 66 | Barbara Ridley (Mrs.) | YOUTH PAROLE |
| 67 | Bryant Smith | YOUTH PAROLE |
| 68 | Mary Abraham (Mrs.) | YOUTH PAROLE |
| 98 | Inactive Supervision (MPD Report Only) | |

** Chief
* Supervisor

TABLE B30

REHABILITATION PROGRAMS

01 Adult Education and Community Schools
 02 Adult Outpatient Services Georgetown University Hospital
 03 Adult Program of the Twelfth Street Young Men's Christian Association
 04 Adventist Welfare
 05 Alcoholic Rehabilitation Clinic, Area B Community Health Center, D. C. Department of Public Health
 06 Big Brothers of the National Capital Area, Inc.
 07 Bonabond, Inc.
 08 Boys' Clubs of Greater Washington
 09 Boys Scouts of America
 10 Bureau of Alcoholic Studies and Rehabilitation
 11 Bureau of Rehabilitation of the National Capital Area
 12 Calvary Baptist Church
 13 Catholic Charities of the Archdiocese of Washington, D. C.
 14 CHANGE, Inc.
 15 Child Psychiatry Service
 16 Christ Child Settlement House-Camp
 17 Commission on Christian Social Concerns
 18 Community Psychiatric Clinic, Inc.
 19 Department of Vocational Rehabilitation
 20 D. C. Apprenticeship Council
 21 District of Columbia Institute of Mental Hygiene

22 Drug Addiction Treatment and Rehabilitation Center
 23 Drug Rehabilitation Program
 24 Employment Counseling Service
 25 Fairmicco, Inc.
 26 Family and Child Services of Washington, D. C.
 27 Far East Community Services, Inc.
 28 Friends of the Juvenile Court
 29 Girl Scouting
 30 Gospel Mission
 31 Health Information and Referral Center, D. C. Department of Public Health
 32 Home for Unwed Mothers (Florence Crittenton Home)
 33 Information and Referral Service of the Health and Welfare Council, National Capital Area
 34 Interracial Council for Business Opportunity of Greater Washington
 35 Job Corps, United Planning Organization
 36 Juvenile Delinquency Prevention Program
 37 Legal Aid Society of the District of Columbia
 38 MA-1, D. C. Manpower Administration
 39 Maryland State Employment Service, Department of Employment Security
 40 Mental Health Study Center National Institute of Mental Health
 41 Mental Retardation Program, D. C. Department of Public Health
 42 Municipal Lodging Houses, D. C. Department of Public Welfare

- 43 Near Northeast Community Improvement Corporation
- 44 Neighborhood Development Center of the Washington Urban League
- 45 Neighborhood Development Youth Program
- 46 Night Neighborhood Service Center
- 47 Occupational Training Center, Help for Retarded Children, Inc.
- 48 Offender Rehabilitation Project of the Legal Aid Agency for the District of Columbia
- 49 On-the-Job Training, Washington Urban League
- 50 Opportunities Industrialization Center
- 51 Police-Community Relations, Peoples Involvement Corporation
- 52 Prince George's County Mental Health Bureau and Community Psychiatric Center #1
- 53 Project Build
- 54 Project Crossroads, National Committee for Children and Youth
- 55 Psychiatry Service, Veterans' Administration Hospital
- 56 Public Housing, National Capital Housing Authority
- 57 Residential Treatment Program for Drug Dependent Persons, Bureau of Rehabilitation
- 58 Revoing Leader Program, D. C. Department of Recreation
- 59 St. John's Child Development Center
- 60 Salvation Army Correctional Services Bureau
- 61 Salvation Army Men's Social Service Center
- 62 Service Employee's International Union Custodial Training Project
- 63 Shaw Residence, Bureau of Rehabilitation of the National Capital Area
- 64 Sheltered Workshop - Rehabilitation Center, Davis Memorial Goodwill Industries
- 65 Social Hygiene Society of Metropolitan Washington

- 66 Southwest House Neighborhood Development Program
- 67 Suicide Prevention Service, Emergency Mental Health Consultation, D. C. Department of Public Health
- 68 The Pastoral Counseling and Consultation Centers of Greater Washington
- 69 The Pastoral Institute
- 70 Travelers Aid Society of Washington, D. C., Inc.
- 71 United Communities Against Poverty, Inc.
- 72. U. S. Employment Service for the District of Columbia
- 73 U. S. Public Health Service Outpatient Clinic
- 74 Veterans Affairs of the Washington Urban League
- 75 Washington Area Council on Alcoholism, Inc.
- 76 Washington Job Center
- 77 Work Incentive Program
- 78 Youth Group Homes

TABLE B31
EYE COLOR CODES

| | |
|----|-------|
| GR | Green |
| BL | Blue |
| BR | Brown |
| BK | Black |
| HZ | Hazel |
| MX | Mixed |

TABLE B32
HAIR COLOR CODES

| | |
|----|------------------------|
| 00 | Bald |
| BK | Black |
| BN | Blonde |
| BR | Brown |
| GY | Gray or partially gray |
| RD | Red or Auburn |
| SN | Sandy |
| WH | White |

END