



A Statistical Analysis Center Special Report

# Rape in Arkansas 1977

AUGUST 1978

Criminal Justice & Highway Safety Information Center

61314



A Statistical Analysis Center Special Report

✓  
**RAPE IN ARKANSAS**  
**1977**

August 1978

STATE OF ARKANSAS  
CRIMINAL JUSTICE & HIGHWAY SAFETY  
INFORMATION CENTER  
Box 7445  
Little Rock, Arkansas 72217

**NCJRS**

**AUG 20 1979**

**ACQUISITIONS**

## PREFACE

The definition of rape (Arkansas Criminal Code; §41-1803; pages 129—130; effective January, 1976) is:

*A person commits rape if he engages in sexual intercourse or deviate sexual activity with another person:*

- (a) by forcible compulsion; or*
- (b) who is incapable of consent because he is physically helpless; or*
- (c) who is less than eleven (11) years old.*

The definition of forcible rape in the Uniform Crime Reporting (UCR) Program is:

*Forcible rape is the carnal knowledge of a female through the use of force or the threat of force. Assaults to commit forcible rape are also included; however, statutory rape (without force) is not counted in this category.*

There is a wide disparity between these two definitions. The original intent of this project was to parallel the Uniform Crime Reporting of forcible rape in Arkansas with a Supplementary Rape Report. In the collection of these data, it was discovered that some rapes had been reported to the UCR Program in accordance with State Statute, rather than by the UCR definition.

This Rape Report for 1977 includes all data collected, with the cooperation of law enforcement agencies from their offense reports, utilizing the UCR statistics reported to the Criminal Justice Information Center.

Throughout this report, except where noted, rape and attempted rape are combined statistically.

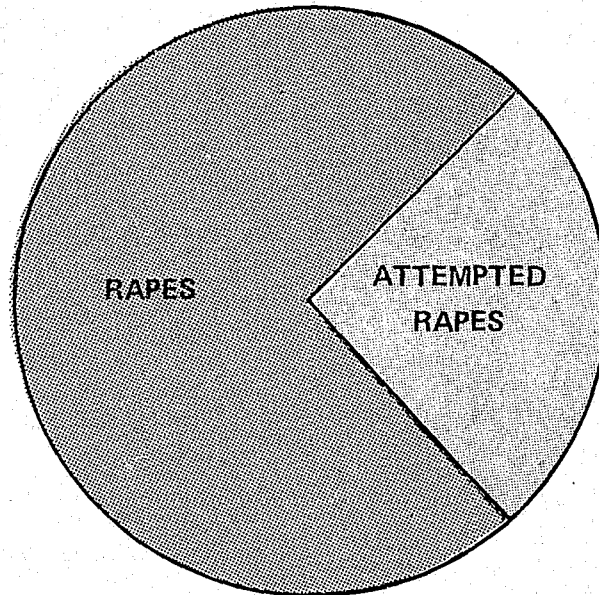
In all tables, percents have been rounded to add to 100.

## RAPE AND ATTEMPTED RAPE IN ARKANSAS, 1977

There were 536 rapes and attempted rapes in Arkansas, for which data were available. Of these, 397 were rapes and 139 were attempted rapes reported by law enforcement agencies. There was an average of 149 law enforcement agencies submitting Uniform Crime Reports each month in 1977. This represented a 15.5% increase in the number of agencies reporting compared to 1976.

Throughout this report, all commentary will be related to the 536 rapes and attempted rapes, except where noted otherwise.

### RAPES AND ATTEMPTED RAPES



RAPES AND ATTEMPTED RAPES	NUMBER	DISTRIBUTION
Total Rapes and Attempted Rapes	536	100 %
Rapes	397	74.1%
Attempted Rapes	139	25.9%

## VICTIMS OF RAPE, 1977

The victims of rape and attempted rape in Arkansas were predominately white (60%) and less than 25 years of age (69%). The victim characteristics by race, sex, and age are:

VICTIM CHARACTERISTICS	NUMBER	DISTRIBUTION
<u>RACE</u>		
White	321	59.9%
Black	213	39.7%
All Other	2	0.4%
<u>SEX</u>		
Female	527	98.3%
Male	9	1.7%
<u>AGE</u>		
Juveniles (under 18)	194	36.2%
18-24	174	32.5%
25-34	85	15.8%
35 and over	83	15.5%
<b>TOTAL</b>	<b>536</b>	<b>100 %</b>

## RAPE RACE DISTRIBUTION

The following table gives the race distribution for the victims and offenders by offense. The first race listed is the race of the victim, and the second race listed is the race of the offender(s). For example: white/black means that the victim was white and the offender was black (1 or more).

VICTIMS/OFFENDER(S)	NUMBER	DISTRIBUTION
White/White	229	42.7%
Black/Black	210	39.2%
White/Black	94	17.5%
Black/White	3	0.6%
Intraracial Rapes (same race)		81.9%
Interracial Rapes (different races)		18.1%

For those rapes and attempted rapes in which the offenders included both white and black, the offense was counted as intraracial or interracial according to which race represented the majority of the offenders.

### RAPE REPORTING TIME, 1977

One-half of the rapes and attempted rapes were known to be reported to law enforcement agencies in less than one hour of the offense.

HOURS REPORTING TIME	NUMBER	DISTRIBUTION
Less than 1	268	50 %
1-4	107	20.0%
4-8	35	6.5%
8-12	27	5.0%
More than 12	78	14.6%
Unknown time lapse	21	3.9%

### NUMBER OF OFFENDERS PER RAPE AND ATTEMPTED RAPE

More than four out of five of the rapes and attempted rapes were committed by a lone offender.

OFFENDER(S) PER OFFENSE	NUMBER	DISTRIBUTION
One (lone)	445	83.0%
Two	53	9.9%
Three	24	4.5%
Four	11	2.0%
More than four	3	0.6%

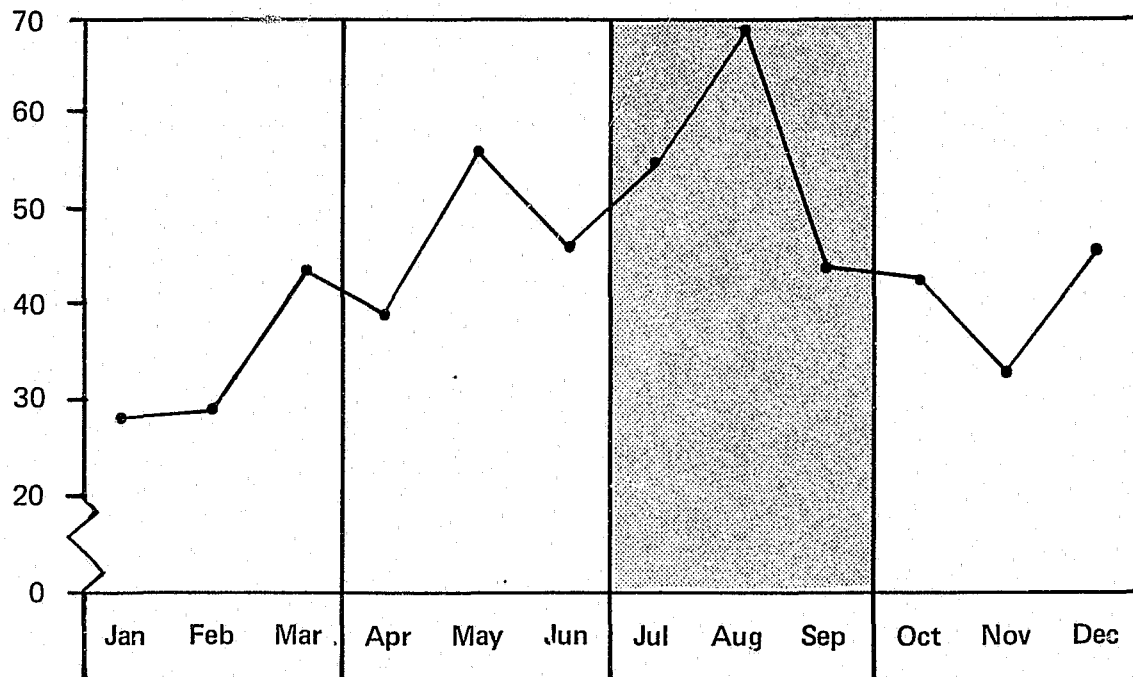
### RELATIONSHIP OF OFFENDER TO VICTIM

A majority of the rapes and attempted rapes were committed by persons unknown to the victim.

RELATIONSHIP	NUMBER	DISTRIBUTION
Unknown to victim	283	52.8%
Known by victim	203	37.9%
Family member	50	9.3%

## RAPES BY MONTH, 1977

More rapes and attempted rapes occurred in August than in any other month, and the third quarter of the year (July, August, September) accounted for almost 1/3 of all rapes in 1977.



MONTH	NUMBER	DISTRIBUTION
January	28	5.2%
February	29	5.4%
March	43	8.0%
First Quarter	100	18.6%
April	39	7.3%
May	56	10.4%
June	47	8.8%
Second Quarter	142	26.5%
July	53	9.9%
August	69	12.9%
September	45	8.4%
Third Quarter	167	31.2%
October	44	8.2%
November	33	6.2%
December	46	8.6%
Fourth Quarter	123	23.0%
Unknown month	4	0.7%

### RAPE BY DAY OF WEEK, 1977

More rapes and attempted rapes were committed on Saturday than on any other day of the week.

DAY OF RAPE	NUMBER	DISTRIBUTION
Sunday	78	14.6%
Monday	65	12.1%
Tuesday	73	13.6%
Wednesday	59	11.0%
Thursday	71	13.3%
Friday	65	12.1%
Saturday	113	21.1%
Day unknown	12	2.2%

### RAPE BY TIME OF DAY

The most common time for the rapes and attempted rates was between the hours of midnight and 2 a.m. Almost half (45.1%) of the rapes occurred between 10 p.m. and 4 a.m.

TIME OF DAY	NUMBER	DISTRIBUTION
a.m. 12:01- 2	93	17.3%
2:01- 4	73	13.6%
4:01- 6	32	6.0%
6:01- 8	18	3.4%
8:01-10	19	3.5%
10:01-noon	13	2.4%
p.m. 12:01- 2	29	5.4%
2:01- 4	24	4.5%
4:01- 6	33	6.2%
6:01- 8	28	5.2%
8:01-10	63	11.8%
10:01-midnight	76	14.2%
Unknown time	35	6.5%



## RAPE SITUATIONS, 1977

### LOCATION OF ORIGINAL CONTACT/ACOST:

The original contact between the victim and offender(s) in almost 1/2 of the rapes and attempted rapes occurred in the victim's residence. The offender was in the victim's residence either by permission or by unlawful entry.

ORIGINAL CONTACT/ACOST	NUMBER	DISTRIBUTION
Victim's residence	245	45.7%
Offender's residence	24	4.5%
Other residences	37	6.9%
Street, parking lot, car, etc.	123	22.9%
Place of business	39	7.3%
All other (and unknown)	68	12.7%

### WEAPON USED TO EXERT FORCE UPON VICTIM:

In more than two out of three of the rapes or attempted rapes, the offender(s) used verbal threats and/or fists to exert force upon the victim.

WEAPON USED	NUMBER	DISTRIBUTION
Firearm	89	16.6%
Knife/Sharp instrument	65	12.1%
Club/Blunt instrument	9	1.7%
Verbal threats, fists, etc.	373	69.6%

### LOCATION OF ACTUAL RAPES AND ATTEMPTED RAPES:

Almost 1/2 of the rapes and attempted rapes occurred in the victim's residence.

LOCATION OF RAPE	NUMBER	DISTRIBUTION
Victim's residence	231	43.1%
Offender's residence	40	7.5%
Other residences	37	6.9%
Street, parking lot, car, road, wooded area, etc.	146	27.2%
Place of business	17	3.2%
All other (and unknown)	65	12.1%

### MEDICAL ATTENTION SOUGHT OR REQUIRED BY VICTIMS

There were 397 rape victims, of which 303 (76.3%) were examined for rape by a physician. There were 58 victims of rape or attempted rape who sustained injuries (10.8%). Of the 58 injured victims, 34 required treatment for their injuries.

### RAPE OFFENDERS (SUSPECTS)

In the 536 offenses of rape and attempted rape, the characteristics of the offender(s) by race and sex are:

OFFENDER(S)	NUMBER	DISTRIBUTION
<u>RACE</u>		
White	230	42.9%
Black	299	55.8%
Both White & Black	7	1.3%
<u>SEX</u>		
Male	534	99.6%
Female	2	0.4%

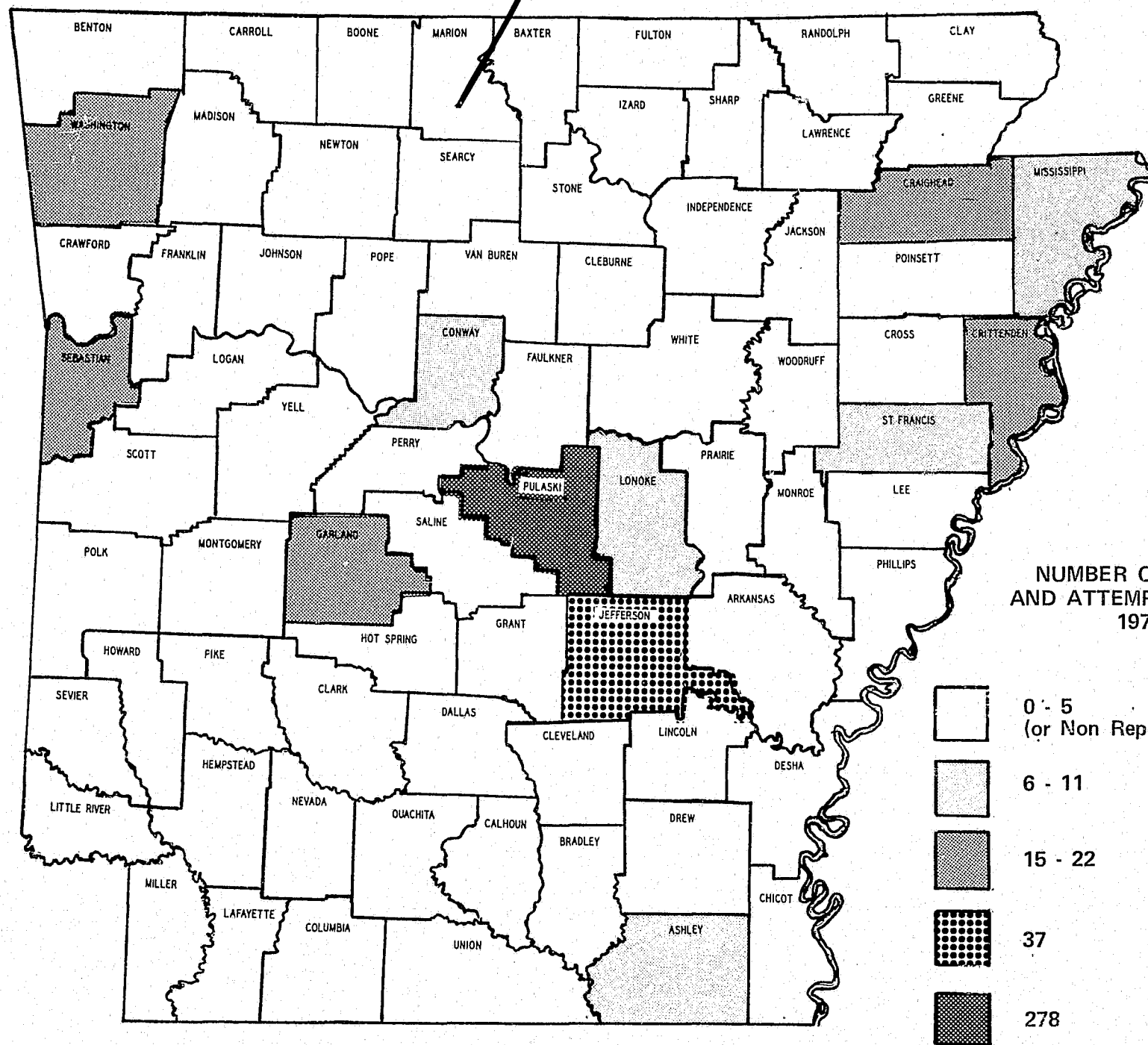
## RAPES, BY COUNTY 1977

The following map shows the total number of rapes and attempted rapes included in this report, by county. All non-shaded counties fall into one of the following categories:

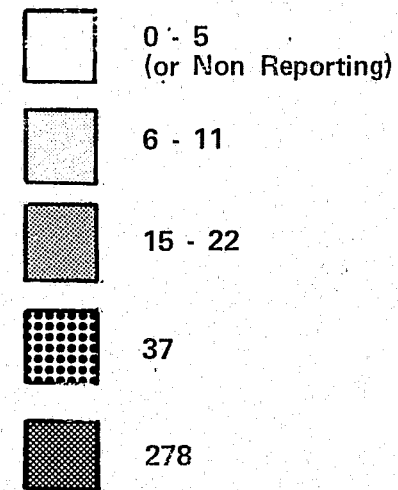
1. The law enforcement agencies in the county reported 0–5 rapes and attempted rapes.
2. The law enforcement agencies in the county did not submit Uniform Crime Reports.

The list following the map gives the number of rapes and attempted rapes included in this report, by law enforcement agency.

The final page is a sample of the collection form used in 1977 to gather the data for this report.



NUMBER OF RAPES  
AND ATTEMPTED RAPES  
1977



**NUMBER OF RAPES AND ATTEMPTED RAPES**  
(By Reporting Agency)

ARKANSAS COUNTY		GARLAND COUNTY		PIKE COUNTY	
DeWitt P.D.	1	Sheriff's Office	4	Sheriff's Office	3
		Hot Springs P.D.	11		
ASHLEY COUNTY		GREENE COUNTY		POINSETT COUNTY	
Sheriff's Office	4	Paragould P.D.	3	Sheriff's Office	2
Crossett P.D.	2			Trumann P.D.	1
BAXTER COUNTY		HEMPSTEAD COUNTY		POLK COUNTY	
Sheriff's Office	1	Hope P.D.	1	Sheriff's Office	3
BENTON COUNTY		HOWARD COUNTY		POPE COUNTY	
Bentonville P.D.	1	Nashville P.D.	1	Russellville P.D.	1
Rogers P.D.	1				
BRADLEY COUNTY		INDEPENDENCE COUNTY		PRAIRIE COUNTY	
Sheriff's Office	1	Batesville P.D.	1	Sheriff's Office	1
CALHOUN COUNTY		JACKSON COUNTY		PULASKI COUNTY	
Sheriff's Office	1	Sheriff's Office	2	Sheriff's Office	68
Hampton P.D.	1	Newport P.D.	3	Jacksonville P.D.	3
CARROLL COUNTY		JEFFERSON COUNTY		Little Rock P.D.	165
Sheriff's Office	1	Sheriff's Office	8	No. Little Rock P.D.	41
		Pine Bluff P.D.	29	Sherwood P.D.	1
CHICOT COUNTY		LEE COUNTY		RANDOLPH COUNTY	
Lake Village P.D.	1	Marianna P.D.	2	Sheriff's Office	4
COLUMBIA COUNTY		LINCOLN COUNTY		ST. FRANCIS COUNTY	
Sheriff's Office	3	Sheriff's Office	1	Sheriff's Office	2
CONWAY COUNTY		LONOKE COUNTY		Forrest City P.D.	9
Sheriff's Office	8	Sheriff's Office	8		
Morrilton P.D.	1	MARION COUNTY		SALINE COUNTY	
CRAIGHEAD COUNTY		Bull Shoals P.D.	1	Benton P.D.	1
Sheriff's Office	2	MILLER COUNTY		SEBASTIAN COUNTY	
Jonesboro P.D.	12	Sheriff's Office	2	Sheriff's Office	2
Bay P.D.	1	Texarkana P.D.	1	Ft. Smith P.D.	20
CRAWFORD COUNTY		MISSISSIPPI COUNTY		UNION COUNTY	
Sheriff's Office	4	Sheriff's Office	4	Sheriff's Office	4
CRITTENDEN COUNTY		Blytheville P.D.	7	El Dorado P.D.	1
Sheriff's Office	9	MONROE COUNTY		WASHINGTON COUNTY	
West Memphis P.D.	13	Sheriff's Office	3	Sheriff's Office	1
DESHA COUNTY		NEVADA COUNTY		Fayetteville P.D.	12
Sheriff's Office	4	Prescott P.D.	1	Springdale P.D.	5
McGehee P.D.	1	NEWTON COUNTY		U of A Public Safety	2
DREW COUNTY		Sheriff's Office	1	WHITE COUNTY	
Monticello P.D.	3	OUACHITA COUNTY		Sheriff's Office	2
FAULKNER COUNTY		Camden P.D.	2	Searcy P.D.	2
Sheriff's Office	3	PERRY COUNTY		Bald Knob P.D.	1
Conway P.D.	1	Sheriff's Office	2	WOODRUFF COUNTY	
				Sheriff's Office	1
				TOTAL	536



## SUPPLEMENTARY RAPE REPORT

1977

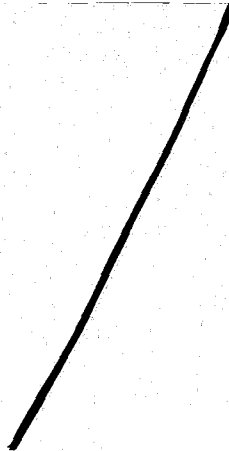
AGENCY REPORTING THE RAPE: AR 00-000000 PD ☐ SO ☐  
MONTH REPORTED ON UCR: \_\_\_\_\_ OFFENSE/REPORT NUMBER \_\_\_\_\_  
REPORTED ON UCR AS: FORCIBLE RAPE ☐ ATTEMPTED FORCIBLE RAPE ☐

The following information should be completed for each forcible rape or attempted forcible rape that is reported on Return A. This report will be used for an analysis of forcible rape. Fill in all blank spaces and check (✓) in the boxes. DO NOT INCLUDE THE VICTIM'S NAME ON THIS REPORT.

1. VICTIM of rape: race \_\_\_\_\_ sex \_\_\_\_\_ DOB \_\_\_\_\_
2. Date and time of rape: month/date \_\_\_\_\_ time of day \_\_\_\_\_ a.m. \_\_\_\_\_ p.m.
3. Date and time rape reported to police: date \_\_\_\_\_ time \_\_\_\_\_ a.m. \_\_\_\_\_ p.m.
4. Location of rape: type place victim was first approached (accosted) \_\_\_\_\_  
(example: downtown parking lot, home of victim, etc.)  
type place rape occurred \_\_\_\_\_  
(example: home of victim, wooded area, car, another city, etc.)
5. MEDICAL ATTENTION: Routine examination yes ☐ no ☐ unknown ☐  
Other injuries yes ☐ no ☐ unknown ☐  
Treatment required for other injuries yes ☐ no ☐ unknown ☐
6. Type of weapon utilized to exert force upon the victim: (check one)  
firearm ☐ knife/sharp instrument ☐ club/blunt instrument ☐ hands/fists ☐
7. OFFENDER(S): number of offenders \_\_\_\_\_

(In the following chart, if family member is checked, write the relationship of offender to victim also.)

OFFENDERS	SEX	RACE	Relationship to victim (check one)		
			family member	friend/acquaint.	stranger/unknown
1	_____	_____	<input type="checkbox"/> _____	<input type="checkbox"/>	<input type="checkbox"/>
2	_____	_____	<input type="checkbox"/> _____	<input type="checkbox"/>	<input type="checkbox"/>
3	_____	_____	<input type="checkbox"/> _____	<input type="checkbox"/>	<input type="checkbox"/>
4	_____	_____	<input type="checkbox"/> _____	<input type="checkbox"/>	<input type="checkbox"/>



**END**