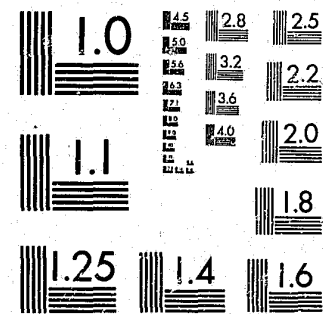


National Criminal Justice Reference Service

ncjrs

This microfiche was produced from documents received for inclusion in the NCJRS data base. Since NCJRS cannot exercise control over the physical condition of the documents submitted, the individual frame quality will vary. The resolution chart on this frame may be used to evaluate the document quality.



MICROCOPY RESOLUTION TEST CHART
NATIONAL BUREAU OF STANDARDS-1963-A

Microfilming procedures used to create this fiche comply with the standards set forth in 41CFR 101-11.504.

Points of view or opinions stated in this document are those of the author(s) and do not represent the official position or policies of the U. S. Department of Justice.

National Institute of Justice
United States Department of Justice
Washington, D. C. 20531

DATE FILMED

6/11/81

BERKELEY POLICE DEPARTMENT



61951

ANNUAL REPORT
1978

As a law enforcement officer, my fundamental duty is to serve mankind; to safeguard lives and property; to protect the innocent against deception, the weak against oppression or intimidation, and the peaceful against violence or disorder; and to respect the Constitutional rights of all men to liberty, equality and justice.

I will keep my private life unsullied as an example to all; maintain courageous calm in the face of danger, scorn, or ridicule; develop self-restraint; and be constantly mindful of the welfare of others. Honest in thought and deed in both my personal and official life, I will be exemplary in obeying the laws of the land and the regulations of my department. Whatever I see or hear of a confidential nature or that is confided to me in my official capacity will be kept ever secret unless revelation is necessary in the performance of my duty.

I will never act officiously or permit personal feelings, prejudices, animosities or friendships to influence my decisions. With no compromise for crime and with relentless prosecution of criminals, I will enforce the law courteously and appropriately without fear or favor, malice or ill will, never employing unnecessary force or violence and never accepting gratuities.

I recognize the badge of my office as a symbol of public faith, and I accept it as a public trust to be held so long as I am true to the ethics of the police service. I will constantly strive to achieve these objectives and ideals, dedicating myself before God to my chosen profession. . . law enforcement.

TO: MICHAEL LAWSON. Acting City Manager

FROM: O. H. SYLVESTER, Chief of Police

SUBJECT: ANNUAL REPORT FOR THE CALENDAR YEAR 1978

I am pleased to submit to you the Police Department Annual Report for the calendar year 1978.

Although the overall incidence of major crime remained approximately the same in 1978 over 1977, the crimes of burglary and rape were down 14.5% and 20% respectively. The fact that larcenies increased by over 500 cases counteracted an otherwise decrease in major crime totals.

Departmental personnel responded to 76,950 calls for service during 1978, an increase of over 2,500 from 1977. Police Officers, Police Reserves and Paraprofessionals issued 15,820 hazardous and 39,269 non-hazardous citations which resulted in a return of over \$250,000 to the City in fines and forfeitures. These statistics also indicate literally hundreds of police-citizen interactions daily. Even though police-citizen contacts are often under adverse circumstances, personnel complaints for the year numbered only 133, with most of the allegations determined to be without justification.

In July of 1978 the "911" Emergency Calling System was instituted in the Department's reorganized Communications Bureau. Citizens may now report any police, fire or medical emergency simply by dialing 911 on any phone within the county and the call will be automatically directed to the proper law enforcement agency. Approximately 30% of our emergency calls are received through the system. "911" together with the professional staff added to the Communications Center has provided a more efficient response to citizens' calls for service.

As I write this the prospect of Proposition 13 cuts to the Police Department loom as a dark reality. The maintenance of our current level of service will rely heavily on continued cooperation and understanding from the City Manager's Office, the City Council and the Police Review Commission. May we recognize also the citizens of Berkeley who have contributed significantly to the support of Departmental programs.

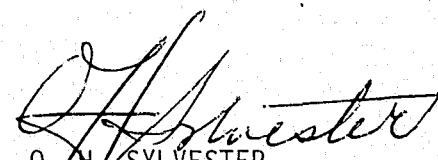

O. H. SYLVESTER
Chief of Police

TABLE OF CONTENTS

	<u>Page</u>
Law Enforcement Code of Ethics Letter of Transmittal	
Demographic Facts About Berkeley.....	1
Narrative Reports:	
Administrative Division.....	3
Patrol Division.....	6
Service Division.....	10
Detective Division.....	14
	<u>Table</u>
Plant and Equipment.....	1
Activity of Record Bureau.....	2
Expenditures for Fiscal Year 1977 - 1978.....	3
Distribution of Personnel by Activity.....	4
Police Personnel Appointments, Resignations, Retirements and Military Leaves.....	5
Salary Scale and Distribution of Personnel.....	6
Education, Age and Experience Distribution of Personnel.....	7
Summary of Police Personnel Absences.....	8
Annual Comparison of Police Overtime in Hours, 1974 - 1978.....	9
Changes in Police Personnel, Calendar Year 1978.....	10
Personnel Complaints and Personnel Commendations, 1978.....	11
Disposition of Personnel Complaints Received.....	12
Activity of Bureau of Identification.....	13
Activity of Warrant Bureau.....	14
Motor Vehicle Collisions by Type and Classification.....	15
Age and Sex of Persons Killed by Collision Classification....	16
Comparison of Traffic Enforcement to Injury and Fatal Collision Causes.....	17
Activity of Pedestrians Killed and Injured.....	18
Motor Vehicle Collision Comparison, 1973 - 1978.....	19
City of Berkeley Census Tracts.....	20
Major Offenses by Census Tract - 1978	21
Crime Clock.....	22

	<u>Table Number</u>
Per Cent of Major Offenses Cleared Compared with Other United States Population Centers.....	23
Major Offense Rate Compared with Other United States Population Centers.....	24
Offenses Known and Arrests.....	25
Major Offenses Known To and Cleared by Police.....	26
Age, Sex and Race of Adults Arrested.....	27
Age, Sex and Race of Juveniles Detained.....	28
Adult Criminal Charges and Dispositions.....	29
Juvenile Detentions and Dispositions.....	30
Residence Data on Persons Arrested for Certain Offenses...	31
Auto Theft and Recoveries.....	32
Value of Property Reported Stolen and Amount Recovered by Kind of Property.....	33
Value of Property Reported Stolen and Amounts Recovered by Type of Offense.....	34
Persons Reported Missing.....	35
Suicides and Attempts.....	36
Miscellaneous Services Rendered.....	37

PREPARED BY THE
ADMINISTRATIVE DIVISION
PLANNING AND RESEARCH BUREAU

Captain Thomas W. Johnson
Lieutenant Peter A. Meredith
Officer Michael J. Holland

Typist: ISC Linda M. Billett

DEMOGRAPHIC FACTS ABOUT BERKELEY

SCHOOLS AND COLLEGES: Fourteen primary schools, two junior high schools and one high school with two campus facilities.

One of the world's largest universities, the University of California with an enrollment of 29,304 in the Fall of 1978, is located in the east central portion of the city. Situated adjacent to the University grounds is the State School for the Deaf and the Blind with an enrollment of 124; Armstrong College, schools of business and professional law with an enrollment of 623, is located in Central Berkeley.

MUNICIPAL GOVERNMENT: Council-Manager form of government since 1923.

ASSESSED VALUATION: Total assessed value of taxable property, \$426,969,136. This does not include approximately 30% of the incorporated area which is publicly owned by Federal, State and local agencies.

INDUSTRY: About 310 industrial plants producing a wide variety of products.

POPULATION: Official figures released by the Bureau of Census indicate a Berkeley population of 114,081.

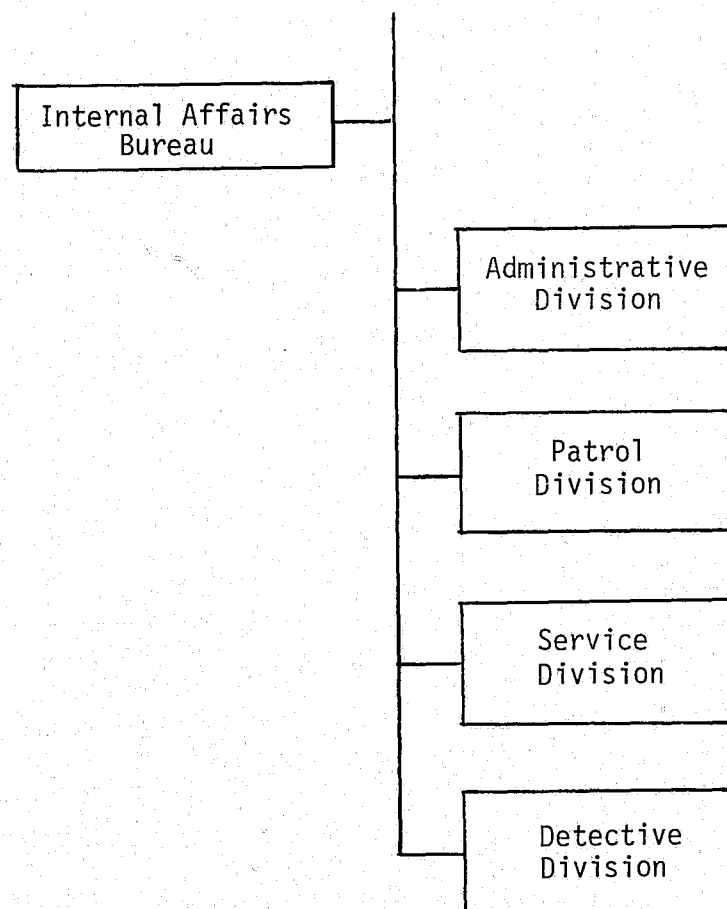
AREA: 10.16 square miles, or 6,503 acres of developed land; 7.94 square miles of undeveloped waterfront remain with the incorporated boundaries.

TRANSPORTATION: A metropolitan bus system connects directly and by transfer with several hundred miles of bus lines in adjoining communities and San Francisco. Berkeley is also an integral part of the Bay Area Rapid Transit System, which began East Bay operation in 1972 and extended its service to San Francisco and Daly City in 1974.

RECREATION: Thirty-six public parks; remodeled and enlarged marina; and a modern concrete surfaced fishing pier extending 3,000 feet into San Francisco Bay. Tilden Regional Park, comprising 2,100 acres of recreational area and available to a metropolitan population of more than 1,090,000 persons, is located at the eastern Berkeley city limit.



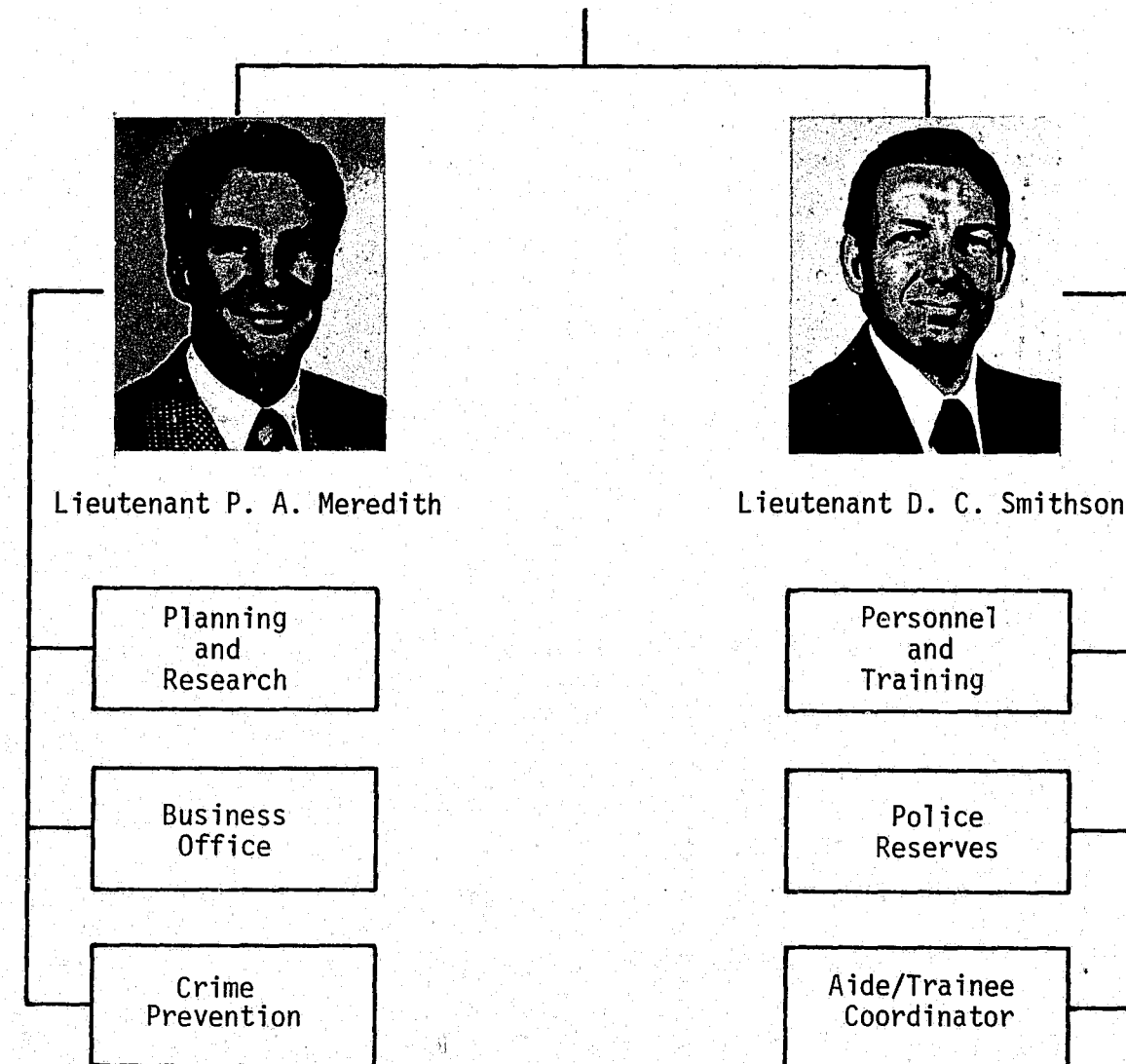
Chief O. H. Sylvester



ADMINISTRATIVE DIVISION



Captain T. W. Johnson



ADMINISTRATIVE DIVISION

The Administrative Division is responsible for virtually all Department Functions that are not directly related to criminal investigation or associated record-keeping.

The Division is commanded by a Captain, who is assisted by two lieutenants. One lieutenant is in charge of the Personnel and Training Unit, Police Reserve Program, and the Police Aide/Trainee (Cadet) Program. The other lieutenant is in charge of the Planning and Research Bureau, Business Office and the Crime Prevention Unit.

The Personnel Section of the Personnel and Training Unit works closely with the City Personnel Department in the recruiting and se-



lection of new police employees and is responsible for pre-employment background investigations. It is also responsible for the maintenance of personnel records and employee health and safety. The Training Section is responsible for the administrative management of all Department training and maintenance of training records. During 1978 the Section administered 16,078 hours of training which was provided to employees.

The Berkeley Police Reserve continued to be a viable unit of the Police Department and numbered 71 officers on December 31, 1978. Members provide back-up support to regular patrol officers, direct football traffic, respond to a variety of parking violation com-

plaints, and conduct some minor traffic collision investigations. During 1978 Police Reserve officers contributed 10,420 hours of duty to the City without compensation.

The Police Aide/Trainee (Cadet) Program provides part-time employment to young people, age 17-26 years, who are interested in entering police work but have not yet completed their education. Aides and Trainees provide clerical and related types of assistance to all Divisions within the Department.



The Planning and Research Bureau functions as a staff advisory unit to all Divisions and to the Chief of Police. This unit provides information on new techniques and programs of value to the Department, prepares federal and state grant applications, maintains current information on applicable court decisions and legislation, prepares the Departmental budget and conducts studies as requested by the Chief of Police.

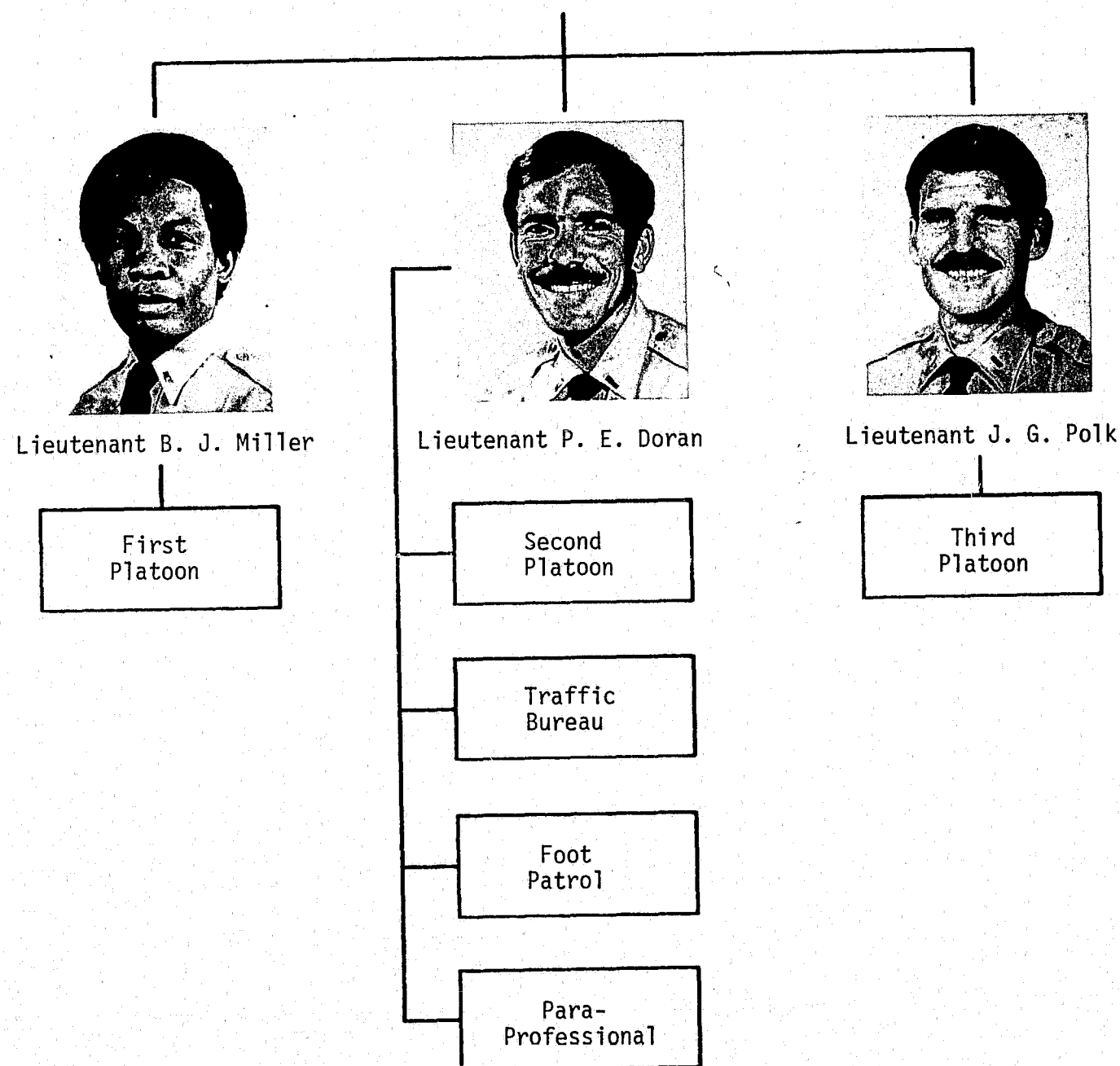
The Business Office is responsible for timekeeping, preparation of payroll, proper accounting of all monies received by the Department, processing of requisitions for supplies and liaison with the Finance Department.

The Crime Prevention Detail coordinates public appearances in the community by police personnel, conducts home security checks, assists in the formation of neighborhood groups, participates in neighborhood workshop meetings, and is responsible for the formulation of crime prevention programs.

PATROL DIVISION



Captain M. J. Healy



PATROL DIVISION

The Patrol Division is commanded by a Captain with the assistance of three Lieutenants. The Division is comprised of three Patrol Platoons, a Traffic Bureau, a Foot Patrol Detail, a Senior Citizens Program and a Paraprofessional Unit.

The Patrol Division is the Department's primary representative to the community. Providing immediate police service on a 24-hour-a-day basis, it is the first-line unit in the prevention and investigation of crime. Specific functions of the Patrol Division include continual patrol of residential and commercial areas to prevent criminal activities; investigation of all reports alleging violations of the law, including the necessary follow-up investigations; identification and arrest of criminal offenders; investigation of



traffic collisions and participation in traffic enforcement programs; response to all types of emergency calls; and performance of miscellaneous services related to community concerns.

The Traffic Bureau's responsibilities include the enforcement of traffic regulations; investigation of traffic hazards and the initiation of remedial measures; preparation and maintenance of charts and summaries of traffic collisions for use by officers in selective enforcement programs; cooperation with schools and other organizations in traffic safety education; preparation of specialized traffic studies; cooperation with the City Traffic Engineer in solving traffic problems; promulgation of necessary traffic control legislation; traffic control at special functions; and preparation of reports as directed.



The Traffic Bureau also includes a Bicycle Detail which regulates bicycle licensing and operation and conducts and supervises a bicycle court which is comprised of youngsters from the community.



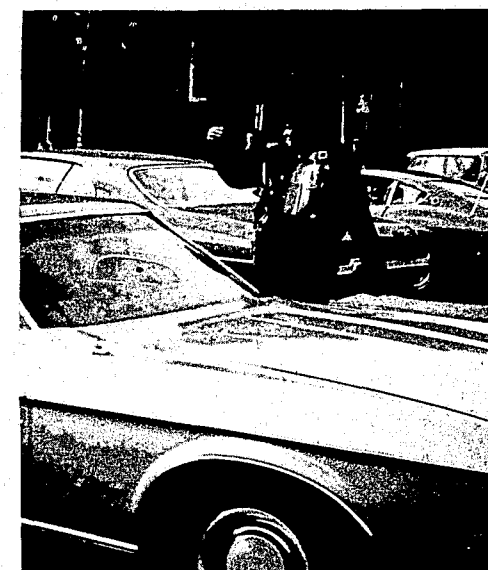
The Foot Patrol Detail is supervised by The Director of Junior Traffic Police, a Sergeant with a two-fold responsibility. In cooperation with local schools, he administers the Berkeley Junior Traffic Police and Adult Crossing Guard Programs. He additionally supervises the Foot Patrol Detail whose members walk various business districts throughout the City. Foot Pa-



trol officers also provide added protection to senior citizens through supervision of a Federally funded program titled "Senior Citizen Safety Program". Under this program, six civilian employees assist senior citizens at the senior citizen centers and throughout the City by providing safe corridors of travel, security checks, property identification, and crime prevention information and techniques.



This program was terminated in mid-year when CETA funds ran out. Foot patrol in the south campus area of the City is jointly provided with cooperation of officers from the University of California Police Department.



In December of 1975 another Federally funded grant program titled "Reduction of Response Time Through Utilization of Paraprofessional Personnel" was initiated within the Patrol Division. The program, now into its fourth year, consists of uniformed, non-sworn Police Service Assistants supervised by a Sergeant handling non-hazardous calls in the field. The objective of the program is to relieve beat officers of as many relatively minor calls as possible so that sworn officers' response time to more serious calls might be reduced.



A Barricaded Subject/Hostage Negotiations Team, comprised of carefully selected officers, was organized in 1976. The primary aim of the unit is the non-violent resolution of situations involving a barricaded subject. If violence should become inescapable, the officers are specifically trained in response techniques that minimize danger to innocent persons.

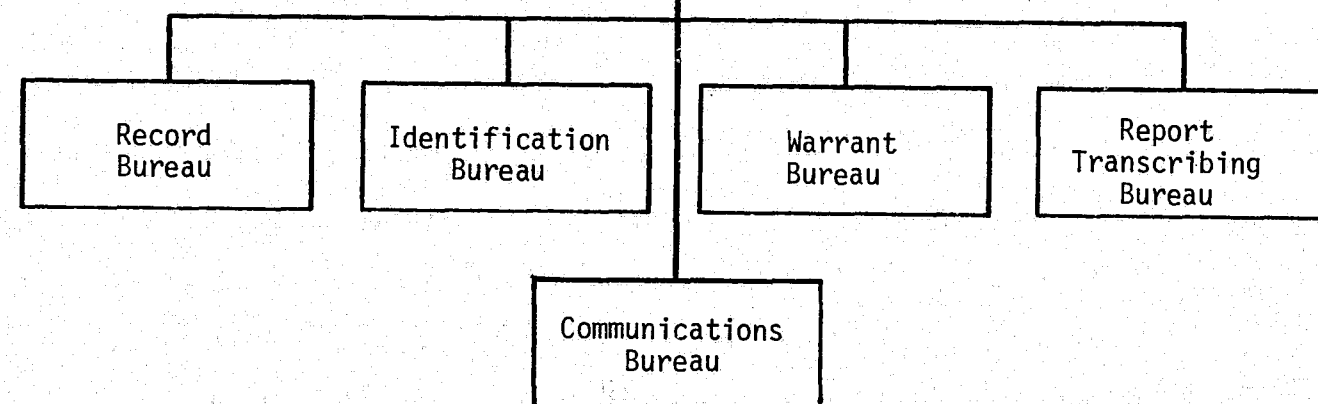
SERVICE DIVISION



Captain W. E. Jenkins



Lieutenant R. J. Peters



SERVICE DIVISION

The Service Division is commanded by a Captain who is assisted by two Lieutenants and several sworn and non-sworn supervisors. The Division is divided into five Bureaus: the Record Bureau, Identification Bureau, Warrant-Fugitive Bureau, Report Transcribing Bureau and the Communications Bureau. The Division operates with a total of 76.5 authorized sworn and non-sworn positions; however, a number of these positions remained vacant throughout the year.

The Service Division provides the support functions necessary to operate the Police Department. These functions include: maintenance of all police activity records; operation of the Communications Bureau; transcription of incident reports dictated by patrol officers; technical crime scene investigations and identification; custody of



prisoners and operation of the jail; operation of the patrol wagon; custody and control of physical evidence, property and police supplies; telecommunications network terminal operations; traffic, misdemeanor and felony warrant processing and service; Departmental data and statistical production on various Departmental activities; and informational services to the public.

The Record Bureau processed 76,950 police reports in 1978. This figure does not represent the "non-official" reports originated and processed within the Division. Report processing includes transcription, duplication, routing, review, indexing, abstraction of statistical data, microfilm storage and security of the finished product.

The Identification Bureau provides technical crime scene investigation for all major crimes. During the year the ID Bureau conducted 3,712 crime scene investigations, leading to 36,953 fingerprint comparisons, resulting in the positive identification of 257 persons responsible for various crimes. ID Bureau personnel provide expert court testimony on matters of physical evidence.

On July 23, 1979, the Warrant Bureau and Fugitive Detail were combined.

The Warrant/Fugitive Bureau processed 17,305 felony, misdemeanor and traffic warrants during the year. In addition 2,292 warrants were received from outside agencies for service on persons in custody in the city of Berkeley.



The Telecommunications Center Processed 24,424 teletype messages during the year. The Center also handled in excess of 257,000 messages from and inquiries into the Police Information Network (PIN), Stolen Vehicle System (SVS), and National Crime Information Center (NCIC) communications systems.



The Report Review Unit was reorganized in July of 1977 and has enabled the Department to be more consistent in report quality and to reduce the number of problems with follow-up investigations. In 1978 this unit reviewed more than 77,000 reports, processing 2,000 pages of written material daily.

The Communications Bureau was formed in July of 1978, taking over the operation of the Communications Center, a function previously performed by the Patrol Division. The Bureau is headed by a Lieutenant and has an authorized strength of 28 persons. By creating a Bureau whose sole responsibility is communications, and staffing that Bureau with permanent, well-trained employees, previous problems concerning inadequate response to called for services have been almost eliminated.

DETECTIVE DIVISION



Captain D. T. Hickman



Lieutenant T. J. Haley

Inspectors
Bureau



Inspector A. R. Bierce

Juvenile
Bureau

DETECTIVE DIVISION

The Detective Division, commanded by a Captain with the assistance of a Lieutenant of Inspectors, is comprised of the Inspectors Bureau, the Juvenile Bureau, and the Special Investigations Bureau. The general overall function of the Division is to assist, advise and coordinate the efforts of the Patrol Division within the specialized parameters delineated below.

The Inspectors Bureau consists of eight Details including the Homicide Detail, responsible for homicide, felony assault and missing person investigations; the Sex Crimes Detail, responsible for rape and felony sex offense investigations and coordination of cases involving misdemeanor sex offenses; the Robbery Detail, responsible for robbery, purse snatch, bribery, extortion, kidnapping and illegal weapons investigation; the Burglary Detail, responsible for residen-



tial and commercial burglary and receiving and/or possession of stolen property investigations; the Theft Detail, responsible for grand theft, bunco and fraud investigations and the inspection of second-hand establishments; the Auto Detail, responsible for the investigation of vehicle theft, auto burglary, thefts from vehicles, and felony offenses involving drunk driving and hit-run driving; the Forgery Detail, responsible for investigation and case preparation in matters of forgery, bad checks and counterfeiting, and credit card offenses; and the General Works Detail, responsible for arson, escape and jail breaking investigations, organized crime investigations, and investigations involving explosive devices.



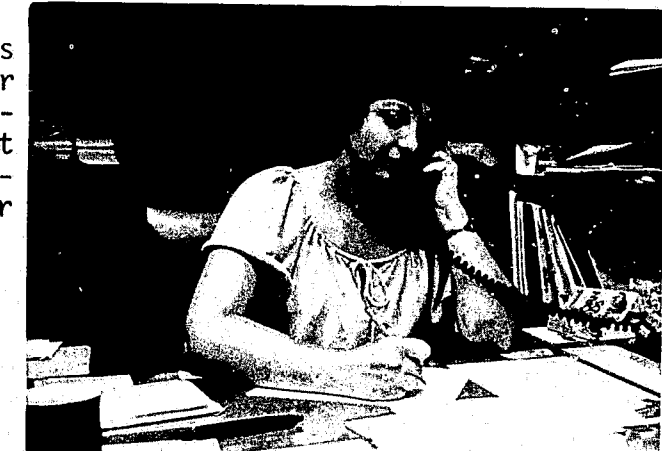
The Press Officer, also a member of the Inspectors Bureau, maintains liaison with and provides information to the news media regarding police investigations and other functions and programs of the Police Department.

Several organizational changes occurred during the year. The Lieutenant assigned as the Director of the Juvenile Bureau was transferred in July to the newly established Communications Bureau of the Service Division. In July the Fugitive Detail was transferred to the Service Division and combined with the Warrant Bureau.

In April a woman officer was assigned as the Departmental Coordinator of Victim Services and Domestic Violence investigations. In addition this person serves as liaison to a number of community agencies.

The Special Investigations Bureau is responsible for investigation of violations involving illicit drug activity, prostitution, gambling and liquor laws.

The attention given to street prostitution along lower University Avenue in 1977 continued this past year; however, there was a dramatic decrease in the number of prostitution arrests made. The continued cooperation of the Berkeley-Albany Municipal Court was a contributing factor in this reduction.



YEAR	PERSONS ARRESTED FOR SOLICITING	OFFENSES CHARGED
1976	248	372
1977	400	616
1978	60	114

VOLUME OF NARCOTICS AND DANGEROUS DRUGS SEIZED
1976 THROUGH 1978

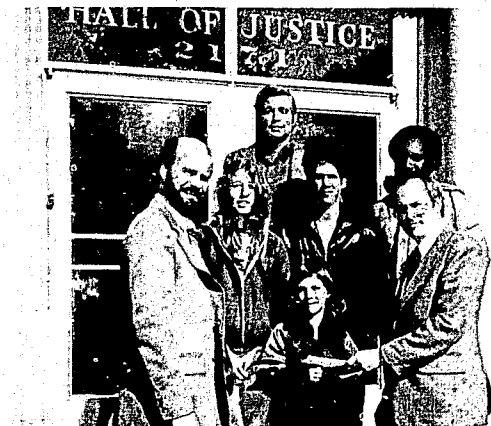
Year	Heroin Grams	Cocaine Grams	Mari- juana Pounds	Hash- ish Grams	LSD Units	Dangerous Drugs Units
1976	4,012.10	2,899.40	144.10	836.90	4,656.00	31,919.00
1977	393.30	2,064.00	32.44	239.00	1,445.00	1,192.00
1978	4,480.00	157.00	29.18	519.00	80,173.00	258.00

The Juvenile Bureau is responsible for the review, evaluation and Departmental disposition of all juvenile offenders; innovating, planning and implementing delinquency prevention programs; liaison and coordination with other agencies involved in the juvenile justice process; counseling and supervision of youthful offenders; and providing assistance to and cooperating with other organizations working in behalf of youth.



During 1978 juvenile arrests totaled 1,553 offenders, down 3.9% from the previous year. Rather dramatic decreases were noted in the area of arrests for burglary, sexual offenses and narcotic related offenses, with some increase in the arrest statistics in the areas of assaults, petty theft and auto theft.

Diversion of juveniles from the juvenile justice system continued to be a high priority for Bureau personnel. Of the 1,553 youngsters referred to the Juvenile Bureau through police contacts, 47% were diverted into Departmental or community programs as an alternative to being placed in the juvenile justice system. Such referrals to community agencies generally provide for direct and more productive involvement with the problems that confront youngsters and contribute to their criminality.



During 1978 Juvenile Bureau staffing was decreased by four positions, including a lieutenant who served as the Director of the Bureau, two male juvenile officers, and a civilian employee who was serving in the capacity of a community service assistant. Despite these cutbacks in manpower, the Bureau has continued to emphasize working with youngsters in the community where they live. Departmental programs, such as camping trips, fishing trips, educational and vocational tours during the summer months and intensive supervision programs have continued. These programs are recognized as an effective means of assisting early offenders in making a successful adjustment into society, rather than thrusting those youngsters into the criminal justice process.

A strong emphasis on training continued in 1978 with Bureau personnel attending courses on child abuse and sexual exploitation of children, family crisis intervention, counseling of delinquent adolescents, and juvenile law enforcement officers training.

table 1
PLANT AND EQUIPMENT

VEHICLES

Services	4
Prisoner van, radio equipped	1
ID vehicle/Warrant Bureau	3
Patrol	51
Beat Patrol/Pool	44
Foot Patrol/Police Reserve	4
Traffic Bureau, radar equipped	3
Detective	6
Inspectors Bureau/Juvenile	6
Administrative	8
Total	69

OTHER EQUIPMENT

Portable radios, transistor type, hand held	73
Silent alarms to Communications Center	194
Police call boxes	28

Police Radio Station -- KSL 359, operating on 460.175 M.C. duplex

Hall of Justice Equipment: custom built Communications Center, 12 channel capacity with four complete operating positions, 90 watt rating.
Effective radiated power 350 watts.

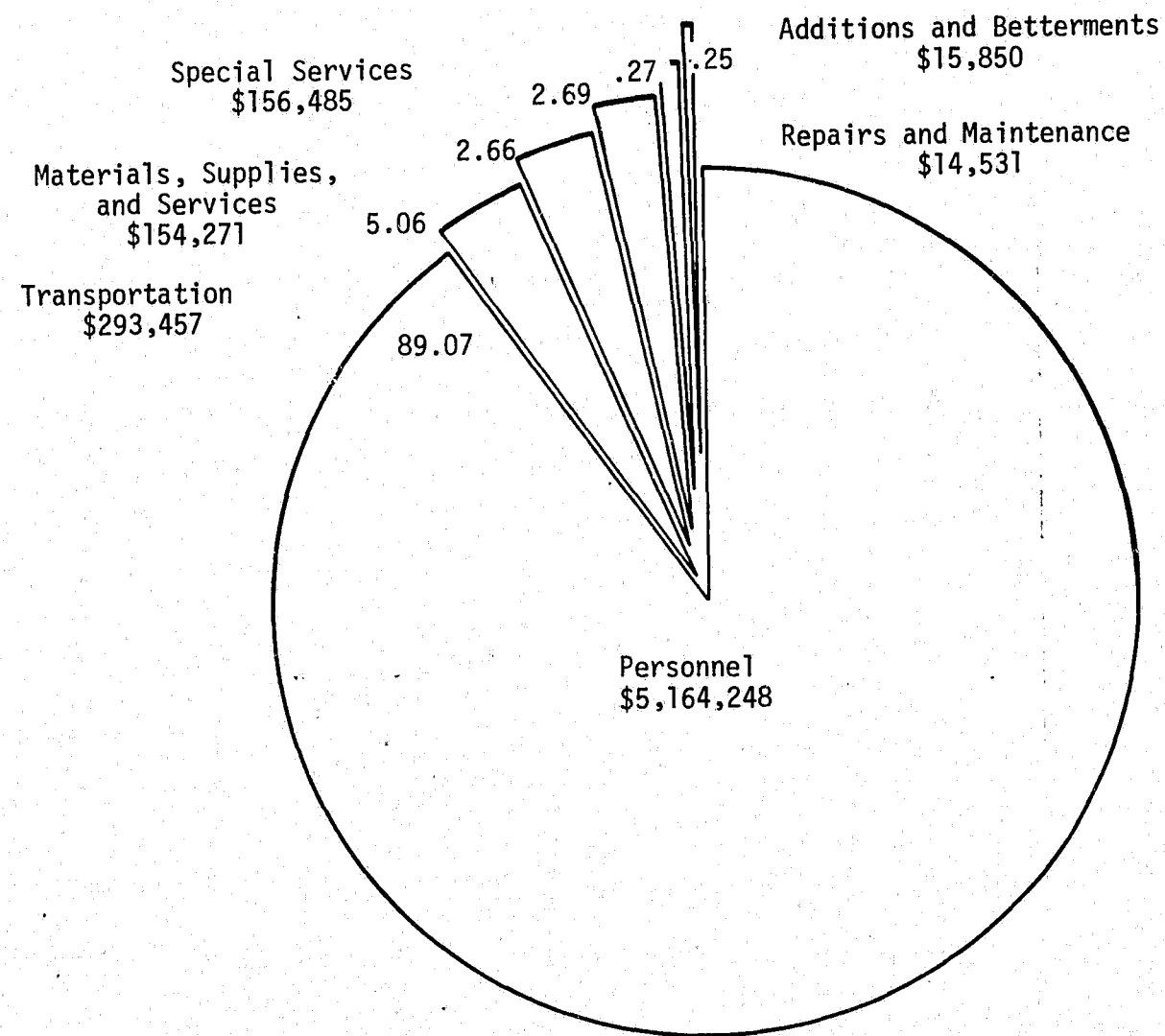
Approximate usable range:

Station to Car -- 35 miles
Car to Car -- 6 miles
Car to Station -- 20 miles

table 2
ACTIVITY OF RECORD BUREAU

	<u>1977</u>	<u>1978</u>
Reports processed and filed	72,521	76,950
Jail Custodies		
Berkeley arrests	4,499	4,538
Outside agency arrests	455	493
Total Jail Count	4,954	5,031

table 3
EXPENDITURES FOR FISCAL YEAR 1977-78
POLICE DEPARTMENT



TOTAL 1977-78 BUDGET: \$5,798,842

table 4
Distribution of Personnel by Activity

	1974*		1975*		1976*		1977*		1978	
	Authorized	Actual	Authorized	Actual	Authorized	Actual	Authorized	Actual	Authorized	Actual
Chief of Police	1	1	1	1	1	1	1	1	1	1
Office of the Chief	8	8	9	9	10	10	11	14	4	4
Administration	-	-	-	-	-	-	-	-	9	12
Personnel and Training	7	8	5	5	5	5	5	5	6	6
Police Reserves	2	1	2	2	2	2	2	2	2	2
Trainees/Aides	11.5	8	12.5	8.5	7.5	6	7.5	7	7.5	5.5
Inspectors Bureau	21	20	21	19	21	20	23	25	24	26
Juvenile Bureau	10	10	10	10	10	10	10	10	6	6
Special Investigations Bureau	4	4	4	4	4	4	4	4	4	4
Patrol Platoons	110	108	119	114	115	109	124	111	105	99
Traffic Bureau	7	5	6	6	6	6	6	5	4	3
Foot Patrol Detail	8	8	8	7	8	8	8	8	8	8
Warrant Bureau	9	8	7	7	8	8	8	8	7	4
Record Bureau	32	36	32	31	30	30	30	30	31	27.5
Communications Bureau	-	-	-	-	-	-	-	-	29	27
Report Transcribing Bureau	6	5.5	7	6.5	5.5	3	5.5	4	5.5	4
Identification Bureau	8	8	9	9	9	9	9	9	4	4
	248	240.5	256.5	242	246	235	258	247	257	243

*These columns do not include Community Relations and Crime Specific Bureau activities which were part of overall department distribution in those years. Eliminated this year.

table 5
Sworn Police Personnel
Appointments, Resignations, Retirements, Military Leaves

	1974	1975	1976	1977	1978
Appointed and Reinstated	36	10	9	18	17
Resigned or Dismissed	24	15	15	10	9
Retired	5	1	1	5	3
Died	0	0	0	0	0
On Extended Military Leave	1	1	1	2	0
On Leave of Absence	0	0	0	2	0
On Pension	72	72	72	74	74

table 6

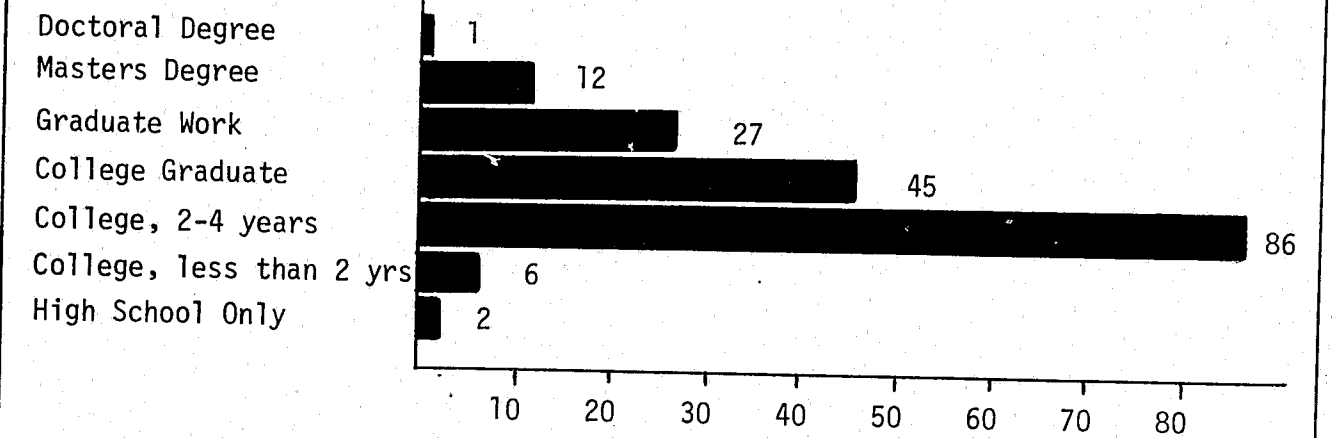
SALARY SCALE AND DISTRIBUTION OF PERSONNEL
(Effective December 31, 1978)

Title	Auth No.	Monthly Salary	Administrative Division				Detective Division			Patrol Division			Service Division				Communications Bureau
			Office of the Chief Administration	Personnel and Training	Police Reserves	Inspectors Bureau	Juvenile Bureau	Spec. Investigations	Patrol Platoons	Traffic Bureau	Foot Patrol Detail	Record Bureau	Identification Bureau	Warrant Bureau	Report Transcribing Bureau		
Chief of Police	1	2655-3664	1														
Captain	4	2506-2761		1			1			1			1				
Lieutenant	8	2217-2445		1	1		1			3			1				1
Inspector	10	1963-2164					8	1							1		
Internal Affairs Director	1	1848-2302	1														
Special Investigations Director	1								1								
Identification Expert	1	1870-2059												1			
Sergeant	23	1870-2059			1	1				13	1		2				5
Junior Traffic Police Director	1	1694-2059									1						
Patrol Officer	130	1464-1870	2	2	2		11	3	3	84	2	8	4		2		7
Asst Patrol Officer	1	1094-1395						1									
Dept. Adm. Officer	1	1790-2160		1													
Asst. Adm. Analyst	1	1208-1451											1				
Admin. Secretary	1	1154-1385	1														
Photographer	1	1130-1355												1			
Senior Clerk	1	1127-1237														1	
Supervis. Clerk II	1	1154-1385											1				
Senior Account Clerk	1	1037-1237		1													
Police Serv. Asst	33	1139-1243								3			15		1		14
Comm. Attendant	2	978-1091															2
Inter. Steno Clerk	3	1008-1102		1	1		1										
Key Punch Operator	2	1006-1102											2				
Inter. Typ. Clerk	19.5	961-1052			1	1	2	1		1			4	2	3	4.5	
Inter. Acct. Clerk	2	1008-1102		2													
Trainee/Aide	7.5	3.60-5.19			7.5												
TOTAL	257		5	9	13.5	2	24	6	4	105	4	8	31	4	7	5.5	29

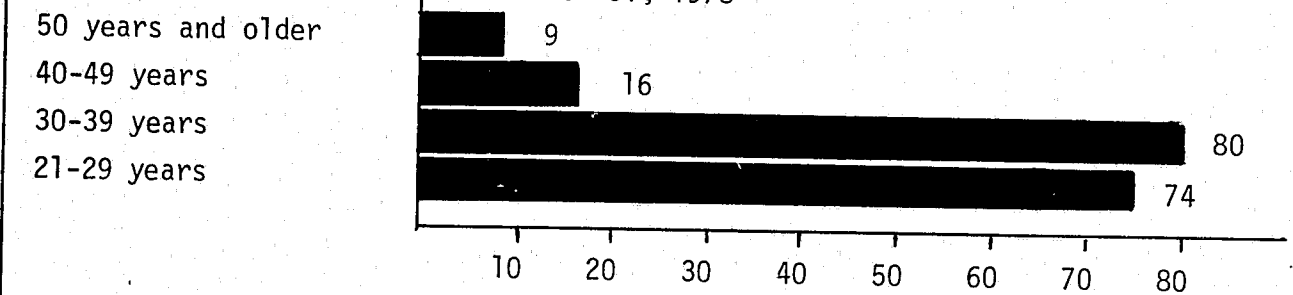
table 7

EDUCATION, AGE & EXPERIENCE DISTRIBUTION OF PERSONNEL

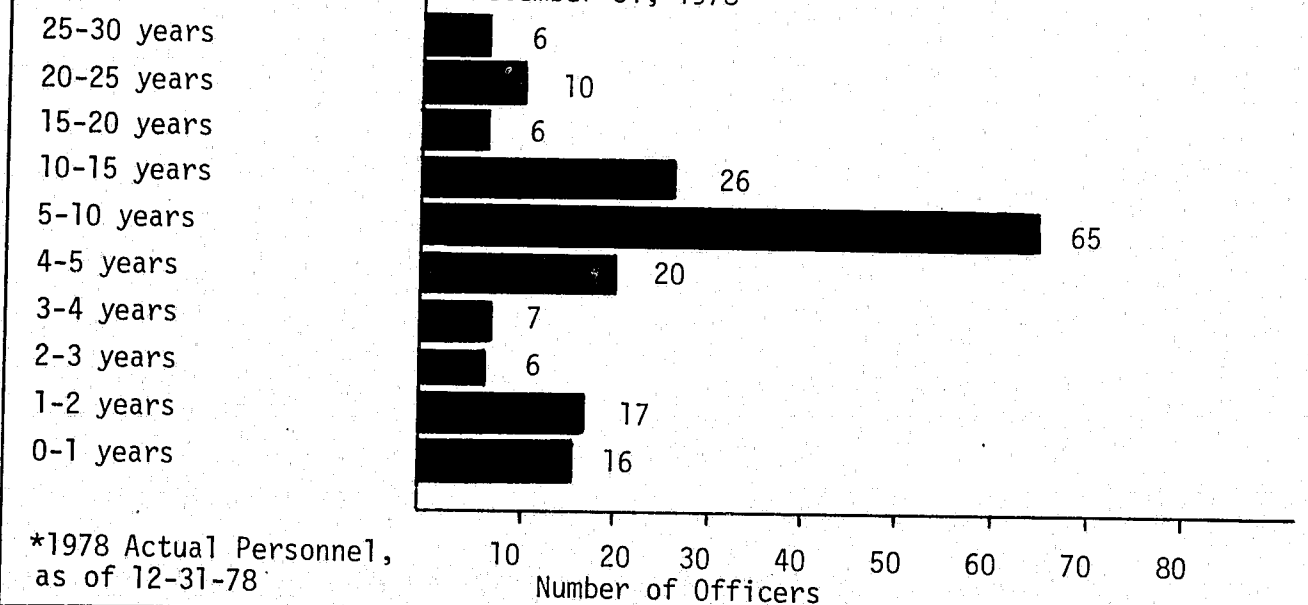
Education of Police Officers
December 31, 1978



Number of Officers
Age Distribution of Police Officers
December 31, 1978



Number of Officers
Experience Level of Police Officers
December 31, 1978



*1978 Actual Personnel,
as of 12-31-78

table 8

SUMMARY OF POLICE PERSONNEL ABSENCES

Days Not Present for Duty Due To:	No. of Days 1978
Regular Days Off.....	18,841
Vacation Days.....	2,010
Holidays.....	843
Illness.....	1,406
Injured in Line of Duty.....	847
Death in Family.....	37
Leaves of Absence.....	21
Absent Without Leave.....	0
Military Leaves of Absence.....	89
Suspension.....	14
Recovery of Overtime.....	2,172

table 9

ANNUAL COMPARISON OF POLICE OVERTIME IN HOURS
1974-1978

Year	Paid Overtime (Holidays not included)	Compensatory Overtime Accrued	Average Hrs. Accrued Per Officer	Compensatory Overtime Recovered	Remaining Accumu- lated Compensatory Overtime
1974	31,609.5	15,053.1	73.4	13,972.8	16,575.0*
1975	18,051.5	17,426.0	90.3	17,640.0	16,361.0
1976	21,739.0	17,438.6	95.3	17,738.2	15,698.3
1977	23,595.0	18,277.6	104.4	15,517.1	20,297.0
1978	19,511.0	15,029.8	83.9	17,277.3	17,329.9

*Corrected 1974 figure.

table 10

CHANGES IN SWORN POLICE PERSONNEL

Calendar Year 1978

Number of Personnel Authorized, January 1.....	182
Number of Personnel Authorized, December 31.....	181
Number of Actual Personnel, January 1.....	174

PERSONNEL ADDITIONS:

Appointed during the year.....	16
Reinstated during the year.....	0
Returned from Military Leave.....	1
Returned from Leave of Absence.....	0

TOTAL ADDITIONS..... 17

PERSONNEL SEPARATIONS:

Voluntary resignation.....	7
Retirement on pension.....	3
Resigned with charges pending.....	0
Resigned in lieu of dismissal.....	0
Resigned, failed recruit probation.....	1
Dismissed for cause.....	0
Killed in line of duty.....	0
Deceased.....	0
Leaves of Absence.....	0
Military Leaves of Absence.....	0
From full time to one-half time.....	1

TOTAL SEPARATIONS..... 12

Number of Actual Personnel, December 31..... 179

table 11
PERSONNEL COMPLAINTS AND PERSONNEL COMMENDATIONS, 1978

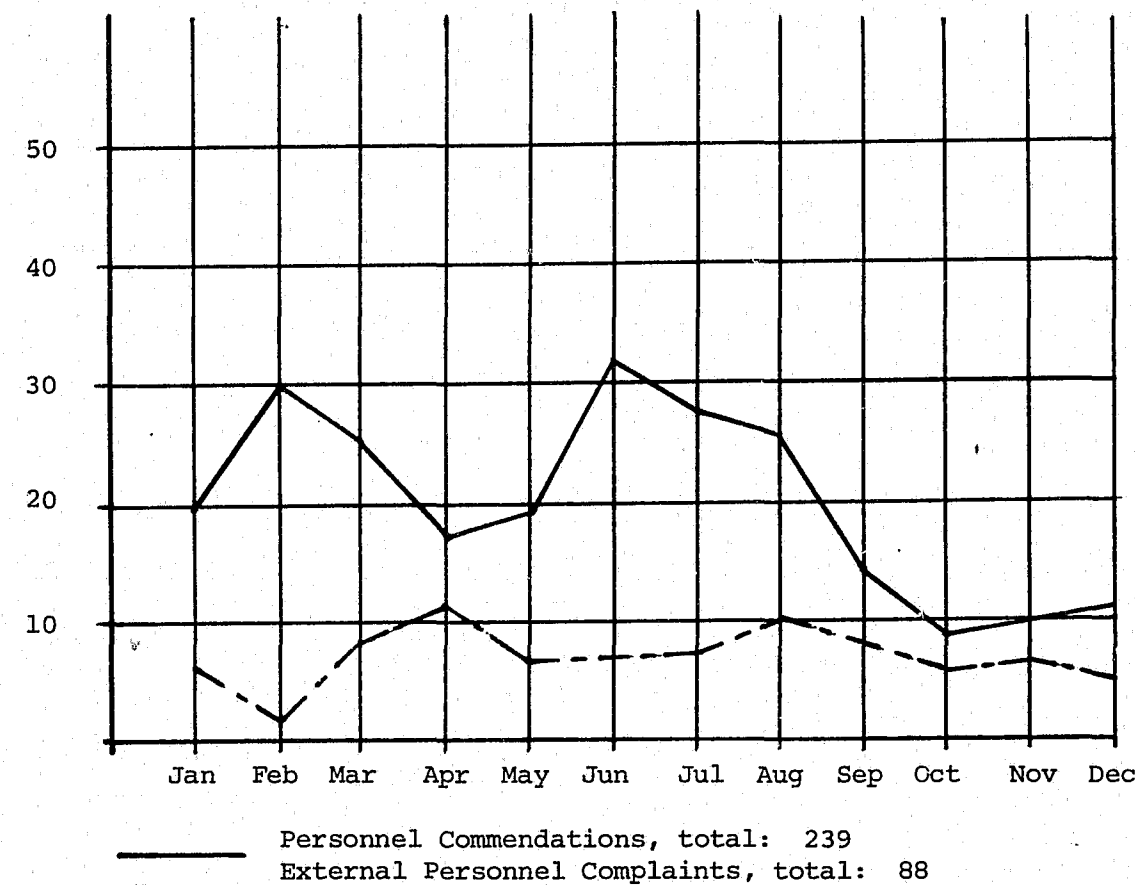


table 12
DISPOSITION OF PERSONNEL COMPLAINTS RECEIVED

	1977	1978
Total External Personnel Complaints Received*	116	133
Total Allegations Investigated**	182	186
Allegations Unfounded (Did not occur)	51	49
Allegations Not Sustained (Unable to determine if occurred)	72	96
Allegations Sustained--Officer's Actions Justified	15	13
Allegations Sustained--Additional Training Given	38	24
Allegations Sustained--Employee Reprimanded	6	4
Allegations Sustained--Employee Suspended	0	0
Allegations Sustained--Employee Terminated	0	0
Complaints Pending at Year End	5	10
Complaints Withdrawn	6	10
Personnel Commendations for Year	379	239

*Total External Complaints Includes PRC Complaints

**Some Complaints contain more than one Allegation.

table 13
ACTIVITY OF BUREAU OF IDENTIFICATION

CRIMINAL FINGERPRINTS

1. Records on File	1977	1978
Fingerprints on file - Beginning of year	95,486	97,695
Fingerprints filed during year	2,539	1,996
Overage and cancelled fingerprint cards removed during year	320	273
Fingerprints on file - End of year	97,695	99,418
2. Identifications made:		
Local arrests identified by this Bureau	3,351	3,712
Local arrests identified by State and Federal Bureaus of Identification	3,082	3,122
Identifications made by fingerprint evidence left at scene of crime	147	257
3. Latent Fingerprint Investigations:		
Latent fingerprint investigations made	3,655	3,712
Hours expended in above investigations	2,728	2,801
Latent fingerprint comparisons made	34,092	36,953
Hours consumed in above comparisons	195	230
Laboratory examinations made	85	105
Articles examined	109	208

PHOTOGRAPHIC WORK

1. Photographs for Investigative Purpose:		
Made of persons arrested	40,328	44,586
Made of persons wanted	2,425	2,176
Made of evidence	15,180	16,032
Made of miscellaneous views	1,490	1,252

MISCELLANEOUS PUBLIC SERVICE

1. Identification inquiries received from outside agencies	6,020	6,125
Passport letters	316	343
Fingerprint cards processed for applicants (schools, etc.)	692	852

table 14			
ACTIVITY OF WARRANT BUREAU			
<hr/>			
<u>B.A.M.C. WARRANTS (Local):</u>	<u>1976</u>	<u>1977</u>	<u>1978</u>
Total on file-Beginning of year	71,544	79,789	68,593
Total assigned during year	32,199	33,693	17,305
Total served during year	20,396	12,276	8,765
Total dismissed during year	3,558	39,280	65,416
Total on file-End of year	79,789	68,593	11,717
 Total Warrants Processed:			
1978 - 17,305			
1977 - 33,693			
1976 - 32,199			
<hr/>			
<u>OUTSIDE WARRANTS:</u>	<u>1976</u>	<u>1977</u>	<u>1978</u>
Total on file-Beginning of year	11,050	16,125	1,537
Total assigned during year	12,178	5,437	2,292
Total served during year	5,385	3,946	3,372
Total returned unserved	1,718	16,079	340
Total on file - End of year	16,125	1,537	117
 Total Warrants Processed (Outside)			
1976 - 12,178	1977 - 5,437	1978 - 2,292	
<hr/>			
<u>TOTAL ALL WARRANTS PROCESSED:</u>			
1976 - 44,377	1977 - 39,130	1978 - 19,597	

table 15				table 16																	
MOTOR VEHICLE COLLISIONS BY TYPE AND CLASSIFICATION				AGE AND SEX OF PERSONS KILLED BY COLLISION CLASSIFICATION																	
MOTOR VEHICLE INVOLVED WITH:	Number of Collisions			Fatal Collisions														Sex M F			
	Prop. Damage or Non- Injury	Injury	Fatal	Age of Persons Killed																	
				All Ages	0 to 4	5 to 9	10 to 14	15 to 19	20 to 24	25 to 34	35 to 44	45 to 54	55 to 64	65 to 74	75 And Over						
1. NON-COLLISION	6	30	0																		
2. PEDESTRIAN	1	113	1												1			1			
3. OTHER MOTOR VEHICLE	1,571	729	1											1			1				
4. MOTOR VEHICLE ON OTHER ROADWAY	26	24	0																		
5. PARKED MOTOR VEHICLE	686	69	1										1					1			
6. TRAIN	1	0	0																		
7. BICYCLE	11	129	2							2							1	1			
8. ANIMAL	15	1	0																		
9. FIXED OBJECT	190	66	0																		
10. OTHER OBJECT	15	12	0																		
11. OTHER	27	22	0																		
12. NOT CODED	937	17	0																		
TOTAL	3,486	1,212	5							2		1	1	1			2	3			

table 17
COMPARISON OF TRAFFIC ENFORCEMENT TO
INJURY AND FATAL COLLISION CAUSES

VIOLATION/CAUSE OF COLLISION	Citations Issued		Type of Collision			
	Number	Percent of Total	Non-Injury	Injury and Fatal	Total	Percent of Total
SPEEDING	4,332	27.51	344	177	521	11.31
TRAFFIC LIGHTS	1,773	11.25	116	85	201	4.36
STOP SIGNS	1,518	9.63	56	46	102	2.21
IMPROPER TURNS	3,354	21.29	610	99	709	15.39
IMPROPER PASSING	41	.26	60	27	87	1.89
WRONG SIDE OF STREET	103	.65	55	17	72	1.56
VIOLATION PEDESTRIAN RIGHT OF WAY	108	.68	2	43	45	.98
IMPROPER SIGNAL	22	.14	1	1	2	.04
VISION OBSCURED	32	.20	0	1	1	.02
RECKLESS DRIVING	10	.06	3	4	7	.15
CUTTING IN	165	1.05	56	6	62	1.34
FOLLOWING TOO CLOSELY	46	.29	218	122	340	7.38
DEFECTIVE BRAKES	7	.04	10	3	13	.28
DEFECTIVE LIGHTS	910	5.78	1	4	5	.11
OTHER IMPROPER DRIVING	2,053	13.04	979	113	1,092	23.74
DRUNK DRIVING	1*	.01	91	53	144	3.12
VIOLATION BY PEDESTRIAN AT INTERSECTION	52	.33	0	19	19	.41
VIOLATION BY PEDESTRIAN NOT AT INTERSECTION	24	.15	0	24	24	.52
VIOLATION AUTO RIGHT OF WAY	227	1.44	625	310	935	20.29
MECHANICAL	179	1.18	57	25	82	1.78
OTHER - NOT DRIVING	790	5.02	115	29	144	3.12
TOTAL	15,747	100.00	3,399	1,208	4,607	100.00

*Citations not normally issued-subjects are arrested/booked.

table 18 ACTIVITY OF PEDESTRIANS KILLED OR INJURED			
ACTIVITY	Fatal	Injured	Total
1. In Crosswalk - at Intersection	1	59	60
2. In Crosswalk - Not At Intersection	0	0	0
3. Crossing - Not in Crosswalk	0	31	31
4. In Road - Includes Shoulder	0	13	13
5. Not in Road	0	10	10
6. Approaching/Leaving School Bus	0	0	0
TOTAL	1	113	114

table 19 MOTOR VEHICLE COLLISION COMPARISON 1977-1978							
YEAR	Total All Collisions	Fatality Collisions	Injury Collisions	Property Damage Only Collisions	Persons Killed	Persons Injured	Citations Issued in Collisions
1974	4,521	12	1,169	3,340	12	1,589	1,188
1975	4,545	6	1,246	3,293	6	1,710	781
1976	4,348	6	1,225	3,125	6	1,641	796
1977	4,242	6	1,193	3,043	7	1,604	491
1978	4,703	5	1,212	3,486	5	1,664	469
Percent Change 1977-1978	+10.8	-16.7	+1.6	+14.6	-28.6	+3.7	-4.5

table 20
CITY OF BERKELEY
CENSUS TRACTS

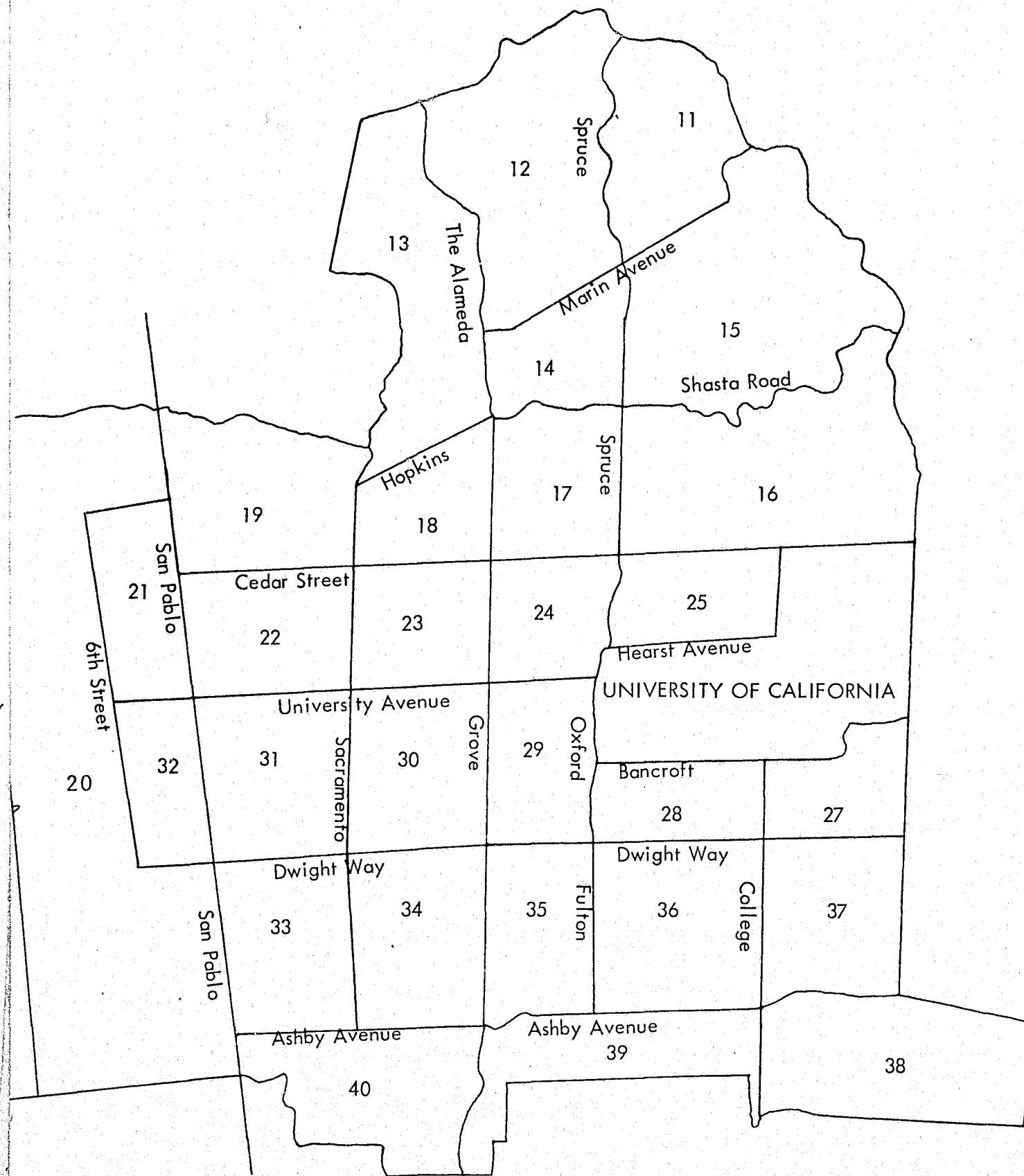


table 21

MAJOR OFFENSES BY CENSUS TRACT - 1978

Census	Homicide	Rape	Robbery	Aggravated Assault	Burglary	Larceny	Auto Theft	Total	% of Total
11	0	0	2	1	40	53	9	105	0.86
12	0	0	1	1	59	76	14	151	1.24
13	0	1	9	4	42	93	20	169	1.39
14	0	0	2	1	24	53	7	87	0.71
15	0	1	2	2	79	135	26	245	2.01
16	1	1	1	2	93	160	27	285	2.34
17	0	1	10	1	71	182	20	285	2.34
18	1	1	4	2	48	69	13	138	1.13
19	1	4	6	4	92	125	17	249	2.04
20	2	6	75	39	228	711	118	1,179	9.68
21	0	4	10	8	83	168	30	303	2.49
22	1	6	22	30	120	179	47	405	3.33
23	0	2	18	7	76	198	34	335	2.75
24	2	4	18	5	102	224	35	390	3.20
25	0	6	5	3	48	118	16	196	1.61
27	0	0	1	5	99	174	27	306	2.51
28	0	3	28	38	111	848	51	1,079	8.86
29	1	4	42	29	165	850	80	1,171	9.61
30	0	6	13	18	126	230	32	425	3.49
31	2	6	30	13	145	231	35	462	3.79
32	1	8	15	34	175	249	53	535	4.39
33	2	1	16	16	89	93	23	240	1.97
34	1	6	18	17	163	119	41	365	3.00
35	0	2	28	11	128	343	49	561	4.61
36	1	5	25	17	209	473	54	784	6.44
37	0	0	6	2	77	97	13	195	1.60
38	1	1	15	3	117	129	20	286	2.35
39	0	3	48	7	134	329	45	566	4.65
40	3	6	43	81	233	228	89	683	5.61
TOTAL	20	88	513	401	3,176	6,937	*1,045	12,180	100.00

*253 of the total are outside recoveries

table 22
CRIME CLOCK

OFFENSE	NUMBER OF OFFENSES	RATE
Homicide/Manslaughter	20	1 every 18.2 days
Rape	88	1 " 4.1 days
Robbery	513	1 " 17.0 hours
Aggravated Assault	401	1 " 21.8 hours
Burglary	3,176	1 " 2.7 hours
Larceny	6,937	1 " 1.2 hours
Vehicle Theft	792	1 " 11.6 hours
Total Major Offenses	11,927	1 " 44.0 minutes
Battery	1,363	1 " 6.4 hours
Arson	28	1 " 13.0 days
Forgery	329	1 " 1.1 days
Fraud	548	1 " 15.9 hours
Receiving Stolen Property	162	1 " 2.2 days
Weapons Offenses	433	1 " 20.2 hours
Sex Offenses	235	1 " 1.5 days
Offenses Against Family	20	1 " 18.2 days
Drug Laws	471	1 " 18.5 hours
Drunk Driving	250	1 " 1.4 days
Liquor Laws	119	1 " 3.0 days
Drunkenness	449	1 " 19.5 hours
Disorderly Conduct	602	1 " 14.5 hours
Vagrancy	321	1 " 1.1 days
Suspicious Circumstances	8,945	1 " 58.7 minutes
Vandalism	2,483	1 " 3.5 hours
Vice	64	1 " 5.7 days
Hazardous Traffic	15,747	1 " 33.4 minutes
Non-Hazardous Traffic	39,559	1 " 13.2 minutes
All Other	49,978	1 " 10.5 minutes
Total Other Offenses	122,106	1 " 4.3 minutes
Total All Offenses	134,033	1 " 3.9 minutes
Misc. Police Activities	14,636	1 " 35.9 minutes
Asst. to Outside Agency	2,507	1 " 3.5 hours
GRAND TOTAL	151,176	1 " 3.5 minutes

table 23
PERCENT OF MAJOR OFFENSES CLEARED BY ARRESTS
COMPARED WITH OTHER UNITED STATES POPULATION CENTERS*

Comparative Population Centers	Year	Murder	Negligent Man-slaughter	Rape	Robbery	Aggravated Assault	Burglary	Larceny	Auto Theft	TOTAL
Berkeley Population 114,081**	1978	45.0	***	46.6	29.2	60.6	9.5	22.0	25.6	20.8
	1977	76.9	100.0	56.3	33.9	83.1	15.2	18.5	22.9	20.6
	1976	83.3	100.0	40.0	34.5	90.8	11.3	18.9	23.0	19.5
	1975	84.6	100.0	38.1	35.3	85.9	15.6	21.2	27.1	22.4
	1974	80.0	85.7	39.0	37.8	80.9	21.6	20.2	32.2	23.7
Average All Pacific States	1977	71.8	***	45.7	28.4	58.1	16.2	21.1	17.6	21.6
	1976	75.8	52.6	46.7	28.6	57.7	16.9	20.3	16.5	21.2
	1975	73.8	62.5	45.3	28.2	59.4	17.7	19.9	16.7	21.1
	1974	78.5	70.2	44.9	30.2	59.6	18.6	18.8	16.7	20.8
	1973	75.3	77.1	45.8	30.4	62.6	19.3	18.4	16.3	20.8
Average of U.S. Cities 50,000 to 100,000 Population	1977	83.6	***	46.4	29.1	59.0	16.6	20.7	16.1	21.3
	1976	85.9	71.4	49.3	30.2	61.6	17.0	19.6	15.8	20.6
	1975	84.7	79.6	48.9	30.7	61.6	17.8	20.5	16.2	21.4
	1974	86.6	80.5	49.8	29.6	62.1	17.8	20.1	16.5	21.3
	1973	80.7	80.9	47.4	28.7	62.4	17.4	19.6	15.9	20.8
Average of U.S. Cities 100,000 to 250,000 Population	1977	79.3	***	52.6	29.8	65.8	17.1	20.2	15.0	21.4
	1976	84.1	84.1	55.5	33.3	71.6	17.8	19.2	16.8	21.4
	1975	81.5	74.8	51.4	31.2	65.8	17.7	19.6	15.1	21.1
	1974	83.1	70.9	50.9	29.4	67.1	17.2	19.0	15.2	20.9
	1973	83.3	76.0	54.9	27.9	67.6	16.4	18.8	14.4	20.4
Average U.S. Cities 250,000 And Over Population	1977	72.6	***	51.4	26.5	60.3	15.7	20.2	11.5	20.7
	1976	75.3	71.3	51.3	24.8	59.3	16.0	18.8	10.7	19.8
	1975	75.7	79.3	50.9	25.4	61.9	17.1	19.5	11.3	20.7
	1974	77.0	77.0	50.6	26.3	60.7	17.8	20.4	11.6	21.4
	1973	76.1	82.4	50.4	26.7	61.8	18.5	20.0	14.1	22.0
Average All U.S. Cities	1977	75.5	***	51.2	26.9	61.8	16.3	20.0	14.6	21.0
	1976	79.0	76.2	52.3	26.9	62.9	16.8	19.1	14.4	20.5
	1975	78.3	79.3	51.3	27.0	63.5	17.5	19.7	14.4	21.0
	1974	79.9	78.0	51.1	27.3	63.4	17.6	19.8	14.6	21.3
	1973	78.7	81.0	51.3	27.2	63.5	17.6	19.3	15.6	21.2

*Source of information: F.B.I. Uniform Crime Reports
 **1970 Census Figure
 ***Information no longer available, statistics now combined under "Murder" category.

table 24

MAJOR CRIME RATE PER 100,000 POPULATION
COMPARED WITH OTHER U.S. POPULATION CENTERS*

Comparative Population Centers	Year	Murder	Negligent Man- slaughter	Rape	Robbery	Aggravated Assault	Burglary	Larceny	Auto Theft	TOTAL
Berkeley	1978	17.5	****	77.1	449.6	351.4	2783.7	6080.2	594.1	10453.9
	1977	11.4	2.6	96.4	433.9	290.1	3257.0	5518.4	584.5	10294.3
Population	1976	10.5	2.6	100.9	523.7	238.6	3269.3	5978.1	713.2	10836.8
	1975	11.4	1.8	92.1	492.1	335.1	3796.5	6190.4	575.4	11594.8
114,081**	1974	8.8	6.1	67.5	470.7	270.8	3853.1	5974.2	534.6	11285.7
Average San Fran- cisco	1977	11.9	****	51.9	378.6	326.5	2255.1	4170.0	745.1	7939.0
	1976	12.2		50.4	420.5	319.3	2458.4	4487.1	745.9	8493.8
Oakland	1975	12.4		48.5	396.5	301.5	2315.7	4283.7	693.9	8052.2
Metropolitan	1974	11.6		42.2	337.1	297.2	2145.9	2946.3	697.2	7477.5
Area***	1973	10.9		44.9	353.3	274.4	2205.6	3643.0	745.6	7277.8
Average of	1977	11.5	****	49.4	287.0	358.0	2139.4	3499.8	663.5	7008.7
	1976	10.3		44.7	275.6	338.7	2174.6	3745.8	644.3	7234.0
State of	1975	10.4		41.6	282.4	321.0	2217.3	3703.7	628.2	7204.6
	1974	9.4		40.6	252.7	307.8	2072.0	3525.5	638.8	6856.8
California	1973	9.0		40.6	240.4	275.8	1979.6	3123.6	635.9	6304.9
Average of U.S. Cities 100,000 to 250,000 Population	1977	22.9	****	52.0	237.6	296.4	1998.4	4369.5	610.4	7556.7
	1976	10.0	2.8	34.9	238.0	289.9	1999.6	4375.7	609.9	7560.8
	1975	10.9	4.3	35.0	282.6	303.1	2177.3	4202.9	687.5	7703.6
	1974	11.7	4.3	34.3	264.9	289.1	2078.8	3719.8	712.4	7115.3
	1973	11.2	4.4	31.2	236.9	265.8	1807.1	3109.0	690.1	6155.7
Average of All U.S. Cities	1977	10.2	****	34.2	262.4	278.1	1612.3	3297.2	572.2	6066.5
	1976	9.9	2.7	30.8	275.9	263.7	1652.1	3561.2	572.4	6368.7
	1975	11.1	3.3	31.7	315.9	269.4	1772.7	3450.2	618.3	6469.5
	1974	11.4	3.3	31.5	303.3	256.7	1680.1	3074.9	607.7	5968.9
	1973	11.1	3.4	29.7	270.2	241.4	1457.1	2598.1	597.3	5208.3
U.S.	1977	9.3	****	30.7	201.9	250.3	1460.0	2816.2	471.3	5239.7
	1976	8.8	0	26.4	195.8	228.7	1439.4	2921.3	446.1	5266.5
TOTAL	1975	9.6	0	26.3	218.2	227.4	1525.9	2804.8	469.4	5281.7
	1974	10.4	4.5	28.4	235.3	228.0	1519.4	2647.6	500.8	5174.4
	1973	9.3	0	24.3	182.4	198.4	1210.8	2051.2	440.1	4116.4

*Source of information: F.B.I. Uniform Crime Reports

**1970 Census Figure

***Alameda, Contra Costa, Marin, San Francisco, and San Mateo Counties

****Information no longer available, statistics now combined under "Murder" category.

table 25

OFFENSES KNOWN AND ARRESTS

BERKELEY, CALIFORNIA

	1975		1976		1977		1978	
	off.	arr.	off.	arr.	off.	arr.	off.	arr.
Murder	13	15	12	10	13	19	16	8
Negligent Manslaughter	2	2	3	2	3	3	4	3
Rape	105	33	115	48	110	54	88	39
Robbery	561	214	597	209	495	104	513	148
Assault (Aggravated)	382	313	272	228	331	209	401	219
Burglary	4,328	554	3,727	434	3,716	457	3,176	366
Larceny-Theft	7,057	1,344	6,815	1,078	6,296	912	6,937	1,271
Auto Theft	770	201	813	146	781	128	792	129
TOTAL MAJOR OFFENSES	13,218	2,676	12,354	2,155	11,745	1,886	11,927	2,183
Other Offenses								
Battery	770	308	840	246	876	260	1,363	309
Arson	*	*	41	6	38	9	28	14
Forgery	342	75	235	49	329	24	329	41
Fraud	459	23	532	31	409	15	548	19
Receiving Stolen Property	176	117	130	107	122	101	162	89
Weapons Offenses	434	199	378	168	312	95	433	119
Sex Offenses	197	31	205	24	161	26	235	36
Offenses Against Family	20	3	23	9	23	2	20	10
Drugs	559	346	595	311	523	280	471	232
Drunk Driving	328	373	315	302	360	341	250	234
Liquor Laws	250	57	132	46	122	21	19	18
Drunkenness	349	333	314	258	297	245	449	362
Disorderly Conduct	410	35	343	87	345	15	602	55
Gambling	18	15	25	39	10	6	8	5
Vagrancy	217	52	342	65	412	93	321	52
Suspicious Circumstances	805	0	628	0	4,298	0	**8,945	0
Miscellaneous Felony	*	*	71	11	61	35	80	11
Miscellaneous Misdemeanor	*	*	644	*	627	344	712	0
Vandalism	2,564	229	2,189	263	2,148	213	2,483	248
City Ordinance	*	*	5,083	*	552	83	505	0
Welfare & Institutions Code	*	*	415	406	394	334	330	320
Vice	17	19	188	186	303	316	64	61
Federal Felonies	*	*	56	17	24	15	24	3
Hazardous Traffic	50,476	18,991	17,751	17,894	16,918	16,753	15,747	15,649
Non-Hazardous Traffic	#	#	54,546	7,841	39,269	1,337	39,559	1,770
All Other Offenses	9,358	1,806	40,079	1,339	47,919	2,087	48,095	1,147
TOTAL OTHER OFFENSES	67,759	23,013	126,101	29,705	116,852	23,050	122,106	20,804
GRAND TOTAL OFFENSES	80,977	25,688	138,455	31,860	128,597	24,936	134,033	22,987

*Included in All Other Offenses

#Included in Hazardous Traffic

**Increase due to improved reporting system

table 26						
MAJOR OFFENSES KNOWN TO AND CLEARED BY POLICE						
MAJOR OFFENSES	OFFENSES REPORTED	UNFOUNDED	ACTUAL	CLEARED BY ARREST	CLEARED OTHER	TOTAL CLEARED
1. Homicide						
Total	21	1	20	5	4	9
Murder	16	0	16	4	2	6
Manslaughter	5	1	4	1	2	3
2. Rape						
Total	88	0	88	29	12	41
Completed	59	0	59	17	11	28
Attempted	29	0	29	12	1	13
3. Robbery						
Total	514	1	513	142	8	150
Armed	348	0	348	93	1	94
Strong Armed	166	1	165	49	7	56
4. Assault, Aggravated						
Total	402	1	401	152	91	243
Firearm	56	0	56	24	8	32
Cut	84	1	83	42	25	67
Other Weapon	167	0	167	76	56	132
On Police	95	0	95	10	2	12
5. Burglary						
Total	3,186	10	3,176	270	32	302
Force	1,746	6	1,740	151	22	173
No Force	1,151	3	1,148	97	9	106
Attempt	289	1	288	22	1	23
6. Theft						
Total	7,009	72	6,937	1,301	266	1,527
\$200 - Over	483	0	483	27	17	44
\$50 - \$199	1,820	1	1,819	72	22	94
Under \$50	4,706	71	4,635	1,202	187	1,389
7. Auto Theft*						
Total	827	35	792	153	50	203
TOTAL MAJOR OFFENSES	12,047	120	11,927	2,052	423	2,475

*Does not include 253 outside auto recoveries

table 26 (continued)						
OTHER OFFENSES KNOWN TO AND CLEARED BY POLICE						
MISCELLANEOUS CLASSIFICATIONS						
OTHER OFFENSES	Offenses Reported	Unfounded	Actual Offenses	Cleared by Arrest	Cleared Other- wise	Total Cleared
8. Battery	1,364	1	1,363	432	707	1,139
9. Arson	28	0	28	9	0	9
10. Forgery	329	0	329	197	22	219
11. Fraud	549	1	548	214	132	346
12. Receiving Stolen Property	165	3	162	135	18	153
13. Weapons Offenses	434	1	433	288	106	394
14. Sex Offenses	235	0	235	83	25	109
15. Offense Against Family	20	0	20	10	9	19
16. Drugs	471	0	471	431	31	462
17. Drunk Driving	251	1	250	238	9	247
18. Liquor Laws	120	1	119	118	0	118
19. Drunkenness	449	0	449	435	13	448
20. Disorderly Conduct	605	3	602	145	267	412
21. Gambling	8	0	8	7	1	8
22. Vagrancy	321	0	321	136	19	155
23. Suspicious Circumstances	8,945	0	8,945	0	8,934	8,934
24. Miscellaneous Felony	80	0	80	43	9	52
25. Misc. Misdemeanor	714	2	712	361	299	660
26. Vandalism	2,487	4	2,483	346	308	654
27. City Ordinance	505	0	505	76	398	474
28. Welfare-Institutions Code	334	4	330	280	47	327
29. Commercialized Vice	64	0	64	63	1	64
30. Federal Laws	25	1	24	3	20	23
31. Hazardous Traffic Custody	374	1	373	170	124	294
32. Non-Haz. Traffic Custody	1,778	0	1,778	2	1,768	1,770
33. All Other	46,230	62	46,168	1,155	42,620	43,775
TOTAL OTHER OFFENSES	66,885	85	66,800	5,377	55,888	61,265
TOTAL MAJOR OFFENSES	12,047	120	11,927	2,052	423	2,475
GRAND TOTAL	78,932	205	78,727	7,429	56,311	63,740

table 27
AGE, SEX, AND RACE OF ADULTS ARRESTED
18 Years of Age and Over

	18		19		20		21		22		23		24		25-29		30-34	
	M	F	M	F	M	F	M	F	M	F	M	F	M	F	M	F	M	F
Murder	0	0	0	1	0	0	0	0	0	0	0	0	0	1	5	0	0	0
Neg. Manslaughter	0	0	0	0	0	0	1	0	0	0	0	0	0	0	0	0	0	0
Rape	3	0	2	0	2	0	2	0	2	0	2	0	0	0	10	0	8	0
Robbery	7	1	3	0	6	0	6	0	10	1	7	1	9	0	21	3	8	1
Aggravated Assault	6	1	4	1	6	1	15	0	9	2	7	1	14	0	36	6	34	7
Burglary	29	2	19	0	10	1	12	2	15	1	12	3	11	2	41	10	33	4
Larceny	60	24	32	7	34	15	35	16	35	10	31	16	28	11	159	42	57	32
Auto Theft	10	1	3	0	4	0	4	0	8	0	0	1	3	0	5	0	5	0
Battery	10	0	6	0	5	1	17	0	15	1	6	0	4	0	57	3	32	6
Forgery	1	0	1	2	2	1	1	0	3	3	1	0	1	0	10	3	2	1
Checks & Fraud	0	0	0	0	2	0	0	1	0	0	0	2	0	0	2	2	3	0
Stolen Property	5	0	4	0	3	0	3	0	4	0	2	0	4	0	20	3	5	1
Weapons	3	0	3	0	1	0	2	0	6	0	5	1	9	0	15	1	19	3
Sex Offenses	0	0	1	0	1	0	0	0	1	0	1	0	2	0	13	0	8	0
Offenses vs Family	0	0	0	0	0	0	0	1	0	0	0	0	1	0	1	2	1	0
Drug Laws	4	4	10	3	14	2	11	1	11	1	8	5	7	0	46	12	26	6
Liquor Laws	1	0	1	0	3	0	0	0	0	1	1	0	0	0	4	1	2	0
Drunkenness	1	1	4	1	6	0	11	1	11	1	11	2	7	0	80	15	57	6
Disorderly Conduct	2	0	2	0	4	0	0	0	2	0	1	0	2	1	6	1	9	1
Vagrancy	3	0	2	0	2	0	3	1	0	0	1	0	1	0	8	2	8	0
Gambling	0	0	0	0	0	0	0	0	1	0	0	0	1	0	3	0	0	0
Drunk Driving	4	0	5	2	3	0	13	0	3	1	14	0	4	2	30	4	27	8
Prostitution & Vice	0	3	0	6	0	5	0	6	0	8	0	8	0	4	0	11	1	3
Vandalism	9	0	7	0	4	1	4	0	11	0	11	0	9	1	37	4	34	4
All Others	34	3	40	8	47	3	63	10	55	7	45	5	44	9	207	28	124	13
TOTAL, except traffic	192	40	149	31	159	30	203	39	202	37	166	45	161	31	816	153	503	96
Traffic Arrest	12	1	36	4	31	2	48	2	47	4	36	4	36	6	182	13	108	10
GRAND TOTAL All Offenses	204	41	185	35	190	32	251	41	249	41	202	49	197	37	998	166	611	106

table 27 (continued)
AGE, SEX AND RACE OF ADULTS ARRESTED
18 Years of Age and Over

CLASSIFICATION OF OFFENSES	35-39		40-44		45-49		50-54		55-59		60-64		65 & Over		TOTAL		RACE		
	M	F	M	F	M	F	M	F	M	F	M	F	M	F	M	F	WHITE	NEGRO	OTHER
Murder	0	0	0	0	0	0	0	0	0	0	0	0	0	0	6	2	3	4	1
Neg. Manslaughter	1	0	0	0	1	0	0	0	0	0	0	0	0	0	3	0	0	3	0
Rape	2	0	1	0	2	0	0	0	0	0	0	0	0	0	36	0	8	26	2
Robbery	4	0	1	0	1	0	0	0	0	0	0	0	0	0	83	7	10	78	2
Aggravated Assault	18	2	5	5	4	1	1	3	2	0	0	0	1	1	162	31	58	126	9
Burglary	13	2	4	0	2	0	1	0	1	0	0	0	0	0	203	27	57	164	9
Larceny	32	18	17	5	14	12	4	3	6	2	4	1	1	4	549	218	301	396	70
Auto Theft	8	1	2	0	1	0	0	0	0	0	0	0	0	0	53	3	18	35	3
Battery	21	3	14	1	5	0	7	0	4	0	2	0	2	0	207	15	80	127	15
Forgery	1	1	0	0	1	0	0	0	0	0	0	0	0	0	24	11	15	20	0
Checks & Fraud	1	1	3	0	0	1	0	0	0	0	0	0	0	0	11	7	6	12	0
Stolen Property	5	0	1	0	2	0	0	0	0	0	0	0	0	0	58	4	16	44	2
Weapons	13	1	5	1	4	1	3	1	1	0	0	0	5	0	94	9	33	65	5
Sex Offenses	0	0	4	0	0	0	0	0	2	0	0	0	0	0	33	0	18	13	2
Offenses vs Family	3	0	1	0	0	0	0	0	0	0	0	0	0	0	7	3	2	8	0
Drug Laws	11	3	7	0	2	0	1	0	1	1	0	0	1	0	160	38	88	101	9
Liquor Laws	0	0	0	0	0	0	1	0	0	0	0	0	0	0	13	2	6	7	2
Drunkenness	49	5	19	2	13	1	23	0	16	2	5	0	4	0	317	37	192	124	38
Disorderly Conduct	7	0	3	0	1	0	1	0	0	0	0	0	0	0	40	3	14	29	0
Vagrancy	2	0	0	0	2	0	1	0	0	0	0	0	1	0	34	3	15	21	1
Gambling	0	0	0	0	0	0	0	0	0	0	0	0	0	0	5	0	0	5	0
Drunk Driving	26	0	20	1	16	0	11	7	16	0	6	2	3	0	201	27	128	81	19
Prostitution & Vice	0	2	0	0	1	0	0	0	0	0	1	0	0	0	3	56	37	19	3
Vandalism	14	3	3	0	1	0	2	0	1	0	0	0	1	1	148	14	89	58	15
All Others	63	7	27	2	13	0	13	1	6	0	2	0	3	0	786	96	288	556	38
TOTAL, except traffic	294	49	137	17	86	16	69	15	56	5	21	3	22	6	3236	613	1,482	2,122	245
Traffic Arrest	50	6	20	0	12	0	7	3	3	0	3	0	3	0	634	55	192	459	38
GRAND TOTAL All Offenses	344	55	157	17	98	16	76	18	59	5	24	3	25	6	3870	668	1,674	2,581	283

table 28
AGE, SEX AND RACE OF JUVENILES DETAINED

OFFENSE	SEX	10 AND UNDER	11-12	13-14	15	16	17	TOTAL UNDER 18	CAU.	NEGRO	OTHER
1. a. MURDER	M	0	0	0	0	0	0	0	0	0	0
	F	0	0	0	0	0	0	0	0	0	0
b. MANSLAUGHTER	M	0	0	0	0	0	0	0	0	0	0
	F	0	0	0	0	0	0	0	0	0	0
2. FORCIBLE RAPE	M	0	0	0	0	0	3	3	0	3	0
	F	0	0	0	0	0	0	0	0	0	0
3. ROBBERY	M	1	5	6	7	12	19	50	5	38	7
	F	0	2	3	1	2	0	8	0	5	3
4. AGGRAV. ASSAULT	M	2	1	4	2	6	5	20	3	14	3
	F	0	0	2	1	1	2	6	1	1	4
5. BURGLARY	M	10	5	31	26	25	31	128	39	76	13
	F	0	1	3	3	0	1	8	5	3	0
6. LARCENY	M	23	36	98	72	88	63	380	128	216	36
	F	5	14	44	17	24	20	124	61	56	7
7. AUTO THEFT	M	0	0	20	16	16	18	70	27	38	5
	F	0	0	1	12	0	0	3	1	2	0
8. BATTERY	M	7	9	16	10	13	20	75	7	61	7
	F	1	3	3	4	0	1	12	0	9	3
9. FORGERY & FRAUD	M	0	0	1	1	1	2	5	4	1	0
	F	0	0	1	0	0	1	2	0	2	0
10. STOLEN PROPERTY	M	0	6	5	9	3	3	26	1	20	5
	F	0	0	0	0	0	1	1	1	0	0
11. VANDALISM	M	13	16	13	11	18	7	78	35	38	5
	F	3	2	2	1	0	0	8	3	5	0
12. WEAPONS	M	0	2	3	6	2	3	16	3	8	5
	F	0	0	0	0	0	0	0	0	0	0
13. SEX OFFENSES	M	0	1	0	0	0	2	3	0	3	0
	F	0	0	0	0	0	0	0	0	0	0
14. DRUG LAWS	M	0	0	4	5	8	13	30	8	20	2
	F	0	0	0	1	0	3	4	2	0	2
15. GAMBLING	M	0	0	0	0	0	0	0	0	0	0
	F	0	0	0	0	0	0	0	0	0	0
16. ARSON	M	7	1	1	1	0	0	10	4	6	0
	F	0	0	0	0	0	0	0	0	0	0
17. DRUNK DRIVING	M	0	0	0	0	0	4	4	4	0	0
	F	0	0	0	0	2	0	2	2	0	0
18. LIQUOR LAWS	M	0	0	0	0	1	1	2	1	1	0
	F	0	0	0	0	1	0	1	1	0	0
19. DRUNKENNESS	M	0	0	0	1	2	3	6	3	2	1
	F	0	0	0	1	1	0	2	1	0	1
20. DISORDER. COND.	M	0	0	3	2	2	2	9	2	7	0
	F	0	0	1	0	1	1	3	3	0	0
21. VAGRANCY	M	1	4	4	0	0	6	15	3	11	1
	F	0	0	0	0	0	0	0	0	0	0
22. RUNAWAYS	M	8	9	27	18	15	10	87	31	55	1
	F	3	5	45	46	22	20	141	60	66	15
23. ALL OTHERS	M	38	4	19	19	26	24	130	52	71	7
	F	28	3	13	10	9	15	78	21	50	7
TOTALS	M	110	99	255	206	238	239	1,147	360	689	98
	F	40	30	118	87	63	65	403	162	199	42

table 29
ADULT CRIMINAL CHARGES AND DISPOSITIONS

Offenses by Classification	Persons Charged				Disposition*				
	Arrested	Arrested Via Citation	Released No Complaint	Hold for Prosecution**	Adults Guilty		Acquitted or Dismissed	Referred to Juvenile Ct. or Juvenile Bureau	Pending or Released to Other Juris- diction
					As Charged	Of Lesser Offense			
1. a. Murder	8	0	0	8	2	1	2	0	3
b. Manslaughter	3	0	0	2	0	1	1	0	1
2. Rape	36	0	6	29	14	8	12	0	-3
3. Robbery	90	0	11	77	31	23	20	0	5
4. Aggravated Assault	193	0	38	149	40	78	41	0	-3
5. Burglary	230	0	26	196	73	95	42	0	-1
6. Larceny	375	392	69	669	171	160	293	0	74
7. Auto Theft	56	0	14	38	6	11	15	0	13
TOTAL MAJOR	991	392	164	1168	337	377	426	0	89
8. Battery	169	53	72	146	48	43	56	0	3
9. Arson	4	0	1	3	0	0	1	0	2
10. Forgery	35	0	1	27	7	16	4	0	7
11. Fraud	18	0	0	17	6	9	3	0	0
12. Weapons Offenses	81	22	20	83	40	18	22	0	3
13. Receiving Stolen Property	61	1	24	36	15	10	12	0	3
14. Sex Offenses	30	3	6	26	10	10	6	0	2
15. Offenses vs Family	10	0	1	5	2	0	0	0	7
16. Drug Offenses	188	10	39	135	49	30	57	1	22
17. Drunk Driving	221	7	12	203	175	42	7	0	-8
18. Liquor Laws	13	2	2	12	1	1	0	0	-1
19. Drunkenness	295	59	111	237	186	9	38	0	15
20. Disorderly Conduct	40	3	18	23	10	3	9	0	3
21. Gambling	3	2	1	4	4	0	0	0	0
22. Vagrancy	35	2	17	18	7	5	4	0	5
23. Vandalism	139	23	36	121	59	17	33	0	18
24. Vice	58	1	3	52	15	30	12	0	-1
ALL OTHER OFFENSES	1514	53	93	1016	813	51	168	0	442
TOTAL OTHER	2914	241	456	2164	1,459	294	432	1	522
TOTAL ALL OFFENSES	3905	633	621	3,332	1,796	671	858	1	611

*Includes dispositions of cases pending prior to 1977.

**Does not include those released from other jurisdictions.

table 30

DISPOSITION OF JUVENILE OFFENDERS - BY OFFENSE

OFFENSE	JUVENILE JUSTICE SYSTEM						COMMUNITY TREATMENT PROGRAMS								TOTALS	
	Detained Juvenile Hall		Notice to Appear		Referred Justice Agency		Counseled and Released		Teacher Program		Community Diversion		Supervision Program			
	Boys	Girls	Boys	Girls	Boys	Girls	Boys	Girls	Boys	Girls	Boys	Girls	Boys	Girls	Boys	Girls
RAPE (FORCIBLE)	3	0	0	0	0	0	0	0	0	0	0	0	0	0	3	0
UNLAWFUL INTERCOURSE	0	0	0	0	0	0	0	0	0	0	0	0	0	0	0	0
ROBBERY	29	4	17	4	2	0	2	0	0	0	0	0	0	0	50	8
ASSAULT (AGGRAVATED)	10	4	10	1	0	0	2	0	0	0	0	0	0	0	22	5
ASSAULT (OTHER)	10	1	31	3	9	0	22	4	10	2	4	3	2	0	88	13
BURGLARY	68	1	24	3	10	0	14	1	1	0	3	1	7	2	127	8
GRAND THEFT	7	3	8	4	0	0	0	1	2	0	0	0	0	0	17	8
PETTY THEFT	39	14	63	8	13	2	118	70	93	18	3	2	22	2	351	116
AUTO THEFT	39	2	11	0	10	0	7	0	0	0	0	0	5	1	72	3
STOLEN PROPERTY	7	0	12	2	0	0	8	0	1	0	2	0	0	0	30	2
WEAPONS LAWS	3	0	0	0	1	0	6	0	2	0	0	0	1	0	13	0
SEX (ALL OTHER)	3	1	1	1	1	0	1	0	0	0	0	0	0	0	6	2
RUNAWAY	12	40	1	0	24	24	28	51	7	2	12	17	4	4	88	138
BEYOND CONTROL	10	11	0	0	2	1	9	5	0	0	1	1	0	1	22	19
NARCOTICS AND RELATED OFFENSES	17	3	4	1	4	0	8	0	0	0	0	0	2	0	35	4
LIQUOR LAWS	1	1	2	0	4	1	2	1	1	0	0		0	0	10	3
ARSON	2	0	2	0	1	0	2	1	1	0	1	0	1	0	10	0
MALICIOUS MISCHIEF	4	0	5	0	6	2	40	3	19	0	2	0	3	0	79	5
DISTURBING THE PEACE	1	1	3	0	1	0	2	2	1	0	0	0	1	0	9	3
GAMBLING	0	0	0	0	0	0	0	0	0	0	0	0	0	0	0	0
DRUNK DRIVING	0	0	1	2	3	0	0	0	0	0	0	0	0	0	4	2
SCHOOL LOITERING	3	0	1	0	0	0	0	0	0	0	0	0	0	0	4	0
ALL OTHER OFFENSES	18	8	13	3	19	6	21	6	3	0	1	2	1	0	76	25
TOTALS	286	94	209	32	110	36	292	144	141	22	29	26	49	10	1,116	364
	380		241		146		436		163		55		59		1480	

table 31

RESIDENCE DATA ON PERSONS ARRESTED FOR CERTAIN OFFENSES

- Adult & Juvenile -

	Berkeley Residents	Persons not Residing In Berkeley	Total Arrested	In County Less Than One Year	In State Less Than One Year
Murder	2	6	8	4	0
Negligent Manslaughter	3	0	3	0	0
Rape	16	23	39	8	2
Robbery	63	85	148	35	15
Aggravated Assault	147	72	219	61	43
Burglary	213	153	366	80	49
Larceny	604	667	1,271	410	197
Auto Theft	69	60	129	45	24
Gambling	3	2	5	0	0
Forgery and Fraud	22	38	60	24	8
Weapons	61	58	119	36	17
Sex Offenses	19	17	36	14	7
Drug Laws	105	127	232	67	36
Drunk Driving	100	134	234	87	46
Liquor Laws	7	11	18	8	2
Disorderly Conduct	36	19	55	15	7
Vagrancy	31	21	52	16	6
Drunkenness	131	231	362	182	145
Offenses vs Family	6	4	10	1	0
Other	1,402	1,320	2,722	811	425
TOTAL	3,040	3,048	6,088	1,904	1,029

table 32
AUTO THEFT AND RECOVERIES

	1974	1975	1976	1977	1978
Autos Reported Stolen in Berkeley	724	770	813	808	818
Autos Recovered in Berkeley	306	331	285	340	350
Autos Recovered by Outside Departments	259	246	280	246	316
Autos Stolen Outside Recovered in Berkeley	218	262	242	242	253
Percent of Local Stolen Autos Recovered	78.0	74.9	69.6	72.5	81.9
CONDITION OF IGNITION SYSTEM					
Key left in auto or no key needed	172	163	180	168	208
Ignition Shorted	372	385	363	372	421
Unknown or attempt	21	29	22	46	37
TOTALS	565	577	565	586	666

table 33
VALUE OF PROPERTY REPORTED STOLEN AND AMOUNT RECOVERED
BY KIND OF PROPERTY*

Kind of Property	Amount Stolen	Amount Recovered	% Amount Recovered	No. of Cases Where Property Stolen	No. of Cases Where Property Recovered
Currency	\$ 289,938	\$ 19,566	6.75%	1,765	282
Jewelry	212,735	4,570	2.15%	402	102
Furs/Cloth	65,459	10,143	15.50%	471	198
Off. Equip.	60,572	9,520	15.72%	155	21
Household	91,477	26,047	28.47%	125	18
Consumables	5,259	1,423	27.07%	263	189
TV/Radio	433,866	27,082	6.24%	1,778	157
Guns	7,669	901	11.74%	65	13
Misc.	325,570	36,710	11.27%	5,688	1,024
Livestock	0	0	0	0	0
Autos**	488,394	412,165	84.39%	814	329
TOTAL	\$1,980,939	\$548,127	27.67%	11,526	2,333

*Offenses included are: Homicide, Rape, Robbery, Burglary, Larceny and local stolen/recovered autos.

**Includes local stolen/recovered and vehicles taken during commission of another crime/outside recoveries not included.

table 34
VALUE OF PROPERTY REPORTED STOLEN
AND AMOUNTS RECOVERED BY TYPE OF OFFENSE

OFFENSE	STOLEN PROPERTY		RECOVERED PROPERTY	
	Number of cases	Value	Number of cases	Value
HOMICIDE	20	\$ 3,675	1	\$ 3,300
RAPE	88	4,475	5	2,639
ROBBERY				
Stores and Shops	165	66,755	21	23,857
Residence	53	33,568	10	15,073
Bank	16	23,953	3	7,706
Other*	279	35,158	45	19,269
TOTAL	513	159,434	79	65,905
BURGLARY				
Residence (Day)	1,511	377,202	130	18,630
(Night)	701	225,510	96	12,167
Commercial (Day)	715	174,630	49	10,605
(Night)	249	58,986	55	24,422
TOTAL	3,176	836,328	330	65,824
LARCENY				
Purse Snatch	68	6,039	18	189
Pick Pocket	46	5,514	14	78
Shoplift	1,253	43,376	966	9,798
From Auto	1,951	183,889	182	13,490
Auto Accessories	663	32,703	17	383
Bicycles	621	41,266	77	4,946
Coin Operated Machines	48	1,564	2	240
From Buildings	1,866	155,579	287	11,352
Other	421	72,626	45	4,748
TOTAL	6,937	542,556	1,608	45,224
AUTO THEFT				
Local	792	434,471	310	365,235
Outside	-	-	161	208,491
TOTAL	792	434,471	471	573,726
GRAND TOTAL	11,526	\$1,980,939	2,494	\$756,618

*Other category includes: Street, Service Station, Offices, other Buildings

table 35													
PERSONS REPORTED MISSING													
Why Missing	Under 10 Years		10 to 19 Years		20 to 29 Years		30 to 39 Years		40 to 49 Years		50 And Over		Total
	M	F	M	F	M	F	M	F	M	F	M	F	
Chronic Drinking	0	0	0	0	0	0	0	0	0	0	0	0	0
Family Trouble	0	0	1	1	1	0	0	0	0	0	0	0	3
Senility or Mental Disturbance	2	0	11	0	1	2	2	1	0	2	32	22	75
Small Children Lost	15	13	1	1	0	0	0	0	0	0	0	0	30
Juvenile Runaway	12	4	108	121	0	0	0	0	0	0	0	0	245
Spent Time with Friend	14	4	11	13	9	9	2	2	2	0	0	0	66
Delayed, etc.	0	0	0	0	0	0	0	0	0	0	0	0	0
Runaways & Married	0	0	0	0	0	0	0	0	0	0	0	0	0
Found Dead	0	0	0	0	0	2	1	0	0	0	0	0	3
Unfounded Not Stated	0	0	0	0	0	0	0	0	0	0	0	0	0
Arrested Elsewhere	0	0	0	0	1	0	0	0	0	0	0	0	1
Sick, Despondent, etc.	0	0	0	2	2	0	0	0	0	0	2	1	7
Still Missing	0	0	0	0	3	1	0	0	0	0	0	0	4
TOTALS	43	21	132	138	17	14	5	3	2	2	34	23	434

table 36						
SUICIDES AND ATTEMPTS						
	Attempts			Fatal		
	Male	Female	Total	Male	Female	Total
Jump	2	0	2	0	0	0
Cutting or Piercing	12	12	24	0	0	0
Drowning or Submersion	0	1	1	0	0	0
Gas	2	0	2	0	0	0
Hanging	1	2	3	1	0	1
Poisons	2	2	4	0	0	0
Overdose	9	32	41	1	2	3
Firearms	1	3	4	4	1	5
Other	0	0	0	0	0	0
TOTALS	29	52	81	6	3	9

END