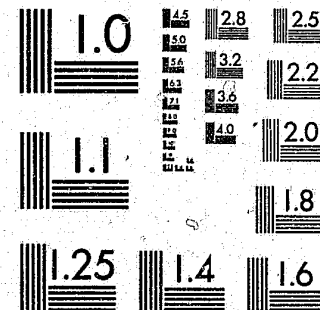


National Criminal Justice Reference Service

ncjrs

This microfiche was produced from documents received for inclusion in the NCJRS data base. Since NCJRS cannot exercise control over the physical condition of the documents submitted, the individual frame quality will vary. The resolution chart on this frame may be used to evaluate the document quality.



MICROCOPY RESOLUTION TEST CHART
NATIONAL BUREAU OF STANDARDS-1963-A

Microfilming procedures used to create this fiche comply with the standards set forth in 41CFR 101-11.504.

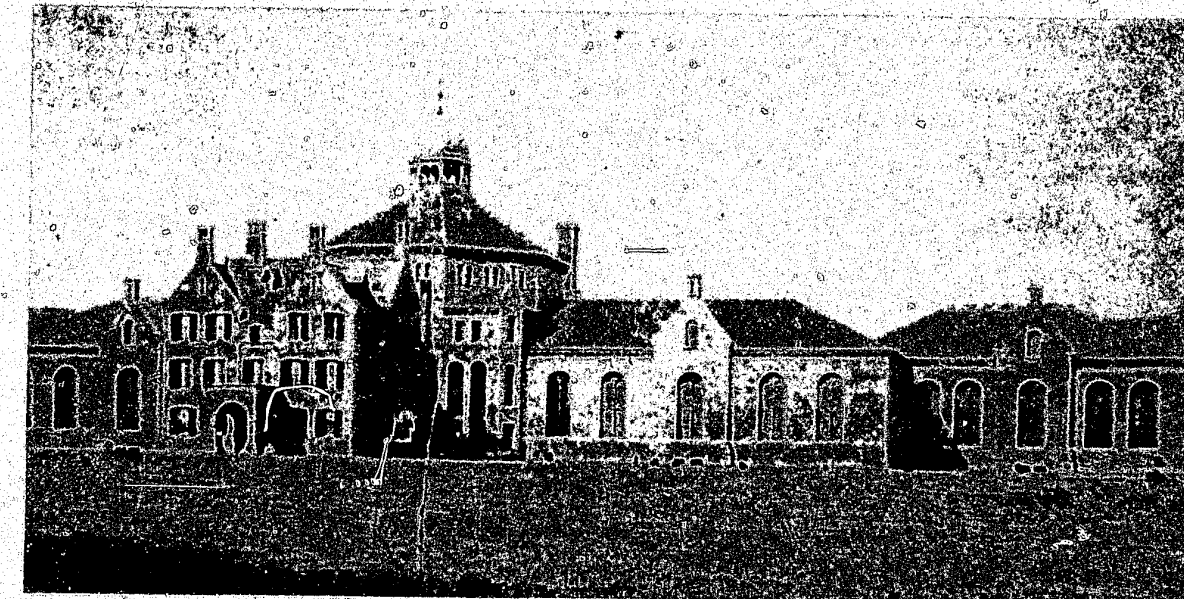
Points of view or opinions stated in this document are those of the author(s) and do not represent the official position or policies of the U. S. Department of Justice.

National Institute of Justice
United States Department of Justice
Washington, D. C. 20531

Date Filmed

2/13/81

**SUBSTANCE ABUSE
BY
INMATES OF THE RHODE ISLAND
ADULT CORRECTIONAL INSTITUTION
ON
JUNE 21, 1978**



PREPARED BY:

WALTER J. FONTAINE
SENIOR RESEARCH TECHNICIAN
RESEARCH & PLANNING UNIT
RHODE ISLAND DEPARTMENT
OF CORRECTIONS

APPROVED BY:

JOHN J. MORAN
DIRECTOR
RHODE ISLAND DEPARTMENT
OF CORRECTIONS

DATE: MAY, 1980

70878

SUBSTANCE ABUSE
BY
INMATES OF THE RHODE ISLAND
ADULT CORRECTIONAL INSTITUTION
ON
JUNE 21, 1978

PREPARED BY:

WALTER J. FONTAINE
SENIOR RESEARCH TECHNICIAN
RESEARCH & PLANNING UNIT
RHODE ISLAND DEPARTMENT
OF CORRECTIONS

APPROVED BY:

JOHN J. MORAN
DIRECTOR
RHODE ISLAND DEPARTMENT
OF CORRECTIONS

DATE: MAY, 1980

TABLE OF CONTENTS

	PAGE
INTRODUCTION.....	1-3
EXTENT OF SUBSTANCE ABUSE.....	4
TYPE OF SUBSTANCE ABUSE.....	5-6
AGE AND SUBSTANCE ABUSE.....	7-9
RACE AND SUBSTANCE ABUSE.....	10
SUBSTANCE ABUSE AND TYPE OF OFFENSE.....	11-14
SUBSTANCE ABUSE AND RECIDIVISM STATUS.....	15-16
SUBSTANCE ABUSE AND JUVENILE EXPERIENCE.....	17
SUBSTANCE ABUSE AND LENGTH OF SENTENCE.....	18-21
STATISTICAL TABLES.....	22-38

INTRODUCTION

This report as the title suggests is an in-depth study of the extent and type of substance abuse by inmates at the Rhode Island Adult Correctional Institution. The cohort for this study is the sentenced population of the Adult Correctional Institution on June 21, 1978. The various types of substance abuse are cross-tabulated with age, most serious current offense, length of sentence, previous criminal record and previous incarcerations at The Training School for Boys or Girls.

The variable previous criminal record is a two level variable:

- 1: Previous incarceration at the ACI as a sentenced inmate.
- 2: No previous sentenced incarcerations.

Inmates whose only previous incarcerations were under awaiting trial Status, were tabulated as having no previous incarcerations.

Two different aspects of the inmates type of offense are considered:

- 1: The most serious charge.
- 2: The most serious drug-related charge.

In a minority of cases the inmates most serious charge was the drug charge.

Substance abusers are divided into three categories:

- 1: ALCOHOL ABUSERS: Includes all persons whose social history or medical records indicates the inmate abused alcohol or was treated for alcoholism, including participation in an Alcoholics Anonymous Program. He was also included as an alcoholic abuser if at least one of the offenses listed in his criminal history was committed under the influence of alcohol. Statements that the inmate was an occasional or social drinker did not result in his (her) being labeled an alcohol abuser for the purposes of this study.
- 2: MARIJUANA ABUSERS: This included all inmates who reported marijuana usage in either the social history or medical records. An inmate was also considered a marijuana user if he (she) was ever convicted of the offense of possession of marijuana, or of committing a crime while under the influence of marijuana.
- 3: OTHER DRUGS: Include any usage of substances other than alcohol or marijuana. This drug usage was tabulated as a result of one of the following three circumstances:
 - 1: Drug use was reported in either the inmate's social history or his (her) medical record.
 - 2: The inmate had incidents of possession or use of drugs or a needle and syringe during his (her) incarceration.
 - 3: The inmate's criminal history included drug offenses or crimes committed while under the influence of drugs.

EXTENT OF SUBSTANCE ABUSE

Table 1 is a summary of the three broad categories of substance abusers. Eighty-one percent of the sentenced population had abused at least one substance. Slightly more than two-fifths (40.7 percent) had abused alcohol and 38.5 percent had used marijuana. It should be noted that this 40.7 percent that abused alcohol did not include persons who drank occasionally or socially unless this person was charged with an offense relating to alcohol or was under the influence of alcohol while committing a crime. Any non-prescribed use of any other substances was considered substance abuse for the purposes of this report. Well over half (55.4 percent) of the inmates had abused at least one substance other than alcohol or marijuana.

Among the alcohol abusers, 36.6 percent abused no other drugs, 12.5 percent abused alcohol and marijuana but no other drugs, and 50.9 percent abused alcohol and at least one drug other than marijuana.

Among the marijuana abusers; 15.0 percent used only marijuana, 13.2 percent used marijuana and alcohol but no other drug; and 71.7 percent used marijuana and at least one drug other than alcohol.

Among the abusers of drugs other than alcohol or marijuana, 49.8 percent used marijuana and 37.4 percent used alcohol.

Other drugs are divided into the following sub-categories.

I OPIATES

- a) Herion
- b) Morphine
- c) Methadone
- d) Unspecified, such as a physical examination finding needle tracks, or a conviction of possession of a needle and syringe.

II PCP (also known as THC)

III DOWNERS

- a) Barbituates
- b) Tranquillizers
- c) Dilaudid
- d) Other or unspecified downers

IV UPPERS

- a) Cocaine
- b) Amphetamines
- c) Crystall Meth
- d) Unspecified Uppers

V HALLUCINOGENS

- a) Mescaline
- b) LSD
- c) Unspecified

VI PAINT, GLUE, and CLEANING FLUIDS

VII DRUGS, UNSPECIFIED

TYPE OF SUBSTANCE ABUSE

The most widely abused substance was alcohol. More than two-fifths (40.7 percent) of the population either (1) indicated alcohol abuse in their social history, (2) committed a crime while under the influence of alcohol, or (3) committed an institutional infraction involving alcohol. Inmates whose social history indicated social or occasional drinking were not tabulated as alcohol abusers, unless they committed an offense while under the influence of alcohol or committed an institutional offense involving alcohol.

The second most widely abused substance was marijuana. Thirty-eight percent of the population either (1) indicated marijuana use in their social history, (2) committed an offense involving marijuana, (3) committed an offense while under the influence of marijuana or (4) used marijuana while in prison.

The third most common type of substance abused was opiates. Nearly one third (31.4 percent) of the inmate population had abused opiates. The most commonly used opiate was heroin, which was specifically mentioned in 133 inmate records. Morphine was mentioned in 12 records and methadone was mentioned in nine records. There were 34 cases in which no specific opiate was mentioned. These 34 persons consisted of inmates who either (1) committed offenses involving possession of narcotics or of a needle and syringe (2) were discovered to have needle tracks during a physical examination or (3) indicated in their social history that they abused narcotics or opiates, but with no further specification as to the type of opiate used.

The fourth most common class of substances abused came under the general category of "downers". Eighty six inmates (15.6 percent) abused this type of substance. Fifty six abused barbiturates, 17 abused tranquilizers (non-prescription use) and seven abused dilaudid.

There were 16 inmates who abused other or unspecified downers. Quaalude, dilantin, demerol, and sleeping pills were among the other types of "downers" abused.

The fifth most common type of substance abuse came under the category of "uppers". Fourteen percent of the inmate population abused this type of substance. The most common type of "uppers" abused, were amphetamines ("speed" - 62 cases) and cocaine (24 cases). There were two inmates who abused crystal meth and two who abused unspecified uppers.

Hallucinogens (excluding marijuana) were abused by 10.2 percent of the population. By far the most commonly abused hallucinogen was LSD. Fifty-three inmates abused LSD, seven inmates abused mescaline, and two abused unspecified hallucinogens.

Pencyclopine (known as PCP or THC) was abused by 32 inmates. There were 13 inmates who abused inhalants such as paint, glue, or cleaning fluid. There were 54 inmates whose drug use was unspecified. A few examples of data tabulated in this category were: (1) used "all drugs" (2) took pills (no further explanation) (3) convicted of possession of a controlled substance (not further specified) (4) used drugs since age 14 (5) experimented with drugs (not further specified) (6) took "everything" and (7) "into heavy drugs".

Opiate abuse was most common at ages 25-29 (41.4 percent), ages 30-35 (35.4 percent) and ages 30-34 (34.1 percent). Opiate abuse was very unusual for inmates 40 years old or older.

Abuse of drugs classified as uppers (mainly amphetamines and cocaine) was more common among younger inmates. Eighteen percent of the inmates less than 30 years old abused uppers, but only 7.7 percent of the inmates who were 30 years old or older abused uppers. Abuse of drugs classified as "downers" (bargituartes, tranquillizers, dilaudid and a few others) was much more common among younger inmates.

Forty percent of the inmates aged 18 or 19 abused "downers." The proportion of "downer" users decreased with increasing age. No one aged 40 or older abused "downers."

Most of the abusers of pencyclopine were young. Thirty-two percent of the inmates aged 18 or 19 used PCP. This proportion dropped to 9.5 percent for ages 20-24, 2.8 percent for ages 25-29, and 1.2 percent for ages 30-34. No one 35 years old or older used PCP.

Hallucinogens (LSD and Mescaline) were generally used by inmates aged 20-29. Slightly more than 10 percent of those aged 20-24 and 20.7 percent of those aged 25-29 used hallucinogens. One teenager and four inmates aged 30 or older abused this type of substance.

There were 13 inmates who abused inhalants (paint, glue, cleaning fluid, etc.). All of these inmates were less than 30 years old. The data for the preceeding six paragraphs of text are summarized in the table on the next page.

AGE AND SUBSTANCE ABUSE

Table 3 cross-tabulates age and substance abuse. The data indicate that the proportion of inmates with substance abuse problems is higher among the younger inmates. The age pattern for alcohol abuse was significantly different from the age pattern of drug abusers. Alcohol abuse was most common at ages 35-39 (50 percent), ages 40-49 (48.5 percent), ages 18-19 (48 percent), and ages 30-34 (46.3 percent). Alcohol abuse was least common at ages 50 or older (15.8 percent), ages 25-39 (37.2 percent) and ages 20-24 (38.7 percent). Marijuana abuse was highest at ages 18-19 (84.0 percent) and lowest at ages 50 or older (10.5 percent). The proportion of marijuana users decreases with increasing age in every age group without exception. The data are summarized in the table below.

TABLE A
ALCOHOL, MARIJUANA, AND TOTAL SUBSTANCE ABUSE BY AGE

<u>AGE GROUP</u>	<u>ANY SUBSTANCE</u>	<u>PERCENTAGE WHO ABUSED:</u>	
		<u>ALCOHOL</u>	<u>MARIJUANA</u>
18-19	96.0	48.0	84.0
20-24	80.9	38.7	46.7
25-29	90.3	37.2	45.5
30-34	80.5	46.3	24.4
35-39	79.2	50.0	12.5
40-49	66.7	48.5	12.1
50 or Over	26.3	15.8	10.5

TAB B

PERCENTAGE OF SUBSTANCE ABUSERS BY AGE AND TYPE OF SUBSTANCE

<u>AGE GROUP</u>	<u>OPIATES</u>	<u>UPPERS</u>	<u>DOWNERS</u>	<u>PCP</u>	<u>HALLUCINOGENS</u>	<u>INHALANTS</u>
18-19	16.0	20.0	40.0	32.0	4.0	8.0
20-24	30.2	12.1	19.6	9.5	10.6	4.0
25-29	41.4	25.5	15.9	2.8	20.7	2.1
30-34	34.1	8.5	11.0	1.2	3.7	0.0
35-39	35.4	10.4	10.4	0.0	0.0	0.0
40-49	9.1	3.0	0.0	0.0	3.0	0.0
50 or older	5.3	5.3	0.0	0.0	0.0	0.0

RACE AND SUBSTANCE ABUSE

Table 4 is a cross-tabulation of race and substance abuse. The proportion of substance abusers was slightly higher among white inmates (82.2 percent) than among blacks (78.2 percent) or Hispanics (71.4 percent). Chi-square tests show this slight difference to be insignificant.

Alcohol abuse was much more prevalent among whites (44.6 percent) than among blacks (29.3 percent) or Hispanics (28.6 percent). This result is statistically significant ($p=.995+$). Marijuana use was very slightly more prevalent among blacks (39.1 percent) and Hispanics (42.9 percent) than among whites (38.3 percent). This relationship is not significant.

Opiate abuse was much more common among Hispanics (71.4 percent) and blacks (40.6 percent) than among whites (27.3 percent). Chi-square tests show this relationship to be highly significant ($p=.995+$). Abuse of "uppers" (usually amphetamines or cocaine) was more prevalent among whites (16.1 percent) than among blacks (9.8 percent). This relationship is only significant at the .90 level of confidence.

Abuse of "downers" was more prevalent among whites (17.6 percent) than among blacks (8.3 percent). This relationship is significant at the .99 level of confidence. Whites were more likely to use pencyclopine than blacks. This relationship is significant at the .95 level of confidence. Whites used hallucinogens slightly more often than blacks. This relationship is not significant.

SUBSTANCE ABUSE AND TYPE OF OFFENSE

Table 5 is a detailed cross-tabulation of type of substance abuse and type of offense.

Table C (following this section of text) is a condensed version of this table showing the 10 most common types of offense and the corresponding substance abuse rate for these 10 categories of offender.

All 38 inmates whose most serious offense was a drug charge were by definition substance abusers. This group of offenders was less likely to abuse alcohol than the prison population at large, but was more likely to have abused every other type of substance. The most outstanding statistic is that more than two-thirds (68.4 percent) of this group of offenders abused opiates.

The inmates whose most serious charge was assault, had the second highest rate of substance abuse (88.2 percent). This group abused alcohol much more frequently than the total prison population, but abused marijuana slightly less frequently (this 0.3 percentage difference is not significant). Inmates convicted of assault were more likely to abuse opiates, "uppers", and "downers" than the other inmates, but were less likely to have abused hallucinogens.

Inmates whose most serious charge was robbery had the third highest rate of substance abuse (85.9 percent). Inmates convicted of robbery were less likely to abuse alcohol than the total population, but were more likely to abuse marijuana opiates, "uppers", "downers", and hallucinogens.

Inmates whose most serious offense was breaking and entering or burglary had a substance abuse rate of 83.5 percent. This group of offenders were more likely to abuse marijuana than any other type of offender. These offenders were more likely to abuse alcohol, "uppers" hallucinogens or PCP than the total population. Burglars, however, were less likely to abuse opiates than the total population.

Inmates convicted of manslaughter had a substance abuse rate of 81.3 percent. The alcohol abuse rate was 62.5 percent, the highest of any group of offenders. Inmates convicted of manslaughter used PCP and "uppers" more frequently than the population at large (neither of these two facts are significant). The abuse rate for all other substances was lower among this group of offenders than in the total population.

Inmates whose most serious offense was rape, had a substance abuse rate of 81.3 percent. More than half (53.1 percent) of these 32 inmates abused alcohol. Inmates convicted of rape abused substances other than alcohol less frequently than the general prison population.

Inmates whose most serious offense was a sex offense other than rape were about as likely to abuse alcohol as any other inmate, but were much less likely to abuse any other substance.

Murderers were less likely to abuse any substance than the population at large. Similarly, inmates whose most serious offense was assault with intent to kill were less likely to be a substance abuser than the population in general. Inmates whose most serious offense was auto theft were also less likely to be substance abusers than the general population.

TABLE C

SUBSTANCE ABUSE RATES ACCORDING TO TYPE OF OFFENSE

TYPE OF SUBSTANCE AND PERCENTAGE OF ABUSERS

<u>RANK TYPE OF OFFENSE</u>	<u>NUMBER of CASES</u>	<u>ALL SUBSTANCES</u>	<u>ALCOHOL</u>	<u>MARIJUANA</u>
1. Robbery	163	85.9	34.4	43.6
2. Breaking & Entering or Burglary	103	83.5	44.7	52.4
3. Murder	76	67.1	36.8	21.1
4. Drug Offenses	38	100.0	34.2	44.7
5. Assault	34	88.2	47.1	38.2
6. Rape	32	81.3	53.1	18.8
7. Manslaughter	16	81.3	62.5	31.3
8/9. Assault with intent to kill	13	69.2	23.1	30.8
8/9. Stolen Motor Vehicle	13	69.2	46.2	30.8
10. Sex Offenses other than rape	12	50.0	41.7	8.3
TOTAL POPULATION	551	81.1	40.7	38.5

TABLE C

SUBSTANCE ABUSE RATES ACCORDING TO TYPE OF OFFENSE

TYPE OF SUBSTANCE AND PERCENTAGE OF ABUSERS

<u>RANK TYPE OF OFFENSE</u>	<u>NUMBER of CASES</u>	<u>OPIATES</u>	<u>UPPERS</u>	<u>DOWNERS</u>	<u>HALLUCINOGENS</u>	<u>PCP</u>
1. Robbery	163	38.7	16.0	19.6	10.4	4.3
2. Breaking & Entering or Burglary	103	29.1	20.4	19.4	13.6	11.7
3. Murder	76	21.1	9.2	5.3	9.2	2.6
4. Drug Offenses	38	68.4	23.7	15.8	18.4	7.9
5. Assault	34	38.2	20.6	20.6	5.9	5.9
6. Rape	32	9.4	0.0	12.5	9.4	3.1
7. Manslaughter	16	18.8	18.8	6.3	6.3	12.5
8/9. Assault with intent to kill	13	30.8	7.7	15.4	7.7	7.7
8/9. Stolen Motor Vehicle	13	0.0	7.7	7.7	0.0	0.0
10. Sex Offenses other than rape	12	8.3	8.3	0.0	0.0	8.3
TOTAL POPULATION	551	31.4	14.5	15.6	10.2	5.8

SUBSTANCE ABUSE AND RECIDIVISM STATUS

Table 6 is a cross-tabulation of substance abuse and recidivism status. For the purposes of this study a recidivist is defined as an inmate serving a second or subsequent sentence. The rate of substance abuse for recidivists (83.8 percent) was considerably higher than the corresponding rate of substance abuse for non-recidivists (77.7 percent). These differing rates of substance abuse are significant at the .90 level of confidence.

Alcohol abuse was more common among recidivists (44.3 percent) than among non-recidivists (36.0 percent). This difference was significant at the .95 level of confidence. Most of this difference can be explained by the fact that alcohol was by far the most abused substance by inmates 30 years old or older. Many of these older inmates had been incarcerated prior to their current sentence.

Marijuana abuse was one of the few substance that was more widely abused by non-recidivists than by recidivists. This is probably due to the fact that marijuana abuse was more popular among young inmates who have not yet had the chance to be sentenced to the ACI more than once. The differing rates of marijuana abuse observed by recidivists (35.9 percent) and non-recidivists (41.7 percent) were not significant at even the .90 level of confidence.

One highly significant finding of this tabulation was that recidivists were much more likely to abuse opiates than non-recidivists. The fact that 38.2 percent of the recidivists, but only 22.7 percent of the non-recidivists abused opiates was significant at the .995 level of confidence.

Abuse of "uppers" was also much more common among recidivists (18.8 percent) than among non-recidivists (9.1 percent). This finding is also significant at the .995 level of confidence.

Abuse of "downers" was slightly more prevalent among recidivists than among non-recidivists. This fact is not statistically significant. The higher rate of abuse of pencyclopine among non-recidivists (7.9 percent) than among recidivists (4.2 percent) is significant at the .90 level of confidence. The differing substance abuse levels for inhalants (glue, paint, cleaning fluids, etc.) was not significant at all.

SUBSTANCE ABUSE AND JUVENILE EXPERIENCE

Table 7 is a cross-tabulation of substance abuse and juvenile incarcerations. The rate of substance abuse was 85 percent for inmates who had been to the Training School and 78 percent for inmates who had not been to the Training School. This difference was significant at the .95 level of confidence.

The alcohol abuse rate was slightly higher among inmates who had no Training School experience than the corresponding rate for inmates with Training School experience. On the other hand, marijuana abuse was more prevalent among inmates with Training School experience. Neither of these two facts are significant at even the .90 level of confidence.

The only two classes of substances that yielded significant results were opiates and downers. Inmates who had been to the Training School were much more likely to have abused opiates than inmates with no Training School experience ($p = .995+$). Inmates who incurred juvenile incarcerations were also much more likely to abuse "downers" than inmates with no incarcerations ($p = .975$).

SUBSTANCE ABUSE AND LENGTH OF SENTENCE

Table 8 is a cross-tabulation of substance abuse and length of sentence. Table D of the text is a summary of the highlights of Table 8. Substance abuse rates were highest for persons sentenced to 7.5 - 9.49 years (91.7 percent) and next highest for persons sentenced to less than 18 months (90.9 percent). Substance abuse rates remained within the range of 81.4 percent and 88.6 percent for persons sentenced to more than 17 months, but less than 7.5 years. Substance abuse rates were below 80 percent for persons sentenced to 9.5 - 19.5 years. Inmates sentenced to 25 years or more (including lifers) had the lowest substance abuse rate of the entire cohort. Thus, the general trend suggested by these data is that substance abuse rates are higher among inmates with shorter sentences.

Alcohol abuse was by far more prevalent among inmates with shorter sentences. In fact, 63.6 percent of the inmates sentenced to less than six months abused alcohol. The alcohol abuse rate was 45.5 percent for those sentenced to 6.0 - 17.9 months and 47.7 percent for those sentenced to 18.0 - 29.9 months. Alcohol abuse rates were also high among those sentenced to 5.5 - 9.5 years and 20.0 - 24.99 years. Inmates sentenced to 25 years or more (including lifers) had the lowest alcohol abuse rate of all.

Marijuana abuse was also much more prevalent among inmates with shorter sentences. Just under half (48.4 percent) of the inmates sentenced to less than 4.5 years were abusers of marijuana. Inmates sentenced to at least 4.5 years but less than 9.5 years had a marijuana abuse rate of 40.6. The marijuana abuse rate for inmates sentenced to 9.5 years or longer was only 21.6 percent.

The relationship between length of sentence and substance abuse rates for opiates did not quite fit the general trend. Inmates sentenced to less than six months had the lowest opiate abuse rate (9.1 percent).

The opiate abuse rate was also low for inmates sentenced to 15 years or longer (20.7 percent). The highest opiate abuse rates were found among inmates sentenced to 5.5 - 9.5 years (47.1 percent). Opiate abuse was also high among persons sentenced to 10.5 - 14.9 years, but this result is not statistically significant due to the small number of inmates who incurred sentences within that range. The opiate abuse rate for persons sentenced to 6.0 - 17.9 months was lower than average (27.3 percent). The opiate abuse rate for persons sentenced to between 1.5 and 5.4 years was 32.7 percent. This figure is slightly above the average for the whole cohort (31.4 percent).

The "upper" abuse rate was highest among persons sentenced to 4.5 - 5.49 years (23.3 percent) and next highest among persons sentenced to 7.5 - 9.49 years (20.8 percent). The abuse rate for uppers was above average for prisoners sentenced to 1.5 - 4.5 years (17.4 percent). Abuse of "uppers" was very uncommon among persons sentenced to less than 18 months (6.8 percent). The "upper" abuse rate was below average for those sentenced to 9.5 years or more (9.6 percent).

The "downer" abuse rate followed a more irregular pattern. Abuse of this type of substance was most common among inmates sentenced to 5.5 - 7.49 years (25 percent), and next most common among inmates sentenced to 3.5 - 4.49 years (24.1 percent). The "downer" abuse rate was above average for inmates sentenced to 18 - 29 months (20.9 percent), inmates sentenced to 5.0 - 17 months (18.2 percent), and inmates sentenced to 2.5 - 3.49 years (17.5 percent). None of the 11 inmates sentenced to less than six months abused "downers". The downer abuse rate was well below average for inmates sentenced to more than 7.5 years (9.4 percent).

Pencyclopine was more likely to be abused by inmates with shorter sentences. The rate of abuse for this substance was 15.9 percent for inmates sentenced to less than 18 months, 8.0 percent for inmates sentenced to at least 18 months but less than 4.5 years, and 2.7 percent for inmates sentenced to 4.5 years or longer.

The abuse rate for hallucinogens followed an irregular pattern. Hallucinogens were most commonly abused by inmates sentenced to less than six months and inmates sentenced to 7.5 - 9.5 years. Inmates sentenced to 10.5 - 14.9 years and lifers had the lowest hallucinogen abuse rate.

TABLE D

SUBSTANCE ABUSE RATES BY LENGTH OF SENTENCE

<u>LENGTH OF SENTENCE</u>	<u>ANY SUBSTANCE</u>	<u>ALCOHOL</u>	<u>MARIJUANA</u>	<u>OPIATES</u>	<u>UPPERS</u>	<u>DOWNERS</u>	<u>PCP</u>	<u>HALLUCINOGENS</u>
Less than 6 months	90.0	63.6	45.5	9.1	9.1	0.0	9.1	18.2
6.0 - 17.9 months	90.9	45.5	48.4	27.3	6.1	18.2	18.2	9.1
18.0 - 29.9 months	86.0	47.7	48.8	32.6	17.4	20.9	7.0	11.6
2.5 - 3.49 years	81.4	37.1	44.3	30.9	17.5	17.5	9.3	9.3
3.5 - 4.49 years	86.2	41.4	62.1	37.9	17.2	24.1	6.9	13.8
4.5 - 5.49 years	81.7	35.0	41.7	33.3	23.3	15.0	1.7	15.0
5.5 - 7.49 years	88.6	43.2	40.9	45.5	11.4	25.0	4.5	2.3
7.5 - 9.49 years	91.7	45.8	37.5	50.0	20.8	8.3	4.2	16.7
9.5 - 10.49 years	68.4	39.5	5.3	28.9	10.5	13.2	0.0	7.9
10.5 - 14.99 years	77.8	38.9	22.2	44.4	11.1	11.1	0.0	5.6
15.0 - 19.99 years	71.5	32.1	32.1	25.0	10.7	7.1	3.6	10.7
20.0 - 24.99 years	85.0	50.0	20.0	25.0	5.0	10.0	10.0	10.0
25 + years except life	65.5	34.5	24.1	20.7	10.3	10.3	0.0	10.3
Life	67.4	32.4	29.4	14.7	8.8	5.9	2.9	5.9

TABLE 1

Number and type of Substance Abusers in the Sentenced Population of the
Rhode Island Adult Correctional Institution - June 21, 1978

Number of Inmates	551
Number of Substance Abusers	447
Number of non-substance abusers	104
Alcohol Abusers (Total)	224
Abused alcohol but no other drug	82
Abused alcohol and marijuana but no other drugs	28
Abused alcohol and at least one drug other than marijuana	114
Marijuana Abusers (Total)	212
Abused marijuana but no other drug	32
Abused marijuana and alcohol but no other drugs	28
Abused marijuana and at least one other drug other than alcohol	152
Abusers of Other Drugs (Total)	305
Abused other drugs and alcohol but not marijuana	52
Abused other drugs and marijuana but not alcohol	90
Abused other drugs, marijuana, and alcohol.	62
Abused other drugs but did not abuse alcohol or marijuana	101

TABLE 2

Outline of substances other than alcohol or marijuana that were abused
by ACI Inmates.

Number of Inmates abusing drugs other than alcohol or marijuana* 303

Number that Abused:

I OPIATES*	173
a) HEROIN	133
b) MORPHINE	12
c) METHADONE	9
d) OTHER or UNSPECIFIED OPIATES#	34
II PCP (also known as THC)	32
III DOWNERS*	86
a) BARBITURATES	56
b) TRANQUILIZERS	17
c) DILAUDID	7
d) OTHER or UNSPECIFIED DOWNERS	16
IV UPPERS*	80
a) COCAINE	24
b) AMPHETAMINE	62
c) CRYSTAL METH	2
d) UNSPECIFIED UPPERS	2
V HALLUCINOGENS	56
a) Mescaline	7
b) LSD	53
c) UNSPECIFIED	2
VI PAINT, GLUE and CLEANING FLUIDS	13
VII DRUGS UNSPECIFIED (including such statements as "every thing," "all drugs," etc.)	55

*Totals for the subcategories add to more than the total because some inmates used more than one substance.

#If needle tracks were discovered during the inmate's physical examination or the inmate was charged with possession of a needle or syringe, he (she) was tabulated as an unspecified OPIATE user.

TAB 3

**SENTENCED POPULATION AT THE ADULT CORRECTIONAL INSTITUTION
ACCORDING TO AGE AND TYPE OF SUBSTANCE ABUSE**

Type of substance abuse	AGE							
	ALL AGES	18-19	20-24	25-29	30-34	35-39	40-49	50 or Older
All Inmates	551	25	199	145	82	48	33	19
Non-substance abusers	104	1	38	14	16	10	11	14
Substance abusers (any)	447	24	161	131	66	38	22	5
Alcohol	224	12	77	54	38	24	16	3
Marijuana	212	21	93	66	20	6	4	2
Opiates (any)	173	4	60	60	28	17	3	1
Heroin	133	4	49	48	17	13	1	1
Morphine	12	0	3	5	0	3	1	0
Methadone	9	0	4	3	2	0	0	0
Other or unspecified	34	0	9	11	9	4	1	0
Uppers (any)	80	5	24	37	7	5	1	1
Cocaine	24	4	7	9	1	2	0	1
Amphetamines	62	3	19	30	6	3	1	0
Crystall meth	2	0	1	1	0	0	0	0
Unspecified	2	0	1	1	0	0	0	0
Downers (any)	86	10	39	23	9	5	0	0
Tranquillizers	17	5	6	4	1	1	0	0
Dilaudid	7	0	6	1	0	0	0	0
Barbiturates	56	5	22	17	8	4	0	0
Other or unspecified	16	3	8	4	1	0	0	0
Pencyclopine (PCP, THC)	32	8	19	4	1	0	0	0
Hallucinogens (any)	56	1	21	30	3	0	1	0
Mescaline	7	0	4	3	0	0	0	0
LSD	53	1	19	29	3	0	1	0
Unspecified	2	0	1	1	0	0	0	0
Paint, Glue & cleaning fluid	13	2	8	3	0	0	0	0
Drugs, unspecified	55	2	27	12	7	3	3	1

TAB 4

SENTENCED POPULATION AT THE ADULT CORRECTIONAL INSTITUTION
ACCORDING TO RACE AND TYPE OF SUBSTANCE ABUSE

	ALL RACES		WHITE (NON-HISPANIC)	
	NUMBER	PERCENT	NUMBER	PERCENT
ALL INMATES	551	100.0	410	100.0
Non-substance abusers	104	18.9	73	17.8
Substance Abusers (any)	447	81.1	337	82.2
Alcohol	224	40.7	183	44.6
Marijuana	212	38.5	157	38.3
Opiates (any)	173	31.4	112	27.3
Heroin	133	24.1	81	19.8
Morphine	12	2.2	12	2.9
Methadone	9	1.6	7	1.7
Other or unspecified	34	6.2	27	6.6
Uppers (any)	80	14.5	66	16.1
Cocaine	24	4.4	18	4.4
Amphetamines	62	11.3	55	13.4
Crystall meth	2	0.4	2	0.5
Unspecified	2	0.4	1	0.2
Downers (any)	86	15.6	72	17.6
Tranquillizers	17	3.1	13	3.2
Dilaudid	7	1.3	5	1.2
Barbiturates	56	10.2	51	12.4
Other or unspecified	16	2.9	12	2.9
Pencyclopine (PCP, THC)	32	5.8	28	6.8
Hallucinogens (any)	56	10.2	46	11.2
Mescaline	7	1.3	6	1.5
LSD	53	9.6	43	10.5
Unspecified	2	0.4	2	0.5
Paint, Glue, and cleaning fluids	13	2.4	13	3.2
Drugs, unspecified	55	10.0	45	11.0

TAB 5

SENTENCED POPULATION AT THE ADULT CORRECTIONAL INSTITUTION
ACCORDING TO CHARGE AND TYPE OF SUBSTANCE ABUSED

TYPE OF SUBSTANCE ABUSED	ALL CHARGES		MURDER A		ASSAULT WITH INTENT TO KILL		MANSLAUGHTER	
	NUMBER	PERCENT	NUMBER	PERCENT	NUMBER	PERCENT	NUMBER	PERCENT
All Inmates	551	100.0	76	100.0	13	100.0	16	100.0
Non-substance abusers	104	18.9	25	32.9	4	30.8	3	18.8
Substance abusers (any)	447	81.1	51	67.1	9	69.2	13	81.3
Alcohol	224	40.7	28	36.8	3	23.1	10	62.5
Marijuana	212	38.5	16	21.1	4	30.8	5	31.3
Opiates (any)	173	31.4	16	21.1	4	30.8	3	18.8
Heroin	133	24.1	7	9.2	4	30.8	1	6.3
Morphine	12	2.2	1	1.3	0	----	0	----
Methadone	9	1.6	1	1.3	0	----	0	----
Other or unspecified	34	6.2	8	10.5	0	----	2	12.5
Uppers (any)	80	14.5	7	9.2	1	7.7	3	18.8
Cocaine	24	4.4	2	2.6	0	----	1	6.3
Amphetamines	62	11.3	7	9.2	1	7.7	3	18.8
Crystall meth	2	0.4	0	----	0	----	0	----
Unspecified	2	0.4	0	----	0	----	0	----
Downers (any)	86	15.6	4	5.3	2	15.4	1	6.3
Tranquillizers	17	3.1	1	1.3	0	----	0	----
Dilaudid	7	1.3	0	----	0	----	0	----
Barbiturates	56	10.2	3	3.9	2	15.4	1	6.3
Other or unspecified	16	2.9	0	----	0	----	0	----
Pencyclopine (PCP, THC)	32	5.8	2	2.6	1	7.7	2	12.5
Hallucinogens (any)	56	10.2	7	9.2	1	7.7	1	6.3
Mescaline	7	1.3	0	----	0	----	1	6.3
LSD	53	9.6	5	6.6	1	7.7	1	6.3
Unspecified	2	0.4	2	2.6	0	----	0	----
Paint, Glue, & cleaning fluids	13	2.4	0	----	1	7.7	0	----
Drugs, unspecified	55	10.0	9	11.8	1	7.7	0	----

A-Includes accessory to murder and conspiracy to murder.

TABLE 5 (CONTINUED)

TYPE OF SUBSTANCE ABUSED	RAPE ^B		OTHER SEX OFFENSES		ROBBERY ^C		ASSAULT	
	NUMBER	PERCENT	NUMBER	PERCENT	NUMBER	PERCENT	NUMBER	PERCENT
All Inmates	32	100.0	12	100.0	163	100.0	34	100.0
Non-substance abusers	6	18.8	6	50.0	23	14.1	4	11.8
Substance abusers (any)	26	81.3	6	50.0	140	85.9	30	88.2
Alcohol	17	53.1	5	41.7	56	34.4	16	47.1
Marijuana	6	18.8	1	8.3	71	43.6	13	38.2
Opiates (any)	3	9.4	1	8.3	63	38.7	13	38.2
Heroin	3	9.4	1	8.3	51	31.3	8	23.5
Morphine	0	----	0	----	5	3.1	1	2.9
Methadone	0	----	0	----	2	1.2	0	----
Other or unspecified	0	----	0	----	9	5.5	4	11.8
Uppers (any)	0	----	1	8.3	26	16.0	7	20.6
Cocaine	0	----	1	8.3	5	3.1	1	2.9
Amphetamines	0	----	0	----	22	13.5	6	17.6
Crystall meth	0	----	0	----	1	0.6	0	----
Unspecified	0	----	0	----	1	0.6	0	----
Downers (any)	4	12.5	0	----	32	19.6	7	20.6
Tranquillizers	1	3.1	0	----	8	4.9	3	8.8
Dilaudid	0	----	0	----	2	1.2	1	2.9
Barbiturates	3	9.4	0	----	21	12.9	4	11.8
Other or unspecified	0	----	0	----	7	4.3	1	2.9
Pencyclopine (PCP, THC)	1	3.1	1	8.3	7	4.3	2	5.9
Hallucinogens (any)	3	9.4	0	----	17	10.4	2	5.9
Mescaline	0	----	0	----	1	0.6	0	----
LSD	3	9.4	0	----	17	10.4	2	5.9
Unspecified	0	----	0	----	0	----	0	----
Paint, Glue, and Cleaning Fluid	0	----	0	----	6	3.7	2	5.9
Drugs, Unspecified	3	9.4	0	----	22	13.5	5	14.7

B-Includes attempted rape.

C-Includes assault with intent to rob & conspiracy to rob.

TABLE 5 (CONTINUED)

TYPE OF SUBSTANCE ABUSED	KIDNAPPING		LARCENY FROM PERSON		WEAPONS OFFENSES		BURGLARY	
	NUMBER	PERCENT	NUMBER	PERCENT	NUMBER	PERCENT	NUMBER	PERCENT
All Inmates	6	100.0	9	100.0	8	100.0	103	100.0
Non-substance abusers	1	16.7	1	11.1	1	12.5	17	16.5
Substance abusers (any)	5	83.3	8	88.9	7	87.5	86	83.5
Alcohol	4	66.7	6	66.7	4	50.0	46	44.7
Marijuana	2	33.3	6	66.7	1	12.5	54	52.4
Opiates (any)	1	16.7	2	22.2	4	50.0	30	29.1
Heroin	0	----	2	22.2	3	37.5	26	25.2
Morphine	0	----	0	----	0	----	2	1.9
Methadone	0	----	0	----	2	25.0	3	2.9
Other or unspecified	1	16.7	0	----	0	----	4	3.9
Uppers (any)	0	----	2	22.2	0	----	21	20.4
Cocaine	0	----	0	----	0	----	10	9.7
Amphetamines	0	----	2	22.2	0	----	14	13.6
Crystall meth	0	----	0	----	0	----	1	1.0
Unspecified	0	----	0	----	0	----	0	----
Downers (any)	0	----	2	22.2	1	12.5	20	19.4
Tranquillizers	0	----	0	----	0	----	4	3.9
Dilaudid	0	----	0	----	1	12.5	0	----
Barbiturates	0	----	1	11.1	0	----	13	12.6
Other or unspecified	0	----	1	11.1	0	----	4	3.9
Pencyclopine (PCP, THC)	0	----	1	11.1	0	----	12	11.7
Hallucinogens (any)	0	----	1	11.1	2	25.0	14	13.6
Mescaline	0	----	0	----	0	----	4	3.9
LSD	0	----	1	11.1	2	25.0	13	12.4
Unspecified	0	----	0	----	0	----	0	----
Paint, Glue, & Cleaning Fluid	0	----	0	----	0	----	2	1.9
Drugs, Unspecified	2	33.3	0	----	1	12.5	7	6.8

TABLE 5 (CONTINUED)

TYPE OF SUBSTANCE ABUSED	STOLEN MOTOR VEHICLE		ARSON OR STATUTORY BURNING		LARCENY OR REC. STO. GOODS		FORGERY OR EMBEZZLEMENT	
	NUMBER	PERCENT	NUMBER	PERCENT	NUMBER	PERCENT	NUMBER	PERCENT
All Inmates	13	100.0	5	100.0	6	100.0	5	100.0
Non-substance abusers	4	30.8	2	40.0	3	50.0	1	20.0
Substance Abusers (any)	9	69.2	3	60.0	3	50.0	4	80.0
Alcohol	6	46.2	3	60.0	1	16.7	3	60.0
Marijuana	4	30.8	2	40.0	2	33.3	1	20.0
Opiates (any)	0	----	0	----	2	33.3	1	20.0
Heroin	0	----	0	----	1	16.7	1	20.0
Morphine	0	----	0	----	0	----	0	----
Methadone	0	----	0	----	0	----	0	----
Other or unspecified	0	----	0	----	1	16.7	0	----
Uppers (any)	1	7.7	0	----	1	16.7	0	----
Cocaine	0	----	0	----	0	----	0	----
Amphetamines	1	7.7	0	----	1	16.7	0	----
Crystall meth	0	----	0	----	0	----	0	----
Unspecified	0	----	0	----	0	----	0	----
Downers (any)	1	7.7	1	20.0	2	33.3	0	----
Tranquillizers	0	----	0	----	0	----	0	----
Dilaudid	0	----	0	----	1	16.7	0	----
Barbiturates	1	7.7	0	----	1	16.7	0	----
Other or unspecified	0	----	1	20.0	0	----	0	----
Pencyclopine (PCP, THC)	0	----	0	----	0	----	0	----
Hallucinogens (any)	0	----	0	----	1	16.7	0	----
Mescaline	0	----	0	----	0	----	0	----
LSD	0	----	0	----	1	16.7	0	----
Unspecified	0	----	0	----	0	----	0	----
Paint, Glue & Cleaning Fluids	0	----	0	----	0	----	0	----
Drugs, Unspecified	1	7.7	0	----	0	----	0	----

TABLE 5 (CONTINUED)

TYPE OF SUBSTANCE ABUSED	DRUG OFFENSES		ALL OTHER OFFENSES	
	NUMBER	PERCENT	NUMBER	PERCENT
All Inmates	38	100.0	12	100.0
Non-substance abusers	0	0.0	3	25.0
Substance abusers (any)	38	100.0	9	75.0
Alcohol	13	34.2	3	25.0
Marijuana	17	44.7	7	58.3
Opiates (any)	26	68.4	4	33.3
Heroin	21	55.3	4	33.3
Morphine	3	7.9	0	----
Methadone	1	2.6	0	----
Other or unspecified	5	13.2	0	----
Uppers (any)	9	23.7	1	8.3
Cocaine	3	7.9	1	8.3
Amphetamines	5	13.2	0	----
Crystall. meth	0	----	0	----
Unspecified	1	2.6	0	----
Downers (any)	6	15.8	3	25.0
Tranquillizers	0	----	0	----
Dilaudid	2	5.3	0	----
Barbiturates	4	10.5	2	16.7
Other or unspecified	0	----	2	16.7
Pencyclopine (PCP, THC)	3	7.9	0	----
Hallucinogens (any)	7	18.4	0	----
Mescaline	1	2.6	0	----
LSD	7	18.4	0	----
Unspecified	0	----	0	----
Paint, Glue, & Cleaning Fluids	2	5.3	0	----
Drugs, Unspecified	4	10.5	0	----

TAB 6

**SENTENCED POPULATION AT THE ADULT CORRECTIONAL INSTITUTION
ACCORDING TO RECIDIVISM STATUS AND TYPE OF SUBSTANCE ABUSED**

TYPE OF SUBSTANCE ABUSED	TOTAL		FIRST INCARCERATION*		SECOND OR SUBSEQUENT INCARCERATION*	
	NUMBER	PERCENT	NUMBER	PERCENT	NUMBER	PERCENT
All Inmates	551	100.0	242	100.0	309	100.0
Non-substance abusers	104	18.9	54	22.3	50	16.2
Substance abusers (any)	447	81.1	188	77.7	259	83.8
Alcohol	224	40.7	87	36.0	137	44.3
Marijuana	212	38.5	101	41.7	111	35.9
Opiates (any)	173	31.4	55	22.7	118	38.2
Heroin	133	24.1	43	17.8	90	29.1
Morphine	12	2.2	3	1.2	9	2.9
Methadone	9	1.6	3	1.2	6	1.9
Other or unspecified	34	6.2	11	4.5	23	7.4
Uppers (any)	80	14.5	22	9.1	58	18.8
Cocaine	24	4.4	8	3.3	16	5.2
Amphetamines	62	11.3	17	7.0	45	14.6
Crystall meth	2	0.4	0	0.0	2	0.6
Unspecified	2	0.4	1	0.4	1	0.3
Downers (any)	86	15.6	35	14.5	51	16.5
Tranquillizers	17	3.1	7	2.9	10	3.2
Dilaudid	7	1.3	4	1.7	3	1.0
Barbiturates	56	10.2	22	9.1	34	11.0
Other or unspecified	16	2.9	6	2.5	10	3.2
Pencyclopine (PCP, THC)	32	5.8	19	7.9	13	4.2
Hallucinogens (any)	56	10.2	18	7.4	38	12.3
Mescaline	7	1.3	3	1.2	4	1.3
LSD	53	9.6	16	6.6	37	12.0
Unspecified	2	0.4	1	0.4	1	0.3
Paint, Glue, & cleaning fluids	13	2.4	7	2.9	6	1.9
Drugs, unspecified	55	10.0	32	13.2	23	7.4

*Previous incarcerations under awaiting trial status are not considered.

TAB 7

SENTENCED POPULATION AT THE ADULT CORRECTIONAL INSTITUTION ACCORDING
TO TYPE OF SUBSTANCE ABUSED AND PRIOR TRAINING SCHOOL EXPERIENCE

TYPE OF SUBSTANCE ABUSED	TOTAL		TRAINING SCHOOL EXPERIENCE		NO TRAINING SCHOOL EXPERIENCE	
	NUMBER	PERCENT	NUMBER	PERCENT	NUMBER	PERCENT
All Inmates	551	100.0	246	100.0	305	100.0
Non-substance abusers	104	18.9	37	15.0	67	22.0
Substance Abusers (any)	447	81.1	209	85.0	238	78.0
Alcohol	224	40.7	97	39.4	127	41.6
Marijuana	212	38.5	98	39.8	114	37.4
Opiates (any)	173	31.4	98	39.8	75	24.6
Heroin	133	24.1	76	30.9	57	18.7
Morphine	12	2.2	5	2.0	7	2.3
Methadone	9	1.6	4	1.6	5	1.6
Other or unspecified	34	6.2	18	7.3	16	5.2
Uppers (any)	80	14.5	42	17.1	38	12.5
Cocaine	24	4.4	13	5.3	11	3.6
Amphetamines	62	11.3	31	12.6	31	10.2
Crystall meth	2	0.4	2	0.8	0	0.0
Unspecified	2	0.4	1	0.4	1	0.3
Downers (any)	86	15.6	48	19.5	38	12.5
Tranquillizers	17	3.1	7	2.8	10	3.3
Dilaudid	7	1.3	5	2.0	2	0.7
Barbiturates	56	10.2	32	13.0	24	7.9
Other or unspecified	16	2.9	11	4.5	5	1.6
Pencyclopine (PCP, THC)	32	5.8	12	4.9	20	6.6
Hallucinogens (any)	56	10.2	23	9.3	33	10.8
Mescaline	7	1.3	3	1.2	4	1.3
LSD	53	9.6	23	9.3	30	9.8
Unspecified	2	0.4	0	0.0	2	0.7
Paint, Glue, and Cleaning Fluids	13	2.4	7	2.8	6	2.0
Drugs, unspecified	55	10.0	25	10.2	30	9.8

TAB. 8

SENTENCED POPULATION AT THE ADULT CORRECTIONAL INSTITUTION
ACCORDING TO TYPE OF SUBSTANCE ABUSED AND LENGTH OF SENTENCE

TYPE OF SUBSTANCE ABUSED	TOTAL		LESS THAN SIX MONTHS		6.0 - 17.9 MONTHS	
	NUMBER	PERCENT	NUMBER	PERCENT	NUMBER	PERCENT
All Inmates	551	100.0	11	100.0	33	100.0
Non-Substance Abusers	104	18.9	1	9.1	3	9.1
Substance Abusers (any)	447	81.1	10	90.9	30	90.9
Alcohol	224	40.7	7	63.6	15	45.5
Marijuana	212	38.5	5	45.5	16	48.4
Opiates (any)	173	31.4	1	9.1	9	27.3
Heroin	133	24.1	1	9.1	7	21.2
Morphine	12	2.2	0	-----	0	-----
Methadone	9	1.6	0	-----	0	-----
Other or unspecified	34	6.2	0	-----	2	6.1
Uppers (any)	80	14.5	1	9.1	2	6.1
Cocaine	24	4.4	0	-----	0	-----
Amphetamines	62	11.3	1	9.1	2	6.1
Crystall meth	2	0.4	0	-----	0	-----
Unspecified	2	0.4	0	-----	0	-----
Downers (any)	86	15.6	0	-----	6	18.2
Tranquillizers	17	3.1	0	-----	1	3.0
Dilaudid	7	1.3	0	-----	2	6.1
Barbiturates	56	10.2	0	-----	2	6.1
Other or unspecified	16	2.9	0	-----	1	3.0
Pencyclopine (PCP, THC)	32	5.8	1	9.1	6	18.2
Hallucinogens	56	10.2	2	18.2	3	9.1
Mescaline	7	1.3	1	9.1	0	-----
LSD	53	9.6	2	18.2	3	9.1
Unspecified	2	0.4	0	-----	0	-----
Paint, Glue, and cleaning fluids	13	2.4	0	-----	1	3.0
Drugs, unspecified	55	10.0	1	9.1	4	12.1

TABLE 8 CONTINUED

SENTENCED POPULATION AT THE ADULT CORRECTIONAL INSTITUTION
ACCORDING TO TYPE OF SUBSTANCE ABUSED AND LENGTH OF SENTENCE

TYPE OF SUBSTANCE ABUSED	18.0 - 29.9 MONTHS		2.5 - 3.49 YEARS		3.5 - 4.49 YEARS	
	NUMBER	PERCENT	NUMBER	PERCENT	NUMBER	PERCENT
ALL INMATES	86	100.0	97	100.0	29	100.0
Non-Substance Abusers	12	14.0	18	18.6	4	13.8
Substance Abusers (any)	74	86.0	79	81.4	25	86.2
Alcohol	41	47.7	36	37.1	12	41.4
Marijuana	42	48.8	43	44.3	18	62.1
Opiates (any)	28	32.6	30	30.9	11	37.9
Heroin	24	27.9	24	24.7	10	34.5
Morphine	2	2.3	4	4.1	1	3.4
Methadone	5	5.8	2	2.1	0	-----
Other or unspecified	2	2.3	5	5.2	1	3.4
Uppers (any)	15	17.4	17	17.5	5	17.2
Cocaine	8	9.3	5	5.2	2	6.9
Amphetamines	9	10.5	13	13.4	4	13.8
Crystall meth	1	1.2	0	-----	1	3.4
Unspecified	0	-----	1	1.0	0	-----
Downers (any)	18	20.9	17	17.5	7	24.1
Tranquillizers	6	7.0	2	2.1	0	-----
Dilaudid	0	-----	2	2.1	2	6.9
Barbiturates	10	11.6	12	12.4	4	13.8
Other or unspecified	3	3.5	6	6.2	1	3.4
Pencyclopine (PCP,THC)	6	7.0	9	9.3	2	6.9
Hallucinogens (any)	10	11.6	9	9.3	4	13.8
Mescaline	1	1.2	4	4.1	0	-----
LSD	9	10.5	9	9.3	4	13.8
Unspecified	0	-----	0	-----	0	-----
Paint, Glue, and Cleaning Fluids	4	4.7	3	3.1	1	3.4
Drugs, unspecified	5	5.8	11	11.3	2	6.9

TABLE 8 CONTINUED

SENTENCED POPULATION AT THE ADULT CORRECTIONAL INSTITUTION
ACCORDING TO TYPE OF SUBSTANCE ABUSED AND LENGTH OF SENTENCE

TYPE OF SUBSTANCE ABUSED	4.5 - 5.49 YEARS		5.5 - 7.49 YEARS		7.5 - 9.49 YEARS	
	NUMBER	PERCENT	NUMBER	PERCENT	NUMBER	PERCENT
ALL INMATES	60	100.0	44	100.0	24	100.0
Non-Substance Abusers	11	18.3	5	11.4	2	8.3
Substance Abusers (any)	49	81.7	39	88.6	22	91.7
Alcohol	21	35.0	19	43.2	11	45.8
Marijuana	25	41.7	18	40.9	9	37.5
Opiates (any)	20	33.3	20	45.5	12	50.0
Heroin	16	26.7	17	38.6	11	45.8
Morphine	0	-----	1	2.3	0	-----
Methadone	1	1.7	0	-----	0	-----
Other or unspecified	3	5.0	3	6.8	1	4.2
Uppers (any)	14	23.3	5	11.4	5	20.8
Cocaine	1	1.7	3	6.8	2	8.3
Amphetamines	13	21.7	2	4.5	2	8.3
Crystall meth	0	-----	0	-----	0	-----
Unspecified	0	-----	0	-----	1	4.2
Downers (any)	9	15.0	11	25.0	2	8.3
Tranquillizers	3	5.0	1	2.3	0	-----
Dilaudid	1	1.7	0	-----	0	-----
Barbiturates	4	6.7	8	18.2	2	8.3
Other or unspecified	2	3.3	3	6.9	0	-----
Pencyclopine (PCP,THC)	1	1.7	2	4.5	1	4.2
Hallucinogens (any)	9	15.0	1	2.3	4	16.7
Mescaline	0	-----	0	-----	1	4.2
LSD	9	15.0	1	2.3	4	16.7
Unspecified	0	-----	0	-----	0	-----
Paint, Glue, and Cleaning Fluids	1	1.7	1	2.3	0	-----
Drugs, unspecified	3	5.0	7	15.9	2	8.3

TABLE 8 CONTINUED

SENTENCED POPULATION AT THE ADULT CORRECTIONAL INSTITUTION
ACCORDING TO TYPE OF SUBSTANCE ABUSED AND LENGTH OF SENTENCE

TYPE OF SUBSTANCE ABUSED	9.5 - 10.49 YEARS		10.5 - 14.99 YEARS		15.0 - 19.99 YEARS	
	NUMBER	PERCENT	NUMBER	PERCENT	NUMBER	PERCENT
ALL INMATES	38	100.0	18	100.0	28	100.0
Non-Substance Abusers	12	31.6	4	22.2	8	28.6
Substance Abusers (any)	26	68.4	14	77.8	20	71.5
Alcohol	15	39.5	7	38.9	9	32.1
Marijuana	2	5.3	4	22.2	9	32.1
Opiates (any)	11	28.9	8	44.4	7	25.0
Heroin	5	13.2	5	27.8	5	17.9
Morphine	1	2.6	1	5.6	0	-----
Methadone	0	-----	0	-----	0	-----
Other or unspecified	6	15.8	2	11.1	2	7.1
Uppers (any)	4	10.5	2	11.1	3	10.7
Cocaine	0	-----	1	5.6	1	3.6
Amphetamines	4	10.5	2	11.1	3	10.7
Crystall meth	0	-----	0	-----	0	-----
Unspecified	0	-----	0	-----	0	-----
Downers (any)	5	13.2	2	11.1	2	7.1
Tranquillizers	1	2.6	1	5.6	0	-----
Dilaudid	0	-----	0	-----	0	-----
Barbiturates	5	13.2	2	11.1	2	7.1
Other or unspecified	0	-----	0	-----	0	-----
Pencyclopine (PCP,THC)	0	-----	0	-----	1	3.6
Hallucinogens (any)	3	7.9	1	5.6	3	10.7
Mescaline	0	-----	0	-----	0	-----
LSD	3	7.9	1	5.6	2	7.1
Unspecified	0	-----	0	-----	1	3.6
Paint, Glue, and Cleaning Fluids	0	-----	0	-----	2	7.1
Drugs, unspecified	7	18.4	3	16.7	3	10.7

TABLE 8 CONTINUED

SENTENCED POPULATION AT THE ADULT CORRECTIONAL INSTITUTION
ACCORDING TO TYPE OF SUBSTANCE ABUSED AND LENGTH OF SENTENCE

TYPE OF SUBSTANCE ABUSED	20.0 - 24.99 YEARS		25 YEARS OR MORE EXCEPT LIFE		LIFE*	
	NUMBER	PERCENT	NUMBER	PERCENT	NUMBER	PERCENT
ALL INMATES	20	100.0	29	100.0	34	100.0
Non-Substance Abusers	3	15.0	10	34.5	11	32.4
Substance Abusers (any)	17	85.0	19	65.5	23	67.4
Alcohol	10	50.0	10	34.5	11	32.4
Marijuana	4	20.0	7	24.1	10	29.4
Opiates (any)	5	25.0	6	20.7	5	14.7
Heroin	2	10.0	4	13.8	2	5.9
Morphine	0	-----	1	3.4	1	2.9
Methadone	1	5.0	0	-----	0	-----
Other or unspecified	2	10.0	2	6.9	3	8.8
Uppers (any)	1	5.0	3	10.3	3	8.8
Cocaine	1	5.0	0	-----	0	-----
Amphetamines	1	5.0	3	10.3	3	8.8
Crystall meth	0	-----	0	-----	0	-----
Unspecified	0	-----	0	-----	0	-----
Downers (any)	2	10.0	3	10.3	2	5.9
Tranquillizers	1	5.0	1	3.4	0	-----
Dilaudid	0	-----	0	-----	0	-----
Barbiturates	1	5.0	2	6.9	2	5.9
Other or unspecified	0	-----	0	-----	0	-----
Pencyclopine (PCP, THC)	2	10.0	0	-----	1	2.9
Hallucinogens (any)	2	10.0	3	10.3	2	5.9
Mescaline	0	-----	0	-----	0	-----
LSD	1	5.0	3	10.3	2	5.9
Unspecified	1	5.0	0	-----	0	-----
Paint, Glue, and Cleaning Fluids	0	-----	0	-----	0	-----
Drugs, unspecified	1	5.0	1	3.4	5	14.7

*Two of these persons were actually sentenced to death at that time, but the death penalty law was later found to be unconstitutional.