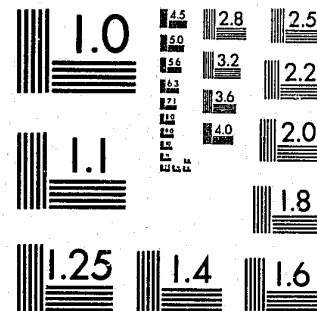


National Criminal Justice Reference Service

ncjrs

This microfiche was produced from documents received for inclusion in the NCJRS data base. Since NCJRS cannot exercise control over the physical condition of the documents submitted, the individual frame quality will vary. The resolution chart on this frame may be used to evaluate the document quality.



MICROCOPY RESOLUTION TEST CHART
NATIONAL BUREAU OF STANDARDS-1963-A

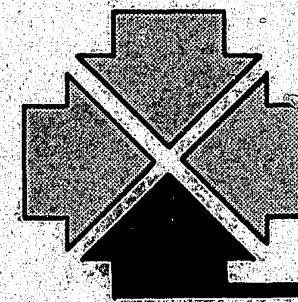
Microfilming procedures used to create this fiche comply with the standards set forth in 41CFR 101-11.504.

Points of view or opinions stated in this document are those of the author(s) and do not represent the official position or policies of the U. S. Department of Justice.

National Institute of Justice
United States Department of Justice
Washington, D. C. 20531

Date Filmed

12/16/81



EDMUND G. BROWN JR., Governor
STATE OF CALIFORNIA
OFFICE OF CRIMINAL JUSTICE PLANNING

THE IMPACT OF PROPOSITION 13

on local criminal justice agencies in california

First Report

(July 1, 1978 thru June 30, 1979)

July 30, 1979

72753₄



Office of Criminal Justice Planning

RAYMOND DAVIS
Chairman
California Council on Criminal Justice

DOUGLAS R. CUNNINGHAM
Executive Director

NATHAN W. MANSKE
Deputy Director
Planning & Operations

GREGORY W. HARDING
Deputy Director
Administration & Special Programs

PROJECT STAFF:

Max Wendel, Project Manager, OCJP

Dr. Lyle Knowles, Research Consultant

Gene K. Cartwright, Consultant, Peace Officers Standards
and Training Commission

Dean Fairchild, OCJP
Lilia Molina, OCJP

Marie Trafton, OCJP
Charlotte Waid, OCJP

The preparation of these materials was financially aided through a Federal grant from the Law Enforcement Assistance Administration and the Office of Criminal Justice Planning under the Omnibus Crime Control and Safe Streets Act of 1968, as amended. The opinions, findings and conclusions in this publication are those of the Office of Criminal Justice Planning and are not necessarily those of the Law Enforcement Assistance Administration.

7171 BOWLING DRIVE, SACRAMENTO, CALIFORNIA 95823 TEL. 916/445-9156

STATE OF CALIFORNIA

EDMUND G. BROWN JR., Governor

OFFICE OF CRIMINAL JUSTICE PLANNING

OFFICE OF THE DIRECTOR
7171 BOWLING DRIVE
SACRAMENTO, CALIFORNIA 95823



July 30, 1979

TO: Persons Interested in California's Local Criminal Justice System

On June 6, 1978, the day California voters overwhelmingly approved Proposition 13, this state's cities and counties were nearing completion in writing budgets for the fiscal year that would begin less than four weeks later, on July 1. Taken together, those local budgets represented plans to spend approximately \$1.2 billion in property tax revenues for law enforcement and other criminal justice operations for which cities and counties have responsibility. In simple terms, the passage of California's property tax limitation initiative meant that over 60% of that revenue was eliminated, amounting to a potential loss of about \$750 million from local criminal justice budgets.

According to a statewide survey which obtained 1977-78 and 1978-79 budget and personnel reports from agencies serving over 80% of the people of the State, aggregate local budgets for criminal justice actually increased by over \$10 million on the first year "post-Jarvis". While that slight increase fell far short of the rate of inflation, it permitted local criminal justice employers to keep their combined staffing levels at almost exactly the levels of the year that preceeded the property tax reduction. These are aggregate figures, however, and some localities and individual justice system units were not able to avoid damaging cuts.

Based on survey results relating to budget and staffing plans for the 1979-80 fiscal year, which has just begun, the total level of financial support for local criminal justice operations is expected to increase by just over six percent, but with staff reductions averaging almost two percent.

Many criminal justice leaders had opposed Proposition 13 because they knew their agencies had long depended mainly on money obtained through the property tax, and they were skeptical that replacement sources could be found. This report, the first of a series planned by OCJP, shows that Governor Brown, the Legislature and other state and local officials were fairly successful in finding those substitute dollars. Particularly in view of the short time between the June election and the start of the next fiscal year, that accomplishment must be acknowledged as a remarkable piece of state-craft, and one which has met the clear demands of the people of California that the strength and professionalism of their law enforcement and justice system be maintained.

As explained in the Introduction of this report, OCJP appreciates the great deal of help we received from a broad range of criminal justice interest groups in conducting our survey. Many organizations and individuals cooperated to design a data-collection effort that would produce a rich body of information, but without imposing an undue burden on the local officers who were to be the source of the statistics. We believe that effort has met with success, and OCJP urges others to join us in the on-going work of detailed analysis of that information.

We recognize that responding to repeated and often overlapping requests for statistical information can amount to a heavy burden on local agencies, especially during a time of transition and heightened research interest. Accordingly, OCJP invites local officials who have cooperated with our survey to simply refer other gatherers of statistics to us, when it appears their inquiries may be answered from data already furnished in our survey. Subject to the availability of staff, and to reasonable cost-sharing arrangements, if appropriate, OCJP assures all policy-makers and responsible researchers of our full cooperation, to the end that the work continuing to be invested in this body of information may yield significant and constructive results.

Questions dealing with this study should be directed to Nathan Manske at (916) 445-9156 or Max Wendel at (916) 445-1962.

Sincerely,



DOUGLAS R. CUNNINGHAM
Executive Director

Telephone: (916) 445-9156

DRC:an

TABLE OF CONTENTS

	<u>Page</u>
I. Introduction.....	1
II. Response to Survey.....	6
Expenditure and Personnel Trends.....	6
Format of Survey Tables.....	6
Expenditures.....	7
Personnel.....	11
Program Status.....	13
III. Summary.....	16
IV. Tables.....	18
V. Methodology.....	41
VI. Appendices.....	46

NCJRS

OCT 23 1980

ACQUISITIONS

TABLES

<u>Table</u>	<u>Title</u>	<u>Page</u>
1	California Agencies Responding to Proposition 13 Impact Survey by Type, Population, Number and Percentages	19
2	Statewide Criminal Justice Expenditures in California (Excluding the Courts), FYS 1968-69 Through 1977-78	21
3	Statewide Authorized Full-Time Personnel in California (Excluding the Courts), June 30, 1968 to June 30, 1977	22
4 A	Budget Expenditures - Total Budget, FYS 1977-78 and 1978-79	23
4 AX	Budget Expenditures - Total Budget, FYS 1977-78, 1978-79, and 1979-80, Excluding Agencies Not Reporting FY 1979-80 Estimates	24
5 A	Budget Expenditures - Personnel, FYS 1977-78 and 1978-79	25
5 AX	Budget Expenditures - Personnel, FYS 1977-78, 1978-79 and 1979-80, Excluding Agencies Not Reporting FY 1979-80 Estimates	26
5 B	Budget Expenditures - Operating, FYS 1977-78 and 1978-79	27
5 BX	Budget Expenditures - Operating, FYS 1977-78, 1978-79 and 1979-80, Excluding Agencies Not Reporting FY 1979-80 Estimates	28
6 A	Personnel - Total, FYS 1977-78 and 1978-79	29
6 AX	Personnel - Total, FYS 1977-78, 1979-79, and 1979-80, Excluding Agencies Not Reporting FY 1979-80 Estimates	30
6 B	Personnel - Professional, FYS 1977-78 and 1978-79	31
6 BX	Personnel - Professional, FYS 1977-78, 1978-79 and 1979-80, Excluding Agencies Not Reporting FY 1979-80 Estimates	32

I. INTRODUCTION

In addition to administering approximately \$30 million in Federal Law Enforcement Assistance Administration funds which come to California annually, the Penal Code also assigns the Office of Criminal Justice Planning (OCJP) with several additional duties, two of which are summarized below:

- To render technical assistance to the Legislature, State Agencies, units of general local and other organizations in matters relating to criminal justice and delinquency prevention.
- To collect, evaluate and disseminate statistics and other information on the condition and progress of criminal justice in the state.

Consistent with these statutory charges and in response to requests from several professional interest groups and state criminal justice and administrative agencies, OCJP conducted a survey between April and June, 1979 in an attempt to determine the impact of Proposition 13 and general fiscal limitations on ^{all} local criminal justice agencies throughout the State of California. Courts were not included in the survey because the Administrative Office of the Courts is collecting Proposition 13 impact data on the courts and OCJP did not wish to duplicate that effort. As part of the study, OCJP collected and analyzed changes in personnel positions,

<u>Table</u>	<u>Title</u>	<u>Page</u>
6 C	Personnel - Non-Professional, Excluding CETA, FYS 1977-78 and 1978-79	33
6 CX	Personnel - Non-Professional, Excluding CETA, FYS 1977-78, 1978-79 and 1979-80, Excluding Agencies Not Reporting FY 1979-80 Estimates	34
6 D	Personnel - CETA Only, FYS 1977-78 and 1978-79	35
6 DX	Personnel - CETA Only, FYS 1977-78, 1978-79 and 1979-80, Excluding Agencies Not Reporting FY 1979-80 Estimates	36
7 A	Program Status, FYS 1977-78 and 1978-79	37
7 AP	Program Status, FYS 1977-78 and 1978-79, Percentages Only	38
7 B	Reason For Change In Program Status, FYS 1977-78 and 1978-79	39
7 BP	Reason For Change In Program Status, FYS 1977-78 and 1978-79, Percentages Only	40

operating budgets and operating programs for the fiscal years (FY's) 1977-78, 1978-79 and 1979-80 (as proposed in preliminary budgets). In total, almost 1,000 questionnaires were sent to 574 agencies (both Police and Sheriff's Departments were sent two questionnaires, one for their law enforcement functions and one for their local corrections functions). This is a preliminary report of that survey.

OCJP is pleased to be able to release this report so promptly after the close of the state and local fiscal year which it primarily covers. This timeliness is largely due to the excellent cooperation of local government officials and criminal justice executives whose staffs bore the burden of providing the statistical raw material.

The data summaries presented are based upon a 56.5 percent questionnaire return representing an average of 86.2 percent of the statewide population served by the criminal justice agencies included in the study. The law enforcement agencies responding to the questionnaires represent approximately 82 percent of the state population served by municipal police and sheriffs. The questionnaires were comprehensive and the data collected both diverse and voluminous. In order to make this report available in a timely manner only the major categories of expenditures, personnel and programs have been compiled and analyzed. More detail for the above categories, as well as information on hiring and firing changes, unfilled positions, assignment changes and caseload data will be made in a supplemental report which OCJP plans to release within 90 days. Readers of this first report are invited to contact OCJP with specific questions relating to those more detailed data categories so that the supplemental report can be based on analyses that are

as responsive as possible to the needs of policymakers and researchers. In addition, two follow-up reports on later surveys will be issued. The first follow-up survey in the Fall of 1979 will give a retrospective overview of how local justice agencies fared in the 1979-80 budget process. An attempt will also be made to set forth some previews of what local criminal justice administrators will be requesting in their 1980-81 fiscal year budgets.

The questionnaires used in this study were developed by OCJP with the advice and assistance of a broad based Advisory Committee which was made up of representatives from the organizations listed below.

California Administrative Office of the Courts
California Commission on Peace Officers Standards and Training
California Department of Corrections
California Department of the Youth Authority
California District Attorneys Association
California District Attorneys Investigators Association
California Office of the Attorney General
California Peace Officers Association
California Peace Officers Research Association of California
California Police Chiefs Association
California Police Training Officers Association
California Probation, Parole and Correctional Association
California Public Defenders Association
California Regional Criminal Justice Planning Directors Association
California Sheriffs Association

In addition to the previously listed organizations, representatives of the California League of Cities, County Supervisors Association of California and State Department of Finance also participated in the questionnaire development process.

The following organizations also assisted in the data collection process by contacting those agencies belonging to their respective associations:

- California District Attorneys Association
- California League of Cities
- California Police Chiefs Association
- California Probation, Parole and Correctional Association
- California Public Defenders Association
- California Sheriffs Association
- County Supervisors Association of California
- Peace Officers Research Association of California

While the above organizations gave OCJP a great deal of help in planning and designing the survey, as well as obtaining a remarkable rate of prompt local agency response, OCJP is solely responsible for the tabulation and presentation of the data in the report and for the ongoing process of data analysis. OCJP recognizes that, when resource limitations are encountered in the public sector, a cut that one individual or group might characterize as having been made with a scalpel may be viewed by others as having been made with a meat axe. Accordingly, OCJP expects widely differing interpretations of the data presented in this report to be voiced by the very groups which joined to help in earlier stages of the survey.

The current preliminary report contains budgetary, personnel and program summaries for fiscal years 1977-78, 1978-79 and 1979-80 (estimates) for the following types of agencies: municipal police, sheriffs, district attorneys, public defenders, probation departments and local corrections.

For the purposes of this report, local corrections consists of adult detention operations at the county level, primarily jails operated by sheriffs. Questionnaires were sent to all such agencies in the state.

It is important to note that the 1979-80 summaries are based upon proposed budgets. In fact, over 15 percent of the agencies responding to the questionnaires did not report FY 1979-80 expenditure data on their questionnaire.

II. RESPONSE TO THE SURVEY

As shown in Table 1, 56.5 percent of the 574 California criminal justice agencies (excluding courts and court related agencies) responded to the survey. This represents an average of 86.2 percent of the statewide population served by these agencies.

The various agencies' response to the survey ranged from a low of 50 percent of the District Attorneys to a high of 65.5 percent of the probation departments. The proportion of the statewide population represented by those agencies varies somewhat from the agency responses with local corrections respondents representing a low of 78.85 percent of the state's population and probation departments representing a high of 91.41 percent. Without exception, the response was higher from the larger agencies in each of the agency types represented.

Expenditure and Personnel Trends

Tables 2 and 3 show ten-year trends for both expenditures and personnel for the criminal justice agencies surveyed. The tables will be referenced later and compared to similar categories in the survey questionnaires.

Format of Survey Tables

Many agencies did not respond to the portions of questions concerning 1979-80 data because their budget process was not yet complete for that data. If the tables had been constructed showing all three years of data

requested (FY's 1977-78, 1978-79 and 1979-80), a deceiving decrease between FY 1978-79 and FY 1979-80 would have been shown since many agencies had left the FY 1979-80 categories blank. For that reason, two tables are shown for each portion of each question. The first shows all responses to questionnaire items labelled FY 1977-78 and FY 1978-79. The second table, labelled like the first except for the addition of an X (i.e., first Table 4A and second Table 4 AX) shows data for FY's 1977-78, 1978-79 and 1979-80, but only for those agencies which had an entry in the FY 1979-80 columns. Thus, the first tables show relationships between FY 1977-78 and FY 1978-79 only for all reporting agencies while the second table represents relationships between all three fiscal years -- 1977-78, 1978-79 and 1979-80 -- but only for those agencies which included FY 1979-80 data.

It should also be noted that comparatively large percent changes are shown in some tables where the number of responding agencies was very small (e.g., Probation Departments serving populations under 50,000 include only 4 agencies). Such results should be considered with discretion.

Expenditure

Tables 4 A, 4 AX, 5 A, 5 AX, 5 B and 5 BX relate to budget and expenditure data. Tables 4 A and 4 AX show total budgets; Tables 5 A and 5 AX show personnel expenditures; Tables 5 B and 5 BX relate to operating expenditures. Only personnel and operating expenditures are included in this report because these two types represent over 97 percent of the total budget.

Local Criminal Justice Agencies experienced a relative decrease in total expenditures in the year following passage of Proposition 13. Based on the California Controller's Office data shown in Table 2, the average percent per year increase in total local criminal justice budgets (excluding courts) was 14 percent for the ten years preceeding passage of Proposition 13. The percent increase in total expenditures between FY 1977/78 and FY 1978/79 for the agencies responding to the survey was less than 1 percent. Thus, the latter 1 percent change is considered a relative decrease.

Department of Finance (California) data on statewide population estimates indicate an increase in population of 1.01 percent between FY 1977-78 and FY 1978-79, while the state's Employment Development Department (EDD) reported an inflation rate of 9.40 percent for the same period.

As the percent change column in Table 4 A indicates, Probation Departments were the only agency type in which the total group showed a decline in total expenditures between FY 1977-78 and FY 1978-79, with a decrease of over 4 percent. The largest decline, 20.60 percent, was reported by local correctional agencies representing populations between 50,000 and 249,999. District Attorneys reflected a consistent increase for all three population groups at just over 6 percent.

Comparing prior year data (Table 2) by agency type with Table 4 A reveals that all agency types reported relative decreases. The comparisons between the average percent change in total expenditures over a ten-year period with the percent change reported between FY 1977-78 and FY 1978-79 by agency were as follows:

Agency	Yearly Percent Change In Total Expenditures	
	Ten-year Average	One-year Survey Results
Police Departments	13.31	+ 1.03
Sheriff's Departments	15.04	+ 0.29
District Attorneys	19.88	+ 6.32
Public Defenders	23.62	+ 1.57
Probation Departments	12.88	- 4.31
Local Corrections*	13.20	+ 4.77

*Local corrections questionnaires were sent to all sheriffs, police and county correctional departments. The responses received from police departments, with few exceptions, reported their having only short-term lockups (less than 48 hours), or none at all, and transferring their prisoners to county facilities as soon as possible. For that reason, city correctional data were not included in this report.

Table 4 A also reveals that, with the exception of local correctional agencies, the larger agencies (over 250,000 population) consistently reported the smallest increases in expenditures between FY 1977-78 and FY 1978-79.

Table 4 AX adds the FY 1979-80 expenditure projections made by reporting agencies. It should be remembered, however, that these are reported budget requests in most instances, not approved budgets, and are subject to adjustments by County Boards of Supervisors and City Councils. It should also be noted that 54 (15.1 percent) of the 357 agencies reporting expenditure data for FY 1977-78 and FY 1978-79 (Table 4 A) did not report FY 1979-80 estimates.

Table 4 AX reveals a projected increase of 6.06 percent in total budgets for all reporting criminal justice agencies between FY 1978-79 and FY 1979-80.

less than half of the average for the ten years prior to passage of Proposition 13.

The personnel expenditure data shown in Table 5A reveal similar trends to those previously cited in Table 4 A for total expenditures. The percentage change between FY 1977-78, and FY 1979-80 was also fairly similar, although one group, sheriffs - law enforcement, shows a small decrease rather than a small increase. Table 5 AX shows proposed increases in personnel expenditures for FY 1979-80 for all agencies which reported FY 1979-80 estimates. Police and probation departments reported increases of only 3 percent while the other agencies were all closer to a 10 percent increase. Only two groups expected decreases -- police departments in cities with over 250,000 population, -1.39 percent; and public defenders in counties with less than 50,000 population, -2.05 percent.

Although the reported net increase in operating expenditures of 1.35 percent between FY's 1977-78 and 1978-79 (Table 5 B) was very similar to the personnel expenditure increase of 1.29 percent (Table 5 A), changes in specific agencies varied considerably, with the exception of local correctional agencies. The following table shows these differences:

Agency Type	Percent Change in Personnel Expenditures FY 1977-78 to FY 1978- 79 (Table 5 A)	Percent Change in Operating Expenditures FY 1977-78 to FY 1978- 79 (Table 5 B)
Total	1.29	1.35
Police Departments	1.31	- 0.76
Sheriffs' Departments	- 0.67	8.74
District Attorneys	5.67	13.62
Public Defenders	1.05	- 4.88
Probation Departments	- 1.82	- 13.42
Local Corrections	11.67	10.54

Table 5 BX shows that respondents who included FY 1979-80 data planned to increase their operating expenditures almost three times as much as was true of their personnel expenditures between FY 1978-79 and FY 1979-80; that is, a 4.62 percent increase in personnel expenditures and a 13.21 percent increase in operating expenditures. Only one group, sheriffs - law enforcement, indicated a projected decrease for the coming fiscal year, a drop of 4.73 percent.

Personnel

Tables 6 A through D and 6 AX through DX are concerned with reported numbers of personnel in agencies responding to the survey. Tables 6 A and 6 AX show total numbers of personnel; Tables 6 B and 6 BX, professional personnel; Tables 6 C and 6 CX, non-professional personnel excluding CETA; and Tables 6 D and 6 DX, CETA personnel.

Local criminal justice agencies responding to the survey showed a slight reduction in staff (0.32 percent) between FY 1977-78 and FY 1978-79, as shown on Table 6 A. This compares to an average yearly increase of 3.88 percent for the nine years prior to the passage of Proposition 13 (Table 3 - comparisons for ten years were not available for all agencies). Similar comparisons of five of the six agencies follow:

<u>Agency</u>	<u>Yearly Percent Change In Total Personnel</u>	
	<u>Nine-Year Average</u>	<u>Survey Results</u>
Total	3.88	- 0.32
Police Departments	2.32	0.93
Sheriff's Departments*	Not Available	Not Available
District Attorneys	11.21	4.76
Public Defenders	7.87	- 0.05
Probation Departments	4.84	- 6.36
Local Corrections*	Not Available	Not Available
Total Sheriffs	4.54	0.41

*Not available separately -- combined with total Sheriffs' Personnel

As was true of expenditure data, Probation Departments reported the largest decrease, 6.36 percent, between FY 1977-78 and FY 1978-79. In addition, both Sheriffs - Law Enforcement and Public Defenders reported small decreases in personnel of less than 1 percent.

Table 6 AX adds the FY 1979-80 projection for personnel. The same precautions regarding changes by County Boards of Supervisors and City Councils hold true for this table. More agencies appeared to know their personnel projections than was true of expenditures and only 22 (6.46 percent) of the 344 agencies reporting personnel data did not report FY 1979-80 personnel data. Contrary to the expenditure projection of an increase between FY 1978-79 and FY 1979-80, personnel projections show a decrease of 1.86 percent. The major reasons for the decrease appear to be substantial reductions in personnel for both Police Departments and Probation Departments and, specifically, the larger police and probation jurisdictions (serving populations over 250,000). Large police departments predict a 9.56 percent drop in personnel in FY 1979-84, while large probation departments predict a 2.06 percent decline.

The tables on professional (6 B, 6 BX) and non-professional (6 C, 6 CX) personnel reveal much the same trend as that shown for total personnel, i.e., large decreases between FY 1977-78 and FY 1978-79 in Probation Department and large Police Department personnel, small decreases in Sheriff's Department and Public Defender personnel. One difference is shown in Public Defenders' non-professional personnel (Table 6 C) which shows a relatively large decrease (6.92 percent).

Table 6 D shows a very sharp increase, 10.10 percent, in the use of CETA personnel between FY 1977-78 and FY 1978-79. This is reflected in all agencies except Sheriff's Departments - Law Enforcement, which reported a decrease of 4.48 percent. The data on CETA personnel for all three fiscal years (Table 6 DX), which shows very drastic projected cuts, is apparently a reflection of changes in federal policy regarding public agency use of CETA personnel rather than any impact Proposition 13 may have had.

As was true of Table 6 AX on Total Personnel for FY 1979-80 data, both professional and non-professional personnel showed a large projected decrease in large police departments and, to a lesser degree, in large probation departments.

Program Status

Respondents to the survey were asked to indicate what happened to major programs related to their specific agency between FY 1977-78 and FY 1978-79. Each agency had its own set of programs ranging from 8 for local corrections to 14 for probation departments. (See Appendix A for listings of programs.) Due to time constraints, it is not possible to evaluate each one of these programs for each type of agency at this time.

Tables 7 A and 7 AP display all responses from all agencies for all program status questions. The result is an overview of the general patterns of what happened to all programs between FY 1977-78 and FY 1978-79. Table 7 A provides a raw frequency count and Table 7 AP shows the data in percentages.

The percentages shown in Table 7 AP indicate that the majority of programs for all agencies combined remained unchanged, 65.35 percent. The total responses show that slightly more programs were reduced (15.51 percent) than expanded (14.02 percent). The same is true of programs eliminated (2.57 percent) compared to new programs (2.39 percent). Agency type followed the trend of little change, except for probation departments and local correctional agencies. The latter two showed opposing trends with probation departments reducing (25.54 percent) and eliminating (4.42 percent) programs drastically compared to only 1.82 percent reduction and 1.82 percent elimination of programs by local corrections. On the opposite tack, local corrections was expanding programs (15.85 percent) and using new programs (4.26 percent) to a greater extent than the other agencies. Probation departments, on the other hand, reported only a 9.65 percent response to expansion of programs and a 2.21 percent response to the use of new programs.

Tables 7 B and 7 BP display the responses from all agencies to the reasons for changes in program status. Only three possible responses were requested: 1) funds, 2) personnel, and 3) equipment and the responses were generally limited to one or a combination of the three. A few different responses were made by respondents but they were minimal. These tables are similar to Tables 7 A and 7 AP in that they present an overview of the general pattern of responses for changes in program status and do not reflect responses to individual programs, again due to time constraints.

The percentages shown in Table 7 BP indicate that funding and personnel were the major reasons for the program changes, totaling over 89 percent

of responses. Funding and personnel were evenly distributed as reasons for changes, as indicated by the responses of 33.49 and 33.58 percent respectively, of total responses. Equipment, the other alternative presented, showed very small response proportions.

III. SUMMARY

Agencies responding to the OCJP Proposition 13 Impact Survey conducted by OCJP between April and June, 1979, indicated a very pronounced leveling off in both expenditures and personnel in the year following passage of Proposition 13 compared to the continued increases in both categories during the previous nine to ten years. Aggregate local criminal justice budget expenditures during FY 1978-79 were two-thirds of one percent higher than in 1977-78; total personnel between those two fiscal years was one-third of one percent lower. California's local criminal justice agencies were, on a statewide basis, thus spared the severe budget and personnel cuts which had been expected to result from Proposition 13's drastic reduction of property tax revenues, the predominant historic source of their financial support. Nevertheless, inflation also reduced the purchasing power of criminal justice agency budget dollars while crime rates continued to increase, with the result that police, sheriffs, prosecutors, public defenders, probation and local corrections were faced with a larger job to be done, but with fewer resources.

Projections into the following year, FY 1979-80, seem to reflect a hopeful trend toward expenditures but a continued negative one regarding personnel. Anticipated total spending will apparently increase about 6 percent in FY 1979-80; total staffing will be reduced almost 2 percent. Projections for FY 1979-80 budgets had not been finally approved by local governments at the time they were reported to OCJP (April to June, 1979).

Criminal justice agency programs also seem to have been either curtailed slightly or remained at the same levels as previous years. However, no comparisons are available for program-by-program activities prior to FY 1977-78, resulting in only a two-year comparison.

IV. TABLES

TABLE 1, CALIFORNIA AGENCIES RESPONDING TO PROPOSITION 13 IMPACT SURVEY¹
BY TYPE, POPULATION, NUMBER AND PERCENTAGE

	STATEWIDE POPULATION TOTALS 1/1/78	AGENCIES RESPONDING POPULATION TOTALS 1/1/78	PERCENT OF STATE POPULATION REPRESENTED	NUMBER OF AGENCIES STATEWIDE	NUMBER OF AGENCIES RESPONDING	PERCENT OF AGENCIES RESPONDING
Total Agencies	N/A	N/A	N/A	632	357	56.49
Over 250,000 Population	N/A	N/A	N/A	87	76	87.36
50,000 - 249,999 Population	N/A	N/A	N/A	149	98	65.77
Under 50,000 Population	N/A	N/A	N/A	396	183	46.21
Total Law Enforcement (Police and Sheriffs)	21,783,925	18,001,295	82.64	412	233	56.55
Over 250,000 Population	9,465,585	8,842,475	93.42	15	13	86.67
50,000 - 249,999 Population	7,942,035	6,371,550	80.23	82	65	79.27
Under 50,000 Population	4,376,305	2,787,270	63.69	315	155	49.21
Police Departments ²	15,406,240	12,814,740	83.18	354	199	56.21
Over 250,000 Population	5,848,600	5,504,400	94.11	7	6	85.71
50,000 - 249,999 Population	5,797,300	4,771,600	82.31	62	51	82.26
Under 50,000 Population	3,760,340	2,538,740	67.51	285	142	49.82
Sheriffs - Law Enforcement ²	6,377,685	5,186,555	81.32	58	34	58.62
Over 250,000 Population	3,616,985	3,338,075	92.29	8	7	87.50
50,000 - 249,999 Population	2,144,735	1,599,950	74.60	20	14	70.00
Under 50,000 Population	615,965	248,530	40.35	30	13	43.33
District Attorneys	21,783,925	19,419,220	89.14	58	29	50.00
Over 250,000 Population	19,006,650	18,420,350	96.92	18	17	94.44
50,000 - 249,999 Population	2,258,200	868,200	38.45	18	8	44.44
Under 50,000 Population	519,075	130,670	25.17	22	4	18.18

¹Survey was conducted between April and June, 1979.

²Does not include contract cities.

TABLE 1. CALIFORNIA AGENCIES RESPONDING TO PROPOSITION 13 IMPACT SURVEY
BY TYPE POPULATION, NUMBER AND PERCENTAGE (Continued)

	STATEWIDE POPULATION TOTALS 1/1/78	AGENCIES RESPONDING POPULATION TOTALS 1/1/78	PERCENT OF STATE POPULATION REPRESENTED	NUMBER OF AGENCIES STATEWIDE	NUMBER OF AGENCIES RESPONDING	PERCENT OF AGENCIES RESPONDING
Public Defenders	21,451,545	19,107,620	89.07	46	27	58.70
Over 250,000 Population	19,006,650	18,340,150	96.49	18	17	94.44
50,000 - 249,999 Population	2,094,400	694,400	33.16	15	6	40.00
Under 50,000 Population	350,495	73,070	20.85	13	4	30.77
Probation Departments	21,783,925	19,911,750	91.41	58	38	65.52*
Over 250,000 Population	19,006,650	18,144,450	95.46	18	16	88.89
50,000 - 249,999 Population	2,258,200	1,500,600	66.45	17	11	64.71
Under 50,000 Population	519,075	266,700	51.38	23	11	47.83
Local Corrections ³	21,783,925	17,177,500	78.85	58	30	51.72
Over 250,000 Population	19,006,650	15,673,050	82.46	18	13	72.22
50,000 - 249,999 Population	2,258,200	1,274,100	56.42	17	8	47.06
Under 50,000 Population	519,075	230,350	44.38	23	9	39.13

³ Includes County Correctional Agencies not operated by Sheriffs.

TABLE 2, STATEWIDE CRIMINAL JUSTICE EXPENDITURES IN CALIFORNIA
(Excluding the Courts)

Fiscal Year	Total	Law Enforcement Subtotal	Sheriff's Departments	Police Departments	Prosecution	Public Defense	Local Corrections Subtotal	Jails and Rehabilitation	Probation Departments
1977-78	\$1,767,230	\$1,225,810	\$356,287	\$ 852,245	\$ 128,716	\$ 47,387	\$392,595	\$ 126,576	\$256,019
1976-77	1,574,347	1,106,029	316,594	775,264	93,364	37,018	352,107	114,815	237,292
1975-76	1,426,550	991,669	284,193	699,830	76,426	34,528	331,573	110,412	221,161
1974-75	1,237,231	865,402	257,869	602,521	67,162	29,555	280,124	97,405	182,719
1973-74	1,087,417	765,462	226,559	534,373	58,073	25,238	243,174	87,131	156,043
1972-73	957,170	668,591	188,098	480,146	49,547	21,786	217,593	76,636	140,957
1971-72	851,323	592,357	164,052	428,057	42,655	17,753	198,180	68,128	130,678
1970-71	728,542	506,030	137,332	368,698	35,724	13,806	172,982	58,366	114,616
1969-70	618,932	433,286	115,738	317,548	28,838	9,387	147,421	51,984	95,437
1968-69	530,654	372,654	98,033	274,621	24,618	6,847	126,535	45,274	81,261
-12- Average Percent Change Per Year Over 10-Year Period	14.10	13.78	15.04	13.31	19.88	23.62	12.95	13.20	12.88
Percent Change in Number From									
1968-1978	273.29	262.90	304.01	248.22	503.93	700.28	235.90	242.85	232.03
1977-78	12.08	11.90	11.16	12.21	15.51	15.63	11.09	22.63	5.39
1976-77	12.25	10.69	12.50	9.93	37.86	28.01	8.66	10.24	7.89
1975-76	10.36	10.96	11.40	10.78	22.16	7.21	6.19	3.99	7.29
1974-75	15.30	14.37	10.21	16.15	13.79	16.83	18.37	13.35	21.04
1973-74	13.78	13.07	13.82	12.75	15.65	17.11	15.19	11.79	17.10
1972-73	13.61	13.87	20.45	11.29	17.21	15.85	11.76	13.69	10.70
1971-72	12.43	12.86	14.66	12.17	16.16	22.72	9.80	12.49	7.87
1970-71	16.85	17.01	19.46	16.10	19.40	28.59	14.57	16.73	14.01
1969-70	17.71	16.79	18.66	16.11	23.88	47.08	17.34	12.28	20.10
1968-69	16.69	16.27	18.06	15.63	17.14	37.10	16.51	14.82	17.45

TABLE 3, STATEWIDE AUTHORIZED FULL-TIME PERSONNEL, CALIFORNIA
(Excluding the Courts)

June 30, 1968 - June 30, 1977

Fiscal Year	Total	Law Enforcement Subtotal	Sheriff's Departments	Police Departments	Prosecution ¹	Public Defense	Probation Departments
1977-78	\$ 77,519	\$ 58,320	\$ 21,309	\$ 37,011	\$ 6,786	\$ 1,782	\$ 10,631
1976-77	75,071	56,283	20,253	36,030	6,159	1,679	10,950
1975-76	73,066	56,161	19,915	36,246	4,852	1,574	10,479
1974-75	69,486	53,772	18,961	34,811	4,329	1,559	9,826
1973-74	66,623	51,650	18,173	33,477	4,416	1,385	9,172
1972-73	63,760	50,327	17,461	32,866	3,406	1,236	8,791
1971-72	62,428	49,536	17,215	32,321	3,227	1,120	8,545
1970-71	58,285	47,123	15,950	31,173	2,506	929	7,727
1969-70	54,206	43,757	14,289	29,468	2,786	914	6,749
1968-69	N/A	41,194	13,116	28,078	N/A	N/A	6,291
-22- Average Percent Change Per Year Over a 9 Year Period ²	3.88	3.09	4.54	2.32	11.21	7.87	4.84
Percent Change in Number From							
1969-78	40.42	31.12	48.47	22.70	142.86	94.75	51.12
1977-78	- 1.81	- 1.62	- 0.44	- 2.30	- 0.29	- 0.11	- 4.06
1976-77	3.26	3.62	5.21	2.72	10.18	6.13	- 2.91
1975-76	2.74	0.22	1.70	- 0.60	26.94	6.67	4.49
1974-75	5.15	4.44	5.03	4.12	12.08	0.96	6.65
1973-74	4.30	4.11	4.34	3.98	- 1.97	12.56	7.13
1972-73	4.49	2.63	4.08	1.86	29.65	12.06	4.33
1971-72	2.13	1.60	1.43	1.69	5.55	10.36	2.88
1970-71	7.11	5.12	7.93	3.68	28.77	20.56	10.59
1969-70	7.52	7.69	11.62	5.79	-10.05	1.64	14.49

1. Includes Child Support Personnel after 1975.
2. 1968 data not complete for all agencies.

QUESTION ASKED:

Please provide your agency's total authorized budget for fiscal years 1977-78, 1978-79 and 1979-80.

TABLE 4A BUDGET EXPENDITURES - TOTAL
FYS 1977-78 and 1978-79
ALL DATA
QUESTION 01

Agency Type and Population	No. of Agencies Reporting	FY 1977-1978	FY 1978-1979	PERCENT CHANGE FY 1977-78 to FY 1978-79
TOTAL	352*	1,747,107,617	1,758,735,501	.67
Police - Law Enforcement	199	804,601,454	812,898,786	1.03
Over 250,000 Population	6	415,534,418	407,005,086	-2.04
50,000 - 249,999 Population	50	264,752,491	275,618,611	4.10
Under 50,000 Population	143	124,314,545	130,275,089	4.79
Sheriffs - Law Enforcement	34	388,773,398	389,885,771	.29
Over 250,000 Population	7	261,373,049	256,708,114	-1.77
50,000 - 249,999 Population	14	110,303,602	114,102,004	3.44
Under 50,000 Population	13	17,096,747	19,075,653	11.57
District Attorneys	29	115,314,787	122,608,248	6.32
Over 250,000 Population	17	108,618,827	115,478,838	6.32
50,000 - 249,999 Population	8	5,789,377	6,159,412	6.39
Under 50,000 Population	4	906,583	969,998	6.99
Public Defenders	25	46,912,937	47,648,625	1.57
Over 250,000 Population	16	45,273,683	45,816,346	1.20
50,000 - 249,999 Population	6	1,545,671	1,720,932	11.34
Under 50,000 Population	3	93,583	111,347	18.98
Probation Departments	38	269,282,951	257,642,565	-4.31
Over 250,000 Population	16	249,906,350	237,914,995	-4.79
50,000 - 249,999 Population	11	16,648,937	16,680,375	.19
Under 50,000 Population	11	2,727,664	3,047,195	11.71
Local Corrections	26*	122,222,090	128,051,506	4.77
Over 250,000 Population	12	104,735,024	113,635,976	8.50
50,000 - 249,999 Population	7	15,378,410	12,208,741	-20.60
Under 50,000 Population	7	2,108,656	2,206,789	4.65

*Agencies responding to the local corrections questionnaires were all Sheriffs' Departments who also responded to the law enforcement questionnaire. The total number of agencies reporting, therefore, reflects a "double count" of Sheriffs' Departments.

QUESTION ASKED:

Please provide your agency's total authorized budget for fiscal years 1977-78, 1978-79 and 1979-80.

TABLE 4 AX, BUDGET EXPENDITURES - TOTAL BUDGET
FYS 1977-78, 1978-79 and 1979-80
AGENCIES NOT REPORTING 1979-80 ESTIMATES EXCLUDED
QUESTION 01

Agency Type and Population	No. of Agencies Reporting	FY			PERCENT CHANGE	
		1977-1978	1978-1979	1979-1980	FY 1977-78 To FY 1978-79	FY 1978-79 To FY 1979-80
TOTAL	298*	1,362,208,301	1,372,592,302	1,455,716,553	.76	6.06
Police - Law Enforcement	170	734,988,875	746,042,792	782,711,031	1.50	4.92
Over 250,000 Population	5	378,472,065	372,441,777	372,135,024	-1.58	-.07
50,000 - 249,999 Population	46	245,071,708	256,857,056	280,153,449	4.81	9.07
Under 50,000 Population	119	111,445,102	116,743,959	130,422,558	4.75	11.72
Sheriffs - Law Enforcement	26	162,147,518	166,930,022	181,094,131	2.95	8.49
Over 250,000 Population	5	91,244,286	92,629,276	99,585,489	1.52	7.51
50,000 - 249,999 Population	10	58,085,766	60,202,129	65,368,252	3.64	8.58
Under 50,000 Population	11	12,817,466	14,098,617	16,140,390	10.00	14.48
District Attorneys	27	114,154,150	121,362,825	131,075,148	6.31	8.00
Over 250,000 Population	17	108,618,827	115,478,838	124,384,713	6.32	7.71
50,000 - 249,999 Population	6	4,628,740	4,913,989	5,544,160	6.16	12.82
Under 50,000 Population	4	906,583	969,998	1,146,275	6.99	18.17
Public Defenders	20	27,367,176	28,513,701	31,553,481	4.19	10.66
Over 250,000 Population	13	26,363,462	27,426,030	30,294,644	4.03	10.46
50,000 - 249,999 Population	4	910,131	976,324	1,102,895	7.27	12.96
Under 50,000 Population	3	93,583	111,347	155,942	18.98	40.05
Probation Departments	35	266,042,264	254,414,150	263,684,997	-4.36	3.64
Over 250,000 Population	17	249,906,350	237,914,995	246,253,264	-4.79	3.50
50,000 - 249,999 Population	9	14,701,564	14,648,608	15,639,748	-.35	6.77
Under 50,000 Population	9	1,434,350	1,850,547	1,791,985	29.02	-3.15
Local Corrections	20*	57,508,318	55,328,812	65,597,765	-3.78	18.56
Over 250,000 Population	8	41,515,612	42,813,414	47,884,907	3.13	11.85
50,000 - 249,999 Population	6	14,122,155	10,533,116	15,611,350	-25.40	48.21
Under 50,000 Population	6	1,870,551	1,982,282	2,101,508	5.97	6.01

*Agencies responding to the local corrections questionnaires were all Sheriffs' Departments who also responded to the law enforcement questionnaire. The total number of agencies reporting, therefore, reflects a "double count" of Sheriffs' Departments.

QUESTION ASKED:

Please provide your agency's total personnel expenditures for fiscal years 1977-78, 1978-79 and 1979-80.

TABLE 5 A, BUDGET EXPENDITURES - PERSONNEL
FYS 1977-78 and 1978-79
ALL DATA
QUESTION 02A

Agency Type and Population	No. of Agencies Reporting	FY 1977-1978	FY 1978-1979	PERCENT CHANGE FY 1977-78 to FY 1978-79
TOTAL	345 *	1,465,889,537	1,484,739,603	1.29
Police - Law Enforcement	197	711,042,738	720,348,225	1.31
Over 250,000 Population	6	385,848,870	378,184,336	-1.98
50,000 - 249,999 Population	50	223,441,231	235,040,351	5.19
Under 50,000 Population	141	101,752,637	107,123,538	5.28
Sheriffs - Law Enforcement	33	310,518,429	308,419,755	-.67
Over 250,000 Population	6	215,612,344	209,192,707	-2.97
50,000 - 249,999 Population	14	82,072,426	84,988,199	3.55
Under 50,000 Population	13	12,833,659	14,238,849	10.95
District Attorneys	29	101,950,612	107,731,762	5.67
Over 250,000 Population	17	96,374,657	101,673,460	5.50
50,000 - 249,999 Population	8	4,798,530	5,223,615	8.86
Under 50,000 Population	4	777,425	834,687	7.37
Public Defenders	21	41,096,438	41,529,523	1.05
Over 250,000 Population	15	39,714,131	40,063,371	.88
50,000 - 249,999 Population	5	1,323,347	1,399,290	5.74
Under 50,000 Population	1	58,960	66,862	13.40
Probation Departments	38	220,300,830	216,276,799	-1.82
Over 250,000 Population	16	205,483,944	201,021,548	-2.16
50,000 - 249,999 Population	11	12,770,536	13,071,974	2.36
Under 50,000 Population	11	2,046,350	2,183,277	6.69
Local Corrections	26*	80,980,490	90,433,539	11.67
Over 250,000 Population	12	73,067,065	81,448,403	11.47
50,000 - 249,999 Population	7	6,500,416	7,537,653	15.96
Under 50,000 Population	7	1,413,009	1,447,483	2.44

*Agencies responding to the local corrections questionnaires were all Sheriffs' Departments who also responded to the law enforcement questionnaire. The total number of agencies reporting, therefore, reflects a "double count" of Sheriffs' Departments.

QUESTION ASKED:

Please provide your agency's total personnel expenditures for fiscal years 1977-78, 1978-79 and 1979-80

TABLE 5 AX, BUDGET EXPENDITURES - PERSONNEL
FYS 1977-78, 1978-79 and 1979-80
AGENCIES NOT REPORTING 1979-80 ESTIMATES EXCLUDED
QUESTION 02A

Agency Type and Population	No. of Agencies Reporting	FY 1977-1978	FY 1978-1979	FY 1979-1980	PERCENT CHANGE	
					FY 1977-78 To FY 1978-79	FY 1978-79 To FY 1979-80
TOTAL	290*	1,139,519,773	1,161,180,169	1,214,785,759	1.90	4.62
Police - Law Enforcement	166	646,491,497	658,186,946	677,626,702	1.81	2.95
Over 250,000 Population	5	351,580,262	347,418,107	342,555,244	-1.17	-1.39
50,000 - 249,999 Population	45	203,898,029	214,947,765	231,287,500	5.42	7.60
Under 50,000	116	91,013,206	95,821,074	103,783,958	5.28	8.31
Sheriffs - Law Enforcement	25	117,782,273	121,937,418	134,455,391	3.53	10.27
Over 250,000 Population	4	65,679,024	67,142,661	74,441,738	2.23	10.87
50,000 - 249,999 Population	10	42,473,912	44,365,548	48,182,011	4.45	8.60
Under 50,000 Population	11	9,629,337	10,429,209	11,831,642	8.31	13.45
District Attorneys	27	100,961,058	106,709,131	115,390,712	5.69	8.14
Over 250,000 Population	17	96,374,657	101,673,460	109,783,413	5.50	7.98
50,000 - 249,999 Population	6	3,808,976	4,200,984	4,664,648	10.29	11.04
Under 50,000 Population	4	777,425	834,687	942,651	7.37	12.93
Public Defenders	17	22,562,180	23,499,825	25,861,264	4.16	10.05
Over 250,000 Population	12	21,685,736	22,576,182	24,823,895	4.11	9.96
50,000 - 249,999 Population	4	817,484	856,781	971,887	4.81	13.43
Under 50,000 Population	1	58,960	66,862	65,482	13.40	-2.05
Probation Departments	35	217,906,578	213,714,148	220,093,480	-1.91	2.98
Over 250,000 Population	17	205,483,944	201,021,548	206,361,574	-2.16	2.66
50,000 - 249,999 Population	9	11,302,577	11,483,121	12,425,693	1.60	8.21
Under 50,000 Population	9	1,120,057	1,209,479	1,306,213	7.98	8.00
Local Corrections	20*	33,816,187	37,132,701	41,358,210	9.81	11.38
Over 250,000 Population	8	26,777,929	29,381,042	32,006,098	9.72	8.93
50,000 - 249,999 Population	6	5,784,600	6,453,486	8,025,489	11.56	24.36
Under 50,000 Population	6	1,253,658	1,298,173	1,326,623	3.55	2.19

*Agencies responding to the local corrections questionnaires were all Sheriffs' Departments who also responded to the law enforcement questionnaire. The total number of agencies reporting, therefore, reflects a "double count" of Sheriffs' Departments.

QUESTION ASKED:

Please provide your agency's total operating expenditures for fiscal years 1977-78, 1978-79 and 1979-80.

TABLE 5 B, BUDGET EXPENDITURE - OPERATING
FYS 1977-78 and 1978-79
ALL DATA
QUESTION 02B

Agency Type and Population	No. of Agencies Reporting	FY 1977-1978	FY 1978-1979	PERCENT CHANGE FY 1977-78 to FY 1978-79
TOTAL	343*	229,995,479	233,097,338	1.35
Police - Law Enforcement	196	76,799,701	76,211,462	-.76
Over 250,000 Population	6	22,202,959	21,774,520	-1.92
50,000 - 249,999 Population	49	36,219,743	35,635,221	-1.60
Under 50,000 Population	141	18,376,999	18,801,721	2.31
Sheriffs - Law Enforcement	33	57,265,069	62,267,979	8.74
Over 250,000 Population	6	29,554,522	33,255,855	12.52
50,000 - 249,999 Population	14	23,858,693	24,624,482	3.21
Under 50,000 Population	13	3,851,854	4,387,642	13.91
District Attorneys	28	11,894,463	13,514,687	13.62
Over 250,000 Population	16	10,781,803	12,451,104	15.48
50,000 - 249,999 Population	8	983,502	928,272	-5.61
Under 50,000 Population	4	129,158	135,311	4.76
Public Defenders	21	4,724,450	4,493,439	-4.88
Over 250,000 Population	15	4,561,303	4,315,059	-5.39
50,000 - 249,999 Population	5	154,324	167,895	8.79
Under 50,000 Population	1	8,823	10,485	18.84
Probation Departments	39	46,152,064	39,954,263	-13.42
Over 250,000 Population	17	41,882,480	35,919,021	-14.23
50,000 - 249,999 Population	11	3,705,824	3,514,999	-5.14
Under 50,000 Population	11	563,760	520,243	-7.71
Local Corrections	26*	33,159,732	36,655,508	10.54
Over 250,000 Population	12	28,701,224	31,531,373	9.86
50,000 - 249,999 Population	7	3,856,261	4,474,789	16.04
Under 50,000 Population	7	602,247	649,346	7.82

*Agencies responding to the local corrections questionnaires were all Sheriffs' Departments who also responded to the law enforcement questionnaire. The total number of agencies reporting, therefore, reflects a "double count" of Sheriffs' Departments.

QUESTION ASKED:

Please provide your agency's total operating expenditures for fiscal years 1977-78, 1978-79 and 1979-80.

TABLE 5 BX, BUDGET EXPENDITURE - OPERATING
FYS 1977-78, 1978-79 and 1979-80
AGENCIES NOT REPORTING 1979-80 ESTIMATES EXCLUDED
QUESTION 02B

Agency Type and Population	No. of Agencies Reporting	FY			PERCENT CHANGE	
		1977-1978	1978-1979	1979-1980	FY 1977-78 To FY 1978-79	FY 1978-79 To FY 1979-80
TOTAL	289 *	172,984,229	171,753,253	194,449,455	-.70	13.21
Police - Law Enforcement	166	68,816,041	68,283,784	84,327,627	-.76	23.50
Over 250,000 Population	5	19,586,753	18,167,355	23,174,585	-7.24	27.56
50,000 - 249,999 Population	45	32,853,837	33,463,445	40,674,689	1.86	21.55
Under 50,000 Population	116	16,375,451	16,652,984	20,478,353	1.69	22.97
Sheriffs - Law Enforcement	25	27,504,973	30,069,525	31,230,226	9.32	3.86
Over 250,000 Population	4	9,359,079	11,227,063	10,694,797	19.96	-4.73
50,000 - 249,999 Population	10	15,256,429	15,517,945	16,819,656	1.71	8.39
Under 50,000 Population	11	2,889,465	3,324,517	3,715,773	15.06	11.77
District Attorneys	26	11,725,730	13,293,270	14,105,057	13.37	6.11
Over 250,000 Population	16	10,781,803	12,451,104	13,046,461	15.48	4.78
50,000 - 249,999 Population	6	814,769	706,855	854,972	-13.23	20.95
Under 50,000 Population	4	129,158	135,311	203,624	4.76	50.49
Public Defenders	17	3,781,147	3,582,008	3,976,317	-5.26	11.01
Over 250,000 Population	12	3,682,677	3,455,727	3,803,549	-6.15	10.07
50,000 - 249,999 Population	4	89,647	115,796	127,308	29.17	9.94
Under 50,000 Population	1	8,823	10,485	45,460	18.84	333.57
Probation Departments	35	45,424,334	39,290,349	40,619,909	-13.49	3.38
Over 250,000 Population	17	41,882,480	35,919,021	37,091,966	-14.23	3.27
50,000 - 249,999 Population	9	3,228,337	3,073,935	3,184,921	-4.77	3.61
Under 50,000 Population	9	313,517	297,393	343,022	-5.13	15.34
Local Corrections	20*	15,732,004	17,234,317	20,190,319	9.55	17.15
Over 250,000 Population	8	11,884,583	12,776,172	14,913,609	7.50	16.73
50,000 - 249,999 Population	6	3,323,928	3,883,996	4,616,125	16.85	18.85
Under 50,000 Population	6	523,493	574,149	660,585	9.68	15.05

*Agencies responding to the local corrections questionnaires were all Sheriffs' Departments who also responded to the law enforcement questionnaire. The total number of agencies reporting, therefore, reflects a "double count" of Sheriffs' Departments.

QUESTION ASKED:

Please provide the number of your agency's total authorized personnel for fiscal years 1977-78, 1978-79 and 1979-80.

TABLE 6 A. PERSONNEL - TOTAL
FYS 1977-78 and 1978-79
ALL DATA
QUESTION 04A

Agency Type and Population	No. of Agencies Reporting	FY 1977-1978	FY 1978-1979	PERCENT CHANGE FY 1977-78 to FY 1978-79
TOTAL	344*	71,429.1	71,195.4	-.32
Police - Law Enforcement	197	32,269.6	32,570.9	.93
Over 250,000 Population	6	17,194.8	17,438.5	1.42
50,000 - 249,999 Population	51	9,770.0	9,853.3	.85
Under 50,000 Population	140	5,304.8	5,279.1	-.47
Sheriffs - Law Enforcement	33	17,730.9	17,704.0	-.14
Over 250,000 Population	7	12,488.4	12,426.5	-.49
50,000 - 249,999 Population	13	4,458.5	4,468.5	.22
Under 50,000 Population	13	784.0	809.0	3.18
District Attorneys	27	4,439.8	4,651.3	4.76
Over 250,000 Population	15	4,149.3	4,355.8	4.98
50,000 - 249,999 Population	8	251.5	255.5	1.59
Under 50,000 Population	4	39.0	40.0	2.56
Public Defenders	24	1,586.7	1,585.6	-.05
Over 250,000 Population	15	1,514.7	1,514.8	.01
50,000 - 249,999 Population	5	65.0	64.3	-1.07
Under 50,000 Population	4	7.0	6.5	-7.42
Probation Departments	38	12,978.9	12,151.6	-6.36
Over 250,000 Population	17	12,013.1	11,221.8	-6.58
50,000 - 249,999 Population	11	814.3	803.3	-1.34
Under 50,000 Population	10	151.5	126.5	-16.49
Local Corrections	25*	2,423.2	2,532.0	4.49
Over 250,000 Population	9	1,963.0	2,065.0	5.19
50,000 - 249,999 Population	7	342.0	351.0	2.62
Under 50,000 Population	9	118.2	116.0	-1.82

*Agencies responding to the local corrections questionnaires were all Sheriffs' Departments who also responded to the law enforcement questionnaire. The total number of agencies reporting, therefore, reflects a "double count" of Sheriffs' Departments.

QUESTION ASKED:

Please provide the number of your agency's total authorized personnel for fiscal years 1977-78, 1978-79 and 1979-80.

TABLE 6 AX, PERSONNEL - TOTAL
FYS 1977-78, 1978-79 and 1979-80
AGENCIES NOT REPORTING 1979-80 ESTIMATES EXCLUDED
QUESTION 04A

Agency Type and Population	No. of Agencies Reporting	FY			PERCENT CHANGE	
		1977-1978	1978-1979	1979-1980	FY 1977-78 To FY 1978-79	FY 1978-79 To FY 1979-80
TOTAL	322*	57,428.2	57,465.9	56,390.9	.07	-1.86
Police - Law Enforcement	183	29,245.4	29,486.7	28,227.8	.83	-4.26
Over 250,000 Population	4	15,175.8	15,356.5	13,886.6	1.19	-9.56
50,000 - 249,999 Population	47	9,031.8	9,115.1	9,162.0	.92	.52
Under 50,000 Population	132	5,037.8	5,015.1	5,179.2	-.46	3.29
Sheriffs - Law Enforcement	30	8,562.5	8,863.5	8,977.5	3.51	1.29
Over 250,000 Population	6	4,434.0	4,706.0	4,756.0	6.13	1.06
50,000 - 249,999 Population	11	3,344.5	3,348.5	3,388.5	.12	1.20
Under 50,000 Population	13	784.0	809.0	833.0	3.18	2.97
District Attorneys	25	3,303.3	3,463.3	3,550.6	4.84	2.52
Over 250,000 Population	14	3,073.3	3,231.3	3,291.6	5.14	1.86
50,000 - 249,999 Population	7	191.0	192.0	215.0	.51	11.96
Under 50,000 Population	4	39.0	40.0	44.0	2.56	10.00
Public Defenders	23	1,017.9	1,037.8	1,078.8	1.94	3.95
Over 250,000 Population	14	945.9	967.0	1,000.0	2.24	3.42
50,000 - 249,999 Population	5	65.0	64.3	70.3	-1.07	9.33
Under 50,000 Population	4	7.0	6.5	8.5	-7.42	30.86
Probation Departments	36	12,875.9	12,082.6	11,877.2	-6.15	-1.69
Over 250,000 Population	17	12,013.1	11,221.8	10,989.4	-6.58	-2.06
50,000 - 249,999 Population	10	775.3	771.3	794.3	-.51	2.98
Under 50,000 Population	9	87.5	89.5	93.5	2.26	4.53
Local Corrections	25*	2,423.2	2,532.0	2,679.0	4.49	5.81
Over 250,000 Population	9	1,963.0	2,065.0	2,176.0	5.19	5.38
50,000 - 249,999 Population	7	342.0	351.0	382.0	2.62	8.84
Under 50,000 Population	9	118.2	116.0	121.0	-1.82	4.27

*Agencies responding to the local corrections questionnaires were all Sheriffs' Departments who also responded to the law enforcement questionnaire. The total number of agencies reporting, therefore, reflects a "double count" of Sheriffs' Departments.

QUESTION ASKED:

Please provide the number of your agency's sworn positions, attorneys, probation officer positions or sworn correctional positions for fiscal years 1977-78, 1978-79 and 1979-80.

TABLE 6 B, PERSONNEL - PROFESSIONAL
FYS 1977-78 and 1978-79
ALL DATA
QUESTION 04B

Agency Type and Population	No. of Agencies Reporting	FY 1977-1978	FY 1978-1979	PERCENT CHANGE FY 1977-1978 to FY 1978-79
TOTAL		46,719.4	46,060.1	-1.40
Police - Law Enforcement	197	22,913.0	22,938.5	.09
Over 250,000 Population	6	12,303.0	12,290.0	-.10
50,000 - 249,999 Population	51	6,780.0	6,801.0	.38
Under 50,000 Population	140	3,830.0	3,847.5	.36
Sheriffs - Law Enforcement	33	11,768.4	11,559.5	-1.76
Over 250,000 Population	7	8,537.4	8,334.5	-2.37
50,000 - 249,999 Population	13	2,649.0	2,639.0	-.35
Under 50,000 Population	13	582.0	586.0	.67
District Attorneys	27	2,118.6	2,192.1	3.50
Over 250,000 Population	15	1,988.7	2,058.2	3.50
50,000 - 249,999 Population	8	111.5	115.5	2.86
Under 50,000 Population	4	18.4	18.4	.00
Public Defenders	24	1,168.3	1,144.9	-2.20
Over 250,000 Population	15	1,124.3	1,098.1	-2.31
50,000 - 249,999 Population	5	40.0	43.3	7.50
Under 50,000 Population	4	4.0	3.5	-9.99
Probation Departments	38	7,234.1	6,667.1	-7.87
Over 250,000 Population	17	6,634.1	6,090.1	-8.19
50,000 - 249,999 Population	11	514.5	500.5	-2.77
Under 50,000 Population	10	85.5	76.5	-10.58
Local Corrections	25*	1,517.0	1,568.0	3.29
Over 250,000 Population	9	1,221.0	1,286.0	5.31
50,000 - 249,999 Population	7	214.0	199.0	-7.18
Under 50,000 Population	9	82.0	83.0	1.10

*Agencies responding to the local corrections questionnaires were all Sheriffs' Departments who also responded to the law enforcement questionnaire. The total number of agencies reporting, therefore, reflects a "double count" of Sheriffs' Departments.

QUESTION ASKED:

Please provide the number of your agency's sworn positions, attorneys, probation officer positions or sworn correctional positions for fiscal years 1977-78, 1978-79 and 1979-80.

TABLE 6 BX PERSONNEL - PROFESSIONAL
FYS 1977-78, 1978-79 and 1979-80
AGENCIES NOT REPORTING 1979-80 ESTIMATES EXCLUDED
QUESTION 04B

Agency Type and Population	No. of Agencies Reporting				PERCENT CHANGE	
		FY 1977-78	FY 1978-79	FY 1979-1980	FY 1977-78 to FY 1978-79	FY 1978-79 to FY 1979-80
TOTAL	322*	36,982.2	36,675.3	36,354.6	-.78	-.88
Police - Law Enforcement	183	20,745.0	20,799.5	20,403.4	.26	-1.92
Over 250,000 Population	4	10,826.0	10,843.0	10,228.9	.16	-5.65
50,000 - 249,999 Population	47	6,269.0	6,292.0	6,385.5	.37	1.49
Under 50,000 Population	132	3,650.0	3,664.5	3,789.0	.36	3.24
Sheriffs - Law Enforcement	30	5,336.0	5,444.0	5,503.0	1.99	1.08
Over 250,000 Population	6	2,842.0	2,956.0	2,972.0	4.01	.54
50,000 - 249,999 Population	11	1,912.0	1,902.0	1,916.0	-.51	.74
Under 50,000 Population	13	582.0	586.0	615.0	.67	4.88
District Attorneys	25	1,474.6	1,504.6	1,527.4	2.08	1.36
Over 250,000 Population	14	1,344.7	1,370.7	1,382.0	2.01	.79
50,000 - 249,999 Population	7	111.5	115.5	126.0	2.86	9.72
Under 50,000 Population	4	18.4	18.4	19.4	.00	4.35
Public Defenders	23	723.5	728.1	772.8	1.14	5.62
Over 250,000 Population	14	679.5	681.3	723.0	.00	6.35
50,000 - 249,999 Population	5	40.0	43.3	44.3	7.50	2.33
Under 50,000 Population	4	4.0	3.5	5.5	-9.99	55.56
Probation Departments	36	7,186.1	6,631.1	6,510.0	-7.71	-1.84
Over 250,000 Population	17	6,634.1	6,090.1	5,976.5	-8.19	-1.83
50,000 - 249,999 Population	10	489.5	479.5	471.0	-2.03	-1.66
Under 50,000 Population	9	62.5	61.5	62.5	-1.44	1.47
Local Corrections	25*	1,517.0	1,568.0	1,638.0	3.29	4.47
Over 250,000 Population	9	1,221.0	1,286.0	1,344.0	5.31	4.48
50,000 - 249,999 Population	7	214.0	199.0	205.0	-7.18	3.17
Under 50,000 Population	9	82.0	83.0	89.0	1.10	7.61

*Agencies responding to the local corrections questionnaires were all Sheriffs' Departments who also responded to the law enforcement questionnaire. The total number of agencies reporting, therefore, reflects a "double count" of Sheriffs' Departments.

QUESTION ASKED:

Please provide the number of your agency's "other" personnel positions and non-sworn positions (excluding CETA) for fiscal years 1977-78, 1978-79 and 1979-80.

TABLE 6 C, PERSONNEL - NON-PROFESSIONAL, EXCLUDING CETA
FYS 1977-78 and 1978-79
ALL DATA
QUESTION 04C

<u>Agency Type and Population</u>	<u>No. of Agencies Reporting</u>	<u>FY 1977-1978</u>	<u>FY 1978-1979</u>	<u>PERCENT CHANGE FY 1977-78 to FY 1978-79</u>
TOTAL	344*	20,966.5	20,906.7	-.36
Police - Law Enforcement	197	7,968.1	7,990.4	.24
Over 250,000 Population	6	4,396.8	4,480.6	1.91
50,000 - 249,999 Population	51	2,391.0	2,365.3	-1.06
Under 50,000 Population	140	1,180.3	1,144.5	-2.32
Sheriffs - Law Enforcement	33	4,259.5	4,369.5	2.62
Over 250,000 Population	7	2,964.0	3,083.0	4.01
50,000 - 249,999 Population	13	1,145.5	1,124.5	-1.87
Under 50,000 Population	13	150.0	162.0	8.70
District Attorneys	27	2,146.2	2,244.2	4.78
Over 250,000 Population	15	1,995.6	2,096.6	5.14
50,000 - 249,999 Population	8	131.0	128.0	-2.73
Under 50,000 Population	4	19.6	19.6	.00
Public Defenders	24	373.4	349.6	-6.92
Over 250,000 Population	15	348.4	327.6	-6.42
50,000 - 249,999 Population	8	22.0	20.0	-8.32
Under 50,000 Population	4	2.0	2.0	.00
Probation Departments	38	5,411.3	5,078.0	-6.13
Over 250,000 Population	17	5,132.0	4,803.7	-6.39
50,000 - 249,999 Population	11	234.8	233.8	-.42
Under 50,000 Population	10	44.5	40.5	-9.08
Local Corrections	25*	808.0	875.0	8.31
Over 250,000 Population	9	711.0	750.0	5.44
50,000 - 249,999 Population	7	72.0	98.0	35.92
Under 50,000 Population	9	25.0	27.0	9.68

*Agencies responding to the local corrections questionnaires were all Sheriffs' Departments who also responded to the law enforcement questionnaire. The total number of agencies reporting, therefore, reflects a "double count" of Sheriffs' Departments.

QUESTION ASKED:

Please provide the number of your agency's "other" personnel positions and non-sworn positions (excluding CETA) for fiscal years 1977-78, 1978-79 and 1979-80.

TABLE 6 CX, PERSONNEL - NON-PROFESSIONAL, EXCLUDING CETA
FYS 1977-78, 1978-79 and 1979-80
AGENCIES NOT REPORTING 1979-80 ESTIMATES EXCLUDED
QUESTION 04C

Agency Type and Population	No. of Agencies Reporting	FY 1977-1978	FY 1978-1979	FY 1979-1980	PERCENT CHANGE	
					FY 1977-78 To FY 1978-79	FY 1978-79 To FY 1979-80
TOTAL	322*	17,402.3	17,342.5	16,922.0	-.20	-2.53
Police - Law Enforcement	183	7,286.9	7,314.2	6,952.1	.50	-4.97
Over 250,000 Population	4	3,948.8	4,028.6	3,378.8	2.02	-16.12
50,000 - 249,999 Population	47	2,223.8	2,202.1	2,397.0	-.84	8.74
Under 50,000 Population	132	1,114.3	1,083.5	1,176.3	-2.34	8.43
Sheriffs - Law Enforcement	30	1,995.5	2,103.5	1,918.5	5.33	-8.78
Over 250,000 Population	6	970.0	1,106.0	1,170.0	14.02	5.79
50,000 - 249,999 Population	11	875.5	835.5	580.5	-4.56	-30.53
Under 50,000 Population	13	150.0	162.0	168.0	8.70	3.20
District Attorneys	25	1,687.2	1,776.2	1,843.2	5.34	3.72
Over 250,000 Population	14	1,564.6	1,659.6	1,712.6	6.04	3.16
50,000 - 249,999 Population	7	103.0	97.0	109.0	-6.55	12.28
Under 50,000 Population	4	19.6	19.6	21.6	.00	12.50
Public Defenders	23	249.4	227.6	250.0	-8.69	9.52
Over 250,000 Population	14	225.4	205.6	226.0	-8.50	9.30
50,000 - 249,999 Population	5	22.0	20.0	22.0	-8.32	9.09
Under 50,000 Population	4	2.0	2.0	2.0	.00	.00
Probation Departments	36	5,375.3	5,046.0	5,019.2	-6.13	-.51
Over 250,000 Population	17	5,132.0	4,803.7	4,752.9	-6.39	-1.02
50,000 - 249,999 Population	10	224.8	223.8	242.3	-.39	8.03
Under 50,000 Population	9	18.5	18.5	24.0	.00	28.57
Local Corrections	25*	808.0	875.0	939.0	8.31	7.12
Over 250,000 Population	9	711.0	750.0	798.0	5.44	6.48
50,000 - 249,999 Population	7	72.0	98.0	118.0	35.92	20.71
Under 50,000 Population	9	25.0	27.0	23.0	9.68	-14.70

*Agencies responding to the local corrections questionnaires were all Sheriffs' Departments who also responded to the law enforcement questionnaire. The total number of agencies reporting, therefore, reflects a "double count" of Sheriffs' Departments.

QUESTION ASKED:

Please provide the number of your agency's CETA positions for fiscal years 1977-78, 1978-79 and 1979-80.

TABLE 6 D PERSONNEL - CETA ONLY
FYS 1977-78 and 1978-79
ALL DATA
QUESTION 04D

Agency Type and Population	No. of Agencies Reporting	FY	FY	PERCENT CHANGE
		1977-1978	1978-1979	FY 1977-78 to 1978-79
TOTAL	281*	2,777.7	3,060.1	10.10
Police - Law Enforcement	164	1,448.5	1,645.1	13.64
Over 250,000 Population	6	584.0	686.0	17.47
50,000 - 249,999 Population	47	582.0	679.0	16.13
Under 50,000 Population	111	282.5	280.1	.00
Sheriffs - Law Enforcement	26	694.0	664.0	-4.48
Over 250,000 Population	6	534.0	518.0	-3.02
50,000 - 249,999 Population	11	116.0	100.0	-13.32
Under 50,000 Population	9	44.0	46.0	4.08
District Attorneys	23	175.0	214.0	22.37
Over 250,000 Population	14	164.0	201.0	23.08
50,000 - 249,999 Population	8	10.0	12.0	25.00
Under 50,000 Population	1	1.0	1.0	.00
Public Defenders	15	45.0	47.0	3.33
Over 250,000 Population	12	43.0	46.0	5.56
50,000 - 249,999 Population	2	2.0	1.0	-49.99
Under 50,000 Population	1	.0	.0	.00
Probation Departments	35	330.0	402.0	22.34
Over 250,000 Population	14	247.0	326.0	32.39
50,000 - 249,999 Population	11	65.0	69.0	6.78
Under 50,000 Population	10	18.0	7.0	-61.10
Local Corrections -	18*	85.2	88.0	4.26
Over 250,000 Population	7	23.0	28.0	21.21
50,000 - 249,999 Population	5	56.0	54.0	-3.56
Under 50,000 Population	6	6.2	6.0	.00

*Agencies responding to the local corrections questionnaires were all Sheriffs' Departments who also responded to the law enforcement questionnaire. The total number of agencies reporting, therefore, reflect a "double count" of Sheriffs' Departments.

QUESTION ASKED:

Please provide the number of your agency's CETA positions for fiscal years 1977-78, 1978-79 and 1979-80.

TABLE 6 DX, PERSONNEL - CETA ONLY
FYS 1977-78, 1978-79 and 1979-80
AGENCIES NOT REPORTING 1979-80 ESTIMATES EXCLUDED
QUESTION 04D

Agency Type and Population	No. of Agencies Reporting	FY 1977-1978	FY 1978-1979	FY 1979-80	PERCENT CHANGE	
					FY 1977-78 To FY 1978-79	FY 1978-79 to FY 1979-80
TOTAL	257*	2,137.7	2,278.1	1,764.9	7.23	-22.46
Police - Law Enforcement	145	1,202.5	1,239.1	850.9	2.41	-30.58
Over 250,000 Population	3	431.0	444.0	279.0	2.99	-37.15
50,000 - 249,999 Population	39	506.0	531.0	359.0	4.62	-32.34
Under 50,000 Population	103	265.5	264.1	212.9	.00	-19.22
Sheriffs - Law Enforcement	24	319.0	289.0	248.0	-9.76	-14.16
Over 250,000 Population	5	169.0	153.0	131.0	-9.46	-14.37
50,000 - 249,999 Population	10	106.0	90.0	84.0	-15.08	-6.66
Under 50,000 Population	9	44.0	46.0	33.0	4.08	-27.44
District Attorneys	22	175.0	214.0	212.0	21.25	-1.02
Over 250,000 Population	13	164.0	201.0	197.0	23.02	-1.93
50,000 - 249,999 Population	8	10.0	12.0	13.0	25.00	6.67
Under 50,000 Population	1	1.0	1.0	2.0	.00	100.00
Public Defenders	15	45.0	47.0	24.0	3.33	-48.38
Over 250,000 Population	12	43.0	46.0	23.0	5.56	-49.99
50,000 - 249,999 Population	2	2.0	1.0	1.0	-49.99	.00
Under 50,000 Population	1	.0	.0	.0	.00	.00
Probation Departments	33	311.0	401.0	335.0	29.79	-16.38
Over 250,000 Population	14	247.0	326.0	247.0	32.39	-24.45
50,000 - 249,999 Population	10	61.0	68.0	81.0	11.48	19.12
Under 50,000 Population	9	3.0	7.0	7.0	166.67	.00
Local Corrections	18*	85.2	88.0	95.0	4.26	8.16
Over 250,000 Population	7	23.0	28.0	33.0	21.21	17.50
50,000 - 249,999 Population	5	56.0	54.0	59.0	-3.56	9.26
Under 50,000 Population	6	6.2	6.0	3.0	.00	-49.99

*Agencies responding to the local corrections questionnaires were all Sheriffs' Departments who also responded to the law enforcement questionnaire. The total number of agencies reporting, therefore, reflects a "double count" of Sheriffs' Departments.

QUESTION ASKED:

In terms of the commitment of resources, please check the status of the following programs or activities under your 1978-79 budget compared to the 1977-78 budget.

TABLE 7 A, PROGRAM STATUS
FYS 1977-78, 1978-79

Agency Type and Population	Number of Responses	Program Unchanged	Program Expanded	Program Reduced	Program Eliminated	New Program	Other
TOTAL	3,419	2,236	480	531	88	82	2
Police - Law Enforcement	1,915	1,259	284	282	44	46	0
Over 250,000 Population	56	23	12	21	0	0	0
50,000 - 249,999 Population	548	363	86	71	16	12	0
Under 50,000 Population	1,311	873	186	190	28	34	0
Sheriffs - Law Enforcement	367	245	59	49	7	7	0
Over 250,000 Population	83	48	20	13	1	1	0
50,000 - 249,999 Population	140	89	13	32	4	2	0
Under 50,000 Population	144	108	26	4	2	4	0
District Attorneys	277	188	36	44	6	3	0
Over 250,000 Population	198	139	26	27	3	3	0
50,000 - 249,999 Population	65	38	8	16	3	0	0
Under 50,000 Population	14	11	2	1	0	0	0
Public Defenders	201	133	27	26	6	8	1
Over 250,000 Population	139	85	18	24	5	7	0
50,000 - 249,999 Population	44	30	9	2	1	1	1
Under 50,000 Population	18	18	0	0	0	0	0
Probation Departments	495	286	48	127	22	11	1
Over 250,000 Population	218	92	27	86	10	2	1
50,000 - 249,999 Population	141	100	8	22	8	3	0
Under 50,000 Population	136	94	13	19	4	6	0
Local Corrections	164	125	26	3	3	7	0
Over 250,000 Population	63	44	12	1	2	4	0
50,000 - 249,999 Population	54	46	6	1	1	0	0
Under 50,000 Population	47	35	8	1	0	3	0

QUESTION ASKED:

In terms of the commitment of resources, please check the status of the following programs or activities under your 1978-79 budget compared to the 1977-78 budget.

**TABLE 7 AP, PROGRAM STATUS
FYS 1977-78, 1978-79**

Agency Type and Population	Total	PERCENTAGE					
		Program Unchanged	Program Expanded	Program Reduced	Program Eliminated	New Program	Other
TOTAL	100.00	65.35	14.02	15.51	2.57	2.39	.04
Police - Law Enforcement	100.00	65.74	14.83	14.72	2.29	2.40	.00
Over 250,000 Population	100.00	41.07	21.42	37.50	.00	.00	.00
50,000 - 249,999 Population	100.00	66.24	15.69	12.95	2.91	2.18	.00
Under 50,000 Population	100.00	66.59	14.18	14.49	2.13	2.59	.00
Sheriffs - Law Enforcement	100.00	66.75	16.17	13.35	1.90	1.90	.00
Over 250,000 Population	100.00	57.83	24.09	15.66	1.20	1.20	.00
50,000 - 249,999 Population	100.00	63.57	9.28	22.85	2.85	1.42	.00
Under 50,000 Population	100.00	75.00	18.05	2.77	1.38	2.77	.00
District Attorneys	100.00	67.87	12.99	15.88	2.16	1.08	.00
Over 250,000 Population	100.00	70.20	13.13	13.63	1.51	1.51	.00
50,000 - 249,999 Population	100.00	58.46	12.30	24.61	4.61	.00	.00
Under 50,000 Population	100.00	78.57	14.28	7.14	.00	.00	.00
Public Defenders	100.00	66.16	13.43	12.93	2.98	3.98	.49
Over 250,000 Population	100.00	61.15	12.94	17.26	3.59	5.03	.00
50,000 - 249,999 Population	100.00	68.18	20.45	4.54	2.27	2.27	2.27
Under 50,000 Population	100.00	100.00	.00	.00	.00	.00	.00
Probation Departments	100.00	57.53	9.65	25.54	4.42	2.21	.20
Over 250,000 Population	100.00	41.81	12.26	39.08	4.54	.90	.45
50,000 - 249,999 Population	100.00	70.92	5.67	15.60	5.67	2.12	.00
Under 50,000 Population	100.00	69.11	9.55	13.97	2.94	4.41	.00
Local Corrections	100.00	76.21	15.85	1.82	1.82	4.26	.00
Over 250,000 Population	100.00	69.84	19.04	1.58	3.17	6.34	.00
50,000 - 249,999 Population	100.00	85.18	11.11	1.85	1.85	.00	.00
Under 50,000 Population	100.00	74.46	17.02	2.12	.00	6.38	.00

QUESTION ASKED:

In terms of the commitment of resources, please check the reason for change in the following programs or activities under your 1978-79 budget compared to the 1977-78 budget.

TABLE 7 B, REASON FOR CHANGE IN PROGRAM STATUS
FYS 1977-78 and 1978-79

Agency Type and Population	Number of Responses	Funds	Personnel	Equipment	Funds and Personnel	Personnel and Equipment	Funds and Equipment	Funds, Personnel and Equipment	Other
TOTAL	1,045	350	351	13	231	8	18	43	31
Police - Law Enforcement	615	163	251	8	133	8	16	30	6
Over 250,000 Population	29	7	9	0	10	0	1	2	0
50,000 - 249,999 Population	160	44	65	3	28	0	12	5	3
Under 50,000 Population	426	112	177	5	95	8	3	23	3
Sheriffs - Law Enforcement	106	35	39	1	17	0	2	8	4
Over 250,000 Population	34	9	7	0	8	0	2	6	2
50,000 - 249,999 Population	46	20	22	0	4	0	0	0	0
Under 50,000 Population	26	6	10	1	5	0	0	2	2
District Attorneys	67	23	26	0	15	0	0	0	3
Over 250,000 Population	47	19	14	0	11	0	0	0	3
50,000 - 249,999 Population	18	4	10	0	4	0	0	0	0
Under 50,000 Population	2	0	2	0	0	0	0	0	0
Public Defenders	46	12	12	0	19	0	0	1	2
Over 250,000 Population	41	10	9	0	19	0	0	1	2
50,000 - 249,999 Population	5	2	3	0	0	0	0	0	0
Probation Departments	184	101	20	0	46	0	0	3	14
Over 250,000 Population	107	55	7	0	40	0	0	3	2
50,000 - 249,999 Population	36	23	7	0	4	0	0	0	2
Under 50,000 Population	41	23	6	0	2	0	0	0	10
Local Corrections	27	16	3	4	1	0	0	1	2
Over 250,000 Population	15	11	0	1	1	0	0	1	1
50,000 - 249,999 Population	6	4	2	0	0	0	0	0	0
Under 50,000 Population	6	1	1	3	0	0	0	0	1

QUESTION ASKED:

In terms of the commitment of resources, please check the reason for change in the following programs or activities under your 1978-79 budget compared to the 1977-78 budget.

TABLE 7 BP, REASON FOR CHANGE IN PROGRAM STATUS
FYS 1977-78 and 1978-79

Agency Type and Population	TOTAL	PERCENTAGE							
		Funds	Personnel	Equipment	Funds and Personnel	Personnel and Equipment	Funds and Equipment	Funds, Personnel and Equipment	Other
TOTAL	100.00	33.49	33.58	1.24	22.09	.76	1.72	4.11	2.95
Police - Law Enforcement	100.00	26.50	40.81	1.30	21.62	1.30	2.60	4.87	.97
Over 250,000 Population	100.00	24.13	31.03	.00	34.48	.00	3.44	6.89	.00
50,000 - 249,999 Population	100.00	27.50	40.62	1.87	17.50	.00	7.50	3.12	1.87
Under 50,000 Population	100.00	26.29	41.54	1.17	22.30	1.87	.70	5.39	.70
Sheriffs - Law Enforcement	100.00	33.01	36.79	.94	16.03	.00	1.88	7.54	3.77
Over 250,000 Population	100.00	26.47	20.58	.00	23.52	.00	5.88	17.64	5.88
50,000 - 249,999 Population	100.00	43.47	47.82	.00	8.69	.00	.00	.00	.00
Under 50,000 Population	100.00	23.07	38.46	3.84	19.23	.00	.00	7.69	7.69
District Attorneys	100.00	34.32	38.80	.00	22.38	.00	.00	.00	4.47
Over 250,000 Population	100.00	40.42	29.78	.00	23.40	.00	.00	.00	6.38
50,000 - 249,999 Population	100.00	22.22	55.55	.00	22.22	.00	.00	.00	.00
Under 50,000 Population	100.00	.00	100.00	.00	.00	.00	.00	.00	.00
Public Defenders	100.00	26.08	26.08	.00	41.30	.00	.00	2.17	4.34
Over 250,000 Population	100.00	24.39	21.95	.00	46.34	.00	.00	2.43	4.87
50,000 - 249,999 Population	100.00	40.00	60.00	.00	.00	.00	.00	.00	.00
Under 50,000 Population	100.00								
Probation Departments	100.00	54.89	10.86	.00	24.99	.00	.00	1.63	7.60
Over 250,000 Population	100.00	51.40	6.54	.00	37.37	.00	.00	2.80	1.86
50,000 - 249,999 Population	100.00	63.88	19.44	.00	11.11	.00	.00	.00	5.55
Under 50,000 Population	100.00	56.09	14.63	.00	4.87	.00	.00	.00	24.39
Local Corrections	100.00	59.25	11.11	14.81	3.70	.00	.00	3.70	7.40
Over 250,000 Population	100.00	73.33	.00	6.66	6.66	.00	.00	6.66	6.66
50,000 - 249,999 Population	100.00	66.66	33.33	.00	.00	.00	.00	.00	.00
Under 50,000 Population	100.00	16.66	16.66	50.00	.00	.00	.00	.00	16.66

METHODOLOGY

In preparation for the current study, eight questionnaires were developed during July-October 1978 by the Office of Criminal Justice Planning (OCJP) with the advice and assistance of the Proposition 13 Advisory Committee. The Peace Officers Research Association of California was particularly helpful. The Association's experience in collecting salary and benefit information was useful when the questionnaire was being developed. These eight questionnaires, which were to be eventually distributed to the various justice agencies throughout the State of California, were sent to the RAND Corporation in Santa Monica for review and critique. In November 1978, RAND provided an extensive evaluation of the proposed instruments. In consonance with RAND's recommendations, the questionnaires were modified by OCJP and a special consultant, and particular sections of the questionnaires were reformatted, added, expanded, eliminated or merged with other sections.

The Pilot Study

Copies of a letter of introduction, a pilot study letter, and a critique questionnaire were developed for use in the validation pilot study. The critique instrument requested survey participants to provide feedback concerning the major questionnaire in relation to format, clarity, directions, validity, additions and deletions or other changes to the instrument.

For purposes of the validation pilot study, a random sample of 18 agencies was drawn after stratification according to agency type and size of jurisdiction population. Prior to distributing the pilot study questionnaires,

the head of each agency was contacted by telephone by the OCJP and advised of the importance of their participation. On March 1, 1979, agency heads and their respective County Administrative Officers or City Managers were sent copies of the questionnaire along with a letter of introduction that explained the pilot study, a pilot study critique questionnaire, and a self-addressed stamped return envelope. After two weeks, follow-up telephone calls were initiated by OCJP to those agencies which had not responded.

Three counties and six cities, one a contract city, were asked to participate in the pilot study. The counties were El Dorado, Los Angeles and Sacramento. Cities receiving questionnaires were Los Angeles, Sacramento, San Mateo, Sausalito, and Artesia, which contracts with the Los Angeles County Sheriff's Department for law enforcement services. In each county, questionnaires were sent to the Sheriff, District Attorney, Public Defender and Chief Probation Officer. Both the law enforcement questionnaire and the local corrections questionnaire were sent to the Sheriffs and Chiefs of Police.

After each questionnaire had been returned and reviewed, OCJP conducted a telephone interview with each person who had completed the questionnaire regarding any problem areas mentioned on the critique questionnaire. Pilot study County Administrative Officers and City Managers were also interviewed by telephone during this period of time. By March 30, 1979, 15 pilot study agencies had returned their questionnaires.

All pilot study participants were favorable toward the format and instructions on the questionnaire, and a few respondents recommended minor content changes.

After summarizing the pilot study critique questionnaires and reviewing the results of the follow-up telephone interviews, appropriate minor alterations were made, and final versions of the survey questionnaires were developed. Telephone interviews revealed that questionnaires were not required by County Administrative Officers and City Managers, and it was decided to send a letter of explanation only to these persons during the major study with a statement that copies of the questionnaires were available upon request. It was also pointed out that only one response would be accepted from each jurisdiction, thus emphasizing the need to resolve any disagreements on the data at the local level.

During the initial planning phases in July-October 1978, Advisory Committee members had agreed to solicit the survey participation of agencies through the associations and organizations represented by the committee. In March 1979, OCJP contacted Advisory Committee members personally by telephone and committee members correspondingly contacted agencies within their respective association members.

On March 15-16, 1979, letters were sent to all agency heads, County Administrative Officers and City Managers. These preliminary letters notified the recipients of the forthcoming survey, explained the background and purpose of the study, and stressed the importance of their cooperation and participation.

On April 3-4, 1979, questionnaires were distributed to heads of all agencies along with a letter of explanation and a self-addressed, stamped return envelope. The letter included the names and telephone numbers of

OCJP staff members to be contacted regarding questions or problems. Questionnaires were sent to the following groups of agencies: municipal police including contract cities, sheriffs, district attorneys, public defenders, probation departments, local corrections and city prosecutors.

Concurrently, letters only were distributed to County Administrative Officers and City Managers. In total, 988 questionnaires were sent to 574 agencies, with some agencies receiving more than one questionnaire as was the case, for example, with law enforcement agencies being sent a local corrections questionnaire.

As the questionnaires were returned, each was carefully reviewed and edited for key-punching, and OCJP made telephone calls to agencies whose returned questionnaires were incomplete or in error. During the third and fourth weeks of the survey, OCJP initiated a follow-up telephone contact survey with non-responding agencies with particular attention given to agencies serving large to middle-sized population jurisdictions. A follow-up letter was also sent to non-responding agencies during this time. On April 27, 1979, letters were sent to Advisory Committee members with a list of agencies that had not yet returned their questionnaires, and committee members were requested to contact these non-responsive organizations. Selected Advisory Committee members were also contacted by telephone.

Data from completed questionnaires were key-punched for processing by a computer. A record card was maintained for each agency to include the date the questionnaire was mailed, received back by OCJP, reviewed and key-punched. After June 25, 1979, any questionnaires received were not

processed for inclusion in the analyses for the current preliminary report.

In computing averages contained in this report, it should be noted that the number of agencies used varied from item to item since all questionnaire items did not pertain to all agencies and were left blank on the questionnaire. During editing, differences between zero amounts and blanks were carefully screened, and if the data was not clear, a telephone call was made to the agency. Such was the case, for example, with contract cities who could only provide total budget data or for many local corrections agencies whose budget and manpower allocation were imbedded within their respective major agency's reported figures. In addition, many agencies could not provide projected 1979-80 budget and manpower data, and this was considered in computing averages.

It should be noted that contract cities were not reported as a separate category in the analysis, but were included within those agencies providing them with law enforcement services. The reason for handling contract cities in this method was that most sheriffs' departments were unable to separate their contract city budgets and personnel from the overall data in those two areas and the contract city managers were not able to give the detailed budget and personnel data the questionnaire requested. City correctional data were also not included in the analysis because only three or four small agencies reported having correctional facilities. Most cities reported having short-term lock-ups (less than 48 hours), or none at all, and transferring prisoners to county facilities as soon as possible.

APPENDICES

APPENDIX A

The following question was asked of each agency type: "In terms of the commitment of resources, please check (✓) the status of the following programs or activities under the 1978-79 budget compared to the 1977-78 budget." The types of programs/activities listed for each agency type were:

Law Enforcement Agencies (Question 17) Program/Activity	District Attorneys (Question 27) Program/Activity	Public Defenders (Question 23) Program/Activity	Probation Departments (Question 20) Program/Activity	Local Corrections (Question 19) Program/Activity
In-Service Training	Mental Health	Mental Health	Juvenile Investigations and Court Services	City/County Jail
Community Relations (including crime prevention)	Juvenile	Juvenile	Juvenile Field Supervision	City/County Camps/Farms
Vice Control	Misdemeanors	Misdemeanors	Juvenile Intake Services	Resident Education Programs
Intelligence	Felonies	Felonies	Juvenile Hall	Resident Recreation Programs
Planning and Research	Appellate	Appellate	Juvenile Camps, Ranches, Homes and Schools	Resident Religious Programs
Narcotics Control	Consumer Fraud	Alternative Sentencing Program	Juvenile Resident Education Program	Work Release/Furlough Programs
Patrol	Major Fraud	Initial Interviews of Clients	Juvenile Resident Recreation Program	Private Agency Contracts
Traffic Control	Child Support	Investigations	Private Agency Contracts	In-Service Training
Investigation (including juvenile)	Search Warrant Duty	Branch Offices	Adult Investigations and Court Services	
Custody	Complaint Review	In-Service Training	Adult Field Supervision	
Reserve Training	Grand Jury Case Presentation		Diversion Programs	
Crime Laboratory	Career Criminal Prosecution		Aid to Victims Programs	
Civil Process	In-Service Training		Counseling Services	
	Law Enforcement Coordination and Training		Youth Services Bureau	
	Organized Crime		In-Service Training	
	Victim/Witness Programs		Volunteer Training (crisis resolution, runaway and other programs under 3121)	
			Planning and Research	

APPENDIX B

AGENCIES WHICH RETURNED COMPLETED QUESTIONNAIRES TO OCJP

(A number of agencies, particularly contract cities, returned blank questionnaires indicating that they did not have the requested information.)

ALAMEDA COUNTY

District Attorney's Office
Probation Department
Public Defender's Office
Sheriff's Department - Corrections
Sheriff's Department - Law Enforcement
Berkeley Police Department
Hayward Police Department
Livermore Police Department
Newark Police Department
Oakland Police Department
Pleasanton Police Department
San Leandro Police Department

ALPINE COUNTY*

Sheriff's Department - Corrections
Sheriff's Department - Law Enforcement

AMADOR COUNTY*

Plymouth Police Department - Contract City
Sutter Creek Police Department

BUTTE COUNTY

District Attorney's Office
Probation Department
Chico Police Department
Gridley Police Department
Oroville Police Department

CALAVERAS COUNTY

Probation Department

*No Public Defender's Office

COLUSA COUNTY*

Probation Department
Sheriff's Department - Corrections
Sheriff's Department - Law Enforcement

CONTRA COSTA COUNTY

District Attorney's Office
Probation Department
Public Defender's Office
Sheriff's Department - Corrections
Sheriff's Department - Law Enforcement
Antioch Police Department
Brentwood Police Department
Clayton Police Department
Concord Police Department
El Cerrito Police Department
Kensington Police Department - Contract City
Martinez Police Department
Moraga Police Department - Contract City
Pinole Police Department
Pittsburg Police Department
Pleasant Hill Police Department
Richmond Police Department
San Pablo Police Department

DEL NORTE COUNTY

Probation Department
Sheriff's Department - Corrections
Sheriff's Department - Law Enforcement

EL DORADO COUNTY

District Attorney's Office
Probation Department
Public Defender's Office
Sheriff's Department - Corrections
Sheriff's Department - Law Enforcement
South Lake Tahoe Police Department

FRESNO COUNTY

District Attorney's Office
District Attorney's - Child Support
Probation Department
Public Defender's Office
Sheriff's Department - Corrections
Sheriff's Department - Law Enforcement
Clovis Police Department
Coalinga Police Department
Firebaugh Police Department
Fowler Police Department
Fresno Police Department
Huron Police Department
Kingsburg Police Department
Sanger Police Department

GLENN COUNTY*

HUMBOLDT COUNTY

District Attorney's Office
Public Defender's Office
Sheriff's Department - Corrections
Sheriff's Department - Law Enforcement
Eureka Police Department

IMPERIAL COUNTY

Sheriff's Department - Corrections
Sheriff's Department - Law Enforcement
Brawley Police Department
El Centro Police Department
Imperial Police Department

INYO COUNTY

Bishop Police Department

KERN COUNTY

District Attorney's Office
Probation Department
Public Defender's Office
Sheriff's Office - Corrections
Sheriff's Office - Law Enforcement
Arvin Police Department
Bakersfield Police Department
California City Police Department

*No Public Defender's Office

KERN COUNTY (continued)

Delano Police Department
Maricopa Police Department
McFarland Police Department
Ridgecrest Police Department
Taft Police Department
Stallion Springs (Tehachapi) - Contract City

KINGS COUNTY*

Corcoran Police Department
Hanford Police Department
Lemoore Police Department

LAKE COUNTY

Sheriff's Department - Corrections
Sheriff's Department - Law Enforcement
Lakeport Police Department

LASSEN COUNTY*

Probation Department
Sheriff's Department - Corrections
Sheriff's Department - Law Enforcement

LOS ANGELES COUNTY

Los Angeles City Prosecutor
District Attorney's Office
Probation Department
Public Defender's Office
Sheriff's Department - Corrections
Sheriff's Department - Law Enforcement
Alhambra Police Department
Baldwin Park Police Department
Bell Police Department
Burbank Police Department
Compton Police Department
Covina Police Department
Culver City Police Department
Downey Police Department
El Monte Police Department
El Segundo Police Department
Gardena Police Department
Glendale Police Department
Glendora Police Department
Hawthorne Police Department
Inglewood Police Department
Lakewood Police Department - Contract City

LOS ANGELES COUNTY (continued)

Los Angeles Police Department
Manhattan Beach Police Department
Maywood Police Department
Monrovia Police Department
Pasadena Police Department
Pomona Police Department
Redondo Beach Police Department
Rolling Hills Estates Police Department
San Dimas Police Department - Contract City
Sierra Madre Police Department
South Pasadena Police Department
Torrance Police Department
Walnut Police Department - Contract City
West Covina Police Department

MADERA COUNTY

District Attorney's Office
Chowchilla Police Department

MARIN COUNTY

Larkspur Police Department
Mill Valley Police Department
San Rafael Police Department
Tiburon Police Department

MARIPOSA COUNTY*

MENDOCINO COUNTY

Probation Department
Ukiah Police Department

MERCED COUNTY

Probation Department
Atwater Police Department
Merced Police Department

*No Public Defender's Office

MODOC COUNTY*

Probation Department
Sheriff's Department - Corrections
Sheriff's Department - Law Enforcement

MONO COUNTY

MONTEREY COUNTY

Carmel-by-the-Sea Police Department
Del Rey Oaks Police Department
District Attorney's Office
Marina Police Department
Public Defender's Office
Salinas Police Department
Sheriff's Department - Corrections
Sheriff's Department - Law Enforcement

NAPA COUNTY*

Calistoga Police Department
District Attorney's Office
Napa Police Department
St. Helena Police Department

NEVADA COUNTY

District Attorney's Office
Probation Department
Sheriff's Department - Corrections
Sheriff's Department - Law Enforcement

ORANGE COUNTY

District Attorney's Office
Probation Department
Public Defender's Office
Sheriff's Department - Corrections
Sheriff's Department - Law Enforcement

ORANGE COUNTY (continued)

Anaheim Police Department
Brea Police Department
Cypress Police Department
Fullerton Police Department
Garden Grove Police Department
Huntington Beach Police Department
Laguna Beach Police Department
Los Alamitos Police Department
Newport Beach Police Department
Orange Police Department
Placentia Police Department
San Clemente Police Department
San Juan Capistrano Police Department - Contract City
Santa Ana Police Department
Seal Beach Police Department
Stanton Police Department
Yorba Linda Police Department

PLACER COUNTY

Probation Department
Public Defender's Office
Auburn Police Department
Colfax Police Department

PLUMAS COUNTY*

Probation Department
Sheriff's Department - Corrections
Sheriff's Department - Law Enforcement

RIVERSIDE COUNTY

District Attorney's Office
Public Defender's Office
Banning Police Department
Beaumont Police Department
Hemet Police Department
Palm Desert Police Department - Contract City
Palm Springs Police Department
Perris Police Department
Riverside Police Department

*No Public Defender's Office

SACRAMENTO COUNTY

District Attorney's Office
Probation Department
Public Defender's Office
Sheriff's Department - Corrections
Sheriff's Department - Law Enforcement
Sacramento Police Department

SAN BENITO COUNTY

Probation Department
Public Defender's Office
Hollister Police Department

SAN BERNARDINO COUNTY

District Attorney's Office
Probation Department
Public Defender's Office
Sheriff's Department - Corrections
Sheriff's Department - Law Enforcement
Colton Police Department
Fontana Police Department
Montclair Police Department
Ontario Police Department
Rancho Cucamonga Police Department - Contract City
Redlands Police Department
Rialto Police Department
San Bernardino Police Department
Upland Police Department
Victorville Police Department

SAN DIEGO COUNTY

District Attorney's Office
Probation Department
Public Defender's Office
Sheriff's Department - Corrections
Sheriff's Department - Law Enforcement
Chula Vista Police Department
Coronado Police Department
Escondido Police Department
Imperial Beach Police Department
National City Police Department
Oceanside Police Department
San Diego Police Department

SAN FRANCISCO COUNTY

District Attorney's Office
Probation Department
Sheriff's Department - Corrections
Sheriff's Department - Law Enforcement
San Francisco Police Department

SAN JOAQUIN COUNTY

District Attorney's Office
Probation Department
Public Defender's Office
Sheriff's Department - Corrections
Sheriff's Department - Law Enforcement
Lodi Police Department
Manteca Police Department
Ripon Police Department
Stockton Police Department

SAN LUIS OBISPO COUNTY

District Attorney's Office
Probation Department
Sheriff's Department - Corrections
Sheriff's Department - Law Enforcement
Arroyo Grande Police Department
Morro Bay Police Department
Pismo Beach Police Department

SAN MATEO COUNTY

Probation Department
Public Defender's Office
Belmont Police Department
Burlingame Police Department
Colma Police Department
Foster City Police Department
Half Moon Bay Police Department
Hillsborough Police Department
Menlo Park Police Department
Millbrae Police Department
Pacifica Police Department
Redwood City Police Department
San Carlos Police Department
San Mateo Police Department

SANTA BARBARA COUNTY

District Attorney's Office
Probation Department
Public Defender's Office
Sheriff's Department - Corrections
Sheriff's Department - Law Enforcement

SANTA BARBARA COUNTY (continued)

Lompoc Police Department
Santa Barbara Police Department
Santa Maria Police Department

SANTA CLARA COUNTY

District Attorney's Office
Probation Department
Public Defender's Office
Campbell Police Department
Gilroy Police Department
Los Altos Police Department
Los Gatos Police Department
Monte Sereno Police Department - Contract City
Mountain View Police Department
Palo Alto Police Department
San Jose Police Department
Santa Clara Police Department
Sunnyvale Police Department

SANTA CRUZ COUNTY

District Attorney's Office
Sheriff's Department - Corrections
Sheriff's Department - Law Enforcement
Santa Cruz Police Department
Scotts Valley Police Department
Watsonville Police Department

SHASTA COUNTY

Probation Department
Public Defender's Office
Sheriff's Department - Corrections
Sheriff's Department - Law Enforcement
Redding Police Department

SIERRA COUNTY

District Attorney's Office
Public Defender's Office

SISKIYOU COUNTY

District Attorney's Office
Probation Department
Public Defender's Office
Sheriff's Department - Corrections
Sheriff's Department - Law Enforcement
Fort Jones Police Department
Yreka Police Department

SOLANO COUNTY

Probation Department
Public Defender's Office
Sheriff's Department - Corrections
Sheriff's Department - Law Enforcement
Fairfield Police Department
Suisun City Police Department
Vacaville Police Department
Vallejo Police Department

SONOMA COUNTY

District Attorney's Office
Probation Department
Public Defender's Office
Sheriff's Department - Corrections
Sheriff's Department - Law Enforcement
Healdsburg Police Department
Petaluma Police Department
Santa Rosa Police Department
Sebastopol Police Department
Sonoma Police Department

STANISLAUS COUNTY

Probation Department
Sheriff's Department - Corrections
Sheriff's Department - Law Enforcement
Modesto Police Department
Oakdale Police Department
Riverbank Police Department

SUTTER COUNTY

District Attorney's Office
Sheriff's Department - Corrections
Sheriff's Department - Law Enforcement
Live Oak Police Department

TEHAMA COUNTY*

Corning Police Department

TRINITY COUNTY

Public Defender's Office

*No Public Defender's Office

TULARE COUNTY

Sheriff's Department - Corrections
Sheriff's Department - Law Enforcement
Dinuba Police Department
Exeter Police Department
Farmersville Police Department
Lindsay Police Department
Porterville Police Department
Tulare Police Department
Visalia Police Department

TUOLUMNE COUNTY*

Probation Department
Sonora Police Department

VENTURA COUNTY

District Attorney's Office
Probation Department
Public Defender's Office
Sheriff's Department - Corrections
Sheriff's Department - Law Enforcement
Ojai Police Department
Oxnard Police Department
Port Hueneme Police Department
San Buenaventura Police Department
Simi Valley Police Department

YOLO COUNTY

District Attorney's Office
District Attorney's - Child Support
Probation Department
Public Defender's Office
Woodland Police Department

YUBA COUNTY

Probation Department
Marysville Police Department
Wheatland Police Department

END