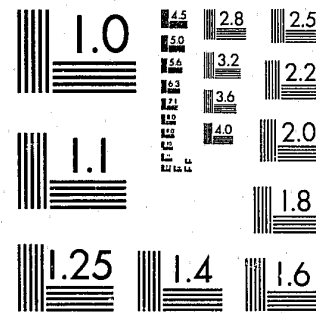


National Criminal Justice Reference Service

ncjrs

This microfiche was produced from documents received for inclusion in the NCJRS data base. Since NCJRS cannot exercise control over the physical condition of the documents submitted, the individual frame quality will vary. The resolution chart on this frame may be used to evaluate the document quality.



MICROCOPY RESOLUTION TEST CHART
NATIONAL BUREAU OF STANDARDS-1963-A

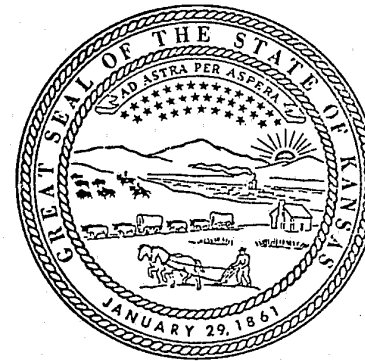
Microfilming procedures used to create this fiche comply with the standards set forth in 41CFR 101-11.504.

Points of view or opinions stated in this document are those of the author(s) and do not represent the official position or policies of the U. S. Department of Justice.

National Institute of Justice
United States Department of Justice
Washington, D. C. 20531

Date Filmed

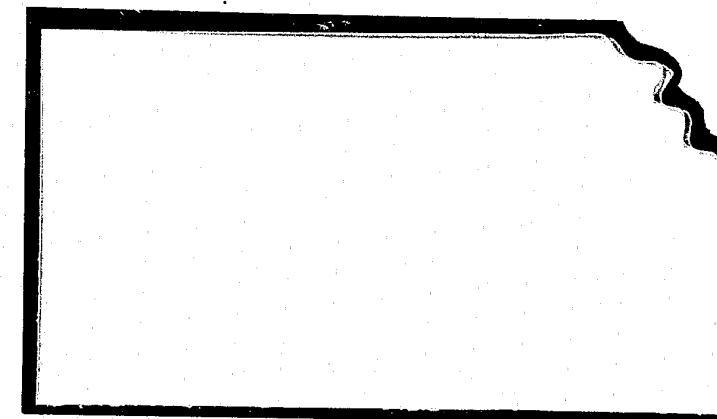
3/11/81



Governor's Committee On Criminal Administration

Statistical Analysis Center

75253



Governor's Committee on Criminal Administration

Mr. David W. P. O'Brien
Executive Director

Statistical Analysis Center

Mr. Michael E. Boyer
Director

503 Kansas Avenue
Topeka, Kansas 66603
913/296-3066

Prepared by

Alan Decker

KANSAS

CRIMINAL JUSTICE

DIRECTORY

NCJRS

JAN 29 1981

ACQUISITION

October 1, 1980

PREFACE

The Kansas Statistical Analysis Center (KSAC) was established through federal Comprehensive Data Systems (CDS) grant money on May 18, 1977. The CDS program was established on May 8, 1972 in the Law Enforcement Assistance Administration (LEAA) of the Department of Justice. Established to provide "better information in such vital areas as the incidence of crime, the effect of correction on recidivism, and the nature and scope of criminal justice operations and expenditures", the objectives of the CDS program were:

"To assist the states in establishing an integrated criminal justice information and statistics system and to encourage uniformity in the reporting of information state-to-state and on the national level."

"To collect systematically and report criminal justice information and statistics so as to provide uniform and reliable data on a year-to-year, state-to-state, agency-to-agency, and national basis. Criminal justice information collected and analyzed in this manner will provide a wider range of significant information of higher reliability to agency directors and managers, to operational personnel, to the public, to governmental decision makers, and to those charged with the responsibility of research and planning for a more effective and efficient criminal justice system."

"To eliminate unnecessary duplication of data collections, This is an important benefit from a single national system, while reserving significant latitude to the states in going beyond the minimum criteria."

The CDS program contained three core programs: SAC, whose ultimate purpose is to analyze statistical data concerning the administration of criminal justice agencies at all levels of government within the state, and, provide the results of this analysis to the appropriate criminal justice agencies, planning units, legislative and judicial branches of the state; Offender Based Transaction Statistics/Computerized Criminal Histories (OBTS/CCH), a tracking of offenders through the criminal justice system; and Uniform Crime Reporting (UCR), a project to collect uniform crime statistics.

The SAC project was administratively placed in the Governor's Committee of Criminal Administration, a non-operational, non-criminal justice agency. The UCR project was placed in the Kansas Bureau of Investigation as was the CCH portion of OBTS/CCH. To date, only a planning document for OBTS has been produced but no formal action has occurred to implement the program.

The purpose of the SAC is to provide the state of Kansas with the following:

*Objective interpretive analysis of criminal justice data, including that collected by the various line operating agencies.

*Statistical reports on crime and on the processing of criminal offenders in support of planning and operational criminal justice agencies.

*Technical assistance in the development of the CDS program in the state.

*Management and administrative statistics on the criminal justice resources expended in the state.

*Assistance in the orderly development of criminal justice information and statistical systems in the state.

*Uniform data on criminal justice processes for the preparation of national statistical reports.

This second volume of the Kansas Criminal Justice Directory (formerly the Directory of Kansas Criminal Justice Agencies, Organizations and Resources) is offered as one means of fostering inter-agency cooperation and contact. Should any entries be listed incorrectly or entries be missing that need inclusion, please contact the Statistical Analysis Center.

Michael E. Boyer

Alan Decker

Bonnie Benson

ACKNOWLEDGEMENTS

The sincerest gratitude is extended to the following persons whose cooperation and assistance has led to the publication of this second edition of the Kansas Criminal Justice Directory.

Staffs of:

The Kansas State Historical Library

The Topeka Public Library

The Office of Judicial Administrator

The Kansas League of Municipalities

Individual expressions of thanks to:

Ms. Joanie Lewerenz, Residential Services Specialist, Division of Children, Youth and Adults, Department of Social and Rehabilitation Services

Ms. Mary Ann Cummings, Commissioner's Office, Division of Children, Youth and Adults, Department of Social and Rehabilitation Services

Ms. Betty Bomar, Director, Crime Victims Reparations Board

Mr. Jack Richardson, Investigator, Crime Victims Reparations Board

Ms. Mary Lou McPhail, Research Analyst, Kansas Bureau of Investigation

Ms. Kristen Stroehmann, Deputy Director of Courts, Governor's Committee on Criminal Administration

Mr. William Southard, Fiscal Officer, Governor's Committee on Criminal Administration

Clerical staff of the Governor's Committee on Criminal Administration

Ms. Bonnie Benson, Research Analyst, Kansas Statistical Analysis Center

Finally, Mr. Alan Decker, Research Analyst, Kansas Statistical Analysis Center. Mr. Decker worked at great length to insure the second edition of the Directory would be as comprehensive, accurate and complete as was humanly possible. Mr. Decker expended considerable time in the resource sections of various libraries and countless hours on the telephone verifying the information contained within the covers of this publication. Mr. Decker's exhaustive efforts should serve the user of this volume well.

Michael E. Boyer, Director
Kansas Statistical Analysis Center

TABLE OF CONTENTS

PREFACE	Page iii
ACKNOWLEDGEMENTS	v
INTRODUCTION	xvii
CHAPTER I. CRIMINAL JUSTICE ADMINISTRATION, PLANNING, RESEARCH AND EDUCATION	1
Administration, Department of Budget, Division of Equal Employment Opportunity Office Information Systems and Computing, Division of	
Aging, Department on	
Civil Rights, Commission on	
Crime Victims Reparations Board	
Criminal Justice Ministry	
Criminal and Civil Problems Western Conference	
Education, Department of	
Governmental Ethics Commission	
Governor's Committee on Criminal Administration Statistical Analysis Center	
Health and Environment, Department of Registration and Health Statistics Services, Bureau of Maternal and Child Health, Bureau of	
Indian Center of Topeka, Inc.	
Insurance Department	
Kansas Association of Counties	
Kansas City Crime Commission	

Kansas City Council on Crime Prevention
 Kansas City, Kansas Community Crime Prevention Council
 Kansas Council on Crime and Delinquency
 Kansas Highway Patrol Training Center
 Kansas Law Enforcement Training Center
 Kansas Turnpike Authority
 League of Kansas Municipalities
 League of Women Voters of Kansas
 Legislative Research Department
 Mexican-American Affairs, Kansas Advisory Committee on
 NAACP Regional Office IV
 Kansas State Conference of NAACP Branches
 Social and Rehabilitation Services, Department of
 Alcohol and Drug Abuse, Special Programs Division
 Children, Youth and Adult Division
 Mental Health and Retardation Division
 Research and Statistics Section
 Revisor of Statutes, Office of
 Transportation, Department of
 Safety Department
 Universities and Community Colleges
 Vehicles, Division of

CHAPTER II. LAW ENFORCEMENT 9

State Agencies

Adjutant General
 Emergency Preparedness, Division of
 Kansas Air National Guard
 Kansas Army National Guard
 Alcoholic Beverage Control Board
 Attorney General
 Fire Marshal
 Arson Investigators, State
 Arson Investigators, Local

Fish and Game Commission
 Regional Offices

Fraud Detection Unit, Social and Rehabilitation Services

Kansas Bureau of Investigation, Topeka
 Great Bend
 Kansas City
 Valley Center

Kansas Highway Patrol
 Communications
 Chanute
 Garden City
 Hays
 Olathe
 Salina
 Topeka
 Wichita
 Wichita (Turnpike)

Kansas Intelligence Association

Kansas Law Enforcement and Civil Defense Communications Committee

State Park and Resources Authority

County Sheriff's Departments

Municipal Police Departments

University Police Departments

Law Enforcement Organizations
 Kansas Association of Chiefs of Police

Kansas Sheriff's Association

Kansas State Peace Officer's Association

CHAPTER III. JUDICIAL 27

Courts

Supreme Court of Kansas
 Chief Justice
 Judicial Administrator
 Clerk of Appellate Courts

Court of Appeals
 Chief Judge
 Clerk of Appellate Courts

Judicial Council

Unified Judicial Department

- District Courts
 - Administrative Judges
 - District Court Administrators
 - Clerks of District Courts
- Municipal Courts
- Court Services
 - Court Services Specialist
 - Chief Court Services Officers
- Prosecutorial
 - Attorney General, Office of the
 - County Attorneys
 - City Attorneys
 - Summer Legal Intern Prosecutor Program
 - Diversion Program, Sedgwick County District Attorney
- Defender Offices
 - Public Defender Offices
 - Supreme Court, Aid to Indigent Criminal Defendants
 - Judicial District Public Defenders
 - Third Judicial District
 - Eighth Judicial District
 - Twenty-eighth Judicial District
 - Other Defender Offices
 - American Civil Liberties Union
 - Commission on Civil Rights
 - Kansas Defender Project
 - Legal Services for Prisoners, Inc.
 - Topeka
 - Hutchinson
 - Public Defender Committee, Kansas Bar Association
 - Washburn Legal Clinic
- Legal Associations and Organizations
 - City Attorneys Association of Kansas
 - Conference of State Court Administrators
 - Kansas Bar Association
 - Kansas County and District Attorneys Association

Kansas District Clerks Association	
Kansas District Judges Association	
Kansas Municipal Judges Association	
Kansas Probation Officers Association	
Kansas Trial Lawyers Association	
CHAPTER IV. CORRECTIONS	53
State Agencies	
Corrections, Department of	
Secretary of Corrections	
Deputy Secretary of Institutions	
Deputy Secretary of Community Correctional Services	
Chief Jail Inspector	
Regional Jail Inspectors	
Adult Correctional Institutions	
Office of the Ombudsman for Corrections	
Probation and Parole Administrator	
Probation and Parole Offices	
Work Release Administrator	
Work Release Programs and Centers	
Kansas Adult Authority	
County Jails	
County and City Lockups	
County and City Holding Facilities	
State Security Hospital	
Juvenile Detention Centers	
CHAPTER V. JUVENILE	65
Bureau of Maternal and Child Health, Department of Health and Environment	
Chief Court Service Officers	
Juvenile Detention Centers	
Social and Rehabilitation Services, Department of	
Area Offices	
Children, Youth and Adult Division	
Kansas Neurological Institute	

Larned State Hospital
 Rainbow Mental Health Facility
 Youth Centers
 Atchison
 Beloit
 Topeka
 Youth Rehabilitation Centers
 Larned
 Osawatomie
 Topeka

Youth Service Organizations, Associations and Foundations
 Achievement Place Research
 Families by Choice
 Kansas Action for Children
 Kansas Association of Domestic Violence Programs
 Kansas Association of Licensed Private Child Care Agencies
 Kansas Children's Service League
 Topeka
 Garden City
 Hutchinson
 Kansas City
 Lawrence
 Wichita

Kansas Committee for Prevention of Child Abuse
 Kansas Council for Children and Youth
 Kansas Council on Crime and Delinquency
 Kansas Juvenile Detention Association
 Kansas Probation Officers Association
 Kaw View Crisis Program
 Menninger Foundation
 National Juvenile Detention Association
 SRS/Education/Court Liaison Committee
 Wyandotte Association for Child Care Services, Inc.

CHAPTER VI. VICTIM SERVICES, VICTIM/WITNESS SERVICES and HOT LINES . . . 73
 Victim Services

Battered Women's Shelter Project
 Battered Women's Task Force
 Domestic Violence Center
 Douglas County Rape Victim Support Project
 Headquarters
 Rape/Battered Women's Services
 Rape Crisis Center
 Rape Crisis Hot Line
 Rape Crisis Line
 Regional Crisis Center
 Reno County Rape Center
 Topekans Against Crime Sexual Assault Program
 Wichita Area Rape Center
 Women's Crisis Center
 Victim/Witness Programs
 Johnson County District Attorney
 McPherson County Attorney
 Secret Witness Telephone
 Sedgwick County District Attorney
 Hot Lines
 Arson Hot Line
 Consumer Protection Division
 Fraud Hot Line

CHAPTER VII. FEDERAL OFFICES 77

Criminal Justice Administration, Planning, Research and Education
 Federal Highway Administration
 Office of Justice Assistance, Research and Statistics
 Bureau of Jusitce Statistics
 National Institute of Justice
 Law Enforcement Assistance Administration

United States Bureau of the Census

Law Enforcement

Alcohol Tobacco and Firearms, Bureau of

Defense Investigative Service

Drug Enforcement Administration

Federal Aviation Administration

Federal Bureau of Investigation
 Kansas City
 Topeka
 Wichita

Fort Leavenworth Provost Marshal

Fort Riley Provost Marshal

Immigration and Naturalization Service

Internal Revenue Service
 Criminal Investigation Division

McConnell Air Force Base

Postal Inspector's Office

United States Coast Guard

United States Customs Service

United States Immigration Service

United States Marshal
 Kansas City
 Topeka
 Wichita

United States Secret Service

Judicial

Courts

United States District Court, Kansas City

United States District Court, Wichita

Prosecutorial

United States Attorney, Office of
 Kansas City
 Topeka
 Wichita

Defender Offices	
Federal Public Defender Offices	
Corrections	
Bureau of Prisons	
Federal Community Treatment Center	
U. S. Federal Prison at Leavenworth	
Parole Commission	
United States Probation Department for Kansas	
United States Probation Office	
INDEX	83
USER EVALUATION QUESTIONNAIRE	109

INTRODUCTION

The decentralized nature of the Kansas criminal justice system, and the local character of the incidence of crime itself evoke a seemingly fragmentary approach to dealing with crime and criminal justice in the state of Kansas. This environment lends a certain amorphousness to the concept of the Kansas criminal justice system, and, as a result, militates against comprehensive system analysis.

Individual agencies and organizations within the criminal justice system are readily identifiable, and agencies of similar goals and responsibilities are engaged in cooperative endeavors. Yet, as the goals of the many agencies necessarily become more specialized, the responsibilities and resources that specialization itself creates cause a narrowing of awareness to the overall mission of the Kansas criminal justice system. Hence, a sense of the overall participation and the resources available among the many agencies becomes nebulous to individual users.

In an effort to clarify the extent of participation in the criminal justice system, the Statistical Analysis Center of the Governor's Committee on Criminal Administration has prepared the Kansas Criminal Justice Directory. Intended as a compendium of state, local, public and private organizations that impact on the criminal justice system, this reference has been compiled in an effort to advance cross-agency information sharing, to reduce duplication by heightening awareness of existing facilities and programs, and to promote integrated criminal justice planning.

This second edition of the Kansas Criminal Justice Directory is an expanded and more comprehensive edition than the previous Directory. The 1980 directory includes approximately 1,000 agencies, offices and organizations which are organized into subject area chapters: Law Enforcement; Judicial; Corrections; Juvenile; Victim Services, Victim/Witness Services and Hot Lines. The final chapter provides a listing of federal criminal justice related offices located in Kansas. Each subject area chapter is organized hierarchically, i.e. state, district, county and municipal, followed by organizations and associations. Each agency listing within the body of the Directory includes the agency name, address, zip code, area code and telephone number. Also included in many entries is the county in which the municipality is located, in parentheses following the telephone number of the agency or office. An alphabetical index of agencies is included in this edition of the Directory. The Directory is designed to be inserted into a binder and updated as necessary.

Additions, corrections and assessments may be sent to:

Statistical Analysis Center
Governor's Committee on Criminal Administration
503 Kansas Avenue
Topeka, Kansas 66603
(913) 296-3066

CHAPTER I

CRIMINAL JUSTICE ADMINISTRATION, PLANNING, RESEARCH AND EDUCATION

ADMINISTRATION, DEPARTMENT OF
Second Floor
State Capitol Building
Topeka, Kansas 66612
(913) 296-3011

BUDGET, DIVISION OF
First Floor
State Capitol Building
Topeka, Kansas 66612
(913) 296-2436

EQUAL EMPLOYMENT OPPORTUNITY
OFFICE
Room 542
503 Kansas Avenue
Topeka, Kansas 66603
(913) 296-4288

INFORMATION SYSTEMS AND COM-
PUTING, DIVISION OF
Eleventh Floor
State Office Building
Topeka, Kansas 66612
(913) 296-3344

AGING, DEPARTMENT ON
Second Floor
610 West Tenth
Topeka, Kansas 66612
(913) 296-4986

CIVIL RIGHTS, COMMISSION ON
535 Kansas Avenue, Fifth Floor
Topeka, Kansas 66603
(913) 296-2211

CRIME VICTIMS REPARATIONS BOARD
Suite 343
503 Kansas Avenue
Topeka, Kansas 66603
(913) 296-2359

CRIMINAL JUSTICE MINISTRY
229 South Eighth
Kansas City, Kansas 66101
(913) 621-1504

CRIMINAL & CIVIL PROBLEMS
WESTERN CONFERENCE
P. O. Box 8282
Wichita, Kansas 67208
(316) 689-3707 or 268-5444

EDUCATION, DEPARTMENT OF
120 East Tenth
Topeka, Kansas 66612
(913) 296-3201

GOVERNMENTAL ETHICS COMMISSION
Fifth Floor
109 West Ninth Street
Mills Building
Topeka, Kansas 66612
(913) 296-4219

GOVERNOR'S COMMITTEE ON CRIMINAL
ADMINISTRATION
Second Floor
503 Kansas Avenue
Topeka, Kansas 66603
(913) 296-3066

STATISTICAL ANALYSIS CENTER
Governor's Committee on Criminal
Administration
Second Floor
503 Kansas Avenue
Topeka, Kansas 66603
(913) 296-3066

HEALTH AND ENVIRONMENT, DEPARTMENT OF
Building 740
Forbes Air Industrial Park
6700 South Topeka
Topeka, Kansas 66619
(913) 862-9360

REGISTRATION AND HEALTH STATISTICS
SERVICES, BUREAU OF
Department of Health and Environment
Forbes Air Industrial Park
6700 South Topeka
Topeka, Kansas 66619
(913) 862-9360

MATERNAL AND CHILD HEALTH, BUREAU OF
Building 740
Forbes Air Industrial Park
6700 South Topeka
Topeka, Kansas 66619
(913) 682-9360

INDIAN CENTER OF TOPEKA, INC.
407 West Lyman Road
Topeka, Kansas 66608
(913) 357-1811

INSURANCE DEPARTMENT
First Floor
State Office Building
Topeka, Kansas 66612
(913) 296-7815

KANSAS ASSOCIATION OF COUNTIES
112 West Seventh
Topeka, Kansas 66603
(913) 233-2271

KANSAS CITY CRIME COMMISSION
Ozark National Life Building
Kansas City, Missouri 64106
(816) 421-8102

KANSAS CITY COUNCIL ON CRIME
PREVENTION
3200 Wayne Avenue
Kansas City, Missouri 64109
(816) 924-6900

KANSAS CITY, KANSAS COMMUNITY
CRIME PREVENTION COUNCIL
500 Nebraska Avenue
Kansas City, Kansas 66101
(913) 371-6624

KANSAS COUNCIL ON CRIME AND
DELINQUENCY
229 South Eighth
Overland Park, Kansas 66204
(913) 621-1504

KANSAS HIGHWAY PATROL TRAINING
CENTER
1932 Scanlan
Salina, Kansas 67401
(913) 827-4437

KANSAS LAW ENFORCEMENT TRAINING
CENTER
P. O. Box 647
RFD 2
University of Kansas
Hutchinson, Kansas 67501
(316) 662-3378

KANSAS TURNPIKE AUTHORITY
P. O. Box 18007
Southeast Station
Wichita, Kansas 67218
(316) 682-4537

LEAGUE OF KANSAS MUNICIPALITIES
112 West Seventh Street
Topeka, Kansas 66603
(913) 354-9565

LEAGUE OF WOMEN VOTERS OF KANSAS
909 South West Topeka
Topeka, Kansas 66604
(913) 354-7478

LEGISLATIVE RESEARCH DEPARTMENT
545 North
Statehouse
Topeka, Kansas 66612
(913) 296-3181

MEXICAN-AMERICAN AFFAIRS, KANSAS ADVISORY
COMMITTEE ON
535 Kansas Avenue
Topeka, Kansas 66603
(913) 296-3465

NAACP REGIONAL OFFICE IV
Suite III
1408 North Kings Highway
St. Louis, Missouri 63113
(314) 361-8600

KANSAS STATE CONFERENCE OF NAACP BRANCHES
101 North Necon
Bonner Springs, Kansas 66012
(913) 422-2052

SOCIAL AND REHABILITATION SERVICES,
DEPARTMENT OF
Sixth Floor
State Office Building
Topeka, Kansas 66612
(913) 296-3271

ALCOHOL AND DRUG ABUSE
Special Programs Division
Biddle Building
2700 West Sixth
Topeka, Kansas 66606
(913) 296-3925

CHILDREN YOUTH AND ADULT DIVISION
2700 West Sixth
Topeka, Kansas 66606
(913) 296-3284

MENTAL HEALTH AND RETARDATION
DIVISION
Fifth Floor
State Office Building
Topeka, Kansas 66612
(913) 296-3774

RESEARCH AND STATISTICS SECTION
Sixth Floor
State Office Building
Topeka, Kansas 66612
(913) 296-3877

REVISOR OF STATUTES, OFFICE OF
Statehouse 322-S
Topeka, Kansas 66612
(913) 296-2321

TRANSPORTATION, DEPARTMENT OF
Seventh Floor
State Office Building
Topeka, Kansas 66612
(913) 296-3461

SAFETY DEPARTMENT
Department of Transportation
Tenth Floor
State Office Building
Topeka, Kansas 66612
(913) 296-3551

UNIVERSITIES AND COMMUNITY COLLEGES

COMMUNITY COLLEGES

ALLEN COUNTY COMMUNITY COLLEGE
1081 North Cottonwood
Iola, Kansas 66749
(316) 365-5116

BARTON COUNTY COMMUNITY COLLEGE
R. R. #3
Great Bend, Kansas 67530
(316) 792-2701

BUTLER COUNTY COMMUNITY COLLEGE
P. O. Box 888
El Dorado, Kansas 67042
(316) 321-5083

COFFEYVILLE COMMUNITY COLLEGE
Eleventh and Willow
Coffeyville, Kansas 67337
(316) 251-7700

COLBY COMMUNITY COLLEGE
1255 South Range
Colby, Kansas 67701
(913) 462-3984

COWLEY COUNTY COMMUNITY COLLEGE
125 South Second
Arkansas City, Kansas 67005
(316) 442-0430

DODGE CITY COMMUNITY COLLEGE
U.S. By-Pass #50 at 14th Street
Dodge City, Kansas 67801
(316) 225-1321

FORT SCOTT COMMUNITY COLLEGE
2108 South Horton
Fort Scott, Kansas 66701
(316) 223-2700

GARDEN CITY COMMUNITY COLLEGE
801 Campus Drive
P. O. Box 977
Garden City, Kansas 67846
(316) 276-7611

HIGHLAND COMMUNITY COLLEGE
P. O. Box 68
Highland, Kansas 66035
(913) 442-3238

HUTCHINSON COMMUNITY COLLEGE
1300 North Plum
Hutchinson, Kansas 67501
(316) 663-5781

INDEPENDENCE COMMUNITY COLLEGE
Brookside Drive & College Avenue
Independence, Kansas 67301
(316) 331-4100

JOHNSON COUNTY COMMUNITY COLLEGE
College Boulevard at Quivira Road
Overland Park, Kansas 66210
(913) 888-8500

KANSAS CITY KANSAS COMMUNITY COLLEGE
7250 State Avenue
Kansas City, Kansas 66112
(913) 334-1100

LABETTE COMMUNITY COLLEGE
200 South Fourteenth
Parsons, Kansas 67357
(316) 421-6700

NEOSHO COUNTY COMMUNITY COLLEGE
1000 South Allen
Chanute, Kansas 66720
(316) 431-2820

PRATT COMMUNITY COLLEGE
Highway 61
P. O. Box 309
Pratt, Kansas 67124
(316) 672-5641

SEWARD COUNTY COMMUNITY COLLEGE
1801 North Kansas
P. O. Box 1137
Liberal, Kansas 67901
(316) 624-1951

UNIVERSITIES

EMPORIA STATE UNIVERSITY
1200 Commercial
Emporia, Kansas 66801
(316) 343-1200

FORT HAYS STATE UNIVERSITY
Martin Allen 100
Hays, Kansas 67601
(913) 628-4000

KANSAS STATE UNIVERSITY
106 Anderson Hall
Manhattan, Kansas 66506
(913) 532-6011

FEDERAL ASSISTANCE PROGRAM
Retrieval System
Division of Extension
Community Resource Development
Umberger Hall
Kansas State University
Manhattan, Kansas 66506
(913) 532-6011

POPULATION RESEARCH LABORATORY
Department of Sociology
Kansas State University
Manhattan, Kansas 66506
(913) 532-6011

KANSAS WESLEYAN UNIVERSITY
Santa Fe at Claflin
Salina, Kansas 67401
(913) 827-5541

PITTSBURG STATE UNIVERSITY
1701 South Broadway
Pittsburg, Kansas 66762
(316) 231-7000

UNIVERSITY OF KANSAS
Strong Hall
Lawrence, Kansas 66045
(913) 864-2700

ACHIEVEMENT PLACE RESEARCH PROJECT
111 Haworth
University of Kansas
Lawrence, Kansas 66045
(913) 864-3446

CENTER FOR PUBLIC AFFAIRS
607 Blake
University of Kansas
Lawrence, Kansas 66045
(913) 864-3701

CENTER FOR RESEARCH, INC.
Nichols, Campus West
University of Kansas
Lawrence, Kansas 66045
(913) 864-4775

WASHBURN UNIVERSITY
Corrections and Criminal Justice
1700 College
Topeka, Kansas 66621
(913) 295-6411

WICHITA STATE UNIVERSITY
Criminal Justice Education
1845 Fairmont
Wichita, Kansas 67208
(316) 689-3456

LAW SCHOOLS

UNIVERSITY OF KANSAS
School of Law
108 Green
Lawrence, Kansas 66045
(913) 864-4550

WASHBURN UNIVERSITY OF TOPEKA
Law School
Law Dean's Office
Topeka, Kansas 66621
(913) 295-6660

VEHICLES, DIVISION OF
Department of Revenue
State Office Building
Topeka, Kansas 66612
(913) 296-3601

CHAPTER II
LAW ENFORCEMENT

Preceding page blank

STATE AGENCIES

ADJUTANT GENERAL
P. O. Box C-300
2800 Southwest Topeka
Topeka, Kansas 66611
(913) 233-7560

EMERGENCY PREPAREDNESS, DIVISION OF
2800 Southwest Topeka Boulevard
Topeka, Kansas 66611
(913) 233-9253

KANSAS AIR NATIONAL GUARD
Forbes Field
Topeka, Kansas 66619
(913) 862-1234

KANSAS ARMY NATIONAL GUARD
2800 Topeka Boulevard
Topeka, Kansas 66611
(913) 233-7560

ALCOHOLIC BEVERAGE CONTROL BOARD
Fifth Floor
State Office Building
Topeka, Kansas 66612
(913) 296-3946

ATTORNEY GENERAL
Second Floor
Kansas Judicial Center
Topeka, Kansas 66612
(913) 296-2215

FIRE MARSHAL
P. O. Box 19227
Building 730
Forbes Field
Topeka, Kansas 66619
(913) 296-3401

STATE ARSON INVESTIGATORS

ARSON INVESTIGATOR
2500 Drycreek
Great Bend, Kansas 67530
(316) 739-8518

ARSON INVESTIGATOR
14115 West 94th Terrace
Lenexa, Kansas 66215
(913) 888-4710

ARSON INVESTIGATOR
610 Cherokee
Parsons, Kansas 67357
(316) 421-0279

ARSON INVESTIGATOR
Building 730
Forbes Field
Topeka, Kansas 66619
(913) 296-3401

ARSON INVESTIGATOR
Route 4
Winfield, Kansas 67156
(316) 221-2632

ARSON INVESTIGATOR
305 North Prairie
Yates Center, Kansas 66783
(316) 625-2488

LOCAL ARSON INVESTIGATORS

ARSON INVESTIGATOR
Hutchinson Fire Department
18 East Avenue B
Hutchinson, Kansas 67501
(316) 665-7341

ARSON INVESTIGATOR
Kansas City Fire Department
815 North Sixth
Kansas City, Kansas 66101
(913) 841-7700

ARSON INVESTIGATOR
Lawrence Fire Department
910 Massachusetts
Lawrence, Kansas 66044
(913) 841-7700

ARSON INVESTIGATOR
Olathe Fire Department
City Hall
Olathe, Kansas 66061
(913) 782-2600

ARSON INVESTIGATOR
Salina Fire Department
222 West Elm
Salina, Kansas 67401
(913) 827-0411

ARSON INVESTIGATOR
Shawnee Fire Department
6435 Quivira Road
Shawnee, Kansas 66216
(913) 631-2500

Preceding page blank

ARSON INVESTIGATOR
Topeka Fire Department
324 Southeast Jefferson
Topeka, Kansas 66607
(913) 232-3000

ARSON INVESTIGATOR
Wichita Fire Department
455 North Main
Wichita, Kansas 67202
(316) 672-4451

FISH AND GAME COMMISSION
54 A, Route 2
Pratt, Kansas 67124
(316) 672-5911

SOUTHEAST
FISH AND GAME REGIONAL OFFICE
222 West Main
Chanute, Kansas 66720
(316) 431-0380

NORTHWEST
FISH AND GAME REGIONAL OFFICE
P. O. Box 366
Colby, Kansas 67701
(913) 462-3367

NORTHCENTRAL
FISH AND GAME REGIONAL OFFICE
511 Cedar
Concordia, Kansas 66901
(913) 243-3857

SOUTHWEST
FISH AND GAME REGIONAL OFFICE
808 Highway 56
Dodge City, Kansas 67801
(316) 227-8609

SOUTHCENTRAL
FISH AND GAME REGIONAL OFFICE
204 West Sixth
Newton, Kansas 67114
(316) 283-2482

FRAUD DETECTION UNIT
Social and Rehabilitation Services
Sixth Floor
State Office Building
Topeka, Kansas 66612
(913) 296-2431

KANSAS BUREAU OF INVESTIGATION
3420 Van Buren
Topeka, Kansas 66611
(913) 267-5000

KANSAS BUREAU OF INVESTIGATION
West Region Office
2824 West Tenth
Great Bend, Kansas 67530
(316) 792-4354

KANSAS BUREAU OF INVESTIGATION
7700 West 63rd
Kansas City, Kansas 66104
(913) 384-0331

KANSAS BUREAU OF INVESTIGATION
8400 Broadway
Valley Center, Kansas 67147
(316) 755-0331

KANSAS HIGHWAY PATROL
Townsite Plaza Number 2
Suite 130
200 East Sixth Street
Topeka, Kansas 66603
(913) 296-3801

HIGHWAY PATROL
Division One Office
220 Gage
Topeka, Kansas 66606
(913) 296-3102

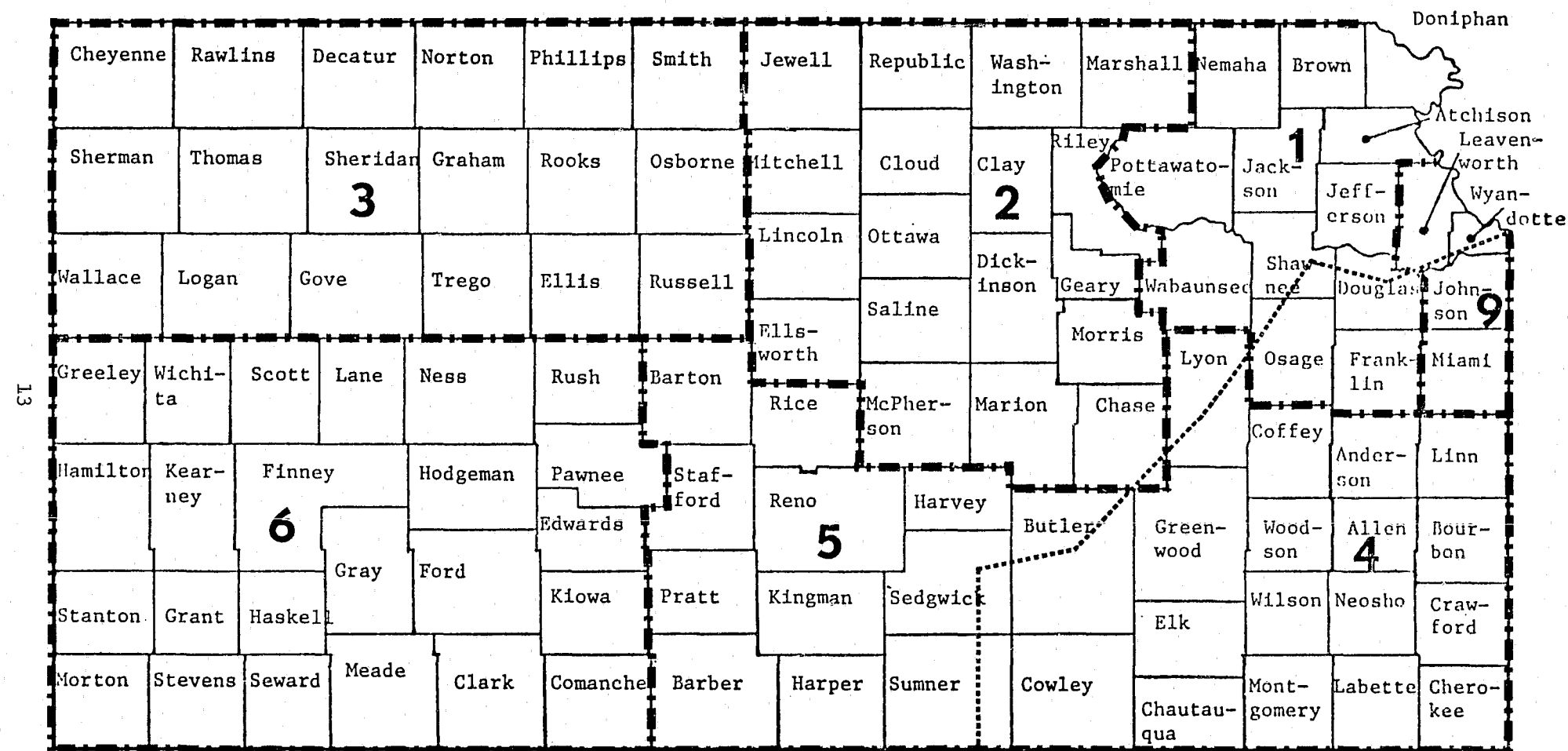
HIGHWAY PATROL
Division Two Office
1932 Scanlan
Salina, Kansas 67401
(913) 827-4437

HIGHWAY PATROL
Division Three Office
1205 East 22nd Street
Hays, Kansas 67601
(913) 625-3518

HIGHWAY PATROL
Division Four Office
301 West 14th Street
Chanute, Kansas 66720
(316) 431-2100

HIGHWAY PATROL
Division Five Office
3200 East 45th North
Wichita, Kansas 67220
(316) 744-0451

KANSAS HIGHWAY PATROL DIVISIONAL MAP



7 TURNPIKE

8 CAPITOL AREA SECURITY PATROL

Turnpike

HIGHWAY PATROL
Division Six Office
Garden City, Kansas 67846
(316) 276-3201

HIGHWAY PATROL
Division Seven Office
Southeast Station
Wichita, Kansas
(316) 682-4537

CAPITOL AREA SECURITY PATROL
Division Eight Office
First Floor
State Office Building
Topeka, Kansas 66611
(913) 296-3429

HIGHWAY PATROL
Division Nine Office
309 North Rogers Road
Olathe, Kansas 66061
(913) 782-8100

HIGHWAY PATROL COMMUNICATIONS
309 South Second
Norton, Kansas 67654
(913) 877-2562

KANSAS INTELLIGENCE ASSOCIATION
3420 Van Buren
Topeka, Kansas 66611
(913) 267-5000

KANSAS LAW ENFORCEMENT AND
CIVIL DEFENSE
Communications Committee
3420 Van Buren
Topeka, Kansas 66611
(913) 296-3026

STATE PARK AND RESOURCES
AUTHORITY
Room 520
503 Kansas Avenue
Topeka, Kansas 66603
(913) 296-2281

COUNTY SHERIFF'S DEPARTMENTS

ALLEN COUNTY SHERIFF
P. O. Box 433
Allen County Courthouse
Iola, Kansas 66749
(316) 365-2117

ANDERSON COUNTY SHERIFF
Anderson County Courthouse
Garnett, Kansas 66032
(913) 448-5428

ATCHISON COUNTY SHERIFF
518 Parallel
Atchison, Kansas 66002
(913) 367-3392

BARBER COUNTY SHERIFF
Barber County Courthouse
Medicine Lodge, Kansas 67104
(316) 886-5678

BARTON COUNTY SHERIFF
P. O. Box 87
1408 Kansas
Great Bend, Kansas 67530
(316) 793-7896

BOURBON COUNTY SHERIFF
P. O. Box 42
204 South National
Fort Scott, Kansas 66701
(316) 223-1440

BROWN COUNTY SHERIFF
413 Oregon
Hiawatha, Kansas 66434
(913) 742-7125

BUTLER COUNTY SHERIFF
121 South Gordy
El Dorado, Kansas 67042
(316) 321-1650

CHASE COUNTY SHERIFF
P. O. Box 327
Cottonwood Falls, Kansas 66845
(316) 273-6313

CHAUTAUQUA COUNTY SHERIFF
215 North Montgomery
Sedan, Kansas 67361
(316) 725-3588

CHEROKEE COUNTY SHERIFF
Cherokee County Courthouse
Columbus, Kansas 66725
(316) 429-3992

CHEYENEE COUNTY SHERIFF
P. O. Box 613
212 East Washington
St. Francis, Kansas 67756
(913) 332-2501

CLARK COUNTY SHERIFF
P. O. Box 365
221 West Ninth
Ashland, Kansas 67831
(316) 635-2802

CLAY COUNTY SHERIFF
P. O. Box 167
427 Court
Clay Center, Kansas 67432
(913) 632-5601

CLOUD COUNTY SHERIFF
P. O. Box 402
Ninth and Broadway
Concordia, Kansas 66901
(913) 243-3636

COFFEY COUNTY SHERIFF
605 Neosho
Burlington, Kansas 66839
(316) 364-2123

COMANCHE COUNTY SHERIFF
P. O. Box 487
Coldwater, Kansas 67029
(316) 582-2511

COWLEY COUNTY SHERIFF
P. O. Box 47
311 East Ninth
Winfield, Kansas 67156
(316) 221-4066

CRAWFORD COUNTY SHERIFF
229 South Ozark
Girard, Kansas 66743
(316) 724-8274

DECATUR COUNTY SHERIFF
P. O. Box 106
Decatur County Courthouse
Oberlin, Kansas 66749
(913) 475-2422

DICKINSON COUNTY SHERIFF
Dickinson County Courthouse
Abilene, Kansas 67410
(913) 263-4041

DONIPHAN COUNTY SHERIFF
P. O. Box 32
137 West Walnut
Troy, Kansas 66087
(913) 985-3711

DOUGLAS COUNTY SHERIFF
11 East Eleventh Street
Lawrence, Kansas 66044
(913) 841-7210

EDWARDS COUNTY SHERIFF
P. O. Box 371
Edwards County Courthouse
Kinsley, Kansas 67547
(316) 659-3636

ELK COUNTY SHERIFF
P. O. Box 127
Elk County Courthouse
Howard, Kansas 67349
(316) 374-2206

ELLIS COUNTY SHERIFF
P. O. Box 369
1200 Block and Fort
Hays, Kansas 67601
(913) 628-8229

ELLSWORTH COUNTY SHERIFF
P. O. Box 122
206 Court
Ellsworth, Kansas 67439
(913) 472-4166

FINNEY COUNTY SHERIFF
Eighth and St. John
Garden City, Kansas 67846
(316) 276-3226

FORD COUNTY SHERIFF
P. O. Box 747
705 First Avenue
Dodge City, Kansas 67801
(316) 225-4101

FRANKLIN COUNTY SHERIFF
305 South Main
Ottawa, Kansas 66067
(913) 242-3800

GEARY COUNTY SHERIFF
826 North Franklin
Junction City, Kansas 66441
(913) 762-2323

GOVE COUNTY SHERIFF
P. O. Box 42
Gove County Courthouse
Gove, Kansas 67736
(913) 938-2250

GRAHAM COUNTY SHERIFF
410 North Pomeroy
Hill City, Kansas 67642
(913) 674-2108

GRANT COUNTY SHERIFF
108 South Glenn
Ulysses, Kansas 67880
(316) 356-3500

GRAY COUNTY SHERIFF
Gray County Courthouse
Cimarron, Kansas 67835
(316) 855-3916

GREELEY COUNTY SHERIFF
P. O. Box K
Second and Harper
Tribune, Kansas 67879
(316) 376-4233

GREENWOOD COUNTY SHERIFF
Greenwood County Courthouse
Eureka, Kansas 67045
(316) 583-5568

HAMILTON COUNTY SHERIFF
P. O. Box 164
Hamilton County Courthouse
Main Street
Syracuse, Kansas 67878
(316) 384-5616

HARPER COUNTY SHERIFF
215 North Jennings
Anthony, Kansas 67003
(316) 842-5135

HARVEY COUNTY SHERIFF
P. O. Box 231
Harvey County Courthouse
Newton, Kansas 67114
(316) 283-5622

HASKELL COUNTY SHERIFF
Haskell County Courthouse
Sublette, Kansas 67877
(316) 675-2289

HODGEMAN COUNTY SHERIFF
P. O. Box 523
Hodgeman County Courthouse
Jetmore, Kansas 67854
(316) 357-8391

JACKSON COUNTY SHERIFF
P. O. Box 47
Jackson County Courthouse
Holton, Kansas 66436
(913) 364-2251

JEFFERSON COUNTY SHERIFF
P. O. Box 342
509 Delaware
Oskaloosa, Kansas 66066
(913) 863-2351

JEWELL COUNTY SHERIFF
307 North Commercial
Mankato, Kansas 66956
(913) 378-3194

JOHNSON COUNTY SHERIFF
Johnson County Courthouse
Kansas and Santa Fe
Olathe, Kansas 66061
(913) 782-5000

KEARNEY COUNTY SHERIFF
P. O. Box P
395 North Main
Lakin, Kansas 67860
(316) 355-6211

KINGMAN COUNTY SHERIFF
120 North Spruce
Kingman, Kansas 67068
(316) 532-5133

KIOWA COUNTY SHERIFF
P. O. Box 593
200 East Wisconsin
Greensburg, Kansas 67054
(316) 723-2183

LABETTE COUNTY SHERIFF
Labette County Courthouse
Oswego, Kansas 67356
(316) 795-2565

LANE COUNTY SHERIFF
P. O. Box 27
144 South Lane
Dighton, Kansas 67839
(316) 397-2452

LEAVENWORTH COUNTY SHERIFF
503 South Third
Leavenworth, Kansas 66048
(913) 682-5724

LINCOLN COUNTY SHERIFF
215 East Elm
Lincoln, Kansas 67455
(913) 524-4253

LINN COUNTY SHERIFF
P. O. Box B
Linn County Courthouse
Mound City, Kansas 66056
(913) 795-2666

LOGAN COUNTY SHERIFF
710 West Second
Oakley, Kansas 67748
(913) 672-3288

LYON COUNTY SHERIFF
Lyon County Courthouse
Fifth and Mechanic
Emporia, Kansas 66801
(316) 342-5545

MCPHERSON COUNTY SHERIFF
P. O. Box 438
119 North Maple
McPherson, Kansas 67460
(316) 241-2720

MARION COUNTY SHERIFF
P. O. Box 242
Marion County Courthouse
Marion, Kansas 66861
(316) 382-2144

MARSHALL COUNTY SHERIFF
1201 Broadway
Marysville, Kansas 66508
(913) 562-3141

MEADE COUNTY SHERIFF
P. O. Box 628
Meade County Courthouse
Meade, Kansas 67864
(316) 873-2104

MIAMI COUNTY SHERIFF
Miami County Courthouse
Paola, Kansas 66071
(913) 294-3232

MITCHELL COUNTY SHERIFF
P. O. Box 388
114 South Campbell
Beloit, Kansas 67420
(913) 738-3523

MONTGOMERY COUNTY SHERIFF
Montgomery County Courthouse
Independence, Kansas 67301
(316) 331-1500

MORRIS COUNTY SHERIFF
Morris County Courthouse
Council Grove, Kansas 66846
(316) 767-6310

MORTON COUNTY SHERIFF
P. O. Box 801
Morton County Courthouse
Elkhart, Kansas 67950
(316) 697-4313

NEMAHA COUNTY SHERIFF
212 North Sixth
Seneca, Kansas 66538
(913) 336-2311

NEOSHO COUNTY SHERIFF
P. O. Box 153
Neosho County Courthouse
Erie, Kansas 66733
(316) 244-3243

NESS COUNTY SHERIFF
P. O. Box 254
Ness County Courthouse
Ness City, Kansas 67560
(913) 798-3611

NORTON COUNTY SHERIFF
Norton County Courthouse
Norton, Kansas 67554
(913) 877-3347

OSAGE COUNTY SHERIFF
P. O. Box 213
Osage County Courthouse
Lyndon, Kansas 66451
(913) 828-3344

OSBORNE COUNTY SHERIFF
110 South Fifth
Osborne, Kansas 67473
(913) 346-2522

OTTAWA COUNTY SHERIFF
317 North Concord Street
Minneapolis, Kansas 67467
(913) 932-2161

PAWNEE COUNTY SHERIFF
116 West Eighth
Larned, Kansas 67550
(316) 285-2211

PHILLIPS COUNTY SHERIFF
P. O. Box 177
Phillips County Courthouse
Phillipsburg, Kansas 67661
(913) 543-2107

POTTAWATOMIE COUNTY SHERIFF
P. O. Box 129
Pottawatomie County Courthouse
Westmoreland, Kansas 66549
(913) 457-3481

PRATT COUNTY SHERIFF
303 South Oak
Pratt, Kansas 67124
(316) 672-2321

RAWLINS COUNTY SHERIFF
Rawlins County Courthouse
Atwood, Kansas 67730
(913) 626-3208

RENO COUNTY SHERIFF
206 West First
Hutchinson, Kansas 67501
(316) 665-6601

REPUBLIC COUNTY SHERIFF
Republic County Courthouse
Belleville, Kansas 66935
(913) 527-5128

RICE COUNTY SHERIFF
P. O. Box 416
121 East Avenue North
Lyons, Kansas 67554
(316) 257-2363

RILEY COUNTY SHERIFF
Sixth and Colorado
Manhattan, Kansas 66502
(913) 537-2112

ROOKS COUNTY SHERIFF
P. O. Box 215
Rooks County Courthouse
Stockton, Kansas 67669
(913) 425-6312

RUSH COUNTY SHERIFF
715 Elm Street
Lacrosse, Kansas 67548
(913) 222-2578

RUSSELL COUNTY SHERIFF
P. O. Box 332
210 East Fourth
Russell, Kansas 67665
(913) 483-2151

SALINE COUNTY SHERIFF
P. O. Box 1606
251 North Tenth
Salina, Kansas 67401
(913) 825-5487

SCOTT COUNTY SHERIFF
303 Court Street
Scott City, Kansas 67871
(316) 872-3220

SEDGWICK COUNTY SHERIFF
525 North Main
Wichita, Kansas 67203
(316) 263-6011

SEWARD COUNTY SHERIFF
112 East Fifth
Liberal, Kansas 67901
(316) 624-3931

SHAWNEE COUNTY SHERIFF
200 East Seventh
Topeka, Kansas 66603
(913) 295-4044

SHERIDAN COUNTY SHERIFF
P. O. Box 544
940 Eighth Street
Hoxie, Kansas 67740
(913) 675-3481

SHERMAN COUNTY SHERIFF
P. O. Box 127
813 Broadway
Goodland, Kansas 67735
(913) 899-6180

SMITH COUNTY SHERIFF
212 South Grant
Smith Center, Kansas 66967
(913) 282-3541

STAFFORD COUNTY SHERIFF
P. O. Box 386
Stafford County Courthouse
St. John, Kansas 67576
(316) 549-3247

STANTON COUNTY SHERIFF
P. O. Box 520
Stanton County Courthouse
Johnson, Kansas 67855
(316) 492-2170

STEVENS COUNTY SHERIFF
P. O. Box 459
713 Harrison
Hugoton, Kansas 67951
(316) 544-4386

SUMNER COUNTY SHERIFF
P. O. Box 277
500 North Washington
Wellington, Kansas 67152
(316) 326-3622

THOMAS COUNTY SHERIFF
225 North Court
Colby, Kansas 67701
(913) 462-6725

TREGO COUNTY SHERIFF
Russell Avenue
WaKeeney, Kansas 67672
(913) 743-2201

WABAUNSEE COUNTY SHERIFF
P. O. Box 176
Wabaunsee County Courthouse
Alma, Kansas 66401
(913) 765-3323

WALLACE COUNTY SHERIFF
P. O. Box 233
Wallace County Courthouse
Sharon Springs, Kansas 67758
(913) 852-4288

WASHINGTON COUNTY SHERIFF
23 C Street
Washington, Kansas 66968
(913) 325-2293

WICHITA COUNTY SHERIFF
P. O. Box 328
Wichita County Courthouse
Leoti, Kansas 67861
(316) 375-2723

WILSON COUNTY SHERIFF
Wilson County Courthouse
Fredonia, Kansas 66736
(316) 378-3622

WOODSON COUNTY SHERIFF
P. O. Box 272
Woodson County Courthouse
Yates Center, Kansas 66783
(316) 625-2147

WYANDOTTE COUNTY SHERIFF
710 North Seventh
Kansas City, Kansas 66101
(913) 573-2861

MUNICIPAL POLICE DEPARTMENTS

ABILENE POLICE CHIEF
114 South Campbell
Abilene, Kansas 67410
(913) 263-1213 (Dickinson)

ANTHONY POLICE CHIEF
124 South Bluff
Anthony, Kansas 67003
(316) 842-5123 (Harper)

ARKANSAS CITY POLICE CHIEF
Central Avenue and First Street
Arkansas City, Kansas 67005
(316) 442-3344 (Cowley)

ARMA POLICE CHIEF
701 East Washington
Arma, Kansas 66712
(316) 347-4500 (Crawford)

ATCHISON POLICE CHIEF
515 Kansas
Atchison, Kansas 66002
(913) 367-4323 (Atchison)

ATTICA POLICE CHIEF
141 West Avenue B
Attica, Kansas 67009
(316) 254-7291 (Harper)

AUGUSTA POLICE CHIEF
Sixth and School Streets
Augusta, Kansas 67010
(316) 775-6355 (Butler)

BALDWIN CITY POLICE CHIEF
City Hall
Baldwin City, Kansas 66006
(913) 594-3455 (Douglas)

BASEHOR POLICE CHIEF
P. O. Box 293
Basehor, Kansas 66007
(913) 724-1370 (Leavenworth)

BAXTER SPRINGS POLICE CHIEF
Eleventh Park
Baxter Springs, Kansas 66713
(316) 856-2112 (Cherokee)

BELLEVILLE POLICE CHIEF
P. O. Box 280
1819 L Street
Belleville, Kansas 66935
(913) 527-2188 (Republic)

BELOIT POLICE CHIEF
123 North Hersey
Beloit, Kansas 67420
(913) 738-2203 (Mitchell)

BLUE RAPIDS POLICE CHIEF
200 North Main
Blue Rapids, Kansas 66411
(913) 226-7971 (Marshall)

BONNER SPRINGS POLICE CHIEF
205 East Second
Bonner Springs, Kansas 66012
(913) 422-1020 (Wyandotte)

BURLINGTON POLICE CHIEF
Third and Hudson
City Hall
Burlington, Kansas 66839
(316) 364-2244 (Coffey)

CANEY POLICE CHIEF
City Hall
Caney, Kansas 67333
(316) 879-2141 (Montgomery)

CAWKER CITY POLICE CHIEF
City Building
Cawker City, Kansas 67430
(913) 781-4828 (Mitchell)

CHANUTE POLICE CHIEF
Municipal Building
Chanute, Kansas 66720
(316) 431-1700 (Neosho)

CHERRYVALE POLICE CHIEF
123 West Main
Cherryvale, Kansas 67335
(316) 336-2400 (Montgomery)

CLAY CENTER POLICE CHIEF
427 Court Street
Clay Center, Kansas 67432
(913) 632-2121 (Clay)

COFFEYVILLE POLICE CHIEF
P. O. Box 498
Seventh and Walnut
Coffeyville, Kansas 67337
(316) 251-1700 (Montgomery)

COLBY POLICE CHIEF
225 North Court
Colby, Kansas 67701
(913) 462-6711 (Thomas)

CONCORDIA POLICE CHIEF
Sixth and Lincoln
Concordia, Kansas 67901
(913) 243-3131 (Cloud)

COLUMBUS POLICE CHIEF
City Building
Columbus, Kansas 66725
(316) 429-3333 (Cherokee)

CONWAY SPRINGS POLICE CHIEF
P. O. Box 431
208 West Spring
Conway Springs, Kansas 67031
(316) 456-2250 (Sumner)

COUNCIL GROVE POLICE CHIEF
200 West Main
Council Grove, Kansas 66846
(316) 767-5200 (Morris)

DERBY POLICE CHIEF
229 North Baltimore
Derby, Kansas 67037
(316) 788-3771 (Sedgwick)

DODGE CITY POLICE CHIEF
705 First Street
Dodge City, Kansas 67801
(316) 225-4101 (Ford)

DOWNS POLICE CHIEF
P. O. Box 58
715 Railroad
Downs, Kansas 67437
(913) 434-6622 (Osborne)

EDWARDSVILLE POLICE CHIEF
10337 Kaw Drive
Edwardsville, Kansas 66111
(913) 441-6983 (Wyandotte)

EL DORADO POLICE CHIEF
220 East First Street
El Dorado, Kansas 67042
(316) 321-9100 (Butler)

ELKHART POLICE CHIEF
P. O. Box 801
Elkhart, Kansas 67950
(316) 697-2151 (Morton)

ELLINWOOD POLICE CHIEF
1 North Main
Ellinwood, Kansas 67526
(316) 564-3001 (Barton)

ELLIS POLICE CHIEF
P. O. Box 82
911 Washington
Ellis, Kansas 67637
(913) 726-4462 (Ellis)

ELLSWORTH POLICE CHIEF
P. O. Box 163
206 Court
Ellsworth, Kansas 67439
(913) 472-4416 (Ellsworth)

EMPORIA POLICE CHIEF
P. O. Box 928
104 East Fifth
Emporia, Kansas 66801
(316) 342-1766 (Lyon)

ENTERPRISE POLICE CHIEF
208 West First
Enterprise, Kansas 67441
(913) 934-2323 (Dickinson)

EUDORA POLICE CHIEF
1031 Maple Street
Eudora, Kansas 66025
(913) 841-7210 (Douglas)

EUREKA POLICE CHIEF
114 South Main
Eureka, Kansas 67045
(316) 583-5526 (Greenwood)

FAIRWAY POLICE CHIEF
5252 Belinder Road
Shawnee, Kansas 66205
(913) 262-2364 (Johnson)

FORT SCOTT POLICE CHIEF
P. O. Box 142
204 South National
Fort Scott, Kansas 66701
(316) 223-1700 (Bourbon)

FREDONIA POLICE CHIEF
422 North Seventh
Fredonia, Kansas 66736
(316) 378-2424 (Wilson)

FRONTENAC POLICE CHIEF
315 East McKay
Frontenac, Kansas 66762
(316) 231-9210 (Crawford)

GALENA POLICE CHIEF
501 Main
Galena, Kansas 66739
(316) 783-5065 (Cherokee)

GARDEN CITY POLICE CHIEF
P. O. Box 499
116 East Chestnut
Garden City, Kansas 67846
(316) 275-4251 (Finney)

GARDNER POLICE CHIEF
112 South Elm Avenue
Gardner, Kansas 66030
(913) 884-7312 (Johnson)

GARNETT POLICE CHIEF
401 South Main
Garnett, Kansas 66032
(913) 448-6832 (Anderson)

GIRARD POLICE CHIEF
100 South Ozark
Girard, Kansas 66743
(316) 724-4211 (Crawford)

GOODLAND POLICE CHIEF
P. O. Box 597
222 East Ninth Street
Goodland, Kansas 67735
(913) 899-3667 (Sherman)

GREAT BEND POLICE CHIEF
1217 Williams
Great Bend, Kansas 67530
(316) 792-4311 (Barton)

HARPER POLICE CHIEF
1008 Oak
Harper, Kansas 67058
(316) 896-2853 (Harper)

HAYS POLICE CHIEF
P. O. Box 369
1200 Block and Fort
Hays, Kansas 67601
(913) 625-3434 (Ellis)

HAYSVILLE POLICE CHIEF
711 East Grand
Haysville, Kansas 67060
(316) 524-4243 (Sedgwick)

HERINGTON POLICE CHIEF
700 South Broadway
Herington, Kansas 67449
(913) 258-2226 (Dickinson)

HIAWATHA POLICE CHIEF
413 Oregon
Hiawatha, Kansas 66434
(913) 742-2155 (Brown)

HILL CITY POLICE CHIEF
205 North Pomeroy
Hill City, Kansas 67642
(913) 674-2244 (Graham)

HILLSBORO POLICE CHIEF
116 East Grand
Hillsboro, Kansas 67063
(316) 947-3440 (Marion)

HOISINGTON POLICE CHIEF
P. O. Box 418
109 East First
Hoisington, Kansas 67544
(316) 653-4125 (Barton)

HOLTON POLICE CHIEF
211 West Fifth
Holton, Kansas 66436
(913) 486-2694 (Jackson)

HORTON POLICE CHIEF
P. O. Box 30
205 East Eighth
Horton, Kansas 66439
(913) 486-2894 (Brown)

HUMBOLT POLICE CHIEF
701 Bridge Street
Humbolt, Kansas 66748
(316) 473-2341 (Allen)

HUTCHINSON POLICE CHIEF
210 West First
Hutchinson, Kansas 67501
(316) 665-6601 (Reno)

INDEPENDENCE POLICE CHIEF
120 North Sixth
Independence, Kansas 67301
(316) 331-1700 (Montgomery)

IOLA POLICE CHIEF
2 West Jackson
Iola, Kansas 66749
(316) 365-3144 (Allen)

JOHNSON COUNTY PARK POLICE
6501 Antioch Road
Merriam, Kansas 66202
(913) 631-7050 (Johnson)

JUNCTION CITY POLICE CHIEF
P. O. Box 287
Seventh & Jefferson Street
Junction City, Kansas 66441
(913) 238-5912 (Geary)

KANSAS CITY POLICE CHIEF
One Civic Center Plaza
Kansas City, Kansas 66101
(913) 371-2000 (Wyandotte)

KINGMAN POLICE CHIEF
P. O. Box 168
332 North Main
Kingman, Kansas 67068
(316) 532-3138 (Kingman)

KINSLEY POLICE CHIEF
721 Marsh Avenue
Kinsley, Kansas 67547
(316) 659-3611 (Edwards)

KIOWA POLICE CHIEF
P. O. Box 206
517 South Seventh
Kiowa, Kansas 67070
(316) 825-4124 (Barber)

LANSING POLICE CHIEF
108 South Main
Lansing, Kansas 66043
(913) 727-3233 (Leavenworth)

LARNED POLICE CHIEF
P. O. Box 110
215 Main
Larned, Kansas 67550
(316) 285-3188 (Pawnee)

LAWRENCE POLICE CHIEF
111 East Eleventh
Lawrence, Kansas 66044
(913) 841-7210 (Douglas)

LEAVENWORTH POLICE CHIEF
City Hall
Fifth and Seneca
Leavenworth, Kansas 66048
(913) 651-2260 (Leavenworth)

LEAWOOD POLICE CHIEF
9615 Lee Boulevard
Leawood, Kansas 66026
(913) 642-5800 (Johnson)

LENEXA POLICE CHIEF
9224 Haskins
Lenexa, Kansas 66205
(913) 888-4110 (Johnson)

LIBERAL POLICE CHIEF
P. O. Box 830
325 North Washington Avenue
Liberal, Kansas 67901
(316) 624-2525 (Seward)

LYONS POLICE CHIEF
109 South Grand
Lyons, Kansas 67554
(316) 257-2355 (Rice)

MANHATTAN POLICE CHIEF
600 Colorado
Manhattan, Kansas 66502
(913) 537-2112 (Riley)

MARION POLICE CHIEF
P. O. Box 30
City Building
Marion, Kansas 66861
(316) 382-2144 (Marion)

MARYSVILLE POLICE CHIEF
617 Broadway
Marysville, Kansas 66508
(913) 562-2343 (Marshall)

McPHERSON POLICE CHIEF
312 East Kansas Avenue
McPherson, Kansas 67460
(316) 241-2500 (McPherson)

MEDICINE LODGE POLICE CHIEF
213 North Main Street
Medicine Lodge, Kansas 67104
(316) 886-5678 (Barber)

MERRIAM POLICE CHIEF
9000 West 62nd Terrace
Merriam, Kansas 66202
(913) 677-3111 (Johnson)

MISSION POLICE CHIEF
6090 Woodson Road
Mission, Kansas 66202
(913) 722-0697 (Johnson)

MISSION HILLS POLICE CHIEF
7700 Mission Road
Prairie Village, Kansas 66208
(913) 642-5151 (Johnson)

MISSION WOODS POLICE CHIEF
Suite 200
1900 West 47th Place
Westwood, Kansas 66205
(913) 362-3737 (Johnson)

MULVANE POLICE CHIEF
221 North Second
Mulvane, Kansas 67110
(316) 777-1143 (Sedgwick)

NEODESHA POLICE CHIEF
108 South Fourth
Neodesha, Kansas 66757
(316) 325-3031 (Wilson)

NESS CITY POLICE CHIEF
P. O. Box 308
109 South Iowa
Ness City, Kansas 67560
(913) 798-3596 (Ness)

NEWTON POLICE CHIEF
120 East Seventh
Newton, Kansas 67114
(316) 283-4411 (Harvey)

NORTON POLICE CHIEF
301 East Washington
Norton, Kansas 67654
(913) 877-3355 (Norton)

OAKLEY POLICE CHIEF
209 Hudson Avenue
Oakley, Kansas 67748
(913) 672-3711 (Logan)

OLATHE POLICE CHIEF
P. O. Box 768
Kansas & Santa Fe
Olathe, Kansas 66061
(913) 782-2600 (Johnson)

OSAGE CITY POLICE CHIEF
727 South Fourth
Osage City, Kansas 66523
(913) 528-3131 (Osage)

OSAWATOMIE POLICE CHIEF
Fifth and Main
Osawatomie, Kansas 66064
(913) 755-2101 (Miami)

OSBORNE POLICE CHIEF
First Street
Osborne, Kansas 67473
(913) 346-5721 (Osborne)

OTTAWA POLICE CHIEF
P. O. Box 76
720 West Second
Ottawa, Kansas 66067
(913) 242-1700 (Franklin)

OVERLAND PARK POLICE CHIEF
8500 Antioch
Overland Park, Kansas 66212
(913) 381-5252 (Johnson)

PAOLA POLICE CHIEF
P. O. Box 409
19 East Peoria
Paola, Kansas 66071
(913) 294-4191 (Miami)

PARSONS POLICE CHIEF
1819 1/2 Washington
Parsons, Kansas 67357
(316) 421-1700 (Labette)

PHILLIPSBURG POLICE CHIEF
P. O. Box 244
425 F Street
Phillipsburg, Kansas 67661
(913) 543-5151 (Phillips)

PITTSBURG POLICE CHIEF
611 North Pine
Pittsburg, Kansas 66762
(316) 231-1700 (Crawford)

PLAINVILLE POLICE CHIEF
P. O. Box 266
222 West Mill
Plainville, Kansas 67663
(913) 434-2222 (Rooks)

PRAIRIE VILLAGE POLICE CHIEF
P. O. Box 8070
7700 Mission Road
Prairie Village, Kansas 66208
(913) 642-6868 (Johnson)

PRATT POLICE CHIEF
303 South Oak
Pratt, Kansas 67124
(316) 672-5551 (Pratt)

ROELAND PARK POLICE CHIEF
4600 West 51st Street
Shawnee, Kansas 66205
(913) 677-3363 (Johnson)

RUSSELL POLICE CHIEF
800 Main Street
Russell, Kansas 67665
(913) 483-2121 (Russell)

SABETHA POLICE CHIEF
P. O. Box 187
805 Main
Sabetha, Kansas 66534
(913) 284-2113 (Brown)

SALINA POLICE CHIEF
P. O. Box 1086
255 North Tenth
Salina, Kansas 67401
(913) 825-0571 (Saline)

SATANTA POLICE CHIEF
City Hall
Satanta, Kansas 67870
(316) 649-2331 (Haskell)

SCOTT CITY POLICE CHIEF
303 Court Street
Scott City, Kansas 67871
(316) 872-2133 (Scott)

SEDAN POLICE CHIEF
P. O. Box 276
City Hall
Sedan, Kansas 67361
(316) 725-3134 (Chautauqua)

SENECA POLICE CHIEF
Sixth & Main
Seneca, Kansas 66538
(913) 336-2141 (Nemaha)

SILVER LAKE POLICE CHIEF
City Offices
Silver Lake, Kansas 66539
(913) 582-5162 (Shawnee)

SHAWNEE POLICE CHIEF
11110 Johnson Drive
Shawnee, Kansas 66203
(913) 631-2155 (Johnson)

SMITH CENTER POLICE CHIEF
214 South Washington
Smith Center, Kansas 66967
(913) 282-6555 (Smith)

SOLOMON POLICE CHIEF
City Hall
116 West Main
Solomon, Kansas 67480
(913) 655-3311 (Dickinson)

SOUTH HUTCHINSON POLICE CHIEF
2 South Main
South Hutchinson, Kansas 67505
(316) 665-6601 (Reno)

STOCKTON POLICE CHIEF
P. O. Box 184
115 South Walnut
Stockton, Kansas 67669
(913) 425-6220 (Rooks)

SUBLETTE POLICE CHIEF
City Building
Sublette, Kansas 67877
(316) 675-2603 (Haskell)

TONGANOXIE POLICE CHIEF
325 Delaware
Tonganoxie, Kansas 66086
(913) 845-2311 (Leavenworth)

TOPEKA POLICE CHIEF
204 West Fifth
Topeka, Kansas 66603
(913) 354-9551 (Shawnee)

TOPEKA AIRPORT AUTHORITY
P. O. Box 19053
Building 612
Forbes Field
Topeka, Kansas 66619
(913) 862-9250 (Shawnee)

ULYSSES POLICE CHIEF
108 South Glenn
Ulysses, Kansas 67880
(316) 356-3500 (Grant)

VALLEY CENTER POLICE CHIEF
P. O. Box 188
117 North Park
Valley Center, Kansas 67147
(316) 755-1535 (Sedgwick)

WAKEENEY POLICE CHIEF
P. O. Box 185
408 Russell
Wakeeney, Kansas 67672
(913) 743-2424 (Trego)

WAMEGO POLICE CHIEF
P. O. Box 181
410 Elm
Wamego, Kansas 66547
(913) 456-9553 (Pottawatomie)

WELLINGTON POLICE CHIEF
202 North Washington
Wellington, Kansas 67152
(316) 326-3331 (Sumner)

WESTWOOD POLICE CHIEF
Suite 200
1900 West 47th Place
Westwood, Kansas 66205
(913) 362-3737 (Johnson)

WESTWOOD HILLS POLICE CHIEF
Suite 200
1900 West 47th Place
Westwood Hills, Kansas 66205
(913) 362-3737 (Johnson)

WICHITA POLICE CHIEF
455 North Main
Wichita, Kansas 67203
(316) 263-6011 (Sedgwick)

WINFIELD POLICE CHIEF
812 Millington
Winfield, Kansas 67005
(316) 442-3344 (Cowley)

YATES CENTER POLICE CHIEF
117 East Rutledge
Yates Center, Kansas 66783
(316) 625-2252 (Woodson)

UNIVERSITY POLICE DEPARTMENTS

EMPORIA STATE UNIVERSITY
Safety & Security
Naval Building
Emporia, Kansas 66801
(316) 343-1200

FORT HAYS STATE UNIVERSITY
Security
Power Plant
Hays, Kansas 67601
(913) 628-5304

KANSAS STATE UNIVERSITY
Security & Traffic
Anderson Hall
Manhattan, Kansas 66502
(913) 532-6412

PITTSBURG STATE UNIVERSITY
Campus Security
Pittsburg, Kansas 66762
(316) 231-7000

UNIVERSITY OF KANSAS
Security & Parking
Hoch Auditorium
Lawrence, Kansas 66044
(913) 864-3516

UNIVERSITY OF KANSAS MEDICAL
CENTER
39th & Rainbow
Kansas City, Kansas 66103
(913) 560-5030

WICHITA STATE UNIVERSITY
Police Department
Box 3
1805 North Harvard
Wichita, Kansas 67208
(316) 689-3450

LAW ENFORCEMENT ORGANIZATIONS

KANSAS ASSOCIATION OF CHIEFS
OF POLICE
108 South Fourth
Neodesha, Kansas 66757
(316) 325-3031

KANSAS SHERIFF'S ASSOCIATION
c/o Adrian Farver
Burlingame, Kansas 66413
(913) 654-3300

KANSAS STATE PEACE OFFICER'S ASSOCIATION
P. O. Box 2592
Wichita, Kansas 67201
(316) 942-5356

CHAPTER III

JUDICIAL

COURTS

SUPREME COURT OF KANSAS

CHIEF JUSTICE
Kansas Judicial Center
301 West Tenth Street
Topeka, Kansas 66612
(913) 296-3807

JUDICIAL ADMINISTRATOR
Kansas Judicial Center
301 West Tenth Street
Topeka, Kansas 66612
(913) 296-2256

CLERK OF APPELLATE COURTS
Kansas Judicial Center
301 West Tenth Street
Topeka, Kansas 66612
(913) 296-3229

COURT OF APPEALS

CHIEF JUDGE
Kansas Judicial Center
301 West Tenth Street
Topeka, Kansas 66612
(913) 296-3807

CLERK OF APPELLATE COURTS
Kansas Judicial Center
301 West Tenth Street
Topeka, Kansas 66612
(913) 296-3229

JUDICIAL COUNCIL
Kansas Judicial Center
301 West Tenth Street
Topeka, Kansas 66612
(913) 296-2498

UNIFIED JUDICIAL DEPARTMENT
Kansas Judicial Center
301 West Tenth Street
Topeka, Kansas 66612
(913) 296-2256

DISTRICT COURTS

ADMINISTRATIVE JUDGES

FIRST JUDICIAL DISTRICT
Division 1, District Court
Leavenworth County Courthouse
Leavenworth, Kansas 66048
(913) 682-0591

SECOND JUDICIAL DISTRICT
Judge District Court
Pottawatomie County Courthouse
Westmoreland, Kansas 66549
(913) 457-3392

THIRD JUDICIAL DISTRICT
Division 3
Shawnee County Courthouse
Topeka, Kansas 66603
(913) 295-4130

FOURTH JUDICIAL DISTRICT
Division 1, District Court
Franklin County Courthouse
Ottawa, Kansas 66067
(913) 242-6000

FIFTH JUDICIAL DISTRICT
Lyon County Courthouse
Emporia, Kansas 66801
(316) 342-1081

SIXTH JUDICIAL DISTRICT
Bourbon County Courthouse
210 South National
Fort Scott, Kansas 66701
(316) 223-1380

SEVENTH JUDICIAL DISTRICT
Division 2, District Court
Judicial Center
Lawrence, Kansas 66044
(913) 841-7700

EIGHTH JUDICIAL DISTRICT
Division 2, District Court
Geary County Courthouse
Junction City, Kansas 66441
(913) 238-6005

NINTH JUDICIAL DISTRICT
Harvey County Courthouse
Newton, Kansas 67114
(316) 283-7232

TENTH JUDICIAL DISTRICT
Division 6, District Court
Johnson County Courthouse
Olathe, Kansas 66061
(913) 782-5000

ELEVENTH JUDICIAL DISTRICT
Division 1, District Court
Judicial Center
Pittsburg, Kansas 66762
(316) 231-3570

TWELFTH JUDICIAL DISTRICT
Lincoln County Courthouse
216 East Lincoln
Lincoln, Kansas 67455
(913) 524-4085

THIRTEENTH JUDICIAL DISTRICT
Division 2, District Court
Butler County Courthouse
El Dorado, Kansas 67402
(316) 321-3960

FOURTEENTH JUDICIAL DISTRICT
Montgomery County Courthouse
Independence, Kansas 67301
(316) 331-3960

FIFTEENTH JUDICIAL DISTRICT
Thomas County Courthouse
Colby, Kansas 67701
(913) 462-2462

SIXTEENTH JUDICIAL DISTRICT
Ford County Courthouse
1 Central and Spruce
Dodge City, Kansas 67801
(316) 255-4091

SEVENTEENTH JUDICIAL DISTRICT
Norton County Courthouse
Norton, Kansas 67654
(913) 877-3373

EIGHTEENTH JUDICIAL DISTRICT
Division 3, District Court
Sedgwick County Courthouse
Wichita, Kansas 67203
(316) 268-7302

NINETEENTH JUDICIAL DISTRICT
Division 1, District Court
Cowley County Courthouse
Winfield, Kansas 67156
(316) 532-5151

TWENTIETH JUDICIAL DISTRICT
Division 1, District Court
Rice County Courthouse
Lyons, Kansas 67554
(316) 257-5041

TWENTY-FIRST JUDICIAL DISTRICT
Division 1, District Court
Riley County Courthouse
Manhattan, Kansas 66502
(913) 776-5046

TWENTY-SECOND JUDICIAL DISTRICT
Brown County Courthouse
Hiawatha, Kansas 66434
(913) 742-3522

TWENTY-THIRD JUDICIAL DISTRICT
Ellis County Courthouse
Hays, Kansas 67601
(913) 625-3811

TWENTY-FOURTH JUDICIAL DISTRICT
P. O. Box 347
Larned, Kansas 67550
(316) 285-2188

TWENTY-FIFTH JUDICIAL DISTRICT
Finney County Courthouse
Garden City, Kansas 67846
(316) 275-0112

TWENTY-SIXTH JUDICIAL DISTRICT
Morton County Courthouse
Elkhart, Kansas 67950
(316) 697-2482

TWENTY-SEVENTH JUDICIAL DISTRICT
Division 1, District Court
Reno County Courthouse
206 West First
Hutchinson, Kansas 67501
(316) 662-4411

TWENTY-EIGHTH JUDICIAL DISTRICT
Division 1, District Court
Saline County Courthouse
Salina, Kansas 67401
(913) 825-7241

TWENTY-NINTH JUDICIAL DISTRICT
Division 3, District Court
Wyandotte County Courthouse
Kansas City, Kansas 66101
(913) 573-2917

DISTRICT COURT ADMINISTRATORS

FIRST JUDICIAL DISTRICT
District Court Administrator
Leavenworth County Courthouse
Leavenworth, Kansas 66048
(913) 682-0591

THIRD JUDICIAL DISTRICT
District Court Administrator
Shawnee County Courthouse
Topeka, Kansas 66603
(913) 295-4017

FOURTH JUDICIAL DISTRICT
District Court Administrator
Courthouse
Ottawa, Kansas 66067
(913) 242-6000

EIGHTH JUDICIAL DISTRICT
District Court Administrator
Geary County Courthouse
Junction City, Kansas 66441
(913) 238-3722

TENTH JUDICIAL DISTRICT
District Court Administrator
Johnson County Courthouse
Olathe, Kansas 66061
(913) 782-5000

ELEVENTH JUDICIAL DISTRICT
District Court Administrator
Judicial Center
Pittsburg, Kansas 66762
(316) 231-0310

EIGHTEENTH JUDICIAL DISTRICT
District Court Administrators
Sedgwick County Courthouse
525 North Main
Wichita, Kansas 67203
(316) 268-7302

TWENTIETH JUDICIAL DISTRICT
District Court Administrator
Rice County Courthouse
Lyons, Kansas 67554
(316) 257-2971

TWENTY-NINTH JUDICIAL DISTRICT
District Court Administrator
Wyandotte County Courthouse
Kansas City, Kansas 66101
(913) 573-2901

CLERKS OF DISTRICT COURTS

FIRST JUDICIAL DISTRICT

CLERK OF DISTRICT COURT
Atchison County
P. O. Box 408
Atchison, Kansas 66002
(913) 367-7400

CLERK OF DISTRICT COURT
Leavenworth County Courthouse
Leavenworth, Kansas 66048
(913) 682-0591

SECOND JUDICIAL DISTRICT

CLERK OF DISTRICT COURT
Jackson County Courthouse
Holton, Kansas 66436
(913) 364-2191

CLERK OF DISTRICT COURT
Jefferson County Courthouse
Oskaloosa, Kansas 66066
(913) 863-2251

CLERK OF DISTRICT COURT
Pottawatomie County
P. O. Box 129
Westmoreland, Kansas 66549
(913) 457-3392

CLERK OF DISTRICT COURT
Wabaunsee County Courthouse
Alma, Kansas 66401
(913) 765-3714

THIRD JUDICIAL DISTRICT

CHIEF CLERK OF DISTRICT COURT
Shawnee County
Courthouse, 200 East Seventh
Topeka, Kansas 66603
(913) 295-4317

FOURTH JUDICIAL DISTRICT

CLERK OF DISTRICT COURT
Allen County Courthouse
Iola, Kansas 66749
(316) 365-5145

CLERK OF DISTRICT COURT
Box 305
Anderson County Courthouse
Garnett, Kansas 66032
(913) 448-6886

CLERK OF DISTRICT COURT
Coffey County Courthouse
Burlington, Kansas 66839
(316) 364-8457

CLERK OF DISTRICT COURT
Franklin County
Court Building
Ottawa, Kansas 66067
(913) 242-6000

CLERK OF DISTRICT COURT
Osage County Courthouse
717 Topeka Avenue
Lyndon, Kansas 66541
(913) 828-4713

CLERK OF DISTRICT COURT
Woodson County (Box 2)
Courthouse
Yates Center, Kansas 66783
(316) 625-2187

FIFTH JUDICIAL DISTRICT

CLERK OF DISTRICT COURT
Box 207
Chase County Courthouse
Cottonwood Falls, Kansas 66845
(316) 273-6319

CHIEF CLERK OF DISTRICT COURT
Lyon County Courthouse
Emporia, Kansas 66801
(316) 342-0119

SIXTH JUDICIAL DISTRICT

CHIEF CLERK OF DISTRICT COURT
Bourbon County Courthouse
Fort Scott, Kansas 66701
(316) 223-0780

CLERK OF DISTRICT COURT
Linn County Courthouse
Mound City, Kansas 66056
(913) 795-2660

CLERK OF DISTRICT COURT
Miami County Courthouse
Paola, Kansas 66071
(913) 294-3326

SEVENTH JUDICIAL DISTRICT

CHIEF CLERK OF DISTRICT COURT
Douglas County
Judicial Center
Lawrence, Kansas 66044
(913) 841-7700

EIGHTH JUDICIAL DISTRICT

CLERK OF DISTRICT COURT
Dickinson County Courthouse
Abilene, Kansas 67410
(913) 263-3142

CLERK OF DISTRICT COURT
Geary County Courthouse
Box 718
Junction City, Kansas 66441
(913) 238-3722

CLERK OF DISTRICT COURT
Box 224
Marion County Courthouse
Marion, Kansas 66861
(316) 382-2104

CLERK OF DISTRICT COURT
Morris County Courthouse
Council Grove, Kansas 66846
(316) 767-5418

NINTH JUDICIAL DISTRICT

CLERK OF DISTRICT COURT
Harvey County Courthouse
Newton, Kansas 67114
(316) 283-7232

CHIEF CLERK OF DISTRICT COURT
McPherson County
Box 110
301 Kansas
McPherson, Kansas 67460
(316) 241-3422

TENTH JUDICIAL DISTRICT

CHIEF CLERK OF DISTRICT COURT
Johnson County Courthouse
Olathe, Kansas 66061
(913) 782-5000

ELEVENTH JUDICIAL DISTRICT

CLERK OF DISTRICT COURT
Cherokee County Courthouse
Columbus, Kansas 66725
(316) 429-3880

CLERK OF DISTRICT COURT
Crawford County
Box 1348
120 West Fourth
Pittsburg, Kansas 66762
(316) 231-0380

CLERK OF DISTRICT COURT
Labette County
Box 210
Municipal Building
Parsons, Kansas 67357
(316) 421-4120

CLERK OF DISTRICT COURT
Neosho County
Third Floor, Memorial Building
Chanute, Kansas 66720
(316) 431-2410

CLERK OF DISTRICT COURT
Wilson County
Box 246
Fredonia, Kansas 66736
(316) 378-2381

TWELFTH JUDICIAL DISTRICT

CHIEF CLERK OF DISTRICT COURT
Cloud County Courthouse
Concordia, Kansas 66901
(913) 243-4388

CLERK OF DISTRICT COURT
Jewell County Courthouse
307 North Commercial
Mankato, Kansas 66956
(913) 378-3651

CLERK OF DISTRICT COURT
Lincoln County Courthouse
216 East Lincoln
Lincoln, Kansas 67455
(913) 524-4057

CLERK OF DISTRICT COURT
Mitchell County
Box 66
Courthouse
Beloit, Kansas 67420
(913) 738-3753

CLERK OF DISTRICT COURT
Republic County Courthouse
Belleville, Kansas 66935
(913) 527-2021

CLERK OF DISTRICT COURT
Washington County Courthouse
Washington, Kansas 66968
(913) 325-2381

THIRTEENTH JUDICIAL DISTRICT

CHIEF CLERK OF DISTRICT COURT
Butler County Courthouse
El Dorado, Kansas 67042
(316) 321-1200

CLERK OF DISTRICT COURT
Chautauqua County Courthouse
215 North Chautauqua
Sedan, Kansas 67361
(316) 725-3282

CLERK OF DISTRICT COURT
Elk County
Box 306
Howard, Kansas 67349
(316) 374-2370

CLERK OF DISTRICT COURT
Greenwood County Courthouse
Eureka, Kansas 67045
(316) 583-6041

FOURTEENTH JUDICIAL DISTRICT

CHIEF CLERK OF DISTRICT COURT
Montgomery County Courthouse
Independence, Kansas 67301
(316) 331-2550

FIFTEENTH JUDICIAL DISTRICT

CLERK OF DISTRICT COURT
Graham County
410 North Pomeroy
Hill City, Kansas 67642
(913) 674-2241

CLERK OF DISTRICT COURT
Rooks County Courthouse
Stockton, Kansas 67669
(913) 425-6362

CHIEF CLERK OF DISTRICT COURT
Sheridan County
Box 753
Hoxie, Kansas 67740
(913) 675-3451

CLERK OF DISTRICT COURT
Sherman County
Box 948
813 Broadway
Goodland, Kansas 67735
(913) 899-5681

CLERK OF DISTRICT COURT
Thomas County
300 North Court
Colby, Kansas 67701
(913) 462-2462

SIXTEENTH JUDICIAL DISTRICT

CLERK OF DISTRICT COURT
Clark County
913 Highland
Ashland, Kansas 67831
(316) 635-2753

CLERK OF DISTRICT COURT
Comanche County
201 South New York
Coldwater, Kansas 67029
(316) 582-2182

CHIEF CLERK OF DISTRICT COURT
Ford County
Box 788
Dodge City, Kansas 67801
(316) 225-4981

CLERK OF DISTRICT COURT
Gray County
300 South Main
Cimarron, Kansas 67835
(316) 855-3812

CLERK OF DISTRICT COURT
Kiowa County
211 East Florida
Greensburg, Kansas 67054
(316) 723-3317

CLERK OF DISTRICT COURT
Meade County Courthouse
Meade, Kansas 67864
(316) 873-2781

SEVENTEENTH JUDICIAL DISTRICT

CLERK OF DISTRICT COURT
Cheyenne County
Box 646
212 East Washington
St. Francis, Kansas 67756
(913) 332-2351

CHIEF CLERK OF DISTRICT COURT
Decatur County Courthouse
Oberlin, Kansas 67749
(913) 475-2932

CLERK OF DISTRICT COURT
Box 70
Norton County Courthouse
Norton, Kansas 67654
(913) 877-5177

CLERK OF DISTRICT COURT
Osborne County Courthouse
Osborne, Kansas 67473
(913) 346-5911

CLERK OF DISTRICT COURT
Phillips County Courthouse
Phillipsburg, Kansas 67661
(913) 543-2734

CLERK OF DISTRICT COURT
Rawlins County
607 Main
Atwood, Kansas 67730
(913) 626-3465

CLERK OF DISTRICT COURT
Smith County Courthouse
Smith Center, Kansas 66967
(913) 282-6871

EIGHTEENTH JUDICIAL DISTRICT

CHIEF CLERK OF DISTRICT COURT
Sedgwick County Courthouse
Wichita, Kansas 67203
(316) 268-7302

NINETEENTH JUDICIAL DISTRICT

CLERK OF DISTRICT COURT
Barber County Courthouse
Medicine Lodge, Kansas 67104
(316) 886-5639

CLERK OF DISTRICT COURT
Cowley County
City Building
Winfield, Kansas 67156
(316) 442-2660

CLERK OF DISTRICT COURT
Harper County Courthouse
Anthony, Kansas 67003
(316) 842-3721

CLERK OF DISTRICT COURT
Kingman County Courthouse
Kingman, Kansas 67068
(316) 532-5151

CHIEF CLERK OF DISTRICT COURT
Pratt County Courthouse
Pratt, Kansas 67124
(316) 672-5995

CLERK OF DISTRICT COURT
Summer County Courthouse
Wellington, Kansas 67152
(316) 326-5936

TWENTIETH JUDICIAL DISTRICT

CLERK OF DISTRICT COURT
Barton County
Box 1184
1400 Main
Great Bend, Kansas 67530
(316) 792-4771

CLERK OF DISTRICT COURT
Ellsworth County
210 North Kansas
Ellsworth, Kansas 67439
(913) 472-4052

CHIEF CLERK OF DISTRICT COURT
Rice County Courthouse
Lyons, Kansas 67554
(316) 257-2971

CLERK OF DISTRICT COURT
Russell County Courthouse
Russell, Kansas 67665
(913) 483-5641

CLERK OF DISTRICT COURT
Stafford County Courthouse
St. John, Kansas 67576
(316) 549-3296

TWENTY-FIRST JUDICIAL DISTRICT

CLERK OF DISTRICT COURT
Clay County Courthouse
Clay Center, Kansas 67432
(913) 632-3443

CHIEF CLERK OF DISTRICT COURT
Riley County Courthouse
Manhattan, Kansas 66502
(913) 776-6511

TWENTY-SECOND JUDICIAL DISTRICT

CHIEF CLERK OF DISTRICT COURT
Brown County Courthouse
Hiawatha, Kansas 66434
(913) 742-7481

CLERK OF DISTRICT COURT
Doniphan County Courthouse
Troy, Kansas 66087
(913) 985-3723

CLERK OF DISTRICT COURT
Marshall County Courthouse
Marysville, Kansas 66508
(913) 562-5301

CLERK OF DISTRICT COURT
Nemaha County
607 Nemaha
Seneca, Kansas 66538
(913) 336-2146

TWENTY-THIRD JUDICIAL DISTRICT

CHIEF CLERK OF DISTRICT COURT
Ellis County Courthouse
Hays, Kansas 67601
(913) 472-4052

CLERK OF DISTRICT COURT
Gove County Courthouse
Gove, Kansas 67736
(913) 938-2310

CLERK OF DISTRICT COURT
Logan County
710 West Second
Oakley, Kansas 67748
(913) 672-3654

CLERK OF DISTRICT COURT
Trego County
216 Main
Wakeeney, Kansas 67672
(913) 743-2148

CLERK OF DISTRICT COURT
Wallace County
Box 8
Sharon Springs, Kansas 67758
(913) 852-4282

TWENTY-FOURTH JUDICIAL DISTRICT

CLERK OF DISTRICT COURT
Edwards County Courthouse
Kinsley, Kansas 67547
(316) 659-2442

CLERK OF DISTRICT COURT
Hodgeman County Courthouse
Jetmore, Kansas 67854
(316) 357-6522

CLERK OF DISTRICT COURT
Lane County
144 South Lane
Dighton, Kansas 67839
(316) 397-5552

CLERK OF DISTRICT COURT
Box 28
Ness County Courthouse
Ness City, Kansas 67560
(913) 798-3128

CLERK OF DISTRICT COURT
Pawnee County Courthouse
Larned, Kansas 67550
(316) 285-6937

CHIEF CLERK OF DISTRICT COURT
Rush County Courthouse
LaCrosse, Kansas 67548
(913) 222-2718

TWENTY-FIFTH JUDICIAL DISTRICT

CHIEF CLERK OF DISTRICT COURT
Finney County Courthouse
Garden City, Kansas 67846
(316) 275-0111

CLERK OF DISTRICT COURT
Greeley County Courthouse
Tribune, Kansas 67879
(316) 376-4292

CLERK OF DISTRICT COURT
Hamilton County
Box 745
Syracuse, Kansas 67878
(316) 384-5159

CLERK OF DISTRICT COURT
Kearny County
305 North Main
Lakin, Kansas 67860
(316) 355-6481

CLERK OF DISTRICT COURT
Scott County Courthouse
Scott City, Kansas 67871
(316) 872-3650

CLERK OF DISTRICT COURT
Wichita County Courthouse
Leoti, Kansas 67861
(316) 375-4454

TWENTY-SIXTH JUDICIAL DISTRICT

CLERK OF DISTRICT COURT
Grant County
Box 614
108 South Glenn
Ulysses, Kansas 67880
(316) 356-1526

CLERK OF DISTRICT COURT
Haskell County Courthouse
Sublette, Kansas 67877
(316) 675-2671

CLERK OF DISTRICT COURT
Box 825
Morton County Courthouse
Elkhart, Kansas 67950
(316) 697-2563

CLERK OF DISTRICT COURT
Stanton County Courthouse
Johnson, Kansas 67855
(316) 492-2180

CLERK OF DISTRICT COURT
Stevens County
Box 338
200 East Sixth
Hugoton, Kansas 67951
(316) 544-2484

CHIEF CLERK OF DISTRICT COURT
Seward County Courthouse
Liberal, Kansas 67901
(316) 624-0211 Ext. 16

TWENTY-SEVENTH JUDICIAL DISTRICT

CHIEF CLERK OF DISTRICT COURT
Reno County Courthouse
206 West First
Hutchinson, Kansas 67501
(316) 662-4411

TWENTY-EIGHTH JUDICIAL DISTRICT

CLERK OF DISTRICT COURT
Ottawa County
307 North Concord
Minneapolis, Kansas 67467
(913) 392-2917

CHIEF CLERK OF DISTRICT COURT
Saline County
P. O. Box 1746
Salina, Kansas 67401
(913) 825-7241

TWENTY-NINTH JUDICIAL DISTRICT

CHIEF CLERK OF DISTRICT COURT
Wyandotte County Courthouse
Kansas City, Kansas 66101
(913) 573-2901

MUNICIPAL COURTS

ABILENE MUNICIPAL COURT
419 Broadway
Abilene, Kansas 67410
(913) 263-2550 (Dickinson)

ARKANSAS CITY MUNICIPAL COURT
First and Central
Arkansas City, Kansas 67005
(316) 442-0280 (Cowley)

ATCHISON MUNICIPAL COURT
515 Kansas Avenue
Atchison, Kansas 66002
(913) 367-5081 (Atchison)

AUGUSTA MUNICIPAL COURT
Sixth and School
Augusta, Kansas 67010
(316) 775-6301 (Butler)

BAXTER SPRINGS MUNICIPAL COURT
P. O. Box 577
Eleventh and Park
Baxter Springs, Kansas 66713
(316) 856-2114 (Cherokee)

BONNER SPRINGS MUNICIPAL COURT
205 East Second
Bonner Springs, Kansas 66012
(913) 442-1020 (Wyandotte)

CHANUTE MUNICIPAL COURT
Second and Lincoln
Chanute, Kansas 66720
(316) 431-9300 (Neosho)

CLAY CENTER MUNICIPAL COURT
P. O. Box 117
427 Court
Clay Center, Kansas 67432
(913) 632-5454 (Clay)

COFFEYVILLE MUNICIPAL COURT
Seventh and Walnut
Coffeyville, Kansas 67337
(316) 251-7000 (Montgomery)

COLBY MUNICIPAL COURT
585 North Franklin
Colby, Kansas 67701
(913) 462-2573 (Thomas)

CONCORDIA MUNICIPAL COURT
Sixth and Lincoln
Concordia, Kansas 66901
(913) 243-2670 (Cloud)

DERBY MUNICIPAL COURT
229 North Baltimore
Derby, Kansas 67037
(316) 788-1519 (Sedgwick)

DODGE CITY MUNICIPAL COURT
705 First Avenue
Dodge City, Kansas 67801
(316) 225-1391 (Ford)

EL DORADO MUNICIPAL COURT
P. O. Box 792
City Hall
El Dorado, Kansas 67042
(316) 321-9100 (Butler)

EMPORIA MUNICIPAL COURT
522 Mechanic
Emporia, Kansas 66801
(316) 342-5105 (Lyon)

FAIRWAY MUNICIPAL COURT
5252 Belinder Road
Fairway, Kansas 66205
(913) 262-0350 (Johnson)

FORT SCOTT MUNICIPAL COURT
One East Third
Fort Scott, Kansas 66701
(316) 223-0550 (Bourbon)

GARDEN CITY MUNICIPAL COURT
P. O. Box 499
116 East Chestnut
Garden City, Kansas 67846
(316) 276-8263 (Finney)

GOODLAND MUNICIPAL COURT
204 West Eleventh
Goodland, Kansas 67735
(913) 899-2372 (Sherman)

GREAT BEND MUNICIPAL COURT
P. O. Box 1168
1209 Williams
Great Bend, Kansas 67530
(316) 793-7881 (Barton)

HAYS MUNICIPAL COURT
P. O. Box 490
1507 Main
Hays, Kansas 67601
(913) 625-3465 (Ellis)

HAYSVILLE MUNICIPAL COURT
P. O. Box 404
Haysville, Kansas 67060
(316) 524-3243 (Sedgwick)

HUTCHINSON MUNICIPAL COURT
210 West First
Hutchinson, Kansas 67501
(316) 665-6601 (Reno)

INDEPENDENCE MUNICIPAL COURT
120 North Sixth
Independence, Kansas 67301
(316) 331-0480 (Montgomery)

IOLA MUNICIPAL COURT
2 West Jackson
Iola, Kansas 66749
(316) 365-2412 (Allen)

JUNCTION CITY MUNICIPAL COURT
P. O. Box 287
Seventh and Jefferson
Junction City, Kansas 66441
(913) 238-4111 (Geary)

KANSAS CITY MUNICIPAL COURT
Municipal Building
One Civic Center Plaza
Kansas City, Kansas 66101
(913) 371-2000 (Wyandotte)

LARNED MUNICIPAL COURT
419 Broadway
Larned, Kansas 67550
(316) 285-2149 (Pawnee)

LAWRENCE MUNICIPAL COURT
500 Massachusetts
Lawrence, Kansas 66044
(913) 841-7700 (Douglas)

LEAVENWORTH MUNICIPAL COURT
Fifth and Shawnee
Leavenworth, Kansas 66048
(913) 682-9201 (Leavenworth)

LEAWOOD MUNICIPAL COURT
9615 Lee Boulevard
Leawood, Kansas 66206
(913) 642-5555 (Johnson)

LENEXA MUNICIPAL COURT
13425 Walnut
Lenexa, Kansas 66215
(913) 492-8800 (Johnson)

LIBERAL MUNICIPAL COURT
325 North Washington
Liberal, Kansas 67901
(316) 624-2525 (Seward)

MANHATTAN MUNICIPAL COURT
City Hall
Eleventh and Poyntz
Manhattan, Kansas 66502
(913) 537-0056 (Riley)

McPHERSON MUNICIPAL COURT
312 East Kansas
McPherson, Kansas 67460
(316) 241-1353 (McPherson)

MERRIAM MUNICIPAL COURT
9000 West 62nd Terrace
Merriam, Kansas 66202
(913) 722-0242 (Johnson)

MISSION MUNICIPAL COURT
6090 Woodson
Mission, Kansas 66202
(913) 722-0698 (Johnson)

NEWTON MUNICIPAL COURT
P. O. Box 426
120 East Seventh
Newton, Kansas 67114
(316) 283-6900 (Harvey)

OLATHE MUNICIPAL COURT
P. O. Box 768
100 West Santa Fe
Olathe, Kansas 66061
(913) 782-2600 (Johnson)

OTTAWA MUNICIPAL COURT
Fourth and Walnut
Ottawa, Kansas 66067
(913) 242-2190 (Franklin)

OVERLAND PARK MUNICIPAL COURT
8500 Antioch
Overland Park, Kansas 66212
(913) 381-5252 (Johnson)

PARSONS MUNICIPAL COURT
Municipal Building
Parsons, Kansas 67357
(316) 421-5500 (Labette)

PITTSBURG MUNICIPAL COURT
P. O. Box 688
201 West Fourth
Pittsburg, Kansas 66762
(316) 231-4100 (Crawford)

PRAIRIE VILLAGE MUNICIPAL COURT
7700 Mission Road
Prairie Village, Kansas 66028
(913) 381-6000 (Johnson)

PRATT MUNICIPAL COURT
P. O. Box 468
Third and Jackson
Pratt, Kansas 67124
(316) 672-6446 (Pratt)

ROELAND PARK MUNICIPAL COURT
4600 West 51st
Roeland Park, Kansas 66205
(913) 722-2600 (Johnson)

RUSSELL MUNICIPAL COURT
P. O. Box 112
133 West Eighth
Russell, Kansas 67665
(913) 483-3211 (Russell)

SALINA MUNICIPAL COURT
255 North Tenth
Salina, Kansas 67401
(913) 825-1401 (Saline)

SHAWNEE MUNICIPAL COURT
11110 Johnson Drive
Shawnee, Kansas 66203
(913) 631-2500 (Johnson)

TOPEKA MUNICIPAL COURT
215 East Seventh
Topeka, Kansas 66603
(913) 295-3940 (Shawnee)

WELLINGTON MUNICIPAL COURT
202 North Washington
Wellington, Kansas 67152
(316) 326-2811 (Sumner)

WICHITA MUNICIPAL COURT
455 North Main
Wichita, Kansas 67202
(316) 268-4609 (Sedgwick)

WINFIELD MUNICIPAL COURT
P. O. Box 646
200 East Ninth
Winfield, Kansas 67156
(316) 221-1585 (Cowley)

COURT SERVICES

COURT SERVICES SPECIALIST
Kansas Judicial Center, Room 337
301 West Tenth
Topeka, Kansas 66612
(913) 296-2256

COURT SERVICES OFFICERS

FIRST JUDICIAL DISTRICT
Chief Court Services Officer
Leavenworth County Courthouse
Leavenworth, Kansas 66048
(913) 682-6060

SECOND JUDICIAL DISTRICT
Chief Court Services Officer
Jackson County Courthouse
Holton, Kansas 66436
(913) 364-2191

THIRD JUDICIAL DISTRICT
Chief Court Services Officer
Suite 104
200 East Seventh
Topeka, Kansas 66603
(913) 295-4004

FOURTH JUDICIAL DISTRICT
Chief Court Services Officer
Allen County Courthouse
Iola, Kansas 66749
(316) 365-5148

FIFTH JUDICIAL DISTRICT
Chief Court Services Officer
412 Commercial
Emporia, Kansas 66801
(316) 343-7330

SIXTH JUDICIAL DISTRICT
Chief Court Services Officer
Bourbon County Courthouse
Fort Scott, Kansas 66701
(316) 223-1790

SEVENTH JUDICIAL DISTRICT
Chief Court Services Officer
Law Enforcement Center
Lawrence, Kansas 66044
(913) 841-7700

EIGHTH JUDICIAL DISTRICT
Chief Court Services Officer
Geary County Courthouse
Junction City, Kansas 66441
(913) 762-2302

NINTH JUDICIAL DISTRICT
Chief Court Services Officer
Harvey County Courthouse
Newton, Kansas 67114
(316) 283-7232

TENTH JUDICIAL DISTRICT
Johnson County Courthouse
Olathe, Kansas 66061
(913) 782-5000

ELEVENTH JUDICIAL DISTRICT
Chief Court Services Officer
Judicial Center
Fourth and Pine
Pittsburg, Kansas 66762
(316) 232-2460

TWELFTH JUDICIAL DISTRICT
Chief Court Services Officer
Box 582
Concordia, Kansas 66901
(913) 243-7040

THIRTEENTH JUDICIAL DISTRICT
Chief Court Services Officer
Greenwood County Courthouse
Eureka, Kansas 67045
(316) 583-7520

FOURTEENTH JUDICIAL DISTRICT
Chief Court Services Officer
Montgomery County Courthouse
Independence, Kansas 67301
(316) 331-1060

FIFTEENTH JUDICIAL DISTRICT
Chief Court Services Officer
Thomas County Courthouse
Colby, Kansas 67701
(913) 462-7613

SIXTEENTH JUDICIAL DISTRICT
Chief Court Services Officer
Ford County Courthouse
Dodge City, Kansas 67801
(316) 225-0940

SEVENTEENTH JUDICIAL DISTRICT
Chief Court Services Officer
Norton County Courthouse
Norton, Kansas 67654
(913) 877-5533

EIGHTEENTH JUDICIAL DISTRICT
Chief Court Services Officer
Sedgwick County Courthouse
Wichita, Kansas 67203
(316) 268-7302

NINETEENTH JUDICIAL DISTRICT
Chief Court Services Officer
Cowley County Courthouse
Winfield, Kansas 67156
(316) 221-4066

TWENTIETH JUDICIAL DISTRICT
Chief Court Services Officer
Barton County Courthouse
Great Bend, Kansas 65730
(316) 792-3202

TWENTY-FIRST JUDICIAL DISTRICT
Chief Court Services Officer
121 A South Fourth, Room 201
Manhattan, Kansas 66502
(913) 539-3822

TWENTY-SECOND JUDICIAL DISTRICT
Chief Court Services Officer
Brown County Courthouse
Hiawatha, Kansas 66434
(913) 742-7302

TWENTY-THIRD JUDICIAL DISTRICT
Chief Court Services Officer
Box 8
Hays, Kansas 67550
(913) 628-6654

TWENTY-FOURTH JUDICIAL DISTRICT
Chief Court Services Officer
Ness County Courthouse
Ness City, Kansas 67560
(913) 798-3128

TWENTY-FIFTH & TWENTY-SIXTH
JUDICIAL DISTRICTS
Chief Court Services Officer
504 St. John
Garden City, Kansas 67846
(316) 276-2343

TWENTY-SEVENTH JUDICIAL DISTRICT
Chief Court Services Officer
Reno County Courthouse
Hutchinson, Kansas 67501
(316) 662-4411

TWENTY-EIGHTH JUDICIAL DISTRICT
Saline County Courthouse
Salina, Kansas 67401
(913) 825-7241

TWENTY-NINTH JUDICIAL DISTRICT
Wyandotte County Courthouse
Kansas City, Kansas 66101
(913) 573-2846

PROSECUTORIAL

ATTORNEY GENERAL, OFFICE OF THE
Main Office, Second Floor
Kansas Judicial Center
301 West Tenth Street
Topeka, Kansas 66612
(913) 296-2215

COUNTY ATTORNEYS

ALLEN COUNTY ATTORNEY
County Courthouse
Iola, Kansas 66479
(316) 365-5272

ANDERSON COUNTY ATTORNEY
Box 348
Garnett, Kansas 66032
(913) 448-6131

ATCHISON COUNTY ATTORNEY
County Courthouse
Atchison, Kansas 66002
(913) 367-2429

BARBER COUNTY ATTORNEY
Box 248
Medicine Lodge, Kansas 67104
(316) 886-5646

BARTON COUNTY ATTORNEY
Box 881
Great Bend, Kansas 67530
(316) 793-3559

BOURBON COUNTY ATTORNEY
County Courthouse
Ft. Scott, Kansas 66701
(316) 223-2910

BROWN COUNTY ATTORNEY
Box 240
Hiawatha, Kansas 66434
(913) 742-2181

BUTLER COUNTY ATTORNEY
Judicial Building
El Dorado, Kansas 67042
(316) 321-1210

CHASE COUNTY ATTORNEY
Box 280
Cottonwood Falls, Kansas 66845
(316) 273-6301

CHAUTAUQUA COUNTY ATTORNEY
Box 417
215 North Chautauqua
Sedan, Kansas 67361
(316) 725-3129

CHEROKEE COUNTY ATTORNEY
County Courthouse
Columbus, Kansas 66725
(316) 429-3836

CHEYENNE COUNTY ATTORNEY
101 West Washington
Box 627
St. Francis, Kansas 67756
(913) 332-2101

CLARK COUNTY ATTORNEY
Box 128
114 West Eighth
Ashland, Kansas 67831
(316) 635-2297

CLAY COUNTY ATTORNEY
705 Fifth Street
Clay Center, Kansas 67432
(913) 632-3226

CLOUD COUNTY ATTORNEY
Box 497
Concordia, Kansas 66901
(913) 243-3575

COFFEY COUNTY ATTORNEY
County Courthouse
Burlington, Kansas 66839
(316) 364-2655

COMANCHE COUNTY ATTORNEY
215 East Main
Coldwater, Kansas 67209
(316) 582-2115

COWLEY COUNTY ATTORNEY
Cowley County Courthouse
Winfield, Kansas 67156
(316) 221-4066

CRAWFORD COUNTY ATTORNEY
Judicial Center
Fourth & Pine
Pittsburg, Kansas 66742
(316) 231-1030

DECATUR COUNTY ATTORNEY
Box 50
Oberlin, Kansas 67749
(913) 475-2511

DICKINSON COUNTY ATTORNEY
325 North Broadway
Abilene, Kansas 67410
(913) 263-2646

DONIPHAN COUNTY ATTORNEY
Box 486
Troy, Kansas 66087
(913) 985-2313

DOUGLAS COUNTY DISTRICT ATTORNEY
County Courthouse
111 East Eleventh
Lawrence, Kansas 66044
(913) 841-7700

EDWARDS COUNTY ATTORNEY
Box 228
Kinsley, Kansas 67547
(316) 659-2171

ELK COUNTY ATTORNEY
Box 307
Moline, Kansas 67353
(316) 647-3292

ELLIS COUNTY ATTORNEY
Box 725
Hays, Kansas 67601
(913) 625-9312

ELLSWORTH COUNTY ATTORNEY
221 North Douglas
Ellsworth, Kansas 67439
(913) 472-3558

FINNEY COUNTY ATTORNEY
118 West Pine Street
Garden City, Kansas 67846
(316) 275-9614

FORD COUNTY ATTORNEY
Box 995
Dodge City, Kansas 67801
(316) 227-8561

FRANKLIN COUNTY ATTORNEY
Court Building
Ottawa, Kansas 66067
(913) 242-2927

GEARY COUNTY ATTORNEY
County Courthouse
Junction City, Kansas 66441
(913) 762-4343

GOVE COUNTY ATTORNEY
Box 275
Quinter, Kansas 67736
(913) 754-2342

GRAHAM COUNTY ATTORNEY
413 North Pomeroy
Hill City, Kansas 67642
(913) 674-5424

GRANT COUNTY ATTORNEY
Box 543
Ulysses, Kansas 67880
(316) 356-4303

GRAY COUNTY ATTORNEY
Box 466
Cimarron, Kansas 67835
(316) 855-3414

GREELEY COUNTY ATTORNEY
511 Second Street
Tribune, Kansas 67879
(316) 376-4232

GREENWOOD COUNTY ATTORNEY
County Courthouse
Eureka, Kansas 67045
(316) 583-6171

HAMILTON COUNTY ATTORNEY
301 North Main
Syracuse, Kansas 67878
(316) 384-5320

HARPER COUNTY ATTORNEY
Box 147
Anthony, Kansas 67003
(316) 842-5108

HARVEY COUNTY ATTORNEY
County Courthouse
Newton, Kansas 67114
(316) 283-7232

HASKELL COUNTY ATTORNEY
P. O. Box 299
Satanta, Kansas 67870
(316) 675-2617

HODGEMAN COUNTY ATTORNEY
Box 197
Jetmore, Kansas 67854
(316) 357-6411

JACKSON COUNTY ATTORNEY
County Courthouse
Holton, Kansas 66436
(913) 364-3103

JEFFERSON COUNTY ATTORNEY
Box 351
Oskaloosa, Kansas 66066
(913) 863-2251

JEWELL COUNTY ATTORNEY
County Courthouse
Mankato, Kansas 66956
(913) 378-3255

JOHNSON COUNTY DISTRICT ATTORNEY
Box 728
Olathe, Kansas 66061
(913) 782-5000

KEARNY COUNTY ATTORNEY
Box 984
Lakin, Kansas 67860
(316) 355-6398

KINGMAN COUNTY ATTORNEY
103 Avenue A East
Kingman, Kansas 67068
(316) 532-3108

KIOWA COUNTY ATTORNEY
226 South Main
Greensburg, Kansas 67054
(316) 723-2721

LABETTE COUNTY ATTORNEY
Box 991
Parsons, Kansas 67357
(316) 421-2720

LANE COUNTY ATTORNEY
Box 967
Dighton, Kansas 67389
(316) 397-2450

LEAVENWORTH COUNTY ATTORNEY
County Courthouse
Leavenworth, Kansas 66048
(913) 524-4380

LINCOLN COUNTY ATTORNEY
116 South Fourth
Lincoln, Kansas 67455
(913) 524-4380

LINN COUNTY ATTORNEY
Box 159
501 Main
Mound City, Kansas 66056
(913) 795-2239

LOGAN COUNTY ATTORNEY
Box 326
Oakley, Kansas 67748
(913) 672-4494

LYON COUNTY ATTORNEY
County Courthouse
Emporia, Kansas 66801
(316) 342-2566

MARION COUNTY ATTORNEY
Box 126
County Courthouse
Marion, Kansas 66861
(316) 382-2243

MARSHALL COUNTY ATTORNEY
Box 207
Marysville, Kansas 66508
(913) 562-3782

MEADE COUNTY ATTORNEY
127 North Fowler
Meade, Kansas 67864
(316) 873-2741

MCPHERSON COUNTY ATTORNEY
Box 1103
McPherson, Kansas 67460
(316) 241-1027

MIAMI COUNTY ATTORNEY
Box 245
Paola, Kansas 66071
(913) 294-3181

MITCHELL COUNTY ATTORNEY
Box 604
119 South Mill Street
Beloit, Kansas 67420
(913) 738-3928

MONTGOMERY COUNTY ATTORNEY
County Courthouse
Independence, Kansas 67301
(316) 331-5540

MORRIS COUNTY ATTORNEY
Box 224
Council Grove, Kansas 66846
(316) 767-5688

MORTON COUNTY ATTORNEY
P. O. Drawer 0
Elkhart, Kansas 67950
(316) 697-2163

NEMAH COUNTY ATTORNEY
607 Nemaha Street
Sabetha, Kansas 66538
(913) 284-3426

NEOSHO COUNTY ATTORNEY
123 West Main
Chanute, Kansas 66720
(316) 431-6230

NESS COUNTY ATTORNEY
Box 66
Ness City, Kansas 67560
(913) 798-2830

NORTON COUNTY ATTORNEY
Box 462
Norton, Kansas 67654
(913) 927-3613

OSAGE COUNTY ATTORNEY
Box 258
Courthouse
Osage City, Kansas 66523
(913) 828-4931

OSBORNE COUNTY ATTORNEY
202 West Main
Courthouse
Osborne, Kansas 67473
(913) 346-5443

OTTAWA COUNTY ATTORNEY
206 North Concord
Minneapolis, Kansas 67467
(913) 392-2133

PAWNEE COUNTY ATTORNEY
Box 360
118 East Eighth
Larned, Kansas 67550
(316) 285-3157

PHILLIPS COUNTY ATTORNEY
Box 571
Phillipsburg, Kansas 67661
(913) 543-2914

POTTAWATOMIE COUNTY ATTORNEY
County Courthouse
Westmoreland, Kansas 66549
(913) 457-3511

PRATT COUNTY ATTORNEY
Box 373
126 East Third
Pratt, Kansas 67124
(316) 672-7271

RAWLINS COUNTY ATTORNEY
Box 449
509 Main
Atwood, Kansas 67730
(913) 626-3221

RENO COUNTY ATTORNEY
206 West First Street
Hutchinson, Kansas 67501
(316) 665-6601

REPUBLIC COUNTY ATTORNEY
1836 M Street, Box 466
Belleville, Kansas 66935
(913) 527-2263

RICE COUNTY ATTORNEY
Box 666
Lyons, Kansas 67554
(316) 257-3081

RILEY COUNTY ATTORNEY
County Courthouse
Manhattan, Kansas 66502
(913) 776-4829

ROOKS COUNTY ATTORNEY
Box 282
Stockton, Kansas 67669
(913) 425-6371

RUSH COUNTY ATTORNEY
County Courthouse, Box 747
LaCross, Kansas 67548
(913) 222-2507

RUSSELL COUNTY ATTORNEY
County Courthouse
Russell, Kansas 67665
(913) 483-3119

SALINE COUNTY ATTORNEY
300 West Ash
Salina, Kansas 67401
(913) 825-8143

SCOTT COUNTY ATTORNEY
Box 605
Scott City, Kansas 67871
(316) 872-2161

SEDGWICK COUNTY DISTRICT ATTORNEY
535 North Main
County Courthouse
Wichita, Kansas 67203
(316) 268-7536

SEWARD COUNTY ATTORNEY
Box 442
Liberal, Kansas 67901
(316) 624-1697

SHAWNEE COUNTY DISTRICT ATTORNEY
207 East Seventh
County Courthouse
Topeka, Kansas 66603
(913) 295-4330

SHERIDAN COUNTY ATTORNEY
County Courthouse
Hoxie, Kansas 67740
(913) 675-3771

SHERMAN COUNTY ATTORNEY
Box 149
Goodland, Kansas 67735
(913) 899-6130

SMITH COUNTY ATTORNEY
County Courthouse
Smith Center, Kansas 66967
(913) 282-6689

STAFFORD COUNTY ATTORNEY
County Courthouse
St. John, Kansas 67576
(316) 549-3501

STANTON COUNTY ATTORNEY
Box 310
Johnson, Kansas 67855
(316) 492-6800

STEVENS COUNTY ATTORNEY
Box 39
Hugoton, Kansas 67951
(316) 544-4684

SUMNER COUNTY ATTORNEY
Sumner County Courthouse
Wellington, Kansas 67152
(316) 326-7941

THOMAS COUNTY ATTORNEY
Box 408
Colby, Kansas 67701
(913) 462-6321

TREGO COUNTY ATTORNEY
Box 275
WaKeeney, Kansas 67672
(913) 743-5511

WABAUNSEE COUNTY ATTORNEY
Box 296
Alma, Kansas 66401
(913) 765-3932

WALLACE COUNTY ATTORNEY
Box P
313 North Main
Sharon Springs, Kansas 67758
(913) 852-4750

WASHINGTON COUNTY ATTORNEY
115 East Third
Washington, Kansas 66986
(913) 325-2149

WICHITA COUNTY ATTORNEY
Box 847
19 North Fourth
Leoti, Kansas 67861
(316) 375-2238

WILSON COUNTY ATTORNEY
Box 478
Fredonia, Kansas 66736
(316) 378-4115

WOODSON COUNTY ATTORNEY
County Courthouse
Yates Center, Kansas 66783
(316) 625-2137

WYANDOTTE COUNTY DISTRICT ATTORNEY
County Courthouse
Kansas City, Kansas 66101
(913) 573-2851

CITY ATTORNEYS

(Cities with populations of more
than 5,000)

ARKANSAS CITY
City Attorney
City Hall
First and Central
Arkansas City, Kansas 67005
(316) 442-6010 (Cowley)

ATCHISON
City Attorney
515 Kansas Avenue
Atchison, Kansas 66002
(913) 367-5081 (Atchison)

AUGUSTA
City Attorney
Sixth and School
Augusta, Kansas 67010
(316) 775-6301 (Butler)

BAXTER SPRINGS
City Attorney
P. O. Box 577
Eleventh and Park
Baxter Springs, Kansas 66713
(316) 856-2114 (Cherokee)

BONNER SPRINGS
City Attorney
205 East Second
Bonner Springs, Kansas 66012
(913) 422-1020 (Wyandotte)

CHANUTE
City Attorney
Second and Lincoln
Chanute, Kansas 66720
(316) 431-9300 (Neosho)

CLAY CENTER
City Attorney
P. O. Box 117
427 Court
Clay Center, Kansas 67432
(913) 632-5454 (Clay)

COFFEYVILLE
City Attorney
Seventh and Walnut
Coffeyville, Kansas 67337
(316) 251-7000 (Montgomery)

COLBY
City Attorney
585 North Franklin
Colby, Kansas 67701
(913) 462-3973 (Thomas)

CONCORDIA
City Attorney
Sixth and Lincoln
Concordia, Kansas 66901
(913) 243-2670 (Cloud)

DERBY
City Attorney
229 North Baltimore
Derby, Kansas 67037
(316) 788-1519 (Sedgwick)

DODGE CITY
City Attorney
705 First Avenue
Dodge City, Kansas 67801
(316) 225-1391 (Ford)

EL DORADO
City Attorney
P. O. Box 792
City Hall
El Dorado, Kansas 67042
(316) 321-9100 (Butler)

EMPORIA
City Attorney
522 Mechanic
Emporia, Kansas 66801
(316) 342-5105 (Lyon)

FAIRWAY
City Attorney
5252 Belinder Road
Fairway, Kansas 66205
(913) 262-0350 (Johnson)

FORT SCOTT
City Attorney
One East Third
Fort Scott, Kansas 66701
(316) 223-0550 (Bourbon)

GARDEN CITY
City Attorney
P. O. Box 499
116 East Chestnut
Garden City, Kansas 67846
(316) 276-8263 (Finney)

GOODLAND
City Attorney
204 West Eleventh
Goodland, Kansas 67735
(913) 899-2372 (Sherman)

GREAT BEND
City Attorney
P. O. Box 1168
1209 Williams
Great Bend, Kansas 67530
(316) 793-7881 (Barton)

HAYS
City Attorney
P. O. Box 490
1507 Main
Hays, Kansas 67601
(913) 625-3465 (Ellis)

HAYSVILLE
City Attorney
P. O. Box 404
City Hall
Haysville, Kansas 67060
(316) 524-3243 (Sedgwick)

HUTCHINSON
City Attorney
P. O. Box 1567
125 East Avenue B
Hutchinson, Kansas 67501
(316) 663-6151 (Reno)

INDEPENDENCE
City Attorney
120 North Sixth
Independence, Kansas 67301
(316) 331-2500 (Montgomery)

IOLA
City Attorney
2 West Jackson
Iola, Kansas 66749
(316) 365-2412 (Allen)

JUNCTION CITY
City Attorney
P. O. Box 287
Seventh & Jefferson
Junction City, Kansas 66441
(913) 238-2975 (Geary)

KANSAS CITY
City Attorney
Municipal Building
One Civic Center Plaza
Kansas City, Kansas 66101
(913) 371-2000 (Wyandotte)

LARNED
City Attorney
419 Broadway
Larned, Kansas 67550
(316) 285-2149 (Pawnee)

LAWRENCE
City Attorney
500 Massachusetts
Lawrence, Kansas 66044
(913) 841-7700 (Douglas)

LEAVENWORTH
City Attorney
Fifth and Shawnee
Leavenworth, Kansas 66048
(913) 682-9201 (Leavenworth)

LEAWOOD
City Attorney
9615 Lee Boulevard
Leawood, Kansas 66206
(913) 642-5555 (Johnson)

LENEXA
City Attorney
13425 Walnut
Lenexa, Kansas 66215
(913) 492-8800 (Johnson)

LIBERAL
City Attorney
325 North Washington
Liberal, Kansas 67901
(316) 624-0101 (Seward)

MANHATTAN
City Attorney
121-A South Fourth
Manhattan, Kansas 66502
(913) 537-2992 (Riley)

McPHERSON
City Attorney
P. O. Box 1008
400 East Kansas Avenue
McPherson, Kansas 67460
(316) 241-6300 (McPherson)

MERRIAM
City Attorney
9000 West 62nd Terrace
Merriam, Kansas 66202
(913) 722-3330 (Johnson)

MISSION
City Attorney
6090 Woodson
Mission, Kansas 66202
(913) 722-3685 (Johnson)

NEWTON
City Attorney
P. O. Box 426
120 East Seventh
Newton, Kansas 67114
(316) 283-6900 (Harvey)

OLATHE
City Attorney
P. O. Box 768
100 West Santa Fe
Olathe, Kansas 66061
(913) 782-2600 (Johnson)

OTTAWA
City Attorney
Fourth and Walnut
Ottawa, Kansas 66067
(913) 242-2190 (Franklin)

OVERLAND PARK
City Attorney
8500 Santa Fe Drive
Overland Park, Kansas 66212
(913) 381-5252 (Johnson)

PARSONS
City Attorney
Municipal Building
Parsons, Kansas 67357
(316) 421-5500 (Labette)

PITTSBURG
City Attorney
P. O. Box 688
201 West Fourth
City Hall
Pittsburg, Kansas 66762
(316) 231-4100 (Crawford)

PRAIRIE VILLAGE
City Attorney
7700 Mission Road
Prairie Village, Kansas 66208
(913) 381-6464 (Johnson)

PRATT
City Attorney
P. O. Box 468
Third & Jackson
Pratt, Kansas 67124
(316) 672-6446 (Pratt)

ROELAND PARK
City Attorney
4600 West 51st
Roeland Park, Kansas 66205
(913) 722-2600 (Johnson)

RUSSELL
City Attorney
P. O. Box 112
133 West Eighth
Russell, Kansas 67665
(913) 483-3211 (Russell)

SALINA
City Attorney
P. O. Box 746
300 West Ash
Salina, Kansas 67401
(913) 827-9653 (Saline)

SHAWNEE
City Attorney
11110 Johnson Drive
Shawnee, Kansas 66203
(913) 631-2500 (Johnson)

TOPEKA
City Attorney
215 East Seventh
Topeka, Kansas 66603
(913) 295-3940 (Shawnee)

WELLINGTON
City Attorney
202 North Washington
Wellington, Kansas 67152
(316) 326-2811 (Sumner)

WICHITA
City Attorney
455 North Main
Wichita, Kansas 67202
(316) 268-4569 (Sedgwick)

WINFIELD
City Attorney
P. O. Box 646
200 East Ninth
Winfield, Kansas 67156
(316) 221-4010 (Cowley)

SUMNER LEGAL INTERN PROSECUTOR
PROGRAM
Kansas County and District Attorney's
Association
120 East Sixth
Topeka, Kansas 66603
(913) 357-6351

DIVERSION PROGRAM
Sedgwick County District Attorney
525 North Main
Wichita, Kansas 67203
(316) 268-7258

DEFENDER OFFICES

PUBLIC DEFENDER OFFICES

SUPREME COURT, AID TO INDIGENT
CRIMINAL DEFENDANTS
Judicial Administrator
Kansas Judicial Center
301 West Tenth Street
Topeka, Kansas 66612
(913) 296-2256

THIRD JUDICIAL DISTRICT
Public Defender
Room 200
424 Kansas
Topeka, Kansas 66603
(913) 234-0473

EIGHTH JUDICIAL DISTRICT
Public Defender
116 1/2 West Eighth
Junction City, Kansas 66644
(913) 238-2154

TWENTY-EIGHTH JUDICIAL DISTRICT
Public Defender
Room 201
211 West Iron
Salina, Kansas 67401
(913) 827-2391

OTHER DEFENDER OFFICES

AMERICAN CIVIL LIBERTIES UNION
419 Denison
Manhattan, Kansas 66502
(913) 776-0548

COMMISSION ON CIVIL RIGHTS
535 Kansas Avenue, Fifth Floor
Topeka, Kansas 66603
(913) 296-3206

KANSAS DEFENDER PROJECT
409 Green
University of Kansas
Lawrence, Kansas 66045
(913) 864-4194 LEGAL

LEGAL SERVICES FOR PRISONERS, INC.
5600 West Sixth
Topeka, Kansas 66604
(913) 272-4522

LEGAL SERVICES FOR PRISONERS,
INC.
500 Reformatory
Hutchinson, Kansas 67501
(316) 663-3032

PUBLIC DEFENDER COMMITTEE
Kansas Bar Association
1334 Topeka
Topeka, Kansas 66603
(913) 234-5696

WAHSBURN UNIVERSITY LEGAL CLINIC
1700 College
Topeka, Kansas 66604
(913) 295-6691

LEGAL ASSOCIATIONS AND ORGANIZATIONS

CITY ATTORNEY ASSOCIATION OF KANSAS
c/o League of Kansas Municipalities
112 West Seventh
Topeka, Kansas 66603
(913) 354-9565

CONFERENCE OF STATE COURT
ADMINISTRATORS
c/o Governor's Committee on
Criminal Administration
Second Floor
503 Kansas
Topeka, Kansas 66603
(913) 296-3066

KANSAS BAR ASSOCIATION
1334 Topeka
Topeka, Kansas 66601
(913) 234-5696

KANSAS COUNTY AND DISTRICT
ATTORNEYS ASSOCIATION
Townsite Office Plaza #3
Suite 240
120 East Sixth
Topeka, Kansas 66603
(913) 357-6351

KANSAS DISTRICT CLERKS ASSOCIATION
Sheridan County District Clerk
P. O. Box 753
Hoxie, Kansas 67740
(913) 675-3451

KANSAS DISTRICT JUDGES ASSOCIATION
P. O. Box 150
Eureka, Kansas 67045
(316) 583-7141

KANSAS MUNICIPAL JUDGES ASSOCIATION
Room 137
4121 West 83rd
Prairie Village, Kansas 66208
(913) 381-1515

KANSAS PROBATION OFFICERS ASSOCIATION
1001 South Minnesota
Wichita, Kansas 67211
(316) 268-7245

KANSAS TRIAL LAWYERS ASSOCIATION
112 S. W. Sixth, Suite 300
Topeka, Kansas 66603
(913) 232-7756

Kansas Counties by Judicial District
(1/10/78)

DISTRICT 1

Atchison
Leavenworth

DISTRICT 2

Pottawatomie
Jackson
Jefferson
Wabaunsee

DISTRICT 3

Shawnee

DISTRICT 4

Osage
Franklin
Coffey
Anderson
Woodson
Allen

DISTRICT 5

Chase
Lyon

DISTRICT 6

Miami
Linn
Bourbon

DISTRICT 7

Douglas

DISTRICT 8

Dickinson
Geary
Morris
Marion

DISTRICT 9

McPherson
Harvey

DISTRICT 10

Johnson

DISTRICT 11

Wilson
Neosho
Crawford
Labette
Cherokee

DISTRICT 12

Jewell
Mitchell
Lincoln
Republic
Cloud
Washington

DISTRICT 13

Butler
Greenwood
Elk
Chautauqua

DISTRICT 14

Montgomery

DISTRICT 15

Sherman
Thomas
Sheridan
Graham
Rooks

DISTRICT 16

Gray
Ford
Kiowa
Meade
Clark
Comanche

DISTRICT 17

Cheyenne
Rawlins
Decatur
Norton
Phillips
Smith
Osborne

DISTRICT 18

Sedgwick

DISTRICT 19

Pratt
Barber
Kingman
Harper
Sumner
Cowley

DISTRICT 20

Russell
Barton
Stafford
Ellsworth
Rice

DISTRICT 21

Clay
Riley

DISTRICT 22

Marshall
Nemaha
Brown
Doniphan

DISTRICT 23

Wallace
Logan
Gove
Trego
Ellis

DISTRICT 24

Lane
Ness
Hodgeman
Rush
Pawnee
Edwards

DISTRICT 25

Greeley
Wichita
Scott
Hamilton
Kearny
Finney

DISTRICT 26

Stanton
Morton
Grant
Stevens
Haskell
Seward

DISTRICT 27

Reno

DISTRICT 28

Ottawa
Saline

DISTRICT 29

Wyandotte

[illegible]

CHAPTER IV
CORRECTIONS

STATE AGENCIES

CORRECTIONS, DEPARTMENT OF
535 Kansas Avenue, Suite 200
Topeka, Kansas 66603
(913) 296-3317

DEPUTY SECRETARY OF INSTITUTIONS
535 Kansas Avenue
Topeka, Kansas 66603
(913) 296-4500

DEPUTY SECRETARY OF COMMUNITY
CORRECTIONAL SERVICES
535 Kansas Avenue
Topeka, Kansas 66603
(913) 296-4520

CHIEF JAIL INSPECTOR
535 Kansas Avenue
Topeka, Kansas 66603
(913) 296-4520

REGIONAL JAIL INSPECTORS

JAIL INSPECTOR
16th & Polk Streets
Great Bend, Kansas 67530
(316) 793-9563

JAIL INSPECTOR
904 West Sixth
Ottawa, Kansas 66067
(913) 242-5436

ADULT CORRECTIONAL INSTITUTIONS

KANSAS CORRECTIONAL INSTITUTE
FOR WOMEN
Box 160
Highway 5
Lansing, Kansas 66043
(913) 727-3553

KANSAS CORRECTIONAL-VOCATIONAL
TRAINING CENTER
P. O. Box 1536
800 Rice Road
Topeka, Kansas 66607
(913) 296-7220

KANSAS STATE INDUSTRIAL
REFORMATORY
500 South Reformatory
Hutchinson, Kansas 67501
(913) 662-2321

KANSAS STATE PENITENTIARY
P. O. Box 2
Highway 73 & Kansas Avenue
Lansing, Kansas 66043
(913) 727-3235

KANSAS STATE RECEPTION and
DIAGNOSTIC CENTER
P. O. Box 1558
3401 East Sixth
Topeka, Kansas 66607
(913) 296-7211

TORONTO HONOR CAMP
Toronto, Kansas 66777
(316) 637-2267

OFFICE OF THE OMBUDSMAN FOR CORRECTIONS
Suite 539
503 Kansas Avenue
Topeka, Kansas 66603
(913) 296-5295

PROBATION and PAROLE ADMINISTRATOR
535 Kansas Avenue
Topeka, Kansas 66603
(913) 296-4520

PROBATION and PAROLE OFFICES

DODGE CITY PAROLE OFFICE
207 Gunsmoke
Dodge City, Kansas 67801
(316) 225-0422

EMPORIA PAROLE OFFICE
519 Commercial
Emporia, Kansas 66801
(316) 342-5006

GREAT BEND PAROLE OFFICE
16th & Polk Streets
Great Bend, Kansas 67530
(316) 793-9563

HUTCHINSON PAROLE OFFICE
217 East First
Hutchinson, Kansas 67501
(316) 669-0175

INDEPENDENCE PAROLE OFFICE
110 West Main
Independence, Kansas 67301
(316) 331-4854

KANSAS CITY PAROLE OFFICE
Fourth & State
Kansas City, Kansas 66101
(913) 621-1830

MANHATTAN PAROLE OFFICE
Courthouse
Manhattan, Kansas 66502
(913) 776-4829

OLATHE PAROLE OFFICE
106 East Park
Olathe, Kansas 66061
(913) 782-3066

PITTSBURG PAROLE OFFICE
708 North Locust
Pittsburg, Kansas 66762
(316) 232-9550

SALINA PAROLE OFFICE
677 South Ohio
Salina, Kansas 67401
(913) 827-2584

TOPEKA PAROLE OFFICE
4125 Gage Center Drive
Topeka, Kansas 66614
(913) 296-3195

TORONTO HONOR CAMP PAROLE OFFICE
Toronto, Kansas 66777
(316) 637-2267

WICHITA PAROLE OFFICE
1813 North Broadway
Wichita, Kansas 67214
(316) 262-5127

WINFIELD PAROLE OFFICE
Courthouse
Winfield, Kansas 67156
(316) 221-9589

WORK RELEASE ADMINISTRATOR
535 Kansas Avenue
Topeka, Kansas 66603
(913) 296-3998

WORK RELEASE PROGRAMS AND CENTERS

FORT SCOTT WORK RELEASE CENTER
Southeastern Kansas Regional
Correctional Center
204 South National
Fort Scott, Kansas 66701
(316) 223-2380

KANSAS STATE INDUSTRIAL REFORMATORY
WORK RELEASE
P. O. Box 1568
Hutchinson, Kansas 67501
(316) 662-2321

TOPEKA HALFWAY HOUSE (FEMALE)
1125 Western
Topeka, Kansas 66601
(913) 354-8487

TOPEKA HALFWAY HOUSE (MALE)
807 Western, P. O. Box 955
Topeka, Kansas 66601
(913) 357-4211

TOPEKA WORK RELEASE CENTER
Eighth and Rice Road
Topeka, Kansas 66607
(913) 296-7202

WICHITA WORK RELEASE CENTER
320 North Market
Wichita, Kansas 67201
(316) 262-8461

KANSAS ADULT AUTHORITY
Room 418
535 Kansas Avenue
Topeka, Kansas 66608
(913) 296-3469

COUNTY JAILS

ALLEN COUNTY JAIL
P. O. Box 433
Courthouse
Iola, Kansas 66749
(316) 365-2117

ATCHISON COUNTY JAIL
518 Parallel
Atchison, Kansas 66002
(913) 367-3392

BARBER COUNTY JAIL
Kansas & Walnut
Medicine Lodge, Kansas 67104
(316) 886-5678

BARTON COUNTY JAIL
Box 87
1408 Kansas
Great Bend, Kansas 67530
(316) 793-7896

BOURBON COUNTY JAIL
Southeastern Kansas Regional
Correctional Center
204 South National
Fort Scott, Kansas 66701
(316) 223-2380

BROWN COUNTY JAIL
706 Utah
Hiawatha, Kansas 66434
(913) 742-2897

BUTLER COUNTY JAIL
121 South Gordy
El Dorado, Kansas 67402
(316) 321-1650

CHAUTAUQUA COUNTY JAIL
215 North Chautauqua
Sedan, Kansas 67361
(316) 725-3588

CHEROKEE COUNTY JAIL
Courthouse
Columbus, Kansas 66725
(316) 429-3992

CHEYENNE COUNTY JAIL
Box 623
212 East Washington
St. Francis, Kansas 67756
(913) 332-2501

CLARK COUNTY JAIL
P. O. Box 566
Ashland, Kansas 67831
(316) 635-2802

CLAY COUNTY JAIL
P. O. Box 115
Clay Center, Kansas 67432
(913) 632-5601

CLOUD COUNTY JAIL
Box 402
Concordia, Kansas 66901
(913) 243-3636

COWLEY COUNTY JAIL
P. O. Box 47
Winfield, Kansas 67156
(316) 221-4066

CRAWFORD COUNTY JAIL
229 South Ozark
Girard, Kansas 66743
(316) 724-8274

DECATUR COUNTY JAIL
P. O. Box 106
114 South Pennsylvania
Oberlin, Kansas 67749
(913) 475-2422

DICKINSON COUNTY JAIL
109 East First
Abilene, Kansas 67410
(913) 263-4041

DONIPHAN COUNTY JAIL
P. O. Box 32
Troy, Kansas 66087
(913) 985-2584

DOUGLAS COUNTY LAW ENFORCEMENT CENTER
111 East Eleventh Street
Lawrence, Kansas 66044
(913) 841-7210

EDWARDS COUNTY JAIL
P. O. Box 371
Edwards County Courthouse
Kinsley, Kansas 67547
(316) 659-3636

ELK COUNTY JAIL
Box 127
Howard, Kansas 67349
(316) 374-2206

ELLIS COUNTY JAIL
Box 369
Hays, Kansas 67601
(913) 628-8229

ELLSWORTH COUNTY JAIL
Ellsworth County Courthouse
Ellsworth, Kansas 67439
(913) 472-3961

FINNEY COUNTY JAIL
Finney County Courthouse
Garden City, Kansas 67846
(316) 276-3226

FORD COUNTY JAIL
P. O. Box 747
Avenue A to Military
Dodge City, Kansas 67801
(316) 222-8164

FRANKLIN COUNTY JAIL
305 South Main Street
Ottawa, Kansas 66067
(913) 242-3800

GEARY COUNTY JAIL
826 North Franklin
Junction City, Kansas 66441
(913) 762-2323

GRAHAM COUNTY JAIL
410 North Pomeroy
Graham County Courthouse
Hill City, Kansas 67642
(913) 674-2108

GRANT COUNTY JAIL
210 East Central
Ulysses, Kansas 67880
(316) 356-3500

GREENWOOD COUNTY JAIL
Courthouse
Eureka, Kansas 67045
(316) 583-5568

HARPER COUNTY JAIL
115 Steadmin
Anthony, Kansas 67003
(316) 842-5135

HARVEY COUNTY JAIL
P. O. Box 231
Newton, Kansas 67114
(316) 283-5622

HODGEMAN COUNTY JAIL
Hodgeman County Courthouse
Jetmore, Kansas 67854
(316) 357-8391

JACKSON COUNTY JAIL
Jackson County Courthouse
P. O. Box 47
Holton, Kansas 66436
(913) 364-2251

JEFFERSON COUNTY JAIL
Box 322
Oskaloosa, Kansas 66066
(913) 863-2351

JOHNSON COUNTY JAIL
Courthouse
Olathe, Kansas 66061
(913) 782-5000

KANSAS CITY KANSAS JAIL
No. 1 Civic Center Plaza
107 North Seventh
Kansas City, Kansas 66101
(913) 371-2000

KEARNY COUNTY JAIL
P. O. Box P
Lakin, Kansas 67860
(316) 355-6211

KIOWA COUNTY JAIL
200 East Wisconsin
Greensburg, Kansas 67054
(316) 723-2182

LABETTE COUNTY JAIL
Courthouse
Oswego, Kansas 67356
(316) 795-2565

LANE COUNTY JAIL
P. O. Box 27
Dighton, Kansas 67839
(316) 397-2452

LEAVENWORTH COUNTY JAIL
503 South Third Street
Leavenworth, Kansas 66048
(913) 682-5724

LINCOLN COUNTY JAIL
116 North Second
Lincoln, Kansas 67455

LINN COUNTY JAIL
Linn County Courthouse
Mound City, Kansas 66056
(913) 795-2666

LYON COUNTY JAIL
425 Mechanic Street
Emporia, Kansas 66801
(316) 342-5545

MARSHALL COUNTY JAIL
Law Enforcement Center
Marysville, Kansas 66508
(913) 562-3141

MEADE COUNTY JAIL
P. O. Box 426
Meade, Kansas 67864
(316) 873-2381

MIAMI COUNTY JAIL
120 South Pearl
Paola, Kansas 66071
(913) 294-3232

MITCHELL COUNTY JAIL
Box 308
Beloit, Kansas 67420
(913) 738-3523

MONTGOMERY COUNTY JAIL
Courthouse
Independence, Kansas 67301
(316) 331-1500

MORRIS COUNTY JAIL
Courthouse
Council Grove, Kansas 66846
(316) 767-5615

MORTON COUNTY JAIL
1025 Morton Street
P. O. Box 801
Elkhart, Kansas 67950
(316) 697-4313

MCPHERSON COUNTY JAIL
Box 426
119 North Maple
McPherson, Kansas 67460
(316) 241-2720

NEMAHA COUNTY JAIL
212 North Sixth Street
Seneca, Kansas 66538
(913) 336-2311

NEOSHO COUNTY JAIL
Box 153
105 South Butler
Erie, Kansas 66733
(316) 244-3243

NESS COUNTY JAIL
P. O. Box 87
Ness City, Kansas 67560
(913) 798-3611

NORTON COUNTY JAIL
Courthouse
Norton, Kansas 67654
(913) 877-3347

OSBORNE COUNTY JAIL
104 South Fifth Street
Osborne, Kansas 67473
(913) 346-2522

OTTAWA COUNTY JAIL
317 North Concord
Minneapolis, Kansas 67467
(913) 392-2161

PAWNEE COUNTY JAIL
116 West Wighth
Larned, Kansas 67550
(316) 285-2211

POTTAWATOMIE COUNTY JAIL
P. O. Box 250
Westmoreland, Kansas 66549
(913) 457-3481

PRATT COUNTY JAIL
313 South Oak
Pratt, Kansas 67124
(316) 672-2321

RAWLINS COUNTY JAIL
607 Main
Atwood, Kansas 67730
(913) 626-3208

RENO COUNTY JAIL
Law Enforcement Center
210 West First
Hutchinson, Kansas 67501
(316) 665-6601

REPUBLIC COUNTY JAIL
Republic County Courthouse
Belleville, Kansas 66935
(913) 527-5128

RICE COUNTY JAIL
120 East Main
Lyons, Kansas 67554
(316) 257-2363

RILEY COUNTY JAIL
600 Colorado
Manhattan, Kansas 66502
(913) 537-2112

ROOKS COUNTY JAIL
Rooks County Courthouse
Stockton, Kansas 67669
(913) 425-6312

RUSSELL COUNTY JAIL
210 East Fourth Street
Russell, Kansas 67665
(913) 483-2151

SALINE COUNTY JAIL
P. O. Box 1606
251 North Tenth
Salina, Kansas 67401
(913) 825-5488

SCOTT COUNTY JAIL
303 Court
Scott City, Kansas 67871
(316) 872-2133

SEDGWICK COUNTY JAIL
525 North Main
Wichita, Kansas 67203
(316) 268-7264

SEWARD COUNTY JAIL
112 East Fifth
Liberal, Kansas 67901
(316) 624-3931

SHAWNEE COUNTY JAIL
200 East Seventh Street
Topeka, Kansas 66603
(913) 295-4072

SHERMAN COUNTY JAIL
P. O. Box 127
222 East Ninth
Goodland, Kansas 67735
(913) 899-6180

SMITH COUNTY JAIL
217 South Jefferson
Smith Center, Kansas 67967
(913) 282-3541

STANTON COUNTY JAIL
P. O. Box 460
Johnson, Kansas 67855
(316) 492-6866

STEVENS COUNTY JAIL
P. O. Box 459
510 Monroe
Hugoton, Kansas 67951
(316) 544-4386

SUMNER COUNTY JAIL
500 North Washington
Wellington, Kansas 67152
(316) 326-3622

THOMAS COUNTY JAIL
225 North Court
Colby, Kansas 67701
(913) 462-6725

WABAUNSEE COUNTY JAIL
Wabaunsee County Courthouse
Alma, Kansas 66401
(913) 765-2217

WASHINGTON COUNTY JAIL
23 C Street
Washington, Kansas 66968
(913) 325-2293

WILSON COUNTY JAIL
421 North Seventh Street
Fredonia, Kansas 66736
(316) 378-3622

WOODSON COUNTY JAIL
Courthouse
Yates Center, Kansas 66783
(316) 625-2147

WYANDOTTE COUNTY JAIL
710 North Seventh
Kansas City, Kansas 66101
(913) 573-2872

COUNTY AND CITY LOCKUPS

LOCKUP-"A facility operated by a unit of local government for the physical detention or confinement, for a period of seventy-two hours or less, of persons charged with, or convicted of, criminal offenses."

ARKANSAS CITY LOCKUP
First and Central
Arkansas City, Kansas 67005
(316) 442-3344

BAXTER SPRINGS LOCKUP
Eleventh and Park
Baxter Springs, Kansas 66713
(316) 856-2112

CHANUTE CITY LOCKUP
Second and Santa Fe
Chanute, Kansas 66720
(316) 431-3348

COFFEYVILLE CITY LOCKUP
Seventh and Walnut Street
Coffeyville, Kansas 67337
(316) 251-1700

EUREKA CITY LOCKUP
114 South Main
Eureka, Kansas 67045
(316) 583-5527

GALENA CITY LOCKUP
315 West Seventh Street
Galena, Kansas 66739
(316) 783-2428

GARDEN CITY LOCKUP
P. O. Box 499
116 East Chestnut
Garden City, Kansas 67846
(316) 275-4251

GREELEY COUNTY LOCKUP
Box K
Tribune, Kansas 67879
(316) 376-4233

HASKELL COUNTY LOCKUP
Box 254
Courthouse
Sublette, Kansas 67877
(316) 675-2289

HERINGTON CITY LOCKUP
700 South Broadway
Herington, Kansas 67449
(913) 258-2226

HOLTON CITY LOCKUP
301 West Fourth
Holton, Kansas 66436
(913) 364-2174

JUNCTION CITY LOCKUP
Municipal Building
700 North Jefferson
Junction City, Kansas 66441
(913) 238-5912

OAKLEY CITY LOCKUP
209 Hudson
Oakley, Kansas 67548
(913) 672-3219

PARSONS CITY LOCKUP
Parsons Police Department
Parsons, Kansas 67357
(316) 471-1700

PITTSBURG CITY LOCKUP
611 North Pine
Pittsburg, Kansas 66762
(316) 231-1700

WALLACE COUNTY LOCKUP
Box 37
Sharon Springs, Kansas 67758
(913) 852-4288

WICHITA COUNTY LOCKUP
Box 328
Leoti, Kansas 67861
(316) 375-2723

WINFIELD CITY LOCKUP
812 Millington
Winfield, Kansas 67156
(316) 221-3344

COUNTY AND CITY HOLDING FACILITIES

HOLDING FACILITY-"A facility operated by a unit of local government for the temporary physical detention of persons awaiting processing, booking, appearance before a court of competent jurisdiction, or discharge."

ANDERSON COUNTY HOLDING FACILITY
401 South Main
Garnett, Kansas 66032
(913) 448-5428

ATCHISON COUNTY HOLDING FACILITY
513 Kansas Avenue
Atchison, Kansas 66002
(913) 367-4323

AUGUSTA HOLDING FACILITY
Sixth and School
Augusta, Kansas 67010
(316) 775-6355

BONNER SPRINGS HOLDING FACILITY
205 East Second
Bonner Springs, Kansas 66012
(913) 422-1020

COFFEY COUNTY HOLDING FACILITY
Coffey County Courthouse
Burlington, Kansas 66839
(316) 364-2123

DOUGLAS HOLDING FACILITY
P. O. Box 392
Douglas, Kansas 67039
(316) 746-2103

HAYSVILLE HOLDING FACILITY
200 West Grand
Haysville, Kansas 67060
(316) 524-4243

HOISINGTON HOLDING FACILITY
P. O. Box 418
Hoisington, Kansas 67544
(316) 793-7896

HORTON HOLDING FACILITY
215 East Eighth
Horton, Kansas 66439
(913) 486-2694

KINGMAN COUNTY HOLDING FACILITY
120 Spruce
Kingman, Kansas 67068
(316) 532-5133

LEAWOOD HOLDING FACILITY
9617 Lee Boulevard
Leawood, Kansas 66206
(913) 642-5555

MULVANE HOLDING FACILITY
211 North Second
Mulvane, Kansas 67110
(316) 777-1111

NORTHEAST HOLDING FACILITY
6000 Lamar
Mission, Kansas 66202
(913) 384-1100 Ext 215

OSAGE CITY HOLDING FACILITY
727 South Fourth Street
Osage City, Kansas 66523
(913) 528-3957

OSAGE COUNTY HOLDING FACILITY
717 Topeka Avenue
Lyndon, Kansas 66451
(913) 828-3344

OVERLAND PARK HOLDING FACILITY
8500 Antioch
Overland Park, Kansas 66612
(913) 381-5252

PRAIRIE VILLAGE HOLDING FACILITY
77th and Mission Road
Prairie Village, Kansas 66208
(913) 642-6868

RUSSELL HOLDING FACILITY
339 East Eighth
P. O. Box 12
Russell, Kansas 67665
(913) 483-2121

SHAWNEE HOLDING FACILITY
6535 Quivira Road
Shawnee, Kansas 66216
(913) 631-2155

STAFFORD COUNTY HOLDING FACILITY
Courthouse
Saint John, Kansas 67576
(316) 549-3247

STOCKTON HOLDING FACILITY
115 South Walnut
Stockton, Kansas 67669
(913) 425-6220

WILSON HOLDING FACILITY
26th and Avenue F
Wilson, Kansas 67490
(316) 658-4444

STATE SECURITY HOSPITAL
Larned State Hospital
Dillon Building
Larned, Kansas 67550
(316) 285-2131

JUVENILE DETENTION CENTERS

JOHNSON COUNTY JUVENILE
DETENTION HOME
905 West Spruce
Olathe, Kansas 66061
(913) 764-3247

KAW VIEW DETENTION CENTER
3701 Ford
Kansas City, Kansas 66102
(913) 371-2127

LAKE AFTON BOYS RANCH
R. R. #1
Goddard, Kansas 67502
(316) 794-8666

LYON COUNTY YOUTH CENTER
1215 Sylvan
Emporia, Kansas 66801
(316) 342-5637

SHAWNEE COUNTY YOUTH CENTER
2620 East 23rd Street
Topeka, Kansas 66605
(913) 233-6459

YOUTH RESIDENCE HALL
1900 East Morris
Wichita, Kansas 67211
(316) 268-7725

The following definitions were used in classifying or grouping local detention facilities:

JAIL - "A facility operated by a unit of local government for the physical detention or confinement, for a period of one year or less, of persons charged with, or convicted of, criminal offenses.

LOCKUP - "A facility operated by a unit of local government for the physical detention or confinement, for a period of seventy-two hours or less, of persons charged with, or convicted of, criminal offenses.

HOLDING FACILITY - "A facility operated by a unit of local government for the temporary physical detention of persons awaiting processing, booking, appearance before a court of competent jurisdiction, or discharge.

CHAPTER V
JUVENILE

BUREAU OF MATERNAL AND CHILD HEALTH
Health and Environment,
Department of
Building 740
Forbes Field
Topeka, Kansas 66619
(913) 682-9360

COURT SERVICES OFFICERS

FIRST JUDICIAL DISTRICT
Chief Court Services Officer
Leavenworth County Courthouse
Leavenworth, Kansas 66048
(913) 682-6060

SECOND JUDICIAL DISTRICT
Chief Court Services Officer
Jackson County Courthouse
Holton, Kansas 66436
(913) 364-2191

THIRD JUDICIAL DISTRICT
Chief Court Services Officer
200 East Seventh
Suite 104
Topeka, Kansas 66603
(913) 295-4004

FOURTH JUDICIAL DISTRICT
Chief Court Services Officer
Allen County Courthouse
Iola, Kansas 66749
(316) 365-5148

FIFTH JUDICIAL DISTRICT
Chief Court Services Office
412 Commercial
Emporia, Kansas 66801
(316) 343-7330

SIXTH JUDICIAL DISTRICT
Bourbon County Courthouse
Fort Scott, Kansas 66701
(316) 223-1790

SEVENTH JUDICIAL DISTRICT
Chief Court Services Officer
Law Enforcement Center
Lawrence, Kansas 66044
(913) 841-7700

EIGHTH JUDICIAL DISTRICT
Chief Court Services Officer
Geary County Courthouse
Junction City, Kansas 66441
(913) 762-2302

NINTH JUDICIAL DISTRICT
Chief Court Services Officer
Harvey County Courthouse
Newton, Kansas 67114
(316) 283-7232

TENTH JUDICIAL DISTRICT
Chief Court Services Officer
Johnson County Courthouse
Olathe, Kansas 66061
(913) 782-5000

ELEVENTH JUDICIAL DISTRICT
Chief Court Services Officer
Judicial Center
Fourth & Pine
Pittsburg, Kansas 66762
(316) 232-2460

TWELFTH JUDICIAL DISTRICT
Chief Court Services Officer
Box 582
Concordia, Kansas 66901
(913) 243-7040

THIRTEENTH JUDICIAL DISTRICT
Chief Court Services Officer
Greenwood County Courthouse
Eureka, Kansas 67045
(316) 583-7520

FOURTEENTH JUDICIAL DISTRICT
Chief Court Services Officer
Montgomery County Courthouse
Independence, Kansas 67301
(316) 331-1060

FIFTEENTH JUDICIAL DISTRICT
Chief Court Services Officer
Thomas County Courthouse
Colby, Kansas 67701
(913) 462-7613

SIXTEENTH JUDICIAL DISTRICT
Chief Court Services Officer
Ford County Courthouse
Dodge City, Kansas 67801
(316) 225-0940

SEVENTEENTH JUDICIAL DISTRICT
Chief Court Services Officer
Norton County Courthouse
Norton, Kansas 67654
(913) 877-5533

EIGHTEENTH JUDICIAL DISTRICT
Chief Court Services Officer
Sedgwick County Courthouse
Wichita, Kansas 67203
(316) 268-7302

NINETEENTH JUDICIAL DISTRICT
Chief Court Services Officer
Cowley County Courthouse
Winfield, Kansas 67156
(316) 221-4066

TWENTIETH JUDICIAL DISTRICT
Chief Court Services Officer
Barton County Courthouse
Great Bend, Kansas 67530
(316) 792-3202

TWENTY-FIRST JUDICIAL DISTRICT
121-A South Fourth
Room 201
Manhattan, Kansas 66502
(913) 539-3822

TWENTY-SECOND JUDICIAL DISTRICT
Chief Court Services Officer
Brown County Courthouse
Hiawatha, Kansas 66434
(913) 742-7302

TWENTY-THIRD JUDICIAL DISTRICT
Chief Court Services Officer
Box 8
Hays, Kansas 67550
(913) 628-6654

TWENTY-FOURTH JUDICIAL DISTRICT
Chief Court Services Officer
Ness County Courthouse
Ness City, Kansas 67560
(913) 798-3128

TWENTY-FIFTH AND TWENTY-SIXTH
JUDICIAL DISTRICTS
Chief Court Services Officer
504 St. John
Garden City, Kansas 67846
(316) 276-2343

TWENTY-SEVENTH JUDICIAL DISTRICT
Chief Court Services Officer
Reno County Courthouse
Hutchinson, Kansas 67501
(316) 662-4411

TWENTY-EIGHTH JUDICIAL DISTRICT
Chief Court Services Officer
Saline County Courthouse
Salina, Kansas 67401
(913) 825-7241

TWENTY-NINTH JUDICIAL DISTRICT
Chief Court Services Officer
Wyandotte County Courthouse
Kansas City, Kansas 66101
(913) 573-2846

JUVENILE DETENTION CENTERS

JOHNSON COUNTY JUVENILE DETENTION HOME
905 West Spruce
Olathe, Kansas 66061
(913) 764-3247

KAW VIEW DETENTION CENTER
3701 Ford
Kansas City, Kansas 66102
(913) 371-2127

LAKE AFTON BOYS RANCH
R. R. #1
Goddard, Kansas 67502
(316) 794-8666

LYON COUNTY YOUTH CENTER
1215 Sylvan
Emporia, Kansas 66801
(316) 342-5637

SHAWNEE COUNTY YOUTH CENTER
2620 East 23rd Street
Topeka, Kansas 66605
(913) 233-6459

YOUTH RESIDENCE HALL
1900 East Morris
Wichita, Kansas 67211
(316) 268-7725

SOCIAL AND REHABILITATION SERVICES

SOCIAL AND REHABILITATION SERVICE,
DEPARTMENT OF
Sixth Floor
State Office Building
Topeka, Kansas 66612
(913) 296-3959

AREA OFFICES:

Chanute Area Office (15)
1500 West Seventh
Chanute, Kansas 66720
(316) 431-7100

Emporia Area Office (8)
15 East Sixth Avenue
Emporia, Kansas 66801
(316) 342-2505

Garden City Area Office (2)
2701 North Eleventh Street
Garden City, Kansas 67846
(316) 275-0271

Hays Area Office (1)
3000 Broadway
Hays, Kansas 67601
(913) 628-1066

Hiawatha Area Office (10)
810 Oregon Street
Hiawatha, Kansas 66434
(913) 742-7186

Hutchinson Area Office (6)
129 West B Street
Hutchinson, Kansas 67501
(316) 663-5731

Junction City Area Office (9)
235 West Seventh
P. O. Box 1027
Junction City, Kansas 66441
(913) 762-5445

Kansas City Area Office (12)
Fourth and State
Kansas City, Kansas 66101
(913) 371-6700

Olathe Area Office (13)
One Patrons Plaza
Olathe, Kansas 66061
(913) 782-6600

Osawatomie Area Office (14)
Osawatomie State Hospital
Osawatomie, Kansas 66064
(913) 782-6600

Parsons Area Office (16)
400 North 32nd Street
Parsons, Kansas 67357
(316) 421-4500

Pittsburg Area Office (17)
20 & 69 Bypass
Pittsburg, Kansas 66762
(316) 231-5300

Pratt Area Office (4)
420 South Jackson
Pratt, Kansas 67124
(316) 672-5955

Salina Area Office (3)
120 West Iron
Salina, Kansas 67401
(913) 825-8111

Topeka Area Office (11)
2700 West Sixth
Topeka, Kansas 66606
(913) 295-9521

Wichita Area Office (5)
520 East William
Wichita, Kansas 67202
(316) 268-7440

Winfield Area Office (7)
117 College
P. O. Box 735
Winfield, Kansas 67156
(316) 221-6400

CHILDREN, YOUTH AND ADULT DIVISION
Social & Rehabilitation Services,
Department of
2700 West Sixth
Topeka, Kansas 66606
(913) 296-3284

KANSAS NEUROLOGICAL INSTITUTE
3107 West 21st
Topeka, Kansas 66604
(913) 296-5389

LARNED STATE HOSPITAL
Administrative Building
Larned, Kansas 67550
(316) 285-2131

RAINBOW MENTAL HEALTH FACILITY
2205 West 36th Street
Kansas City, Kansas 66103
(913) 384-1880

YOUTH CENTER AT ATCHISON
End North Second Street
Atchison, Kansas 66002
(913) 367-6590

YOUTH CENTER AT BELOIT
1720 North Hersey
Beloit, Kansas 67420
(913) 738-3571

YOUTH CENTER AT TOPEKA
1440 N. W. K-172
Topeka, Kansas 66608
(913) 296-7709

YOUTH REHABILITATION CENTERS

LARNED YOUTH REHABILITATION
CENTER
Larned State Hospital
Box 89
Allen Building
Larned, Kansas 67550
(316) 285-2131

OSAWATOMIE YOUTH REHABILITATION
CENTER
Osawatomie State Hospital
Box 500
Osawatomie, Kansas 66064
(913) 755-3151

TOPEKA YOUTH REHABILITATION
CENTER
2700 West Sixth Street
Topeka, Kansas 66606
(913) 296-5117

YOUTH SERVICE ORGANIZATIONS, ASSOCIATIONS
AND FOUNDATIONS

ACHIEVEMENT PLACE RESEARCH PROJECT
111 Haworth
University of Kansas
Lawrence, Kansas 66045
(913) 864-3446

KANSAS ACTION FOR CHILDREN
Box 5283
2053 Kansas
Topeka, Kansas 66605
(913) 232-0550

KANSAS ASSOCIATION OF DOMESTIC VIOLENCE
PROGRAMS
Box 1883
Topeka, Kansas 66601
(913) 827-5143

KANSAS ASSOCIATION OF LICENSED PRIVATE
CHILD CARE AGENCIES
P. O. Box 1348
Salina, Kansas 67401
(913) 825-0541

KANSAS CHILDREN'S SERVICE LEAGUE
Box 5314
2053 Kansas
Topeka, Kansas 66605
(913) 232-0543

KANSAS CHILDREN'S SERVICE LEAGUE
1503 Fulton
Garden City, Kansas 67846
(316) 276-3232

KANSAS CHILDREN'S SERVICE LEAGUE
500 West Twentieth
Hutchinson, Kansas 67501
(316) 669-0551

KANSAS CHILDREN'S SERVICE LEAGUE
1125 North Fifth
Kansas City, Kansas 66101
(913) 621-2016

KANSAS CHILDREN'S SERVICE LEAGUE
2323 Ridge Court
Lawrence, Kansas 66044
(913) 843-1700

KANSAS CHILDREN'S SERVICE LEAGUE
P. O. Box 517
Wichita, Kansas 67201
(316) 942-4261

KANSAS COMMITTEE FOR PREVENTION
OF CHILD ABUSE
Suite 301
214 West Sixth
Topeka, Kansas 66604
(913) 354-7738

KANSAS COUNCIL FOR CHILDREN
AND YOUTH
635 North Main, #16
Lindsborg, Kansas 67456
(316) 227-3250

KANSAS COUNCIL ON CRIME AND
DELINQUENCY
449 North St. Francis
Wichita, Kansas 67202
(316) 267-4201

KANSAS JUVENILE DETENTION
ASSOCIATION
2600 East 23rd
Topeka, Kansas 66605
(913) 232-6187

KANSAS PROBATION OFFICERS
ASSOCIATION
1001 South Minnesota
Wichita, Kansas 67211
(316) 268-7245

KAW VIEW CRISIS PROGRAM
3701 Ford
Kansas City, Kansas 66102
(913) 371-2247

MENNINGER FOUNDATION
3616 West Seventh
Topeka, Kansas 66606
(913) 234-9566

NATIONAL JUVENILE DETENTION
ASSOCIATION
The Old Stone Church
91 Public Square
Cleveland, Ohio 44113
(216) 241-7503

SRS/EDUCATION/COURT LIAISON COMMITTEE
Smith-Wilson Building
2700 West Sixth
Topeka, Kansas 66606
(913) 296-3967

CHAPTER VI
VICTIM SERVICES,
VICTIM/WITNESS SERVICES
AND
HOT LINES

Preceding page blank

VICTIM SERVICES

BATTERED WOMEN'S SHELTER PROJECT
P. O. Box 633
Lawrence, Kansas 66044
(913) 841-6887

BATTERED WOMEN'S TASK FORCE
225 West Twelfth
Topeka, Kansas 66612
(913) 233-1750
Crisis Line (913) 295-8499

DOMESTIC VIOLENCE CENTER
651 East Prescott
Salina, Kansas 67401
(913) 827-5862

DOUGLAS COUNTY RAPE VICTIM SUPPORT
PROJECT
1035 Pennsylvania
Lawrence, Kansas 66044
(913) 843-8985

HEADQUARTERS
1602 Massachusetts
Lawrence, Kansas 66044
(913) 841-2370
Hot Line (913) 841-2345

RAPE/BATTERED WOMAN SERVICES
Box 1191
Emporia, Kansas 66801
(316) 342-6116

RAPE CRISIS CENTER
Sixth & Elm
Hays, Kansas 67601
(913) 628-1041

RAPE CRISIS HOT LINE
3001 Avenue A
Dodge City, Kansas 67801
(316) 225-3381

RAPE CRISIS LINE
2 West 40
Kansas City, Missouri 64116
(816) 923-1123

RAPE CRISIS LINE
2 West 40
Kansas City, Missouri 64116
(816) 931-4527

RAPE VICTIM SUPPORT SERVICES
1035 Pennsylvania
Lawrence, Kansas 66044
(913) 843-8985

REGIONAL CRISIS CENTER
P. O. Box 164
Manhattan, Kansas 66502
(913) 539-2785

RENO COUNTY RAPE CENTER
21 East Second
Hutchinson, Kansas 67501
(316) 663-2522

TOPEKANS AGAINST CRIME, SEXUAL
ASSAULT PROGRAM
722 Kansas
Topeka, Kansas 66603
(913) 295-8499

WICHITA AREA RAPE CENTER, INC.
1801 East Tenth
Wichita, Kansas 67214
(316) 263-0185 (Office)
(316) 263-3002 (Crisis Line)

WOMEN'S CRISIS CENTER
P. O. Box 1740
Wichita, Kansas 67201
(316) 263-9806 or
(316) 263-6520

VICTIM/WITNESS PROGRAMS

JOHNSON COUNTY DISTRICT ATTORNEY'S
Victim/Witness Assistance Program
Johnson County Courthouse
Olathe, Kansas 66061
(913) 782-5000

McPHERSON COUNTY ATTORNEY'S
Victim/Witness Program
McPherson County Courthouse
McPherson, Kansas 67460
(316) 241-7111

SECRET WITNESS TELEPHONE
Riley County
600 Colorado
Manhattan, Kansas 66502
(913) 537-2596

SEDGWICK COUNTY DISTRICT ATTORNEY'S
Victim/Witness Program
Sedgwick County Courthouse
Wichita, Kansas 67203
(316) 268-7647

Preceding page blank

HOT LINES

ARSON HOT LINE
State Fire Marshal
Building 730
Forbes Field
Topeka, Kansas 66619
(800) 432-2919

CONSUMER PROTECTION DIVISION
Attorney General, Office of the
Kansas Judicial Center
301 S. W. Tenth Street
Topeka, Kansas 66612
(913) 296-2215

FRAUD HOT LINE
Social & Rehabilitation Services
Sixth Floor
State Office Building
Topeka, Kansas 66612
(800) 432-3913

CHAPTER VII FEDERAL OFFICES

CRIMINAL JUSTICE ADMINISTRATION,
PLANNING, RESEARCH AND EDUCATION

FEDERAL HIGHWAY ADMINISTRATION
Department of Transportation
444 Southeast Quincy
Topeka, Kansas 66603
(913) 295-2550

OFFICE OF JUSTICE ASSISTANCE,
RESEARCH AND STATISTICS
633 Indiana Avenue, N. W.
Washington, D. C. 20004
(202) 724-5966

BUREAU OF JUSTICE STATISTICS
633 Indiana Avenue, N. W.
Washington, D. C. 20004
(202) 724-5971

LAW ENFORCEMENT ASSISTANCE
ADMINISTRATION
633 Indiana Avenue, N. W.
Washington, D. C. 20531
(202) 724-5971

NATIONAL INSTITUTE OF JUSTICE
633 Indiana Avenue, N. W.
Washington, D. C. 20004
(202) 724-5966

UNITED STATES BUREAU OF THE CENSUS
Department of Commerce
Suite 500
Fourth and State
Kansas City, Kansas 66101
(816) 374-4601

LAW ENFORCEMENT

ALCOHOL, TOBACCO AND FIREARMS,
BUREAU OF
Treasury, Department of
Criminal Enforcement
811 Grand
Kansas City, Missouri 64106
(816) 374-3886

DEFENSE INVESTIGATIVE SERVICE
Defense, Department of
Topeka Resident Agency
444 Southeast Quincy
Topeka, Kansas 66603
(913) 235-3811

DRUG ENFORCEMENT ADMINISTRATION
Regional Director
Room 400
1150 Grand
Kansas City, Missouri 64106
(816) 374-2631

FEDERAL AVIATION ADMINISTRATION
601 East 12th
Federal Building
Kansas City, Missouri 64106
(816) 374-5449

FEDERAL BUREAU OF INVESTIGATION
Room 549
811 Grand
Kansas City, Missouri 64106
(816) 221-6100

FEDERAL BUREAU OF INVESTIGATION
444 Southeast Quincy
Topeka, Kansas 66603
(913) 235-3811

FEDERAL BUREAU OF INVESTIGATION
220 West Douglas
Wichita, Kansas 67202
(316) 264-7235

FORT LEAVENWORTH PROVOST MARSHAL
Fort Leavenworth, Kansas 66027
(913) 684-4021

FORT RILEY PROVOST MARSHAL
Building 39
Fort Riley, Kansas 66442
(913) 239-2695

IMMIGRATION AND NATURALIZATION SERVICE
Suite 1100
324 East Eleventh
Kansas City, Missouri 64106

INTERNAL REVENUE SERVICE
Regional Inspector
P. O. Box 2489
Wichita, Kansas 67201
(316) 267-6311

CRIMINAL INVESTIGATION DIVISION
Internal Revenue Service
444 Southeast Quincy
Topeka, Kansas 66603
(913) 295-2968

McCONNELL AIR FORCE BASE
AIR POLICE
2801 Rock Road
Wichita, Kansas 66621

POSTAL INSPECTOR'S OFFICE
Post Office Box 2188
424 South Kansas
Topeka, Kansas 66601
(913) 296-2740

UNITED STATES COAST GUARD
Dakota Street & Missouri River
Leavenworth, Kansas 66048
(913) 682-8440

UNITED STATES CUSTOMS SERVICE
Wichita Mid-Continent Airport
Wichita, Kansas 67209
(316) 942-2233

UNITED STATES IMMIGRATION SERVICE
Room 202
Airport Terminal Building
Wichita, Kansas 67209
(316) 942-2233

UNITED STATES MARSHAL
812 North Seventh
Kansas City, Kansas 66101
(816) 374-4296

UNITED STATES MARSHAL
444 Southeast Quincy
Topeka, Kansas 66603
(913) 295-2775

UNITED STATES MARSHAL
401 North Market
Wichita, Kansas 67202
(316) 267-6311

UNITED STATES SECRET SERVICE
220 West Douglas
Wichita, Kansas 67201
(316) 267-1452

JUDICIAL

COURTS

UNITED STATES DISTRICT COURT
812 North Seventh
Kansas City, Kansas 66101
(913) 374-4381

UNITED STATE DISTRICT COURT
United States Courthouse
401 North Market
Wichita, Kansas 67202
(316) 267-6311

PROSECUTORIAL

UNITED STATES ATTORNEY, OFFICE OF
148 New Federal Building
812 North Seventh Street
Kansas City, Kansas 66101
(913) 374-4666

UNITED STATES ATTORNEY, OFFICE OF
Department of Justice
444 Southeast Quincy
Topeka, Kansas 66603
(913) 295-2850

UNITED STATES ATTORNEY, OFFICE OF
Justice, U. S. Department of
Federal Building
401 North Market
Wichita, Kansas 67202
(316) 267-6311

DEFENDER OFFICES

FEDERAL PUBLIC DEFENDER
818 Grand
Kansas City, Missouri 64106
(816) 374-5851

FEDERAL PUBLIC DEFENDER
401 North Market
Wichita, Kansas 67202
(316) 267-6311

CORRECTIONS

BUREAU OF PRISONS
Justice, U. S. Department of
Airworld Center
10920 Ambassador Drive
Suite 200
Kansas City, Missouri 64153
(816) 891-7007

FEDERAL COMMUNITY TREATMENT CENTER
Justice, U. S. Department of
404 East Tenth Street
Kansas City, Missouri
(816) 374-3946

FEDERAL PRISON AT LEAVENWORTH,
UNITED STATES
Metropolitan Avenue
Leavenworth, Kansas 66048
(913) 682-8700

PAROLE COMMISSION
10920 Ambassador Drive
Suite 220
Kansas City, Missouri 64153
(816) 891-1395

UNITED STATES PROBATION DEPART-
MENT FOR KANSAS
401 North Market
Wichita, Kansas 67202
(316) 267-6311

UNITED STATES PROBATION OFFICE
811 Grand
Kansas City, Missouri 64106
(816) 374-5734

INDEX

Preceding page blank

INDEX

Name	Page
Abilene Municipal Court	37
Abilene Police Chief	19
Achievement Place Research Project	6
Adjutant General	11
Administration, Department on	3
Aging, Department on	3
Alcohol and Drug Abuse, Special Programs Division, SRS	4
Alcohol Tobacco and Firearms, Bureau of	79
Alcoholic Beverage Control Board	11
Allen County Attorney	41
Allen County Community College	5
Allen County Jail	56
Allen County Sheriff	14
American Civil Liberties Union	50
Anderson County Attorney	41
Anderson County Holding Facility	61
Anderson County Sheriff	14
Anthony Police Chief	19
Arkansas City Attorney	46
Arkansas City Lockup	60
Arkansas City Municipal Court	37
Arkansas City Police Chief	19
Arma Police Chief	19
Arson Hot Line	76
Arson Investigator; Great Bend, Kansas	11
Arson Investigator; Hutchinson, Kansas	11
Arson Investigator; Kansas City, Kansas	11
Arson Investigator; Lawrence, Kansas	11
Arson Investigator; Lenexa, Kansas	11
Arson Investigator; Olathe, Kansas	11
Arson Investigator; Parsons, Kansas	11
Arson Investigator; Salina, Kansas	11
Arson Investigator; Shawnee, Kansas	11
Arson Investigator; Topeka (local)	12
Arson Investigator; Topeka (state)	11
Arson Investigator; Wichita, Kansas	12
Arson Investigator; Winfield, Kansas	11
Arson Investigator; Yates Center, Kansas	11
Atchison City Attorney	46
Atchison County Attorney	41
Atchison County Jail	56
Atchison County Sheriff	14
Atchison Holding Facility	61
Atchison Municipal Court	37
Atchison Police Chief	19

Preceding page blank

Attica Police Chief	19
Attorney General, Office of the	41
Augusta City Attorney	46
Augusta Holding Facility	61
Augusta Municipal Court	37
Augusta Police Chief	19
Baldwin City Police Chief	20
Barber County Attorney	41
Barber County Jail	56
Barber County Sheriff	14
Barton County Attorney	41
Barton County Community College	5
Barton County Jail	56
Barton County Sheriff	14
Basehor Police Chief	20
Battered Women's Shelter Project	75
Battered Women's Task Force	75
Baxter Springs City Attorney	46
Baxter Springs Lockup	60
Baxter Springs Municipal Court	37
Baxter Springs Police Chief	20
Belleville Police Chief	20
Beloit Police Chief	20
Blue Rapids Police Chief	20
Bonner Springs City Attorney	46
Bonner Springs Holding Facility	62
Bonner Springs Municipal Court	37
Bonner Springs Police Chief	20
Bourbon County Attorney	42
Bourbon County Jail	57
Bourbon County Sheriff	14
Brown County Attorney	42
Brown County Jail	57
Brown County Sheriff	14
Budget, Division of	3
Bureau of Justice Statistics	79
Bureau of Maternal and Child Health	67
Bureau of Prisons	80
Burlington Police Chief	20
Butler County Attorney	42
Butler County Community College	5
Butler County Jail	57
Butler County Sheriff	14
Caney Police Chief	20
Capitol Area Security Patrol	14

CONTINUED

1 OF 2

Cawker City Police Chief	20
Center for Public Affairs	6
Center for Research, Inc.	6
Chanute City Attorney	47
Chanute City Lockup	61
Chanute Municipal Court	37
Chanute Police Chief	20
Chanute SRS Area Office	69
Chase County Attorney	42
Chase County Sheriff	14
Chautauqua County Attorney	42
Chautauqua County Jail	57
Chautauqua County Sheriff	14
Cherryvale Police Chief	20
Cherokee County Attorney	42
Cherokee County Jail	57
Cherokee County Sheriff	14
Cheyenne County Attorney	42
Cheyenne County Jail	57
Cheyenne County Sheriff	14
Chief Jail Inspector	55
Children, Youth and Adult Division; SRS	4
City Attorney's Association of Kansas	50
Clark County Attorney	42
Clark County Jail	57
Clark County Sheriff	15
Clay Center City Attorney	57
Clay Center Municipal Court	37
Clay Center Police Chief	20
Clay County Attorney	42
Clay County Jail	57
Clay County Sheriff	15
Clerk of Appellate Courts	29
Clerk of District Court, Abilene	32
Clerk of District Court, Alma	31
Clerk of District Court, Anthony	35
Clerk of District Court, Ashland	34
Clerk of District Court, Atchison	31
Clerk of District Court, Atwood	34
Clerk of District Court, Belleville	33
Clerk of District Court, Beloit	33
Clerk of District Court, Burlington	32
Clerk of District Court, Chanute	33
Clerk of District Court, Cimarron	34
Clerk of District Court, Clay Center	35

Clerk of District Court, Colby	34
Clerk of District Court, Coldwater	34
Clerk of District Court, Columbus	33
Clerk of District Court, Concordia	33
Clerk of District Court, Cottonwood Falls	32
Clerk of District Court, Council Grove	32
Clerk of District Court, Dighton	36
Clerk of District Court, Dodge City	34
Clerk of District Court, El Dorado	33
Clerk of District Court, Elkhart	36
Clerk of District Court, Ellsworth	35
Clerk of District Court, Emporia	32
Clerk of District Court, Eureka	33
Clerk of District Court, Fort Scott	32
Clerk of District Court, Fredonia	33
Clerk of District Court, Garden City	36
Clerk of District Court, Garnett	32
Clerk of District Court, Goodland	34
Clerk of District Court, Gove	35
Clerk of District Court, Great Bend	35
Clerk of District Court, Greensburg	34
Clerk of District Court, Hays	35
Clerk of District Court, Hiawatha	35
Clerk of District Court, Hill City	33
Clerk of District Court, Holton	31
Clerk of District Court, Howard	33
Clerk of District Court, Hoxie	34
Clerk of District Court, Hugoton	37
Clerk of District Court, Hutchinson	37
Clerk of District Court, Independence	33
Clerk of District Court, Iola	31
Clerk of District Court, Jetmore	36
Clerk of District Court, Johnson	36
Clerk of District Court, Junction City	32
Clerk of District Court, Kansas City	37
Clerk of District Court, Kingman	35
Clerk of District Court, Kinsley	36
Clerk of District Court, Lacrosse	36
Clerk of District Court, Lakin	36
Clerk of District Court, Larned	36
Clerk of District Court, Lawrence	32
Clerk of District Court, Leavenworth	31
Clerk of District Court, Leoti	36
Clerk of District Court, Liberal	37
Clerk of District Court, Lincoln	33

Clerk of District Court, Lyndon	32
Clerk of District Court, Lyons	35
Clerk of District Court, McPherson	32
Clerk of District Court, Manhattan	35
Clerk of District Court, Mankato	33
Clerk of District Court, Marion	32
Clerk of District Court, Marysville	35
Clerk of District Court, Medicine Lodge	34
Clerk of District Court, Meade	34
Clerk of District Court, Minneapolis	37
Clerk of District Court, Mound City	32
Clerk of District Court, Ness City	36
Clerk of District Court, Newton	32
Clerk of District Court, Norton	34
Clerk of District Court, Oakley	35
Clerk of District Court, Oberlin	34
Clerk of District Court, Olathe	32
Clerk of District Court, Osborne	34
Clerk of District Court, Oskaloosa	31
Clerk of District Court, Ottawa	32
Clerk of District Court, Paola	32
Clerk of District Court, Parsons	33
Clerk of District Court, Phillipsburg	34
Clerk of District Court, Pittsburg	33
Clerk of District Court, Pratt	35
Clerk of District Court, Russell	35
Clerk of District Court, St. Francis	34
Clerk of District Court, St. John	35
Clerk of District Court, Salina	37
Clerk of District Court, Scott City	36
Clerk of District Court, Sedan	33
Clerk of District Court, Seneca	35
Clerk of District Court, Sharon Springs	36
Clerk of District Court, Smith Center	34
Clerk of District Court, Stockton	33
Clerk of District Court, Sublette	36
Clerk of District Court, Syracuse	36
Clerk of District Court, Topeka	31
Clerk of District Court, Tribune	36
Clerk of District Court, Troy	35
Clerk of District Court, Ulysses	36
Clerk of District Court, Wakeeney	36
Clerk of District Court, Washington	33
Clerk of District Court, Wellington	35
Clerk of District Court, Westmoreland	31

Clerk of District Court, Wichita	34
Clerk of District Court, Winfield	35
Clerk of District Court, Yates Center	32
Cloud County Attorney	42
Cloud County Jail	57
Cloud County Sheriff	15
Coffey County Attorney	42
Coffey County Holding Facility	62
Coffey County Sheriff	15
Coffeyville City Attorney	47
Coffeyville City Lockup	61
Coffeyville Community College	5
Coffeyville Municipal Court	37
Coffeyville Police Chief	20
Colby City Attorney	47
Colby Community College	5
Colby Municipal Court	37
Colby Police Chief	20
Columbus Police Chief	20
Comanche County Attorney	42
Comanche County Sheriff	15
Commission on Civil Rights	3
Concordia City Attorney	47
Concordia Municipal Court	37
Concordia Police Chief	20
Conference of State Court Administrators	50
Consumer Protection Division	76
Conway Springs Police Chief	20
Corrections, Department of	55
Council Grove Police Chief	20
Court of Appeals, Chief Judge	29
Court Services Officer, Colby	40
Court Services Officer, Concordia	40
Court Services Officer, Dodge City	40
Court Services Officer, Emporia	40
Court Services Officer, Eureka	40
Court Services Officer, Fort Scott	40
Court Services Officer, Garden City	41
Court Services Officer, Great Bend	41
Court Services Officer, Hays	41
Court Services Officer, Hiawatha	41
Court Services Officer, Holton	40
Court Services Officer, Hutchinson	41
Court Services Officer, Independence	40
Court Services Officer, Iola	40

Court Services Officer, Junction City	40
Court Services Officer, Kansas City	41
Court Services Officer, Lawrence	40
Court Services Officer, Leavenworth	40
Court Services Officer, Manhattan	41
Court Services Officer, Ness City	41
Court Services Officer, Newton	40
Court Services Officer, Norton	41
Court Services Officer, Olathe	40
Court Services Officer, Pittsburg	40
Court Services Officer, Salina	41
Court Services Officer, Topeka	40
Court Services Officer, Wichita	41
Court Services Officer, Winfield	41
Court Services Specialist	40
Cowley County Attorney	42
Cowley County Community College	5
Cowley County Jail	57
Cowley County Sheriff	15
Crawford County Attorney	42
Crawford County Jail	57
Crawford County Sheriff	15
Crime Victims Reparations Board	3
Criminal and Civil Problems Western Conference	3
Criminal Investigation Division, IRS	79
Criminal Justice Ministry	3
Decatur County Attorney	42
Decatur County Jail	57
Decatur County Sheriff	15
Defense Investigative Service	79
Deputy Secretary of Institutions	55
Deputy Secretary of Community Correctional Services	55
Derby City Attorney	47
Derby Municipal Court	37
Derby Police Chief	20
Dickinson County Attorney	42
Dickinson County Jail	57
Dickinson County Sheriff	15
Diversion Program	49
Dodge City Attorney	47
Dodge City Community College	5
Dodge City Municipal Court	38
Dodge City Parole Office	55
Dodge City Police Chief	20
Domestic Violence Center	75

Doniphan County Attorney	42
Doniphan County Jail	57
Doniphan County Sheriff	15
Douglas County District Attorney	42
Douglas County Holding Facility	62
Douglas County Law Enforcement Center	57
Douglas County Rape Victim Support Project	75
Douglas County Sheriff	15
Downs Police Chief	20
Drug Enforcement Administration	79
Education, Department of	3
Edwards County Attorney	42
Edwards County Jail	57
Edwards County Sheriff	15
Edwardsville Police Chief	21
Eighteenth Judicial District, Administrative Judge	30
Eighteenth Judicial District, District Court Administrator	31
Eighth Judicial District, Administrative Judge	29
Eighth Judicial District, District Court Administrator	31
El Dorado City Attorney	47
El Dorado Municipal Court	38
El Dorado Police Chief	21
Eleventh Judicial District, Administrative Judge	30
Eleventh Judicial District, District Court Administrator	31
Elk County Attorney	42
Elk County Jail	57
Elk County Sheriff	15
Elkhart Police Chief	21
Ellinwood Police Chief	21
Ellis County Attorney	42
Ellis County Jail	57
Ellis County Sheriff	15
Ellis Police Chief	21
Ellsworth County Attorney	42
Ellsworth County Jail	57
Ellsworth County Sheriff	15
Emergency Preparedness, Division of	11
Emporia City Attorney	47
Emporia Municipal Court	38
Emporia Parole Office	55
Emporia Police Chief	21
Emporia SRS Area Office	69
Emporia State University	6
Emporia State University, Campus Police	26
Enterprise Police Chief	21

Equal Employment Opportunity	3
Eudora Police Chief	21
Eureka City Lockup	61
Eureka Police Chief	21
Fairway City Attorney	47
Fairway Municipal Court	38
Fairway Police Chief	21
Federal Assistance Program; KSU	6
Federal Aviation Administration	79
Federal Bureau of Investigation, Kansas City, Missouri	79
Federal Bureau of Investigation, Topeka, Kansas	79
Federal Bureau of Investigation, Wichita, Kansas	79
Federal Community Treatment Center	80
Federal Highway Administration	79
Federal Prison at Leavenworth, U.S.	81
Federal Public Defender, Kansas City, Missouri	80
Federal Public Defender, Wichita	80
Fifteenth Judicial District, Administrative Judge	30
Fifth Judicial District, Administrative Judge	29
Finney County Attorney	43
Finney County Jail	57
Finney County Sheriff	15
Fire Marshal	11
First Judicial District, Administrative Judge	29
First Judicial District, District Court Administrator	31
Fish and Game Commission	12
Ford County Attorney	43
Ford County Jail	57
Ford County Sheriff	15
Fort Hays State University	6
Fort Hays State University, Campus Police	26
Fort Leavenworth Provost Marshal	79
Fort Riley Provost Marshal	79
Fort Scott City Attorney	47
Fort Scott Community College	5
Fort Scott Municipal Court	38
Fort Scott Police Chief	21
Fort Scott Work Release Center	56
Fourteenth Judicial District, Administrative Judge	30
Fourth Judicial District, Administrative Judge	29
Fourth Judicial District, District Court Administrator	31
Franklin County Attorney	43
Franklin County Jail	58
Franklin County Sheriff	15
Fraud Detection Unit, SRS	12

Fraud Hot Line, SRS	76
Fredonia Police Chief	21
Frontenac Police Chief	21
Galena City Lockup	61
Galena Police Chief	21
Garden City Attorney	47
Garden City Community College	5
Garden City Lockup	61
Garden City Municipal Court	38
Garden City Police Chief	21
Garden City SRS Area Office	69
Gardner Police Chief	21
Garnett Police Chief	21
Geary County Attorney	43
Geary County Jail	58
Geary County Sheriff	15
Girard Police Chief	21
Goodland City Attorney	47
Goodland Municipal Court	38
Goodland Police Chief	21
Gove County Attorney	43
Gove County Sheriff	15
Governmental Ethics Commission	3
Governor's Committee on Criminal Administration	3
Graham County Attorney	43
Graham County Jail	58
Graham County Sheriff	16
Grant County Attorney	43
Grant County Jail	58
Grant County Sheriff	16
Gray County Attorney	43
Gray County Sheriff	16
Great Bend City Attorney	47
Great Bend Municipal Court	38
Great Bend Parole Office	55
Great Bend Police Chief	22
Greeley County Attorney	43
Greeley County Lockup	61
Greeley County Sheriff	16
Greenwood County Attorney	43
Greenwood County Jail	58
Greenwood County Sheriff	16
Hamilton County Attorney	43
Hamilton County Sheriff	16
Harper County Attorney	43

Harper County Jail	58
Harper County Sheriff	16
Harper Police Chief	22
Harvey County Attorney	43
Harvey County Jail	58
Harvey County Sheriff	16
Haskell County Attorney	43
Haskell County Lockup	61
Haskell County Sheriff	16
Hays City Attorney	47
Hays Municipal Court	38
Hays Police Chief	22
Hays SRS Area Office	69
Haysville City Attorney	47
Haysville Holding Facility	62
Haysville Municipal Court	38
Haysville Police Chief	22
Headquarters	75
Health and Environment, Department of	3
Herington City Lockup	61
Herington Police Chief	22
Hiawatha Police Chief	22
Hiawatha SRS Area Office	69
Highland Community College	5
Hill City Police Chief	22
Hillsboro Police Chief	22
Hodgeman County Attorney	43
Hodgeman County Jail	58
Hodgeman County Sheriff	16
Hoisington Holding Facility	62
Hoisington Police Chief	22
Holton City Lockup	61
Holton Police Chief	22
Horton Holding Facility	62
Horton Police Chief	22
Humboldt Police Chief	22
Hutchinson City Attorney	47
Hutchinson Community College	5
Hutchinson Municipal Court	38
Hutchinson Parole Office	55
Hutchinson Police Chief	22
Hutchinson SRS Area Office	69
Immigration and Naturalization Service	79
Independence City Attorney	47
Independence Community College	5

Independence Municipal Court	38
Independence Parole Office	55
Independence Police Chief	22
Indian Center of Topeka, Inc.	3
Information Systems and Computing, Division of	3
Insurance Department	4
Internal Revenue Service	79
Iola City Attorney	38
Iola Municipal Court	38
Iola Police Chief	22
Jackson County Attorney	43
Jackson County Jail	58
Jackson County Sheriff	16
Jail Inspector, Great Bend	55
Jail Inspector, Ottawa	55
Jefferson County Attorney	43
Jefferson County Jail	58
Jefferson County Sheriff	16
Jewell County Attorney	43
Jewell County Sheriff	16
Johnson County Community College	5
Johnson County District Attorney	43
Johnson County Jail	58
Johnson County Juvenile Detention Home	62
Johnson County Park Police	22
Johnson County Sheriff	16
Johnson County Victim/Witness Program	75
Judicial Administrator	29
Judicial Council	29
Junction City Attorney	48
Junction City Lockup	61
Junction City Municipal Court	38
Junction City Police Chief	22
Junction City SRS Area Office	69
Kansas Action for Children	70
Kansas Adult Authority	56
Kansas Air National Guard	11
Kansas Army National Guard	11
Kansas Association of Chiefs of Police	26
Kansas Association of Counties	4
Kansas Association of Domestic Violence Programs	70
Kansas Association of Licensed Private Child Care Agencies	70
Kansas Bar Association	50
Kansas Bureau of Investigation, Great Bend	12
Kansas Bureau of Investigation, Kansas City	12

Kansas Bureau of Investigation, Topeka	12
Kansas Bureau of Investigation, Valley Center	12
Kansas Children's Service League, Garden City	70
Kansas Children's Service League, Hutchinson	70
Kansas Children's Service League, Kansas City	70
Kansas Children's Service League, Lawrence	70
Kansas Children's Service League, Topeka	70
Kansas Children's Service League, Wichita	71
Kansas City Attorney	48
Kansas City Jail	58
Kansas City, Kansas Community College	5
Kansas City, Kansas Community Crime Prevention Council	4
Kansas City, Missouri Council on Crime Prevention	4
Kansas City, Missouri Crime Commission	4
Kansas City Municipal Court	38
Kansas City Parole Office	56
Kansas City Police Chief	22
Kansas City SRS Area Office	69
Kansas Committee for Prevention of Child Abuse	71
Kansas Correctional Institute for Women	55
Kansas Correctional-Vocational Training Center	55
Kansas Council for Children and Youth	71
Kansas Council on Crime and Delinquency	4
Kansas County and District Attorney's Association	50
Kansas Defender Project	50
Kansas District Clerk's Association	50
Kansas District Judge's Association	50
Kansas Highway Patrol, Headquarters	12
Kansas Highway Patrol, Chanute	12
Kansas Highway Patrol, Garden City	14
Kansas Highway Patrol, Hays	12
Kansas Highway Patrol, Olathe	14
Kansas Highway Patrol, Salina	12
Kansas Highway Patrol, Topeka	12
Kansas Highway Patrol, Wichita	12
Kansas Highway Patrol, Wichita (Turnpike)	14
Kansas Highway Patrol Communications	14
Kansas Highway Patrol Training Center	4
Kansas Intelligence Association	14
Kansas Juvenile Detention Association	71
Kansas Law Enforcement and Civil Defense Communications Committee	14
Kansas Law Enforcement Training Center	4
Kansas Municipal Judges Association	50
Kansas Neurological Institute	70
Kansas Probation Officers Association	50

Kansas Sheriff's Association	26
Kansas State Conference of NAACP Branches	4
Kansas State Industrial Reformatory	55
Kansas State Industrial Reformatory Work Release	56
Kansas State Peace Officer's Association	26
Kansas State Penitentiary	55
Kansas State Reception and Diagnostic Center	55
Kansas State University	6
Kansas State University, Campus Police	26
Kansas Trial Lawyer's Association	50
Kansas Turnpike Authority	4
Kansas Wesleyan University	6
Kaw View Crisis Program	71
Kaw View Detention Center	63
Kearny County Attorney	43
Kearny County Jail	58
Kearny County Sheriff	16
Kingman County Attorney	43
Kingman County Holding Facility	62
Kingman County Sheriff	16
Kingman Police Chief	22
Kinsley Police Chief	22
Kiowa County Attorney	43
Kiowa County Jail	58
Kiowa County Sheriff	16
Kiowa Police Chief	22
Labette County Attorney	44
Labette Community College	5
Labette County Jail	58
Labette County Sheriff	16
Lake Afton Boy's Ranch	63
Lane County Attorney	44
Lane County Jail	58
Lane County Sheriff	16
Lansing Police Chief	22
Larned City Attorney	48
Larned Municipal Court	38
Larned Police Chief	23
Larned State Hospital	70
Larned Youth Rehabilitation Center	70
Law Enforcement Assistance Administration	79
Lawrence City Attorney	48
Lawrence Municipal Court	38
Lawrence Police Chief	23
League of Kansas Municipalities	4

League of Women Voters of Kansas	4
Leavenworth City Attorney	48
Leavenworth County Attorney	44
Leavenworth County Jail	58
Leavenworth County Sheriff	16
Leavenworth Municipal Court	38
Leavenworth Police Chief	23
Leawood City Attorney	48
Leawood Holding Facility	62
Leawood Municipal Court	38
Leawood Police Chief	23
Legal Services for Prisoners, Inc., Hutchinson	50
Legal Services for Prisoners, Inc., Topeka	50
Legislative Research Department	4
Lenexa City Attorney	48
Lenexa Municipal Court	38
Lenexa Police Chief	23
Liberal City Attorney	48
Liberal Municipal Court	39
Liberal Police Chief	23
Lincoln County Attorney	44
Lincoln County Jail	58
Lincoln County Sheriff	17
Linn County Attorney	44
Linn County Jail	58
Linn County Sheriff	17
Logan County Attorney	44
Logan County Sheriff	17
Lyon County Attorney	44
Lyon County Jail	58
Lyon County Sheriff	17
Lyon County Youth Center	63
Lyons Police Chief	23
McConnell Air Force Base	80
McPherson City Attorney	48
McPherson County Attorney	44
McPherson County Jail	59
McPherson County Sheriff	17
McPherson County Victim/Witness Program	75
McPherson Municipal Court	39
McPherson Police Chief	23
Manhattan City Attorney	48
Manhattan Municipal Court	39
Manhattan Parole Office	56
Manhattan Police Chief	23

Marion County Attorney	44
Marion County Sheriff	17
Marion Police Chief	23
Marshall County Attorney	44
Marshall County Jail	58
Marshall County Sheriff	17
Marysville Police Chief	23
Maternal and Child Health, Bureau of	3
Meade County Attorney	44
Meade County Jail	58
Meade County Sheriff	17
Medicine Lodge Police Chief	23
Menninger Foundation	71
Mental Health and Retardation Division, SRS	5
Merriam City Attorney	48
Merriam Municipal Court	39
Merriam Police Chief	23
Mexican-American Affairs, Kansas Advisory Committee on	4
Miami County Attorney	44
Miami County Jail	59
Miami County Sheriff	17
Mission City Attorney	48
Mission Hills Police Chief	23
Mission Municipal Court	39
Mission Police Chief	23
Mission Woods Police Chief	23
Mitchell County Attorney	44
Mitchell County Jail	59
Mitchell County Sheriff	17
Montgomery County Attorney	44
Montgomery County Jail	59
Montgomery County Sheriff	17
Morris County Attorney	44
Morris County Jail	59
Morris County Sheriff	17
Morton County Attorney	44
Morton County Jail	59
Morton County Sheriff	17
Mulvane Holding Facility	62
Mulvane Police Chief	23
NAACP Regional Office IV	4
National Institute of Justice	79
National Juvenile Detention Association	71
Nemaha County Attorney	44
Nemaha County Jail	59

Nemaha County Sheriff	17
Neodesha Police Chief	23
Neosho County Attorney	44
Neosho County Community College	6
Neosho County Jail	59
Neosho County Sheriff	17
Ness City Police Chief	23
Ness County Attorney	44
Ness County Jail	59
Ness County Sheriff	17
Newton City Attorney	48
Newton Municipal Court	39
Newton Police Chief	23
Nineteenth Judicial District, Administrative Judge	30
Ninth Judicial District, Administrative Judge	30
Northcentral Fish & Game Regional Office	12
Northeast Holding Facility	62
Northwest Fish & Game Regional Office	12
Norton County Attorney	44
Norton County Jail	59
Norton County Sheriff	17
Norton Police Chief	23
Oakley City Lockup	61
Oakley Police Chief	24
Office of Justice Assistance, Research & Statistics	79
Office of the Ombudsman for Corrections	55
Olathe City Attorney	48
Olathe Municipal Court	39
Olathe Parole Office	56
Olathe Police Chief	24
Olathe SRS Area Office	69
Osage City Holding Facility	62
Osage City Police Chief	24
Osage County Attorney	44
Osage County Holding Facility	62
Osage County Sheriff	17
Osawatomie Police Chief	24
Osawatomie SRS Area Office	69
Osawatomie Youth Rehabilitation Center	70
Osborne County Attorney	44
Osborne County Jail	59
Osborne County Sheriff	17
Osborne Police Chief	24
Ottawa City Attorney	48
Ottawa County Attorney	45

Ottawa County Jail	59
Ottawa County Sheriff	17
Ottawa Municipal Court	39
Ottawa Police Chief	24
Overland Park City Attorney	48
Overland Park Holding Facility	62
Overland Park Municipal Court	39
Overland Park Police Chief	24
Paola Police Chief	24
Parole Commission	81
Parsons City Attorney	48
Parsons City Lockup	61
Parsons Municipal Court	39
Parsons Police Chief	24
Parsons SRS Area Office	69
Pawnee County Attorney	45
Pawnee County Jail	59
Pawnee County Sheriff	18
Phillips County Attorney	45
Phillips County Sheriff	18
Phillipsburg Police Chief	24
Pittsburg City Attorney	49
Pittsburg City Lockup	61
Pittsburg Municipal Court	39
Pittsburg Parole Office	56
Pittsburg Police Chief	24
Pittsburg SRS Area Office	69
Pittsburg State University	6
Pittsburg State University; Campus Police	26
Plainville Police Chief	24
Population Research Laboratory; KSU	6
Postal Inspector's Office	80
Pottawatomie County Attorney	45
Pottawatomie County Jail	59
Pottawatomie County Sheriff	18
Prairie Village City Attorney	49
Prairie Village Holding Facility	62
Prairie Village Municipal Court	39
Prairie Village Police Chief	24
Pratt City Attorney	49
Pratt Community College	6
Pratt County Attorney	45
Pratt County Jail	59
Pratt County Sheriff	18
Pratt Municipal Court	39

Pratt Police Chief	24
Pratt SRS Area Office	69
Probation and Parole Administrator	55
Public Defender Committee	50
Public Defender Eighth Judicial District	50
Public Defender Third Judicial District	49
Public Defender Twenty-eighth Judicial District	50
Rainbow Mental Health Facility	70
Rape/Battered Women's Services	75
Rape Crisis Center	75
Rape Crisis Hot Line	75
Rape Crisis Line	75
Rape Victims Support Services	75
Rawlins County Attorney	45
Rawlins County Jail	59
Rawlins County Sheriff	18
Research and Statistics Section, SRS	5
Regional Crisis Center	75
Registration and Health Statistics Services, Bureau of	3
Reno County Attorney	45
Reno County Jail	59
Reno County Rape Center	75
Reno County Sheriff	18
Republic County Attorney	45
Republic County Jail	59
Republic County Sheriff	18
Revisor of Statutes, Office of	5
Rice County Attorney	45
Rice County Jail	59
Rice County Sheriff	18
Riley County Attorney	45
Riley County Jail	59
Riley County Sheriff	18
Roeland Park City Attorney	49
Roeland Park Municipal Court	39
Roeland Park Police Chief	24
Rooks County Attorney	45
Rooks County Jail	59
Rooks County Sheriff	18
Russell City Attorney	49
Russell County Attorney	45
Russell County Jail	60
Russell County Sheriff	18
Russell Holding Facility	62
Russell Municipal Court	39

Russell Police Chief	24
Rush County Attorney	45
Rush County Sheriff	18
Sabetha Police Chief	24
Safety Department	5
Salina City Attorney	49
Salina Municipal Court	39
Salina Parole Office	56
Salina Police Chief	24
Salina SRS Area Office	69
Saline County Attorney	45
Saline County Jail	60
Saline County Sheriff	18
Satanta Police Chief	24
Scott City Police Chief	24
Scott County Attorney	45
Scott County Jail	60
Scott County Sheriff	18
Second Judicial District, Administrative Judge	29
Secret Witness Telephone	75
Sedan Police Chief	25
Sedgwick County District Attorney	45
Sedgwick County Jail	60
Sedgwick County Sheriff	18
Sedgwick County Victim/Witness Program	75
Seneca Police Chief	25
Seventeenth Judicial District, Administrative Judge	30
Seventh Judicial District, Administrative Judge	29
Seward County Attorney	45
Seward County Community College	6
Seward County Jail	60
Seward County Sheriff	18
Shawnee City Attorney	49
Shawnee County District Attorney	45
Shawnee County Jail	60
Shawnee County Sheriff	18
Shawnee County Youth Center	63
Shawnee Holding Facility	62
Shawnee Municipal Court	39
Shawnee Police Chief	25
Sheridan County Attorney	45
Sheridan County Sheriff	18
Sherman County Attorney	45
Sherman County Jail	60
Sherman County Sheriff	18

Silver Lake Police Chief	25
Sixteenth Judicial District, Administrative Judge	30
Sixth Judicial District, Administrative Judge	29
Smith Center Police Chief	25
Smith County Attorney	45
Smith County Jail	60
Smith County Sheriff	18
Social & Rehabilitation Services, Department of	4
Solomon Police Chief	25
Southcentral Fish & Game Regional Office	12
Southeast Fish & Game Regional Office	12
South Hutchinson Police Chief	25
Southwest Fish & Game Regional Office	12
SRS/Education/Court Liaison Committee	71
Stafford County Attorney	46
Stafford County Holding Facility	62
Stafford County Sheriff	19
Stanton County Attorney	46
Stanton County Jail	60
Stanton County Sheriff	19
State Park and Resources Authority	14
State Security Hospital	62
Statistical Analysis Center	3
Stevens County Attorney	46
Stevens County Jail	60
Stevens County Sheriff	19
Stockton Holding Facility	62
Stockton Police Chief	25
Sublette Police Chief	25
Summer Legal Intern Prosecutor Program	49
Sumner County Attorney	46
Sumner County Jail	60
Sumner County Sheriff	19
Supreme Court, Aid to Indigent Criminal Defendants	49
Supreme Court, Chief Justice	29
Tenth Judicial District, Administrative Judge	30
Tenth Judicial District, District Court Administrator	31
Third Judicial District, Administrative Judge	29
Third Judicial District, District Court Administrator	31
Thirteenth Judicial District, Administrative Judge	30
Thomas County Attorney	46
Thomas County Jail	60
Thomas County Sheriff	19
Tonganoxie Police Chief	25
Topeka's Against Crime Sexual Assault Program	75

Topeka Airport Authority	25
Topeka City Attorney	49
Topeka Halfway House (Female)	56
Topeka Halfway House (Male)	56
Topeka Municipal Court	39
Topeka Parole Office	56
Topeka Police Chief	25
Topeka SRS Area Office	69
Topeka Work Release Center	56
Topeka Youth Rehabilitation Center	70
Toronto Honor Camp	55
Toronto Honor Camp Parole Office	56
Transportation, Department of	5
Trego County Attorney	46
Trego County Sheriff	19
Twelfth Judicial District, Administrative Judge	30
Twentieth Judicial District, Administrative Judge	30
Twentieth Judicial District, District Court Administrator	31
Twenty-eighth Judicial District, Administrative Judge	30
Twenty-fifth Judicial District, Administrative Judge	30
Twenty-first Judicial District, Administrative Judge	30
Twenty-fourth Judicial District, Administrative Judge	30
Twenty-ninth Judicial District, Administrative Judge	31
Twenty-ninth Judicial District, District Court Administrator	31
Twenty-second Judicial District, Administrative Judge	30
Twenty-seventh Judicial District, Administrative Judge	30
Twenty-sixth Judicial District, Administrative Judge	30
Twenty-third Judicial District, Administrative Judge	30
Ulysses Police Chief	25
Unified Judicial Department	29
United States Attorney, Office of, Kansas City	80
United States Attorney, Office of, Topeka	80
United States Attorney, Office of, Wichita	80
United States Bureau of the Census	79
United States Coast Guard	80
United States Customs Service	80
United States District Court, Kansas City, Kansas	80
United States District Court, Wichita	80
United States Immigration Service	80
United States Marshal, Kansas City, Kansas	80
United States Marshal, Topeka	80
United States Marshal, Wichita	80
United States Probation Department for Kansas	81
United States Probation Office	81
United States Secret Service	80

University of Kansas	6
University of Kansas, Campus Police	26
University of Kansas, Law School	6
University of Kansas, Medical Center Campus Police	26
Valley Center Police Chief	25
Vehicles, Division of	7
WaKeeney Police Chief	25
Wabaunsee County Attorney	46
Wabaunsee County Jail	60
Wabaunsee County Sheriff	19
Wallace County Attorney	46
Wallace County Lockup	61
Wamego Police Chief	19
Washburn University	6
Washburn University, Law School	6
Washburn University, Legal Clinic	50
Washington County Attorney	46
Washington County Jail	60
Washington County Sheriff	19
Wellington City Attorney	49
Wellington Municipal Court	39
Wellington Police Chief	25
Westwood Police Chief	25
Westwood Hills Police Chief	25
Wichita Area Rape Center	75
Wichita City Attorney	49
Wichita County Attorney	46
Wichita County Lockup	61
Wichita County Sheriff	19
Wichita Municipal Court	39
Wichita Parole Office	56
Wichita Police Chief	25
Wichita SRS Area Office	69
Wichita State University	6
Wichita State University, Campus Police	26
Wichita Work Release Center	56
Wilson County Attorney	46
Wilson County Jail	60
Wilson County Sheriff	19
Wilson Holding Facility	62
Winfield SRS Area Office	69
Winfield City Attorney	49
Winfield City Lockup	61
Winfield Municipal Court	40
Winfield Parole Office	56

Winfield Police Chief	26
Women's Crisis Center	75
Woodson County Attorney	46
Woodson County Jail	60
Woodson County Sheriff	19
Work Release Administrator	56
Wyandotte County District Attorney	46
Wyandotte County Jail	60
Wyandotte County Sheriff	19
Yates Center Police Chief	26
Youth Center at Atchison	70
Youth Center at Beloit	70
Youth Center at Topeka	70
Youth Residence Hall	63

USER EVALUATION QUESTIONNAIRE

STATISTICAL ANALYSIS CENTER
Governor's Committee on
Criminal Administration

USER EVALUATION QUESTIONNAIRE

Dear Reader:

The Statistical Analysis Center is interested in your comments and suggestions concerning this report. This form has been provided for whatever opinions you wish to provide about this report.

Thank you for your interest and assistance as every effort is made to make SAC products useful and informative to the reader.

1. For what purpose did you use this report?

2. For that purpose, the report- ☐ Met most of my needs ☐ Met some of my needs
☐ Met none of my needs

3. How will this report be useful to you?

- ☐ Data Source
☐ Teaching Material
☐ Reference for article or report
☐ General information
☐ Criminal justice program planning

Other (Please Specify) _____

Will not be useful to me
(Please explain) _____

4. Can you point out specific parts of text or tables that were not clear?

5. In what ways could the report be improved?

6. In what capacity did you use this report?

- ☐ Researcher
☐ Educator
☐ Student
☐ Criminal justice agency employee
☐ Government employee other than criminal justice (Please specify) _____
☐ Other (Specify) _____

7. If you used this report as a governmental employee, please indicate the level of government.

- ☐ Federal
☐ State
☐ County
☐ City
☐ Other (Specify) _____

8. If you used this report as a criminal justice agency employee, please indicate the sector in which you work.

- ☐ Law enforcement (police)
☐ Legal services and prosecution
☐ Public or private defense services
☐ Courts or court administration
☐ Probation
☐ Corrections
☐ Parole
☐ Criminal justice planning agency
☐ Other criminal justice agency (Specify) _____

9. If you used this report as a criminal justice employee, please indicate the type of position you hold. Mark all that apply.

- ☐ Agency or institution administrator
☐ General program planner/evaluator/analyst
☐ Operations or management planner/evaluator/analyst
☐ Program or project manager
☐ Statistician
☐ Other (Specify) _____

10. Additional Comments

END

Please return to: Director-Statistical Analysis Center
Governor's Committee on Criminal Administration
503 Kansas Avenue
Topeka, Kansas 66603