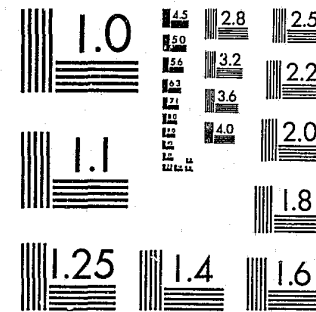


National Criminal Justice Reference Service

ncjrs

This microfiche was produced from documents received for inclusion in the NCJRS data base. Since NCJRS cannot exercise control over the physical condition of the documents submitted, the individual frame quality will vary. The resolution chart on this frame may be used to evaluate the document quality.



MICROCOPY RESOLUTION TEST CHART
NATIONAL BUREAU OF STANDARDS-1963-A

Microfilming procedures used to create this fiche comply with the standards set forth in 41CFR 101-11.504.

Points of view or opinions stated in this document are those of the author(s) and do not represent the official position or policies of the U. S. Department of Justice.

National Institute of Justice
United States Department of Justice
Washington, D. C. 20531

DATE FILMED

5/12/81

~~X~~
THE NATIONAL YOUTH SURVEY

MH 27552

LEAA 78-JN-AX-0003

Delbert S. Elliott, Principal Investigator (NIMH & LEAA)
Suzanne S. Ageton, Co-Principal Investigator (NIMH)
Brian A. Knowles, Assistant Project Director (LEAA)
Tim Brennan, Investigator (LEAA)
Rachelle J. Canter, Investigator (NIMH)
David Huizinga, Investigator (NIMH)

~~X~~
PROJECT REPORT NO. 11

~~X~~
1976 SELF-REPORTED DELINQUENCY ESTIMATES
BY SEX, RACE, CLASS AND AGE

by

D.S. ELLIOTT, S.S. AGETON, and D. HUIZINGA

December, 1980

Behavioral Research Institute
Boulder, CO

NCJRS

FEB 6 1981

ACQUISITIONS

75501

The National Youth Survey (NYS) is a longitudinal study of delinquency among American youth during the period from 1976 to 1980.¹ A major objective of the study is to provide a description of the incidence and distribution of specific delinquent acts and patterns of delinquent acts during this five year period.² The NYS involves a panel design with a national probability sample of 1,725 adolescents aged 11-17 in 1976. The total youth sample was selected and initially interviewed between January and March 1977, concerning their involvement in delinquent behavior during the calendar year 1976. The second, third, fourth and fifth surveys were conducted during this same period in successive years. Estimates of the incidence of delinquent behavior in this national youth panel are thus available for calendar years 1976 through 1980.

The Measure of Delinquent Behavior

The measure of delinquent behavior used in this study is a self-reported delinquency (SRD) measure. In the light of prior criticism of SRD measures

¹ The National Youth Survey is funded by the Center for Studies of Crime and Delinquency, NIMH (MH27552), and the National Institute for Juvenile Justice and Delinquency Prevention LEAA (78-JN-AX-0003). The first, fourth, and fifth surveys were funded by NIMH; the second and third by NIMH and LEAA jointly.

² The study also involves a test of an integrated theoretical model (Elliott, Ageton, and Canter, 1979); an analysis of changing levels of involvement and patterns of delinquency over time; a comparison of self-reported and official offenses; and a study of the relationship between delinquency and drug use.

(Hindelang et al., 1975; Nettler, 1974; Farrington, 1973; Reiss, 1975), a new SRD measure which corrected many of the deficiencies in earlier measures was developed for this study.

The measure includes a broad representative set of delinquent offenses. All UCR specific offenses (with the exception of traffic violations) involving more than 1 per cent of the reported juvenile arrests for the years 1972-1974 are included in the new measure. A number of additional items are included from those offenses reported in the "other" UCR category. These additional offenses were selected on the basis of two general criteria. First, items which were theoretically relevant to a delinquent lifestyle or subculture as discussed in the literature were selected for inclusion (Cohen, 1955; Gloward and Ohlin, 1960; Miller, 1958; 1966; Yablonsky, 1962; Short and Strodtbeck, 1965). Thus, additional items--such as gang fighting, sexual intercourse, and carrying a hidden weapon--are included. Second, a systematic review of existing SRD measures was undertaken to locate items that tapped specific dimensions of delinquent behavior not previously included.

The resulting set of items is both more comprehensive and more representative of the conceptual universe of delinquent acts than found in prior SRD measures used in major, large-scale studies.³ The basic item set

³ The initial number of offense items included in the 1977 survey was 40. In the 1978 survey, approximately half of the subjects responded to a reduced set of 26 of these original 40 items, while the remainder responded to the full set. The annual incidence estimates for 1977 are thus limited to this subset of 26 offenses which are common to all subjects. The 1979 survey included the full set of 40 offenses for all subjects. The 1980 survey included 4 new items and the 1981 survey included one more new item, bringing the total offenses in the set to 44 for calendar year 1979 and 45 for calendar year 1980.

includes all but one of the UCR Part I offenses (homicide is excluded); 60 per cent of Part II offenses; and a wide range of "other" offenses—such as delinquent lifestyle items, misdemeanors, and status offenses. The vast majority of items involve a violation of criminal statutes.

Two separate response sets are used. Respondents are initially asked to indicate how many times during the past year they committed each act. If an individual's response to this open-ended question involves a frequency of 10 or more, interviewers then ask the youth to select one of the following categorical responses: 1) once a month, 2) once every 2-3 weeks, 3) once a week, 4) 2-3 times a week, 5) once a day, or 6) 2-3 times a day.⁴ A comparison of the two response sets indicates agreement between frequency estimates given in direct response to the open-ended question and frequency estimates based upon the implied frequency associated with the midpoint of the category selected.⁵

A specific attempt was also made to eliminate as much overlap in items as possible. None of the items contains a necessary overlap as in "cutting school" and "cutting class." Although some possible overlap remains, it ought

⁴ The categorical response set has led to the identification of some highly episodic events, e.g., 20 shoplifting offenses, all occurring within a two-month period during the summer (an initial response of 20; a categorical response 2-3 times a week, and an interviewer probe revealing that the offenses all occurred during the summer).

⁵ At the upper end of the frequency continuum, estimates based upon the midpoint of the category are substantially higher than the frequency response given directly. The open-ended frequency measure thus appears to provide a more conservative estimate of number of delinquent acts, and the estimates reported here are based upon this response. The correlation between total SRD frequency scores and categorical scores for the 1977 survey was .65.

not to constitute a serious problem with this SRD measure.⁶

The SRD measure asks respondents to indicate how many times, "from Christmas a year ago to the Christmas just past," they committed each offense. The recall period is thus a year, anchored by a specific reference point relevant to most youth. The use of a one-year period which coincides almost precisely with the calendar year allows for direct comparison with UCR data, NCP victimization data, and some prior SRD data. It also avoids the need to adjust for seasonal variations.

Administration Procedure

Each of the annual surveys involves a structured interview with the respondent. An interview format was selected over the self-administered questionnaire format for several reasons. First, we share Gold's belief (Gold, 1966) that the interview situation (if properly structured to protect confidentiality) can insure more accurate data. Second, our previous research suggests that the reliability of SRD measures is comparable for these two administration forms (Elliott et al., 1976). Finally, the necessity of securing informed consents from all subjects and the complexity of the present research require, in our judgment, a personal contact with the

⁶ Two of the context specific offenses involving theft at home and school may overlap the general theft items. These two context-specific items are not included in any of our general summary measures and contribute only to the summary measures of delinquent behavior in the home and school. We are obtaining estimates of the overlap between these two items and the general theft items in the 1981 survey.

respondents. Once this contact is made, it seems logical to use the interviewer to facilitate the data collection process and to improve the quality of the data obtained.

The Sample

The National Youth Survey involves a probability sample of households in the continental United States based upon a multistage, cluster sampling design. The sample was drawn in late 1976 and contained approximately 2,375 eligible youth aged 11-17 in 1976. Of these, 1,725 (73%) agreed to participate in the study and completed interviews in the 1977 survey.⁷ An age, sex and race comparison between eligible youth not interviewed and participating youth indicates that the loss rate from any particular age, sex, or racial group appears to be proportional to that group's representation in the population. Further, with respect to these characteristics, participating youth appear to be representative of the total 11 through 17-year-old youth population in the United States as established by the U.S. Census Bureau (Huizinga, 1978).

⁷ At each stage, the probabilities of selection were established to provide a self-weighting sample. Seventy-six primary sampling units were selected, with probability of selection being proportional to size. This sampling procedure resulted in the listing of 67,266 households, of which approximately 8,000 were selected for inclusion in the sample. All 11 through 17-year-old youth living in the selected households were eligible respondents for the study. The selected households generated an estimated total of 2,375 eligible youth. Of these, 650 (27%) did not participate in the study due to (1) parental refusal, (2) youth refusal, (3) an inability to make contact with the respondent, or (4) the youth being considered inappropriate for inclusion in the study (e.g., severely mentally retarded). Based upon a comparison with 1976 U.S. Census Bureau estimates, the resulting sample of participating youth does appear representative of American youth with respect to age, sex, and race (U.S. Bureau of the Census, 1977). For a detailed description of the sample, see Huizinga, 1978.

The Calculation of Annual Incidence Estimates

Annual national incidence estimates have been calculated for the total adolescent population and for sub-populations defined by sex, SES, ethnicity, and age. These estimates are presented in the following tables. For each of these groups, both the proportion of youth reporting one or more offenses of each type and the mean number of offenses of each type are reported. For each estimate, the .95 confidence interval and design effect are also presented.⁸

Since the NYS involves a national youth panel, the relevant age range changes each year as the panel matures. In order to obtain a precise age for purposes of the age-specific estimates, age categories reflect the respondent's age at the end (i.e., Dec. 31) of each calendar year. The age range for 1976 is 11 to 17. For 1980, the age range is 15-21.

The social class measure employed in these tables is the Hollingshead two-factor index (Hollingshead and Redlich, 1958) as applied to the principal wage earner in each youth's family. Hollingshead classes 1 and 2, involving primarily professional/managerial occupations and college level educations, are collapsed to make the Class I category in the tables. Hollingshead class

⁸ By applying a uniform sampling fraction in all sample strata, a self-weighting sample was obtained. A combined ratio estimate is used for the estimates of the proportion of youth involved in each behavior. The variance of these estimates is obtained by the method of collapsed strata (Kish, 1965). Complete description of the estimation procedures are contained in Project Report No. 2: Description of the National Youth Sample (Huizinga, 1978). These proportion and variance estimates are used in the computation of the confidence intervals.

The design effect is the ratio of the actual variance to the variance of the estimate from a simple random sample of the same size. It thus indicates the extent of clustering of the delinquent behaviors in geographical areas. The confidence intervals presented here have taken into account these clustering effects.

3, primarily owners of small businesses, clerical workers and persons in sales occupations and skilled manual occupations with high school or some college completed, constitutes the Class II category. Hollingshead classes 4 and 5, primarily semiskilled persons and those in unskilled manual occupations with high school or lower levels of education, make up the Class III category.

Specific estimates (proportions and means) are presented for whites (Anglos), blacks, Hispanics and a residual "other" category. Because of the small number of Hispanic respondents (N=76) and some obvious clustering of this ethnic group, the accuracy of the variance estimates is questionable, and we have not included confidence intervals or design effects for this subgroup. The same situation holds for the "other" ethnic category (N=28). Confidence intervals and design effects are thus presented for only the white and black ethnic categories.

Figure 1 below indicates the sizes of each of the subgroups for whom incidence estimates are presented. These subgroup N's represent our base subgroup sizes and are constant across all 5 reporting years (1976-1980).

SUBGROUPS FOR INCIDENCE ESTIMATES

<u>Sex</u>		<u>Race</u>				<u>Class</u>			
Male	Female	White	Black	Hispanic	Other	I	II	III	Missing
N 918	807	1361	260	76	28	392	509	722	102
% 53.2	46.8	78.9	15.1	4.4	1.6	22.7	29.5	41.9	5.9

<u>Birth Cohorts</u>							
	1965	1964	1963	1962	1961	1960	1959
Age 1976:	11	12	13	14	15	16	17
N	252	257	269	258	253	239	197
%	14.6	14.9	15.6	15.0	14.7	13.9	11.4

Figure 1

The mean frequency estimates are based upon the open-ended frequency estimates provided by the respondents. An examination of individual responses revealed a few reports with very high frequencies. This was a source of some concern since these extreme scores, if exaggerations or falsifications, should be "corrected" or modified so as not to unfairly effect the estimates of mean frequencies. In a special review of respondents with extreme scores, all subjects reporting frequencies of 24 or greater to any SRD item were identified. Two kinds of checks were made on these respondents. First, high score offense items were examined to determine if the response seemed reasonable, unlikely, or impossible. For example, throwing objects (snowballs) 100 times a year is not an unreasonable response; but armed robbery 100 times a year, while not impossible, does appear unlikely. Second, interviewer comments relative to specific items or to the general SRD item set were examined for impressions about the validity of these responses.

Several conclusions seem warranted from this review. First, the majority of interviewer comments associated with extreme scores provided positive justification for these scores rather than suggestions or impressions about deliberate falsification or exaggeration. Second, virtually none of the responses were logically impossible. Third, many of the highest frequency responses were reasonably justified by interviewer comments (for example, a report of 400 thefts under \$5 with an interviewer comment that the respondent indicated he worked at a grocery store and stole oranges to eat on a daily basis). Finally, there was no general rule for altering extreme scores which did not appear arbitrary and likely to produce errors of underestimation. As

a result, no correction was applied to individual frequency estimates.⁹
This suggests caution in the interpretation of the mean frequency estimates particularly when the subgroup size is small, since one or two extreme scores can dramatically effect the estimate.¹⁰

⁹ In a few instances, respondents were judged to be unreliable or unresponsive on the whole set of SRD items and were assigned no scores on the SRD items. But no individual item level adjustments to reported frequencies were made. In the 1980 and 1981 surveys, follow-up questions to the SRD items were included so as to obtain descriptions of the events being reported. From these descriptions, estimates of the appropriateness or inappropriateness of the events reported in response to specific SRD items can be calculated, and general corrections for classes of subjects can be determined. Such corrections will apply to individual SRD items and will be available only for 1979 and 1980 incidence estimates.

¹⁰ In our full report of the epidemiology of delinquent behavior, we present the median and mode of the distribution in addition to the mean, so as to alert the reader to this potential problem.

REFERENCES

- Cloward, Richard A. and Lloyd E. Ohlin
1960 Delinquency and Opportunity. Glencoe, Ill.: Free Press.
- Cohen, Albert K.
1955 Delinquent Boys: The Culture of the Gang. Glencoe, Ill.: Free Press.
- Elliott, Delbert S., Suzanne S. Ageton, Margaret Hunter, and Brian Knowles
1976 Research Handbook for Community Planning and Feedback Instruments (Revised). Vol. 1. Prepared for the Office of Youth Development, Department of Health, Education and Welfare, HEW-05-74-308. Boulder: Behavioral Research and Evaluation Corporation.
- Elliott, Delbert S., Suzanne S. Ageton, and Rachelle J. Canter
1979 "An Integrated Theoretical Perspective on Delinquent Behavior." Journal of Research on Crime and Delinquency 16:3-27.
- Farrington, David P.
1973 "Self-reports of Deviant Behavior: Predictive and Stable?" Journal of Criminal Law and Criminology 64:99-110.
- Gold, Martin
1966 "Undetected Delinquent Behavior." Journal of Research in Crime and Delinquency 3:27-46.
- Hindelang, Michael J., Travis Hirschi, and Joseph G. Weis
1975 Self-Reported Delinquency: Methods and Substance. Proposal submitted to the National Institute of Mental Health, Department of Health, Education and Welfare, MH 27778.
- Hollingshead, August B., and Frederick G. Redlich
1958 Social Class and Mental Illness. New York: Wiley.
- Huizinga, David
1978 Description of the National Youth Sample. Project Report No. 2. HEW Grant No. MH27552, The Dynamics of Delinquent Behavior: A National Survey. Boulder: Behavioral Research Institute.
- Kish, Leslie
1965 Survey Sampling. New York: Wiley.
- Miller, Walter B.
1958 "Lower Class Culture as a Generating Milieu of Gang Delinquency." Journal of Social Issues 14:5-19.

- Miller, Walter B.
1966 "Violent Crimes in City Gangs." Annals of the American Academy of Political and Social Science 364:97-112.
- Nettler, Gwynn
1974 Explaining Crime. New York: McGraw-Hill.
- Reiss, Albert J., Jr.
1975 "Inappropriate Theories and Inadequate Methods as Policy Plagues: Self Reported Delinquency and the Law." Pp. 211-222 in N. J. Demarath, Jr., Otto Larson and Carl F. Schuessler (eds.), Social Policy and Sociology. New York: Academic Press.
- Short, James F., Jr., and Fred C. Strodbeck
1965 Group Process and Gang Delinquency. Chicago: University of Chicago Press.
- Yablonsky, Lewis
1962 The Violent Gang. New York: MacMillan.

SELF-REPORTED DELINQUENCY ESTIMATES - 1976

A. TOTAL ADOLESCENT POPULATION, AGED 11-17

OFFENSES	PROPORTION REPORTING ONE OR MORE OFFENSES	.95 CONFIDENCE INTERVAL	DESIGN EFFECTS	MEAN NUMBER OF OFFENSES	.95 CONFIDENCE INTERVAL	DESIGN EFFECTS
Damaged family prop.	.244	.213 - .276	2.250	.894	.500 - 1.287	.738
Damaged school prop.	.158	.138 - .179	1.326	.957	.138 - 1.776	1.008
Damaged other prop.	.177	.151 - .203	1.931	.878	.327 - 1.429	1.273
Stole motor vehicle	.009	.004 - .014	1.000	.016	.004 - .029	1.216
Stole something GT\$50	.022	.013 - .031	1.494	.060	.022 - .098	1.133
Bought stolen goods	.097	.078 - .116	1.684	.460	.213 - .706	1.211
Thrown objects	.467	.434 - .499	1.808	10.592	6.945 - 14.238	1.516
Runaway	.059	.044 - .074	1.724	.087	.060 - .114	1.565
Lied about age	.265	.238 - .293	1.597	2.795	1.402 - 4.189	1.013
Carried hidden weapon	.065	.047 - .082	2.155	.988	.203 - 1.773	1.387
Stole something LT\$5	.176	.151 - .202	1.914	1.275	.373 - 2.176	1.053
Aggravated assault	.061	.045 - .077	1.881	.170	.097 - .244	.925
Prostitution	.011	.004 - .017	1.904	.084	-0.000 - .223	1.025
Sexual intercourse	.131	.107 - .155	2.172	2.778	-1.164 - 4.392	1.247
Gang fights	.124	.105 - .144	1.435	.297	.238 - .355	1.106
Sold marijuana	.044	.031 - .057	1.647	.835	.272 - 1.398	.916
Cheated on school test	.486	.449 - .523	2.311	2.914	2.469 - 3.358	.839
Hitchhiked	.085	.066 - .104	1.889	1.218	.554 - 1.882	.755
Stolen from family	.155	.137 - .172	1.012	.699	.233 - 1.164	1.096
Hit teacher	.076	.055 - .096	2.535	.498	.045 - .950	.984
Hit parents	.062	.051 - .072	.836	1.040	-0.000 - 2.316	1.021
Hit students	.479	.447 - .511	1.714	6.014	4.139 - 7.889	.788
Disorderly conduct	.321	.290 - .351	1.811	3.127	1.721 - 4.533	1.151
Sold hard drugs	.008	.003 - .013	1.000	.207	-0.000 - .584	.997
Joyriding	.047	.037 - .058	1.043	.111	.075 - .146	.925
Liquor for minor	.048	.037 - .058	1.013	.643	.274 - 1.012	.931
Sexual assault	.016	.008 - .023	1.534	.044	.009 - .080	1.564
Strongarmed students	.030	.021 - .040	1.260	.109	.056 - .162	1.194
Strongarmed teachers	.007	.003 - .011	1.000	.067	-0.000 - .186	1.009
Strongarmed others	.030	.022 - .038	.899	.114	.050 - .177	1.451
Evaded payment	.210	.183 - .236	1.724	1.640	.892 - 2.387	1.471
Public drunkenness	.137	.120 - .155	1.099	1.242	.706 - 1.778	1.099

A. TOTAL ADOLESCENT POPULATION, AGED 11-17 (continued)

<u>OFFENSES</u>	<u>PROPORTION REPORTING ONE OR MORE OFFENSES</u>	<u>.95 CONFIDENCE INTERVAL</u>	<u>DESIGN EFFECTS</u>	<u>MEAN NUMBER OF OFFENSES</u>	<u>.95 CONFIDENCE INTERVAL</u>	<u>DESIGN EFFECTS</u>
Stole something 5-50	.056	.041 - .071	1.770	.269	.098 - .440	1.147
Stole at school	.065	.049 - .082	1.882	.317	.062 - .572	1.057
Broke into bldg/vehc	.041	.029 - .052	1.475	.131	.031 - .232	1.175
Panhandled	.029	.019 - .038	1.458	.144	.049 - .239	1.078
Skipped classes	.314	.281 - .347	2.125	4.114	2.534 - 5.693	1.920
Didn't return change	.288	.257 - .319	1.964	1.403	.488 - 2.318	2.436
Suspension	.102	.080 - .124	2.198	.265	.188 - .343	1.381
Obscene calls	.112	.092 - .132	1.720	.799	.275 - 1.323	1.216

SELF-REPORTED DELINQUENCY ESTIMATES - 1976

B. MALES, AGED 11-17

OFFENSES	PROPORTION REPORTING ONE OR MORE OFFENSES	.95 CONFIDENCE INTERVAL	DESIGN EFFECTS	MEAN NUMBER OF OFFENSES	.95 CONFIDENCE INTERVAL	DESIGN EFFECTS
Damaged family prop.	.297	.252 - .343	2.238	1.272	.449 - 2.095	.937
Damaged school prop.	.212	.184 - .240	1.056	1.619	.099 - 3.138	.985
Damaged other prop.	.245	.211 - .279	1.381	1.478	.447 - 2.509	1.273
Stole motor vehicle	.013	.004 - .022	1.502	.026	.002 - .050	1.309
Stole something GT\$50	.037	.023 - .051	1.222	.107	.037 - .177	1.108
Bought stolen goods	.130	.101 - .159	1.676	.612	.266 - .958	1.114
Thrown objects	.571	.533 - .608	1.279	14.870	9.703 - 20.037	1.260
Runaway	.064	.044 - .085	1.571	.095	.060 - .131	1.216
Lied about age	.273	.247 - .299	.769	2.942	1.720 - 4.164	.989
Carried hidden weapon	.103	.074 - .132	2.047	1.817	.356 - 3.279	1.368
Stole something LT\$5	.220	.186 - .254	1.494	2.007	.333 - 3.680	1.036
Aggravated assault	.087	.063 - .111	1.619	.277	.149 - .404	.819
Prostitution	.014	.005 - .024	1.444	.143	-0.000 - .400	.995
Sexual intercourse	.183	.150 - .217	1.671	3.424	.894 - 5.955	1.046
Gang fights	.169	.143 - .196	1.101	.420	.320 - .519	1.092
Sold marijuana	.055	.037 - .073	1.420	1.311	.281 - 2.341	.927
Cheated on school test	.500	.457 - .543	1.625	2.975	2.339 - 3.611	.836
Hitchhiked	.122	.096 - .148	1.402	2.162	.936 - 3.389	.733
Stolen from family	.174	.147 - .201	1.120	.467	.344 - .589	.869
Hit teacher	.097	.068 - .127	2.183	.802	-0.000 - 1.651	1.003
Hit parents	.062	.046 - .079	1.036	1.809	-0.000 - 4.207	1.023
Hit students	.629	.597 - .662	1.008	8.641	5.636 - 11.647	.860
Disorderly conduct	.350	.312 - .388	1.430	4.613	2.006 - 7.219	1.142
Sold hard drugs	.010	.002 - .017	1.234	.367	-0.000 - 1.078	1.002
Joyriding	.064	.049 - .080	.886	.150	.097 - .202	.748
Liquor for minor	.059	.045 - .073	.783	.764	.349 - 1.179	1.017
Sexual assault	.024	.013 - .036	1.260	.075	.011 - .138	1.474
Strongarmed students	.049	.035 - .063	.964	.189	.095 - .283	1.106
Strongarmed teachers	.009	.003 - .015	1.000	.119	-0.000 - .341	1.002
Strongarmed others	.039	.027 - .052	.882	.176	.060 - .292	1.473
Evaded payment	.263	.229 - .297	1.338	2.274	1.235 - 3.312	1.599
Public drunkenness	.158	.131 - .186	1.251	1.614	.764 - 2.465	1.172

B. MALES, AGED 11-17 (continued)

<u>OFFENSES</u>	<u>PROPORTION REPORTING ONE OR MORE OFFENSES</u>	<u>.95 CONFIDENCE INTERVAL</u>	<u>DESIGN EFFECTS</u>	<u>MEAN NUMBER OF OFFENSES</u>	<u>.95 CONFIDENCE INTERVAL</u>	<u>DESIGN EFFECTS</u>
Stole something \$5-50	.074	.053 - .096	1.499	.291	.118 - .464	1.412
Stole at school	.081	.059 - .103	1.447	.505	.034 - .976	1.025
Broke into bldg/vehicle	.062	.045 - .080	1.210	.223	.036 - .410	1.160
Panhandled	.034	.021 - .047	1.158	.209	.035 - .382	1.094
Skipped classes	.340	.302 - .377	1.424	5.423	2.715 - 8.131	1.804
Didn't return change	.333	.291 - .374	1.721	1.598	.626 - 2.571	1.417
Suspension	.133	.099 - .166	2.191	.336	.208 - .464	1.784
Obscene calls	.114	.089 - .139	1.400	.769	.394 - 1.145	1.025

SELF-REPORTED DELINQUENCY ESTIMATES - 1976

C. FEMALES, AGED 11-17

OFFENSES	PROPORTION REPORTING ONE OR MORE OFFENSES	.95 CONFIDENCE INTERVAL	DESIGN EFFECTS	MEAN NUMBER OF OFFENSES	.95 CONFIDENCE INTERVAL	DESIGN EFFECTS
Damaged family prop.	.184	.157 - .212	.992	.463	.284 - .641	1.361
Damaged school prop.	.097	.076 - .118	.953	.204	.144 - .264	1.222
Damaged other prop.	.100	.075 - .124	1.370	.195	.119 - .272	1.125
Stole motor vehicle	.005	-0.000 - .011	1.000	.005	-0.000 - .011	1.000
Stole something GT\$50	.005	-0.000 - .010	1.000	.006	-0.000 - .013	1.023
Bought stolen goods	.060	.039 - .080	1.429	.286	-0.000 - .583	.973
Thrown objects	.348	.308 - .388	1.387	5.734	2.181 - 9.286	1.012
Runaway	.052	.035 - .069	1.152	.078	.046 - .111	1.309
Lied about age	.257	.213 - .301	1.989	2.628	-0.000 - 5.327	1.069
Carried hidden weapon	.021	.009 - .033	1.410	.044	.010 - .077	.942
Stole something LT\$5	.127	.095 - .158	1.748	.442	.258 - .625	1.358
Aggravated assault	.031	.016 - .046	1.411	.050	.022 - .077	1.281
Prostitution	.006	-0.000 - .013	1.402	.016	-0.000 - .040	1.222
Sexual intercourse	.072	.049 - .094	1.514	2.044	.410 - 3.678	1.627
Gang fights	.073	.054 - .093	1.124	.157	.107 - .206	1.122
Sold marijuana	.032	.017 - .048	1.474	.294	-0.000 - .610	1.023
Cheated on school test	.470	.425 - .515	1.602	2.844	2.184 - 3.504	.970
Hitchhiked	.044	.024 - .063	1.792	.147	.061 - .232	1.424
Stolen from family	.133	.108 - .158	1.055	.963	.006 - 1.920	1.040
Hit teacher	.051	.032 - .070	1.492	.152	.018 - .286	.982
Hit parents	.061	.043 - .079	1.135	.165	.053 - .277	1.085
Hit students	.309	.268 - .349	1.497	3.030	.651 - 5.408	.840
Disorderly conduct	.287	.244 - .331	1.807	1.438	1.068 - 1.807	1.060
Sold hard drugs	.006	.001 - .012	1.000	.024	-0.000 - .055	.991
Joyriding	.027	.017 - .038	.868	.066	.028 - .104	.994
Liquor for minor	.035	.018 - .051	1.558	.505	-0.000 - 1.176	1.001
Sexual assault	.006	.001 - .012	1.000	.010	.000 - .020	.973
Strongarmed students	.009	.001 - .016	1.306	.017	-0.000 - .035	1.259
Strongarmed teachers	.005	-0.000 - .010	1.000	.007	-0.000 - .015	1.007
Strongarmed others	.020	.010 - .030	1.000	.042	.011 - .073	.047
Evaded payment	.149	.119 - .179	1.410	.919	.076 - 1.762	.828
Public drunkenness	.113	.086 - .140	1.436	.818	.122 - 1.515	1.224

C. FEMALES, AGED 11-17 (continued)

<u>OFFENSES</u>	<u>PROPORTION REPORTING ONE OR MORE OFFENSES</u>	<u>.95 CONFIDENCE INTERVAL</u>	<u>DESIGN EFFECTS</u>	<u>MEAN NUMBER OF OFFENSES</u>	<u>.95 CONFIDENCE INTERVAL</u>	<u>DESIGN EFFECTS</u>
Stole something 5-50	.035	.020 - .050	1.337	.244	-0.000 - .538	.964
Stole at school	.047	.031 - .064	1.207	.103	.062 - .145	1.107
Broke into bldg/vehc	.016	.006 - .026	1.301	.027	.006 - .049	1.390
Panhandled	.022	.009 - .036	1.556	.070	.017 - .122	1.097
Skipped classes	.286	.243 - .329	1.777	2.623	1.720 - 3.527	1.247
Didn't return change	.238	.206 - .269	1.081	1.181	.291 - 2.070	1.118
Suspension	.067	.047 - .088	1.353	.185	.092 - .277	1.090
Obscene calls	.109	.087 - .132	.984	.833	-0.000 - 1.771	1.029

SELF-REPORTED DELINQUENCY ESTIMATES - 1976

D. WHITES, AGED 11-17

OFFENSES	PROPORTION REPORTING ONE OR MORE OFFENSES	.95 CONFIDENCE INTERVAL	DESIGN EFFECTS	MEAN NUMBER OF OFFENSES	.95 CONFIDENCE INTERVAL	DESIGN EFFECTS
Damaged family prop.	.242	.208 - .275	2.001	.655	.450 - .860	1.240
Damaged school prop.	.167	.142 - .192	1.493	.674	.205 - 1.143	1.028
Damaged other prop.	.184	.154 - .215	2.068	.707	.403 - 1.012	1.163
Stole motor vehicle	.007	.001 - .013	1.000	.015	-0.000 - .031	1.317
Stole something GT\$50	.021	.012 - .029	1.271	.067	.019 - .115	1.141
Bought stolen goods	.098	.074 - .122	2.133	.528	.207 - .849	1.292
Thrown objects	.485	.446 - .523	1.958	9.494	5.986 - 13.002	1.283
Runaway	.061	.046 - .076	1.284	.093	.063 - .123	1.347
Lied about age	.270	.242 - .297	1.290	2.379	1.539 - 3.219	1.114
Carried hidden weapon	.054	.036 - .071	1.979	1.114	.118 - 2.111	1.427
Stole something LT\$5	.189	.156 - .221	2.282	1.506	.373 - 2.639	1.040
Aggravated assault	.057	.038 - .075	2.065	.116	.067 - .165	1.525
Prostitution	.004	.000 - .009	1.000	.092	-0.000 - .268	1.024
Sexual intercourse	.107	.082 - .132	2.145	2.591	.540 - 4.641	1.333
Gang fights	.119	.098 - .141	1.490	.272	.201 - .344	1.597
Sold marijuana	.046	.031 - .060	1.550	.754	.240 - 1.269	1.028
Cheated on school test	.507	.464 - .549	2.364	3.098	2.531 - 3.665	.988
Hitchhiked	.085	.062 - .109	2.315	1.296	.338 - 2.253	1.058
Stolen from family	.170	.146 - .194	1.318	.549	.402 - .696	1.043
Hit teacher	.066	.045 - .087	2.399	.497	-0.000 - 1.054	.967
Hit parents	.071	.057 - .084	.883	1.301	-0.000 - 2.901	1.009
Hit students	.476	.442 - .509	1.472	5.349	3.567 - 7.132	.807
Disorderly conduct	.341	.307 - .375	1.727	3.046	1.563 - 4.530	1.207
Sold hard drugs	.006	.001 - .011	1.000	.257	-0.000 - .735	.995
Joyriding	.049	.036 - .061	1.174	.124	.081 - .167	.896
Liquor for minor	.049	.037 - .060	.941	.753	.293 - 1.212	.925
Sexual assault	.012	.006 - .017	1.000	.025	.010 - .040	.886
Strongarmed students	.024	.014 - .033	1.195	.103	.040 - .165	1.158
Strongarmed teachers	.004	.000 - .007	1.000	.077	-0.000 - .227	1.010
Strongarmed others	.027	.019 - .034	.707	.097	.048 - .146	.850
Evaded payment	.201	.171 - .231	1.896	.944	.584 - 1.304	1.147
Public drunkenness	.158	.133 - .182	1.453	1.432	.754 - 2.111	1.175

D. WHITES, AGED 11-17 (continued)

<u>OFFENSES</u>	<u>PROPORTION REPORTING ONE OR MORE OFFENSES</u>	<u>.95 CONFIDENCE INTERVAL</u>	<u>DESIGN EFFECTS</u>	<u>MEAN NUMBER OF OFFENSES</u>	<u>.95 CONFIDENCE INTERVAL</u>	<u>DESIGN EFFECTS</u>
Stole something \$5-50	.057	.039 - .074	1.936	.307	.091 - .522	1.149
Stole at school	.064	.046 - .083	1.834	.334	.019 - .649	1.044
Broke into bldg/vehicle	.040	.026 - .053	1.616	.136	.010 - .262	1.190
Panhandled	.027	.017 - .037	1.297	.156	.035 - .277	1.121
Skipped classes	.315	.278 - .353	2.183	4.007	2.706 - 5.309	1.524
Didn't return change	.273	.241 - .304	1.660	.764	.618 - .910	1.273
Suspension	.076	.055 - .097	2.122	.216	.125 - .308	1.515
Obscene calls	.111	.089 - .134	1.703	.902	.239 - 1.565	1.233

SELF-REPORTED DELINQUENCY ESTIMATES - 1976

E. BLACKS, AGED 11-17

OFFENSES	PROPORTION REPORTING ONE OR MORE OFFENSES	.95 CONFIDENCE INTERVAL	DESIGN EFFECTS	MEAN NUMBER OF OFFENSES	.95 CONFIDENCE INTERVAL	DESIGN EFFECTS
Damaged family prop.	.255	.167 - .343	2.577	2.309	-0.000 - 4.719	.699
Damaged school prop.	.112	.065 - .159	1.386	2.622	-0.000 - 7.426	.985
Damaged other prop.	.139	.090 - .188	1.255	1.950	-0.000 - 5.273	1.331
Stole motor vehicle	.019	.005 - .033	.651	.023	.005 - .042	.715
Stole something GT\$50	.031	.009 - .053	1.053	.039	.009 - .068	1.025
Bought stolen goods	.104	.067 - .141	.938	.212	.084 - .340	.994
Thrown objects	.421	.355 - .487	1.136	19.792	4.881 - 34.702	1.841
Runaway	.054	.014 - .094	1.983	.066	.015 - .117	1.942
Lied about age	.270	.176 - .365	2.871	5.892	-0.000 - 13.584	.884
Carried hidden weapon	.097	.057 - .136	1.127	.375	-0.000 - .810	1.880
Stole something LT\$5	.124	.075 - .172	1.368	.332	.137 - .527	.815
Aggravated assault	.093	.061 - .125	.769	.502	.025 - .979	1.084
Prostitution	.043	.010 - .075	1.667	.070	.010 - .130	.802
Sexual intercourse	.261	.203 - .319	1.091	4.704	2.474 - 6.935	.928
Gang fights	.135	.078 - .192	1.778	.382	.170 - .595	1.106
Sold marijuana	.039	.013 - .064	1.082	1.537	-0.000 - 4.133	.828
Cheated on school test	.394	.310 - .477	1.841	2.452	1.122 - 3.781	1.323
Hitchhiked	.089	.047 - .130	1.356	1.181	-0.000 - 2.714	1.295
Stolen from family	.085	.050 - .119	.971	1.583	-0.000 - 4.514	1.057
Hit teacher	.124	.073 - .174	1.505	.633	-0.000 - 1.301	1.309
Hit parents	.008	-0.000 - .019	.977	.042	-0.000 - .121	.990
Hit students	.514	.433 - .595	1.661	10.961	1.070 - 20.853	1.114
Disorderly conduct	.228	.160 - .296	1.694	4.274	-0.000 - 9.228	.969
Sold hard drugs	.008	-0.000 - .023	1.970	.008	-0.000 - .023	1.962
Joyriding	.035	.013 - .057	.932	.039	.011 - .066	1.083
Liquor for minor	.042	.009 - .076	1.714	.097	.015 - .178	1.741
Sexual assault	.027	.009 - .045	.791	.147	-0.000 - .311	.946
Strongarmed students	.062	.032 - .092	.975	.143	.068 - .217	.773
Strongarmed teachers	.015	-0.000 - .033	1.313	.023	-0.000 - .050	1.176
Strongarmed others	.031	.009 - .053	1.019	.116	-0.000 - .266	1.739
Evaded payment	.251	.174 - .328	2.007	5.000	1.209 - 8.791	1.137
Public drunkenness	.062	.034 - .090	.872	.668	-0.000 - 1.440	.800

E. BLACKS, AGED 11-17 (continued)

<u>OFFENSES</u>	<u>PROPORTION REPORTING ONE OR MORE OFFENSES</u>	<u>.95 CONFIDENCE INTERVAL</u>	<u>DESIGN EFFECTS</u>	<u>MEAN NUMBER OF OFFENSES</u>	<u>.95 CONFIDENCE INTERVAL</u>	<u>DESIGN EFFECTS</u>
Stole something \$5-50	.046	.019 - .073	1.046	.135	.021 - .249	1.187
Stole at school	.069	.020 - .119	2.383	.293	-0.000 - .636	1.135
Broke into bldg/vehicle	.046	.018 - .075	1.159	.139	.019 - .259	1.232
Panhandled	.031	.010 - .052	.965	.089	.012 - .166	.859
Skipped classes	.274	.203 - .345	1.587	4.499	-0.000 - 9.666	1.083
Didn't return change	.351	.274 - .429	1.679	4.931	-0.000 - 10.634	2.251
Suspension	.220	.146 - .294	2.009	.471	.320 - .622	.878
Obscene calls	.108	.060 - .156	1.535	.448	.087 - .809	.905

SELF-REPORTED DELINQUENCY ESTIMATES - 1976

G. OTHER ETHNNICITY, AGED 11-17

OFFENSES	PROPORTION REPORTING ONE OR MORE OFFENSES	.95 CONFIDENCE INTERVAL	DESIGN EFFECTS	MEAN NUMBER OF OFFENSES	.95 CONFIDENCE INTERVAL	DESIGN EFFECTS
Damaged family prop.	.148	.025 - .271	.787	.370	.007 - .734	.748
Damaged school prop.	.148	-0.000 - .320	1.548	.481	-0.000 - 1.195	1.720
Damaged other prop.	.185	.010 - .361	1.349	.630	-0.000 - 1.541	1.691
Stole motor vehicle	0.000	0.000 - 0.000	1.000	0.000	0.000 - 0.000	1.000
Stole something GT\$50	0.000	0.000 - 0.000	1.000	0.000	0.000 - 0.000	1.000
Bought stolen goods	.074	-0.000 - .175	.982	.185	-0.000 - .439	.917
Thrown objects	.333	.104 - .562	1.556	2.889	-0.000 - 6.829	1.068
Runaway	.037	-0.000 - .113	1.068	.111	-0.000 - .339	1.029
Lied about age	.115	.008 - .223	.719	.308	-.014 - .601	.701
Carried Hidden Weapon	.074	-0.000 - .167	.822	2.815	-0.000 - 8.079	.878
Stole something Lt\$5	.148	.019 - .277	.874	1.111	-0.000 - 2.798	.870
Aggravated assault	.037	-0.000 .107	.915	.074	-0.000 - .215	.881
Prostitution	0.000	0.000 - 0.000	1.000	0.000	0.000 - 0.000	1.000
Sexual intercourse	.111	-0.000 - .232	.972	.333	-0.000 - .827	.869
Gang fights	.185	-0.000 - .380	1.659	.370	-0.000 - .804	1.139
Sold marijuana	.037	-0.000 - .113	1.069	.111	-0.000 - .339	1.028
Cheated on sch. test	.259	.107 - .411	.794	1.370	-0.000 - 2.927	.641
Hitchhiked	.111	-0.000 - .268	1.639	.778	-0.000 - 1.997	.994
Stolen from family	.037	-0.000 .113	1.068	.074	-0.000 - .226	1.029
Hit teacher	.037	-0.000 - .107	.915	.037	-0.000 - .107	.881
Hit parents	.037	-0.000 - .113	1.068	.037	-0.000 - .113	1.029
Hit students	.481	.265 - .698	1.244	2.778	-0.000 - 5.775	1.290
Disorderly conduct	.222	.070 - .375	.889	.556	.059 - 1.052	1.094
Sold hard drugs	0.000	0.000 - 0.000	1.000	0.000	0.000 - 0.000	1.000
Joyriding	.037	-0.000 - .113	1.068	.185	-0.000 - .565	1.029
Liquor for minor	.074	-0.000 - .175	.982	.111	-0.000 - .276	.994
Sexual assault	.037	-0.000 - .107	.915	.037	-0.000 - .107	.881
Strongarmed students	.074	-0.000 - .175	.982	.296	-0.000 - .791	.880
Strongarmed teachers	0.000	0.000 - 0.000	1.000	0.000	0.000 - 0.000	1.000
Strongarmed others	.074	-0.000 - .175	.982	.889	-0.000 - 2.504	.880
Evaded payment	.185	.042 - .328	.895	.740	.117 - 1.464	.794
Public drunkenness	.037	-0.000 - .113	1.068	.037	-0.000 - .113	1.029

G. OTHER ETHNICITY, AGED 11-17 (continued)

<u>OFFENSES</u>	<u>PROPORTION REPORTING ONE OR MORE OFFENSES</u>	<u>.95 CONFIDENCE INTERVAL</u>	<u>DESIGN EFFECTS</u>	<u>MEAN NUMBER OF OFFENSES</u>	<u>.95 CONFIDENCE INTERVAL</u>	<u>DESIGN EFFECTS</u>
Stole something 5-50	.074	-0.000 - .175	.982	.074	-0.000 - .175	.946
Stole at school	.111	.013 - .209	.639	.222	.011 - .433	.603
Broke into bldg/vehc	.037	-0.000 - .113	1.068	.074	-0.000 - .226	1.029
Panhandled	.074	-0.000 - .175	.982	.333	-0.000 - .877	1.014
Skipped classes	.370	.179 - .562	1.034	3.815	-0.000 - 9.895	1.041
Didn't return change	.148	-0.000 - .312	1.396	.370	-0.000 - .843	1.266
Suspension	.037	-0.000 - .107	.915	.037	-0.000 - .107	.881
Obscene calls	.111	-0.000 - .268	1.639	.259	-0.000 - .621	1.170

SELF-REPORTED DELINQUENCY ESTIMATES - 1976

H. CLASS I, AGED 11-17

OFFENSES	PROPORTION REPORTING ONE OR MORE OFFENSES	.95 CONFIDENCE INTERVAL	DESIGN EFFECTS	MEAN NUMBER OF OFFENSES	.95 CONFIDENCE INTERVAL	DESIGN EFFECTS
Damaged family prop.	.244	.199 - .290	1.963	1.099	.184 - 2.013	.774
Damaged school prop.	.157	.126 - .188	1.273	1.622	-0.000 - 3.571	1.014
Damaged other prop.	.171	.138 - .204	1.341	1.006	-0.000 - 2.199	1.313
Stole motor vehicle	.008	.001 - .016	1.191	.010	.001 - .019	1.101
Stole something GT\$50	.025	.014 - .036	.857	.042	.022 - .062	.605
Bought stolen goods	.107	.076 - .138	1.736	.451	.043 - .859	1.437
Thrown objects	.433	.384 - .482	1.713	12.375	6.303 - 18.446	1.303
Runaway	.067	.046 - .087	1.212	.090	.054 - .126	1.413
Lied about age	.251	.210 - .293	1.639	3.853	-.601 - 7.104	1.046
Carried Hidden Weapon	.083	.055 - .112	1.893	1.804	-.061 - 3.547	1.276
Stole something Lt\$5	.164	.125 - .203	1.970	1.881	-0.000 - 3.983	1.048
Aggravated assault	.082	.059 - .105	1.195	.286	.133 - .439	.793
Prostitution	.015	.004 - .027	1.527	.180	-0.000 - .516	1.046
Sexual intercourse	.150	.122 - .179	1.120	2.581	1.089 - 4.073	1.535
Gang fights	.144	.116 - .173	1.135	.342	.262 - .421	.937
Sold marijuana	.039	.024 - .054	1.063	.768	-0.000 - 1.829	.967
Cheated on sch. test	.474	.425 - .524	1.722	2.865	1.926 - 3.803	1.367
Hitchhiked	.093	.064 - .122	1.738	1.093	.256 - 1.931	1.081
Stolen from family	.146	.114 - .177	1.393	.925	-0.000 - 1.995	1.060
Hit teacher	.099	.064 - .134	2.400	.467	.077 - .856	1.211
Hit parents	.058	.042 - .075	.859	1.640	-0.000 - 4.492	1.022
Hit students	.524	.478 - .569	1.444	8.741	4.159 - 13.323	1.054
Disorderly conduct	.292	.251 - .333	1.410	2.730	.560 - 4.901	1.187
Sold hard drugs	.008	.000 - .016	1.342	.453	0.000 - 1.364	1.021
Joyriding	.053	.035 - .071	1.146	.142	.064 - .219	1.067
Liquor for minor	.047	.030 - .064	1.138	.786	-0.000 - 1.587	.955
Sexual assault	.024	.009 - .039	1.699	.081	0.000 - 1.618	1.545
Strongarmed students	.042	.026 - .058	1.098	.108	.052 - .165	1.069
Strongarmed teachers	.011	.003 - .019	1.067	.153	-0.000 - .437	1.011
Strongarmed others	.040	.023 - .058	1.383	.170	.031 - .309	1.573
Evaded payment	.214	.179 - .250	1.328	1.592	.779 - 2.406	1.086
Public drunkenness	.126	.096 - .156	1.427	1.404	.339 - 2.470	.990

W. CLASS I, AGED 11-17 (continued)

<u>OFFENSES</u>	<u>PROPORTION REPORTING ONE OR MORE OFFENSES</u>	<u>.95 CONFIDENCE INTERVAL</u>	<u>DESIGN EFFECTS</u>	<u>MEAN NUMBER OF OFFENSES</u>	<u>.95 CONFIDENCE INTERVAL</u>	<u>DESIGN EFFECTS</u>
Stole something 5-50	.054	.035 - .074	1.303	.293	-0.000 - .628	1.003
Stole at school	.068	.045 - .092	1.549	.467	-0.000 - 1.049	1.018
Broke into bldg/vehc	.040	.023 - .058	1.402	.090	.041 - .139	.998
Panhandled	.029	.013 - .045	1.591	.164	-0.000 - .343	1.029
Skipped classes	.307	.264 - .350	1.516	4.530	2.295 - 6.765	.995
Didn't return change	.304	.251 - .356	2.284	2.015	.043 - 3.988	2.096
Suspension	.124	.096 - .152	1.292	.312	.218 - .407	.919
Obscene calls	.113	.082 - .143	1.645	.738	.330 - 1.145	.900

SELF-REPORTED DELINQUENCY ESTIMATES - 1976

I. CLASS II, AGED 11-17

OFFENSES	PROPORTION REPORTING ONE OR MORE OFFENSES	.95 CONFIDENCE INTERVAL	DESIGN EFFECTS	MEAN NUMBER OF OFFENSES	.95 CONFIDENCE INTERVAL	DESIGN EFFECTS
Damaged family prop.	.272	.224 - .319	1.429	1.002	.505 - 1.499	1.086
Damaged school prop.	.175	.132 - .218	1.583	.604	.257 - .952	1.346
Damaged other prop.	.195	.146 - .244	1.904	1.118	.349 - 1.887	1.105
Stole motor vehicle	.068	-0.000 - .019	2.070	.022	-0.000 - .058	1.270
Stole something GT\$50	.026	.006 - .046	1.977	.120	-0.000 - .244	1.193
Bought stolen goods	.089	.051 - .126	2.153	.681	.046 - 1.316	1.239
Thrown objects	.474	.420 - .529	1.487	12.388	5.905 - 18.871	1.123
Runaway	.063	.038 - .088	1.280	.108	.051 - .166	1.209
Lied about age	.270	.224 - .317	1.367	2.268	1.072 - 3.464	1.109
Carried Hidden Weapon	.069	.044 - .094	1.232	.541	.055 - 1.027	1.114
Stole something Lt\$5	.161	.115 - .208	1.947	.951	.264 - 1.638	1.445
Aggravated assault	.057	.028 - .086	1.890	.102	.036 - .169	1.627
Prostitution	.006	-0.000 - .015	1.668	.006	-0.000 - .015	1.664
Sexual intercourse	.109	.071 - .146	1.783	2.466	-0.000 - 5.682	2.396
Gang fights	.128	.085 - .171	2.029	.354	.218 - .491	1.010
Sold marijuana	.043	.019 - .067	1.728	.711	.117 - 1.304	1.197
Cheated on sch. test	.490	.449 - .531	.839	2.382	1.759 - 3.004	1.154
Hitchhiked	.085	.056 - .113	1.290	2.239	-0.000 - 4.583	1.036
Stolen from family	.161	.125 - .198	1.243	.457	.299 - .614	1.292
Hit teacher	.071	.042 - .100	1.576	.904	-0.000 - 2.357	.997
Hit parents	.059	.031 - .087	1.730	1.008	-0.000 - 2.535	1.028
Hit students	.480	.431 - .530	1.207	5.394	2.913 - 7.875	.609
Disorderly conduct	.325	.282 - .367	1.021	4.106	.749 - 7.463	1.043
Sold hard drugs	.012	.001 - .023	1.275	.031	-0.000 - .064	1.011
Joyriding	.041	.021 - .062	1.298	.104	.040 - .168	1.351
Liquor for minor	.033	.015 - .052	1.255	.618	.139 - 1.098	.908
Sexual assault	.006	-0.000 - .013	1.001	.006	-0.000 - .013	.999
Strongarmed students	.031	.013 - .050	1.340	.189	.036 - .342	1.171
Strongarmed teachers	.004	-0.000 - .010	1.000	.004	-0.000 - .010	1.000
Strongarmed others	.024	.011 - .037	.911	.094	.029 - .160	.780
Evaded payment	.191	.152 - .230	1.214	1.128	.559 - 1.697	1.187
Public drunkenness	.136	.104 - .167	1.053	1.368	.348 - 2.388	1.746

1. CLASS II, AGED 11-17 (continued)

<u>OFFENSES</u>	<u>PROPORTION REPORTING ONE OR MORE OFFENSES</u>	<u>.95 CONFIDENCE INTERVAL</u>	<u>DESIGN EFFECTS</u>	<u>MEAN NUMBER OF OFFENSES</u>	<u>.95 CONFIDENCE INTERVAL</u>	<u>DESIGN EFFECTS</u>
Stole something 5-50	.067	.036 - .098	1.961	.372	.039 - .705	1.745
Stole at school	.083	.051 - .114	1.625	.343	.123 - .562	1.233
Broke into bldg/vehc	.035	.013 - .058	1.858	.248	-0.000 - .575	1.158
Panhandled	.028	.010 - .045	1.355	.094	-0.000 - .195	1.241
Skipped classes	.311	.261 - .361	1.424	3.671	2.106 - 5.237	1.465
Didn't return change	.268	.218 - .317	1.544	1.132	.773 - 1.490	.864
Suspension	.089	.055 - .122	1.705	.266	.076 - .455	1.702
Obscene calls	.114	.081 - .148	1.374	1.120	-0.000 - 2.697	1.164

SELF-REPORTED DELINQUENCY ESTIMATES - 1976

J. CLASS III, AGED 11-17

OFFENSES	PROPORTION REPORTING ONE OR MORE OFFENSES	.95 CONFIDENCE INTERVAL	DESIGN EFFECTS	MEAN NUMBER OF OFFENSES	.95 CONFIDENCE INTERVAL	DESIGN EFFECTS
Damaged family prop.	.202	.153 - .251	1.440	.396	.276 - .516	1.370
Damaged school prop.	.130	.085 - .176	1.751	.312	.168 - .456	1.399
Damaged other prop.	.153	.118 - .189	.924	.417	.262 - .572	.975
Stole motor vehicle	.008	-0.000 - .016	.892	.013	-0.000 - .027	.886
Stole something GT\$50	.010	0.000 - .020	.956	.020	-0.000 - .044	.943
Bought stolen goods	.079	.049 - .109	1.186	.240	.076 - .404	.914
Thrown objects	.529	.476 - .583	1.102	5.887	3.119 - 8.656	.914
Runaway	.036	.011 - .061	1.763	.049	.014 - .084	1.519
Lied about age	.274	.222 - .325	1.266	1.691	1.170 - 2.211	.673
Carried Hidden Weapon	.015	.003 - .027	.892	.284	-0.000 - .652	.973
Stole something Lt\$5	.197	.144 - .250	1.694	.726	.415 - 1.038	1.467
Aggravated assault	.026	.010 - .042	.978	.033	.011 - .055	.975
Prostitution	0.000	0.000 - 0.000	1.000	0.000	0.000 - 0.000	1.000
Sexual intercourse	.078	.046 - .109	1.339	.674	.037 - 1.312	.958
Gang fights	.079	.053 - .106	.919	.148	.086 - .211	.930
Sold marijuana	.046	.022 - .070	1.282	.562	-0.000 - 1.178	.928
Cheated on sch. test	.499	.427 - .570	1.956	3.770	2.206 - 5.334	1.492
Hitchhiked	.059	.025 - .093	1.998	.207	.063 - .351	1.337
Stolen from family	.169	.128 - .209	1.115	.701	.373 - 1.028	.877
Hit teacher	.033	.017 - .049	.771	.069	.021 - .117	.910
Hit parents	.079	.054 - .105	.868	.235	.008 - .463	1.140
Hit students	.390	.337 - .443	1.133	2.595	1.395 - 3.795	1.103
Disorderly conduct	.376	.312 - .440	1.654	2.325	1.508 - 3.142	1.250
Sold hard drugs	.003	-0.000 - .008	1.000	.031	-0.000 - .092	.974
Joyriding	.036	.018 - .054	.885	.061	.024 - .099	.944
Liquor for minor	.059	.033 - .084	1.112	.524	.152 - .896	1.117
Sexual assault	.008	-0.000 - .016	.923	.010	-0.000 - .023	.941
Strongarmed students	.010	-0.000 - .020	.992	.015	-0.000 - .032	.983
Strongarmed teachers	.003	-0.000 - .008	1.000	.003	-0.000 - .008	1.000
Strongarmed others	.018	.004 - .031	.998	.036	.004 - .068	.971
Evaded payment	.212	.169 - .255	1.066	.964	.553 - 1.375	1.176
Public drunkenness	.159	.116 - .201	1.302	.875	.476 - 1.273	1.330

J. CLASS III, AGED 11-17 (continued)

<u>OFFENSES</u>	<u>PROPORTION REPORTING ONE OR MORE OFFENSES</u>	<u>.95 CONFIDENCE INTERVAL</u>	<u>DESIGN EFFECTS</u>	<u>MEAN NUMBER OF OFFENSES</u>	<u>.95 CONFIDENCE INTERVAL</u>	<u>DESIGN EFFECTS</u>
Stole something 5-50	.041	.016 - .066	1.521	.110	.024 - .196	1.018
Stole at school	.033	.008 - .058	1.832	.041	.009 - .073	1.825
Broke into bldg/vehc	.043	.016 - .071	1.745	.064	.020 - .108	1.486
Panhandled	.026	.007 - .044	1.283	.184	-0.000 - .401	1.134
Skipped classes	.292	.240 - .343	1.232	3.583	.799 - 6.367	1.683
Didn't return change	.274	.224 - .324	1.203	.673	.464 - .882	1.188
Suspension	.038	.017 - .060	1.222	.066	.023 - .110	1.264
Obscene calls	.113	.079 - .146	1.052	.560	.278 - .842	.876

SELF-REPORTED DELINQUENCY ESTIMATES - 1976

K. ELEVEN YEAR OLDS

OFFENSES	PROPORTION REPORTING ONE OR MORE OFFENSES	.95 CONFIDENCE INTERVAL	DESIGN EFFECTS	MEAN NUMBER OF OFFENSES	.95 CONFIDENCE INTERVAL	DESIGN EFFECTS
Damaged family prop.	.280	.221 - .339	1.062	.860	.352 - 1.368	1.134
Damaged school prop.	.076	.040 - .112	1.111	.168	.062 - .274	1.563
Damaged other prop.	.141	.091 - .190	1.218	.406	.217 - .595	.724
Stole motor vehicle	0.000	0.000 - 0.000	1.000	0.000	0.000 - 0.000	1.000
Stole something GT\$50	.004	-0.000 - .012	.996	.008	-0.000 - .024	.992
Bought stolen goods	.032	.005 - .059	1.485	.064	-0.000 - .131	1.552
Thrown objects	.430	.354 - .505	1.423	12.193	.859 - 23.527	1.012
Runaway	.036	.013 - .059	.931	.040	.015 - .065	.791
Lied about age	.072	.037 - .107	1.114	.276	-0.000 - .570	1.305
Carried Hidden Weapon	.020	.002 - .038	.964	.032	.003 - .061	.959
Stole something Lt\$5	.084	.041 - .127	1.502	.196	.047 - .345	1.462
Aggravated assault	.024	.004 - .044	.993	.044	.006 - .082	.975
Prostitution	.004	-0.000 - .012	.972	.004	-0.000 - .012	.967
Sexual intercourse	.008	-0.000 - .020	.959	.012	-0.000 - .030	.959
Gang fights	.140	.084 - .196	1.596	.268	.145 - .391	1.419
Sold marijuana	0.000	0.000 - 0.000	1.000	0.000	0.000 - 0.000	1.000
Cheated on sch. test	.312	.249 - .375	1.114	.872	.262 - 1.482	1.841
Hitchhiked	.024	.001 - .047	1.326	.044	-0.000 - .092	1.059
Stolen from family	.140	.091 - .189	1.230	1.892	-0.000 - 4.940	1.056
Hit teacher	.012	-0.000 - .025	.891	.020	-0.000 - .043	.891
Hit parents	.036	.010 - .062	1.228	.208	-0.000 - .554	1.132
Hit students	.436	.379 - .493	.796	2.540	1.439 - 3.641	.560
Disorderly conduct	.177	.116 - .238	1.546	.916	.166 - 1.665	1.514
Sold hard drugs	0.000	0.000 - 0.000	1.000	0.000	0.000 - 0.000	1.000
Joyriding	.008	-0.000 - .019	.928	.008	-0.000 - .019	1.512
Liquor for minor	0.000	0.000 - 0.000	1.000	0.000	0.000 - 0.000	1.000
Sexual assault	.020	-0.000 - .041	1.364	.045	-0.000 - .099	1.631
Strongarmed students	.024	-0.000 - .052	2.058	.072	-0.000 - .187	2.832
Strongarmed teachers	0.000	0.000 - 0.000	1.000	0.000	0.000 - 0.000	1.000
Strongarmed others	.020	-0.000 - .041	1.413	.100	-0.000 - .256	1.468
Evaded payment	.080	-.037 - .123	1.564	.656	-0.000 - 1.471	.977
Public drunkenness	.008	-0.000 - .019	.976	.008	-0.000 - .019	.972

K. ELEVEN YEAR OLDS (continued)

<u>OFFENSES</u>	<u>PROPORTION REPORTING ONE OR MORE OFFENSES</u>	<u>.95 CONFIDENCE INTERVAL</u>	<u>DESIGN EFFECTS</u>	<u>MEAN NUMBER OF OFFENSES</u>	<u>.95 CONFIDENCE INTERVAL</u>	<u>DESIGN EFFECTS</u>
Stole something 5-50	.008	-0.000 - .020	1.024	.068	-0.000 - .185	1.027
Stole at school	.016	-0.000 - .042	2.525	.028	-0.000 - .069	1.327
Broke into bldg/vehc	.016	-0.000 - .032	1.041	.020	-0.000 - .041	1.005
Panhandled	.004	-0.000 - .012	.972	.008	-0.000 - .024	.968
Skipped classes	.052	.020 - .084	1.265	.096	.024 - .168	1.365
Didn't return change	.212	.155 - .269	1.175	1.008	-0.000 - 2.228	1.003
Suspension	.020	.003 - .037	.939	.024	0.002 - .046	.942
Obscene calls	.064	.029 - .099	1.283	.244	-0.000 - .519	1.178

SELF-REPORTED DELINQUENCY ESTIMATES - 1976

L. TWELVE YEAR OLDS

OFFENSES	PROPORTION REPORTING ONE OR MORE OFFENSES	.95 CONFIDENCE INTERVAL	DESIGN EFFECTS	MEAN NUMBER OF OFFENSES	.95 CONFIDENCE INTERVAL	DESIGN EFFECTS
Damaged family prop.	.280	.221 - .339	1.083	.875	.398 - 1.353	1.145
Damaged school prop.	.152	.107 - .196	.960	.323	.183 - .463	1.032
Damaged other prop.	.167	.113 - .221	1.316	2.086	-0.000 - 5.037	.978
Stole motor vehicle	0.000	0.000 - 0.000	1.000	0.000	0.000 - 0.000	1.000
Stole something GT\$50	.008	-0.000 - .019	.997	.008	-0.000 - .019	.993
Bought stolen goods	.062	.028 - .096	1.226	.136	.052 - .221	1.078
Thrown objects	.451	.385 - .518	1.113	17.288	5.041 - 29.535	1.153
Runaway	.054	.020 - .089	1.441	.089	.029 - .150	1.370
Lied about age	.222	.170 - .274	.978	1.047	.102 - 1.991	1.071
Carried Hidden Weapon	.047	.014 - .079	1.499	.335	-0.000 - .730	1.002
Stole something Lt\$5	.152	.097 - .206	1.438	.292	.180 - .404	1.174
Aggravated assault	.054	.023 - .086	1.191	.315	-0.000 - .729	.982
Prostitution	.008	-0.000 - .019	1.021	.012	-0.000 - .030	1.015
Sexual intercourse	.043	.019 - .067	.895	1.533	-0.000 - 4.440	1.007
Gang fights	.125	.078 - .171	1.243	.374	.188 - .559	1.280
Sold marijuana	.008	-0.000 - .019	.974	.019	-0.000 - .047	.968
Cheated on sch. test	.366	.306 - .426	.980	1.603	.945 - 2.261	.867
Hitchhiked	.027	.006 - .048	1.026	.058	.008 - .109	1.022
Stolen from family	.191	.146 - .236	.823	.518	.312 - .723	.853
Hit teacher	.070	.037 - .103	1.032	1.735	-0.000 - 4.619	.988
Hit parents	.039	.011 - .066	1.275	1.482	-0.000 - 4.393	1.026
Hit students	.521	.448 - .595	1.368	8.833	1.152 - 16.514	1.039
Disorderly conduct	.257	.196 - .317	1.199	4.039	-0.000 - 9.743	.979
Sold hard drugs	.004	-0.000 - .012	1.010	.004	-0.000 - .012	1.006
Joyriding	.023	.006 - .040	.794	.093	0.004 - .183	.998
Liquor for minor	.004	0.000 - 0.012	.979	.008	-0.000 - .023	.975
Sexual assault	.008	-0.000 - .019	1.013	.016	-0.000 - .041	1.022
Strongarmed students	.023	.004 - .043	1.015	.179	-0.000 - .410	1.087
Strongarmed teachers	.008	-0.000 - .024	2.029	.012	-0.000 - .035	1.817
Strongarmed others	.039	.012 - .066	1.242	.043	.011 - .075	1.331
Evaded payment	.171	.121 - .222	1.124	.619	.231 - 1.006	.788
Public drunkenness	.016	0.000 - .031	.971	.039	-0.000 - .084	.985

L. TWELVE YEAR OLDS (continued)

<u>OFFENSES</u>	<u>PROPORTION REPORTING ONE OR MORE OFFENSES</u>	<u>.95 CONFIDENCE INTERVAL</u>	<u>DESIGN EFFECTS</u>	<u>MEAN NUMBER OF OFFENSES</u>	<u>.95 CONFIDENCE INTERVAL</u>	<u>DESIGN EFFECTS</u>
Stole something 5-50	.031	.007 - .055	1.190	.055	.012 - .097	.995
Stole at school	.062	.038 - .086	.626	.125	.064 - .185	.657
Broke into bldg/vehc	.012	-0.000 - .025	.976	.016	-0.000 - .034	.966
Panhandled	.023	.001 - .046	1.420	.058	-0.000 - .124	1.122
Skipped classes	.113	.069 - .156	1.185	1.105	.092 - 2.118	.906
Didn't return change	.309	.237 - .380	1.513	2.082	-0.000 - 4.630	.987
Suspension	.039	.009 - .069	1.488	.070	.002 - .138	1.724
Obscene calls	.109	.066 - .151	1.168	1.770	-0.000 - 4.652	1.004

SELF-REPORTED DELINQUENCY ESTIMATES - 1976

M. THIRTEEN YEAR OLDS

OFFENSES	PROPORTION REPORTING ONE OR MORE OFFENSES	.95 CONFIDENCE INTERVAL	DESIGN EFFECTS	MEAN NUMBER OF OFFENSES	.95 CONFIDENCE INTERVAL	DESIGN EFFECTS
Damaged family prop.	.272	.209 - .336	1.333	1.011	.215 - 1.807	1.069
Damaged school prop.	.160	.114 - .207	1.045	1.470	-0.000 - 3.720	.986
Damaged other prop.	.187	.132 - .241	1.286	.922	.057 - 1.786	1.031
Stole motor vehicle	.015	.000 - .030	.974	.041	-0.000 - .103	1.021
Stole something GT\$50	.019	.002 - .035	1.008	.019	.002 - .035	1.004
Bought stolen goods	.104	.070 - .139	.850	.280	.131 - .429	.991
Thrown objects	.552	.489 - .616	1.068	12.963	6.017 - 19.908	1.082
Runaway	.045	.020 - .070	.973	.045	.020 - .070	.969
Lied about age	.231	.170 - .292	1.372	.705	.452 - .959	1.257
Carried Hidden Weapon	.071	.044 - .098	.708	.724	-0.000 - 1.892	1.056
Stole something Lt\$5	.160	.120 - .201	.791	3.840	-0.000 - 9.542	1.078
Aggravated assault	.063	.026 - .101	1.542	.179	.021 - .337	1.131
Prostitution	.015	-0.000 - .033	1.451	.045	-0.000 - .114	1.179
Sexual intercourse	.068	.020 - .115	2.333	1.508	-0.000 - 4.143	.980
Gang fights	.131	.089 - .172	1.010	.291	.187 - .395	.852
Sold marijuana	.019	.002 - .035	.993	1.026	-0.000 - 2.974	.984
Cheated on sch. test	.448	.378 - .518	1.302	2.664	.967 - 4.362	1.032
Hitchhiked	.049	.024 - .074	.891	.427	-0.000 - .869	1.012
Stolen from family	.164	.122 - .207	.869	.403	.244 - .562	1.010
Hit teacher	.097	.056 - .138	1.238	.683	-0.000 - 1.445	.982
Hit parents	.082	.051 - .113	.844	.526	-0.000 - 1.290	1.016
Hit students	.552	.483 - .621	1.265	8.104	1.785 - 14.424	1.121
Disorderly conduct	.291	.230 - .352	1.184	1.754	.854 - 2.653	1.019
Sold hard drugs	.007	-0.000 - .018	.969	.011	-0.000 - .028	.975
Joyriding	.041	.019 - .063	.783	.138	-0.000 - .285	.880
Liquor for minor	.022	.005 - .040	.942	.119	-0.000 - .277	1.011
Sexual assault	.026	.007 - .046	.952	.045	.006 - .084	.950
Strongarmed students	.037	.010 - .064	1.315	.183	.003 - .363	1.150
Strongarmed teachers	.011	-0.000 - .024	.934	.380	-0.000 - 1.129	.984
Strongarmed others	.037	.015 - .059	.884	.108	.003 - .214	.980
Evaded payment	.199	.150 - .247	.969	2.888	-0.000 - 5.886	.901
Public drunkenness	.060	.034 - .086	.792	.119	.046 - .193	1.002

M. THIRTEEN YEAR OLDS (continued)

<u>OFFENSES</u>	<u>PROPORTION REPORTING ONE OR MORE OFFENSES</u>	<u>.95 CONFIDENCE INTERVAL</u>	<u>DESIGN EFFECTS</u>	<u>MEAN NUMBER OF OFFENSES</u>	<u>.95 CONFIDENCE INTERVAL</u>	<u>DESIGN EFFECTS</u>
Stole something 5-50	.045	.017 - .072	1.166	.116	.017 - .214	1.167
Stole at school	.063	.033 - .094	1.029	.974	-0.000 - 2.482	.976
Broke into bldg/vehc	.045	.013 - .076	1.515	.090	.019 - .161	1.132
Panhandled	.037	.010 - .064	1.331	.246	-0.000 - .507	1.066
Skipped classes	.187	.139 - .234	.974	1.418	.446 - 2.390	1.094
Didn't return change	.261	.205 - .317	1.058	1.160	.620 - 1.700	.989
Suspension	.108	.066 - .151	1.218	.366	.103 - .628	1.169
Obscene calls	.179	.126 - .232	1.265	1.328	.430 - 2.226	1.055

SELF-REPORTED DELINQUENCY ESTIMATES - 1976

N. FOURTEEN YEAR OLDS

OFFENSES	PROPORTION REPORTING ONE OR MORE OFFENSES	.95 CONFIDENCE INTERVAL	DESIGN EFFECTS	MEAN NUMBER OF OFFENSES	.95 CONFIDENCE INTERVAL	DESIGN EFFECTS
Damaged family prop.	.252	.194 - .309	1.107	.570	.392 - .748	1.189
Damaged school prop.	.182	.130 - .234	1.136	.531	.295 - .767	1.415
Damaged other prop.	.217	.162 - .272	1.120	.601	.369 - .832	1.054
Stole motor vehicle	.008	-0.000 - .019	1.000	.012	-0.000 - .029	.996
Stole something GT\$50	.019	.002 - .036	.953	.120	-0.000 - .318	1.001
Bought stolen goods	.112	.075 - .150	.889	1.116	-0.000 - 2.394	.988
Thrown objects	.512	.438 - .585	1.356	2.221	4.740 - 19.702	1.263
Runaway	.062	.030 - .094	1.134	.101	.036 - .166	1.015
Lied about age	.257	.191 - .323	1.422	.984	.612 - 1.357	1.145
Carried Hidden Weapon	.066	.031 - .101	1.263	.415	-0.000 - .862	1.003
Stole something Lt\$5	.209	.160 - .258	.916	1.368	.392 - 2.344	.926
Aggravated assault	.062	.031 - .093	1.068	.151	.017 - .286	1.048
Prostitution	.012	-0.000 - .029	1.635	.012	-0.000 - .029	1.629
Sexual intercourse	.122	.068 - .176	1.668	.744	.344 - 1.145	.978
Gang fights	.097	.060 - .134	.984	.221	.122 - .320	.664
Sold marijuana	.051	.023 - .078	.991	1.949	-0.000 - 4.799	.953
Cheated on sch. test	.539	.471 - .606	1.164	3.922	2.415 - 5.430	.910
Hitchhiked	.089	.060 - .118	.666	1.783	-0.000 - 4.843	.951
Stolen from family	.143	.102 - .185	.876	.333	.151 - .516	.933
Hit teacher	.097	.061 - .133	.933	.147	.091 - .204	.711
Hit parents	.066	.040 - .092	.675	.147	.051 - .243	.956
Hit students	.504	.437 - .571	1.139	6.566	2.939 - 10.193	1.120
Disorderly conduct	.329	.273 - .386	.917	2.050	1.109 - 2.992	1.155
Sold hard drugs	.116	-0.000 - .025	1.000	.016	-0.000 - .035	1.001
Joyriding	.054	.027 - .081	.891	.093	.035 - .151	.975
Liquor for minor	.031	.009 - .053	.992	.101	-0.000 - .206	1.031
Sexual assault	.008	-0.000 - .019	.969	.085	-0.000 - .240	.962
Strongarmed students	.031	.007 - .055	1.178	.081	.007 - .155	1.093
Strongarmed teachers	.008	-0.000 - .019	.977	.016	-0.000 - .037	.973
Strongarmed others	.023	-0.000 - .047	1.531	.117	-0.000 - .266	1.341
Evaded payment	.202	.146 - .257	1.206	2.345	.561 - 4.129	1.520
Public drunkenness	.101	.071 - .131	.617	1.043	.046 - 2.039	.935

N. FOURTEEN YEAR OLDS (continued)

<u>OFFENSES</u>	<u>PROPORTION REPORTING ONE OR MORE OFFENSES</u>	<u>.95 CONFIDENCE INTERVAL</u>	<u>DESIGN EFFECTS</u>	<u>MEAN NUMBER OF OFFENSES</u>	<u>.95 CONFIDENCE INTERVAL</u>	<u>DESIGN EFFECTS</u>
Stole something 5-50	.058	.027 - .090	1.136	.837	-0.000 - 1.828	.974
Stole at school	.058	.031 - .085	.818	.388	-0.000 - .798	1.067
Broke into bldg/vehc	.066	.031 - .101	1.230	.434	-0.000 - 1.030	1.000
Panhandled	.027	.007 - .047	.977	.105	-0.000 - .223	.916
Skipped classes	.353	.290 - .415	1.086	3.872	1.284 - 6.460	1.773
Didn't return change	.267	.212 - .323	.992	1.411	.503 - 2.319	1.524
Suspension	.105	.065 - .144	1.068	.337	.101 - .573	.923
Obscene calls	.128	.088 - .168	.909	.550	.236 - .865	.906

SELF-REPORTED DELINQUENCY ESTIMATES - 1976

O. FIFTEEN YEAR OLDS

OFFENSES	PROPORTION REPORTING ONE OR MORE OFFENSES	.95 CONFIDENCE INTERVAL	DESIGN EFFECTS	MEAN NUMBER OF OFFENSES	.95 CONFIDENCE INTERVAL	DESIGN EFFECTS
Damaged family prop.	.251	.189 - .313	1.258	2.108	-0.000 - 4.861	.872
Damaged school prop.	.243	.183 - .303	1.219	3.012	-0.000 - 7.984	.991
Damaged other prop.	.247	.184 - .310	1.292	1.211	.271 - 2.151	1.043
Stole motor vehicle	.016	-0.000 - .032	1.035	.020	-0.000 - .042	1.044
Stole something GT\$50	.056	.014 - .097	1.993	.151	.032 - .271	1.122
Bought stolen goods	.143	.088 - .199	1.546	.769	.121 - 1.417	.984
Thrown objects	.512	.439 - .585	1.314	11.300	4.561 - 18.039	.984
Runaway	.060	.025 - .094	1.294	.131	.031 - .232	1.104
Lied about age	.367	.304 - .429	1.024	3.442	.432 - 6.453	.961
Carried Hidden Weapon	.124	.064 - .183	1.982	1.060	.030 - 2.090	1.287
Stole something Lt\$5	.247	.191 - .303	1.045	1.498	.793 - 2.203	1.002
Aggravated assault	.072	.032 - .112	1.483	.151	.040 - .263	1.200
Prostitution	.016	-0.000 - .032	1.035	.019	-0.000 - .041	1.021
Sexual intercourse	.172	.118 - .226	1.258	1.672	.597 - 2.747	.927
Gang fights	.159	.120 - .199	.727	.406	.211 - .602	.917
Sold marijuana	.064	.027 - .101	1.412	.610	-0.000 - 1.237	1.049
Cheated on sch. test	.644	.575 - .713	1.262	4.372	3.108 - 5.637	.895
Hitchhiked	.140	.090 - .190	1.245	2.636	-0.000 - 6.009	1.008
Stolen from family	.171	.119 - .224	1.177	.502	.274 - .730	1.037
Hit teacher	.104	.050 - .157	1.886	.343	.107 - .578	1.587
Hit parents	.060	.028 - .091	1.068	.506	-0.000 - 1.324	1.026
Hit students	.516	.438 - .594	1.504	6.692	1.644 - 11.740	.890
Disorderly conduct	.422	.347 - .498	1.443	6.641	.774 - 12.509	.980
Sold hard drugs	.012	-0.000 - .026	1.010	.036	-0.000 - .094	1.024
Joyriding	.084	.043 - .124	1.318	.179	.066 - .293	1.386
Liquor for minor	.052	.028 - .076	.727	.673	-0.000 - 1.557	1.031
Sexual assault	.004	-0.000 - .012	.993	.004	-0.000 - .012	.989
Strongarmed students	.040	.013 - .066	1.116	.112	.011 - .212	1.007
Strongarmed teachers	.004	-0.000 - .012	1.001	.004	-0.000 - .012	.997
Strongarmed others	.036	.016 - .056	.726	.088	.032 - .143	.671
Evaded payment	.327	.263 - .390	1.131	2.112	1.014 - 3.209	1.128
Public drunkenness	.195	.145 - .245	.976	1.032	.552 - 1.512	.837

O. FIFTEEN YEAR OLDS (continued)

<u>OFFENSES</u>	<u>PROPORTION REPORTING ONE OR MORE OFFENSES</u>	<u>.95 CONFIDENCE INTERVAL</u>	<u>DESIGN EFFECTS</u>	<u>MEAN NUMBER OF OFFENSES</u>	<u>.95 CONFIDENCE INTERVAL</u>	<u>DESIGN EFFECTS</u>
Stole something 5-50	.104	.051 - .156	1.818	.335	.118 - .551	1.036
Stole at school	.112	.065 - .158	1.334	.247	.134 - .360	1.156
Broke into bldg/vehc	.068	.031 - .104	1.282	.211	.078 - .344	1.001
Panhandled	.024	.005 - .043	.988	.167	-0.000 - .409	.962
Skipped classes	.470	.397 - .543	1.310	7.442	-0.000 - 15.024	1.729
Didn't return change	.360	.292 - .428	1.224	2.416	-0.000 - 5.348	1.257
Suspension	.135	.082 - .188	1.469	.311	.153 - .469	1.088
Obscene calls	.143	.083 - .204	1.844	.482	.295 - .669	.709

SELF-REPORTED DELINQUENCY ESTIMATES - 1976

P. SIXTEEN YEAR OLDS

OFFENSES	PROPORTION REPORTING ONE OR MORE OFFENSES	.95 CONFIDENCE INTERVAL	DESIGN EFFECTS	MEAN NUMBER OF OFFENSES	.95 CONFIDENCE INTERVAL	DESIGN EFFECTS
Damaged family prop.	.176	.131 - .222	.824	.366	.237 - .495	1.010
Damaged school prop.	.155	.108 - .203	.998	.714	.101 - 1.328	1.021
Damaged other prop.	.130	.083 - .178	1.165	.466	.229 - .704	1.071
Stole motor vehicle	.008	-0.000 - .020	.959	.013	-0.000 - .031	.947
Stole something GT\$50	.025	.005 - .046	1.013	.063	.001 - .125	.994
Bought stolen goods	.092	.057 - .128	.890	.441	.095 - .787	1.034
Thrown objects	.429	.374 - .483	.711	3.702	1.900 - 5.503	.735
Runaway	.071	.034 - .109	1.240	.101	.047 - .155	1.131
Lied about age	.374	.310 - .438	1.001	6.244	2.373 - 10.115	1.050
Carried Hidden Weapon	.055	.024 - .085	1.028	2.340	-0.000 - 5.574	1.027
Stole something Lt\$5	.181	.129 - .233	1.059	.702	.370 - 1.034	.975
Aggravated assault	.076	.040 - .111	1.033	.193	-0.000 - .412	1.469
Prostitution	.008	-0.000 - .025	2.010	.008	-0.000 - .025	2.002
Sexual intercourse	.230	.173 - .287	1.047	4.281	2.161 - 6.401	.702
Gang fights	.092	.054 - .131	1.046	.252	.099 - .405	.800
Sold marijuana	.085	.047 - .122	1.047	1.343	.001 - 2.686	1.058
Cheated on sch. test	.600	.521 - .679	1.511	4.238	2.977 - 5.499	.784
Hitchhiked	.152	.102 - .202	1.108	1.473	.056 - 2.889	1.070
Stolen from family	.160	.117 - .202	.786	.924	.305 - 1.543	1.041
Hit teacher	.055	.028 - .082	.827	.072	.033 - .110	.861
Hit parents	.071	.036 - .107	1.104	.126	.049 - .203	1.119
Hit students	.414	.353 - .474	.884	2.046	1.272 - 2.821	1.045
Disorderly conduct	.378	.313 - .443	1.047	3.244	1.009 - 5.479	.706
Sold hard drugs	.008	-0.000 - .021	1.044	.055	-0.000 - .158	1.017
Joyriding	.071	.038 - .105	.968	.130	.058 - .202	1.031
Liquor for minor	.130	.082 - .178	1.184	2.651	.452 - 4.850	.865
Sexual assault	.017	-0.000 - .034	1.003	.042	-0.000 - .103	.997
Strongarmed students	.038	.016 - .060	.784	.059	.020 - .098	.843
Strongarmed teachers	.008	-0.000 - .021	1.035	.013	-0.000 - .032	1.027
Strongarmed others	.025	.005 - .046	.996	.084	.000 - .168	.964
Evaded payment	.273	.213 - .333	1.043	1.084	.692 - 1.476	.919
Public drunkenness	.311	.257 - .365	.787	4.760	1.657 - 7.864	.906

P. SIXTEEN YEAR OLDS (continued)

<u>OFFENSES</u>	<u>PROPORTION REPORTING ONE OR MORE OFFENSES</u>	<u>.95 CONFIDENCE INTERVAL</u>	<u>DESIGN EFFECTS</u>	<u>MEAN NUMBER OF OFFENSES</u>	<u>.95 CONFIDENCE INTERVAL</u>	<u>DESIGN EFFECTS</u>
Stole something 5-50	.084	.043 - .125	1.244	.328	.072 - .583	1.023
Stole at school	.081	.048 - .113	.802	.246	.060 - .431	.941
Broke into bldg/vehc	.046	.016 - .077	1.226	.071	.021 - .122	1.105
Panhandled	.029	.008 - .051	.971	.290	-0.000 - .797	.986
Skipped classes	.487	.416 - .559	1.189	5.822	3.514 - 8.130	1.012
Didn't return change	.328	.260 - .396	1.216	.769	.559 - .978	1.061
Suspension	.174	.120 - .227	1.143	.449	.275 - .624	.876
Obscene calls	.097	.056 - .137	1.097	.513	.081 - .944	.986

SELF-REPORTED DELINQUENCY ESTIMATES - 1976

Q. SEVENTEEN YEAR OLDS

OFFENSES	PROPORTION REPORTING ONE OR MORE OFFENSES	.95 CONFIDENCE INTERVAL	DESIGN EFFECTS	MEAN NUMBER OF OFFENSES	.95 CONFIDENCE INTERVAL	DESIGN EFFECTS
Damaged family prop.	.178	.115 - .241	1.304	.315	.191 - .439	1.340
Damaged school prop.	.132	.090 - .174	.747	.320	.202 - .437	.611
Damaged other prop.	.137	.080 - .195	1.348	.274	.156 - .393	.925
Stole motor vehicle	.020	-0.000 - .041	1.037	.030	-0.000 - .063	1.031
Stole something GT\$50	.025	.002 - .049	1.060	.051	-0.000 - .105	1.001
Bought stolen goods	.142	.083 - .201	1.372	.396	.107 - .685	1.204
Thrown objects	.345	.288 - .402	.689	1.898	1.161 - 2.636	.952
Runaway	.091	.049 - .134	1.064	.112	.060 - .164	.926
Lied about age	.365	.302 - .429	.842	8.487	-0.000 - 19.024	1.037
Carried Hidden Weapon	.071	.036 - .106	.881	2.437	-0.000 - 6.285	1.012
Stole something Lt\$5	.208	.156 - .260	.790	.721	.372 - 1.069	.873
Aggravated assault	.081	.041 - .121	1.041	.152	.054 - .250	1.170
Prostitution	.010	-0.000 - .025	1.013	.594	-0.000 - 1.801	1.027
Sexual intercourse	.325	.255 - .395	1.078	11.777	.634 - 22.919	1.069
Gang fights	.127	.079 - .174	.983	.254	.146 - .362	.846
Sold marijuana	.102	.055 - .148	1.123	.924	-0.000 - 2.188	1.038
Cheated on sch. test	.510	.427 - .594	1.334	2.801	1.763 - 3.839	.887
Hitchhiked	.132	.086 - .178	.906	2.447	.040 - 4.853	.953
Stolen from family	.102	.057 - .147	1.110	.279	.081 - .477	1.000
Hit teacher	.097	.049 - .145	1.246	.405	-0.000 - .931	.940
Hit parents	.081	.044 - .119	.913	5.173	-0.000 - 15.518	1.017
Hit students	.379	.308 - .451	1.024	7.103	-0.000 - 17.347	.975
Disorderly conduct	.416	.349 - .484	.897	3.391	1.590 - 5.192	.998
Sold hard drugs	.015	-0.000 - .033	.994	1.650	-0.000 - 4.990	1.027
Joyriding	.051	.022 - .080	.848	.137	.015 - .259	.939
Liquor for minor	.117	.084 - .149	.489	1.244	-0.000 - 2.495	.996
Sexual assault	.030	.006 - .055	.999	.081	.007 - .156	.993
Strongarmed students	.015	-0.000 - .033	.974	.056	-0.000 - .134	.962
Strongarmed teachers	.010	-0.000 - .025	1.003	.010	-0.000 - .025	.998
Strongarmed others	.030	.004 - .056	1.104	.294	-0.000 - .639	1.017
Evaded payment	.223	.163 - .284	1.015	1.675	-0.000 - 3.525	.970
Public drunkenness	.330	.272 - .388	.722	2.183	.768 - 3.598	1.136

Q. SEVENTEEN YEAR OLDS (continued)

<u>OFFENSES</u>	<u>PROPORTION REPORTING ONE OR MORE OFFENSES</u>	<u>.95 CONFIDENCE INTERVAL</u>	<u>DESIGN EFFECTS</u>	<u>MEAN NUMBER OF OFFENSES</u>	<u>.95 CONFIDENCE INTERVAL</u>	<u>DESIGN EFFECTS</u>
Stole something 5-50	.066	.029 - .103	1.089	.112	.037 - .186	1.205
Stole at school	.067	.024 - .109	1.395	.123	.025 - .221	1.328
Broke into bldg/vehc	.030	.010 - .051	.687	.056	.002 - .110	.978
Panhandled	.061	.023 - .099	1.197	.132	.047 - .217	1.121
Skipped classes	.631	.572 - .689	.696	10.903	5.667 - 16.138	1.070
Didn't return change	.284	.225 - .343	.829	.822	.518 - 1.127	.901
Suspension	.149	.095 - .202	1.085	.318	.185 - .451	.805
Obscene calls	.041	.012 - .069	.992	.594	-0.000 - 1.615	.985

END