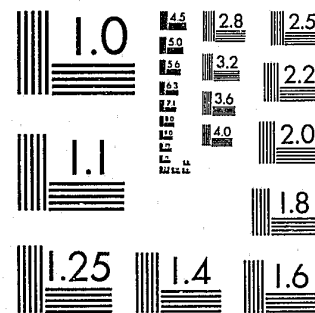


National Criminal Justice Reference Service

**ncjrs**

This microfiche was produced from documents received for inclusion in the NCJRS data base. Since NCJRS cannot exercise control over the physical condition of the documents submitted, the individual frame quality will vary. The resolution chart on this frame may be used to evaluate the document quality.



MICROCOPY RESOLUTION TEST CHART  
NATIONAL BUREAU OF STANDARDS-1963-A

Microfilming procedures used to create this fiche comply with the standards set forth in 41CFR 101-11.504.

Points of view or opinions stated in this document are those of the author(s) and do not represent the official position or policies of the U. S. Department of Justice.

National Institute of Justice  
United States Department of Justice  
Washington, D. C. 20531

DATE FILMED

5/12/81

~~X~~  
THE NATIONAL YOUTH SURVEY

MH 27552

LEAA 78-JN-AX-0003

Delbert S. Elliott, Principal Investigator (NIMH & LEAA)  
Suzanne S. Ageton, Co-Principal Investigator (NIMH)  
Brian A. Knowles, Assistant Project Director (LEAA)  
Tim Brennan, Investigator (LEAA)  
Rachelle J. Canter, Investigator (NIMH)  
David Huizinga, Investigator (NIMH)

~~X~~  
PROJECT REPORT NO. 9  
(REVISED)

~~X~~  
1978 SELF-REPORTED DELINQUENCY ESTIMATES  
BY SEX, RACE, CLASS AND AGE

by

D.S. ELLIOTT, S.S. AGETON, and D. HUIZINGA

September, 1979

Behavioral Research Institute

Boulder, CO

**NCJRS**

**FEB 3 1981**

**ACQUISITIONS**

75502

The National Youth Survey (NYS) is a longitudinal study of delinquency among American youth during the period from 1976 to 1980.<sup>1</sup> A major objective of the study is to provide a description of the incidence and distribution of specific delinquent acts and patterns of delinquent acts during this five year period.<sup>2</sup> The NYS involves a panel design with a national probability sample of 1,725 adolescents aged 11-17 in 1976. The total youth sample was selected and initially interviewed between January and March 1977, concerning their involvement in delinquent behavior during the calendar year 1976. The second, third, fourth and fifth surveys were conducted during this same period in successive years. Estimates of the incidence of delinquent behavior in this national youth panel are thus available for calendar years 1976 through 1980.

#### The Measure of Delinquent Behavior

The measure of delinquent behavior used in this study is a self-reported delinquency (SRD) measure. In the light of prior criticism of SRD measures

---

<sup>1</sup> The National Youth Survey is funded by the Center for Studies of Crime and Delinquency, NIMH (MH27552), and the National Institute for Juvenile Justice and Delinquency Prevention LEAA (78-JN-AX-0003). The first, fourth, and fifth surveys were funded by NIMH; the second and third by NIMH and LEAA jointly.

<sup>2</sup> The study also involves a test of an integrated theoretical model (Elliott, Ageton, and Canter, 1979); an analysis of changing levels of involvement and patterns of delinquency over time; a comparison of self-reported and official offenses; and a study of the relationship between delinquency and drug use.

(Hindelang et al., 1975; Nettler, 1974; Farrington, 1973; Reiss, 1975), a new SRD measure which corrected many of the deficiencies in earlier measures was developed for this study.

The measure includes a broad representative set of delinquent offenses. All UCR specific offenses (with the exception of traffic violations) involving more than 1 per cent of the reported juvenile arrests for the years 1972-1974 are included in the new measure. A number of additional items are included from those offenses reported in the "other" UCR category. These additional offenses were selected on the basis of two general criteria. First, items which were theoretically relevant to a delinquent lifestyle or subculture as discussed in the literature were selected for inclusion (Cohen, 1955; Cloward and Ohlin, 1960; Miller, 1958; 1966; Yablonsky, 1962; Short and Strodtbeck, 1965). Thus, additional items—such as gang fighting, sexual intercourse, and carrying a hidden weapon—are included. Second, a systematic review of existing SRD measures was undertaken to locate items that tapped specific dimensions of delinquent behavior not previously included.

The resulting set of items is both more comprehensive and more representative of the conceptual universe of delinquent acts than found in prior SRD measures used in major, large-scale studies.<sup>3</sup> The basic item set

---

<sup>3</sup> The initial number of offense items included in the 1977 survey was 40. In the 1978 survey, approximately half of the subjects responded to a reduced set of 26 of these original 40 items, while the remainder responded to the full set. The annual incidence estimates for 1977 are thus limited to this subset of 26 offenses which are common to all subjects. The 1979 survey included the full set of 40 offenses for all subjects. The 1980 survey included 4 new items and the 1981 survey included one more new item, bringing the total offenses in the set to 44 for calendar year 1979 and 45 for calendar year 1980.

includes all but one of the UCR Part I offenses (homicide is excluded); 60 per cent of Part II offenses; and a wide range of "other" offenses--such as delinquent lifestyle items, misdemeanors, and status offenses. The vast majority of items involve a violation of criminal statutes.

Two separate response sets are used. Respondents are initially asked to indicate how many times during the past year they committed each act. If an individual's response to this open-ended question involves a frequency of 10 or more, interviewers then ask the youth to select one of the following categorical responses: 1) once a month, 2) once every 2-3 weeks, 3) once a week, 4) 2-3 times a week, 5) once a day, or 6) 2-3 times a day.<sup>4</sup> A comparison of the two response sets indicates agreement between frequency estimates given in direct response to the open-ended question and frequency estimates based upon the implied frequency associated with the midpoint of the category selected.<sup>5</sup>

A specific attempt was also made to eliminate as much overlap in items as possible. None of the items contains a necessary overlap as in "cutting school" and "cutting class." Although some possible overlap remains, it ought

---

<sup>4</sup> The categorical response set has led to the identification of some highly episodic events, e.g., 20 shoplifting offenses, all occurring within a two-month period during the summer (an initial response of 20; a categorical response 2-3 times a week, and an interviewer probe revealing that the offenses all occurred during the summer).

<sup>5</sup> At the upper end of the frequency continuum, estimates based upon the midpoint of the category are substantially higher than the frequency response given directly. The open-ended frequency measure thus appears to provide a more conservative estimate of number of delinquent acts, and the estimates reported here are based upon this response. The correlation between total SRD frequency scores and categorical scores for the 1977 survey was .65.

not to constitute a serious problem with this SRD measure.<sup>6</sup>

The SRD measure asks respondents to indicate how many times, "from Christmas a year ago to the Christmas just past," they committed each offense. The recall period is thus a year, anchored by a specific reference point relevant to most youth. The use of a one-year period which coincides almost precisely with the calendar year allows for direct comparison with UCR data, NCP victimization data, and some prior SRD data. It also avoids the need to adjust for seasonal variations.

#### Administration Procedure

Each of the annual surveys involves a structured interview with the respondent. An interview format was selected over the self-administered questionnaire format for several reasons. First, we share Gold's belief (Gold, 1966) that the interview situation (if properly structured to protect confidentiality) can insure more accurate data. Second, our previous research suggests that the reliability of SRD measures is comparable for these two administration forms (Elliott et al., 1976). Finally, the necessity of securing informed consents from all subjects and the complexity of the present research require, in our judgment, a personal contact with the

---

<sup>6</sup> Two of the context specific offenses involving theft at home and school may overlap the general theft items. These two context-specific items are not included in any of our general summary measures and contribute only to the summary measures of delinquent behavior in the home and school. We are obtaining estimates of the overlap between these two items and the general theft items in the 1981 survey.

respondents. Once this contact is made, it seems logical to use the interviewer to facilitate the data collection process and to improve the quality of the data obtained.

#### The Sample

The National Youth Survey involves a probability sample of households in the continental United States based upon a multistage, cluster sampling design. The sample was drawn in late 1976 and contained approximately 2,375 eligible youth aged 11-17 in 1976. Of these, 1,725 (73%) agreed to participate in the study and completed interviews in the 1977 survey.<sup>7</sup> An age, sex and race comparison between eligible youth not interviewed and participating youth indicates that the loss rate from any particular age, sex, or racial group appears to be proportional to that group's representation in the population. Further, with respect to these characteristics, participating youth appear to be representative of the total 11 through 17-year-old youth population in the United States as established by the U.S. Census Bureau (Huizinga, 1978).

---

<sup>7</sup> At each stage, the probabilities of selection were established to provide a self-weighting sample. Seventy-six primary sampling units were selected, with probability of selection being proportional to size. This sampling procedure resulted in the listing of 67,266 households, of which approximately 8,000 were selected for inclusion in the sample. All 11 through 17-year-old youth living in the selected households were eligible respondents for the study. The selected households generated an estimated total of 2,375 eligible youth. Of these, 650 (27%) did not participate in the study due to (1) parental refusal, (2) youth refusal, (3) an inability to make contact with the respondent, or (4) the youth being considered inappropriate for inclusion in the study (e.g., severely mentally retarded). Based upon a comparison with 1976 U.S. Census Bureau estimates, the resulting sample of participating youth does appear representative of American youth with respect to age, sex, and race (U.S. Bureau of the Census, 1977). For a detailed description of the sample, see Huizinga, 1978.

#### The Calculation of Annual Incidence Estimates

Annual national incidence estimates have been calculated for the total adolescent population and for sub-populations defined by sex, SES, ethnicity, and age. These estimates are presented in the following tables. For each of these groups, both the proportion of youth reporting one or more offenses of each type and the mean number of offenses of each type are reported. For each estimate, the .95 confidence interval and design effect are also presented.<sup>8</sup>

Since the NYS involves a national youth panel, the relevant age range changes each year as the panel matures. In order to obtain a precise age for purposes of the age-specific estimates, age categories reflect the respondent's age at the end (i.e., Dec. 31) of each calendar year. The age range for 1976 is 11 to 17. For 1980, the age range is 15-21.

The social class measure employed in these tables is the Hollingshead two-factor index (Hollingshead and Redlich, 1958) as applied to the principal wage earner in each youth's family. Hollingshead classes 1 and 2, involving primarily professional/managerial occupations and college level educations, are collapsed to make the Class I category in the tables. Hollingshead class

---

<sup>8</sup> By applying a uniform sampling fraction in all sample strata, a self-weighting sample was obtained. A combined ratio estimate is used for the estimates of the proportion of youth involved in each behavior. The variance of these estimates is obtained by the method of collapsed strata (Kish, 1965). Complete description of the estimation procedures are contained in Project Report No. 2: Description of the National Youth Sample (Huizinga, 1978). These proportion and variance estimates are used in the computation of the confidence intervals.

The design effect is the ratio of the actual variance to the variance of the estimate from a simple random sample of the same size. It thus indicates the extent of clustering of the delinquent behaviors in geographical areas. The confidence intervals presented here have taken into account these clustering effects.

3, primarily owners of small businesses, clerical workers and persons in sales occupations and skilled manual occupations with high school or some college completed, constitutes the Class II category. Hollingshead classes 4 and 5, primarily semiskilled persons and those in unskilled manual occupations with high school or lower levels of education, make up the Class III category.

Specific estimates (proportions and means) are presented for whites (Anglos), blacks, Hispanics and a residual "other" category. Because of the small number of Hispanic respondents (N=76) and some obvious clustering of this ethnic group, the accuracy of the variance estimates is questionable, and we have not included confidence intervals or design effects for this subgroup. The same situation holds for the "other" ethnic category (N=28). Confidence intervals and design effects are thus presented for only the white and black ethnic categories.

Figure 1 below indicates the sizes of each of the subgroups for whom incidence estimates are presented. These subgroup N's represent our base subgroup sizes and are constant across all 5 reporting years (1976-1980).

SUBGROUPS FOR INCIDENCE ESTIMATES

<u>Sex</u>		<u>Race</u>				<u>Class</u>			
Male	Female	White	Black	Hispanic	Other	I	II	III	Missing
N 918	807	1361	260	76	28	392	509	722	102
% 53.2	46.8	78.9	15.1	4.4	1.6	22.7	29.5	41.9	5.9

<u>Birth Cohorts</u>							
	1965	1964	1963	1962	1961	1960	1959
Age 1976:	11	12	13	14	15	16	17
N	252	257	269	258	253	239	197
%	14.6	14.9	15.6	15.0	14.7	13.9	11.4

Figure 1

The mean frequency estimates are based upon the open-ended frequency estimates provided by the respondents. An examination of individual responses revealed a few reports with very high frequencies. This was a source of some concern since these extreme scores, if exaggerations or falsifications, should be "corrected" or modified so as not to unfairly effect the estimates of mean frequencies. In a special review of respondents with extreme scores, all subjects reporting frequencies of 24 or greater to any SRD item were identified. Two kinds of checks were made on these respondents. First, high score offense items were examined to determine if the response seemed reasonable, unlikely, or impossible. For example, throwing objects (snowballs) 100 times a year is not an unreasonable response; but armed robbery 100 times a year, while not impossible, does appear unlikely. Second, interviewer comments relative to specific items or to the general SRD item set were examined for impressions about the validity of these responses.

Several conclusions seem warranted from this review. First, the majority of interviewer comments associated with extreme scores provided positive justification for these scores rather than suggestions or impressions about deliberate falsification or exaggeration. Second, virtually none of the responses were logically impossible. Third, many of the highest frequency responses were reasonably justified by interviewer comments (for example, a report of 400 thefts under \$5 with an interviewer comment that the respondent indicated he worked at a grocery store and stole oranges to eat on a daily basis). Finally, there was no general rule for altering extreme scores which did not appear arbitrary and likely to produce errors of underestimation. As

a result, no correction was applied to individual frequency estimates.<sup>9</sup>  
This suggests caution in the interpretation of the mean frequency estimates particularly when the subgroup size is small, since one or two extreme scores can dramatically effect the estimate.<sup>10</sup>

<sup>9</sup> In a few instances, respondents were judged to be unreliable or unresponsive on the whole set of SRD items and were assigned no scores on the SRD items. But no individual item level adjustments to reported frequencies were made. In the 1980 and 1981 surveys, follow-up questions to the SRD items were included so as to obtain descriptions of the events being reported. From these descriptions, estimates of the appropriateness or inappropriateness of the events reported in response to specific SRD items can be calculated, and general corrections for classes of subjects can be determined. Such corrections will apply to individual SRD items and will be available only for 1979 and 1980 incidence estimates.

<sup>10</sup> In our full report of the epidemiology of delinquent behavior, we present the median and mode of the distribution in addition to the mean, so as to alert the reader to this potential problem.

REFERENCES

- Cloward, Richard A. and Lloyd E. Ohlin  
1960 Delinquency and Opportunity. Glencoe, Ill.: Free Press.
- Cohen, Albert K.  
1955 Delinquent Boys: The Culture of the Gang. Glencoe, Ill.: Free Press.
- Elliott, Delbert S., Suzanne S. Ageton, Margaret Hunter, and Brian Knowles  
1976 Research Handbook for Community Planning and Feedback Instruments (Revised). Vol. 1. Prepared for the Office of Youth Development, Department of Health, Education and Welfare, HEW-05-74-308. Boulder: Behavioral Research and Evaluation Corporation.
- Elliott, Delbert S., Suzanne S. Ageton, and Rachelle J. Canter  
1979 "An Integrated Theoretical Perspective on Delinquent Behavior." Journal of Research on Crime and Delinquency 16:3-27.
- Farrington, David P.  
1973 "Self-reports of Deviant Behavior: Predictive and Stable?" Journal of Criminal Law and Criminology 64:99-110.
- Gold, Martin  
1966 "Undetected Delinquent Behavior." Journal of Research in Crime and Delinquency 3:27-46.
- Hindelang, Michael J., Travis Hirschi, and Joseph G. Weis  
1975 Self-Reported Delinquency: Methods and Substance. Proposal submitted to the National Institute of Mental Health, Department of Health, Education and Welfare, MH 27778.
- Hollingshead, August B., and Frederick G. Redlich  
1958 Social Class and Mental Illness. New York: Wiley.
- Huizinga, David  
1978 Description of the National Youth Sample. Project Report No. 2. HEW Grant No. MH27552, The Dynamics of Delinquent Behavior: A National Survey. Boulder: Behavioral Research Institute.
- Kish, Leslie  
1965 Survey Sampling. New York: Wiley.
- Miller, Walter B.  
1958 "Lower Class Culture as a Generating Milieu of Gang Delinquency." Journal of Social Issues 14:5-19.

- Miller, Walter B.  
1966 "Violent Crimes in City Gangs." Annals of the American Academy of Political and Social Science 364:97-112.
- Nettler, Gwynn  
1974 Explaining Crime. New York: McGraw-Hill.
- Reiss, Albert J., Jr.  
1975 "Inappropriate Theories and Inadequate Methods as Policy Plagues: Self Reported Delinquency and the Law." Pp. 211-222 in N. J. Demarath, Jr., Otto Larson and Carl F. Schuessler (eds.), Social Policy and Sociology. New York: Academic Press.
- Short, James F., Jr., and Fred C. Stodtbeck  
1965 Group Process and Gang Delinquency. Chicago: University of Chicago Press.
- Yablonsky, Lewis  
1962 The Violent Gang. New York: MacMillan.



# SELF-REPORTED DELINQUENCY ESTIMATES - 1978

## A. TOTAL ADOLESCENT POPULATION, AGED 13-19 (N = 1,725)

OFFENSES	PROPORTION REPORTING ONE OR MORE OFFENSES	.95 CONFIDENCE INTERVAL	DESIGN EFFECTS	MEAN NUMBER OF OFFENSES	.95 CONFIDENCE INTERVAL	DESIGN EFFECTS
Damaged family prop.	.129	.110 - .147	1.157	.396	.280 - .512	.955
Damaged school prop.	.114	.096 - .132	1.317	.311	.231 - .391	1.201
Damaged other prop.	.142	.122 - .162	1.285	.389	.303 - .475	.772
Stole motor vehicle	.010	.004 - .017	1.654	.017	.005 - .030	1.540
Stole something GT\$50	.026	.017 - .034	1.175	.066	.027 - .104	1.270
Bought stolen goods	.089	.072 - .106	1.390	.401	.205 - .597	1.055
Thrown objects	.352	.313 - .392	2.721	4.586	2.973 - 6.205	1.175
Runaway	.048	.036 - .059	1.154	.077	.054 - .100	1.091
Lied about age	.315	.288 - .342	1.374	3.595	2.449 - 4.740	1.368
Carried hidden weapon	.063	.045 - .080	2.107	3.301	1.465 - 5.138	1.288
Stole something LT\$5	.145	.127 - .164	1.109	.693	.392 - .994	1.677
Aggravated assault	.041	.032 - .050	.860	.088	.052 - .124	1.041
Prostitution	.005	.002 - .008	1.000	.017	-0.000 - .037	.981
Sexual intercourse	.307	.278 - .335	1.498	7.737	6.100 - 9.374	1.313
Gang fights	.079	.065 - .093	1.086	.205	.132 - .279	.940
Sold marijuana	.103	.083 - .123	1.733	2.326	.861 - 3.790	1.278
Cheated/school test	.418	.387 - .448	1.519	2.643	2.176 - 3.109	1.001
Hitchhiked	.090	.070 - .110	1.926	1.324	.537 - 2.110	1.504
Stolen from family	.090	.077 - .104	.863	.692	.168 - 1.216	1.042
Sexual assault	.007	.001 - .012	1.000	.008	.001 - .015	1.668
Hit teacher	.066	.051 - .082	1.582	.139	.089 - .189	1.403
Hit parents	.050	.037 - .062	1.276	.100	.069 - .131	.935
Hit students	.331	.297 - .366	2.110	2.582	1.564 - 3.601	1.294
Disorderly conduct	.311	.275 - .347	2.404	2.785	1.862 - 3.708	1.473
Sold hard drugs	.015	.009 - .022	1.000	.351	-0.000 - .824	1.047
Joyriding	.045	.032 - .057	1.465	.138	.004 - .271	1.124
Liquor for minor	.127	.109 - .145	1.446	1.050	.719 - 1.382	1.123
Sexually pressured	.017	.010 - .024	1.244	.051	.022 - .081	1.008
Strongarmed students	.025	.015 - .034	1.515	.130	.044 - .217	1.145
Strongarmed teachers	.003	-0.000 - .007	1.000	.006	-0.000 - .013	1.550
Strongarmed others	.019	.011 - .027	1.400	.156	.003 - .298	1.073
Evaded payment	.158	.133 - .182	1.775	1.677	.619 - 2.735	1.824



A. TOTAL ADOLESCENT POPULATION, AGED 13-19 (continued)

<u>OFFENSES</u>	<u>PROPORTION REPORTING ONE OR MORE OFFENSES</u>	<u>.95 CONFIDENCE INTERVAL</u>	<u>DESIGN EFFECTS</u>	<u>MEAN NUMBER OF OFFENSES</u>	<u>.95 CONFIDENCE INTERVAL</u>	<u>DESIGN EFFECTS</u>
Public drunkenness	.266	.238 - .294	1.567	3.401	2.528 - 4.275	1.526
Stole something \$5-50	.057	.047 - .067	.723	.271	.111 - .431	1.466
Stole at school	.047	.037 - .056	.773	.169	.041 - .297	1.089
Broke into bldg/vehicle	.025	.015 - .034	1.532	.058	.028 - .088	1.228
Panhandled	.014	.008 - .021	1.246	.034	.001 - .066	1.476
Skipped classes	.419	.388 - .451	1.622	5.564	3.955 - 7.173	1.357
Didn't return change	.238	.210 - .264	1.626	.658	.535 - .782	1.462
Sex. Asslt - Threat	.002	-0.000 - .004	1.000	.002	-0.000 - .006	1.000
Suspension	.118	.100 - .137	1.343	.234	.180 - .287	1.153
Obscene calls	.070	.053 - .087	1.712	.541	.054 - 1.028	1.073

Analysis Cases = 1,626  
Missing Cases = 99

SELF-REPORTED DELINQUENCY ESTIMATES - 1978

B. MALES, AGED 13 - 19 (N = 918)

OFFENSES	PROPORTION REPORTING ONE OR MORE OFFENSES	.95 CONFIDENCE INTERVAL	DESIGN EFFECTS	MEAN NUMBER OF OFFENSES	.95 CONFIDENCE INTERVAL	DESIGN EFFECTS
Damaged family prop.	.168	.143 - .193	.966	.537	.343 - .730	.852
Damaged school prop.	.155	.128 - .182	1.166	.405	.281 - .529	1.127
Damaged other prop.	.213	.179 - .247	1.470	.620	.465 - .775	.750
Stole motor vehicle	.020	.007 - .032	1.719	.032	.008 - .057	1.578
Stole something GT\$50	.042	.027 - .057	1.190	.108	.042 - .173	1.142
Bought stolen goods	.144	.116 - .171	1.322	.695	.322 - 1.069	1.102
Thrown objects	.445	.396 - .495	2.089	6.771	3.971 - 9.571	1.058
Runaway	.050	.032 - .067	1.343	.074	.044 - .105	1.457
Lied about age	.321	.284 - .358	1.350	4.574	2.703 - 6.444	1.198
Carried hidden weapon	.106	.075 - .136	2.141	5.014	2.002 - 8.026	1.199
Stole something LT\$5	.189	.162 - .216	.987	.937	.577 - 1.298	1.030
Aggravated assault	.067	.050 - .085	1.031	.151	.085 - .217	1.007
Prostitution	.009	.003 - .016	.938	.032	-0.000 - .069	.965
Sexual intercourse	.392	.353 - .432	1.383	9.439	7.234 - 11.643	1.257
Gang fights	.112	.087 - .138	1.403	.320	.173 - .466	1.103
Sold marijuana	.149	.115 - .182	1.874	3.807	1.282 - 6.332	1.132
Cheated/school test	.426	.389 - .462	1.089	2.611	2.075 - 3.147	.662
Hitchhiked	.134	.104 - .165	1.706	2.200	.849 - 3.552	1.311
Stolen from family	.104	.086 - .122	.741	.270	.200 - .340	.634
Sexual assault	.012	.003 - .023	1.722	.015	.003 - .028	1.686
Hit teacher	.096	.070 - .122	1.638	.206	.121 - .291	1.335
Hit parents	.046	.027 - .066	1.804	.085	.042 - .128	1.195
Hit students	.462	.424 - .501	1.265	3.576	2.288 - 4.864	1.140
Disorderly conduct	.361	.317 - .404	1.712	3.497	2.042 - 4.952	1.382
Sold hard drugs	.024	.015 - .034	.816	.642	-0.000 - 1.533	1.048
Joyriding	.065	.046 - .084	1.294	.225	-0.000 - .471	1.081
Liquor for minor	.168	.142 - .195	1.058	1.656	1.063 - 2.249	1.070
Sexually pressured	.031	.018 - .045	1.273	.093	.037 - .149	1.045
Strongarmed students	.039	.023 - .055	1.411	.234	.072 - .396	1.138
Strongarmed teachers	.006	-0.000 - .013	1.772	.010	-0.000 - .024	1.543
Strongarmed others	.029	.016 - .042	1.321	.272	-0.000 - .547	1.052
Evaded payment	.222	.189 - .256	1.376	2.775	.915 - 4.636	1.630

B. MALES, AGED 13 - 19 (continued)

<u>OFFENSES</u>	<u>PROPORTION REPORTING ONE OR MORE OFFENSES</u>	<u>.95 CONFIDENCE INTERVAL</u>	<u>DESIGN EFFECTS</u>	<u>MEAN NUMBER OF OFFENSES</u>	<u>.95 CONFIDENCE INTERVAL</u>	<u>DESIGN EFFECTS</u>
Public drunkenness	.319	.277 - .361	1.724	4.963	3.550 - 6.376	1.338
Stole something \$5-50	.081	.062 - .100	1.045	.408	.165 - .652	1.141
Stole at school	.060	.046 - .075	.815	.227	.012 - .442	.998
Broke into bldg/vehicle	.042	.024 - .059	1.596	.101	.039 - .163	1.553
Panhandled	.023	.012 - .034	1.193	.058	.001 - .115	1.307
Skipped classes	.461	.430 - .491	.804	7.583	4.589 - 10.577	1.416
Didn't return change	.285	.251 - .319	1.192	.830	.660 - 1.001	1.197
Sex. Asslt - Threat	.003	-0.000 - .008	1.000	.005	-0.000 - .010	1.000
Suspension	.160	.135 - .186	1.009	.359	.267 - .452	1.051
Obscene calls	.075	.054 - .097	1.380	.358	.135 - .581	1.175

Analysis Cases = 863  
Missing Cases = 55

# SELF-REPORTED DELINQUENCY ESTIMATES - 1978

C. FEMALES, AGED 13 - 19 (N = 807)

OFFENSES	PROPORTION REPORTING ONE OR MORE OFFENSES	.95 CONFIDENCE INTERVAL	DESIGN EFFECTS	MEAN NUMBER OF OFFENSES	.95 CONFIDENCE INTERVAL	DESIGN EFFECTS
Damaged family prop.	.084	.062 - .105	1.127	.237	.146 - .329	1.096
Damaged school prop.	.067	.050 - .084	.861	.204	.124 - .285	.950
Damaged other prop.	.062	.043 - .081	1.172	.127	.077 - .177	1.145
Stole motor vehicle	0.000	0.000 - 0.000	1.000	0.000	0.000 - 0.000	1.000
Stole something GT\$50	.008	.002 - .014	.953	.018	-0.000 - .039	1.000
Bought stolen goods	.028	.014 - .040	1.196	.068	.025 - .112	1.262
Thrown objects	.248	.209 - .287	1.518	2.130	1.328 - 2.931	1.113
Runaway	.046	.031 - .060	.903	.080	.045 - .114	.818
Lied about age	.308	.272 - .344	1.159	2.489	1.683 - 3.295	1.070
Carried hidden weapon	.014	.006 - .023	.989	1.364	-0.000 - 3.114	1.403
Stole something LT\$5	.096	.071 - .121	1.342	.417	.136 - .698	.944
Aggravated assault	.012	.006 - .018	.550	.017	.006 - .028	.690
Prostitution	0.000	0.000 - 0.000	1.000	0.000	0.000 - 0.000	1.000
Sexual intercourse	.210	.177 - .243	1.211	5.816	3.635 - 7.977	1.109
Gang fights	.041	.031 - .050	.441	.076	.048 - .104	.703
Sold marijuana	.051	.033 - .069	1.241	.652	-0.000 - 1.324	1.138
Cheated/school test	.408	.364 - .451	1.482	2.679	1.987 - 3.369	1.000
Hitchhiked	.041	.025 - .056	1.165	.331	.058 - .604	1.035
Stolen from family	.075	.053 - .096	1.249	1.169	.057 - 2.281	1.044
Sexual assault	0.000	0.000 - 0.000	1.000	0.000	0.000 - 0.000	1.000
Hit teacher	.033	.019 - .046	1.101	.063	.029 - .097	1.165
Hit parents	.054	.036 - .072	1.216	.118	.059 - .177	1.253
Hit students	.183	.142 - .225	2.128	1.459	.148 - 2.770	.970
Disorderly conduct	.256	.212 - .299	1.867	1.979	1.145 - 2.813	1.049
Sold hard drugs	.005	-0.000 - .011	1.000	.022	-0.000 - .052	.993
Joyriding	.022	.010 - .035	1.289	.039	.015 - .063	1.074
Liquor for minor	.081	.057 - .105	1.422	.366	.237 - .494	.860
Sexually pressured	.001	-0.000 - .004	1.000	.004	-0.000 - .012	1.003
Strongarmed students	.008	.001 - .014	.990	.013	.001 - .025	.994
Strongarmed teachers	0.000	0.000 - 0.000	1.000	0.000	0.000 - 0.000	1.000
Strongarmed others	.008	.001 - .014	.987	.012	.002 - .022	.991
Evaded payment	.084	.059 - .109	1.543	.433	.176 - .690	1.201

C. FEMALES, AGED 13 - 19 (continued)

<u>OFFENSES</u>	<u>PROPORTION REPORTING ONE OR MORE OFFENSES</u>	<u>.95 CONFIDENCE INTERVAL</u>	<u>DESIGN EFFECTS</u>	<u>MEAN NUMBER OF OFFENSES</u>	<u>.95 CONFIDENCE INTERVAL</u>	<u>DESIGN EFFECTS</u>
Public drunkenness	.206	.171 - .241	1.416	1.637	.811 - 2.463	1.699
Stole something \$5-50	.030	.021 - .040	.591	.115	.013 - .218	.824
Stole at school	.031	.021 - .042	.651	.104	.012 - .195	.932
Broke into bldg/vehicle	.005	-0.000 - .012	1.464	.010	-0.000 - .027	1.674
Panhandled	.004	.001 - .007	1.000	.007	.001 - .012	.551
Skipped classes	.373	.326 - .420	1.746	3.280	2.561 - 3.999	.993
Didn't return change	.184	.158 - .210	.829	.464	.335 - .592	1.037
Sex. Asslt - Threat	0.000	0.000 - 0.000	1.000	0.000	0.000 - 0.000	1.000
Suspension	.071	.049 - .093	1.389	.092	.057 - .126	1.606
Obscene calls	.063	.042 - .084	1.408	.748	-0.000 - 1.720	.995

Analysis Cases = 763  
Missing Cases = 44

# SELF-REPORTED DELINQUENCY ESTIMATES - 1978

D. WHITES, AGED 13 - 19 (N = 1,361)

OFFENSES	PROPORTION REPORTING ONE OR MORE OFFENSES	.95 CONFIDENCE INTERVAL	DESIGN EFFECTS	MEAN NUMBER OF OFFENSES	.95 CONFIDENCE INTERVAL	DESIGN EFFECTS
Damaged family prop.	.129	.108 - .149	1.179	.396	.267 - .525	1.075
Damaged school prop.	.116	.094 - .137	1.439	.316	.222 - .411	1.359
Damaged other prop.	.148	.123 - .173	1.617	.402	.291 - .512	1.213
Stole motor vehicle	.011	.003 - .018	1.677	.017	.003 - .031	1.685
Stole something GT\$50	.024	.014 - .034	1.350	.053	.018 - .087	1.901
Bought stolen goods	.091	.070 - .112	1.688	.376	.164 - .589	1.259
Thrown objects	.379	.334 - .425	2.745	5.216	3.233 - 7.200	1.166
Runaway	.053	.038 - .069	1.489	.086	.056 - .115	1.265
Lied about age	.329	.299 - .357	1.207	3.776	2.395 - 5.158	1.654
Carried hidden weapon	.056	.038 - .075	2.033	3.209	1.061 - 5.357	1.298
Stole something LT\$5	.157	.132 - .181	1.455	.729	.362 - 1.095	1.964
Aggravated assault	.037	.025 - .049	1.366	.077	.040 - .114	1.443
Prostitution	.003	.000 - .006	1.000	.006	-0.000 - .013	.984
Sexual intercourse	.277	.249 - .304	1.220	7.036	5.211 - 8.862	1.341
Gang fights	.077	.060 - .095	1.379	.207	.114 - .300	1.037
Sold marijuana	.113	.086 - .139	2.277	2.198	.587 - 3.808	1.329
Cheated/school test	.433	.403 - .464	1.206	2.834	2.261 - 3.407	1.030
Hitchhiked	.102	.077 - .127	2.132	1.599	.594 - 2.605	1.585
Stolen from family	.099	.082 - .116	1.039	.828	.171 - 1.485	1.045
Sexual assault	.006	.001 - .011	1.000	.007	.001 - .013	1.000
Hit teacher	.064	.045 - .083	1.845	.143	.082 - .205	1.498
Hit parents	.056	.041 - .071	1.371	.107	.069 - .146	1.211
Hit students	.338	.300 - .375	1.987	2.732	1.499 - 3.966	1.273
Disorderly conduct	.347	.301 - .393	2.938	3.146	2.067 - 4.225	1.456
Sold hard drugs	.014	.006 - .021	1.292	.093	.014 - .173	1.124
Joyriding	.049	.034 - .063	1.477	.157	-0.000 - .324	1.117
Liquor for minor	.145	.121 - .169	1.496	1.190	.746 - 1.633	1.541
Sexually pressured	.014	.006 - .022	1.440	.042	.011 - .074	1.024
Strongarmed students	.020	.011 - .030	1.467	.126	.018 - .233	1.216
Strongarmed teachers	.001	-0.000 - .002	1.000	.001	-0.000 - .002	1.000
Strongarmed others	.015	.008 - .023	1.103	.160	-0.000 - .336	1.001
Evaded payment	.158	.131 - .185	1.717	1.205	.512 - 1.898	1.171

D. WHITES, AGED 13 - 19 (continued)

OFFENSES	PROPORTION REPORTING ONE OR MORE OFFENSES	.95 CONFIDENCE INTERVAL	DESIGN EFFECTS	MEAN NUMBER OF OFFENSES	.95 CONFIDENCE INTERVAL	DESIGN EFFECTS
Public drunkenness	.305	.269 - .341	1.950	4.076	2.927 - 5.226	1.760
Stole something \$5-50	.057	.044 - .070	.979	.273	.088 - .458	1.621
Stole at school	.049	.038 - .059	.797	.190	.031 - .350	1.094
Broke into bldg/vehicle	.028	.016 - .040	1.671	.062	.025 - .099	1.727
Panhandled	.015	.007 - .023	1.439	.039	-0.000 - .079	1.496
Skipped classes	.440	.402 - .479	1.895	6.227	4.135 - 8.318	1.503
Didn't return change	.229	.201 - .256	1.351	.596	.482 - .711	1.221
Sex. Asslt - Threat	.001	-0.000 - .002	1.000	.002	-0.000 - .005	1.000
Suspension	.104	.088 - .121	.921	.204	.148 - .261	1.053
Obscene calls	.073	.054 - .093	1.774	.632	.027 - 1.238	1.062

Analysis Cases = 1,297  
Missing Cases = 64



SELF-REPORTED DELINQUENCY ESTIMATES - 1978

E. BLACKS, AGED 13-19 (N = 260)

OFFENSES	PROPORTION REPORTING ONE OR MORE OFFENSES	.95 CONFIDENCE INTERVAL	DESIGN EFFECTS	MEAN NUMBER OF OFFENSES	.95 CONFIDENCE INTERVAL	DESIGN EFFECTS
Damaged family prop.	.142	.100 - .184	.851	.255	.131 - .380	.958
Damaged school prop.	.088	.052 - .124	.955	.188	.057 - .320	.958
Damaged other prop.	.096	.065 - .128	.659	.339	-0.000 - .718	.999
Stole motor vehicle	.008	-0.000 - .020	.999	.021	-0.000 - .056	1.017
Stole something GT\$50	.021	.001 - .041	1.176	.059	-0.000 - .140	1.067
Bought stolen goods	.071	.037 - .106	1.052	.519	-0.000 - 1.291	1.011
Thrown objects	.238	.186 - .291	.893	1.992	.058 - 3.926	1.534
Runaway	.029	.010 - .048	.745	.042	.008 - .075	.719
Lied about age	.243	.177 - .309	1.382	1.883	.707 - 3.059	1.622
Carried hidden weapon	.092	.059 - .125	.763	3.335	-0.000 - 6.814	.946
Stole something LT\$5	.067	.034 - .100	1.023	.105	.034 - .175	1.154
Aggravated assault	.063	.039 - .086	.552	.084	.040 - .127	.765
Prostitution	.017	.001 - .032	.852	.084	-0.000 - .204	.841
Sexual intercourse	.506	.448 - .564	.784	13.494	8.726 - 18.261	1.135
Gang fights	.063	.032 - .094	.943	.126	.041 - .210	1.128
Sold marijuana	.059	.030 - .088	.852	1.730	-0.000 - 4.800	.969
Cheated/school test	.347	.254 - .441	2.247	1.506	.944 - 2.069	1.033
Hitchhiked	.059	.032 - .085	.741	.319	-0.000 - .713	.837
Stolen from family	.042	.012 - .072	1.330	.105	.005 - .204	.841
Sexual assault	.008	-0.000 - .025	1.956	.008	-0.000 - .025	1.948
Hit teacher	.079	.037 - .122	1.459	.126	.047 - .204	1.325
Hit parents	.013	-0.000 - .027	.990	.059	-0.000 - .160	.985
Hit students	.322	.243 - .402	1.689	2.184	.642 - 3.727	1.342
Disorderly conduct	.142	.093 - .192	1.174	1.452	-0.000 - 3.148	.937
Sold hard drugs	.021	.001 - .041	1.166	.339	-0.000 - .822	.992
Joyriding	.029	.009 - .050	.850	.067	.017 - .117	.730
Liquor for minor	.054	.030 - .079	.687	.138	.020 - .256	1.103
Sexually pressured	.042	.019 - .065	.783	.117	.022 - .212	.816
Strongarmed students	.042	.014 - .070	1.121	.163	-0.000 - .351	1.624
Strongarmed teachers	.017	-0.000 - .040	1.878	.033	-0.000 - .079	1.491
Strongarmed others	.038	.010 - .065	1.238	.142	.014 - .270	.819
Evaded payment	.159	.094 - .224	1.851	2.439	-0.000 - 5.957	3.703

E. BLACKS, AGED 13-19 (continued)

<u>OFFENSES</u>	<u>PROPORTION REPORTING ONE OR MORE OFFENSES</u>	<u>.95 CONFIDENCE INTERVAL</u>	<u>DESIGN EFFECTS</u>	<u>MEAN NUMBER OF OFFENSES</u>	<u>.95 CONFIDENCE INTERVAL</u>	<u>DESIGN EFFECTS</u>
Public drunkenness	.092	.056 - .128	.888	.318	.113 - .523	.945
Stole something \$5-50	.046	.020 - .072	.899	.101	.010 - .192	.941
Stole at school	.025	.003 - .047	1.149	.063	-0.000 - .134	.798
Broke into bldg/vehicle	.013	-0.000 - .027	1.049	.013	-0.000 - .027	1.044
Panhandled	.017	.002 - .031	.768	.021	.002 - .040	.722
Skipped classes	.297	.224 - .370	1.483	2.548	.193 - 4.904	3.043
Didn't return change	.276	.194 - .359	1.986	.854	.403 - 1.305	2.045
Sex. Asslt - Threat	.008	-0.000 - .020	.965	.008	-0.000 - .020	.961
Suspension	.176	.112 - .240	1.645	.339	.174 - .504	1.628
Obscene calls	.050	.026 - .075	.727	.100	.040 - .161	.924

Analysis Cases = 239  
Missing Cases = 21

SELF-REPORTED DELINQUENCY ESTIMATES - 1978

G. OTHER ETHNIC GROUPS, AGED 13-19 (N = 28)

OFFENSES	PROPORTION REPORTING ONE OR MORE OFFENSES	.95 CONFIDENCE INTERVAL	DESIGN EFFECTS	MEAN NUMBER OF OFFENSES	.95 CONFIDENCE INTERVAL	DESIGN EFFECTS
Damaged family prop.	.038			.231		
Damaged school prop.	.154			1.346		
Damaged other prop.	.269			.500		
Stole motor vehicle	.038			.038		
Stole something GT\$50	.115			.115		
Bought stolen goods	.115			.346		
Thrown objects	.115			.500		
Runaway	.038			.115		
Lied about age	.231			.423		
Carried hidden weapon	.077			3.846		
Stole something LT\$5	.308			2.538		
Aggravated assault	.115			.115		
Prostitution	0.000			0.000		
Sexual intercourse	.308			4.692		
Gang fights	.115			.385		
Sold marijuana	.038			4.615		
Cheated/school test	.154			.846		
Hitchhiked	0.000			0.000		
Stolen from family	.038			.038		
Sexual assault	.038			.077		
Hit teacher	.038			.077		
Hit parents	0.000			0.000		
Hit students	.231			1.769		
Disorderly conduct	.192			.500		
Sold hard drugs	0.000			0.000		
Joyriding	.038			.038		
Liquor for minor	.038			.077		
Sexually pressured	0.000			0.000		
Strongarmed students	0.077			.269		
Strongarmed teachers	0.000			0.000		
Strongarmed others	0.000			0.000		
Evaded payment	.077			.269		

G. OTHER ETHNIC GROUPS, AGED 13-19 (continued)

<u>OFFENSES</u>	<u>PROPORTION REPORTING ONE OR MORE OFFENSES</u>	<u>.95 CONFIDENCE INTERVAL</u>	<u>DESIGN EFFECTS</u>	<u>MEAN NUMBER OF OFFENSES</u>	<u>.95 CONFIDENCE INTERVAL</u>	<u>DESIGN EFFECTS</u>
Public drunkenness	.192			.385		
Stole something \$5-50	.077			.192		
Stole at school	.077			.154		
Broke into bldg/vehicle	0.000			0.000		
Panhandled	0.000			0.000		
Skipped classes	.423			5.500		
Didn't return change	.231			1.577		
Sex. Asslt - Threat	0.000			0.000		
Suspension	.192			.515		
Obscene calls	.115			1.269		

Analysis Cases = 26  
Missing Cases = 2

SELF-REPORTED DELINQUENCY ESTIMATES - 1978

H. CLASS I, AGED 13-19 (N = 392)

OFFENSES	PROPORTION REPORTING ONE OR MORE OFFENSES.	.95 CONFIDENCE INTERVAL	DESIGN EFFECTS	MEAN NUMBER OF OFFENSES	.95 CONFIDENCE INTERVAL	DESIGN EFFECTS
Damaged family prop.	.107	.084 - .131	.547	.233	.142 - .324	.795
Damaged school prop.	.097	.065 - .129	1.089	.259	.119 - .399	1.481
Damaged other prop.	.134	.102 - .165	.791	.285	.199 - .371	.691
Stole motor vehicle	.006	-0.000 - .012	.929	.005	-0.000 - .012	.927
Stole something GT\$50	.010	.000 - .021	.926	.013	-0.000 - .027	.935
Bought stolen goods	.050	.021 - .079	1.635	.068	.023 - .113	1.812
Thrown objects	.376	.306 - .447	1.971	3.632	1.961 - 5.302	1.580
Runaway	.024	.008 - .039	.930	.031	.007 - .056	.921
Lied about age	.361	.317 - .405	.784	3.455	2.330 - 4.581	.761
Carried hidden weapon	.029	.011 - .047	1.079	2.987	-0.000 - 6.112	.874
Stole something LT\$5	.134	.100 - .169	.941	.342	.197 - .487	.948
Aggravated assault	.018	.004 - .032	1.031	.034	.004 - .064	.988
Prostitution	.003	-0.000 - .008	1.000	.005	-0.000 - .016	.988
Sexual intercourse	.213	.169 - .257	1.077	5.450	2.323 - 8.577	1.323
Gang fights	.039	.017 - .062	1.282	.084	.021 - .146	1.085
Sold marijuana	.097	.058 - .136	1.603	.433	.183 - .683	1.543
Cheated/school test	.458	.407 - .509	.990	2.796	1.576 - 4.016	1.472
Hitchhiked	.081	.047 - .116	1.489	1.181	-0.000 - 2.671	1.086
Stolen from family	.099	.069 - .130	.989	1.775	-0.000 - 3.855	.981
Sexual assault	.003	-0.000 - .008	1.000	.003	-0.000 - .008	1.000
Hit teacher	.024	.006 - .041	1.256	.042	.005 - .078	1.147
Hit parents	.045	.023 - .066	.994	.065	.028 - .103	.924
Hit students	.259	.209 - .310	1.244	1.861	.154 - 3.569	1.032
Disorderly conduct	.330	.267 - .393	1.661	3.500	1.196 - 5.804	1.044
Sold hard drugs	.013	.001 - .025	1.018	.042	-0.000 - .097	1.004
Joyriding	.039	.014 - .064	1.552	.068	.018 - .118	1.410
Liquor for minor	.154	.114 - .195	1.147	1.709	.436 - 1.983	1.216
Sexually pressured	.010	-0.000 - .021	1.016	.013	-0.000 - .027	1.014
Strongarmed students	.008	-0.000 - .017	1.025	.147	-0.000 - .412	1.000
Strongarmed teachers	.002	-0.000 - .008	1.000	.003	-0.000 - .008	1.000
Strongarmed others	.005	-0.000 - .014	1.050	.010	-0.000 - .025	1.047
Evaded payment	.147	.098 - .195	1.769	1.772	-0.000 - 3.731	.982

H. CLASS I, AGED 13-19 (continued)

<u>OFFENSES</u>	<u>PROPORTION REPORTING ONE OR MORE OFFENSES</u>	<u>.95 CONFIDENCE INTERVAL</u>	<u>DESIGN EFFECTS</u>	<u>MEAN NUMBER OF OFFENSES</u>	<u>.95 CONFIDENCE INTERVAL</u>	<u>DESIGN EFFECTS</u>
Public drunkenness	.297	.251 - .342	.914	3.814	2.595 - 5.032	.784
Stole something \$5-50	.029	.011 - .047	1.112	.068	.000 - .136	.985
Stole at school	.037	.016 - .057	1.136	.076	.024 - .128	1.126
Broke into bldg/vehicle	.008	-0.000 - .017	.999	.008	-0.000 - .017	.996
Panhandled	.013	.001 - .025	1.023	.021	.001 - .041	1.025
Skipped classes	.424	.373 - .475	.999	4.717	3.386 - 6.049	1.224
Didn't return change	.257	.209 - .304	1.122	.599	.437 - .762	.915
Sex. Asslt - Threat	.000	.000 - .000	1.000	.000	.000 - .000	1.000
Suspension	.058	.032 - .083	1.108	.076	.038 - .114	1.038
Obscene calls	.065	.036 - .095	1.321	.495	-0.000 - 1.038	1.505

Analysis Cases = 382  
Missing Cases = 10

# SELF-REPORTED DELINQUENCY ESTIMATES - 1978

## I. CLASS II, AGED 13-19 (N = 509)

OFFENSES	PROPORTION REPORTING ONE OR MORE OFFENSES	.95 CONFIDENCE INTERVAL	DESIGN EFFECTS	MEAN NUMBER OF OFFENSES	.95 CONFIDENCE INTERVAL	DESIGN EFFECTS
Damaged family prop.	.133	.094 - .172	1.580	.374	.256 - .492	.793
Damaged school prop.	.119	.089 - .148	.978	.405	.215 - .596	1.031
Damaged other prop.	.160	.115 - .204	1.722	.514	.250 - .777	1.273
Stole motor vehicle	.017	.003 - .031	1.433	.031	-0.000 - .062	1.355
Stole something GT\$50	.037	.014 - .061	1.775	.085	.012 - .158	1.789
Bought stolen goods	.098	.065 - .130	1.398	.653	.099 - 1.207	1.246
Thrown objects	.368	.315 - .421	1.398	4.996	3.316 - 6.675	.985
Runaway	.066	.045 - .088	.913	.137	.079 - .195	.840
Lied about age	.310	.264 - .355	1.128	3.198	1.368 - 5.027	1.019
Carried hidden weapon	.060	.029 - .091	1.984	3.356	.278 - 6.433	1.356
Stole something LT\$5	.139	.105 - .173	1.136	.911	.362 - 1.459	1.185
Aggravated assault	.037	.014 - .061	1.798	.081	.009 - .153	1.511
Prostitution	.004	-0.000 - .010	1.000	.033	-0.000 - .097	1.005
Sexual intercourse	.295	.252 - .338	1.032	7.457	5.098 - 9.817	1.025
Gang fights	.071	.038 - .103	1.877	.258	.026 - .489	1.067
Sold marijuana	.114	.082 - .146	1.190	2.482	.510 - 4.454	1.253
Cheated/school test	.401	.351 - .450	1.187	1.904	1.443 - 2.365	1.049
Hitchhiked	.096	.060 - .132	1.761	2.204	.162 - 4.246	1.450
Stolen from family	.091	.064 - .118	1.021	.464	.028 - .899	1.009
Sexual assault	.006	-0.000 - .013	.980	.008	-0.000 - .018	.977
Hit teacher	.075	.046 - .104	1.429	.168	.052 - .285	1.429
Hit parents	.062	.035 - .090	1.483	.135	.052 - .218	1.314
Hit students	.347	.290 - .404	1.676	2.058	1.024 - 3.092	1.090
Disorderly conduct	.349	.295 - .403	1.498	2.983	1.276 - 4.691	1.565
Sold hard drugs	.021	.005 - .037	1.455	.146	-0.000 - .319	1.123
Joyriding	.050	.027 - .073	1.335	.289	-0.000 - .738	1.130
Liquor for minor	.121	.090 - .152	1.066	.746	.455 - 1.037	1.060
Sexually pressured	.015	.003 - .027	1.183	.079	-0.000 - .160	.997
Strongarmed students	.031	.009 - .054	1.937	.193	-0.000 - .393	1.774
Strongarmed teachers	0.000	0.000 - 0.000	1.000	0.000	0.000 - 0.000	1.000
Strongarmed others	.027	.010 - .044	1.252	.208	-0.000 - .443	1.060
Evaded payment	.147	.116 - .179	.928	.977	.264 - 1.691	1.286



I. CLASS II, AGED 13-19 (continued)

<u>OFFENSES</u>	<u>PROPORTION REPORTING ONE OR MORE OFFENSES</u>	<u>.95 CONFIDENCE INTERVAL</u>	<u>DESIGN EFFECTS</u>	<u>MEAN NUMBER OF OFFENSES</u>	<u>.95 CONFIDENCE INTERVAL</u>	<u>DESIGN EFFECTS</u>
Public drunkenness	.285	.238 - .332	1.269	4.106	2.214 - 5.998	1.555
Stole something \$5-50	.060	.033 - .087	1.505	.287	.016 - .557	1.389
Stole at school	.056	.031 - .081	1.362	.312	-0.000 - .730	1.196
Broke into bldg/vehicle	.042	.017 - .066	1.825	.112	.023 - .201	1.727
Panhandled	.015	.001 - .028	1.532	.029	.000 - .058	1.471
Skipped classes	.460	.408 - .512	1.280	5.545	3.980 - 7.109	.945
Didn't return change	.196	.157 - .236	1.146	.565	.383 - .746	1.257
Sex. Asslt - Threat	.002	-0.000 - .006	1.000	.004	-0.000 - .013	.991
Suspension	.104	.077 - .132	.940	.243	.117 - .369	1.190
Obscene calls	.079	.054 - .104	1.024	.360	.174 - .545	1.002

Analysis Cases = 481  
Missing Cases = 28

SELF-REPORTED DELINQUENCY ESTIMATES - 1978

J. CLASS III, AGED 13 - 19 (N = 722)

OFFENSES	PROPORTION REPORTING ONE OR MORE OFFENSES	.95 CONFIDENCE INTERVAL	DESIGN EFFECTS	MEAN NUMBER OF OFFENSES	.95 CONFIDENCE INTERVAL	DESIGN EFFECTS
Damaged family prop.	.142	.115 - .169	1.006	.524	.280 - .767	.860
Damaged school prop.	.117	.088 - .146	1.317	.267	.176 - .357	1.140
Damaged other prop.	.132	.103 - .161	1.224	.370	.207 - .532	1.095
Stole motor vehicle	.009	.002 - .016	.960	.015	.000 - .030	1.005
Stole something GT\$50	.024	.013 - .035	.835	.081	.009 - .154	1.040
Bought stolen goods	.105	.082 - .129	.940	.408	.114 - .703	1.058
Thrown objects	.330	.283 - .378	1.669	5.009	1.653 - 8.365	1.051
Runaway	.046	.029 - .063	1.091	.061	.033 - .088	1.276
Lied about age	.287	.240 - .334	1.820	3.994	2.069 - 5.919	1.143
Carried hidden weapon	.074	.048 - .100	1.624	1.975	.471 - 3.478	1.082
Stole something LT\$5	.149	.115 - .184	1.521	.680	.262 - 1.099	1.168
Aggravated assault	.050	.034 - .067	.974	.123	.048 - .198	1.073
Prostitution	.004	-0.000 - .010	1.000	.010	-0.000 - .023	.963
Sexual intercourse	.348	.309 - .388	1.122	8.348	5.672 - 11.025	1.338
Gang fights	.104	.080 - .128	1.020	.231	.163 - .299	.868
Sold marijuana	.098	.067 - .129	1.797	3.375	.376 - 6.374	1.123
Cheated/school test	.414	.369 - .460	1.397	2.839	2.274 - 3.404	.709
Hitchhiked	.086	.061 - .111	1.334	.813	.299 - 1.327	1.089
Stolen from family	.081	.061 - .101	.886	.306	.177 - .435	.996
Sexual assault	.006	-0.000 - .012	1.000	.007	-0.000 - .015	1.037
Hit teacher	.084	.060 - .109	1.291	.163	.101 - .224	1.065
Hit parents	.043	.025 - .060	1.232	.101	.047 - .154	.996
Hit students	.358	.310 - .406	1.680	3.393	1.311 - 5.476	1.378
Disorderly conduct	.283	.232 - .333	2.093	2.358	1.226 - 3.490	1.747
Sold hard drugs	.013	.003 - .023	1.221	.716	-0.000 - 1.846	1.045
Joyriding	.041	.025 - .058	1.082	.070	.040 - .099	.973
Liquor for minor	.117	.090 - .144	1.186	1.284	.641 - 1.927	1.072
Sexually pressured	.018	.007 - .028	1.029	.041	.006 - .077	1.059
Strongarmed students	.027	.014 - .040	1.056	.087	.022 - .153	1.044
Strongarmed teachers	.001	-0.000 - .004	1.000	.001	-0.000 - .004	1.000
Strongarmed others	.015	.003 - .027	1.630	.194	-0.000 - .502	1.048
Evaded payment	.154	.120 - .188	1.428	1.206	.033 - 2.379	3.244

J. CLASS III, AGED 13 - 19 (continued)

<u>OFFENSES</u>	<u>PROPORTION REPORTING ONE OR MORE OFFENSES</u>	<u>.95 CONFIDENCE INTERVAL</u>	<u>DESIGN EFFECTS</u>	<u>MEAN NUMBER OF OFFENSES</u>	<u>.95 CONFIDENCE INTERVAL</u>	<u>DESIGN EFFECTS</u>
Public drunkenness	.240	.194 - .285	1.902	2.735	1.503 - 3.968	1.503
Stole something \$5-50	.062	.048 - .076	.559	.310	.093 - .526	.966
Stole at school	.040	.025 - .054	.900	.121	.011 - .231	1.027
Broke into bldg/vehicle	.024	.012 - .035	.969	.055	.014 - .096	.901
Panhandled	.015	.005 - .024	1.023	.047	-0.000 - .108	.988
Skipped classes	.380	.330 - .430	1.770	5.290	1.673 - 8.906	1.550
Didn't return change	.248	.202 - .293	1.812	.747	.500 - .995	1.738
Sex. Asslt - Threat	.001	-0.000 - .004	1.000	.001	-0.000 - .004	1.000
Suspension	.154	.120 - .188	1.482	.302	.217 - .386	1.108
Obscene calls	.065	.042 - .089	1.464	.741	-0.000 - 1.862	1.047

Analysis Cases = 676  
Missing Cases = 46

SELF-REPORTED DELINQUENCY ESTIMATES - 1978

K. 13 YEAR OLDS (N = 252)

OFFENSES	PROPORTION REPORTING ONE OR MORE OFFENSES	.95 CONFIDENCE INTERVAL	DESIGN EFFECTS	MEAN NUMBER OF OFFENSES	.95 CONFIDENCE INTERVAL	DESIGN EFFECTS
Damaged family prop.	.187	.138 - .236	.933	.610	.150 - 1.070	1.047
Damaged school prop.	.137	.083 - .190	1.424	.212	.132 - .291	.983
Damaged other prop.	.162	.112 - .212	1.098	.328	.204 - .452	1.062
Stole motor vehicle	0.000	0.000 - 0.000	1.000	0.000	0.000 - 0.000	1.000
Stole something GT\$50	.008	-0.000 - .020	.999	.008	-0.000 - .020	.995
Bought stolen goods	.033	.010 - .057	1.005	.058	.010 - .106	.972
Thrown objects	.452	.386 - .518	1.037	5.050	1.992 - 8.108	1.016
Runaway	.033	.011 - .055	.902	.041	.012 - .071	.883
Lied about age	.253	.201 - .305	.834	.879	.625 - 1.134	.652
Carried hidden weapon	.012	-0.000 - .027	1.028	1.079	-0.000 - 5.211	1.050
Stole something LT\$5	.154	.097 - .210	1.446	.307	.151 - .463	1.332
Aggravated assault	.017	.005 - .028	.498	.037	-0.000 - .076	.791
Prostitution	0.000	0.000 - 0.000	1.000	0.000	0.000 - 0.000	1.000
Sexual intercourse	.046	.020 - .072	.903	.117	.019 - .215	.979
Gang fights	.066	.035 - .098	.921	.100	.047 - .153	.912
Sold marijuana	.008	-0.000 - .020	1.016	.021	-0.000 - .055	1.004
Cheated/school test	.419	.356 - .482	.968	1.809	1.256 - 2.362	.726
Hitchhiked	.033	.010 - .056	.979	.083	-0.000 - .174	1.011
Stolen from family	.145	.098 - .193	1.078	1.158	-0.000 - 2.509	1.107
Sexual assault	0.000	0.000 - 0.000	1.000	0.000	0.000 - 0.000	1.000
Hit teacher	.037	.014 - .061	.897	.071	.025 - .117	.653
Hit parents	.041	.014 - .069	1.117	.071	.012 - .129	1.137
Hit students	.419	.354 - .485	1.040	3.237	.248 - 6.225	1.116
Disorderly conduct	.224	.173 - .275	.872	1.614	.421 - 2.807	.897
Sold hard drugs	0.000	0.000 - 0.000	1.000	0.000	0.000 - 0.000	1.000
Joyriding	.017	-0.000 - .034	1.049	.021	-0.000 - .043	1.039
Liquor for minor	.004	-0.000 - .013	1.004	.004	-0.000 - .013	1.000
Sexually pressured	.004	-0.000 - .013	1.004	.004	-0.000 - .013	1.000
Strongarmed students	.046	.017 - .074	1.120	.071	.030 - .110	.704
Strongarmed teachers	.004	-0.000 - .012	.979	.012	-0.000 - .037	.975
Strongarmed others	.008	-0.000 - .020	.982	.008	-0.000 - .020	.978
Evaded payment	.120	.078 - .162	.983	.320	.183 - .456	.780

K. 13 YEAR OLDS (continued)

OFFENSES	PROPORTION REPORTING ONE OR MORE OFFENSES	.95 CONFIDENCE INTERVAL	DESIGN EFFECTS	MEAN NUMBER OF OFFENSES	.95 CONFIDENCE INTERVAL	DESIGN EFFECTS
Public drunkenness	.037	.016 - .059	.761	.062	.018 - .107	.743
Stole something \$5-50	.029	.007 - .051	1.052	.095	-0.000 - .228	1.062
Stole at school	.050	.023 - .076	.862	.071	.020 - .122	.971
Broke into bldg/vehicle	.008	-0.000 - .020	1.024	.008	-0.000 - .020	1.020
Panhandled	.012	-0.000 - .027	1.003	.017	-0.000 - .037	1.011
Skipped classes	.158	.112 - .204	.943	.606	.307 - .905	.771
Didn't return change	.237	.180 - .293	1.033	.647	.396 - .898	1.005
Sex. Asslt - Threat	0.000	0.000 - 0.000	1.000	0.000	0.000 - 0.000	1.000
Suspension	.095	.056 - .135	1.043	.170	.077 - .263	1.052
Obscene calls	.133	.084 - .181	1.195	2.037	-0.000 - 5.094	.991

Analysis Cases = 241  
Missing Cases = 11

SELF-REPORTED DELINQUENCY ESTIMATES - 1978

L. 14 YEAR OLDS (N = 257)

OFFENSES	PROPORTION REPORTING ONE OR MORE OFFENSES	.95 CONFIDENCE INTERVAL	DESIGN EFFECTS	MEAN NUMBER OF OFFENSES	.95 CONFIDENCE INTERVAL	DESIGN EFFECTS
Damaged family prop.	.153	.107 - .199	.993	.466	.257 - .674	1.044
Damaged school prop.	.124	.085 - .164	.890	.418	.192 - .643	.865
Damaged other prop.	.145	.096 - .193	1.165	.386	.198 - .572	1.132
Stole motor vehicle	0.000	0.000 - 0.000	1.000	0.000	0.000 - 0.000	1.000
Stole something GT\$50	.004	-0.000 - .012	.970	.004	-0.000 - .012	.966
Bought stolen goods	.060	.026 - .095	1.274	.108	.041 - .176	1.004
Thrown objects	.407	.343 - .472	1.048	9.185	1.087 - 17.282	.935
Runaway	.048	.019 - .078	1.164	.084	.024 - .145	1.047
Lied about age	.225	.168 - .281	1.114	1.056	.455 - 1.658	1.197
Carried hidden weapon	.052	.024 - .080	.951	4.574	-0.000 - 9.174	.953
Stole something LT\$5	.165	.119 - .210	.906	.695	.248 - 1.141	1.067
Aggravated assault	.036	.014 - .059	.877	.044	.010 - .078	1.044
Prostitution	0.000	0.000 - 0.000	1.000	0.000	0.000 - 0.000	1.000
Sexual intercourse	.145	.100 - .189	.958	.819	.463 - 1.176	.782
Gang fights	.076	.042 - .111	1.019	.173	.072 - .274	1.101
Sold marijuana	.048	.018 - .078	1.174	.763	-0.000 - 1.869	1.228
Cheated/school test	.438	.371 - .505	1.117	2.317	1.620 - 3.015	.801
Hitchhiked	.052	.018 - .086	1.411	.402	-0.000 - .870	1.020
Stolen from family	.104	.067 - .141	.891	.333	.169 - .498	.928
Sexual assault	0.000	0.000 - 0.000	1.000	0.000	0.000 - 0.000	1.000
Hit teacher	.044	.016 - .072	1.139	.100	.029 - .172	1.239
Hit parents	.044	.018 - .070	.983	.072	.020 - .125	1.086
Hit students	.394	.319 - .468	1.424	1.727	.967 - 2.487	.714
Disorderly conduct	.269	.204 - .335	1.328	1.353	.802 - 1.905	.875
Sold hard drugs	.008	-0.000 - .020	1.005	.060	-0.000 - .151	.996
Joyriding	.020	.002 - .038	1.013	.032	.000 - .068	.985
Liquor for minor	.020	-0.000 - .041	1.381	.040	-0.000 - .081	1.054
Sexually pressured	.008	-0.000 - .019	.981	.008	-0.000 - .019	.977
Strongarmed students	.028	.003 - .053	1.354	.137	-0.000 - .316	1.081
Strongarmed teachers	0.000	0.000 - 0.000	1.000	0.000	0.000 - 0.000	1.000
Strongarmed others	.024	.003 - .045	1.098	.277	-0.000 - .695	1.014
Evaded payment	.089	.048 - .130	1.260	.496	.009 - .983	1.271

L. 14 YEAR OLDS (continued)

<u>OFFENSES</u>	<u>PROPORTION REPORTING ONE OR MORE OFFENSES</u>	<u>.95 CONFIDENCE INTERVAL</u>	<u>DESIGN EFFECTS</u>	<u>MEAN NUMBER OF OFFENSES</u>	<u>.95 CONFIDENCE INTERVAL</u>	<u>DESIGN EFFECTS</u>
Public drunkenness	.092	.057 - .128	.897	.916	-0.000 - 2.042	1.012
Stole something \$5-50	.032	.007 - .057	1.205	.048	.010 - .087	1.053
Stole at school	.036	.011 - .061	1.066	.193	-0.000 - .478	1.044
Broke into bldg/vehicle	.020	.002 - .038	.997	.036	.001 - .071	1.000
Panhandled	.012	-0.000 - .026	.975	.024	-0.000 - .054	.982
Skipped classes	.279	.228 - .331	.805	2.084	1.214 - 2.955	.703
Didn't return change	.243	.177 - .309	1.429	.819	.460 - 1.178	1.090
Sex. Asslt - Threat	0.000	0.000 - 0.000	1.000	0.000	0.000 - 0.000	1.000
Suspension	.130	.085 - .174	1.078	.189	.115 - .262	.994
Obscene calls	.138	.081 - .194	1.621	.602	.183 - 1.022	1.732

Analysis Cases = 249  
Missing Cases = 8



# SELF-REPORTED DELINQUENCY ESTIMATES - 1978

M. 15 YEAR OLDS (N = 269)

OFFENSES	PROPORTION REPORTING ONE OR MORE OFFENSES	.95 CONFIDENCE INTERVAL	DESIGN EFFECTS	MEAN NUMBER OF OFFENSES	.95 CONFIDENCE INTERVAL	DESIGN EFFECTS
Damaged family prop.	.155	.104 - .205	1.210	.286	.156 - .415	1.237
Damaged school prop.	.123	.073 - .173	1.435	.345	.045 - .645	1.335
Damaged other prop.	.155	.114 - .195	.773	.333	.240 - .426	.597
Stole motor vehicle	.020	-0.000 - .040	1.349	.024	-0.000 - .049	1.214
Stole something GT\$50	.040	.016 - .063	.880	.060	.016 - .103	.958
Bought stolen goods	.107	.062 - .152	1.324	.484	.026 - .942	1.070
Thrown objects	.413	.348 - .478	1.078	6.040	3.261 - 8.818	1.181
Runaway	.056	.025 - .086	1.075	.103	.038 - .168	1.066
Lied about age	.274	.210 - .338	1.264	1.754	.714 - 2.794	1.140
Carried hidden weapon	.087	.047 - .127	1.244	.210	.080 - .340	1.278
Stole something LT\$5	.112	.071 - .152	1.031	.773	-0.000 - 1.656	1.105
Aggravated assault	.048	.023 - .072	.835	.103	.029 - .177	.973
Prostitution	0.000	0.000 - 0.000	1.000	0.000	0.000 - 0.000	1.000
Sexual intercourse	.218	.162 - .274	1.141	3.440	1.199 - 5.681	.977
Gang fights	.103	.067 - .139	.865	.409	.006 - .811	.935
Sold marijuana	.080	.041 - .119	1.238	1.132	-0.000 - 2.419	1.021
Cheated/school test	.460	.396 - .524	1.015	2.504	1.114 - 3.894	1.058
Hitchhiked	.076	.035 - .117	1.463	1.478	-0.000 - 3.022	1.378
Stolen from family	.095	.056 - .134	1.091	2.079	-0.000 - 5.095	.987
Sexual assault	0.000	0.000 - 0.000	1.000	0.000	0.000 - 0.000	1.000
Hit teacher	.091	.058 - .124	.809	.242	.042 - .442	1.227
Hit parents	.067	.035 - .100	1.031	.139	.044 - .234	.926
Hit students	.389	.327 - .450	.977	5.151	1.326 - 8.976	.986
Disorderly conduct	.298	.238 - .357	1.050	4.234	1.604 - 6.864	.919
Sold hard drugs	.008	-0.000 - .019	.998	.012	-0.000 - .030	.987
Joyriding	.060	.032 - .087	.856	.504	-0.000 - 1.311	1.007
Liquor for minor	.075	.045 - .106	.838	.298	.155 - .440	.642
Sexually pressured	.012	-0.000 - .025	.944	.056	-0.000 - .138	.951
Strongarmed students	.024	.004 - .044	1.066	.361	-0.000 - .816	1.027
Strongarmed teachers	.004	-0.000 - .012	.963	.004	-0.000 - .012	.959
Strongarmed others	.016	.000 - .032	.971	.060	-0.000 - .142	.970
Evaded payment	.175	.121 - .228	1.205	2.075	.293 - 3.858	1.077

M. 15 YEAR OLDS (continued)

<u>OFFENSES</u>	<u>PROPORTION REPORTING ONE OR MORE OFFENSES</u>	<u>.95 CONFIDENCE INTERVAL</u>	<u>DESIGN EFFECTS</u>	<u>MEAN NUMBER OF OFFENSES</u>	<u>.95 CONFIDENCE INTERVAL</u>	<u>DESIGN EFFECTS</u>
Public drunkenness	.206	.152 - .261	1.107	1.647	.460 - 2.834	1.013
Stole something \$5-50	.048	.021 - .075	1.003	.351	-0.000 - .778	1.020
Stole at school	.048	.021 - .074	.968	.452	-0.000 - 1.181	1.010
Broke into bldg/vehicle	.016	-0.000 - .035	1.439	.060	-0.000 - .150	1.145
Panhandled	.012	-0.000 - .026	.984	.012	-0.000 - .026	.980
Skipped classes	.373	.310 - .436	1.030	4.639	1.751 - 7.526	1.067
Didn't return change	.230	.175 - .285	1.052	.472	.294 - .651	1.425
Sex. Asslt - Threat	.004	-0.000 - .012	1.027	.008	-0.000 - .024	1.023
Suspension	.147	.097 - .197	1.233	.468	.203 - .733	1.146
Obscene calls	.067	.033 - .102	1.140	.480	-0.000 - 1.096	1.010

Analysis Cases = 252  
Missing Cases = 17

# SELF-REPORTED DELINQUENCY ESTIMATES - 1978

N. 16 YEAR OLDS (N = 258)

OFFENSES	PROPORTION REPORTING ONE OR MORE OFFENSES	.95 CONFIDENCE INTERVAL	DESIGN EFFECTS	MEAN NUMBER OF OFFENSES	.95 CONFIDENCE INTERVAL	DESIGN EFFECTS
Damaged family prop.	.139	.091 - .187	1.127	.681	.105 - 1.256	1.001
Damaged school prop.	.097	.068 - .125	.553	.227	.107 - .347	.923
Damaged other prop.	.134	.091 - .178	.928	.319	.176 - .463	.867
Stole motor vehicle	.013	-0.000 - .027	.975	.029	-0.000 - .073	.998
Stole something GT\$50	.046	.019 - .073	.958	.134	.024 - .245	.986
Bought stolen goods	.105	.072 - .138	.679	.286	.102 - .469	.918
Thrown objects	.378	.310 - .447	1.162	2.462	1.440 - 3.484	1.069
Runaway	.050	.022 - .079	.958	.063	.026 - .100	.960
Lied about age	.340	.268 - .413	1.365	2.815	1.338 - 4.292	1.554
Carried hidden weapon	.071	.037 - .105	1.012	5.550	-0.000 - 12.342	.956
Stole something LT\$5	.185	.137 - .233	.903	.899	.046 - 1.753	.970
Aggravated assault	.055	.028 - .081	.777	.109	.024 - .177	.944
Prostitution	.013	-0.000 - .027	.983	.071	-0.000 - .197	.959
Sexual intercourse	.371	.297 - .445	1.356	8.418	3.806 - 13.030	1.288
Gang fights	.092	.052 - .133	1.156	.206	.065 - .347	1.189
Sold marijuana	.155	.111 - .199	.858	5.340	.748 - 9.932	.921
Cheated/school test	.529	.471 - .588	.798	4.046	2.368 - 5.725	.765
Hitchhiked	.118	.080 - .155	.785	2.076	-0.000 - 4.707	1.006
Stolen from family	.071	.041 - .102	.803	.424	.052 - .796	.942
Sexual assault	.008	-0.000 - .020	.975	.013	-0.000 - .031	.971
Hit teacher	.092	.064 - .121	.564	.244	.084 - .403	.951
Hit parents	.055	.024 - .085	1.055	.134	.013 - .256	1.038
Hit students	.374	.302 - .446	1.299	2.122	1.275 - 2.969	.975
Disorderly conduct	.336	.273 - .399	1.039	4.693	1.067 - 8.320	1.002
Sold hard drugs	.021	-0.000 - .043	1.349	.261	-0.000 - .572	1.077
Joyriding	.076	.042 - .109	.923	.147	.069 - .225	.894
Liquor for minor	.109	.061 - .158	1.408	1.244	.233 - 2.254	.990
Sexually pressured	.021	-0.000 - .043	1.418	.046	-0.000 - .109	1.271
Strongarmed students	.021	-0.000 - .043	1.323	.126	-0.000 - .320	1.829
Strongarmed teachers	0.000	0.000 - 0.000	1.000	.000	0.000 - .000	1.000
Strongarmed others	.021	-0.000 - .043	1.332	.504	-0.000 - 1.367	1.009
Evaded payment	.164	.115 - .213	1.031	3.324	-0.000 - 7.122	1.103

N. 16 YEAR OLDS (continued)

OFFENSES	PROPORTION REPORTING ONE OR MORE OFFENSES	.95 CONFIDENCE INTERVAL	DESIGN EFFECTS	MEAN NUMBER OF OFFENSES	.95 CONFIDENCE INTERVAL	DESIGN EFFECTS
Public drunkenness	.303	.242 - .363	1.016	3.992	1.556 - 6.427	1.086
Stole something \$5-50	.088	.050 - .127	1.065	.340	-0.000 - .688	.989
Stole at school	.059	.030 - .088	.877	.105	.042 - .168	.964
Broke into bldg/vehicle	.025	.005 - .046	.984	.050	-0.000 - .107	1.003
Panhandled	.013	-0.000 - .027	1.017	.021	-0.000 - .046	.991
Skipped classes	.540	.469 - .611	1.177	6.521	3.769 - 9.273	1.314
Didn't return change	.238	.174 - .303	1.326	.750	.433 - 1.067	1.041
Sex. Asslt - Threat	0.000	0.000 - 0.000	1.000	.000	0.000 - .000	1.000
Suspension	.143	.105 - .182	.712	.235	.158 - .312	.625
Obscene calls	.063	.026 - .100	1.332	.366	.056 - .675	1.031

Analysis Cases = 238  
Missing Cases = 20

SELF-REPORTED DELINQUENCY ESTIMATES - 1978

O. 17 YEAR OLDS (N = 253)

OFFENSES	PROPORTION REPORTING ONE OR MORE OFFENSES	.95 CONFIDENCE INTERVAL	DESIGN EFFECTS	MEAN NUMBER OF OFFENSES	.95 CONFIDENCE INTERVAL	DESIGN EFFECTS
Damaged family prop.	.128	.078 - .178	1.294	.417	.195 - .639	1.104
Damaged school prop.	.162	.140 - .219	1.396	.519	.272 - .767	1.224
Damaged other prop.	.183	.121 - .245	1.456	.494	.263 - .724	1.376
Stole motor vehicle	.021	-0.000 - .044	1.472	.030	-0.000 - .068	1.797
Stole something GT\$50	.043	.013 - .072	1.232	.077	.019 - .134	1.139
Bought stolen goods	.136	.078 - .195	1.676	.506	.242 - .770	1.099
Thrown objects	.292	.216 - .368	1.602	3.798	1.704 - 5.893	1.189
Runaway	.089	.043 - .136	1.535	.149	.047 - .251	1.068
Lied about age	.481	.407 - .555	1.250	8.162	1.110 - 12.214	.982
Carried hidden weapon	.072	.030 - .115	1.555	1.664	-0.000 - 3.441	1.052
Stole something LT\$5	.149	.103 - .195	.967	.804	.463 - 1.145	.830
Aggravated assault	.060	.025 - .094	1.196	.106	.012 - .200	1.023
Prostitution	.008	-0.000 - .013	1.009	.004	-0.000 - .013	1.005
Sexual intercourse	.400	.331 - .469	1.143	7.574	4.808 - 10.340	1.212
Gang fights	.081	.046 - .116	.946	.217	.061 - .373	1.119
Sold marijuana	.166	.109 - .223	1.331	4.540	-0.000 - 11.327	1.095
Cheated/school test	.502	.423 - .581	1.429	3.736	2.549 - 4.923	.860
Hitchhiked	.136	.078 - .195	1.670	2.460	.163 - 4.756	.892
Stolen from family	.106	.061 - .152	1.254	.404	.098 - .710	1.429
Sexual assault	.030	.001 - .058	1.628	.034	-0.000 - .069	1.648
Hit teacher	.111	.065 - .156	1.217	.174	.092 - .257	1.002
Hit parents	.064	.032 - .095	.954	.166	.026 - .306	1.360
Hit students	.323	.249 - .398	1.447	1.621	1.068 - 2.174	.807
Disorderly conduct	.353	.275 - .432	1.550	2.889	1.277 - 4.501	1.539
Sold hard drugs	.030	.007 - .052	1.012	.243	-0.000 - .572	1.007
Joyriding	.060	.026 - .093	1.150	.089	.033 - .145	1.075
Liquor for minor	.157	.111 - .204	.947	1.034	.569 - 1.499	.884
Sexually pressured	.034	.006 - .062	1.360	.060	.007 - .112	1.354
Strongarmed students	.030	.002 - .058	1.576	.136	-0.000 - .299	1.075
Strongarmed teachers	.004	-0.000 - .013	1.009	.004	-0.000 - .013	1.005
Strongarmed others	.017	-0.000 - .041	2.037	.060	-0.000 - .158	1.236
Evaded payment	.226	.165 - .286	1.209	1.711	.228 - 3.194	1.182

O. 17 YEAR OLDS (continued)

<u>OFFENSES</u>	<u>PROPORTION REPORTING ONE OR MORE OFFENSES</u>	<u>.95 CONFIDENCE INTERVAL</u>	<u>DESIGN EFFECTS</u>	<u>MEAN NUMBER OF OFFENSES</u>	<u>.95 CONFIDENCE INTERVAL</u>	<u>DESIGN EFFECTS</u>
Public drunkenness	.391	.317 - .466	1.324	3.634	2.137 - 5.131	1.552
Stole something \$5-50	.085	.045 - .126	1.177	.244	.110 - .377	.728
Stole at school	.064	.031 - .097	1.026	.191	.066 - .317	.965
Broke into bldg/vehicle	.055	.024 - .087	1.107	.123	.031 - .216	1.083
Panhandled	.030	.006 - .053	1.083	.051	.008 - .094	1.077
Skipped classes	.566	.492 - .640	1.272	10.851	2.952 - 18.750	.986
Didn't return change	.230	.170 - .289	1.142	.596	.335 - .857	1.330
Sex. Asslt - Threat	.004	-0.000 - .013	1.009	.004	-0.000 - .013	1.005
Suspension	.145	.101 - .188	.884	.230	.148 - .312	.908
Obscene calls	.038	.014 - .063	.952	.089	.017 - .162	.918

Analysis Cases = 235  
Missing Cases = 18

# SELF-REPORTED DELINQUENCY ESTIMATES - 1978

P. 18 YEAR OLDS (N = 239)

OFFENSES	PROPORTION REPORTING ONE OR MORE OFFENSES	.95 CONFIDENCE INTERVAL	DESIGN EFFECTS	MEAN NUMBER OF OFFENSES	.95 CONFIDENCE INTERVAL	DESIGN EFFECTS
Damaged family prop.	.067	.035 - .098	.875	.102	.050 - .155	.840
Damaged school prop.	.089	.046 - .132	1.233	.258	.067 - .449	1.340
Damaged other prop.	.120	.070 - .170	1.305	.427	.004 - .850	1.089
Stole motor vehicle	.018	-0.000 - .036	1.020	.035	-0.000 - .078	1.043
Stole something GT\$50	.027	.009 - .045	.697	.164	-0.000 - .364	.988
Bought stolen goods	.107	.060 - .154	1.276	1.169	-0.000 - 2.442	1.081
Thrown objects	.258	.198 - .318	1.036	2.862	.577 - 5.148	1.065
Runaway	.031	.008 - .054	.939	.062	.011 - .114	.931
Lied about age	.382	.312 - .453	1.155	8.170	2.089 - 14.151	1.412
Carried hidden weapon	.084	.042 - .127	1.270	7.738	1.634 - 13.841	.981
Stole something LT\$5	.147	.101 - .193	.932	.711	.072 - 1.350	.943
Aggravated assault	.049	.023 - .075	.777	.178	-0.000 - .365	.958
Prostitution	.004	-0.000 - .013	1.009	.013	-0.000 - .040	1.005
Sexual intercourse	.511	.454 - .569	.724	16.018	10.199 - 21.837	1.031
Gang fights	.080	.041 - .119	1.136	.209	.054 - .364	1.089
Sold marijuana	.138	.091 - .186	1.050	3.263	-0.000 - 6.817	1.035
Cheated/school test	.342	.269 - .416	1.319	2.920	2.115 - 3.725	.385
Hitchhiked	.120	.068 - .172	1.386	.751	.265 - 1.237	.826
Stolen from family	.067	.037 - .096	.780	.156	.043 - .268	.949
Sexual assault	0.000	0.000 - 0.000	1.000	0.000	0.000 - 0.000	1.000
Hit teacher	.053	.023 - .083	.981	.080	.020 - .140	1.076
Hit parents	.040	.010 - .070	1.320	.058	.003 - .113	1.149
Hit students	.249	.195 - .303	.848	1.418	.272 - 2.564	1.411
Disorderly conduct	.364	.297 - .432	1.095	2.484	1.301 - 3.668	1.048
Sold hard drugs	.027	.007 - .046	.807	1.893	-0.000 - 5.268	1.043
Joyriding	.062	.033 - .091	.780	.098	.051 - .145	.715
Liquor for minor	.293	.239 - .348	.787	2.996	1.412 - 4.579	1.086
Sexually pressured	.018	.000 - .036	.993	.027	-0.000 - .055	.987
Strongarmed students	.018	-0.000 - .040	1.565	.036	-0.000 - .079	1.282
Strongarmed teachers	.004	-0.000 - .014	1.009	.004	-0.000 - .014	1.005
Strongarmed others	.022	-0.000 - .046	1.448	.062	-0.000 - .132	1.320
Evaded payment	.182	.120 - .244	1.417	2.591	-0.000 - 6.008	1.072



F. 18 YEAR OLDS (continued)

<u>OFFENSES</u>	<u>PROPORTION REPORTING ONE OR MORE OFFENSES</u>	<u>.95 CONFIDENCE INTERVAL</u>	<u>DESIGN EFFECTS</u>	<u>MEAN NUMBER OF OFFENSES</u>	<u>.95 CONFIDENCE INTERVAL</u>	<u>DESIGN EFFECTS</u>
Public drunkenness	.446	.372 - .521	1.218	8.420	4.856 - 11.983	1.331
Stole something \$5-50	.076	.046 - .105	.666	.511	-0.000 - 1.027	.938
Stole at school	.049	.021 - .077	.903	.102	.032 - .172	.958
Broke into bldg/vehicle	.031	.012 - .051	.690	.098	-0.000 - .210	.901
Panhandled	.013	-0.000 - .029	1.029	.107	-0.000 - .287	.990
Skipped classes	.600	.526 - .674	1.262	9.084	6.084 - 12.085	1.085
Didn't return change	.249	.202 - .296	.647	.742	.432 - 1.052	.967
Sex. Asslt - Threat	0.000	0.000 - 0.000	1.000	0.000	0.000 - 0.000	1.000
Suspension	.120	.084 - .156	.666	.213	.115 - .312	.850
Obscene calls	.013	-0.000 - .029	1.002	.027	-0.000 - .058	.997

Analysis Cases = 225  
Missing Cases = 14

# SELF-REPORTED DELINQUENCY ESTIMATES - 1978

Q. 19 YEAR OLDS (N = 197)

OFFENSES	PROPORTION REPORTING ONE OR MORE OFFENSES	.95 CONFIDENCE INTERVAL	DESIGN EFFECTS	MEAN NUMBER OF OFFENSES	.95 CONFIDENCE INTERVAL	DESIGN EFFECTS
Damaged family prop.	.048	.019 - .078	.844	.140	.009 - .271	.849
Damaged school prop.	.049	.017 - .080	.987	.157	.005 - .308	1.002
Damaged other prop.	.081	.037 - .124	1.156	.457	-0.000 - .989	.973
Stole motor vehicle	0.000	0.000 - 0.000	1.000	0.000	0.000 - 0.000	1.000
Stole something GT\$50	.011	-0.000 - .026	.980	.011	-0.000 - .026	.975
Bought stolen goods	.075	.030 - .120	1.324	.210	.025 - .394	1.084
Thrown objects	.226	.161 - .291	1.105	1.699	.840 - 2.558	.907
Runaway	.022	.001 - .042	.927	.022	.001 - .042	.922
Lied about age	.247	.182 - .313	1.048	2.763	1.058 - 4.468	1.074
Carried hidden weapon	.059	.024 - .094	1.011	3.785	-0.000 - 8.407	1.052
Stole something LT\$5	.097	.048 - .147	1.252	.659	.032 - 1.287	.994
Aggravated assault	.022	-0.000 - .043	1.004	.043	-0.000 - .101	1.034
Prostitution	.016	-0.000 - .035	1.003	.038	-0.000 - .082	1.006
Sexual intercourse	.535	.461 - .609	.991	22.097	13.608 - 30.586	1.382
Gang fights	.043	.012 - .074	1.042	.091	.023 - .160	.993
Sold marijuana	.140	.084 - .195	1.165	1.226	.546 - 1.905	1.066
Cheated/school test	.172	.113 - .231	1.104	.833	.335 - 1.332	1.051
Hitchhiked	.108	.066 - .149	.814	2.253	-0.000 - 4.798	.972
Stolen from family	.027	.007 - .046	.660	.043	.005 - .081	.794
Sexual assault	.011	-0.000 - .026	1.024	.011	-0.000 - .026	1.018
Hit teacher	.027	.004 - .050	.950	.032	.003 - .062	.942
Hit parents	.032	-0.000 - .070	2.084	.048	-0.000 - .109	1.863
Hit students	.113	.075 - .150	.639	2.613	-0.000 - 6.630	1.012
Disorderly conduct	.349	.290 - .409	.711	2.043	1.172 - 2.914	.894
Sold hard drugs	.016	-0.000 - .035	1.014	.043	-0.000 - .102	.991
Joyriding	.016	-0.000 - .035	1.025	.032	-0.000 - .079	1.036
Liquor for minor	.285	.217 - .353	1.028	2.199	.881 - 3.517	.981
Sexually pressured	.027	.009 - .045	.550	.188	-0.000 - .385	.906
Strongarmed students	0.000	0.000 - 0.000	1.000	0.000	0.000 - 0.000	1.000
Strongarmed teachers	.005	-0.000 - .016	1.001	.016	-0.000 - .049	.996
Strongarmed other	.027	.004 - .050	.950	.054	.001 - .106	.985
Evaded payment	.151	.107 - .200	.881	1.215	.380 - 2.050	.959

Q. 19 YEAR OLDS (continued)

<u>OFFENSES</u>	<u>PROPORTION REPORTING ONE OR MORE OFFENSES</u>	<u>.95 CONFIDENCE INTERVAL</u>	<u>DESIGN EFFECTS</u>	<u>MEAN NUMBER OF OFFENSES</u>	<u>.95 CONFIDENCE INTERVAL</u>	<u>DESIGN EFFECTS</u>
Public drunkenness	.452	.378 - .525	.984	6.339	3.756 - 8.922	.960
Stole something \$5-50	.043	.016 - .070	.803	.344	-0.000 - .906	.981
Stole at school	.016	-0.000 - .034	.959	.016	-0.000 - .034	.954
Broke into bldg/vehicle	.016	-0.000 - .035	.992	.032	-0.000 - .079	1.025
Panhandled	.005	-0.000 - .016	1.027	.005	-0.000 - .016	1.017
Skipped classes	.452	.373 - .530	1.124	5.737	3.796 - 7.677	.745
Didn't return change	.237	.174 - .299	.995	.570	.359 - .781	.831
Sex. Asslt - Threat	.005	-0.000 - .016	1.023	.005	-0.000 - .016	1.017
Suspension	.027	.003 - .051	.972	.086	-0.000 - .176	.942
Obscene calls	.016	-0.000 - .035	1.025	.022	-0.000 - .048	1.033

Analysis Cases = 186  
Missing Cases = 11

**END**