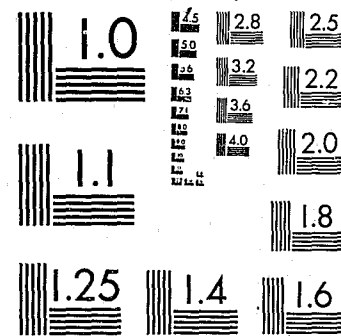


National Criminal Justice Reference Service

ncjrs

This microfiche was produced from documents received for inclusion in the NCJRS data base. Since NCJRS cannot exercise control over the physical condition of the documents submitted, the individual frame quality will vary. The resolution chart on this frame may be used to evaluate the document quality.



MICROCOPY RESOLUTION TEST CHART
NATIONAL BUREAU OF STANDARDS-1963-A

Microfilming procedures used to create this fiche comply with the standards set forth in 41CFR 101-11.504.

Points of view or opinions stated in this document are those of the author(s) and do not represent the official position or policies of the U. S. Department of Justice.

National Institute of Justice
United States Department of Justice
Washington, D. C. 20531

DATE FILMED

12/01/81

**TEXAS
BOARD OF PARDONS
AND PAROLES**

**THIRTY-THIRD
ANNUAL
STATISTICAL REPORT**

September 1, 1979 through August 31, 1980



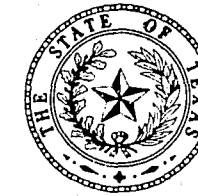
P. O. Box 13401
711 Stephen F. Austin Building
Austin, Texas 78711

77127

BOARD MEMBERS:
CONNIE L. JACKSON, CHAIRMAN
RUBEN M. TORRES, VICE-CHAIRMAN
GEORGE G. KILLINGER, Ph.D., MEMBER

KEN CASNER
EXECUTIVE DIRECTOR

JOHN E. CLARK, ADMINISTRATOR
INTERSTATE PAROLE COMPACT



BOARD OF PARDONS AND PAROLES
17TH AND CONGRESS
STEPHEN F. AUSTIN BUILDING, ROOM 711
P.O. BOX 13401, CAPITOL STATION
AUSTIN, TEXAS 78711
(512) 475-4525

August 31, 1980

PAROLE COMMISSIONERS:

NORTHERN UNITS
CHARLES G. SHANDERA
DONN D. WOOLERY
KEN COLEMAN
PAUL MANSMANN

2503 LAKE ROAD
HUNTSVILLE, TEXAS 77340
(713) 291-2161

SOUTHERN UNITS
HELEN COPITKA
GLENN T. HECKMANN

P.O. BOX 1207
ANGLETON, TEXAS 77515
(713) 849-3031

Honorable William P. Clements, Jr., Governor

Honorable Joe R. Greenhill, Chief
Justice of the Supreme Court

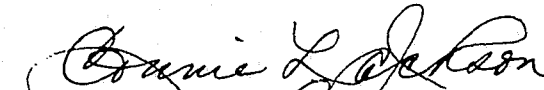
Honorable John F. Onion, Jr., Presiding Judge
of the Court of Criminal Appeals

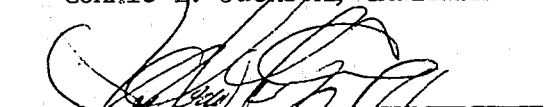
Members of the Senate and House of Representatives
of the State of Texas

Gentlemen:

In compliance with the provisions of Article 42.12, Section 13
of the Code of Criminal Procedure of Texas, we respectfully submit
the Annual Report with Statistical and other data relating to the
work of the Board of Pardons and Paroles for the fiscal year
ending August 31, 1980.

Sincerely yours,


Connie L. Jackson, Chairman


Ruben M. Torres, Vice-Chairman


George G. Killinger, Ph.D., Member

U.S. Department of Justice 77127
National Institute of Justice

This document has been reproduced exactly as received from the
person or organization originating it. Points of view or opinions stated
in this document are those of the authors and do not necessarily
represent the official position or policies of the National Institute of
Justice.

Permission to reproduce this copyrighted material has been
granted by
Ken Casner, Executive Director
Texas Board of Parole

to the National Criminal Justice Reference Service (NCJRS).

Further reproduction outside of the NCJRS system requires permis-
sion of the copyright owner.

NCJRS

APR 13 1981

ACQUISITIONS

August 31, 1980

TEXAS BOARD OF PARDONS AND PAROLES

BOARD MEMBERS

Ruben M. Torres Appointed by Honorable Dolph Briscoe Governor State of Texas Member since 1979	Connie L. Jackson Chairman Appointed by Honorable Joe R. Greenhill Chief Justice Texas Supreme Court Member since 1977	George G. Killinger, Ph.D. Appointed by Honorable John F. Onion Presiding Judge Court of Criminal Appeals Member since 1977
---	--	--

John E. Clark, Interstate Probation and Parole Compact
Administrator

PAROLE COMMISSIONERS

Glenn Heckmann Appointed 1980	Helen Copitka Appointed 1975	Paul J. Mansmann Appointed 1975
Donn D. Woolery Appointed 1980	Kenneth Coleman Appointed 1978	Charles G. Shandera Appointed 1975
by Honorable William P. Clements, Jr. Governor State of Texas	by Honorable Joe R. Greenhill Chief Justice Texas Supreme Court	by Honorable John F. Onion Presiding Judge Court of Criminal Appeals

STAFF

Ken Casner, Executive Director		
Robert Tapscott Director of Field Services	Nelson Fayette Director of Institutional Services	Gladys Sommers Director of Staff Services
Henry Johnson Director of Personnel	E. E. Hagedorn Budget Officer	P. Jack Duncan Director of Computer Services
Charls Walker General Counsel	George Cross Director of Board and Commissioner Services	Sara May Information Specialist

TEXAS BOARD OF PARDONS AND PAROLES

P.O. Box 13401
711 Stephen F. Austin Building
17th and Congress
Austin, Texas 78711
Phone: (512) 475-4525

TABLE OF CONTENTS

	Page
Letter of Transmittal	i
Current Board and Staff	ii
PART I SUMMARY INTRODUCTION	
Function of the Agency	3
The Board	3
Parole Commissioners	3
Parole Panel	4
The Staff of the Agency	4
PART II EXPENDITURE ANALYSIS	
Expenditures and Encumbrances by Activity	9
Grant Expenditures and Encumbrances	9
Expenditures per Releasee	10
PART III STATISTICAL DATA	
Summary Chart of Parole Panel Activity in Fiscal Year	13
Table 1—Administrative Activity During Fiscal Year	15
Table 2—Classification of Parole Actions in Fiscal Year	15
Table 3—Parole Panel Actions over a Five-year Period	16
Table 4—Revocation of Paroles, Conditional Pardons and Mandatory Supervision Cases Applicable to Inmates Released During the Fiscal Year	17
Table 5—Revocation of Paroles, Conditional Pardons and Mandatory Supervision Status Applicable to All Releasees Under Board's Jurisdiction During Fiscal Year	17
Table 6—Revocation of Paroles and Mandatory Supervision Status Applicable to All Releasees Under Active Field Supervision During Fiscal Year	17
Table 7—Revocation of Paroles, Conditional Pardons and Mandatory Supervision Status Applicable to Average Number Under Board's Jurisdiction During Fiscal Year	18
Table 8—Revocation of Paroles and Mandatory Supervision Status Applicable to Average Number of Releasees Under Active Field Supervision During Fiscal Year	18

Table 9—Revocation of Paroles and Mandatory Supervision Status Applicable to Average Number of Releasees Not Actively Supervised During Fiscal Year	18
Table 10—Revocation of Paroles, Conditional Pardons and Mandatory Supervision Status During 33-year Period	19
Table 11—Parole Revocation Data for a Five-year Period	19
Table 12—Mandatory Supervision Revocation Data for a Five-year Period	19
Table 13—Causes for 1,682 Revocations This Fiscal Year and Length of Time Inmates Had Remained on Parole or Conditional Pardon Before Revocation	20
Table 14—Causes for 162 Revocations This Fiscal Year and Length of Time Inmates Had Remained on Mandatory Supervision Before Revocation	20
Table 15—Parole-related Activity Part A: Actions on Parole Panel Recommendations Submitted to Governor During Fiscal Year	21
Part B: Actions Taken This Fiscal Year on Parole Panel Recommendations Submitted to Governor Prior to This Fiscal Year	22
Table 16—Mandatory Supervision-related Activity Part A: Actions on Parole Panel Recommendations Submitted to Governor During Fiscal Year	23
Part B: Actions Taken This Fiscal Year on Parole Panel Recommendations Submitted to Governor Prior to this Fiscal Year	23
Table 17—Executive Clemency-related Activity Part A: Actions on Executive Clemency Recommendations Submitted to Governor During Fiscal Year	24
Part B: Actions Taken This Fiscal Year on Executive Clemency Recommendations Submitted to Governor Prior to This Fiscal Year	24
Table 18—Number of Releasees Under Jurisdiction of Board as of End of Fiscal Year	25
Table 19—Number of Releasees Under Jurisdiction of Board for a Five-year Period	25

Table 20—Number of Releasees Under Active Supervision of Texas Parole Officers as of End of Fiscal Year	26
Table 21—Number of Releasees Under Active Supervision of Texas Parole Officers for a Five-year Period	26
Table 22—Interstate Compact Case Status as of End of Fiscal Year	26
Table 23—Interstate Compact Case Status over a Five-year Period	27
Table 24—Breakdown of Texas Department of Corrections Releases over a Five-year Period	27
Table 25—Previous Criminal Record of 5,022 Inmates Released on Parole or Conditional Pardon During the Fiscal Year	28
Table 26—Previous Criminal Record of 2,140 Inmates Released on Mandatory Supervision During the Fiscal Year	30
Table 27—Age of 5,022 Inmates Released on Parole or Conditional Pardon During the Fiscal Year	32
Table 28—Age of 2,140 Inmates Released on Mandatory Supervision During the Fiscal Year	32
Table 29—Sex of 5,022 Inmates Released on Parole or Conditional Pardon During the Fiscal Year	33
Table 30—Sex of 2,140 Inmates Released on Mandatory Supervision During the Fiscal Year	33
Table 31—Education of 5,022 Inmates Released on Parole or Conditional Pardon During the Fiscal Year	34
Table 32—Education of 2,140 Inmates Released on Mandatory Supervision During the Fiscal Year	35
Table 33—5,022 Inmates Released on Parole or Conditional Pardon During the Fiscal Year Classified According to Type of Crime Committed and Length of Sentence Received	36
Table 34—2,140 Inmates Released on Mandatory Supervision During the Fiscal Year Classified According to Type of Crime Committed and Length of Sentence Received	37

Table 35—1,682 Inmates Whose Paroles or Conditional Pardons Were Revoked During the Fiscal Year Classified According to Crime Committed and Length of Sentence Received	38
Table 36—162 Inmates Whose Mandatory Supervision was Revoked During the Fiscal Year Classified According to Crime Committed and Length of Sentence Received	39
Table 37—5,022 Inmates Released on Parole or Conditional Pardon During the Fiscal Year Classified According to Length of Sentence Received and Percentage of Time Accredited to Sentence at Time of Release	40
Table 38—Disposition of Out-of-State Applications for Acceptance of Parolee Supervision in Texas Classified According to Requesting State	41
Table 39—Present Status of 85,553 Inmates Released from the Texas Department of Corrections on Parole or Conditional Pardon During 33-year Period	42
Table 40—Present Status of 2,889 Inmates Released from the Texas Department of Corrections on Mandatory Supervision During Three-year Period	44
Map Showing Distribution of 10,145 Parolees Assigned to Texas Counties as of August 31, 1980	45
Map Showing Distribution of 1,788 Mandatory Supervision Releasees Assigned to Texas Counties as of August 31, 1980	47
Glossary	49

PART I

SUMMARY INTRODUCTION TO THE BOARD OF PARDONS AND PAROLES

Summary Introduction to the Board of Pardons and Paroles

FUNCTION OF THE AGENCY

The Texas Board of Pardons and Paroles is the constitutional authority for the State of Texas which performs two broad functions: (1) administering the Statewide Parole and Mandatory Supervision System in accordance with Article 42.12, Code of Criminal Procedure (Adult Probation, Parole and Mandatory Supervision Law); and (2) investigating and recommending acts of executive clemency by the governor as provided by the Texas Constitution, Article IV, Section 11 and the Code of Criminal Procedure, Articles 42.12, 48.01 and 40.04.

Parole functions include determining which prisoners are to be paroled from institutions operated by the Texas Department of Corrections (TDC), establishing the conditions of parole, investigating and supervising all prisoners released on parole, conducting parole revocation hearings and recommending appropriate disposition to the governor, establishing necessary parole policy within the statutory limits and carrying out the provisions of the Interstate Parole and Probation Compact. Both parole and executive clemency acts require the affirmative action of the Board of Pardons and Paroles and the governor before relief can be given.

Executive clemency includes emergency reprieves of execution of the death penalty, commutations of sentence from death to lesser punishment, commutations of prison sentences or fines or both, full pardons, restorations of civil rights lost as a result of felony convictions, conditional pardons, trial reprieves of all jail sentences, remissions of bond forfeitures and restorations of the right to drive and operate a motor vehicle.

The system of mandatory supervision, created by the 65th Legislature, provides a period of post-prison supervision for all other releasees of the Texas Department of Corrections who are not otherwise released to parole or conditional pardon and who have not completed the full calendar time on their sentence. A prisoner released to mandatory supervision is deemed as if on parole. Mandatory supervision affects only those felons whose offenses were committed on or after August 29, 1977.

THE BOARD

The Board of Pardons and Paroles is composed of three full-time, salaried members. One is appointed by the governor, one by the chief justice of the Texas Supreme Court and one by the presiding judge of the Court of Criminal Appeals as provided in Article 4, Section 11 of the Texas Constitution. All appointments must be confirmed by the Senate and have a concurrence of two-thirds of the members present. All are for overlapping six-year terms of office. Members must have been residents and citizens of the state for not less than two years immediately preceding appointment. The Board is the administrative head of the agency and provides the rules and policies of the agency.

The Board is in session Monday through Friday of each week at the agency headquarters, 711 Stephen F. Austin Building, Austin, Texas, and convenes otherwise at the call of the chairman. All meetings of the Board are conducted in compliance with the Open Meetings Act. All minutes of the Board and decisions relating to parole, pardon and clemency are matters of public record. However, information concerning individuals applying for or on parole or the identity of other individuals connected with a parole or clemency case is privileged and is not public information.

PAROLE COMMISSIONERS

Article 42.12, C.C.P., provides for the appointment of six commissioners to aid and assist the Board in matters of parole decisions and mandatory supervision revocation. Parole commissioners do not

exercise authority in acts of executive clemency nor in the administration of the agency. Parole commissioners are subject to the rules and regulations of the agency as established by the Board.

Two parole commissioners are appointed by the governor, two by the chief justice of the Supreme Court, and two by the presiding judge of the Court of Criminal Appeals. All appointments are for overlapping six-year terms. One commissioner appointed by each of the appointing authorities must reside in Walker County, where the headquarters of the Texas Department of Corrections is located. Two parole commissioners are officed in Angleton and four are located in Huntsville. Parole commissioners are full-time, salaried employees of the state.

PAROLE PANEL

In matters of parole selection, release on mandatory supervision and revocation, the Board members and parole commissioners may act in panels of three persons as provided in Art. 42.12, C.C.P. Panel composition is designated by the Board. A majority of each panel constitutes a quorum for the transaction of its business, and its decision is by majority vote. The parole panel may recommend the granting or denying of parole and may conduct parole and mandatory supervision revocation hearings.

THE STAFF OF THE AGENCY

The staff of the agency, totaling 530 employees, is divided into four areas of responsibility headed by an executive director.

The Executive Director

The executive director of the agency is responsible for the operation and administration of the various functions of the agency. The executive director is one and the same as the director of parole supervision provided in Article 42.12, C.C.P. He is appointed by the Board and serves at its pleasure.

Institutional Services Division

The Institutional Services Division is composed of a director and staff responsible for providing direct pre-parole services to the inmate population of TDC. Institutional parole officers serve all 18 units of the Texas Department of Corrections, prepare pre-parole summaries on inmates eligible for parole consideration and offer counseling and assistance to prospective parolees. The three institutional parole offices are located in Huntsville, Angleton and Palestine.

Field Services Division

The Field Services Division is composed of a director and staff who are responsible for providing supervision and assistance to parolees and mandatory supervision releasees and for conducting pre-parole investigations of eligible inmates. Texas is divided into eight geographical regions for the purposes of providing supervision and parole services. The eight regional offices are located in Dallas, Houston, San Antonio, Lubbock, Fort Worth, Angleton, Tyler and Waco. More than 230 district parole officers located at the 37 district offices throughout the state are responsible for supervision of nearly 12,000 active parolees and mandatory supervision releasees in the state, including compact parolees from other states residing in Texas. District parole officers are additionally responsible for reporting parole violation that may lead to the revocation of parole or mandatory supervision.

Staff Services Division

The Staff Services Division is composed of a director and subordinate staff who provide all the functions necessary to support the operations of the agency. Primary among these are the parole, mandatory supervision and executive clemency clerical functions in the compilation and maintenance of 53,999 active case files, the preparation of all cases for review by the commissioners and Board members plus the correspondence related to the processing of the cases. Other support functions include accounting and fiscal services, purchasing, warehousing, mail and messenger services, business management, planning and central reception.

Computer Services Division

The Computer Services Division, composed of a director and subordinate staff, provide all automated data processing support for the agency.

PART II
EXPENDITURE DATA

**EXPENDITURES AND ENCUMBERANCES BY ACTIVITY
FISCAL YEAR 1980
FUND I**

ACTIVITY		EXPENDED/ ENCUMBERED
1. Administration		\$ 622,586.60
a. Board member salaries	\$105,899.76	
b. Commissioner salaries	194,400.00	
c. Interstate compact	2,400.00	
d. Administrative services	319,886.84	
2. Support services		935,851.42
3. Executive clemency		98,416.88
4. Parole selection		1,066,619.74
5. Parole supervision		5,618,538.63
6. Renovation of William T. Moore Office Building, Huntsville		4,531.14
	TOTAL STATE FUNDS	<u>\$8,346,544.41</u>

**GRANT EXPENDITURES AND ENCUMBERANCES
GOVERNOR'S CRIMINAL JUSTICE DIVISION GRANTS
FISCAL YEAR 1980**

CJD GRANTS		EXPENDED/ ENCUMBERED
1. Halfway House Program		\$ 653,252.39
2. Aid in determining disposition		259,359.31
3. Training		71,137.57
4. Parole Profile Project		24,789.62
	TOTAL GRANT FUNDS	<u>\$1,008,538.89</u>

**EXPENDITURES PER RELEASEE
STATE FUNDS
FISCAL YEAR 1980**

JURISDICTION

Average number parolees under jurisdiction:	15,055
Average number mandatory supervision releasees under jurisdiction:	<u>1,323</u>
TOTAL	16,378

State funds expended = \$8,346,544.41

Annual expenditures per releasee under jurisdiction = \$509.62

SUPERVISION

Average number parolees under supervision:	10,469
Average number mandatory supervision releasees under supervision:	<u>1,150</u>
TOTAL	11,619

State funds expended for supervision = \$5,618,538.63

Annual expenditures per releasee under supervision = \$483.56

**PART III
STATISTICAL DATA**

**SUMMARY CHART OF PAROLE PANEL
ACTIVITY DURING THE FISCAL YEAR
ENDING AUGUST 31, 1980**

A. PAROLE ACTIONS (Tables 2, 3 & 15)	
1. Number of cases considered	19,432
2. Number of parolees/conditional pardons recommended to governor ¹	7,886
3. Number of inmates paroled/conditionally pardoned	5,018
B. MANDATORY SUPERVISION ACTIONS (Table 16)	
1. Number of inmates released to mandatory supervision	2,140
C. PAROLE REINSTATEMENT ACTIONS (Table 15)	
1. Number of reinstatement cases considered	4
2. Number of reinstatements recommended to the governor	4
3. Number of paroles reinstated	4
D. PAROLE PRE-REVOCATION ACTIONS (Table 15)	
1. Number of pre-revocation warrant considerations ²	2,605
2. Number of pre-revocation warrant issuances recommended to the governor	2,605
3. Number of pre-revocation warrants issued	2,664
4. Number of pre-revocation warrants withdrawn	593
E. MANDATORY SUPERVISION PRE-REVOCATION ACTIONS (Table 16)	
1. Number of pre-revocation warrant considerations ²	427
2. Number of pre-revocation warrant issuances recommended to the governor	427
3. Number of pre-revocation warrants issued	434
4. Number of pre-revocation warrants withdrawn	56
F. PAROLE REVOCATION ACTIONS (Tables 4-15)	
1. Number of revocations recommended to the governor	1,697
2. Number of paroles revoked	1,682
G. MANDATORY SUPERVISION REVOCATION ACTIONS (Tables 4-14 & 16)	
1. Number of revocations recommended to the governor	163
2. Number of mandatory supervision cases revoked	162
H. OTHER PAROLE PANEL CONSIDERATIONS	
1. Preliminary investigation cases considered	0
2. Special administrative review considerations ³	38
3. Other parole administrative reviews ⁴	5,719
4. Other mandatory supervision administrative reviews ⁴	478
I. EXECUTIVE CLEMENCY ACTIONS (Table 17)	
1. Number of executive clemency cases considered	3,341
2. Number of executive clemency cases recommended to the governor	174
3. Number of executive clemency acts granted by the governor	132

¹The conditional pardons included in the parole data are conditional pardons to the United States Immigration Service for foreign nationals.

²The pre-revocation warrant consideration data contains only those considerations that resulted in a positive recommendation to the governor.

³A special administrative case is one reviewed by a parole panel to determine if the case merits special review because of new and pertinent material presented.

⁴These data contain, in addition to other considerations, those pre-revocation warrant considerations that resulted in a negative finding; no recommendation was made to the governor.

TABLE 1

ADMINISTRATIVE ACTIVITY DURING FISCAL YEAR
YEAR ENDING AUGUST 31, 1980

	Year's Totals	Monthly Average
Visitors before the Board	885	74
Case-connected	723	60
Miscellaneous	162	14
Total mail handled by Board	184,497	15,375
Mail received	80,608	6,717
Mail sent	103,889	8,657

TABLE 2

CLASSIFICATION OF PAROLE ACTIONS IN FISCAL
YEAR ENDING AUGUST 31, 1980

Review Classification	Number Considered	Number FI	Number Set-off	Number Serve-all
Initial reviews	9,712 (100%)	3,635 (37%)	4,470 (46%)	1,607 (17%)
Subsequent reviews	9,720 (100%)	4,614 (47%)	3,383 (35%)	1,723 (18%)
TOTAL REVIEWS	19,432 (100%)	8,249 (42%)	7,853 (41%)	3,330 (17%)

TABLE 3
PAROLE PANEL ACTIONS
OVER A FIVE-YEAR PERIOD

Action	FY 76	FY 77	FY 78	FY 79	FY 80	5-Year Avg. 1976-1980
Cases	16,796 (100%)	21,754 (100%)	16,922 (100%)	20,691 (100%)	19,432 (100%)	19,119 (100%)
FI	5,629 (34%)	8,854 (41%)	5,633 (33%)	10,544 (51%)	8,249 (42%)	7,782 (41%)
Set-off	7,882 (47%)	9,666 (44%)	8,163 (48%)	7,670 (37%)	7,853 (41%)	8,247 (43%)
Serve-all	3,285 (19%)	3,234 (15%)	3,120 (19%)	2,477 (12%)	3,330 (17%)	3,089 (16%)
Paroled ¹	4,248 ² (25%)	7,580 ² (35%)	4,948 ³ (29%)	7,741 ³ (37%)	5,018 ³ (26%)	5,907 (31%)

¹Includes conditional pardons to United States Immigration Service.

²Number of parole certificates issued.

³Number of parolees released (reinstatements not included).

TABLE 4
REVOCATION OF PAROLES, CONDITIONAL PARDONS AND MANDATORY
SUPERVISION CASES APPLICABLE TO INMATES RELEASED DURING THE
FISCAL YEAR ENDING AUGUST 31, 1980

Status	No. Released FY 80	Revoked FY 80	Percentage Revoked
Parole	5,022	131	2.6%
Mandatory Supervision	2,140	48	2.2%

TABLE 5
REVOCATION OF PAROLES, CONDITIONAL PARDONS AND MANDATORY
SUPERVISION STATUS APPLICABLE TO ALL RELEASEES UNDER BOARD'S
JURISDICTION DURING ALL OR PART OF FISCAL YEAR ENDING AUGUST 31, 1980

Status	No. Releasees Under Jurisdiction During FY 80	No. Releasees Revoked FY 80	Percentage Revoked
Parole	20,509	1,682	8.2%
Mandatory Supervision	2,844	162	5.7%

TABLE 6
REVOCATION OF PAROLES AND MANDATORY SUPERVISION STATUS
APPLICABLE TO ALL RELEASEES UNDER ACTIVE FIELD SUPERVISION
DURING ALL OR PART OF FISCAL YEAR ENDING AUGUST 31, 1980

Status	No. Releasees Under Supervision During FY 80	No. of Field Supervised Releasees Revoked FY 80	Percentage Revoked
Parole	16,975	1,648	9.7%
Mandatory Supervision	2,742	160	5.8%

TABLE 7

REVOCATION OF PAROLES, CONDITIONAL PARDONS AND MANDATORY
SUPERVISION STATUS APPLICABLE TO AVERAGE NUMBER UNDER BOARD'S
JURISDICTION DURING THE FISCAL YEAR ENDING AUGUST 31, 1980

Status	Average No. Under Jurisdiction During Fiscal Year	No. Revoked	Percentage Revoked
Parole	15,055	1,682	11.2%
Mandatory Supervision	1,323	162	12.2%

TABLE 8

REVOCATION OF PAROLES AND MANDATORY SUPERVISION STATUS
APPLICABLE TO AVERAGE NUMBER OF RELEASEES UNDER ACTIVE FIELD
SUPERVISION DURING FISCAL YEAR ENDING AUGUST 31, 1980

Status	Average No. Under Active Supervision During Fiscal Year	No. Revoked	Percentage Revoked
Parole	10,410	1,648	15.8%
Mandatory supervision	1,202	160	13.3%

TABLE 9

REVOCATION OF PAROLES AND MANDATORY SUPERVISION STATUS
APPLICABLE TO AVERAGE NUMBER OF RELEASEES NOT ACTIVELY SUPERVISED
DURING THE FISCAL YEAR ENDING AUGUST 31, 1980

Status	Average No. of Releasees in a Non- supervised Status During Fiscal Year	No. Revoked	Percentage Revoked
Parole	4,646	34	0.7%
Mandatory supervision	121	2	1.7%

TABLE 10

REVOCATION OF PAROLES, CONDITIONAL PARDONS AND MANDATORY
SUPERVISION STATUS APPLICABLE TO INMATES RELEASED DURING
THE 33-YEAR PERIOD ENDING AUGUST 31, 1980

Status	No. Released	No. Revoked	Percentage Revoked
Parole	85,553	21,019	24.6%
Mandatory supervision	2,889	178	6.2%

TABLE 11

PAROLE REVOCATION DATA FOR A FIVE-YEAR PERIOD

Item	FY 1976	FY 1977	FY 1978	FY 1979	FY 1980
No. under jurisdiction for all or part of year	13,778	17,342	17,597	20,288	20,509
No. paroles revoked during year	838	934	1,465	1,266	1,682
Percentage revoked	6.1%	5.4%	8.3%	6.2%	8.2%

TABLE 12

MANDATORY SUPERVISION REVOCATION DATA FOR A FIVE-YEAR PERIOD

Item	FY 1976	FY 1977	FY 1978	FY 1979	FY 1980
No. under jurisdiction for all or part of year	0	0	10	746	2,844
No. mandatory supervision revoked during year	0	0	0	16	162
Percentage revoked	0	0	0	2.1%	5.7%

TABLE 13

CAUSES FOR 1,682 REVOCATIONS THIS FISCAL YEAR AND LENGTH
OF TIME INMATES HAD REMAINED ON PAROLE OR CONDITIONAL
PARDON BEFORE REVOCATION

	To Texas Prison	To Other Prison	Other Violations, No Conviction	Total
Less than 1 year	255	2	277	534 ¹
More than 1 year, less than 2 years	360	14	385	759
More than 2 years, less than 3 years	83	3	152	238
More than 3 years, less than 4 years	35	1	48	84
More than 4 years, less than 5 years	5	3	23	31
More than 5 years, less than 6 years	7		13	20
More than 6 years, less than 7 years	4		1	5
More than 7 years, less than 8 years	3	1	3	7
More than 8 years, less than 9 years	1			1
More than 9 years, less than 10 years				
More than 10 years	1	1	1	3
TOTAL PAROLES AND CONDITIONAL PARDONS REVOKED	754	25	903	1,682

¹131 of these revocations were applicable to inmates released this fiscal year.

TABLE 14

CAUSES FOR 162 REVOCATIONS THIS FISCAL YEAR AND LENGTH OF TIME
INMATES HAD REMAINED ON MANDATORY SUPERVISION
BEFORE REVOCATION

	To Texas Prison	To Other Prison	Other Violations, No con- viction	Total
Less than 1 year	59	2	59	120 ¹
More than 1 year, less than 2 years	18	2	21	41
More than 2 years, less than 3 years			1	1
More than 3 years, less than 4 years				
More than 4 years, less than 5 years				
More than 5 years, less than 6 years				
More than 6 years, less than 7 years				
More than 7 years, less than 8 years				
More than 8 years, less than 9 years				
More than 9 years, less than 10 years				
More than 10 years				
TOTAL MANDATORY SUPERVISION CASES	77	4	81	162

¹67 revocations of mandatory supervision were applicable to inmates released this fiscal year.

TABLE 15

PAROLED-RELATED ACTIVITY

PART A:

ACTIONS ON PAROLE PANEL RECOMMENDATIONS SUBMITTED TO
THE GOVERNOR DURING FISCAL YEAR ENDING AUGUST 31, 1980

Description	Number Recom- mended	Granted by Governor	Refused by Governor	With- drawn by Board	Number Cases in Process	Number Actions Effectuated
Paroles:						
Within state	7,225	4,411	1,860	202	998	4,124 ¹
Out-of-state	595	312	169	29	118	290 ¹
Out-of-county						
conditional pardons	66	53	10	3	21	25 ¹
Total paroles	7,886	4,776	2,039	234	1,137⁶	4,439¹
Reinstatements of parole	4	4	0	0	0	4²
Pre-revocation warrants:						
Pre-revocation warrants	2,605	2,603	0	395	0	2,603 ³
Emergency arrest warrants	318	318	0	5	0	318 ⁸
Parole revocations	1,697	1,682	0	0	15	1,682⁴
TOTAL PAROLE- RELATED ACTIONS	12,192	9,065	2,039	364	1,152	8,723

Note: The following Fiscal Year 1980 paroles granted by the governor were not effectuated:

Number	Classifications
86	Within state
10	Out-of-state
7	Out-of-country conditional pardons
103	TOTAL

NOTE: To obtain total listed actions effectuated during the fiscal year the actions in Tables 15A and 15B must be added together. To obtain total parole and conditional pardon releases the parole total must be added to the reinstatement total.

TABLE 15
PAROLE-RELATED ACTIVITY

PART B:

ACTIONS TAKEN DURING THE FISCAL YEAR ENDING AUGUST 31, 1980, ON
PAROLE PANEL RECOMMENDATIONS SUBMITTED TO THE GOVERNOR PRIOR
TO THIS FISCAL YEAR

Description	Number Recom- mended	Granted by Governor	Refused by Governor	With- drawn by Board	Number Pending Approval	Actions Effected
Paroles:						
Within state	513	322	183	8	0	525 ¹
Out-of-state	59	34	19	6	0	48 ¹
Out-of-county						
conditional pardons ⁵	3	3	0	0	0	6 ¹
Total paroles	575	359	202	14	0	579 ¹
Reinstatements of parole	0	0	0	0	0	0 ²
Pre-revocation warrants:						
Pre-revocation						
warrants	61	61	0	193 ⁷	0	61 ³
Emergency arrest						
warrants	0	0	0	0	0	0 ⁸
Parole revocations	0	0	0	0	0	0 ⁴
TOTAL PAROLE- RELATED ACTIONS	636	420	202	207	0	640

Note: The following Fiscal Year 1980 paroles granted by the governor were not effected:

Number	Classifications
7	Within state
1	Out-of-state
3	Out-of-country conditional pardons
11	TOTAL

Footnotes to Table 15 A & B:

¹Number of inmates paroled or conditionally pardoned.

²Number of paroles reinstated.

³Number of pre-revocation warrants issued.

⁴Number of paroles revoked.

⁵The conditional pardons included in parole data are conditional pardons to the United States Immigration Service in the case of foreign nationals.

⁶Includes 237 cases also shown in "Granted by Governor" columns.

⁷Includes 179 withdrawals of warrants granted in previous years.

⁸Emergency arrest warrants are non-additive; they are included in the pre-revocation warrant counts.

TABLE 16
MANDATORY SUPERVISION-RELATED ACTIVITY

PART A:

ACTIONS ON MANDATORY SUPERVISION RECOMMENDATIONS SUBMITTED
TO THE GOVERNOR DURING FISCAL YEAR ENDING AUGUST 31, 1980

Description	Number Recom- mended	Granted by Governor	Refused by Governor	With- drawn by Board	Number Cases in Process	Number Actions Effected
Releases:						
Within state	—	—	—	14	—	2,013 ¹
Out-of-state	—	—	—	0	—	93 ¹
Out-of-county	—	—	—	2	—	34 ¹
Total releases	—	—	—	16	—	2,140 ¹
Pre-revocation:						
Pre-revocation						
warrants	427	427	0	56	0	427 ²
Emergency arrest						
warrants	52	52	0	1	0	52 ⁴
MS revocations	163	162	0	0	1	162 ³
TOTAL MS- RELATED ACTIONS	590	589	0	72	1	2,729

PART B:

ACTIONS DURING FISCAL YEAR ENDING AUGUST 31, 1980,
ON MANDATORY SUPERVISION
RECOMMENDATIONS SUBMITTED TO THE GOVERNOR PRIOR TO THIS FISCAL

Description	Number Recom- mended	Granted by Governor	Refused by Governor	With- drawn by Board	Number Cases in Process	Number Actions Effected
Pre-revocation warrants	7	7	0	0	0	7 ²
TOTAL MS- RELATED ACTIONS	7	7	0	0	0	7 ²

Footnotes to Table 16 A & B:

¹Number of inmates released to mandatory supervision.

²Number of pre-revocation warrants issued.

³Number of mandatory supervision cases revoked.

⁴Emergency arrest warrants are non-additive; they are included in the pre-revocation warrant count.

TABLE 17
EXECUTIVE CLEMENCY-RELATED ACTIVITY

PART A:

ACTIONS ON EXECUTIVE CLEMENCY RECOMMENDATIONS SUBMITTED TO GOVERNOR DURING THE FISCAL YEAR ENDING AUGUST 31, 1980

Description	Number Considered	Number Recommended	Approved by Governor	Refused by Governor	Withdrawn by Board	Number Cases in Process	Number Actions Effectuated
Commutation of Sentences	26	26	10	2	0	14	10
Emergency Reprieves	2	2	1	0	1	0	1
Bond forfeiture	2	2	1	0	1	0	1
Full pardons and/or restoration of civil rights	3,311	144	112	11	0	21	112
TOTAL CLEMENCY-RELATED ACTIONS	3,341	174	124	13	2	35	124

PART B

ACTIONS TAKEN DURING THE FISCAL YEAR ENDING AUGUST 31, 1980, ON EXECUTIVE CLEMENCY RECOMMENDATIONS SUBMITTED TO THE GOVERNOR PRIOR TO THIS FISCAL YEAR

Description	Number Recommended	Approved by Governor	Refused by Governor	Withdrawn by Board	Number Cases in Process	Number Actions Effectuated
Commutation of sentences	2	2	0	0	0	2
Full pardons and/or restoration of civil rights	7	6	1	0	0	6
TOTAL CLEMENCY-RELATED ACTIONS	9	8	1	0	0	8

TABLE 18

NUMBER OF RELEASEES UNDER JURISDICTION OF THE BOARD AS OF END OF FISCAL YEAR ENDING AUGUST 31, 1980

Texas parolees reporting to parole officers in Texas	8,958
Texas MS releasees reporting to parole officers in Texas	1,788
Texas parolees out-of-state	1,076
Texas MS releasees out-of-state	92
Texas parolees released to detainers ¹	1,289
Texas MS releasees released to detainers	78
Texas parolees in an annual report status	2,446
Texas MS releasees in an annual report status	0
Texas parolees released from reporting	249
Texas MS releasees released from reporting	0
Texas parolees released to special caseload	9
Texas MS releasees released to special caseload	1
Texas parolees in an absconder status	1,106
Texas MS releasees in an absconder status	143
TOTAL NUMBER UNDER JURISDICTION	17,235

¹Includes conditional pardons to USIS.

TABLE 19

NUMBER OF RELEASEES UNDER JURISDICTION OF THE BOARD AS OF AUGUST 31 FOR A FIVE-YEAR PERIOD

Classification	FY 76	FY 77	FY 78	FY 79	FY 80
Parolees ¹	9,762	13,079	12,538	15,487	15,133
MS releasees	0	0	7	704	2,102
TOTALS	9,762	13,079	12,545	16,191	17,235

¹Includes conditional pardons to USIS.

TABLE 20

**NUMBER OF RELEASEES UNDER ACTIVE SUPERVISION
OF TEXAS PAROLE OFFICERS AS OF END OF FISCAL
YEAR ENDING AUGUST 31, 1980**

Texas parolees in Texas	8,958
Texas MS releasees in Texas	1,788
Other state parolees in Texas	1,187
TOTAL NUMBER UNDER SUPERVISION	11,933

TABLE 21

**NUMBER OF RELEASEES UNDER ACTIVE SUPERVISION OF
TEXAS PAROLE OFFICERS AS OF AUGUST 31
FOR A FIVE-YEAR PERIOD**

Classification	FY 76	FY 77	FY 78	FY 79	FY 80
Parolees	7,081	9,894	9,293	11,731	10,145
MS releasees	0	0	7	653	1,788
TOTALS	7,081	9,894	9,300	12,384	11,933

TABLE 22

**INTERSTATE COMPACT CASE STATUS AS OF
END OF FISCAL YEAR ENDING AUGUST 31, 1980**

Classification	Parole/MS	Probation	Total
Texas cases in other states	1,168	4,476	5,644
Other state cases in Texas	1,187	2,558	3,745
TOTAL	2,355	7,034	9,389

TABLE 23

**INTERSTATE COMPACT CASES STATUS AS OF
AUGUST 31 OVER A FIVE-YEAR PERIOD**

	FY 76		FY 77		FY 78		FY 79		FY 80	
Classification	MS/ Parole	Proba- tion	MS/ Parole	Proba- tion	MS/ Parole	Proba- tion	MS/ Parole	Proba- tion	MS/ Parole	Proba- tion
Texas cases in other states	715	2,138	905	2,707	918	3,308	1,117	3,841	1,168	4,476
Other state cases in Texas	928	1,775	958	2,024	997	2,426	1,042	2,246	1,187	2,558
Annual totals	1,643	3,913	1,863	4,731	1,915	5,734	2,159	6,087	2,355	7,034
ANNUAL GRAND TOTALS	5,556		6,594		7,649		8,246		9,389	

TABLE 24

**BREAKDOWN OF TDC RELEASES
OVER A FIVE-YEAR PERIOD**

Fiscal Year	Total	Discharged	Paroled	Released To Mandatory Supervision
1976	7,702 (100%)	3,454 (45%)	4,248 (55%)	0 (0%)
1977	10,733 (100%)	3,583 (33%)	7,150 (67%)	0 (0%)
1978	8,605 (100%)	3,647 (42%)	4,948 (58%)	10 (0%)
1979	11,528 ¹ (100%)	3,039 (26%)	7,750 ¹ (67%)	739 (7%)
1980	9,592 ¹ (100%)	2,430 (25%)	5,022 ¹ (52%)	2,140 (22%)

¹Includes reinstatements.

TABLE 25

**PREVIOUS CRIMINAL RECORD OF 5,022 INMATES
RELEASED TO PAROLE DURING THE FISCAL YEAR ENDING
AUGUST 31, 1980,
CLASSIFIED ACCORDING TO ETHNIC GROUP**

Previous Criminal Record	Ethnic Group			Total
	White	Black	Hispanic	
<u>Texas Convictions:</u>				
Prisons:				
One	122	160	64	346
Two	21	27	14	62
Three	2	2	2	6
Four		1		1
Five		1		1
Eight	1			1
*Reformatories:				
One	98	94	35	227
Two	28	15	8	51
Three	6	7	2	15
Four	1	2		3
Five		1		1
Prisons and reformatories:				
One prison and one reformatory	8	10	5	23
One prison and two reformatories	5	4	3	12
One prison and three reformatories	2	1	3	6
One prison and five reformatories			1	1
Two prisons and one reformatory	4	5	1	10
Two prisons and two reformatories	3			3
Three prisons and one reformatory		3		3
Seven prisons and six reformatories	1			1
TOTAL TEXAS CONVICTIONS	302	333	138	773
<u>Out-of-state convictions:</u>				
Prisons:				
One	65	60	38	163
Two	12	12	11	35
Three	4	5	2	11
Four	1	1	2	4
Five		1		1

(Table 25 continued)

Previous Criminal Record	Ethnic Group			Total
	White	Black	Hispanic	
*Reformatory:				
One	21	8	2	31
Two	1	4	1	6
Three	1		1	2
Seven	2	1		3
TOTAL OUT-OF-STATE CONVICTIONS	107	92	57	256
Texas and out-of-state convictions:				
Prisons:				
One Texas and one out-of-state	7	13	7	27
One Texas and two out-of-state	5	6	5	16
One Texas and three out-of-state		4	2	6
One Texas and four out-of-state		1	1	2
Two Texas and one out-of-state	3	3	5	11
Two Texas and two out-of-state	1	1		2
Two Texas and three out-of-state	2			2
Two Texas and five out-of-state	1			1
Three Texas and one out-of-state		2		2
Three Texas and two out-of-state	1			1
Three Texas and three out-of-state		1		1
Prisons and reformatory	24	14	9	47
Total Texas and out-of-state convictions	44	45	29	118
Total inmates released with previous convictions	453	470	224	1,147
Total inmates released with no previous conviction	1,705	1,499	669	3,875
TOTAL INMATES RELEASED	2,158	1,969	895	5,022

*Youth or adult institutions.

Table 26

**PREVIOUS CRIMINAL RECORD OF 2,140 INMATES
RELEASED ON MANDATORY SUPERVISION DURING THE FISCAL YEAR ENDING
AUGUST 31, 1980**

Previous Criminal Record	Ethnic Group			Total
	White	Black	Hispanic	
<u>Texas Convictions:</u>				
Prisons:				
One	178	238	92	508
Two	50	39	10	99
Three	9	11	1	21
Four	5	2		7
Five	1	1		2
Six	2	1		3
Seven	2	1		3
*Reformatories:				
One				
Two	49	39	21	109
Three	14	12	2	28
Four	5	6	2	13
Five	2			2
Seven		1	1	2
	2			2
Prisons and reformatories:				
One prison and one reformatory	21	25	16	62
One prison and two reformatories	8	11	3	22
One prison and three reformatories	4	5	1	10
One prison and four reformatories		1		1
One prison and six reformatories		1		1
One prison and seven reformatories		1		1
Two prisons and one reformatory	7	6	4	17
Two prisons and two reformatories	3	1	2	6
Two prisons and three reformatories		1	1	2
Two prisons and four reformatories			1	1
Three prisons and one reformatory	3	1		4
Three prisons and two reformatories	3	1		4
Five prisons and one reformatory	1			1
Five prisons and four reformatories		1		1
Six prisons and one reformatory	1			1
TOTAL TEXAS CONVICTIONS	370	406	157	933

(Table 26 continued)

	Ethnic Group			
Previous Criminal Record	White	Black	Hispanic	Total
<u>Out-of-state convictions:</u>				
Prisons:				
One	55	27	12	94
Two	16	12	2	30
Three	7	1	3	11
Four	1	2		3
Five	1			1
Seven	2			2
Nine	1			1
Reformatories				
One	10	2	1	13
Two	7	1	1	9
Three	1	1		2
Five			1	1
<u>Out-of-state prisons and reformatories:</u>				
One prison and one reformatory	1	1		2
Two prisons and two reformatories		1		1
Four prisons and two reformatories	1			1
TOTAL OUT-OF-STATE CONVICTIONS	103	48	20	171
<u>Texas and out-of-state convictions:</u>				
Prisons:				
One Texas and one out-of-state	16	25	11	52
One Texas and two out-of-state	7	4	6	17
One Texas and three out-of-state	2	3		5
One Texas and four out-of-state	1			1
Two Texas and one out-of-state	10	6	1	17
Two Texas and two out-of-state	5	2	1	8
Two Texas and three out-of-state	1	2	2	5
Three Texas and one out-of-state	1	2		3
Three Texas and two out-of-state		2	1	3
Three Texas and three out-of-state		1		1
Four Texas and one out-of-state	2			2
Five Texas and one out-of-state	1			1
Prisons and reformatories	42	20	5	67
Total Texas and out-of-state convictions	88	67	27	182
Total inmates released with previous convictions	561	521	204	1,286
Total inmates released with no previous convictions	360	338	156	854
TOTAL RELEASED	921	859	360	2,140

*Youth or adult institutions.

TABLE 27

AGE OF 5,022 INMATES RELEASED TO PAROLE DURING THE
FISCAL YEAR ENDING AUGUST 31, 1980,
CLASSIFIED ACCORDING TO ETHNIC GROUP

Age Group	Ethnic Group			Total
	White	Black	Hispanic	
17 to 20 inclusive				
21 to 25 inclusive	496	345	180	1,021
26 to 30 inclusive	811	728	304	1,843
31 to 40 inclusive	391	471	192	1,054
41 to 50 inclusive	283	330	155	768
51 to 60 inclusive	115	65	51	231
61 to 70 inclusive	54	25	11	90
71 to 80 inclusive	8	4	2	14
81 to 90 inclusive	0	1	0	1
TOTAL INMATES RELEASED	2,158	1,969	895	5,022

TABLE 28

AGE OF 2,140 INMATES RELEASED TO MANDATORY SUPERVISION
DURING THE FISCAL YEAR ENDING AUGUST 31, 1980,
CLASSIFIED ACCORDING TO ETHNIC GROUP

Age Group	Ethnic Group			Total
	White	Black	Hispanic	
17 to 20 inclusive				
21 to 25 inclusive	131	166	68	365
26 to 30 inclusive	276	251	129	656
31 to 40 inclusive	176	203	67	446
41 to 50 inclusive	191	166	58	415
51 to 60 inclusive	93	43	28	164
61 to 70 inclusive	40	27	9	76
71 to 80 inclusive	13	3	1	17
81 to 90 inclusive	1	0	0	1
TOTAL INMATES RELEASED	921	859	360	2,140

TABLE 29

SEX OF 5,022 INMATES RELEASED TO PAROLE DURING THE
FISCAL YEAR ENDING AUGUST 31, 1980,
CLASSIFIED ACCORDING TO ETHNIC GROUP

Sex	Ethnic Group			Total
	White	Black	Hispanic	
Male	1,997	1,786	850	4,633
Female	161	183	45	389
TOTAL INMATES RELEASED	2,158	1,969	895	5,022

TABLE 30

SEX OF 2,140 INMATES RELEASED ON MANDATORY SUPERVISION DURING THE
FISCAL YEAR ENDING AUGUST 31, 1980,
CLASSIFIED ACCORDING TO ETHNIC GROUP

Sex	Ethnic Group			Total
	White	Black	Hispanic	
Male	870	773	348	1,996
Female	51	81	12	144
TOTAL INMATES RELEASED	921	859	360	2,140

TABLE 31

EDUCATION OF 5,022 INMATES RELEASED TO PAROLE DURING
THE FISCAL YEAR ENDING AUGUST 31, 1980,
CLASSIFIED ACCORDING TO ETHNIC GROUP

Grade Completed*	Ethnic Group			Total
	White	Black	Hispanic	
None	3	5	21	29
First	1	2	3	6
Second	6	3	11	20
Third	9	12	18	39
Fourth	8	9	24	41
Fifth	21	16	32	69
Sixth	63	42	77	182
Seventh	96	70	97	263
Eighth	244	159	146	549
Ninth	257	282	124	663
Tenth	216	357	71	644
Eleventh	145	291	32	468
Twelfth	890	555	194	1,639
First year of college	102	78	26	206
Second year of college	58	62	13	133
Third year of college	12	11	3	26
Fourth year of college	22	10	2	34
Five or more years of college	5	5	1	11
TOTAL WHOSE EDUCATION IS KNOWN	2,158	1,969	895	5,022

*Not verified: Information obtained from inmates' statements.

TABLE 32

EDUCATION OF 2,140 INMATES RELEASED ON MANDATORY SUPERVISION DURING
THE FISCAL YEAR ENDING AUGUST 31, 1980,
CLASSIFIED ACCORDING TO ETHNIC GROUP

Grade Completed*	Ethnic Group			Total
	White	Black	Hispanic	
None	2	5	7	14
First	3	1	2	6
Second	5	4	7	16
Third	13	7	19	39
Fourth	7	4	11	22
Fifth	17	15	14	46
Sixth	32	20	42	94
Seventh	50	43	48	141
Eighth	111	72	62	245
Ninth	134	124	54	312
Tenth	78	164	25	267
Eleventh	56	129	15	200
Twelfth	353	226	52	631
First year of college	28	21	1	50
Second year of college	15	14	1	30
Third year of college	5	4	0	9
Fourth year of college	10	5	0	15
Five or more years of college	2	1	0	3
TOTAL WHOSE EDUCATION IS KNOWN	921	859	360	2,140

*Not verified: Information obtained from inmates' statements.

TABLE 33

5,022 INMATES RELEASED TO PAROLE DURING THE FISCAL YEAR
ENDING AUGUST 31, 1980, CLASSIFIED ACCORDING TO
TYPE OF CRIME COMMITTED AND LENGTH OF SENTENCE RECEIVED

Crime	Length of Sentence in Years																Total
	1 to 2	2 to 3	3 to 4	4 to 5	5 to 6	6 to 7	7 to 8	8 to 9	9 to 10	10 to 15	15 to 20	20 to 30	30 to 40	40 to 50	50 to 60	60 & Up	
Arson		1	2		3					2							8
Assault		13	17	8	16	7	5	3	1	14		1					85
Assault murder											2	2					4
Assault rape		1								1		2			1		5
Assault robbery				1	1	1											3
Breaking & entering			1	1	1											1	4
Burglary	1	213	195	129	440	102	79	78	11	140	26	8		1		3	1,426
Burglary *PRNT		53	67	38	70	18	15	20	2	29	6	2		2		2	324
Carrying firearms		7	11	6	10		3	1		3							41
Driving w/o owner's consent		50	49	19	30	5	5	4		5							167
DWI	2	41	23	7	11	1											85
Embezzlement							1										1
Escape			1	3	3	2	4		2	3							18
Failure to stop and render aid		3	2	2													7
Forgery		98	79	43	79	28	19	16	2	21	2					1	388
Kidnapping		2			3		1			1	1	1					9
Malicious mischief		7	5	1	2	1		1									17
Murder		2	2		21	5	7	10	3	50	26	26	11	4	5	4	188
Narcotics		85	105	46	122	27	24	33	6	86	28	21	5	4	1	3	601
Perjury					1			1									2
Rape		1			5		2	6	1	11	5	7	7	1	4	3	61
Robbery		17	37	28	122	26	46	38	8	159	84	50	15	3	4	4	645
Robbery by assault			3	2	10	2	2	4		8	21	31	11	3	2		101
Robbery with firearms					21	3	8	8	3	25	18	18	11	1	5	2	123
Sex offenses (excluding rape)		4	2	2	8			3	1	3							23
Swindling					3	1				1							5
Theft		160	167	78	121	33	30	11	5	38	1	1				3	648
Miscellaneous		5	5	1	6	1	4	1		3	1	3		1	1	1	33
TOTALS	3	763	773	415	1,109	263	255	238	45	603	221	173	60	17	24	19	5,022

*Private Residence at nighttime.

TABLE 34

2,140 INMATES RELEASED ON MANDATORY SUPERVISION DURING FISCAL
YEAR ENDING AUGUST 31, 1980, CLASSIFIED ACCORDING TO TYPE OF
CRIME COMMITTED AND LENGTH OF SENTENCE RECEIVED

Length of Sentence in Years											
Crime	1 to 2	2 to 3	3 to 4	4 to 5	5 to 6	6 to 7	7 to 8	8 to 9	9 to 10	10 to 15	Total
Arson		14	3	1	1						19
Assault		87	26	13	8		1				135
Assault murder				1							1
Breaking & entering		1	1								2
Burglary		199	104	38	33	2		1			377
Burglary *PRNT		51	29	8	11	1					100
Carrying firearms		41	12	4							57
Driving w/o owner's consent		69	35	10	7						121
DWI	57	61	18	4		3					143
Escape		8	2	1							11
Failure to stop and render aid		6	1								7
Forgery		111	51	19	16	1		2			200
Kidnapping		2	3	2	1						8
Malicious mischief		7		1							8
Murder		33	16	5	5						59
Narcotics		117	46	7	4						174
Perjury			1								1
Rape		22	15	3	2						42
Robbery	1	119	51	14	31	1					217
Robbery by assault			1		3						4
Robbery with firearms			3		2						5
Sex offenses (excluding rape)		35	24	6	9						74
Swindling		1									1
Theft		220	87	32	13						352
Miscellaneous		14	3	3	2						22
TOTALS	58	1,217	533	172	148	8	1	3			2,140

*Private Residence at nighttime.

TABLE 35

1,682 INMATES WHOSE PAROLES OR CONDITIONAL PARDONS WERE
REVOKED DURING THE FISCAL YEAR ENDING AUGUST 31, 1980,
CLASSIFIED ACCORDING TO CRIME COMMITTED AND
LENGTH OF SENTENCE RECEIVED

Crime	Length of Sentence in Years																	Total
	1 to 2	2 to 3	3 to 4	4 to 5	5 to 6	6 to 7	7 to 8	8 to 9	9 to 10	10 to 15	15 to 20	20 to 30	30 to 40	40 to 50	50 to 60	60 & Up	Life	
Arson				1	1													2
Assault		1	2	1	10			1		1								16
Assault murder											1	2						3
Assault rape																	1	1
Assault robbery								1										1
Breaking & entering					1	1											1	3
Burglary		60	88	53	230	53	62	30	6	72	5	3			1	5		668
Burglary *PRNT		1	2	3	5	4				5		1			1			22
Carrying firearms		4	2		3		1	2		4					1			17
Driving w/o owner's consent		11	14	9	11	3	6	3	1	3								61
DWI	1	10	6	2	4													23
Escape		1	1	1	1					3							1	8
Forgery		14	34	22	42	3	2	2	2	6							1	128
Habitual criminal					1												3	4
Kidnapping										1								1
Malicious mischief		2	1	1	2													6
Murder					2	1	1		1	3	2	7	2	2	4	6		31
Narcotics		10	13	4	32	10	7	10		32	19	8	1	1	1	3		151
Rape				1	4		1		1	5	5	4	3	1	1	5		31
Robbery		4	9	7	32	7	11	18	3	44	20	12	4	1			2	174
Robbery by assault			1		3		3		1	16	23	15	2	1			4	69
Robbery with firearms					1		1	2	1	7	5	6	2	5				30
Sex offenses (excluding rape)					3						2	1						6
Swindling			1	1						1								3
Theft	1	39	49	26	44	14	12	10	2	20	1						1	219
Miscellaneous				1	1		1			1								4
TOTAL	2	157	223	133	433	96	108	79	18	224	83	59	12	8	7	8	32	1,682

* Private residence at nighttime.

TABLE 36

162 INMATES WHOSE MANDATORY SUPERVISIONS WERE
REVOKED DURING THE FISCAL YEAR ENDING AUGUST 31, 1980,
CLASSIFIED ACCORDING TO CRIME COMMITTED AND
LENGTH OF SENTENCE RECEIVED

Crime	Length of Sentence in Years																	Total
	1 to 2	2 to 3	3 to 4	4 to 5	5 to 6	6 to 7	7 to 8	8 to 9	9 to 10	10 to 15	15 to 20	20 to 30	30 to 40	40 to 50	50 to 60	60 & Up	Life	
Arson		1																1
Assault		7																7
Burglary		27	7	1														35
Burglary *PRN		1																1
Carrying firearms		6	1															7
Driving w/o owner's consent																		20
DWI	3	3	2	1														9
Escape		3																3
Failure to stop and render aid			1															1
Forgery		5	6															11
Murder			1															1
Narcotics		4	1															5
Rape		3																3
Robbery		5	4															9
Robbery		39	9															48
Theft																		1
Miscellaneous		1																1
TOTALS	3	121	36	2														162

* Private Residence at nighttime.

TABLE 37

5,022 INMATES RELEASED TO PAROLE DURING THE FISCAL YEAR
ENDING AUGUST 31, 1980, CLASSIFIED ACCORDING TO
LENGTH OF SENTENCE RECEIVED AND PERCENTAGE OF TIME
ACCREDITED TO SENTENCE AT TIME OF RELEASE

Length of Sentence in Years	Percentage of Time Served								15 Years Time Credit Or More	20 Years Time Credit Or More	Total
	33% - 40%	40% - 50%	50% - 60%	60% - 70%	70% - 80%	80% to 90%	90% - 100%				
1 to 2	0	0	1	1	1	0	0			3	
2 to 3	112	155	275	101	82	36	2			763	
3 to 4	148	197	194	110	57	52	15			773	
4 to 5	78	135	54	54	57	29	8			415	
5 to 6	259	224	105	207	195	102	17			1,109	
6 to 7	80	41	30	48	33	23	8			263	
7 to 8	39	25	57	54	34	40	6			255	
8 to 9	34	31	58	32	27	48	7			237	
9 to 10	4	3	13	3	13	8	2			46	
10 to 15	66	75	133	90	95	102	42			603	
15 to 20	21	44	36	56	38	19	7			221	
20 to 30	24	56	27	28	17	14	7			173	
30 to 40	12	20	11	9	6	0	1		1	60	
40 to 50	1	10	3	0	0	1	2			17	
50 to 60	13	4	4	1	0	1	0	1		24	
60 & Up	5	0	2	0	0	0	0	5	7	19	
Life	8	0	0	0	0	0	0	15	18	41	
TOTAL	904	1,020	1,003	794	655	475	124	21	26	5,022	

TABLE 38

DISPOSITION OF OUT-OF-STATE APPLICATION FOR ACCEPTANCE
OF PAROLE SUPERVISION IN TEXAS CLASSIFIED
ACCORDING TO REQUESTING STATE

	Applications Made	Applications Accepted	Applications Refused	Applications Withdrawn	Applications Pending	Investigations
Alabama	20	18				2
Alaska	1	1				
Arizona	24	18	4		1	1
Arkansas	102	66	15	1	19	1
California	145	84	32	6	19	4
Colorado	44	37	4	1	1	1
Connecticut	6	5	1			
Delaware	1	1				1
Dist. of Columbia	3	2				8
Florida	98	64	13	2	11	6
Georgia	41	24	3		8	
Hawaii	0				2	
Idaho	5	2	1		12	
Illinois	87	59	14	2	1	
Indiana	25	16	5	3		
Iowa	8	5	3		1	1
Kansas	35	27	5	1	3	
Kentucky	23	15	3	2	9	3
Louisiana	126	74	19	21		
Maine	0				2	
Maryland	6	4				1
Massachusetts	4	3			6	1
Michigan	37	22	8		1	1
Minnesota	10	8			4	
Mississippi	25	17	3	1	4	1
Missouri	41	27	9		1	
Montana	8	7				
Nebraska	11	9	2		2	
Nevada	10	5	2	1		
New Hampshire	0				2	
New Jersey	16	10	4		6	1
New Mexico	84	61	12	4	4	5
New York	40	22	8	1	3	2
North Carolina	30	23	2			
North Dakota	0			1	7	5
Ohio	65	41	11	2	2	4
Oklahoma	56	38	10		2	1
Oregon	16	7	6		5	3
Pennsylvania	27	10	8	1		
Puerto Rico	0		1			
Rhode Island	1		2		2	1
South Carolina	14	9				
South Dakota	0		3	1	2	
Tennessee	16	10				
Utah	3	3				
Vermont	1	1			3	3
Virginia	20	10	3	1	6	2
Washington	37	25	4			1
West Virginia	2	1		1	2	
Wisconsin	15	11	1			
Wyoming	2	2				
TOTAL	1,391	904	221	53	153	60

TABLE 39

**PRESENT STATUS OF 85,553 INMATES PAROLED FROM
THE TEXAS DEPARTMENT OF CORRECTIONS
DURING 33-YEAR PERIOD
ENDING AUGUST 31, 1980**

Years	COLUMN I Released	COLUMN II Active	COLUMN III Terminated	COLUMN IV Revoked
1948	747	7	644	96
1949	761	7	629	125
1950	913	23	726	164
1951	1,125	8	862	255
1952	913	19	660	234
1953	759	34	532	193
1954	837	87	542	208
1955	1,247	105	809	333
1956	1,191	61	777	353
1957	894	38	548	308
1958	1,186	49	734	403
1959	1,759	40	1,152	567
1960	2,336	66	1,452	818
1961	2,552	54	1,612	886
1962	2,548	49	1,659	840
1963	2,787	77	1,747	963
1964	3,166	75	1,927	1,164
1965	2,407	51	1,468	888
1966	2,200	53	1,448	699
1967	1,737	69	1,176	492
1968	1,921	61	1,222	638
1969	1,943	76	1,165	702
1970	2,058	92	1,301	665
1971	2,278	121	1,560	597
1972	3,375	248	2,409	718
1973	3,770	334	2,633	803
1974	4,237	380	3,144	713
1975	4,788	549	3,288	951
1976	4,248	579	2,833	836
1977	7,150	1,214	4,335	1,601
1978	4,948	1,413	2,484	1,051
1979	7,750	4,454	2,154	1,142
1980	5,022	4,674	217	131
TOTAL	85,553	15,167	49,849	20,537

¹Revocation after reinstatement of parole is not shown in Column IV for parolees reinstated prior to Fiscal Year 1979.

EXPLANATION OF TABLE 39

Table 39 shows the present status of inmates released from the Texas Department of Corrections on paroles or conditional pardons during the 33-year period beginning September 1, 1947, and ending August 31, 1980.

A total of Column I (which gives the total number released each year) shows that 85,553 inmates were released during the entire 33-year period. A total of Column II (which gives the number still on active parole out of the total released each year) shows that 15,167 inmates released over the 33-year period are still serving satisfactorily on paroles or conditional pardons. Many inmates have already completed their paroles or conditional pardons and have been discharged from their sentences. A total of Column III (which gives those terminated satisfactorily out of the total released each year) shows that 49,849 released during the 33-year period have already satisfactorily terminated their paroles or conditional pardons. Some parolees have violated their paroles or conditional pardons, and clemency or parole has been revoked. A total of Column IV (which gives those revoked out of the total released each year) shows that 20,537 over the 33-year period have been revoked. These were revoked because of new felony convictions or for technical violations of parole.

As can be seen, Columns I, II, III and IV are constantly changing from year to year as parolees discharge their sentences or are revoked. For instance, there are at present only 92 parolees out of the 2,058 released in 1970 who are still on active parole. The others have discharged their sentences or have been revoked. On the other hand, there are 4,676 out of the 5,022 released in 1980. This is because those released in 1970 have had 10 years to discharge their sentences while on paroles or conditional pardons, while those released in 1980 have had only one year towards discharging their sentences.

TABLE 40
PRESENT STATUS OF 2,889 INMATES RELEASED FROM THE TEXAS
DEPARTMENT OF CORRECTIONS ON MANDATORY SUPERVISION
DURING THREE-YEAR PERIOD ENDING AUGUST 31, 1980

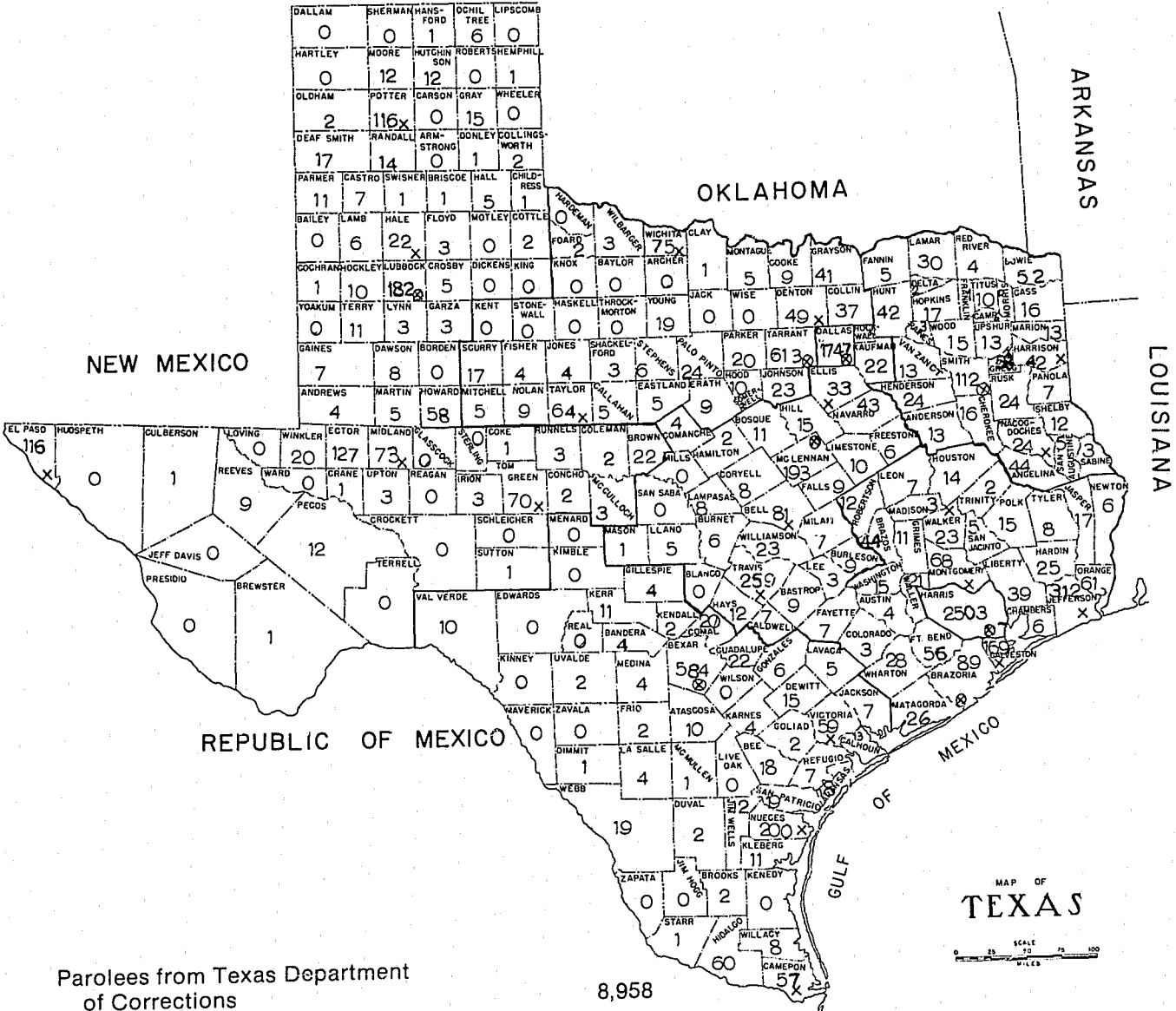
Years	COLUMN I Released	COLUMN II Active	COLUMN III Terminated	COLUMN IV Revoked
1978	10	0	9	1
1979	739	91	538	110
1980	2,140	1,935	138	67
TOTAL	2,889	2,026	685	178

EXPLANATION OF TABLE 40

The chart shows the present status of inmates released from the Texas Department of Corrections on mandatory supervision during the three-year period beginning September 1, 1977, and ending August 31, 1980.

A total of Column I (which gives the total number released each year) shows that 2,889 inmates were released during the entire three-year period. A total of Column II (which gives the number still under mandatory supervision out of the total released each year) shows that 2,026 inmates released over the three-year period are still serving satisfactorily under mandatory supervision. Many inmates have already completed their sentences. A total of Column III (which gives those terminated satisfactorily out of the total released each year) shows that 685 released during the three-year period have already satisfactorily terminated their mandatory supervision status. Some releasees have violated their mandatory supervision status and have been revoked. A total of Column IV (which gives those revoked out of the total released each year) shows that 178 over the three-year period have had their mandatory supervision status revoked. These figures will constantly change from year to year as releasees terminate their sentences or are revoked.

DISTRIBUTION OF 10,145 PAROLEES
ASSIGNED TO TEXAS COUNTIES AS OF
AUGUST 31, 1980



Parolees from Texas Department of Corrections	8,958
Parolees from other state prison systems	1,187
TOTAL PAROLEES UNDER ACTIVE SUPERVISION IN TEXAS	10,145

*Mandatory Supervision cases shown on separate map.

x = Parole Office
⊗ = Region Headquarters

[illegible]

x = Parole Office
 (x) = Region Headquarters

GLOSSARY

Active supervision: Status of parolee in which the parolee must report regularly to a field parole officer.

Commutation of sentence: A form of executive clemency whereby the sentence of the court may be lessened.

Conditional pardon: A form of executive clemency that does not become operative until the grantee has performed some specified act or becomes void after the occurrence of some specified event or remits only a portion of the penalties that are the legal consequences of a crime.

Detainer warrant: A legal or quasi-legal hold order under which a warden having a man in custody will not release him when he completes his sentence but will make him available to the officers of another jurisdiction to answer the charges or accusations pending in that jurisdiction.

District parole officer: Employee of the Board of Pardons and Paroles responsible for supervision of parolees and mandatory supervision releasees.

Emergency reprieve: A form of executive clemency whereby an inmate may be released from prison to enter a hospital, attend civil court proceedings, attend a funeral of an immediate family member or visit a critically ill immediate family member.

Executive clemency: Acts of the governor including lessening the severity of a sentence, stay of execution of a death sentence, full pardon, commutation of sentence imposed in a felony or misdemeanor case, emergency reprieve, medical reprieve, reprieve to attend civil court proceedings or a reprieve of jail sentence.

Further investigation (FI): An initial determination by the parole panel favorable to parole of an inmate pending further investigation.

FY: Fiscal year — September 1 through August 31.

Initial review: The first review conducted by the parole Board to determine if an inmate should be paroled at the time in the sentence when the inmate legally reaches the minimum eligibility for parole consideration.

Inmate: A person incarcerated in the Texas Department of Corrections, other penal institution or jail and serving a sentence imposed upon conviction of a crime.

Institutional parole officer: Parole officer who works within a penal institution to assist inmates and their families in matters concerning parole procedures, parole planning and executive clemency.

Interstate Probation and Parole Compact: An agreement between Texas, the other 49 states, the Virgin Islands and Puerto Rico to allow probationers and parolees to complete their terms in a jurisdiction other than the jurisdiction in which the offense was committed.

Jurisdiction: All persons over whom the Board of Pardons and Paroles has revocation power and who are subject to the orders of the Board. See Table 18.

Mandatory supervision: The release of a prisoner at the expiration of the maximum term less credit for good time earned, but not on parole, for rehabilitation and supervision in the community until the expiration of the calendar sentence.

Pardon: A form of executive clemency which absolves an individual from the legal consequences of his crime and conviction.

Parole: The conditional release, by administrative act, of a convicted offender from a penal or correctional institution, under the continued custody of the state, to serve the remainder of his sentence in the community under supervision.

Parolee: Inmate who is released from incarceration in a parole status.

Parole certificate: An order of the Board incorporating a parole agreement which, when fully executed, authorizes the release of an inmate from the Texas Department of Corrections on parole.

Parole panel: A three-member panel composed of commissioners and/or parole Board members for purposes of parole selection, parole revocation or mandatory supervision revocation.

Parole plan: Proposal for residence and employment or provision for maintenance and care of a parolee.

Preliminary investigation: A parole consideration in which it is determined that additional information is necessary before a final disposition can be made.

Pre-revocation warrant: Warrant authorizing the arrest by any peace officer of a parolee for alleged violation of conditions of his parole.

Probation: Release of a convicted offender by a court under conditions imposed by the court for a specified period during which the imposition of sentence is suspended.

Probation officer: Person employed by one or more courts of record having original criminal jurisdiction to supervise defendants placed on probation.

Reinstatement of parole: A reinstatement of a revoked parole.

Releasee: Inmate released on parole, conditional pardon or mandatory supervision.

Remission of fine or forfeiture: A form of executive clemency releasing the grantee from payment of all or a portion of a fine or cancelling a forfeiture of a bond.

Reprieve: A form of executive clemency granting the temporary suspension of the execution of a sentence.

Restoration of rights of citizenship: A form of executive clemency which restores the right to vote, which in turn restores any other civil rights conditioned upon the right to vote; not a full pardon.

Revocation: The cancellation of parole, mandatory supervision status or of a conditional act of executive clemency that subjects the grantee to immediate incarceration to serve the remainder of the sentence or, in the instance of a fine, to immediate payment of the fine.

Revoked without prejudice: Refers to revocations of parole on a new conviction on an offense that was committed prior to or about the same time as the offense for which the inmate is presently paroled.

Serve-all (SA): A decision by the parole panel to deny a recommendation for parole, with the further recommendation that the inmate be required to serve the remainder of the sentence in prison.

Set-off: Decision by the parole panel in which the offender is not paroled but his/her case is set for review at a later date.

Special review: A parole case consideration in which the inmate is eligible for parole upon or shortly after his/her arrival at the Texas Department of Corrections or, in the case of subsequent reviews, a case in which new and pertinent information dictates that it be reconsidered prior to the originally set-off date or prior to the serve-all date.

Subsequent review: A review conducted by a parole panel to determine if an inmate should be paroled subsequent to the initial review.

Technical violation: Violation, other than a new conviction, of the rules of the Board of Pardons and Paroles.

Texas Department of Corrections (TDC): The agency that manages the state's adult institutional correctional system with responsibility for custody of prisoners confined in its facilities.

Trial reprieve: A form of executive clemency used in jail cases in which an inmate is released for a specified time but not from the penalty of the sentence, nor does the time away from the jail count as time served on the sentence.

USIS: United States Immigration Service.

Violation hearing: The second hearing in the revocation process held before a parole panel at the Texas Department of Corrections (where the releasee is incarcerated). The evidence may be heard, and the panel determines whether to withdraw the pre-revocation warrant and continue the releasee on parole/mandatory supervision or to recommend revocation to the governor.

END