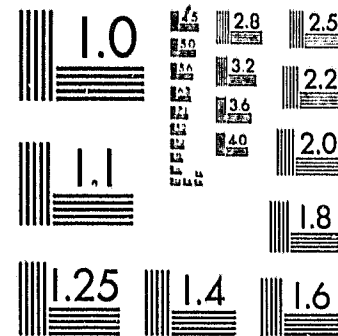


National Criminal Justice Reference Service

ncjrs

This microfiche was produced from documents received for inclusion in the NCJRS data base. Since NCJRS cannot exercise control over the physical condition of the documents submitted, the individual frame quality will vary. The resolution chart on this frame may be used to evaluate the document quality.



MICROCOPY RESOLUTION TEST CHART
NATIONAL BUREAU OF STANDARDS-1963-A

Microfilming procedures used to create this fiche comply with the standards set forth in 41CFR 101-11.504.

Points of view or opinions stated in this document are those of the author(s) and do not represent the official position or policies of the U. S. Department of Justice.

National Institute of Justice
United States Department of Justice
Washington, D. C. 20531

DATE FILMED

12/28/81

CHARACTERISTICS OF INMATE POPULATION

Rhode Island Adult Correctional Institution

April 1, 1980



RHODE ISLAND DEPARTMENT OF CORRECTIONS

75 HOWARD AVE.

CRANSTON R.I. 02920

777452

CHARACTERISTICS OF INMATE POPULATION
RHODE ISLAND ADULT CORRECTIONAL INSTITUTION

APRIL 1, 1980

U.S. Department of Justice 77745
National Institute of Justice

This document has been reproduced exactly as received from the person or organization originating it. Points of view or opinions stated in this document are those of the authors and do not necessarily represent the official position or policies of the National Institute of Justice.

Permission to reproduce this copyrighted material has been granted by

John J. Moran, Director
Rhode Island Dept. of Corrections

to the National Criminal Justice Reference Service (NCJRS).

Further reproduction outside of the NCJRS system requires permission of the copyright owner.

BY: Walter J. Fontaine
Senior Research Technician
RI Department of Corrections
Research & Planning Unit

APPROVED BY: John J. Moran
Director
RI Department of Corrections

TABLE OF CONTENTS

<u>Topic</u>	<u>Page</u>
Introduction.....	1
Security Classification.....	2
Age.....	3
Race.....	4
Marital Status.....	4
Type of Offense.....	5-6
Length of Sentence.....	7
Juvenile Experience.....	8
Prior Adult Experience.....	8-9
Census Tract of Residence.....	10-11
Education at Admission.....	12
Analysis of Table 2.....	13
Analysis of Tables 3, 4.....	14
Analysis of Table 5.....	15
Analysis of Tables 6, 7.....	16-18
Analysis of Table 8.....	18
Analysis of Tables 9, 10, 11.....	19-21
Analysis of Table 12.....	22
Analysis of Table 13.....	23
Analysis of Table 14.....	24-25
Analysis of Tables 15, 16.....	26
Analysis of Table 17.....	27
Analysis of Table 18.....	28-29
Analysis of Table 19.....	30-31
Analysis of Table 20.....	32-33
Analysis of Table 21.....	34

TABLE OF CONTENTS (Continued)

<u>Topic</u>	<u>Page</u>
Analysis of Table 22.....	34-35
Analysis of Table 23.....	35-36
Analysis of Table 24.....	36
Analysis of Table 25.....	37
Analysis of Table 26.....	38
Analysis of Table 27.....	38-39
Analysis of Table 28.....	39-40
Analysis of Table 29.....	40-41
Analysis of Table 30.....	42-43
Analysis of Table 31.....	43-45
Table 1 - Distribution of Male Sentenced Inmates by Security Classification April 1, 1980 - September 1, 1977.....	46
Table 2 - Racial Composition of the ACI Inmate Population According to Security Classification - April 1, 1980.....	47
Table 2A - Racial Composition of the ACI Inmate Population According to Security Classification - September 1, 1977.....	48
Table 2B - Distribution of the Male Sentenced Inmates by Security Classification and Race - April 1, 1980 - Sept. 1, 1977....	49
Table 3 - Inmates of the ACI According to Age and Classification - April 1, 1980.....	50-51
Table 3A - Inmates of the ACI According to Age and Classification - September 1, 1977.....	52-53
Table 4 - Percentage Distribution of the Male Sentenced Population According to Age and Classification - September 1, 1977 - April 1, 1980.....	54
Table 5 - ACI Population According to Security Classification and Marital Status Upon Admission - April 1, 1980.....	55-56

(ii)

TABLE OF CONTENTS (Continued)

<u>Topic</u>	<u>Page</u>
Table 6 - Security Classification of Inmates at the ACI According to Charge - April 1, 1980.....	57-62
Table 6A - Security Classification of Inmates at the ACI According to Charge - September 1, 1977.....	63-68
Table 7 - Male Sentenced Population at the ACI According to Charge and Security Classification - September 1, 1977 - April 1, 1980.....	69-70
Table 8 - Ten Leading Offenses of Sentenced Inmates at the ACI - Sept. 1, 1977 - April 1, 1980.....	71
Table 9 - Security Classification of Inmates at the ACI According to Length of Sentence - April 1, 1980.....	72-73
Table 9A - Security Classification of Inmates at the ACI According to Length of Sentence - April 1, 1980.....	74-75
Table 10 - Percentage Distribution of the Male Sentenced Population According to Classification & Length of Sentence - September 1, 1977 - April 1, 1980.....	76
Table 11 - Distribution of the Sentenced Population According to Length of Sentence - Sept. 1, 1977 - April 1, 1980....	77
Table 12 - Classification of the ACI Population According to Juvenile Training School Experience - Sept. 1, 1977 - April 1, 1980..	78
Table 13 - Classification of the ACI Population According to Previous Adult Sentences - September 1, 1977 - April 1, 1980.....	79
Table 14 - Classification of the ACI Population According to City and Town of Residence - April 1, 1980.....	80-90
Table 15 - Sentenced Population of the ACI According to Security Classification and Education - April 1, 1980.....	91
Table 16 - Inmates of the R.I. ACI According to Race and Age - April 1, 1980.....	92-93

(iii)

TABLE OF CONTENTS (Continued)

<u>Topic</u>	<u>Page</u>
Table 17 - Sentenced Inmates of the R.I. ACI According to Length of Sentence and Race - April 1, 1980.....	91
Table 18 - Inmates at the R.I. ACI According to Race and Charge - April 1, 1980.....	95-96
Table 19 - Recidivism Status of Inmates at the R.I. ACI According to Race and Security Classification - April 1, 1980.....	97
Table 20 - Recidivism Status of Inmates at the R.I. ACI According to Charge and Sentenced or Awaiting Trial Status - April 1, 1980.....	98
Table 21 - Recidivism Status of Inmates at the R.I. ACI According to Marital Status - April 1, 1980.....	99
Table 22 - Recidivism Status of the Sentenced Population According to Education at Admission - April 1, 1980.....	100
Table 23 - Inmates at the R.I. ACI According to Length of Sentence and Recidivism Status - April 1, 1980.....	101
Table 24 - Residents of the R.I. ACI According to Prior Residence at the R.I. Training School and Adult Recidivism Status - April 1, 1980.....	102
Table 25 - Residents of the R.I. ACI According to Age and Prior Residency at the Training School - April 1, 1980.....	103
Table 26 - Residents of the R.I. ACI According to Race and Prior Residency at the Training School - April 1, 1980.....	104
Table 27 - Inmates at the R.I. ACI According to Charge and Prior Residency at the Training School - April 1, 1980.....	105
Table 28 - Sentenced Inmates of the R.I. ACI According to Length of Sentence and Age - April 1, 1980.....	106
Table 29 - Inmates at the R.I. ACI According to Charge and Length of Sentence - April 1, 1980.....	107-114

TABLE OF CONTENTS (Continued)

<u>Topic</u>	<u>Page</u>
Table 30 - Inmates at the R.I. ACI According to City or Town and Census Tract of Residence - April 1, 1980.....	115-120
Table 31 - Time Actually Served by Sentenced Inmates Released by Parole or Expiration of Sentence during Calendar Year 1979.....	121-122

INTRODUCTION

This report as the title suggests is an inventory of the characteristics of the population at the Adult Correctional Institution. The Adult Correctional Institution is composed of six (6) divisions - Maximum Security, Medium Security, Minimum Security, the Work Release Program, the Drug Unit, and the Women's Division. The Maximum Security Building and the Women's Division have both sentenced and awaiting trial inmates. The other four (4) divisions have only sentenced inmates. This report makes numerous comparisons between the April 1, 1980 population and the September 1, 1977 population.

In this report ten (10) variables and their interrelationships are discussed. These variables are:

1. Security classification
2. Age
3. Race
4. Marital Status
5. Type of offense
6. Length of sentence
7. Juvenile experience
8. Prior adult sentences
9. Census tract of residence
10. Education at admission

SECURITY CLASSIFICATION

In this report Security Classification is defined as the building in which the inmate resided on April 1, 1980. By and large the name of the building adequately describes the inmate's individual security classification. There are two (2) types of exceptions:

1. Sometimes inmates from lesser securities are temporarily transferred to the Maximum Security Hospital for medical treatment.
2. Nine inmates in the Medium Security "Cell Block South", a disciplinary segregation area, were actually Maximum Security Inmates.

Between the last Characteristics report (covering September 1, 1977) and the current report, many changes have occurred in the area of classification. Particularly noteworthy is the growth of inmate population in the lesser securities. The sentenced population at Maximum decreased by 15.1 percent. The Medium Security sentenced population increased by 26.7 percent; the Minimum Security population increased by 37.2 percent; and the Work Release population increased by 100 percent.

During this three year period a Drug Unit was created. The Minimum Security Building, Work Release Unit, and Drug Unit are all open populations. The total open population increased from 107 in 1977, to 176 in 1980. This was an increase of 64.5 percent. In 1977, 18.6 percent of the male sentenced population was in open institutions. On April 1, 1980 the proportion of male sentenced inmates in open institutions was up to 28 percent.

The male awaiting-trial population in 1977 was in two (2) buildings, the Maximum Security Building and the Medium Security Building. Since that time, the male awaiting trial population has been condensed into one unit and separated from the sentenced population. The total population at Maximum Security increased by 0.5 percent due to the transfer of all awaiting trial population to Maximum and a 24.2 percent increase in the total awaiting trial population.

AGE

Age, as you would expect, is defined as the number of completed years from the inmate's date of birth up to the date of this study.

From the data in Table 3, it is apparent that the ACI is predominantly composed of younger persons, and that the typical awaiting trial inmate is younger than the typical sentenced inmate. On April 1, 1980 the median age of the sentenced population was 25.9 years, and the median age of the awaiting trial population was 24.0. On September 1, 1977 the median age of the sentenced population was 27.1, and the median age of the awaiting-trial population was 22.2. The median age of the total ACI population was 25.6 in 1980 and 26.3 in 1977.

A substantial increase was noticed in the number of inmates aged 18-20. On September 1, 1977 there were 80 inmates aged 18-20 - 46 sentenced and 34 awaiting trial. On April 1, 1980 there were 120 inmates aged 18-20 - 81 sentenced and 39 awaiting trial. The increase in the number of sentenced inmates within this age group was 76.1 percent.

Increases were also noticed in the sentenced population for ages 21-22 (5.1 percent), ages 23-24 (26.2 percent), ages 25-29 (3.8 percent), and ages 40-49 (20.6 percent). Decreases were noted for ages 30-34 (10.3 percent), ages 35-39 (21.1 percent), and ages 50+ (4.2 percent).

RACE

In this report, race is divided into four (4) categories; white, black, Spanish surname and "other races." Any person with a Spanish surname, whether or not he considers himself white or black was classified under the "Spanish surname" category.

There was very little change in the racial composition of the sentenced inmate population between 1977 and 1980. In 1977, the sentenced population was 73.0 percent white, 24.9 percent black, 1.7 percent Hispanic, and 0.3 percent other races. In 1980, the sentenced population was 72.9 percent white, 24.1 percent black, 2.8 percent Hispanic, and 0.2 percent other races.

The racial composition of the awaiting trial population changed considerably. In 1977, the racial composition was 70.4 percent white, 18.4 percent black, 10.2 percent Hispanic, and 1.0 percent other races. In 1980, the composition of the awaiting trial population was 57.8 percent white, 36.7 percent black, 5.5 percent Hispanic, and zero percent other races.

MARITAL STATUS

Marital status is divided into six (6) categories: never married, married, common law marriage, separated, divorced, and widowed. Among the sentenced population 61.7 percent had never been married, 18.0 percent were married as of April 1, 1980, 2.2 percent were in a common-law relationship, 4.9 percent were separated, 11.6 percent were divorced, and 1.7 percent were widowed.

Among the awaiting trial population, 60.9 percent had never been married, 20.3 percent were married as of April 1, 1980, 0.8 percent were in common-law relationships, 7.0 percent were separated, 10.2 percent were divorced, and 0.8 percent were widowed. No comparable data exist for the date September 1, 1977.

TYPE OF OFFENSE

Of the ten variables considered in this report, charge was the one most difficult to define. Therefore, the following rules were adhered to:

1. Only one charge would be tabulated for each inmate. If multiple charges were considered, the tables in this report would be difficult both to write and to interpret.
2. If an inmate was sentenced on several charges and was to serve these sentences concurrently, the charge carrying the longest sentence was tabulated. If more than one charge carried equally long sentences, the most serious charge was tabulated. This, of course, is a subjective decision. The philosophy behind these decisions is to reflect the reason for this man's (woman's) incarceration.
3. If an inmate was serving consecutive sentences as a result of multiple acts committed prior to his committal at the ACI, the charge carrying the longest sentence was tabulated.
4. If a man (woman) returned to the ACI as a violator of parole and was subsequently sentenced on a new charge, the new charge was tabulated. If, on the other hand, the person did not receive a new sentence, his charge was listed under the category Violator of Parole or Suspended or Deferred Sentences.
5. If an inmate was serving consecutive sentences, with the additional time applied to acts committed while an inmate, the most serious charge was tabulated. Usually the charge with the longest sentence was the most serious.
6. If an inmate was both serving a sentence and awaiting trial on other charges, the inmate was tabulated as a sentenced man and the charge for which he received the sentence was the one tabulated.
7. If an inmate was awaiting trial on more than one charge, the charge for which bail was denied (or not made) was the charge tabulated. If it was not possible to determine which charge resulted in his incarceration, the more serious charge was tabulated.
8. Conspiracy to commit any specified offense was tabulated under that category of offense.

The charges were then divided into three broad categories of offense:

(1) crimes against person (2) crimes against property and (3) other offenses.

The crimes against person were:

1. Murder
2. Manslaughter
3. Assault with intent to murder
4. Kidnapping
5. Robbery
6. Assault with intent to rob
7. Rape (includes sexual assault - first degree)
8. Sexual assault, except rape (this category includes indecent assault, assault with intent to rape, and second or third degree sexual assault)
9. Other sex offenses (this category includes incest, carnal knowledge, abominable and detestable crime against nature, prostitution, etc.)
10. Assault with a dangerous weapon
11. Assault - not elsewhere classified
12. Weapons offenses
13. Larceny from person

The crimes against property were:

1. Breaking and entering or burglary (This category also includes entering a dwelling or building with intent larceny and possession of burglary tools)
2. Stolen motor vehicle (includes driving off auto without permission of owner)
3. Larceny, not of motor vehicles
4. Receiving stolen goods (other than motor vehicles)
5. Forging, uttering, or publishing
6. Arson or statutory burning
7. Other property crimes (These included embezzlement, obtaining money under false pretenses, violating the banking laws).

The other offenses were:

1. Drug offenses (possession, sale, manufacture and delivery of controlled substances, possession of needle and syringe, and frequenting narcotic nuisance)
2. Violation of probation or parole (includes technical violators of parole who did not receive additional sentences and all inmates sentenced specifically for the offense of violation parole or a suspended or deferred sentence)
3. Other offenses (in 1980 these offenses included conspiracy (not further specified), extortion, obstructing a police officer, fugitive from justice, eluding a police officer, driving to endanger death resulting, driving under the influence of alcohol, leaving the scene of an accident, reckless driving, and shell-fishing in polluted water)

LENGTH OF SENTENCE

Several decisions had to be made with regard to tabulating length of sentence:

1. If an inmate was serving several sentences concurrently the length of the longest sentence was tabulated.
2. If an inmate was serving several sentences consecutively, the total length of these sentences was tabulated.
3. If an inmate returned as a parole violator without incurring a new sentence, the length of the sentence from which he (she) was paroled was tabulated.
4. If an inmate returned as a parole violator and incurred a new sentence, and as of the time of this survey was simultaneously serving time as a parole violator from the previously imposed sentence, the longer of the two sentences was tabulated, even though the more recent offense was tabulated under the variable "charge."
5. In computing the mean and median lengths of sentence, the life and death sentences were treated as being equal to 50 years.

In determining the average length of sentence, the median is a superior measure of central tendency of the mean, because the mean is greatly influenced by extreme values. The chief value in the mean is that it accentuates the fact that some sentences are very long. On April 1, 1980 there were 40 lifers and 43 other persons sentenced to 21 years or more. On September 1, 1977 there were two (2) inmates sentenced to death, 31 lifers, and 32 other persons sentenced to 21 years or more.

JUVENILE EXPERIENCE

This variable has only two categories:

- (1) Inmates with training school experience and (2) Inmates with no training school experience.

Juvenile incarcerations in other states were included in this definition. On April 1, 1980 - 42.1 percent of the sentenced population and 34.4 percent of the awaiting-trial population had been detained or committed to the training school as a juvenile.

The corresponding statistics for the date September 1, 1977 were similar - 42.2 percent of the sentenced population and 26.7 percent of the awaiting trial population had training school experience.

PRIOR ADULT SENTENCES

The variable also has only two categories:

- (1) Inmates with prior adult sentences, and (2) Inmates with no prior adult sentences.

Prior adult sentences referred to prison or jail sentences of 90 days or longer. Prior fines, suspended sentences, probation, or prison or jail sentences of less than 90 days were not included in this definition. Inmates who were violators of parole from a previous sentence and returned to prison to complete this sentence were tabulated as inmates with prior adult sentences. An inmate returned from escape or from an out-of-state transfer was not considered to have incurred previous adult sentences unless he (she) was imprisoned prior to the commitment upon which he (she) began serving the sentences that were in effect on the date of this study. Similarly, if an inmate received additional charges after the current imprisonment began, he (she) was not tabulated as having incurred a previous sentence unless he (she) served a sentence prior to the beginning of the current incarceration.

On April 1, 1980, 41.2 percent of the inmate population had served at least one previous sentence of 90 days or longer. Nearly 45 percent of the sentenced population, but only 23.4 percent of the awaiting trial population, had served a prior sentence of 90 days or longer. Although it can be stated that 44.8 percent of the sentenced population were recidivists, it cannot be said that the recidivism rate was 44.8 percent. The latter measure is based on the entire cohort of releases during a given period of time. A follow-up period of three years is required in order to determine this rate.

On April 1, 1977, 46 percent of the inmate population had served at least one previous sentence of 90 days or longer. Over half (51.2 percent) of the sentenced population, but only 15.3 percent of the awaiting trial population, had served a prior sentence of at least 90 days.

CENSUS TRACT OF RESIDENCE

Three rules were followed in assigning the variable "residence" to the population in this study:

1. If an inmate listed more than one residence, the most recent address was tabulated.
2. If an inmate stated that he had no permanent address, but during previous incarcerations he did list an address, the most recent address that he (she) did state was used.
3. The residence was listed as unknown only if the inmate has never listed any permanent address.

Residences were further tabulated by census tract. A census tract is a portion of a city or town used by the Census Bureau to define a neighborhood. The table below gives the approximate neighborhood definition of census tract for the state's larger urban areas:

<u>CITY or TOWN</u>	<u>NEIGHBORHOOD</u>	<u>CENSUS TRACTS</u>
Cranston	Edgewood-Pawtucket	134,135,136
Cranston	Auburn	137.01,137.02, 138,140
Cranston	Garden City-Dean Estates	139,143,144
Cranston	Arlington-Knightsville	141,147
Cranston	West Cranston	145,146,148
Cranston	State Institutions-Pettaconsett	142
East Providence	North	101.01,101.02
East Providence	North Central	102,103
East Providence	South Central	104,105.01, 105.02
East Providence	South	106,107.01, 107.02
Newport	North	405,406,410,411
Newport	South	407,408,409
Newport	Navy	412
Pawtucket	Fairlawn	150,163
Pawtucket	Woodlawn-Downtown	149,151,152, 161,164
Pawtucket	Oakhill	165,166
Pawtucket	Pleasant View-East Side	153,154,160, 167,171
Pawtucket	North Darlington	155,156,157
Pawtucket	South Darlington	158,159 168,169,170

CONTINUED

<u>CITY or TOWN</u>	<u>NEIGHBORHOOD</u>	<u>CENSUS TRACTS</u>
Providence	Washington Park	001
Providence	Elmwood	002,003
Providence	South Providence	004,005,006,007
Providence	Federal Hill-Olneyville	008,009,010
		011,019
Providence	West End	012,013,014,015
Providence	Annex-Manton	016,017,018,020
Providence	Elmhurst-Upper Mt.	
	Pleasant	021,023,024
Providence	Smith Hill-Lower Mt.	
	Pleasant	022,025,026
Providence	Eagle Park-Wanskuck	027,028,029
Providence	Hope	030,031,032,033
Providence	East Side	034,035
Providence	College Hill-Fox Point	036,037
Warwick	Lakewood-Spring Green	210,212,213
Warwick	Norwood-Hillsgrove	211,214.01,
		214.02
Warwick	Greenwood-Pontiac	221,223
Warwick	Buttonwoods	219.01,219.02,
		219.03
Warwick	Oakland Beach-Warwick	
	Neck	215.01,215.02,
		216,217,218
Warwick	Cowesett-Potowamut	220,222.01,
		222.02,224
Woonsocket	Fairmount-Central	172,174,176
Woonsocket	Globe-North End	173,175
Woonsocket	Bernon	177,178,179
Woonsocket	Social	180,181,182,183
Woonsocket	East Woonsocket	184,185

EDUCATION AT ADMISSION

Education is defined in this report as the highest grade in school that the inmate had successfully completed as of his latest admission to the ACI. These data were obtained from the inmate's social history. Because social histories were not done on awaiting trial inmates, education was tabulated for sentenced inmates only.

The median number of completed years of education for the ACI population was 9.9 years. This was considerably below the median education for the population of Rhode Island. (11.5 years according to the 1970 census.) It should be noted that frequently these inmates' academic functioning level was well below the stated grade level. An earlier study by this division (June 30, 1975) showed that although the median number of completed years of schooling was 9.2 years, the median reading level was grade 7.5, and the median mathematics level was grade 6.2

The remaining portion of the text of this report will interpret and analyze the data presented in the tables that pertain to the April 1, 1980 population.

TABLE 1

A complete analysis of these data is presented in the Security Classification section of the text on Page 2.

TABLE 2

This table is a cross-tabulation of Security Classification and race. The women of all classifications are housed in the same facility. Therefore, the analysis of the Security Classification by race is confined to the 629 male sentenced inmates - 282 Maximum Security inmates, 171 Medium Security inmates, 107 Minimum Security inmates, 58 men on the Work Release program and 11 men in the Drug Unit. A summary of these data is as follows:

	<u>Percentage White</u>	<u>Percentage Black</u>	<u>Percentage Hispanic</u>
All Sentenced Males	73.1	24.0	2.7
Maximum	70.2	26.2	3.2
Medium	75.4	21.1	3.5
All Open Units	75.6	23.3	1.1
Minimum	71.0	28.0	0.9
Work Release	81.0	17.2	1.7
Drug Unit	90.9	9.1	0.0

A considerably higher proportion of blacks was found in the awaiting trial population (36.7 percent). Hispanics accounted for 5.5 percent of the awaiting trial population. Whites accounted for 57.8 percent of the inmates awaiting trial.

TABLE 3 AND TABLE 4

Both of these tables deal with security classification and age. Table 3 is a complete cross-tabulation of all the divisions of the ACI by age. Table 3 includes awaiting trial inmates. Table 4 is a percentage distribution of classification for each broad age group in the male sentenced population of both April 1, 1980 and September 1, 1977.

On April 1, 1980, nearly 13 percent of the sentenced population was under 21 years old; 16.1 percent were aged 21-22; and another 16.6 percent were aged 23-24. Thus, 45.4 percent of these inmates were under 25. The median age of the sentenced population was 25.9. The median age of the sentenced women (31.3) was higher than the corresponding figure for men (25.9). The median age was 27.9 for the Work Release Program, 27.5 for the Drug Unit, 26.1 for Maximum Security, 25.6 for Minimum Security, and 24.9 for Medium Security.

The awaiting trial population was even younger than the sentenced population. The median age of the awaiting trial population was only 24.0. Nearly one-third (30.5 percent) were under 20 years old; 13.3 percent were aged 21-22; and 12.5 percent were aged 23-24. Thus, 56.3 percent of the awaiting trial population was under 25 years old.

TABLE 5

Table 5 is a cross-tabulation of security classification and marital status. Well over half of the inmates had never been married. The proportion of inmates who were never married was between 60.7 and 62.1 percent in Maximum Security, Minimum Security and the Drug Unit and was even higher in Medium Security (68.4 percent). Exactly half of the sentenced women were never married. Only 43.1 percent of the Work Release population were never married.

The proportion of married inmates was highest in the Work Release Unit (29.3 percent) and lowest in the Drug Unit (zero percent). The proportion of married inmates was between 17.7 and 20.0 percent in all other units except Minimum Security, where only 13.1 percent were married. Common-law marriages, which are recognized in Rhode Island, accounted for higher proportions of inmates among the Minimum and Work Release populations than was found among the population of other units. Only 2.2 percent of the sentenced population and 0.8 percent of the awaiting trial population were known to be involved in common-law marriages.

Approximately 5 percent of all inmates were separated. This proportion was highest among Drug Unit and Work Release program inmates and lowest among Medium and Maximum Security inmates. Similarly, the proportion of divorcees in the open units and in Maximum Security was much higher than the corresponding proportion in Medium Security. Divorcees accounted for 27.3 percent of the Drug Unit population, 14.0 percent of the Minimum Security population, and 10.3 percent of the Work Release population. In contrast, only 7.6 percent of the Medium Security population was divorced. The proportion of divorcees in Maximum Security was 12.8 percent. Only 12 inmates in the entire ACI were widows or widowers.

TABLE 6 AND TABLE 7

Both of these tables deal with the relationship between charge and security classification. Table 6 is a detailed cross-tabulation of charge and security classification. All inmates, including awaiting trial inmates, are included in this table. Table 7 is a percentage distribution of the male sentenced population of both April 1, 1980 and September 1, 1977 by charge and security status. Three broad classifications of charge were considered: 1) crimes against person; 2) crimes against property; and 3) crimes neither against person nor property. On April 1, 1980, the percentage distribution of these broad types of offender was as follows:

	Maximum	Medium	Minimum	Work Release	Drug Unit
All Offenses	44.8	27.2	17.0	9.2	1.7
Crimes Against Person	43.8	27.8	18.0	9.0	1.5
Crimes Against Property	45.7	26.9	16.0	10.3	1.1
Crimes Against Neither Person Nor Property	50.0	24.1	13.0	7.4	5.6

There were nine categories of offender in which the proportion of inmates classified Maximum was equal to or greater than 50 percent. The percentage distribution by classification of these nine types of offender were as follows.

OFFENSE	MAXIMUM	MEDIUM	MINIMUM	WORK RELEASE	DRUG UNIT
1. Murder	50.6	17.7	19.0	12.7	0.0
2. Assault with Intent to Murder	56.3	25.0	12.5	6.3	0.0
3. Kidnapping	50.0	10.0	30.0	10.0	0.0
4. Assault with Intent to Rob	57.1	28.6	14.3	0.0	0.0
5. Sexual Assault (Except Rape)	50.0	35.7	14.3	0.0	0.0
6. Weapons Offenses	62.5	0.0	25.0	12.5	0.0
7. Stolen Motor Vehicles	57.1	0.0	42.9	0.0	0.0
8. Violation of Probation or Parole	56.3	25.0	12.5	0.0	6.3
9. "Other Offenses"	60.0	20.0	10.0	10.0	0.0

There were seven categories of offender in which the proportion of inmates classified Maximum was between 40.0 and 49.9 percent. The percentage distribution by classification of these seven types of offender was as follows.

OFFENSE	MAXIMUM	MEDIUM	MINIMUM	WORK RELEASE	DRUG UNIT
1. Robbery	42.8	32.2	15.8	5.9	3.3
2. Assault with a Dangerous Weapon	40.0	32.0	8.0	16.0	4.0
3. Assault/not elsewhere classified	40.0	20.0	40.0	0.0	0.0
4. Breaking and Entering, etc.	48.1	26.7	16.0	8.4	0.8
5. Larceny (not motor vehicle)	40.0	60.0	0.0	0.0	0.0
6. Receiving Stolen Goods	40.0	20.0	20.0	10.0	10.0
7. Drug Offenses	42.9	25.0	14.3	10.7	7.1

There were seven categories of offense in which less than 40 percent were classified Maximum. The percentage distribution by classification of these seven types of offender was as follows:

OFFENSE	MAXIMUM	MEDIUM	MINIMUM	WORK RELEASE	DRUG UNIT
1. Manslaughter	35.7	42.9	0.0	21.4	0.0
2. Rape	36.8	36.8	21.1	5.3	0.0
3. Non-assaultive Sex Offenses	33.3	11.1	33.3	22.2	0.0
4. Larceny from Person	21.4	35.7	35.7	7.1	0.0
5. Forging, Uttering, etc.	25.0	50.0	0.0	25.0	0.0
6. Arson/Statutory Burning	38.5	23.1	15.4	23.1	0.0
7. "Other" Property Crimes	20.0	40.0	0.0	40.0	0.0

TABLE 8

Table 8 is a listing of the 12 most common types of offense for the sentenced population on both April 1, 1980 and September 1, 1977.

Robbery was the leading type of offense on both dates; burglary was second on both dates; and murder was third on both dates. Rape, which was the fourth most common type of offense for the 1980 population was only the seventh most common offense for the 1977 population. Drug offenses was the fifth ranking offense for the 1980 population and the fourth ranking offense for the 1977 population. Assault with a dangerous weapon ranked sixth in both 1980 and 1977. The top 12 offenses in 1980 were completed by non-assaultive sex offenses (rank 7), violations of probation and parole (rank 8/9), assault with intent to kill (rank 8/9), manslaughter (rank 10/12), sexual assault (other than rape - rank 10/12) and larceny from person (rank 10/12).

TABLES 9, 10 AND 11

Table 9 is a cross-tabulation of security classification and length of sentence for the April 1, 1980 population. Table 9A presents the same data for the September 1, 1977 population. Table 10 is a percentage distribution of security classification and length of sentence for the male population of both years. Table 11 is a comparison of the length of sentence distribution on these two dates (9-1-77 and 4-1-80). The large disparity between the two measures of average length of sentence is due to the presence of 60 inmates that are serving 30 years or more. In calculating the mean length of sentence, inmates serving life terms were treated as being sentenced to 50 years (a reasonable approximation of their average life expectancy at the time of sentence). The median length of sentence is probably a more useful measure because it is less affected by unusually long sentences. Inmates sentenced to long periods of time usually serve a much smaller fraction of their sentence than those whose sentences are shorter. A study of inmates released in 1979 showed that inmates sentenced to long periods of time served a much smaller proportion of their sentence than those whose sentences were shorter. An inmate sentenced to two years served an average (mean) of 17 months (71 percent of his sentence). An inmate sentenced to five years served an average (mean) of 3.1 years (62 percent of his sentence). Inmates sentenced to over 10 years usually served less than half their sentence. These data are presented in Table 31 and analyzed more exhaustively in the section of the text dealing with this table.

Perhaps the most dramatic finding in Tables 9 and 9A is the change in the type of inmate in the lesser securities. On September 1, 1977 the median sentence of the entire population was 4.6 years. At that time the median length of sentence was longer for inmates in the lesser securities than for inmates in higher securities. The median length of sentence was 4.8 years for Minimum Security inmates and 10.4 years for those in the Work Release program. The median sentence for Maximum Security inmates was 4.5 years, while the median sentence of Medium Security was 3.4 years.

In 1980, the median sentence of the male population was 4.8 years. In 1980, the higher securities had longer median lengths of sentence than the lesser securities. These data are summarized in the table below. Note that the Drug Unit did not exist in 1977.

AVERAGE LENGTH OF SENTENCE BY CLASSIFICATION
1979 and 1980

<u>SECURITY</u>	<u>1977</u>		<u>1980</u>	
	<u>Median Sentence</u>	<u>Mean Sentence</u>	<u>Median Sentence</u>	<u>Mean Sentence</u>
Entire ACI	4.6	9.7	4.8	10.0
Maximum	4.5	10.0	5.1	11.5
Medium	3.4	7.5	4.7	8.9
Minimum	4.8	9.6	3.8	8.8
Work Release	10.4	16.1	3.7	8.5
Drug Unit	—	—	5.0	5.3

The most outstanding finding in Table 10 is the reduction in security classification of those sentenced to relatively short terms. In 1977, 94.4 percent of the inmates sentenced to less than 6 months

were in either Maximum or Medium Security. In 1980, 30.3 percent were in Maximum, 40.9 percent were in Medium and 28.8 percent were in Minimum or Work Release. In 1977, 51.2 percent of the inmates sentenced to 6.0 - 17.9 months were in Maximum. In 1980, 30.3 percent of these inmates were classified Maximum.

Table 11 shows that the average length of sentence has increased slightly between 1977 and 1980. In spite of a 9 percent increase in the population, there was a 36.8 percent decrease in the number of inmates sentenced to under 6 months. The number of inmates sentenced to over 15.5 years increased from 90 to 113 (an increase of 25.5 percent.) There was a 29 percent increase in the number of lifers.

TABLE 12

This table is a cross-tabulation of security classification at the ACI and Training School experience. In 1977, 42.2 percent of the sentenced population at the ACI had been to the Training School for Boys and Girls as a juvenile. Similarly, 42.1 percent of the 1980 population had juvenile correctional institutional experience. The proportion of former training school residents among the inmates awaiting trial was 27.6 percent in 1977 and 34.4 percent in 1980. The proportion of former training school residents was considerably lower for female inmates (26.7 percent in 1977 and 25.0 percent in 1980). In 1980 the male inmates in the higher securities were more likely to have been training school residents than those in the lesser securities. This was not true of Maximum and Medium Security in 1977. The data supporting this statement are presented in the table below:

Security	Percentage Former Training School Residents	
	1977	1980
Maximum	41.0	50.0
Medium	51.9	40.4
Minimum	38.5	36.6
Work Release	31.0	25.9
Drug Unit	Closed	36.4

TABLE 13

This table shows the security classification of the ACI population in 1977 and 1980 according to recidivism status. For the purposes of this report, recidivists referred to inmates who had served a previous adult prison or jail sentence of 90 days or longer. In both 1977 and 1980 the higher securities generally had a higher proportion of recidivists than the lesser securities. The lone exception was the Drug Unit which was composed of 63.6 percent recidivists. In both years, the Awaiting Trial population had a lower percentage of recidivists than the sentenced population. The data are summarized in the table below:

SECURITY	PERCENT RECIDIVISTS 1977	PERCENT RECIDIVISTS 1980
All Sentenced	46.1	40.7
Maximum	55.4	51.4
Medium	52.6	42.1
Minimum	44.9	37.4
Work Release	17.2	31.0
Drug Unit	Closed	63.6
Women	41.7	0.0
Awaiting Trial	15.3	23.4

TABLE 14

This is a cross-tabulation of security classification by city or town of residence. Thirteen of the state's 39 municipalities had ten or more inmates on April 1, 1980. Providence accounted for 45.4 percent of the entire ACI population (45.9 percent of the sentenced population and 43.0 percent of the awaiting trial population). Warwick accounted for 7.7 percent of the population, Pawtucket accounted for 6.6 percent, and Woonsocket accounted for 5.7 percent. Thus residents of only four cities accounted for nearly two-thirds of the inmate population. There were 50 inmates at the ACI who were residents of other states-- 30 from Massachusetts, 5 from other New England States, 6 from New York and 9 from other states.

Just under half (48.6 percent) of the sentenced males from Providence were classified Maximum. The only Rhode Island municipality with a higher percentage of Maximum Security inmates was Central Falls (52.9 percent). In the total ACI population, 44.8 percent of the males were classified Maximum. Out-of-state residents were more likely to be classified Maximum than any other inmates (54.1 percent were classified Maximum). The data for the 13 cities or towns with 10 or more inmates are summarized in the table on the following page. In this table the Open Population refers to Minimum Security, the Drug Unit or Work Release Unit.

City or Town	Total	Sen- tenced	Max.	Med.	Open* Pop.	Sent. Women	All Await. Trial
Bristol	12	9	4	4	1	0	3
Central Falls	22	18	9	6	2	1	4
Coventry	10	9	2	1	6	0	1
Cranston	34	30	11	11	7	1	4
East Providence	20	18	5	5	8	0	2
Johnston	11	8	2	4	2	0	3
Newport	17	12	5	2	4	1	5
North Providence	24	19	9	8	2	0	5
Pawtucket	51	39	19	10	10	0	12
Providence	348	293	141	69	80	3	55
Warwick	59	58	21	19	17	1	1
West Warwick	11	11	7	1	3	0	0
Woonsocket	44	35	12	5	15	3	9

*Minimum, Work Release or Drug Unit

TABLE 15

This table is a cross-tabulation of education and security classification of the sentenced population. The median number of completed years of school was 10.0 for male inmates and 8.5 for females. The highest median education level was found among the Work Release inmates (11.0 years). Inmates in the Drug Unit had a median education of 10.9 years. The median education was 10.2 years for Medium, 9.8 years for Maximum, and 9.5 years for Minimum.

It should be noted that the 142 inmates who reported an educational level of the 12th grade included 79 who received a GED (High School Equivalency) after dropping out of school. In fact, 38 of these inmates received their GED at the ACI, 10 received their GED at an out-of-state prison, and 31 received their GED outside of prison. The most common sources for earning a GED outside of prison were the Armed Forces and OIC (Opportunities Industrialization Center).

TABLE 16

This table is a cross-tabulation of age and race for the sentenced population, the awaiting trial population, and the combined sentenced and awaiting trial population. In the combined population the median age was 25.6. This median was slightly higher for the White population (26.1) than for the Black population (24.4). The Hispanic population had a median age of 28.5. In the sentenced population the median age was 26.5 for Whites, 24.5 for Blacks, and 27.5 for Hispanics. Among the awaiting trial population, the median age was 24.0 for Whites, 23.5 for Blacks and 30.8 for Hispanics.

TABLE 17

This is a cross tabulation of length of sentence and race. No significant relationship between these two variables was discovered.

The median length of sentence was 4.7 years for both Black inmates and White inmates. The higher median of 7.0 years for Hispanics is mainly due to the fact that five of the eighteen sentenced Hispanics were involved in the same crime and were sentenced to between 7.5 and 9.4 years. If these five inmates were removed from the cohort, the median sentence for Hispanics would be similar to that of the Blacks and Whites.

Among lifers, 72.5 percent were Whites, 20.0 percent were Blacks, and 7.5 percent were Hispanics. Ninety-five (95) percent of inmates sentenced to 30 years or over (except life) were White.

TABLE 18

This table is a cross-tabulation of type of offense and race for both sentenced and awaiting trial inmates. The text table on the following page summarizes the highlights of the table.

Robbery is the most common offense for White inmates, Black inmates, and Hispanics. This fact applies to both the sentenced population and the awaiting trial population. Among sentenced inmates, 22.3 percent of the Whites and 31.8 percent of the Blacks were incarcerated for robbery.

Breaking & Entering or Burglary was the second leading offense for all groups except Hispanics. Burglary accounted for 19.3 percent of the White sentenced population, 26.0 percent of the Black sentenced population, and 21.9 percent of the awaiting trial population.

Murder was the third most common type of offense. Fifteen percent of the White sentenced population, but only 6.5 percent of the Black sentenced population were convicted of murder.

Sex offenses accounted for a significant proportion of the population. The sentenced population included 38 convicted of rape, 14 convicted of sexual assault other than rape, and 18 convicted of other sex offenses. Thirteen sex offenders were found among the inmates awaiting trial.

Crimes against person accounted for 64.2 percent of the sentenced population. These offenses accounted for 63.1 percent of the White sentenced population, 64.3 percent of the Black sentenced population, and 88.9 percent of the Hispanic sentenced population.

Property crimes accounted for 27.9 percent of the White sentenced population, 28.6 percent of the Black sentenced population and 5.6 percent of the Hispanic sentenced population.

TABLE 18 (Continued)

Crimes against neither person nor property accounted for 9.0 percent of the White sentenced population, 7.1 percent of the Black sentenced population, and 5.6 percent of the Hispanic sentenced population.

FIVE LEADING OFFENSES OF WHITE INMATES
(Sentenced Population Only)

<u>Offense</u>	<u>Number of Cases</u>	<u>Percent of All Inmates</u>
1. Robbery	104	22.3
2. Breaking & Entering/Burglary	90	19.3
3. Murder	70	15.0
4. Rape	26	5.6
5. Drug Offenses	24	5.2

FIVE LEADING OFFENSES OF BLACK INMATES
(Sentenced Population Only)

<u>Offense</u>	<u>Number of Cases</u>	<u>Percent of All Inmates</u>
1. Robbery	49	31.8
2. Breaking & Entering/Burglary	40	26.0
3. Rape	11	7.1
4. Murder	10	6.5
5/6. Technical Violation of Parole	7	4.5
5/6. Larceny from Person	7	4.5

FIVE LEADING OFFENSES - ALL AWAITING TRIAL INMATES

<u>Offense</u>	<u>Number of Cases</u>	<u>Percent of All Inmates</u>
1. Robbery	30	23.4
2. Breaking & Entering/Burglary	28	21.9
3/4/5 Assault w/Intent to Kill	7	5.5
3/4/5 Non-Assaultive Sex Offenses	7	5.5
3/4/5 Stolen Motor Vehicles	7	5.5

TABLE 19

This table is a cross-tabulation of race, recidivism status and classification. A summary of the data in Table 19 is presented on the following page. Not one of the 20 females incarcerated on April 1, 1980 had incurred a previous sentence of 90 days or more; therefore the analysis of Table 19 is confined to male prisoners.

In the sentenced population at all levels of security, there was a higher percentage of recidivism among the black population than was found among whites or Hispanics. In Maximum Security 63.5 percent of the blacks, 49.5 percent of the whites and 22.2 percent of the Hispanics were serving their second or subsequent sentence (of at least 90 days). In Medium Security the proportion of recidivists was 52.8 percent for blacks, 41.1 percent for whites and 33.3 percent for Hispanics.

In the open securities (Minimum, Work Release and the Drug Unit combined) the blacks were still more likely than whites to have incurred a previous sentence. In the awaiting trial population 29.0 percent of the whites, but only 19.0 percent of the blacks, had incurred a previous sentence.

RECIDIVISM STATUS BY RACE AND CLASSIFICATION

<u>Classification and Race</u>	<u>Percentage with Prior Adult Sentences</u>
All Male Sentenced	45.5
White	43.5
Black	54.3
Hispanic	23.5
Maximum Security	52.1
White	49.5
Black	63.5
Hispanic	22.2
Medium Security	43.3
White	41.1
Black	52.8
Hispanic	33.3
Open Population*	36.9
White	36.8
Black	39.9
Hispanic	0.0
Awaiting Trial (Male)	25.4
White	29.0
Black	19.0
Hispanic	28.6

*Minimum, Drug Unit and Work Release Combined

TABLE 20

This table is a cross-tabulation of type of offense and recidivism status. The findings of this table are summarized in the text table on the following page.

Because violation of parole necessarily means prior incarceration, it is not surprising that 93.8 percent of the technical violators of probation and parole had served a previous sentence. Three other offender types with 50 percent recidivists or more were: (1) inmates convicted of Assault with a Dangerous Weapon (60 percent), (2) drug offenses (50 percent), and (3) Assault with Intent to Murder (50 percent). Three of the four most common types of offender had approximately 47 percent recidivists: i.e. (1) Rape (47.4 percent), (2) Breaking and Entering or Burglary (47.3 percent), and (3) Robbery (47.1 percent). The remaining eight leading categories of offender had 40 percent recidivists or less.

Previous sentences refer to any prior incarceration under sentences of ninety (90) days or longer for any offense (not necessarily the same type of offense) resulting in the incarceration as of April, 1980.

PROPORTION OF RECIDIVISTS FOR THE
FIFTEEN MOST COMMON TYPES OF OFFENDER
(Sentenced Population Only)

	<u>Number of Cases</u>	<u>Percentage with Previous Sentence</u>
1. Robbery	157	47.1
2. Breaking and Entering, Burglary	131	47.3
3. Murder	83	36.1
4. Rape	38	47.4
5. Drug Offenses	28	50.0
6. Assault with Dangerous Weapon	25	60.0
7. Non-Assaultive Sex Offenses	18	27.8
8./9. Violations of Probation or Parole	16	93.8
8./9. Assault with Intent to Murder	16	50.0
./11./12. Sexual Assault (Except Rape)	14	35.7
./11./12. Manslaughter	14	35.7
./11./12. Larceny from Person	14	28.6
13. Arson/Statutory Burning	13	30.8
14./15. Receiving Stolen Goods	10	40.0
14./15. Kidnapping	10	20.0
ALL OFFENSES	639	44.8

TABLE 21

This table is a cross-tabulation of marital status and recidivism status. Among the sentenced inmates, the proportion of recidivists was highest for inmates in common law marriages (71.4 percent) and next highest for divorced inmates (64.9 percent). The proportion of recidivists was 47.8 percent for the married, 41.9 percent for the separated, 40.1 percent for the never married, and 18.3 percent for the widowed.

TABLE 22

This table is a cross-tabulation of education and recidivism status. The table tended to show that inmates with more education were less likely to be recidivists. The median education was 9.6 years for recidivists and 10.2 years for non-recidivists. The pattern of decreasing recidivism with increasing education behaved perfectly for grades six through eleven. The paradoxical jump from 20 percent recidivists for inmates with an eleventh grade education to 54.2 percent for inmates with a twelfth grade education is easily explainable. Of the 77 recidivists with a twelfth grade education, only 20 had graduated from high school with their class. Of the remaining 57 persons, 38 had received a GED (High School Equivalency) in the Rhode Island prison system, 10 had received their GED in out of state prisons and 9 had received a GED from other sources. Among the 65 non-recidivists, only 22 received GED's and 43 had graduated from high school with their class. Therefore, the proportion of recidivists among the inmates

who graduated from high school with their class was only 31.7 percent. Similarly, some of the inmates with 1-3 years college education received some of this education in prison. This leads to the conclusion that the only education that seems to be a valid predictor of recidivism is education as a youth in a regular school program.

TABLE 23

This table is a cross-tabulation of length of sentence and recidivism status. The median length of sentence was slightly longer (5.2 years) for those who had incurred previous adult sentences than the corresponding median for those who had not incurred a previous sentence (4.1 years). The proportion of recidivists was 30.4 percent or lower for four sentence groups - (1) less than six months - 8.3 percent, (2) 18 months - 23.3 percent, (3) 6.0-16.0 months - 28.8 percent, and (4) 21-27 years - 30.4 percent. The proportion of recidivists was between 40 and 50 percent for seven sentence groupings:

- (1) Lifers - 45.0 percent
- (2) 1.6-2.4 years - 45.9 percent
- (3) 2.5-3.4 years - 46.5 percent
- (4) 9.5-10.4 years - 47.4 percent
- (5) 10.5-14.4 years - 47.8 percent
- (6) 4.5-5.4 years - 48.4 percent
- (7) 5.5-7.4 years - 49.1 percent

The proportion of recidivists was above 50 percent for six sentence groupings:

- (1) 7.5-9.4 years - 51.9 percent
- (2) 3.5-4.4 years - 56.3 percent
- (3) 14.5-15.4 years - 57.9 percent
- (4) 19.5-20.4 years - 59.1 percent
- (5) 30 years or over, except life - 60 percent
- (6) 15.5-19.4 years - 62.5 percent

TABLE 24

This table is a cross-tabulation of recidivism status and juvenile incarceration. This table shows a high correlation between juvenile incarceration and adult recidivism status. Among the 269 sentenced inmates who had been to the Training School for Boys and Girls, 58 percent had prior adult sentences. In contrast, the proportion of recidivists was only 35.1 percent for those who had not been to the the Training School. Among the awaiting trial population the proportion of recidivists was 34.1 percent for former Training School residents but only 17.9 percent for inmates who had never been to the Training School.

TABLE 25

This table is a cross-tabulation of age and former incarceration at the Training School for Boys and Girls. This table shows that younger inmates were much more likely to have Training School experience than older inmates. Over half of the inmates aged 17-20 had been to the Training School. Among the sentenced population, the median age was 24.8 for inmates with Training School experience and 26.9 for inmates with no Training School experience. Among the awaiting trial population, the median age was 22.2 for those with Training School experience and 25.2 for those without Training School experience. The text table below summarizes these data.

PROPORTION OF INMATES WITH
TRAINING SCHOOL EXPERIENCE BY AGE

Age Group	Sentenced Population	Awaiting Trial Population
17-20	56.8	48.7
21-22	47.6	29.4
23-24	41.5	43.8
25-29	44.4	29.0
30-34	28.2	23.1
35-39	31.1	25.0
40-49	41.5	0.0
50+	21.7	0.0

TABLE 26

This table is a cross-tabulation of race and juvenile incarceration. A much higher proportion of former Training School residents was found among black inmates than was found among either whites or Hispanics. Among the sentenced population, 57.1 percent of the blacks, 38.2 percent of the whites, and 16.7 percent of the Hispanics were former Training School residents. Among the awaiting trial population, 42.6 percent of the blacks, 32.4 percent of the whites, and none of the Hispanics had been to the Training School.

TABLE 27

This table is a cross-tabulation of type of offense and former Training School incarceration. The four categories of offense with very high percentages of former Training School residents were:

- (1) Assault without Dangerous Weapon - 83.3 percent
- (2) Weapons Offenses - 75 percent
- (3) Stolen Motor Vehicles - 71.4 percent
- (4) Violations of Probation or Parole 56.3 percent

The four categories of offender with about 50 percent former Training School residents were:

- (1) Breaking and Entering or Burglary - 51.9 percent
- (2) Robbery - 50.3 percent
- (3) Larceny from Person - 50 percent
- (4) Kidnapping - 50 percent

Two categories of offender had between 40 and 49 percent former Training School residents, they were:

- (1) Assault with Intent to Rob - 42.9 percent
- (2) Receiving Stolen Goods - 40 percent

Five categories had between 30 and 39 percent former Training School residents:

- (1) Assault with a Dangerous Weapon - 36 percent
- (2) Murder - 33.7 percent
- (3) Drug Offenses - 32.1 percent
- (4) Rape - 31.6 percent
- (5) Assault with Intent to Murder - 31.3 percent

The remaining eight categories of offender had fewer than 30 percent who had been to the Training School:

- (1) Manslaughter - 28.6 percent
- (2) Sexual Assault (Except Rape) - 28.6 percent
- (3) Arson or Statutory Burning - 23.1 percent
- (4) Other Offenses (See Table 27) - 20 percent
- (5) Non-Assaultive Sex Offenses - 11.1 percent
- (6) Larceny (Not Motor Vehicle) - 0 percent
- (7) Forging and Uttering - 0 percent
- (8) Other Crimes Against Property (See Table 27) - 0 percent

TABLE 28

This table is a cross-tabulation of age and length of sentence. The median length of sentence increased with

increasing age through the age of 50. The median length of sentence was:

- (1) 2.2 years for ages 17-20
- (2) 3.3 years for ages 21-22
- (3) 3.7 years for ages 23-24
- (4) 5.5 years for ages 25-29
- (5) 7.2 years for ages 30-34
- (6) 10.0 years for ages 35-39
- (7) 19.6 years for ages 40-49

The median age was:

- (1) Near 23 years of age for those sentenced to less than 4.4 years.
- (2) Between 25.1 and 26.8 for those sentenced to between 5 and 14 years.
- (3) Over 30 for those sentenced to 15 years or longer

TABLE 29

This table is a detailed cross-tabulation of offense and length of sentence. Many of the offenses had a wide range of sentences. The longest, shortest and median length of sentence for 22 categories of offense are given in the table on the following page.

TYPE OF OFFENSE*	NUMBER OF CASES	SENTENCE IN YEARS		
		LONGEST SENTENCE	SHORTEST SENTENCE	MEDIAN LENGTH
1. Murder	82**	Life	10.0**	35.0
2. Manslaughter	14	30.0	5.0	13.5
3. Rape	38	Life	4.0	12.0
4. Assault w/Intent to Murder	16	45.0	3.0	12.0
5. Kidnapping	10	Life	4.0	9.0
6. Incest	4	10.0	3.0	6.0
7. Robbery	157	Life	2.0	6.0
8. Assault w/Intent to Rape	6	12.0	1.5	5.0
9. Forging, Uttering or Publishing	4	7.5	1.0	3.5
10. Abominable and Detestable Crime Against Nature	11	10.0	2.0	3.0
11. Assault with a Dangerous Weapon	25	10.1	1.0	3.0
12. Sexual Assault Second Degree (or Indecent Assault)	8	7.0	1.0	2.5
13. Assault with Intent to Rob	7	30.0	1.0	2.5
14. Firearms Violations	8	3.8	8 months	2.0
15. Breaking & Entering or Burglary	131	17.0	30 days	2.0
16. Arson Or Statutory Burning	13	10.0	1.5	2.0
17. Drug Offenses	28	20.2	9 months	2.0
18. Stolen Motor Vehicles	7	5.0	10.5 months	2.0
19. Receiving Stolen Goods	10	3.0	9 months	1.8
20. Larceny from Person	14	10.0	1.0	1.5
21. Assault (not elsewhere classified)	6	3.0	3 months	1.0
22. Larceny (Not Motor Vehicle)	5	5.0	30 days	1.0

*Excludes violators of parole as a category (see Table 29)

**Excludes one Conspiracy to Murder case.

TABLE 30

This table is a detailed list of the residence of all inmates by city or town and census tract. Providence had by far the most inmates and the highest incarceration rate. The 348 inmates from Providence accounted for 45.5 percent of all the inmates and 48.5 percent of the inmates who were Rhode Island residents. The incarceration rate for the City of Providence was 222.48 inmates per 100,000 population.

The city with the second highest incarceration rate was Central Falls. The 22 inmates from Central Falls resulted in an incarceration rate of 130.17 per 100,000 population.

The five cities with the highest incarceration rates were completed by Woonsocket (95.91), North Providence (78.72), and Pawtucket (71.80). The table below lists the 13 cities and towns with 10 or more inmates and the city or town incarceration rates are also calculated.

CITIES OR TOWNS WITH 10 OR MORE INMATES

		Incarceration Rate Per 100,000 Population
1. Providence	348	222.48
2. Warwick	59	67.77
3. Pawtucket	51	71.80
4. Woonsocket	44	95.91
5. Cranston	34	47.20
6. North Providence	23	78.72
7. Central Falls	22	130.17
8. East Providence	20	39.25
9. Newport	17	58.09
10./11. Johnston	12	48.32
10./11. Bristol	12	59.51
12. West Warwick	11	40.78
13. Coventry	10	37.06

Because Providence had such a high incarceration rate, an analysis by neighborhood in Providence is in order. An approximate neighborhood definition of the census tracts and number of inmates by neighborhood is listed in the table below.

<u>Neighborhood</u>	<u>Census Tracts</u>	<u>Number of Inmates</u>
South Providence	4-7	80
West End	12-15	43
Federal Hill-Olneyville	8-11, 19	38
Annex-Manton	16-18, 20	37
Elmwood	2-3	37
Hope	30-33	27
Smith Hill-Lower Mt. Pleasant	22, 25, 26	26
Eagle Park-Warwick	27-29	24
Washington Park	1	18
Elmhurst-Upper Mt. Pleasant	21, 23, 24	10
College Hill-Fox Point	36-37	5
East Side	34-35	3

TABLE 31

This is the only table that does not deal with the population of the ACI on any specific date, but deals instead with the inmates discharged from the ACI by either expiration of sentence or parole in 1979. The purpose of this table is to present to the reader the amount of time an inmate actually serves when sentenced to a given amount of time. This table only includes inmates

sentenced to at least 12.2 months. Inmates sentenced to 6 months or less are not eligible for parole and accumulate very little other credits, therefore, a man sentenced to 90 days will serve 90 days. This is not so for inmates sentenced to longer periods of time. The table on the next page gives six different ranges of sentence along with the amount of time a man sentenced to this range of sentences can actually expect to serve.

As can be observed by the table, increasing sentences have a diminishing effect on time actually served as the sentence becomes longer. For example, a man sentenced to two years serves an average of nearly 4½ months longer than a man sentenced to 1½ years, but: (1) A man sentenced to three years serves an average of 7½ months longer than a man doing two years; (2) A man serving five years serves about one year longer than a man doing three years; (3) A man doing six years serves less than half a year more than a man doing five years and; (4) A man doing 10 years serves an average of less than 18 months longer than a man doing six years.

SIX MOST COMMON SENTENCE RANGES
BY TIME ACTUALLY SERVED

<u>Sentence Range</u>	<u>Mean Time Served</u> <u>(Months)</u>	<u>Parolees</u> <u>(Months)</u>	<u>Those Whose Sentence Expired</u> <u>(Months)</u>
18.0-19.5 months	12.8	9.6	15.3
24-25 months	17.1	14.0	20.3
36-41 months	24.8	19.8	30.5
60-64 months	37.3	32.0	46.2
6 years	42.9	39.4	51.1
10 years	59.6	54.1	68.8

TABLE 1

DISTRIBUTION OF THE MALE SENTENCED INMATES
BY
SECURITY CLASSIFICATION
APRIL 1, 1980 - SEPTEMBER 1, 1977

	<u>APRIL 1, 1980</u>		<u>SEPTEMBER 1, 1977</u>	
	NUMBER	PERCENT	NUMBER	PERCENT
TOTAL INMATES	629	100.0	574	100.0
MAXIMUM	282	44.8	332	57.8
MEDIUM#	171	27.2	135	23.5
MINIMUM	107	17.0	78	13.6
WORK RELEASE	58	9.2	29	5.1
DRUG UNIT	11	1.7		

*The Drug Unit did not exist in 1977.

#In 1977, Medium Security was for all practical purposes,
a Maximum Security Unit with protective custody.

TABLE 2

RACIAL COMPOSITION OF THE ACI INMATE POPULATION

ACCORDING TO SECURITY CLASSIFICATION

APRIL 1, 1980

	ALL RACES	WHITE		BLACK		HISPANIC*		OTHER RACES	
	NUMBER	NUMBER	PERCENT	NUMBER	PERCENT	NUMBER	PERCENT	NUMBER	PERCENT
ALL INMATES	767	540	70.4	201	26.2	25	3.3	1	0.1
Sentenced	639	466	72.9	154	24.1	18	2.8	1	0.2
Awaiting Trial	128	74	57.8	47	36.7	7	5.5	0	---
ALL MALES	747	529	70.8	193	25.8	24	3.2	1	0.1
Sentenced	629	460	73.1	151	24.0	17	2.7	1	0.2
Maximum	282	198	70.2	74	26.2	9	3.2	1	0.4
Medium	171	129	75.4	36	21.1	6	3.5	0	---
Minimum	107	76	71.0	30	28.0	1	0.9	0	---
Work Release	58	47	81.0	10	17.2	1	1.7	0	---
Drug Unit	11	10	90.9	1	9.1	0	---	0	---
Awaiting Trial	118	69	58.5	42	35.6	7	5.9	0	---
ALL FEMALES	20	11	55.0	8	40.0	1	5.0	0	---
Sentenced	10	6	60.0	3	30.0	1	10.0	0	---
Awaiting Trial	10	5	50.0	5	50.0	0	---	0	---

*These could be either white or black

TABLE 2A

RACIAL COMPOSITION OF THE ACI INMATE POPULATION

ACCORDING TO SECURITY CLASSIFICATION

SEPTEMBER 1, 1977

	ALL RACES	WHITE		BLACK		HISPANIC*		OTHER RACES	
	NUMBER	NUMBER	PERCENT	NUMBER	PERCENT	NUMBER	PERCENT	NUMBER	PERCENT
ALL INMATES	684	497	72.7	164	24.0	20	2.9	3	0.4
Sentenced	586	428	73.0	146	24.9	10	1.7	2	0.3
Awaiting Trial	98	69	70.4	18	18.4	10	10.2	1	1.0
ALL MALES	669	489	73.1	158	23.6	20	3.0	2	0.3
Sentenced	574	421	73.3	142	24.7	10	1.7	1	0.2
Maximum	332	246	74.1	77	23.2	8	2.4	1	0.3
Medium	135	97	71.9	37	27.4	1	0.7	0	---
Minimum	78	57	73.1	20	25.6	1	1.3	0	---
Work Release	29	21	72.4	8	27.6	0	---	0	---
Awaiting Trial	95	68	71.6	16	16.8	10	10.5	1	1.1
Maximum	66	45	68.2	13	19.7	7	10.6	1	1.5
Medium	29	23	79.3	3	10.3	3	10.3	0	---
ALL FEMALES	15	8	53.3	6	40.0	0	---	1	6.7
Sentenced	12	7	58.3	4	33.3	0	---	1	8.3
Awaiting Trial	3	1	33.3	2	66.7	0	---	0	---

*These could be either black or white.

TABLE 2B

DISTRIBUTION OF THE MALE SENTENCED INMATES

BY

SECURITY CLASSIFICATION AND RACE

APRIL 1, 1980 - SEPTEMBER 1, 1977

PERCENTAGE DISTRIBUTION BY RACE

	<u>TOTAL</u>	<u>WHITE</u>	<u>BLACK</u>	<u>HISPANIC*</u>	<u>OTHER RACES</u>
ALL SECURITIES					
1977	100.0	73.3	24.7	1.7	0.2
1980	100.0	73.1	24.0	2.7	0.2
MAXIMUM					
1977	100.0	74.1	23.2	2.4	0.3
1980	100.0	70.2	26.2	3.2	0.4
MEDIUM					
1977	100.0	71.9	27.4	0.7	0.0
1980	100.0	75.4	21.1	3.5	0.0
MINIMUM					
1977	100.0	73.1	25.6	1.3	0.0
1980	100.0	71.0	28.0	0.9	0.0
WORK RELEASE					
1977	100.0	72.4	27.6	0.0	0.0
1980	100.0	81.0	17.2	1.7	0.0
DRUG UNIT#					
1980	100.0	90.9	9.1	0.0	0.0

*These inmates could be white or black.

#The Drug Unit did not exist on September 1, 1977.

TABLE 3

INMATES OF THE ACI
ACCORDING TO AGE AND CLASSIFICATION

APRIL 1, 1980

	ALL AGES	17-20		21-22		23-24		25-29	
	NUMBER	NUMBER	PERCENT	NUMBER	PERCENT	NUMBER	PERCENT	NUMBER	PERCENT
ALL INMATES	767	120	15.6	120	15.6	122	15.9	193	25.2
Sentenced	639	81	12.7	103	16.1	106	16.6	162	25.4
Awaiting Trial	128	39	30.5	17	13.3	16	12.5	31	24.2
ALL MALES	747	116	15.5	119	15.9	118	15.8	190	25.4
Sentenced	629	80	12.7	103	16.4	104	16.5	161	25.6
Maximum	282	35	12.4	39	13.8	51	18.1	72	25.5
Medium	171	29	17.0	35	20.5	23	13.5	49	28.7
Minimum	107	11	10.3	21	19.6	19	17.8	21	19.6
Work Release	58	5	8.6	8	13.8	9	15.5	12	20.7
Drug Unit	11	0	----	0	----	2	18.2	7	63.6
Awaiting Trial	118	36	30.5	16	13.6	14	11.9	29	24.6
ALL FEMALES	20	4	20.0	1	5.0	4	20.0	3	15.0
Sentenced	10	1	10.0	0	----	2	20.0	1	10.0
Awaiting Trial	10	3	30.0	1	10.0	2	20.0	2	20.0

TABLE 3 (CONTINUED)

INMATES OF THE ACI
ACCORDING TO AGE AND CLASSIFICATION
APRIL 1, 1980

	<u>30-34</u>		<u>35-39</u>		<u>40-49</u>		<u>50 or OLDER</u>		<u>MEDIAN AGE</u>
	NUMBER	PERCENT	NUMBER	PERCENT	NUMBER	PERCENT	NUMBER	PERCENT	
ALL INMATES	91	11.9	49	6.4	47	6.1	25	3.3	25.6
Sentenced	78	12.2	45	7.0	41	6.4	23	3.6	25.9
Awaiting Trial	13	10.2	4	3.1	6	4.7	2	1.6	24.0
ALL MALES	85	11.4	48	6.4	47	6.3	24	3.2	25.5
Sentenced	74	11.8	44	7.0	41	6.5	22	3.5	25.9
Maximum	40	14.2	22	7.8	16	5.7	7	2.5	26.1
Medium	20	11.7	5	2.9	8	4.7	2	1.2	24.9
Minimum	8	7.5	9	8.4	10	9.3	8	7.5	25.6
Work Release	4	6.9	8	13.8	7	12.1	5	8.6	27.9
Drug Unit	2	18.2	0	----	0	----	0	----	27.5
Awaiting Trial	11	9.3	4	3.4	6	5.1	2	1.7	24.0
ALL FEMALES	6	30.0	1	5.0	0	----	1	5.0	26.7
Sentenced	4	40.0	1	10.0	0	----	1	10.0	31.3
Awaiting Trial	2	20.0	0	----	0	----	0	----	24.0

TABLE 3A

INMATES OF THE ACI
ACCORDING TO AGE AND CLASSIFICATION
SEPTEMBER 1, 1977

	<u>ALL AGES</u>	<u>17-20</u>		<u>21-22</u>		<u>23-24</u>		<u>25-29</u>	
	NUMBER	NUMBER	PERCENT	NUMBER	PERCENT	NUMBER	PERCENT	NUMBER	PERCENT
ALL INMATES	684	80	11.7	124	18.1	92	13.5	171	25.0
Sentenced	586	46	7.8	98	16.7	84	14.3	156	26.6
Awaiting Trial	98	34	34.7	26	26.5	8	8.2	15	15.3
ALL MALES	669	79	11.8	120	17.9	92	13.8	167	25.0
Sentenced	574	46	8.0	96	16.7	84	14.6	152	26.5
Maximum	332	23	6.9	66	19.9	45	13.6	81	24.4
Medium	135	16	11.9	21	15.6	27	20.0	44	32.6
Minimum	78	5	6.4	8	10.3	11	14.1	21	26.9
Work Release	29	2	6.9	1	3.4	1	3.4	6	20.7
Awaiting Trial	95	33	34.7	24	25.3	8	8.4	15	15.8
Maximum	66	19	28.8	17	25.8	6	9.1	12	18.2
Medium	29	14	48.3	7	24.1	2	6.9	3	10.3
ALL FEMALES	15	1	6.7	4	26.7	0	----	4	26.7
Sentenced	12	0	----	2	16.7	0	----	4	33.3
Awaiting Trial	3	1	33.3	2	66.7	0	----	0	----

TABLE 3A (CONTINUED)

INMATES OF THE ACI
ACCORDING TO AGE AND CLASSIFICATION
SEPTEMBER 1, 1977

	<u>30-34</u>		<u>35-39</u>		<u>40 49</u>		<u>50 or OLDER</u>		<u>MEDIAN AGE</u>
	NUMBER	PERCENT	NUMBER	PERCENT	NUMBER	PERCENT	NUMBER	PERCENT	
ALL INMATES	91	13.3	64	9.4	37	5.4	25	3.7	26.3
Sentenced	87	14.8	57	9.7	34	5.8	24	4.1	27.1
Awaiting Trial	4	4.1	7	7.1	3	3.1	1	1.0	22.2
ALL MALES	87	13.0	62	9.3	37	5.5	24	3.6	26.3
Sentenced	83	14.5	55	9.6	34	5.9	24	4.2	27.0
Maximum	49	14.8	33	9.9	23	6.9	12	3.6	27.0
Medium	16	11.9	2	1.5	4	3.0	5	3.7	25.4
Minimum	11	14.1	13	16.7	5	6.4	4	5.1	28.6
Work Release	7	24.1	7	24.1	2	6.9	3	10.3	33.2
Awaiting Trial	4	4.2	7	7.4	3	3.2	1	1.1	22.2
Maximum	4	6.1	5	7.6	3	4.5	0	----	22.6
Medium	0	----	2	6.9	0	----	1	3.4	21.1
ALL FEMALES	4	26.7	2	13.3	0	----	0	----	28.1
Sentenced	4	33.3	2	16.7	0	----	0	----	30.0
Awaiting Trial	0	----	0	----	0	----	0	----	22.0

TABLE 4

PERCENTAGE DISTRIBUTION OF THE MALE SENTENCED POPULATION
 ACCORDING TO AGE AND CLASSIFICATION
 SEPTEMBER 1, 1977 - APRIL 1, 1980

AGE GROUP	MAXIMUM		CLASSIFICATION		MINIMUM		(PERCENTAGE DISTRIBUTION)			
	1977	1980	1977	1980	1977	1980	WORK RELEASE		DRUG UNIT	
							1977	1980	1977	1980
ALL AGES	57.8	44.8	23.5	27.2	13.6	17.0	5.1	9.2	*	1.7
17-20	50.0	43.8	34.8	36.3	10.9	13.8	4.3	6.3	*	---
21-22	68.8	37.9	21.9	34.0	8.3	20.4	1.0	7.8	*	---
23-24	53.6	49.0	32.1	22.1	13.1	18.3	1.2	8.7	*	1.9
25-29	53.3	44.7	28.9	30.4	13.8	13.0	3.9	7.5	*	4.3
30-34	59.0	54.1	19.3	27.0	13.3	10.8	8.4	5.4	*	2.7
35-39	60.0	50.0	3.6	11.4	23.6	20.5	12.7	18.2	*	---
40-49	67.6	39.0	11.8	19.5	14.7	24.4	5.9	17.1	*	---
50 or over	50.0	31.8	20.8	9.1	16.7	36.4	12.5	22.7	*	---
MEDIAN AGE	27.0	26.1	25.4	24.9	28.6	25.6	33.2	27.9	*	27.5

*The Drug Unit did not exist in 1977.

TABLE 5

ACI POPULATION ACCORDING TO SECURITY CLASSIFICATION

AND

MARITAL STATUS UPON ADMISSION

APRIL 1, 1980*

	<u>ALL INMATES</u>	<u>NEVER MARRIED</u>		<u>MARRIED</u>		<u>COMMON LAW MARRIAGE</u>	
	NUMBER	NUMBER	PERCENT	NUMBER	PERCENT	NUMBER	PERCENT
ALL INMATES	767	472	61.5	141	18.4	15	2.0
Sentenced	639	394	61.7	115	18.0	14	2.2
Awaiting Trial	128#	78	60.9	26	20.3	1	0.8
ALL MALES	747	461	61.7	137	18.3	15	2.0
Sentenced	629	389	61.8	113	18.0	14	2.2
Maximum	282	175	62.1	50	17.7	6	2.1
Medium	171	117	68.4	32	18.7	2	1.2
Minimum	107	65	60.7	14	13.1	4	3.7
Work Release	58	25	43.1	17	29.3	2	3.4
Drug Unit	11	7	63.6	0	----	0	----
Awaiting Trial	118#	72	61.0	24	20.3	1	0.8
ALL FEMALES	20	11	55.0	4	20.0	0	----
Sentenced	10	5	50.0	2	20.0	0	----
Awaiting Trial	10#	6	60.0	2	20.0	0	----

*No comparable data exist for September 1, 1977.

#Marital Status data on the awaiting trial population and inmates sentenced to less than six months are often unverified and therefore less reliable than data on inmates sentenced to six months or longer.

TABLE 5 (CONTINUED)

	<u>SEPARATED</u>		<u>DIVORCED</u>		<u>WIDOWED</u>	
	NUMBER	PERCENT	NUMBER	PERCENT	NUMBER	PERCENT
ALL INMATES	40	5.2	87	11.3	12	1.6
Sentenced	31	4.9	74	11.6	11	1.7
Awaiting Trial#	9	7.0	13	10.2	1	0.8
ALL MALES	38	5.1	85	11.4	11	1.5
Sentenced	30	4.8	73	11.6	10	1.6
Maximum	11	3.9	36	12.8	4	1.4
Medium	6	3.5	13	7.6	1	0.6
Minimum	7	6.5	15	14.0	2	1.9
Work Release	5	8.6	6	10.3	3	5.2
Drug Unit	1	9.1	3	27.3	0	---
Awaiting Trial#	8	6.8	12	10.2	1	0.8
ALL FEMALES	2	10.0	2	10.0	1	0.5
Sentenced	1	10.0	1	10.0	1	10.0
Awaiting Trial#	1	10.0	1	10.0	0	---

TABLE 6

SECURITY CLASSIFICATION OF INMATES
AT THE ADULT CORRECTIONAL INSTITUTION

ACCORDING TO CHARGE

APRIL 1, 1980

	<u>ALL OFFENSES</u>		<u>CRIMES AGAINST PERSON</u>		<u>MURDER</u>		<u>MANSLAUGHTER</u>	
	NUMBER	PERCENT	NUMBER	PERCENT	NUMBER	PERCENT	NUMBER	PERCENT
ALL INMATES	767	100.0	476	62.1	87	11.3	14	1.8
Sentenced	639	100.0	410	64.2	83	13.0	14	2.2
Awaiting Trial	128	100.0	66	51.6	4	3.1	0	---
ALL MALES	747	100.0	460	61.6	83	11.1	14	1.9
Sentenced	629	100.0	400	63.6	79	12.6	14	2.2
Maximum	282	100.0	175	62.1	40	14.2	5	1.8
Medium	171	100.0	111	64.9	14	8.2	6	3.5
Minimum	107	100.0	72	67.3	15	14.0	0	---
Work Release	58	100.0	36	62.1	10	17.2	3	5.2
Drug Unit	11	100.0	6	54.5	0	----	0	---
Awaiting Trial	118	100.0	60	50.8	4	3.4	0	---
ALL FEMALES	20	100.0	16	80.0	4	20.0	0	---
Sentenced	10	100.0	10	100.0	4	40.0	0	---
Awaiting Trial	10	100.0	6	60.0	0	----	0	---

TABLE 6 (CONTINUED)

	<u>ASSAULT WITH INTENT TO MURDER</u>		<u>KIDNAPPING</u>		<u>ROBBERY</u>		<u>ASSAULT WITH INTENT TO ROB</u>		<u>RAPE</u>	
	NUMBER	PERCENT	NUMBER	PERCENT	NUMBER	PERCENT	NUMBER	PERCENT	NUMBER	PERCENT
ALL INMATES	23	3.0	11	1.4	187	24.4	9	1.2	41	5.3
Sentenced	16	2.5	10	1.6	157	24.6	7	1.1	38	5.9
Awaiting Trial	7	5.5	1	0.8	30	23.4	2	1.6	3	2.3
ALL MALES	23	3.1	11	1.5	181	24.2	9	1.2	41	5.5
Sentenced	16	2.5	10	1.6	152	24.2	7	1.1	38	6.0
Maximum	9	3.2	5	1.8	65	23.0	4	1.4	14	5.0
Medium	4	2.3	1	0.6	49	28.7	2	1.2	14	8.2
Minimum	2	1.9	3	2.8	24	22.4	1	0.9	8	7.5
Work Release	1	1.7	1	1.7	9	15.5	0	---	2	3.4
Drug Unit	0	---	0	---	5	45.5	0	---	0	---
Awaiting Trial	7	5.9	1	0.8	29	24.6	2	1.7	3	2.5
ALL FEMALES	0	---	0	---	6	30.0	0	---	0	---
Sentenced	0	---	0	---	5	50.0	0	---	0	---
Awaiting Trial	0	---	0	---	1	10.0	0	---	0	---

- 58 -

TABLE 6 (CONTINUED)

	<u>SEXUAL ASSAULT (EXCEPT RAPE)</u>		<u>OTHER SEX OFFENSES</u>		<u>ASSAULT WITH DANGEROUS WEAPONS</u>		<u>ASSAULT-NOT CLASSIFIED ELSEWHERE</u>		<u>WEAPONS OFFENSES</u>	
	NUMBER	PERCENT	NUMBER	PERCENT	NUMBER	PERCENT	NUMBER	PERCENT	NUMBER	PERCENT
ALL INMATES	17	2.2	25	3.3	29	3.8	10	1.3	8	1.0
Sentenced	14	2.2	18	2.8	25	3.9	6	0.9	8	1.3
Awaiting Trial	3	2.3	7	5.5	4	3.1	4	3.1	0	---
ALL MALES	17	2.3	20	2.7	29	3.9	9	1.2	8	1.1
Sentenced	14	2.2	18	2.9	25	4.0	5	0.8	8	1.3
Maximum	7	2.5	6	2.1	10	3.5	2	0.7	5	1.8
Medium	5	2.9	2	1.2	8	4.7	1	0.6	0	---
Minimum	2	1.9	6	5.6	2	1.9	2	1.9	2	1.9
Work Release	0	---	4	6.9	4	6.9	0	---	1	1.7
Drug Unit.	0	---	0	---	1	9.1	0	---	0	---
Awaiting Trial	3	2.5	2	1.7	4	3.4	4	3.4	0	---
ALL FEMALES	0	---	5	25.0	0	---	1	5.0	0	---
Sentenced	0	---	0	---	0	---	1	10.0	0	---
Awaiting Trial	0	---	5	50.0	0	---	0	---	0	---

TABLE 6 (CONTINUED)

	<u>CRIMES AGAINST PROPERTY</u>		<u>BREAKING AND ENTERING</u>		<u>STOLEN MOTOR VEHICLE</u>		<u>LARCENY FROM PERSON</u>	
	NUMBER	PERCENT	NUMBER	PERCENT	NUMBER	PERCENT	NUMBER	PERCENT
ALL INMATES	224	29.2	159	20.7	14	1.8	15	2.0
Sentenced	175	27.4	131	20.5	7	1.1	14	2.2
Awaiting Trial	49	38.3	28	21.9	7	5.5	1	0.8
ALL MALES	221	29.6	157	21.0	14	1.9	15	2.0
Sentenced	175	27.8	131	20.8	7	1.1	14	2.2
Maximum	80	28.4	63	22.3	4	1.4	3	1.1
Medium	47	27.5	35	20.5	0	---	5	2.9
Minimum	28	26.2	21	19.6	3	2.8	5	4.7
Work Release	18	31.0	11	19.0	0	---	1	1.7
Drug Unit	2	18.2	1	9.1	0	---	0	---
Awaiting Trial	46	39.0	26	22.0	7	5.9	1	0.8
ALL FEMALES	3	15.0	2	10.0	0	---	0	---
Sentenced	0	---	0	---	0	---	0	---
Awaiting Trial	3	30.0	2	20.0	0	---	0	---

TABLE 6 (CONTINUED)

	LARCENY (NOT MOTOR VEHICLE)		RECEIVE STOLEN GOODS		FORGING UTTERING, ETC.		ARSON STATUTORY BURNING	
	NUMBER	PERCENT	NUMBER	PERCENT	NUMBER	PERCENT	NUMBER	PERCENT
ALL INMATES								
Sentenced	6	0.8	14	1.8	8	1.0	15	2.0
Awaiting Trial	5	0.8	10	1.6	4	0.6	13	2.0
	1	0.8	4	3.1	4	3.1	2	1.6
ALL MALES								
Sentenced	6	0.8	13	1.7	8	1.1	15	2.0
Maximum	5	0.8	10	1.6	4	0.6	13	2.1
Medium	2	0.7	4	1.4	1	0.4	5	1.8
Minimum	3	1.8	2	1.2	2	1.2	3	1.8
Work Release	0	---	2	1.9	0	---	2	1.9
Drug Unit	0	---	1	1.7	1	1.7	3	5.2
Awaiting Trial	0	---	1	9.1	0	---	0	---
	1	0.8	3	2.5	4	3.4	2	1.7
ALL FEMALES								
Sentenced	0	---	1	5.0	0	---	0	---
Awaiting Trial	0	---	0	---	0	---	0	---
	0	---	1	10.0	0	---	0	---

TABLE 6 (CONTINUED)

	OTHER PROPERTY CRIMES		DRUG OFFENSES		VIOLATORS OF PROBATION OR PAROLE		OTHER OFFENSES	
	NUMBER	PERCENT	NUMBER	PERCENT	NUMBER	PERCENT	NUMBER	PERCENT
ALL INMATES								
Sentenced	8	1.0	31	4.0	18	2.3	18	2.3
Awaiting Trial	5	0.8	28	4.4	16	2.5	10	1.6
	3	2.3	3	2.3	2	1.6	8	6.3
ALL MALES								
Sentenced	8	1.1	30	4.0	18	2.4	18	2.4
Maximum	5	0.8	28	4.5	16	2.5	10	1.6
Medium	1	0.4	12	4.3	9	3.2	6	2.1
Minimum	2	1.2	7	4.1	4	2.3	2	1.2
Work Release	0	---	4	3.7	2	1.9	1	0.9
Drug Unit	2	3.4	3	5.2	0	---	1	1.7
Awaiting Trial	0	---	2	18.2	1	9.1	0	---
	3	2.5	2	1.7	2	1.7	8	6.8
ALL FEMALES								
Sentenced	0	---	1	5.0	0	---	0	---
Awaiting Trial	0	---	0	---	0	---	0	---
	0	---	1	10.0	0	---	0	---

TABLE 6A

SECURITY CLASSIFICATION OF INMATES
AT THE ADULT CORRECTIONAL INSTITUTION
ACCORDING TO CHARGE
SEPTEMBER 1, 1977

	<u>ALL OFFENSES</u>		<u>CRIMES AGAINST PERSON</u>		<u>MURDER</u>		<u>MANSLAUGHTER</u>	
	NUMBER	PERCENT	NUMBER	PERCENT	NUMBER	PERCENT	NUMBER	PERCENT
ALL INMATES	684	100.0	417	61.0	91	13.3	16	2.3
Sentenced	586	100.0	364	62.1	81	13.8	15	2.6
Awaiting Trial	98	100.0	53	54.1	10	10.2	1	1.0
ALL MALES	669	100.0	407	60.8	88	13.2	15	2.2
Sentenced	574	100.0	356	62.0	78	13.6	14	2.4
Maximum	332	100.0	201	60.5	41	12.3	8	2.4
Medium	135	100.0	79	58.5	11	8.1	1	0.7
Minimum	78	100.0	51	65.4	13	16.7	3	3.8
Work Release	29	100.0	25	86.2	13	44.8	2	6.9
Awaiting Trial	95	100.0	51	53.7	10	10.5	1	1.1
Maximum	66	100.0	33	50.0	5	7.6	1	1.5
Medium	29	100.0	18	62.1	5	17.2	0	---
ALL FEMALES	15	100.0	10	66.7	3	20.0	1	6.7
Sentenced	12	100.0	8	66.7	3	25.0	1	8.3
Awaiting Trial	3	100.0	2	66.7	0	----	0	----

TABLE 6A (CONTINUED)

	ASSAULT WITH INTENT TO MURDER		KIDNAPPING		ROBBERY		ASSAULT WITH INTENT TO ROB		RAPE	
	NUMBER	PERCENT	NUMBER	PERCENT	NUMBER	PERCENT	NUMBER	PERCENT	NUMBER	PERCENT
ALL INMATES	23	3.4	12	1.8	153	22.4	10	1.5	25	3.7
Sentenced	17	2.9	9	1.5	132	22.5	10	1.7	24	4.1
Awaiting Trial	6	6.1	3	3.1	21	21.4	0	---	1	1.0
ALL MALES	23	3.4	12	1.8	149	22.3	10	1.5	25	3.7
Sentenced	17	3.0	9	1.6	129	22.5	10	1.7	24	4.2
Maximum	12	3.6	5	1.5	73	22.0	4	1.2	13	3.9
Medium	3	2.2	1	0.7	36	26.7	2	1.5	8	5.9
Minimum	1	1.3	1	1.3	14	17.9	3	3.8	3	3.8
Work Release	1	3.4	2	6.9	6	20.7	1	3.4	0	---
Awaiting Trial	6	6.3	3	3.2	20	21.1	0	---	1	1.1
Maximum	4	6.1	3	4.5	13	19.7	0	---	1	1.5
Medium	2	6.9	0	---	7	24.1	0	---	0	---
ALL FEMALES	0	---	0	---	4	26.7	0	---	0	---
Sentenced	0	---	0	---	3	25.0	0	---	0	---
Awaiting Trial	0	---	0	---	1	33.3	0	---	0	---

TABLE 6A (CONTINUED)

	SEXUAL ASSAULT (EXCEPT RAPE)		OTHER SEX OFFENSES		ASSAULT WITH DANGEROUS WEAPONS		ASSAULT-NOT CLASSIFIED ELSEWHERE		WEAPONS OFFENSES	
	NUMBER	PERCENT	NUMBER	PERCENT	NUMBER	PERCENT	NUMBER	PERCENT	NUMBER	PERCENT
ALL INMATES	7	1.0	10	1.5	33	4.8	10	1.5	14	2.0
Sentenced	6	1.0	9	1.5	28	4.8	7	1.2	13	2.2
Awaiting Trial	1	1.0	1	1.0	5	5.1	3	3.1	1	1.0
ALL MALES	7	1.0	10	1.5	33	4.9	9	1.3	13	1.9
Sentenced	6	1.0	9	1.6	28	4.9	6	1.0	13	2.3
Maximum	2	0.6	3	0.9	19	5.7	4	1.2	8	2.4
Medium	3	2.2	4	3.0	2	1.5	2	1.5	3	2.2
Minimum	1	1.3	2	2.6	7	9.0	0	---	2	2.6
Work Release	0	---	0	---	0	---	0	---	0	---
Awaiting Trial	1	1.1	1	1.1	5	5.3	3	3.2	0	---
Maximum	0	---	0	---	3	4.5	3	4.5	0	---
Medium	1	3.4	1	3.4	2	6.9	0	---	0	---
ALL FEMALES	0	---	0	---	0	---	1	6.7	1	6.7
Sentenced	0	---	0	---	0	---	1	8.3	0	---
Awaiting Trial	0	---	0	---	0	---	0	---	1	33.3

TABLE 6A (CONTINUED)

	<u>CRIMES AGAINST PROPERTY</u>		<u>BREAKING AND ENTERING</u>		<u>STOLEN MOTOR VEHICLE</u>		<u>LARCENY FROM PERSON</u>	
	NUMBER	PERCENT	NUMBER	PERCENT	NUMBER	PERCENT	NUMBER	PERCENT
ALL INMATES	176	25.7	115	16.8	20	2.9	13	1.9
Sentenced	140	23.9	94	16.0	16	2.7	13	2.2
Awaiting Trial	36	36.7	21	21.4	4	4.1	0	---
ALL MALES	175	26.2	115	17.2	20	3.0	13	1.9
Sentenced	139	24.2	94	16.4	16	2.8	13	2.3
Maximum	90	27.1	66	19.9	9	2.7	9	2.7
Medium	36	26.6	20	14.8	6	4.4	3	2.2
Minimum	12	15.4	7	9.0	1	1.3	1	1.3
Work Release	1	3.4	1	3.4	0	---	0	---
Awaiting Trial	36	37.9	21	22.1	4	4.2	0	---
Maximum	26	39.4	15	22.7	2	3.0	0	---
Medium	10	34.4	6	20.7	2	6.9	0	---
ALL FEMALES	1	6.7	0	---	0	---	0	---
Sentenced	1	8.3	0	---	0	---	0	---
Awaiting Trial	0	---	0	---	0	---	0	---

CONTINUED

1 OF 3

TABLE 6A (CONTINUED)

	<u>LARCENY</u> (<u>NOT MOTOR VEHICLE</u>)		<u>RECEIVE</u> <u>STOLEN GOODS</u>		<u>FORGING</u> <u>UTTERING, ETC.</u>		<u>ARSON</u> <u>STATUTORY</u> <u>BURNING</u>	
	NUMBER	PERCENT	NUMBER	PERCENT	NUMBER	PERCENT	NUMBER	PERCENT
ALL INMATES	11	1.7	8	1.2	8	1.2	4	0.6
Sentenced	7	1.2	8	1.4	5	0.9	2	0.3
Awaiting Trial	4	4.1	0	---	3	3.1	2	2.0
ALL MALES	11	1.6	8	1.2	8	1.2	4	0.6
Sentenced	7	1.2	8	1.4	5	0.9	2	0.3
Maximum	4	1.2	5	1.5	2	0.6	1	0.3
Medium	2	1.5	2	1.5	2	1.5	1	0.7
Minimum	1	1.3	1	1.3	1	1.3	0	---
Work Release	0	---	0	---	0	---	0	---
Awaiting Trial	4	4.2	0	---	3	3.2	2	2.1
Maximum	4	6.1	0	---	2	3.0	1	1.5
Medium	0	---	0	---	1	3.4	1	3.4
ALL FEMALES	0	---	0	---	0	---	0	---
Sentenced	0	---	0	---	0	---	0	---
Awaiting Trial	0	---	0	---	0	---	0	---

TABLE 6A (CONTINUED)

	OTHER PROPERTY CRIMES		DRUG OFFENSES		VIOLATORS OF PROBATION OR PAROLE		OTHER OFFENSES	
	NUMBER	PERCENT	NUMBER	PERCENT	NUMBER	PERCENT	NUMBER	PERCENT
ALL INMATES	10	1.5	46	6.7	35	5.1	10	1.5
Sentenced	8	1.4	41	7.0	35	6.0	6	1.0
Awaiting Trial	2	2.0	5	5.1	0	---	4	4.1
ALL MALES	9	1.3	43	6.4	35	5.2	9	1.3
Sentenced	7	1.2	38	6.6	35	6.1	6	1.0
Maximum	3	0.9	19	5.7	17	5.1	5	1.5
Medium	3	2.2	4	3.0	15	11.1	1	0.7
Minimum	1	1.3	12	15.4	3	3.8	0	---
Work Release	0	---	3	10.3	0	---	0	---
Awaiting Trial	2	2.1	5	5.3	0	---	3	3.2
Maximum	2	3.0	4	6.1	0	---	3	4.5
Medium	0	---	1	3.4	0	---	0	---
ALL FEMALES	1	6.7	3	20.0	0	---	1	6.7
Sentenced	1	8.3	3	25.0	0	---	0	---
Awaiting Trial	0	---	0	---	0	---	1	33.3

TABLE 7

MALE SENTENCED POPULATION
AT THE ADULT CORRECTIONAL INSTITUTION
ACCORDING TO CHARGE AND SECURITY CLASSIFICATION
SEPTEMBER 1, 1977 - APRIL 1, 1980

<u>CRIME</u>	<u>MAXIMUM</u>		<u>CLASSIFICATION</u>		<u>(PERCENTAGE DISTRIBUTION)</u>		<u>WORK RELEASE</u>		<u>DRUG UNIT</u>	
	<u>1977</u>	<u>1980</u>	<u>1977</u>	<u>1980</u>	<u>1977</u>	<u>1980</u>	<u>1977</u>	<u>1980</u>	<u>1977</u>	<u>1980</u>
ALL OFFENSES	57.8	44.8	23.5	27.2	13.6	17.0	5.1	9.2	*	1.7
Crimes against person	56.5	43.8	22.2	27.8	14.3	18.0	7.0	9.0	*	1.5
Murder	52.6	50.6	14.1	17.7	16.7	19.0	16.7	12.7	*	0.0
Manslaughter	57.1	35.7	7.1	42.9	21.4	0.0	14.3	21.4	*	0.0
Assault with intent to murder	70.6	56.3	17.7	25.0	5.9	12.5	5.9	6.3	*	0.0
Kidnapping	55.6	50.0	11.1	10.0	11.1	30.0	22.2	10.0	*	0.0
Robbery	56.6	42.8	27.9	32.2	10.9	15.8	4.7	5.9	*	3.3
Assault with intent to rob	40.0	57.1	20.0	28.6	30.0	14.3	10.0	0.0	*	0.0
Rape	54.2	36.8	33.3	36.8	12.5	21.1	0.0	5.3	*	0.0
Sexual Assault (other than rape)	33.3	50.0	50.0	35.7	16.7	14.3	0.0	0.0	*	0.0
Other sex offenses	33.3	33.3	44.4	11.1	22.2	33.3	0.0	22.2	*	0.0
Assault with dangerous weapon	67.9	40.0	7.1	32.0	25.0	8.0	0.0	16.0	*	4.0

*The Drug Unit did not exist in 1977.

TABLE 7 (CONTINUED)

CRIME	MAXIMUM		CLASSIFICATION		(PERCENTAGE DISTRIBUTION)				DRUG UNIT	
			MEDIUM		MINIMUM		WORK RELEASE			
	1977	1980	1977	1980	1977	1980	1977	1980	1977	1980
Assault - not elsewhere classified	66.7	40.0	33.3	20.0	0.0	40.0	0.0	0.0	*	0.0
Weapons offenses	61.5	62.5	23.1	0.0	15.4	25.0	0.0	12.5	*	0.0
Larceny from person	69.2	21.4	23.1	35.7	7.7	35.7	0.0	7.1	*	0.0
Crimes against property	64.7	45.7	25.9	26.9	8.6	16.0	0.7	10.3	*	1.1
Breaking and entering or burglary	70.2	48.1	21.3	26.7	7.4	16.0	1.1	8.4	*	0.8
Stolen motor vehicle	56.3	57.1	37.5	0.0	6.3	42.9	0.0	0.0	*	0.0
Larceny (non motor vehicle)	57.1	40.0	28.6	60.0	14.3	0.0	0.0	0.0	*	0.0
Receive stolen goods	62.5	40.0	25.0	20.0	12.5	20.0	0.0	10.0	*	10.0
Forging, Uttering, etc.	40.0	25.0	40.0	50.0	20.0	0.0	0.0	25.0	*	0.0
Arson/statutory burning	50.0	38.5	50.0	23.1	0.0	15.4	0.0	23.1	*	0.0
Other property crimes	42.9	20.0	42.9	40.0	14.3	0.0	0.0	40.0	*	0.0
Drug offenses	50.0	42.9	10.5	25.0	31.6	14.3	7.9	10.7	*	7.1
Violation of probation or parole	48.6	56.3	42.9	25.0	8.6	12.5	0.0	0.0	*	6.3
Other offenses	83.3	60.0	16.7	20.0	0.0	10.0	0.0	10.0	*	0.0

TABLE 8

TEN LEADING OFFENSES OF SENTENCED INMATES

AT THE ADULT CORRECTIONAL INSTITUTION

SEPTEMBER 1, 1977 - APRIL 1, 1980

<u>APRIL 1, 1980</u>				<u>SEPTEMBER 1, 1977</u>		
<u>1980 RANK</u>	<u>OFFENSE</u>	<u>NUMBER OF CASES</u>	<u>PERCENTAGE</u>	<u>1977 RANK</u>	<u>NUMBER OF CASES</u>	<u>PERCENTAGE</u>
-	All offenses	639	100.0	-	586	100.0
1	Robbery	157	24.6	1	132	22.5
2	Breaking & entering or burglary	131	20.5	2	94	16.0
3	Murder	83	13.0	3	81	13.8
4	Rape	38	5.9	7	24	4.1
5	Drug offenses	28	4.4	4	41	7.0
6	Assault with dangerous weapon	25	3.9	6	28	4.8
7	Non-assaultive sex offenses	18	2.8	-	9	1.5
8/9	Violation of probation or parole	16	2.5	5	35	6.0
8/9	Assault with intent to kill	16	2.5	8	17	2.9
10/12	Manslaughter	14	2.2	10*	15	2.6
10/12	Sexual assault, other than rape	14	2.2	-	6	1.0
10/12	Larceny from person	14	2.2	11/12	13	2.2

*Stolen motor vehicle ranked ninth in 1977.
Weapons offenses also ranked 11/12 in 1977.

TABLE 9

SECURITY CLASSIFICATION OF INMATES
AT THE ADULT CORRECTIONAL INSTITUTION
ACCORDING TO LENGTH OF SENTENCE
APRIL 1, 1980

<u>LENGTH OF SENTENCE</u>	<u>ALL INMATES</u>		<u>MAXIMUM</u>		<u>MEDIUM</u>	
	NUMBER	PERCENT	NUMBER	PERCENT	NUMBER	PERCENT
ALL INMATES	639	100.0	282	100.0	171	100.0
Less than six months	12	1.9	4	1.4	4	2.3
6.0 - 17.9 months	66	10.3	20	7.1	27	15.8
18 months	30	4.7	14	5.0	10	5.8
19 - 29 months	61	9.5	32	11.3	7	4.1
2.5 - 3.4 years	101	15.8	41	14.5	27	15.8
3.5 - 4.4 years	32	5.0	13	4.6	6	3.5
4.5 - 5.4 years	64	10.0	28	9.9	19	11.1
5.5 - 7.4 years	53	8.3	25	8.9	10	5.8
7.5 - 9.4 years	27	4.2	14	5.0	7	4.1
9.5 -10.4 years	38	5.9	14	5.0	14	8.2
10.5 -14.5 years	23	3.6	10	3.5	8	4.7
14.5 -15.4 years	19	3.0	8	2.8	6	3.5
15.5 -19.4 years	8	1.3	2	0.7	3	1.8
19.5 -20.5 years	22	3.4	10	3.5	5	2.9
21 - 27 years	23	3.6	13	4.6	7	4.1
30 yrs. or over except life	20	3.1	8	2.8	6	3.5
Life	40	6.3	26	9.2	5	2.9
Death**	--	---	---	---	--	---
Median Sentence (years)		4.8		5.1		4.7
Mean Sentence (years)*		10.0		11.5		8.9

* In calculating the mean length of sentence, life and death sentences were tabulated as 50 years.

**The death penalty law had been struck down by the State Supreme Court by the time the 1980 census survey was accomplished.

TABLE 9 (CONTINUED)

<u>LENGTH OF SENTENCE</u>	<u>MINIMUM</u>		<u>WORK RELEASE</u>		<u>DRUG UNIT</u>		<u>WOMEN'S DIVISION</u>	
	NUMBER	PERCENT	NUMBER	PERCENT	NUMBER	PERCENT	NUMBER	PERCENT
ALL INMATES	107	100.0	58	100.0	11	100.0	10	100.0
Less than six months	2	1.9	1	1.7	0	-----	1	10.0
6.0 - 17.9 months	15	14.0	4	6.9	0	-----	0	-----
18 months	1	0.9	5	8.6	0	-----	0	-----
19 - 29 months	13	12.1	8	13.8	1	9.1	0	-----
2.5 - 3.4 years	21	19.6	10	17.2	1	9.1	1	10.0
3.5 - 4.4 years	5	4.7	5	8.6	2	18.2	1	10.0
4.5 - 5.4 years	6	5.6	6	10.3	3	27.3	2	20.0
5.5 - 7.4 years	11	10.3	3	5.2	3	27.3	1	10.0
7.5 - 9.4 years	6	5.6	0	---	0	-----	0	-----
9.5 -10.4 years	7	6.5	3	5.2	0	-----	0	-----
10.5 -14.5 years	2	1.9	2	3.4	1	9.1	0	-----
14.5 -15.4 years	2	1.9	3	5.2	0	-----	0	-----
15.5 -19.4 years	1	0.9	0	---	0	-----	2	20.0
19.5 -20.5 years	5	4.7	2	3.4	0	-----	0	-----
21 - 27 years	2	1.9	1	1.7	0	-----	0	-----
30 years or over except life	2	1.9	3	5.2	0	-----	1	10.0
Life	6	5.6	2	3.4	0	-----	1	10.0
Death**	-	---	-	---	-	-----	-	-----
Median sentence (years)		3.8		3.7		5.0		12.5
Mean sentence (years)		8.8		8.5		5.3		14.1

* In calculating the mean length of sentence, life and death sentences were tabulated as 50 years.

**The death penalty law had been struck down by the State Supreme Court by the time the 1980 census survey was accomplished.

TABLE 9A

SECURITY CLASSIFICATION OF INMATES
AT THE ADULT CORRECTIONAL INSTITUTION
ACCORDING TO LENGTH OF SENTENCE
SEPTEMBER 1, 1977

<u>LENGTH OF SENTENCE</u>	<u>ALL INMATES</u>		<u>MAXIMUM</u>		<u>MEDIUM</u>	
	NUMBER	PERCENT	NUMBER	PERCENT	NUMBER	PERCENT
ALL INMATES	586	100.0	332	100.0	135	100.0
Less than six months	19	3.2	11	3.3	6	4.4
6.0 17.9 months	44	7.5	22	6.6	8	5.9
18 months	21	3.6	11	3.3	6	4.4
19 - 29 months	63	10.8	34	10.2	21	15.6
2.5 - 3.4 years	114	19.5	67	20.2	28	20.7
3.5 - 4.4 years	29	4.9	20	6.0	6	4.4
4.5 - 5.4 years	53	9.0	29	8.7	13	9.6
5.5 - 7.4 years	44	7.5	26	7.8	11	8.1
7.5 - 9.4 years	25	4.3	16	4.8	4	3.0
9.5 -10.4 years	43	7.3	24	7.2	9	6.7
10.5 -14.5 years	18	3.1	10	3.0	4	3.0
14.5 -15.4 years	23	3.9	12	3.6	5	3.7
15.5 -19.4 years	7	1.2	3	0.9	1	0.7
19.5 -20.5 years	18	3.1	10	3.0	4	3.0
21 27 years	16	2.7	6	1.8	2	1.5
30 yrs. or over except life	16	2.7	8	2.4	4	3.0
Life	31	5.3	21	6.3	3	2.2
Death**	2	0.3	2	0.6	0	---
Median Sentence (years)		4.6		4.5		3.4
Mean Sentence (years)*		9.7		10.0		7.5

* In calculating the mean length of sentence, life and death sentences were tabulated as 50 years.

**The death penalty law had been struck down by the State Supreme Court by the time the 1980 census survey was accomplished.

TABLE 9A (CONTINUED)

<u>LENGTH OF SENTENCE</u>	<u>MINIMUM</u>		<u>WORK RELEASE</u>		<u>WOMEN'S DIVISION</u>	
	NUMBER	PERCENT	NUMBER	PERCENT	NUMBER	PERCENT
ALL INMATES	78	100.0	29	100.0	12	100.0
Less than six months	1	1.3	0	-----	1	8.3
6.0 - 17.9 months	12	15.4	1	3.4	1	8.3
18 months	4	5.1	0	-----	0	---
19 - 29 months	5	6.4	1	3.4	2	16.7
2.5 - 3.4 years	12	15.4	4	13.8	3	25.0
3.5 - 4.4 years	2	2.6	1	3.4	0	----
4.5 - 5.4 years	9	11.5	1	3.4	1	8.3
5.5 - 7.4 years	5	6.4	2	6.9	0	---
7.5 - 9.4 years	5	6.4	0	---	0	---
9.5 -10.4 years	4	5.1	5	17.2	1	8.3
10.5 -14.5 years	3	3.8	1	3.4	0	---
14.5 -15.4 years	5	6.4	1	3.4	0	---
15.5 -19.4 years	0	----	1	3.4	2	16.7
19.5 -20.5 years	2	2.6	2	6.9	0	----
21 - 27 years	3	3.8	5	17.2	0	----
30 yrs. or over except life	1	1.3	2	6.9	1	8.3
Life	5	6.4	2	6.9	0	---
Death**	0	----	0	----	0	----
Median Sentence (years)	4.8		10.4		3.2	
Mean Sentence (years)*	9.6		16.1		7.9	

* In calculating the mean length of sentence, life and death sentences were tabulated as 50 years.

** The Death penalty law had been struck down by the State Supreme Court by the time the 1980 census survey was accomplished.

TABLE 10

PERCENTAGE DISTRIBUTION OF THE MALE SENTENCED POPULATION

ACCORDING TO CLASSIFICATION AND LENGTH OF SENTENCE

SEPTEMBER 1, 1977 - APRIL 1, 1980

LENGTH OF SENTENCE	MAXIMUM		MEDIUM		MINIMUM		WORK RELEASE		DRUG UNIT	
	1977	1980	1977	1980	1977	1980	1977	1980	1977	1980
ALL SENTENCES	57.8	44.8	23.5	27.2	13.6	17.0	5.1	9.2	*	1.7
Less than										
six months	61.1	36.4	33.3	36.4	5.6	18.2	0.0	9.1	*	0.0
6.0 - 17.9 months	51.2	30.3	18.6	40.9	27.9	22.7	2.3	6.1	*	0.0
18 months	52.4	46.6	28.6	33.3	19.0	3.3	0.0	16.7	*	0.0
19 - 29 months	55.7	52.5	34.4	11.5	8.2	21.3	1.6	13.1	*	1.6
2.5 - 3.4 years	60.4	41.0	25.2	27.0	10.8	21.0	3.6	10.0	*	1.0
3.5 - 4.4 years	69.0	41.9	20.7	19.4	6.9	16.1	3.4	16.1	*	6.5
4.5 - 5.4 years	55.8	45.2	25.0	30.6	17.3	9.7	1.9	9.7	*	4.8
5.5 - 7.4 years	59.1	48.1	25.0	19.2	11.4	21.2	4.5	5.8	*	5.8
7.5 - 9.4 years	64.0	51.9	16.0	25.9	20.0	22.2	0.0	0.0	*	0.0
9.5 - 10.4 years	57.1	36.8	21.4	36.8	9.5	18.4	11.9	7.9	*	0.0
10.5 - 14.5 years	55.6	43.5	22.2	34.8	16.7	8.7	5.6	8.7	*	4.3
14.5 - 15.4 years	52.2	42.1	21.7	31.6	21.7	10.5	4.3	15.8	*	0.0
15.5 - 19.4 years	60.0	33.3	20.0	50.0	0.0	16.7	20.0	0.0	*	0.0
19.5 - 20.5 years	55.6	45.5	22.2	22.7	11.1	22.7	11.1	9.1	*	0.0
21 - 27 years	37.5	56.5	12.5	30.4	18.8	8.7	31.3	4.3	*	0.0
30 years or over										
except life	53.3	42.1	26.7	31.6	6.7	10.5	13.3	15.8	*	0.0
Life	67.7	66.7	9.7	12.8	16.1	15.4	6.5	3.1	*	0.0
Death	100.0	#	0.0	#	0.0	#	0.0	#	*	0.0

*The Drug Unit did not exist in 1977.

#The death penalty was abolished in 1979.

TABLE 11

DISTRIBUTION OF SENTENCED POPULATION

ACCORDING TO LENGTH OF SENTENCE

SEPTEMBER 1, 1977 - APRIL 1, 1980

	SEPTEMBER 1, 1977		APRIL 1, 1980		PERCENTAGE CHANGES	
	NUMBER	PERCENT	NUMBER	PERCENT	IN NUMBER	IN PERCENT
ALL INMATES	586	100.0	639	100.0	+ 9.0	-----
Less than six months	19	3.2	12	1.9	-36.8	-40.6
6.0 - 17.9 months	44	7.5	66	10.3	+50.0	+37.3
18 months	21	3.6	30	4.7	+42.9	+30.6
19 - 29 months	63	10.8	61	9.5	- 3.2	-12.0
2.5 - 3.4 years	114	19.5	101	15.8	-11.4	-19.0
3.5 - 4.4 years	29	4.9	32	5.0	+10.3	+ 2.0
4.5 - 5.4 years	53	9.0	64	10.0	+20.8	+11.1
5.5 - 7.4 years	44	7.5	53	8.3	+20.5	+10.7
7.5 - 9.4 years	25	4.3	27	4.2	+ 8.0	- 2.3
9.5 -10.4 years	43	7.3	38	5.9	-11.6	-19.2
10.5 -14.5 years	18	3.1	23	3.6	+27.8	+16.1
14.5 -15.4 years	23	3.9	19	3.0	-17.4	-23.1
15.5 -19.4 years	7	1.2	8	1.3	+14.3	+ 8.3
19.5 -20.5 years	18	3.1	22	3.4	+22.2	+ 9.7
21 - 27 years	16	2.7	23	3.6	+43.8	+33.3
30 yrs. or over except life	16	2.7	20	3.1	+25.0	+14.8
Life	31	5.3	40	6.3	+29.0	+18.9
Death**	2	0.3	0	---	- 100	- 100
Median Sentence (years)	4.6		4.8		+4.3	
Mean Sentence (years)	9.7		10.0		+3.1	

* In calculating the mean length of sentence, life and death sentences were tabulated as 50 years.

**The death penalty law had been struck down by the State Supreme Court by the time the 1980 census survey was accomplished.

TABLE 12

CLASSIFICATION OF THE ACI POPULATION
 ACCORDING TO JUVENILE TRAINING SCHOOL EXPERIENCE
 SEPTEMBER 1, 1977 - APRIL 1, 1980

	NUMBER OF INMATES		NUMBER WITH TRAINING SCHOOL EXPERIENCE		PERCENTAGE WITH TRAINING SCHOOL EXPERIENCE	
	1977	1980	1977	1980	1977	1980
ALL INMATES	684	767				
Sentenced	586	639	274	313	40.1	40.8
Awaiting Trial	98	128	247	269	42.2	42.1
			27	44	27.6	34.4
ALL MALES	669	747				
Sentenced	574	629	270	308	40.4	41.2
Maximum	332	282	245	268	42.7	42.6
Medium	135	171	136	141	41.0	50.0
Minimum	78	107	70	69	51.9	40.4
Work Release	29	58	30	39	38.5	36.4
Drug Unit*	--	11	9	15	31.0	25.9
Awaiting Trial	95	118	-	4	----	36.4
			25	40	26.3	33.9
ALL FEMALES	15	20				
Sentenced	12	10	4	5	26.7	25.0
Awaiting Trial	3	10	2	1	16.7	10.0
			2	4	66.7#	40.0

*The Drug Unit did not exist on September 1, 1977.

#This percentage is not statistically significant.

TABLE 13

CLASSIFICATION OF THE ACI POPULATION
ACCORDING TO PREVIOUS ADULT SENTENCES

SEPTEMBER 1, 1977 - APRIL 1, 1980

	NUMBER OF INMATES		NUMBER WITH PRIOR ADULT SENTENCES ^A		PERCENTAGE WITH PRIOR ADULT SENTENCES	
	1977	1980	1977	1980	1977	1980
ALL INMATES	684	767	315	316	46.1	41.2
Sentenced	586	639	300	286	51.2	44.8
Awaiting Trial	98	128	15	30	15.3	23.4
ALL MALES	669	747	310	316	46.3	42.3
Sentenced	574	629	295	286	51.4	45.5
Maximum	332	282	184	147	55.4	52.1
Medium	135	171	71	74	52.6	43.3
Minimum	78	107	35	40	44.9	37.4
Work Release	29	58	5	18	17.2	31.0
Drug Unit*	--	11	--	7	--	63.6
Awaiting Trial	95	118	15	30	15.8	25.4
ALL FEMALES	15	20	5	0	33.3	0.0
Sentenced	12	10	5	0	41.7	0.0
Awaiting Trial	3	10	0	0	0.0 [#]	0.0

A) Only prior jail or prison sentences of 90 days or longer were considered in this table.

* The Drug Unit did not exist in 1977.

This percentage is not statistically significant.

TABLE 14

Classification of the ACI Population
According to City and Town of Residence
April 1, 1980

	<u>TOTAL</u>	<u>BARRINGTON</u>	<u>BRISTOL</u>	<u>BURRILLVILLE</u>	<u>CENTRAL FALLS</u>
All Inmates	767	1	12	1	22
Sentenced	639	1	9	1	18
Awaiting Trial	128	0	3	0	4
All Males	747	1	12	1	21
Sentenced	629	1	9	1	17
Maximum	282	0	4	0	6
Medium	171	1	4	0	6
Minimum	107	0	1	0	0
Work Release	58	0	0	1	2
Drug Unit	11	0	0	0	0
Awaiting Trial	118	0	3	0	4
All Females	20	0	0	0	1
Sentenced	10	0	0	0	1
Awaiting Trial	10	0	0	0	0

TABLE 14 (continued)

	<u>CHARLESTOWN</u>	<u>COVENTRY</u>	<u>CRANSTON</u>	<u>CUMBERLAND</u>	<u>EAST GREENWICH</u>
All Inmates	0	10	34	6	3
Sentenced	0	9	30	6	3
Awaiting Trial	0	1	4	0	0
All Males	0	10	31	6	3
Sentenced	0	9	29	6	3
Maximum	0	2	11	1	2
Medium	0	1	11	1	0
Minimum	0	3	4	1	0
Work Release	0	3	3	3	1
Drug Unit	0	0	0	0	0
Awaiting Trial	0	1	3	0	0
All Females	0	0	2	0	0
Sentenced	0	0	1	0	0
Awaiting Trial	0	0	1	0	0

TABLE 14 (continued)

	<u>EAST PROVIDENCE</u>	<u>EXETER</u>	<u>FOSTER</u>	<u>GLOCESTER</u>	<u>HOPKINTON</u>	<u>JAMESTOWN</u>
All Inmates	20	0	2	0	2	4
Sentenced	18	0	2	0	1	4
Awaiting Trial	2	0	0	0	1	0
All Males	20	0	2	0	2	4
Sentenced	18	0	2	0	1	4
Maximum	5	0	2	0	0	2
Medium	5	0	0	0	1	1
Minimum	6	0	0	0	0	0
Work Release	2	0	0	0	0	1
Drug Unit	0	0	0	0	0	0
Awaiting Trial	2	0	0	0	1	0
All Females	0	0	0	0	0	0
Sentenced	0	0	0	0	0	0
Awaiting Trial	0	0	0	0	0	0

TABLE 14 (continued)

	<u>JOHNSTON</u>	<u>LINCOLN</u>	<u>LITTLE COMPTON</u>	<u>MIDDLETOWN</u>	<u>NARRAGANSETT</u>
All Inmates	12	4	1	4	3
Sentenced	9	4	1	4	1
Awaiting Trial	3	0	0	0	2
All Males	12	4	1	4	2
Sentenced	9	4	1	4	1
Maximum	3	1	0	1	0
Medium	4	0	0	2	0
Minimum	1	1	0	1	0
Work Release	1	2	1	0	1
Drug Unit	0	0	0	0	0
Awaiting Trial	3	0	0	0	1
All Females	0	0	0	0	1
Sentenced	0	0	0	0	0
Awaiting Trial	0	0	0	0	1

TABLE 14 (continued)

	<u>NEWPORT</u>	<u>NEW SHOREHAM</u>	<u>NORTH KINGSTOWN</u>	<u>NORTH PROVIDENCE</u>	<u>NORTH SMITHFIELD</u>	<u>PAWTUCKET</u>
All Inmates	17	0	2	23	2	51
Sentenced	12	0	1	18	1	39
Awaiting Trial	5	0	1	5	1	12
All Males	16	0	2	23	2	50
Sentenced	11	0	1	18	1	39
Maximum	5	0	0	8	0	19
Medium	2	0	0	8	0	10
Minimum	2	0	0	2	1	7
Work Release	2	0	0	0	0	3
Drug Unit	0	0	1	0	0	0
Awaiting Trial	5	0	1	5	1	11
All Females	1	0	0	0	0	1
Sentenced	1	0	0	0	0	0
Awaiting Trial	0	0	0	0	0	1

TABLE 14 (continued)

	<u>PORTSMOUTH</u>	<u>PROVIDENCE</u>	<u>RICHMOND</u>	<u>SCITUATE</u>	<u>SMITHFIELD</u>
All Inmates	1	348	1	0	0
Sentenced	0	293	1	0	0
Awaiting Trial	1	55	0	0	0
All Males	1	339	1	0	0
Sentenced	0	290	1	0	0
Maximum	0	141	0	0	0
Medium	0	69	1	0	0
Minimum	0	55	0	0	0
Work Release	0	20	0	0	0
Drug Unit	0	5	0	0	0
Awaiting Trial	1	49	0	0	0
All Females	0	9	0	0	0
Sentenced	0	3	0	0	0
Awaiting Trial	0	6	0	0	0

TABLE 14 (continued)

	<u>SOUTH KINGSTOWN</u>	<u>TIVERTON</u>	<u>WARREN</u>	<u>WARWICK</u>	<u>WESTERLY</u>	<u>WEST GREENWICH</u>
All Inmates	3	2	3	59	6	1
Sentenced	2	1	2	58	5	1
Awaiting Trial	1	1	1	1	1	0
All Males	3	2	3	58	6	1
Sentenced	2	1	2	57	5	1
Maximum	1	0	0	21	3	1
Medium	1	1	2	19	2	0
Minimum	0	0	0	10	0	0
Work Release	0	0	0	5	0	0
Drug Unit	0	0	0	2	0	0
Awaiting Trial	1	1	1	1	1	0
All Females	0	0	0	1	0	0
Sentenced	0	0	0	1	0	0
Awaiting Trial	0	0	0	1	0	0
		0	0	0	0	0

TABLE 14 (continued)

	<u>WEST WARWICK</u>	<u>WOONSOCKET</u>	<u>UNKNOWN</u>
All Inmates	11	44	2
Sentenced	11	35	1
Awaiting Trial	0	9	1
All Males	11	41	2
Sentenced	11	32	1
Maximum	7	12	1
Medium	1	5	0
Minimum	1	9	0
Work Release	2	3	0
Drug Unit	0	3	0
Awaiting Trial	0	9	1
All Females	0	3	0
Sentenced	0	3	0
Awaiting Trial	0	0	0

TABLE 14 (continued)

	<u>OUT OF STATE (TOTAL)</u>	<u>CALIFORNIA</u>	<u>CONNECTICUT</u>	<u>FLORIDA</u>	<u>GEORGIA</u>	<u>MAIN</u>
All Inmates	50	1	2	1	1	1
Sentenced	37	1	2	1	0	0
Awaiting Trial	13	0	0	0	1	1
All Males	49	1	2	1	1	0
Sentenced	37	1	2	1	0	0
Maximum	20	1	1	1	0	0
Medium	13	0	1	0	0	0
Minimum	2	0	0	0	0	0
Work Release	2	0	0	0	0	0
Drug Unit	0	0	0	0	0	0
Awaiting Trial	12	0	0	0	1	0
All Females	1	0	0	0	0	1
Sentenced	0	0	0	0	0	0
Awaiting Trial	1	0	0	0	0	1

TABLE 14 (continued)

	<u>MASSACHUSETTS</u>	<u>NEW HAMPSHIRE</u>	<u>NEW JERSEY</u>	<u>NEW YORK</u>	<u>PENNSYLVANIA</u>
All Inmates	30	1	2	6	1
Sentenced	23	1	1	5	1
Awaiting Trial	7	0	1	1	0
All Males	30	1	2	6	1
Sentenced	23	1	1	5	1
Maximum	12	1	0	4	0
Medium	9	0	0	1	0
Minimum	0	0	1	0	1
Work Release	2	0	0	0	0
Drug Unit	0	0	0	0	0
Awaiting Trial	7	0	1	1	0
All Females	0	0	0	0	0
Sentenced	0	0	0	0	0
Awaiting Trial	0	0	0	0	0

TABLE 14 (continued)

	<u>VERMONT</u>	<u>VIRGINIA</u>	<u>WASHINGTON</u> (State)
All Inmates	1	2	1
Sentenced	1	0	1
Awaiting Trial	0	2	0
All Males	1	2	1
Sentenced	1	0	1
Maximum	0	0	0
Medium	1	0	1
Minimum	0	0	0
Work Release	0	0	0
Drug Unit	0	0	0
Awaiting Trial	0	2	0
All Females	0	0	0
Sentenced	0	0	0
Awaiting Trial	0	0	0

TABLE 15

SENTENCED POPULATION OF THE ADULT CORRECTIONAL INSTITUTION
 ACCORDING TO SECURITY CLASSIFICATION AND EDUCATION - APRIL 1, 1980

	<u>All Inmates Sentenced</u>	<u>Males Sentenced</u>	<u>Maximum</u>	<u>Medium</u>	<u>Minimum</u>	<u>Work Release</u>	<u>Drug Unit</u>	<u>Females Sentenced</u>
TOTAL	639	629	282	171	107	58	11	10
Mentally Retarded or Ungraded	16	16	8	5	3	0	0	0
Grades 0 - 3	5	5	2	2	1	0	0	0
Grade 4	3	3	1	1	1	0	0	0
Grade 5	17	17	13	3	1	0	0	0
Grade 6	18	17	8	4	4	1	0	1
Grade 7	36	33	17	6	8	2	0	3
Grade 8	120	118	52	29	26	10	0	2
Grade 9	112	111	53	28	21	8	0	1
Grade 10	102	101	42	32	15	8	0	1
Grade 11	40	39	14	15	7	3	0	1
Grade 12 or GED	142*	141	62	38	17	19	0	1
1 - 3 Yrs. College	22	22	9	7	3	3	0	0
4 Yrs. or More College	6	6	1	1	0	4	0	0
MEDIAN EDUCATION	9.9	10.0	9.8	10.2	9.5	11.0	10.9	8.5

*Of these 142 inmates, 79 had received GED's (38 at the ACI, 10 at out-of-state prisons and 31 from other sources).

TABLE 16

INMATES OF THE RHODE ISLAND ADULT CORRECTIONAL INSTITUTION
ACCORDING TO RACE AND AGE - APRIL 1, 1980

ALL INMATES

Age Group	All Races	White		Black		Hispanic*		Other Races	
		Number	Percent	Number	Percent	Number	Percent	Number	Percent
TOTAL	767	540	70.4	201	26.2	25	3.3	1	0.1
17 - 20	120	85	70.8	33	27.5	2	1.7	0	--
21 - 22	120	85	70.8	32	26.7	3	2.5	0	--
23 - 24	122	68	55.7	50	41.0	4	3.3	0	--
25 - 29	193	141	73.1	47	24.4	5	2.6	0	--
30 - 34	91	67	73.6	16	17.6	8	8.8	0	--
35 - 39	49	35	71.4	11	22.4	2	4.1	1	2.0
40 - 49	47	37	78.7	9	19.1	1	2.1	0	--
50 & older	25	22	88.0	3	12.0	0	--	0	--
MEDIAN	25.6	26.1		24.4		28.5			

*Hispanics could be either white or black.

TABLE 16 (Continued)

SENTENCED POPULATION

<u>Age Group</u>	<u>All Races</u>	<u>White</u>		<u>Black</u>		<u>Hispanic</u>		<u>Other Races</u>	
		<u>Number</u>	<u>Percent</u>	<u>Number</u>	<u>Percent</u>	<u>Number</u>	<u>Percent</u>	<u>Number</u>	<u>Percent</u>
TOTAL	639	466	72.9	154	24.1	18	2.8	1	0.2
17 - 20	81	63	77.8	17	21.0	1	1.2	0	--
21 - 22	103	75	72.8	26	25.2	2	1.9	0	--
23 - 24	106	58	54.7	44	41.5	4	3.8	0	--
25 - 29	162	121	74.7	37	22.8	4	2.5	0	--
30 - 34	78	61	78.2	12	15.4	5	6.4	0	--
35 - 39	45	34	75.6	8	17.8	2	4.4	1	2.2
40 - 49	41	34	82.9	7	17.1	0	--	0	--
50 & older	23	20	87.0	3	13.0	0	--	0	--
MEDIAN	25.9	26.5		24.5		27.5			

AWAITING TRIAL POPULATION

TOTAL	128	74	57.8	47	36.7	7	5.5	0	--
17 - 20	39	22	56.4	16	41.0	1	2.6	0	--
21 - 22	17	10	58.8	6	35.3	1	5.9	0	--
23 - 24	16	10	62.5	6	37.5	0	--	0	--
25 - 29	31	20	64.5	10	32.3	1	3.2	0	--
30 - 34	13	6	46.1	4	30.8	3	23.1	0	--
35 - 39	4	1	25.0	3	75.0	0	--	0	--
40 - 49	6	3	50.0	2	33.3	1	16.7	0	--
50 & older	2	2	100.0	0	--	0	--	0	--
MEDIAN	24.0	24.0		23.5		30.8			

TABLE 17

SENTENCED INMATES OF THE RHODE ISLAND ADULT CORRECTIONAL INSTITUTION
 ACCORDING TO LENGTH OF SENTENCE AND RACE
 April 1, 1980

Length of Sentence	TOTAL	White		Black		Spanish Surname		Other Races	
		Number	Percent	Number	Percent	Number	Percent	Number	Percent
ALL SENTENCES	639	466	72.9	154	24.1	18	2.8	1	0.2
Less than 6 Months	12	9	75.0	3	25.0	0	0.0	0	0.0
6 - 16 Months	66	49	74.2	16	24.2	1	1.5	0	0.0
18 Months	30	23	76.7	6	20.0	1	3.3	0	0.0
1.6 - 2.4 Years	61	42	68.9	18	29.5	1	1.6	0	0.0
2.5 - 3.4 Years	101	76	75.2	23	22.8	2	2.0	0	0.0
3.5 - 4.4 Years	32	25	78.1	7	21.9	0	0.0	0	0.0
4.5 - 5.4 Years	64	46	71.9	17	26.6	1	1.6	0	0.0
5.5 - 7.4 Years	53	31	58.5	19	35.8	3	5.7	0	0.0
7.5 - 9.4 Years	27	16	59.3	6	22.2	5	18.5	0	0.0
9.5 - 10.4 Years	38	30	78.9	6	15.8	1	2.6	1	2.6
10.5 - 14.4 Years	23	15	65.2	8	34.8	0	0.0	0	0.0
14.5 - 15.4 Years	19	16	84.2	3	15.8	0	0.0	0	0.0
15.5 - 19.4 Years	8	7	87.5	1	12.5	0	0.0	0	0.0
19.5 - 20.4 Years	22	16	72.7	6	27.3	0	0.0	0	0.0
21 - 27 Years	23	17	73.9	6	26.1	0	0.0	0	0.0
30 Years or Over, except Life	20	19	95.0	1	5.0	0	0.0	0	0.0
Life	40	29	72.5	8	20.0	3	7.5	0	0.0
MEDIAN SENTENCE (Years)	4.8	4.7		4.7		7.0		---	

TABLE 18

INMATES AT THE RHODE ISLAND ADULT CORRECTIONAL INSTITUTION ACCORDING TO RACE AND CHARGE

April 1, 1980

	ALL RACES		WHITE		BLACK		SPANISH SURNAME		OTHER RACES	
	Sent.	A/T	Sent.	A/T	Sent.	A/T	Sent.	A/T	Sent.	A/T
ALL OFFENSES	639	128	466	74	154	47	18	7	1	0
Crimes Against Person	410	66	294	35	99	29	16	2	1	0
Murder	83	4	70	2	10	2	3	0	0	0
Manslaughter	14	0	9	0	2	0	2	0	1	0
Assault w/Intent to Murder	16	7	12	4	4	2	0	1	0	0
Kidnapping	10	1	5	0	1	1	4	0	0	0
Robbery	157	30	104	16	49	13	4	1	0	0
Assault w/Intent to Rob	7	2	4	1	3	1	0	0	0	0
Rape	38	3	26	1	11	2	1	0	0	0
Sexual Assault (except rape)	14	3	12	2	2	1	0	0	0	0
Other Sex Offenses	18	7	17	3	0	4	1	0	0	0
Assault w/Dangerous Weapon	25	4	19	3	6	1	0	0	0	0
Assault/Not Else- where Class.	6	4	5	3	1	1	0	0	0	0
Weapons Offenses	8	0	5	0	3	0	0	0	0	0
Larceny from Person	14	1	6	0	7	1	1	0	0	0

TABLE 18 (Continued)

	ALL RACES		WHITE		BLACK		SPANISH SURNAME		OTHER RACES	
	Sent.	A/T	Sent.	A/T	Sent.	A/T	Sent.	A/T	Sent.	A/T
Crimes Against Property	175	49	130	31	44	15	1	3	0	0
Breaking & Entering,	131	28	90	20	40	7	1	1	0	0
Burglary										
Stolen Motor Vehicle	7	7	5	4	2	3	0	0	0	0
Larceny (not motor	5	1	5	0	0	1	0	0	0	0
vehicle)										
Receive Stolen Goods	10	4	10	1	0	3	0	0	0	0
(not motor vehicle)										
Forging, Uttering, etc.	4	4	3	2	1	1	0	1	0	0
Arson/Statutory	13	2	12	2	1	0	0	0	0	0
Burning										
Other Property Crimes	5	3	5	2	0	0	0	1	0	0
Other Offenses	54	13	42	8	11	3	1	2	0	0
Drug Offenses	28	3	24	2	3	1	1	0	0	0
Violations of	16	2	9	1	7	0	0	1	0	0
Probation/Parole										
Other Offenses	10	8	9	5	1	2	0	1	0	0

TABLE 19

RECIDIVISM STATUS OF INMATES AT THE RHODE ISLAND ADULT CORRECTIONAL INSTITUTION
ACCORDING TO RACE AND SECURITY CLASSIFICATION - APRIL 1, 1980

CLASSIFICATION	No Prior Adult Sentence					One or More Prior Adult Sentences*				
	TOTAL	WHITE	BLACK	SPANISH	OTHER	TOTAL	WHITE	BLACK	SPANISH	OTHER
ALL INMATES	451	320	111	19	1	316	220	90	6	0
Sentenced	353	266	72	14	1	286	200	82	4	0
Awaiting Trial	98	54	39	5	0	30	20	8	2	0
All Males	431	309	103	18	1	316	220	90	6	0
Sentenced	343	260	69	13	1	286	200	82	4	0
Maximum	135	100	27	7	1	147	98	47	2	0
Medium	97	76	17	4	0	74	53	19	2	0
Minimum	67	46	20	1	0	40	30	10	0	0
Work Release	40	35	4	1	0	18	12	6	0	0
Drug Unit	4	3	1	0	0	7	7	0	0	0
Awaiting Trial	88	49	34	5	0	30	20	8	2	0
All Females	20	11	8	1	0	0	0	0	0	0
Sentenced	10	6	3	1	0	0	0	0	0	0
Awaiting Trial	10	5	5	0	0	0	0	0	0	0

*Only prior incarcerations resulting from sentences of 90 days or longer are considered. Prior incarcerations under awaiting trial status or under sentences of less than 90 days are not considered.

TABLE 20

RECIDIVISM STATUS OF INMATES AT THE RHODE ISLAND ADULT CORRECTIONAL INSTITUTION
ACCORDING TO CHARGE AND SENTENCED OR AWAITING TRIAL STATUS - APRIL 1, 1980

Category	TOTAL		AT LEAST ONE PREVIOUS ADULT SENTENCE*		NO PREVIOUS SENTENCE	
	Sentenced	Awaiting Trial	Sentenced	Awaiting Trial	Sentenced	Awaiting Trial
ALL OFFENSES	639	128	286	30	353	98
Murder	83	4	30	3	53	1
Manslaughter	14	0	5	0	9	0
Assault w/Intent to Murder	16	7	8	3	8	4
Kidnapping'	10	1	2	0	8	1
Robbery	157	30	74	4	83	26
Assault w/Intent to Rob	7	2	2	0	5	2
Rape	38	3	18	0	20	3
Sexual Assault(except Rape)	14	3	5	1	9	2
Other Sex Offenses	18	7	5	1	13	6
Assault w/Dangerous Weapon	25	4	15	3	10	1
Assault-NotElsewhereClassified	6	4	3	0	3	4
Weapons Offenses	8	0	6	0	2	0
Larceny from Person	14	1	4	0	10	1
Breaking & Entering, Burglary	131	28	62	6	69	22
Stolen Motor Vehicles	7	7	5	2	2	5
Larceny (Not Motor Vehicles)	5	1	2	1	3	0
Rec.StolenGoods(NotMotorVehicles)	10	4	4	0	6	4
Forging, Uttering, etc.	4	4	1	0	3	4
Arson/Statutory Burning	13	2	4	1	9	1
Other Crimes Against Property	5	3	0	1	5	2
Drug Offenses	28	3	14	0	14	3
Violations of Prob.& Parole	16	2	15	2	1	0
Other Offenses	10	8	2	2	8	6

*Only incarcerations resulting from sentences of 90 days or longer are considered.

TABLE 21

RECIDIVISM STATUS OF INMATES AT THE RHODE ISLAND ADULT CORRECTIONAL INSTITUTION
ACCORDING TO MARITAL STATUS - APRIL 1, 1980

	<u>Total</u>	<u>Previous Adult Sentence*</u>		<u>No Previous Sentence</u>	
		<u>Number</u>	<u>Percent</u>	<u>Number</u>	<u>Percent</u>
ALL INMATES	767	316	41.2	451	58.8
Never Married	472	173	36.7	299	63.3
Married	141	64	45.4	77	54.6
Common Law Marriage	15	11	73.3	4	26.7
Separated	40	16	40.0	24	60.0
Divorced	87	50	57.5	37	42.5
Widowed	12	2	16.7	10	83.3
SENTENCED INMATES ONLY	639	286	44.8	353	55.2
Never Married	394	158	40.1	236	59.9
Married	115	55	47.8	60	52.2
Common Law Marriage	14	10	71.4	4	28.6
Separated	31	13	41.9	18	58.1
Divorced	74	48	64.9	26	35.1
Widowed	11	2	18.2	9	81.8
AWAITING TRIAL INMATES ONLY	128	30	23.4	98	76.6
Never Married	78	15	19.2	63	80.8
Married	26	9	34.6	17	65.4
Common Law Marriage	1	1	--	0	--
Separated	9	3	33.3	6	66.7
Divorced	13	2	15.4	11	84.6
Widowed	1	0	--	1	--

*Only previous sentences of 90 days or longer are considered.

TABLE 22

RECIDIVISM STATUS OF THE SENTENCED POPULATION
 ACCORDING TO EDUCATION AT ADMISSION - APRIL 1, 1980

EDUCATIONAL ATTAINMENT	TOTAL	PRIOR ADULT SENTENCE		NO PREVIOUS SENTENCE	
		Number	Percent	Number	Percent
ALL INMATES	639	286	44.8	353	55.2
Mentally Retarded or Ungraded	16	6	37.5	10	62.5
0 - 3 Grade	5	3	60.0	2	40.0
4th Grade	3	3	100.0	0	0.0
5th Grade	17	11	64.7	6	35.3
6th Grade	18	12	66.7	6	33.3
7th Grade	36	18	50.0	18	50.0
8th Grade	120	60	50.0	60	50.0
9th Grade	112	49	43.8	63	56.3
10th Grade	102	30	29.4	72	70.6
11th Grade	40	8	20.0	32	80.0
12th Grade	142	77*	54.2	65 [#]	45.8
1 - 3 Years College	22	9	40.9	13	59.1
4 Years College or More	6	0	0.0	6	100.0
MEDIAN EDUCATION	9.9	9.6		10.2	

#Of these 65 persons, 22 received GED's and 43 graduated from high school.

*Of these 77 recidivists with a 12th grade education, 38 had received their GED at the ACI, 10 received their GED at an out-of-state prison, 9 received their GED from other sources, and 20 graduated from high school.

TABLE 23

INMATES AT THE RHODE ISLAND ADULT CORRECTIONAL INSTITUTION
ACCORDING TO LENGTH OF SENTENCE AND RECIDIVISM STATUS

April 1, 1980

Length of Sentence	Total	PRIOR ADULT SENTENCE*		NO PRIOR ADULT SENTENCE	
		Number	Percent	Number	Percent
ALL SENTENCES	639	286	44.8	353	55.2
Less Than Six Months	12	1	8.3	11	91.7
6 - 16 Months	66	19	28.8	47	71.2
18 Months	30	7	23.3	23	76.7
1.6 - 2.4 Years	61	28	45.9	33	54.1
2.5 - 3.4 Years	101	47	46.5	54	53.5
3.5 - 4.4 Years	32	18	56.3	14	43.8
4.5 - 5.4 Years	64	31	48.4	33	51.6
5.5 - 7.4 Years	53	26	49.1	27	50.9
7.5 - 9.4 Years	27	14	51.9	13	48.1
9.5 - 10.4 Years	38	18	47.4	20	52.6
10.5 - 14.4 Years	23	11	47.8	12	52.2
14.5 - 15.4 Years	19	11	57.9	8	42.1
15.5 - 19.4 Years	8	5	62.5	3	37.5
19.5 - 20.4 Years	22	13	59.1	9	40.9
21 - 27 Years	23	7	30.4	16	69.6
30 Years or Over, Except Life	20	12	60.0	8	40.0
Life	40	18	45.0	22	55.0
MEDIAN SENTENCE	4.8	5.2		4.1	

*Only prior imprisonments resulting from sentences of 90 days or longer are considered.
Prior imprisonments resulting from sentences of less than 90 days or imprisonments under
awaiting trial status are not considered.

TABLE 24

RESIDENTS OF THE RHODE ISLAND ADULT CORRECTIONAL INSTITUTION
 ACCORDING TO PRIOR RESIDENCE AT THE RHODE ISLAND TRAINING SCHOOL AND ADULT RECIDIVISM STATUS

April 1, 1980

<u>Training School Experience</u>	<u>Total</u>	<u>Prior*</u>		<u>No Prior</u>	
		<u>Adult Incarceration</u>	<u>Number Percent</u>	<u>Adult Incarceration</u>	<u>Number Percent</u>
ALL INMATES	767	316	41.2	451	58.8
<u>Sentenced</u>	639	286	44.8	353	55.2
<u>Awaiting Trial</u>	128	30	23.4	98	76.6
Former Training School Residents	313	171	54.6	142	45.4
<u>Sentenced</u>	269	156	58.0	113	42.0
<u>Awaiting Trial</u>	44	15	34.1	29	65.9
Not Former Training School Residents	454	145	31.9	309	68.1
<u>Sentenced</u>	370	130	35.1	240	64.9
<u>Awaiting Trial</u>	84	15	17.9	69	82.1
Percent Former Training School Residents	40.8	54.1		31.5	
<u>Sentenced</u>	42.1	54.5		32.0	
<u>Awaiting Trial</u>	34.4	50.0		29.6	

*Only prior incarcerations resulting from sentences of 90 days or longer are considered in this table. Prior incarcerations under awaiting trial status or under sentences of less than 90 days are not considered.

TABLE 25

RESIDENTS OF THE RHODE ISLAND ADULT CORRECTIONAL INSTITUTION
ACCORDING TO AGE AND PRIOR RESIDENCY AT THE TRAINING SCHOOL

April 1, 1980

Age	Total	SENTENCED POPULATION		AWAITING TRIAL POPULATION	
		Training School Experience	No Training School Experience	Training School Experience	No Training School Experience
ALL AGES	767	269	370	44	84
17 - 20	120	46	35	19	20
21 - 22	120	49	54	5	12
23 - 24	122	44	62	7	9
25 - 29	193	72	90	9	22
30 - 34	91	22	56	3	10
35 - 39	49	14	31	1	3
40 - 49	47	17	24	0	6
50 or Older	25	5	18	0	2
MEDIAN AGE	25.6	24.8	26.9	22.2	25.2

TABLE 26

RESIDENTS AT THE RHODE ISLAND ADULT CORRECTIONAL INSTITUTION
ACCORDING TO RACE AND PRIOR RESIDENCY AT THE TRAINING SCHOOL

April 1, 1980

<u>Race</u>	<u>Status</u>	<u>Total</u>	<u>Training School Experience</u>	<u>No Training School Experience</u>	<u>Percent With Training School Experience</u>
ALL RACES		767	313	454	40.8
	Sentenced	639	269	370	42.1
	Awaiting Trial	128	44	84	34.4
White		540	202	338	37.4
	Sentenced	466	178	288	38.2
	Awaiting Trial	74	24	50	32.4
Black		201	108	93	53.7
	Sentenced	154	88	66	57.1
	Awaiting Trial	47	20	27	42.6
Spanish Surname		25	3	22	12.0
	Sentenced	18	3	15	16.7
	Awaiting Trial	7	0	7	0.0
Other Races		1	0	1	0.0
	Sentenced	1	0	1	0.0
	Awaiting Trial	0	0	0	0.0

TABLE 27

INMATES AT THE RHODE ISLAND ADULT CORRECTIONAL INSTITUTION
ACCORDING TO CHARGE AND PRIOR RESIDENCE AT THE RHODE ISLAND TRAINING SCHOOL

April 1, 1980

Category	SENTENCED POPULATION			AWAITING TRIAL POPULATION		
	Total	Former Training School Residents		Total	Former Training School Residents	
		Number	Percent		Number	Percent
ALL OFFENSES	639	269	42.1	128	44	34.4
Murder	83	28	33.7	4	2	50.0
Manslaughter	14	4	28.6	0	0	--
Assault w/Intent to Murder	16	5	31.3	7	3	42.9
Kidnapping	10	5	50.0	1	0	--
Robbery	157	79	50.3	30	13	43.3
Assault w/Intent to Rob	7	3	42.9	2	1	--
Rape	38	12	31.6	3	0	--
Sexual Assault (except Rape)	14	4	28.6	3	0	--
Other Sex Offenses	18	2	11.1	7	4	57.1
Assault w/Dangerous Weapon	25	9	36.0	4	2	50.0
Assault--Not Elsewhere Classified	6	5	83.3	4	1	25.0
Weapons Offenses	8	6	75.0	0	0	--
Larceny from Person	14	7	50.0	1	0	--
Breaking & Entering, Burglary	131	68	51.9	28	10	35.7
Stolen Motor Vehicle	7	5	71.4	7	3	42.9
Larceny (Not Motor Vehicle)	5	0	0.0	1	1	--
Receiving Stolen Goods(NotMotorVehicle)	10	4	40.0	4	0	--
Forging, Uttering, etc.	4	0	0.0	4	1	25.0
Arson or Statutory Burning	13	3	23.1	2	0	--
Other Crimes Against Property	5	0	0.0	3		--
Drug Offenses	28	9	32.1	3	0	--
Violations of Probation/Parole	16	9	56.3	2	1	--
Other Offenses	10	2	20.0	8	2	25.0

TABLE 28

SENTENCED INMATES OF THE RHODE ISLAND ADULT CORRECTIONAL INSTITUTION
 ACCORDING TO LENGTH OF SENTENCE AND AGE - April 1, 1980

LENGTH OF SENTENCE	.TOTAL	AGE GROUP								MEDIAN AGE
		.17-20	.21-22	.23-24	.25-29	.30-34	.35-39	.40-49	50 or Older	
ALL SENTENCES	639	81	103	106	162	78	45	41	23	25.9
Less Than Six Months	12	3	3	0	1	1	2	0	2	25.5
6 - 16 Months	66	22	14	8	10	5	3	4	0	22.6
18 Months	30	10	5	6	7	2	0	0	0	23.0
1.6 - 2.4 Years	61	8	13	18	13	4	2	1	2	23.1
2.5 - 3.4 Years	101	13	21	19	22	13	7	4	2	23.7
3.5 - 4.4 Years	32	1	10	11	8	1	1	0	0	23.9
4.5 - 5.4 Years	64	8	11	8	20	8	1	4	4	26.3
5.5 - 7.4 Years	53	6	11	9	17	6	2	2	0	25.1
7.5 - 9.4 Years	27	2	3	5	10	5	1	0	1	26.8
9.5 - 10.4 Years	38	3	3	8	11	3	7	2	1	27.3
10.5 - 14.4 Years	23	3	0	7	7	3	1	2	0	26.1
14.5 - 15.4 Years	19	0	3	0	6	4	4	1	1	30.6
15.5 - 19.4 Years	8	0	0	2	2	2	1	0	1	30.0
19.5 - 20-4 Years	22	0	2	3	5	3	4	5	0	31.7
21 - 27 Years	23	2	3	0	6	5	1	3	3	30.5
30 Years Or Over Except Life	20	0	1	0	4	6	4	3	2	34.2
Life	40	0	0	2	13	7	4	10	4	33.6
MEDIAN SENTENCE	4.8	2.2	3.3	3.7	5.5	7.2	10.0	19.6	10.0	

TABLE 29

INMATES AT THE RHODE ISLAND ADULT CORRECTIONAL INSTITUTION
ACCORDING TO CHARGE AND LENGTH OF SENTENCE - APRIL 1, 1980

Charge	Length of Sentence	Frequency	Charge	Length of Sentence	Frequency
MURDER	TOTAL	83	ASSAULT W/ INTENT TO MURDER	TOTAL	16
	*6 Years	1		3 Years	1
	10 Years	5		4 Years	1
	12 Years	1		5 Years	2
	14 Years	1		7.5 - 8.0 Years	2
	15 Years	4		10 Years	1
	18.0 - 18.3 Years	2		12 Years	3
	20.0 - 20.3 Years	10		15 Years	3
	21 Years	3		20 Years	2
	25 Years	7		45 Years	1
	27 Years	1	MEDIAN SENTENCE(Yrs.) 12.0		
	30 Years	3	KIDNAPPING	TOTAL	10
	32 - 35 Years	4		4 Years	1
	40 Years	1		5 Years	1
	50 Years	3		7 Years	1
	74 Years	1		9.0 - 9.3 Years	4
	Life	36		25 Years	2
				Life	1
			MEDIAN SENTENCE(Yrs.) 9.0		
			MANSLAUGHTER	TOTAL	14
				5 Years	3
				7 Years	1
				10 Years	2
				12 Years	1
				15 Years	3
				20 Years	3
				30 Years	1
*Conspiracy to Murder	MEDIAN SENTENCE(Yrs.)	35.0			

TABLE 29 (Continued)

Charge	Length of Sentence	Frequency
ROBBERY	TOTAL	157
	1 Year	2
	18 Months	4
	2 Years	3
	2.5 - 3.1 Years	23
	3.5 - 4.1 Years	12
	4.6 - 5.3 Years	26
	5.5 - 6.1 Years	20
	6.6 - 7.3 Years	19
	8 Years	7
	9.1 - 9.3 Years	3
	10 Years	14
	10.5 - 13.5 Years	7
	15.0 - 15.3 Years	4
	17.1 - 19.6 Years	6
	20 Years	2
	21 - 22 Years	2
	25 Years	1
	36 Years	1
	Life	1
MEDIAN SENTENCE(Yrs.)		6.0

Charge	Length of Sentence	Frequency
ASSAULT W/INTENT TO ROB	TOTAL	7
	1 Year	1
	2 Years	2
	2.5 Years	1
	5 Years	2
	30 Years	1
MEDIAN SENTENCE(Yrs.)		2.5

Charge	Length of Sentence	Frequency
RAPE	TOTAL	38
	4 Years	2
	5 Years	1
	6 Years	1
	8 Years	2
	9 Years	1
	10.0 - 10.3 Years	6
	11 Years	1
	12.0 - 12.3 Years	7
	14 Years	1
	15 Years	4
	20 Years	3
	21.1 - 22.2 Years	3
	25 Years	2
	30 Years	1
	35 Years	1
	42 Years	1
	Life	1
MEDIAN SENTENCE(Yrs.)		12.0

TABLE 29 (Continued)

<u>Charge</u>	<u>Length of Sentence</u>	<u>Frequency</u>
SEXUAL ASSAULT (other than rape)	TOTAL	14
Indecent Assault Upon Child	3 Months	1
Indecent Assault	1 Year	1
Sexual Assault - Second Degree	1 Year	1
Assault w/Intent to Rape	1.5 Years	1
Assault w/Intent to Rape	2 Years	1
Sexual Assault - Second Degree	2 Years	1
Indecent Assault	3 Years	1
Sexual Assault - Second Degree	5 Years	1
Assault w/Intent to Rape	5 Years	2
Indecent Assault Upon Child	5 Years	1
Indecent Assault Upon Child	7 Years	1
Assault w/Intent to Rape	10 Years	1
Assault w/Intent to Rape	12 Years	1
MEDIAN SENTENCE (Years)	4.0	
OTHER SEX OFFENSES	TOTAL	18
Abominable & Detestable Crime Against Nature	2 Years	3
Abominable & Detestable Crime Against Nature	2.3 Years	1
Abominable & Detestable Crime Against Nature	3 Years	3
Carnal Knowledge	3 Years	1
Incest	3 Years	1
Transportation for Immoral Purposes	3 Years	1
Abominable & Detestable Crime Against Nature	4 Years	1
Abominable & Detestable Crime Against Nature	5 Years	2
Incest	5 Years	1
Incest	7 Years	1
Carnal Knowledge	7 Years	1
Incest	10 Years	1
Abominable & Detestable Crime Against Nature	10 Years	1
MEDIAN SENTENCE (Years)	3.0	

TABLE 29 (Continued)

<u>Charge</u>	<u>Length of Sentence</u>	<u>Frequency</u>
ASSAULT w/DANGEROUS WEAPON (Not Elsewhere Classified)	TOTAL	25
	1 Year	5
	1.5 Years	2
	2 Years	3
	3.0 - 3.1 Years	6
	4 Years	1
	5 Years	4
	6 Years	1
	8 Years	1
	10.0 - 10.1 Years	2

MEDIAN SENTENCE (YEARS)

3.0

ASSAULT (Not Elsewhere Classified)	TOTAL	6
Simple Assault	3 Months	1
Simple Assault	1 Year	1
Assault on Inmate (ACI)	1 Year	1
Assault upon Police Officer	1 Year	1
Assault on Inmate (ACI)	2 Years	1
Assault on Inmate (ACI)	3 Years	1

MEDIAN SENTENCE (Years)

1.0

ILLEGAL POSSESSION OR USE OF WEAPONS	TOTAL	8
Possession Pistol w/o License	8 Months	1
Possession Pistol w/o License	1 Year	1
Possession of Firearm After Crime of Violence	1 Year	1
Possession of Firearm After Crime of Violence	2 Years	3
Possession of Pistol w/o License	3 Years	1
Possession of Firearm After Crime of Violence	3.8 Years	1

MEDIAN SENTENCE (Years)

2.0

TABLE 29 (Continued)

Charge	Length of Sentence	Frequency	Charge	Length of Sentence	Frequency
LARCENY FROM PERSON	TOTAL	14	STOLEN MOTOR VEHICLE	TOTAL	7
	1 Year	6		10.5 Months	1
	1.5 Years	3		1 Year	1
	3 Years	3		2 Years	2
	5.1 Years	1		3.0 - 3.1 Years	2
	10 Years	1		5 Years	1
	MEDIAN SENTENCE(Yrs.)	1.5		MEDIAN SENTENCE(Yrs.)	2.0
BREAKING & ENTERING, ENTERING A DWELLING, OR BURGLARY	TOTAL	131	LARCENY(not MotorVehicle)	TOTAL	5
	30 - 60 Days	2	Larceny	30 Days	2
	3 - 4 Months	3	Larceny	1 Year	1
	7 Months	1	Larceny over \$500.	1.5 Years	1
	1.0 - 1.3 Years	25	Conspiracy to Commit Larceny	5 Years	1
	1.5 Years	14		MEDIAN SENTENCE(Yrs.)	1.0
	1.6 - 1.7 Years	2			
	2 Years	19			
	2.5 Years	3			
	3.0 - 3.1 Years	36			
	3.5 - 4.0 Years	9			
	5 Years	11			
	8 Years	3			
	10 Years	1			
	15 Years	1			
	17 Years	1			
	MEDIAN SENTENCE(Yrs.)	2.0			

TABLE 29 (Continued)

Charge	Length of Sentence	Frequency	Charge	Length of Sentence	Frequency
RECEIVING STOLEN GOODS (Not Motor Vehicles)	TOTAL	10	FORGING, UTTERING OR PUBLISHING	TOTAL	4
	9 Months	1		1 Year	1
	1 Year	3		2 Years	1
	1.5 Years	1		5 Years	1
	2 Years	4		7.5 Years	1
	3 Years	1			
	MEDIAN SENTENCE(Yrs.)	1.8		MEDIAN SENTENCE(Yrs.)	3.5

ARSON OR STATUTORY BURNING	TOTAL	13
	1.5 Years	1
	2 Years	7
	2.5 Years	1
	3 Years	1
	4 Years	1
	7 Years	1
	10 Years	1
	MEDIAN SENTENCE(Yrs.)	2.0

OTHER CRIMES AGAINST PROPERTY	TOTAL	5
	Violating Banking Laws	1 Year
	Obtaining Money/False Pretenses	2.5 Years
	Obtaining Money/False Pretenses	3 Years
	Embezzlement	5 Years
	MEDIAN SENTENCE(Yrs.)	3.0

TABLE 29 (Continued)

<u>Charge</u>	<u>Length of Sentence</u>	<u>Frequency</u>
<u>DRUG OFFENSES</u>	<u>TOTAL</u>	<u>28</u>
	9 Months	1
	1 Year	5
	1.5 Years	3
	2 Years	7
	3.0 - 3.1 Years	4
	4 Years	2
	5 Years	1
	6 Years	2
	8 Years	1
	10 Years	1
	20.2 Years	1

MEDIAN SENTENCE (Years)

2.0

VIOLATORS OF PAROLE OR OF SUSPENDED OR DEFERRED
SENTENCES (Listed by Original Charge)

	<u>TOTAL</u>	<u>16</u>
Violation of Suspended Sentence	9 Months	1
Breaking and Entering	2.3 Years	1
Breaking and Entering	3 Years	1
Robbery	3 Years	2
Carry Weapon	3 Years	1
Breaking and Entering	3.2 Years	1
Robbery	6.1 Years	1
Robbery	7 Years	2
Robbery	8 Years	1
Kidnapping	8 Years	1
Sale of Narcotics	22 Years	1
Murder	25 Years	1
Robbery	35 Years	1
Murder	Life	1

MEDIAN SENTENCE (Years)

6.6

TABLE 29 (Continued)

<u>Charge</u>	<u>Length of Sentence</u>	<u>Frequency</u>
OTHER OFFENSES	TOTAL	19
Reckless Driving	14 Days	1
Driving Under Influence Alcohol	30 Days	1
Shellfishing in Polluted Water	30 Days	1
Driving Under Influence Alcohol	1 Year	1
Leaving Scene of Accident--Death Resulting	1 Year	1
Extortion	3 Years	1
Conspiracy	3 Years	1
Conspiracy	4 Years	1
Extortion	10 Years	1
MEDIAN SENTENCE (Years)	2.0	

CONTINUED

2 OF 3

TABLE 30

INMATES AT THE RHODE ISLAND ADULT CORRECTIONAL INSTITUTIONS
ACCORDING TO CITY OR TOWN AND CENSUS TRACT OF RESIDENCE

April 1, 1980

City or Town and Census Tract	Number of Inmates	Sentenced	Awaiting Trial
BARRINGTON	1	1	0
302	1	1	0
BRISTOL	12	9	3
307	5	5	0
309.01	3	2	1
309.02	4	2	2
BURRILLVILLE	1	1	0
130	1	1	0
CENTRAL FALLS	22	18	4
108	3	2	1
109	7	7	0
110	4	2	2
111	8	7	1
CHARLESTOWN	0	0	0
COVENTRY	10	9	1
206.01	2	2	0
206.02	2	2	0
206.03	5	4	1
207	1	1	0
CRANSTON	34	30	4
134	1	1	0
135	9	8	1
136	1	1	0
137.01	1	0	1
137.02	3	2	1
139	1	1	0
140	6	6	0
141	1	1	0
144	2	2	0
145	1	1	0
147	6	5	1
148	2	2	0

TABLE 30 (Continued)

City or Town and Census Tract	Number of Inmates	Sentenced	Awaiting Trial
CUMBERLAND	6	6	0
112	4	4	0
114.03	2	2	0
EAST GREENWICH	3	3	0
209.01	2	2	0
209.02	1	1	0
EAST PROVIDENCE	20	18	2
101.01	1	0	1
102	7	7	0
103	2	2	0
104	1	1	0
105.01	1	1	0
105.02	5	5	0
106	3	2	1
EXETER	0	0	0
FOSTER (133)	2	2	0
GLOCESTER	0	0	0
HOPKINTON (507)	2	1	1
JAMESTOWN (413)	4	4	0
JOHNSTON	12	9	3
122	1	1	0
123	3	2	1
124.01	5	4	1
124.02	1	1	0
125	2	1	1
LINCOLN	4	4	0
115	2	2	0
116	2	2	0
LITTLE COMPTON (414)	1	1	0

TABLE 30 (Continued)

City or Town and Census Tract	Number of Inmates	Sentenced	Awaiting Trial
MIDDLETOWN	4	4	0
403.01	2	2	0
403.02	2	2	0
NARRAGANSETT (515)	3	1	2
NEWPORT	17	12	5
405	10	8	2
406	2	1	1
407	1	1	0
409	1	0	1
410	3	2	1
NEW SHOREHAM	0	0	0
NORTH KINGSTOWN	2	2	1
501.01	2	2	1
NORTH PROVIDENCE	23	18	5
118	3	3	0
119	6	4	2
120	11	8	3
121.01	3	3	0
NORTH SMITHFIELD	2	1	1
128.01	1	0	1
128.02	1	1	0
PAWTUCKET	51	39	12
150	4	4	0
151	6	3	3
152	1	1	0
153	3	3	0
154	3	2	1
155	3	2	1
157	2	2	0
158	1	1	0
159	1	1	0
160	1	0	1
161	9	6	3
164	7	7	0
166	1	1	0
167	1	1	0
168	1	1	0
169	1	1	0
171	6	3	3

City or Town and Census Tract	Number of Inmates	Sentenced	Awaiting Trial
PORTSMOUTH	1	0	1
401.01	1	0	1
PROVIDENCE	348	293	55
001	18	16	2
002	26	21	5
003	11	10	1
004	31	26	5
005	23	16	7
006	12	9	3
007	14	9	5
009	10	10	0
010	4	4	0
011	13	10	3
012	10	8	2
013	14	14	0
014	17	16	1
015	2	2	0
016	11	11	0
017	5	4	1
018	15	14	1
019	11	8	3
020	6	5	1
021	7	7	0
022	9	5	4
023	2	2	0
024	1	1	0
025	7	7	0
026	10	7	3
027	12	11	1
028	4	4	0
029	8	8	0
031	14	12	2
032	10	6	4
033	3	2	1
035	3	3	0
036	1	1	0
037	4	4	0
RICHMOND (506)	1	1	0
SCITUATE	0	0	0
SMITHFIELD	0	0	0

TABLE 30 (Continued)

City or Town and Census Tract	Number of Inmates	Sentenced	Awaiting Trial
SOUTH KINGSTOWN	3	2	1
512	2	2	0
513	1	0	1
TIVERTON	2	1	1
416.02	1	0	1
417	1	1	0
WARREN	3	2	1
305	1	1	0
306.01	1	0	1
306.02	1	1	0
WARWICK	59	58	1
210	1	1	0
211	3	3	0
212	1	1	0
213	4	4	0
214.01	3	3	0
214.02	1	1	0
215.01	5	4	1
215.02	5	5	0
217	15	15	0
218	1	1	0
219.01	2	2	0
219.02	6	6	0
219.03	1	1	0
220	2	2	0
221	3	3	0
223	4	4	0
224	2	2	0
WESTERLY	6	5	1
508.01	3	2	1
509	2	2	0
510	1	1	0
WEST GREENWICH (208)	1	1	0
WEST WARWICK	11	11	0
201	1	1	0
202	4	4	0
203	2	2	0
204	4	4	0

TABLE 30 (Continued)

City or Town and Census Tract	Number of Inmates	Sentenced	Awaiting Trial
WOONSOCKET	44	35	9
172	3	2	1
173	1	1	0
174	3	3	0
175	1	0	1
176	12	9	3
178	6	5	1
179	2	2	0
180	4	3	1
181	3	3	0
182	3	2	1
183	3	3	0
184	3	2	1
UNKNOWN OR NO PERMANENT RESIDENCE	2	1	1
OUT-OF-STATE RESIDENTS	50	37	13
California	1	1	0
Connecticut	2	2	0
Florida	1	1	0
Georgia	1	0	1
Maine	1	0	1
Massachusetts	30	23	7
New Hampshire	1	1	0
New Jersey	2	1	1
New York	6	5	1
Pennsylvania	1	1	0
Vermont	1	1	0
Virginia	2	0	2
Washington (State)	1	1	0

TABLE 31

TIME ACTUALLY SERVED BY SENTENCED INMATES RELEASED BY PAROLE OR EXPIRATION OF SENTENCE
DURING CALENDAR YEAR 1979
(Includes only inmates sentenced to more than one year)

Length of Sentence	Total	TIME ACTUALLY SERVED (MONTHS)										
		6.0 to 11.9	12 to 17.9	18.0 to 23.9	24 to 29.9	30.0 to 35.9	36.0 to 41.9	42.0 to 47.9	48.0 to 59.9	60 to 71.9	72 to 83.9	84+ Mos.
TOTAL	207	18	45	47	22	21	8	17	17	9	2	1
12.2 - 15.0 Months	7	6	1	0	0	0	0	0	0	0	0	0
18.0 - 19.5 Months	18	6	12	0	0	0	0	0	0	0	0	0
24.0 - 25.0 Months	51	5	20	26	0	0	0	0	0	0	0	0
27 - 30 Months	8	1	3	3	1	0	0	0	0	0	0	0
36 - 41 Months	45	0	9	9	15	12	0	0	0	0	0	0
48 - 52 Months	9	0	0	3	2	1	3	0	0	0	0	0
60 - 64 Months	27	0	0	5	3	4	3	7	5	0	0	0
6 Years	10	0	0	1	0	1	0	5	3	0	0	0
7 Years	3	0	0	0	1	1	0	0	1	0	0	0
8 Years	8	0	0	0	0	2	1	3	2	0	0	0
9 Years	2	0	0	0	0	0	0	1	1	0	0	0
10 Years	14	0	0	0	0	0	1	1	4	7	1	0
12 Years	1	0	0	0	0	0	0	0	1	0	0	0
15 Years	3	0	0	0	0	0	0	0	0	2	1	0
25 Years	1	0	0	0	0	0	0	0	0	0	0	1

TABLE 31 (Continued)

<u>Length of Sentence</u>	<u>Median Time Served (Months)</u>	<u>Mean Time Served (Months)</u>	<u>Mean Percentage Of Time Served</u>	<u>Percentage Served By:</u>	
				<u>Parolees</u>	<u>Those Whose Sentence Expired</u>
TOTAL	23.1	28.5	57.8	49.1	75.4
12.2 - 15 Months	10.8	9.6	72.3	54.1	85.6
18.0 - 19.5 Months	13.8	12.8	70.4	52.8	84.4
24.0 - 25.0	18.1	17.1	71.1	58.1	84.5
27 - 30 Months	18.0	18.2	62.4	56.4	81.3
36 - 41 Months	24.9	24.8	68.2	54.4	84.0
42 - 52 Months	26.8	29.5	60.6	55.0	80.1
60 - 64 Months	40.8	37.3	61.7	53.0	76.5
6 Years	44.3	42.9	59.6	54.7	71.0
7 Years	31.9	38.7	46.1	36.4	65.4
8 Years	42.3	44.4	46.2	39.5	59.1
9 Years	49.2	49.2	45.1	45.1	--
10 Years	61.8	59.6	49.4	45.1	57.3
12 Years	57.6	57.6	40.0	40.0	--
15 Years	67.8	69.7	38.8	38.8	--
25 Years	102.3	102.3	34.1	34.1	--

END