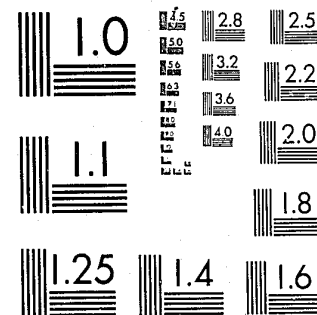


National Criminal Justice Reference Service

**ncjrs**

This microfiche was produced from documents received for inclusion in the NCJRS data base. Since NCJRS cannot exercise control over the physical condition of the documents submitted, the individual frame quality will vary. The resolution chart on this frame may be used to evaluate the document quality.



MICROCOPY RESOLUTION TEST CHART  
NATIONAL BUREAU OF STANDARDS-1963-A

Microfilming procedures used to create this fiche comply with the standards set forth in 41CFR 101-11.504.

Points of view or opinions stated in this document are those of the author(s) and do not represent the official position or policies of the U. S. Department of Justice.

National Institute of Justice  
United States Department of Justice  
Washington, D. C. 20531

DATE FILMED

10/29/81



U.S. Department of Justice  
Drug Enforcement Administration

# Drug Enforcement Statistical Report Enforcement Activity Drug Abuse Indicators Organization & Training Data

*Statistics Compiled Through September 1980*

78146

U.S. Department of Justice  
National Institute of Justice

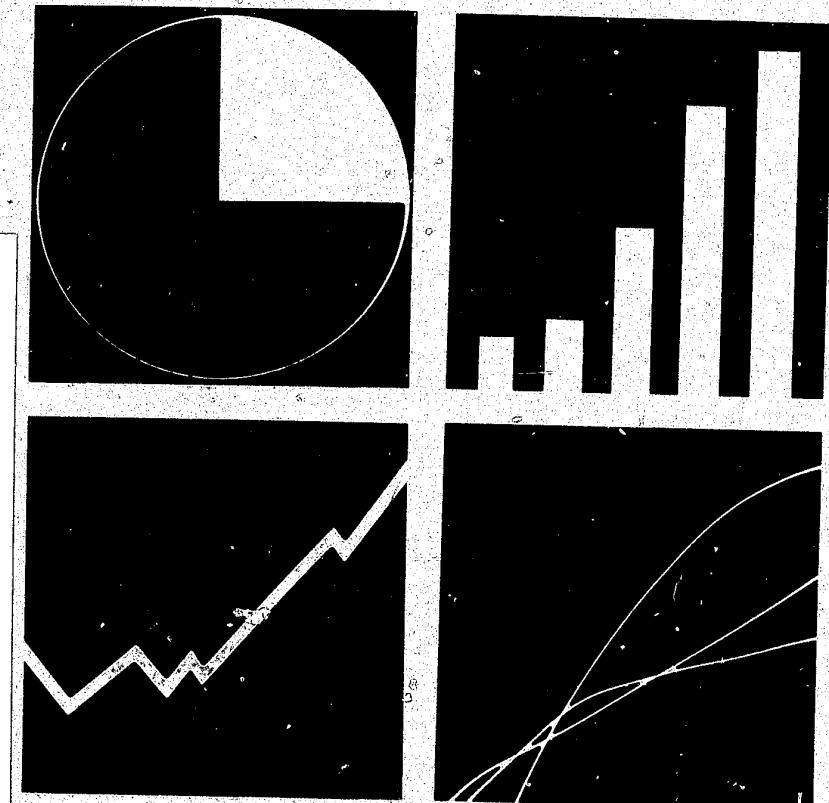
This document has been reproduced exactly as received from the person or organization originating it. Points of view or opinions stated in this document are those of the authors and do not necessarily represent the official position or policies of the National Institute of Justice.

Permission to reproduce this copyrighted material has been granted by

Public Domain/DOJ

to the National Criminal Justice Reference Service (NCJRS).

Further reproduction outside of the NCJRS system requires permission of the copyright owner.



✓  
**DRUG ENFORCEMENT STATISTICAL REPORT**  
**PREFACE**

This report, dealing with the statistics of drug law enforcement and the illicit drug problem, is prepared as a reporting vehicle. No attempt is made to project the future trends of any of the reported statistics. Each section of data is described, however, to insure that the reader is not confused by the various categories which are presented. These are intended to clarify the figures and are not evaluations of either the drug problem or the programs involved.

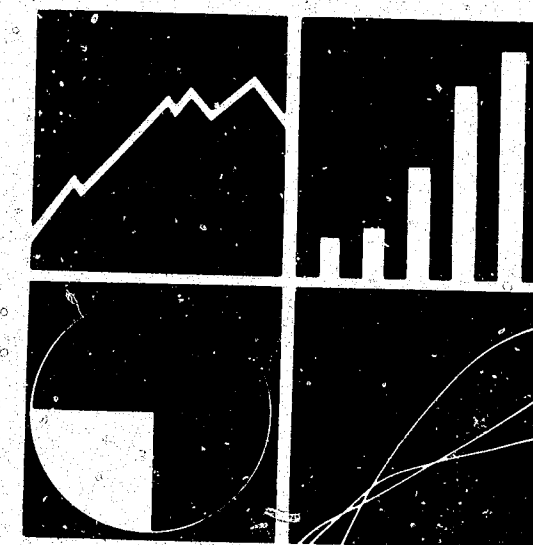
The report is divided into three sections consisting of Enforcement Activity, Drug Abuse Indicators and Organization and Training Data. Each section reflects its data base by both fiscal and calendar year, when available. There are some categories, however, such as Personnel-on-Board, where it was felt that a double presentation would be redundant. When this is the case, the data is presented only by either fiscal or calendar year.

All data presented reflects the most recent compilations available. Therefore, the final column of each chart may reflect cumulative statistics of a partial year. For instance, the column headed 3Q CY 80 contains figures for the first nine months of that calendar year.

**NCJRS**  
**MAY 11 1981**  
**ACQUISITION**

**TABLE OF CONTENTS**

<u>Section - Enforcement Activity</u>	<u>Page</u>
Enforcement Activity Overview	1
DEA Federal and DEA Initiated Task Force Arrests and Dispositions	2
Other Domestic Arrests	6
State and Local Drug Law Arrests	8
DEA/Foreign Cooperative Arrests	10
DEA Federal Domestic Drug Removals	12
DEA State and Local Task Force Removals	16
DEA/Foreign Cooperative Drug Removals	18
Ports and Borders Drug Removals	20
DEA/Customs Referral Drug Removals	24
Compliance Investigations and Regulatory Actions	26
Laboratory Analyses Performed	28
Clandestine Labs Seized	30
Aliens Arrested Within the U.S. for a Drug Offense	32
 <u>Section - Drug Abuse Indicators</u>	
Drug Abuse Indicator - Overview	35
Adjusted Heroin Price and Purity by Regional Distribution	36
National Illicit Drug Retail Prices	38
Drug Thefts by Geographic Regions	40
Drug Related Deaths Reported From Medical Examiners	42
Drug Related Injuries Reported From Hospital Emergency Rooms	44
Federally Funded Drug Treatment Admissions	46
 <u>Section - Organization and Training</u>	
Organization and Training Overview	49
DEA Personnel and Field Offices	50
Domestic and Foreign Enforcement Training	52



**ENFORCEMENT  
ACTIVITY**

# ENFORCEMENT ACTIVITY TABLE OF CONTENTS

<u>Section - Enforcement Activity</u>	<u>Page</u>
Enforcement Activity Overview	1
DEA Federal and DEA Initiated Task Force Arrests and Dispositions	2
Other Domestic Arrests	6
State and Local Drug Law Arrests	8
DEA/Foreign Cooperative Arrests	10
DEA Federal Domestic Drug Removals	12
DEA State and Local Task Force Removals	16
DEA/Foreign Cooperative Drug Removals	18
Ports and Borders Drug Removals	20
DEA/Customs Referral Drug Removals	24
Compliance Investigations and Regulatory Actions	26
Laboratory Analyses Performed	28
Clandestine Labs Seized	30
Aliens Arrested Within the U.S. for a Drug Offense	32

# **ENFORCEMENT ACTIVITY DEA/FEDERAL AND DEA INITIATED TASK FORCE ARRESTS AND DISPOSITIONS**

## DESCRIPTION OF DATA:

DEA Federal domestic and DEA Task Force arrests represent all those individuals detained by DEA within the United States. Arrest forms are submitted to Headquarters for compilation and as file records. These forms contain the drug involved in the violation as well as the charge made at the time of arrest. DEA reviews all defendant dispositions to determine the final judicial status of each individual arrested. This provides information both for the timing of case termination as well as allowing for the examination of the quality of the cases.

DEA has instituted a system to classify drug traffickers according to their significance. The most significant violators are Class I and the least significant are Class IV.

The first table reports DEA/Federal and DEA Task Force arrests by drug, the second reports the same arrests by Class of Violator, and the third table reports Federal and state court dispositions.

# **ENFORCEMENT ACTIVITY DEA/FEDERAL AND DEA INITIATED TASK FORCE ARRESTS**

By Drug	FY77	FY78	FY79	FY80
DEA Federal Total	6,230	5,594	5,306	6,423
Heroin	2,981	2,079	1,190	1,015
Cocaine	1,216	1,416	1,632	2,126
Other Narcotics	24	27	29	26
Cannabis	1,079	1,180	1,267	1,371
Hallucinogens	326	379	318	420
Depressants	148	126	196	554
Stimulants	435	348	558	747
Other	21	39	116	164
Task Force Total	2,875	2,373	2,560	2,776
Heroin	1,219	805	796	603
Cocaine	364	622	870	1,022
Other Narcotics	33	12	2	7
Cannabis	558	434	337	426
Hallucinogens	148	202	228	183
Depressants	47	51	60	73
Stimulants	291	224	229	420
Others	15	23	38	42

	CY77	CY78	CY79	3Q CY80
DEA/Federal Total	6,527	5,174	5,350	5,127
Heroin	2,981	1,650	1,032	831
Cocaine	1,337	1,466	1,695	1,647
Other Narcotics	28	20	35	20
Cannabis	1,128	1,189	1,308	1,085
Hallucinogens	404	320	348	328
Depressants	178	117	222	486
Stimulants	431	381	580	596
Other	40	31	130	134
Task Force Total	2,842	2,259	2,593	2,220
Heroin	1,142	766	729	472
Cocaine	567	634	898	837
Other Narcotics	25	10	4	5
Cannabis	580	361	380	339
Hallucinogens	165	228	199	141
Depressants	49	52	58	65
Stimulants	301	184	274	334
Others	13	24	51	27

**ENFORCEMENT ACTIVITY  
DEA/FEDERAL AND DEA INITIATED TASK FORCE ARRESTS**

By Class  
Of Violator

DEA/Federal Total  
Class I  
Class II  
Class III  
Class IV

Task Force Total  
Class I  
Class II  
Class III  
Class IV

	FY77	FY78	FY79	FY80
DEA/Federal Total	6,230	5,594	5,306	6,423
Class I	678	563	748	936
Class II	536	458	402	558
Class III	3,074	3,084	2,834	3,606
Class IV	1,942	1,489	1,322	1,323
Task Force Total	2,875	2,373	2,560	2,776
Class I	107	83	130	128
Class II	105	85	87	104
Class III	760	729	919	1,184
Class IV	1,903	1,476	1,424	1,360

DEA/Federal Total  
Class I  
Class II  
Class III  
Class IV

Task Force Total  
Class I  
Class II  
Class III  
Class IV

	CY77	CY78	CY79	3Q CY80
DEA/Federal Total	6,527	5,174	5,350	5,127
Class I	653	551	787	750
Class II	554	404	426	444
Class III	3,300	2,866	2,829	2,917
Class IV	2,020	1,353	1,308	1,016
Task Force Total	2,842	2,259	2,593	2,220
Class I	95	78	142	92
Class II	92	76	101	78
Class III	736	774	909	990
Class IV	1,919	1,331	1,441	1,060

**ENFORCEMENT ACTIVITY  
DEA/FEDERAL AND DEA INITIATED TASK FORCE DISPOSITIONS**

DEA Federal  
Convictions  
Federal  
State  
Acquittals  
Federal  
State  
Dismissals  
Federal  
State

DEA Task Force  
Convictions  
Federal  
State  
Acquittals  
Federal  
State  
Dismissals  
Federal  
State

	FY77	FY78	FY79	FY80
DEA Federal Convictions	4,043	5,722	3,861	3,049
Federal	930	1,404	1,071	926
State				
Acquittals	193	296	190	146
Federal	38	55	39	25
State				
Dismissals	618	1,587	871	534
Federal	155	311	229	265
State				
DEA Task Force Convictions	759	877	540	569
Federal	1,339	1,377	762	651
State				
Acquittals	23	43	20	44
Federal	46	62	13	17
State				
Dismissals	92	107	71	91
Federal	233	262	136	138
State				

DEA Federal  
Convictions  
Federal  
State  
Acquittals  
Federal  
State  
Dismissals  
Federal  
State

DEA Task Force  
Convictions  
Federal  
State  
Acquittals  
Federal  
State  
Dismissals  
Federal  
State

	CY76	CY77	CY78	CY79	3Q CY80
DEA Federal Convictions	5,467	4,542	5,054	3,679	2,361
Federal	1,086	984	1,356	1,048	730
State					
Acquittals	225	211	289	167	120
Federal	50	35	53	35	22
State					
Dismissals	724	713	1,559	776	381
Federal	198	166	302	248	207
State					
DEA Task Force Convictions	927	819	812	500	459
Federal	1,402	1,221	1,207	697	514
State					
Acquittals	31	20	50	21	33
Federal	52	30	53	7	16
State					
Dismissals	133	86	113	69	75
Federal	313	218	216	141	112
State					

**ENFORCEMENT ACTIVITY  
OTHER DOMESTIC ARRESTS**

DESCRIPTION OF DATA:

DEA/State and Local Cooperative Arrests represent those violators detained as a result of state or local investigations for a drug law violation in which DEA assistance was requested.

Customs and INS Referral Arrests reflect those individuals arrested by these agencies and subsequently turned over to DEA for processing and prosecution.

**ENFORCEMENT ACTIVITY  
OTHER DOMESTIC ARRESTS**

	FY77	FY78	FY79	FY80
DEA/State and Local Cooperative Arrests	1,566	1,661	1,592	1,634
Customs Referral Arrests	1,713	1,045	749	681
INS Referral Arrests	766	411	115	103

	CY76	CY77	CY78	CY79	30 CY80
DEA/State and Local Cooperative Arrests	1,258	1,750	1,615	1,602	1,238
Customs Referral Arrests	1,822	1,614	916	746	497
INS Referral Arrests	775	769	264	123	73

# ENFORCEMENT ACTIVITY STATE AND LOCAL DRUG LAW ARRESTS

## DESCRIPTION OF DATA:

These figures are obtained from State and Local jurisdictions which voluntarily submit arrest data to the Federal Bureau of Investigation. They differ from DEA/State and Local Cooperative arrests in that they represent efforts by the State or Local law enforcement agencies both alone and in cooperative activity.

The data has many limitations, the most significant being the inconsistency of drug emphasis between jurisdictions and the variance of the size of the data base from year to year.

As of CY 1977, drug law arrests are broken out by sale/manufacture or possession.

# ENFORCEMENT ACTIVITY STATE AND LOCAL DRUG LAW ARRESTS

		CY75	CY76	CY77	CY78	CY79
Grand Total		508,189	500,540	569,293	596,940	519,377
Heroin/Cocaine	Possession Sale/Manuf.	66,573	50,054	52,375 22,772	56,709 22,087	44,147 19,217
Marihuana	Possession Sale/Manuf.	351,667	360,388	350,115 55,221	365,925 57,306	317,340 46,225
Dangerous Drugs	Possession Sale/Manuf.	89,949	90,098	63,192 25,618	66,857 28,056	64,402 28,046
Total	Possession Sale/Manuf.			465,682 103,611	489,491 107,449	425,889 93,488
Arrest Rate Per 100,000 Population		283.6	285.2	298.4	288.3	253.8



# ENFORCEMENT ACTIVITY DEA FOREIGN COOPERATIVE ARRESTS

## DESCRIPTION OF DATA:

DEA Foreign Cooperative Arrests reflect the number of individuals arrested by foreign narcotic enforcement officers with the direct or indirect assistance of DEA. These arrests are reported and recorded by primary drug of violation.

# ENFORCEMENT ACTIVITY DEA FOREIGN COOPERATIVE ARRESTS

	FY77	FY78	FY79	FY80
Opium	36	56	29	8
Morphine Base	26	19	17	31
Heroin	212	305	274	340
Cocaine	522	586	736	608
Marihuana	160	122	27	73
Hashish	71	88	34	40
Hallucinogens	2	2	0	0
Stimulants	45	18	3	4
Depressants	0	2	11	2
Total	1,074	1,198	1,131	1,106

	CY76	CY77	CY78	CY79	30 CY80
Opium	100	28	65	13	8
Morphine Base	27	17	25	11	31
Heroin	306	251	303	240	303
Cocaine	573	566	569	785	433
Marihuana	221	142	104	19	67
Hashish	76	70	87	14	38
Hallucinogens	0	2	2	0	0
Stimulants	43	43	16	3	4
Depressants	7	0	2	13	0
Total	1,353	1,119	1,173	1,098	884

# ENFORCEMENT ACTIVITY TOTAL DEA DOMESTIC DRUG REMOVALS

## DESCRIPTION OF DATA:

DEA domestic removal statistics represent a total of all drug deliveries and seizures made by DEA or cooperating law enforcement agencies as part of ongoing DEA Federal investigations. The source documents for these statistics are chemist analysis reports which are prepared on each drug exhibit received at DEA laboratories. The utilization of these reports insures correct identification of each exhibit as well as accurate tabulation of the amounts removed.

Removals of heroin, cocaine, marihuana, hashish and opium are reported in net weight (including any diluent present but not the weight of wrappings or packaging). Dangerous drug removals are usually shown in dosage units, however, when they involve powder and the chemist's analysis does not include potency of the exhibit, the net weight is reported with no attempted conversion to dosage units.

# ENFORCEMENT ACTIVITY TOTAL DEA DOMESTIC DRUG REMOVALS

	FY77	FY78	FY79	FY80
Heroin (lbs.)	610	430	248	160
Cocaine (lbs.)	434	663	1,064	2,552
Marihuana (lbs.)	406,883	1,038,191	918,501	533,482
Hashish (lbs.)	6,821	2,993	43,165	4,199
Hallucinogens (d.u.)	2,187,061	5,081,177	6,771,794	5,698,975
Depressants (d.u.)	770,364	414,153	1,084,762	11,005,218
Stimulants (d.u.)	5,935,988	3,187,828	6,609,346	5,856,046

	CY76	CY77	CY78	CY79	3Q CY80
Heroin (lbs.)	645	488	442	160	137
Cocaine (lbs.)	512	399	1,009	1,139	2,037
Marihuana (lbs.)	290,909	335,452	1,117,422	887,032	442,336
Hashish (lbs.)	5,040	6,651	3,004	43,261	4,065
Hallucinogens (d.u.)	1,824,276	3,848,117	4,349,917	6,439,136	4,720,508
Depressants (d.u.)	907,029	867,960	311,044	5,671,379	6,356,770
Stimulants (d.u.)	4,975,021	5,917,767	2,901,948	7,711,628	4,193,489

**ENFORCEMENT ACTIVITY  
DEA DOMESTIC DRUGS REMOVED THROUGH SEIZURES**

	FY77	FY78	FY79	FY80
Heroin (lbs.)	528	374	212	123
Cocaine (lbs.)	401	624	1,020	2,516
Marihuana (lbs.)	406,440	1,038,154	915,772	533,468
Hashish (lbs.)	6,820	2,993	43,164	4,198
Hallucinogens (d.u.)	1,947,687	4,654,896	5,691,574	5,397,125
Depressants (d.u.)	627,832	396,675	1,027,666	10,863,976
Stimulants (d.u.)	5,055,961	2,553,665	5,787,338	5,412,263

	CY76	CY77	CY78	CY79	3Q CY80
Heroin (lbs.)	549	410	396	126	107
Cocaine (lbs.)	482	363	973	1,094	2,010
Marihuana (lbs.)	290,456	335,440	1,114,699	886,985	442,326
Hashish (lbs.)	5,039	6,650	3,003	43,261	4,064
Hallucinogens (d.u.)	1,598,594	3,638,269	3,657,838	5,483,547	4,601,586
Depressants (d.u.)	805,941	736,100	289,436	5,591,556	6,244,806
Stimulants (d.u.)	4,449,195	4,825,958	2,509,023	6,809,046	3,908,479

**ENFORCEMENT ACTIVITY  
DEA DOMESTIC DRUGS REMOVED THROUGH DELIVERY**

	FY77	FY78	FY79	FY80
Heroin (lbs.)	82	56	36	37
Cocaine (lbs.)	33	39	44	36
Marihuana (lbs.)	443	37	2,729	14
Hashish (lbs.)	1	0	1	1
Hallucinogens (d.u.)	239,374	426,281	1,080,220	301,850
Depressants (d.u.)	142,532	17,478	57,096	141,242
Stimulants (d.u.)	880,027	634,163	822,008	443,783

	CY76	CY77	CY78	CY79	3Q CY80
Heroin (lbs.)	96	78	46	34	30
Cocaine (lbs.)	30	36	36	45	27
Marihuana (lbs.)	453	12	2,723	47	10
Hashish (lbs.)	1	1	1	0	1
Hallucinogens (d.u.)	225,682	209,848	692,079	955,589	118,922
Depressants (d.u.)	101,088	131,860	21,608	79,823	111,964
Stimulants (d.u.)	525,826	1,091,809	392,925	902,582	285,010

# ENFORCEMENT ACTIVITY DEA STATE AND LOCAL TASK FORCE DRUG REMOVALS

## DESCRIPTION OF DATA:

DEA, in cooperation with state and local law enforcement agencies, participates in a Task Force program designed to effect the mid-level to street-level activities of drug dealers. Toward this end, combined DEA/State/Local agent teams conduct investigations which lead to the removal of illicit drugs. Statistics reported as Task Force Removals are only those removals which are sent to DEA labs for analysis. Exhibits which are turned over to state or local labs for analysis are not reported.

Removal quantities are the same weights or dosage units as reported on DEA removal charts, which were described previously.

# ENFORCEMENT ACTIVITY DEA STATE AND LOCAL TASK FORCE REMOVALS

	FY77	FY78	FY79	FY80
Heroin (lbs.)	97	83	137	144
Cocaine (lbs.)	58	80	199	187
Marihuana (lbs.)	16,394	12,315	122,607	31,133
Hashish (lbs.)	153	246	52	242
Hallucinogens (d.u.)	228,798	895,071	3,530,621	133,930
Depressants (d.u.)	19,803	136,777	1,013,573	287,699
Stimulants (d.u.)	1,079,890	361,680	3,283,327	12,933,183

	CY76	CY77	CY78	CY79	3Q CY80
Heroin (lbs.)	118	93	117	140	96
Cocaine (lbs.)	59	61	92	236	125
Marihuana (lbs.)	35,209	13,384	118,209	17,609	29,353
Hashish (lbs.)	57	108	247	270	22
Hallucinogens (d.u.)	83,762	244,419	964,880	3,436,288	90,998
Depressants (d.u.)	63,459	53,866	103,845	1,044,288	245,505
Stimulants (d.u.)	526,726	1,131,211	628,960	4,650,813	11,172,800

ENFORCEMENT ACTIVITY  
DEA/FOREIGN COOPERATIVE DRUG REMOVALS

DESCRIPTION OF DATA:

DEA/foreign cooperative drug removals reflect the volume of drugs seized by foreign narcotics enforcement officials with the assistance of DEA.

Unlike domestic drug removal statistics, which are verified by laboratory analysis, foreign removals represent the gross weight of each suspected drug.

ENFORCEMENT ACTIVITY  
DEA/FOREIGN COOPERATIVE DRUG REMOVALS

	FY77	FY78	FY79	FY80
Opium (lbs.)	31,514	15,342	697	156
Morphine Base (lbs.)	151	588	438	529
Heroin (lbs.)	1,564	1,493	1,251	1,508
Cocaine (lbs.)	3,857	6,198	10,207	10,376
Marihuana (lbs.)	261,818	1,304,024	604,662	134,238
Hashish (lbs.)	24,714	73,781	20,384	5,723
Hashish Oil (qts.)	5	19	0	2
Hashish Oil (lbs.)	558	4	0	2
Hallucinogens (d.u.)	7	2	1,715	144
Hallucinogens (gross lbs.)	0	0	0	0
Depressants (d.u.)	989,256	2,120,841	1,010,134	1,144,474
Depressants (gross lbs.)	0	3,993	0	41
Stimulants (d.u.)	30	301,005	75,000	21,000,010
Stimulants (gross lbs.)	50	2	0	8

	CY76	CY77	CY78	CY79	3Q CY80
Opium (lbs.)	19,423	37,873	9,602	79	154
Morphine Base (lbs.)	565	226	656	340	477
Heroin (lbs.)	653	1,948	1,706	766	1,333
Cocaine (lbs.)	2,507	6,245	5,958	8,790	9,152
Marihuana (lbs.)	310,952	334,482	1,298,960	514,426	121,089
Hashish (lbs.)	14,263	29,321	88,982	5,919	0
Hashish Oil (qts.)	11	12	12	2	0
Hashish Oil (lbs.)	191	550	0	0	2
Hallucinogens (d.u.)	0	9	0	1,715	144
Hallucinogens (gross lbs.)	0	0	0	0	0
Depressants (d.u.)	15,098,985	3,029,790	80,432	1,010,000	1,144,474
Depressants (gross lbs.)	1,325	0	3,993	0	41
Stimulants (d.u.)	869,553	277,684	23,351	75,000	21,000,010
Stimulants (gross lbs.)	4	49	2	0	8

# ENFORCEMENT ACTIVITY PORTS AND BORDERS DRUG REMOVALS

## DESCRIPTION OF DATA:

Federal drug removals along the U.S. border and at ports of entry are reported to DEA by the Immigration and Naturalization Service and the U.S. Customs Service. While these agencies are responsible for the bulk of the removals, DEA frequently participates in investigations leading to the seizures. Due to this, overlapping in reporting does, at times, occur. The data is tabulated from seizures analyzed by field tests performed at the time of the seizure. Dangerous drug seizures are not broken out into categories (e.g., stimulants, depressants, hallucinogens) but, rather, are considered as one category labeled "dangerous drugs" and reported in terms of five grain units.

# ENFORCEMENT ACTIVITY CUSTOM SERVICE ILLICIT DRUG REMOVALS

	FY77	FY78	FY79	FY80
Opium (lbs.)	20	20	26	50
Heroin (lbs.)	278	189	123	269
Cocaine (lbs.)	951	1,422	1,438	4,743
Marihuana (lbs.)	1,547,055	4,616,895	3,583,555	2,361,142
Hashish (lbs.)	15,922	22,659	9,173	14,675
Dangerous Drugs (d.u.)	7,811,733	7,687,348	15,912,218	43,000,416

	CY76	CY77	CY78	CY79	3Q CY80
Opium (lbs.)	38	17	43	45	8
Heroin (lbs.)	253	240	192	209	132
Cocaine (lbs.)	1,068	1,142	1,339	2,208	3,604
Marihuana (lbs.)	822,340	1,633,774	4,961,480	3,438,554	1,302,908
Hashish (lbs.)	7,354	18,220	22,796	10,178	10,913
Dangerous Drugs (d.u.)	19,404,803	8,009,453	18,035,065	22,781,051	26,069,985

**ENFORCEMENT ACTIVITY  
IMMIGRATION AND NATURALIZATION SERVICE ILLICIT DRUG REMOVALS**

	FY77	FY78	FY79	FY80
Opium (lbs.)	1	0	0	0
Heroin (lbs.)	73	1	0	3
Cocaine (lbs.)	26	41	94	445
Marihuana (lbs.)	180,959	177,488	105,423	62,176
Hashish (lbs.)	159	25	17	18
Dangerous Drug (d.u.)	146,370	57,679	31,921	116,798

	CY76	CY77	CY78	CY79	30 CY80
Opium (lbs.)	1	0	0	0	0
Heroin (lbs.)	107	66	17	3	2
Cocaine (lbs.)	37	22	45	101	429
Marihuana (lbs.)	224,894	154,417	241,035	32,795	50,375
Hashish (lbs.)	56	157	40	6	14
Dangerous Drugs (d.u.)	91,492	147,050	59,525	30,327	112,880

**ENFORCEMENT ACTIVITY  
COAST GUARD\***

	CY76	CY77	CY78	CY79	30 CY80
Opium (lbs.)	0	0	0	0	0
Heroin (lbs.)	0	0	0	0	0
Cocaine (lbs.)	44	0	0	0	0
Marihuana (lbs.)	200,568	1,022,799	3,276,292	2,562,000	673,161
Hashish (lbs.)	0	0	0	43,550	570
Dangerous Drugs (d.u.)	0	0	500,000	4,186,000	514,557

\*Drugs removed by the United States Coast Guard are, in most cases, turned over to other agencies for disposal after seizure. For this reason, the statistics reported above may also be included in the removal figures of other Federal agencies. To avoid duplicate counting, the above figures should not be included in total domestic removal statistics.

# ENFORCEMENT ACTIVITY DEA/CUSTOMS REFERRAL DRUG REMOVALS

## DESCRIPTION OF DATA:

DEA/Customs Referral drug removals include U.S. Customs Service seizures for which DEA assumes investigative jurisdiction, and drugs removed by the U.S. Customs Service or DEA as part of a joint investigation. Only those removals which are sent to DEA labs for analysis are reported. This data may also be included in the U.S. Customs Service removals reported separately in this report under Ports and Borders Drug Removals. To avoid duplicate counting, these figures should be excluded from any aggregation of Federal drug removals.

# ENFORCEMENT ACTIVITY DEA/CUSTOMS REFERRAL DRUG REMOVALS

Heroin (lbs.)  
Cocaine (lbs.)  
Marihuana (lbs.)  
Hashish (lbs.)  
Hallucinogens (d.u.)  
Depressants (d.u.)  
Stimulants (d.u.)

FY78	FY79	FY80
73	55	128
611	886	4,322
698,127	381,147	163,482
10,831	343	812
740	236	110
169,284	208,294	1,465,339
2,608,953	4,225	627

Heroin (lbs.)  
Cocaine (lbs.)  
Marihuana (lbs.)  
Hashish (lbs.)  
Hallucinogens (d.u.)  
Depressants (d.u.)  
Stimulants (d.u.)

CY77	CY78	CY79	3Q CY80
169	74	79	96
541	579	1,238	3,767
382,793	600,840	421,579	102,379
5,254	10,542	947	95
2,961	274	236	110
21,892	180,872	312,887	1,343,946
3,813,035	2,608,983	3,924	627



## ENFORCEMENT ACTIVITY COMPLIANCE INVESTIGATIONS AND REGULATORY ACTIONS

### DESCRIPTION OF DATA:

DEA has the responsibility, under the Controlled Substances Act, to reduce the quantity of legally manufactured drugs diverted for illicit purposes. To accomplish this, a regulatory program has been established by which the DEA licenses and inspects legitimate handlers of controlled drugs. Inspections are performed on a scheduled or complaint basis and actions are administered according to the violation.

## ENFORCEMENT ACTIVITY COMPLIANCE INVESTIGATIONS AND REGULATORY ACTIONS

	FY77	FY78	FY79	FY80
Investigations	1,440	1,243	1,042	1,007
Manufacturer	117	181	146	129
Distributor	498	484	502	431
Pharmacy	210	172	62	66
Practitioner	149	86	42	65
Other	466	320	290	316
Administrative Actions	1,076	978	839	694
Manufacturer	94	119	86	73
Distributor	299	306	353	238
Pharmacy	291	213	116	113
Practitioner	203	153	98	113
Other	189	187	186	157
Arrests/Seizures	48	33	17	37
Manufacturer	0	4	1	0
Distributor	3	5	3	2
Pharmacy	22	11	9	14
Practitioner	18	13	3	12
Other	5	0	1	9

	CY76	CY77	CY78	CY79	3Q CY80
Investigations	1,643	1,392	1,172	1,026	775
Manufacturer	154	133	159	143	100
Distributor	471	509	486	493	320
Pharmacy	301	172	160	47	54
Practitioner	150	131	73	43	52
Other	567	447	294	300	249
Administrative Actions	1,112	1,027	937	823	507
Manufacturer	97	102	102	92	49
Distributor	261	322	311	341	169
Pharmacy	332	232	212	99	87
Practitioner	167	188	137	99	85
Other	255	183	175	192	117
Arrests/Seizures	31	52	22	26	28
Manufacturer	4	0	4	1	0
Distributor	3	4	4	4	1
Pharmacy	12	20	8	12	11
Practitioner	7	23	6	7	8
Other	5	5	0	2	8

# ENFORCEMENT ACTIVITY LABORATORY ANALYSES PERFORMED

## DESCRIPTION OF DATA:

The DEA laboratory system is composed of seven regional laboratories located throughout the continental United States and the Special Testing and Research Laboratory located in the Washington, D.C. area. The laboratories conduct qualitative and quantitative chemical analyses on controlled drug evidence. The data presented denotes exhibits of evidence submitted by DEA and DEA/ Task Force agents as well as those from state, local and other federal law enforcement agencies.

# ENFORCEMENT ACTIVITY LABORATORY ANALYSES PERFORMED

	FY77	FY78	FY79	FY80
DEA	17,369	16,505	18,692	21,394
State and Local	13,347	10,969	9,574	9,563
Other Federal Agencies	1,786	1,692	1,500	2,204
TOTAL	32,502	29,166	29,766	33,161

	CY76	CY77	CY78	CY79	3Q CY80
DEA	18,697	17,194	16,912	19,453	15,479
State and Local	14,925	11,827	11,403	8,925	6,988
Other Federal Agencies	1,016	1,733	1,760	1,509	1,824
TOTAL	34,638	30,754	30,075	29,887	24,291

# ENFORCEMENT ACTIVITY CLANDESTINE LABS SEIZED

## DESCRIPTION OF DATA:

Clandestine laboratory seizures represent those illicit drug manufacturing plants discovered and seized by DEA in the course of its domestic criminal investigations.

# ENFORCEMENT ACTIVITY CLANDESTINE LABS SEIZED

Cocaine  
Cannabis  
Methamphetamine  
Amphetamine  
PCP  
MDA  
Methaqualone  
Other  
  
Total

FY77	FY78	FY79	FY80
2	4	3	4
3	4	6	2
42	56	105	129
7	8	21	22
44	58	42	52
4	1	6	8
6	7	7	15
6	5	5	19
114	143	195	251

Cocaine  
Cannabis  
Methamphetamine  
Amphetamine  
PCP  
MDA  
Methaqualone  
Other  
  
Total

CY77	CY78	CY79	3Q CY80
2	4	4	3
4	5	4	2
46	63	121	95
6	13	20	17
50	57	46	37
3	3	5	7
9	6	7	12
7	3	10	14
127	154	217	187

# ENFORCEMENT ACTIVITY ALIENS ARRESTED WITHIN THE U.S. FOR A DRUG OFFENSE

## DESCRIPTION OF DATA:

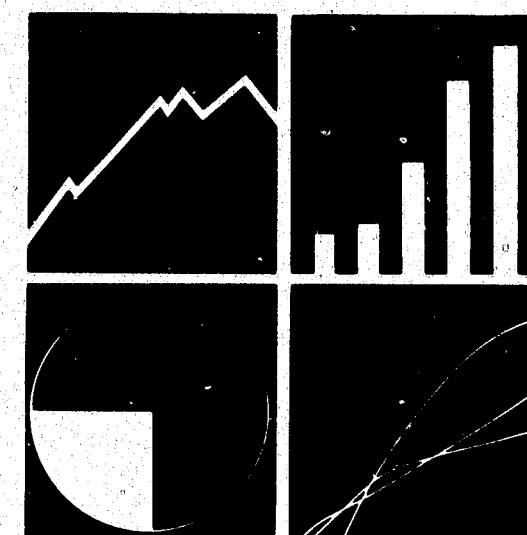
These figures are obtained from the Personal History Report submitted for all DEA defendants. The aliens represented by these statistics include DEA and Task Force defendants as well as those violators detained by other Federal agencies who were turned over to DEA for processing.

# ENFORCEMENT ACTIVITY ALIENS ARRESTED WITHIN THE U.S. FOR A DRUG OFFENSE

	CY76	CY77	CY78	CY79	3Q CY80
Albania	0	0	0	2	1
Algeria	1	0	2	0	0
Antigua	0	0	0	1	0
Argentina	3	6	8	8	9
Australia	2	7	1	4	3
Austria	1	1	1	0	2
Bahamas	2	0	0	1	4
Bangladesh	0	0	3	0	0
Barbados	0	2	2	0	0
Belgium	0	1	0	0	0
Belize	0	1	1	2	0
Bolivia	8	1	10	7	12
Brazil	7	9	5	2	5
British Virgin Islands	0	0	1	0	0
British West Indies	0	0	0	4	0
Brunei	0	0	0	0	1
Bulgaria	0	0	0	0	4
Canada	64	63	54	54	72
Cayman Islands	0	0	0	0	1
Chile	5	7	5	9	8
China	0	1	1	1	1
Colombia	183	239	446	432	270
Costa Rica	5	3	2	4	1
Cuba	68	105	139	177	127
Cyprus	0	0	0	3	0
Czechoslovakia	1	0	0	1	0
Dahomey	1	0	0	0	0
Denmark	0	1	0	0	0
Dominican Republic	28	22	24	40	20
Ecuador	10	12	22	21	15
Egypt	0	0	3	0	0
El Salvador	2	5	1	1	4
France	5	7	5	2	7
Germany (West)	5	6	6	13	8
Ghana	6	0	4	0	4
Grand Caymon	0	1	0	0	0
Great Britain	12	18	7	18	4
Greece	2	0	5	8	3
Grenada	0	0	1	0	0
Guatamala	0	4	2	2	3
Guyana	0	1	1	2	1
Haiti	10	2	6	5	7
Honduras	1	5	2	15	1
Hong Kong	0	3	4	2	1
Hungary	0	1	1	0	2
India	1	3	3	1	3
Iran	4	0	8	20	41

**ENFORCEMENT ACTIVITY  
ALIENS ARRESTED WITHIN THE U.S. FOR A DRUG OFFENSE**

	CY76	CY77	CY78	CY79	3Q CY80
Iraq	1	0	0	0	0
Ireland	2	2	0	0	1
Israel	1	4	1	6	4
Italy	5	6	8	12	15
Jamaica	9	13	11	38	14
Japan	2	1	2	3	2
Jordan	0	0	0	0	1
Kenya	0	0	1	1	0
Korea	1	0	0	3	0
Laos	0	0	2	0	0
Lebanon	0	2	3	1	5
Luxembourg	0	0	1	0	0
Malaysia	0	0	2	0	2
Mexico	1,238	774	507	411	338
Morocco	0	0	1	2	0
Netherlands	1	4	10	1	2
New Zealand	0	1	3	0	1
Nicaragua	1	0	5	6	4
Nigeria	0	1	4	8	5
Norway	1	0	1	0	0
Pakistan	1	1	3	1	6
Panama	11	4	5	3	5
Peru	25	20	21	28	30
Philippines	0	3	2	7	4
Poland	2	2	0	1	2
Portugal	1	0	0	2	2
Santo Domingo	0	0	4	0	0
Sierra Leone	0	0	0	0	2
Singapore	0	3	1	0	0
South Africa	0	0	0	0	1
Soviet Union	0	1	0	1	1
Spain	4	4	3	5	1
Surinam	0	1	1	0	0
Sweden	0	2	0	0	0
Switzerland	2	0	1	0	0
Syria	1	0	0	2	0
Thailand	36	9	27	24	11
Trinidad	2	3	2	4	0
Turkey	4	1	1	6	1
Uruguay	1	0	3	5	6
Venezuela	5	20	12	7	18
Vietnam	0	0	1	0	2
West Indies	0	0	0	0	2
Yemen	0	0	1	0	0
Yugoslavia	2	0	0	0	0
Total	1,796	1,419	1,435	1,450	1,133



**DRUG  
ABUSE  
INDICATORS**

## DRUG ABUSE INDICATORS TABLE OF CONTENTS

<u>Section</u> - Drug Abuse Indicators	<u>Page</u>
Drug Abuse Indicator - Overview	35
Adjusted Heroin Price and Purity by Regional Distribution	36
National Illicit Drug Retail Prices	38
Drug Thefts by Geographic Regions	40
Drug Related Deaths Reported From Medical Examiners	42
Drug Related Injuries Reported From Hospital Emergency Rooms	44
Federally Funded Drug Treatment Admissions	46

## DRUG ABUSE INDICATORS ADJUSTED HEROIN RETAIL PRICE AND PURITY BY GEOGRAPHICAL DISTRIBUTION

### DESCRIPTION OF DATA:

Heroin price and purity figures are based upon a systematic examination of the evidence exhibits removed from the illicit market by DEA. They are calculated utilizing an exclusion criterion which selects only those exhibits which fall within a certain range of values representative of the retail level of the illicit market.

The sensitivity of quarterly heroin price and purity statistics to the occurrence of potential data anomalies which could prejudice the sample group requires that a statistical smoothing process also be utilized to limit the influence of these occurrences. Additionally, beginning with CY 1978, a further system refinement was added whereby the clustering of a large number of transactions in one location is diffused. This is done by weighting regional means according to the intensity of the narcotic problem geographically prior to deriving a national figure.

Beginning this quarter, samples gathered by DEA's Monitor program, which fit within our exclusion criteria, have been added to our data base. The Monitor program encompasses six cities and its addition to our data base has not significantly altered price data.

Care should be taken to use this data only as a general trend indicator since the available data base is not considered large enough to produce information reflective of absolute price or purity.

Calendar year figures are represented by end of year figures.

## DRUG ABUSE INDICATORS ADJUSTED HEROIN RETAIL PRICE AND PURITY BY GEOGRAPHICAL DISTRIBUTION

		CY76	CY77	CY78	CY79	3Q CY80
PRICE - Per Milligram Pure						
National	- Purity Price	6.1% \$1.40	5.1% \$1.59	3.5 \$2.19	3.8 2.29	3.8 2.23
North Eastern	- Purity Price	5.9 1.39	4.5 1.73	2.8 2.05	3.4 1.82	3.9 1.66
North Central	- Purity Price	6.1 1.69	4.3 2.03	3.3 2.19	3.4 2.83	3.7 2.63
South Eastern	- Purity Price	6.0 1.59	5.6 1.62	3.8 2.70	4.4 2.35	3.3 2.57
South Central	- Purity Price	7.2 .94	5.1 1.28	4.4 1.97	4.2 2.65	3.8 2.56
Western	- Purity Price	6.2 1.37	6.4 1.44	5.1 3.23	4.5 2.36	4.9 2.43

## DRUG ABUSE INDICATORS NATIONAL ILLICIT DRUG RETAIL PRICES

### DESCRIPTION OF DATA:

Cocaine prices are derived from the cocaine retail price index based upon evidence exhibits purchased by DEA. Dangerous Drug prices are based upon quarterly reports submitted by DEA field offices in twenty-four large metropolitan areas.

The prices reflected in the Dangerous Drug section represent data compiled by a newly initiated collection effort which reflects transaction data at the retail level. For this reason, data prior to CY 1979 is not being included to preclude the possibility of erroneously comparing figures from the new system with those reported previously.

Care should be taken to use this data only as a general trend indicator since the available data base is not considered large enough to produce information reflective of absolute price. Calendar year prices are reported as end of year figures.

## DRUG ABUSE INDICATORS NATIONAL ILLICIT DRUG RETAIL PRICES

	CY79	3Q CY80
Cocaine (gms.)*	780.00	680.00
Marihuana (gm.)	1.42	1.56
Hashish (gm.)	5.37	3.03
LSD (d.u.)	3.18	3.40
PCP (d.u.) (gms.)	7.95 64.52	8.23 73.55
Barbiturates (d.u.)	2.99	3.36
Amphetamine (d.u.)	3.49	3.61

\*Cocaine prices are per gram pure and are as of the end of: CY 75 - \$560; CY 76 - \$530; CY 77 - \$640; CY 78 - \$650. (All prices are reported as year end figures.)



# DRUG ABUSE INDICATORS DRUG THEFTS BY GEOGRAPHIC REGIONS

## DESCRIPTION OF DATA:

Registered handlers of controlled substances are required under the Controlled Substances Act to report the theft of any controlled drugs. The data presented summarizes, by DEA region, the number of thefts and volume of drugs stolen. The figures on the lower half of the following page represent dosage units lost in increments of one thousand.

# DRUG ABUSE INDICATORS DRUG THEFTS BY GEOGRAPHIC REGIONS

Number of Theft	CY76	CY77	CY78	CY79	3Q CY80
Pharmacies - Subtotal	5,937	7,062	7,604	8,142	6,013
North East	1,305	1,534	1,509	1,309	741
South East	1,472	1,927	2,008	2,399	1,648
North Central	1,563	1,631	1,858	1,929	1,533
South Central	774	944	952	1,266	894
West	823	1,026	1,277	1,239	1,197
Manuf./Distrib. - Subtotal	1,685	1,673	2,130	2,042	1,725
North East	379	519	679	506	330
South East	290	298	380	400	237
North Central	700	473	619	632	688
South Central	177	240	255	365	330
West	139	143	197	139	140
Other - Subtotal	1,252	1,339	1,296	1,219	1,041
North East	249	240	289	230	160
South East	292	288	244	262	254
North Central	357	387	365	336	300
South Central	143	162	163	175	152
West	211	262	235	216	175
Total	8,874	10,074	11,030	11,403	8,779

Volume Lost Dosage Units X 1000	CY76	CY77	CY78	CY79	3Q CY80
Narcotics - Subtotal	10,614	10,072	11,732	12,210	8,319
North East	3,891	2,572	3,222	2,587	1,166
South East	2,147	2,400	2,708	2,988	2,167
North Central	2,446	2,675	3,157	2,867	2,139
South Central	791	979	1,025	1,497	1,032
West	1,339	1,446	1,626	2,271	1,815
Stimulants - Subtotal	12,315	9,596	11,636	11,268	4,362
North East	5,731	2,863	5,011	5,784	827
South East	1,697	1,826	1,567	1,343	942
North Central	2,942	1,980	2,592	1,814	1,211
South Central	838	960	1,191	1,028	479
West	1,107	1,967	1,275	1,299	903
Depressants - Subtotal	43,512	24,601	23,349	21,436	14,281
North East	27,809	7,920	5,490	5,436	2,505
South East	4,454	5,293	4,747	4,967	3,855
North Central	6,515	5,658	7,537	5,635	4,241
South Central	1,965	2,500	2,398	2,359	1,670
West	2,769	3,230	3,177	3,039	2,010
Total	66,441	44,269	46,717	44,914	26,962

# DRUG ABUSE INDICATORS DRUG RELATED DEATHS REPORTED FROM MEDICAL EXAMINERS

## DESCRIPTION OF DATA:

In July 1973, DEA instituted a data collection system to capture death statistics related to drug use or abuse. This system involves the gathering of data from medical examiners in 24 major SMSA's throughout the continental United States and is part of the DEA/NIDA DAWN (Drug Abuse Warning Network) contract. Drug related deaths are reported by drug for all 24 SMSA's. Both overdoses and cases where drugs were found to be present but could not be affirmed as the cause of deaths are reported. Since heroin in the bloodstream quickly breaks down to a morphine base, the two drugs have been combined into one category.

Statistics are reported according to a drug hierarchy reflected in the tables. When a death involving two or more drugs is reported, the statistic is shown only in the highest drug on the list. For example, if a death is related to heroin and amphetamines, it will be recorded only as a heroin death.

# DRUG ABUSE INDICATORS DRUG RELATED DEATHS REPORTED FROM MEDICAL EXAMINERS

	CY76	CY77	CY78	CY79	2Q CY80
Heroin	1,705	718	612	684	307
Methadone	286	380	317	338	96
Other Narcotics	154	208	268	363	162
Barbiturates	975	926	859	753	290
Other Depressants	770	868	784	801	364
Amphetamines	35	39	48	40	13
Other Stimulants	183	229	223	249	115
Cocaine	23	33	43	58	33
Cannabis	1	7	19	10	1
Hallucinogens	19	55	80	92	34
Other Substances	129	115	87	66	15
Total	4,280	3,578	3,340	3,454	1,430

**DRUG ABUSE INDICATORS**  
**DRUG RELATED INJURIES REPORTED FROM HOSPITAL EMERGENCY ROOMS**

DESCRIPTION OF DATA:

As with drug related deaths, injuries are reported from 24 major SMSA's. The statistics are compiled from hospital emergency room reports submitted to DAWN.

Like deaths, injuries are reported according to a drug hierarchy and all injuries which involve more than one drug are shown only in the highest drug category.

**DRUG ABUSE INDICATORS**  
**DRUG RELATED INJURIES REPORTED FROM HOSPITAL EMERGENCY ROOMS**

	CY76	CY77	CY78	CY79	3Q CY80 *
Heroin	19,118	12,301	9,494	9,715	8,959
Methadone	6,011	5,082	4,544	3,529	2,641
Other Narcotics	5,928	6,848	7,455	7,743	5,991
Barbiturates	12,627	11,967	10,166	10,201	9,545
Other Depressants	55,059	57,863	56,861	56,495	47,198
Amphetamines	2,012	2,073	2,291	2,780	2,599
Other Stimulants	3,785	4,424	4,395	4,646	4,481
Cocaine	1,247	1,588	1,917	2,227	2,374
Cannabis	2,801	3,887	4,844	5,087	3,196
Hallucinogens	3,143	4,997	9,450	9,652	5,649
Other Substances	3,141	2,963	2,657	2,185	1,277
Total	114,872	113,993	114,074	14,260	93,910

\*Preliminary data.

# **DRUG ABUSE INDICATORS FEDERALLY FUNDED DRUG TREATMENT ADMISSIONS**

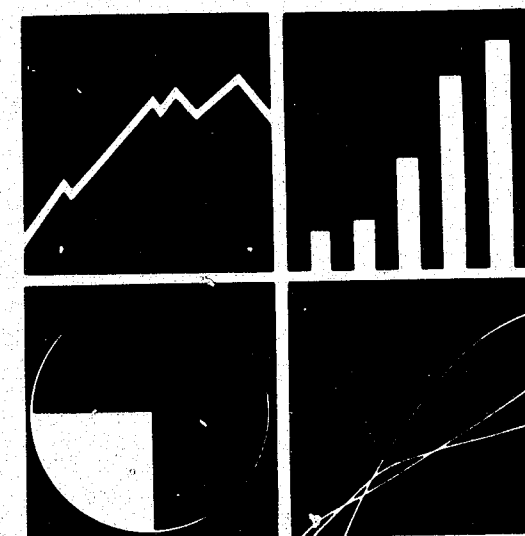
# **DRUG ABUSE INDICATORS FEDERALLY FUNDED DRUG TREATMENT ADMISSIONS**

## **DESCRIPTION OF DATA:**

All treatment facilities throughout the United States which receive all or part of their funding from the Federal government are required to submit admission data to the National Institute of Drug Abuse as part of the Client Oriented Data Acquisition Process (CODAP). The data presented on the following page represents total national admissions to CODAP programs by drug in both absolute numbers and percentages. The drug categories listed reflect the primary substance being abused at the time of admission and are not necessarily the only drug being used by patients.

Primary Drug Used at  
Time of Admission

	CY76	CY77	CY78	CY79	3Q CY80
Heroin	152,577 (62.4%)	114,325 (54.5%)	94,969 (43.0%)	83,785 (38.6%)	65,057 (36.3%)
Methadone	1,467 (.6%)	2,732 (1.3%)	3,475 (1.6%)	2,740 (1.3%)	1,502 (0.8%)
Other Opiates	5,135 (2.1%)	7,356 (3.5%)	10,392 (4.7%)	12,925 (5.9%)	12,345 (6.9%)
Alcohol	17,360 (7.1%)	17,443 (8.3%)	19,362 (8.8%)	17,850 (8.2%)	13,883 (7.7%)
Marihuana	21,273 (8.7%)	22,067 (10.5%)	27,758 (12.6%)	33,746 (15.5%)	30,843 (17.2%)
Barbiturates	11,003 (4.5%)	10,508 (5.0%)	9,563 (4.3%)	8,239 (3.8%)	6,122 (3.4%)
Tranquilizers	- nil	4,203 (2.0%)	5,707 (2.6%)	6,304 (2.9%)	4,906 (2.7%)
Other Sedatives	6,601 (2.7%)	4,203 (2.0%)	4,239 (1.9%)	4,977 (2.3%)	5,331 (3.0%)
Amphetamines	11,003 (4.5%)	10,928 (5.2%)	12,652 (5.7%)	13,729 (6.3%)	13,211 (7.4%)
Cocaine	2,934 (1.2%)	3,783 (1.8%)	5,443 (2.5%)	7,842 (3.6%)	7,728 (4.3%)
Hallucinogens	5,868 (2.4%)	7,776 (3.7%)	11,008 (5.0%)	13,387 (6.2%)	3,928 (2.2%)
PCP	-	-	-	-	6,294 (3.5%)
Inhalants	2,934 (1.2%)	2,942 (1.4%)	3,205 (1.5%)	3,032 (1.4%)	2,248 (1.3%)
Over-the-Counter	489 (0.2%)	420 (0.2%)	613 (0.2%)	515 (0.2%)	404 (0.2%)
Other	978 (0.4%)	1,472 (0.7%)	1,220 (0.6%)	1,507 (0.7%)	1,187 (0.7%)
Missing Data	4,983 (2.0%)	0 (0.0%)	11,255 (5.1%)	6,690 (3.1%)	4,330 (2.4%)
Total Admissions	244,515	210,158	220,861	217,268	179,319



ORGANIZATION  
&  
TRAINING  
DATA

## ORGANIZATION AND TRAINING ACTIVITY TABLE OF CONTENTS

<u>Section</u> - Organization and Training	<u>Page</u>
Organization and Training Overview	49
DEA Personnel and Field Offices	50
Domestic and Foreign Enforcement Training	52

**ORGANIZATION AND TRAINING DATA  
DEA PERSONNEL AND FIELD OFFICES**

DESCRIPTION OF DATA:

These statistics reflect all DEA offices and personnel including Special Agents, Compliance Investigators and support personnel. Calendar year figures are represented by end of year figures.

**ORGANIZATION AND TRAINING DATA  
DEA PERSONNEL AND FIELD OFFICES**

	CY76	CY77	CY78	CY79	3Q CY80
DEA Personnel					
Total On-Board	3,991	3,925	3,928	4,147	4,025
Special Agents On-Board	2,015	1,968	1,945	1,942	1,928
Domestic Regions	1,513	1,460	1,419	1,401	1,396
Foreign Regions	167	165	159	171	156
Basic Agent School	0	0	0	40	33
Other Training	0	4	17	6	4
Headquarters	221	224	140	129	133
Task Force	114	115	126	115	120
Security Field Office	-	-	42	38	40
Air Wing	-	-	34	33	36
Intelligence Center	-	-	8	9	10
Compliance Investigators					
On-Board	192	195	208	191	208
Domestic	186	188	194	181	199
Foreign	-	-	-	2	2
Headquarters	6	7	14	8	7
DEA Offices					
Regional Offices	19	16	9	9	9
Domestic	13	12	5	5	5
Foreign	6	4	4	4	4
District/Resident	150	158	167	162	162
Domestic	99	102	115	112	113
Foreign	51	56	52	50	49

# ORGANIZATION AND TRAINING DATA DOMESTIC AND FOREIGN ENFORCEMENT TRAINING

## DESCRIPTION OF DATA:

DEA provides entry level training for all of its own Special Agents, Compliance Investigators, and Intelligence Analysts. In addition, it provides advanced and special skills training in such programs as Conspiracy, Financial Investigations, Drug Intelligence Collection and In-Service Individualized Testing and Training.

DEA conducts training for municipal, county, state, and foreign enforcement officers, both in the field and at Headquarters. DEA offers an eight week academy program for domestic officials and a five week program for foreign officials. The agency also conducts two week law enforcement training schools both in Washington, D. C. and in locations throughout the U. S. and overseas. These schools provide law enforcement officers with the basic knowledge required to conduct narcotics and dangerous drug investigations.

In addition, programs in drug intelligence analysis, conspiracy investigations and other special programs are conducted for state, local, and other Federal officers. A number of institution building programs such as joint enforcement, criminal information research, and methods of instruction schools are also conducted for foreign officials.

# ORGANIZATION AND TRAINING DATA DOMESTIC AND FOREIGN ENFORCEMENT TRAINING

	FY77	FY78	FY79	FY80
Drug Enforcement Admin.				
Special Agents	36	31	66	37
Compliance Investigators	16	0	30	29
Intelligence Analysts	91	73	82	85
State and Local				
Eight Week Academies	68	90	43	46
Two Week Schools	3,183	3,427	3,176	2,681
Chemist Seminars	89	47	46	61
International				
Advanced Schools (D.C.)	138	153	99	27
In-Country Schools	955	1,238	987	404
Executives	31	74	23	2

	CY76	CY77	CY78	CY79	30 CY80
Drug Enforcement Admin.					
Special Agents	0	36	63	34	37
Compliance Investigators	0	16	30	30	24
Intelligence Analysts	69	101	50	82	85
State and Local					
Eight Week Academies	101	93	41	65	24
Two Week Schools	3,186	3,071	3,253	3,132	2,072
Chemist Seminars	83	65	67	41	33
International					
Advanced Schools (D.C.)	119	129	144	98	0
In-Country Schools	923	1,159	1,052	866	479
Executives	46	35	62	22	1



**END**