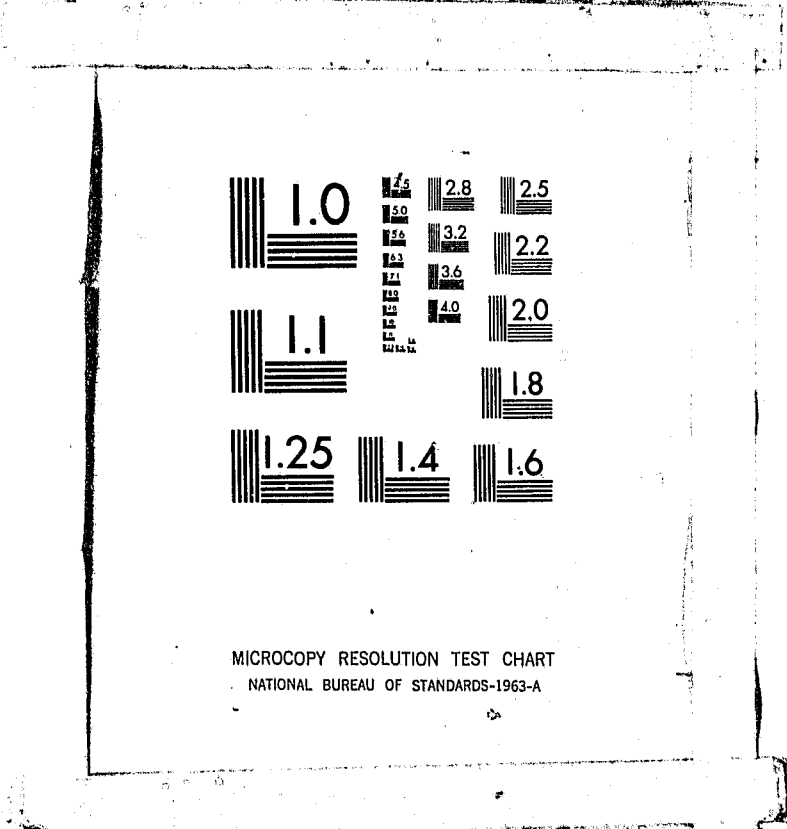


CR sent  
1-8-82

National Criminal Justice Reference Service



This microfiche was produced from documents received for inclusion in the NCJRS data base. Since NCJRS cannot exercise control over the physical condition of the documents submitted, the individual frame quality will vary. The resolution chart on this frame may be used to evaluate the document quality.



MICROCOPY RESOLUTION TEST CHART  
NATIONAL BUREAU OF STANDARDS-1963-A

Microfilming procedures used to create this fiche comply with the standards set forth in 41CFR 101-11.504.

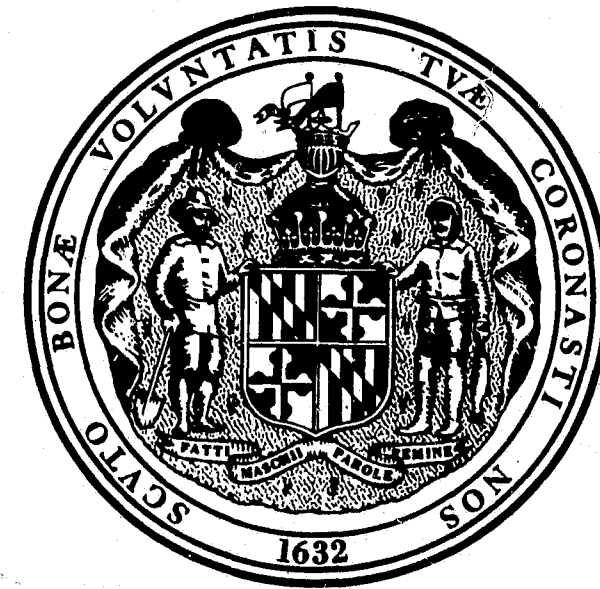
Points of view or opinions stated in this document are those of the author(s) and do not represent the official position or policies of the U. S. Department of Justice.

National Institute of Justice  
United States Department of Justice  
Washington, D.C. 20531

DATE FILMED  
12/28/81

MARYLAND DEPARTMENT OF HEALTH  
AND MENTAL HYGIENE

JUVENILE SERVICES  
ADMINISTRATION  
ANNUAL REPORT



1980  
FISCAL YEAR

79422

STATE OF MARYLAND  
DEPARTMENT OF  
HEALTH AND MENTAL HYGIENE

Charles R. Buck, Jr., Sc.D., Secretary

Annual Statistical Report  
Fiscal Year 1980  
JUVENILE SERVICES ADMINISTRATION  
Rex C. Smith, Director

U.S. Department of Justice 79422  
National Institute of Justice

This document has been reproduced exactly as received from the person or organization originating it. Points of view or opinions stated in this document are those of the authors and do not necessarily represent the official position or policies of the National Institute of Justice.

Permission to reproduce this copyrighted material has been granted by  
Joseph M. Szuleksi/Juvenile Service  
Administration

to the National Criminal Justice Reference Service (NCJRS).

Further reproduction outside of the NCJRS system requires permission of the copyright owner.

Prepared by  
Division of Special Services  
-Research and Analysis-

NCJRS  
JUN 23 1981  
ACQUISITIONS



JUVENILE SERVICES ADMINISTRATION  
DEPARTMENT OF HEALTH AND MENTAL HYGIENE  
201 WEST PRESTON STREET • BALTIMORE, MARYLAND 21201 • Area Code 301 383-3773

Charles R. Buck, Jr., Sc.D.  
Secretary

Rex C. Smith  
Director

April 21, 1981

THE HONORABLE HARRY HUGHES  
GOVERNOR FOR THE STATE OF MARYLAND

THE HONORABLE CHARLES R. BUCK, JR., Sc. D.  
SECRETARY, DEPARTMENT OF HEALTH AND MENTAL HYGIENE

It is my privilege to present the Annual Report of the Juvenile Services Administration for fiscal year 1980.

During the past year, the Juvenile Services Administration continued to enhance the quality of its fundamental components of delinquency prevention, court, community and institutional services. In addition, this administration has continued development and implementation of a number of promising innovative programs including victim assistance, foster grandparent and structured shelter care programs.

With the prospect of tighter budgetary restrictions, the Juvenile Services Administration has recognized the need to closely monitor and evaluate its services in order to provide the highest quality of treatment and rehabilitation through most effective utilization of its resources. This past year the administration has conducted an in depth study of intake screening decision making, a vital, integral element in the juvenile justice process. It has also completed an investigation of the utilization of its group home resources in order to develop and maintain appropriate residential placements in the community. This administration continued its efforts to develop a program of interagency services and maintain interagency cooperation through a networking project which has been well supported both at department and cabinet levels within and outside this

administration. Other noteworthy accomplishments during the year included the development of a management plan to provide assistance in determining more efficient distribution of line staff and the implementation of a formalized management accountability system.

With the continuing support of the Executive Office of the Governor, the Department of Health and Mental Hygiene and other groups in both the public and private sectors, this administration will continue making every effort to provide the level of services needed by the youth in our communities. We express our deep appreciation to all whose assistance has aided in our effort to provide such services for troubled youth.

REX C. SMITH  
Director

TABLE OF CONTENTS

Table of Organization, Juvenile Services Administration..... 1  
 Definition of Terms..... 2  
 Maryland Juvenile Services Administration Flow Chart, Fiscal 1980..... 3  
 Highlights: Juvenile Court Services..... 9  
           Community Services.....37  
           Institutional Services.....51

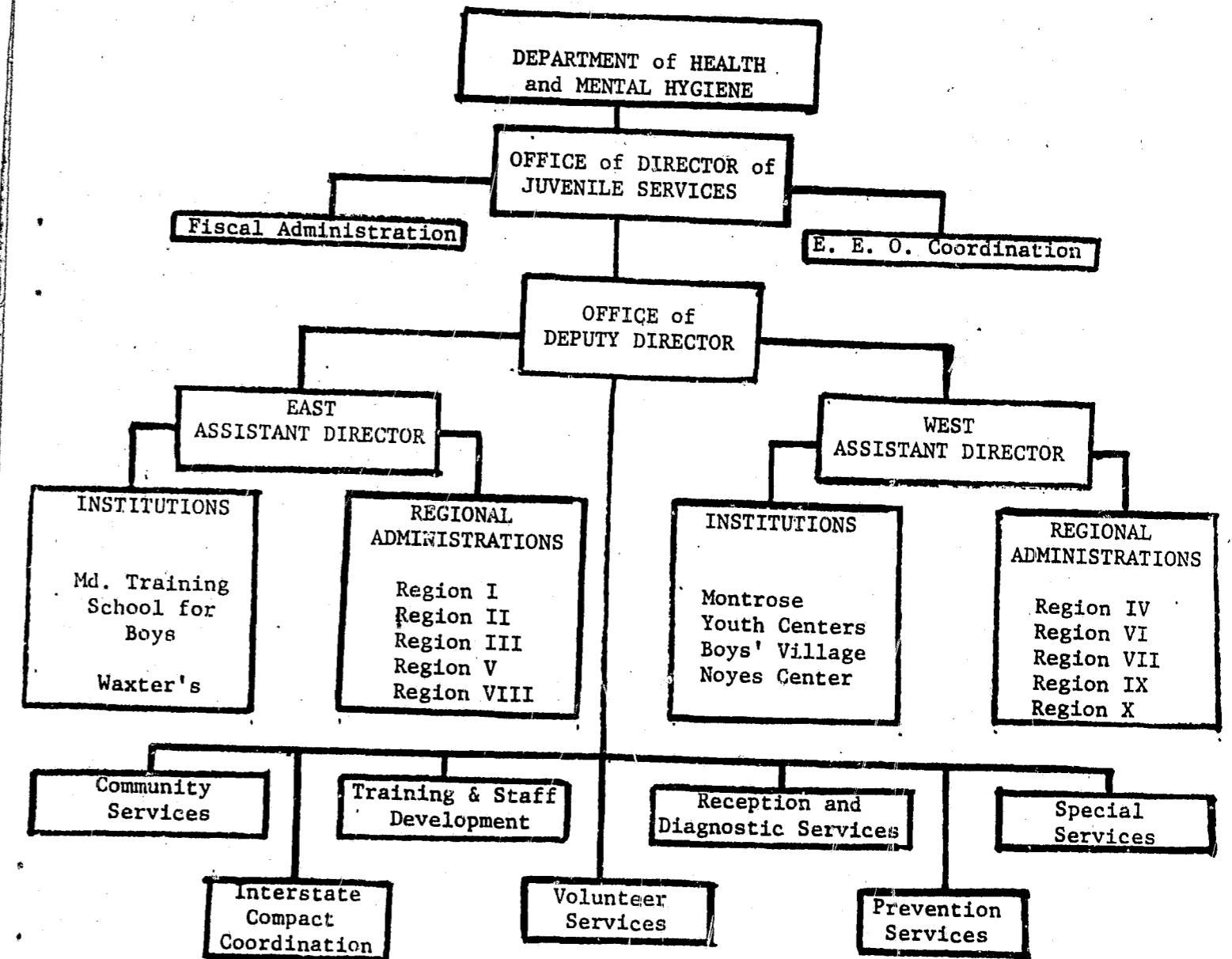
STATISTICS

Budget Expenditures  
 Figure 1: Maryland Juvenile Services Administration Fiscal 1980 Budget..... 7  
 Table 1: Maryland Juvenile Services Administration, Summary of Budget Expenditures by Major Program, Fiscal 1971-1980..... 8

Juvenile Court Services  
 Table 2: Summary of Juvenile Probation and Court Services Expenditures and Services Rendered, Fiscal 1971-1980.....15  
 Table 3: Total Cases Handled by the Juvenile Services Administration by County and Region; Formal, Informal, Change in Disposition and Disapproved/Closed at Intake Cases, Fiscal 1971-1980.....16  
 Table 4: Formal Juvenile Court Dispositions by County and Region, Fiscal 1971-1980.....17  
 Table 5: Total Number of Cases Handled Informally by the Juvenile Services Administration by County and Region, Fiscal 1971-1980.....18  
 Table 6: Total Number of Juvenile Cases Disapproved or Closed at Intake by County and Region, Fiscal 1971-1980.....19  
 Table 7: Total Offense Case Rate and Total Delinquent Case Rate per 1,000 Juveniles by County and Region, Fiscal 1980.....20  
 Table 8: Disposition by County and Region, Fiscal 1980.....21  
 Table 9: Manner of Handling Cases by County, Region and Type of Offense, Fiscal 1980.....23  
 Table 10: Manner of Handling Cases by County, Region and Sex, Fiscal 1980.....24  
 Table 11: Manner of Handling Cases by County, Region and Race, Fiscal 1980.....25  
 Table 12: Total Cases Handled by the Juvenile Services Administration by County, Region and Source of Referral, Fiscal 1980.....26  
 Table 13: Total Cases Handled by the Juvenile Services Administration by County, Region and Age, Fiscal 1980.....27  
 Table 14: Total Cases Handled by the Juvenile Services Administration by County, Region and Major Reason Referred, Fiscal 1980.....28  
 Table 15: Total Cases Handled by the Juvenile Services Administration by Major Reason and Age at Time of Referral, Fiscal 1980.....30  
 Table 16: Formal Cases Handled by the Juvenile Services Administration by Major Reason and Disposition, Fiscal 1980.....31  
 Table 17: Comparison of the Number of Cases Handled by the Maryland Juvenile Services Administration by Major Reason for Referral, Fiscal 1979-1980....33  
 Table 18: Total Cases Handled by the Maryland Juvenile Services Administration by County and Parental Status, Fiscal 1980.....34  
 Table 19: Total Cases Handled by the Maryland Juvenile Services Administration by County and Type of Guardian, Fiscal 1980.....35  
 Table 20: Part I Offenses vs. Other Delinquent Offenses, Fiscal 1976-1980.....36  
 Table 21: Sources of Referral of Children in Need of Supervision, Fiscal 1976-1980...36

Community Services	
Table 22:	Community and Residential Expenditures, Fiscal 1976-1980.....40
Table 23:	Community Residential Placements, Number of Juveniles Served, Fiscal 1971-1980.....41
Table 24:	Residential and Emergency Placements by Sex and County, Fiscal 1980.....42
Table 24A:	Private Residential Placements by Type of Services and County, Fiscal 1980.....43
Table 25:	Residential and Emergency Placements by Race and County, Fiscal 1980.....44
Table 26:	Arthur G. Murphy Youth Service Center Admissions, Fiscal 1980.....45
Table 27:	Placements in Good Shepherd Center, Maryland Youth Residence Center, and State-Owned Group Homes, Fiscal 1980.....45
Table 28:	Clients Served by Type of Service at Youth Service Bureaus, Fiscal 1980....46
Table 29:	Demographic Characteristics of Clients Served by Youth Service Bureaus, Fiscal 1980.....46
Table 30:	Youth Served by Maryland Runaway Programs, Fiscal 1980.....47
Table 31:	Total Counseled Cases Served by Youth Diversion Programs in Baltimore City by Race, Sex, and Offenses, Fiscal 1980.....48
Table 32:	New Direction: Community Diversion of Youthful Offenders Program, Fiscal 1980.....49
Table 33:	Community Detention Programs.....50
Institutional Services	
Table 34:	Maryland Juvenile Services Administration, Summary of Institution Expenditures, Fiscal 1971-1980.....55
Table 35:	Summary of Institution Admissions, Fiscal 1971-1980.....55
Table 36:	Admissions to Maryland's Juvenile Institutions, Fiscal Year Comparisons, 1979-1980.....56
Table 37:	Admissions to Training Schools and Youth Centers by County of Residence and Admitting Court, Fiscal 1980.....57
Table 38:	Admissions to Maryland's Detention Facilities by County of Residence and County of Admitting Court, Fiscal 1980.....58
Table 39:	Commitments vs. Detentions at Training Schools by County of Residence and County of Admitting Court, Fiscal 1980.....59
Table 40:	Admissions to Maryland's Juvenile Institutions by Facility and Offense, Fiscal 1980.....60
Table 41:	Commitments to Maryland's Training Schools and Youth Centers by Age and Race, Fiscal 1980.....61
Table 42:	Average Length of Stay of Commitments at Maryland's Training Schools and Youth Centers, Fiscal 1980.....62
Table 43:	Average Length of Stay for Detentions in Maryland's Juvenile Institutions, Fiscal 1980.....62
Table 44:	Detentions at Holdover Facilities by County of Residence and Detaining Court, Fiscal 1980.....63
Federal Grants	
Table 45:	Federal Grants in Operation During Fiscal 1980.....66

ORGANIZATION CHART  
JUVENILE SERVICES ADMINISTRATION



Total Staff: 1,439

**Definition of Terms**

**THE UNIT OF COUNT** is a case referred to the Juvenile Services Administration. Such a case is counted each time a child is referred during the year on a new referral.

**COURT** means the circuit court of a county or Baltimore City sitting as the juvenile court. In Montgomery County, it means the District Court sitting as a Juvenile Court.

**DELINQUENCY CASES** are those cases referred to the Administration for acts defined in the statutes of the State of Maryland as the violation of a State law or municipal ordinance by persons who have not reached their 18th birthday.

**CHILDREN IN NEED OF SUPERVISION (CINS)** are those cases referred to the Juvenile Services Administration involving children who are in need of guidance, treatment, or rehabilitation because they are habitually truant; habitually disobedient, ungovernable or beyond control; deport themselves so as to injure or endanger themselves or others; or commit an offense applicable only to children.

**CHILDREN IN NEED OF ASSISTANCE (CINA)** are those cases referred to the Juvenile Services Administration which involve children who need the assistance of the court because of dependency, neglect or mental handicaps.

**DEPENDENCY CASES** are those cases involving a child who has been deprived of adequate support or care by reason of the death, continued absence from the home, or physical, mental or emotional incapacity or disability of his parent, guardian or other custodian.

**NEGLECT CASES** are those cases involving a child who requires the aid of the court and either has been abandoned or deserted by his parents, guardian or other custodian; whose parent, guardian or other custodian does not adequately care for him although financially able, or offered the financial means to do so; or who suffers or is likely to suffer serious harm from an improper home environment or guardianship, including the lack of moral supervision or guidance, of his parents, guardian or custodian.

**MENTALLY HANDICAPPED CASES** are those cases in which a mentally retarded or

mentally ill child is brought into court for the determination of proper care.

**SPECIAL PROCEEDINGS** includes guardianship or custody cases or application for permission to marry, enlist in the armed forces, etc.

**MANNER OF HANDLING CASES** is classified as FORMAL, INFORMAL, DISAPPROVED OR CLOSED AT INTAKE.

**DISAPPROVED CASES** are those referrals which are determined as lacking legal sufficiency.

**CLOSED AT INTAKE CASES** are those referrals which are resolved by an Intake Officer through minimal involvement of staff when the facts and circumstances of the offense and the child's background indicate that no supervision or further counselling from Juvenile Services or intervention by the court is necessary or desirable for effecting a positive adjustment by the child.

**INFORMAL ADJUSTMENT** involves those referrals which are resolved by an Intake Officer by giving voluntary informal supervision for up to 90 days and/or referral to another agency when it appears that the child and his/her parent need assistance in preventing further violations of the law, but will not require nor benefit from judicial proceedings.

**FORMAL CASES** are those cases in which a petition has been authorized and filed requiring formal court action.

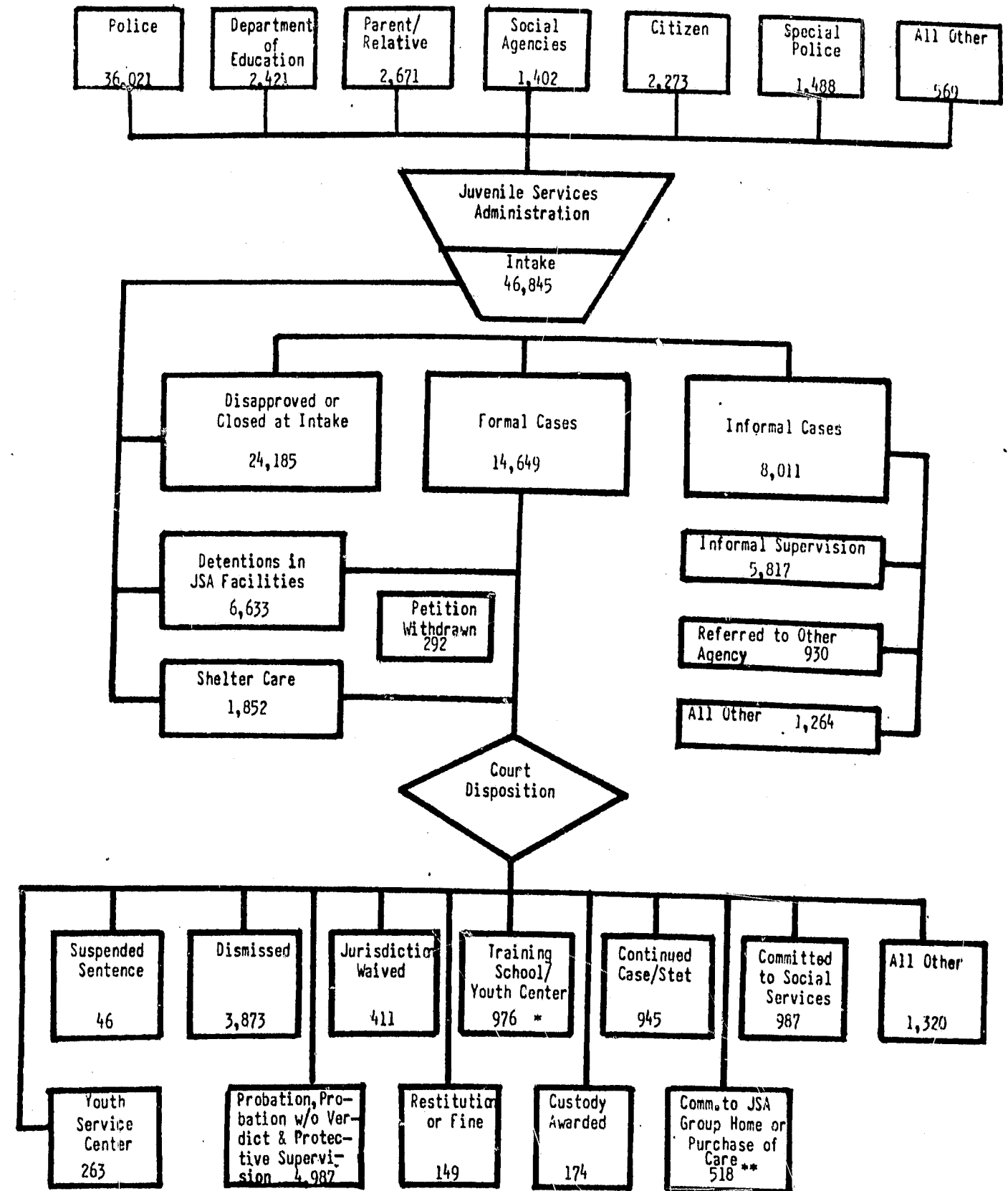
**INSTITUTIONAL ADMISSIONS** include both commitments and detentions. Such an admission is counted each time a child is either detained or committed to a facility during the year.

**COMMITMENT** means the transfer of legal custody.

**DETENTION** means the temporary care of children who, pending court disposition, require secure custody for the protection of themselves and/or the community, in physically restricting facilities.

**SHELTER CARE** means the temporary care of children in physically unrestricting facilities, pending court disposition.

MARYLAND JUVENILE SERVICES ADMINISTRATION  
FLOW CHART OF CASE REFERRALS  
FISCAL 1980



\* This total does not include 476 cases which were committed during FY 1980 but who did not appear on obtained court record data.

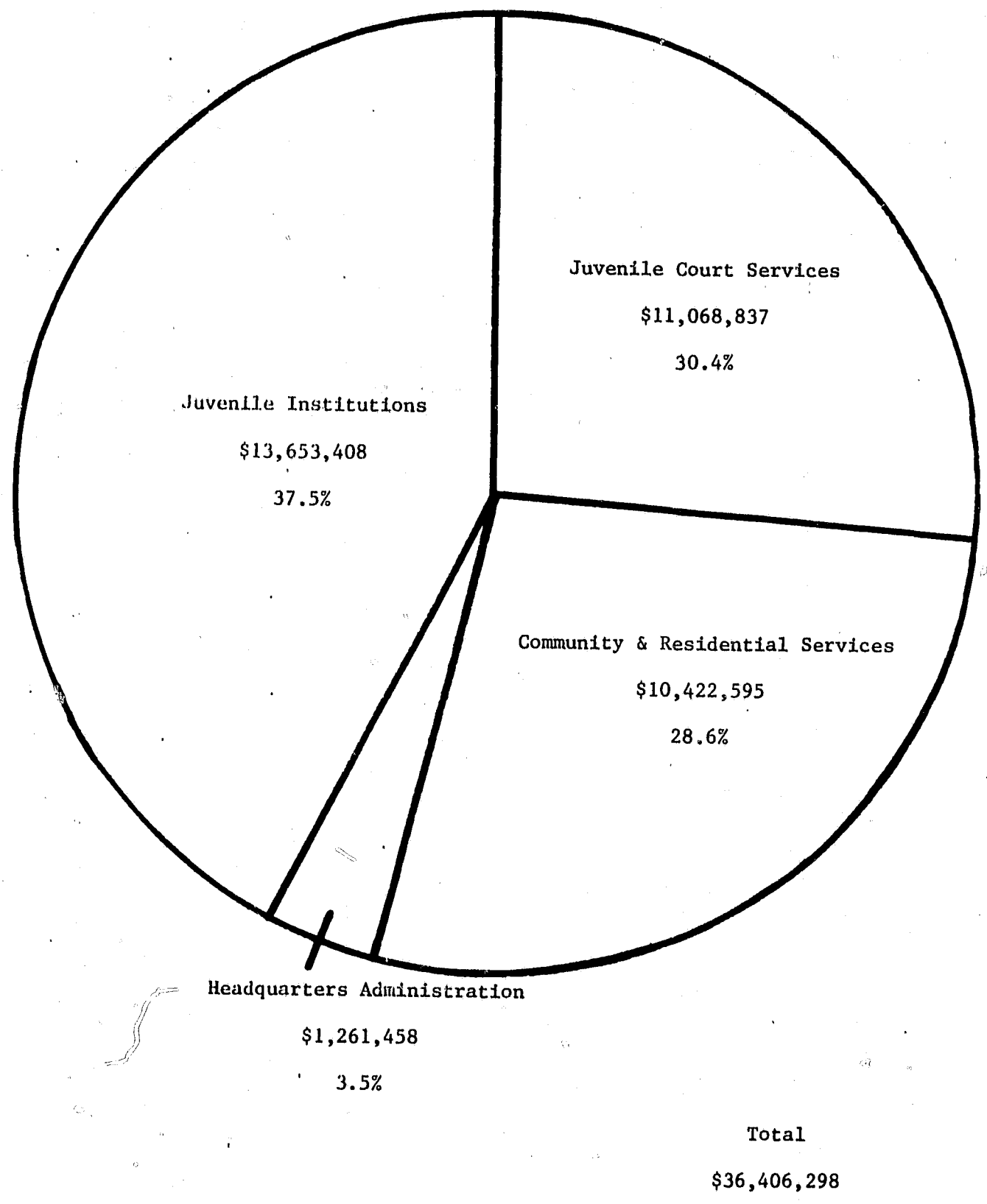
\*\* This total was obtained from court record data which do not accurately reflect admissions. See section on community services for actual figures.



STATISTICS

Preceding page blank

FIGURE 1  
MARYLAND JUVENILE SERVICES ADMINISTRATION  
FISCAL 1980 BUDGET



Preceding page blank

TABLE 1  
 MARYLAND JUVENILE SERVICES ADMINISTRATION  
 SUMMARY OF BUDGET EXPENDITURES BY MAJOR PROGRAM  
 FISCAL 1980

Fiscal Year	Juvenile Institutions	Juvenile Court Services	Community and Residential Services	Administration Headquarters*	Total
1971	10,222,861	3,755,940	1,439,488	598,629	16,016,908
1972	11,364,651	4,793,753	2,315,750	805,298	19,279,452
1973	11,330,290	4,916,722	3,075,350	740,626	20,062,988
1974	10,644,860	5,112,801	4,260,249	1,081,863	21,099,773
1975	10,512,767	6,123,325	6,147,085	1,097,982	23,881,159
1976	11,568,711	7,095,563	7,524,331	870,789	27,059,394
1977	12,147,884	7,957,519	8,047,093	927,398	29,079,894
1978	13,397,585	8,787,924	8,776,442	1,035,755	31,997,706
1979	13,642,548	9,454,009	9,058,370	1,137,621	33,292,548
1980	13,653,408	11,068,837	10,422,595	1,261,458	36,406,298

\* The decrease in Administration Headquarters' budget from Fiscal 1975 to 1976 was due to the assimilation of JSA within the Department of Health and Mental Hygiene.

JUVENILE  
COURT  
SERVICES

## HIGHLIGHTS OF JUVENILE COURT SERVICES

### Manner of Handling Cases

When a case is referred to Maryland's Juvenile Services Administration, an inquiry is conducted by one of the administration's intake units to determine whether the case should be disapproved because of legal insufficiency, closed at intake, handled informally by the intake officer, or referred for formal court action.

Of the 46,845 juvenile cases that were processed by the Juvenile Services Administration during fiscal 1980, 14,649 (31%) were handled formally, 8,011 (17%) were handled informally, 2,947 (6%) were disapproved, and 21,238 (45%) were closed at intake. The overall number of cases increased 6% during fiscal 1980. The largest increase was in informal cases with the fiscal 1980 figure of 8,011 exceeding the fiscal 1979 figure by 2,309 cases--an increase of 40%. Disapproved cases increased by 26%, and closed at intake cases increased by 1%. Formal cases declined by 3% during fiscal 1980.

### Source of Referral

Police referrals accounted for 36,021 cases during fiscal 1980, an increase of 2,386 cases or 7% over figures for fiscal 1979. Referrals from other sources, overall, remained nearly constant with the fiscal 1979 figure. Parents or relatives referred 2,671 cases during fiscal 80; the Department of Education, 2,421 cases; citizens, 2,273 cases; special police, 1,488 cases; and, social agencies, 1,402 cases. The remaining 569 referrals were accounted for by other sources.

### Juvenile Court Trends

The downward spiral in overall referrals to the Juvenile Services Administration, which began in fiscal 1977, ended during fiscal 1980. The increase of 2,736 cases may have signaled a new trend or, alternatively, may have indicated some changes in reporting habits or procedures. Case projections based on population estimates have suggested that the downward spiral would level off during the decade of the 1980's.

While most referrals continue to occur in urban and suburban areas, Maryland's Eastern Shore experienced one of the most significant increases in cases during fiscal 1980--fully 28% above the fiscal 1979 figures.

Baltimore City continued to account for more referrals than any other jurisdiction. During fiscal 1980, 31% of the state's referrals occurred in Baltimore City. Prince George's County had the next highest representation with 19% of the state's referrals. Baltimore County accounted for 14% of the state's referrals, followed by Anne Arundel County, 8%; and Montgomery County, approximately 5%.

### Disposition

Of the 14,649 cases handled formally, 30% were "withdrawn," "dismissed," or "warned, adjusted, or counselled." During fiscal 1980, 4,987 cases (34%) were placed on "probation," "probation without verdict," or "protective supervision." This represented a slight decline from the 5,165 cases disposed of in this manner during fiscal 1979.



During fiscal 1980, 1,161 cases (8%) had dispositions of "custody awarded" or "committed to the social services administration." Another 481 cases (3%) were committed to "purchase of care" or "purchase of services." The number of reported court cases with a disposition of commitment to a training school or youth center was 976. However, the actual number of commitments to these facilities is under reported using court records. The actual number of commitments during fiscal 1980 was 1,452 and is reported in the section of this report entitled "Institutional Services."

#### Juvenile Case Rates

The juvenile case rate for Maryland during fiscal 1980 was 50 cases per 1,000 juveniles in the age range of five through seventeen. This represents an increase of four cases per 1,000 juveniles over the rate reported for fiscal 1979 and mirrors the increase in total cases. As already mentioned, whether this increase signals a new trend or is a reflection of minor changes in reporting procedures is unknown.

The case rate ranged from a low of 16 in Montgomery County to a high of 145 per 1,000 juveniles in Worcester County. This latter figure is indicative of the summer "Ocean City phenomenon" and does not indicate high delinquent activity among Worcester County residents. Baltimore City, the next highest jurisdiction in case rate, displayed a rate of 86 cases per 1,000 juveniles, followed by Calvert County at 78 per 1,000 juveniles, Charles County at 59 per 1,000 juveniles, and Prince George's with 57 cases per 1,000 juveniles. Worcester County, Prince George's County and Calvert County all displayed substantial increases in juvenile case rates over the figures for fiscal 1979.

#### Major Reason for Referral: Delinquency

During fiscal 1980, 40,917 referrals, 87% of the total cases processed by the Juvenile Services Administration, involved delinquent offenses. The figure for fiscal 1980 exceeded the figure for fiscal 1979 by 3,260 referrals, an increase of 9 percent. The offense category with the most referrals was "larceny" with 5,650 cases processed; this represented an increase of 11% over "larceny" cases reported during fiscal 1979. "Assault" was the second most frequent reason for referral with 5,374 cases during fiscal 1980. "Burglary/breaking and entering" with 5,374 referrals closely followed "assault" in number of cases. "Shoplifting" with 4,934 cases and "narcotics violation" with 3,382 cases were the fourth and fifth most frequent major reasons for referral during fiscal 1980. "Shoplifting" displayed an especially large increase in cases--fully 21% greater than the fiscal 1979 figure. "Auto theft-unauthorized use," with 1,778 referrals, showed an increase of 23% over the 1,444 referrals recorded during fiscal 1979.

#### CINS

During fiscal 1980, a total of 4,234 referrals were made which involved "children in need of supervision" (CINS). This represented a decrease of 12% from the figure for fiscal 1979, i.e., 4,797 cases. "Ungovernable" behavior was involved in 1,902 cases, "runaway" behavior in 1,511 cases, and "truancy" in 821 cases. Compared to fiscal 1979, all categories of CINS behavior displayed declines in the number of referrals during fiscal 1980.

During fiscal 1980, the tendency to send CINS cases on to court showed further substantial declines. While CINS cases handled formally decreased by nearly 50%, CINS cases handled informally increased by nearly 29%. According to court records, during fiscal 1980, 61% of the CINS referrals were closed at intake, 6% were disapproved, 24% were handled informally, and 8% were handled formally.

#### CINA

A total of 1,654 referrals involved "children in need of assistance" (CINA) during fiscal 1980, an increase of 44 cases over the figure for fiscal 1979 of 1,610. A total of 1,468 cases or 89% were sent on to court during fiscal 1980, nearly identical to the 90% figure for formalized CINA cases during fiscal 1979. "Dependency" was the largest category for CINA referrals with 811 cases, followed by "neglect" with 416 cases, "dependency and neglect" with 377 cases, and "mentally handicapped" with 50 cases.

#### Sex Ratio

During fiscal 1980, 36,892 referrals involved males and 9,953 involved females. In percentage terms, 79% of the referrals involved males, identical to the percentage of referrals involving males during fiscal 1979.

A total of 12,269 cases involving males were formalized representing 33% of all cases involving males. For females, 2,380 cases were sent on to court, 24% of all cases involving females. During fiscal 80, 16% of the cases involving males were handled informally, 6% were disapproved, and 44% were closed. For females during fiscal 80, 19% of the cases were handled informally, 6% were disapproved, and 51% were closed.

#### Race

During fiscal 80, 26,467 referrals, 56% of the total, involved white youths; a total of 20,111 referrals, 43% of the total, involved black youths; and the remaining 267 referrals, 1% of the total, involved youths of "other" races. These figures, in percentage terms, are approximately the same as reported in previous years. For white youths, 30% of the referrals were handled formally; 17% informally; 3% disapproved; and 47% were closed at intake. For black youths, 32% of the referrals were handled formally; 17%, informally; 7% disapproved; and 44% were closed at intake. During fiscal 80, there was thus a fairly close statistical correspondence of case handling for white and black youths.

#### Age of Juvenile

The average (mean) age of all referrals was 15.3 years. The greatest portion of referrals came from the fifteen through seventeen age group which accounted for 63% of the total cases referred during fiscal 80. Sixteen year olds, alone, accounted for 10,152 referrals, followed by seventeen year olds with 9,781 referrals, and fifteen year olds with 9,489 referrals. The number of cases, as usual, increased proportionately with age through the sixteen year old group; at age seventeen, there was a slight decline in cases, again an expected finding.

#### Age by Type of Case

Of the 40,917 referrals involving delinquent acts, 65% involved the fifteen through seventeen age group. Youths in the age group of fourteen through sixteen accounted for 67% of the referrals involving CINS behavior. Approximately 50% of CINA referrals were accounted for by youths under twelve years of age. In summary, those youths committing delinquent acts are on the average slightly older than those involved in CINS behavior, who, in turn, are older than the majority of youths referred as CINA. The relationship between type of referral and age is consistent with findings from data supplied during previous years.

#### Parental Status

Information on parental status was supplied in 81% of the cases referred during fiscal 80. Parents were living together in 46% of the cases for which information was available, were separated in 25% of those reported cases, and were divorced in 15% of these cases. Either the mother or father was deceased in 5% of the cases for which information was available.

#### Type of Guardian

Information on the type of guardian, which parallels to a great extent the information on parental status, was reported in 87% of the total referrals. Both parents served as guardians in 42% of the cases for which information was provided. The mother served as only guardian in 40% of the cases. Fathers served as the only guardian in 6% of the cases.

TABLE 2

#### SUMMARY OF JUVENILE PROBATION AND COURT SERVICES EXPENDITURES AND SERVICES RENDERED FISCAL 1971-1980

Fiscal Year	Budget Expenditures	Juvenile Cases Disposed*	Probation, Prob. w/o Verdict & Protective Supv. Cases	Aftercare Cases
1971	\$ 3,755,940	32,703	5,226	1,920
1972	4,793,753	37,242	6,019	1,888
1973	4,916,722	41,949	5,638	1,800
1974	5,112,801	47,905	5,064	1,409
1975	6,123,325	57,162	6,468	1,601
1976	7,095,563	58,044	7,107	1,621
1977	7,957,519	50,702	6,841	1,588
1978	8,787,924	47,286	6,206	1,396
1979	9,454,009	44,109	5,165	1,298
1980	11,068,837	46,845	4,987	1,209

\* Includes Formal, Informal, Change in Disposition and Disapproved/Closed at Intake Cases.

TABLE 3

TOTAL CASES HANDLED BY THE JUVENILE SERVICES ADMINISTRATION BY COUNTY AND REGION\*

FISCAL YEARS 1971-1980

REGIONS	1971		1972		1973		1974		1975		1976		1977		1978		1979		1980		% Change 79-80
	N	%	N	%	N	%	N	%	N	%	N	%	N	%	N	%	N	%	N	%	
1. DORCHESTER	209	.6	199	.5	308	.7	317	.7	300	.5	212	.4	197	.4	216	.5	233	.5	284	.6	+21.9
SOMERSET	120	.4	118	.3	148	.4	123	.3	144	.3	152	.3	100	.2	91	.2	120	.3	121	.3	+ .8
WICOMCO	233	.7	288	.8	338	.8	437	.9	413	.7	320	.5	302	.6	190	.4	255	.6	434	.9	+70.2
WORCESTER	818	2.5	694	1.9	610	1.4	656	1.4	750	1.3	816	1.4	790	1.6	622	1.3	561	1.3	848	1.8	+51.2
2. CAROLINE	123	.4	129	.3	108	.2	150	.3	206	.4	146	.2	134	.3	167	.4	228	.5	229	.5	+ .4
CECIL	428	1.3	483	1.3	533	1.3	481	1.0	472	.8	548	.9	502	1.0	482	1.0	583	1.3	744	1.6	+27.6
KENT	128	.4	139	.4	151	.4	214	.4	210	.4	146	.2	203	.4	137	.3	154	.3	164	.4	+ 6.5
QUEEN ANNE'S	245	.7	163	.4	163	.4	181	.4	129	.2	154	.3	155	.3	127	.3	181	.4	180	.4	- .6
TALBOT	181	.5	144	.4	175	.4	195	.4	254	.4	233	.4	224	.4	220	.5	242	.5	271	.6	+12.0
3. BALTIMORE	3,521	10.8	3,709	10.0	4,373	10.4	5,531	11.6	6,838	12.0	5,229	9.0	5,024	9.9	5,068	10.7	5,472	12.4	6,554	14.0	+19.8
HARFORD	916	2.8	1,058	2.8	904	2.2	915	1.9	998	1.7	1,005	1.7	1,237	2.4	1,193	2.5	1,342	3.0	1,419	3.0	+ 5.7
4. ALLEGANY	422	1.3	380	1.0	464	1.1	516	1.1	560	1.0	458	.8	437	.9	434	1.0	476	1.1	452	1.0	- 5.0
GARRETT	120	.4	110	.3	135	.3	108	.2	115	.2	161	.3	161	.3	138	.3	130	.3	213	.5	+63.8
WASHINGTON	511	1.6	471	1.3	750	1.8	691	1.4	842	1.5	850	1.5	843	1.7	764	1.6	622	1.4	650	1.4	+ 4.5
5. ANNE ARUNDEL	2,618	8.0	2,408	6.5	2,815	6.7	3,706	7.7	5,296	9.3	5,048	8.7	5,035	9.9	4,947	10.4	4,513	10.2	3,820	8.2	-15.4
6. MONTGOMERY	2,950	9.0	3,677	9.8	3,031	7.2	3,532	7.4	5,253	9.2	4,399	7.6	3,174	6.3	2,763	5.8	2,810	6.4	2,157	4.6	-23.2
7. PRINCE GEORGE'S	5,977	18.3	6,823	18.3	6,717	16.0	8,592	17.9	9,320	16.3	9,074	15.6	8,786	17.3	8,353	17.6	6,850	15.5	8,789	18.8	+28.3
8. BALTIMORE CITY	11,384	34.8	14,076	37.8	17,703	42.2	17,769	37.1	20,690	36.2	24,878	42.9	18,859	37.2	16,777	35.4	14,495	32.9	14,644	31.3	+ 1.0
9. CALVERT	191	.6	213	.6	248	.6	284	.6	433	.8	310	.5	377	.7	425	.9	478	1.1	615	1.3	+28.7
CHARLES	391	1.2	582	1.6	531	1.3	953	2.0	987	1.7	960	1.7	953	1.9	1,089	2.3	1,304	3.0	1,134	2.4	-13.0
ST. MARY'S	192	.6	281	.8	379	.9	456	1.0	541	.9	501	.9	623	1.2	693	1.5	607	1.4	585	1.2	- 3.6
10. CARROLL	372	1.1	231	.6	330	.8	549	1.1	669	1.2	621	1.1	742	1.5	636	1.3	740	1.7	696	1.5	- 5.9
FREDERICK	362	1.1	450	1.2	567	1.4	760	1.6	800	1.4	832	1.4	860	1.7	877	1.9	882	2.0	919	2.0	+ 4.2
HOWARD	301	.9	416	1.1	468	1.1	780	1.6	942	1.6	991	1.7	984	1.9	877	1.9	831	1.9	923	2.0	+11.1
STATE	32,703	100.0	37,242	100.0	41,949	100.0	47,905	100.0	57,162	100.0	58,044	100.0	50,702	100.0	47,286	100.0	44,109	100.0	46,845	100.0	+ 6.2

\* Percentages pertain to each jurisdiction's proportion of the state's total cases.

TABLE 4  
 FORMAL JUVENILE COURT DISPOSITIONS BY COUNTY AND REGION\*  
 FISCAL YEARS 1971-1980

REGIONS	1971		1972		1973		1974		1975		1976		1977		1978		1979		1980		% Change 79-80
	N	%	N	%	N	%	N	%	N	%	N	%	N	%	N	%	N	%	N	%	
1. DORCHESTER SOMERSET WICOMECO WORCESTER	101 74 158 102	.6 .5 1.0 .7	86 57 201 124	.5 .3 1.1 .7	140 81 243 108	.7 .4 1.3 .6	176 73 266 90	.9 .4 1.4 .5	142 59 214 144	.7 .3 1.0 .7	106 91 167 106	.5 .4 .7 .5	99 50 236 125	.5 .3 1.2 .6	83 57 129 101	.5 .3 .7 .6	90 49 109 90	.6 .3 .7 .6	114 75 119 105	.8 .5 .8 .7	+26.7 +53.1 +9.2 +16.7
2. CAROLINE CECIL KENT QUEEN ANNE'S TALBOT	61 160 77 178 87	.4 1.0 .5 1.1 .6	64 141 63 106 73	.3 .8 .3 .6 .4	52 148 87 113 61	.3 .8 .4 .6 .3	46 163 87 105 91	.2 .9 .5 .6 .5	50 121 73 72 61	.2 .6 .3 .3 .2	39 169 74 50 55	.2 .7 .3 .2 .2	61 171 98 71 92	.3 .9 .5 .4 .5	67 168 78 45 98	.4 1.0 .4 .3 .6	64 146 67 52 73	.4 1.0 .4 .3 .5	68 169 67 50 113	.5 1.2 .5 .3 .8	+6.3 +15.8 0.0 -0.4 +54.8
3. BALTIMORE HARFORD	1,362 340	8.8 2.2	1,661 347	9.0 1.9	1,513 313	7.9 1.6	1,515 374	8.1 2.0	1,751 404	8.3 1.9	1,261 418	5.4 1.8	1,280 489	6.5 2.5	1,238 409	7.0 2.3	1,445 441	9.6 2.9	1,953 460	13.3 3.1	+35.2 +4.3
4. ALLEGANY GARRETT WASHINGTON	398 91 491	2.6 .6 3.2	346 77 419	1.9 .4 2.3	333 70 513	1.7 .4 2.7	391 65 544	2.1 .3 2.9	463 83 609	2.2 .4 2.9	402 93 494	1.7 .4 2.1	383 119 303	2.0 .6 1.5	328 102 381	2.1 .6 2.2	367 94 304	2.4 .6 2.0	344 102 384	2.3 .7 2.6	-6.3 +8.5 +26.3
5. ANNE ARUNDEL	1,164	7.5	999	5.4	1,049	5.4	1,384	7.4	1,514	7.2	1,441	6.3	1,734	8.8	1,663	9.4	1,337	8.9	1,044	7.1	-21.9
6. MONTGOMERY	1,218	7.9	1,485	8.1	1,212	6.3	1,230	6.6	2,076	9.8	1,653	7.2	677	3.5	917	5.2	790	5.2	630	4.3	-20.3
7. PRINCE GEORGE'S	2,800	18.1	3,002	16.4	2,867	14.9	3,259	17.4	3,473	16.5	3,679	15.9	3,869	19.7	3,452	19.6	2,642	17.5	2,792	19.1	+5.7
8. BALTIMORE CITY	5,892	38.2	8,213	44.8	9,529	49.6	7,701	41.1	8,377	39.7	11,531	49.8	8,366	42.7	6,716	38.1	5,346	35.4	4,400	30.0	-17.7
9. CALVERT CHARLES ST. MARY'S	56 109 87	.4 .7 .6	85 173 107	.5 .9 .6	72 19 148	.4 .6 .8	93 251 199	.5 1.3 1.1	168 288 219	.8 1.4 1.0	116 389 139	.5 7.2 .6	135 341 215	.7 1.7 1.1	165 449 243	.9 2.6 1.4	150 472 178	1.0 3.1 1.2	219 457 202	1.5 3.1 1.4	+46.0 -3.2 +13.5
10. CARROLL FREDERICK HOWARD	126 120 181	.8 .8 1.2	124 150 237	.7 .8 1.3	107 131 205	.5 .7 1.1	161 175 296	.8 .9 1.6	223 166 329	1.1 .8 1.6	193 209 289	.8 .9 1.2	291 161 233	1.5 .8 1.2	212 221 227	1.2 1.3 1.3	314 232 234	2.1 1.5 1.6	338 216 228	2.3 1.5 1.6	+7.6 -6.9 -2.6
STATE	15,433	100.0	18,340	100.0	19,214	100.0	18,735	100.0	21,079	100.0	23,164	100.0	19,599	100.0	17,549	100.0	15,086	100.0	14,649	100.0	-2.9

\* Percentages pertain to each jurisdiction's proportion of the state's total cases.

TABLE 5  
 TOTAL NUMBER OF CASES HANDLED INFORMALLY  
 BY THE JUVENILE SERVICES ADMINISTRATION BY COUNTY AND REGION\*  
 FISCAL YEARS 1971-1980

REGIONS	1971		1972		1973		1974		1975		1976		1977		1978		1979		1980		% Change 79-80
	N	%	N	%	N	%	N	%	N	%	N	%	N	%	N	%	N	%	N	%	
1. DORCHESTER SOMERSET WICOMECO WORCESTER	103 43 70 701	.8 .4 .6 5.7	73 39 71 281	.7 .4 .7 2.7	67 9 6	.8 .1 .1	31 1 7 1	.5 .0 .1 .0	57 1 1 5	.8 1 1 .1	31 13 5	.6 .3 .1	41 9 4	.9 .2 .1	31 2 2 11	.5 .0 .0 .2	37 3 1 2	.6 .1 .0 .0	11 3	.1 .0	- .7 -100.0 -100.0 + 50.0
2. CAROLINE CECIL KENT QUEEN ANNE'S TALBOT	56 248 14 66 65	.5 2.0 .1 .5 .5	35 166 55 48 41	.3 1.6 .5 .5 .4	16 35 23 41 32	.2 .7 .3 .5 .4	25 33 21 76 76	.4 .6 .4 1.3 1.3	20 27 19 57 165	.3 .4 .2 .8 2.2	27 62 13 28 95	.5 1.2 .3 .5 1.9	13 30 7 16 79	.3 .6 .2 .3 1.7	20 18 9 17 72	.3 .3 .1 .3 1.2	33 9 23 16 105	.6 .2 .4 .3 1.8	61 44 14 12 107	.8 .5 .2 .1 1.3	+ 84.8 +338.9 - 39.1 - 25.0 + 1.9
3. BALTIMORE HARFORD	1,558 510	12.7 4.2	1,614 653	15.6 6.3	1,781 489	21.3 5.8	1,149 430	19.0 7.1	3,513 34	47.2 .4	781 18	15.3 .4	441 58	9.2 1.2	1,069 90	17.3 1.5	1,069 130	18.7 2.3	1,333 101	16.6 1.3	+ 24.7 - 22.3
4. ALLEGANY GARRETT WASHINGTON	17 2 20	.1 .0 .2	27 29 13	.3 .3 .1	52 50 46	.6 .6 .5	6 34 25	.1 .6 .4	6 24 97	.1 .3 1.3	5 43 245	.1 .8 4.8	4 20 131	.1 .4 2.7	9 30 92	.1 .5 14.8	12 26 85	.2 .5 1.5	12 76 79	.1 .9 1.0	0.0 +192.3 - 7.0
5. ANNE ARUNDEL	1,189	9.7	1,038	10.0	216	2.6	81	1.3	865	11.6	993	19.4	902	18.8	1,090	17.6	1,170	20.5	1,046	13.1	- 10.5
6. MONTGOMERY	1,378	11.2	1,961	19.0	1,293	15.5	1,858	30.7	770	10.3	601	11.8	385	8.0	334	5.4	349	6.1	233	2.9	- 33.2
7. PRINCE GEORGE'S	2,983	24.2	2,175	21.0	2,243	26.8	903	14.9	557	7.5	707	13.8	813	17.0	830	13.4	698	12.2	1,986	24.8	+184.5
8. BALTIMORE CITY	2,623	21.3	1,284	12.4	1,378	16.5	945	15.6	645	8.7	1,032	20.2	1,486	31.0	2,148	34.7	1,608	28.2	2,280	28.5	+ 41.8
9. CALVERT CHARLES ST. MARY'S	134 244 102	1.1 2.0 .8	114 262 148	1.1 2.5 1.4	173 78 176	2.1 .9 2.1	184 39 22	3.1 .6 .4	258 66 1	3.5 .9 .0	168 26 1	3.3 .5 .0	220 21 14	4.6 .4 .3	184 21 26	3.0 .3 .4	201 15 63	3.5 .3 1.1	209 34 285	2.6 .4 3.6	+ 4.0 +126.7 +352.4
10. CARROLL FREDERICK HOWARD	26 67 81	.2 .5 .7	22 111 93	.2 1.1 .9	34 98 2	.4 1.2 .0	25 72 1	.4 1.2 .0	131 112 12	1.7 1.5 .2	113 90 12	2.2 1.8 .2	19 66 10	.4 1.4 .2	22 60 8	.4 1.0 .1	18 25 4	.3 .4 .1	8 35 42	.1 .4 .5	- 55.6 + 40.0 +950.0
STATE	12,302	100.0	10,353	100.0	8,358	100.0	6,045	100.0	7,443	100.0	5,109	100.0	4,789	100.0	6,195	100.0	5,702	100.0	8,011	100.0	+ 40.5

\* Percentages pertain to each jurisdiction's proportion of the state's total cases.

18

TABLE 6

TOTAL NUMBER OF JUVENILE CASES DISAPPROVED OR CLOSED AT INTAKE BY COUNTY AND REGION\*  
FISCAL YEARS 1971-1980

REGIONS	1971		1972		1973		1974		1975		1976		1977		1978		1979		1980		% Change 79-80
	N	%	N	%	N	%	N	%	N	%	N	%	N	%	N	%	N	%	N	%	
1. DORCHESTER SOMERSET WICOMECO WORCESTER	2	.1	40	.5	101	.7	110	.5	101	.4	75	.2	57	.2	102	.4	106	.5	159	.7	+50.0
			22	.3	58	.4	49	.2	84	.3	61	.2	50	.2	32	.1	68	.3	46	.2	-32.4
			16	.2	89	.6	164	.7	198	.7	140	.5	57	.2	59	.3	145	.6	315	1.3	+117.2
	15	.3	289	3.4	502	3.5	565	2.4	601	2.1	705	2.4	661	2.5	510	2.2	469	2.0	740	3.1	+57.8
2. CAROLINE CECIL KENT QUEEN ANNE'S TALBOT	3	.1	30	.3	40	.3	79	.4	136	.5	80	.3	60	.2	80	.3	131	.6	100	.4	-23.7
	13	.3	176	2.1	330	2.3	285	1.2	324	1.1	317	1.1	301	1.1	296	1.3	428	1.8	531	2.2	+24.1
	37	.8	21	.2	41	.3	106	.5	118	.4	59	.2	98	.4	50	.2	64	.3	83	.3	+29.7
	1	.0	9	.1	9	.1					76	.2	68	.3	65	.3	113	.5	118	.5	+4.4
	27	.6	30	.3	82	.6	28	.1	28	.1	83	.3	53	.2	50	.2	64	.3	51	.2	-20.3
3. BALTIMORE HARFORD	492	11.0	434	5.1	1,079	7.5	2,867	12.4	1,574	5.5	3,187	10.7	3,303	12.6	2,761	11.7	2,958	12.7	3,268	13.5	+10.5
	63	1.4	58	.7	102	.7	111	.5	560	2.0	569	1.9	690	2.6	694	2.9	771	3.3	858	3.5	+11.3
4. ALLEGANY GARRETT WASHINGTON	20	.5	7	.1	79	.5	119	.5	91	.3	51	.2	50	.2	97	.4	97	.4	96	.4	-1.0
			4	.0	15	.1	9	.0	8	.0	25	.1	22	.1	6	.0	10	.0	35	.1	+250.0
		39	.5	191	1.3	122	.5	136	.5	111	.4	409	1.6	291	1.2	233	1.0	187	.8	-19.7	
5. ANNE ARUNDEL	68	1.5	371	4.3	1,550	10.8	2,241	9.7	2,917	10.2	2,614	8.8	2,399	9.1	2,194	9.3	2,006	8.6	1,730	7.2	-13.8
6. MONTGOMERY	354	7.9	231	2.7	526	3.7	444	1.9	2,407	8.4	2,145	7.2	2,112	8.0	1,512	6.4	1,671	7.2	1,294	5.4	-22.6
7. PRINCE GEORGE'S	194	4.4	1,646	19.2	1,607	11.2	4,430	19.2	5,290	18.5	4,688	15.7	4,104	15.6	4,071	17.3	3,510	15.1	4,011	16.6	+14.3
8. BALTIMORE CITY	2,749	61.4	4,579	53.6	6,796	47.3	9,123	39.5	11,668	40.7	12,315	41.4	9,007	34.2	7,911	33.6	7,541	32.3	7,964	32.9	+5.6
9. CALVERT CHARLES ST. MARY'S	28	.6	14	.2	3	.0	7	.0	7	.0	26	.1	22	.1	76	.3	127	.5	187	.8	+47.2
	3	.1	26	.3	55	.4	235	1.0	321	1.1	361	1.2	394	1.5	424	1.8	366	1.6	98	.4	-73.2
		147	1.7	334	2.3	663	2.9	633	2.2	545	1.8	591	2.3	619	2.6	817	3.5	643	2.7	-21.3	
10. CARROLL FREDERICK HOWARD	218	4.9	85	1.0	189	1.3	363	1.6	315	1.1	315	1.0	432	1.6	402	1.7	408	1.7	350	1.4	-14.2
	172	3.9	189	2.2	338	2.3	513	2.2	522	1.8	533	1.8	633	2.4	596	2.5	625	2.7	668	2.8	+6.9
	9	.2	86	1.0	261	1.8	492	2.1	601	2.1	690	2.3	741	2.8	642	2.7	593	2.5	653	2.7	+10.1
STATE	4,459	100.0	8,549	100.0	14,377	100.0	23,125	100.0	28,640	100.0	29,771	100.0	26,314	100.0	23,542	100.0	23,321	100.0	24,185	100.0	+3.7

\* Percentages pertain to each jurisdiction's proportion of the state's total cases.



TABLE ?  
 TOTAL OFFENSE CASE RATE AND TOTAL DELINQUENT CASE RATE  
 PER 1,000 JUVENILES BY COUNTY AND REGION - FISCAL 1980

	Population Estimate 5 through 17 years * July 1, 1978	Total Cases Handled by Juvenile Services Administration	Total Case Rate Per 1,000 Juveniles	Total Delinquent Cases Handled by Juvenile Services Administration	Delinquent Case Rate Per 1,000 Juveniles
<b>REGIONS</b>					
1. DORCHESTER	6,470	284	43.9	222	34.3
SOMERSET	4,090	121	29.6	102	24.9
WICOMICO	12,960	434	33.5	404	31.2
WORCESTER	5,850	348	145.0	739	126.3
2. CAROLINE	4,900	229	46.7	198	40.5
CECIL	14,650	744	50.8	722	49.3
KENT	3,420	164	48.0	139	40.6
QUEEN ANNE'S	4,980	180	36.1	161	32.3
TALBOT	5,170	271	52.4	241	46.6
3. BALTIMORE	133,730	6,554	49.0	5,883	44.0
HARFORD	36,520	1,419	38.9	1,313	36.0
4. ALLEGANY	16,790	452	26.9	339	20.2
GARRETT	6,420	213	33.2	137	21.3
WASHINGTON	24,190	650	26.9	509	21.0
5. ANNE ARUNDEL	83,860	3,820	45.6	3,327	39.7
6. MONTGOMERY	131,840	2,157	16.4	2,123	16.1
7. PRINCE GEORGE'S	154,990	8,789	56.7	7,511	48.5
8. BALTIMORE CITY	169,620	14,644	86.3	12,687	74.8
9. CALVERT	7,800	615	78.8	454	58.2
CHARLES	19,440	1,134	58.5	885	45.6
ST. MARY'S	14,020	585	41.7	495	35.3
10. CARROLL	22,120	696	31.5	598	27.0
FREDERICK	25,680	919	35.8	849	33.1
HOWARD	28,000	923	33.0	879	31.4
STATE	937,510	46,845	50.0	40,917	43.6

\* Maryland Center for Health Statistics

TABLE 8  
DISPOSITION BY COUNTY AND REGION  
FISCAL 1980

REGIONS	Petition Withdrawn	Dismissed	Warned, Adjusted, Or Counselled	Jurisdiction Waived	Continue Case Without Finding	Custody Awarded	Committed to Department of Social Services	Committed to Training School	Probation	Referred to Other Agency	Restitution or Fine	Support Ordered or Revised	Suspended Sentence	Other
1. DORCHESTER SOMERSET WICOMICO WORCESTER	4 2 2 2	13 18 14 29	2	25 6 11 26	2	11 2 2 2	20 4 5 5	1 2 9 5	28 35 56 25		2 4		1	2 2 10 5
2. CAROLINE CECIL KENT QUEEN ANNE'S TALBOT	1 10 6	4 27 22 11 12	8 2 3	7 24 6 3 2		3 1	2	9 1 5 7	27 54 13 20 54	1	4 2 2	13		4 11 2 4
3. BALTIMORE HARFORD	14 4	563 108	35 6	46 3	3 4	1	155 24	100 21	751 187	5 1	11 22	4	3	46 33
4. ALLEGANY GARRETT WASHINGTON	9 1	9 24 23	22 7 18	4 15	1	25 6 2	10 8 23	4 6 17	106 37 140	1	40 19		1 24	57 4 26
5. ANNE ARUNDEL	22	203	5	8	109	9	79	81	355	10	6			71
6. MONTGOMERY	9	221	14	8	17	1	9	11	319	3	1			
7. PRINCE GEORGE'S		357	13	29	2	96	291	237	899	2	21		11	480
8. BALTIMORE CITY	77	1,957	32	153	183		262	367	1,076	8	2	7		38
9. CALVERT CHARLES ST. MARY'S	32	41 59 36	3 7 3	1 4		2 2 2	9 12 25	6 4 3	105 169 89		6			10 46 7
10. CARROLL FREDERICK HOWARD	5 92	40 26 56	16 3 2	4 14 2		3 6	34 15	10 15 15	93 81 43	1	7		7	25 35 2
STATE	292	3,873	201	411	321	174	987	936	4,757	32	149	24	23	970

TABLE 8

(continued)

REGIONS	Committed to Mental Institution	Referred to Psychiatric Care	Stat	Probation Without Verdict	Committed to Juvenile Services Administration/Purchase of Care	Committed to Juvenile Services Administration/Purchase of Services	Group Home	Protective Supervision	Committed to Youth Center	Total Feral	Total Informal	Total Disapproved	Total Closed at Intake	GRAND TOTAL
1. DORCHESTER SOMERSET WICOMICO WORCESTER	1		1		7 5 2		3		1 1 2	114 75 119 105	11 3	33 32	159 46 282 708	284 121 434 848
2. CAROLINE CECIL KENT QUEEN ANNE'S TALBOT			7		10 1 12	1 4 4	7 6 2 6 3	1 2 1 4	6 1 1	68 169 67 50 113	61 44 14 12 107	24 66 21 4 15	76 465 62 114 36	229 744 164 180 271
3. BALTIMORE HARFORD	3 1		149	2 24	64 10			7	1 2	1,953 460	1,333 101	336 114	2,932 744	6,554 1,419
4. ALLEGANY GARRETT WASHINGTON	1 3	1	3 2	14 15	19 32		8 2	8 4 21	4 1 4	344 102 384	12 76 79	1 11 48	95 24 139	452 213 650
5. ANNE ARUNDEL	10				28		1	46	1	1,044	1,046	420	1,310	3,820
6. MONTGOMERY	1			1	8	1	4		2	630	233	18	1,276	2,157
7. PRINCE GEORGE'S	25		228		81			28		2,792	1,986	79	3,932	8,789
8. BALTIMORE CITY	1			4	153	1		17	2	4,400	2,280	1,295	6,669	14,644
9. CALVERT CHARLES ST. MARY'S			34 108 19		2 11 9		3	2	3 3	219 457 202	209 34 285	56 73 13	131 570 85	615 1,134 585
10. CARROLL FREDERICK HOWARD	1 2	1	72 1	25	3 10 1	2	4 1	2 1	3 2	338 216 228	8 35 42	6 16 266	344 652 387	696 919 923
STATE	49	2	624	86	468	13	50	144	40	4,649	8,011	2,947	21,238	46,845

**TABLE 9**  
**MANNER OF HANDLING CASES BY COUNTY, REGION AND TYPE OF OFFENSE\***  
**FISCAL 1980**

	Formal			Informal			Disapproved at Intake			Closed at Intake			
	Delinquent	CINS	CIMA	Delinquent	CINS	CIMA	Delinquent	CINS	CIMA	Delinquent	CINS	CIMA	
<b>REGIONS</b>													
1. BORCHESTER SOMERSET WICOMICO WORCESTER	77 73 114 97	2 2 1 1	35  2 7	11   3						134 29 257 608	23 17 25 98	2   2	
2. CAROLINE CECIL KERT QUEEN ANNE'S TALBOT	59 165 44 46 100	5 3 2 4 13	4 1 21  	53 41 12 8 105	8 3 2 4 2					64 456 62 103 27	10 9  11 9	2    	
3. BALTIMORE HARTFORD	1,716 431	31 6	206 23	1,297 87	32 14	4	315 110	13 4	8	2,555 685	308 59	69	
4. ALLEGANY GARRETT WASHINGTON	234 70 316	45 4 14	32 28 52	11 42 39	1 34 34					93 17 128	2 6 11		1
5. ANNE ARUNDEL	871	12	161	999	47		371	48	1	1,086	224		
6. MONTGOMERY	628	2		224	9		11	7		1,260	16		
7. PRINCE GEORGE'S	2,250	84	458	1,901	78	7	70	7	2	3,290	633	9	
8. BALTIMORE CITY	4,007	91	302	1,608	667	5	1,162	123	10	5,910	719	40	
9. CALVERT CHARLES ST. MARY'S	182 434 184	4 3 6	33 20 12	155 30 248	52 4 37	2	32 66 13	24 3	4	85 355 50	46 210 35		5
10. CARROLL FREDERICK HOWARD	287 187 222	3 4 5	45 25 1	7 34 38	1 1 4		6 15 258			298 613 361	45 36 26	1 3	
<b>STATE</b>	<b>12,794</b>	<b>347</b>	<b>1,468</b>	<b>6,953</b>	<b>1,034</b>	<b>24</b>	<b>2,644</b>	<b>275</b>	<b>28</b>	<b>18,526</b>	<b>2,578</b>	<b>134</b>	

\* Does not include "Special Proceedings" cases. (N = 40)

TABLE 10  
MANNER OF HANDLING CASES BY COUNTY, REGION AND SEX  
FISCAL 1980

	Formal			Informal			Disapproved at Intake			Closed at Intake		
	Male	Female	Total	Male	Female	Total	Male	Female	Total	Male	Female	Total
<b>REGIONS</b>												
<b>1. BORCHESTER</b>	96	18	114	9	2	11				115	44	159
<b>SOMERSET</b>	62	13	75							29	17	46
<b>WICOMICO</b>	104	15	119				26	7	33	208	74	282
<b>WORCESTER</b>	94	11	105	3		3	26	6	32	521	187	708
<b>2. CAROLINE</b>	62	6	68	51	10	61	19	5	24	60	16	76
<b>CECIL</b>	139	30	169	35	9	44	48	18	66	381	84	465
<b>KERT</b>	53	14	67	13	1	14	13	8	21	53	9	62
<b>QUEEN ANNE'S</b>	48	2	50	5	7	12	4		4	79	35	114
<b>TALBOT</b>	91	22	113	86	21	107	12	3	15	22	14	36
<b>3. BALTIMORE</b>	1,632	321	1,953	1,030	303	1,333	279	57	336	2,283	649	2,932
<b>HARFORD</b>	406	54	460	83	18	101	102	12	114	603	141	744
<b>4. ALLEGANY</b>	252	92	344	7	5	12	1		1	74	21	95
<b>GARRETT</b>	81	21	102	51	25	76	7	4	11	17	7	24
<b>WASHINGTON</b>	308	76	384	56	23	79	30	18	48	104	35	139
<b>5. ANNE ARUNDEL</b>	852	192	1,044	781	265	1,046	301	119	420	972	338	1,310
<b>6. MONTGOMERY</b>	576	54	630	203	30	233	9	9	18	1,016	260	1,276
<b>7. PRINCE GEORGE'S</b>	2,198	594	2,792	1,588	398	1,986	60	19	79	2,885	1,047	3,932
<b>8. BALTIMORE CITY</b>	3,829	571	4,400	1,654	626	2,280	1,056	239	1,295	5,177	1,492	6,669
<b>9. CALVERT</b>	157	62	219	165	44	209	35	21	56	81	50	131
<b>CHARLES</b>	403	54	457	22	12	34	53	20	73	375	195	570
<b>ST. MARY'S</b>	169	33	202	194	91	285	13		13	59	26	85
<b>10. CARROLL</b>	271	67	338	7	1	8	6		6	268	76	344
<b>FREDERICK</b>	176	40	216	28	7	35	11	5	16	499	153	652
<b>HOWARD</b>	210	18	228	33	9	42	225	41	266	302	85	387
<b>STATE</b>	12,269	2,380	14,649	6,104	1,907	8,011	2,336	611	2,947	16,183	5,055	21,238

24

TABLE 11  
 MANNER OF HANDLING CASES BY COUNTY, REGION AND RACE  
 FISCAL 1980

	Formal			Informal			Disapproved at Intake			Closed at Intake		
	White	Black	Total*	White	Black	Total*	White	Black	Total*	White	Black	Total*
<b>REGIONS</b>												
1. DORCHESTER	83	31	114	11		11				88	71	159
SOMERSET	52	23	75							26	20	46
WICOMICO	79	40	119				16	17	33	183	99	282
WORCESTER	74	31	105	3		3	29	3	32	669	36	708
2. CAROLINE	53	15	68	39	22	61	14	10	24	64	12	76
CECIL	161	8	169	43	1	44	64	2	66	447	16	465
KENT	42	25	67	12	2	14	15	6	21	49	13	62
QUEEN ANNE'S	40	10	50	7	5	12	2	1	4	95	19	114
TALBOT	78	34	113	77	30	107	9	5	15	30	6	36
3. BALTIMORE	1,572	376	1,953	929	400	1,333	246	89	336	2,252	668	2,932
HARFORD	417	42	460	93	8	101	100	14	114	680	64	744
4. ALLEGANY	323	21	344	9	3	12	1		1	89	6	95
GARRETT	102		102	76		76	11		11	24		24
WASHINGTON	362	20	384	76	3	79	46	2	48	134	5	139
5. ANNE ARUNDEL	852	188	1,044	863	179	1,046	353	67	420	1,171	133	1,310
6. MONTGOMERY	419	205	630	199	29	233	15	3	18	872	386	1,276
7. PRINCE GEORGE'S	1,007	1,721	2,792	979	994	1,986	33	45	79	1,654	2,229	3,932
8. BALTIMORE CITY	1,008	3,370	4,400	577	1,698	2,280	304	990	1,295	2,024	4,624	6,669
9. CALVERT	179	40	219	159	50	209	53	3	56	106	25	131
CHARLES	351	105	457	31	3	34	49	24	73	464	105	570
ST. MARY'S	152	50	202	212	73	285	9	4	13	59	26	85
10. CARROLL	316	20	338	8		8	6		6	331	13	344
FREDERICK	164	51	216	31	4	35	13		16	551	100	652
HOWARD	161	64	228	37	5	42	208	56	266	291	92	387
STATE	8,047	6,490	14,649	4,471	3,509	8,011	1,596	1,344	2,947	12,353	8,768	21,238

\* Total figures may include cases in which race was "other" or "unknown". There were 267 such cases in fiscal 1980.



TABLE 12

TOTAL CASES HANDLED BY THE JUVENILE SERVICES ADMINISTRATION  
BY COUNTY, REGION AND SOURCE OF REFERRAL - FISCAL 1980

SOURCE OF REFERRAL -										
REGIONS	Police	Department of Education	Parent/ Relative	Department of Social Services	Other Social Agency	Court/ Probation	Other	Citizen	Special Police	TOTAL
1. DORCHESTER	208	1	31	24		1		16	3	284
SOMERSET	85	1	20	10	1			4		121
WICOMICO	400	8	11	1		13	1			434
WORCESTER	831		5	5		2	4	1		848
2. CAROLINE	163	17	10	6		1	11	21		229
CECEL	707	4	3	1			2	21	6	744
KENT	90	16	4	21			27	3	3	164
QUEEN ANNE'S	133	27	6				5	9		180
TALBOT	248	11	5		1		2	4		271
3. BALTIMORE	6,298	18	13	131	5	8	79	2		6,554
HARFORD	1,320	2	46	33	9	3	6			1,419
4. ALLEGANY	270	21	82	29		17		7	26	452
GARRETT	111	10	49	16	2	6	1	18		213
WASHINGTON	438		64	50		37	6	38	17	650
5. ANNE ARUNDEL	3,275	30	213	160	4		137	1		3,820
6. MONTGOMERY	2,028	4	24			2	1	96	2	2,157
7. PRINCE GEORGE'S	4,919	588	463	434	20	10	124	839	1,392	8,789
8. BALTIMORE CITY	10,171	1,568	1,476	275	7	6	22	1,111	8	14,644
9. CALVERT	549	17	9	30		2		8		615
CHARLES	1,008	37	55	24	2	2	5	1		1,134
ST. MARY'S	512	8	36	27				2		585
10. CARROLL	581	9	6	45	1	17	9	18	10	696
FREDERICK	776	23	26	25				51	18	919
HOWARD	900	1	14	3				2	3	923
STATE	36,021	2,421	2,671	1,350	52	127	442	2,273	1,488	46,845

TABLE 13  
TOTAL CASES HANDLED BY THE JUVENILE SERVICES ADMINISTRATION  
BY COUNTY, REGION AND AGE - FISCAL 1980\*

REGIONS	Under 10 Years	10 Years	11 Years	12 Years	13 Years	14 Years	15 Years	16 Years	17 Years	18 Years	Over 18 or Unknown	Total
1. DORCHESTER	33	4	9	13	19	33	50	52	65	2	4	284
SOMERSET	1	3	5	13	15	10	18	29	25	1	1	121
WICOMICO	8	7	7	24	52	44	77	95	110	6	4	434
WORCESTER	8	4	8	15	39	85	165	221	296	5	2	846
2. CAROLINE	5	6	5	17	11	25	48	54	52	1	5	229
CECIL	21	14	27	35	60	81	137	147	189	11	22	744
KENT	13	1	3	6	11	25	25	34	46			164
QUEEN ANNE'S	1	1	3	5	11	33	45	38	42	1		180
TALBOT	10	4	1	4	21	32	59	60	78	1	1	271
3. BALTIMORE	109	76	129	243	489	938	1,356	1,571	1,492	107	44	6,554
HARFORD	49	31	28	52	107	204	286	278	324	41	19	1,419
4. ALLEGANY	26	7	14	19	26	55	87	75	98	4	41	452
GARRETT	16	1	11	10	21	37	38	32	40	2	5	213
WASHINGTON	45	3	8	20	60	77	126	150	149	7	5	650
5. ANNE ARUNDEL	131	63	74	166	297	531	808	887	766	31	66	3,820
6. MONTGOMERY	28	23	29	74	166	310	447	497	518	45	20	2,157
7. PRINCE GEORGE'S	311	131	191	386	843	1,379	1,827	1,833	1,707	74	107	8,789
8. BALTIMORE CITY	398	257	370	729	1,400	2,257	2,929	3,049	2,681	213	361	14,644
9. CALVERT	20	11	21	46	75	113	134	106	80	3	6	615
CHARLES	42	19	26	49	82	166	234	253	245	12	6	1,134
ST. MARY'S	17	8	18	11	59	70	107	133	140	11	11	585
10. CARROLL	34	17	16	19	52	91	139	145	166	10	7	696
FREDERICK	46	21	27	47	70	133	170	186	204	10	5	919
HOWARD	6	6	20	25	43	119	177	227	268	16	16	923
STATE	1,378	718	1,050	2,028	4,029	6,848	9,489	10,152	9,781	614	758	46,845

\* Age in years at the time the referral is received by intake.

27  
a

TABLE 14

## TOTAL CASES HANDLED BY THE JUVENILE SERVICES ADMINISTRATION

BY COUNTY, REGION AND MAJOR REASON REFERRED - FISCAL 1980

REGIONS	Arson	Assault	Auto Theft/ Unauthorized Use	Burglary/Breaking and Entering	Larceny	Robbery	Disorderly Conduct	Sex Offense	Vandalism	Narcotics Violation	Glue Sniffing and Other Inhalants	Alcohol Beverage Violation	Shoplifting	Purse Snatching	Firearms or Deadly Weapons Violation	Rec/Pos of Stolen Goods
1. DORCHESTER SOMERSET WICOMICO WORCESTER	1 2 5	25 11 39 23	9 2 12 20	21 14 53 32	36 19 64 66	6	11 4 7 33	1 4 2	14 12 44 16	23 5 42 221	1	7 4 1 106	28 2 58 73	3 2	2 5	2 1 3
2. CAROLINE CECIL KENT QUEEN ANNE'S TALBOT	1 2 1 8	22 68 32 20 11	7 22 5 10 7	26 76 34 22 13	33 108 3 27 38	3 3	2 19 10 12 2	4 1 1 3	16 48 4 5 15	9 100 6 19 28		2 23 9 44	10 30 7 3 22	1	2 8 1	5 3 3 4
3. BALTIMORE HARFORD	37 4	766 151	269 119	753 182	757 180	56 11	213 26	21 5	474 286	377 181	17 4	196 8	1,134 47	2	57 10	22 5
4. ALLEGANY GARRETT WASHINGTON	3 1 5	27 16 51	19 15 9	22 21 95	28 16 62	3	4 5 17	2	50 41	13 8 13		10 1 27	48 8 62	2	9 2	7
5. ANNE ARUNDEL	10	338	86	344	438	15	144	17	255	429	1	211	398	5	20	44
6. MONTGOMERY	21	199	128	249	452	41	35	27	187	163	3	97	223	4	24	7
7. PRINCE GEORGE'S	67	841	322	1,215	973	239	132	67	440	470	3	52	1,554	9	107	95
8. BALTIMORE CITY	109	2,379	557	1,677	1,682	203	697	61	628	847	101	100	843	69	341	127
9. CALVERT CHARLES ST. MARY'S	1 13 9	40 80 35	27 47 22	97 108 60	62 146 63	5 1	7 12 6	3 9 6	79 115 37	21 109 48		9 51 24	16 62 88	2	3 4 8	2 1 6
10. CARROLL FREDERICK HOWARD	4 7	54 85 61	7 19 38	27 87 119	105 164 128	2 15	6 19 55	3 4 8	118 79 46	88 67 95		22 34 35	26 131 61	1	7 6 13	3 4 14
STATE	311	5,374	1,778	5,347	5,650	608	1,478	249	2,849	3,382	139	1,073	4,934	100	629	358

TABLE 14

(continued)

REGIONS	Trespassing	False Fire Alarm	Violation of Supervision	Other	Total Delinquent	Runaway	Treugny	Unmanageable	Total CIMS	Neglect	Dependency	Dependency and Neglect	Mentally Handicapped	Total CIMA	Special Proceedings	GRAND TOTAL
1. DORCHESTER	8			28	222			25	25	1	24	12		37		284
SOMERSET				26	102	7	1	11	19							121
WICOMICO	2		10	59	404	17	2	7	26		2			2	2	434
WORCESTER	7		1	129	739	96	1	3	100		9			9		848
2. CAROLINE	10			47	198	9	11	5	25	1	3	2		6		229
CECIL	24	5		183	722	8	10	3	21		1			1		744
KENT	5			17	139		1	3	4		3	18		21		164
QUEEN ANNE'S	6			33	161	10	6	3	19							180
TALBOT	8			26	241	13	11	6	30							271
3. BALTIMORE	272	4	2	514	5,883	173	58	153	384	7	279	1		287		6,554
HARFORD	26	3		165	1,313	18	6	59	83		8	15		23		1,419
4. ALLEGANY	5		11	83	339	9	11	28	48	1	29	2		32	33	452
GARRETT	2		4	40	137	8	6	33	47	8	21			29		213
WASHINGTON	7	4	29	78	509	33	1	44	78	14	42	2	3	61	2	650
5. ANNE ARUNDEL	187	3		382	3,327	88	30	213	331	44	111	5	2	162		3,820
6. MONTGOMERY	63	9		191	2,123	7		27	34							2,157
7. PRINCE GEORGE'S	255	28		642	7,511	237	245	320	802	223	201	11	41	476		8,789
8. BALTIMORE CITY	587	95		1,584	12,687	447	321	832	1,600	76	22	255	4	357		14,644
9. CALVERT	7			80	454	104	11	11	126			35		35		615
CHARLES	22	3		96	885	119	49	52	220	17	4	8		29		1,134
ST. MARY'S	7	7		68	495	31	12	35	78	2	1	9		12		585
10. CARROLL	29		17	82	598	38	6	5	49	3	43			46	3	696
FREDERICK	31			117	849	10	21	11	42	19	7	2		23		919
HOWARD	85	3	1	94	879	29	1	13	43		1			1		923
STATE	1,655	164	75	4,764	40,917	1,511	821	1,902	4,234	416	811	377	50	1,654	40	46,845

TABLE 15  
TOTAL CASES HANDLED BY THE JUVENILE SERVICES ADMINISTRATION  
BY MAJOR REASON AND AGE AT TIME OF REFERRAL - FISCAL 1980

Major Reason	Under 10 Years	10 Years	11 Years	12 Years	13 Years	14 Years	15 Years	16 Years	17 Years	18 Years	Over 18 or Unknown	Total
Arson	17	19	20	30	32	38	59	49	42	4	1	311
Assault	100	90	141	279	487	759	997	1,120	1,149	62	190	5,374
Auto Theft/Unauth. Use	12	4	14	37	128	293	427	437	391	26	9	1,778
Burglary/B & E	84	91	129	247	540	833	1,121	1,139	1,063	84	16	5,347
Larceny	81	101	123	252	453	832	1,098	1,257	1,337	74	42	5,650
Robbery	3	1	5	22	50	101	136	135	134	16	5	608
Disorderly Conduct	10	5	12	22	69	150	296	388	491	28	7	1,478
Sex Offense	5	3	7	17	31	47	38	55	42	3	1	249
Vandalism	133	104	133	235	323	424	471	489	437	27	73	2,849
Narcotics Violation	4	8	10	45	153	389	691	954	1,059	57	12	3,382
Glue Sniffing		2	2	6	16	23	41	25	22	2		139
Alcoholic Beverage Viol.		1		6	33	72	188	335	423	14	1	1,073
Shoplifting	71	74	157	282	502	791	1,032	1,053	900	53	19	4,934
Purse Snatching		1	3	4	9	11	27	29	14	2		100
Firearms Violation	3	1	9	13	50	78	143	145	178	9		629
Rec/Poss Stolen Goods	3	3	10	14	27	53	72	87	80	7	2	358
Trespassing	19	29	25	42	130	250	358	423	345	22	12	1,655
False Fire Alarm	27	5	13	12	27	17	26	20	15	2		164
Violation of Supervision				1	3	13	14	20	22	2		75
Other	89	52	81	170	357	619	1,002	1,021	1,171	110	92	4,764
<b>Total Delinquent</b>	<b>661</b>	<b>594</b>	<b>894</b>	<b>1,736</b>	<b>3,420</b>	<b>5,793</b>	<b>8,237</b>	<b>9,181</b>	<b>9,315</b>	<b>604</b>	<b>482</b>	<b>40,917</b>
Runaway	4	5	15	53	161	286	407	380	188	3	9	1,511
Truancy	23	19	30	68	133	235	243	46	19	2	3	821
Un governable	28	32	48	100	220	395	465	391	196	2	25	1,902
<b>Total CINS</b>	<b>55</b>	<b>56</b>	<b>93</b>	<b>221</b>	<b>514</b>	<b>916</b>	<b>1,115</b>	<b>817</b>	<b>403</b>	<b>7</b>	<b>37</b>	<b>4,234</b>
Neglect	193	23	15	18	23	23	29	31	6	1	54	416
Dependency	318	20	25	32	47	85	85	84	38	1	76	811
Dependency & Neglect	145	23	14	17	21	27	21	24	11		74	377
Mentally Handicapped	6	2	9	4	3	4	1	11	7	1	2	50
<b>Total CINA</b>	<b>662</b>	<b>68</b>	<b>63</b>	<b>71</b>	<b>94</b>	<b>139</b>	<b>136</b>	<b>150</b>	<b>62</b>	<b>3</b>	<b>206</b>	<b>1,654</b>
Special Proceedings					1		1	4	1		33	40
<b>GRAND TOTAL</b>	<b>1,378</b>	<b>718</b>	<b>1,050</b>	<b>2,028</b>	<b>4,029</b>	<b>6,848</b>	<b>9,489</b>	<b>10,152</b>	<b>9,781</b>	<b>614</b>	<b>758</b>	<b>46,845</b>

06

TABLE 16  
 FORMAL CASES HANDLED BY THE JUVENILE SERVICES ADMINISTRATION  
 - BY MAJOR REASON AND DISPOSITION  
 FISCAL

Major Reason	Petition Withdrawn	Dismissed	Warned, Adjusted, or Counselled	Juris- diction Waived	Continue Case Without Finding	Custody Awarded to	Committed To Dept. of Social Services	Committed to Training Schools	Probation	Referred To Other Agency	Restitution or Fine	Support Ordered or Revised
Arson	2	43	7	4	5		1	6	53		4	
Assault	30	651	30	56	58	3	9	143	553	2	6	1
Auto Theft/Unauth. Use	17	221	16	27	22	1	1	84	298	2	7	
Burglary/B & E	49	757	32	110	71	2	10	272	1,170	5	24	2
Larceny	27	520	16	58	32		7	136	700	6	12	2
Robbery	4	35	6	24				54	131	1	1	
Disorderly Conduct	13	96	6	9	10		1	17	65	1	1	
Sex Offense	6	34		5	2	1		7	56			
Vandalism	14	282	9	11	14		2	18	229		21	
Narcotics Violation	27	120	7	18	24	1	3	21	272			1
Glue Sniffing	1	20	1		4			5	18			
Alcoholic Beverage Viol.	1	28		3	4			1	42			
Shoplifting	5	244	10	17	21	2	2	64	390	4	2	
Purse Snatching		12		4	3			8	17		1	
Firearms Violation	5	62	1	6	4	1		10	63	1		
Rec/Poss Stolen Goods	1	30	2	2	8			1	46		1	
Trespassing	6	68	4	2	5		3	18	76	2	4	1
False Fire Alarm	1	14	1	1				1	20			
Violation of Supervision	1	8	10		1		1	14	11			
Other	32	351	18	52	29	15	33	56	473	2	65	
<b>Total Delinquent</b>	<b>242</b>	<b>3,646</b>	<b>176</b>	<b>409</b>	<b>317</b>	<b>26</b>	<b>73</b>	<b>936</b>	<b>4,713</b>	<b>26</b>	<b>149</b>	<b>7</b>
Runaway	2	17	7			2	6		11	1		
Irruancy		7	4			2	15		7			
Ungovernable	5	13	7		2	6	11		14	2		
<b>Total CINS</b>	<b>7</b>	<b>37</b>	<b>18</b>		<b>2</b>	<b>10</b>	<b>32</b>		<b>32</b>	<b>3</b>		
Neglect	8	39			1	26	279		1	1		
Dependency	28	66	4	1	1	103	410		4			7
Dependency & Neglect	7	81	1	1		7	182		4	1		10
Mentally Handicapped		3				2	11			1		
<b>Total CINA</b>	<b>43</b>	<b>189</b>	<b>5</b>	<b>2</b>	<b>2</b>	<b>138</b>	<b>882</b>		<b>9</b>	<b>3</b>		<b>17</b>
Special Proceedings		1	2						3			
<b>GRAND TOTAL</b>	<b>292</b>	<b>3,873</b>	<b>201</b>	<b>411</b>	<b>321</b>	<b>174</b>	<b>987</b>	<b>936</b>	<b>4,757</b>	<b>32</b>	<b>149</b>	<b>24</b>

\* This figure does not reflect actual commitments at the Maryland Training School or Montrose. The section on institutional services contains actual figures.



TABLE 16  
(continued)

Major Reason	Suspended Sentence	Other	Committed to Mental Institution	Referred to Psychiatric Care	Stat	Probation without Verdict	Committed to JSA for Placement	Committed to JSA/Purchase of Care**	Group Home**	Protective Supervision	Committed to Youth Center**	Total
Arson	1	10			3		3					142
Assault	5	98	3		76	6	54			1	3	1,822
Auto Theft/Unauth. Use	1	67			44	4	26	1	5	1	4	849
Burglary/B & E	8	198	2		109	13	81	4	9		13	2,941
Larceny	12	134	5	1	97	6	58	1	7		5	1,842
Robbery	2	44			7		4		1			364
Disorderly Conduct	1	11			10	1	6					248
Sex Offense		18			3		2				1	135
Vandalism		32			62	13	12		1		2	722
Narcotics Violation		31			90	14	14		1		3	647
Glue Sniffing		1					4					56
Alcoholic Beverage Viol.	1	2	1		4	2	2			1		92
Shoplifting	6	57	4		38	5	24		4	2	1	902
Purse Snatching		1			1		2					49
Firearms Violation		11			5		4					173
Rec/Poss Stolen Goods		14			2	1	1				1	110
Trespassing	3	18	1		9		6				1	227
False Fire Alarm		1					2					41
Violation of Supervision	1	9	1			1	11		2	1	2	74
Other	5	112	3	1	51	20	29		4	3	4	1,358
<b>Total Delinquent</b>	<b>46</b>	<b>869</b>	<b>20</b>	<b>2</b>	<b>611</b>	<b>86</b>	<b>345</b>	<b>6</b>	<b>40</b>	<b>9</b>	<b>40</b>	<b>12,794</b>
Runaway		14	1		3		38	1	3	11		117
Truancy		6	1				5		2	9		58
Unmanageable		15	5		3		53	6	4	26		172
<b>Total CINS</b>		<b>35</b>	<b>7</b>		<b>6</b>		<b>96</b>	<b>7</b>	<b>9</b>	<b>46</b>		<b>347</b>
Neglect		6	1		6					22		390
Dependency		16	4				23		1	54		722
Dependency & Neglect		6					2			11		313
Mentally Handicapped		5	17		1		1			2		43
<b>Total CIMA</b>		<b>33</b>	<b>22</b>		<b>7</b>		<b>26</b>		<b>1</b>	<b>89</b>		<b>1,468</b>
Special Proceedings		33					1					40
<b>GRAND TOTAL</b>	<b>46</b>	<b>970</b>	<b>49</b>	<b>2</b>	<b>624</b>	<b>86</b>	<b>468</b>	<b>13</b>	<b>50</b>	<b>144</b>	<b>40</b>	<b>14,649</b>

\*\* These figures do not accurately reflect admissions. See sections on community or institutional services for actual figures.

TABLE 17  
 COMPARISON OF THE NUMBER OF CASES HANDLED BY THE MARYLAND JUVENILE  
 SERVICES ADMINISTRATION BY MAJOR REASON FOR REFERRAL - FISCAL  
 1979-1980

Major Reason	Formal			Informal			Disapproved			Closed		
	FY 1979	FY 1980	Percent Change	FY 1979	FY 1980	Percent Change	FY 1979	FY 1980	Percent Change	FY 1979	FY 1980	Percent Change
Arson	162	142	- 12.3	30	59	+ 96.7	10	15	+ 50.0	137	95	- 30.7
Assault	1,910	1,822	- 4.6	624	769	+ 23.2	457	496	+ 8.5	2,381	2,287	- 3.9
Auto Theft/Unauth. Use	619	849	+ 3.7	137	227	+ 65.7	79	117	+ 48.1	409	585	+ 43.0
Burglary/B & E	3,198	2,941	- 8.0	489	747	+ 53.3	186	159	- 9.1	1,555	1,490	- 4.2
Larceny	1,842	1,842	0.0	728	1,039	+ 42.7	248	359	+ 44.8	2,256	2,410	+ 7.1
Robbery	497	364	- 26.8	47	90	+ 91.4	32	20	- 37.5	146	134	- 8.2
Disorderly Conduct	291	248	- 14.8	152	170	+ 11.8	120	128	+ 6.7	363	932	+ 8.0
Sex Offense	99	135	+ 36.4	25	43	+ 72.0	21	17	- 19.0	32	54	+ 34.1
Vandalism	603	722	+ 19.7	477	593	+ 24.3	227	240	+ 5.7	1,274	1,294	+ 1.6
Narcotics Violation	592	647	+ 9.3	379	532	+ 40.4	157	196	+ 24.8	1,905	2,007	+ 5.4
Glue Sniffing	51	56	+ 9.8	11	15	+ 36.4	2	18	+ 800.0	29	50	+ 72.4
Alcoholic Beverage Viol.	92	92	0.0	73	151	+ 106.8	37	37	0.0	611	793	+ 29.8
Shoplifting	843	902	+ 7.0	820	1,292	+ 57.6	97	176	+ 81.4	2,303	2,564	+ 11.3
Purse Snatching	35	49	+ 40.0	11	23	+ 109.1	1	8	+ 700.0	13	20	+ 53.8
Firearms Violation	208	173	- 16.8	62	105	+ 69.4	34	52	+ 52.9	306	299	- 2.3
Rec/Poss Stolen Goods	150	110	- 26.7	62	78	+ 25.8	31	22	- 29.0	207	148	- 28.5
Trespassing	197	227	+ 15.2	201	258	+ 28.4	84	196	+ 133.3	964	974	+ 1.0
False Fire Alarm	27	41	+ 51.9	24	49	+ 104.2	2	11	+ 450.0	76	63	- 17.1
Violation of Supervision	54	74	+ 37.0	1	1	- 100.0	1	1	- 100.0	5	1	- 80.0
Other	1,235	1,358	+ 10.0	531	713	+ 34.3	278	367	+ 32.0	2,268	2,326	+ 4.4
<b>Total Delinquent</b>	<b>12,905</b>	<b>12,794</b>	<b>- 0.9</b>	<b>4,864</b>	<b>6,953</b>	<b>+ 42.9</b>	<b>2,104</b>	<b>2,644</b>	<b>+ 25.7</b>	<b>17,784</b>	<b>18,526</b>	<b>+ 4.2</b>
Runaway	153	117	- 23.5	169	215	+ 27.2	67	105	+ 56.7	1,155	1,074	- 7.0
Truancy	111	58	- 47.7	226	268	+ 18.6	46	53	+ 15.2	577	442	- 23.4
Ungovernable	423	172	- 59.3	410	551	+ 34.4	105	117	+ 11.4	1,355	1,062	- 21.6
<b>Total CINS</b>	<b>687</b>	<b>347</b>	<b>- 49.5</b>	<b>805</b>	<b>1,034</b>	<b>+ 28.5</b>	<b>218</b>	<b>275</b>	<b>+ 26.1</b>	<b>3,087</b>	<b>2,578</b>	<b>- 16.5</b>
Neglect	317	390	+ 23.0	4	4	- 100.0	4	7	+ 75.0	28	19	- 32.1
Dependency	747	722	- 3.3	23	8	- 65.2	14	10	- 28.6	60	71	+ 18.3
Dependency & Neglect	364	313	- 14.0	6	14	+ 133.3	3	11	+ 266.7	16	39	+ 143.8
Mentally Handicapped	21	43	+ 104.8	2	2	- 100.0	1	1	- 100.0	2	5	+ 150.0
<b>Total CINA</b>	<b>1,449</b>	<b>1,468</b>	<b>+ 1.3</b>	<b>33</b>	<b>24</b>	<b>- 27.3</b>	<b>22</b>	<b>28</b>	<b>+ 27.3</b>	<b>106</b>	<b>134</b>	<b>+ 26.4</b>
Special Proceedings	45	40	- 11.1									
<b>GRAND TOTAL</b>	<b>14,786</b>	<b>14,649</b>	<b>- 0.9</b>	<b>5,702</b>	<b>8,011</b>	<b>+ 40.5</b>	<b>2,344</b>	<b>2,947</b>	<b>+ 25.7</b>	<b>20,977</b>	<b>21,238</b>	<b>+ 1.2</b>

TABLE 13

## TOTAL CASES HANDLED BY THE MARYLAND JUVENILE SERVICES ADMINISTRATION

BY COUNTY AND PARENTAL STATUS - FISCAL 1980

Parental Status —	Parents Living Together	Mother Deceased	Father Deceased	Both Parents Deceased	Parents Separated	Parents Divorced	Parents Unmarried	Other	Information Not Provided	Total
<b>REGIONS</b>										
1. DORCHESTER	83	4	16		49	89	42		1	284
SOMERSET	38	2	6	3	24	35	13			121
WICOMICO	147	10	29	4	64	141	30	1	8	434
WORCESTER	566	5	45	2	28	187	6	1	8	848
2. CAROLINE	73	6	6	1	18	35	19	5	66	229
CECIL	452	8	38	2	38	177	11	3	15	744
KENT	77	1	11		12	45	18			164
QUEEN ANNE'S	76	2	5	2	45	24	11	1	14	180
TALBOT	131	5	7	4	7	70	38	4	5	271
3. BALTIMORE	3,420	46	149	8	487	138	140	28	2,138	6,554
HARFORD	777	24	70	7	68	404	37	12	20	2,419
4. ALLEGANY	216	8	11	2	43	122	4	1	45	452
GARRETT	154	1	2		4	42	1		9	213
WASHINGTON	281	4	15	1	42	75	14	2	216	650
5. ANNE ARUNDEL	969	14	38	4	351	161	22	37	2,224	3,820
6. MONTGOMERY	980	35	50	10	124	353	31	8	566	2,157
7. PRINCE GEORGE'S	3,453	128	328	44	1,492	2,162	387	128	667	8,789
8. BALTIMORE CITY	3,005	181	255	33	6,108	550	765	1,701	2,046	14,644
9. CALVERT	398	8	20		38	105	24		22	615
CHARLES	670	29	56	5	127	142	16	10	79	1,134
ST. MARY'S	263	16	55		24	126	31		70	585
10. CARROLL	329	11	28	3	47	133	14	3	128	696
FREDERICK	431	18	53	5	54	202	59	1	96	919
HOWARD	439	9	17	1	42	104	1	1	309	923
STATE	17,428	575	1,310	141	9,336	5,622	1,734	1,947	8,752	46,845

TABLE 19

## TOTAL CASES HANDLED BY THE MARYLAND JUVENILE SERVICES ADMINISTRATION

BY COUNTY AND TYPE OF GUARDIAN - FISCAL 1980

REGIONS	Both Parents	Mother	Father	Mother and Step- Father	Father and Step- Mother	Foster Home	Other Family Home	Insti- tution	Non- Relatives	Alone	Out-of State Insti- tution	Other	Infor- mation Not Provided	Total
1. DORCHESTER	80	123	14	19	3	2	25	2				6	10	284
SOMERSET	39	42	2	14	7	2	11					2	2	121
WICOMICO	144	167	23	37	8	5	27	3				7	13	434
WORCESTER	553	149	38	43	8	4	15	8				5	25	848
2. CAROLINE	72	53	18	4	3	7	7					3	62	229
CECIL	444	126	34	48	14	8	10	6				20	34	744
KENT	77	46	5	18		2	16							164
QUEEN ANNE'S	74	50	19	15	2	4	6	1				1	8	180
TALBOT	126	74	25	9	2	5	13	6				8	3	271
3. BALTIMORE	3,384	2,104	364	45	8	30	55	41				47	476	6,554
HARFORD	759	286	63	107	24	23	70	22				15	50	1,419
4. ALLEGANY	205	110	9	23	4	28	16	7				7	43	452
GARRETT	143	35	4	5		6	9					1	10	213
WASHINGTON	271	210	30	43	9	13	28	7				25	14	650
5. ANNE ARUNDEL	984	430	113	73	17	4	13					33	2,153	3,820
6. MONTGOMERY	977	395	72	71	16	5	49	14				13	545	2,157
7. PRINCE GEORGE'S	3,371	3,215	459	527	101	187	374	65				58	432	8,789
8. BALTIMORE CITY	3,071	7,510	685	301	142	53	439	38				464	1,941	14,644
9. CALVERT	372	116	16	30	2	26	18	20				4	11	615
CHARLES	658	277	77	32	5	9	29	9				13	25	1,134
ST. MARY'S	254	138	35	52	11	8	20	4				7	56	585
10. CARROLL	319	165	34	57	13	29	41	6				17	15	696
FREDERICK	428	184	40	93	16	8	37	6				5	104	919
HOWARD	438	245	106	24	10	12	24	5				7	52	923
STATE	17,243	16,250	2,285	1,690	425	480	1,352	268				768	6,084	46,845

TABLE 20

## PART I OFFENSES VS OTHER DELINQUENT OFFENSES: FISCAL 76 - FISCAL 80

Fiscal Year	Part I Offenses*		Other Delinquent Offenses		Total
	N	%	N	%	
1976	22,767	45.7	27,031	54.3	49,798
1977	20,404	47.5	22,550	52.5	42,954
1978	19,252	47.7	21,079	52.3	40,331
1979	18,014	47.8	19,643	52.2	37,657
1980	18,757	45.8	22,160	54.2	40,917

\* Includes the following offense categories: assault, auto theft/ unauthorized use, burglary/breaking and entering, larceny, and robbery.

TABLE 21  
SOURCES OF REFERRAL OF CHILDREN IN NEED OF SUPERVISION  
FISCAL 1976 - FISCAL 1980

Referral Source	Fiscal Year				
	1976	1977	1978	1979	1980
Police	1,624 (26.6)	1,709 (31.1)	1,239 (25.7)	1,361 (28.4)	1,177 (27.8)
Department of Education	696 (11.4)	622 (11.3)	752 (15.6)	608 (12.7)	468 (19.3)
Parents/Relative	3,523 (57.7)	2,887 (52.6)	2,510 (52.2)	2,567 (53.5)	2,419 (57.1)
Social Services Administration	108 (1.8)	95 (1.7)	136 (2.8)	109 (2.3)	20 (0.5)
Other Social Agency	26 (0.4)	43 (0.8)	50 (1.0)	37 (0.8)	27 (0.6)
Citizen	33 (0.5)	19 (0.3)	13 (0.3)	21 (0.4)	16 (0.4)
Other	123 (2.0)	115 (2.1)	113 (2.3)	94 (2.0)	107 (2.5)
Total	6,133	5,490	4,813	4,797	4,234

COMMUNITY  
SERVICES

## COMMUNITY-BASED SERVICES

Placements in community-based programs may be either residential or non-residential. Residential admissions include emergency shelter care placements or planned placements in private group homes, foster homes, residential treatment facilities, the Maryland Youth Residence Center, the Good Shepherd Center, or three state-operated group homes. Non-residential community programs include the Arthur G. Murphy Sr. Youth Service Center in Baltimore, Youth Service Bureaus, and Youth Diversion Programs. Several programs for runaways are also categorized among community programs, since they provide temporary shelter to youngsters.

### Purchase of Care

Placements in purchase of care facilities--private residential placements in group homes, specialized treatment facilities, foster care, and emergency shelter care--numbered 2,820 during fiscal 1980. This represented a decline of 18% from the 3,421 placements during fiscal 1979. This decline was accounted for solely by emergency placements which showed a reduction from 2,476 cases during fiscal 79 to 1,852 cases during fiscal 80. Private residential (non emergency) placements actually increased from 945 during fiscal 1979 to 968 during fiscal

### Good Shepherd Center

The Good Shepherd Center, a therapeutic facility for girls, had 76 admissions from the Juvenile Services Administration during fiscal 80. This represented a decrease of 34%. Baltimore City accounted for 29 admissions which was 39% of the total. Prince George's County accounted for 14 admissions, 18% of the total. The age range of girls admitted was from thirteen to seventeen years with the median age at admission being fifteen.

### State-Owned Group Homes

There were 82 admissions at the three state-owned group homes during fiscal 80--an increase of 23 admissions from the 59 cases reported during fiscal 79. The age range at admission was from twelve to fifteen with the median at approximately fifteen years of age.

### The Maryland Youth Residence Center

The Maryland Youth Residence Center, a residential treatment facility for boys, reported 29 admissions during fiscal 80. This represented a decrease of 34% from the 44 admissions during fiscal 79. The age range was from eleven to fourteen; a total of 21 of the 29 admissions involved youngsters who were thirteen years of age.

### Arthur G. Murphy, Sr. Youth Service Center

The Arthur G. Murphy, Sr. Youth Service Center is a non-residential day program offering specialized services to delinquent youth. During fiscal 1980, there were 263 admissions, an increase of 49% from the 176 admissions reported for fiscal 1979. Of the 263 admissions, 232, which was 88% of the total, involved males. The age range at time of admission was



from fifteen through eighteen. Slightly over 50% of those admitted were sixteen at time of admission.

#### Youth Services Bureaus

Youth Services Bureaus in Maryland are community-based agencies which provide services to youth on a voluntary basis. The primary purpose of those community operated programs is juvenile delinquency prevention. Seventy-five percent of the funds required to operate Youth Services Bureaus are provided by the State of Maryland through grants from the Juvenile Services Administration. The remaining 25% of the funds are certified by local units of government.

During fiscal 1980, a reported 8,767 individuals were served by Maryland's Youth Services Bureaus. A demographic description of the clients indicates that approximately 59% were male; approximately 77% were white; 23%, black; and less than 1%, of "other" races. Informal counseling and information/referral were among the most frequently provided services during fiscal 1980.

#### Runaway Homes

Runaway homes are locally-controlled, voluntary human service programs and facilities. The purpose of these programs is to provide temporary shelter to runaway or otherwise homeless youths, aged twelve to seventeen. Services include but are not limited to temporary shelter, emergency service needs, short-term individual, group and family counseling, youth advocacy, aftercare, follow-up, information and referral, outreach, intake, and crisis intervention. Funding is primarily through the Federal Office of Youth Development. Other sources of funding are the Juvenile Services Administration, United Way, foundation grants, donations, and fees.

During fiscal 1980, 1,216 youths received intake at runaway homes. Of these youths, 1,077 were sheltered and 886 were positively placed.

#### Diversion Programs

During fiscal 1980, a total of 1,346 counseled cases were served by Baltimore City's Diversion Programs. In addition, 244 youths were served by New Direction, a diversion program for youthful offenders in Prince George's County.

Baltimore City's programs were: Pre-Trial Intervention, Baltimore Urban League, Community Organized to Improve Life, East Baltimore Youth Diversion, and Southeast Community Organization. Most of the youths serviced by these programs were referred by the Juvenile Services Administration. The majority of the youths were male (81%). Of the 1,346 enrollees, 1,086 were black (79%), 273 were white (20%), and four were youths of "other" races (less than 1%). The most frequently listed offense was "burglary/breaking and entering" with 236 cases, followed by "assault" with 184 cases, "larceny" with 172 cases, "shoplifting" with 116 cases, and "assault/robbery" with 90 cases.

TABLE 22  
 COMMUNITY AND RESIDENTIAL EXPENDITURES  
 FISCAL 1976-1980

TYPE OF EXPENDITURE	FISCAL YEAR				
	1976	1977	1978	1979	1980
Good Shepherd Center	\$ 868,106	\$ 952,436	\$ 965,423	\$1,009,543	\$ 1,049,925
Purchase of Care	\$4,826,722	\$5,045,029	\$5,543,910	\$5,658,156	\$ 6,269,300
State-Owned Group Homes	\$ 254,846	\$ 252,676	\$ 293,008	\$ 324,376	\$ 305,290
Md. Youth Residence Center	\$ 396,300	\$ 353,059	\$ 374,838	\$ 371,269	\$ 422,282
Program Direction*	\$ 81,834	\$ 67,122	\$ 72,646	\$ 90,977	\$ 86,448
Youth Service Bureaus	\$ 790,493	\$1,018,418	\$1,111,332	\$1,169,903	\$ 1,174,760
Youth Service Center	\$ 360,030	\$ 316,992	\$ 346,164	\$ 375,248	\$ 369,099
Title XX**		\$ 41,361	\$ 48,686	\$ 39,958	\$ 47,791
Community Evaluations***					\$ 693,758
Differential Group Home and Treatment Project			\$ 20,435	\$ 19,040	\$ 3,942
<b>Total</b>	<b>\$7,524,331</b>	<b>\$8,047,093</b>	<b>\$8,776,442</b>	<b>\$9,058,370</b>	<b>\$10,422,595</b>

\* Includes salaries of individuals administering certain community programs along with operating expenses.  
 \*\* This figure does not include all of Title XX funding. Title XX funds are also distributed under "purchase of care" and in the Court Services budget.  
 \*\*\* In lieu of the closing of the Maryland Children's Center.

TABLE 23  
 COMMUNITY RESIDENTIAL PLACEMENTS  
 NUMBER OF ADMISSIONS  
 FISCAL 1971-1980

Fiscal Year	Good Shepherd Center	Purchase of Care		State-Owned Group Homes	Maryland Youth Residence Center	Total
		Residential	Emergency			
1971	131	276		46		453
1972	87	601	539	60	36	1,323
1973	85	850	1,068	82	35	2,120
1974	86	1,184	1,987	76	35	3,368
1975	91	1,067	2,794	45	22	4,019
1976	98	1,168	3,147	72	46	4,531
1977	115	1,047	2,643	74	41	3,920
1978	141	1,210	2,737	67	64	4,219
1979	120	945	2,476	59	44	3,644
1980	76	968	1,852	82	29	3,007

14

TABLE 24  
 RESIDENTIAL AND EMERGENCY PLACEMENTS BY SEX AND COUNTY  
 FISCAL 1980

REGIONS	Private Residential Placements			Emergency Placements		
	Male	Female	Total	Male	Female	Total
1. DORCHESTER SOMERSET WICOMICO WORCESTER	6 1 8 4	  2 2	6 1 10 6	18 9 14 26	1 1 8 28	19 10 22 54
2. CAROLINE CECIL KENT QUEEN ANNE'S TALBOT	8 27 2 4 15	  5  2	8 32 2 4 17	8 23 1 6 16	1 7  2 12	9 30 1 8 28
3. BALTIMORE HARFORD	21 15	18 2	39 17	47 20	49 6	96 26
4. ALLEGANY GARRETT WASHINGTON	15 5 22	16 3 19	31 8 41	12 1 22	16 2 20	28 3 42
5. ANNE ARUNDEL	73	17	90	132	49	181
6. MONTGOMERY	77	27	104	121	137	258
7. PRINCE GEORGE'S	109	43	152	208	174	382
8. BALTIMORE CITY	222	80	302	359	184	543
9. CALVERT CHARLES ST. MARY'S	1 14 9	8 2 5	9 16 14	6 15 22	14 21 8	20 36 30
10. CARROLL FREDERICK HOWARD	9 14 17	 5 14	9 19 31	4 3 16	1  2	5 3 18
STATE	698	270	968	1,109	743	1,852

42

TABLE 24 A  
 PRIVATE RESIDENTIAL PLACEMENTS  
 TYPE OF SERVICES BY COUNTY AND REGION  
 FISCAL 1980

REGIONS	Private Residential Placements			
	Basic Service	Intermediate Service	Full Service	Total
1. DORCHESTER SOMERSET WICOMICO WORCESTER	1  1	4 1 6 4	1  4 1	6 1 10 6
2. CAROLINE CECIL KENT QUEEN ANNE'S TALBOT	1 2  2	6 20 1 3 15	1 10 1 1	8 32 2 4 17
3. BALTIMORE HARFORD	15 4	13 8	11 5	39 17
4. ALLEGANY GARRETT WASHINGTON	16 4 21	8 1 9	7 3 11	31 8 41
5. ANNE ARUNDEL	33	37	20	90
6. MONTGOMERY	20	29	55	104
7. PRINCE GEORGE'S	41	82	29	152
8. BALTIMORE CITY	125	131	46	302
9. CALVERT CHARLES ST. MARY'S	1 3 3	5 13 10	3  1	9 16 14
10. CARROLL FREDERICK HOWARD	3 3 18	5 12 8	1 4 5	9 19 31
STATE	317	431	220	968

43

TABLE 25  
RESIDENTIAL AND EMERGENCY PLACEMENTS BY RACE AND COUNTY COURT  
FISCAL 1980

REGIONS	Private Residential Placements				Emergency Placements				Good Shepherd Center			
	White	Black	Other	Total	White	Black	Other	Total	White	Black	Other	Total
1. BORCHESTER SOMERSET WICOMICO WORCESTER	3 1 6 1	3  4 5		6 1 10 6	12 6 16 49	7 4 5 5		19 10 22 54	1 1			1 1
2. CAROLINE CECIL KENT QUEEN ANNE'S TALBOT	6 32 2 4 9	2   8		8 32 2 4 17	9 27 1 6 24	3  2 4		9 30 1 8 28	4	2		6
3. BALTIMORE HARFORD	33 16	6 1		39 17	85 26	11		96 26	6	3		9
4. ALLEGANY GARRETT WASHINGTON	30 8 38	1  3		31 8 41	27 3 39	1  3		28 3 42				
5. ANNE ARUNDEL	88	2		90	173	8		181	5			5
6. MONTGOMERY	80	23	1	104	210	41	7	258	5	2		7
7. PRINCE GEORGE'S	99	53		152	225	154	3	382	8	6		14
8. BALTIMORE CITY	98	202	2	302	204	335	4	543	14	15	1	30
9. CALVERT CHARLES ST. MARY'S	9 10 11	6 3		9 16 14	20 34 28	2 2		20 36 30	1			1
10. CARROLL FREDERICK HOWARD	9 16 25	3 4	2	9 19 31	5 1 18	2		5 3 18	1 1			1 1
STATE	634	329	5	968	1,248	590	14	1,852	47	28	1	76

44

TABLE 26

ARTHUR G. MURPHY YOUTH SERVICE CENTER  
ADMISSIONS BY AGE AND SEX

AGE	SEX		
	MALE	FEMALE	TOTAL
15	25	2	27
16	121	14	135
17	75	11	86
Over 17	11	4	15
TOTAL	232	31	263

TABLE 27

PLACEMENTS IN GOOD SHEPHERD CENTER, MARYLAND YOUTH  
RESIDENCE CENTER, AND STATE-OWNED GROUP HOMES BY AGE

Age	Placement			Total
	Good Shepherd Center	Maryland Youth Residence Center	State-Owned Group Homes	
Under 12		1		1
12		5	1	6
13	8	21	9	38
14	24	2	9	35
15	20		31	51
16	20		24	44
17	40		5	9
Over 17 or Unknown			3	3
Total	76	29	82	187

TABLE 28

CLIENTS SERVED BY TYPE OF SERVICE AT YOUTH SERVICES BUREAUS

FISCAL 1980

Type of Service	Number Cases	% of Total
Formal Counseling: Individual Family and Group Cases*	3,516	5.1%
Informal Counseling Clients	10,701	15.6%
Information/Referral Services	6,809	9.9%
Crisis Intervention Services	1,028	1.5%
Optional Services**	46,472	67.8%
Total	68,526	100.0%

\* 8,767 individual people served.

\*\* Testing and assessment leisure time activities, job related services, tutoring, etc.

TABLE 29

DEMOGRAPHIC CHARACTERISTICS OF CLIENTS

SERVED BY YOUTH SERVICES BUREAUS

FISCAL 1980

Sex		Race		
Male	Female	Black	White	Other
58.6%	41.4%	22.6%	76.6%	0.8%

Age	
Years	%
12	12.4
13	7.9
14	40.6
15	13.1
16	11.9
17	7.4
18	6.7

TABLE 30  
 YOUTH SERVED BY MARYLAND RUNAWAY PROGRAMS  
 FISCAL 1980

Program	No. of Youth Receiving Intake	No. of Youth Sheltered	Youth Positively Placed	
			No.	%
Fellowship of Lights	314	298	240	80%
Link	95	38	32	84%
Open Door	176	176	158	90%
S.A.Y.S.	225	207	171	83%
Second Mile	303	273	225	82%
S.T.A.Y.	103	85	60	71%
<b>Total</b>	<b>1,216</b>	<b>1,077</b>	<b>886</b>	<b>82%</b>

TABLE 31  
 TOTAL COUNSELED CASES SERVED BY YOUTH DIVERSION  
 PROGRAMS IN BALTIMORE CITY BY LOCATION,  
 RACE, SEX, AND OFFENSE

FISCAL YEAR 1980

Category of Data	Diversion Program					Total
	Pre-Trial Intervention	Baltimore Urban League	Community Organized to Improve Life	East Baltimore Youth Diversion	Southeast Community Organization	
Total Served:	470	220	201	270	185	1346
Race:						
Black	399	220	129	261	60	1069
White	71		72	9	121	273
Other					4	4
Sex:						
Male	385	185	156	216	144	1086
Female	85	35	45	54	41	260
Offense: *						
Assault	68	29	25	43	19	184
Assault/ Robbery	33	16	8	31	2	90
Burglary/B&E	90	47	25	44	30	236
Larceny	69	30	20	38	15	172
Shoplifting	41	14	28	26	7	116
Dis. Conduct	38	8	4	13		63
Vandalism	15	10	15	10	9	59
Unauth. Use	31	7	4		2	44
Poss. Deadly Weapon	35	4	6	7	6	58
Narcotics Violation	50		7		1	58
Other or Unknown	96	45	55	50	87	333
Trespassing	14	12	4	8	7	45

\* May include more than one offense in some cases.



TABLE 32

NEW DIRECTION: COMMUNITY DIVERSION OF  
YOUTHFUL OFFENDERS' PROGRAM  
(PRINCE GEORGE'S CO., FISCAL 1980)

Total Number Served	Number of Males	Number of Females
244	193	51

TABLE 33  
COMMUNITY DETENTION PROGRAMS

Program	Number Accepted	Reporting Period
Baltimore City	820	CY 1980
Harford County*	65	CY 1980
Noyes Center	82	FY 1980
Prince George's County (Boys' Village)	210	October 1, 1979 to September 31, '80
Anne Arundel House Detention	93	FY 1980

\* This program is being funded through an LEAA grant.

Community detention is an alternative to detaining youth in detention centers. It provides youth with intensive supervision in their own home or a surrogate home for the period between initial court appearance and disposition. The objectives of community detention are to keep the youth trouble-free and available to the court.

INSTITUTIONAL  
SERVICES

ADMISSIONS TO MARYLAND'S JUVENILE INSTITUTIONS

Maryland Training School for Boys

The Maryland Training School, a training school for boys which has a rated capacity of 301, reported 3,229 admissions during fiscal 1980. Of these, 647 were commitments and 2,582 were detentions. Commitments increased by 32 (5%) over fiscal 1979 figures while detentions increased by 214 (9%). The average length of stay for commitments was 6.9 months, while the average length of stay for detentions was 18.7 days. Of the 3,229 admissions, 67% involved residents of Baltimore City. Of the 647 commitments, 601 or 93% involved youths aged from fifteen through seventeen. A total of 407 commitments or 63% involved black youths.

The largest offense category for both commitments and detentions was "burglary/breaking and entering." Of the 647 commitments, 167 (26%) involved this offense; for detentions, 642 out of 2,582 cases or 25% involved "burglary/breaking and entering." "Assault" was the next more frequent offense category for commitments and detentions with 112 cases and 501 cases, respectively.

Montrose School

Montrose, a co-educational training school with a rated capacity of 255, had 1,095 admissions during fiscal 1980. These admissions included 532 commitments and 563 detentions. Commitments decreased by only two from fiscal 1979 while detentions increased slightly (from 547 to 563). The average length of stay for commitments was 6.8 months. For detentions, the average length of stay was 21.7 days.

As in the previous years, virtually all of the detentions involved females: out of 563 detentions, 560 involved females. Of the 632 commitments, 404 or 64% involved males.

Baltimore City residents accounted for 48% of the commitments and 36% of the detentions. Prince George's County had the next highest numbers of commitments and detentions of residents with 18% and 22%, respectively.

In fiscal 1980, 55% of the commitments involved black youths and 45% white youths. In addition, 70% or 370 of the 532 commitments involved youths of fourteen or fifteen years of age. "Burglary/breaking and entering" was the most frequently reported major reason for commitments with 117 cases (33% of the total). For detentions, "assault" was the most frequently reported major reason for commitment with 90 cases (16% of the total).

Boys' Village

Boys' Village, a multi-purpose facility with a rated capacity of 56, reported 1,411 detentions during fiscal 1980. This represented a decrease of 12% from the figure of 1,602 reported during fiscal 1979.

Residents of Prince George's County accounted for the majority of detentions--a total of 927 out of 1,411 or 66%. Out-of-state residents, primarily from the District of Columbia, accounted for 351 detentions. An additional 233 youths were detained in the center's holdover facility.

Of the 1,411 youths detained, 843 (60%) were black and 566 (40%) were white (two youths were of "other" races). A total of 72% of the detainees were between fifteen and seventeen years of age. "Burglary/breaking and entering" was the major charge in 21% of the detentions and was the number one major reason for being detained. "Robbery" accounted for 205 detentions.

#### Youth Centers

The Youth Centers have a rated capacity of 140. During fiscal 1980, there were 273 commitments at the Youth Centers, an increase of 43 commitments or 19% over the fiscal 1979 figure. Baltimore City accounted for 41 commitments among residents, followed by Prince George's County with 40, and Montgomery County with 29.

Of the 273 commitments, all involved youths fifteen years of age or older. A total of 210 or 77% involved white youths; 22%, black youths; and less than one percent, youths of "other" races. "Burglary/breaking and entering" was involved in 72 commitments, 26% of the total; a distant second was "assault" which was involved in 30 commitments.

#### Waxter Children's Center

The Waxter Children's Center, a detention facility with a rated capacity of 40, reported 967 detentions during fiscal 1980. This represented an increase of 16% over the 835 detentions reported during fiscal 1979. Nearly half of the admissions (462 or 48%), were accounted for by residents of Baltimore City. Anne Arundel County accounted for 207 admissions among its residents.

Of the 967 detentions, 454 (47%) involved white youths; 507 (52%), black youths; and less than one percent, youths of "other" races. A total of 80% of the detentions involved youths in the age grouping of fifteen through seventeen.

#### Alfred D. Noyes Center

The Alfred D. Noyes Center is a detention facility with a rated capacity of 30. During fiscal 1980, there were 646 detentions\* with an average length of stay of 17.2 days.

Of the 646 detentions, 389 involved Montgomery County residents. A distant second was Washington County, with 88 detentions among its residents. The Noyes Center had a total of 56 detentions of out-of-state residents. "Burglary/breaking and entering" with 97 cases and "larceny" with 83 cases headed the list of the most frequent reasons for detention.

#### Cumberland Holdover Facility

The Cumberland Holdover Facility with a capacity of six had 253 detentions during fiscal 1980. This represented a decrease of 7% from the 271 detentions during fiscal 1979. Of the 253 detentions, 151 involved residents of Allegany County and 56 involved residents of Garrett County.

\* This includes 82 detainees who eventually were placed in Noyes' Community Detention Program.

#### Hagerstown Holdover Facility

The Hagerstown Holdover Facility with a capacity of four had 211 detentions during fiscal 1980. Of these, 180 or 85% involved residents of Washington County. A total of 20 detentions involved out-of-state residents.

TABLE 34

MARYLAND JUVENILE SERVICES ADMINISTRATION  
SUMMARY OF INSTITUTION EXPENDITURES  
FISCAL 1971-1980

Fiscal Years	Training Schools	Detention Centers	Youth Centers*	Total
1971	\$ 7,916,373	\$ 1,537,667	\$ 768,821	\$10,222,861
1972	8,700,095	1,782,315	882,241	11,364,651
1973	8,741,551	1,752,665	836,074	11,330,290
1974	7,981,170	1,832,283	831,407	10,644,860
1975	7,426,182	2,095,326	991,259	10,512,767
1976	6,277,419	4,190,101	1,101,191	11,568,711
1977	6,420,088	4,641,308	1,086,488	12,147,884
1978	7,101,322	5,098,427	1,197,836	13,397,585
1979	7,871,204	4,516,086	1,255,258	13,642,548
1980	8,757,351	3,432,669	1,463,388	13,653,408

TABLE 35

SUMMARY OF INSTITUTION ADMISSIONS  
FISCAL 1971-1980

Fiscal Years	Training School Admissions			Detention * Center Admissions	Youth ** Centers Admissions
	Commitments	Detentions	Total		
1971	1,790	1,190	2,980	4,652	348
1972	1,801	1,843	3,644	4,131	288
1973	1,439	2,807	4,246	3,323	276
1974	1,131	4,118	5,249	2,440	278
1975	1,255	4,544	5,799	2,477	346
1976	1,338	2,640	3,978	3,797	283
1977	1,323	2,462	3,785	4,195	268
1978	1,161	2,308	3,469	4,178	235
1979	1,149	2,915	4,064	3,715	230
1980	1,179	3,145	4,324	3,024	273

\* Includes the following facilities: Waxter Center, Noyes Center, and Boys' Village.

\*\* Formerly known as "Forestry Camps".

## ADMISSIONS TO MARYLAND'S JUVENILE INSTITUTIONS

## FISCAL YEAR COMPARISONS

1979 - 1980

Institution	Fiscal Year 1979	Fiscal Year 1980	Percent Change
<u>Maryland Training School</u>			
Commitments (Male)	615	647	+ 5.2
Detentions (Male)	2,368	2,582	+ 9.0
Total Admissions	2,983	3,229	+ 8.2
<u>Montrose School</u>			
Commitments			
Male	393	404	+ 2.8
Female	141	128	- 0.9
Detentions			
Male	5	3	- 40.0
Female	542	560	+ 3.3
Admissions			
Male	398	407	+ 2.3
Female	683	688	+ 0.7
Total Admissions	1,081	1,095	+ 1.3
<u>Boys' Village</u>			
Detentions (Male)	1,602	1,411*	- 11.9
Total Admissions	1,602	1,411	- 11.9
<u>Youth Centers</u>			
Commitments (Male)	230	273	+ 18.7
Total Admissions	230	273	+ 18.7
<u>Waxter Children's Center</u>			
Male	835	967	+ 15.8
Female			
Total Admissions	835	967	+ 15.8
<u>Noyes Center</u>			
Male	547	548	+ 0.2
Female	130	98	- 24.6
Total Admissions	677	646	- 4.6

\* Does not include 233 holdover detentions.

TABLE 37

ADMISSIONS TO MARYLAND'S TRAINING SCHOOLS AND YOUTH CENTERS  
BY COUNTY OF RESIDENCE AND COUNTY OF ADMITTING COURT  
FISCAL 1980

	Maryland Training School		Montrose School		Youth Centers		
	County of Residence	Admitting Court	County of Residence	Admitting Court	County of Residence	Admitting Court	
Region 1.	Dorchester	22	21	3	3	4	5
	Somerset	5	6	1	1	2	2
	Wicomico	31	31	3	6	4	4
	Worcester	5	4	9	11		
Region 2.	Caroline	7	5	2	2	3	2
	Cecil	40	46	15	19	16	16
	Kent	6	6	2	4	3	3
	Queen Anne's	8	8		1	1	1
	Talbot	19	20	4	7	3	4
Region 3.	Baltimore	259	287	69	99	4	4
	Harford	99	101	12	12	8	8
Region 4.	Allegany	9	18	6	6	16	15
	Garrett	2	3	6	5	3	7
	Washington	10	11	13	11	24	26
Region 5.	Anne Arundel	44	48	46	55	9	10
Region 6.	Montgomery	34	36	36	40	29	35
Region 7.	Prince George's	307	342	223	270	40	45
Region 8.	Baltimore City	2,177	2,151	461	445	41	40
Region 9.	Calvert	3	3	20	23	3	3
	Charles	10	10	8	8	9	9
	St. Mary's	5	5	9	9	9	8
Region 10.	Carroll	42	46	22	20	14	14
	Frederick	9	15	17	19	11	7
	Howard	7	6	19	19	4	5
	Out-of-State	69		89		13	
	State	3,229	3,229	1,095	1,095	273	273

TABLE 35  
 ADMISSIONS TO MARYLAND'S DETENTION FACILITIES  
 BY COUNTY OF RESIDENCE AND COUNTY OF ADMITTING COURT  
 FISCAL 1980

Regions	Boys' Village		Voyes Center		Waxter Center	
	County of Residence	Admitting Court	County of Residence	Admitting Court	County of Residence	Admitting Court
1. Dorchester Somerset Wicomico Worcester	3	3	1	1	15 2 19 3	16 2 19 11
2. Caroline Cecil Kent Queen Anne's Talbot		1	2 1 1	2 1 2	9 3 17	5 4 3 3 15
3. Baltimore Harford	2		9 1	1 1	19 1	25 4
4. Allegany Garrett Washington			6 15 88	8 15 88		2
5. Anne Arundel			5	1	207	229
6. Montgomery	1		389	462	24	31
7. Prince George's	927	1,277	36	26	63	70
8. Baltimore City			1	1	462	451
9. Calvert Charles St. Mary's	29 51 47	27 50 51	1	1	2 1	1
10. Carroll Frederick Howard		2	31 3	2 32 2	1 60	7 69
Out-of-State	351		56		59	
State	1,411	1,411	646	646	967	967

58

TABLE 39  
 COMMITMENTS VS. DETENTIONS AT TRAINING SCHOOLS  
 BY COUNTY OF RESIDENCE AND COUNTY OF ADMITTING COURT  
 FISCAL 1980

REGIONS	BY COUNTY OF RESIDENCE				BY ADMITTING COURT			
	MARYLAND TRAINING SCHOOL		MONTROSE SCHOOL		MARYLAND TRAINING SCHOOL		MONTROSE SCHOOL	
	COMMITTED	DETAINED	COMMITTED	DETAINED	COMMITTED	DETAINED	COMMITTED	DETAINED
1. DORCHESTER SOMERSET WICOMICO WORCESTER	2 8 1	22 3 23 4	1 1 2 4	2 1 5	3 8	21 3 23 4	1 1 2 4	2 4 7
2. CAROLINE CECIL KENT QUEEN ANNE'S TALBOT	3 1 2 6	7 37 5 6 13	2 5 1 2	10 1 2	4 1 2 6	5 42 5 6 14	1 6 3 1 3	1 13 1 4
3. BALTIMORE HARFORD	42 10	217 89	32 6	37 6	57 11	230 90	38 5	61 7
4. ALLEGANY GARRETT WASHINGTON	6 2 8	3 2	6 6 10	3	8 3 9	10 2	6 5 10	1
5. ANNE ARUNDEL	38	6	21	25	43	5	25	30
6. MONTGOMERY	15	19	19	17	16	20	19	21
7. PRINCE GEORGE'S	105	202	97	126	116	226	110	160
8. BALTIMORE CITY	353	1,824	256	205	332	1,819	250	195
9. CALVERT CHARLES ST. MARY'S	9 3	3 1 2	11 4 3	9 4 6	10 2	3 3	11 4 3	12 4 6
10. CARROLL FREDERICK HOWARD	10 3 3	32 6 4	5 11 10	17 6 9	10 3 3	36 12 3	4 11 9	16 8 10
OUT-OF-STATE	17	52	17	72				
STATE	647	2,582	532	563	647	2,582	532	563

TABLE 40  
 ADMISSIONS TO MARYLAND'S JUVENILE INSTITUTIONS BY FACILITY AND OFFENSE  
 FISCAL YEAR 1930

Offense	Walter Children's	Boys' Village	Noyes Center	Maryland Training School		Montrose School		Youth Centers
	Detentions	Detentions	Detentions	Commitments	Detentions	Commitments	Detentions	Commitments
Arson	8	14	10	2	16	3	2	
Assault	195	133	63	112	501	73	90	30
Auto Theft/Unauthorized Use	96	145	47	53	225	39	31	27
Burglary/Breaking & Entering	237	294	97	167	642	117	43	72
Larceny	91	96	33	85	315	62	69	29
Robbery	70	205	22	39	64	22	18	12
Disorderly Conduct	20	16	9	1	42	15	40	2
Sex Offense	8	22	2	6	35	8	12	1
Vandalism	23	26	18	15	33	3	1	12
Narcotics Violation	32	58	23	15	75	9	29	9
Glue Sniffing/Other Inhalents	9	2		4	25	3	3	1
Alcoholic Beverage Violation	14	5	4		3		3	2
Shoplifting	40	126	34	23	108	34	93	11
Purse Snatching	14	3	1	9	32	1		1
Firearms/Deadly Weapon Violation	15	24	5	12	61	5	8	1
Rec/Poss of Stolen Goods	8	15	4	3	17	4	1	1
Trespassing	5	26	4	5	26	3	13	2
False Fire Alarm		1					1	
Runaway*		2	2				1	
Truancy*								
Ungovernable*	1	2	2					
Other	20	96	89	24	223	15	25	12
Special Proceedings		1			1		2	
Violation of Supervision	61	99	127	72	138	116	78	48
Total	967	1,411	646	647	2,582	532	563	273

\* Of the 8 CINS cases detained, 4 were held less than 24 hours.



**CONTINUED**

**1 OF 2**

TABLE 41  
 COMMITMENTS TO MARYLAND'S TRAINING SCHOOLS  
 AND YOUTH CENTERS BY AGE AND RACE

FISCAL 1980

	Age of Juvenile										Total	
	Under 10	10	11	12	13	14	15	16	17	Unknown or > 17	Number	Per - Cent
Maryland Training School												
White						2	38	100	75	21	236	36.5
Black						7	84	177	123	16	407	62.9
Other							1	1	2	4	4	0.6
Total						9	123	278	200	37	647	100.0
Montrose School												
White			1	8	32	77	88	23	10		239	44.9
Black		1	4	9	44	96	108	22	8		292	54.9
Other						1					1	0.2
Total		1	5	17	76	174	196	45	18		532	100.0
Youth Centers												
White							35	83	82	10	210	76.9
Black							15	23	21	2	61	22.3
Other								2			2	0.7
Total							50	108	103	12	273	100.0
Total Commitments												
White			1	8	32	79	161	206	167	31	685	47.2
Black		1	4	9	44	103	207	222	152	18	760	52.3
Other						1	1	3	2		7	0.5
Total		1	5	17	76	183	369	431	321	49	1,452	100.0

TABLE 42  
 AVERAGE LENGTH OF STAY OF COMMITMENTS  
 AT MARYLAND'S TRAINING SCHOOLS AND YOUTH CENTERS  
 FISCAL 1980

Facility	Average Length of Stay (Months)
Maryland Training School	6.9*
Montrose School	6.8*
Youth Centers	7.7

\* To arrive at this figure, 30 days were subtracted from the time span between admission and release for each juvenile. This was done since the release date reflects the time when the rescission order is received, not actually the date the youth leaves the institution. There is an estimated average of 30 days between the release date and the date the rescission order is received.

TABLE 43

AVERAGE LENGTH OF STAY FOR DETENTIONS  
 IN MARYLAND'S JUVENILE INSTITUTIONS\*  
 FISCAL 1980

Institution	Total Releases	Average Length of Stay (Days)
Maryland Training School	2,428	18.7
Montrose	484	21.7
Boys' Village	1,338	25.8
Waxter Children's Center	846	16.1
Noyes Center	633	17.2
Total	5,729	20.1

\* Excludes holdover facilities in Hagerstown and Cumberland.

TABLE 44  
 DETENTIONS AT HOLDOVER FACILITIES BY COUNTY OF RESIDENCE AND DETAINING COURT  
 FISCAL 1980

REGIONS	CUMBERLAND HOLDOVER FACILITY		HAGERSTOWN HOLDOVER FACILITY	
	COUNTY OF RESIDENCE	DETAINING COURT	COUNTY OF RESIDENCE	DETAINING COURT
1. DORCHESTER SOMERSET WICOMICO WORCESTER	1			
2. CAROLINE CECIL KENT QUEEN ANNE'S TALBOT			1	
3. BALTIMORE HARFORD	8 3		2	
4. ALLEGANY GARRETT WASHINGTON	151 56 10	192 54 7	1 180	211
5. ANNE ARUNDEL				
6. MONTGOMERY				
7. PRINCE GEORGE'S	1		2	
8. BALTIMORE CITY	5		1	
9. CALVERT CHARLES ST. MARY'S				
10. CARROLL FREDERICK HOWARD			4	
OUT-OF-STATE	18		20	
STATE	253	253	211	211

63

FEDERAL GRANTS

TABLE 45  
 FEDERAL GRANTS IN OPERATION  
 DURING FISCAL YEAR 1980  
 By Program Year

With the assistance of the Governor's Commission on Law Enforcement and the Administration of Justice, Federal funds were provided under the Omnibus Crime Control and Safe Street Act for the following programs during fiscal year 1980.

	LEAA	STATE*
Juvenile Court Services		
Victim Assistance Pilot Project	\$ 83,599	\$ 9,289
CINS Diagnostic Component - Baltimore City	34,650	3,850
	<u>\$ 118,249</u>	<u>\$ 13,139</u>
Community Services		
Community Detention Program - Harford County	\$ 28,170	\$ 0
Non-Residential Care Supplement Proj. - Balto. Co.	50,000	0
Structured Shelter Care - Northeast Maryland	200,000	22,222
Structured Shelter Care - Region X	143,854	2,667
Structured Shelter Care - Western Maryland	106,146	0
Transportation Corps - Northeast Maryland	46,101	5,122
Utilization of Beds in Community-Based Facilities	42,337	300
Catonsville Group Home	81,500	9,055
CINS Diversion Unit - Anne Arundel County	64,285	7,143
House Detention - Anne Arundel County	33,720	0
Non-Residential Care Supplement Program - Balto. City	104,400	11,600
Transportation Corps - Western Maryland	54,934	6,104
	<u>\$ 955,447</u>	<u>\$ 64,213</u>
Institutional Rehabilitation		
Alternative to Commitment	\$ 20,111	\$ 0
Multi-Functional		
Statewide Network Conference	\$ 26,015	\$ 2,891
Intake Study and Training Project	50,000	5,555
MAJIS	18,806	0
	<u>\$ 94,821</u>	<u>\$ 8,446</u>
TOTAL	<u>\$1,188,628</u>	<u>\$ 85,798</u>

\* This State must contribute in cash a portion of the total cost of most projects funded by the Governor's Commission, with the exception of LEAA's 1979 Juvenile Delinquency money.

A SUMMARY VERSION OF THE FISCAL YEAR 1980  
REPORT OF THE JUVENILE SERVICES ADMINISTRATION IS ALSO AVAILABLE.

**END**