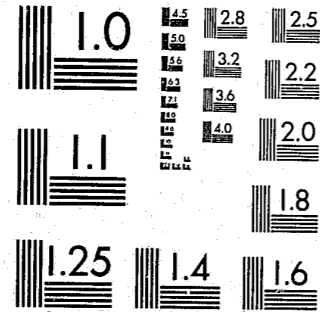


National Criminal Justice Reference Service



This microfiche was produced from documents received for inclusion in the NCJRS data base. Since NCJRS cannot exercise control over the physical condition of the documents submitted, the individual frame quality will vary. The resolution chart on this frame may be used to evaluate the document quality.



MICROCOPY RESOLUTION TEST CHART
NATIONAL BUREAU OF STANDARDS-1963-A

Microfilming procedures used to create this fiche comply with the standards set forth in 41CFR 101-11.504.

Points of view or opinions stated in this document are those of the author(s) and do not represent the official position or policies of the U. S. Department of Justice.

National Institute of Justice
United States Department of Justice
Washington, D. C. 20531

4-23-82

80412

CR sent
3-15-82

ANNUAL ARRESTS AND DISPOSITIONS REPORT

State of New Jersey
Department of Corrections
Division of Policy and Planning

BUREAU OF PAROLE

Whittlesey Road
P. O. Box 7387, Trenton, N. J. 08623
(July 1, 1977 - June 30, 1978)

80412

80412
U.S. Department of Justice
National Institute of Justice
This document has been reproduced exactly as received from the person or organization originating it. Points of view or opinions stated in this document are those of the authors and do not necessarily represent the official position or policies of the National Institute of Justice.
Permission to reproduce this copyrighted material has been granted by
Victor R. D'Ilio
New Jersey Bureau of Parole
to the National Criminal Justice Reference Service (NCJRS)
Further reproduction outside of the NCJRS system requires permission of the copyright owner.

Fred B. Holley, Chief
Bureau of Parole

Victor R. D'Ilio,
Assistant Chief

Sue S. Lindbom,
Senior Parole Officer

INTRODUCTION

The charts and discussion materials presented herein do not reflect information concerning those New Jersey cases paroled out-of-state. Complications which developed as a result of the Bureau of Interstate Services maintaining a separate statistical data base not only have made comparisons to previous years' statistics invalid, but have also somewhat diminished the high degree of accuracy once boasted by the Parole Bureau's statistical data. Efforts continue to regain the overall accuracy of source material, and with the passage of time, comparison to the Bureau's previous years' data will once again be meaningful.

In spite of the difficulties described above, which have contributed to the delay in the compiling and distribution of this report, we feel that the continuing refinement of figures has not created a wide margin of error. Yet, because there are certain inconsistencies, we will make comparisons only where valid.

NCJRS

AUG 07 1981

ACQUISITIONS

ANNUAL ARRESTS AND DISPOSITIONS REPORT

The statistical information presented in this report is intended to serve as a factual indicator of the number, types, and dispositions of arrests of all parolees in New Jersey. We have no similar data on New Jersey Parolees in other States who are no longer the responsibility of the New Jersey Bureau of Parole.

It is beyond the scope of this survey to answer questions about the reasons underlying the results.

Although all of the recorded arrests occurred during the period of July 1, 1977 through June 30, 1978, many were not completely adjudicated until after the close of the fiscal year. Accordingly, the report is prepared one year thereafter in order to record as many dispositions as possible.

These arrests, as reported solely by the components of the Bureau of Parole, resulted from violations of the conditions of parole (Technical Violations), and/or Municipal Ordinances, and/or State or Federal Statutes (New Offenses).

The criterion for recording the data is similar to the Uniform Crime Reporting procedure, i.e. one person, one arrest, regardless of the number of charges lodged.

Specifically, the data in addition to identifying information includes:

- (1) Number of parolees arrested and the number of arrests.
- (2) Disposition of recorded arrests for new offenses.
- (3) Disposition of arrests for technical parole violations.
- (4) Age at time of arrest and length of time on parole when arrested.
- (5) Types of arrests.

As shown in Table #5 the Bureau was responsible for the supervision of 12,753 parolees in the fiscal year 1977-78. There was an average of 8,987 on parole at any given time during the year. (See Table 1).

Conclusions drawn from data presented in this report must be strictly limited to the data presented herein. Comparisons with previous years are not valid as those reports included, within their totals and subtotals, data on numbers and activities of New Jersey cases paroled out of state. This information is no longer available to the Bureau of Parole. However, the following might be concluded:

- (1) Almost three quarters (72%) of the individuals arrested were 21 years of age or older. The 18-20 year old age group accounted for the second highest arrest rate (22%). (Table #4)
- (2) Sixty per cent (60%) of all arrests occurred within the first year on parole, seventy-four per cent (74%) within eighteen months, and ninety-four per cent (94%) within two years. (Table #4)
- (3) Forty-one per cent (41%) of all recorded arrests for new offenses were disposed of as guilty by court action, as compared to the dismissal rate of fifteen per cent (15%). The remaining forty-four per cent (44%) of arrests were not processed for inclusion in the above figures because:
 - a) the disposition was still pending in court.
 - b) maximum sentence expired while awaiting disposition.
 - c) returned as a parole violator before disposition was rendered. (Table #2)
- (4) A total of 3,015 individuals accounted for all of the 5,112 arrests. (Table #1)
- (5) Approximately 1/3 (3,015 out of 8,987) supervised during the fiscal year were arrested. (Table #1)

- (6) Sixty-one per cent (174) of the 285 arrests for technical parole violations resulted in return to the institution as parole violators. (Table #3)
- (7) Only 3.4% (174) of the total number of arrests (5,112) were returned to the institution for violating technical conditions of parole and not requiring court action. (Tables #1 and #3)
- (8) Of the 4,827 arrests for new offenses requiring court action, 8.9% (434) resulted in a court commitment to a penal or correctional institution. (Table #2)

It must be remembered that factors which influence the numbers of violators that are returned to institutions vary. Therefore, statistical comparisons between institutions should be made with caution.

Note: The percentage of those committed by the court, as compared to those returned exclusively for technical reasons, differ substantially, mainly because the screening process employed by the Bureau of Parole eliminates many cases that would otherwise be included as statistical arrests. Not all cases that were reviewed for parole violations resulted in an arrest as is the case with those brought before the court. The Bureau does not keep separate statistics for this, but a conservative estimate would be a figure as high, if not higher, than the number of cases that are brought to the attention of the court.

Parole violators are arrested only after a thorough review of the cases made by supervisory personnel. All of the cases so reviewed do not necessarily result in return. The probable cause hearing process cuts down the figure more and after the hearing the figure is reduced again by the action of the paroling authority who elect not to revoke.

When the overall violation rate is compared to the total number of cases under supervision by the Bureau, the percentage of return is substantially less. As an example, of all the individuals arrested 61% were returned to various institutions by order of a court commitment or as a result of technical violation of parole, as compared to 20% of the average number on parole, or 14% of the total supervised. Stated conversely, 86% of the total number of cases under supervision were "successful," i.e. not returned to an institution. Consequently, the recidivism rate becomes more meaningful when the basis used is clearly defined.

TABLE #1

CASELOAD - ARRESTS AND RETURNED VIOLATORS
(By Institutions)*

7-1-77 thru 6-30-78

INSTITUTIONS*	UNDER SUPERVISION 7/1/77	UNDER SUPERVISION 7/1/78	TOTAL NO. SUPER- VISED 1977-1978	AVERAGE NUMBER ON PAROLE	NO. PAROLEES ARRESTED			NO. OF ARRESTS			COMMITTED TO INSTITUTION***		
					NEW OFFENSES	TECHNICAL VIOLATIONS	TOTAL	NEW OFFENSES	TECHNICAL VIOLATIONS	TOTAL	BY COURT	BY PAROLING AUTHORITY	TOTAL
TSG	13	17	24	16	7	1	8	10	1	11	0	1	1
CIW	302	295	466	329	81	6	87	140	6	146	13	28	41
OS/F	19	24	34	23	2	0	2	2	0	2	0	0	0
TSB	212	218	343	228	134	6	140	213	6	219	38	47	85
YCIA	1,735	1,620	2,635	1,813	873	71	944	1,550	74	1,624	153	455	608
YCIB	1,983	1,749	2,768	2,060	719	63	782	1,190	65	1,255	86	371	457
YRCC	1,487	1,348	2,142	1,583	618	63	681	1,042	64	1,106	76	353	429
SP ****	2,088	2,314	3,586	2,448	408	59	467	563	61	624	47	133	180
PH	35	36	50	36	1	0	1	1	0	1	1	0	1
OS/M	426	433	705	451	78	8	86	116	8	124	20	13	33
TOTALS	8,300	8,054	12,753	8,987	2,921	277	3,198**	4,827	285	5,112	434	1,401	1,835

*Legend -

TSG - Training School for Girls
 CIW - Correctional Institution for Women
 OS/F - Female parolees supervised for other states
 TSB - Training School for Boys
 YCIA - Youth Correctional Institution, Annandale
 YCIB - Youth Correctional Institution, Bordentown
 YRCC - Youth Reception and Correction Center
 SP - State Prison
 PH - Sex offenders paroled from Psychiatric Hospitals
 OS/M - Male parolees supervised for other states

** Actually only 3,015 individuals accounted for all the arrests - 183 individuals accounted for a combination of at least 1 arrest for a new offense and 1 arrest for technical violations. (See also Table No. 5)

***Based on number of arrests.

**** Figure does not include all those individuals revoked by the State Parole Board but not as yet returned to Prison Complex, rather remaining in county facilities.

TABLE #2

DISPOSITION OF RECORDED ARRESTS FOR NEW OFFENSES
(By Institutions*)

7-1-77 thru 6-30-78

		TSG	CIW	TSB	YCIA	YCIB	YRCC	SP	PH	O/S MALE	O/S FEMALE	TOTAL
<i>Adjudged guilty or delinquent by court action - 41%</i>	Committed to penal or correctional institution	0	13	38	153	86	76	47	1	20	0	434
	Suspended sentence or fined, as parole violator (returned)	0	2	4	14	24	16	8	0	1	0	69
	Suspended sentence or fined, and continued under supervision	3	32	32	252	198	161	96	0	21	1	796
	Served county jail sentence, and returned as parole violator	0	2	0	13	20	10	13	0	3	0	61
	Served county jail sentence, and continued under supervision	1	18	14	146	119	100	25	0	8	0	431
	Placed on probation, and returned as parole violator	0	0	0	1	2	0	2	0	0	0	5
	Placed on probation, and continued under supervision	1	5	14	64	38	44	11	0	3	0	180
	Returned for adjustment	0	0	2	0	1	0	0	0	0	0	3
Maximum expired while serving county jail sentence	0	0	0	1	2	0	1	0	0	0	4	
	TOTAL	5	72	104	644	490	407	203	1	56	1	1,983
<i>Dismissed by court action - 15%</i>	Continued under supervision	3	21	22	240	171	142	82	0	21	0	702
	Returned as parole violator	0	2	2	11	3	10	7	0	1	0	56
	TOTAL	3	23	24	251	174	152	89	0	22	0	738
<i>Miscel- laneous - 44%</i>	Disposition still pending	1	11	16	151	147	108	91	0	15	1	541
	Maximum expired while awaiting disposition	0	12	30	88	58	58	77	0	15	0	338
	Returned as parole violator awaiting disposition	1	22	39	416	321	317	103	0	8	0	1,227
	TOTAL	2	45	85	655	526	483	271	0	38	1	2,106
	GRAND TOTAL	10	140	213	1,550	1,190	1,042	563	1	116	2	4,827

*Legend -

- TSG - Training School for Girls
- CIW - Correctional Institution for Women
- TSB - Training School for Boys
- YCIA - Youth Correctional Institution, Annandale
- YCIB - Youth Correctional Institution, Bordentown
- YRCC - Youth Reception and Correction Center
- SP - State Prison
- PH - Sex offenders paroled from Psychiatric Hospital (Male)
- O/S Male - Male parolees supervised for other states
- O/S Female - Female parolees supervised for other states

TABLE # 3

DISPOSITION OF ARRESTS FOR TECHNICAL PAROLE VIOLATIONS

7-1-77 thru 6-30-78

(By Institutions*)

	TSG	CIW	TSB	YCIA	YCIB	YRCC	SP	PH	O/S MALE	O/S FEMALE	TOTAL
Returned as parole violator	0	6	2	48	41	42	35	0	2	0	174
Returned for adjustment	0	0	0	4	1	1	0	0	0	0	6
Released and continued under supervision	1	0	2	18	17	16	19	0	4	0	77
Turned over to police for new offense	0	0	0	1	1	2	3	0	1	0	8
Disposition pending	0	0	2	5	5	3	4	0	1	0	20
TOTAL	1	6	6	74	65	64	61	0	8	0	285

*Legend -

- TSG - Training School for Girls
- CIW - Correctional Institution for Women
- TSB - Training School for Boys
- YCIA - Youth Correctional Institution, Annandale
- YCIB - Youth Correctional Institution, Bordentown
- YRCC - Youth Reception and Correction Center
- SP - State Prison
- PH - Sex Offenders Paroled from Psychiatric Hospitals (Males)
- O/S MALE - Male parolees supervised for other states
- O/S FEMALE - Female parolees supervised for other states

TABLE #4

AGE AT TIME OF ARREST AND LENGTH ON PAROLE WHEN ARRESTED

7-1-77 thru 6-30-78

	AGE - (YEARS)					L E N G T H O F T I M E													
	15	16-17	18-20	21 AND OVER	TOTAL ARRESTS	1 Week	2 Wks.	3 Wks.	1-3 Mos.	4-6 Mos.	7-12 Mos.	13-18 Mos.	19-24 Mos.	3rd Year	4th Year	5th Year	OVER 5 Years	TOTAL ARRESTS	
Training School for Girls	0	3	7	1	11	0	0	0	2	3	0	1	5	0	0	0	0	11	
Correctional Institution for Women	1	0	19	126	146	1	3	0	2	31	134	16	12	19	15	3	0	146	
Training School for Boys	22	110	78	9	219	2	0	2	52	27	66	35	21	6	4	3	1	219	
Youth Correctional Inst., Annandale	0	99	683	842	1624	11	12	6	319	254	380	209	165	181	61	17	9	1624	
Youth Correctional Inst., Bordentown	0	1	45	1209	1255	12	7	3	169	197	292	178	119	159	77	27	15	1255	
Youth Reception / Correction Ctr.	1	48	286	771	1106	9	9	3	151	170	300	137	109	112	70	26	10	1106	
State Prison	0	0	4	620	624	8	9	4	133	122	118	88	41	43	23	15	20	624	
Sex Offenders (Psychiatric Hosps.)	0	0	0	1	1	0	0	0	0	0	0	0	0	0	0	0	1	1	
Male (out-of-state)	1	1	9	113	124	0	0	1	12	12	32	32	20	4	2	1	8	124	
Female (out-of-state)	0	0	0	2	2	0	0	0	0	0	0	0	0	1	0	0	1	2	
TOTALS	25	262	1131	3694	5112	43	40	19	850	816	1222	696	492	525	252	92	65	5112	
	*1%	5%	22%	72%		1%	1%	*1%	17%	16%	24%	14%	10%	10%	5%	2%	1%		
						1 Week	1%												
						2 Weeks		2%											
						3 Weeks			3%										
						1-3 Mos.				20%									
						4-6 Mos.					36%								
						7-12 Mos.						60%							
						13-18 Mos.							74%						
						19-24 Mos.								84%					
						2 Years									94%				
						(Cumulative)													

* Less than 1%

TABLE #5

5 YEAR COMPARISON (1973 - 1978)

FISCAL YEAR	CASELOAD		INDIVIDUALS ARRESTED			TOTAL ARRESTS		RECOMMITMENTS OR RETURNS RESULTING FROM ARRESTS	
	NUMBER OF INDIVIDUALS SUPERVISED	% OF INCREASE	NUMBER	% OF NUMBER SUPERVISED	% OF INCREASE	NUMBER	% OF INCREASE	NUMBER	% OF INCREASE
								NUMBER	% OF INCREASE
1977 - 1978	12,753	*	3,015	23.6	*	5,112	*	1,835	*
1976 - 1977	12,489	+ 0.5	4,422	35.4	+ 12.6	6,221	- 14.8	2,179	- 17.6
1975 - 1976	12,421	- 4.9	3,927	31.6	- 10.2	7,298	- 10.0	2,646	- 13.9
1974 - 1975	13,061	- 4.0	4,374	33.4	+ 0.9	8,112	+ 6.3	3,076	+ 12.8
1973 - 1974	13,609	+ 5.9	4,332	31.8	- 1.5	7,627	- 3.1	2,727	- 0.7
5 Year Increase	*	*	*	*	*	*	*	*	*

FISCAL YEAR	ARRESTS FOR INDICTABLE OFFENSES		ARRESTS FOR JUV. DELINQUENCY		ARRESTS UNDER DIS. PERSONS STATUTE		ARRESTS FOR MOTOR VEHICLE VIOLATIONS		ARRESTS UNDER LOCAL ORDINANCES		ARRESTS AS MATERIAL WITNESSES		ARRESTS FOR TECH. VIOLATIONS	
	NUMBER OF ARRESTS	% OF TOTAL ARRESTS	NUMBER OF ARRESTS	% OF TOTAL ARRESTS	NUMBER OF ARRESTS	% OF TOTAL ARRESTS	NUMBER OF ARRESTS	% OF TOTAL ARRESTS	NUMBER OF ARRESTS	% OF TOTAL ARRESTS	NUMBER OF ARRESTS	% OF TOTAL ARRESTS	NUMBER OF ARRESTS	% OF TOTAL ARRESTS
1977 - 1978	2,755	53.8	260	5.1	1,568	30.7	156	3.1	82	1.6	6	0.1	285	5.6
1976 - 1977	3,385	54.4	328	5.2	1,852	29.7	205	3.3	118	1.8	4	.06	329	5.2
1975 - 1976	3,901	53.4	367	5.0	2,200	30.1	261	3.6	145	1.9	9	0.1	415	5.6
1974 - 1975	4,350	53.6	600	7.4	2,352	28.9	292	3.6	122	1.5	11	0.1	384	4.7
1973 - 1974	3,962	51.9	666	8.7	2,128	27.9	343	4.5	149	2.0	14	0.2	365	4.8
5 Year Increase	*	*	*	*	*	*	*	*	*	*	*	*	*	*

* Although 5 year figures are presented, no attempt should be made to compare 1977 - 1978 figures with previous years - (See Introduction)

END