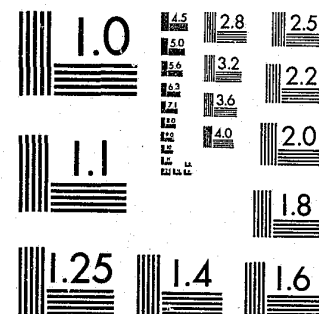


National Criminal Justice Reference Service

ncjrs

This microfiche was produced from documents received for inclusion in the NCJRS data base. Since NCJRS cannot exercise control over the physical condition of the documents submitted, the individual frame quality will vary. The resolution chart on this frame may be used to evaluate the document quality.



MICROCOPY RESOLUTION TEST CHART
NATIONAL BUREAU OF STANDARDS-1963-A

Microfilming procedures used to create this fiche comply with the standards set forth in 41CFR 101-11.504.

Points of view or opinions stated in this document are those of the author(s) and do not represent the official position or policies of the U. S. Department of Justice.

National Institute of Justice
United States Department of Justice
Washington, D. C. 20531

3-29-82

80687

Edward J. Baca
Director

Supreme Court of New Mexico
Administrative Office of the Courts

January 1, 1981

Supreme Court Building
Room 130
Santa Fe, New Mexico 87503
(505) 827-2771

THE HONORABLE CHIEF JUSTICE
AND JUSTICES OF THE SUPREME
COURT OF NEW MEXICO

DISTINGUISHED MEMBERS OF THE
NEW MEXICO STATE LEGISLATURE

Submitted for your review is the 1979-80 Annual Report of the Judicial Department, published pursuant to Section 34-9-3, et seq., N.M.S.A. 1978 Annotated. All information contained in this document is based on the fiscal rather than calendar year. Emphasis has been placed on statistics in response to requests for more detailed data.

During my first year as Director of the Administrative Office of the Courts, I have established goals and objectives and set project priorities. The number of services we are called upon to provide the people of New Mexico continues to increase. Every effort is being made to centralize administration of the state courts, thus relieving our busy districts of many time-consuming aspects of their responsibilities. Rising caseloads at all levels have placed more demands on the courts creating a greater need for automation and better systems. These areas of concern are continually addressed as we strive to improve the quality of support rendered.

The cooperation of both Executive and Legislative branches of government during the past year is a positive step forward in achieving our mutual goals.

Respectfully submitted,

Edward J. Baca
EDWARD J. BACA, DIRECTOR
Administrative Office of the Courts

AUG 10 1981

U.S. Department of Justice
National Institute of Justice

80687

This document has been reproduced exactly as received from the person or organization originating it. Points of view or opinions stated in this document are those of the authors and do not necessarily represent the official position or policies of the National Institute of Justice.

Permission to reproduce this copyrighted material has been granted by

Public Domain

NM Administrative Office of the

Courts
to the National Criminal Justice Reference Service (NCJRS).

Further reproduction outside of the NCJRS system requires permission of the copyright owner.

TABLE OF CONTENTS

Page	
1	<i>Administrative Office of the Courts</i>
5	<i>The Supreme Court</i>
8	<i>Court of Appeals</i>
12	<i>District Courts</i>
22	<i>Juvenile Probation Services</i>
25	<i>Magistrate Courts</i>
31	<i>Subsidiary Judicial Agencies</i>

ADMINISTRATIVE OFFICE OF THE COURTS

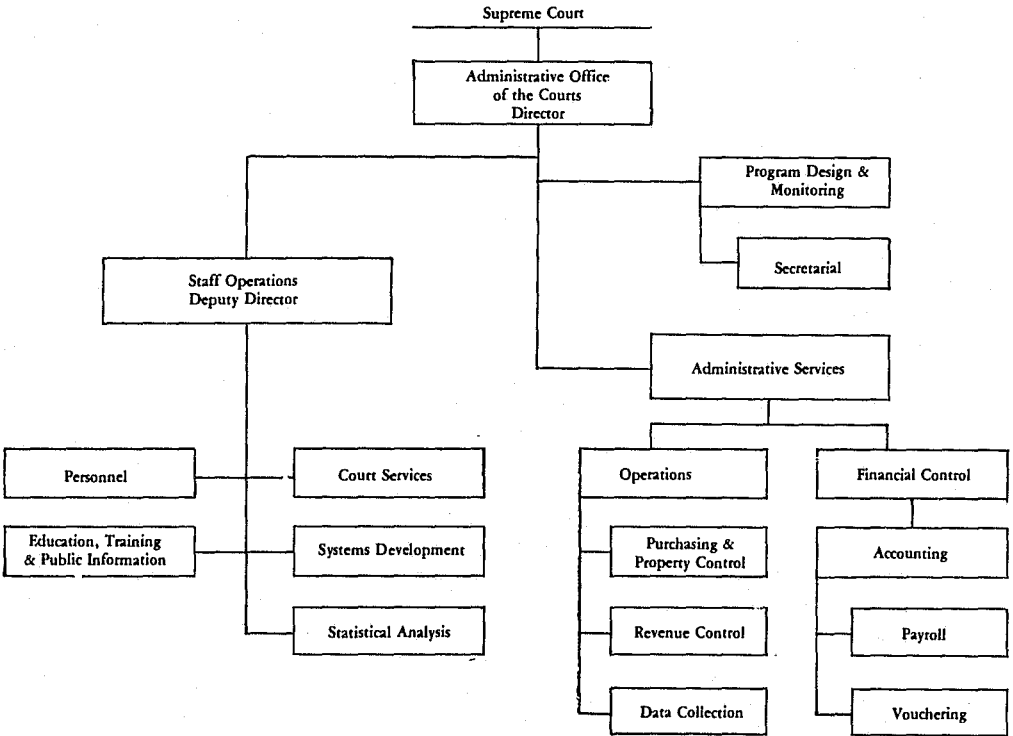
This report for fiscal year 1979-80 is submitted in accordance with Section 34-9-3, NMSA 1978 Annotated, which requires the Director of the Administrative Office of the Courts, under the supervision and direction of the Supreme Court to:

- supervise all matters relating to administration of the courts;
- examine fiscal matters and the state of the dockets of the courts...
- submit to the Supreme Court and to the Legislature by January 30 of each year a report of the activities of the administrative office and of the state of business of the courts, including the statistical data submitted to the Supreme Court...
- deal with the problems of finance of those courts supported by legislative appropriation and be concerned with adequate but economical financing of each of these courts and the equitable distribution of funds among them. For this purpose the Director shall receive, adjust and approve proposed budgets submitted by these courts...
- perform other duties in aid of the administration of justice and the administration and dispatch of the business of the courts as directed by the Supreme Court. The courts shall comply with all requests of the director for information.

The Administrative Office of the Courts each year is budgeted funds to maintain the total operation of the

magistrate courts, penalty assessment revenue collection system, district court jury and witness vouchering system, judge pro tempore program, and management staff. Other responsibilities include judicial personnel administration, court services, program design and monitoring, system development, continued judicial education and training, administrative services management, and operations supervision of the Supreme Court Building Commission.

Edward J. Baca was appointed by the Supreme Court on May 13, 1980 to the position of Director of the Administrative Office of the Courts, having served as Deputy Director since 1974. Gailen H. Hooper was appointed Deputy Director on July 7, 1980. Reorganization of the administrative office has been accomplished and is reflected in the organization chart which follows. The staff of thirty-three full-time employees is organized into two divisions: Staff Operations and Administrative Services. Nineteen of the thirty-three persons are employed within the Administrative Services Division handling budget expenditures for the administrative office and the Supreme Court Building Commission, collecting data, and receiving revenues generated by traffic citations (penalty assessments) and the magistrate courts. Staff Operations performs studies of judicial organizational structures, systems and methods for the purpose of recommending changes deemed advisable for improved functioning of the appellate, district and magistrate courts. Court services to district and magistrate courts, court reporters and juvenile probation officers are provided by the Staff Operations Division, as well as judicial education and training and program design and monitoring.



Penalty Assessment Program

The State's penalty assessment system is now ten years old, having as its main objective the disposition by mail of minor traffic citations issued by the State Police and eleven other enforcement and regulatory agencies.

At issue over the past two to three years has been the question of how best to ensure payment of assessments by non-resident motorists. The skip rate (as shown by the accompanying table) is high, lost revenues are sizeable, and respect for the law is continually flouted. An amendment to the Motor Vehicle Code by the 1977 Legislature mandated an immediate appearance before a magistrate by any nonresident motorist stopped for a traffic violation. This measure failed to achieve its intended purpose, since more warnings than citations tended to be issued in order to conserve patrol time. Trucking, automobile, and motel associations all complained about the amendment, and it was repealed by the 1978 Legislature.

In the future, the Administrative Office of the Courts would like to see legislation drafted to create a new penalty assessment system, designed to reduce skips without inconveniencing the police or the motorists. The Administrative Office of the Courts will be participating in continuing this effort with all affected agencies.

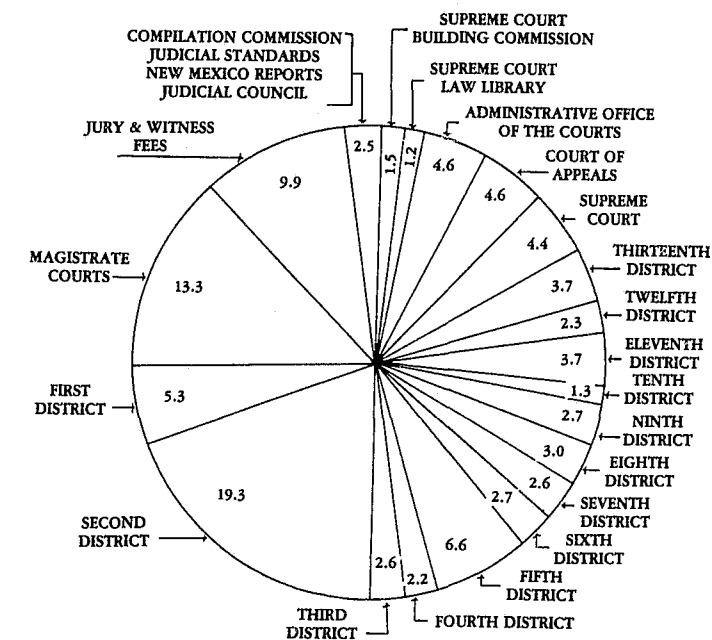
PENALTY ASSESSMENTS PROCESSED FROM JULY, 1979 THROUGH JUNE, 1980

Month	Number of Documents	Amount	Resident Skip	Nonresident Skip
JULY	12,983	\$218,444.51	1,434	1,920
AUGUST	13,344	222,695.00	1,297	2,224
SEPTEMBER	10,929	182,347.14	1,439	1,802
OCTOBER	9,022	150,541.25	1,237	1,255
NOVEMBER	7,814	140,093.08	1,707	1,560
DECEMBER	8,276	139,008.20	1,413	1,514
JANUARY	10,577	203,581.50	1,404	1,687
FEBRUARY	7,929	132,008.94	859	1,186
MARCH	8,635	143,351.77	1,058	1,417
APRIL	8,578	141,863.61	1,134	1,288
MAY	9,888	163,333.20	1,660	2,339
JUNE	13,694	227,071.25	1,137	1,595
	121,669	\$2,064,339.45	15,779	19,787

CITATIONS RECEIVED

Year	Residents	Non-Residents	Total	Revenue Collected
1970	34,028	20,245	54,273	\$ 667,629
1971	38,994	24,580	63,574	841,989
1972	43,929	26,728	70,657	1,009,963
1973	44,977	23,173	68,150	948,295
1974	38,798	34,289	73,087	1,148,812
1975	48,883	37,839	86,722	1,317,818
1976	63,003	48,875	111,878	1,792,922
1977	56,617	25,436	82,053	1,370,085
1978	64,324	39,015	103,339	1,763,009
1979	73,679	49,120	122,799	2,104,222
1979-1980	77,263	44,406	121,669	\$2,064,339

GENERAL FUND EXPENDITURES FOR THE YEAR ENDED JUNE 30, 1980



GENERAL FUND EXPENDITURES BY REPORTING ENTITY FOR THE YEAR ENDED JUNE 30, 1980

Code	Activity	Amount Expended And Encumbered	% of Total	Code	Activity	Amount Expended And Encumbered	% of Total
205	Supreme Court Law Library	\$ 184,500	1.2	232	Second Judicial District	2,926,800	19.3
208	Compilation Commission	222,300	1.5	233	Third Judicial District	400,100	2.6
210	Judicial Standards Commission	19,200	.1	234	Fourth Judicial District	331,700	2.2
213	New Mexico Reports	89,500	.6	235	Fifth Judicial District	1,000,800	6.6
212	Judicial Council	44,100	.3	236	Sixth Judicial District	411,600	2.7
215	Court of Appeals	702,000	4.6	237	Seventh Judicial District	390,900	2.6
216	Supreme Court	661,100	4.4	238	Eighth Judicial District	451,000	3.0
218.1	Administrative Office of the Courts	702,800	4.6	239	Ninth Judicial District	405,100	2.7
218.3	Magistrate Courts	2,016,700	13.3	240	Tenth Judicial District	202,800	1.3
219	Supreme Court Building Commission	230,100	1.5	241	Eleventh Judicial District	567,800	3.7
231	First Judicial District	796,200	5.3	242	Twelfth Judicial District	345,300	2.3
				243	Thirteenth Judicial District	561,900	3.7
					Jury And Witness Fees	1,480,100	9.9
						15,144,400	100%

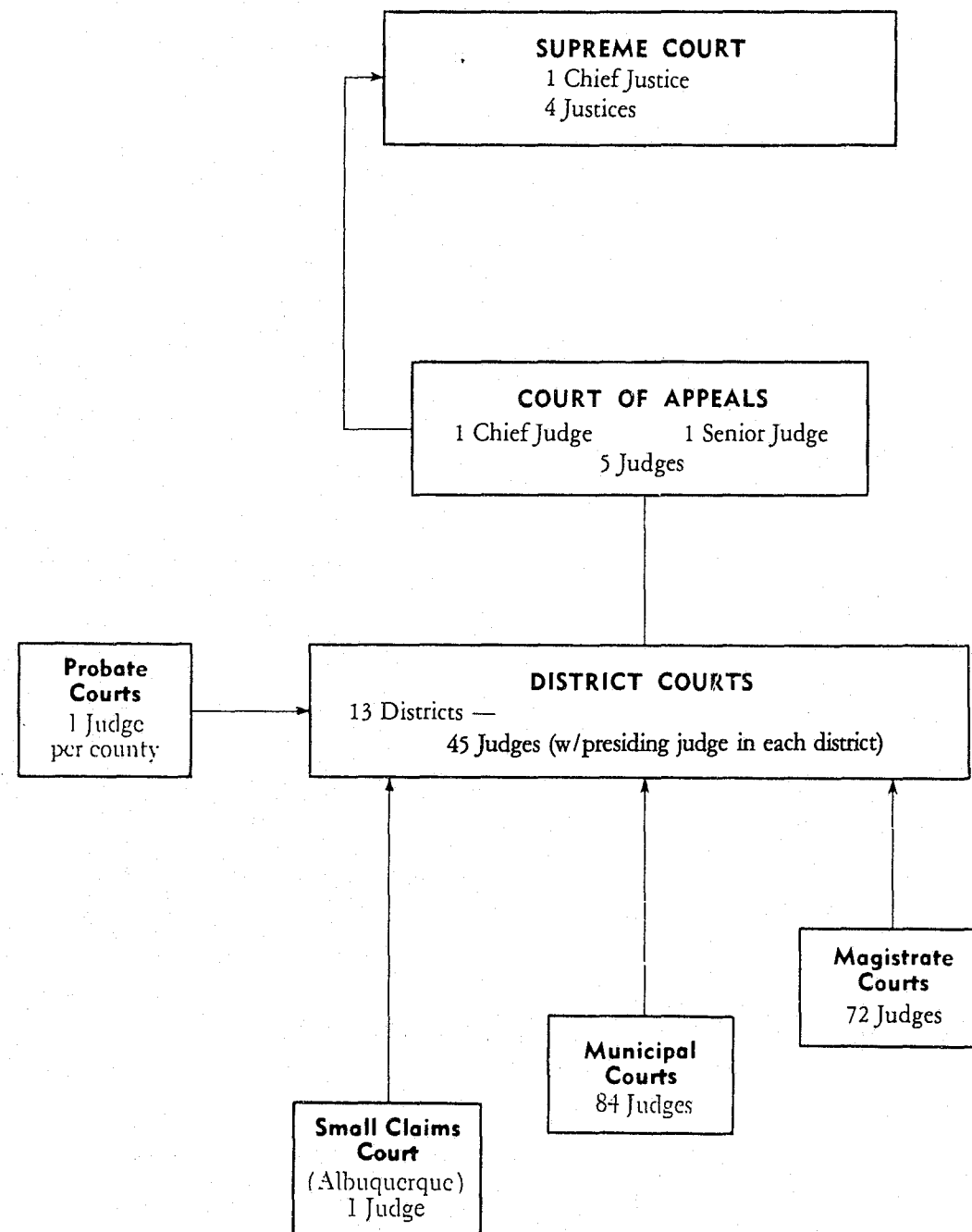
GENERAL FUND EXPENDITURES DISTRICT COURT REGULAR AND JUVENILE PROBATION 68TH FISCAL YEAR, 1979-80

	Court Regular	% Agency Total	Juvenile Probation	% Of Agency Total	Agency Total
Judicial District 1	579,200	72.7	217,000	27.3	796,200
Judicial District 2	2,254,500	76.2	702,300	23.8	2,956,800
Judicial District 3	258,700	63.8	146,900	36.2	405,600
Judicial District 4	251,300	75.8	80,100	24.2	331,400
Judicial District 5	802,600	80.2	198,000	19.8	1,000,600
Judicial District 6	307,600	74.8	103,800	25.2	411,400
Judicial District 7	313,100	80.1	77,800	19.9	390,900
Judicial District 8	275,600	64.1	154,100	35.9	429,700
Judicial District 9	273,900	67.5	132,000	32.5	405,900
Judicial District 10	157,400	77.7	45,300	22.3	202,700
Judicial District 11	426,700	75.2	140,600	24.8	567,400
Judicial District 12	258,000	74.5	88,200	25.5	346,300
Judicial District 13	439,900	78.3	121,900	21.7	561,800
	6,598,500	75.5%	2,208,000	25.5%	8,806,700

* All amounts in thousands of dollars.

New Mexico Judicial System 1979-80

Appeals route



THE SUPREME COURT

During the 68th Fiscal Year the Supreme Court was composed of:

Dan Sosa, Jr., Chief Justice
Mack Easley, Justice
H. Vern Payne, Justice
William R. Federici, Justice
Edwin L. Felter, Justice

John B. McManus, Jr. died on July 6, 1979, while still in office. Mr. Justice Felter was appointed by the Governor to fill the vacancy created by Justice McManus' death.

John B. McManus, Jr. and William R. Federici were elected to an eight-year term, beginning January 1, 1979. Dan Sosa, Jr. was successful in his race for an eight-year term, which began January 1, 1977. Mack Easley and H. Vern Payne were successful in their election bids for unexpired terms of six years and four years respectively. Each term began January 1, 1977. Mr. Justice Felter is running at the next general election for the unexpired term of Mr. Justice McManus.

The Chief Justice presides at all sessions of court and is the Administrative Officer of the Court during his tenure as Chief Justice. The Chief Justice is selected by the Court to serve two years. Mr. Chief Justice Sosa was elected by the Court to serve as Chief Justice for the 1979 and 1980 calendar years.

New cases filed on the regular docket were on the following monthly basis, with comparable figures for the 68th, 67th, 66th, 65th and 64th fiscal years:

	68th	67th	66th	65th	64th
July	45	41	48	43	40
August	53	43	53	32	31
September	38	43	43	29	40
October	44	49	51	30	29
November	45	47	34	38	28
December	40	33	51	32	47
January	51	36	45	41	42
February	47	37	46	44	37
March	66	39	51	48	32
April	50	60	56	41	55
May	43	47	65	39	56
June	55	47	43	49	44
	577	522	586	466	481

In addition to the cases above, there were 422 miscellaneous motions filed for a total of 999 filings.

New matters filed on the regular docket are in the following categories, with comparable figures when available:

	68th	1979	1978	1977	1976
Civil	227	206	245	251	206
Criminal	32	28	28	22	7
Certiorari	208	182	174	167	184
Mandamus	21	27	27	18	21
Prohibition	60	59	56	51	27
Habeas Corpus	14	10	12	17	6
Superintending Control	5	7	7	6	3
Disciplinary	1	2	3	4	11
Quo Warranto			1		
Rule 32 Election Challenge			5		
Criminal Contempt		1	1		
Judicial Standards	1	2	1		
Suspension of Attorneys	3	2	2		
Removal from Corp.		1		1	
Commission					
Other	5	4	5	5	5
	577	531	562	542	470

There were 56 cases entered on the habeas corpus docket. There were petitions filed and hearings held on 317 Rule 37 Motions, 26 Rule 46 motions and 23 Rule 60 motions. These motions are entered on a separate docket and deal with the right to a speedy trial, a right to hearing, etc. One Justice hears all of the above petitions each month and the assignment is rotated between the Justices.

Original proceedings, motions, and petitions for prerogative writs are heard by a panel of three Justices each Wednesday, unless otherwise directed by the Court. The panels for the hearings are assigned by the Chief Justice each month on a rotating basis. The Court disposes of these matters either by order or by written opinion.

Petitions for writ of certiorari to the Court of Appeals are considered by the entire Court, and are either granted and assigned for disposition by opinion, or denied by order.

The remainder of the cases filed in the Supreme Court are placed in the regular docket to be submitted to the Court then at issue either on briefs or oral argument.

The Supreme Court scheduled 28 days of oral argument and heard a total of 145 cases during the 68th fiscal year. Thirty-three cases were submitted to the Court on briefs only.

The Supreme Court handed down 213 opinions and/or decisions during the twelve-month period, disposing of 213 cases. There were opinions/decisions handed down on 34 cases where writs of certiorari had been issued, reviewing decisions of the Court of Appeals.

Chief Justice Sosa	37
Justice Easley	53
Justice Payne	42
Justice Federici	42
Justice Felter	31
District Judges sitting by designation:	
Brown	1
Angel	1
Baca	1
Byrd	1
Court of Appeals Judge sitting by designation:	
Walters	1
Per Curiam	3

The results of the above 213 opinions/decisions were as follows:

Affirmed	117
Reversed	66
Affirmed in Part: Reversed in Part	18
Dismissed	2
Quashed Writ	1
Remanded	5
Reversed Trial Court	1
Set Aside Contempt Citation	1
Awarded Costs	1
Awarded Attorneys Fees	1
	213

The average elapsed time for the cases closed by written opinion and/or decision was as follows:

	68th	1979	1978	1977
From Notice of Appeal to Transcript*	92.0 days	93.6 days	85.8 days	75.8 days
From Transcript to Issue	82.4	82.5	73.5	63.4
From Issue to Submission	60.1	59.0	52.6	44.0
From Submission to Opinion/Decision	85.9	74.8	41.5	56.7
From Issue to Opinion/Decision	146.4	135.8	94.5	77.7
From Transcript to Mandate	269.5		182.0	155.1

*As Counsel has only thirty days to file a skeleton transcript after the filing of notice of appeal, no table was prepared on Notice of Appeal to Docketing.

RECAP OF CASES PENDING ON JULY 1, 1979:

At Issue - not set for oral argument	16
Not At Issue	50
Previously Submitted	52
	118

TOTAL CASES PENDING JULY 1, 1979 118

NEW CASES FILED - REGULAR DOCKET 577

TOTAL CASES ON DOCKET AT END OF FISCAL YEAR 695

LESS TOTAL NUMBER OF CASES DISPOSED OF - 530

TOTAL NUMBER OF PENDING CASES ON DOCKET 165

RECAP OF CASES PENDING ON JUNE 30, 1980:

At Issue - not set for oral argument	17
Not at Issue	71
Previously Submitted	77
	165

The Compilation Commission has continued to service the New Mexico Statutes Annotated's public subscribers. Approximately 990 full set holders are not participating in this service. There are, in addition, approximately this same number of partial set holders. There have been three distributions of statute materials made to the set holders and two billings have been authorized by this office. The next distribution and billing was effectuated in July.

The Compilation Commission has recently undertaken the organization and publication of the New Mexico Attorney General Opinions. Subscriptions to this service number 153. The individual Attorney General Opinions, as well as a 30-year index, compliance guides and informational pamphlets, are being offered in this quarterly subscription service. Three quarterly distributions have been completed by this office.

As a service to the public, the Compilation Commission and this office are maintaining an inventory of statute and Attorney General Opinion materials for purchase. Currently these supplies are running at approximately 200 of each pamphlet and supplement, with a supply of 500 of the Attorney General's various guides ready for distribution.

Volume 92 of the New Mexico Reports was purchased in 1979. Inventory of the New Mexico Reports is not complete. This was accomplished during the 67th fiscal year. Volume 93 of the New Mexico Reports was received in August, 1980.

Sale of the New Mexico Reports is made to the general public and all state agencies.

IN THE COURT OF APPEALS OF
THE STATE OF NEW MEXICO
REPORT OF THE CLERK
JULY 1, 1979 through JUNE 30, 1980

During the above period, the Court of Appeals was composed of:

Joe W. Wood, Chief Judge
William R. Hendley, Senior Judge
Lewis R. Sutin, Judge
B.C. Hernandez, Judge
Ramon Lopez, Judge
Mary C. Walters, Judge
Leila Andrews, Judge

I. NEW FILINGS

Volume	1979	1980
July	54	
August	46	
September	30	
October	66	
November	40	
December	41	
January		42
February		53
March		33
April		51
May		57
June		57
TOTALS	277	293 570

Category

Civil:	
Administrative appeals	38
Interlocutory appeals	26
Docket and affirm	6
All other	205
	275
Criminal:	
Interlocutory appeals	19
Docket and affirm	0
All other	276
	295 570

Free process in both criminal and civil appeals	289
---	-----

Action on Interlocutory appeals

Granted	17
Denied	27
Transfer to Supreme Court	1

II. CASE DISPOSITIONS

Volume	OPINION	ORDER	TRANSFER	CERTIFICATION TO SUPREME COURT
July	26	5	1	0
August	30	13	2	0
September	38	18	0	0
October	31	8	2	0
November	28	5	1	0
December	30	0	1	0
January	59	24	0	0
February	40	11	2	1
March	42	9	3	1
April	33	5	0	0
May	47	3	1	0
June	39	18	1	0
TOTALS	443	119	14	2 578

Formal Opinions: 205
Memorandum Opinions: 238

Category of Opinion

Civil/	
Affirmed	106
Reversed	65
Dismissed	2
Affirm/Reverse	9 182
Criminal/	
Affirmed	178
Reversed	69
Dismissed	7
Affirm/Reverse	7 261 578

Calendar Assignments of Criminal Appeals Reversed

Reversal in favor of state:	
Limited	1
Legal	2
Summary	3
Reversal in favor of defendant:	
Limited	40
Legal	3
Summary	16
No calendaring	4
Defendants ordered discharged	10
Further trial proceedings ordered	53

Calendar Assignments of Criminal Appeals Affirmed/Reversed

Limited	5
Legal	0
Summary	0
Defendants ordered discharged	0
Further trial proceedings ordered	7

III. CERTIORARI (filed in New Mexico Supreme Court)

Notices filed:	
Notices pending prior to 7-1-79:	5
Notices filed 7-1-79 thru 6-30-80:	206 211
Denied:	126
Issued	74 200
Pending	11

Writs issued:	
Writs pending prior to 7-1-79:	18
Writs issued 7-1-79 thru 6-30-80:	77 95
Final Decisions of Supreme Court:	

Reversed	28
Affirmed	8
Affirm/Reverse	4
Quashed	24 64
Pending	31

No Writs of Certiorari from Court of Appeals decisions were granted by the U.S. Supreme Court.

IV. MOTIONS

Motions filed:		799
Extensions of time		498
Briefs	346	
Transcripts	39	
Docketing statements	31	
Other	82	
Dismissals and/or affirmances		55
Docket and affirm		2
Rehearings		54
Other		190
TOTALS		799

DISPOSITION OF REHEARINGS

Grant	2
Deny	54
Pending	0

IV. MISCELLANEOUS

There were 36 days of oral argument involving 115 cases.
There were 24 days of motion hearings involving 38 cases.
There were 3 days of order to show cause hearings involving 3 cases.

Attached to this report and marked "Exhibit A" is a list of cases filed by county during this period.

Also attached to this report and marked "Exhibit B" is a list of criminal cases filed by offense committed.

	Total	Free Process	Civil	Criminal	Docketing Statements	Interlocutory Cr. CIV	D&A
Bernalillo	223	147	76	147	142	8	11
Catron	3	1	2	1	1		
Chaves	24	22	5	19	19	4	
Colfax	5	2	1	4	4		
Curry	12	8	2	10	8	1	1
De Baca							
Dona Ana	13	7	8	5	5		1
Eddy	32	22	12	20	19	4	1
Grant	8	2	6	2	2		1
Guadalupe							
Harding							
Hidalgo	2		2				
Lea	25	15	8	17	15		
Lincoln	2		2				1
Los Alamos	4	1	3	1	1		
Luna	6	2	5	1	1		
McKinley	4	1	3	1	1		1
Mora							
Otero	16	5	8	8	8		2
Quay							
Rio Arriba	7	4	3	4	4	1	2
Roosevelt	5	3	1	4	4		
Sandoval	11	2	7	4	3		
San Juan	19	9	11	8	8	1	1
San Miguel	8	5	7	1	1		1
Santa Fe	31	11	19	12	11		2
Sierra							
Socorro	1		1				1
Taos	4	1	3	1	1		
Torrance	2	2		2	2		1
Union							
Valencia	14	6	10	4	4		
TOTAL	481	278	205	276	264	19	26

Administrative 38
Appeals 11

"Exhibit A"

Accessory to murder	1
Aggravated battery	11
Aggravated burglary	3
Attempted murder	1
Armed robbery	21
Arson	1
Assault	1
Attempted forgery	1
Attempted murder	1
Auto burglary	1
Battery upon a peace officer	2
Bribery	1
Burglary	9
Children's Court	15
Commercial burglary	6

Child abuse	1
Commercial larceny	1
Conspiracy	3
Conspiracy to distribute	1
Contempt of court	3
Contribution to delinquency	1
Criminal sexual penetration	14
Criminal trespass	1
Custodial interference	1
Dealing with credit cards of another	1
Delinquency	1
Distribution of controlled substance	3
Distribution of drugs	1
Distribution of marijuana	1
Driving while intoxicated	1
Driving with a suspended license	1
Drugs	15
Embezzlement	1
Enhancement of sentence	2
Escape from penitentiary	1
Fleeing	1
Failure to appear	1
Forgery	5
Fraud	5
Habitual	14
Harboring a felon	2
Homicide	1
Intent to distribute	1
Issuing worthless checks	1
Kidnapping	5
Larceny	1
Manslaughter	1
Misrepresentation & fraud	1
Murder, 2 nd degree	16
Parole violation	2
Possession of marijuana	2
Possession of a controlled substance	3
Possession of stolen property	1
Possession of a stolen vehicle	1
Receiving a stolen motor vehicle	1
Receiving stolen property	6
Residential burglary	5
Revocation of probation	6
Revocation of deferred sentence	1
Revoked license	2
Robbery	3
Sexual contact of a minor	1
Shoplifting	3
Tampering with evidence	1
Trafficking controlled substance	2
Trafficking heroin	8
Transferring stolen vehicle	1
Unauthorized entry of motor vehicle	1
Unlawful taking of a motor vehicle	4
Vehicular homicide	5
Violation of probation	1
Voluntary manslaughter	4
Unlawful carrying of a firearm	1
Interlocutory appeals	19
Other	27

NEW MEXICO COURT OF APPEALS STATISTICS OF AVERAGE TIME ON APPEAL, FROM NOTICE OF APPEAL THROUGH FINAL DECISION (OPINION)

January 1980 through June 30, 1980
(Future statistics to cover fiscal years. July 1 through June 30)

Total cases decided:	339
Less dismissed, denied, docketed & affirmed:	70
Less transferred to Supreme Court:	9
Less atypical cases:	11
	249

CHILDREN'S AND CRIMINAL CASES

BERNALILLO COUNTY

CALENDAR	NO. CASES	NA—DS	DS—CA	CA—MEMO	CA—BC	MEMO—D	BC—AB	AB—D	NA—D
Summary Affirmance.....	16	15.7	14.9	11.8	NA	13.4	NA	NA	51.8
Summary Reversal.....	10	8.1	13.7	8.8	NA	10.0	NA	NA	40.6
Summary Dismiss.....	2	9.0	9.0	8.0	NA	8.0	NA	NA	34.0
Limited Pure Trans.....	6	7.8	11.5	NA	74.5	NA	21.3	91.7	206.8
Limited-Mix Trans./Tapes.....	30	13.6	12.3	NA	84.4	NA	22.1	101.6	234.0
Limited Pure Tapes.....	11	20.8	8.3	NA	66.3	NA	20.6	105.5	221.7
Legal.....	0								

OTHER COUNTIES

Summary Affirmance.....	20	10.2	12.9	8.3		9.0		NA	40.4
Summary Reversal.....	4	12.0	10.0	9.7		15.0		NA	46.7
Summary Dismiss.....	2	11.0	10.5	9.0		10.0		NA	40.5
Limited Pure Trans.....	42	15.2	7.9		90.4		26.2	96.9	236.6
Limited-Mix Trans./Tapes.....	0								
Limited Pure Tapes.....	0								
Legal.....	0								

CIVIL CASES

BERNALILLO COUNTY

TYPE OF CASE	NO. CASES	NA—TR	TR—BC	BC—AB	AB—D	NA—D
Tort.....	24	93.5	34.6	37.7	162.3	328.1
Workmen's Comp.....	10	94.2	35.9	30.1	101.8	262.0
Other.....	8	72.5	20.4	38.6	131.5	263.0

OTHER COUNTIES

Tort.....	29	102.5	36.2	36.8	154.1	329.6
Workmen's Comp.....	13	82.5	34.6	31.2	152.7	301.0
Other.....	6	80.2	42.8	29.5	137.5	290.0

Administrative Appeals.....	9	43.2	34.2	40.3	199.3	317.0
-----------------------------	---	------	------	------	-------	-------

Interlocutory Appeals.....	4	34.3	19.0	15.5	78	146.8
----------------------------	---	------	------	------	----	-------

NA—Notice of Appeal filed in the district court

BC—Brief in Chief filed

DS—Docketing Statement filed in Court of Appeals

CA—Calendar Assignment

TR—Transcript (or Tapes) filed in the Court of Appeals

MEMO—Memo in Opposition to proposed Summary

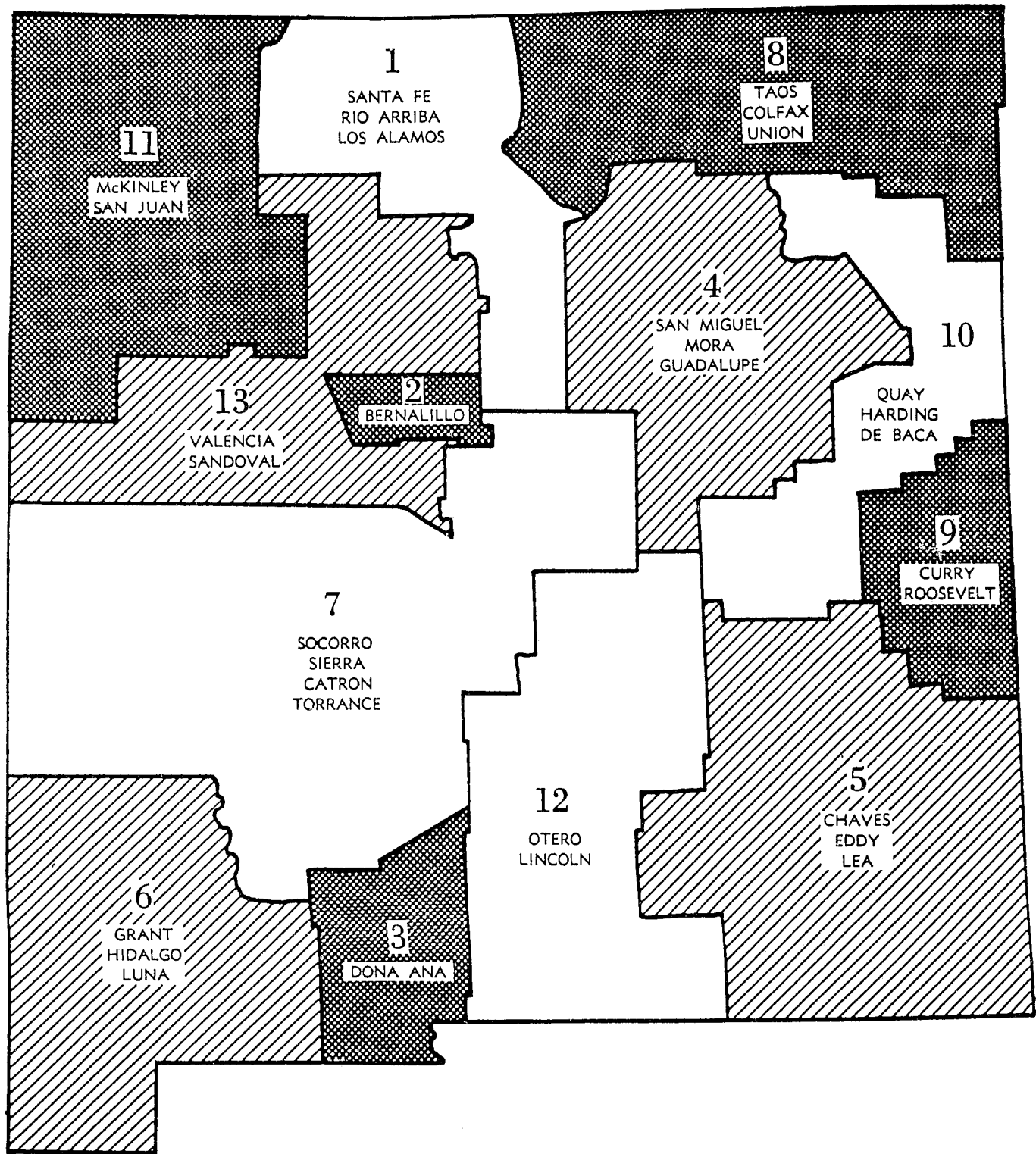
Calendar

AB—Answer Brief filed

D—Decision filed

(1) These are cases which due to severe problems or delays do not adequately fit into normal format. (i.e. reinstated cases, cases in which the clerk's record was delayed for an excessive amount of time or an unusual number of extensions.)

DISTRICT COURTS



DISTRICT COURTS

In fiscal year 1979-80 there were 44 district judges through April of 1980. The 1980 Legislature created 2 additional judgeships, 1 to commence May, 1980 and 1 to commence January, 1981. The 1979 Legislature created 1 judgeship to commence January, 1981. The First Judicial District received a new judgeship, Division V, in May, 1980. Honorable Michael Francke was appointed to fill this position by Governor Bruce King. The additional judgeships in the Second Judicial District, Division XV, and the Fifth Judicial District, Division VI, will be filled via the elective process to take office January 1, 1981. The Honorable Harl D. Byrd was appointed September 12, 1979 by Governor Bruce King to fill the vacancy in the first Judicial District, Division II, created by Judge Edwin L. Felter's appointment to the Supreme Court August 16, 1979. At fiscal year end, June 30, 1980, there were 45 district judges.

It is anticipated that during the 1981 legislative session, 2 districts will request additional judgeships: the First and Third Judicial Districts.

DISTRICT	COUNTIES	NO. OF JUDGES 6/30/80
1	Santa Fe, Rio Arriba, Los Alamos . .	4 + 1 New
2	Bernalillo	14
3	Dona Ana	2
4	San Miguel, Mora, Guadalupe . . .	2
5	Eddy, Chaves, Lea	5
6	Grant, Hidalgo, Luna	2
7	Socorro, Sierra, Catron, Torrance .	2
8	Taos, Colfax, Union	2
9	Curry, Roosevelt	2
10	Quay, De Baca, Harding	1
11	McKinley, San Juan	3
12	Otero, Lincoln	2
13	Valencia, Sandoval	3
TOTALS	32 Counties	44 + 1 = 45

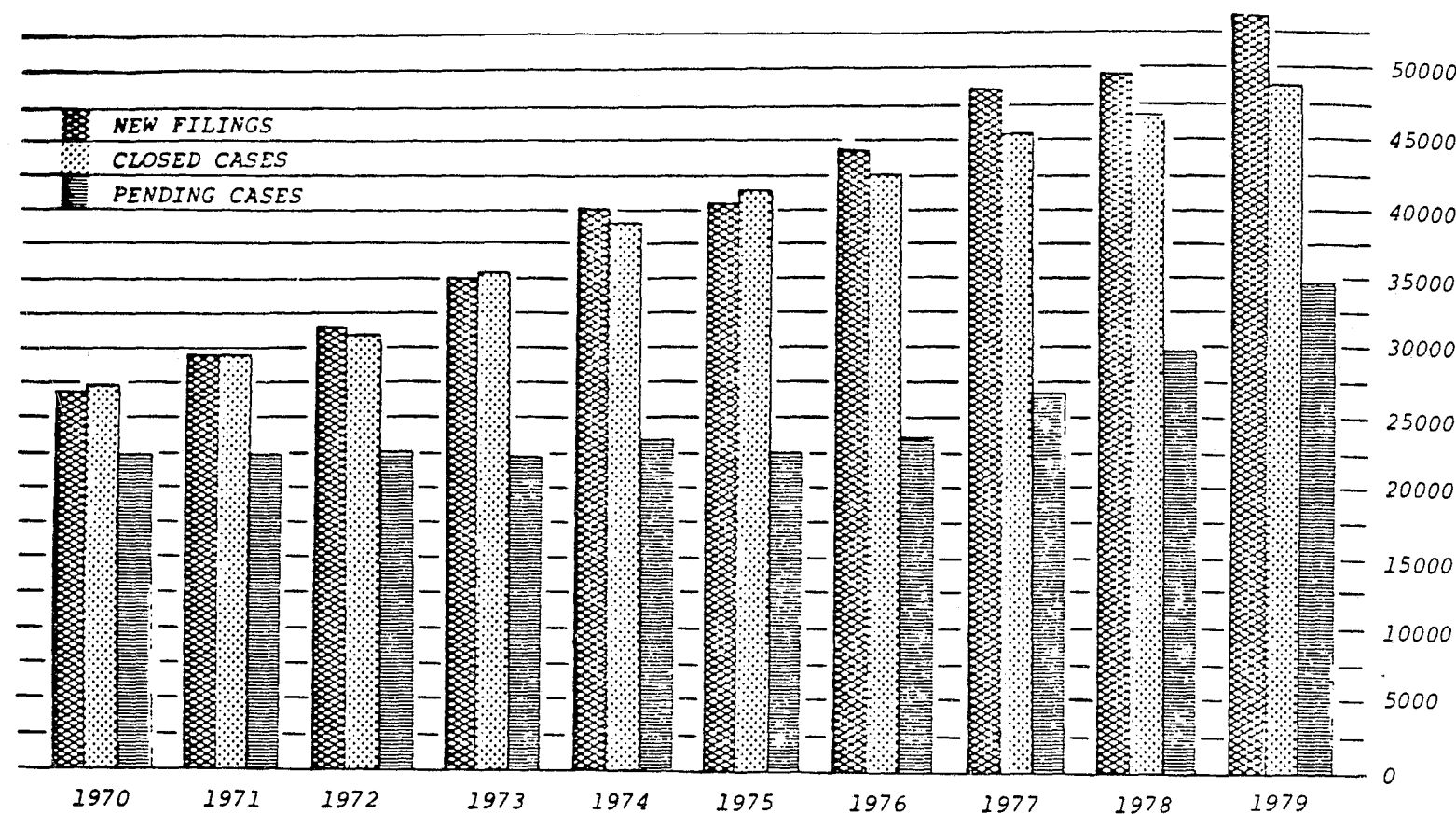
DISTRICT COURT JUDGES
1979-80

DISTRICT	JUDGE	DISTRICT	JUDGE
1	Bruce E. Kaufman, Presiding Judge Harl D. Byrd* Thomas A. Donnelly Michael Francke** Lorenzo Garcia	5	N. Randolph Reese, Presiding Judge Harvey W. Fort C. Fincher Neal Paul Snead John B. Walker
2	Rozier E. Sanchez, Presiding Judge Joseph F. Baca Phil Baiamonte W. John Brennan John E. Brown Gerald R. Cole Gerald D. Fowlie Gene Franchini Jack Love Patricia A. Madrid James A. Maloney William F. Riordan Harry E. Stowers, Jr. Richard B. Traub Tom Ruiz District Court Administrator	6	Norman Hodges, Presiding Judge Ray Hughes
3	Garnett R. Burks, Jr., Presiding Judge Joe H. Galvan, Administrative Judge	7	Edmund H. Kase, III, Presiding Judge Paul "Pablo" Marshall
4	Joe Angel, Presiding Judge Donaldo A. Martinez	8	John B. Wright, Presiding Judge Joe Caldwell
		9	Reuben E. Nieves, Presiding Judge Fred T. Hensley
		10	Stanley F. Frost
		11	James W. Musgrove, Presiding Judge James L. Brown Louis E. De Pauli
		12	George L. Zimmerman, Presiding Judge Robert M. Doughty, II
		13	Filo M. Sedillo, Presiding Judge Tibo Chavez George Perez

*The Honorable Harl D.Byrd appointed September 12, 1979 by Governor Bruce King to fill vacancy created by the appointment of Judge Edwin L. Felter to the Supreme Court August 16, 1979.

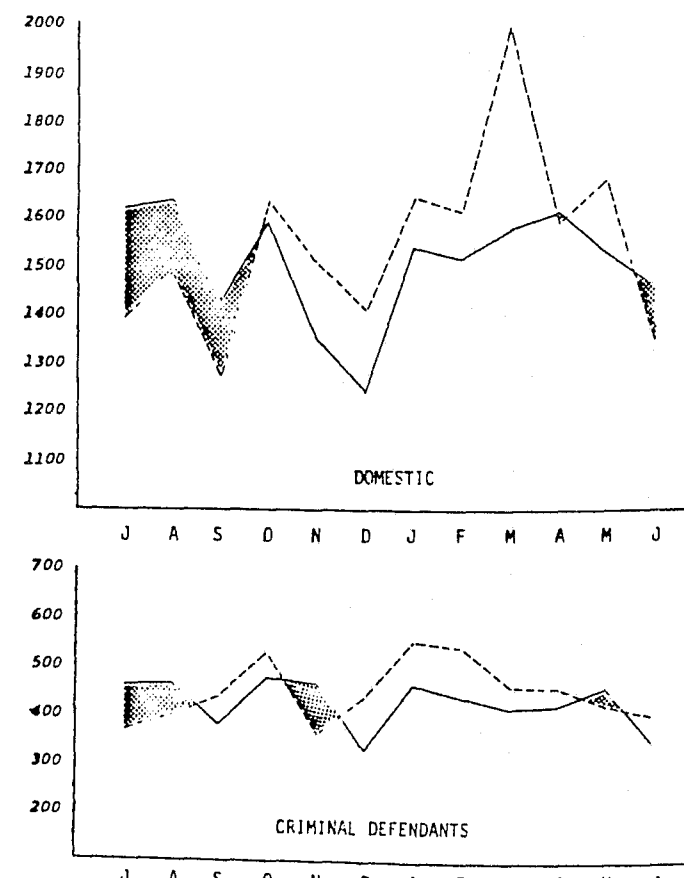
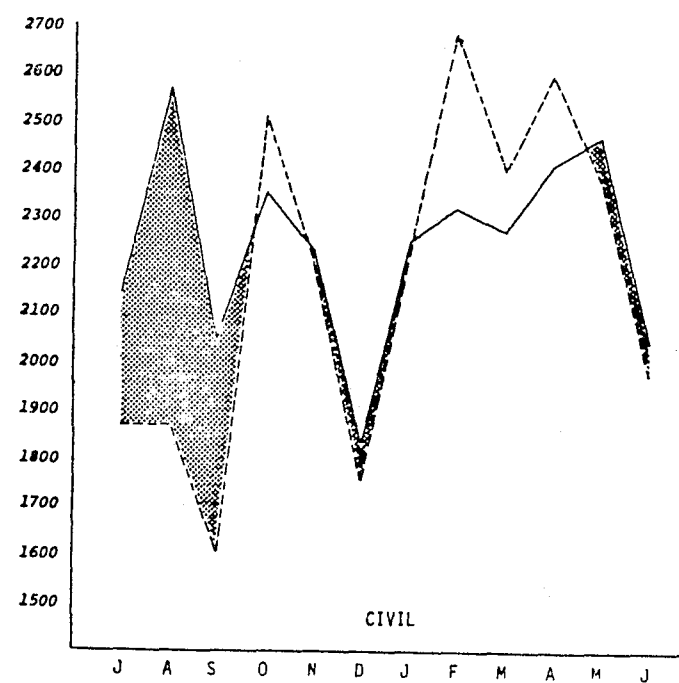
**Division V created effective May 15, 1980. Judge Francke appointed to office by Governor Bruce King.

STATEWIDE DISTRICT COURT CASELOAD 1970-1979

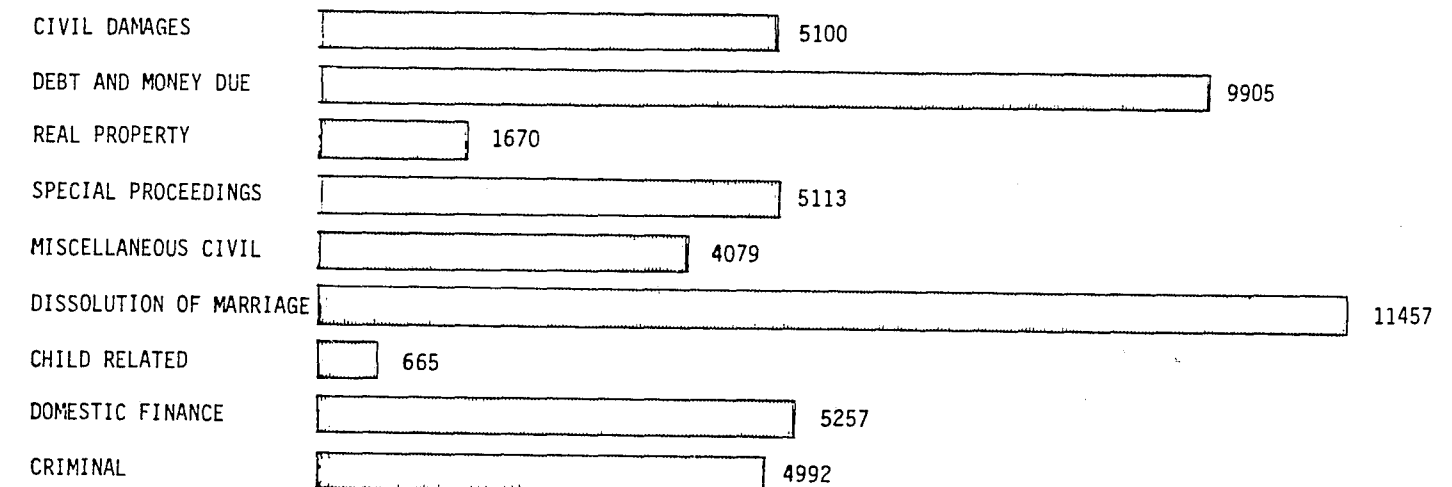


STATEWIDE DISTRICT COURT MONTHLY FILINGS AND DISPOSITIONS 68TH F.Y.

FILED _____ DISPOSED _____
 AREAS INDICATE AN INCREASE IN PENDING



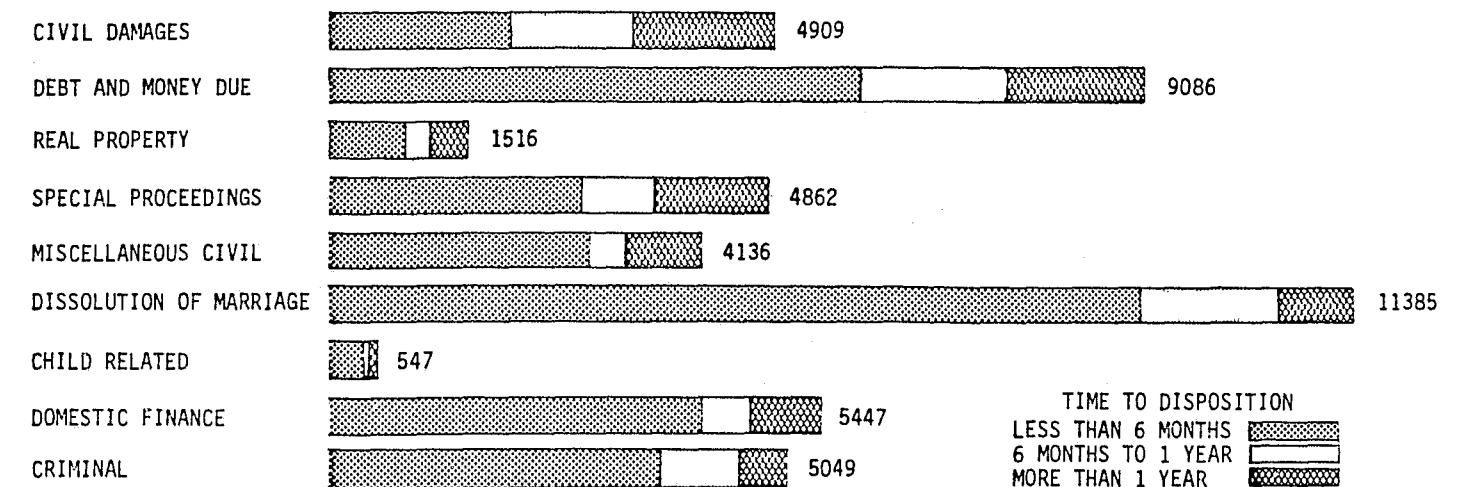
STATEWIDE DISTRICT COURT FILINGS, 68th F.Y. PRESENTED BY CASE TYPE



Civil Damages
 Debt and Money Due
 Real Property
 Special Proceedings
 Miscellaneous Civil
 Dissolution of Marriage
 Child Related
 Domestic Finance
 Criminal

personal injury, wrongful death, malpractice, workman's compensation, property damages, other civil damages.
 foreclosure, condemnation, quiet title, other real property.
 probate, guardianship, trust, adoption, incapacitated, other sequestered proceedings.
 habeas corpus, limited license, change of name, other civil.
 divorce, legal separation, annulment.
 child custody, paternity, termination of parental rights, other child related.
 support, outgoing reciprocal, incoming reciprocal, other domestic finance.

STATEWIDE DISTRICT COURT DISPOSITIONS, 68th F.Y. JULY 1, 1979 - JUNE 30, 1980 PRESENTED BY CASE TYPE



TIME TO DISPOSITION
 LESS THAN 6 MONTHS
 6 MONTHS TO 1 YEAR
 MORE THAN 1 YEAR

DISTRICT COURT CASELOAD REPORT
PRESENTED BY JUDICIAL DISTRICT, JULY 1, 1979 - JUNE 30, 1980

16

	CIVIL CASES				DOMESTIC CASES				CRIMINAL DEFENDANTS				JUVENILE DEFENDANTS				TOTAL 68th FY CASELOAD			
	PENDING	FILED	CLOSED	PENDING	PENDING	FILED	CLOSED	PENDING	PENDING	FILED	CLOSED	PENDING	PENDING	FILED	CLOSED	PENDING	PENDING	FILED	CLOSED	PENDING
	1-July-79	68th F.Y.	68th F.Y.	30-June-80	1-July-79	68th F.Y.	68th F.Y.	30-June-80	1-July-79	68th F.Y.	68th F.Y.	30-June-80	1-July-79	68th F.Y.	68th F.Y.	30-June-80	1-July-79	68th F.Y.	68th F.Y.	30-June-80
1st Judicial District	2594	2250	2139	2705	847	1354	1314	887	421	442	475	388	112	548	402	258	3974	4594	4330	4238
2nd Judicial District	7791	13270	12473	8588	1905	5909	5989	1825	936	1430	1425	941	1130	1950	1630	1450	11762	22559	21517	12804
3rd Judicial District	626	1129	1011	744	275	1478	1355	398	61	238	257	42	28	211	206	33	990	3056	2829	1217
4th Judicial District	1392	578	1355	615	478	409	742	145	206	87	247	46	121	70	40	151	2197	1144	2384	957
5th Judicial District	1597	2742	2166	2173	830	2989	2841	978	299	946	979	266	100	485	487	98	2826	7162	6473	3515
6th Judicial District	687	600	594	693	521	829	763	587	59	167	161	65	45	240	207	78	1312	1836	1725	1421
7th Judicial District	385	575	579	381	192	498	589	101	45	149	140	54	13	125	123	15	635	1347	1431	551
8th Judicial District	831	669	647	853	293	448	487	254	152	185	176	161	7	27	16	18	1283	1329	1326	1286
9th Judicial District	526	831	781	576	241	1060	1087	214	154	402	416	140	66	177	204	39	987	2470	2488	969
10th Judicial District	189	244	227	206	94	177	195	76	38	126	125	39	20	81	61	40	341	628	608	361
11th Judicial District	1337	1484	1451	1370	625	1519	1526	618	210	513	577	146	62	253	227	88	2234	3769	3781	2222
12th Judicial District	462	1179	1055	586	134	898	878	154	140	267	314	93	16	100	100	16	752	2444	2347	849
13th Judicial District	1640	1583	1666	1557	540	925	1089	376	161	234	175	220	32	136	140	28	2373	2878	3070	2181
TOTALS	20057	27134	26144	21047	6975	18493	18855	6613	2882	5186	5467	2601	1752	4403	3843	2312	31666	55216	54309	32573

DISTRICT COURT CASELOAD REPORT
PRESENTED BY COUNTY, JULY 1, 1979 - JUNE 30, 1980

17

COURT	CIVIL CASES				DOMESTIC CASES				CRIMINAL DEFENDANTS				JUVENILE DEFENDANTS				TOTAL 68th FY CASELOAD			
	PENDING	FILED	CLOSED	PENDING	PENDING	FILED	CLOSED	PENDING	PENDING	FILED	CLOSED	PENDING	PENDING	FILED	CLOSED	PENDING	PENDING	FILED	CLOSED	PENDING
	1-July-79	68th F.Y.	68th F.Y.	30-June-80	1-July-79	68th F.Y.	68th F.Y.	30-June-80	1-July-79	68th F.Y.	68th F.Y.	30-June-80	1-July-79	68th F.Y.	68th F.Y.	30-June-80	1-July-79	68th F.Y.	68th F.Y.	30-June-80
SANTA FE	2056	1645	1511	2190	575	958	910	623	324	335	383	276	83	371	263	191	3038	3309	3067	3280
RIO ARRIBA	376	408	420	364	196	265	251	210	60	82	65	77	27	139	109	57	659	894	845	708
LOS ALAMOS	162	197	208	151	76	131	153	54	37	25	27	35	2	38	30	10	277	391	418	250
BERNALILLO	7791	13270	12473	8588	1905	5909	5989	1825	936	1430	1425	941	1130	1950	1630	1450	11762	22559	21517	12801
DONA ANA	626	1129	1011	744	275	1478	1355	398	61	238	257	42	28	211	206	33	990	3056	2829	1217
SAN MIGUEL	946	453	990	409	286	300	486	100	105	56	130	31	89	46	33	102	1426	855	1639	642
GUADALUPE	293	66	240	119	134	66	174	26	64	17	81	0	13	24	5	32	504	173	500	177
MORA	153	59	125	87	58	43	82	19	37	14	36	15	19	0	2	17	267	116	245	138
LODY	487	718	589	616	219	1018	950	287	73	264	248	89	23	180	150	53	802	2180	1937	1045
CHAVES	731	929	673	987	395	796	841	350	127	321	347	101	47	178	200	25	1300	2224	2061	1463
LEA	379	1095	904	570	216	1175	1050	341	99	361	384	76	30	127	137	20	724	2758	2475	1007
GRANT	346	311	322	335	290	534	484	340	23	91	97	17	20	107	94	33	679	1043	997	725
LUNA	165	233	209	189	143	223	206	160	21	55	46	30	11	81	60	32	340	592	521	411
HIDALGO	176	56	63	169	88	72	73	87	15	21	18	18	14	52	53	13	293	201	207	287
SIERRA	131	214	220	125	63	136	193	6	26	52	55	23	0	67	60	7	220	469	528	161
TORRANCE	124	117	144	97	32	125	128	29	11	28	27	12	3	18	15	6	170	288	314	141
SOCORRO	98	202	172	128	77	222	239	60	2	59	46	15	6	34	38	2	183	517	495	205
CATRON	32	42	43	31	20	15	29	6	6	10	12	4	4	6	10	0	62	73	94	41
COLFAX	244	236	224	256	105	163	171	97	49	62	43	68	7	10	7	10	405	471	445	431
UNION	147	110	96	161	36	47	61	22	32	35	30	37	0	3	1	2	215	195	188	222
TAOS	440	323	327	436	152	238	255	135	71	88	103	56	0	14	8	6	663	663	693	633
CURRY	322	627	579	370	193	845	868	170	124	306	320	110	52	142	173	21	691	1920	1940	671
ROOSEVELT	204	204	202	206	48	215	219	41	30	96	96	30	14	35	31	18	296	550	548	298
QUAY	122	185	164	143	73	152	161	64	35	104	112	27	20	64	48	36	250	505	485	270
DE BACA	42	42	45	39	20	24	32	12	0	18	8	10	0	15	11	4	62	99	96	65
HARDING	25	17	18	24	1	1	2	0	3	4	5	2	0	2	2	0	29	24	27	26
MCKINLEY	360	378	365	373	174	427	461	140	49	81	85	45	0	109	95	14	583	995	1006	572
SAN JUAN	977	1106	1086	997	451	1092	1065	478	161	432	492	101	62	144	132	74	1651	2774	2775	1650
OTERO	227	656	567	316	98	700	684	114	102	184	226	60	12	71	73	10	439	1611	1550	500
LINCOLN	235	523	488	270	36	198	194	40	38	83	88	33	4	29	27	6	313	833	797	349
VALENCIA	1324	1183	1324	1183	448	672	820	300	121	182	124	179	26	110	115	21	1919	2147	2383	1683
SANDOVAL	316	400	342	374	92	253	269	76	40	52	51	41	6	26	25	7	454	731	687	498
TOTALS	20057	27134	26144	21047	6975	18493	18855	6613	2882	5186	5467	2601	1752	4403	3843	2312	31666	55216	54309	32573

**DISTRICT COURT SUMMARY, 68th F.Y.
JULY 1, 1979 - JUNE 30, 1980**

JUDICIAL DISTRICT	NUMBER OF JUDGES 68th F.Y.	NUMBER OF CASES FILED	NUMBER OF CASES CLOSED	END OF YEAR PENDING	END OF YEAR BACKLOG (MONTHS)*	AVERAGE NUMBER OF CASES CLOSED PER JUDGE PER MONTH	MIDYEAR DISTRICT POPULATION	FILINGS PER PERSON
CIVIL & DOMESTIC CASES								
1st	4	3604	3453	3592	10.0	71.9	117000	.0308
2nd	14	19179	18462	10413	6.5	109.9	402800	.0476
3rd	2	2607	2366	1142	5.8	98.6	89900	.0290
4th	2	987	2097	760	4.3	87.4	33000	.0299
5th	5	5731	5007	3151	6.9	83.5	154700	.0370
6th	2	1429	1357	1280	11.3	56.5	48500	.0295
7th	2	1073	1168	482	4.9	48.7	31000	.0346
8th	2	1117	1134	1107	11.7	47.3	39400	.0284
9th	2	1891	1868	790	5.1	77.9	58700	.0322
10th	1	421	422	282	8.0	35.2	15200	.0277
11th	3	3003	2977	1988	8.0	82.7	142200	.0211
12th	2	2077	1933	740	4.6	80.5	54800	.0379
13th	3	2508	2755	1933	8.4	76.5	84600	.0296
TOTAL	44	45627	44999	27660	7.1**	85.2	1271800	.0359

*Adjusted to reflect 5 Judges in 1st Judicial District, 14.5 Judges in 2nd Judicial District & 5.5 Judges in 5th Judicial District for the 69th F.Y.

**Adjusted to reflect 46 district court judges for the 69th F.Y.
47 district court judges will hold office on January 1, 1981.

CRIMINAL DEFENDANTS								
1st	4	442	475	388	7.8	9.9	117000	.0038
2nd	14	1430	1425	941	7.6	8.5	402800	.0036
3rd	2	238	257	42	2.0	10.7	89900	.0026
4th	2	87	247	46	2.2	10.3	33000	.0026
5th	5	946	979	266	3.0	16.3	154700	.0061
6th	2	167	161	65	4.9	6.7	48500	.0034
7th	2	149	140	54	4.7	5.8	31000	.0048
8th	2	185	176	161	11.0	7.3	39400	.0047
9th	2	402	416	140	4.0	17.3	58700	.0068
10th	1	126	125	39	3.8	10.4	15200	.0083
11th	3	513	577	146	3.0	16.0	142200	.0036
12th	2	267	314	93	3.5	13.1	54800	.0049
13th	3	234	175	220	15.0	4.9	84600	.0028
TOTAL	44	5186	5467	2601	5.4**	10.4	1271800	.0041

JUVENILE DEFENDANTS								
1st	4	548	402	258	6.1	8.4	117000	.0047
2nd	14	1950	1630	1450	10.3	9.7	402800	.0048
3rd	2	211	206	33	1.9	8.6	89900	.0023
4th	2	70	40	151	44.4	1.7	33000	.0021
5th	5	485	487	98	2.2	8.1	154700	.0031
6th	2	240	207	78	4.5	8.6	48500	.0049
7th	2	125	123	15	1.5	5.1	31000	.0040
8th	2	27	16	18	---	0.7	39400	.0007
9th	2	177	204	39	2.3	8.5	58700	.0030
10th	1	81	61	40	7.9	5.1	15200	.0053
11th	3	253	227	88	4.7	6.3	142200	.0018
12th	2	100	100	16	1.9	4.2	54800	.0018
13th	3	136	140	28	2.4	3.9	84600	.0016
TOTAL	44	4403	3843	2312	6.9**	7.3	1271800	.0035

NOTE 1 Laws 1980, ch. 141, § 2, provides that the office of the fifth district judge in the 1st Judicial District shall be filled on May 1, 1980 by appointment of the Governor.

NOTE 2 Laws 1980, ch. 143, § 2, provides that the office of the fifteenth district judge in the 2nd Judicial District shall be filled by election in 1980, and that the term of office of the judge shall begin on January 1, 1981.

NOTE 3 Laws 1979, ch. 208, § 2, provides that the office of the sixth district judge in the 5th Judicial District shall be filled by election at the general election in 1980, and that the term of office of the judge shall begin on January 1, 1981.

NOTE 4 The district court judges, statewide, each disposed of an average of 85.2 civil and domestic cases, 10.4 criminal defendants and 7.3 juvenile defendants per month. This sums to $(85.2 + 10.4 + 7.3 =) 102.9$ cases disposed per month and $(102.9 \times 12 =) 1235$ cases disposed per district court judge per year. This is a statewide average and should not be interpreted to apply to each district court judge.

WITNESS AND JURY FUND
68th F. Y.

EXPENDITURES FROM JULY 1, 1979 THROUGH JUNE 30, 1980 BASED ON JURY COMPENSATION OF \$2.65 PER HOUR PLUS 17 CENTS PER MILE, WITNESS COMPENSATION OF \$32.00 PER DAY AND 17 CENTS PER MILE:

<u>DISTRICT</u>	<u>EXPENDITURES</u>
FIRST	\$ 184,446.85
SECOND	387,849.39
THIRD	28,223.46
FOURTH	52,000.59
FIFTH	210,610.54
SIXTH	25,918.32
SEVENTH	12,186.20
EIGHTH	49,210.17
NINTH	38,134.71
TENTH	14,001.99
ELEVENTH	39,898.64
TWELFTH	53,797.16
THIRTEENTH	116,590.51
MAGISTRATE	62,192.24
	<u>\$1,275,060.77</u>

JURY COMPENSATION IS \$2.90 PER HOUR PLUS 19 CENTS PER MILE. WITNESS COMPENSATION IS \$36.00 PER DAY AND 19 CENTS PER MILE, EFFECTIVE JULY 1, 1980.

DISQUALIFICATIONS AND OUT OF DISTRICT DESIGNATIONS
JULY 1, 1979 - JUNE 30, 1980

JUDICIAL DISTRICT	JUDGE	AFF.	RECUSAL	TOTAL	OUT OF DISTRICT DESIGNATIONS	
1	Donnelly	18	16	34	0	
	Byrd	23	16	39	0	
	Garcia	10	26	36	3	
	Kaufman	41	7	48	1	
	Francke	9	5	14	0	
2	Stowers	122	27	149	0	
	Baca	58	11	69	0	
	Love	37	14	51	0	
	Riordan	90	27	117	0	
	Fowlie	19	33	52	0	
	Franchini	23	10	33	0	
	Maloney	61	4	65	0	
	Cole	20	21	41	1	
	Madrid	92	21	113	1	
	Sanchez	67	18	85	0	
	Traub	29	34	63	1	
	Baiamonte	17	15	32	0	
	Brown	24	2	26	0	
Brennan	12	20	32	1		
3	Galvan	13	5	18	5	
	Burks	70	22	92	5	
4	Angel	13	0	13	7	
	Martinez	267	4	271	4	
5	Fort	19	16	35	0	
	Snead	7	5	12	2	
	Neal	74	2	76	0	
	Reese	4	3	7	0	
	Walker	22	6	28	1	
6	Hodges	10	5	15	0	
	Hughes	132	2	134	9	
7	Kase	9	12	21	5	
	Marshall	13	13	26	14	
8	Wright	32	11	43	0	
	Caldwell	7	31	38	42	
9	Nieves	6	3	9	13	
	Hensley	14	9	23	5	
10	Frost	3	9	12	15	
11	Musgrove	14	4	18	1	
	DePauli	18	5	23	1	
	Brown	81	22	103	0	
12	Zimmerman	37	2	39	0	
	Doughty	33	21	54	8	
13	Sedillo	208	3	211	0	
	Perez	20	3	23	4	
	Chavez	34	5	39	2	
Judge Pro Tempore						
	Montoya	41				
	Oman	11				
	Felter	5				
TOTALS		57	1,932	550	2,482	151

JUVENILE PROBATION SERVICES

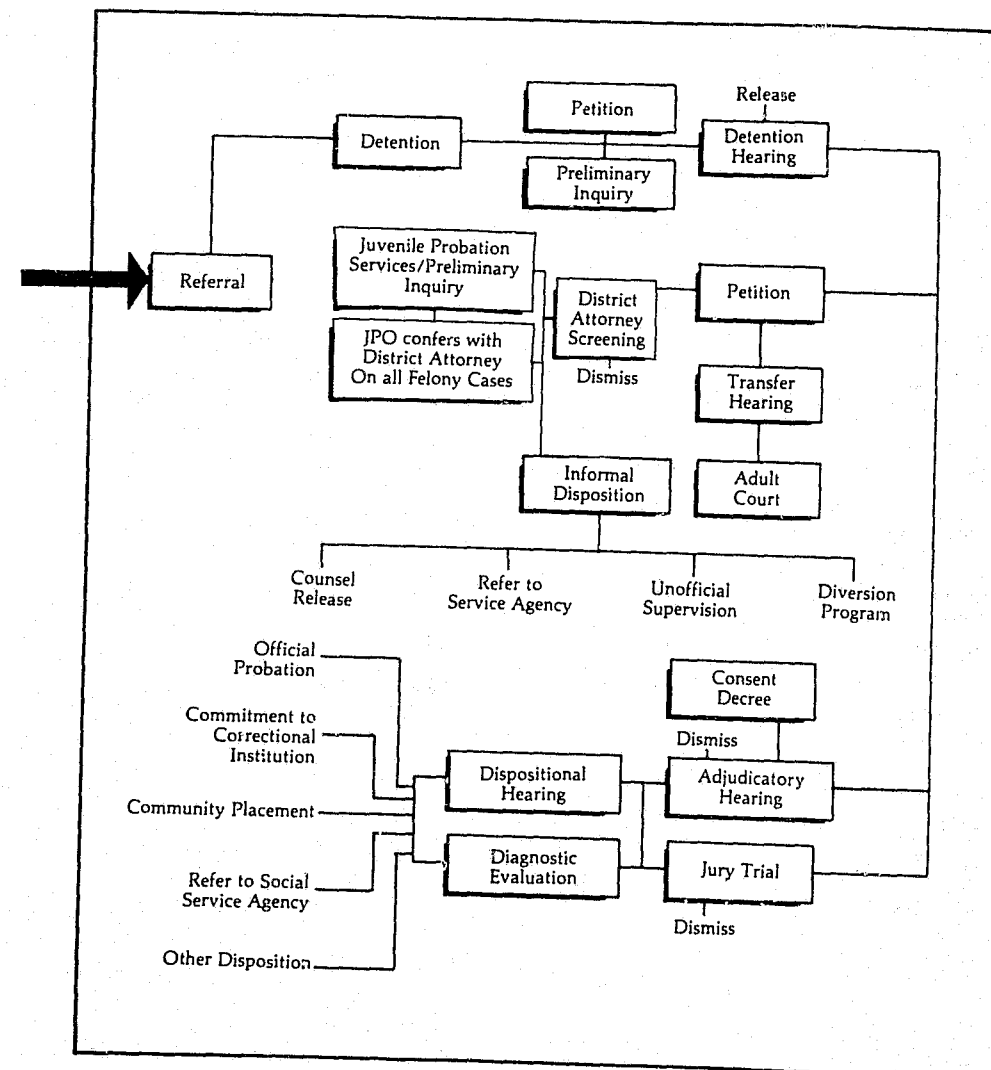
In 1979 the manual Juvenile Justice Information System (JJIS) was initiated as a pilot program. The system of data collection remains a manual system. It was anticipated that JJIS would become computer assisted in 1980. Due to the initiation of a statewide operational judicial information system, JURIS, Administrative Office of the Courts management felt that it would not be cost effective nor appropriate utilization of manpower to automate JJIS since JURIS contains a juvenile module. It is anticipated that JURIS will be totally on line by the 73rd fiscal year.

The information contained in the preceding pages is separated into two categories: official and unofficial referrals. The official referrals are individuals who were the sub-

ject of a petition being filed and appeared in children's court. The unofficial referrals were informally handled and adjusted at the Juvenile Probation Office.

This report reflects dispositions from July 1, 1979 to June 30, 1980. Information is broken down by district and county field office. This is the first representation of uniform data both received and reported. Even though Juvenile Probation Officers are constantly receiving, processing and diverting children from and within the juvenile justice system, this report gives you the most accurate figures available regarding dispositions throughout New Mexico.

CHILDREN'S COURT CASE FLOW CHART



JUVENILE CASES TOTAL FORMAL DISPOSITIONS JULY 1, 1979 - JUNE 30, 1980

Judicial District	County	Certified For Criminal	Probation & Terms	Custody Transfer	Special Program	Consent Decree	Dismissed	Other	Total
1st	SANTA FE	2	81	30	44	53	9	6	225
	RIO ARRIBA	0	35	5	12	25	8	6	91
	LOS ALAMOS	0	6	2	4	15	2	0	29
2nd	BERNALILLO	7	395	88	139	343	248	23	1243
3rd	DONA ANA	2	78	24	4	24	36	0	168
4th	SAN MIGUEL	1	3	2	2	1	1	2	12
	MORA	0	4	0	0	0	1	0	5
	GUADALUPE	0	4	0	0	0	1	0	5
5th	CHAVES	2	51	21	3	1	8	7	93
	LEA / LOVINGTON	2	9	7	0	1	1	5	25
	HOBBS	1	15	8	0	0	5	3	32
	EDDY / CARLSBAD	1	31	14	24	23	9	39	141
	ARTESIA	0	3	1	1	2	1	0	8
6th	GRANT	0	22	8	0	26	17	18	91
	HIDALGO	0	7	10	4	15	7	14	57
	LUNA	0	11	7	4	18	5	15	60
7th	CATRON	0	2	0	0	0	0	2	4
	SOCORRO	0	21	4	1	2	1	2	31
	SIERRA	0	23	5	1	0	4	4	37
	TORRANCE	0	7	0	1	3	0	1	12
8th	TAOS	0	5	1	0	0	0	4	10
	COLFAX	0	0	3	0	2	1	0	6
	UNION	0	1	0	0	0	0	0	1
9th	CURRY	0	66	34	2	16	18	8	144
	ROOSEVELT	0	2	4	0	3	1	2	12
10th	QUAY	0	15	7	0	3	1	12	38
	HARDING	0	0	0	0	0	0	0	0
	DE BACA	0	7	1	0	3	0	0	11
11th	MC KINLEY	0	19	14	21	29	20	12	115
	SAN JUAN	0	19	9	1	1	1	1	32
12th	LINCOLN / RUIDOSO	1	15	1	1	4	2	6	30
	CARRIZO	0	2	2	0	4	0	1	9
	OTERO	1	32	19	0	3	3	5	63
13th	SANDOVAL / BERNALILLO	0	3	3	1	8	4	0	19
	VALENCIA / GRANTS	0	21	12	1	1	9	12	56
	LOS LUNAS	1	10	2	3	3	3	2	24
TOTALS		21	1021	348	274	632	426	212	2934

JUVENILE CASES
TOTAL INFORMAL DISPOSITIONS
JULY 1, 1979 - JUNE 30, 1980

Judicial District	County	Informal	Admin- strative Production	Domestic	Other Agency	Formal	Special Program	Other	Total
1st	SANTA FE	103	22	291	6	177	14	23	636
	RIO ARriba	49	73	186	1	65	8	91	473
	LOS ALAMOS	79	61	84	0	22	50	24	320
2nd	BERNALILLO	956	136	2006	61	901	730	558	5348
3rd	DONA ANA	303	2	341	6	168	98	0	918
4th	SAN MIGUEL	156	16	72	12	10	50	96	412
	MORA	18	1	4	1	0	0	2	26
	GUADALUPE	116	3	4	8	5	0	16	152
5th	CHAVES	20	1	336	4	92	34	81	568
	LEA / LOVINGTON	29	13	6	1	25	0	15	89
	HOBBS	243	73	62	5	32	4	4	423
	EDDY / CARLSBAD	315	72	65	13	94	30	138	727
	ARTESIA	85	65	31	0	8	1	17	207
6th	GRANT	8	39	395	10	91	7	65	615
	HIDALGO	26	7	110	9	46	2	23	223
	LUNA	128	18	13	6	60	9	18	252
7th	CATRON	3	0	3	0	4	1	2	13
	SOCORRO	23	14	31	7	34	2	32	143
	SIERRA	16	9	69	4	36	4	22	160
	TORRANCE	38	2	11	7	11	0	12	81
8th	TAOS	636	132	53	29	6	0	19	875
	COLFAX	359	64	59	35	6	35	40	598
	UNION	60	11	7	11	1	13	5	108
9th	CURRY	194	7	120	4	141	103	11	580
	ROOSEVELT	47	0	18	5	22	2	4	98
10th	QUAY	170	0	1	1	38	15	15	240
	HARDING	0	0	0	0	0	0	0	0
	DE BACA	9	0	0	0	11	0	1	21
11th	MC KINLEY	83	109	144	8	90	40	12	486
	SAN JUAN	161	0	12	3	34	16	47	273
12th	LINCOLN / RUIDOSO	1	2	94	2	26	90	19	234
	CARRIZOZO	5	0	12	0	9	0	2	28
	OTERO	71	26	270	9	60	28	19	483
13th	SANDOVAL / BERNALILLO	51	14	11	1	18	8	6	109
	VALENCIA / GRANTS	211	140	42	0	53	6	58	510
	LOS LUNAS	225	37	10	5	17	31	0	325
TOTALS		4997	1169	4973	274	2413	1431	1497	16754

MAGISTRATE COURTS

New Mexico magistrates preside over courts of limited jurisdiction. Since they derive their powers by legislative enactment, the Legislature can increase or reduce magistrate court jurisdiction, as well as create or abolish individual courts.

By current law, a magistrate's territorial jurisdiction is coextensive with the district or county in which he serves. However, a magistrate may exercise jurisdiction over certain vehicle and game department violations occurring in adjacent districts. They may also sit in any action arising in another district when designated by a district judge.

A magistrate's criminal jurisdiction extends to all misdemeanors. He may levy fines of not more than \$1,000.00 and may impose jail sentences of a definite term of less than one year. A magistrate may conduct preliminary hearings in felony cases, where authorized by law. Civil jurisdiction extends to debts or sums claimed up to \$2,000.00 exclusive of interest and court costs.

On January 1, 1979, the New Mexico magistrate system commenced its tenth year of operation. Seventy-two magistrate judges are currently serving the state, assisted by full and part-time clerical staff, assigned primarily by individual caseloads. Only those magistrates serving in Bernalillo County are required to be members of the New Mexico Bar in qualifying them for election or appointment. All thirty-one additional counties are required only to be high school graduates or the equivalent thereof. There are several magistrates who presently serve as city municipal judges as well. A magistrate benchbook and

magistrate court clerk's manual provide judges and their clerks with step-by-step procedural guidance, listing the duties and responsibilities of this court of limited jurisdiction.

The Administrative Office of the Courts, in compliance with statutory mandate, conducts an annual training seminar which all magistrate judges must attend unless excused by the Chief Justice of the Supreme Court. These training seminars continue to instruct judges in all facets of the operation of their courts.

The 1979 Legislature introduced and passed legislation consolidating the Bernalillo County Magistrate Court, Small Claims Court and the Albuquerque Municipal Court system into a single metropolitan court. This legislation took effect on July 1, 1980, adding six more judges to the magistrate court system. The metropolitan court remains a state court with civil jurisdiction extending to debts and sums claimed up to \$5,000.00 exclusive of interest and costs. In addition to the jurisdiction provided by law for magistrate courts, the metropolitan court has jurisdiction coextensive with the county over all offenses and complaints under ordinances of the county and of any municipality located within Bernalillo County.

In July 1980, the Supreme Court established a Magistrate Study Committee to review and study specific areas of concern within the magistrate court system and make recommendations for its improvement. This committee's recommendations will be considered by the Supreme Court prior to the 1981 legislative session.

**Magistrate Court Judges
1979-80**

<u>COUNTY</u>	<u>JUDGE</u>	<u>COUNTY</u>	<u>JUDGE</u>
Bernalillo	Thomas E. Davis, Presiding Judge H. Richard Blackhurst C. Burton Cosgrove, III Samuel Mandel James M. O'Toole	Los Alamos	Otis A. Farmer
Catron	Ronald Gardner Mary E. Lee	Luna	Manuel T. Holguin
Chaves	L.O. "Tommy" Thompson, Presiding Judge John W. McLemore John R. Moore	McKinley	Lidio G. Rainaldi, Presiding Judge Paris C. Derizotis Minnie Mahler
Colfax	Florence B. Nowlin Les Russell Glada Sanderson	Mora	Levi Alcon
Curry	Ernest C. Trapp, Presiding Judge John H. Spearman	Otero	Robert H. Bradley Nelson L. Naylor Henry M. Prelo
DeBaca	Willard Cook	Quay	J. Bronson Moore Marvin E. Terry
Dona Ana	Robert Rodriguez, Presiding Judge Mike Fajardo Ruben J. Maynez Benjamin B. Rios	Rio Arriba	Baltazar Archuleta Cipriano Vigil
Eddy	H.H. "Bud" Linneweh Donald W. Price	Roosevelt	Jesse Porter
Grant	Y.B. Morales John H. Scholl	Sandoval	Bennie Lovato Richard Velarde
Guadalupe	Delbert A. Garcia Robert E. Nolan	San Juan	J. Ellen Holloway Roy Marcum
Harding	Mae Nucci	San Miguel	Pat Romero Louis E. Vigil
Hidalgo	Rosa Lina Salinas	Santa Fe	Eugene F. Romero, Presiding Judge Isaac R. Archuleta Eugene P. Garcia
Lea	Donald D. Hallam Millard "R.C." Hayes Karen G. Kimble* Virginia Pior Drayton E. Wasson	Sierra	Totsie Norton Williams
Lincoln	Alfred Leroy Montes S.M. Ortiz James R. Wheeler	Socorro	Ignacio N. Garcia
		Taos	Phillip Archuleta Ambrose J. Mascarenas Juan F. Romero Mary Anne G. Romero
		Torrance	Edward J. Birmingham Jean Williams
		Union	Berlin H. Crites
		Valencia	Rebecca Gomez John V. Horacek Toribio L. Perea Gillie Sanchez

*Took office April 14, 1980 replacing Judge Kenneth B. Walker.

**MAGISTRATE CASELOAD FILINGS
JULY 1, 1979 - JUNE 30, 1980**

COUNTY AND DIVISION	TRAFFIC	DRIVING WHILE INTOXICATED	FELONY	MISDEMEANOR	FAILURE TO PAY PEN. ASSES.	CIVIL	TOTAL
1. Bernalillo I	2,862	256	253	540	414	539	4,864
2. Bernalillo II	3,543	229	286	566	448	678	5,750
3. Bernalillo III	3,164	217	223	624	447	581	5,256
4. Bernalillo IV	1,925	92	188	399	342	441	3,387
5. Bernalillo V	2,442	173	244	472	394	555	4,280
6. Catron I	149	8	10	119	3	8	297
7. Catron II	192	5	12	229	24	1	463
8. Chaves I	628	37	289	270	195	240	1,659
9. Chaves II	438	46	200	365	110	492	1,651
10. Chaves III	6	-0-	-0-	3	-0-	57	66
11. Colfax I	240	16	83	193	66	207	805
12. Colfax II	172	9	6	15	57	17	276
13. Colfax III	144	1	4	46	27	23	245
14. Curry I	1,302	41	458	770	188	502	3,261
15. Curry II	890	39	339	365	180	180	1,993
16. De Baca I	179	13	24	82	39	30	367
17. Dona Ana I	1,971	64	318	689	587	338	3,967
18. Dona Ana II	1,564	54	731	522	453	360	3,684
19. Dona Ana III	1,360	7	2	1,429	-0-	136	2,934
20. Dona Ana IV	135	14	7	137	-0-	141	434
21. Eddy I	929	43	299	584	180	1,142	3,177
22. Eddy II	626	39	82	179	83	512	1,521
23. Grant I	879	54	299	312	33	417	1,994
24. Grant II	1,046	61	84	296	167	158	1,812
25. Guadalupe I	394	24	35	92	55	6	606
26. Guadalupe II	103	2	6	16	44	0	171
27. Harding	26	2	7	6	1	3	45
28. Hidalgo	1,067	41	40	1,015	23	87	2,273
29. Lea I	304	10	171	125	36	260	906
30. Lea II	694	26	298	205	198	1,412	2,833
31. Lea III	26	1	2	12	-0-	63	104
32. Lea IV	115	4	19	72	13	2	225
33. Lea V	212	6	7	75	9	45	354
34. Lincoln I	250	23	25	106	55	21	480
35. Lincoln II	51	6	9	54	18	20	158
36. Lincoln III	535	41	174	204	96	264	1,314
37. Los Alamos	321	41	54	167	-0-	124	707
38. Luna	1,052	32	187	103	157	147	1,678
39. McKinley I	2,662	294	189	685	469	249	4,548

COUNTY AND DIVISION	TRAFFIC	DRIVING WHILE INTOXICATED	FELONY	MISDEMEANOR TO PAY PEN. ASSES.	FAILURE TO	CIVIL	TOTAL
40. McKinley II	3,182	250	216	575	520	244	4,987
41. McKinley III	351	5	2	65	38	16	477
42. Mora	162	23	45	59	42	8	339
43. Otero I	1,534	114	182	402	337	340	2,909
44. Otero II	952	97	127	378	253	256	2,063
45. Otero III	800	15	17	72	36	3	943
46. Quay I	1,339	31	273	542	91	94	2,370
47. Quay II	630	2	-0-	321	13	0	966
48. Rio Arriba I	189	30	5	88	23	8	343
49. Rio Arriba II	1,087	94	165	455	276	429	2,506
50. Roosevelt	789	51	225	454	77	856	2,452
51. Sandoval I	1,069	106	51	203	66	70	1,565
52. Sandoval II	646	77	12	94	110	18	957
53. San Juan I	3,021	240	353	542	362	278	4,796
54. San Juan II	2,039	133	398	487	320	2,202	5,579
55. San Miguel I	751	41	228	383	141	862	2,406
56. San Miguel II	25	2	5	58	1	16	107
57. Santa Fe I	1,817	99	621	424	493	571	4,025
58. Santa Fe II	1,908	109	428	410	511	590	3,956
59. Santa Fe III	863	67	25	142	254	32	1,383
60. Sierra	731	62	115	427	265	172	1,772
61. Socorro	943	24	200	367	517	71	2,122
62. Taos I	961	84	25	150	178	145	1,543
63. Taos II	36	3	-0-	22	8	2	71
64. Taos III	16	2	1	18	2	6	45
65. Taos IV	155	23	3	68	3	6	258
66. Torrance II	993	50	30	221	224	41	1,559
67. Torrance III	40	2	24	49	8	24	147
68. Union	197	17	33	124	13	51	435
69. Valencia I	321	34	128	248	3	135	869
70. Valencia II	856	66	186	453	230	198	1,989
71. Valencia III	1,520	118	46	292	149	130	2,255
72. Valencia IV	1,220	44	51	108	356	44	1,823
GRAND TOTALS	65,741	4,186	9,884	20,844	11,531	18,376	130,562

MAGISTRATE ANNUAL REVENUE REPORT
JULY 1, 1979 - JUNE 30, 1980

COURTS	FINES	BOND-FORFEITS	COSTS	OTHER	TOTAL
1. Bernalillo I - V	\$231,158.52	\$33,878.04	\$114,385.50	\$131.25	\$379,553.31
2. Catron I	6,165.00	570.00	1,070.00	15.00	7,820.00
3. Catron II	22,565.00	6,970.00	2,500.00	-0-	32,035.00
4. Chaves I & II	27,089.00	4,010.00	16,530.00	130.80	47,759.80
5. Chaves III	515.00	-0-	720.00	-0-	1,235.00
6. Colfax I	10,364.99	3,600.00	4,440.00	74.25	18,479.24
7. Colfax II	2,600.00	470.00	1,110.00	-0-	4,180.00
8. Colfax III	4,644.12	50.00	2,550.00	80.00	7,324.12
9. Curry I	28,750.50	1,645.00	16,500.00	15.00	46,910.50
10. Curry II	17,406.00	770.00	9,260.00	100.00	27,536.00
11. De Baca I	4,849.00	410.00	1,700.00	-0-	6,959.00
12. Dona Ana I & II	43,985.00	3,155.00	33,740.00	90.42	80,970.42
13. Dona Ana III	20,426.00	97,333.80	13,553.50	-0-	131,313.30
14. Dona Ana IV	6,561.00	35.00	1,760.00	-0-	8,356.00
15. Eddy I	39,422.87	7,560.00	21,335.00	20.00	68,337.87
16. Eddy II	30,720.00	520.00	7,360.00	-0-	38,600.00
17. Grant I	10,020.00	500.00	8,070.00	25.00	18,615.00
18. Grant II	17,260.00	370.00	7,640.00	42.60	25,312.60
19. Guadalupe I	3,160.00	2,407.00	1,590.00	-0-	7,157.00
20. Guadalupe II	345.00	-0-	280.00	10.00	635.00
21. Harding I	805.00	-0-	270.00	-0-	1,075.00
22. Hidalgo I	10,930.00	72,575.00	2,730.00	17.00	86,252.00
23. Lea I	14,685.00	1,030.00	5,410.00	-0-	21,125.00
24. Lea II	25,008.80	360.00	20,840.00	77.00	46,285.80
25. Lea III	235.00	400.00	720.00	-0-	1,355.00
26. Lea IV	6,570.00	1,260.00	1,350.00	-0-	9,180.00
27. Lea V	8,647.00	-0-	2,920.00	-0-	11,567.00
28. Lincoln I	11,569.00	500.00	2,930.00	-0-	14,999.00
29. Lincoln II	4,420.00	205.00	1,060.00	-0-	5,685.00
30. Lincoln III	13,896.00	1,908.00	6,030.00	115.00	21,949.00
31. Los Alamos I	11,869.00	-0-	4,540.00	46.50	16,455.50
32. Luna I	10,048.42	6,765.00	5,200.00	-0-	22,013.42
33. McKinley I	21,245.00	39,645.00	12,715.00	151.00	73,756.00
34. McKinley II	22,246.00	46,350.00	12,460.00	-0-	81,056.00
35. McKinley III	6,353.00	115.00	2,930.00	-0-	9,398.00

COURTS	FINES	BOND-FORFEITS	COSTS	OTHER	TOTAL
36. Mora I	2,810.00	5,050.00	1,580.00	15.00	9,455.00
37. Otero I	64,452.00	3,210.00	14,160.00	35.00	81,857.00
38. Otero II	57,284.00	6,260.00	12,040.00	270.00	75,854.00
39. Otero III	12,606.00	555.00	5,170.00	-0-	18,331.00
40. Quay I	19,712.50	16,568.00	6,610.00	109.00	42,999.50
41. Quay II	12,020.00	43,572.00	2,520.00	-0-	58,112.00
42. Rio Arriba I	5,230.00	100.00	1,935.00	-0-	7,265.00
43. Rio Arriba II	17,979.00	255.00	9,375.00	15.00	27,624.00
44. Roosevelt I	35,491.00	710.00	9,006.00	140.00	45,347.00
45. Sandoval I	18,885.00	480.00	6,460.00	45.00	25,870.00
46. Sandoval II	29,106.00	195.00	4,410.00	-0-	33,711.00
47. San Juan I	61,505.00	3,755.00	17,300.00	130.00	82,690.00
48. San Juan II	48,159.00	460.00	26,895.00	476.00	75,990.00
49. San Miguel I	22,523.00	680.00	9,145.00	14.50	32,362.50
50. San Miguel II	705.00	-0-	1,010.00	-0-	1,715.00
51. Santa Fe I	31,437.24	545.00	17,471.00	844.25	50,297.49
52. Santa Fe II	28,437.00	300.00	17,630.00	960.03	47,327.03
53. Santa Fe III	9,090.00	2,250.00	5,510.00	45.00	16,895.00
54. Sierra I	28,884.00	3,670.00	7,820.00	28.00	40,402.00
55. Socorro I	23,981.00	310.00	8,523.00	15.00	32,829.00
56. Taos I	17,265.00	6,640.00	9,640.00	375.00	33,920.00
57. Taos II	5,990.00	-0-	960.00	.06	6,950.06
58. Taos III	1,680.00	-0-	500.00	2,000.00	4,180.00
59. Taos IV	2,829.00	350.00	1,090.00	-0-	4,269.00
60. Torrance II	22,487.00	3,440.00	8,190.00	64.00	34,181.00
61. Torrance III	785.00	-0-	810.00	10.00	1,605.00
62. Union I	12,615.00	5,300.00	2,370.00	-0-	20,285.00
63. Valencia I	6,290.00	-0-	4,940.00	40.00	11,270.00
64. Valencia II	18,036.00	135.00	10,557.00	49.00	28,777.00
65. Valencia III	21,130.00	5,019.00	10,030.00	-0-	36,179.00
66. Valencia IV	5,575.00	14,365.00	3,350.00	60.00	23,350.00
Grand Totals	\$1,341,512.96	\$459,540.84	\$585,206.00	\$6,880.66	\$2,393,140.46

NOTES: Lea III Vacant August 1979 Thru March 1980.

SUBSIDIARY JUDICIAL AGENCIES

Supreme Court Building Commission

The Supreme Court Building Commission was created by the 1967 session of the Legislature and is composed of three resident New Mexico members appointed by the Supreme Court. The commission has responsibility for the care, custody and control of the Supreme Court Building, its grounds and all furniture, fixtures and equipment used by Judicial agencies housed therein. Under the supervision of the building superintendent, the present maintenance staff performs the continuous duties of building repair and maintenance. Although commission members meet regularly, they are not compensated for time spent in meetings discussing commission matters.

Supreme Court Law Library

During fiscal year 1979-80 the library circulated 60,669 books. This figure is down from the previous year because borrowers have been asked to return books used to the shelf where they got them. The accession count of bound volumes in the library on June 30, 1980 was 100,958. Approximately 110 items per day were received and processed throughout the year. In addition to bound volumes some 27,300 items were received and evaluated for processing. About one-tenth of that number will eventually become part of the library permanent collection. One thousand eight hundred sixty bound volumes were acquired.

The significant increase in the price of law books (as much as 400% in some cases) is reflected in the cost of maintaining a law library. Many items are no longer available free which once were acquired without charge.

The law library now has 301 exchange agreements in force with law schools, state libraries and other court

STATEMENT OF REVENUES AND EXPENDITURES FROM JULY 1, 1979 THROUGH JUNE 30, 1980

REVENUE:

Beginning Balance.....\$251,559.36
District Court Fees.....\$48,912.50
Interest On Investments.....\$20,874.10 69,786.60
Total Revenue.....\$321,345.96

EXPENDITURES:

Interest Payment On Bonds.....\$12,156.05
Required Bond Redemption.....50,000.00
Discretionary Bond:
Redemption
Call\$80,000.00
Premium On
Bond Call.....1,450.00
Total Bond Call Expenses..\$81,450.00
Paying Agent's Fee.....48.13
Total Expenditures.....\$143,654.18
Excess Revenue Over Expenditures.....177,691.78
Reserve Fund.....53,378.44
Total Revenue.....\$231,070.22

libraries in all the states except Alaska. Some 359 bound volumes, or more than one-sixth of the total number of bound volumes acquired last year, were obtained through these agreements. Over 800 issues of law reviews and bar journals also come from this source. The cooperation of the New Mexico State Bar Association has enabled the library to establish over 80 exchange agreements, primarily for law reviews, which saved the State of New Mexico a considerable amount of money.

Installation of the new book charging system was begun the last week of this fiscal year. Considerable improvement in control of materials has been evidenced even though the new system is not fully operational.

More than 68,000 photocopies were made during the past year, a 14% increase over last year. This service makes library materials increasingly more available for use.

NEW MEXICO JUDICIAL COUNCIL
April 9, 1980

The Judicial Council was created by statute in 1969 to study the operations of the judicial system and make recommendations for improvements to the Legislature and the Supreme Court. The 19-member council is composed of judges, legislators, laymen and agency directors,

and meets monthly to initiate studies, receive reports, discuss ideas for judicial improvements, and decide which proposals should be recommended to the Supreme Court or Legislature. A report on the yearly activities may be found in the Judicial Council's annual report.

Appointed by the Supreme Court

Justice H. Vern Payne
 NM Supreme Court
 P.O. Box 848
 Santa Fe, NM 87501 - 827-2710

Magistrate Lidio Rainaldi
 P.O. Box 37
 Gallup, NM 87301 - 722-6636

Appointed by the Court of Appeals

B.C. Hernandez, Presiding Judge
 P.O. Box 2008
 Santa Fe, NM 87501 - 827-2214

Appointed by the District Judges

Judge Eugene Franchini
 Second Judicial District
 P.O. Box 488
 Albuquerque, NM 87103 - 842-3269

Judge N. Randolph Reese
 Fifth Judicial District
 P.O. Box 1619
 Hobbs, NM 88240 - 393-6101

Judge James L. Brown
 Eleventh Judicial District
 San Juan County Courthouse
 Aztec, NM 87401 - 334-6151

Appointed by the Legislature

** Senator Manny M. Aragon
 P.O. Drawer Z
 Albuquerque, NM 87103 - 842-1322

Senator Tom Rutherford
 1133 Montclair Drive NE
 Albuquerque, NM 87110 - 265-8695

Rep. Reginald A. Begaye
 P.O. Box 74
 Tohatchi, NM 87325 - 733-2304

Rep. Hal Stratton
 6214 Flor del Sol Pl., NW
 Albuquerque, NM 87120 - 243-3547

* Chairman
 ** Vice-chairman

Appointed by the Board of Bar Commissioners

* Russell D. Mann, Esq.
 P.O. Drawer 700
 Roswell, NM 88201 - 622-6221

Marshall Martin, Esq.
 P.O. Box 1769
 Albuquerque, NM 87103 - 842-8155

Appointed by Governor

Dr. James A. Beall
 P.O. Box 1444
 Ruidoso, NM 88345 - 257-2305

Ms. Mary Margaret Wilson
 4005 Van Buren NE
 Albuquerque, NM 87110 - 265-8711

Mrs. Jo-Carol Ropp
 1040 Larry Drive
 Las Cruces, NM 88001 - 522-2088

Ira Robinson, District Attorney
 P.O. Box 488
 Albuquerque, NM 87103 - 766-4300

Ex-Officio

Attorney General Jeff Bingaman
 P.O. Box 1508
 Santa Fe, NM 87501 - 982-6905

Dean Robert Desiderio
 UNM School of Law
 1117 Stanford NE
 Albuquerque, NM 87131 - 277-2146

Edward J. Baca, Director
 Administrative Office of the Courts
 Supreme Court Bldg., Room 130
 Santa Fe, NM 87503 - 827-2771

Staff

David R. Gardner, Executive Secretary
 P.O. Box 4007
 Albuquerque, NM 87196 - 842-3102
 867-5563

Virginia Davis, Secretary - 842-3102

JUDICIAL STANDARDS COMMISSION

The Judicial Standards Commission is the state agency which investigates complaints against judges. It holds hearings to gather evidence, and reports its findings, conclusions and recommendations to the Supreme Court. Based upon the findings of the commission, the Supreme Court may discipline, remove or retire a judge.

Not all complaints fall within the jurisdiction of the commission. It has no authority to overturn the ruling of a judge. Only a higher court can do that. The commission only has authority to take action where the complaint alleges that a judge acted in willful violation of the law or judicial ethics, that he failed to act altogether or was incompetent to act, was habitually drunk or was by reason of physical or mental disability unable to perform a judge's duties.

Complaints need only be submitted in writing — no form is required. A complainant is asked to have his signature notarized.

The commission is composed of five non-lawyers, two lawyers, and two judges. One of the non-lawyers serves as chairman.

**Judicial Standards Commission Statistics
 for Fiscal Year 1979-1980**

Complaints pending at beginning of FY	10
Complaints filed during FY	35
Complaints disposed of during FY	35
Complaints pending at end of FY	10

The complaints filed during the FY were against:	
District judges	10
Magistrates	15
Municipal judges	7
Appellate judges and justices	2
Probate and Small Claims judges	1

Dispositions during FY	
Not within Commission jurisdiction	15
Complaint withdrawn	2
Investigated and found insubstantial	7
Investigated and referred for counseling	6
Judge remedied situation	4
Formal hearing and recommendation of discipline	1

Members

	<u>Term Expires</u>		<u>Term Expires</u>
Judge Paul Snead P.O. Box 1776 Roswell, NM 88201 622-2212	June 30, 1984	Susan S. Dixon 827 East Zia Santa Fe, NM 87501 982-2132	June 30, 1984
** Judge Thomas A. Donnelly P.O. Box 2268 Santa Fe, NM 87501 827-5348	June 30, 1981	* Lucy M. Salazar P.O. Box 2153 Albuquerque, NM 87103 766-3024	June 30, 1983
Charles D. Olmsted P.O. Box 669 Santa Fe, NM 87501 982-4611	June 30, 1982	Doris Wakeland Route 8, Box 149-3 Silver City, NM 88061 538-9015	June 30, 1982
James E. Sperling P.O. Box 2168 Albuquerque, NM 87103 243-4511	June 30, 1984	Dr. John W. Hernandez Box 3196 N.M. State University Las Cruces, NM 88003 646-3233	June 30, 1981
Eloy A. Duran P.O. Box 4059 Albuquerque, NM 87196 247-8952	June 30, 1985	* Chairman ** Vice-chairman	

September 2, 1980

DISCIPLINARY BOARD STATISTICAL REPORT
CALENDAR YEAR 1980

(Note: All figures in parentheses are 1977 totals for comparison)

	1979	1980
Caseload carried over from preceding year	(98)	120
New Contracts	(466)	314
Staff Level Disposition	(359)	228
Docketed for Investigation	(204)	195
In Suspense, awaiting further information		11
Docketed Cases Disposed Of	1979	1980
By Dismissal	(68)	35
Tried and Acquitted	0	2
Reinstated	0	1
Public Censure	0	0
Formal Reprimand	0	1
Suspended With Probation	(2)	1
Took Inactive Status	0	0
Informal Admonition	(13)	6
Disbarred	(1)	0
Totals	(84)	46
Docketed Cases Not Disposed as of End of Year		
Investigation by Asst. Couns.	(98)	109
With Reviewing Officer	(8)	6
With Chief Counsel	0	6
With Special Investigator	0	1
In Suspense	(2)	27
Before Hearing Committees	(12)	0
Before Disciplinary Board	0	0
Before Supreme Court	0	0
Charges in Preparation	0	0
	(120)	149

CASELOAD FOR THE YEAR

206

END