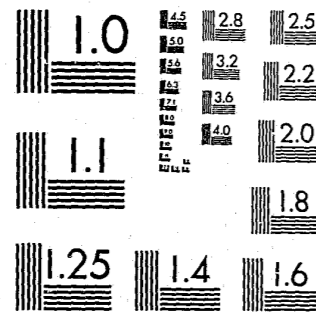


National Criminal Justice Reference Service



This microfiche was produced from documents received for inclusion in the NCJRS data base. Since NCJRS cannot exercise control over the physical condition of the documents submitted, the individual frame quality will vary. The resolution chart on this frame may be used to evaluate the document quality.



MICROCOPY RESOLUTION TEST CHART
NATIONAL BUREAU OF STANDARDS-1963-A

Microfilming procedures used to create this fiche comply with the standards set forth in 41CFR 101-11.504.

Points of view or opinions stated in this document are those of the author(s) and do not represent the official position or policies of the U. S. Department of Justice.

National Institute of Justice
United States Department of Justice
Washington, D. C. 20531

3-25-82

no letter request

STATE OF CALIFORNIA
Edmund G. Brown, Governor
YOUTH AND ADULT CORRECTIONS AGENCY
Richard A. McGee, Administrator
DEPARTMENT OF CORRECTIONS
Walter Dunbar, Director
DIVISION OF RESEARCH
John P. Conrad, Chief

*cut of
C sent 4-12-82*

*Please return to
B Book after
processing.*

A Bibliography

on violent and aggressive behavior

by Paul S. D. Berg, Ph.D.
and Robert R. Tyler, M.A.



80944

State of California

Edmund G. Brown, Governor

Youth and Adult Corrections Agency

Richard McGee, Administrator

Department of Corrections

Walter Dunbar, Director

Division of Research

John Conrad, Chief

Research Report No. 17

A BIBLIOGRAPHY ON AGGRESSIVE AND VIOLENT BEHAVIOR (1930-60)

By

Paul Berg, Ph.D.

and

Robert Tyler, M.A.

NCJRS

SEP 3 1981

ACQUISITIONS

May 1965

U.S. Department of Justice 80944
National Institute of Justice

This document has been reproduced exactly as received from the person or organization originating it. Points of view or opinions stated in this document are those of the authors and do not necessarily represent the official position or policies of the National Institute of Justice.

Permission to reproduce this copyrighted material has been granted by

The California Department of
Corrections

to the National Criminal Justice Reference Service (NCJRS).

Further reproduction outside of the NCJRS system requires permission of the copyright owner.

This bibliography has been prepared to fulfill a request by the Director of Corrections, Walter Dunbar. It is hoped that the bibliography will be of some assistance to persons studying and working with the violent offender in the California Department of Corrections.

We are indebted to Mrs. Tess Farrell, Mrs. Jean Farris, and Mrs. Pat Miller, who assisted in the production of this document.

Paul S. D. Berg, Ph.D.

Robert Tyler

"A"

- ABRAHAMSON, D.
Crime and the Human Mind. New York: Columbia Univ. Press, 1944.
- ABRAHAMSON, D. S.
Study of sex offenders at Sing Sing. Fed. Prob., 1950, 14:26-32.
- ABRAMS, S.
A refutation of Eriksen's sensitization-defense hypothesis.
J. proj. Tech., 1962, 26.
- ACKERMAN, N. W. & HAJODA, M.
Anti-Semitism and Emotional Disorder. New York: Harper, 1950.
- ADELSON, L.
Slaughter of the innocents; a study of 46 homicides in which the victims were children. New England J. Med., June 29, 1961, 264:1345-49. Study based on records of Cuyahoga County Coroners Office.
- ADORNO, T., FRENKEL-BRUNSWIK, E., LEVINSON, D., & SANFORD, R.
The Authoritarian Personality. New York: Harper, 1950.
- AINSWORTH, MARY D. & AINSWORTH, L.
Acculturation in East Africa: II. Frustration and aggression.
J. soc. Psychol., 1962, 57:401-407.
- ALBEE, G. W.
Patterns of aggression in psychopathology. J. consult. Psychol., 1950, 14:465-468.
- ALBEE, G. W. & GOLDMAN, ROSALINE
The picture-frustration study as a predictor of overt aggression.
J. proj. Tech., 1950, 14:303-308.
- ALBERT, R. S.
The role of mass media and the effect of aggressive film content upon children's aggressive responses and identification choices. Genet. Psychol. Monogr., 1957, 55:221-285.
- ALEXANDER, F.
Discussion of "Hostility and Fear in Social Life." by John Dollard, 1938, 17:27-29.
- ALEXANDER, F.
Emotional factors in essential hypertension. Psychosom. Med., 1939, 1:173-179.
- ALEXANDER, F.
The psychiatric aspects of war and peace. Amer. J. Sociol., 1941, 46:504-520.
- ALEXANDER, F.
A contribution to the theory of play. Psychoanal. Quart., 1958, 27:175-193.

- ALEXANDER, F.
Psychosom. Med. New York: Norton, 1950.
- ALEXANDER, L.
War crimes: social and psychologic aspects. Amer. J. Psychiat., 1948, 105:170-177.
- ALEXANDER, R. P. & POPE, H. L., JR.
The negative transference; some comments on its manifestations, development, and management. Amer. J. Psychother., 1956, 10:5-17.
- ALLEE, W. C.
Animal Aggressions. Chicago: University of Chicago Press, 1931.
- ALLEE, W. C., NISSEN, H. W. & NIMKOFF, M. F.
A re-examination of the concept of instinct. Psychol. Rev., 1953, 60:287-297.
- ALLEN, F. H.
Aggression in relation to emotional development, normal and pathological. Ment. Hyg., 1950, 34:353-363.
- ALLEN, R. M.
Discussion on the "Psychiatric study of William Heirens." J. crim. Law Criminol. & Police Sci., May-June 1948, 39:49-51.
- ALLINSMITH, B. B.
Parental discipline and children aggression in two social classes. Unpublished doctor's dissertation, Univ. of Michigan, 1954.
- ALLISON, J. & HUNT, D. E.
Social desirability and the expression of aggression under varying conditions of frustrations. J. consult. Psychol., 1959, 23:528-532.
- ALLPORT, G. W.
Personality. New York: Holt, Rinehart & Winston, 1937.
- ALLPORT, G. W.
The Nature of Prejudice. Cambridge, Mass.: Addison-Wesley, 1954.
- ALTMAN, L. L.
On the oral nature of acting out. J. Amer. Psychoanal. Assn., 1957, 5:648-662.
- AMMONS, CAROL H. & AMMONS, R. B.
Research and clinical applications of the doll-play interview. J. Pers., 1952, 21:1.
- AMMONS, CAROL H. & AMMONS, R. B.
Aggression in doll play; interview with two to six-year-old white males. J. genet. Psychol., 1953, 82:105-213.
- AMMONS, R. B.
Reactions in a projective doll-play interview of white males two to six years of age to differences in skin color and facial features. J. genet. Psychol., 1950, 76:323-341.
- AMMONS, R. B. & AMMONS, H. S.
Parent preferences in young children's doll-play interviews. J. abnorm. soc. Psychol., 1949, 44:4.
- AMSEL, A.
The role of frustrative non-reward continuous reward situations. Psychol. Bull., 1958, 55:102-119.
- ANASTASI, A., COHEN, N. & SPATZ, D.
A study of fear and anger in college students through the controlled diary method. J. genet. Psychol., 73:243-249.
- ANDERSON, D. E.
Personality variables in verbal conditioning. Unpublished doctor's dissertation, Univ. of Nebraska, 1958.
- ANSBACHER, H. L. & ANSBACHER, R. R.
The Individual Psychology of Alfred Adler. New York: Basic Books, 1956.
- ANSLINGER, H. J. & OURSLER, W.
The Murders: The Story of the Narcotic Gangs. New York: Farrar, 1961.
- ANTHONY, E. J.
A technique for the objective assessment of the child's family relationships. J. ment. Sci., 1957, 103:541.
- APPEL, M. H.
Aggressive behavior of nursery school children and adult procedures in dealing with such behavior. J. exp. Educ., 1942, 11:185-199.
- APFELBERG, G., SUGAR, C. & PFEIFFER, A. Z.
A psychiatric study of 250 sex offenders. Amer. J. Psychiat., 1944, 100:762-770.
- ARCHER, R. H.
A preliminary study of hostility: The hostility ratio. Psychiat. Quart., 1961, 35:562-574.
- ARIEFF, A. J. & ROTMAN, D. B.
Psychopathic personality; some social and psychiatric aspects. J. crim. Law Criminol. & Police Sci., July-August 1948, 39:158-166.
- ARON, R.
Conflict and war from the viewpoint of historical sociology. The Nature of Conflict, Sociol. Assn., Paris: UNESCO, 1957.
- ARSENIAN, J. M.
Young children in an insecure situation. J. abnorm. soc. Psychol., 1943, 38:225-249.
- ASTRACHAN, M.
Psychological investigation of a homicidal youth. J. clin. Psychol., 1949, 5:88-93.
- ATKINSON, J. W.
Explorations using imaginative thought to assess the strength of human motives. In M. R. Jones (Ed.), Nebraska Symposium on Motivation, Lincoln, Nebraska: Univ. of Nebraska Press, 1954.

- AUGUST, I. & FOX, V.
Factors in homicides committed by 200 males. J. soc. Psychol.,
July, 1956, 26:37.
- AUSUBEL, D. P.
Negativism as a phase of ego development. Amer. J. Orthopsychiat.,
1950, 20:796-805.
- AVIGDOR, R.
The development of stereotype as a result of group interaction.
Unpublished doctor's dissertation, New York: University, 1952.
Cited in M. Sherif & C. Sherif, Groups in Harmony and Tension,
New York: Harper, 1953.
- AX, A.
The psychological differentiation of fear and anger in humans.
Psychosom. Med., 1953, 15:433-442.
- AYMON, O.
Personality type of patient with arterolar essential hypertension.
Amer. J. Med. Sci., 1933, 186:213-223.

"B"

- BACH, G. R.
Young children's play fantasies. Psychol. Monogr., 1945, 59, No. 272.
- BACH, G. R.
Father-fantasies and father-typing in father-separated children.
Child Developm., 1946, 17:63-80.
- BACON, Catherine L.
The role of aggression in the asthmatic attack. Psychoanal. Quart.,
1956, 25:309-324.
- BAILYN, L.
Mass media and children: A study of exposure and conflict effects.
Psychol. Monogr., 1959, 73, No. 471.
- BAK, R. C.
The schizophrenic defense against aggressions. J. Amer. Psychoanal.
Assn., 1954, 35:129-135.
- BANAY, R. S.
Study of a murder for revenge. J. Crim. Psychopath, July 1941, 3:1-10.
- BANAY, R. S.
A study of 22 men convicted of murder in the first degree. J. crim.
Law Criminol. & Police Sci., July-August, 1943, 34:106-111. Murderers
tend to be 35 years old, healthy, unemployed, and guilty of previous
felonies.
- BANAY, R. S.
Homicide among children. Fed. Prob., January-March, 1947, 11:11-19.
Traces life courses and reactions of young persons involved in homicide
for five years following offense.
- BANAY, R. S.
The psychopathic adolescent offender. Nat. Prob. Parole Assn., 1949,
42:57-64.
- BANAY, R. S.
Study in Murder. Ann. Amer. Acad. Pol. Soc. Sci., November, 1952,
284:26-34.
- BANAY, R. S.
Conversation with a mass murderer. J. Soc. Ther., First Quarter, 1956,
2:4-26.
- BANAY, R. S.
The dynamics of homicide, the urge to kill. In "Motivation for murder;
a forum sponsored by the Institute for Forensic research and the Metro-
politan Law Enforcement Conference." J. Soc. Ther., First Quarter, 1959,
5:43-75.
- BANAY, R. S.
Violent youth. J. Soc. Ther., Fourth Quarter, 1960, 6:207-215. Before
Medical Correctional Association of America, Tokyo, September, 1960.
Increase in number and seriousness of crimes committed by the young people.

- BANDURA, A.
The Rorschach white space response and "oppositional" behavior.
J. consult Psychol., 1954, 18:17-21.
- BANDURA, A.
Relationship of family to child behavior disorders. Progress Report
to National Institute of Mental Health on Grant M-1734, Stanford Univ., 1960.
- BANDURA, A. & HUSTON, A. C.
Identification as a process of identical learning.
J. abnorm. soc. Psychol., 1961, 63:311-318.
- BANDURA, A., LIPSHER, D. H., & MILLER, P. E.
Psychotherapist approach avoidance reactions to patients expressions
of hostility. J. consult. Psychol., 1960, 24:1-8.
- BANDURA, A., ROSS, DOROTHEA, & ROSS, SHEILA A.
Transmission of aggression through imitation of aggressive models.
J. abnorm. soc. Psychol., 1961, 63:575-582.
- BANDURA, A., ROSS, DOROTHEA, & ROSS, SHEILA A.
Imitation of film-mediated aggressive models. J. abnorm. soc. Psychol.,
1963, 66:3-11.
- BANDURA, A. & WALTERS, R.
Dependency conflicts in aggressive delinquents.
J. soc. Issues, 1958, 14:52-64.
- BANDURA, A. & WALTERS, R.
Adolescent Aggression. New York: Ronald Press, 1959.
- PANKS, CHARLOTTE
Violence. Howard Journal, 1962, 11(1):13-25. Analysis of small
boys (16-20) convicted of violence and sent to Penal Institutions.
- BARBER, X. T.
Antisocial and criminal acts induced by hypnosis. Gen. Psychiat.,
1961, 5:301-312.
- BARD, P. A.
A diencephalic mechanism for the expression of rage with special reference
to the sympathetic nervous system. Amer. J. Physiol., 1928, 84:480-515.
- BARD, P. A.
Central nervous mechanisms for the expression of anger in animals.
In M. L. Reymert (Ed.), Feelings and Emotions, New York: McGraw-Hill, 1950.
- BARD, P. A. & MACHT, M. B.
The behavior of chronically decerebrate cats. In Wolstenhole, G.E.W. (Eds.),
Neurological Basis of Behavior, Boston: Little-Brown, 1958.
- BARKER, R. G., DEMBO, T., & LEWIN, K.
Frustration and regression; an experiment with young children.
Univ. Ia. Stud. Child Welf., 1941, 18:1-314.
- BARNETT, S. A.
Displacement behavior and psychosomatic disorder. Lancet, 2,
1955, 1203-1208.
- BARUCH, DOROTHY W.
Common emotional problems of childhood. Amer. acad. gen. Practice, 1955.
- BARUCH, DOROTHY W. & MILLER, H.
Developmental needs and conflicts revealed in children's art.
Amer. J. Orthopsychiat., 1952, 22:1.
- BASS, B. M.
Development of a structured disguised personality inventory.
J. appl. Psychol., 1956, 40:393-397.
- BASS, B. M.
Validity studies of a Proverbs personality test. J. appl. Psychol.,
1957, 41:158-160.
- BATESON, G.
The frustration-aggression hypothesis and culture. Psychol. Rev., 1941,
48:350-355.
- BEACH, F. A.
The decent of instinct. Psychol. Rev., 1955, 62:401-410.
- BEARDSLEE, B. A.
The learning of two mechanisms of defense. Unpublished doctor's
dissertation, Univ. of Michigan, 1955.
- BEEMAN, E. A.
The effect of male hormones on aggressive behavior in mice.
Physiol. Zool., 1947, 20:373-405.
- BELLAK, L.
The concept of projection. Psychiatry, 1944, 7:353-370.
- BELLAK, L.
Acting out: Some conceptual and therapeutic considerations. Paper
delivered at Emil Guthrie lectures, New York, 1962.
- BELLER, E. K. & HAEBERLE, A. W.
Dependency and frustration-aggression hypothesis. Paper presented at
1959 meeting of East. Psychol. Assn., Atlantic City, New York: April, 1959.
- BENDER, L.
The treatment of aggression: III. Aggression in children. Amer. J.
Orthopsychiat., 1943, 13:392-399.
- BENDER, L.
Psychopathic behavior disorders in children. In R. Lindler & R. Sleiger
(Eds.), Handbook of Correctional Psychology, New York: Philosophical
Library, 1947.
- BENDER, L.
Aggression, Hostility, and Anxiety in Children. Springfield, Illinois:
Charles A. Thomas, 1953. Biblio. Suicide, homicidal aggression, firesetting.

- BENDER, L.
Children and adolescents who have killed. Amer. J. Psychiat.,
December, 1959, 116:510-513.
- BENDER, L. & CURRAN, F. J.
Children and adolescents who kill. J. Crim. Psychopath., April, 1940,
1:297-322, Biblio. (25 items).
- BENDIG, A. W.
A factor analysis of scales of emotionality and hostility.
J. clin. Psychol., 1961, 17:189-192.
- BENDIG, A. W.
Factor analysis of the Guilford Zimmerman Temperament Survey
and the Maudsley Personality Inventory. J. gen. Psychol., 1962, 67:21-26.
- BENDIG, A. W.
A factor analysis of personality scales including the Buss-Durkee
hostility inventory. J. gen. Psychol., 1962, 66:179-183.
- BENDIG, A. W.
Factor analytic scales of covert and overt hostility. J. consult.
Psychol., 1962, 26:200. (excerpt and full text)
- BENNETT, C. M. & JORDAN, J. E.
Security -- insecurity and the direction of aggressive responses
to frustration. J. clin. Psychol., 1958, 14:166-167.
- BENSING, R. C. & SCHROEDER, O., JR.
Homicide in an Urban Community. Springfield, Illinois: Charles C. Thomas,
1950. Homicide in Cuyahoga County, Ohio, during 1947-1953.
- BERES, D.
Clinical notes on aggression in children. Psychoanal. Stud. Child.,
1952, 52:241-263.
- BERG, I. A. & FOX, V.
Factors in homicide committed by 200 males. American Psychologist,
October, 1946, 1:461. Study of men sentenced to State Prison of
Southern Michigan.
- BERG, I. A. & FOX, V.
Factors in homicide committed by 200 males. J. soc. Psychol., August, 1947,
26:109-119, Biblio. (18 items). Study of men sentenced to State Prison of
Southern Michigan.
- BERG, P. S. D.
Neurotic and psychopathic criminals: some measures of ego syntonicity,
impulse socialization, and perceptual consistency. Unpublished doctor's
dissertation, Michigan State Univ., 1963.
- BERG, P. S. D. & TOCH, H. H.
"Impulsive" and "neurotic" inmates. A study in personality and perception.
J. crim. Law Criminol. & Police Sci., 1964, 55:230-234.
- BERGLER, E.
Mystery fans and the problem of "potential murderers." Amer. J.
Orthopsychiat., April, 1945, 15:309-317. Readers of detective
stories as "criminologically" speaking harmless people.
- BERGLER, E.
Differential diagnosis between "normal" and "neurotic" aggression.
Quart. Rev. Psychiat. Neurol., 1946, 1:15.
- BERKOWITZ, L.
The expression and reduction of hostility. Psychol. Bull., 1958, 55:257-283.
- BERKOWITZ, L.
Anti-semitism and the displacement of aggression. J. abnorm. soc. Psychol.,
1959, 59:182-187.
- BERKOWITZ, L.
Repeated frustrations and expectations in hostility arousal. J. abnorm.
soc. Psychol., 1960, 60:422-429.
- BERKOWITZ, L.
Some factors affecting the reduction of overt hostility. J. abnorm. soc.
Psychol., 1960, 60:14-21.
- BERKOWITZ, L.
Manifest hostility level and hostile behavior. J. soc. Psychol.,
1960, 52:165-171.
- BERKOWITZ, L.
The judgmental process in personality functioning. Psychol. Rev.,
1960, 67:130-142.
- BERKOWITZ, L.
Aggression: A Social Psychological Analysis. New York: McGraw-Hill,
1962, Biblio.
- BERKOWITZ, L.
Aggressive stimuli, aggressive responses and hostility catharsis. In
J. H. Masserman (Ed.), Science and Psychoanalysis, New York: Grune &
Stratton, 1963.
- BERKOWITZ, L., CORWIN, R., & HEIRONIMUS, M.
Film violence and subsequent aggressive tendencies. Pub. Opin. Quart.,
1963, 27:217-229.
- BERKOWITZ, L. & DANIELS, L. R.
Responsibility and dependency. J. abnorm. soc. Psychol., 1963, in press.
- BERKOWITZ, L. & GREEN, J. A.
The stimulus qualities of the scapegoat. J. abnorm. soc. Psychol.,
1962, 64(4):293-301.
- BERKOWITZ, L., GREEN, J. A., & MACAULAY, JACQUELINE R.
Hostility catharsis as the reduction of emotional tension.
Psychiatry, 1962, 25:23-31.

- BERKOWITZ, L. & HOLMES, D. S.
The generalization of hostility to disliked objects.
J. Pers., 1959, 27:567-577.
- BERKOWITZ, L. & HOLMES, D. S.
A further investigation of hostility generalization to disliked objects. J. Pers., 1960, 28:427-442.
- BERKOWITZ, L. & RAWLINGS, EDNA
Effects of film violence on inhibitions against subsequent aggression.
J. abnorm. soc. Psychol., 1963, 66:405-412.
- BERLYNE, D. E.
Conflict, Arousal and Curiosity. New York: McGraw-Hill, 1960.
- BERNARD, J., PEAR, T. H., ARON, R. & ANGELL, R. C.
(In collaboration with the International Sociological Association)
The Nature of Conflict: Studies on the Sociological Aspects of International Tension. Paris: UNESCO, 1957.
- BETTELHEIM, B.
Dynamics of anti-semitisms in gentile and Jew. J. abnorm. soc. Psychol., 1957, 42:153-168.
- BETTELHEIM, B. & JANOWITZ, M.
Dynamics of Prejudices. New York: Harper, 1950.
- BEUKENKAMP, C.
Phantom patricide. Arch. Gen. Psychiat. (A.M.A.) 3:282-288.
- BEVAN, W., DAVES, W. F. & LEVY, G. W.
The relation of castration, androgen therapy and pre-test fighting experience to competitive aggression in male mice. (C57BL/10)
Animal Behavior, 1960, 8:6-12.
- BIALICK, I.
The relationships between reactions to authority figures on the TAT and overt behavior in an authority situation by hospital patients. Unpublished doctor's dissertation, Univ. of Pittsburgh, 1951.
- BIBRING, E.
The development and problems of the theory of the instincts.
Int. J. Psychoanal., 1941, 22:102-131.
- BIENENFELD, F. R.
Justice, aggression, and eros. Int. J. Psychoanal., 1957, 38:419-427.
- BILLS, R. E.
A validation of changes in scores on the index of adjustment and values as measures of changes in emotionality. J. consult. Psychol., 1953, 17:135-138.
- BINDER, A. K., MCDONNELL, C. & SJOHOLM, N. A.
Verbal conditioning as a function of experimental characteristics.
J. abnorm. soc. Psychol., 1957, 55:308-314.
- BINDRA, D.
An interpretation of the "displacement" phenomenon. Brit. J. Psychol., 1959, 50:262-268.
- BINGER, C. A. L., ACKERMAN, N. W., SCHROEDER, H. A. & STEELE, J. N.
Personality in arterial hypertension. Psychosom. Med. Monogr., 1945, No. 8.
- BINGER, D.
On so-called psychogenic causes in essential hypertension.
Psychosom. Med., 1951, 13:273-276.
- BIRKENFIELD, F. R.
Justice, aggression, and eros. J. Psychoanal., 38:419-427.
- BIXLER, R. A.
How G. S. became a scapegoater. J. abnorm. soc. Psychol., 1948, 43:230-232.
- BLACK, J. D. & THOMAS, H.
Is satisfaction with self a measure of adjustment. J. abnorm. soc. Psychol., 1955, 51:254-259.
- BLACKMAN, N., WEISS, J. M. A., & LAMBERTI, J. W.
The sudden murderer: a preliminary report. J. Soc. Ther., 1958, 7.
- BLACKMAN, N., WEISS, J. M. A., & LAMBERTI, J. W.
The sudden murderer: III. Clues to preventive intention.
Gen. Psychiat., 1963, 8:289-294.
- BLOCK, J. & MARTIN, B.
Predicting the behavior of children under frustration.
J. abnorm. soc. Psychol., 1955, 51:281-285.
- BOARD, FRANCIS A.
Psychological stress and endocrine functions. Psychosom. Med., 1956, 18:324-333.
- BOGARDUS, E. S.
Racial distance changed in the United States during the past 30 years.
Sociol. soc. Res., 1958, 43:127-134.
- BOOKSPUN, A.
Hostility in children with idiopathic epilepsy. Dis. Abstr., 1961, 22:1248.
- BORNSTON, FRIEDA L. & COLEMAN, J. C.
The relationship between certain parents' attitudes toward child rearing and the direction of aggression of their young adult offspring.
J. clin. Psychol., 1956, 12:41-44.
- BOWLBY, J.
Aggression in relation to emotional development: Normal and pathological. Paper read at Psychiatric Section, Royal Society of Medicine, London, 9.12.47 (unpublished).

- BOYD, R. W.
Outbreaks of gang destructive behavior in a psychiatric ward.
J. nerv. ment. Dis., 1954, 120:338-347.
- BOYER, L. B.
Uses of delinquent behavior by a borderline schizophrenic.
Arch. Crim. Psychodyn., Summer 1957, 2:541-569.
- BRADY, E. B. & ROSWOLD, H. E.
Influence of prefrontal lobotomy on social interaction in a monkey group. Psychosom. Med., 1952, 14:406-515.
- BRANHAM, V. C.
The psychopathic delinquent. Pris. World, September-October 1950, 2:21-22.
- BRAGER, L.
Conformity as a function of the ability to express hostility.
J. Pers., 1963, 31.
- BRENNER, L. B.
Hostility and Jewish group identification. Dis. Abstr., 1961, 22:1248.
- BRENNER, M. S.
The relationship between TAT hostility and overt hostility as a function of self-reported anxiety. Dis. Abstr., 1961, 22:637-638.
- BRIDGES, K. M. B.
Emotional development in early infancy. Child Developm., 1932, 3:324-341.
- BROCK, T. C. & BUSS, A. H.
Dissonance, aggression and evaluation of pain.
J. abnorm. soc. Psychol., 1962, 65:197-201.
- BROFENBRENNER, U.
Socialization and social class through time and space. In Eleanor MacCoby, T. M. Newcomb, and E. L. Hartley (Eds.), Readings in Social Psychology (3rd ed.), New York: Holt, Rinehart & Wilson, 1958.
- BROMBERG, W.
A psychological study of murder. Int. J. Psychoanal., 1951, 32(2):117-127, Biblio. (20 items).
- BROMBERG, W.
Psychological study of murder. In Edward Podolsky (Ed.), Encyclopedia of Aberrations. New York: Philosophical Library, 1953.
- BROMBERG, W.
The Mold of Murder: A Psychiatric Study of Homicide. New York: Grune & Stratton, 1961, Biblio. (152 items). The "normal" murder; death on the distaff side; the psychopath.
- BROWN, J. S.
The generalization of approach responses as a function of stimulus intensity and strength of motivation. J. comp. Psychol., 1942, 33:209-226.
- BROWN, J. S.
Gradients of approach and avoidance and their relation to level of motivation. J. comp. Physiol. Psychol., 1948, 41:450-465.
- BROWN, J. S.
Principals of intrapersonal conflict. Conflict Resolution, 1957, 1:135-154.
- BROWN, J. S. & FARBER, I. E.
Emotions conceptualized as intervening variables -- with suggestions toward the theory of frustration. Psychol. Bull., 1951, 48:465-495.
- BROWN, R. W.
A determinant of the relationship between rigidity and authoritarianism. J. abnorm. soc. Psychol., 1953, 48:469-476.
- BROWN, R. W.
Mass phenomena. In G. Lindzey (Ed.), Handbook of Social Psychology, Vol. 2, Reading, Mass.: Addison-Wesley, 1954.
- BUCH, C. & HOBBS, G. E.
The problem of specificity in psychosomatic illness.
J. Psychosom. Res., 1959, 3:228.
- BUCHER, R.
Blame and hostility in disaster. Amer. J. Sociol., 1957, 62:467-475.
- BULATAO, JAIME C.
The direction of aggression in clinically depressed women.
Dis. Abstr., 1961, 22:1249.
- BUNKER, H. A.
Mother-murder in myth and legend: A psychoanalytic note.
Psychoanal. Quart., April, 1944, 13:198-207.
- BURIK, T. E.
An investigation of perceptual and interpretive processes of a group of overtly aggressive as contrasted with a group of overtly non-aggressive schizophrenic patients. Unpublished doctor's dissertation, Fordham Univ., 1952.
- BURKE, J. C. & SCHROEDER, P. L.
Unstable offender. Pris. Assn. New York, Annual Report, 1947, 103:95-99.
- BURKE, J. C. & SCHROEDER, P. L.
Unstable offender. Central States News (Central States Correctional Conference), 1948, 2-10.
- BURKS, H. L. & HARRISON, S. I.
Aggression in infancy and childhood. Amer. J. Orthopsychiat., 1962, 32:416-422.
- BURLINGAME, C. C.
The violent sex offender - criminal or sick? Inst. Living, Digest of Neur. Psychiat., 1950, 18:267-268.

- BURNSTEIN, E. & WORCHEL, P.
Arbitrariness of frustration and its consequences for aggression
in a social situation. J. Pers., 1962, 30:4.
- BUSS, A. H.
The effect of item style on social desirability and frequency of
endorsement. J. consult. Psychol., 1956, 52.
- BUSS, A. H.
Stimulus generalization and aggressive verbal stimuli. J. exp. Psychol.,
1961, 61:469-473.
- BUSS, A. H.
Supplementary report: Generalization of a nonverbal response to aggressive
verbal stimuli. J. exp. Psychol., 1962, 63:413-414.
- BUSS, A. H.
Physical aggression in relation to different frustrations.
J. abnorm. soc. Psychol., 1963, 67:1-7.
- BUSS, A. H. & BROCK, T. C.
Repression and guilt in relation to aggression.
J. abnorm. soc. Psychol., 1963, 66:345-350.
- BUSS, A. H., DURKEE, ANN, & BAER, M.
The measurement of hostility in clinical situations.
J. abnorm. soc. Psychol., 1956, 52:84-86.
- BUSS, A. H. & DURKEE, ANN
An inventory for assessing different kinds of hostility.
J. consult. Psychol., 1957, 21:343-349.
- BUSS, A. H. & DURKEE, ANN
Conditioning of hostile verbalizations in a situation resembling a
clinical interview. J. consult. Psychol., 1958, 22:411-418.
- BUSS, A. H. & FOLIART, R.
Role-playing aggression and the catharsis hypothesis. Unpublished
research, 1958.
- BUSS, A. H. & SHIPMAN, VIRGINIA
The scaling of verbally aggressive statements. Unpublished research, 1957.
- BUSS, A. H. & SIMMONS, A. J.
Aggression and hostility in psychiatric patients.
J. consult. Psychol., 1962, 26:84-89.
- BUTLER, F. O.
The defective delinquent. Amer. J. Ment. Defic., July 1942, 47:7-13.
During 1931-1941, 39 per cent of admissions to California Institution
for Mental Defectives were defective delinquents.
- BUTLER, F. O.
The defective delinquent. Crime Prevention Digest (State Bar of Calif.),
April-June, 1943, 2:1-11. During 1931-1941, 39 per cent of admissions
to California Institution for Mental Defectives were defective delinquents.

- BYRNE, D.
The relationship between humor and the expression of hostility.
J. abnorm. soc. Psychol., 1960, 24:18-22.
- BYRNE, D., BARRY, J., & NELSON, D.
Relation of the revised repression-sensitization scale to
measures of self-description. Psychol. Rep., 1963, 13:323-334.

- CAIN, A. C.
The pre-superego "Turning inward" of aggression. Psychoanal. Quart., 1961, 30:171-208.
- CAIN, A. C.
On "playing crazy" and identity problems in some borderline psychotic children. American Orth-psychiatric Association Meetings, March, 1961.
- CAINE, T. M.
The expression of hostility and guilt in melancholic and paranoid women. J. consult. Psychol., 1960, 24:18-22.
- CAMERON, D. E.
The conversion of passivity into normal self-assertion. Amer. J. Psychiat., 1951, 108:89-102.
- CANN, T. K. & CROWNE, D. P.
Instigation to aggression, emotional arousal and defensive emulation. J. Pers., 1964, 32:163-179.
- CANNON, W. B.
Bodily Changes in Pain, Hunger, Fear, and Rage. New York: Appleton, 1929.
- CANNON, W. B.
Neural organization for emotional expression. In M. L. Reymert (Ed.), Feelings and Emotions, New York: McGraw-Hill, 1950.
- CANTRIL, H.
The Psychology of Social Movements. New York: Wiley, 1941.
- CANTRIL, H.
The invasion from Mars. In Eleanor MacCoby, R. M. Newcomb, & E. L. Hartley (Eds.), Readings in Social Psychology (3rd ed.), New York: Holt, Rinehart, & Winston, 1958.
- CARPENTER, C. C.
Aggressive behavior and social dominance in the six-lined racerunner. Animal Behavior, 1960, 8:61-66.
- CARPENTER, L. G.
Relation of aggression in the personality to outcome with electro-convulsive shock therapy. J. gen. Psychol., 1957, 3-22.
- CARTWRIGHT, D. & ZANDER, A. (Eds.)
Group Dynamics (2nd ed.). Evanston, Illinois: Row, Peterson, 1960.
- CASON, H.
Common annoyances: A psychological study of everyday aversions and annoyances. Psychol. Monogr., 1930, 40, N. 182.
- CASON, H.
The attitudes of the psychopath. J. clin. Psychol., July, 1948, 4:276-281.
Study of 620 inmates of Psychopathic Unit, Medical Center for Federal Prisoners, Springfield, Mo.

- CASON, H.
The characteristics of the psychopath. Amer. J. Psychiat.,
September, 1948, 105:211-219. Study of 500 inmates at the Medical
Center for Federal Prisoners, Springfield, Mo.
- CASSITY, J. H.
Personality study of 200 murderers. J. Crim. Psychopath.,
January, 1941, 2:296-304.
- CHAPMAN, L. J.
A search for lunacy. J. nerv. ment. Dis., 1961, 132:171-174.
- CHAREN, S.
The awareness of hostile feelings in patients by their nurses.
J. consult. Psychol., 1955, 19:290.
- CHARLIN, A.
Aggressiveness in the child: Its relation to delinquency.
Ann. med. Leg. (Parris), 1949, 30:30-34.
- CHARTERS, W. W.
Motion Pictures and Youth: A Summary. New York: MacMillan, 1935.
- CHASEI, ELEANOR H. & LAWRENCE, MARGARET S.
Some antecedents of aggression and effects of frustration in doll play.
In D. McClelland (Ed.), Studies in Motivation, New York: Appleton-
Century-Crofts, 1955.
- CHORNYAK, J.
Some remarks on the diagnosis of the psychopathic delinquent. Amer. J.
Psychiat., May, 1941, 97:1326-1340, Biblio. (16 items). Particular
reference to the egocentric, emotional unstable type psychopathic personality.
- CHOROST, S. B.
Parental child-rearing attitudes and their correlates in adolescent
aggression. Dis. Abstr., 1961, 21:2782.
- CHRISTIE, R. & JAHODA, MARIE (Eds.)
Studies in the Scope and Method of the "Authoritarian Personality."
Glencoe, Illinois: Free Press, 1954.
- CLARK, L. D.
A comparative view of aggressive behavior. Amer. J. Psychiat.,
1962, 119:336-341.
- CLARKE, J. R.
The effect of fighting on the adrenals, thymus, and spleen of the mole
(Microtus Agrestis). J. Endocr., 1953, 9:114-126.
- CLECKLEY, H.
The psychopath: A problem for society. Fed. Prob., October-December, 1946,
10:22-25.
- CLINARD, M. B.
Sociology of Deviant Behavior. New York: Holt, Rinehart, & Winston, 1957.
- CLOWARD, R. A.
Illegitimate means, anomie and deviant behavior. Amer. sociol. Rev.,
1959, 24:164-176.
- CODERE, H. L.
Fighting with property. Ethnol. Soc. Pub., 1950, 18:1792.
- COHEN, A. K.
Delinquent Boys. New York: Free Press, 1955.
- COHEN, A. R.
Social norms, arbitrariness of frustration, and status of the agent of
frustration in the frustration-aggression hypothesis. J. abnorm. soc.
Psychol., 1955, 51:222-226.
- COHEN, F.
Hostility and psychotic symptoms. Psychiat. Quart., 1954, 28:264-278.
- COHEN, F.
The relationship between delusional thinking and hostility.
Psychiat. Quart., 1956, 30:303-321.
- COHEN, F.
Goal specified therapy: A group therapy utilizing principles of the
AA program. Submitted for publication November 7, 1963.
- COHEN, F.
Alcoholics Anonymous Principles and the treatment of emotional illness.
Ment. Hy., 1964.
- COHEN, L. H. & COFFIN, T. E.
The pattern of murder in insanity: A criterion of the murderer's
abnormality. J. crim. Law Criminol. & Police Sci., November-December, 1946,
37:262-287. Study of 18 cases of murderers examined psychiatrically,
adjudged insane, and committed to a State Mental Hospital.
- COHEN, R. E.
Limit setting as a corrective ego experience. Gen. Psychiat.,
1963, 8:68-73.
- COHN, F. S.
Fantasy aggression in children as studied by the doll play technique.
Child Develpm., 1962, 33:235-250.
- COLORADO UNIVERSITY
Crimes of Violence; the report of a conference on crime sponsored by
the University of Colorado, August 14-18, 1949, Boulder: 1950.
- CONRAD, S. J.
A study of preschool children. Amer. J. Orthopsychiat., 1948, 181:340-344.

- CONVERSE, P. E.
The shifting role of class in potential attitudes and behavior.
In Eleanor MacOby, R. M. Newcomb, & E. L. Hartley (Eds.), Readings in Social Psychology (3rd ed.), New York: Holt, Rinehart, & Winston, 1958.
- COOK, W. W. & MEDLEY, D. M.
Proposed hostility and pharisaic-virtue scales for the MMPI. J. appl. Psychol., 1954, 38:414-418.
- CORKE, PATRICIA P.
A comparison of frustration-aggression patterns of negro and white southern males and females. Dis. Abstr., 1962, 22:2870.
- CORMIER, B. M.
Psychodynamics of homicide committed in a marital relationship. Corr. Psychiat. J. soc. Ther., 1962, 8:187-194.
- CORMIER, B. M. & BOYER, R.
Retaliation and primitive justice. Paper read at 12th Int. course on Criminol., September, 1962, Hebrew Univ., Jerusalem.
- COROTTO, L. V. & CURNUTT, R. H.
The effectiveness of the Bender-Gestalt in differentiating a flight group from an aggressive group of adolescents. J. consult. Psychol., 1960, 24:368-369.
- COUNTS, R. M. & MENSCH, I. N.
Personality characteristics in hypnotically induced hostility. J. clin. Psychol., 1950, 325-330.
- COWAN, P. A. & WALTERS, R. H.
Studies of reinforcement of aggression: I. Effects of scheduling. Child Develpm., 1963, 34:543-551.
- COWEN, E. L., LANDES, J., & SCHAET, D. E.
The effect of mild frustration on the expression of prejudiced attitudes. J. abnorm. soc. Psychol., 1959, 58:33-38.
- COX, E. N.
Some effects of frustration: I. A methodological programme. Aust. J. Psychol., 1952, 4:94-106.
- CRAFT, M.
Psychopathic personalities: A review of diagnosis, aetiology, prognosis and treatment. Brit. J. Crim., January, 1961, 1:237-253. Review of current literature.
- CRESPI, L. P.
Public opinion toward conscientious objectors: V. National tolerance, wartime trends, and the scapegoat hypothesis. J. Psychol., 1945, 20:321-346.
- CRUVANT, B. A. & WALDROP, F. N.
The murderer in a mental institution. Ann. Amer. Acad. Polit. Soc. Sci., November, 1952, 284:35-44. Study of persons committed to St. Elizabeth's Hospital, District of Columbia, under charge or conviction of homicide, 1925-1951.

CULBERTSON, E., GUTHERIE, G. M., & BUTLER, A. J.
Patterns of hostility among the retarded. Amer. J. ment. Def., 1961, 66:421-427.

CURNUTT, R. H. & COROTTO, L. V.
The use of Bender Gestalt cut-off scores in identifying juvenile delinquents. J. proj. Tech., 1960, 24:4.

CURTIS, GEORGE C.
Violence breeds violence -- perhaps? Amer. J. Psychiat., 1963, 120:386-387.

CUSHING, J. G. N. & CUSHING, MARY
A concept of the genesis of hostility. Bull. Menninger Clin., 1949, 13:94-99.

CUTLER, H. S. G.
Aggressive response strength as a function of interference with goal-oriented responses near to and far from their goal. Dis. Abstr., 1963, 23:2608-2609.

- DAB, A. K.
Criminal and anti-social behavior. Calcutta Medical Journal, 1947.
- DAHLKE, H. O.
Race and minority riots--a study in the typology of violence.
Soc. Forces, 1952, 30:419-425.
- DARROW, C. W.
A mechanism for functional effects of emotion on the brain and behavior -
A symposium. Comp. Psychol. Monogr., 1950, 20:51-60.
- DAVIDS, A., HENRY, A. F., MCARTHUR, C. C., & MCNAMARA, L. F.
Projection, self-evaluation and clinical evaluation of aggression.
J. consult. Psychol., 1955, 19:437-440.
- DAVIDS, A., KIDDER, CATHERINE, & REICH, M.
Time orientation in male and female delinquents.
J. abnorm. soc. Psychol., 1962, 64:239-240.
- DAVIDS, A. & OLIVER, GERALDINE
Learning, performance, and retention under stress in emotionally
disturbed and normal children. J. Pers., 1960, 28:3.
- DAVIDS, A. & OLIVER, GERALDINE
Fantasy aggression and learning in emotionally disturbed and normal
children. J. proj. Tech., 1960, 24:124-128.
- DAVIE, M. R.
The Evolution of War. New Haven: Yale, 1929.
- DAVIES, J. C.
Toward a theory of revolution. Amer. sociol. Rev., 1962, 27:5-19.
- DAVIS, J. E. & TOLOR, A.
Aggressive behavior of staff members in a neuropsychiatric setting.
Ment. Hyg., 1959, 43:545-554.
- DAVITZ, J. R.
The effects of previous training on post frustration behavior.
J. abnorm. soc. Psychol., 1952, 47:309-315.
- DAWE, H. C.
An analysis of two hundred quarrels of preschool children.
Child Develpm., 1934, 5:139-157.
- DEAN, LOIS R.
Aging and the decline of affect. J. Gerontol., 1962, 17:440-446.
- DEFOREST, I.
The self-dedication of the psychoneurotic sufferer to hostile protest
and revenge. Psychiat. Quart., 1950, 24:706-715.

- DESOTO, C. B.
Learning a social structure. J. abnorm. soc. Psychol., 1960, 60:417-421.
- DEUTSCH, M.
The effects of cooperation and competition upon group process.
Hum. Relat., 1949, 2:129-152 and 199-231.
- DEVEREAUX, G.
Neurotic crime vs. criminal behavior. Psychiat. Quart., 1951, 25:73-80.
- DEVOS, G. A.
A quantitative approach to affective symbolism in Rorschach responses.
J. proj. Tech., 1952, 16:133-150.
- DEVOS, G. A.
Manual of criteria for scoring affective inferences. (Revision of
above, November, 1961).
- DIAMOND, B. L.
Identification and the sociopathic personality. Arch. Crim. Psychodyn.,
Spring, 1961, 456-465. "Where there is no identification, we are all
sociopaths."
- DIERS, W. C.
A study of the effectiveness of verbalization in the homeostatic recovery
from displacement induced by verbal-aggressive stimuli. Unpublished
doctor's dissertation, Univ. of Cincinnati, 1955.
- DIETHELM, O.
Predictable association: Certain emotional and biochemical changes in
blood. A. Res. Nerv. & Ment. Dis. Proc., 1950, 29:262-278.
- DILLON, GEORGIANA
A preliminary study of the relationship of hostility on the Buss-Durkee
Hostility Inventory to alcoholism and tuberculosis. Paper read at 17th
annual convention of the California State Psychological Asso., San
Francisco, 1963.
- DI MASIRO, A., BOYD, R. W., & GREENBLATT, M.
Physiological correlates of tension and antagonism during psychotherapy.
Psychosom. Med., 1957, 19:99-104.
- DINWIDDIE, F. W.
An application of the principle of response generalization to the
prediction of aggressive responses. Unpublished doctor's dissertation,
Catholic University of America, 1954.
- DITTES, J. E. & KELLEY, H. H.
Effects of different conditions of acceptance upon conformity to group
norms. J. abnorm. soc. Psychol., 1956, 53:100-107.
- DITTMANN, A. T. & GOODRICH, D. W.
A comparison of social behavior in normal and hyperaggressive preadolescent
boys. Child Develpn., 1961, 32:315-327.

- DOEHRING, M.
A test of a training procedure designed to increase the intensity of angry
verbalization. Unpublished doctor's dissertation, Univ. of Pittsburg, 1958.
- DOLLARD, J.
Hostility and fear in social life. Soc. Forces, 1938, 17:15-25.
- DOLLARD, J., DOOB, L. W., MILLER, N. E., MOWRER, O. H., & SEARS, R. R.
Frustration and Aggression. New Haven: Yale University Press, 1939.
- DOLLIN, ADELAIDE & REZNIKOFF, M.
TAT stories and the social desirability variable.
Percept. mot. Skills, 1961, 13:281-282.
- DOOB, L. W.
The behavior of attitudes. Psychol. Rev., 1947, 54:135-156.
- DOOB, L. W. & SEARS, R. R.
Factors determining substitute behavior and the overt expression of
aggression. J. abnorm. soc. Psychol., 1939, 34:293-313.
- DUNCAN, G. M., FRAZIER, S. H., LITIN, E. M., JOHNSON, A. M., & BARRON, A. J.
Etiological factors in first degree murder. J. A. M. A., 1958, 168:1755.
- DURBIN, E. F. & BOWLBY, J.
Personal Aggressiveness and War. New York: Columbia, 1939.
- DYCKMAN, LOUISE M.
The effect of shared and unshared threat upon the arousal and
expression of aggression. Dis. Abstr., 1960, 21:981.

- EAGLE, M. N.
The effects of subliminal stimuli of aggressive content upon conscious cognition. Dis. Abstr., 1961, 21(12):3849.
- EASSON, W. M. & STEINHILBER, R. M.
Murderous aggression by children and adolescents. Arch. Gen. Psychiat. (A. M. A.), January, 1961, 4:1-9, Biblio. (21 items). Review of eight cases of boys (8-16 years) at Mayo Clinic.
- EASTERBROOK, J. A.
The effect of emotion on cue utilization and the organization of behavior. Psychol. Rev., 1959, 66:183-201.
- EDWARDS, A. E.
Manual for the Edwards Personal Preference Schedule. New York: Psychological Corp., 1954.
- EDWARDS, A. L.
The relationship between the judged desirability of a trait and the probability that the trait will be endorsed. J. appl. Psychol., 1953, 37:90-93.
- EHRENREICH, G. A.
Headache, necrophilia, and murder. Bull. Menninger Clin., November, 1960, 24:278-287. A brief hypnotherapeutic investigation of a Negro soldier who murdered a prostitute.
- EHRLICH, M. P.
The selective role of aggression in concept formation. Dis. Abstr., 1963, 62:3318.
- EINSTEIN, A.
Why War? Letter to Professor Freud, Int. Inst. of Intellectual Cooperation, League of Nations, 1933.
- EKMAN, P. & FRIESEN, W. V.
The conditioning of hostile responses to photographs of peers. Paper read at Eastern Psychological Assn., 1960.
- ELIASBERG, W.
He murdered to get hanged. Psychoanal. Rev., April, 1952, 39:164-168. A pre-analytical case history of 1783.
- ELIZUR, A.
Content analysis of the Rorschach with regard to anxiety and hostility. J. proj. Tech., 1949, 13:247-284.
- ELLIS, A.
A young woman convicted of manslaughter. Clin. Psychol., 1951, 2(1):9-34.
- ELLSWORTH, R. B.
The effects of hostility on related verbal problem-solving behavior. Unpublished doctor's dissertation, Pennsylvania State Univ., 1953.

- EMERY, F. E.
Psychological effects of the Western film: A study in television viewing. Hum. Relat., 1959, 12:195-232.
- EMERY, W. J. D.
The female homicide. Thesis (M. A.), Univ. of Oklahoma, 1951.
- ENGEL, G. L.
Electroencephalographic and psychological studies of a case of migraine with severe pre-headache phenomena. Psychosom. Med., 1953:15:344.
- ERON, L. D.
Relationship of TV viewing habits and aggressive behavior in children. J. abnorm. soc. Psychol., 1963, 67:2.
- ERON, L. D., BANTA, T. J., WALDER, L. O., & LAULICHT, J. H.
Comparison of data obtained from mothers and fathers on child rearing practices and their relation to child aggression. Child Develpm., 1961, 32:457-472.
- ERON, L. D., LAULICHT, J. H., WALDER, L. O.
Psychosocial development of aggressive behavior. Proc. Rip Van Winkle Clin., 1956, 7:3-23.
- ERON, L. D., LAULICHT, J. H., WALDER, L. O., FARBER, I. E., & SPIEGEL, J. P.
Application of role and learning theories to the study of the development of aggression in children. Psychol. Rep., 1961, 9:291-334.
- ERON, L. D., WALDER, L. O., TOIGO, R., & LEFKOWITZ, M.
Social class, parental punishment for aggression, and child aggression. Child Develpm., 1963, 34:849-867.
- ESKIN, L. D.
A study of some possible connections between criminal behavior and perceptual behavior. Dis. Abstr. 1961, 27:3163-3164.
- ESTES, W. K.
An experimental study of punishment. Psychol. Monogr., 1944, 57, No. 263.
- EUZIERE, J., LAFON, R., & FAURE, J. L.
Aggressive behavior in young girls and adolescents. Pediatric Pratique, 1950, 39:307-341.

"P"

- FAIRBAIRN, W. R. D.
Is aggression an irreducible factor? Brit. J. Med. Psychol., 1940, 18:163-170.
- FALK, G. J.
The role of social class differences and horizontal mobility in the etiology of aggression. J. educ. Sociol., 1959, 33:1-10.
- FALK, G. J.
Status differences and the frustration-aggression hypothesis. Int. J. soc. Psychiat., 1959, 5:214-222.
- FAURE, J.
Aggression as psychosomatic disorder. J. med. Bordeaux, 1949, 126:465-468.
- FELDMAN, DOROTHY A., PASCAL, G. R., & SWENSEN, C. H.
Direction of aggression as a prognostic variable in mental illness. J. consult. Psychol., 1954, 18:167-170.
- FELDMAN, M. J. & SIEGEL, S. M.
The effect on self description of combining anxiety and hostility items on a single scale. J. clin. Psychol., 1958, 14:74-77.
- FERGUSON, D. C. & BUSS, A. H.
Operant conditioning of hostile verbs in relation to experimenter and subject characteristics. J. consult. Psychol., 1960, 24.
- FERGUSON, R. G.
Some developmental factors in childhood aggression. J. educ. Res., 1954, 48:15-27.
- FERRACUTI, F. & WOLFGANG, M. E.
Design for a proposed study of violence. Brit. J. Crim., April, 1963, 377-388.
- FERREIRA, A. J.
The double-bind and delinquent behavior. Arch. Gen. Psychiat., 1960, 3:359-367.
- FERSON, JEAN E.
The displacement of hostility. Unpublished doctor's dissertation, Univ. of Texas, 1958.
- FESHBACH, S.
The drive-reducing function of fantasy behavior. J. abnorm. soc. Psychol., 1955, 50:3-11.
- FESHBACH, S.
The catharsis hypothesis and some consequences of interaction with aggressive and neutral play objects. J. Pers., 1956, 24:449-462.

- FESHBACH, S.
The stimulating versus cathartic effects of a vicarious aggressive activity. J. abnorm. soc. Psychol., 1961, 63:381-385.
- FESHBACH, S. & SINGER, R.
The effects of fear and arousal and suppression of fear upon social perception. J. abnorm. soc. Psychol., 1957, 55:283-388.
- FESHBACH, S. & SINGER, R.
The effects of personal and shared threats upon social prejudice. J. abnorm. soc. Psychol., 1957, 54:411-416.
- FESHBACH, S., SONGER, R. D., & FESHBACH, NORMA
Effects of anger arousal & similarity upon the attribution of hostility to pictorial stimuli. J. consult. Psychol., 1963, 27:248-252.
- FESTINGER, L. & ARONSON, E.
The arousal and reduction of dissonance in social contexts. In D. Cartwright & A. Zander (Eds.), Group Dynamics (2 ed.), Evanston, Illinois: Row, Peterson, 1960.
- FESTINGER, L., GERARD, H., HYMOVITCH, B., KELLY, H., & RAVAN, B.
The influence process in the presence of extreme deviates. Hum. Relat., 1952, 5:327-346.
- FESTINGER, L., PEPITONE, A., & NEWCOMB, T. M.
Some consequences of deindividuation in a group. J. abnorm. soc. Psychol., 1952, 47:382-389.
- FINKELSTEIN, B. A.
The management of homicidal tendencies. Arch. Crim. Psychodyn., Spring, 1959, 3:339-348.
- FINNEY, B. C.
Instructions for the use of the Palo Alto aggressive content scale, Palo Alto, California: V.A. Hosp., 1951.
- FINNEY, B. C.
Rorschach test correlates of assaultive behavior. J. proj. Tech., 1955, 19:6-17.
- FISHER, M. G.
The prediction of assaultiveness in hospitalized mental patients. Unpublished doctor's dissertation, Pennsylvania State Univ., 1956.
- FISHER, S.
Hostility and perception of the horizontal. Percept. Mot. Skills, 1960, 11:28.
- FISHER, S. & HINDS, EDITH
The organization of hostility controls in various personality structures. Genet. Psychol. Monogr., 1951, 44:3-68.
- FISKE, C. E. & OBERMAYER, M. E.
Personality and emotional factors in chronic neurodermatitis. Arch. Derm. & Syph., 1954, 70:261-268.
- FITCH, J. H.
Two personality variables and their distribution in a criminal population: An empirical study. Brit. J. soc. clin. Psychol., 1962, 1:161-167.
- FITCH, J. H.
Men convicted of sexual offences against children. Brit. J. Crim., 1962, 18-37.
- FLANAGAN, J. C. & SCHMID, F. W.
The critical incident approach to the study of psychopathology. J. clin. Psychol., 1959, 15:136-139.
- FOLKARD, S.
Aggressive behavior in relation to open wards in a mental hospital. Ment. Hyg., 1960, 44:155-161.
- FOREMAN, M. E.
Predicting behavioral problems among institutionalized mental retardates. Amer. J. ment. Def., 1962, 66:580-588.
- FOULDS, G.
Frustration types among mental defective juvenile delinquents. Brit. J. Psychiat., September, 1945, 36:29-32, Biblio. (5 items). Study of 45 juvenile delinquents.
- FOULDS, G. A.
Attitudes toward self and others of psychopaths. J. ind. Psychol., 1960, 16:81-83.
- FOULDS, G. A., CAINE, T. M., & CREASY, M. A.
Aspects of extra & intro-punitive expression in mental illness. J. ment. Sci., 1960, 106:599-610.
- FOULDS, G. A. & OWEN, ANNA
Are paranoids schizophrenics? Brit. J. Psychiat., 1963, 109:462.
- FOX, V.
Violence Behind Bars. New York: Vantage Press, 1956, 365 F761.
- FOX, V.
Emotional dynamics in group violence. Arch. crim. Psychodyn., 1957, 2:255-277.
- FOX, V.
Emotional impaction in modern man. Excerpta Criminologica, Vol. 1, No. 3, May-June, 1961.
- FOX, A. N.
Post-homicidal contritions and religious conversion. Psychiat. Quart. (New York State), October, 1943, 17:565-578.
- FRANKEL, E.
One thousand murders. J. crim. Law Criminol. & Police Sci., January-February, 1939, 29:672-688. Study of 1816 homicide cases reported to New Jersey Health Authorities, during 1925-1934.

- FREDERICSON, E.
The effects of food deprivation upon competitive and spontaneous combat in C57 Black Mice. J. Psychol., 1950, 29:89-100.
- FREDERICSON, E.
Distributed versus massed experience in a traumatic situation. J. abnorm. soc. Psychol., 1950, 45:2.
- FREDERICSON, E.
Time and aggression. Psychol. Rev., 1951, 58:1.
- FREDERICSON, E.
Competition: The effects of infantile experience upon adult behavior. J. abnorm. soc. Psychol., 1951, 46:3.
- FREDERICSON, E.
Perceptual homeostasis and distress in vocalization in puppies. J. Pers., 1952, 20:4.
- FREDERICSON, E.
Aggressiveness in female mice. J. comp. physiol. Psychol., 1952, 45:254-257.
- FREDERICSON, E.
Reciprocal fostering of two inbred mouse strains and its effect on the modification of inherited aggressive behavior. Amer. Psychol., 1952, 7:241-242.
- FREDERICSON, E. & BIRNBAUM, ANN E.
Competitive fighting between mice with different hereditary backgrounds. J. gen. Psychol., 1954, 85:271-280.
- FREDERICSON, E., FINK, C. D., & PARKER, JEAN R.
Elicitation and inhibition of competitive fighting in food deprived mice. J. gen. Psychol., 1955, 86:131-141.
- FREDERICSON, E., GURNEY, NANCY, & DUBOIS, EDNA
The relationship between environmental temperature and behavior in neonatal puppies. J. compar. physiol. Psychol., 1956, 49:3.
- FREDERICSON, E., STORY, A. W., GURNEY, NANCY, & BUTTERWORTH, K.
The relationship between heredity, sex, and aggression in two inbred mouse strains. J. gen. Psychol., 1955, 87:121-130.
- FREDERIKSON, N.
The effects of frustration on negativistic behavior of young children. J. genet. Psychol., 1942, 61:203-226.
- FREEDMAN, L. Z.
Sexual aggressive and acquisitive deviates. J. nerv. ment. Dis., 1961, 132:44-49.
- FREEDMAN, L. Z.
Sexual, aggressive and anxious behavior in the lab macaque. J. nerv. ment. Dis., 1962.

- FREEMAN, EDITH M. H.
Effects of aggression expression after frustration on performance: A test of the catharsis hypothesis. Dis. Abstr., 1963, 23:1073.
- FREEMAN, L.
Before I Kill More. New York: Crown Publ., 1955. Analysis of emotional and moral development of William Heirens, murderer in Chicago in 1945.
- FRENCH, J. P. R., JR.
Organized and unorganized groups under fear and frustration. In K. Lewin et al. Authority and frustration. Univ. Ia. Stud. Child Welf., 1944.
- FREUD, A.
Aggression. Bull. Menninger Clin., 1949, 13:143-151.
- FRIED, EDRETA
Ego-strengthening aspects of hostility. Amer. J. Orthopsychiat., 1956, 26:1.
- FRIEDMAN, A. S. & GRANICK, S.
A note on anger and aggression in old age. J. Geront., 1963, 18:283-285.
- FUANDIS, L. M. & LAMBERT, W. W.
Sources of frustration and targets of aggression: "A cross cultural study." J. abnorm. soc. Psychol., 1961, 62:640-648.
- FUNKENSTEIN, D. H., KING, S. H., & DROMETTE, N.
The direction of anger during a laboratory stress-inducing situation. Psychosom. Med., 1954, 16:404.

- GALVIN, J. A. V. & MACDONALD, J. M.
Psychiatric study of a mass murderer. Amer. J. Psychiat., June, 1959, 115:1057-1061. Denver man placed a time bomb in an airplane to kill his mother.
- GARAMA, A.
Oral super ego aggressions and actual conflicts in peptic ulcer patients. Int. J. Psychoanal., 1957, 38:73-81.
- GARAMA, A.
The curative factors in psychoanalysis: Contributions to discussion. Int. J. Psychoanal., 1962, 43:221-224.
- GARDNER, G. E.
The community and the aggressive child. Ment. Hyg., 1949, 33:537-550.
- GARDNER, G. E.
The community and the aggressive child: The aggressive - destructive impulses in the sex offender. Ment. Hyg., 1950, 34:44-63.
- GARFINKEL, H.
Research notes on inter and intra-racial homicides. Soc. Forces, May, 1949, 27:369-381. Study of 673 homicides involving 821 offenders based on death certificates and Superior Court records of 10 North Carolina counties, 1930-1940.
- GATLING, F. P.
Frustration reactions of delinquents using Rosenzweig's classification system. J. abnorm. soc. Psychol., 1950, 45:749-752.
- GEER, J. H.
The effect of direction of generalization and amplitude of response on stimulus generalization with aggressive stimulus. Unpublished master's thesis, Univ. of Pittsburg, 1960.
- GEER, J. H. & BUSS, A. H.
Supplementary report: Generalization of a nonverbal response to aggressive verbal stimuli. J. exp. Psychol., 1962, 63:413-414.
- GELLERMAN, S.
The effects of experimentally induced aggression and inhibition on word-association response sequences. Unpublished doctor's dissertation, Univ. of Pennsylvania, 1956.
- GERNERT, P. J.
The dangerous offender. Penn. Chiefs of Police Assn. Bull., Fall 1959, 20:28-29. Based on address at National Institute on Crime and Delinquency, May 31 - June 3, 1959.
- GERO, G.
Sadism, masochism, and aggression -- their role in symptom formation. Psychoanal. Quart., 1962, 31:31-42.
- GIBBENS, T. C. N.
Sane and insane homicide. J. crim. Law Criminol. & Police Sci., July-August 1958, 49:110-115. Bases on records of 120 persons convicted of murder or manslaughter in 1947-1949, and 115 persons guilty of homicide who were admitted to New Jersey State Hospital before 1950.

GIBSON, EVELYN & KLEIN, S.

Murder. Studies in the causes of delinquency and the treatment of offenders, No. 4, Her Majesty's Stationery Office, 1961, Great Britain, Home Office, Research Unit.

GIBSON, R.

Incidence and pattern of crime among mental defectives. Ment. Hyg. (New York), July, 1957, 41:404-407.

GIFFIN, MARY E., JOHNSON, A. M., & LITIN, E. M.

Specific factors determining anti-social acting out. Amer. J. Orthopsychiat., 1954, 24:668-684.

GILBERT, M. M. & MARADIE, L. J.

The incidence of psychopathy in a group of prisoners referred for psychiatric evaluation. Arch. Crim. Psychodyn., Spring 1961, 4:481-488. Prisoners arrested for misdemeanors in Miami during 1957-1958, examined by Rorschach test and W-B intelligence test.

GILL, W. S.

Critique and notes: Interpersonal affect and conformity behavior in schizophrenics. J. abnorm. soc. Psychol., 1963, 67:501-505.

GILLESPIE, J.

Aggression in relation to frustration, attack, and inhibition. Dis. Abstr., 1962, 22:4080-4081.

GILLIN, J. L.

Murder as a sociological phenomenon. Ann. Amer. Acad. Polit. Soc. Sci., November, 1952, 284:20-25. Study began in 1930 of distinguishing features of 92 murders at Wisconsin State Prison.

GILLIN, J. L.

Sex offenders and murderers. Soc. Forces, December, 1953, 14:232.

GLESER, G. C., GOTTSCHALK, L. A., & SPRINGER, K. J.

A scale for hostility outwards applicable to verbal samples, presented at annual meeting of Amer. Psychologic Assoc., St. Louis, 1962.

GLUCK, M. R.

The relationship between hostility in the TAT and behavioral hostility. J. proj. Tech., 1955, 19:21-26.

GLUCK, M. R.

Rorschach content and hostile behavior. J. consult. Psychol., 1955, 19:475-478.

GLUECK, S. & GLUECK, ELEANOR

Unraveling Juvenile Delinquency. New York: Commonwealth Fund, 1950.

GLUECK, S. & GLUECK, ELEANOR

Predicting Delinquency and Crime. Cambridge, Mass.: Harvard, 1959.

GOFSTEIN, A. G.

Hostile drive, conflict and the recall of hostile material. Unpublished doctor's dissertation, Boston Univ., 1956.

GOITEIN, P. L.

Mind of murder. J. Crim. Psychopath., April, 1942, 3:625-647. Case report of 28 year old woman.

GOLD, M.

Suicide, homicide, and the socialization of aggression. Amer. J. Sociol., 1958, 63:651-661.

GOLDBERG, F. H.

The effect of an undetected aggressive stimulus upon characteristic modes of responding to aggressive and non-aggressive pictures. Dis. Abstr., 1963, 62:5364.

GOLDENBERG, M., PINES, K. L., BALDWIN, ELEANA, GREEN, D. G., & ROH, C. E.

The hemodynamic response of man to norepinephrine and epinephrine and its relation to the problem of hypertension. Amer. J. Med., 1948, 5:792.

GOLDSTEIN, A.

Aggression and hostility in the elementary school in low socioeconomic areas. Understanding the Child, 1955, 24:20.

GONZER, V. V. & SURASON, I. G.

Interrelationships among hostility, experimental conditions, and verbal behavior. J. abnorm. soc. Psychol., 1964, 68:79-84.

GOODENOUGH, FLORENCE L.

Anger in young children. Inst. Child Welf. Monogr., Ser. No. 9, Minneapolis: Univ. of Minneapolis Press, 1931.

GOODRICH, D. C.

Some manifestations of aggression in authoritarian and equalitarian discussion groups. Unpublished doctor's dissertation, Univ. of Rochester, 1953.

GOODRICH, D. W. & BOOMER, D. S.

Some concepts about therapeutic interventions with hyperaggressive children. Social Casework, 1958, 29:107-213 & 286-291.

GOODSTEIN, L.

Interrelationships among several measures of anxiety and hostility. J. consult. Psychol., 1954, 18:35-39.

GORDON, J. E.

Effect of fantasy arousal of affiliation drive on doll play aggression. J. abnorm. soc. Psychol., 1963, 66:301-307.

GORDON, J. E. & COHN, FAY

The effects of affiliation drive arousal on aggression in doll interviews. Unpublished experiment, 1961.

GORLOW, L., FIMET, C. N., & FINE, H. J.

The validity of anxiety and hostility Rorschach content scores among adolescents. J. consult. Psychol., 1952, 16:73-75.

GOTTSCHALK, L. A., GLESER, GOLDINE C., & SPRINGER, KAYLA J.

Three hostility scales applicable to verbal samples. Arch. Gen. Psychiat., 1963, 9:254-279.

GOTTSCHALK, L. A., KAPLAN, S. M., GLEESER, GOLDINE C., & WINET, CAROLYN M.
Variations in magnitude of emotion: A method applied to anxiety and hostility during phases of the menstrual cycle. Psychosom. Med., 1962, 24:300-310.

GRACE, W. J. & GRAHAM, D. T.
Relationship of specific attitudes and emotions to certain bodily diseases. Psychosom. Med., 1952, 14:242-251.

GRAHAM, D., GRAHAM, FRANCES K., & KABLER, J. D.
Experimental production of predicted physiological differences by suggestion of attitude. Paper presented at American Psychosomatic Society meetings, 1960.

GRAHAM, F. K., CHARWAT, W. A., HONIG, ALICE S., & WELTZ, P. C.
Aggression as a function of the attack and the attacker. J. abnorm. soc. Psychol., 1951, 46:512-520.

GRAYSON, H. M. & TOLMAN, RUTH S.
A semantic study of concepts of clinical psychologists and psychiatrists. J. abnorm. soc. Psychol., 1950, 45:216-231.

GREEN, J. B.
Association of behavior disorders with electroencephalographic focus in children without seizures. Neurology, 1961, 11:337.

GREENACRE, PHYLLIS
Problems of acting out in the transference relationship. J. Amer. acad. child Psychiat., 1963, 2:1.

GREENBERG, H. P.
Crime and folie a deux: Review and case history. J. Ment. Sci., 102:772-779. Case of son and father involved in murder of the wife and mother.

GREENBLATT, M.
Physiological correlates of tension and antagonism during psychotherapy. Psychosom. Med., 1957, 19:99-104.

GREENBLATT, M.
Discussion of papers by Saslow and Matarazzo, and Lacey Research in Psychotherapy (proceedings of a conference). Amer. Psychol. Assoc., 1959.

GREENE, J. E.
Motivations of a murderer. J. abnorm. soc. Psychol., 1948, 43:526-531.

GRESSEL, G. C., SHOE, F. O., SASLOW, G., DUBOIS, P., & SCHROEDER, H. A.
Personality factors in arterial hypertension. J. A. M. A., 1949, 140:265-272.

GREWEL, F.
Aggression and aggressive character. Neder. Tydschr. Psycho. Grenagebieden (Amsterdam), 1950, 5:39-76.

GROSS, M. D. & WILSON, W. C.
Behavior disorders of children with cerebral dysrhythmias. Gen. Psychiat., 1964, 6:610-619.

GROWDON, C. H.
Some observations on juvenile homicide. Quart. Bull. Managing Officers Assoc. (Ohio), June, 1941, 18:5-15, Ohio, Department of Public Welfare, State Bureau of Juvenile Research. Study of 61 cases.

GROWDON, C.H.
A Group Study of Juvenile Homicide. Columbus: October, 1949, Data on 54 unselected cases of juvenile homicide during 1921-1947.

GUERVICH, B. K.
Cybernetics and certain modern problems of physiology of the nervous system. J. nerv. ment. Dis., 1959, 128:169.

GURVITZ, M.
Developments in the concept of psychopathic personality (1900-1950). Brit. J. Delin., October, 1951, 2:88-102, Biblio. (7 items).

GUSTAFSON, J. E. & WINODUR, G.
The effect of sexual satiation and female hormone aggressivity in an inbred mouse strain. J. Neurophys., 1960, 1:182-184.

GUTIMACHER, M. S.
The Mind of the Murderer. New York: Farrer, Straus & Cudahy, 1960.

- HABERER, F. W.
Juvenile Homicides in Wayne County (Mich.). Thesis (M.A.), Wayne State University, 1960.
- HAFNER, A. J. & KAPLAN, A.M.
Hostility content analysis of the Rorschach and TAT.
J. proj. Tech., 1960, 24:137-143.
- HAINES, W. H. & ESSAR, A.
Case history of Ruth Steinhagen. Amer. J. Psychiat., April, 1950, 106:737-743.
- HALEVY, A., MOOS, R. H., & SOLOMON, G. F.
The relationship between blood serotonin concentrations and behavior in psychiatric patients. Unpub. ms.
- HALL, C.
A manual for classifying aggressions, misfortunes, friendly acts, and good fortune in dreams. Institute Dream Research, IDR Tech. Manual, No. 2, 1962.
- HALL, C. S. & KLEIN, S. J.
Individual differences in aggressiveness in rats. J. comp. Psychol., 1942, 33:371-383.
- HAMBLIN, R. L., BRIDGLER, D. A., DAY, R. C., & LANCY, W. L.
The interference-aggression law? Sociometry, 1963, 26:190-216.
- HAMBLING, J.
Emotions and symptoms in essential hypertension. Brit. J. Med. Psychol., 1951, 24:242-253.
- HAMBLING, J.
Psychosomatic aspects of arterial hypertension. Brit. J. Med. Psychol., 1952, 25:39-47.
- HANER, C. F. & BROWN, P. A.
Clarification of the instigation to action concept in the frustration-aggression hypothesis. J. abnorm. soc. Psychol., 1955, 51:204-206.
- HANSON, D. A., TURQUET, P. M., & HARDING, D. W.
Aggression in nature and society. Brit. J. Med. Psychol., 1949, 22:161.
- HARDYCK, C., SINGER, MARGARET T., & HARRIS, R. E.
Transient changes in affect and blood pressure. J. gen. Psychiat., 1962, 7:15-20.
- HARLEY, E. R.
The perception of threat: distorted reality triggers homicide.
J. soc. Ther., 1959, 5:1.
- HARLIN, H.
Five hundred homicides. J. crim. Law Criminol. & Police Sci., March-April, 1950, 40:736-756. Data from the Files of Coroner of Jefferson County, Alabama, 1937-1944. An attempt to discover a pattern in this type of personal violence with special attention to similarities between races and sex categories.

- HARRIS, I.
Mood, anger, and somatic disfunction. J. nerv. ment. Dis., 1951, 113:152-158.
- HARRIS, R. K., SOKOLOW, M., CARPENTER, L. G., FREEDMAN, M., & HUNT, S. P.
Response to psychological stress in persons who are potentially hypertensive. Circulation, 1953, 7:874-879.
- HARTLEY, EUGENE R.
The perception of threat. In "Motivation for murder; a forum sponsored by the Institute for Forensic research and the Metropolitan Law Enforcement Conference." J. Soc. Ther., First Quarter, 1959, 5:43-75.
- HARTMANN, H., KRIS, E., & LOWENSTEIN, R. M.
Notes on the theory of aggression. Psychoanalytic Study of the Child, 1949, Vols. 3-4, New York: International Universities Press.
- HARTUP, W. W. & HIMENO, Y.
Social isolation versus interaction with adults in relation to aggression in pre-school children. J. abnorm. soc. Psychol., 1959, 59:17-22.
- HARVEY, O. J. & CONSALVI, C.
Status and conformity to pressures in informal groups. J. abnorm. soc. Psychol., 1960, 60:182-187.
- HASKELL, R. J.
Relation between aggressive behavior and psychological tests. J. proj. Tech., 1961, 62:431-440.
- HASKIN, P. R.
A study of the relationship between realistic and unrealistic aggression, reliance on categorical attitudes, and constructiveness of adjustment. Unpublished doctor's dissertation, Western Reserve Univ., 1958.
- HAWARD, L. R. C.
The effect of clorpromazine on verbal aggression. Indian J. physiol. Pharmacol., 1938, 2:367-373.
- HENRIKSON, L. V.
Risk taking and the behavior disorders. J. corr. psych. & soc. Ther., 1962, 8:133.
- HENRY, A. F. & SHORT, J. F., JR.
Suicide and Homicide, New York: Free Press, 1954.
- HENTIG, H.
Pre-murderous kindness and post-murder grief. J. crim. Law Criminol. & Police Sci., November-December, 1957, 48:269-277.
- HERREN, R.
Some remarks on husband and wife killing. Int. Crim. Police Rev., (131) October, 1959, 244-250, Biblio. (20 items).
- HERZOG, ELIZABETH
Identifying Potential Delinquents, Washington: GPO, 1960.
- HESS, W. R. & AKERT, K.
Experimental data on role of hypothalamus in mechanisms of emotional behavior. Arch. Neurol. Psychiat., 1939, 42:979-1000.
- HEWITT, L. E. & JENKINS, R. L.
Fundamental Patterns of Maladjustment: The Dynamics of Their Origin. Springfield, Illinois: Green, 1946.
- HEYMANN, G. M.
Some relationships among hostility, fantasy aggression and aggressive behavior. Amer. Psychol., 1956, 11:391.
- HILGARD, JOSEPHINE R.
Sibling rivalry and social heredity. Psychiatry, 1951, 14:375-385.
- HILL, D. B. & POND, D. A.
Reflections on one hundred capital cases submitted to electroencephalography. J. ment. Sci., 1952, 98:23-43.
- HILL, G. & ARMITAGE, S. G.
An analysis of combined therapy--individual and group--in patients with schizoid, obsessive compulsive, or aggressive defenses. J. nerv. ment. Dis., 1954, 120:102-103.
- HILLSON, J. S. & WORCHEL, P.
Self concept and defensive behavior in the maladjusted. J. consult. Psychol., 1957, 21:1.
- HIMMELWEIT, HILDE T., OPPENHEIM, A. N., & VINCE, PAMELA
Television and the Child. London: Oxford, 1958.
- HINSEY, C., PATTERSON, G. R., & SONODA, BEVERLY
Validation of a procedure for conditioning aggression in children. Paper read at Western Psychol. Assoc., Seattle, June, 1961.
- HINSIE, L. E.
A contribution to the psychopathology of murder--study of a case. J. Crim. Psychopath., July, 1940, 2:1-20.
- HITSCHMAN, E.
The history of the aggressive impulse. Yearbook of Psychoanalysis, 1948, 4:70-74.
- HODGE, J. R.
Passive-dependent versus passive-aggressive personality. U. S. Armed Forces Med. J., 1955, 6:84-90.
- HOFFER, WILLI
Oral aggressiveness and ego development. Int. J. Psychoanal., 1950, 31.
- HOFFMAN, L. W., ROSEN, S., & LIPPIT, R.
Parental coörciveness, child autonomy, and child's role at school. Sociometry, 1960, 23:15-22.
- HOKANSON, J. E.
Behavioral and psychological concomitants of frustration. Unpublished doctor's dissertation, Univ. of Wisconsin, 1959.

HOKANSON, J. E.
The effects of frustration and anxiety on overt aggression. J. abnorm. soc. Psychol., 1961, 62:346-351.

HOKANSON, J. E.
Vascular and psychogalvanic effects of experimentally aroused anger. J. Pers., 1961, 29:30-39.

HOKANSON, J. E.
The effects of guilt arousal and severity of discipline on adult aggressive behavior. J. clin. Psychol., 1961, 17:29-32.

HOKANSON, J. E. & BURGESS, M.
The effects of status, type of frustration, and aggression on vascular processes. J. abnorm. soc. Psychol., 1962, 65.

HOKANSON, J. E. & BURGESS, M.
The effects of three types of aggression on vascular processes. J. abnorm. soc. Psychol., 1962, 64.

HOKANSON, J. E., BURGESS, M., & COHEN, M. F.
Effects of displaced aggression on systolic blood pressure. J. abnorm. soc. Psychol., 1963, 67:214-218.

HOKANSON, J. E. & GORDON, J. E.
The expression and inhibition of hostility in imaginative and overt behavior. J. abnorm. soc. Psychol., 1958, 57:327-333.

HOKANSON, J. E. & SHETLER, S.
The effect of overt aggression on physiological tension level. J. abnorm. soc. Psychol., 1961, 63:446-448.

HOLBERG, J. D., BURSTEN, B., & SANTICCIOLI, A.
The reporting of aggression as an indication of aggressive tension. J. abnorm. soc. Psychol., 1955, 50:13-18.

HOLLENBERG, ELEANOR & SPERRY, MARGARET
Some antecedents of aggression and effects of frustration in doll play. Pers., 1951, 1:32-43.

HOLMES, D. S.
An experimental study of catharsis and guilt in aggressive behavior. Dis. Abstr., 1963, 24:2557.

HOLMES, D. S. & BERKOWITZ, L.
Some contrast effects in social perception. J. abnorm. soc. Psychol., 1961, 62:150-152.

HOLIZMAN, W. H.
Validation studies of the Rorschach Test: impulsiveness in the normal superior adult. J. clin. Psychol., 1950, 6:348-351.

HOLZBERG, J. D., BURSTEN, B., & SANTICCIOLI, A.
The reporting of aggression as an indication of aggressive tension. J. abnorm. soc. Psychol., 1955, 50:12-18.

HOLZBERG, J. D. & HAHN, F.
The picture-frustration technique as a measure of hostility and guilt reaction in adolescent psychopaths. Amer. J. Orthopsychiat., 1952, 22:776-795.

HOLZBERG, J. D. & POSNER, R.
The relationship of extra-punitiveness on the Rosenzweig P-F study to aggression in overt behavior and fantasy. Amer. J. Orthopsychiat., 1951, 21:767-769.

HOPE, K.
The structure and measurement of hostility. Unpub. ms.

HOPPE, K. D.
Persecution, aggression, and depression. Psyche (Heidelberg), 1962, 16:521-537.

HOPS, H. & WALTERS, R. H.
Studies of reinforcement of aggression: II. Effects of emotionally-arousing antecedent conditions. Child Develpm., 1963, 34:553-562.

HORNBERGER, R.
The differential reduction of aggressive responses as a function of interpolated activities. Paper read at American Psychological Assn. meetings, 1959.

HORNEY, KAREN
Our Inner Conflicts. New York, Norton, 1955.

HOROWITZ, E. L. & HOROWITZ, RUTH E.
Development of social attitudes in children. Sociometry, 1937, 1:301-338.

HORWITZ, M., GOLDMAN, M., & LEE, F. J.
Effects of two methods of changing a frustrating agent on reduction of hostility. ONR Technical Report, 1954, U. of Ill., Bureau of Educ. Res.

HOVLAND, C., HARVEY, O., & SHERIF, M.
Assimilation and contrast effects in reactions to communication and attitude change. J. abnorm. soc. Psychol., 1957, 55:244-252.

HOVLAND, G. I. & SEARS, R. R.
Minor studies in aggression: VI. Correlation lynchings and economic indices. J. Psychol., 1950, 9:301-310.

HOWES, D. H. & SOLOMON, R. L. A.
A note on McGinnies' "Emotionality and perceptual defense." Psychol. Rev., 1950, 57:229-234.

HUBBELL, ANNE B.
Social origins of control of aggression. Dis. Abstr., 1963, 23:367.

HURLEY, J. R.
The Iowa picture interpretation test: A multiple choice version of the TAT. J. consult. Psychol., 1955, 19:372-376.

HUSMAN, B. F.
Aggression in boxers and wrestlers as measured by projective techniques. Res. quart. Amer. Assn. hlth. phys. Educ., 1955, 26:421-425.

"I"

INGRAM, WINIFRED

Prediction of aggression from the Rorschach. J. consult. Psychol., 1954, 18:23-28.

INNES, G., MILLAR, W. M., & VALENTINE, M.

Emotions and blood pressure. J. ment. Sci., 1959, 105:840.

INWOOD, E. R.

Therapeutic interviewing of hostile relatives. Amer. J. Psychiat., 1952, 109:455-458.

"J"

JACKMAN, N. R.

Survival in a concentration camp. Human Organization, 1959, 17:23-26.

JACKSON, LYDIA

Aggression and Its Interpretation. London, Methuen & Co. Ltd., 1954, 136.7, J13.

JAMES, W.

The moral equivalent of war. In Memoirs and Studies, London: Longmans, 1917.

JANIS, I. L.

Air War and Emotional Stress: Psychological Studies of Bombing and Civilian Defense. New York: McGraw-Hill, 1951.

JANIS, I. L.

Psychological Stress: Psychoanalytic and Behavioral Studies of Surgical Patients. New York: Wiley, 1958.

JANIS, I. L. & FESBACH, S.

Effects of fear-arousing communications. J. abnorm. soc. Psychol., 1953, 48:78-92.

JANIS, I. L. & KATZ, D.

The reduction of intergroup hostility; research problems and hypothesis. Conflict Resolution, 1959, 3:85-100.

JEGARD, SUZANNE & WALTERS, R. H.

A study of some determinants of aggression in young children. Child Developm., 1960, 31:739-747.

JENKINS, R. L.

Motivation and frustration in delinquency. Amer. J. Orthopsychiat., 1957, 27:528-537.

JENSEN, A. R.

Aggression in fantasy and overt behavior. Psychol. Monogr., 1957, 71, No. 45.

JERSILD, A. T. & MARKEY, F. V.

Conflicts between preschool children. Child Developm. Monogr., 1935, No. 21.

JOHNSON, A. G.

Some etiological aspects of repression, guilt, and hostility. Psychoanal. Quart., 1951, 20:511-527.

JOHNSON, A. M. & SZUREK, S. A.

The genesis of anti-social acting out in children and adults. Psychoanal. Quart., 1952, 21:323-343.

- JOHNSON, A. M. & SZUREK, S. A.
Etiology of anti-social behavior in delinquents and psychopaths.
J.A.M.A., 1954, 154:814-817.
- JOHNSON, W. R. & HUTTON, D. C.
Effects of combative sport upon personality dynamics as measured
by a projective test. Res. Quart. Amer. Assn. Hlth. Phys. Educ., 1955.
- JOHNSTON, R. A.
A methodological analysis of several revised forms of the Iowa picture
interpretation test. J. Pers., 1956, 25:283-389.
- JONES, E. E., HESTER, S. L., FARINA, A., & DAVIS, K. E.
Reactions to unfavorable personal evaluators' perceived adjustment.
J. abnorm. soc. Psychol., 1959, 59:363-370.
- JOSEPH, E. D.
Creation, fire, and oral aggression. Psychoanal. Quart.,
1960, 29:98-104.

"K"

- KAGAN, J.
The measurement of overt aggression from fantasy. J. abnorm. soc. Psychol., 1956, 52:390-393.
- KAGAN, J.
Socialization of aggression and the perception of parents in fantasy.
Child Develpm., 1958, 29, 311-320.
- KAHN, E.
Fear, hostility, reality. Amer. J. Psychiat., 1959, 115:1002-1005.
- KAHN, M. W.
The effect of severe defeat at various age levels on the aggressive
behavior of mice. J. genet. Psychol., 1951, 79:117-130.
- KAHN, M. W.
Infantile experience and mature aggressive behavior of mice: some
maternal influences. J. genet. Psychol., 1954, 84:65-75.
- KAHN, M. W.
A comparison of personality, intelligence, and social history of two
criminal groups. J. soc. Psychol., 1959, 49:33-40, Biblio. (7 items).
- KAHN, M. W.
A polygraph study of the catharsis of aggression. Unpublished doctor's
dissertation, Dept. of Soc. Relat., Harvard Univ., 1960.
- KAHN, M. W.
Psychological study test of a mass murderer. J. proj. Tech., June, 1960,
24:148-160, Biblio. (6 items). Denver man placed a time bomb in an air-
plane to kill his mother.
- KAHN, M. W.
The effect of socially learned aggression or submission on the mating
behavior of C57 mice. J. genet. Psychol., 1961, 98:211-217.
- KANE, P.
Availability of hostile fantasy related to overt behavior.
Unpublished doctor's dissertation, Univ. of Chicago, 1955.
- KANZER, M.
Panel report: Acting out and its relation to impulse disorders;
J. Amer. psychoanal. Assn., 1957, 5:136-145.
- KAPLAN, S. M., GOTTSCHALK, L. A., MAGLIOCCO, E. B., ROHOVIT, D. D., & ROSS, W. D.
Hostility in verbal productions and hypnotic dreams of hypertensive
patients. Psychosom. Med., 1961, 23:311-322.
- KARPMAN, B.
Felony assault revealed as a symptom of abnormal sexuality.
J. crim. Law Criminol. & Police Sci., 1946, 37:193-215.
- KARPMAN, B.
Aggression. Amer. J. Orthopsychiat., 1950, 20:694-718.

- KARFMAN, B.
A psychoanalytic study of a case of murder. Psychoanal. Rev., April-July, 1951, 38:139-157.
- KARFMAN, B.
A differential study of psychopathic behavior in infants and children. Amer. J. Orthopsychiat., 1952, 22:223-268.
- KARFMAN, B.
A paranoid murder. Arch. Crim. Psychodyn., Fall, 1955, 1:909-939.
- KARFMAN, B.
Dream life in a case of uxoricide. Arch. Crim. Psychodyn., Summer, 1957, 2:597-675.
- KARFMAN, B.
Uxoricide and infanticide in a setting of oedipal jealousy. Arch. Crim. Psychodyn., Winter, 1957, 2:109-141.
- KARR, M. L.
A study of adolescents who kill. Thesis (M. Soc. Sci.), Smith College, School of Social Work, 1941. Abstract: Smith College Studies in Social Work, December, 1941, 12:199-200. Study of 35 cases in Illinois during 1931-1941.
- KASHE, L. H. & KLEBANOFF, S. G.
The application of insight in its relation to mental health. Milit. Med., 1960, 125:112-115.
- KASWAN, J. W., WASMAN, M., & FREEDMAN, L. Z.
Aggression and the Picture-Frustration Study. J. consult. Psychol., 1960, 24:446-452.
- KAUFMANN, H. & FESHBACH, S.
The influence of anti-aggressive communications upon the response to provocation. J. Pers., 1963, 31:3.
- KAUFMANN, H. & FESHBACH, S.
Displaced aggression and its modification through exposure to anti-aggressive communication. J. abnorm. soc. Psychol., 1963, 67:79-82.
- KAUSCH, D. F.
Manifestation of aggression in children as a function of parent behavior. Dis. Abstr., 1963, 24:834-835.
- KEISTER, M. E. & UPDEGRAFF, R.
The behavior of young children in failure: An experimental attempt to discover and to modify undesirable responses of preschool children to failure. Univ. Ia. Stud. Child Welf., 1938, 14:27-82.
- KENNEDY, F. & OTHERS
A study of William Heirens. Amer. J. Psychiat., August, 1947, 104:113-121.
- KENNEDY, F. & OTHERS
Psychiatric study of William Heirens. J. crim. Law Criminol. & Police Sci., November-December, 1947, 38:311-341.

- KENNEDY, F.
Report on a murder (William Heirens). Arch. Neurol. Psychiat., (A.M.A.) November, 1948, 60:540-543.
- KENNY, D. T.
An experimental test of the catharsis theory of aggression. Ann Arbor: Univ. Microfilms, 1953.
- KEPECS, J. G., RUBIN, A., & RUBIN, M.
Atopic dermatitis: A clinical psychiatric study. Psychosom. Med., 1951, 13:1.
- KEPLER, HELEN
Distribution of aggressive and submissive behavior among 200 problem children. Smith Coll. Stud. Soc. Work, 1933-1934, 4:167-168.
- KING, S. H., & HENRY, A. F.
Aggression and cardiovascular reactions related to parental control over behavior. J. abnorm. soc. Psychol., 1955, 50:206-210.
- KITCHENER, H., SWEET, B., CITRIN, E.
Problems in the treatment of impulsive disorders in children in a residential setting. Psychiatry, 1961, 24:347-354.
- KLABER, M. M.
Manifestations of hostility in neuro-dermatitis. J. consult. Psychol., 1960, 2:116-120.
- KLEIN, M.
On Criminality. Brit. J. Med. Psychol., 1936, 312-315.
- KLETT, C. J.
Performance of high school students on the Edwards Personal Preference Schedule. J. consult. Psychol., 1957, 21:68-72.
- KLIENBERG, O.
Tensions affecting international understanding. SSRC Bull., 62, New York: Soc. Res. Council, 1950.
- KLINE, M. V.
The dynamics of hypnotically induced anti-social behavior. J. Psychol., 1958, 45:239.
- KNIGHT, W. R.
Early social experience, aggressive behavior, and social stress in laboratory rats. Dis. Abstr., 1962, 22:2479.
- KNIGHT, W. R., HOLTZ, J. R. & SPROGIS, G. R.
Acetophenazine and fighting behavior in mice. Science, 1963, 141:830-831.
- KOHN, M. L.
Social class and the exercise of parental authority. Amer. sociol. Rev., 1959, 24:353-366.
- KORNER, ANNLIESE
Some Aspects of Hostility in Young Children. New York: Grune and Stratton, 1949.

KREGARMAN, J. J. & WORCHEL, P.
Arbitrariness of frustration and aggression. J. abnorm. soc. Psychol.,
1961, 63:183-187.

KRIS, MARIANNE
Roots of hostility and prejudice. In Family in a Democratic Society,
New York: Columbia University Press, 1949.

KUETHA, J. L. & STRICKER, G.
Man and Woman: Social schemata of males and females. Psychol. Rep.,
1963, 13:655-661.

KUNDU, S. & MUKHERJEE, K.
Social behavior of prisoners. Indian J. Psychol., 1958, 33:269-273.

KURLAND, A. A., MORGENSTERN, J., & SHEETS, CAROLYN
A comparative study of wife murderers admitted to a state psychiatric
hospital. J. Soc. Ther., January, 1955, 1:7-15. Study of 12 men at
Spring Grove State Hospital, Md.

"L"

LAMBERT, W. W., TRIANDIS, L. M., & WOLF, MARGARET
Some correlates of beliefs in the malevolence and benevolence of
supernatural beings: A cross-societal study. J. abnorm. soc. Psychol., 1959, 58.

LAMBERTI, J. W. & OTHERS
The sudden murderer: A preliminary report. J. soc. Ther., First and
Second Quarter, 1958, 4:2-15, Biblio. (14 items). Clinical study of
11 men and 2 women at Malcolm Bliss Psychiatric Hospital, St. Louis, Mo.

LANE, R. E.
The fear of equality. Amer. pol. sci. Rev., 1959, 53:35-51.

LANGSAM, C. L. & MARKEY, O.
Psychiatric orientation in a Juvenile court setting.
Ohio State Med. J., 1954, 50:1.

LANGSTON, R. D.
Children's overt and fantasy aggression toward peers as a function of
perceived severity of parental punishment. Dis. Abstr., 1961, 21:2367.

LANSKY, L. M., CRANDELL, V. J., KAGAN, J., & BAKER, C. T.
Sex differences in aggression and its correlates in middle-class adolescents.
Child Develpm., 1961, 32:45-58.

LANTOS, B.
The two genetic derivations of aggression with reference to sublimation
and neutralization. Int. J. Psychoanal., 1958, 39:116-120.

LANZETTA, J. T.
Group behavior under stress. Hum. Relat., 1955, 8:29-52.

LANZKRON, J.
Murder as a reaction to paranoid delusions in involuntional psychosis and
its prevention. Amer. J. Psychiat., November, 1961, 118:426-427. Case
histories of 8 patients admitted to Matteawan State Hospital for Criminal
Insane, New York.

LARDER, D. L.
Effect of aggressive story content on nonverbal play behavior.
Psychol. Rep., 1962, 11:14-15.

LASKY, D. I.
The relationship between spontaneous fantasy, induced fantasy, and
behavioral measures of hostility. Dis. Abstr., 1962, 22:4408.

LATANE, B. & ARROWOOD, A. J.
Emotional arousal and task performance. J. appl. Psychol., 1963, 47:234-237.

LAUFER, M. W., DENHOFF, E., & SOLOMONS, C.
Hyperkinetic impulse disorders in children's behavior problems.
Psychosom. Med., 1957, 19:38.

- LAWES, L. E.
Meet the Murderer (2nd ed.). New York: Harper, 1940. Stories of murders in Sing Sing Prison, New York.
- LAWSON, R. & MARX, M. H.
Frustration: Theory and experiment. Genet. Psychol. Monogr., 1958, 57:393-464.
- LEARY, T.
How to change behavior. In G. Nielson (Ed.) Proceedings of the 14th International Congress of Applied Psychology. Clin. Psychol., Vol. 4.
- LEBO, D.
Aggressiveness and expansiveness in children. J. genet. Psychol., 1962, 100:227-240.
- LEBO, D. & LEBO, E.
Aggression and age in relation to verbal expression in non-directive play therapy. Psychol. Monogr., 1957, 71:20.
- LEE, F. J.
Frustration and hostility: The effects of differential reduction in power over decision-making. Unpublished doctor's dissertation, Boston Univ., 1955.
- LEHRMAN, P. F.
Some unconscious determinates in homicide. Psychiat. Quart., (New York State), October, 1939, 13:605-621, Biblio. (13 items). Discussion of 2 cases.
- LEIMAN, A. H. & EPSTEIN, S.
Thematic sexual responses as related to sexual drive and guilt. J. abnorm. soc. Psychol., 1961, 63:169-175.
- LEOPOLD, N. F.
Life Plus 99 Years. New York: Doubleday, 1958. Richard Loeb and Nathan Leopold kidnapped and murdered Bobby Franks.
- LESSER, G. S.
Maternal attitudes and practices and the aggressive behavior of children. Doctoral dissertation, Yale Univ., 1952. Published as The relationship between overt and fantasy aggression as a function of maternal response to aggression. J. abnorm. soc. Psychol., 1957, 55:215-221.
- LESSER, G. S.
Application of Guttman's scaling method to aggressive fantasy in children. Educ. psychol. Measmt., 1958, 18:543-551.
- LESSER, G. S.
Conflict analysis of fantasy aggression. J. Pers., 1958, 26:29-41.
- LESSER, G. S.
Extra punitiveness and ethnic attitude. J. abnorm. soc. Psychol., 1958, 56:281-282.
- LESSER, L. N.
An experimental investigation of the aggressiveness of children's behavior as a function of interpolated activities and individual differences in imaginative production. Dis. Abstr., 1963, 24:836-837.
- LEVIN, H. & SEAR, R. R.
Identification with parents as a determinant of doll-play aggression. Child Develpm., 1956, 27:135-153.
- LEVIN, H. & TURGEON, VALERIE F.
The influence of mothers' presense on children's doll-play aggression. J. abnorm. soc. Psychol., 1957, 55:304-308.
- LEVY, D. M.
Hostility patterns in sibling rivalry experiments. Amer. J. Orthopsychiat., 1936, 6:183-257.
- LEVY, D. M.
The hostile act. Psychol. Rev., 1941, 48:356-361.
- LEVY, J. & GRIGG, K. A.
Early memories: Thematic-configurational analysis. Arch. gen. Psychiat., 1962, 7:57-69.
- LINDESMITH, A. B. & DUNHAM, H. W.
Some principles of criminal typology. Soc. Forces, 1941, 19:307-314.
- LINDZEY, G.
An experimental examination of the scape-goat theory of prejudice. J. abnorm. soc. Psychol., 1950-1955, 296-309.
- LINDZEY, G. & RIECKEN, H. V.
Inducing frustration in adult subjects. J. consult. Psychol., 1951, 15:18-23.
- LIPPETT, R., POLANSKY, N., REDL, F., & ROSEN, S.
The dynamics of power. Hum. Relat., 1952, 5:37-64.
- LIPTON, H. R.
Psychiatric study of murderers. Amer. Correctional Assn. Proceedings, 1959, 89:104-111.
- LIVSON, N. & BRONSON, WANDA C.
An exploration of patterns of impulse control in early adolescents. Child Develpm., 1961, 32:75-88.
- LIVSON, N. & MUSSEN, P. H.
The relation of ego control to overt aggression and dependency. J. abnorm. soc. Psychol., 1957, 55:66-71.
- LLEWELLYN, L. G.
A comparison in interpersonal behavior in residential treatment: Hyperaggressive vs. normal children. Unpublished master's thesis, George Washington Univ., 1959.
- LERNER, GINA
Reinforcement of doll-play aggression in nursery school children. Unpublished ms., Univ. Oregon, 1961.
- LONDON, L. S.
Psychopathological aspects of murder. J. crim. Psychopath., April, 1944, 5:795-812. Discussion of 4 cases.
- LOVAAS, O. I.
Effect of exposure to symbolic aggression or aggressive behavior. Child Develpm., 1961, 32:37-44.

- LOVAAS, O. I.
Interaction between verbal and non-verbal behavior. Child Develpm.,
1961, 32:329-336.
- LUBIN, B.
Differentiation of overtly stable and unstable psychiatric aides by
means of the DAP test. Psychol. Rep., 1959, 5:26.
- LUBIN, B.
Some effects of set and stimulus properties on TAT stories.
J. proj. Tech., 1960, 24:11-16.
- LUBIN, B.
Judgements of adjustment from TAT stories as a function of experimentally
altered sets. J. consult. Psychol., 1961, 25:249-252.
- LUCAS, CAROL
Frustration and the perception of aggressive animals. J. consult.
Psychol., 1962, 26:287.
- LUNDY, R., KATKOVSKY, W., CROMWELL, R., & SHDEMAKER, D.
Self-acceptability and descriptions of sociometric choices.
J. abnorm. soc. Psychol., 1955, 51:260-262.
- LUNSKY, L. L.
Murderous "acting out" as a primitive defense to master anxiety.
Amer. J. Psychother., 1955, 9:262-268.
- LUSTMAN, S. L.
The headache as an internalized rage reaction. Psychiatry, 1951, 14:433-438.
- LYNN, ROSALIE
Personality characteristics of the mothers of aggressive and unaggressive
children. J. genet. Psychol., 1961, 99:159-164.

"M"

- MAC CASLAND, B. W.
The relation of aggressive fantasy to aggressive behavior in children.
Dis. Abstr., 1962, 22:1110.
- MAC COBY, E. E. & WILSON, W. C.
Identification and observational learning from films. J. abnorm.
soc. Psychol., 1957, 55:76-87.
- MAC DONALD, J. M.
The Murderer and His Victim. Springfield, Illinois: Charles C. Thomas, 1961.
- MAC DONALD, J. M.
The threat to kill. Amer. J. Psychiat., 1963, 120:125-130.
- MAC DONALD, M. W.
Criminally aggressive behavior in passive effeminate boys. Amer. J.
Orthopsychiat., January, 1938, 8:70-78. Social data and observations of
a group of eight boys in a psychiatric clinic and the Institute for
Juvenile Research.
- MACK, R. W. & SNYDER, R. C.
The analysis of social conflict--toward an overview and synthesis.
Conflict Resolution, 1957, 1:212-248.
- MADISON, P.
Hostility in neurotics and normals. J. abnorm. soc. Psychol.,
1955, 50:36-40.
- MAGAZINER, D.
The reduction of hostility without catharsis. Paper presented at
meeting of East. Psychol. Assn., Philadelphia, April, 1961.
- MAGAZINER, D.
The effects of insecurity upon aggressive responsiveness.
Dis. Abstr., 1961, 22:1255.
- MAIER, N. R. F.
Frustration. New York: McGraw-Hill, 1949.
- MALINOWSKI, B.
An anthropological analysis of war. Amer. J. Sociol., 1941, 521-550.
- MALLET, J. J.
Verbal recall of hostile and neutral thematic contents by schizophrenic
and normal subjects. Unpublished doctor's dissertation, Duke Univ., 1956.
- MANNE, S. H.
An investigation of the effects of group therapy on some personality
characteristics of adult male offenders. The effects of group therapy on
anxiety, impulse control, and overt behavior of adults legally classified
as defective delinquents. Dis. Abstr., 1962, 22:5342.
- MARGOLIN, J. B.
The effect of perceived cooperation or competition on the transfer of
hostility. Unpublished doctor's dissertation, New York Univ., 1954.

MC CORD, W. & MC CORD, JOAN
Origin of Crime. New York: Columbia, 1959.

MC CORD, W. & MC CORD, JOAN
Family interaction as antecedent to the direction of male aggressiveness.
J. abnorm. soc. Psychol., 1963, 66:239-242.

MC DERMAID, G. & WINKLER, E. G.
Psychiatric study of homicide cases. J. Clin. Psychopath., July, 1950,
11:93-146. Study of 27 prisoners in prison ward of Psychiatric Division
of Kings County Hospital, New York, 1947-1949.

MC DERMAID, G. & WINKLER, E. G.
Psychopathology of infanticide. J. Clin. Exptl. Psychopath.,
January-March, 1955, 16:22-41, Biblio. (16 items). Study of 12 cases
in Kings County Hospital, Brooklyn, 1947-1952.

MC DONOUGH, LEAH B.
A developmental study of motivation and reactions to frustration.
Unpublished doctor's dissertation, Michigan State Univ., 1958.

MC DONOUGH, T. B.
Inhibited aggression in essential hypertension. J. clin. Psychol.,
1964, 20:447.

MC GEE, SHANNA
Measurement of hostility: a pilot study. J. clin. Psychol.,
1954, 10:280-282.

MC GEORGE, J.
Alcohol and crime. Med. sci. Law, 1963, 3:27-48.

MC KEE, J. P. & LEAGER, FLORENCE B.
The relationship of socio-economic status and aggression to the competitive
behavior of preschool children. Child Developm., 1955, 26:135-142.

MC KELLAR, P.
The emotion of anger in the expression of human aggressiveness.
Brit. J. Psychol., 1959, 39:148-155.

MC NEIL, E. B.
Psychology and aggression. Conflict Resolution, 1959, 3:195-293.

MC NEIL, E. B.
Aggression in fantasy and behavior. J. consult. Psychol., 1962, 26:232-240.

MC NULTY, J. A. & WALTERS, R. H.
Emotional arousal, conflict, and susceptibility to social influence.
Canad. J. Psychol., 1962, 16:211-220.

MEALS, D. W. & SUMMERSKILL, J.
A technique for dealing with hostility in activity therapy.
J. clin. Psychol., 1952, 7:311-376.

MARKEY, O. B.
A study of aggressive sex misbehavior in adolescents brought to
juvenile court. Amer. J. Orthopsychiat., 1950, 20:719-731.

MARKEY, O. B.
Psychosomatic factors in behavior disturbances. J. soc. Ther., 1958,
4:3, 3rd Quarter.

MARKEY, O. B. & LANGSAM, C. L.
What happens to psychiatric contributions in the juvenile court
setting. Amer. J. Orthopsychiat., 1957, 27:4.

MARQUIS, J. N.
Fantasy measures of aggressive behavior. Dis. Abstr., 1961, 21(12):3854-3855.

MARX, M. H.
Some relations between frustration and drive. In M. R. Jones (Ed.)
Nebraska Symposium on Motivation, 1956, Lincoln, Nebr.: Univ. of Nebr.

MASKIT, MAE L., DR.
Management of aggression in preadolescent girls: Its effect on
certain aspects of ego functioning. Dis. Abstr., 1961, 22:917.

MASLOW, A. H.
Deprivation, threat and frustration. Psychol. Rev., 1941, 48:364-366.

MASLOW, A. H.
Conflict, frustration and the theory of threat. J. abnorm. soc. Psychol.,
1943, 38:81-86.

MASLOW, A. H., RAND, H., & NEWMAN, S.
Some parallels between sexual and dominance behavior of infra-human
primates and the fantasies of patients in psychotherapy. J. ner. ment.
Dis., 1960, 131:202-213.

MASSERMAN, J. H. (Ed.)
Science and psychoanalysis: VI. Violence and war with clinical studies.
Grune & Stratton, 1963.

MATARAZZO, J. D.
An experimental study of aggression in the hypertensive patient.
J. Pers., 1954, 22:423-447.

MATSUSHIMA, J.
An instrument for classifying impulse control among boys. J. consult.
Psychol., 1964, 28:87-90.

MAY, M. A.
A Social Psychology of War and Peace. New Haven, Conn: 1943.

MC CLELAND, D. C. & APICELLA, F. S.
A functional classification of verbal reactions to experimentally induced
failure. J. abnorm. soc. Psychol., 1945, 4:376-390.

MC CORD, W. MC CORD, JOAN, & HOWARD, A.
Familial correlates of aggression in non-delinquent male children.
J. abnorm. soc. Psychol., 1961, 62:79-93.

- MEDLICOTT, R. W.
Paranoia of the exalted type in a setting of folie a deux: A study of two adolescent homicides. Brit. J. med. Psychol., December, 1955, 28:205-223, Biblio. (7 items).
- MEERLOO, JOOST, A. M.
Suicide, menticide, and psychic homicide. A.M.A. Arch. neurol. Psychiat., 1959, 81:360-362.
- MEERLOO, JOOST A.M.
The concept of psychopathy. Amer. J. Psychother., 1962, 16:625-654.
- MEGARGEE, E. I. & MENDLESOHN, G. A.
The assessment and dynamics of murderous aggression. Paper read at 17th annual convention of the Calif. State Psychological Assn., San Francisco, 1963.
- MEHLMAN, B. & WHITEMAN S. L.
The relationship between certain pictures of the Rosenzweig Picture-Frustration study and corresponding behavioral situations. J. clin. Psychol., 1955, 11:15-19.
- MENNIGER, L.
Love Against Hate. New York: Harcourt, Brace & World, 1942.
- MEYERS, A. F. & OTHERS
Men who kill women. J. clin. Psychopath., January, 1947, 8:381-517, Biblio. (17 items). Personal histories of 24 men admitted to Bellevue Psychiatric Hospital, 1936-1941.
- MICHAELS, J. J.
Enuresis in murderous aggressive children and adolescents. Arch. Gen. Psychiat. (A.M.A.), November, 1961, 5:490-493, Biblio. (10 items). Criticism of Easson and Steinhilber—"have not sufficiently considered psychosomatic disposition."
- MICHAUX, MARY H. & MICHAUX, W. W.
Psychodiagnostic follow-up of a juvenile sex murderer. Robert Lindner's "Charles" thirteen years later. Psychoanal. Rev., 1963, 50:94-112.
- MIKAWA, J. K.
The effect of affiliation need and approval-rejection on feelings of hostility toward self & others. Dis. Abstr., 1963, 24:855-856.
- MILLAR, I. G.
Emotions and blood pressure. J. ment. Sci., 1959, 105.
- MILLER, D. R. & SWANSON, G. E.
The study of conflict. In M. P. Jones (Ed.) Nebraska Symposium on Motivation, 1956, Lincoln, Nebr.: Univ. of Nebr.
- MILLER, D. R. & SWANSON, G. E.
Inner Conflict and Defense. New York: Holt, Rinehart & Winston, 1960.
- MILLER, H. & BARUCH, DOROTHY W.
A study of hostility in allergic children. Amer. J. Orthopsychiat., 1950.
- MILLER, L. C.
Relationships between fantasy aggression and behavioral aggression. Unpublished doctor's dissertation, Harvard Univ., 1953.
- MILLER, N. E.
The frustration-aggression hypothesis. Psychol. Rev., 1941, 48:337-342.
- MILLER, N. E.
Experimental studies of conflict. In J. McV. Hunt (Ed.) Personality and the Behavior Disorders, New York: Ronald Press, 1944.
- MILLER, N. E.
Liberalization of basic SOR concepts: Extension to conflict behavior, motivation and social learning. In Vol. 11, Sigmund Koch (Ed.) Psychology: A Study of a Science, New York: McGraw-Hill, 1959.
- MILLER, N. E. & BUGELSKI, R.
Minor studies of aggression: II. The influence of frustrations by the in-group on attitudes expressed towards out-group. J. Psychol., 1948, 25:437-442.
- MILLER, N. E. & KRAELING, DORIS
Displacement: Greater generalization of approach than avoidance in a generalized approach avoidance conflict. J. exp. Psychol., 1952, 93:217-221.
- MILLER, N. E. & MURRAY, E. J.
Displacement and conflict: Learnable drive as a basis for the steeper gradient of avoidance than of approach. J. exp. Psychol., 1952, 93:227-231.
- MILLER, W. B., GERTZ, H., & CUTTER, H. S.
Aggression in a boys' street corner group. J. Psychiat., 1961, 24:347-354.
- MINTZ, A.
A re-examination of correlations between lynchings and economic indices. J. abnorm. soc. Psychol., 1946, 41:159-160.
- MODELL, A. H. & POTTER, H. W.
Human figure drawing of patients with arterial hypertension, peptic ulcer, and bronchial asthma. Psychosom. Med., 1949, 11:282-292.
- MOLINA, M. F.
Study of psychopathic personality in Guatemala. Psychiatry, February, 1947, 10:31-36. Psychiatric interview with multiple murderer and sexual pervert.
- MOLONEY, J. C.
Authoritarianism and intolerance. Int. J. Psychoanal., 1951, 29:236-239.
- MORENO, J. L.
Psychodrama of murder: A joint trial of Lee Harvey Oswald and Jack Ruby. Group Psychother., 1964, 17:61-62.
- MORGAN, PATRICIA & GAIER, E. L.
Direction of aggression in the mother-child punishment situation. Child Develpm., 1956, 27:447-457.

- MORLAN, G. K.
A note on the frustration-aggression theories of Dollard and his associates. Psychol. Rev., 1949, 56:1-8.
- MORRIS, H. H., ESCOLL, P. J., & WEZLER, R.
Aggressive behavior disorders in childhood: A follow-up study. Amer. J. Psychiat., 1956, 112:991-997.
- MORRIS, T. & BLON-COOPER, L.
Murder in microcosm. The Observer, London: 1961. Description of victims accused in 471 capitol murder cases in England between 1957 and 1960.
- MOSES, L., DANIELS, G. E., & NICKERSON, J. L.
Psychogenic factors in essential hypertension: Methodology and preliminary report. Psychosom. Med., 1956, 28:471-485.
- MOSSE, HILDE L.
Aggression and violence in fantasy and fact. Amer. J. Psychother., 1948, 2:477-483.
- MOSSE, HILDE L.
The influence of mass media on the mental health of children. Acta Paedopsychiatrica, 1963, 30:103-111.
- MOULTON, R. W.
Antecedents of aggressive expression in psychosis. Unpublished doctor's dissertation, Univ. of Michigan, 1958.
- MOULTON, R. W. & MC NEIL, E. B.
The relationship of the socialization process to the handling of aggression in psychiatric patients. Pap. Mich. Acad. Sci. Arts, Letters, 1957, 42.
- MOYNIHAN, M.
Hostile and sexual behavior patterns of South American and Pacific Laridae. Behav. Suppl., 1962, No. 8.
- MUKHERJEE, K. & KUNDU, S.
A study of birth order and family positions of the criminals. Indian J. Psychol., 1961, 36:127-132.
- MUNDY-CASTLE, A. C.
The EEG in 22 cases of murder or attempted murder. Dig. neurol. Psychiat., 1957, Series 25, 93.
- MURPHY, G. E.
The patient's psychological resources in fighting diseases. Neuropsychiatry, 1952-1953, 2:121-140.
- MURPHY, LOIS B.
Social Behavior and Child Personality: An Exploratory Study of Some Roots of Sympathy. New York: Columbia, 1937.
- MURPHY, R. F.
Intergroup hostility and social cohesion. Amer. Anthropol., 1957, 59.

- MURSTEIN, B. I.
The projection of hostility on the Rorschach and as a result of ego-threat. J. proj. Tech., 1956, 20:418-438.
- MURSTEIN, B. I.
Some determinants of the perception of hostility. J. consult. Psychol., 1958, 22:65-69.
- MURSTEIN, B. I.
The effect of amount of possession of the trait of hostility on accuracy of perception of hostility in others. J. abnorm. soc. Psychol., 1961, 62.
- MURSTEIN, B. I.
TAT hostility and the Buss hostility scale. Percept. mot. Skills, 1963, 16:520.
- MURSTEIN, B. I., DAVID, C., FISHER, D., & FURTH, H.
The scaling of the TAT for hostility by a variety of scaling methods. J. consult. Psychol., 1961, 25:497-504.
- MURSTEIN, B. I. & WHEELER, J. I., JR.
The projection of hostility on the Rorschach and thematic stories test. J. clin. Psychol., 1959, 15(3):316-319.
- MURSTEIN, B. I. & WIENS, A. N.
A factor analysis of various hostility measures on a psychiatric population. J. proj. Tech., 1963, 27:447-451.
- MUSSEN, P. H.
Some personality and social factors related to changes in children's attitude toward Negroes. J. abnorm. soc. Psychol., 1950, 45:423-441.
- MUSSEN, P. H. & NAYLOR, H. K.
The relationships between overt and fantasy aggression. J. abnorm. soc. Psychol., 1954, 49:235-240.
- MUSSEN, P. H. & RUTHERFORD, E.
Effects of aggressive cartoons on children's aggressive play. J. abnorm. soc. Psychol., 1961, 62:461-464.
- MUSTE, M. J. & SHARP, D. F.
Some influential factors in the determination of aggressive behavior in preschool children. Child Developm., 1947, 18:11-28.

- NACHT, S.
Clinical manifestations of aggression and their role in psychoanalytic treatment. Int. J. Psychoanal., 1948, 29:201-223.
- NAGELBERG, L.
Quarreling as a love relationship in adolescent girls. Quart. J. child Behav., 1951, 3:66-77..
- NEIBERG, N. A.
The effect of induced stress on the management of hostility in essential hypertension. Unpublished doctor's dissertation, Boston Univ., 1957.
- NEIBERG, N. A.
Murder and suicide. Arch. Crim. Psychodyn., Spring, 1961, 4:253-269.
- NELSON, J. T. & ERSTEIN, S.
Relationships among three measures of conflict over hostility. J. consult. Psychol., 1962, 26:345-350.
- NETTLER, G.
Antisocial sentiment and criminality. Amer. sociol. Rev., 1959, 24:202-208.
- NEUSTATTER, W. L.
The Mind of the Murderer. Philosophical Library, 1957 case reports.
- NEWCOMB, T. M.
Autistic hostility and social reality. Hum. Rel., 1947, 21:69-86.
- NEW JERSEY YOUTH STUDY COMMISSION
The dangerous juvenile; twenty-sixth public hearing, October 28, 1959, Trenton, 1959.
- NEWMAN, RUTH G.
The assessment of progress in the treatment of hyperaggressive children with learning disturbances within a social setting. Amer. J. Orthopsychiat., 1959, 29:633-643.
- NOSHPIITZ, J. D. & SPIELMAN, P.
Diagnosis: Study of the differential characteristics of hyperaggressive children. Amer. J. Orthopsychiat., 1961, 31:111-122.
- NUFFELD, E.
Neuro-physiology and behavior disorders in epileptic children. J. ment. Sci., 1961, 107:438-456.

- O'CONNELL, B. A.
Amnesia and homicide. Brit. J. Delinq., April, 1960, 10:262-276.
Study of 50 murderers.
- OKEN, D.
An experimental study of suppressed anger and blood pressure. Arch. gen. Psychiat., 1960, 2:441-456.
- O'NEIL, D.
Stress and disease: A review of principles. Brit. med. J., 1958, 5091:285-287.
- OSTERBERG, MARY N.
A comparison of aggression in dreams and TAT stories.
Unpublished master's thesis, Western Reserve Univ., 1951.
- OSTOW, M. F.
Theory of aggression: Panel report. J. Amer. Psychoanal. Assn., 1957, 5:556-564.
- OTHEMAN, JANE E. & FRIEDMAN, S.
The role of hostility in affective psychosis. J. nerv. ment. Dis., 1943, 97:170-196.
- OTTIS, NANCY B. & MCCANDLESS, B.
Responses to repeated frustrations of young children differentiated according to need area. J. abnorm. soc. Psychol., 1955, 50:349-353.
- OWEN, THELMA V. & STEMMERMAN, M. G.
Aggressive behavior. Ment. Hyg., 1949, 33:434-442.

- PAGE, H. A.
Studies in fantasy: Daydreaming and the TAT. Summarized paper read before Div. 12 at the 1956 meeting of the Amer. psychol. Assoc.
- PAGE, H. A.
Studies in fantasy -- daydreaming frequency and Rorschach scoring categories. J. consult. Psychol., 1957, 21.
- PAGE H. A.
The assessment of daydreaming behavior. Percept. mot. Skills, 1960, 10:110.
- PALMER, S.
A Study of Murder. New York: Crowell, 1960. Study of 50 men convicted of murder.
- PALMER, S.
Frustration, aggression, & murder. J. abnorm. soc. Psychol., 1960, 60:430-432.
- PALVER, S. E.
Deflection of hostility in folie a deux. Gen. Psychiat., 1961, 5:257-265.
- PAPANEK, HELENE
Expression of hostility: Its value in the psychotherapy group. J. indiv. Psychol., 1962, 18:62-67.
- PASTORE, N.
A neglected factor in the frustration-aggression hypothesis: A comment. J. Psychol., 1950, 19:271-279.
- PASTORE, N.
The role of arbitrariness in the frustration-aggression hypothesis. J. abnorm. soc. Psychol., 1952, 47:728-731.
- PATTERSON, G. R.
A nonverbal technique for the assessment of aggression in children. Child Develpm., 1960, 31:643-653.
- PATTERSON, G. R.
Reinforcement of aggression by the peer group. Unpublished manuscript, 1963.
- PATTERSON, G. R., LUDWIG, M., & SONODA, BEVERLY
Reinforcement of aggression in children. Unpublished manuscript.
- PATTERSON, J.
The assessment of drive and inhibition in children. Paper from A.P.A. Convention, 1957. Additional validation material, cartoon test.
- PATTIE, F. A.
The effect of hypnotically induced hostility on Rorschach responses. J. clin. Psychol., 1954, 10:161-164.

- PEARL, D. & BERG, P. S. D.
Time perception and conflict arousal in schizophrenia.
J. abnorm. soc. Psychol., 1963, 66:332-338.
- PEIZER, S. B.
Effect of incarceration on the direction of aggressive behavior.
J. corr. Psychol., 1956, 1 & 2.
- PEPITONE A. & KLEINER, R.
The effect of threat and frustration on group cohesiveness.
J. abnorm. soc. Psychol., 1957, 54:192-199.
- PEPITONE A. & REICHLING, G.
Group cohesiveness and the expression of hostility. Hum. Rel.,
1955, 3:327-338.
- PEPITONE A. & WILPIZEAK, C.
Some consequences of experimental rejection.
J. abnorm. soc. Psychol., 1960, 60:3.
- PERDUE, W. C.
A study of the Rorschach records of 47 murderers. J. Soc. Ther.,
1961, 7:158-167.
- PETERSON, D. R., QUAY, H. C., & CAMERON, G. H.
Personality and background factors in juvenile delinquency as inferred
from questionnaire responses. J. consult. Psychol., 1959, 23:395-399.
- PETERSON, R. A. & OTHERS
Stabilities in a deviance study of assaultive and non-assaultive offenders.
J. crim. Law Criminol. & Police Sci., 1962, 53:44-48. Examination of
1958 arrest records of St. Louis Police Department to show that individuals
tend to commit violent or non-violent crimes, but not both.
- PHILLIPS, L. & SMITH, J. G.
Rorschach Interpretation: Advanced Technique. New York:
Grune & Stratton, 1953.
- PIROJNKOFF, L. A.
Catharsis the role of perceptual change in the reduction of hostility.
Unpublished doctor's dissertation, Univ. of Texas, 1958.
- PITTMAN, D. J. & HANDY, W.
Patterns in criminal aggravated assault. J. crim. Law Criminol. & Police
Sci., 1964, 55:462-470.
- PODOLSKY, E.
Mind of the murderer. J. crim. Law Criminol. & Police Sci., May-June, 1954,
45:48-50.
- PODOLSKY, E.
Notes on motiveless murder. Int. J. soc. Psychiat., Spring, 1956, 1:42-45.
- PODOLSKY, E.
The diseased brain and homicide. J. nerv. ment. Dis., December, 1956,
124:621-624, Biblio. (6 items). Case histories presented as evidence
that criminal activity has resulted in some cases of brain disease.
- PODOLSKY, E.
The psychotic murderer. Ind. med. Record, 1957, 77: (March) 1-4.
- PODOLSKY, E.
The psychodynamic of filicide. Ind. med. Record, 1957, 77: (Oct.) 1-4.
- PODOLSKY, E.
Severe premenstrual tension and homicide. Pakistan med. J., 1958, 9:1-3.
- PODOLSKY, E.
The psychodynamics of murder. Bombay med. Digest, 1959, 217-221.
- PODOLSKY, E.
Scnambulistic homicide. Dis. nerv. System, 1959, 20:1-3.
- PODOLSKY, E.
Jealousy as a motive in homicide. Dis. nerv. System, 1961, 22:1-4.
- PODOLSKY, E.
The electrophysiology of homicide. J. forensic Med., 1961, 8:161-164.
- PODOLSKY, E.
Children who kill. Acta criminologiae et medicinae legalis Japonica, 1964,
30:39-42.
- PODOLSKY, E.
The manic murderer. Corr. Psychiat. J. soc. Ther., 1964, 10:213-217.
- POTHAST, M.D.
A Personality Study of Two Types of Murderers. Thesis (Ph.D.), Abstract:
Dissertation Abstracts, 1957, 17(4):898-899. Rorschach test and MMPI
administered to 40 murderers (20 murdered their wives and 20 murdered
while committing armed robbery).
- POTTHARST, K. E.
Game-Theory approach to delinquent interaction. Presented at California
Psychol. Assn. Conv., 1963.
- POTTHARST, K. E.
Towards a familial game-theory model for the origins of acting-out and
character pathology. Presented at California Psychol. Assn. Conv., 1963.
- PORTERFIELD, A. L.
Indices of suicides and homicides by states and cities. Amer. sociol.
Rev., 1951 (August), 14:481.
- PURCELL, K.
The TAT and antisocial behavior. J. consult. Psychol., 1956, 20:448-456.
- PUTOFF, O.
A study of perception of violence. Research Newsletter, California
Department of Corrections, 1962, 1-2:4-7.

- RADER, G. E.
The prediction of overt verbal behavior from Rorschach content.
J. proj. Tech., 1957, 21:294-306.
- RADKE, MARION J.
The relation of parental authority to children's behavior and attitudes.
Univ. Minn. Inst. Child Welf. Monogr. Ser., 1946, #22.
- RAGOZZINO, D.
The various types and distribution of radiological signs of meningo-cerebral affections in a case group of normal and delinquent subjects.
Lgienement, 1963, 7:170-189.
- RAIZEN, K. H.
A case of matricide-patricide. Brit. J. Delinq., April, 1960, 10:277-294.
- RAMBERT, MADELINE L.
Children in Conflict. New York: Int. Univ. Press, 1949.
- RANK, BEATA
Aggression. In Psychoanalytic study of the child. Int. Univer. Press, New York, 1949.
- RAPAPORT, A., LEWIS, F.
Richardson's mathematical theory of war. J. conflict. Resolut., 1957, 1:250-259.
- RAPER, A. F.
The Tragedy of Lynchings. Chapel Hill: Univ. of North Carolina Press, 1933.
- RATHMELL, T. L. & CORRIN, K. M.
Retrospective study of a case involving homicide. J. nerv. ment. Dis., March, 1940, 91:316-322, Biblio. (5 items).
- RAUSH, H. L., DITTMANN, A. T., & TAYLOR, T. J.
The interpersonal behavior of children in residential treatment.
J. abnorm. soc. Psychol., 1959, 58.
- RAUSH, H. L., DITTMANN, A. T., & TAYLOR, T. J.
Person, setting, and change in social interaction. Hum. Relat., 1959, 12:361-378.
- RAUSH, H. L., FAREMAN, I., & LLEWELLYN, L. G.
Person, setting, and change in social interaction. II. A normal-control study. Hum Relat., 1960, 13:305-331.
- RAUSH, H. L. & SWEET, BLANCHE
The preadolescent ego: some observations of normal children.
Psychiatry, 1961, 24.
- RECKLESS, W. C., DINITZ, S. & KAY, BARBARA
The self component in potential delinquency and potential non-delinquency.
Amer. sociol. Rev., 1957, 22:566-570.

- REDL, F. & WINEMAN, D.
The Aggressive Child. Glencoe, Illinois: Free Press, 1957.
- REICHARD, S. & TILMAN, C.
 Murder and suicide as defenses against schizophrenic psychosis.
J. Clin. Psychopath., 1963.
- REIK, T.
The Unknown Murderer: Translated from German by Katherine Jones.
 New York: Int. Univ. Press, 1949.
- REINHARDT, J. M.
The Murderous Trail of Charles Starkweather. Springfield, Illinois:
 Charles C. Thomas, 1960.
- REINHARDT, J. M.
 The sentimental murderer: Why does he kill? Police, July-August,
 1961, 5:75-76.
- REISER, M. F., BRUST, A. A., & FERRIS, E. B.
 Life situations, emotions, and the course of patients with arterial
 hypertension. Psychosom. Med., 1951, 13:133-139.
- REISER, M. F., REEVES, R. B., & ARMINGTON, J.
 Effect of variations in laboratory procedure and experiments upon
 ballistocardiogram, blood pressure, and heart rate in healthy young men.
Psychosom. Med., 1955, 17:185-199.
- REISER, M. F., ROSENBAUM, M., & FERRIS, E. B., JR.
 Psychological mechanisms in malignant hypertension. Psychosom. Med.,
 1951, 13:147-159.
- REYMERT, M. D.
Feelings and Emotions. New York: McGraw-Hill, 1950.
- REYNOLDS, G. S., CATONIA, A. C., & SKINNER, B. F.
 Conditional & unconditional aggression in pigeons.
J. exp. Anal. Behav., 1963, 6:73-74.
- REZNIKOFF, M.
 Social desirability in TAT themes. J. proj. Tech., 1961, 25:1.
- REZNIKOFF, M. & DOLLIN, A.
 Social desirability and the type of hostility expressed on the TAT.
J. clin. Psychol., 1961, 17:315-317.
- RIGGS, MARGARET M.
 Recall and organization of aggressive words under varied conditions of
 emphasis. Percept. mot. Skills, 1956, 6:273-284.
- RILEY, MATILDA W. & RILEY, J. W.
 A sociological approach to communication. In W. Schramm (Ed.), The
 Process and Effects of Mass Communication. Urbana, Illinois: Univ. of
 Illinois Press, 1954.
- RINLANASH, C. J. & GNEO, M. J.
 Investigation of autonomic responses in psychopathic personalities.
So. med. J., 1950, 43:953-956.
- ROBBINS, L. L.
 Psychological factors in essential hypertension. Bull. Menninger Clin.,
 1948, 12:195-202.
- ROBIN, A. M.
 The stabilizing effect of occupational therapy on chronic psychotics
 with a tendency to aggressive forms of behavior. J. Ment. Sci., 1957,
 103:597-600.
- ROBINSON, B. W.
 A study of hostility as reflected by the differential learning and
 retention of schizophrenic patients. Unpublished doctor's dissertation,
 Purdue Univ., 1954.
- ROBINSON, ELIZABETH F.
 Doll play as a function of the doll family constellation. Child Develpm.,
 1946, 17:99-120.
- RODGERS, C. R.
The Clinical Treatment of the Problem Child. Boston: Houghton Mifflin, 1959.
- ROEBUCK, J. & JOHNSON, R.
 The Negro drinker and assaulter as a criminal type. Crim. Delinq.,
 1962, 8:21-33.
- ROEHL, A. C.
 The effects of frustration on the amplitude of a simple motor response.
 Unpublished doctor's dissertation, Univ. of Minnesota, 1959.
- ROFF, M. & ROFF, L.
 An analysis of the variance of conflict behavior in preschool children.
Child Develpm., 1940, 11:43-60.
- ROGER, C. R. & SKINNER, B. F.
 Symposium: Some issues concerning control of human behavior.
Science, 1956, 124:1057-1066.
- ROGERS, A. H. & PAUL, C.
 Impunitiveness and unwitting self-evaluation. J. proj. Tech.,
 1959, 23:459-461.
- ROHOVIT, E. B. & ROSS, W. D.
 Hostility in verbal productions and hypnotic dreams of hypertensive
 patients: Studies of Groups and Individuals. Psychosom. Med., 1961,
 23:311-322.
- ROMANO, R.
 Hostility in the transference. Psychoanal. Rev., 1959, 46:90-106.
- ROSANOFF, A. J.
 Thirty condemned men. Amer. J. Psychiat., January, 1943, 99:484-495.
 Case histories of 30 murderers condemned to death by California Courts.

- ROSE, G. J.
Screen memories in homicide acting out. Psychoanal. Quart., April, 1960, 29:328-343, Biblio. (40 items). Story of a murderer of a 3 year old girl.
- ROSENBAUM, M. E. & DE CHARMS, R.
Direct and vicarious reduction of hostility. J. abnorm. soc. Psychol., 1960, 60:105-111.
- ROSENBAUM, M. E. & STANNERS, R. F.
Self-esteem, manifest hostility, and expression of hostility. J. abnorm. soc. Psychol., 1961, 63:646-649.
- ROSENZWEIG, S.
The experimental measurement of types of reactions to frustration. In H. A. Murray (Ed.) Explorations in Personality, New York: Oxford, 1939.
- ROSENZWEIG, S.
An outline of frustration theory. In J. McV. Hunt (Ed.) Personality and Behavior Disorders, New York: Ronald Press, 1944.
- ROSENZWEIG, S.
The Rosenzweig Picture Frustration Study, Children's Form. In A. I. Rabin & M. R. Haworth (Eds.) Projective Techniques with Children. New York: Grune & Stratton, 1960.
- ROSENZWEIG, S. & OTHERS
The psychodynamics of an uxoricide. Amer. J. Orthopsychiat., April, 1942, 12:283-293. Study of a 48 year old man.
- ROSENZWEIG, S. & ROSENZWEIG, L.
Aggression in problem children and normals as evaluated by the Rosenzweig P-F Study. J. abnorm. soc. Psychol., 1952, 47:683-687.
- ROTHAUS, P.
The experimental reduction of hostility. Dis. Abstr., 1961, 21:2786.
- ROTHAUS, P.
Problems in the measurement of aggression-anxiety. J. proj. Tech., 1962, 26:327-331.
- ROTHAUS, P. & WORCHEL, P.
The inhibition of aggression under non-arbitrary frustration. J. Pers., 1960, 28:108-117.
- ROTHAUS, P. & WORCHEL, P.
EG support, communication, catharsis, and hostility. J. Pers., 1964, 32:297-312.
- ROTHENBERG, A.
Puerto Rico and aggression. Amer. J. Psychiat., 1964, 120:962-970.
- ROTTER, J. B. & WICKENS, D. D.
The consistency and generality of ratings of "social aggressiveness." Made from observation of role playing situations. Amer. Psychologist, 1947, 2:333.

- SALTZ, G. & EPSTEIN, S.
Thematic hostility and guilt responses as related to self-reported hostility, guilt, and conflict. J. abnorm. soc. Psychol., 1963, 67:463-479.
- SANDERS, R. & CLEVELAND, S. E.
The relationship between certain examiner personality variables and subject's Rorschach scores. J. proj. Tech., 1953, 17:34-50.
- SAPOLSKY, A.
Effect of interpersonal relationships upon verbal conditioning. J. abnorm. soc. Psychol., 1960, 60:241-246.
- SARASON, I. G.
The effects of anxiety and threat on the solution of a difficult task. J. abnorm. soc. Psychol., 1961, 62:165-168.
- SARASON, I. G.
Intercorrelations among measures of hostility. J. cli. Psychol., 1961, 17:192-195.
- SARGENT, D.
Children who kill - a family conspiracy? Social Work, January, 1962, 7:35-42. Nine child homicide cases referred to Wayne County Juvenile Court in 1959.
- SARGENT, S. S.
Reaction to frustration - a critique and hypothesis. Psychol. Rev., 1948, 55:108-114.
- SARNOFF, I.
Identification with the aggressor: some personality correlates of anti-Semitism among Jews. J. Pers., 1951, 20:199-219.
- SASLOW, G., GRESSEL, G. C., SHOBE, F. O., DU BOIS, P. H., & SCHROEDER, H. A.
The possible etiological relevance of personality factors in arterial hypertension. Psychosom. Med., 1950, 12:292-302.
- SATTEN, J., MENNINGER, K., ROSEN, I., & MAYMAN, M.
Murder without apparent motive: A study in personality disorganization. Amer. J. Psychiat., 1960, 117:48.
- SAUL, L. J.
Hostility in cases of essential hypertension. Psychosom. Med., 1939, 1:153-161.
- SAUL, L. J.
The Hostile Mind: The Sources and Consequences of Rage and Hate. New York: Random House, 1956.
- SAUL, L. J.
Hostility: A bibliography in the psychological sciences with supplementary references from other social sciences. Amer. beh. Scientist, 1961, 4:1-46.
- SAUL, L. J., SHEPPARD, E., SELEY, D., LHAMON, W., & MASTER, R.
The quantification of hostility in dreams with reference to essential hypertension. Science, 1954, 119:382-383.

- SAUNDERS, H. H.
An experimental study of the relationship between aggression and satiation in nursing school children. Dis. Abstr., 1961, 22:646.
- SCHACTER, J.
Pain, fear and anger in hypertensives and normotensives: A psychophysiological study. Psychosom. Med., 1957, 29:17-29.
- SCHACTER, S. & SINGER, J. E.
Cognitive, social and physiological determinates of emotional state. Mimeo., 1962.
- SCHARR, J. H.
Violence in juvenile gangs: Some notes and a few analogies. Amer. J. Orthopsychiat., 1963, 33:29-37.
- SHELLING, T. C.
The strategy of conflict: Prospectus for a reorientation of game theory. J. conflict. Resolut., 1958, 3:203-264.
- SCHMIDEBERG, M.
Child Murderers. Paper before 15th annual meeting of Amer. Society of Criminology, 1958, 49:569-570, March-April, 1959.
- SCHNEIDMAN, E. S. & BARBAROW, N. L.
Clues to Suicide, New York: McGraw-Hill, 1957.
- SCHRAMM, W., LYLE, J., & PARKER, E. B.
Television in the Lives of Our Children. Stanford, California: Stanford, 1961.
- SCHULTZ, L. G.
The wife assaulter. J. soc. Ther., 1960, 6:103-111.
- SCHULTZ, L. G.
Why the Negro carries weapons. J. crim. Law Criminol. & Police Sci., 1962, 53.
- SCHULTZ, S. D.
A differentiation of several forms of hostility by scales empirically constructed from significant items on the Minnesota Multiphasic Personality Inventory. Unpublished doctor's dissertation, Pennsylvania State College, 1954.
- SCHWARTZ, L. A.
An analyzed case of essential hypertension. Psychosom. Med., 1940, 2:478-486.
- SCHWEERS, R.
Some personality correlates of essential hypertension. Unpublished master's thesis, Univ. of California, 1950.
- SCODEL, A. & LIPETZ, M. E.
TAT hostility and psychopathology. J. proj. Tech., 1957, 21:161-165.
- SCOTT, E. M.
A suggested treatment plan for the hostile alcoholic. J. int. group Psychother., 1963, 13:93-100.
- SCOTT, J. P.
Dominance and the frustration-aggression hypothesis. Physiol. Zool., 1948, 21:31-39.
- SCOTT, J. P.
Aggression. Chicago: Univ. of Chicago Press, 1958.
- SCOTT, J. P.
Genetics and the development of social behavior in mammals. Amer. J. Orthopsychiat., 1962, 32:5.
- SCOTT, J. P.
Critical periods in behavioral development. Science, 1962, 138.
- SCOTT, J. P.
Hostility and aggression in animals. In Roots of Behavior, Paul B. Hoerber, Inc., 1962.
- SCOTT, J. P. & FREDERICKSON, E.
The causes of fighting in mice and rats. Physiol. Zoo., 1951, 24:273-304.
- SCOTT, J. P. & MARSTON, MARY-VESTA
Nonadaptive behavior resulting from a series of defeats in fighting mice. J. abnorm. soc. Psychol., 1953, 48:3.
- SCOTT, T. R.
Social reinforcement of aggressive sentences. Unpublished doctor's dissertation, Univ. of Nebraska, 1958.
- SCOTT, W. C. M.
A new hypothesis concerning the relationship of libidinal and aggressive instincts. Int. J. Psychoanal., 1954, 35:234-237.
- SCOTT, W. C. M.
Psychodynamics of father-daughter incest-discussion. Canad. Psychiatric Assn. J., 1962, 7:5.
- SEARS, PAULINE S.
Doll play aggression in normal young children: Influence of sex, age, sibling status, father's absence. Psychol. Monogr., 1951, 65, No. 6.
- SEARS, R. R.
Non-aggressive reactions to frustration. Psychol. Rev., 1941, 48:343-346.
- SEARS, R. R.
Relation of fantasy aggression to impersonal aggression. Child Developm., 1950, 21:4-6.
- SEARS, R. R.
Effects of frustration and anxiety on fantasy aggression. Amer. J. Orthopsychiat., 1951, 21:495-505.
- SEARS, R. R.
Relation of early socialization experience to aggression in middle childhood. J. abnorm. soc. Psychol., 1961, 63.

- SEARS, R. R., HOVLAND, I., & MILLER, M. E.
Minor studies of aggression: I. Measurement of aggressive behavior.
J. Psychol., 1940, 9:275-295.
- SEARS, R. R., PINTLER, MARGARET H., & SEARS, PAULINE S.
Effect of father separation on preschool children's doll play aggression. Child Develpm., 1946, 17:219-243.
- SEARS, R. R., WHITTING, J. W. M., NOWLIS, V., & SEARS, PAULINE S.
Some child-rearing antecedents of aggression and dependency in young children. Genet. Psychol. Monogr., 1953, 47:135-234.
- SEITZ, P. F. D.
Infantile experience and adult behavior in animal subjects. Age of separation from mother and adult behavior in the cat. Psychosom. Med., 1959, 21:353-378.
- SEITZ, P. F. D.
Micro-metapsychologic comparisons of neutralization and sublimation.
Unpublished ms.
- SELLING, L. S.
Murder, Riot and Statistical Studies. (Scientific Reports, Publication No. 2) Detroit, Recorder's Court, Psychopathic Clinic, 1944. A study of 242 cases of murders explained in the Psychopathic Clinic of the Recorder's Court, and a study of 100 offenders who were apprehended during the disturbances of June 20-21, 1943, in Detroit, Michigan.
- SEWARD, J. P.
Aggressive behavior in the rat. I. General characteristics: Age and sex differences. J. comp. Psychol., 1945, 38:175-197.
- SEWARD, J. P.
Aggressive behavior in the rat. III. The role of frustration.
J. comp. Psychol., 1945, 38:225-238.
- SEWARD, J. P.
Aggressive behavior in the rat. IV. Submission as determined by conditioning, extinction and disuse. J. comp. Psychol., 1946, 39:51-76.
- SHAILOVA, C. & CHERMAK, M.
Studies in infanticide in psychotic women. Arch. Neurol. Psychiat., (A.M.A.) November, 1951, 66:655.
- SHANMUGAM, T. E. & SUNDARI, T. A.
Difference between delinquent boys and non-delinquent boys in inhibition, disinhibition and personality traits. Psychol. Stud., Mysore, 1962, 7:64-66.
- SHAPIRO, A. P.
Psychophysiological mechanisms in hypertensive vascular disease.
Ann. Int. Med., 1960, 53:64.
- SHAPIRO, A. P.
An experimental study of comparative responses of blood pressure to different noxious stimuli. J. chronic Dis., 1961, 12:293-311.
- SHAPIRO, D. S.
Perceptions of significant family and environmental relationships in aggressive and withdrawn children. J. consult. Psychol., 1957, 21:381-385.
- SHARPLESS, S. & JASPER, H. H.
Habituation of the arousal reaction. Brain, 1956, 79:655.
- SHASKAN, D. A. & LINDT, H.
Theme of aggressive mother during group therapy: Analysis of group interview. Psychoanal. Rev., 1948, 35:295-300.
- SHEEHAN-DARE, H.
Homicide during a schizophrenic episode. Int. J. Psychoanal., 1955, 36(1):43-52.
- SHELLEY, E. L. V. & TOCH, H. H.
The perception of violence as an indicator of adjustment in institutionalized youthful offenders. J. crim. Law Criminol. Police Sci., 1962, 53:463-469.
- SHEPPARD, EDITH
Systematic dream studies: Clinical judgment and objective measurements of ego strength. Comprehensive Psychiatry, 1963, 4.
- SHEPPARD, EDITH & SAUL, L. J.
An approach to a systematic study of ego function. Psychoanal. Quart., 1958, 27:237-245.
- SHERIF, M. & SHERIF, CAROLYN W.
Groups in Harmony and Tension. New York: Harper, 1953.
- SHERLOCK, J. R.
The history of homicide; The legal and psychological evolution of murder. J. soc. Ther., 5:1.
- SHERMAN, JAMES (Student Research CDC)
A study on the hostility and aggression levels of inmates at the California Institution for Men and College Males. (A paper) Advisors: Dr. Geis, Pomona College; M. W. Feirman, IT.
- SHOLITON, L., WOHL, T., & WERK, E.
The correlation of two psychological variables, anxiety and hostility, with adrenal cortical function in patients with lung cancer. Cancer, 1963, 16:223-230.
- SHORT, J. F. & STRODBECK, F. L.
The response of gang leaders to status threats: An observation on group process and delinquent behavior. Amer. J. Sociol., 1963, 68:571-579.
- SHUVAL, JUDITH T.
The role of class instructing inter-group hostility. Hum. Relat., 1957, 10:61-75.
- SIEGEL, ALBERTA E.
Film-mediated fantasy aggression and strength of aggressive drive. Child Develpm., 1956, 27:365-378.

- SIEGEL, ALBERTA E.
Aggressive behavior of young children in the absence of an adult.
Child Develpm., 1957, 28:371-378.
- SIEGEL, ALBERTA E. & COHN, L. G.
Permissiveness, permission, and aggression: The effect of adult presence or absence of aggression in children's play.
Child Develpm., 30:131.
- SIEGEL, H. S. & SIEGEL, P. B.
The relationship of social competition with endocrine weights and activity in male chickens. Anim. Beh., 1961, 9:151-158.
- SIEGEL, P. B.
A method of evaluating aggressiveness in chickens. Poult. Sci., 1960, 39:1046-1048.
- SIEGEL, S. M.
The relationship of hostility to authoritarianism. J. abnormal SOC. Psychol., 1956, 52:109-115.
- SIEGEL, S. M. & FELDMAN, M. J.
A note on the effect on self description of combining anxiety and hostility items on a single scale. J. clin. Psychol., 1958, 14:389-390.
- SIEGEL, S. M., SPILKA, B., & MILLER, L.
The direction of manifest hostility: Its measurement and meaning. Paper read at convention of the A.P.A., New York, September, 1957.
- SIMPKINS, L.
Generalization effects of hostile verb reinforcement as a function of stimulus similarity and type of reinforcer. J. Pers., 1961, 29:64-72.
- SINES, J. O.
Conflict-related stimuli as elicitors of selected physiological responses. J. proj. Tech., 1957, 21:194-198.
- SINGER, M. T. & SCHEIN, E. H.
Projective test responses of prisoners of war following repatriation. Psychiatry, 1958, 21:375-385.
- SINGER, R. G. & SHAW, C. G.
The passive aggressive personality. U. S. Armed Forces med. J., 1957, 8:62-69.
- SJOSTEDT, ELSIE M.
A study of the personality variables related to assaultive and acquisitive crimes. Unpublished doctor's dissertation, Purdue Univ., 1955.
- SLAVSON, S. R.
The treatment of aggression: VII. Through group therapy. Amer. J. Orthopsychiat., 1943, 13:410-426.
- SLOAN, R. D., HABIB, A., EVESON, M. B., & PAYNE, R. W.
Some behavioral and other correlates of cholesterol metabolism. J. psychosom. Res., 1961, 5:183-190.
- SLOANE, R. B., DAVIDSON, P., HOLLAND, L., & PAYNE, R. W.
Aggression & effects of upbringing in normal students. Arch. gen. Psychiat., 1962, 7:374-384.
- SMITH, DOROTHEA M.
An analysis of aggression among patients in a mental hospital. Unpublished doctor's dissertation, Univ. of Pittsburgh, 1951.
- SMITH, G. B.
Murder - study of 200 cases. J. soc. Ther., 1957.
- SMITH, G. B.
Situational murder due to emotional stress. J. soc. Ther., Fourth Quarter, 1958, 4:173-181.
- SMITH, G. B.
Murder of infants by parents in situations of stress. J. soc. Ther., First Quarter, 1960, 6:9-17.
- SMITH, G. B.
Sex offenders: Their therapeutic possibilities and the legal difficulties encountered in a 20 year experience in the psychiatric division, Illinois, Dept. of Public Safety, Menard, Ill. Taken from conference of the Int. Assn. Corr. Med., 1963, Vienna.
- SMITH, J. G.
Influence of failure, repressed hostility, and stimulus characteristics on verbal learning and recognition. J. Pers., 1954, 22:475-493.
- SMITH, J. R. & COLEMAN, J. C.
The relationship between manifestations of hostility in projective tests and overt behavior. J. proj. Tech., 1956, 20:326-334.
- SNOKE, M. L.
A study in the behavior of men students of high and low measured hostility, under two conditions of goal clarity. Unpublished doctor's dissertation, Univ. of Minnesota, 1955.
- SOBEL, R.
Treatment of character-conditioned hostility in adolescents. Nerv. Child, 1949, 8:301-310.
- SOFFER, L.
Retroactive inhibition with aggressive and non-aggressive word lists on neurotic and normal subjects. Unpublished doctor's dissertation, Univ. of Illinois, 1956.
- SOLOMON, F. & FISHMAN, J. R.
The psychosocial meaning of non-violence in student civil rights activities. Psychiatry, 1964, 27:91-99.
- SOMMER, R. & SOMMER, DOROTHY
Assaultiveness and two types of Rorschach color responses. J. consult. Psychol., 1958, 22:56-62.
- SPERLING, M.
A psychoanalytic study of migraine and psychogenic headache. Amer. psychosom. soc. Forums, 1950, 1.

- SPERRY, R. W.
Destructive fantasies in certain hearing difficulties.
Amer. J. Orthopsychiat., 1952, 22:356.
- SPITZ, R.
Aggression: Its role in the establishment of relation, drives, affects, behavior. Int. Univ. Pr., 1953.
- STAFFORD-CLARK, D. & TAYLOR, F. H.
Clinical and electroencephalographic studies of prisoners charged with murder. J. neurol. neurosurg. Psychiat., 1949, 12:325-330.
- STAGNER, R. & CONGDON, D. S.
Another failure to democratic displacement of aggression. J. abnorm. soc. Psychol., 1955, 51:695-696.
- STAGNER, R.
Studies of aggressive social attitudes: i.e., Measurement and inter-relation of selected attitudes. J. soc. Psychol., 1944, 20:109-120.
- STARR, S.
The relationship between hostility-ambiguity of the TAT cards, hostile fantasy, and hostile behavior. Dis. Abstr., 1961, 21:2372-2374.
- STARER, E. D.
Aggressive reactions and sources of frustration in anxiety neurotics and paranoid schizophrenics. J. clin. Psychol., 1952, 8:307-309.
- STEARNS, A. W.
Murder by adolescents with obscure motivation. Amer. J. Psychiat., October, 1957, 114:303-305, Biblio. (3 items).
- STEIN, S. I.
Major cause of war: emotional incompetency; emotional or psychogenic factor of behavioral control. J. nerv. ment. Dis., 1950, 112:66-74.
- STERN, E. S.
The Medea complex: The mother's homicidal wishes to her children. J. ment. Sci., April, 1948, 94:321-331.
- STONE, A. A.
The effect of sanctioned overt aggression on total instigation to aggressive responses. Unpublished honors thesis, Harvard Univ., 1950.
- STONE, H.
The relationship of hostile aggressive behavior to aggressive content of the Rorschach and Thematic Apperception Test. Unpublished doctor's dissertation, U.C.L.A., 1953.
- STONE, H.
The TAT aggressive content scale. J. proj. Tech., 1956, 20:445-452.
- STORMENT, CAROLYN T. & FINNEY, B. C.
Projection and behavior: A Rorschach study of assaultive mental hospital patients. J. proj. Tech., 1953, 17:349-360.
- STOTLAND, E.
Peer groups and reactions to power figures. In D. Cartwright (Ed.) Studies in Social Power, Ann Arbor: Inst. for Soc. Res., 1959.
- SIRICKER, G.
Scapegoating: An experimental investigation. J. abnorm. soc. Psychol., 1963, 67:125-131.
- SIRICKLAND, L. H. & JONES, E. E.
Effects of group support on the evaluation of an antagonist. J. abnorm. soc. Psychol., 1960, 61:73-81.
- SIRIZVER, G. L.
Thematic sexual and guilt responses as related to stimulus-relevance and experimentally induced drive and inhibition. Unpublished doctor's dissertation, Univ. of Mass., 1961.
- STURER, E.
Aggressive reactions and sources of frustration in anxiety neurotics and paranoid schizophrenics. J. clin. Psychol., 1953, 8:307-309.
- STURM, R. J.
The relationship between aggressive fantasy and non-conformative behavior. Unpublished doctor's dissertation, Univ. of Texas, 1956.
- SUTHERLAND, E. H. & CRESSEY, D. R.
Principles of Criminology (6th ed.). Philadelphia: Lippencott, 1960.
- SVALASTOGA, K.
Homicide and social contact in Denmark. Amer. J. Soc., July, 1956, 62:37-41. Police records in Copenhagen suggested murderers in peacetime tend to select victims among relatives and acquaintances, rather than strangers.

- TAFFEL, C.
Anxiety and the conditioning of behavior. J. abnorm. soc. Psychol., 1955, 512:496-501.
- TAK AHASHI, S.
An investigation into aggressive behavior of children as seen through projective tests. Jap. J. educ. Psychol., 1960, 8:85-91.
- TAPPAN, P. W.
The dangerous sex offender: Before 14th annual meeting of Middle Atlantic States Conference of Corrections. J. crim. Law Criminol. & Police Sci., 1951, 42:499-500.
- TAPPAN, P. W.
Crime, Justice, and Correction. New York: McGraw-Hill, 1960.
- TARACHOW, S.
Concerning homicide impulses toward the psychoanalyst. J. of the Hillside Hospital, 1956, 5(4):416-418.
- TEST, F. H.
Social aggressiveness in an amphibian. Science, 1954, 120:140-141.
- THEODORSON, G. A.
The function of hostility in small groups. J. soc. Psychol., 1962, 56:57-66.
- THIBAUT, J. W.
An experimental study of the cohesiveness of underprivileged groups. Hum. Relat., 1950, 3:251-278.
- THIBAUT, J. W. & COULES, J.
The role of communication in the reduction of inter-personal hostility. J. abnorm. soc. Psychol., 1952, 47:770-778.
- THIBAUT, J. W. & RIECKEN, H. W.
Authoritarianism, status, and the communication of aggression. Hum. Relat., 1955, 8:95-120.
- THOMAS, D. A.
Irresponsibility of juvenile delinquents. Amer. J. Psychiat., 1942, 99:330-337. Case of a boy (15 years) arrested and indicted for murder.
- THOMPSON, T. I.
Effect of chlorpromazine on aggressive responding in the rat. J. compar. Physiol., 1961, 54:454-457.
- THOMPSON, T. I.
The effect of two phenothiazines and a barbiturate on extinction-induced rate increase of a free operant. J. comp. physiol. Psychol., 1962, 55: 714-718.

THOMPSON, T. I.
Visual reinforcement in siamese fighting fish. Tech. Rep. No. 63-64.
Laboratory of Psychopharmacology, Dept. Psychology, Univ. of Maryland.

THOMPSON, T. I.
Visual reinforcement in fighting cocks. Tech. Rep. No. 62-33.
Laboratory of Psychopharmacology, Dept. Psychology, Univ. of Maryland.

THOMPSON, W. L.
Agnostic behavior in the house finch. II. Factors in aggressiveness
and sociality. Condor., 1960, 62:378-402.

THORNE, F. C.
The frustration-anger-hostility states: A new diagnostic classification.
J. clin. Psychol., 1959, 59:193-198.

TITCHENER, J. L., SHELDON, M. B., & ROSS, W. D.
Changes in blood pressure of hypertensive patients with and without
group psychotherapy. J. psychosom. Res., 1959, 4.

TOBY, J.
The differential impact of family disorganization. Amer. soc. Rev.,
1957, 22:505-512.

TOCH, H. H. & SCHULTE, R.
Readiness to perceive violence as a result of police training.
Brit. J. Psychol., 1961, 52:389-393.

TOIGO, R., WALDER, L. O., ERON, L. D., & LEFKOWITZ, M. M.
Examiner effect in the use of a near sociometric procedure in the
third grade classroom. Psychol. Rep., 1962, 11:785-790.

TOPPING, RUTH
Case studies of aggressive delinquents. Amer. J. Orthopsychiat.,
July, 1941, 11:485-492. Study of 55 boys at New York State Training
School who made violent and dangerous attacks.

TOWBIN, A. P.
Hostility in Rorschach content and behavior. J. abnorm. soc. Psychol.,
1959, 58:

TRACTIR, J.
The relationship between anxiety, hypnotically induced emotions, and
gastric secretion. Unpublished doctor's dissertation, Univ. of Houston, 1954.

TRIANDIS, L. M. & LAMBERT, W. M.
Pancultural factor analysis of reported socialization practices.
J. abnorm. soc. Psychol., 1961, 62(3):631-639.

TRIANDIS, L. M. & LAMBERT, W. M.
Sources of frustration and targets of aggression: A cross-cultural study.
J. abnorm. soc. Psychol., 1961, 62:640-648.

TUCKER, W. I.
Psychiatric factors in essential hypertension. Dis. Nerv. Syst.,
1949, 10:273-378.

TURKUS, B. B. & FEDER, S.
Murder, Inc.: The Story of "The Syndicate." New York: Farrar,
Straus and Young, 1952.

TURNER, W. J. & MERLIS, S.
Clinical correlations between electroencephalography and antisocial
behavior. Med. Times, 1962, 90:505.

TUTEUR, W.
Child molesters and men who expose themselves -- an anthropological
approach. J. forensic Sci., 1963, 8:4.

TUTEUR, W.
Can violent behavior be predicted? Conn. Psychiat & J. soc. Ther.,
1963, 9:1.

TUTEUR, W. & GLOTZER, J.
Murdering mothers. Amer. J. Psychiat., 1959, 116:447-452, Biblio.
(9 items). Five cases of filicide admitted to State Hospital,
Elgin, Illinois, during 1956-1958.

ULLRICH, W.

A murderer without a motive; an aspect of the psychology of murder.
Int. Crim. Pol. Rev., February, 1958, 115:34-42. Case in Germany, 1945-1957.

ULRICH, R. E. & CRAINE, W. H.

Behavior: Persistence of shock induced aggression. Science, 1964,
143:971-973.

UNITED STATES CONGRESS, SENATE, COMMITTEE ON THE JUDICIARY

Sub-committee to investigate Juvenile Delinquency (Testimony of Heyman
Start that criminals are becoming more violent in commission of assault,
battery, sex offenses, and robbery), California Department of the Youth
Authority, Report to the Governor, February, 1961.

UNITED STATES SENATE, COMMITTEE ON THE JUDICIARY

Television programs and juvenile delinquency hearings before the
sub-committee to investigate Juvenile Delinquency, 84th Congress,
First Session, 1955.

VANDENBERGH, J. G.

Eosinophil response to aggressive behavior in CFW albino mice.
Anim. Behav., 1960, 8:13-18.

VANDER, L., JR.

Management of hostility in adult males with migraine headaches.
Unpublished doctor's dissertation, Boston Univ., 1955.

VAN DER VALK, J. M.

Blood pressure changes under emotional influences in patients with
essential hypertension and control subjects. J. psychosom. Res., 1957,
2:134-146.

VANE, JULIA R.

A study of frustration, aggression, and level of aspiration in
delinquent girls. Unpublished doctor's dissertation. New York Univ., 1951.

VANE, JULIA R.

Implications of the performance of delinquent girls on the Rosenzweig
picture-frustration study. J. consult. Psychol., 1954, 18:414.

VELDMAN, D. J.

Hostility and self-evaluation. Unpublished doctor's dissertation,
Univ. of Texas, 1960.

VELDMAN, D. J. & WORCHEL, P.

Defensiveness and self-acceptance in the management of hostility.
J. abnorm. soc. Psychol., 1961, 63:319-325.

VERNALLIS, F. F.

Teeth grinding: Some relationships to anxiety, hostility, and hyper-
activity. J. clin. Psychol., 1955, 11:389-391.

VICTOROFF, V. M.

A case of infanticide related to psychomotor automatism. J. Clin.
Experim. Psychopath., 1955, 16:191-200, Biblio. (18 items).

VISHER, J. S.

Successful therapy in a case of infanticide. Arch. Crim. Psychodyn.,
Winter, 1960, 4:76-90.

VON BERTALANFFY, L.

Comments on aggressiveness. Bull. Menninger Clin., 1958, 22:50-57.

VON HENTIG, H.

Pre-murderous kindness and post-murder grief. J. crim. Law Criminol.
& Police Sci., 1957, 48:4.

- WADA, G. & DAVIES, J. C.
Riots and rioters. Western Pol. Quart., 1957, 10:864-874.
- WAEELDER, R.
Critical discussion of the concept of an instinct of destruction.
Bull. Phila. Assn. Psychoanal., 1956, 6:97-109.
- WAGNER, E. A. & MEDVEDEFF, E.
Differentiation of aggressive behavior of institutionalized schizophrenics with the Hand Test. J. proj. Tech., 1963, 27:111-113.
- WAHLER, J. H.
Hostility and aversion for expressing hostility in neurotics and controls.
J. abnorm. soc. Psychol., 1959, 59:193-198.
- WAKE, F. R.
Normal aggression and delinquency. Bull. Maritime Psychol. Assn., 1959, 8.
- WALDER, L. O.
Validating a sociometric measure of aggression. Paper read at Amer. Psycho. Assn. meetings, 1960.
- WALDER, L. O., ABELSON, R. P., ERON, L. D., BANTA, T. J., & LAULICHT, J. H.
The development of a peer-rating measure of aggression. Psychol. Rep., 1961, 9.
- WALDER, L. O., ERON, L. D., LEFKOWITZ, M. M., & TOIGO, R.
Relationships of home and school aggression measures of third grade children. In preparation, 1962.
- WALKER, R. G.
A comparison of clinical manifestations of hostility with Rorschach and MAPS test performances. J. proj. Tech., 1951, 15:444-460.
- WALLIS, D. I.
Aggression behavior in the ant, *Formica fusca* and *Formica sanguinea*.
Anim. Beh., 1962, 10:264-274.
- WALLIS, D. I.
A comparison of the response to aggressive behavior in two species of ants, *Formica fusca* and *Formica sanguinea*. Anim. Beh., 1963, 11:164-171.
- WALTERS, J.
Affectional and aggressive behavior of preschool children. Child. Develpm., 1957, 28:15-20.
- WALTERS, R.
A preliminary analysis of the Rorschach records of fifty prison inmates.
J. proj. Tech., 1953, 17:437-446.
- WALTERS, R. & BROWN, M.
Studies of reinforcement of aggression: III. Transfer of responses to an interpersonal situation. Child Develpm., 1963, 34:563-571.

CONTINUED

1 OF 2

- WALTERS, R. H. & THOMAS, E. L.
Enhancement of punitiveness by visual and audiovisual displays.
Canad. J. Psychol., 1963, 17:244-255.
- WALTERS, R. H., THOMAS, E. L., & ACKER, W. C.
Enhancement of punitive behavior by audio-visual displays.
Science, 1962, 136:872-873.
- WALTERS, R. H. & ZAKS, M. S.
Validation studies of an aggression scale. J. Psychol., 1959, 47:209-218.
- WASMAN, M. & FLYNN, J. P.
Directed attack elicited from hypothalamus. Arch. Neurol., 1962, 6:208-219.
- WATSON, R. E., PRITZKER, L., & MADISON, P.
Hostility in neurotics and normals. J. abnorm. soc. Psychol., 1955, 50:36-40.
- WEATHERLEY, D. A.
An investigation of the relationship between anti-semitism and displacement, projection, and inhibition of aggression. Unpublished doctor's dissertation, Stanford Univ., 1956.
- WEATHERLEY, D. A.
Anti-semitism and the expression of fantasy aggression. J. abnorm. soc. Psychol., 1961, 62:454-457.
- WEATHERLEY, D. A.
Maternal permissiveness toward aggression and subsequent TAT aggression.
J. abnorm. soc. Psychol., 1962, 65:1-5.
- WEATHERLEY, D. A.
Maternal response to childhood aggression and subsequent anti-semitism.
J. abnorm. soc. Psychol., 1963, 66:183-185.
- WEATHERLY, H. E.
Juvenile violence. J. Assn. Psychiat. Treatment Offenders, September, 1958, 2(1-2):6.
- WEINBERG, W. L.
A study of the relationship of the extra-punitive category of the Rosenzweig P-F study to overt behavioral aggression in prisoners. Unpublished master's thesis, 1952, Univ. Oregon.
- WEISS, E.
Psychosomatic aspects of hypertension. J.A.M.A., 1942, 1081-1086.
- WEISS, J. M. A., LAMBERTI, J. W., & BLACKMAN, N.
The sudden murderer: A comparative analysis. A.M.A. arch. gen. Psychiat., 1960, 2:669.
- WEISS, W.
Opinion change as a function of some intrapersonal attributes of the communicatees. J. abnorm. soc. Psychol., 1955, 51.
- WEISS, W.
Emotional arousal and attitude change. Psychol. Rep., 1960, 6:267-280.
- WEISS, W. & FINE, B. J.
The effect of induced aggressiveness on opinion change.
J. abnorm. soc. Psychol., 1956, 52:109-114.
- WEISSMAN, S. L.
Some indicators of acting out behavior from the thematic apperception test. Paper read at 71st convention A.P.A., Philadelphia, 1963.
- WERTHAM, F.
The scientific study of mass media effects. Amer. J. Psychiat., 1962, 119:4.
- WERTHAM, F.
Society and problem personalities: Praetorian Psychiatry.
Amer. J. Psychother., 1963, 17:3.
- WERTHAM, F.
The Show of Violence. Doubleday & Co. Inc., 1949.
- WERTHAM, F.
Seduction of the Innocent. New York: Holt, Rinehart & Winston, 1954.
- WHITHORN, J. C.
Hateful self distrust: A problem in the treatment of schizophrenia.
Amer. J. Psychiat., 1954, 111:420-421.
- WHITING, J. M. W.
The frustration complex in Kwoma society. Man, 1944, 44:140-144.
- WILEY, H., FREIDMAN, M., & AGELLO, C.
Atherosclerotic response of "aggressive" and "passive" groups of chickens to a cholesterol enriched diet. Proc. Soc. exp. biol. Med., 1957, 96:244-246.
- WILLIAMS, B. M., JR.
The reduction of intergroup tensions. SSRC Bull., No. 57, New York: Soc. Sci. Res. Counsel, 1947.
- WILSON, HELEN E.
Overt and fantasied hostility as a function of channels of expression. Unpublished doctor's dissertation, Univ. of Utah, 1958.
- WINNICOTT, D. W.
Hate in the counter-transference. Int. J. Psychoanal., 1951, 30:69-74.
- WINNIK, H. & HOROWITZ, M.
The problem of infanticide. Erit. J. Criminol., 2:40-52. Personal and family backgrounds of 13 women involved in infanticide in Israel, 1950-1957.
- WIRT, R. D.
Ideational expression of hostile impulses. J. consult. Psychol., 1956, 20:185-189.
- WITTENBORN, J. R.
The dimensions of psychosis. J. nerv. ment. Dis., 1962, 134.
- WITTENBORN, J. R. & METLER, F. A.
A lack of perceptual control score for the Rorschach test.
J. clin. Psychol., 1951, 7:331-334.

- WITTMAN, P. & ASTRACHAN, MYRTLE
Psychological investigation of a homicidal youth. J. Clin. Psychol.,
January, 1949, 5:88-93.
- WOHL, T. H., SHOLITON, L. J., & WERK, E. E.
Correlation of anxiety and hostility with adrenal cortical function.
J.A.M.A., 1963, 183:113-114.
- WOLBERG, L. R.
A note on the treatment of aggression in emotionally disturbed children.
Psychiat. Quart., 1944, 18:667-673.
- WOLF, I.
Learning rate in relation to hostile drive strength and stimuli connoting
hostility. Unpublished doctor's dissertation, Boston Univ., 1954.
- WOLF, I.
Hostile acting out and Rorschach test content. J. proj. Tech., 1957.
- WOLF, S., CARDON, P. V., SHEPARD, E. M., & WOLFF, H. G.
Life Stress and Essential Hypertension. Baltimore: Williams & Wilkins, 1955.
- WOLF, S. & WOLFF, H. G.
A summary of experimental evidence relating life stress to the pathogenesis
of essential hypertension in man. In E. T. Bell (Ed.) Hypertension: A
Symposium, Minneapolis: Univ. of Minnesota Press, 1951.
- WOLFGANG, M. E.
Husband-wife homicide. J. Soc. Ther., Fourth Quarter, 1956, 2:263-271.
- WOLFGANG, M. E.
An analysis of homicide-suicide. J. Clin. Expt. Psychopath.,
July-September, 1958, 19:209-219, Biblio. (26 items).
- WOLFGANG, M. E.
Patterns in Criminal Homicide. Philadelphia: Univ. of Pennsylvania, 1958.
- WOLFGANG, M. E.
Suicide by means of victim-precipitated homicide. J. clin. exp.
Psychopathol. Quart. rev. psychiat. Neur., 1959, 4:20.
- WOLFGANG, M. E.
A sociological analysis of criminal homicide. Fed. Prob., 1961, 25:48-55.
- WOLFGANG, M. E. & STROHM, R. B.
The relationship between alcohol and criminal homicide. Quart. J. Stud.
Alcohol, September, 1956, 17:411-425, Biblio. (23 items).
- WOLIN, S. S.
Violence and the western political tradition. Amer. J. Orthopsychiat.,
1963, 33:15-28.
- WOOD, A. L.
A socio-structural analysis of murder, suicide, and economic crime in
Ceylon. Amer. Sociol. Rev., 1961, 26:744-753.
- WOODS, S. M.
Adolescent violence and homicide. Arch. Genet. Psychiat., December, 1961,
5:528-534, Biblio. (31 items). Report of 2 cases.

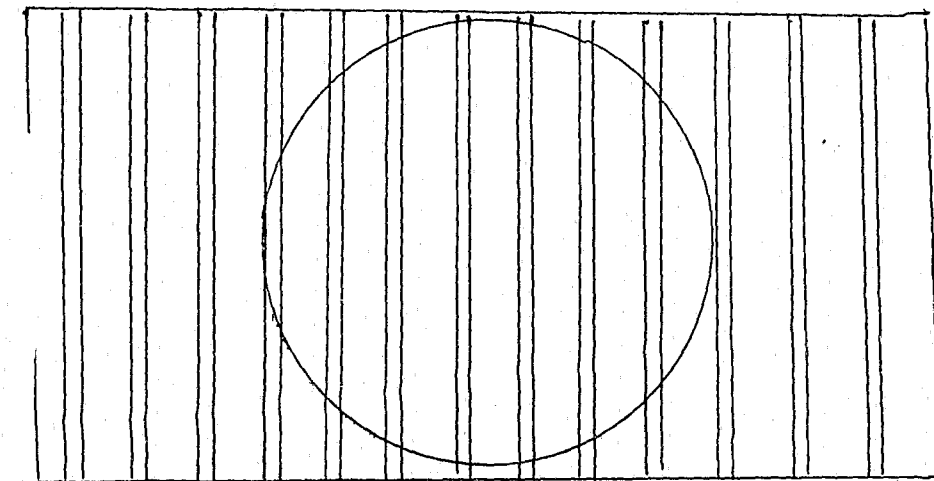
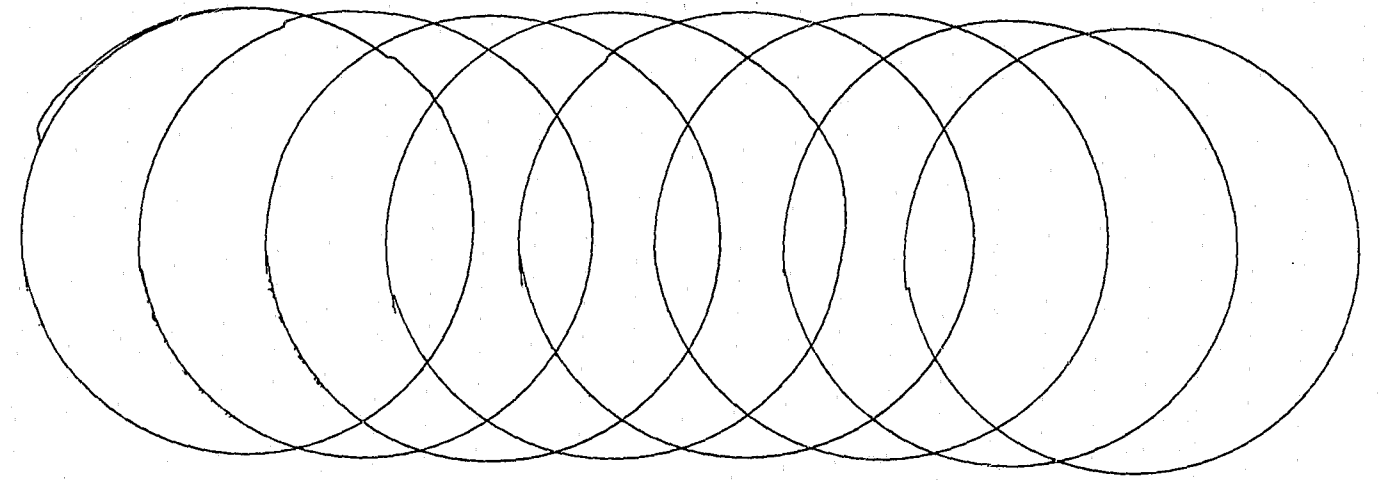
- WORCHEL, P.
Catharsis and the relief of hostility. J. abnorm. soc. Psychol.,
1957, 55:238-243.
- WORCHEL, P.
Personality factors in the readiness to express aggression.
J. clin. Psychol., 1958, 14:355-359.
- WORCHEL, P.
Hostility: Theory and experimental investigation. In C. D. Miller (Ed.)
Decisions, Values and Groups, Vol. 1, New York: Pergamon Press, 1960.
- WORCHEL, P.
Status restoration and the reduction of hostility. J. abnorm. soc. Psychol.,
1961, 63:443-445.
- WORCHEL, P.
The control of hostility in group training. Unpub. ms.
- WORCHEL, P. & HILLSON, J. S.
The self-concept in the criminal: An exploration of adlerian theory.
J. individ. Psychol., 1958, 14:173-181.
- WRIGHT, G. O.
Projection and displacement: A cross-cultural study of folktale
aggression. J. abnorm. soc. Psychol., 1954, 36:523-528.
- WRIGHT, M. E.
The influence of frustration upon the social relation of the young
children. Charac. & Pers., 1943, 12:111-122.
- WRIGHT, Q.
A Study of War. Chicago: Univ. of Chicago Press, 1942.
- WURTZ, K. R.
Some theory and data concerning the attenuation of aggression.
J. abnorm. soc. Psychol., 1960, 60:132-136.
- WYLIE, H., KAPLAN, S. M., GLESER, G. C., & GOTTSCHALK, L. A.
Effects of Imipramine on hostility and anxiety. Presented at 1st annual
conf. Amer. coll. Neuro-psychopharmacol. Washington, D. C., 1963.

"X-7-3"

- YABLONSKY, L.
The Violent Gang. New York: Macmillan, 1957.
- YABLONSKY, L.
The new criminal: A report on the "rip" killer. Saturday Review,
February 2, 1963, 46:54-56.
- YAKER, H. M.
The Black Muslim in the correctional institution.
Walf. Reporter, Trenton: 1961, 13:158-165.
- YARROW, J. L.
The effect of antecedent frustration on projective play.
Psychol. Monogr., 1958, 62, No. 283.
- YOUNG, P. T.
Emotion in Man and Animal. New York: Wiley, 1943.
- ZAJONC, R.
Aggressive attitudes of the stranger as a function of conformity
pressures. Hum. Relat., 1952, 5:205-216.
- ZAKS, M. S. & WALTERS, R. H.
First steps in the construction of a scale for the measurement of
aggression. J. Psychol., 1959, 47:199-208.
- ZANDER, A.
A study of experimental frustration. Psychol. Monogr., 1944, 56, No. 256.
- ZANDER, A.
Group membership and individual security. Hum. Relat., 1958, 11:99-111.
- ZAWADZKI, B.
Limitations of the scapegoat theory of prejudice. J. abnorm. soc.
Psychol., 1958, 43:127-141.
- ZEDEK, MEIRA E.
The conditioning of verbal behavior with negative cultural connotations.
J. Pers., 1959, 27:477-486.
- ZUCKERMAN, M.
The effect of frustration on the perception of neutral and aggressive
words. J. Pers., 1955, 23:407-422.

010 = CORRECTIONS

BIBLIOGRAPHY



011238

LAWRENCE E. CUMMINGS
UNIVERSITY OF GEORGIA
INSTITUTE OF GOVERNMENT
CORRECTIONS DIVISION

BIBLIOGRAPHY
CORRECTIONS

- I. Administration, Organization, Management, Decision Making, and Effectiveness
 - A. General
 - (1) articles
 - (2) books
 - B. Specific (Corrections)
 - (1) articles
 - (2) books
- II. Corrections: Probationers, Parolees, and Staff
 - A. Articles
 - B. Books
- III. Corrections: Staff Supervision, Training, and Special Interest Materials
 - A. Articles
 - B. Books
- IV. Bibliographies on Corrections
- V. Journal Availability

IA. Administration, Organization, Management, Decision Making, and Effectiveness

(1) General Articles

- Arnold, Stanley. "The Value of Creative Discontent," Personnel, XLIV (1967) 55-59.
- Cleveland, Harlan. "The New Style in Leadership," Public Administration Review, XXVI (1966) 206-209.
- Fosen, Robert H. "Common Sense and Correctional Science," Journal of Research in Crime and Delinquency, III(ii) (1966) 73-81.
- Freedman, Robert S. "Administrative Agencies and the Public They Serve," Public Administration Review, XXVI (1966) 192-204.
- Jackson, John W., and Gazda, T. J. "The Nature of Supervisory Effectiveness: A Factorial Study," Public Personnel Review (1964) 157-162.
- Katz, P. "The Motivational Basis of Organizational Behavior," Behavioral Science, IX (1964) 131-146.
- King, R. H. "The Practice of Total Corporate Planning," Research Management, XI (1968) 61-72.
- Miller, T. F. "How to Slow the Turnover Flow," Personnel Journal, XLVII (1968) 321, 322.
- Murphy, S. P. "Overcoming Supervisory Weaknesses," Personnel Journal, XLVII (1968) 312-314.
- Nagel, J. H. "Some Questions About the Concept of Power," Behavioral Science, XIII (1968) 36-43.
- "Personnel Management," Manual of Correctional Standards, American Correctional Association (1966) 171-189. (Revision of 1959 manual). Order from: ACA, Shoreham Building, 15th and H Streets, N. W., Washington, D. C. 20005.
- Rodney, T. C. "Can Money Motivate Better Job Performance?" Personnel Administration, XXX (1967) 29-32.
- Schaffer, Robert H. "Putting Action into Planning," Harvard Business Review, XLV (1967) 158-166.

Schoonmaker, A. N. "What to Emphasize in Motivating People," Public Relations Journal, February (1968) 18, 19.

Steiner, I. D. "Models for Inferring Relationships Between Group Size and Potential Group Productivity," Behavioral Science, XI (1966) 273-283.

Thompson, James D. "Authority and Power in 'Identical' Organizations," American Journal of Sociology, LXII (1958) 290-301.

Vogel, A. "Why Don't Employees Speak Up?" Personnel Administration, XXX (1962) 18-21.

Wrapp, H. Edwards. "Good Managers Don't Make Policy Decisions," Harvard Business Review, XLV (1967) 91-99.

IA. Administration, Organization, Management, Decision Making and Effectiveness

(2) General Books

Argyris, Chris. Personality and Organization: The Conflict Between System and the Individual. New York: Harper and Row, 1957.

Bennis, Warren. Changing Organization. New York: McGraw-Hill, 1966.

Caplow, Theodore. Principles of Organization. New York: Harcourt, Brace and World, 1964.

Cartwright, D., ed. Studies in Social Power. Ann Arbor: Institute for Group Dynamics, 1959.

Golembiewski, Robert T., ed. Public Administration: Readings in Institutions, Processes, and Behavior. Chicago: Rand McNally and Company, 1966.

Gross, Bertram. The Managing of Organizations: The Administrative Struggle. New York: The Free Press, 1964.

Miller, D. W. and Stan, M. K. The Structure of Human Decisions. Englewood Cliffs, New Jersey: Prentice-Hall, 1967.

Smith, A. G., ed. Communication and Culture. New York: Holt, Rinehart and Winston, 1966.

Thompson, James D. Approaches to Organizational Design. Pittsburgh: University of Pittsburgh Press, 1966.

Vickers, Geoffrey. The Art of Judgement: A Study in Policy Making. New York: Basic Books, 1966.

IB. Administration, Organization, Management, Decision Making and Effectiveness

(1) Specific Articles (Corrections)

Ackerson, John W. "Why a Correctional Public Relations Program?" American Journal of Correction, XXIX (1967) 4-6.

Adams, Stuart. "Some Findings From Correctional Research," Federal Probation, XXXI(iv) (1967) 48-57.

Braithwaite, John. "The Police in Corrections: Partnership or Conflict," Police, II(iii) (1967) 6-12.

"Correction in the U. S.: A Survey for the President's Commission of Law Enforcement and Administration of Justice," Crime and Delinquency, III(1) (1967) 1-281.

Coser, Lewis A. "Some Functions of Deviant Behavior and Normative Flexibility," American Journal of Sociology, LXVII (1964) 172-181.

Foots Whyte, William. "Models for Building and Changing Organizations," Human Organization, XXVI (1967) 22-31.

Geis, Gilbert, Cavanagh, and Elvin. "Recruitment and Retention of Correctional Personnel," Crime and Delinquency, XII(iii) (1966) 232-239.

Glaser, Daniel. "Differential Association Theory and Criminological Prediction," Social Problems, VII(1) (Summer, 1960).

Glaser, Daniel. "Prediction Tables as Accounting Devices for Judges and Parole Boards," Crime and Delinquency, VIII (iii) (July, 1962).

Gronewald, David H. "Supervision Practices in the Federal Probation System," Federal Probation, XXVIII(iii) (1964) 19-25.

Joyce, Vernon H. "Personnel Management Practices in State Correctional Institutions," American Journal of Corrections, XXIX(ii) (1967) 18-21.

Keve, Paul W. "A Director of Court Services Looks at the Court and its Staff," Juvenile Court Judges Journal, XVII(iii) (1966) 88-92.

Laningham, Dale E. et al. "How Adult Probation Officers View Their Job Responsibilities," Crime and Delinquency, XII(ii) (1966) 97-108.

Lee, Charles C. "The Concept of Authority in the Field of Probation," American Journal of Corrections, XXVII(ii) (1966) 26, 27.

Miles, Arthur P. "The Reality of the Probation Officer's Dilemma," Federal Probation, XXIX(1) (1965) 18-23.

Rubin, Sol. "Developments in Correctional Law," Crime and Delinquency, XII(ii) (1967) 356-366.

Smith, J. G. "Improving Sentencing Techniques," Probation, III(ii) (1963) 41-13.

IB. Administration, Organization, Management, Decision Making and Effectiveness

(2) Specific Books (Corrections)

Chute, Charles L. and Bell, M. Crime, Courts, and Probation. New York: MacMillan Company, 1956.

Clegg, Reed K. Probation and Parole. Springfield, Illinois: Charles C. Thomas Press, 1964.

Conrad, John. Crime and Correction: An International Survey of Attitudes and Practices. Los Angeles: University of California Press, 1965.

Cressey, Donald R., ed. The Prison: Studies in Institution Organization and Change. New York: Holt, Rinehart and Winston, 1961.

Dressler, David. Probation and Parole. New York: Columbia University Press, 1951.

Glaser, Daniel. The Effectiveness of a Prison and Parole System. New York: The Bobbs-Merrill Company, 1964.

Kay, Barbara and Vedder, C. B. Probation and Parole. Springfield, Illinois: Charles C. Thomas Press, 1963.

Keve, Paul W. Imaginative Programming in Probation and Parole. Minneapolis: University of Minnesota Press, 1967.

Keve, Paul W. Prison, Probation, or Parole? Minneapolis: University of Minnesota Press, 1954.

Lohman, Joseph D. "Classification Criteria for Establishing Caseload Models," (The San Francisco Project: Research Report No. 12).

Manual of Correctional Standards, (revision of 1959 manual). New York: American Correctional Association, 1966.
Order from: ACA, Shoreham Building, 15th and H Streets, N. W., Washington, D. C. 20005.

Newman, Charles L., ed. Sourcebook on Probation, Parole, and Pardons. Springfield, Illinois: Charles C. Thomas Press, 1968.

Reckless, Walter C. The Crime Problem. New York: Appleton Century-Crofts, 1967.

II. Corrections: Probationers, Parolees and Staff

A. Articles

Carter, Robert M. and Wilkins, Leslie T. "Some Factors in Sentencing Policy," Journal of Criminal Law, Criminology and Police Science, LVII(iv) (1967) 503-514.

Donnelly, T. L. "The Conflict Between Probation and the Right to Appeal in Kansas," University of Kansas Law Review, XV(iv) (1967) 569-581.

Felton, F. "Compulsion and Casework," Probation, III(i) (1967) 14-73.

Geis, Gilbert and Cavanagh, E. "Recruitment and Retention of Correctional Personnel," Crime and Delinquency, XII(iii) (1966) 232-239.

Gross, Seymour. "Biographical Characteristics of Juvenile Probation Officers," Crime and Delinquency, XII(ii) (1966) 109-116.

Ives, Jane. "The Essential Task of the Probation Officer," Federal Probation, (March, 1962) 38-43.

Muhlmeyer, Eleanor. "A Probation Officer Looks at His Job," Federal Probation, XXX(i) (1966) 5-10.

Nau, William. "A Day in the Life of a Federal Probation Officer," Federal Probation, XXXI(i) (1967) 17-21.

Nelson, Elmer K., Jr. "Community-Based Correctional Treatment: Rationale and Problems," Annals of the American Academy of Political and Social Science, CCCLXXIV (November, 1967) 82-91.

Oswald, Russell G. "Poverty and Parole," The Prison Journal XLV(i) (Spring-Summer, 1965) 36-43.

Scott, Robert E. "Bail Fact-Finding Project at San Francisco," Federal Probation, XXX(iv) (1966) 39-43.

Stanton, John M. "The Typical Parolee," American Journal of Corrections, (May/June, 1963) 12-17.

Stein, Philip. "A Probation Officer. . .hmm. . .What Do You Do?" Federal Probation, XXX(v) (1966) 27-30.

II. Corrections: Probationers, Parolees and Staff

B. Books

Dinitz, Simon, ed. Deviance: Studies in the Process of Stigmatization and Societal Reaction. New York: Oxford University Press, 1969.

Gibbons, Don C. Changing the Law Breaker. New Jersey: Prentice-Hall Inc., 1965.

Keve, Paul. Imaginative Programming in Probation and Parole. Minneapolis: University of Minnesota Press, 1967.

Lykke, Arthur. Parolees and Payrolls. Springfield, Illinois: Charles C. Thomas Publishers, 1957.

Parsloe, Phyllida. The Work of the Probation and After-Care Worker. New York: Humanities Press, 1967.

Stuct, Elliot. The Re-entry of the Offender Into the Community. Washington: U. S. Government Printing Office, 1969. (JD Publication No. 9002).

West, Donald J. The Young Offender. New York: International Universities Press, 1967.

Wies, Louis B. From the Probation Officer's Desk. New York: Exposition Press, 1965.

III. Corrections: Staff Supervision, Training, and Special Interest Materials

A. Articles

Cape, William H. "Second Annual Seminar on Probation and Parole," (Special Report No. 172), Government Research Center, University of Kansas, Lawrence, Kansas (1968).

Carter, R. M. and Takagi, Paul T. "Persistant Problems and Challenges in Correctional Supervision," Criminologica, V(111) (November, 1967).

Gronewald, David H. "Supervision Practices in the Federal Probation System," Federal Probation, XXVII(111) (1964) 19-25.

Hartman, Henry L. "Interviewing Techniques in Probation and Parole," Federal Probation (March, June, September and December, 1963). (Four part series).

Mayar, John J. "New Approaches in Probation Services," Juvenile Court Judges Journal, XVII(11) (1966) 57-61.

National Council on Crime and Delinquency, Case Training Materials (with guide), New York: NCCD.

Prigmore, Charles S. "Corrections Blueprint for National Action on Manpower and Training," Federal Probation, XXVIII(111) (1964) 25-30.

Taylor, E. M. and McEachern, A. W. "Needs and Directions in Probation Training," Federal Probation, XXX(1) (1966) 18-24.

Wallace, John A. "Using Different Levels of Training and Skill in a Probation Program for Youth and Families," Child Welfare, XL(1v) (1966) 209-13, 235.

III. Corrections: Staff Supervision, Training, and Special Interest Materials

B. Books

Cavan, Ruth, ed. Readings in Juvenile Delinquency. Philadelphia: T. B. Lippincott Co., 1964.

Cohen, Albert K. Deviance and Control, (Foundations of Modern Sociology Series, ed. Alex Inkeles). Englewood Cliffs, New Jersey: Prentice-Hall, Inc., 1966.

Craig, R. L. and Bittel, L. R. Training and Development Handbook. New York: McGraw Hill, 1967.

Hartung, Frank. Crime, Law and Society. Detroit: Wayne State University Press, 1965.

Jones, Howard. Crime in a Changing Society. Baltimore: Penguin Books, 1965.

Laurie, Peter. Drugs: Medical, Psychological and Social Facts. Baltimore: Penguin Books, 1967.

Maier, N. R. et al. Supervisory and Executive Development: A Manual for Role Playing. New York: Wiley and Sons, 1957.

Richmond, Mark. Prison Profiles. Dubbs Ferry, New York: Oceana Press, 1965.

Scheff, Thomas J. Being Mentally Ill: A Sociological Theory. Chicago: Aldene Publishing Co., 1966.

Slavson, S. R. Reclaiming the Delinquent. New York: Free Press, 1965.

Wilkins, Leslie T. Social Deviance: Social Policy, Action, and Research. Englewood Cliffs, New Jersey: Prentice-Hall Inc., 1965.

Yablonski, Lewis. Syanon: The Tunnel Back. Baltimore: Penguin Books, 1967.

IV. Bibliographies on Corrections

Cohn, Alvin W. et al. Management of Probation Services: A Bibliography. New York: National Council on Crime and Delinquency, 1968.

Crime and Delinquency Abstracts. Published quarterly by the National Institute of Mental Health. (See Section V - Journal Availability).

Crime and Delinquency Literature. New York: National Council on Crime and Delinquency. (See Section V - Journal Availability).

Gibson, Frank, et al. Literature on Parole. Athens, Georgia: University of Georgia Institute of Government, 1967.

Mendes, Richard H. P. Bibliography on Community Organization. U. S. President's Committee on Juvenile Delinquency and Youth Crime, 1965.

Selected Reading List - Delinquency and Crime. New York: National Council on Crime and Delinquency, 1969.

Thompkins, Dorothy C. Juvenile Gangs and Street Groups: A Bibliography. Berkley: Institute of Governmental Studies, University of California, 1966.

Thompkins, Dorothy C. Probation Since World War II: A Bibliography. Berkley: University of California Press, 1964.

V. Journal Availability

(Subscription rates listed are subject to change. Consult the most recent issue or write to the publisher).

Administrative Science Quarterly

Published quarterly
Address: Administrative Science Quarterly,
Graduate School of Business and Public Administration, Malott Hall,
Cornell University, Ithaca, New York 14850
Subscription: \$7.50 a year

American Journal of Correction

Published bi-monthly
Address: American Correctional Association,
2642 University Ave., Saint Paul, Minnesota 55114
Subscription: \$2.00 a year

American Sociological Review

Published bi-monthly
Address: Executive Office, American Sociological Association,
1001 Connecticut Avenue, N. W., Washington, D. C. 20036
Subscription: \$10.00 a year

Behavioral Science

Published bi-monthly
Address: Behavioral Science Mental Health Research Institute,
The University of Michigan, Ann Arbor, Michigan 48104
Subscription: \$10.00 a year

Children

Published bi-monthly
Address: U. S. Children's Bureau: Superintendent of Documents,
U. S. Government Printing Office, Washington, D. C. 20402
Subscription: \$1.25 a year

Correctional Research

Address: Massachusetts Correctional Association
33 Mt. Vernon Street
Boston, Massachusetts 02108
Subscription: Free, but membership encouraged

Crime and Delinquency

Published quarterly
Address: National Council on Crime and Delinquency,
44 E. 23rd Street, New York, New York 10010
Subscription: \$4.50 a year; single copy \$1.25 (included in \$5.00
membership, with 5 issues of NCCD NEWS).

Crime and Delinquency Abstracts

Published quarterly
Address: Crime and Delinquency Abstracts, National Clearing House
for Mental Health Information, National Institute of Mental Health,
5454 Wisconsin Avenue, Chevy Chase, Maryland 20203
Subscription: Free

Crime and Delinquency Literature

Published 6 issues per year
Address: National Council on Crime and Delinquency, 44 East 23rd
Street, New York, New York 10010
Subscription: \$10.00 a year

Criminologica

Published quarterly
Address: American Society of Criminology, Dept. of Sociology,
Catholic University of America, Washington, D. C. 20017
Subscription: with membership in society

Federal Probation

Published quarterly
Address: Administrative Office of the U. S. Courts,
Supreme Court Building, Washington, D. C. 20544
Subscription: Free

Georgia Juvenile Association Newsletter

Address: Mr. Richard Bryant
Corrections Division, Institute of Government,
University of Georgia, Athens, Georgia 30601
Subscription: \$5.00 a year

Human Relations

Published quarterly
Address: Plenum Publishing Corp., 227 West 17th Street,
New York, New York 10011
Subscription: \$12.00 a year

INSCAPE

Address: Southern Illinois University
Center for the Study of Crime, Delinquency and Corrections
Carbondale, Illinois 62901
Subscription: Free

Journal of Applied Behavioral Science

Published quarterly
Address: National Training Laboratories, NEA,
1201 16th Street, N. W., Washington, D. C. 20036
Subscription: \$6.50 a year

Journal of Criminal Law, Criminology, and Police Science
Published quarterly for the Northwestern University School of Law
Address: Williams and Wilkins Co., 428 E. Preston Street,
Baltimore, Maryland
Subscription: \$9.00 a year

Journal of Offender Therapy
Published 3 times a year
Address: Association for Psychiatric Treatment of Offenders,
Mr. H. Sharkey, MSW, 162-17 73rd Street, Flushing, New York 11366
Subscription: \$10.00 including membership in Association and Journal

The Journal of Social Issues
Published quarterly
Address: Mrs. Caroline Weichlein, SPSSI Executive Secretary,
P. O. Box 1248, Ann Arbor, Michigan
Subscription: \$5.00 a year; single copy, \$1.50.

Juvenile Court Judges Journal
Published quarterly
Address: National Council of Juvenile Court Judges, 1155 E. 60th
Street, Chicago, Illinois
Subscription: \$5.00 a year; single copy, \$1.50

Management Review
Published monthly
Address: Management Review, American Management Association
Building, 135 West 50th Street, New York, New York 10020
Subscription: \$7.50 a year

Personnel - The Management of People at Work
Published bi-monthly
Address: American Management Association,
135 W. 50th Street, New York, New York 10020
Subscription: \$10.00 a year

Personnel Administration
Published bi-monthly
Address: 1221 Connecticut Avenue, N. W., Washington, D. C. 20036

The Personnel Administrator
Published bi-monthly
Address: American Society for Personnel Administration,
52 East Bridge Street, Berea, Oklahoma
Subscription: \$8.00 a year

Personnel Journal
Published monthly
Address: Personnel Journal, 100 Park Avenue, Swarthmore, Penn-
sylvania 19081

Subscription: \$8.00 a year

Prison Journal
Published semi-annually
Address: Pennsylvania Prison Society, Room 302,
Social Service Building, 311 S. Juniper Street, Philadelphia 7,
Pennsylvania
Subscription: \$7.00 a year

Probation
Published quarterly
Address: National Association of Probation Officers,
6 Endaleigh Street, London, W. C. 1, England
Subscription: \$11.76 a year for probation officers aged 29 or over;
\$8.82 per year for officers under age 29

Public Administration Review
Published bi-monthly
Address: American Society for Public Administration,
1329 18th Street, N. W., Washington, D. C. 20036
Subscription: \$20.00

Social Casework
Published monthly
Address: Family Service Association of America,
44 E. 23rd Street, New York, New York 10010
Subscription: \$4.50 a year; single copy \$.60

Social Forces
Published quarterly
Address: The University of North Carolina Press,
P. O. Box 510, Chapel Hill, North Carolina 27514
Subscription: \$6.00 a year

Social Problems
Published quarterly
Address: Social Problems, Business Office, P. O. Box 190,
Kalamazoo, Michigan 49005
Subscription: \$5.00 a year

Social Work
Published quarterly
Address: National Association of Social Workers,
2 Park Avenue, New York, New York 10016
Subscription: \$6.00 a year; single copy \$1.75

Trans-Action
Published monthly
Address: Circulation Department, Trans-Action, P. O. Box
1043 A, Washington University, St. Louis, Missouri 63130

Youth Service News

Published quarterly

Address: New York State Executive Department,

Division for Youth, 2 University Place, Albany, New York 12208

Subscription: Free

END