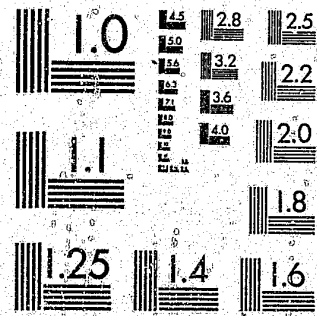


National Criminal Justice Reference Service



This microfiche was produced from documents received for inclusion in the NCJRS data base. Since NCJRS cannot exercise control over the physical condition of the documents submitted, the individual frame quality will vary. The resolution chart on this frame may be used to evaluate the document quality.



MICROCOPY RESOLUTION TEST CHART
NATIONAL BUREAU OF STANDARDS-1963-A

Microfilming procedures used to create this fiche comply with the standards set forth in 41CFR 101-11.504.

Points of view or opinions stated in this document are those of the author(s) and do not represent the official position or policies of the U. S. Department of Justice.

National Institute of Justice
United States Department of Justice
Washington, D. C. 20531

5-14-82

81243

CR sent
4-22-81

ANNUAL ARRESTS AND DISPOSITIONS REPORT

State of New Jersey
Department of Corrections
Division of Policy and Planning

BUREAU OF PAROLE

Whittlesey Road
P. O. Box 7387, Trenton, N. J. 08628

(July 1, 1978 - June 30, 1979)

U.S. Department of Justice 81243
National Institute of Justice

This document has been reproduced exactly as received from the person or organization originating it. Points of view or opinions stated in this document are those of the authors and do not necessarily represent the official position or policies of the National Institute of Justice.

Permission to reproduce this copyrighted material has been granted by
Victor R. D'Ilia, Asst. Chief
New Jersey Bureau of Parole
to the National Criminal Justice Reference Service (NCJRS).

Further reproduction outside of the NCJRS system requires permission of the copyright owner.

Fred B. Holley, Chief
Bureau of Parole

Victor R. D'Illo,
Assistant Chief

and
Donald Ide,
Senior Parole Officer



State of New Jersey
DEPARTMENT OF CORRECTIONS
WHITTLESEY ROAD
POST OFFICE BOX 7367
TRENTON, NEW JERSEY 08628

WILLIAM H. FAUVER
COMMISSIONER

RICHARD A. SEIDL
DEPUTY COMMISSIONER

August 3, 1981

United States Department of Justice
Acquisitions Department
Box 6000
Rockville, Maryland 20850

Dear Sir:

Attached are copies of the Annual Arrests and Dispositions Reports of the Bureau of Parole for the fiscal years ending June 30, 1978 and 1979.

Yours truly,

Fred B. Holley
Fred B. Holley, Chief
Bureau of Parole

FBH:cdw

Attachments

NCJRS

AUG 07 1981

ACQUISITIONS 13

81243

INTRODUCTION

The charts and discussion materials presented herein do not reflect information concerning those New Jersey cases supervised by out-of-state agencies. As explained in the fiscal '77 - '78 report, the Bureau of Interstate Services no longer provides the Bureau of Parole with data on the aforementioned cases for inclusion in this study. As a result, valid five year comparison of various statistics, traditionally reflected in Table No. 5, cannot be generated. Instead, meaningful comparisons can only be made between statistics dealing with the last two years, or the former three. In future reports, statistical data will present a three year, then a four year comparison until once again legitimate five year figures can be presented by information collected by Parole Bureau components alone.

ANNUAL ARRESTS AND DISPOSITIONS REPORT

The statistical information presented in this report is intended to serve as a factual indicator of the number, types, and dispositions of arrests of all parolees in New Jersey. We have no similar data on New Jersey parolees in other states who are no longer the responsibility of the New Jersey Bureau of Parole.

It is beyond the scope of this survey to answer questions about the reasons underlying the results.

Although all of the recorded arrests occurred during the period of July 1, 1978 through June 30, 1979, many were not completely adjudicated until after the close of the fiscal year. Accordingly, the report is prepared one year thereafter in order to record as many dispositions as possible.

These arrests, as reported solely by the nine district parole offices of the Bureau of Parole, resulted from violations of the conditions of parole (Technical Violations) and/or Municipal Ordinances, State or Federal Statutes (New Offenses).

The criterion for recording the data is similar to the Uniform Crime Reporting procedure, i.e. one person, one arrest, regardless of the number of charges lodged.

Specifically, the data in addition to identifying information includes:

- (1) Number of parolees arrested and the number of arrests.
- (2) Disposition of recorded arrests for new offenses.
- (3) Disposition of arrests for technical parole violations.
- (4) Age at time of arrest and length of time on parole when arrested.
- (5) Types of arrests.

As shown in Table #5 the Bureau was responsible for the supervision of 12,489 parolees in the fiscal year 1978-79. There was an average of 8,439 on parole at any given time during the year. (See Table #1)

Some conclusions derived from this report may be stated as follows:

- (1) The number of total arrests for juvenile delinquency rose 25.8% in fiscal 1979 over those arrested for the same offense in fiscal 1978. (Table #5)
- (2) When compared with fiscal '78, the number of arrests for parole violation increased only by two or .7%. (Table #5)
- (3) During the same period of time there has been no significant change in the numbers of arrests for violation of local ordinances, motor vehicle laws or as material witnesses. (Table #5)
- (4) Disorderly persons arrests have shown a significant decrease (12.9%) during the period of study as compared with the previous year. (Table #5)
- (5) In both years compared herein (fiscal '78 and fiscal '79), approximately 1/3 of individuals supervised were arrested notwithstanding some change in caseload size or in total number of arrests. (Table #5)
- (6) Approximately three quarters (72%) of the individuals arrested were 21 years of age and over. (Table #4)
- (7) Fifty-nine per cent (59%) of all arrests occurred within the first year on parole, 74% within 18 months and 93% within three years on parole. (Table #4)
- (8) Thirty-seven per cent (37%) of all recorded arrests for New Offenses were disposed of as guilty by court action as compared to the dismissal rate of 14%; the remaining 49% of arrests were not processed for inclusion in the above figures because:
 - a) the disposition was still pending in court.
 - b) maximum sentence expired while awaiting disposition.
 - c) returned as parole violator before disposition was rendered. (Table #2)

- (9) A total of 3,275 individuals accounted for all of the 5,004 arrests. (Table #1)
- (10) Sixty-six per cent (189) of the 287 arrests for Technical Parole Violations resulted in return to the institution as parole violators. (Table #3)
- (11) Only 3.8% (189) of the total number of arrests (5,004) were returned to the institution for violating technical conditions of parole not requiring court action. (See note and Table #3)
- (12) Of the 4,717 arrests for New Offenses requiring court action 11.1% (527) resulted in a court commitment to a penal or correctional institution. (See note and Table #2)

It must be remembered that factors which influence the number of violators that are returned to institutions vary. Therefore, statistical comparisons between institutions should be made with caution.

Note: The percentage of those committed by the court as compared to those returned exclusively for technical reasons differs substantially, mainly because the screening process employed by the Bureau of Parole eliminates many cases that would otherwise be included in statistical arrests. Not all cases that were reviewed for parole violations resulted in an arrest as is the case with those brought before the court. The Bureau does not keep separate statistics for this, but a conservative estimate would be a figure as high if not higher than the number of cases that are brought to the attention of the court.

Parole violators are arrested only after a thorough review of the case is made by supervisory personnel. All of the cases so reviewed do not result in return. The probable cause hearing process cuts down the figure more and after the hearing the figure is reduced again by the action of the paroling authority who elect not to revoke.

When the overall violation rate is compared to the total number of cases under supervision by the Bureau, the percentage of return is substantially less. As an example, of all the individuals arrested 58% were returned to various institutions by order of a court commitment or as a result of technical violation of parole as compared to 22% of the average number on parole or 15% of the total supervised. Stated conversely, 85% of the total number of cases under supervision were "successful," i.e. were not returned to an institution. Consequently, the recidivism rate becomes more meaningful when the basis used is clearly defined.

The statistics compare favorably with those issued by the National Uniform Parole Reports.

TABLE #1

CASELOAD - ARRESTS AND RETURNED VIOLATORS
(By Institutions*)

7-1-78 thru 6-30-79

INSTITUTIONS*	UNDER SUPERVISION 7/1/78	UNDER SUPERVISION 7/1/79	TOTAL NO. SUPERVISED 1978-1979	AVERAGE NUMBER ON PAROLE	NO. PAROLEES ARRESTED			NO. OF ARRESTS			COMMITTED TO INSTITUTION**		
					NEW OFFENSES	TECHNICAL VIOLATIONS	TOTAL	NEW OFFENSES	TECHNICAL VIOLATIONS	TOTAL	BY COURT	PAROLING AUTHORITY	TOTAL
TSG	17	25	39	26	7	-	7	7	-	7	2	-	2
CIW	295	328	475	330	88	26	114	130	21	151	8	32	40
OS/F	24	20	37	21	2	1	3	2	1	3	-	2	2
TSB	218	200	390	209	244	57	301	283	11	294	57	70	127
YCIA	1,620	1,540	2,448	1,531	694	55	749	1,355	55	1,410	138	392	530
YCIB	1,749	1,733	2,479	1,652	622	51	673	977	72	1,049	115	290	405
YRCC	1,348	1,342	2,008	1,274	594	45	639	917	67	984	95	310	405
SP	2,314	3,081	3,838	2,901	654	58	712	912	59	971	100	255	355
ADTC	36	57	54	41	1	-	1	-	-	1	-	1	1
OS/M	433	452	721	454	72	4	76	116	18	134	12	17	29
TOTALS	8,054	8,778	12,489	8,439	2,978	297	3,275	4,700	304	5,004	527	1,369	1,896

*Legend -

TSG - Training School for Girls
 CIW - Correctional Institution for Women
 OS/F - Female parolees supervised for other states
 TSB - Training School for Boys
 YCIA - Youth Correctional Institution, Annandale
 YCIB - Youth Correctional Institution, Bordentown
 YRCC - Youth Reception and Correction Center
 SP - State Prison
 ADTC - Adult Diagnostic and Treatment Center
 OS/M - Male parolees supervised for other states

**Based on No. of Arrests: Figure does not include all those individuals revoked by the State Parole Board but not as yet returned to Prison Complex, rather remaining in county facilities.

TABLE #2

DISPOSITION OF RECORDED ARRESTS FOR NEW OFFENSES
(By Institutions*)

7-1-78 thru 6-30-79

		TSG	CIW	TSB	YCIA	YCIB	YRCC	SP	ADTC	O/S MALE	O/S FEMALE	TOTAL
<i>Adjudged guilty or delinquent by court action</i>	Committed to penal or correctional institution	2	8	57	138	115	95	100	0	12	0	527
	Suspended sentence or fined as parole violator (returned)	0	2	3	19	10	14	17	0	1	0	66
	Suspended sentence or fined, and continued under supervision	1	22	19	175	137	142	105	0	20	0	621
	Served county jail sentence, and returned as parole violator	0	5	4	21	11	18	13	0	0	0	72
	Served county jail sentence, and continued under supervision	0	12	5	117	66	54	41	0	2	0	297
	Placed on probation, and returned as parole violator	0	0	0	0	3	3	0	0	0	0	6
	Placed on probation, and continued under supervision	0	6	18	49	29	18	7	0	1	0	128
	Returned for adjustment	0	0	1	0	0	0	0	0	0	0	1
37%	Maximum expired while serving county jail sentence	1	1	2	3	0	1	3	0	1	0	12
	TOTAL	4	56	109	522	371	345	286	0	37	0	1,730
<i>Dismissed by court action</i>	Continued under supervision	3	16	53	166	138	98	129	0	20	0	623
	Returned as parole violator	0	0	5	11	9	8	9	0	0	0	42
	TOTAL	3	16	58	177	147	106	138	0	20	0	665
<i>Miscel- laneous</i>	Disposition still pending	0	21	40	200	183	165	198	0	34	0	841
	Maximum expired while awaiting disposition	0	14	21	103	31	50	61	0	19	0	299
	Returned as parole violator awaiting disposition	0	25	57	341	257	267	216	1	16	2	1,182
	TOTAL	0	60	118	644	471	482	475	1	69	2	2,322
	GRAND TOTAL	7	132	285	1,343	989	933	899	1	126	2	4,717

*Legend -

- TSG - Training School for Girls
- CIW - Correctional Institution for Women
- TSB - Training School for Boys
- YCIA - Youth Correctional Institution, Annandale
- YCIB - Youth Correctional Institution, Bordentown
- YRCC - Youth Reception and Correction Center
- SP - State Prison
- ADTC - Adult Diagnostic and Treatment Center
- O/S MALE - Male parolees supervised for other states
- O/S FEMALE - Female parolees supervised for other states

TABLE #3

DISPOSITION OF ARRESTS FOR TECHNICAL PAROLE VIOLATIONS
(By Institutions*)

7-1-78 thru 6-30-79

	TSG	CIW	TSB	YCIA	YCIB	YRCC	SP	ADTC	O/S MALE	O/S FEMALE	TOTAL
Returned as parole violator	0	11	8	47	39	35	44	0	4	1	189
Returned for adjustment	0	0	0	0	2	0	0	0	0	0	2
Released and continued under supervision	0	7	1	18	15	11	20	0	4	0	76
Turned over to police for new offense	0	0	0	1	1	0	1	0	0	0	3
Disposition pending	0	1	0	1	3	5	7	0	0	0	17
TOTAL	0	19	9	67	60	51	72	0	8	1	287

*Legend

- TSG - Training School for Girls
- CIW - Correctional Institution for Women
- TSB - Training School for Boys
- YCIA - Youth Correctional Institution, Annandale
- YCIB - Youth Correctional Institution, Bordentown
- YRCC - Youth Reception and Correction Center
- SP - State Prison
- ADTC - Adult Diagnostic and Treatment Center
- O/S Male - Male parolees supervised for other states
- O/S Female - Female parolees supervised for other states

TABLE #4

AGE AT TIME OF ARREST AND LENGTH ON PAROLE WHEN ARRESTED

7-4-78 thru 6-30-79

	AGE - (YEARS)					LENGTH OF TIME													
	15	16-17	18-20	21 and OVER	TOTAL ARRESTS	1 Week	2 Wks.	3 Wks.	1-3 Mos.	4-6 Mos.	7-12 Mos.	13-18 Mos.	19-24 Mos.	3rd Year	4th Year	5th Year	OVER 5 Years	TOTAL ARRESTS	
Training School for Girls	1	3	1	2	7	0	0	0	1	1	5	0	0	0	0	0	0	7	
Correctional Institution for Women	0	2	8	141	151	1	2	0	19	23	45	28	12	16	2	1	2	151	
Training School for Boys	12	186	87	9	294	2	2	1	64	61	96	37	14	12	4	1	0	294	
Youth Correctional Inst., Annandale	2	80	575	753	1410	14	8	6	241	219	332	235	138	138	62	12	5	1410	
Youth Correctional Inst., Bordentown	0	0	40	1009	1049	10	4	5	129	161	189	166	137	130	77	24	17	1049	
Youth Reception / Correction Center	1	61	308	614	984	10	11	6	122	163	210	159	114	96	51	26	16	984	
State Prison	0	1	15	955	971	12	3	4	174	194	287	127	52	56	24	17	21	971	
Adult Diagnostic and Treatment Ctr.	0	0	0	1	1	0	0	0	0	0	0	0	0	0	0	0	1	1	
Male (out-of-state)	0	7	13	114	134	0	1	0	17	16	46	20	10	7	4	3	10	134	
Female (out-of-state)	0	0	0	3	3	0	0	0	0	1	0	0	0	2	0	0	0	3	
TOTALS	16	340	1047	3601	5004	49	31	22	767	839	1210	772	477	457	224	84	72	5004	
	1%	6%	21%	72%		1%	1%	1%	15%	17%	24%	15%	10%	9%	4%	2%	1%		
1 Week						1%													
2 Weeks							2%												
3 Weeks								3%											
1-3 Mos.									18%										
4-6 Mos.										35%									
7-12 Mos.											59%								
13-18 Mos.												74%							
19-24 Mos.													84%						
2 Years														93%					

(Cumulative)

TABLE #5

5 YEAR COMPARISON (1974 - 1979)

7-1-78 thru 6-30-79

FISCAL YEAR	CASELOAD		INDIVIDUALS ARRESTED			TOTAL ARRESTS		RECOMMITMENTS OF RETURNS RESULTING FROM ARRESTS	
	NUMBER OF INDIVIDUALS SUPERVISED	% OF DIFFERENTIAL	NUMBER	% OF NUMBER SUPERVISED	% OF DIFFERENTIAL	NUMBER	% OF DIFFERENTIAL	NUMBER	% OF DIFFERENTIAL
1978 - 1979	12,489	-2.1	3,275	26.2	+8.6	5,004	-2.1	1,896	+3.3
1977 - 1978	12,753	*	3,015	23.6	*	5,112	*	1,835	*
1976 - 1977	12,489	+0.5	4,422	35.4	+12.6	6,221	-14.8	2,179	-17.6
1975 - 1976	12,421	-4.9	3,927	31.6	-10.2	7,298	-10.2	2,646	-13.9
1974 - 1975	13,061	-4.0	4,374	33.4	+0.9	8,112	+6.3	3,076	+12.8

FISCAL YEAR	ARRESTS FOR INDICTABLE OFFENSES		ARRESTS FOR JUV. DELINQUENCY		ARRESTS UNDER DIS. PERSONS STATUTE		ARRESTS FOR MOTOR VEHICLE VIOLATIONS		ARRESTS UNDER LOCAL ORDINANCES		ARRESTS AS MATERIAL WITNESSES		ARRESTS FOR TECH. VIOLATIONS	
	NUMBER OF ARRESTS	% OF TOTAL ARRESTS	NUMBER OF ARRESTS	% OF TOTAL ARRESTS	NUMBER OF ARRESTS	% OF TOTAL ARRESTS	NUMBER OF ARRESTS	% OF TOTAL ARRESTS	NUMBER OF ARRESTS	% OF TOTAL ARRESTS	NUMBER OF ARRESTS	% OF TOTAL ARRESTS	NUMBER OF ARRESTS	% OF TOTAL ARRESTS
1978 - 1979	2,786	55.7	327	6.5	1,366	27.2	154	3.0	80	1.5	4	0.4	287	5.7
1977 - 1978	2,755	53.8	260	5.1	1,568	30.7	156	3.1	82	1.6	6	0.1	285	5.6
1976 - 1977	3,385	54.4	328	5.2	1,852	29.7	205	3.3	118	1.8	4	.06	329	5.2
1975 - 1976	3,901	53.4	367	5.0	2,200	30.1	261	3.6	145	1.9	9	0.1	415	5.6
1974 - 1975	4,350	53.6	600	7.4	2,352	28.9	292	3.6	122	1.5	11	0.1	384	4.7
2 Year Differential	-1.1%		+25.8%		-12.9%		-1.0%		-2.4%		-33%		+ .7%	

*Although five (5) year figures are presented, no attempt should be made to compare 1978-1979 figures with other than 1977-1978 figures (See Introduction). The comparisons of the '78-'79 figures with the '77-'78 figures are made above and recorded in the block labeled "2 Year Differential".

END