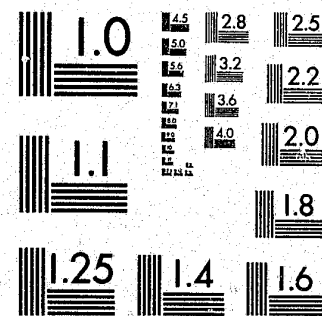


National Criminal Justice Reference Service

**ncjrs**

This microfiche was produced from documents received for inclusion in the NCJRS data base. Since NCJRS cannot exercise control over the physical condition of the documents submitted, the individual frame quality will vary. The resolution chart on this frame may be used to evaluate the document quality.



MICROCOPY RESOLUTION TEST CHART  
NATIONAL BUREAU OF STANDARDS-1963-A

Microfilming procedures used to create this fiche comply with the standards set forth in 41CFR 101-11.504.

Points of view or opinions stated in this document are those of the author(s) and do not represent the official position or policies of the U. S. Department of Justice.

National Institute of Justice  
United States Department of Justice  
Washington, D. C. 20531

7-6-82

*Consent*

# Statistical Presentation 1980

POLICY DEVELOPMENT DIVISION  
RESEARCH AND EVALUATION

82038

**ILLINOIS DEPARTMENT OF CORRECTIONS**

**MICHAEL P. LANE  
DIRECTOR**

**1980 STATISTICAL PRESENTATION**

**BUREAU OF POLICY DEVELOPMENT**

**Laurel L. Rans  
Deputy Director**

**Research and Evaluation  
Linda Adams**

**Distributed October, 1981**

**U.S. Department of Justice  
National Institute of Justice**

**82038**

This document has been reproduced exactly as received from the person or organization originating it. Points of view or opinions stated in this document are those of the authors and do not necessarily represent the official position or policies of the National Institute of Justice.

Permission to reproduce this copyrighted material has been granted by

Laurel L. Rans  
Illinois Dept. of Corrections  
to the National Criminal Justice Reference Service (NCJRS).

Further reproduction outside of the NCJRS system requires permission of the copyright owner.

NCJRS

ACQUISITIONS

## FOREWORD

This document is published in compliance with the *Unified Code of Corrections* (Illinois Criminal Law and Procedure for 1980, Chapter 38, Section 1005-5-4.3). Copies are available from Illinois Department of Corrections, Bureau of Policy Development, 1301 Concordia Court, Springfield, Illinois 62702.



## ACKNOWLEDGEMENTS

The data for this report are derived primarily from analysis of Illinois Department of Corrections computerized offender records. These records are maintained by the Information Services Unit (ISU) of the Bureau of Policy Development. ISU prepared data tapes from the Corrections Information System (CIS) and provided technical assistance in reading and translating the tapes. Staff providing assistance were Martin Lewis, Willard Wierfeldt, Roger Mollett, and Linda Brown.

This report could not have been completed without the on-going guidance and assistance from John Henning, Manager, Research and Evaluation. Dr. Henning's years of experience with the offender information system and expertise in statistical methods were an invaluable resource throughout. Yo-Ying Chen, also from Research and Evaluation, prepared data files for the analysis of length of stay. Tom Engelman with Information Services provided technical assistance in building files and programs to do the analysis on sentences imposed.

The information provided under the final section of this report was drawn largely from data prepared by J. William Gilbert of the Planning Unit for the *HUMAN SERVICES PLAN, 1981*. Thanks to the numerous research assistants and students who collated data, transposed numbers, and proofread charts and tables.

The cover design is by Cathy Dodge of Illinois Information Services. Production of this document must be attributed to the outstanding efforts of two support staff from the Department's Word Processing Center, Karen Wheeler and Marcha Smith. For the second year, they have spent countless hours typing and preparing charts. The task of printing was accomplished with expert proficiency by George Curry of the Corrections Training Academy. A special thanks to Regina Cain for proofreading and coordinating the production of this report.

## TABLE OF CONTENTS

Foreword .....	i
Acknowledgements .....	ii
Introduction .....	1
Sentence Imposed .....	3
Average Sentence Imposed for Indeterminate Cases by Offense, 1976-1980 (Table 1) .....	9
Average Sentence Imposed for Indeterminate Cases by Offense and County, 1976-1980 (Table 2) .....	12
Average Sentence Imposed for Determinate Cases by Offense, 1978-1980 (Table 3) .....	16
Average Sentence Imposed for Determinate Cases by Offense and County, 1978-1980 (Table 4) .....	18
Average Sentence Imposed for Determinate Cases by Offense and Race, 1978-1980 (Table 5) .....	21
Percentage of Extended Terms Imposed for Determinate Cases by Offense, 1978-1980 (Table 6) .....	24
Average Sentence Imposed for Misdemeanor Cases, 1976-1980 (Table 7) .....	26
Average Sentence Imposed for Misdemeanor Cases by Offense (Table 8) .....	27
Determinate Sentences Imposed for All Offenses (Figure A) .....	28
Determinate Sentences Imposed, 1978-1980 (Table 9) .....	29
Determinate Sentences Imposed by County, 1978-1980 (Table 10) .....	29
Determinate Sentences Imposed for Murder, (Figure B) .....	30
Determinate Sentences Imposed for Murder, 1978-1980 (Table 11) .....	31
Determinate Sentences Imposed for Murder by County, 1978-1980 (Table 12) .....	31
Determinate Sentences Imposed for Armed Robbery (Figure C) .....	32
Determinate Sentences Imposed for Armed Robbery, 1978-1980 (Table 13) .....	33
Determinate Sentences Imposed for Armed Robbery by County, 1978-1980 (Table 14) .....	33
Determinate Sentences Imposed for Rape (Figure D) .....	34
Determinate Sentences Imposed for Rape, 1978-1980 (Table 15) .....	35

## TABLE OF CONTENTS (Continued)

Determinate Sentences Imposed for Rape by County, 1978-1980 (Table 16) .....	35
Determinate Sentences Imposed for Robbery (Figure E) .....	36
Determinate Sentences Imposed for Robbery, 1978-1980 (Table 17) .....	37
Determinate Sentences Imposed for Robbery by County, 1978-1980 (Table 18) .....	37
Determinate Sentences Imposed for Burglary (Figure F) .....	38
Determinate Sentences Imposed for Burglary, 1978-1980 (Table 19) .....	39
Determinate Sentences Imposed for Burglary by County, 1978-1980 (Table 20) .....	39
Determinate Sentences Imposed for Aggravated Battery (Figure G) .....	40
Determinate Sentences Imposed for Aggravated Battery, 1978-1980 (Table 21) .....	41
Determinate Sentences Imposed for Aggravated Battery by County, 1978-1980 (Table 22) .....	41
Determinate Sentences Imposed for Theft (Figure H) .....	42
Determinate Sentences Imposed for Theft, 1978-1980 (Table 23) .....	43
Determinate Sentences Imposed for Theft by County, 1978-1980 (Table 24) .....	43
<b>Length of Stay</b> .....	45
Average Length of Stay for Adult Felons (Figure I) .....	49
Length of Stay for Adult Felons, 1976-1980 (Table 25) .....	50
Length of Stay for Adult Felons by County, 1976-1980 (Table 26) .....	50
Length of Stay for Adult Felons by Offense, 1976-1980 (Table 27) .....	51
Average Length of Stay for Indeterminate Cases (Figure J) .....	55
Length of Stay for Indeterminate Cases, 1976-1980 (Table 28) .....	56
Length of Stay for Indeterminate Cases by County, 1976-1980 (Table 29) .....	56
Length of Stay for Indeterminate Cases by Offense, 1976-1980 (Table 30) .....	57
Length of Stay for Determinate Cases, 1978-1980 (Table 31) .....	61

## TABLE OF CONTENTS (Continued)

Length of Stay for Determinate Cases Released in 1980 by Selected Offenses (Table 32) .....	61
Length of Stay for Misdemeanor Cases, 1976-1980 (Table 33) .....	62
<b>Sentencing Impact Consideration</b> .....	63
Illinois Arrest Rates, 1972-1980 (Table 34) .....	69
Disposition of Defendants Charged with Felonies (Table 35) .....	69
Types of Sentences Imposed on Defendants Charged with Felonies, 1973-1980 (Table 36) .....	69
Total Admissions and Readmissions to IDOC: 1965-1980 (Figure K) .....	70
IDOC Felony Commitments from Court: 1965-1980 (Figure L) .....	71
IDOC Misdemeanor Admissions: 1965-1980 (Figure M) .....	72
Intake Distribution of Offense Cases by Class, 1976-1980 (Table 37) .....	73
Intake Distribution of Highest Offense by Class, 1976-1980 (Table 38) .....	73
Comparison of Indeterminate Length of Stay with Estimated Determinate Length of Stay (Table 39) .....	74
Percentage of Class X Offenders in Prison Population, 1976-1980 (Table 40) .....	74
Illinois Sentencing Practices Comparison: Indeterminate/Determinate (Table 41) .....	75

## INTRODUCTION

This is the second annual *Statistical Presentation* to be completed by the Illinois Department of Corrections. This document is prepared pursuant to statutory requirements. The first two sections report sentence imposed and length of stay by offense for 1976-1980. The third and final section is a consideration of sentencing impact. Tables and charts under the first two sections are explained at the beginning of each section. This presentation, though similar in format, departs from the first year report in content. The section on sentencing impact has been added this year while tables and charts on court disposition, adult population and fiscal data have now been eliminated. The latter, not a statutory requirement in the Presentation, are reported thoroughly in another document by the Department, *The Illinois Human Services Data Report, Population and Capacity, Volume III, Part I—Section 1, Fiscal Year 1982*.

### Source of Data

The primary source of data for *Statistical Presentation 1980* is the Corrections Information System (CIS), the computerized inmate data files maintained by the Department's Information Services Unit. The Department plans by the end of FY82 to convert to a new offender information processing system Correctional Institution Management Information System (CIMIS), which will eventually replace CIS.

For this analysis, a data tape was prepared on selected data "elements" for all adult offenders either sentenced to or released from prison. Though a considerable improvement over the first data tape, there are still many aspects of the Corrections Information System and preparation of the tape which lead to limitations of the data in this report. A detailed explanation of these limitations and a description of the more severe constraints are provided below and in each section as it relates to specific tables or charts.

Every effort is being made in the design of the new offender information system to eliminate the problems that have characterized CIS for several years. Particular attention is being devoted to making the new system more responsive to user needs. Future statistical reports will be less inhibited by the constraints discussed below, once the offender data reside in CIMIS.

### Limitation and Constraints on the Data

Rather than build on last years tape, a special new data tape was created from CIS with additional specifications. Many previous problems were overcome. Additional programming efforts enabled access to historical offender data tapes and other off-line files previously untapped. This access, and a carefully constructed process of linking old commitment and current commitment for each case, resulted in a greatly expanded number of cases available for analysis on both sentenced and released offenders. Also, the 1980 tape was prepared mid-January 1981, to allow for any delay in data entry, thus including cases sentenced or released throughout the entire 1980 year.

## INTRODUCTION

For this year's report, "sentence date" rather than "admit date" was searched in the CIS file and used to build the cases on which to report sentence imposed. Date of sentencing is a more reliable element on which to select cases, but it can not be treated synonymous with cases admitted to the Department.

In terms of drawing release cases from CIS, the problems documented in last year's report remains. There is no such element as "date of release from prison". Again, a representative substitute date was constructed by searching the "status date". The status date is the effective date of a change in status code. The later is supposed to track a resident's movement through the system. The codes for this element are complex. Several codes refer to some type of release from prison but were not used since they have not been entered consistently into CIS.

Considerable additional effort was made to overcome this constraint. This was accomplished through the previously described access to historical and off-line data and by using a more complex screening of status codes. The result is a much closer approximation of the actual number of offenders released from prison.

Despite the significant improvements in procedures for drawing the cases, there remains a discrepancy between the manual records and the number of cases included on the data tape. The discrepancy on release cases was noticeably reduced from last year where there was a 48 percent variance. Comparing the 1980 tape for releases, the variance between the manual records and the data tape for the period 1976—1980 was 35 percent.

While recognizing that limitations still exist as described above, and more specifically in the later sections of this report, it is with greater confidence that data are presented this year. There is every reason to expect that, with the conversion to CIMIS and adequate resources for maintenance, there will continue to be improvements in subsequent years.

## SENTENCE IMPOSED

In order to facilitate analysis and better represent sentence length, a special data file was created. This was accomplished by taking each of the offender cases (sentenced in 1976-1980) from the data tape and building a separate record for each of the offenses for which the offender had been sentenced. Consequently, in all of the tables under this section, "cases" refer to offense cases not offender cases. Presentation of data in this manner allows a clearer understanding of sentences imposed for all occurrence of offense. The other method of reporting by offender cases would have captured only the sentence imposed for one offense and would have included some judgment about which offense to report. The difference in methods of reporting is the essential reason the number of cases in this report will not correspond to cases reported in the 1979 statistical document.

Tables included in this section describe the average, range, and distribution of sentence imposed by offense for the years 1976-1980. The offenses shown in the tables were selected for reporting because they are the highest occurrence. The length of sentence imposed is given for indeterminate, determinate, and misdemeanor cases. Determinate sentencing became effective February 1, 1978. Thus data on determinate sentences are presented for only 1978-1980. Cases listed for a particular year in all tables on sentence imposed refer to offenders sentenced to the Department in that year (not necessarily admitted).

The notation behind each offense heading refers to the class in which that offense is categorized in the Illinois Criminal Sentencing Code. For the purpose of comparison, all offenses (even the indeterminate offenses) have been converted to the new offense categories enacted with determinate sentencing. The statutory sentence range for misdemeanor cases is from 1 to 364 days. The Department does not accept misdemeanants with sentences of less than 60 days unless they also have a felony commitment. Misdemeanant sentences of 364 days will appear as 1 year on the tables due to computer rounding. Indeterminates range from a 1 year minimum to a maximum of at least 1 year and 1 day to an unspecified upper limit. Determinate sentences are a designated fixed sentence from a range statutorily set according to the class category for each offense. Under determinate sentencing, murder carries anywhere from 20-40 years or a natural life sentence. (Illinois also has a death penalty for a murder meeting specified conditions.) Class X sentence range is 6-30 years; Class 1 Felony is 4-15 years; Class 2 Felony is 3-7 years; Class 3 Felony is 2-5 years; Class 4 Felony is 1-3 years. Determinate sentencing allows imposition of extended terms up to twice the higher limit for each class depending upon consideration of aggravated circumstances.

In all the tables under this section where data are compared by county, it is the county in which the offender was sentenced for that offense which is reported. Cook includes only Cook County. All other counties are grouped as "Other Counties". Where data are compared by race, only two categories are used "Whites" and "Non-Whites". Designation of race is self-reported.



SENTENCE IMPOSED

- **Table 1. Average Sentence Imposed for Indeterminate Cases by Offense, 1976-1980.** Table 1 shows the average sentence imposed for indeterminate offense cases in the years listed by offense. The average minimum and maximum sentence imposed is given for each aggregate group of offense cases, i.e., cases sentenced in the same year. Also provided is the range of sentence imposed with the lowest minimum sentence and the highest maximum sentence of any offense cases in that aggregate group. All cases with life, death, and indefinite sentences are removed from the computations on average sentence imposed.  
  
It is important to note the substantial drop in the number of cases listed in the years 1979 and 1980 under each of the offenses. This drastic reduction represents the inception of determinate sentencing in 1978 and its increasing use in 1979 and 1980. An average is a very basic and useful statistical measure. However, it is vulnerable to unique high or low values when computing for a small number of cases. Therefore, in terms of assessing a trend in sentencing from this table, one should reference only the years 1976-1978.
- **Table 2. Average Sentence Imposed for Indeterminate Cases by Offense and County, 1976-1980.** The explanation for Table 1 serves also as a description of this table. Additionally, Table 2 breaks data out by county. Cook County data are compared to data from all Other Counties grouped together.
- **Table 3. Average Sentence Imposed for Determinate Cases by Offense, 1978-1980.** Table 3 shows the average sentence imposed for determinate cases. A determinate sentence is a fixed time sentence as compared to the minimum-maximum range under indeterminate sentencing. Thus only one column for average sentence is required to report the data. Also provided is the range of sentences imposed with the shortest sentence and the longest sentence of any offense case in that aggregate group.
- **Table 4. Average Sentence Imposed for Determinate Cases by Offense and County, 1978-1980.** Data from the preceding table are compared for Cook and Other Counties in Table 4. Discrepancies in totals between the two tables is attributed to cases which are dropped because county is not reported.
- **Table 5. Average Sentence Imposed for Determinate Cases by Offense and Race, 1978-1980.** Data from Table 3 are compared by race in Table 5. Any discrepancy in totals between the two tables can be attributed to cases being dropped because race was not reported.

SENTENCE IMPOSED

- **Table 6. Percentage of Extended Terms Imposed for Determinate Cases by Offense, 1978-1980.** Table 6 shows the number of determinate offense cases for each offense for each year. It then reports the number of sentences imposed that fell outside the "normal" range (excluding extended terms and invalid data where sentences fell below the range) for the designated class. The final column lists the average sentence imposed computed on cases within the normal (not extended) sentence range.  
  
At this time, the data provided in this table are the nearest approximation of percentage of extended terms that have been imposed on determinate cases. It should be noted, however, that data errors (input errors) can not be distinguished in this chart from valid extended terms. However, procedures were used to minimize the amount of invalid data in the file. One can be relatively confident the data reported in Table 6 do indeed reflect extended terms.
- **Table 7. Average Sentence Imposed for Misdemeanor Cases, 1976-1980.** The average sentence in Table 7 is reported in portions of a year not in months. For example, the average misdemeanor sentence imposed for misdemeanants in 1976 was .65 of a year. Converted to months, the average sentence was 7.8 months. The average sentence in years for 1980 was .70 of a year, and when converted to months is 8.4.
- **Table 8. Average Sentence Imposed for Misdemeanor Cases by Offense, 1976-1980.** Data from Table 7 are reported by selected (relative high frequency) offenses. Average sentence is reported in years.
- **Figures A-G and Tables 9-24.** These tables and graphs comprise the remainder of the section on sentence imposed. In all of these, the distribution of sentences, i.e., number and percentage of values falling in each category of sentence length is shown for selected determinate offenses. Sentence lengths are broken into categories. The headings for categories of sentence lengths are in full numbers. Portions of a year are implicit in the heading. The 1-3 year column is inclusive of all sentences up to 4 years, 4-6 years is inclusive of all sentences up to 7 years, etc. Figure A is a graphic representation of data from Table 9 where the distribution of sentences imposed for all determinate cases (all offense categories grouped together) sentenced 1978-1980. In Table 10, the data from Table 9 are compared between Cook and Other Counties. In subsequent pages, a comparable graph and two tables present data on determinate sentences imposed for murder, armed robbery, rape, robbery, burglary, aggravated battery, and theft. For all charts reporting by offense, only the normal sentence range (excluding extended terms) for that offense is included in the computations.

## SENTENCE IMPOSED

### Summary of Sentence Imposed

The following notations are made from a review of Figures A-G and Tables 1-24. Reference to specific graphs or charts is included in parenthesis following the descriptive statement.

- A review of data on sentence imposed for indeterminate cases indicates that over the three year period, trends in the maximum sentence parallel the direction of change in the minimum sentence imposed. Generally, where the minimum sentence has increased or decreased the maximum sentence has followed a similar trend. (Table 1)

Over the three year period from 1976-1978, though the sentences imposed for the offenses reported remained relatively stable (at least without wide fluctuations), there are some detectable trends. For the offenses of murder and rape, there is a noticeable increase in the minimum and maximum sentence imposed. The upward trend is not as marked but present for armed robbery and aggravated battery. A definite shortening of sentences occurred over the period for attempted murder. Other offenses experiencing a shorter sentence are voluntary manslaughter and grouped Class 1 Offenses. (Table 1)

- In making comparisons by county, there remains a difference for several offense categories between sentences imposed by Cook and those imposed by grouped Other Counties. However, where the trend from 1976-1978 in Cook County is increased sentences, there has also been an upward trend in sentencing from Other Counties. The converse is also true. Where the trend from Cook County is to shorter sentence, Other Counties are also imposing shorter sentences for the same categories of offenses. (Table 2)

Generally, (except for aggravated battery) Other Counties impose higher maximum sentences than Cook for the same offense. This is also true for minimum sentences. Other Counties minimum sentences for murder and rape are notably higher than Cook. In several offense categories the minimum sentence imposed by Other Counties is only moderately higher than those imposed by Cook County such as voluntary manslaughter, robbery, burglary, theft, and forgery. (Table 2)

- A comparison of indeterminate and determinate sentences is difficult because of the different sentence structures, a range versus a fixed length. A comparison of indeterminate time served and determinate sentence imposed is included under the final section of this report.
- The period since enactment of determinant sentencing in February, 1978, is too brief a time to draw final conclusions about sentencing patterns under the new law. However, initial observations are useful to describe beginning trends. Determinate sentences for attempted murder, rape, armed robbery, other Class X and Class 1 offenses are showing an increase over the three

## SENTENCE IMPOSED

year period from 1978-1980. The fluctuations in determinate sentences over this period of time for most other categories of offenses have been very slight. One might have expected a more erratic pattern in determinate sentencing during the first 2-3 years after enactment. From these data, the system response to the statutory changes appears to have been quite undramatic. (Table 3)

- Under determinate sentencing, the tendency for Other Counties to impose higher sentences than Cook for the same categories of offenses is somewhat muted. With the exception of attempted murder, and armed robbery, determinate sentences imposed by Other Counties are within a few months of those imposed by Cook for the same offenses. Although the gap is closing (from 6.1 years in 1978 to 2.2 years in 1980), Other Counties continued to impose notably higher sentences than Cook for attempted murder. Armed robbery is the only offense for which the gap has increased. In 1978 Other Counties imposed an average sentence of 9.2 years compared to 8.7 by Cook, a difference of .5 years. In 1980, the difference was 1.5 years with Other Counties imposing 11.2 years and Cook imposing 9.7 years. (Table 4)
- In 1980, for all offense categories, except attempted murder and Class 1 offenses, the difference in sentence lengths for Whites and Non-Whites is within .5 of a year or 6 months. Non-Whites receive slightly lower average sentences for murder, voluntary manslaughter, rape, robbery, burglary, and theft. Whites receive slightly lower average sentences than Non-Whites for armed robbery, aggravated battery, forgery, Other Class X and Other Class 2 offenses. Non-Whites received notably higher average sentences than White for attempted murder and Class 1 offense in 1980. (Table 5)
- Less than 5 percent of the misdemeanants admitted to the Department are from Cook County. The average sentence imposed for misdemeanants has remained nearly constant from .65 of a year in 1976 to .70 of a year in 1980. (Table 7 and 8)
- In 1980, of all those sentenced determinately, over half (52.3 percent) received a sentence of 1-3 years. Over 75 percent of all determinate cases in 1980 received less than a 7 year sentence. Overall, Other Counties sentence a slightly greater percentage to the lower sentence lengths of 1-3 years (57 percent compared to Cook with 50.2 percent). (Table 11-24)

TABLE 1 AVERAGE SENTENCE IMPOSED FOR  
INDETERMINATE CASES BY OFFENSE, 1976-1980

OFFENSE/YEAR	CASES	AVERAGE MINIMUM	AVERAGE MAXIMUM	SHORTEST MINIMUM	LONGEST MAXIMUM
MURDER (M)					
1976	207	35.2	71.1	1.00	600.00
1977	250	36.1	73.9	14.00	1,000.00
1978	197	38.7	80.1	14.00	1,000.00
1979	93	43.0	86.6	14.00	1,000.00
1980	26	48.8	116.1	14.00	900.00
ATTEMPTED MURDER (X)					
1976	162	10.9	23.3	1.00	200.00
1977	200	9.8	20.8	1.00	600.00
1978	111	8.6	17.0	1.00	100.00
1979	29	30.6	59.3	1.00	300.00
1980	4	5.8	12.3	2.00	18.00
VOLUNTARY MANSLAUGHTER (2)					
1976	158	3.4	11.6	1.00	25.00
1977	132	3.3	11.7	1.00	20.00
1978	59	2.7	8.9	1.00	20.00
1979	8	2.7	8.8	1.00	20.00
1980	3	3.8	11.5	1.00	19.50
RAPE (X)					
1976	226	8.7	18.4	1.00	200.00
1977	213	9.9	20.6	1.00	225.00
1978	86	13.1	31.5	4.00	600.00
1979	31	13.1	29.3	4.00	200.00
1980	2	8.0	20.0	4.00	36.00
ROBBERY (2)					
1976	1,057	1.7	7.3	1.00	997.50
1977	1,087	1.7	5.2	1.00	20.00
1978	447	1.8	5.1	1.00	100.00
1979	62	1.6	3.8	1.00	20.00
1980	23	1.3	2.9	1.00	9.00
ARMED ROBBERY (X)					
1976	1,113	5.6	10.5	1.00	150.00
1977	1,163	6.1	11.6	1.00	200.00
1978	558	6.0	11.0	1.00	150.00
1979	134	8.4	15.7	1.00	100.00
1980	35	6.1	10.8	2.00	50.00
AGGRAVATED BATTERY (3)					
1976	404	2.4	6.2	1.00	100.00
1977	441	2.6	7.3	1.00	600.00
1978	198	2.6	6.9	1.00	100.00
1979	40	2.7	6.7	1.00	25.00
1980	9	1.4	3.6	1.00	10.00

TABLE 1 (CONTINUED) AVERAGE SENTENCE IMPOSED FOR  
INDETERMINATE CASES BY OFFENSE, 1976-1980

OFFENSE/YEAR	CASES	AVERAGE MINIMUM	AVERAGE MAXIMUM	SHORTEST MINIMUM	LONGEST MAXIMUM
BURGLARY (2)					
1976	2,131	1.7	6.1	1.00	20.00
1977	2,119	1.6	5.0	1.00	50.00
1978	813	1.6	4.7	1.00	40.00
1979	144	2.0	5.3	1.00	100.00
1980	53	3.2	8.9	1.00	300.00
THEFT (3)					
1976	633	1.4	4.2	1.00	15.00
1977	743	1.4	3.9	1.00	20.00
1978	269	1.3	3.4	1.00	12.00
1979	52	1.5	3.5	1.00	15.00
1980	26	1.6	3.0	1.00	15.00
FORGERY (3)					
1976	237	1.4	4.6	1.00	14.00
1977	213	1.5	4.8	1.00	10.00
1978	67	1.3	3.9	1.00	10.00
1979	11	1.8	5.1	1.00	9.00
1980	1	1.0	1.0	1.00	1.00
UNLAWFUL USE OF WEAPONS (3)					
1976	159	1.4	3.3	1.00	20.00
1977	179	1.6	4.0	1.00	18.00
1978	70	1.2	3.0	1.00	10.00
1979	14	1.3	2.9	1.00	9.00
1980	3	1.0	3.0	1.00	5.00
OTHER CLASS X					
1976	150	6.7	15.0	1.00	200.00
1977	170	6.5	13.6	1.00	200.00
1978	87	8.3	15.8	1.00	100.00
1979	18	8.4	16.3	1.00	100.00
1980	3	17.7	37.0	4.00	80.00
CLASS 1					
1976	106	7.1	16.2	1.00	200.00
1977	212	7.6	15.1	1.00	200.00
1978	92	5.5	12.4	1.00	100.00
1979	33	5.7	13.9	1.00	50.00
1980	11	6.8	18.0	1.00	75.00
OTHER CLASS 2					
1976	124	2.1	6.9	1.00	80.00
1977	171	1.8	5.8	1.00	30.00
1978	71	3.4	8.1	1.00	150.00
1979	12	3.4	10.3	1.00	20.00
1980	2	1.5	3.5	1.00	6.00

TABLE 1 (CONTINUED) AVERAGE SENTENCE IMPOSED FOR  
INDETERMINATE CASES BY OFFENSE, 1976-1980

OFFENSE/YEAR	CASES	AVERAGE MINIMUM	AVERAGE MAXIMUM	SHORTEST MINIMUM	LONGEST MAXIMUM
OTHER CLASS 3					
1976	352	1.9	5.5	1.00	50.00
1977	394	2.2	6.0	1.00	150.00
1978	151	2.1	5.6	1.00	30.00
1979	14	2.4	7.4	1.00	20.00
1980	12	9.5	28.5	1.00	300.00
CLASS 4					
1976	129	1.3	3.3	25.00	75.00
1977	186	1.4	3.4	8.00	24.00
1978	81	1.2	2.8	8.00	20.00
1979	18	1.5	3.9	5.00	20.00
1980	6	1.0	2.3	1.00	3.00

TABLE 2 AVERAGE SENTENCE IMPOSED FOR INDETERMINATE CASES BY OFFENSE AND COUNTY, 1976-1980

OFFENSE/YEAR	CASES	COOK				CASES	OTHER COUNTIES			
		AVERAGE MINIMUM	AVERAGE MAXIMUM	SHORTEST MINIMUM	LONGEST MAXIMUM		AVERAGE MINIMUM	AVERAGE MAXIMUM	SHORTEST MINIMUM	LONGEST MAXIMUM
MURDER (M)										
1976	118	30.8	62.6	14.00	600.00	89	41.0	82.3	1.00	400.00
1977	172	36.5	74.2	14.00	1,000.00	78	35.4	73.1	14.00	500.00
1978	157	36.6	75.1	14.00	600.00	40	46.8	99.9	14.00	1,000.00
1979	83	43.9	87.7	14.00	1,000.00	10	35.4	77.3	14.00	200.00
1980	22	52.9	131.1	14.00	900.00	4	26.0	33.8	14.00	45.00
ATTEMPTED MURDER (X)										
1976	127	10.3	21.2	1.00	200.00	35	13.0	31.0	3.00	90.00
1977	168	9.5	20.3	1.00	600.00	32	11.2	23.3	2.00	100.00
1978	99	8.8	16.9	1.00	100.00	12	6.9	17.2	1.00	50.00
1979	27	32.5	62.8	1.00	300.00	2	4.0	12.0	3.00	15.00
1980	1	3.0	9.0	3.00	9.00	3	6.7	13.3	2.00	18.00
VOLUNTARY MANSLAUGHTER (2)										
1976	117	3.3	11.6	1.00	20.00	35	3.8	11.5	1.00	20.00
1977	107	3.2	11.5	1.00	20.00	25	3.6	12.4	1.00	20.00
1978	50	2.6	8.9	1.00	20.00	8	3.0	9.4	1.00	10.00
1979	8	2.7	8.8	1.00	20.00	-	-	-	-	-
1980	3	3.8	11.5	2.00	19.50	-	-	-	-	-
RAPE (X)										
1976	180	7.6	15.5	4.00	200.00	45	13.0	29.1	4.00	200.00
1977	147	8.7	17.8	3.00	225.00	64	12.8	27.5	4.00	150.00
1978	59	11.1	27.2	4.00	600.00	27	17.5	40.9	4.00	300.00
1979	29	12.8	25.8	4.00	200.00	2	17.0	80.0	4.00	100.00
1980	1	4.0	4.0	4.00	4.00	1	12.0	36.0	12.00	36.00
ROBBERY (2)										
1976	852	1.6	4.9	1.00	20.00	198	2.2	7.2	1.00	20.00
1977	916	1.7	4.9	1.00	20.00	171	2.2	6.9	1.00	20.00
1978	366	1.6	4.6	1.00	100.00	81	2.3	7.4	1.00	20.00
1979	58	1.5	3.7	1.00	20.00	4	2.3	6.0	1.00	10.00
1980	23	1.3	2.9	1.00	9.00	-	-	-	-	-

TABLE 2 (CONTINUED) AVERAGE SENTENCE IMPOSED FOR INDETERMINATE CASES BY OFFENSE AND COUNTY, 1976-1980

OFFENSE/YEAR	CASES	COOK				CASES	OTHER COUNTIES			
		AVERAGE MINIMUM	AVERAGE MAXIMUM	SHORTEST MINIMUM	LONGEST MAXIMUM		AVERAGE MINIMUM	AVERAGE MAXIMUM	SHORTEST MINIMUM	LONGEST MAXIMUM
ARMED ROBBERY (X)										
1976	847	5.2	9.3	1.00	100.00	265	6.6	14.5	1.00	150.00
1977	902	5.6	10.1	1.00	180.00	261	7.6	16.8	1.00	200.00
1978	450	5.9	9.9	1.00	150.00	108	6.6	15.3	1.00	100.00
1979	121	8.5	15.5	1.00	100.00	13	7.4	17.8	2.00	200.00
1980	32	6.3	11.0	2.00	50.00	3	4.0	8.0	4.00	8.00
AGGRAVATED BATTERY (3)										
1976	262	2.7	6.5	1.00	100.00	142	1.7	5.7	1.00	10.00
1977	300	3.0	8.0	1.00	600.00	141	1.8	5.8	1.00	18.00
1978	140	2.9	7.2	1.00	100.00	58	2.0	6.3	1.00	15.00
1979	33	2.9	7.2	1.00	25.00	7	1.6	4.4	1.00	9.00
1980	8	1.3	2.9	1.00	10.00	1	3.0	9.0	3.00	9.00
BURGLARY (2)										
1976	1,089	1.6	4.4	1.00	90.00	1,038	1.8	6.1	1.00	150.00
1977	1,289	1.5	4.4	1.00	50.00	828	1.8	5.8	1.00	20.00
1978	543	1.5	4.1	1.00	30.00	270	1.9	5.9	1.00	40.00
1979	101	8.5	15.5	1.00	100.00	43	1.8	5.8	1.00	15.00
1980	45	3.4	9.0	1.00	300.00	8	2.5	8.3	1.00	27.00
THEFT (3)										
1976	272	1.3	3.5	1.00	10.00	360	1.4	4.8	1.00	15.00
1977	359	1.3	3.2	1.00	12.00	380	1.5	4.6	1.00	20.00
1978	153	1.2	2.6	1.00	12.00	116	1.4	4.3	1.00	12.00
1979	37	1.4	2.7	1.00	9.00	15	1.7	5.4	1.00	15.00
1980	19	1.6	2.7	1.00	15.00	7	1.5	3.8	1.00	10.00
FORGERY (3)										
1976	15	1.4	3.1	1.00	10.00	221	1.4	4.7	1.00	10.00
1977	26	1.3	3.3	1.00	9.00	185	1.5	5.0	1.00	10.00
1978	8	1.1	2.4	1.00	6.00	59	1.3	4.2	1.00	10.00
1979	2	1.5	2.3	1.50	3.50	9	1.8	5.7	1.00	9.00
1980	1	1.0	1.0	1.00	1.00	-	-	-	-	-



TABLE 2 (CONTINUED) AVERAGE SENTENCE IMPOSED FOR INDETERMINATE CASES BY OFFENSE AND COUNTY, 1976-1980

COOK						OTHER COUNTIES				
OFFENSE/YEAR	CASES	AVERAGE MINIMUM	AVERAGE MAXIMUM	SHORTEST MINIMUM	LONGEST MAXIMUM	CASES	AVERAGE MINIMUM	AVERAGE MAXIMUM	SHORTEST MINIMUM	LONGEST MAXIMUM
UNLAWFUL USE OF WEAPONS (3)										
1976	143	1.3	3.0	1.00	10.00	16	2.2	6.2	1.00	20.00
1977	158	1.5	3.7	1.00	18.00	21	2.0	6.3	1.00	18.00
1978	66	1.2	3.0	1.00	10.00	4	1.5	4.5	1.00	6.00
1979	14	1.3	2.9	1.00	9.00	-	-	-	-	-
1980	3	1.0	3.0	1.00	5.00	-	-	-	-	-
OTHER CLASS X										
1976	64	6.1	11.9	1.00	65.00	85	7.2	17.4	1.00	200.00
1977	92	5.8	12.7	1.00	100.00	78	7.3	14.8	1.00	200.00
1978	50	8.0	14.5	1.00	100.00	37	8.7	17.6	1.00	100.00
1979	17	8.7	16.9	1.00	100.00	1	2.0	6.0	2.00	6.00
1980	2	22.0	42.0	4.00	80.00	1	9.0	27.0	9.00	27.00
CLASS 1										
1976	98	4.9	11.3	1.00	150.00	68	10.2	23.4	1.00	200.00
1977	130	6.0	12.0	1.00	150.00	82	10.3	20.1	1.00	200.00
1978	67	5.1	10.7	1.00	100.00	25	6.4	16.8	1.00	90.00
1979	33	5.7	13.9	1.00	50.00	-	-	-	-	-
1980	10	7.2	19.5	1.00	75.00	5	3.3	9.5	2.00	10.50
OTHER CLASS 2										
1976	46	2.6	6.6	1.00	80.00	78	1.9	7.1	1.00	20.00
1977	75	1.6	4.4	1.00	30.00	95	2.0	6.9	1.00	1.00
1978	31	4.6	8.1	1.00	150.00	39	2.6	8.3	1.00	20.00
1979	7	3.4	10.9	1.00	20.00	5	3.3	9.5	2.00	10.50
1980	2	1.5	3.5	1.00	6.00	-	-	-	-	-
OTHER CLASS 3										
1976	250	2.0	5.5	1.00	50.00	102	1.6	5.4	1.00	12.00
1977	323	2.1	5.5	1.00	75.00	71	2.8	8.0	1.00	150.00
1978	120	2.2	5.6	1.00	30.00	30	1.8	5.4	1.00	15.00
1979	12	2.5	7.9	1.00	20.00	3	1.4	4.3	1.00	6.75
1980	6	17.8	53.2	1.00	300.00	6	1.2	3.8	1.00	6.00

TABLE 2 (CONTINUED) AVERAGE SENTENCE IMPOSED FOR INDETERMINATE CASES BY OFFENSE AND COUNTY, 1976-1980

COOK						OTHER COUNTIES				
OFFENSE/YEAR	CASES	AVERAGE MINIMUM	AVERAGE MAXIMUM	SHORTEST MINIMUM	LONGEST MAXIMUM	CASES	AVERAGE MINIMUM	AVERAGE MAXIMUM	SHORTEST MINIMUM	LONGEST MAXIMUM
CLASS 4										
1976	84	1.1	2.5	1.00	6.00	45	1.6	4.9	1.00	75.00
1977	117	1.5	3.1	1.00	20.00	69	1.3	4.0	1.00	24.00
1978	58	1.3	2.8	1.00	25.00	22	1.0	2.8	1.00	3.00
1979	15	1.5	3.8	1.00	20.00	3	1.4	4.3	1.00	6.75
1980	1	1.0	2.5	1.00	3.00	2	1.0	2.0	1.00	1.00

TABLE 3 AVERAGE SENTENCE IMPOSED  
FOR DETERMINATE CASES BY OFFENSE, 1978-1980

	CASES	AVERAGE SENTENCE	SHORTEST SENTENCE	LONGEST SENTENCE
MURDER (M)				
1978	49	27.2		
1979	118	26.6	20.0	40.0
1980	211	27.1	20.0	40.0
ATTEMPTED MURDER (X)				
1978	106	11.1	6.0	30.0
1979	129	12.0	6.0	30.0
1980	171	15.0	6.0	30.0
VOLUNTARY MANSLAUGHTER (2)				
1978	141	5.0	3.0	7.0
1979	154	5.0	3.0	7.0
1980	142	5.1	3.0	7.0
RAPE (X)				
1978	151	10.9	6.0	30.0
1979	241	11.8	6.0	30.0
1980	250	12.5	6.0	30.0
ROBBERY (2)				
1978	546	4.0	3.0	7.0
1979	755	3.9	3.0	7.0
1980	846	3.8	3.0	7.0
ARMED ROBBERY (X)				
1978	690	8.8	6.0	30.0
1979	944	9.3	6.0	30.0
1980	1,089	10.0	6.0	30.0
AGGRAVATED BATTERY (3)				
1978	287	3.3	2.0	5.0
1979	386	3.3	2.0	5.0
1980	462	3.2	2.0	5.0
BURGLARY (2)				
1978	1,265	3.9	3.0	7.0
1979	1,884	3.8	3.0	7.0
1980	2,339	3.8	3.0	7.0
THEFT (3)				
1978	536	2.6	2.0	5.0
1979	1,047	2.6	2.0	5.0
1980	1,461	2.7	2.0	5.0

TABLE 3 (CONTINUED) AVERAGE SENTENCE IMPOSED  
FOR DETERMINATE CASES BY OFFENSE, 1978-1980

	CASES	AVERAGE SENTENCE	SHORTEST SENTENCE	LONGEST SENTENCE
FORGERY (3)				
1978	192	2.9	2.0	5.0
1979	226	2.8	2.0	5.0
1980	225	2.8	2.0	5.0
UNLAWFUL USE OF WEAPONS (3)				
1978	119	3.0	2.0	5.0
1979	180	2.9	2.0	5.0
1980	219	2.9	2.0	5.0
OTHER CLASS X				
1978	82	11.9	6.0	30.0
1979	350	10.5	6.0	30.0
1980	472	12.3	6.0	30.0
CLASS 1				
1978	162	7.1	4.0	15.0
1979	272	7.3	4.0	15.0
1980	278	7.6	4.0	15.0
OTHER CLASS 2				
1978	91	3.9	3.0	7.0
1979	97	3.9	3.0	7.0
1980	137	3.8	3.0	7.0
OTHER CLASS 3				
1978	224	3.0	2.0	5.0
1979	278	2.8	2.0	5.0
1980	335	2.7	2.0	5.0
CLASS 4				
1978	166	1.8	1.0	3.0
1979	271	1.9	1.0	3.0
1980	286	2.0	1.0	3.0

TABLE 4 AVERAGE SENTENCE IMPOSED FOR DETERMINATE CASES BY OFFENSE AND COUNTY, 1978-1980

OFFENSE/YEAR	CASES	COOK			CASES	OTHER COUNTIES		
		AVERAGE SENTENCE	SHORTEST SENTENCE	LONGEST SENTENCE		AVERAGE SENTENCE	SHORTEST SENTENCE	LONGEST SENTENCE
MURDER (M)								
1978	28	26.2	20.0	40.0	21	28.4	20.0	40.0
1979	75	26.9	20.0	40.0	43	25.9	20.0	40.0
1980	141	26.2	20.0	40.0	70	29.0	20.0	40.0
ATTEMPTED MURDER (X)								
1978	90	10.2	6.0	30.0	16	16.1	6.0	30.0
1979	96	10.6	6.0	30.0	33	15.8	6.0	30.0
1980	143	14.6	6.0	30.0	27	16.8	6.0	30.0
VOLUNTARY MANSLAUGHTER (2)								
1978	125	4.9	3.0	7.0	16	5.6	4.0	7.0
1979	135	5.1	3.0	7.0	19	4.6	3.0	7.0
1980	127	5.1	3.0	7.0	15	5.2	3.0	7.0
RAPE (X)								
1978	108	10.6	6.0	30.0	43	11.7	6.0	30.0
1979	174	11.5	6.0	30.0	67	12.5	6.0	30.0
1980	203	12.5	6.0	30.0	47	12.9	6.0	30.0
ROBBERY (2)								
1978	446	4.0	3.0	7.0	100	4.2	3.0	7.0
1979	620	3.9	3.0	7.0	135	3.9	3.0	7.0
1980	724	3.8	3.0	7.0	122	4.0	3.0	7.0
ARMED ROBBERY (X)								
1978	528	8.7	6.0	30.0	162	9.2	6.0	30.0
1979	715	9.3	6.0	30.0	229	9.4	6.0	30.0
1980	879	9.7	6.0	30.0	210	11.2	6.0	30.0
AGGRAVATED BATTERY (3)								
1978	176	3.5	2.0	5.0	111	3.1	2.0	5.0
1979	238	3.4	2.0	5.0	148	3.0	2.0	5.0
1980	274	3.4	2.0	5.0	187	3.0	2.0	5.0

TABLE 4 (CONTINUED) AVERAGE SENTENCE IMPOSED FOR DETERMINATE CASES BY OFFENSE AND COUNTY, 1978-1980

OFFENSE/YEAR	CASES	COOK			CASES	OTHER COUNTIES		
		AVERAGE SENTENCE	SHORTEST SENTENCE	LONGEST SENTENCE		AVERAGE SENTENCE	SHORTEST SENTENCE	LONGEST SENTENCE
BURGLARY (2)								
1978	799	3.9	3.0	7.0	466	4.0	3.0	7.0
1979	1,185	3.7	3.0	7.0	699	3.9	3.0	7.0
1980	1,495	3.7	3.0	7.0	841	3.9	3.0	7.0
THEFT (3)								
1978	264	2.7	2.0	5.0	271	2.5	2.0	5.0
1979	588	2.6	2.0	5.0	459	2.7	2.0	5.0
1980	837	2.6	2.0	5.0	623	2.8	2.0	5.0
FORGERY (3)								
1978	26	2.5	2.0	5.0	166	2.9	2.0	5.0
1979	31	2.8	2.0	5.0	195	2.8	2.0	5.0
1980	72	2.8	2.0	5.0	153	2.7	2.0	5.0
UNLAWFUL USE OF WEAPONS (3)								
1978	108	3.0	2.0	5.0	11	3.0	2.0	4.0
1979	149	2.9	2.0	5.0	31	3.1	2.0	5.0
1980	188	2.9	2.0	5.0	31	3.1	2.0	5.0
OTHER CLASS X								
1978	58	10.6	6.0	30.0	24	14.8	6.0	30.0
1979	241	10.2	6.0	30.0	109	11.3	6.0	30.0
1980	353	12.2	6.0	30.0	118	12.7	6.0	30.0
CLASS 1								
1978	107	7.1	4.0	15.0	55	7.1	4.0	15.0
1979	180	7.5	4.0	15.0	92	7.0	4.0	15.0
1980	200	7.7	4.0	15.0	78	7.3	4.0	15.0
OTHER CLASS 2								
1978	42	3.9	3.0	7.0	48	3.8	3.0	7.0
1979	46	3.5	3.0	7.0	51	4.1	3.0	7.0
1980	61	3.7	3.0	7.0	76	3.9	3.0	7.0

TABLE 4 (CONTINUED) AVERAGE SENTENCE IMPOSED FOR DETERMINATE CASES BY OFFENSE AND COUNTY, 1978-1980

OFFENSE/YEAR	CASES	COOK			CASES	OTHER COUNTIES		
		AVERAGE SENTENCE	SHORTEST SENTENCE	LONGEST SENTENCE		AVERAGE SENTENCE	SHORTEST SENTENCE	LONGEST SENTENCE
OTHER CLASS 3								
1978	168	3.0	2.0	5.0	56	2.9	2.0	5.0
1979	186	2.8	2.0	5.0	92	2.9	2.0	5.0
1980	252	2.7	2.0	5.0	83	2.7	2.0	5.0
CLASS 4								
1978	100	1.9	1.0	3.0	66	1.7	1.0	3.0
1979	183	2.0	1.0	3.0	88	1.7	1.0	3.0
1980	184	2.0	1.0	3.0	101	1.9	1.0	3.0

20

TABLE 5 AVERAGE SENTENCE IMPOSED FOR DETERMINATE CASES BY OFFENSE AND RACE, 1978-1980

OFFENSE/YEAR	CASES	WHITES			CASES	NON-WHITES		
		AVERAGE SENTENCE	SHORTEST SENTENCE	LONGEST SENTENCE		AVERAGE SENTENCE	SHORTEST SENTENCE	LONGEST SENTENCE
MURDER (M)								
1978	19	26.7	20.0	40.0	30	27.5	20.0	40.0
1979	39	26.1	20.0	40.0	79	26.9	20.0	40.0
1980	79	27.4	20.0	40.0	132	26.9	20.0	40.0
ATTEMPTED MURDER (X)								
1978	19	14.0	6.0	30.0	87	10.4	6.0	30.0
1979	40	12.7	6.0	30.0	89	11.6	6.0	30.0
1980	47	13.2	6.0	30.0	124	15.6	6.0	30.0
VOLUNTARY MANSLAUGHTER (2)								
1978	35	5.2	3.0	7.0	106	4.9	3.0	7.0
1979	44	5.2	3.0	7.0	110	5.0	3.0	7.0
1980	53	5.4	3.0	7.0	89	5.0	3.0	7.0
RAPE (X)								
1978	47	11.5	6.0	30.0	104	10.7	6.0	30.0
1979	67	11.7	6.0	30.0	174	11.8	6.0	30.0
1980	59	12.9	6.0	30.0	191	12.4	6.0	30.0
ROBBERY (2)								
1978	149	4.1	3.0	7.0	397	4.0	3.0	7.0
1979	207	3.8	3.0	7.0	548	4.0	3.0	7.0
1980	213	3.9	3.0	7.0	633	3.8	3.0	7.0
ARMED ROBBERY (X)								
1978	187	9.1	6.0	30.0	503	8.7	6.0	30.0
1979	269	8.4	6.0	30.0	675	9.7	6.0	30.0
1980	251	9.9	6.0	30.0	838	10.1	6.0	30.0
AGGRAVATED BATTERY (3)								
1978	133	3.2	2.0	5.0	153	3.5	2.0	5.0
1979	141	3.1	2.0	5.0	245	3.3	2.0	5.0
1980	183	3.0	2.0	5.0	279	3.3	2.0	5.0

21

TABLE 5 (CONTINUED) AVERAGE SENTENCE IMPOSED FOR DETERMINATE CASES BY OFFENSE AND RACE, 1978-1980

OFFENSE/YEAR	CASES	WHITES			CASES	NON-WHITES		
		AVERAGE SENTENCE	SHORTEST SENTENCE	LONGEST SENTENCE		AVERAGE SENTENCE	SHORTEST SENTENCE	LONGEST SENTENCE
BURGLARY (2)								
1978	605	3.9	3.0	7.0	660	3.9	3.0	7.0
1979	956	3.8	3.0	7.0	928	3.8	3.0	7.0
1980	1,130	3.8	3.0	7.0	1,209	3.7	3.0	7.0
THEFT (3)								
1978	276	2.6	2.0	5.0	260	2.7	2.0	5.0
1979	464	2.6	2.0	5.0	583	2.6	2.0	5.0
1980	667	2.8	2.0	5.0	794	2.6	2.0	5.0
FORGERY (3)								
1978	139	2.9	2.0	5.0	53	2.8	2.0	5.0
1979	160	2.8	2.0	5.0	66	2.8	2.0	5.0
1980	155	2.7	2.0	5.0	70	2.8	2.0	5.0
UNLAWFUL USE OF WEAPONS (3)								
1978	22	3.2	2.0	5.0	97	2.9	2.0	5.0
1979	53	3.0	2.0	5.0	127	2.9	2.0	5.0
1980	61	2.9	2.0	5.0	158	2.9	2.0	5.0
OTHER CLASS X								
1978	30	13.7	6.0	30.0	52	10.8	6.0	30.0
1979	120	10.9	6.0	30.0	230	10.3	6.0	30.0
1980	160	12.2	6.0	30.0	312	12.4	6.0	30.0
CLASS 1								
1978	68	6.9	4.0	15.0	94	7.2	4.0	15.0
1979	100	7.5	4.0	15.0	172	7.3	4.0	15.0
1980	114	6.9	4.0	15.0	164	8.1	4.0	15.0
OTHER CLASS 2								
1978	63	3.9	3.0	7.0	28	3.8	3.0	7.0
1979	57	4.1	3.0	7.0	40	3.5	3.0	6.0
1980	78	3.8	3.0	7.0	59	3.9	3.0	7.0

TABLE 5 (CONTINUED) AVERAGE SENTENCE IMPOSED FOR DETERMINATE CASES BY OFFENSE AND RACE, 1978-1980

OFFENSE/YEAR	CASES	WHITES			CASES	NON-WHITES		
		AVERAGE SENTENCE	SHORTEST SENTENCE	LONGEST SENTENCE		AVERAGE SENTENCE	SHORTEST SENTENCE	LONGEST SENTENCE
OTHER CLASS 3								
1978	99	3.0	2.0	5.0	125	3.0	2.0	5.0
1979	123	2.8	2.0	5.0	155	2.8	2.0	5.0
1980	119	2.7	2.0	5.0	216	2.7	2.0	5.0
CLASS 4								
1978	83	1.7	1.0	3.0	83	1.9	1.0	3.0
1979	127	1.9	1.0	3.0	144	1.9	1.0	3.0
1980	122	2.0	1.0	3.0	164	2.0	1.0	3.0



TABLE 6 PERCENTAGE OF EXTENDED TERMS IMPOSED  
FOR DETERMINATE CASES BY OFFENSE, 1978-1980

	CASES	% OUTSIDE RANGE	AVERAGE SENTENCE WITHIN RANGE
MURDER (M)			
1978	57	14	27.2
1979	134	12	26.6
1980	254	17	27.1
ATTEMPTED MURDER (X)			
1978	144	26	11.1
1979	181	29	12.0
1980	213	20	15.0
VOLUNTARY MANSLAUGHTER (2)			
1978	149	5	5.0
1979	160	4	5.0
1980	155	8	5.1
RAPE (X)			
1978	156	3	10.9
1979	258	7	11.8
1980	269	7	12.5
ROBBERY (2)			
1978	568	4	4.0
1979	799	6	3.9
1980	877	4	3.8
ARMED ROBBERY (X)			
1978	718	4	8.9
1979	996	5	9.3
1980	1,137	4	10.0
AGGRAVATED BATTERY (3)			
1978	320	11	3.3
1979	444	13	3.3
1980	516	11	3.2
BURGLARY (2)			
1978	1,314	4	3.9
1979	1,969	4	3.8
1980	2,424	4	3.8
THEFT (3)			
1978	632	15	2.6
1979	1,237	15	2.6
1980	1,631	10	2.7

TABLE 6 (CONTINUED) PERCENTAGE OF EXTENDED TERMS IMPOSED  
FOR DETERMINATE CASES BY OFFENSE, 1978-1980

	CASES	% OUTSIDE RANGE	AVERAGE SENTENCE WITHIN RANGE
FORGERY (3)			
1978	194	1	2.9
1979	228	1	2.8
1980	233	4	2.8
UNLAWFUL USE OF WEAPONS (3)			
1978	129	8	3.0
1979	202	11	2.9
1980	234	7	2.9
OTHER CLASS X			
1978	105	22	11.9
1979	383	9	10.5
1980	511	8	12.3
CLASS 1			
1978	188	14	7.1
1979	326	17	7.4
1980	337	18	7.6
OTHER CLASS 2			
1978	107	15	3.9
1979	135	28	3.9
1980	168	18	3.8
OTHER CLASS 3			
1978	255	13	3.0
1979	319	13	2.8
1980	361	8	2.7
CLASS 4			
1978	198	17	1.8
1979	299	10	1.9
1980	327	13	2.0

TABLE 7 AVERAGE SENTENCE IMPOSED FOR MISDEMEANOR CASES, 1976-1980

YEAR	CASES	AVERAGE SENTENCE	SHORTEST SENTENCE	LONGEST SENTENCE
1976	1,329	.65	.02	1.00
1977	1,190	.69	.08	1.00
1978	987	.69	.02	1.00
1979	1,091	.69	.01	1.00
1980	1,199	.70	.08	1.00

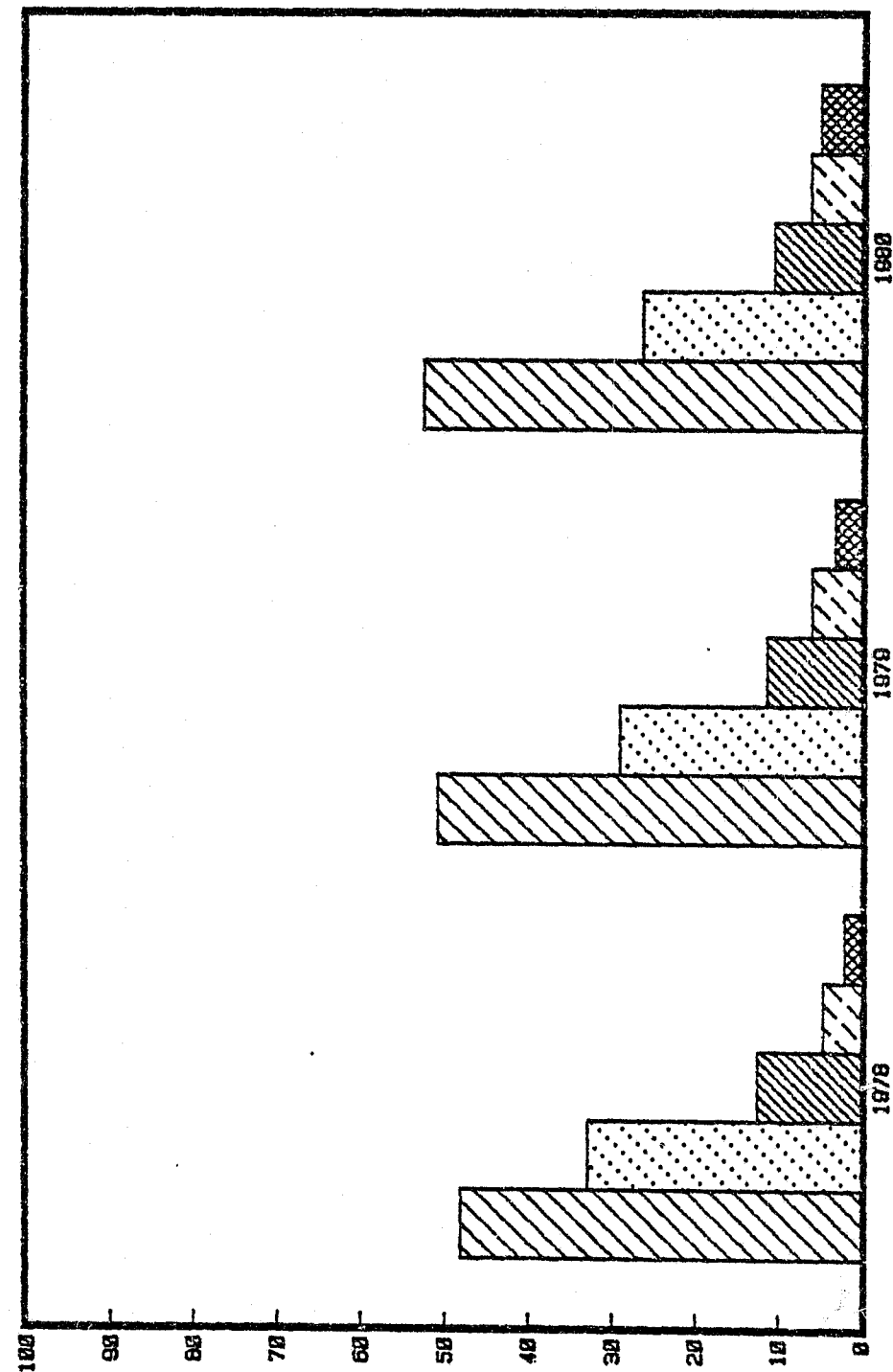
TABLE 8 AVERAGE SENTENCE IMPOSED FOR MISDEMEANOR CASES BY OFFENSE, 1976-1980

	CASES	AVERAGE SENTENCE	SHORTEST SENTENCE	LONGEST SENTENCE
BATTERY				
1976	110	.64	.16	1.00
1977	106	.70	.08	1.00
1978	91	.74	.08	1.00
1979	114	.73	.01	1.00
1980	105	.75	.25	1.00
THEFT				
1976	385	.69	.08	1.00
1977	314	.76	.08	1.00
1978	244	.73	.02	1.00
1979	276	.76	.08	1.00
1980	327	.74	.16	1.00
DECEPTIVE PRACTICES				
1976	109	.72	.25	1.00
1977	116	.76	.16	1.00
1978	92	.73	.16	1.00
1979	75	.71	.16	1.00
1980	60	.76	.25	1.00
CRIMINAL DAMAGE				
1976	74	.69	.16	1.00
1977	63	.78	.19	1.00
1978	62	.72	.02	1.00
1979	87	.73	.08	1.00
1980	90	.73	.16	1.00
UNLAWFUL USE OF WEAPONS				
1976	26	.69	.16	1.00
1977	18	.68	.25	1.00
1978	23	.78	.25	1.00
1979	24	.81	.18	1.00
1980	38	.79	.25	1.00
OTHERS				
1976	625	.60	.02	1.00
1977	573	.63	.08	1.00
1978	475	.64	.02	1.00
1979	515	.64	.08	1.00
1980	579	.66	.08	1.00

FIGURE A. DETERMINATE SENTENCES IMPOSED

FOR ALL OFFENSES -

1-3 YEARS      4-6 YEARS      7-10 YEARS      11-20 YEARS      21 AND OVER



ILLINOIS DEPT. OF CORRECTIONS  
POLICY DEVELOPMENT

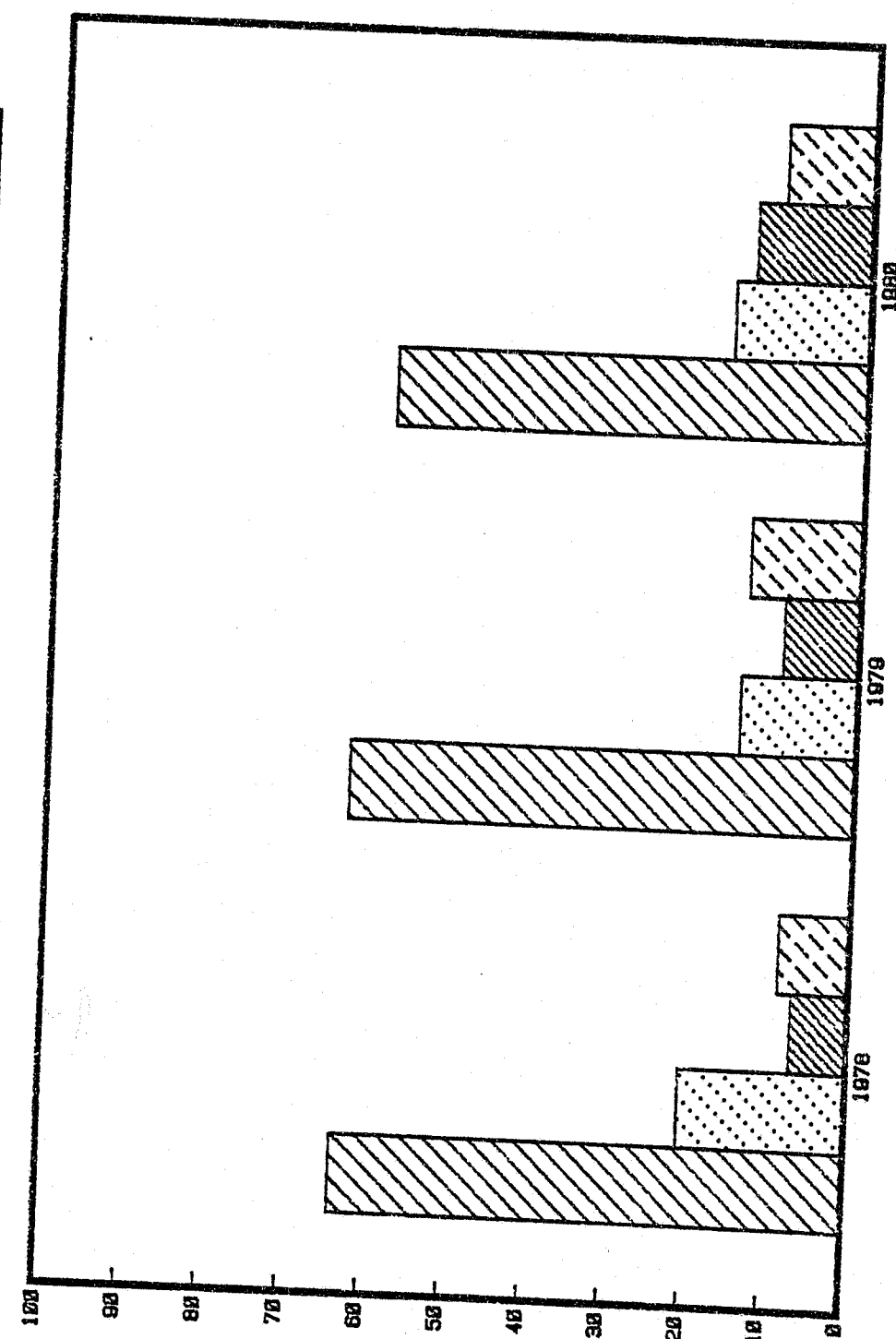
TABLE 9 DETERMINATE SENTENCES IMPOSED, 1978-1980

	1-3 YEARS		4-6 YEARS		7-10 YEARS		11-20 YEARS		21 PLUS	
	#	%	#	%	#	%	#	%	#	%
1978	2,788	48.1	1,903	32.9	723	12.5	265	4.6	113	2.0
1979	4,540	50.7	2,595	29.0	1,011	11.3	532	5.9	277	3.1
1980	5,596	52.3	2,797	26.2	1,122	10.5	656	6.1	521	4.9

TABLE 10 DETERMINATE SENTENCES IMPOSED BY COUNTY, 1978-1980

	1-3 YEARS		4-6 YEARS		7-10 YEARS		11-20 YEARS		21 PLUS	
	#	%	#	%	#	%	#	%	#	%
1978										
-Cook	1,647	43.7	1,313	34.8	575	15.2	183	4.9	5	1.4
-Other	1,137	56.5	586	29.1	147	7.3	82	4.1	60	3.0
1979										
-Cook	2,863	48.5	1,707	28.9	777	13.2	390	6.6	165	2.8
-Other	1,677	54.9	888	29.1	234	7.7	142	4.7	112	3.7
1980										
-Cook	3,668	50.2	1,899	26.0	869	11.9	499	6.8	367	5.0
-Other	1,921	57.0	895	26.5	248	7.4	157	4.7	151	4.5

FIGURE B. DETERMINATE SENTENCES IMPOSED FOR MURDER



ILLINOIS DEPT. OF CORRECTIONS  
POLICY DEVELOPMENT

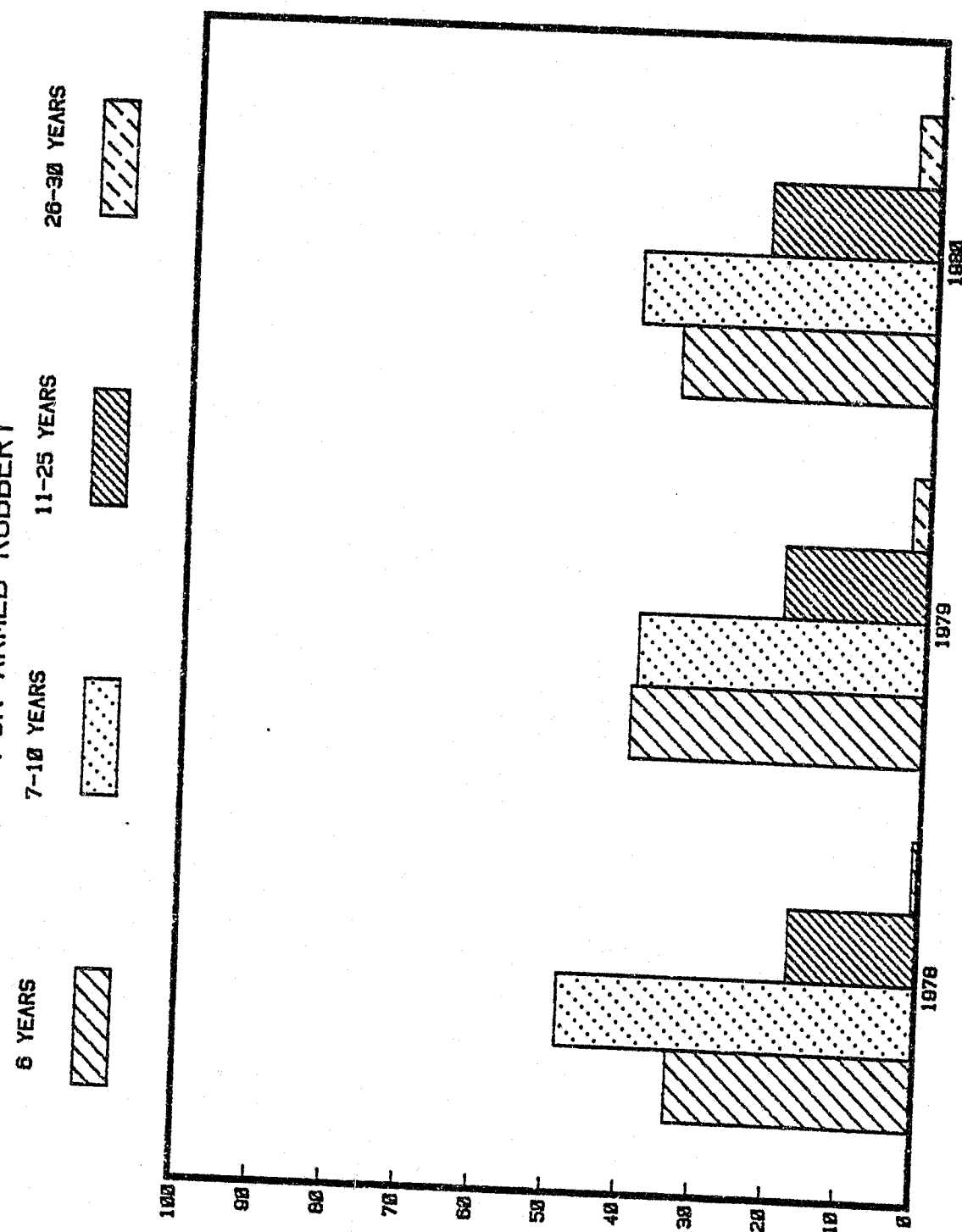
TABLE 11 DETERMINATE SENTENCES IMPOSED FOR MURDER, 1978-1980

	20-30 YEARS		31-40 YEARS		41-80 YEARS		81 and above	
	#	%	#	%	#	%	#	%
1978	37	63.8	12	20.7	4	6.9	5	8.6
1979	96	62.7	22	14.4	14	9.2	21	13.7
1980	164	58.4	47	16.7	40	14.2	30	10.7

TABLE 12 DETERMINATE SENTENCES IMPOSED FOR MURDER BY COUNTY, 1978-1980

	20-30 YEARS		31-40 YEARS		41-80 YEARS		81 and above	
	#	%	#	%	#	%	#	%
1978								
-Cook	24	82.8	4	13.8	1	3.4	0	0.0
-Other	13	44.8	8	27.6	3	10.3	5	17.2
1979								
-Cook	61	64.9	14	14.9	10	10.6	9	9.6
-Other	35	59.3	8	13.6	4	6.8	12	20.3
1980								
-Cook	118	62.4	23	12.2	31	16.4	17	9.0
-Other	46	50.5	24	26.4	9	9.9	12	13.2

FIGURE C. DETERMINATE SENTENCES IMPOSED  
FOR ARMED ROBBERY



ILLINOIS DEPT. OF CORRECTIONS  
POLICY DEVELOPMENT

TABLE 13 DETERMINATE SENTENCES IMPOSED FOR ARMED ROBBERY, 1978-1980

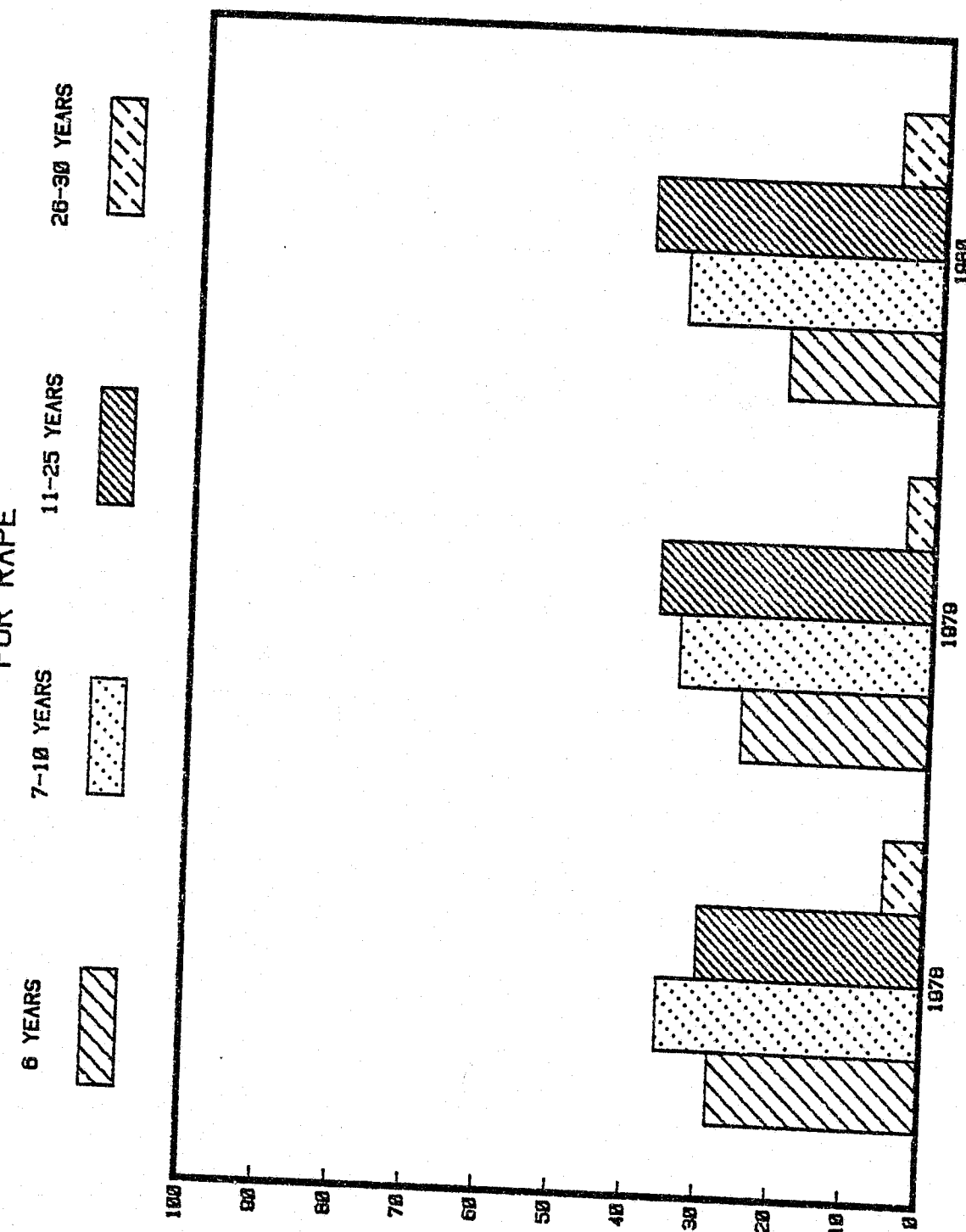
	6 YEARS		7-10 YEARS		11-25 YEARS		26-30 YEARS	
	#	%	#	%	#	%	#	%
1978	231	33.5	335	48.6	120	17.4	4	.6
1979	375	39.7	367	38.9	182	19.3	20	2.1
1980	374	34.3	435	39.9	247	22.7	33	3.0

TABLE 14 DETERMINATE SENTENCES IMPOSED FOR ARMED ROBBERY BY COUNTY, 1978-1980

	6 YEARS		7-10 YEARS		11-25 YEARS		26-30 YEARS	
	#	%	#	%	#	%	#	%
1978								
-Cook	162	30.7	280	53.0	84	15.9	2	.4
-Other	69	42.6	55	34.0	36	22.2	2	1.2
1979								
-Cook	265	37.1	298	41.7	138	19.3	14	2.0
-Other	110	48.0	69	30.1	44	19.2	6	2.6
1980								
-Cook	310	35.3	361	41.1	184	20.9	24	2.7
-Other	64	30.5	74	35.2	63	30.0	9	4.3



FIGURE D. DETERMINATE SENTENCES IMPOSED FOR RAPE



ILLINOIS DEPT. OF CORRECTIONS  
POLICY DEVELOPMENT

TABLE 15 DETERMINATE SENTENCES IMPOSED FOR RAPE, 1978-1980

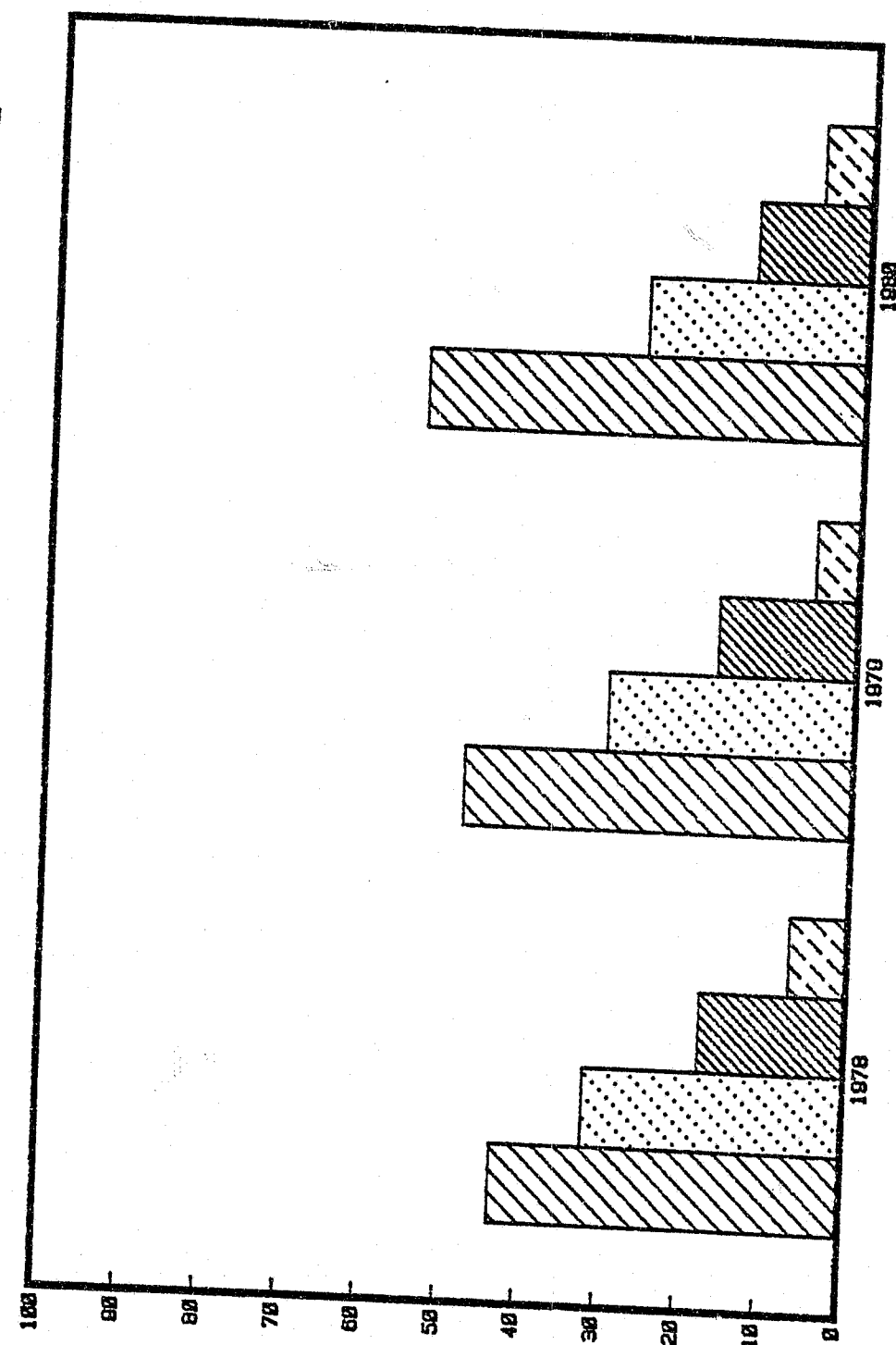
	6 YEARS		7-10 YEARS		11-25 YEARS		26-30 YEARS	
	#	%	#	%	#	%	#	%
1978	43	28.5	54	35.8	46	30.5	8	5.3
1979	61	25.3	82	34.0	89	36.9	9	3.7
1980	51	20.4	86	34.4	98	39.2	15	6.0

TABLE 16 DETERMINATE SENTENCES IMPOSED FOR RAPE BY COUNTY, 1978-1980

	6 YEARS		7-10 YEARS		11-25 YEARS		26-30 YEARS	
	#	%	#	%	#	%	#	%
1978								
-Cook	31	28.7	42	38.9	30	27.8	5	4.6
-Other	12	27.9	12	27.9	16	37.2	3	7.0
1979								
-Cook	38	21.8	65	37.4	68	39.1	3	1.7
-Other	23	34.3	17	25.4	21	31.3	6	9.0
1980								
-Cook	38	18.7	71	35.0	84	41.4	10	4.9
-Other	13	27.7	15	31.9	14	29.8	5	10.6

FIGURE E. DETERMINATE SENTENCES IMPOSED FOR ROBBERY

3 YEARS 4 YEARS 5-6 YEARS 7 YEARS



ILLINOIS DEPT. OF CORRECTIONS  
POLICY DEVELOPMENT

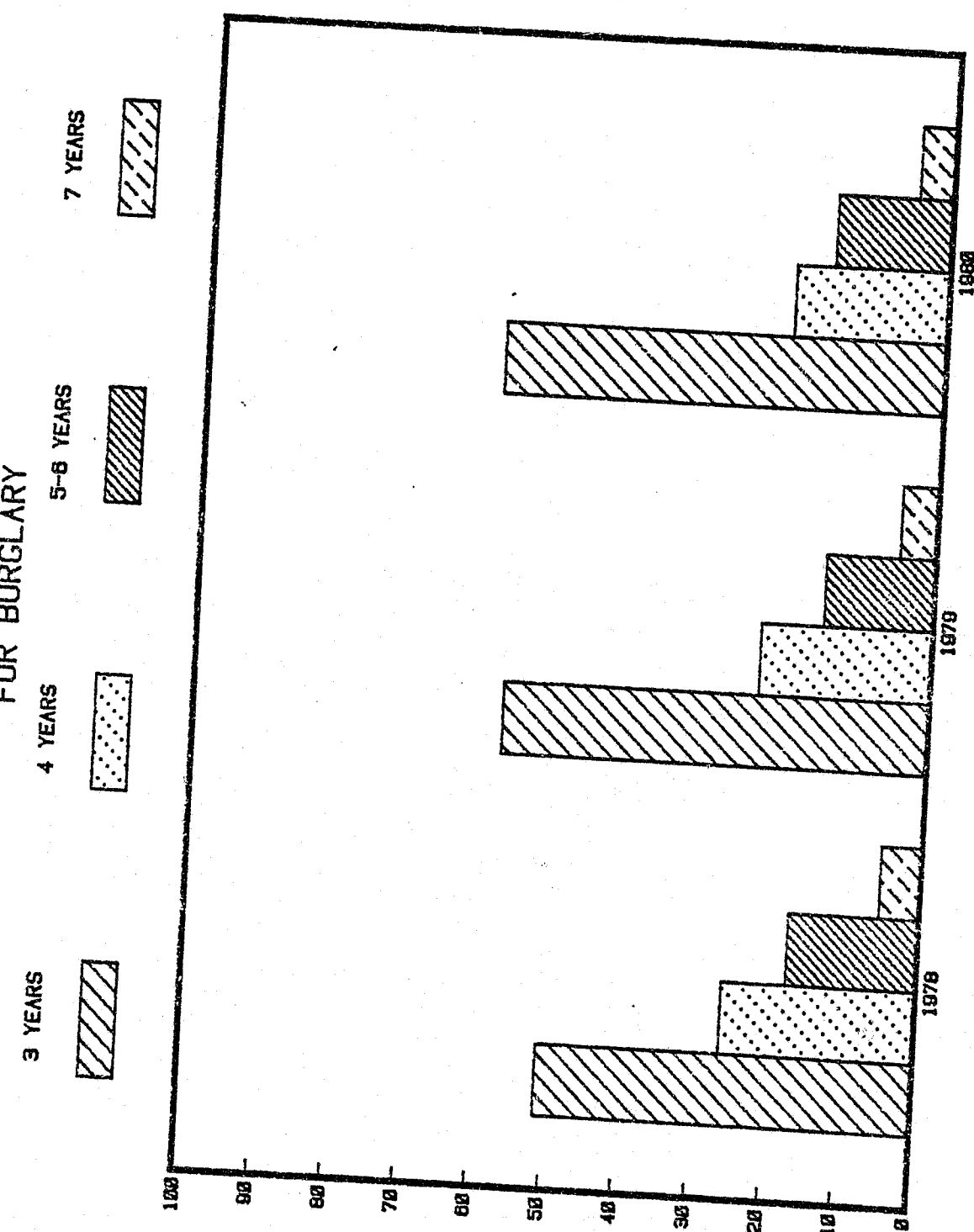
TABLE 17 DETERMINATE SENTENCES IMPOSED FOR ROBBERY, 1978-1980

	3 years		4 years		5-6 years		7 years	
	#	%	#	%	#	%	#	%
1978	237	43.4	175	32.1	97	17.8	37	6.8
1979	362	47.9	228	30.2	127	16.8	38	5.0
1980	456	53.9	227	26.8	115	13.6	48	5.7

TABLE 18 DETERMINATE SENTENCES IMPOSED FOR ROBBERY BY COUNTY, 1978-1980

	3 years		4 years		5-6 years		7 years	
	#	%	#	%	#	%	#	%
1978								
-Cook	202	45.3	145	32.5	70	15.7	29	6.5
-Other	35	35.0	30	30.0	27	27.0	8	8.0
1979								
-Cook	300	48.4	183	29.5	103	16.6	34	5.5
-Other	62	45.9	45	33.3	24	17.8	4	3.0
1980								
-Cook	402	55.5	187	25.8	99	13.7	36	5.0
-Other	54	44.3	40	32.8	16	13.1	12	9.8

FIGURE F. DETERMINATE SENTENCES IMPOSED FOR BURGLARY



ILLINOIS DEPT. OF CORRECTIONS  
POLICY DEVELOPMENT

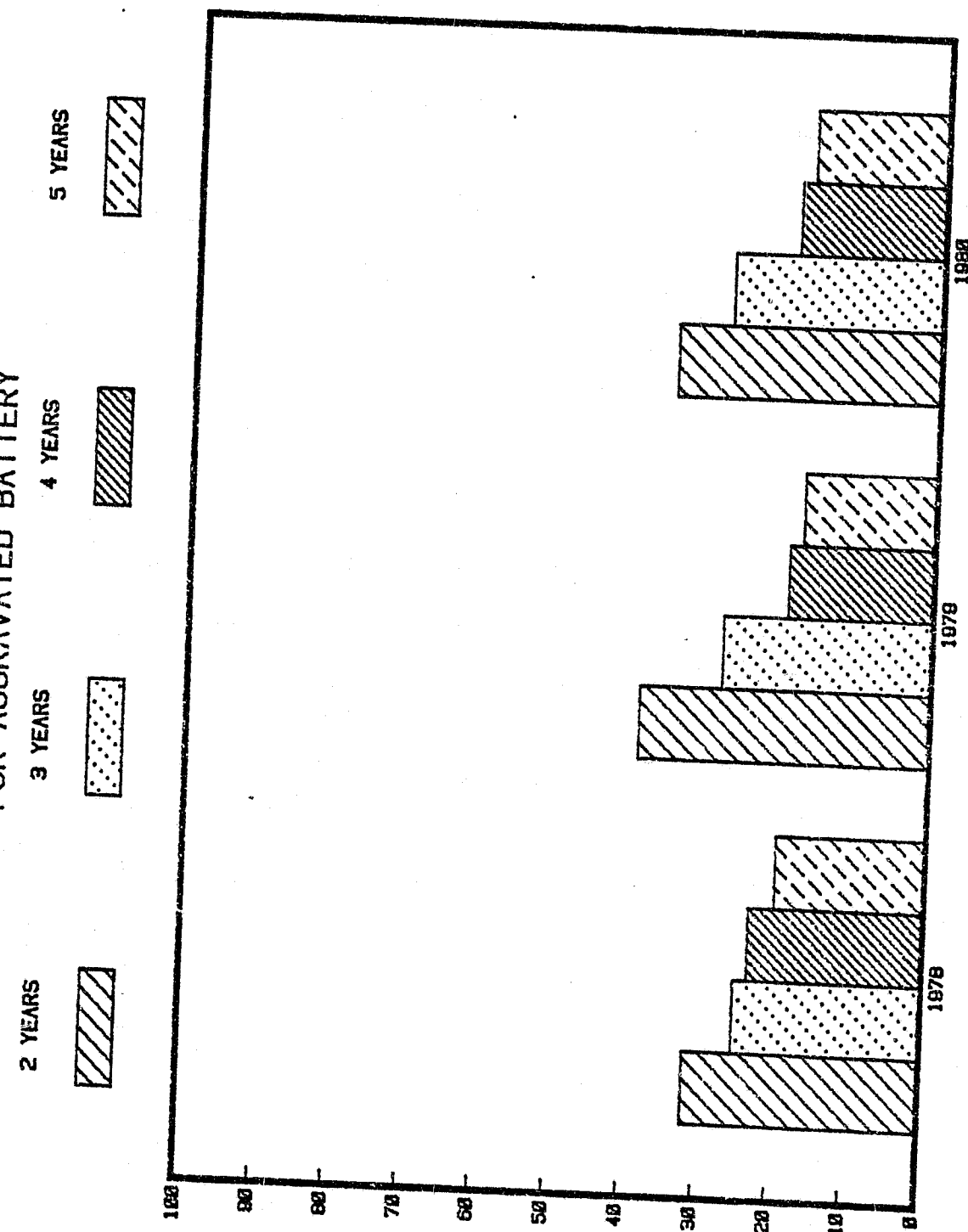
TABLE 19 DETERMINATE SENTENCES IMPOSED FOR BURGLARY, 1978-1980

	3 years		4 years		5-6 years		7 years	
	#	%	#	%	#	%	#	%
1978	646	51.1	331	26.2	222	17.5	66	5.2
1979	1,086	57.6	434	23.0	275	14.6	89	4.7
1980	1,392	59.5	483	20.6	360	15.4	104	4.4

TABLE 20 DETERMINATE SENTENCES IMPOSED FOR BURGLARY BY COUNTY, 1978-1980

	3 years		4 years		5-6 years		7 years	
	#	%	#	%	#	%	#	%
1978								
-Cook	406	50.8	221	27.7	132	16.5	40	5.0
-Other	240	51.5	110	23.6	90	19.3	26	5.6
1979								
-Cook	704	59.4	289	24.4	143	12.1	49	4.1
-Other	382	54.6	145	20.7	132	18.9	40	5.7
1980								
-Cook	924	61.8	331	22.1	193	12.9	47	3.1
-Other	467	55.5	152	18.1	167	19.9	55	6.5

FIGURE G. DETERMINATE SENTENCES IMPOSED FOR AGGRAVATED BATTERY



ILLINOIS DEPT. OF CORRECTIONS  
POLICY DEVELOPMENT

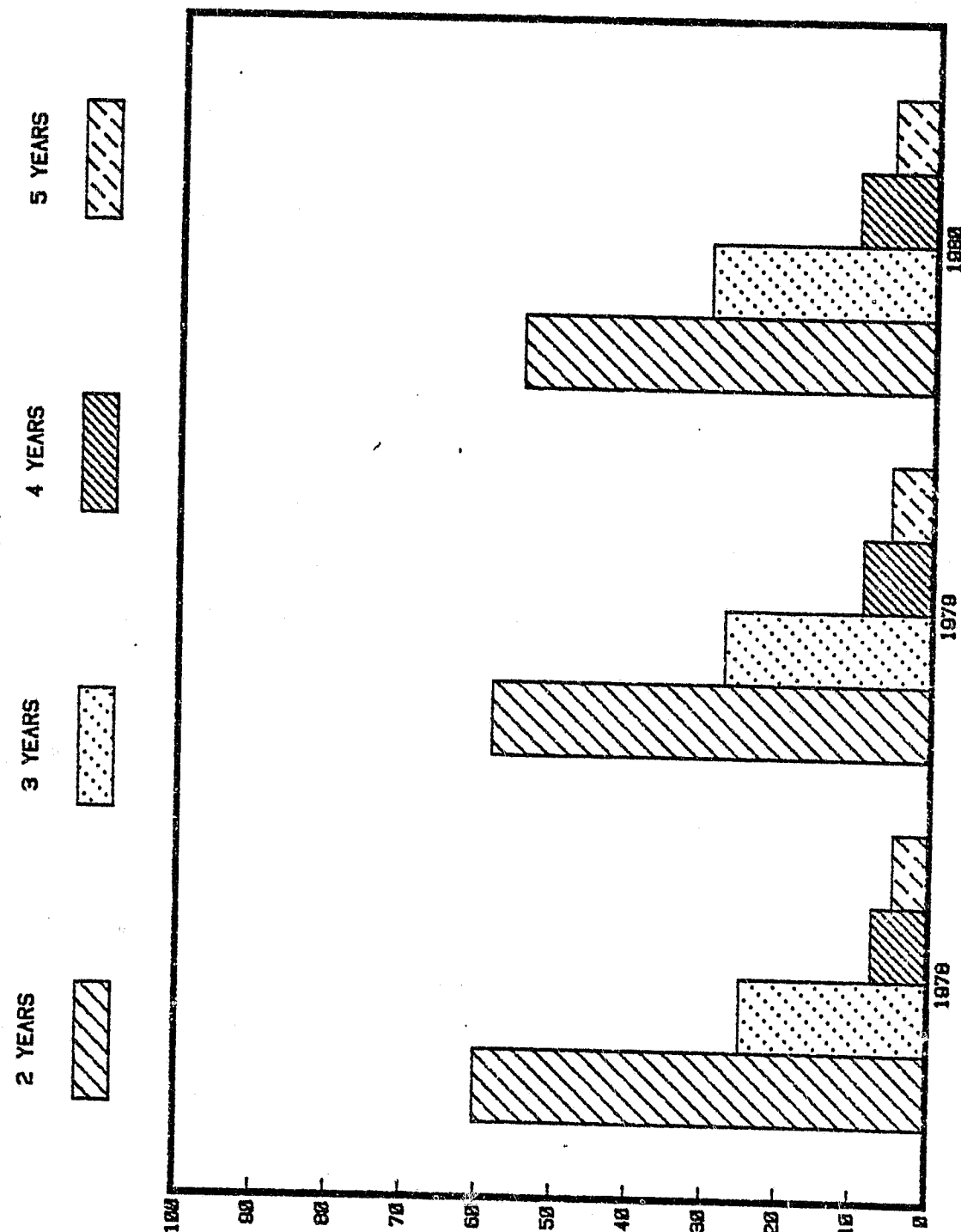
TABLE 21 DETERMINATE SENTENCES IMPOSED FOR AGGRAVATED BATTERY, 1978-1980

	2 years		3 years		4 years		5 years	
	#	%	#	%	#	%	#	%
1978	91	31.7	72	25.1	67	23.3	57	19.9
1979	150	38.9	83	21.5	70	18.1	83	21.5
1980	163	35.2	129	27.9	89	19.3	81	17.5

TABLE 22 DETERMINATE SENTENCES IMPOSED FOR AGGRAVATED BATTERY BY COUNTY, 1978-1980

	2 years		3 years		4 years		5 years	
	#	%	#	%	#	%	#	%
1978								
-Cook	45	25.6	42	23.9	47	26.7	42	23.9
-Other	46	41.4	30	27.0	20	18.0	15	13.5
1979								
-Cook	81	34.0	45	18.9	52	21.8	60	25.2
-Other	69	46.6	38	25.7	18	12.2	23	15.5
1980								
-Cook	79	28.8	84	30.7	52	19.0	50	21.5
-Other	83	44.4	45	24.1	37	19.8	22	11.8

FIGURE H. DETERMINATE SENTENCES IMPOSED FOR THEFT



ILLINOIS DEPT. OF CORRECTIONS  
POLICY DEVELOPMENT

TABLE 23 DETERMINATE SENTENCES IMPOSED FOR THEFT, 1978-1980

	2 years		3 years		4 years		5 years	
	#	%	#	%	#	%	#	%
1978	323	60.3	134	25.0	55	7.3	24	4.5
1979	610	58.3	288	27.5	94	9.0	55	5.3
1980	797	54.6	437	29.9	147	10.1	80	5.5

TABLE 24 DETERMINATE SENTENCES IMPOSED FOR THEFT BY COUNTY, 1978-1980

	2 years		3 years		4 years		5 years	
	#	%	#	%	#	%	#	%
1978								
-Cook	147	55.7	70	26.5	35	13.3	12	4.5
-Other	176	64.9	64	23.6	19	7.0	12	4.4
1979								
-Cook	355	60.4	153	26.0	52	8.8	28	4.8
-Other	255	55.6	135	29.4	42	9.2	27	5.9
1980								
-Cook	470	56.2	258	30.8	81	9.7	28	3.3
-Other	326	52.3	179	28.7	66	10.6	52	8.3



## LENGTH OF STAY

Several months were spent programming, reprogramming, and analyzing data in order to improve the quality of information on length of stay. As described in the introduction, there remain limitations. The factor which most constrains the data is the lack of a way to record the release date, i.e., there is no such element in CIS. Status code date (which is often difficult to identify properly) was used as a substitute. All data are reported by the year the offender was released from prison (includes release from community correctional centers).

By searching history and off-line files, we were able this year to retrieve a significantly larger number of offender cases on which to compute length of stay. Unlike sentence imposed, length of stay is computed on offender case, not on offense case. In other words it is the actual time *an offender* served or spent in prison. Length of stay is reported by offense in several of the charts that follow. Improvements were made this year by insuring that offense and length of stay are accurately associated. Where a person may have been serving time for more than one offense, the length of stay is reported by the highest class of offense represented.

In all tables two periods of stay are reported. The first, labeled "time served" includes jail time and prison stay. Jail time is credited against their sentence. The other is "prison stay". This refers just to the time spent in IDOC prison custody.

Due to the limitation on release dates, it is only the time spent in prison before the first release that is computed and reported in the tables under this section. For offenders released to parole or supervision, who are revoked and returned to prison, the additional time spent completing the original sentence is not included in length of stay computations. Thus, the figures presented here do not represent time served on a commitment after return to prison.

It should be noted that the number of cases reported for the year 1980 in all of the tables below will be considerably fewer than preceding years. In June, 1980, the Department implemented a temporary early release program where offenders meeting select criteria were released from 30 to 90 days prior to their scheduled "out date". To avoid a misrepresentation of the trend in length of stay which would have been affected by the temporary program, only the first six months of 1980 were included in the computations.

- **Figure 1. Average Length of Stay for Adult Felons.** Figure 1 displays the average time served and average prison stay for all categories and types of cases of adult felons for the years 1976-1980. Both are reported in years. Data which support this graph are found in Table 25.
- **Table 25. Length of Stay for Adult Felons, 1976-1980.** The average time, the shortest time and the longest time for any case in the aggregate group are provided for both time served and prison stay by year of release.

## LENGTH OF STAY

- **Table 26. Length of Stay for Adult Felons by County, 1976-1980.** This table reports data from Table 25 broken out by Cook and Other Counties.
- **Table 27. Length of Stay for Adult Felons by Offense, 1976-1980.** Table 27 presents the average time served and average prison stay by offense. An explanatory note is required with this table regarding shortest time served. Given the constraints mentioned earlier, it is recognized that there is a degree of invalid data among the raw data figures. Precautions have been taken to keep the error to a minimum in order not to distort the findings as presented. On Table 27, there are offenses for which a length of time served (including jail credit) could be less than 1 year. In other categories of offense, such as murder, attempted murder, rape, armed robbery and other Class X offenses, a valid length of stay of less than a year is highly unlikely. If it does occur it is more likely "bad" data or an unusual case, which is not representative of others in the group. Consequently, to avoid an artificial lowering of average time served, cases with extremely low values have been removed from the computations for those offenses listed above. This procedure allows a more representative picture of the average time served. Computations on prison stay are not affected by this procedure.
- **Figure J. Average Length of Stay for Indeterminate Cases.** Figure J displays the average time served and average prison stay in years for all offense categories of indeterminate cases. Data supporting this graph are found in Table 28.
- **Table 28. Length of Stay for Indeterminate Cases, 1976-1980.** The number of indeterminate cases, the average time, the shortest and the longest time served and the in prison stay are provided.
- **Table 29. Length of Stay for Indeterminate Cases by County, 1976-1980.** Data from Table 28 are broken out by county — Cook and Other Counties.
- **Table 30. Length of Stay for Indeterminate Cases by Offense, 1976-1980.** Table 30 provides data on average time served and average prison stay reported by major offense categories. As in Table 27, the lower limit (shortest time served) on any case for murder, attempted murder, rape, armed robbery, and other Class X offenses has been restricted to 1 year. Cases falling below that were not included in the computation of time served to avoid an artificial lowering of the average. Other offense categories and all prison stay computations are not affected by this restriction.

## LENGTH OF STAY

- **Table 31. Length of Stay for Determinate Cases, 1978-1980.** Considerable explanation is required to avoid misinterpretation regarding time served for determinate cases of this table and the following table. The length of stay in all of the tables in this section was computed after the offender had been released from prison (release date minus admit date equals prison stay; release date minus custody date equals time served). To have been released in 1978 or 1979 or 1980 when determinate sentencing was enacted in February, 1978, means the offender had to have served time on a relatively short sentence. Most offenders sentenced after February, 1978, with more serious offense convictions are still in prison. Insufficient time was lapsed for their release. Consequently, the length of stay reported in Table 31 is obviously for a non-representative group of determinate offenders, i.e., those with shorter sentences.

The figures for the year 1978 require explanation. If the law was enacted in February, how could any offender be released in 1978 with an average time served of 1.2 years? Implementation of the law permitted offenders the option of electing a determinate sentence if the crime was committed before 1978 but sentencing occurred after February, 1978. This group of offenders released in 1978 is no doubt primarily comprised of such persons. This is confirmed by comparing time served to prison stay. Relatively little time was spent in prison compared to the time in jail. It is suggested that the motivation to elect determinate over indeterminate would be high among those who would "get a better deal" under determinate sentencing. Consequently, immediately following (first 2 years) the enactment of determinate sentencing, the Department experienced the "benefit" of the shorter length of stay for those indeterminate cases who converted and for those determinate offenders with short sentences.

- **Table 32. Length of Stay for Determinate Cases Released in 1980 by Selected Offenses.** Length of stay is presented in Table 32 by selected offense for cases released in 1980. Offenses were reported for which it is reasonable to expect that the length of stay begins to approximate a norm.
- **Table 33. Length of Stay for Misdemeanor Cases, 1976-1980.** In Table 33, average time served and prison stay are reported in years for misdemeanants (all offense categories grouped). Converted to months, .42 of a year is 5.2 months; .46 of a year equals approximately 5.5 months.

### Summary of Length of Stay

The following comments are made from a review of Figures I and J and Tables 25-33. Reference to specific graphs or charts is included in parenthesis following the statement.

## LENGTH OF STAY

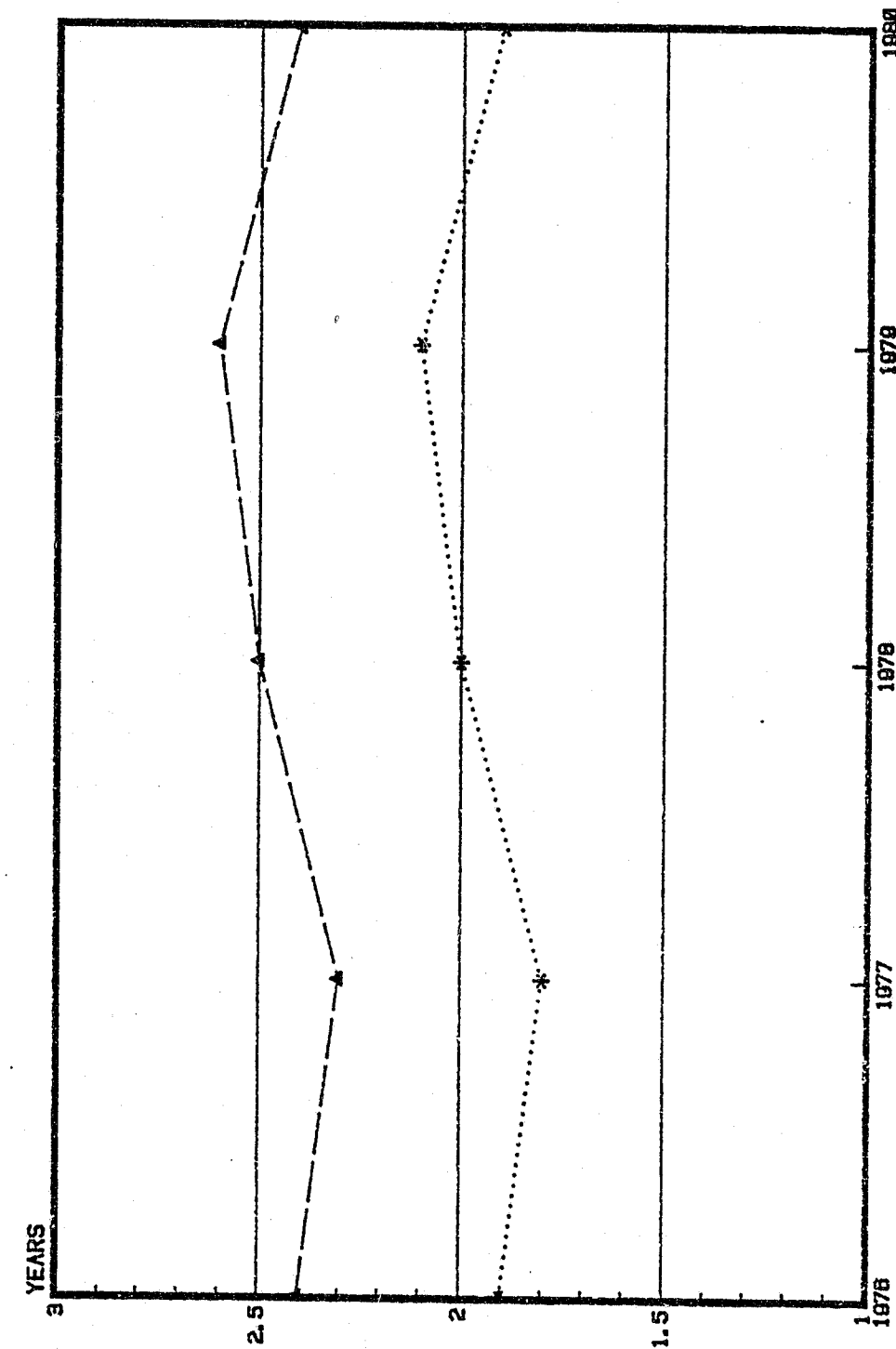
- According to data provided in Table 25, the average length of time served for a felony (includes jail time) has remained about 2.5 years for offenders released from 1976-1980. The shortest average stay was 2.3 years in 1977, the longest average stay was 2.6 years for offenders released in 1979. (Table 25)
- Consistently over the years from 1976-1980, offenders committed from Cook County served more total time, approximately 4 months longer than Others, while offenders from Other Counties have spent slightly more time in prison. It appears that Cook County offenders do more time in jail than offenders from Other Counties. (Table 26)
- The average time served for any one category of offense reflects the same stable pattern over the years as the length of stay data for all offenses. There are no dramatic fluctuations in any one offense. (Table 27)
- In separating computations of length of stay for indeterminate cases from determinate cases, there is an increased length of stay compared to all adult offenders for those released in 1979 and 1980. (Tables 25 and 28)
- Had the Department not experienced the "relief" of the short-term determinates being released in 1979 and 1980, it is anticipated the overall length of stay for adult felons would have continued to increase in 1980. (Tables 25, 28 and 31)

FIGURE I. AVERAGE LENGTH OF STAY  
FOR ADULT FELONS

AVERAGE TIME  
SERVED

.....\*

—▲—



ILLINOIS DEPT. OF CORRECTIONS  
POLICY DEVELOPMENT

TABLE 25 LENGTH OF STAY FOR ADULT FELONS, 1976-1980

YEAR	CASES	TIME SERVED			PRISON STAY		
		AVERAGE	SHORTEST	LONGEST	AVERAGE	SHORTEST	LONGEST
1976	2,696	2.4	.07	39.4	1.9	.01	39.4
1977	3,511	2.3	.02	31.8	1.8	.01	31.5
1978	4,139	2.5	.09	39.2	2.0	.00	38.8
1979	3,376	2.6	.15	45.0	2.1	.01	45.0
1980	1,640	2.4	.09	21.6	1.9	.01	21.1

TABLE 26 LENGTH OF STAY FOR ADULT FELONS BY COUNTY, 1976-1980

YEAR/COUNTY	CASES	TIME SERVED			PRISON STAY		
		AVERAGE	SHORTEST	LONGEST	AVERAGE	SHORTEST	LONGEST
1976							
-Cook	1,527	2.6	.07	39.4	1.9	.01	39.4
-Other	1,169	2.2	.32	35.1	1.9	.02	35.1
1977							
-Cook	1,880	2.4	.02	31.8	1.7	.01	31.6
-Other	1,630	2.1	.44	28.5	1.8	.06	28.4
1978							
-Cook	2,360	2.7	.09	28.9	2.0	.01	28.4
-Other	1,778	2.4	.20	39.1	2.1	.00	38.9
1979							
-Cook	1,995	2.7	.20	45.0	2.1	.01	45.0
-Other	1,381	2.5	.15	24.0	2.1	.01	18.0
1980							
-Cook	993	2.5	.09	21.6	2.0	.01	21.1
-Other	647	2.2	.28	15.0	1.9	.02	14.1

TABLE 27 LENGTH OF STAY FOR ADULT FELONS BY OFFENSE, 1976-1980

OFFENSE/YEAR	CASES	TIME SERVED			PRISON STAY		
		AVERAGE	SHORTEST	LONGEST	AVERAGE	SHORTEST	LONGEST
MURDER (M)							
1976	64	9.8	2.2	27.5	9.1	.98	27.4
1977	42	9.2	1.1	28.5	7.8	.54	28.4
1978	75	10.7	1.6	39.2	9.2	.50	38.8
1979	93	10.1	3.2	25.7	8.2	.18	18.0
1980	39	8.2	2.5	13.5	6.8	1.10	12.6
ATTEMPTED MURDER (X)							
1976	44	4.0	1.4	9.2	3.1	.89	8.1
1977	48	4.2	1.6	12.1	3.5	.66	11.8
1978	86	4.1	1.0	11.8	3.2	.75	11.3
1979	84	3.6	1.0	9.8	2.7	.12	9.1
1980	42	3.7	1.5	7.4	2.8	.13	6.7
VOLUNTARY MANSLAUGHTER (2)							
1976	118	3.8	.77	19.0	3.0	.01	17.9
1977	123	3.8	.71	10.9	2.9	.09	9.8
1978	146	3.4	.65	9.6	2.5	.01	8.5
1979	155	3.2	.71	11.1	2.3	.01	10.5
1980	87	3.2	.50	15.0	2.4	.01	14.1
RAPE (X)							
1976	62	5.5	2.1	16.5	4.8	.21	15.8
1977	97	4.8	1.7	31.8	4.1	.11	31.5
1978	117	4.9	1.2	22.5	4.1	.30	22.2
1979	111	4.8	1.1	15.6	4.1	.06	13.8
1980	67	4.3	2.0	12.7	3.7	.07	11.6
ROBBERY (2)							
1976	466	1.7	.13	5.7	1.2	.01	4.8
1977	610	1.9	.11	6.4	1.4	.01	6.1
1978	663	2.0	.10	11.7	1.6	.01	11.4
1979	410	2.1	.23	10.2	1.6	.02	7.3
1980	183	2.0	.09	7.9	1.5	.09	6.7

TABLE 27 (CONTINUED) LENGTH OF STAY FOR ADULT FELONS BY OFFENSE, 1976-1980

OFFENSE/YEAR	CASES	TIME SERVED			PRISON STAY		
		AVERAGE	SHORTEST	LONGEST	AVERAGE	SHORTEST	LONGEST
UNLAWFUL USE OF WEAPONS (3)							
1976	42	1.4	.07	4.6	.9	.02	3.5
1977	44	1.9	.61	6.0	1.5	.06	4.9
1978	51	2.0	.27	8.6	1.5	.02	6.3
1979	40	1.3	.20	6.3	1.0	.09	5.9
1980	14	1.3	.70	2.5	.9	.01	2.3
OTHER CLASS X							
1976	33	2.9	1.1	8.1	2.6	.30	7.4
1977	37	2.9	1.2	9.7	2.4	.01	9.3
1978	36	3.2	1.0	10.7	2.8	.96	9.0
1979	48	3.5	1.0	9.1	3.0	.63	8.1
1980	23	3.2	1.5	6.6	2.4	1.00	4.7
CLASS 1							
1976	40	3.7	.75	10.7	3.1	.02	10.3
1977	40	3.1	.74	9.6	2.2	.01	7.0
1978	94	3.1	.50	11.2	2.6	.05	9.7
1979	98	2.9	.46	20.7	2.4	.04	20.4
1980	46	3.0	.50	6.4	2.4	.08	6.2
OTHER CLASS 2							
1976	42	2.5	.63	9.3	2.0	.26	6.9
1977	56	2.0	.68	8.5	1.5	.02	5.0
1978	77	2.6	.62	8.9	2.2	.01	7.7
1979	59	2.3	.60	9.7	2.0	.11	8.9
1980	40	2.1	.42	12.5	1.7	.20	12.2
OTHER CLASS 3							
1976	87	1.9	.43	8.7	1.4	.09	7.8
1977	114	1.8	.20	9.0	1.3	.01	9.0
1978	144	2.0	.26	8.2	1.6	.01	5.8
1979	129	1.8	.15	11.9	1.4	.01	11.5
1980	60	1.5	.50	7.0	1.2	.03	6.5

TABLE 27 (CONTINUED) LENGTH OF STAY FOR ADULT FELONS BY OFFENSE, 1976-1980

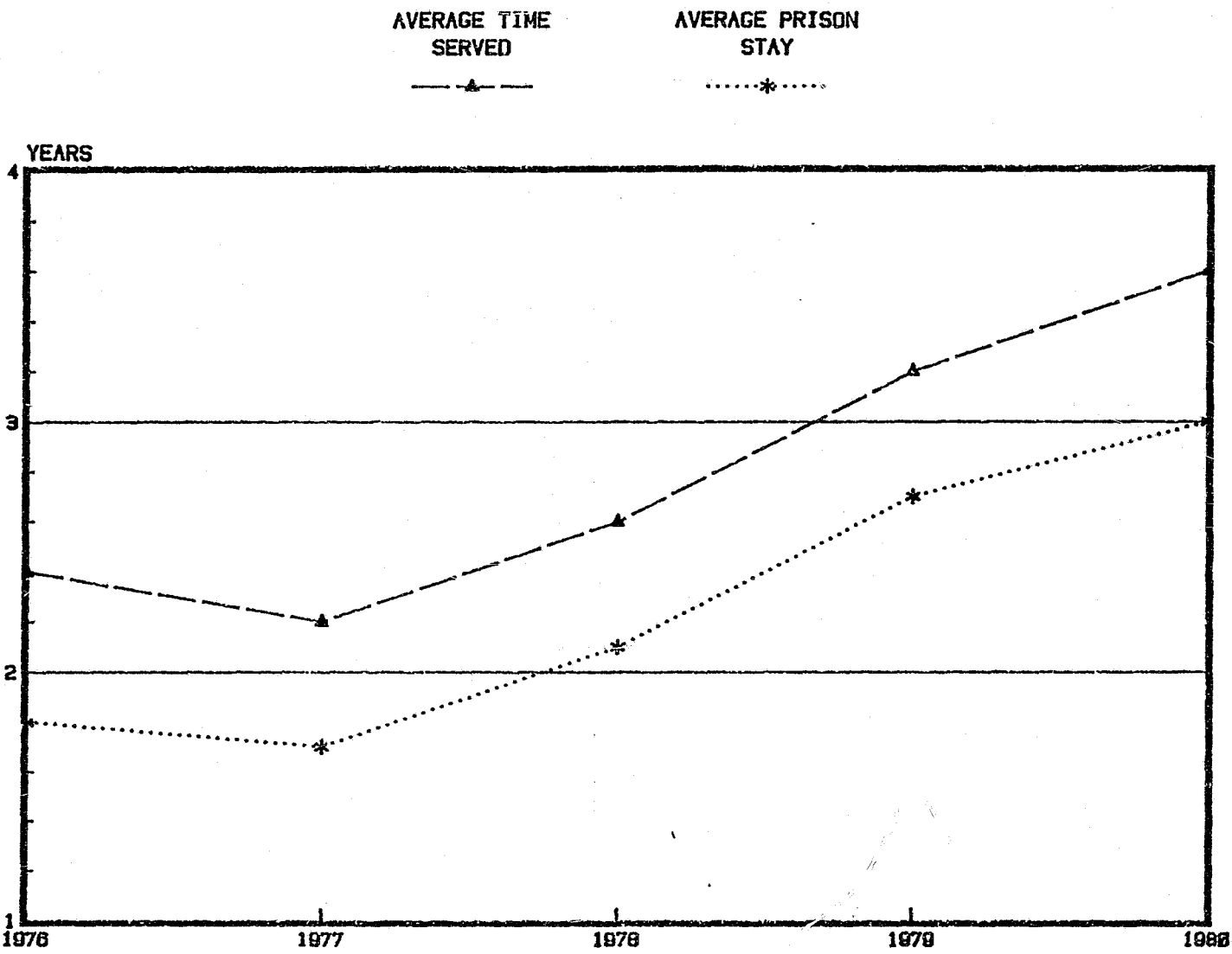
OFFENSE/YEAR	CASES	TIME SERVED			PRISON STAY		
		AVERAGE	SHORTEST	LONGEST	AVERAGE	SHORTEST	LONGEST
ARMED ROBBERY (X)							
1976	324	3.7	1.3	39.4	2.9	.05	39.4
1977	401	3.5	1.3	14.0	2.7	.01	11.1
1978	571	3.8	1.1	28.9	3.0	.00	28.4
1979	624	3.7	1.1	45.0	3.0	.02	45.0
1980	276	3.3	1.1	21.6	2.8	.24	21.1
AGGRAVATED BATTERY (3)							
1976	124	2.0	.70	6.5	1.4	.05	5.9
1977	150	1.9	.65	8.2	1.5	.01	7.9
1978	208	2.3	.33	12.9	1.8	.01	5.5
1979	176	1.8	.57	8.5	1.4	.02	8.2
1980	70	1.8	.49	5.2	1.4	.01	4.9
BURGLARY (2)							
1976	704	1.7	.11	35.1	1.3	.01	35.1
1977	972	1.8	.02	14.5	1.4	.01	10.2
1978	1,024	1.8	.20	24.2	1.5	.01	18.2
1979	565	2.1	.32	17.2	1.7	.01	16.8
1980	305	1.9	.26	9.2	1.5	.07	8.7
THEFT (3)							
1976	185	1.5	.34	8.7	1.2	.01	8.6
1977	239	1.6	.55	6.7	1.3	.05	6.2
1978	301	1.5	.49	5.8	1.2	.01	5.8
1979	322	1.3	.29	7.3	1.0	.01	7.1
1980	179	1.2	.10	6.0	.9	.02	5.6
FORGERY (3)							
1976	78	1.7	.71	5.9	1.4	.30	4.5
1977	106	1.7	.63	13.9	1.4	.10	11.5
1978	99	1.7	.55	10.3	1.3	.12	9.8
1979	78	1.3	.60	3.7	1.0	.02	3.6
1980	39	1.5	.28	7.4	1.1	.20	3.4

TABLE 27 (CONTINUED) LENGTH OF STAY FOR ADULT FELONS BY OFFENSE, 1976-1980

OFFENSE/YEAR	CASES	AVERAGE	TIME SERVED		AVERAGE	PRISON STAY		LONGEST
			SHORTEST	LONGEST		SHORTEST	LONGEST	
CLASS 4								
1976	20	1.2	.72	2.1	.92	.08	2.1	
1977	35	1.2	.64	3.7	.87	.01	3.7	
1978	51	1.1	.49	4.0	.82	.03	3.6	
1979	77	.8	.49	2.6	.58	.01	2.3	
1980	41	.9	.33	3.4	.66	.01	3.2	

54

FIGURE J. AVERAGE LENGTH OF STAY  
FOR INDETERMINATE CASES



55

TABLE 28 LENGTH OF STAY FOR INDETERMINATE CASES, 1976-1980

YEAR	CASES	TIME SERVED			PRISON STAY		
		AVERAGE	SHORTEST	LONGEST	AVERAGE	SHORTEST	LONGEST
1976	2,683	2.4	.07	39.4	1.8	.01	39.4
1977	3,505	2.2	.02	28.5	1.7	.01	28.4
1978	3,967	2.6	.10	39.2	2.1	.01	38.8
1979	2,285	3.2	.32	45.0	2.7	.01	45.0
1980	731	3.6	.09	21.6	3.0	.09	21.1

TABLE 29 LENGTH OF STAY FOR INDETERMINATE CASES BY COUNTY, 1976-1980

YEAR/COUNTY	CASES	TIME SERVED			PRISON STAY		
		AVERAGE	SHORTEST	LONGEST	AVERAGE	SHORTEST	LONGEST
1976							
-Cook	1,519	2.48	.07	39.43	1.82	.01	39.43
-Other	1,181	2.15	.32	35.10	1.85	.02	35.10
1977							
-Cook	1,878	2.34	.02	14.05	1.70	.01	13.47
-Other	1,629	2.10	.44	28.46	1.79	.06	28.38
1978							
-Cook	2,238	2.74	.10	28.87	2.06	.01	28.38
-Other	1,731	2.36	.50	39.15	2.07	.04	38.82
1979							
-Cook	1,363	3.33	.46	44.96	2.62	.01	44.96
-Other	922	3.09	.32	24.03	2.75	.14	16.79
1980							
-Cook	457	3.71	.09	21.58	3.02	.09	21.12
-Other	274	3.38	.33	15.01	2.94	.15	14.12

TABLE 30 LENGTH OF STAY FOR INDETERMINATE CASES BY OFFENSE, 1976-1980

OFFENSE/YEAR	CASES	TIME SERVED			PRISON STAY		
		AVERAGE	SHORTEST	LONGEST	AVERAGE	SHORTEST	LONGEST
MURDER (M)							
1976	59	9.2	2.2	27.5	8.4	.98	27.4
1977	41	9.1	1.1	28.5	8.0	1.00	28.4
1978	71	10.2	1.6	39.2	8.6	.50	38.8
1979	90	9.7	3.2	24.0	8.1	.18	15.7
1980	39	8.2	2.5	13.5	6.8	1.10	12.6
ATTEMPTED MURDER (X)							
1976	44	4.0	1.4	9.2	3.1	.89	8.1
1977	48	4.2	1.6	12.1	3.5	.66	11.8
1978	84	4.2	1.0	11.7	3.3	.75	11.3
1979	73	3.9	1.2	9.8	3.0	.47	9.1
1980	32	4.1	1.9	7.4	3.2	1.50	6.7
VOLUNTARY MANSLAUGHTER (2)							
1976	118	3.8	.77	19.0	3.0	.01	17.9
1977	128	3.8	.71	10.9	3.0	.09	9.8
1978	133	3.6	.65	9.6	2.7	.02	8.5
1979	110	3.7	.91	11.1	2.9	.05	10.5
1980	46	4.3	.50	15.0	3.6	.37	14.1
RAPE (X)							
1976	59	5.0	2.1	15.3	4.3	.21	14.6
1977	95	4.4	1.7	13.6	3.7	.11	13.0
1978	116	4.8	1.2	14.6	4.0	.30	14.6
1979	109	4.8	1.6	15.6	4.1	.06	13.8
1980	62	4.4	2.0	12.7	4.0	1.50	11.6
ROBBERY (2)							
1976	446	1.7	.13	5.7	1.2	.01	4.8
1977	610	1.9	.11	6.4	1.4	.01	6.1
1978	646	2.1	.10	11.7	1.6	.03	11.4
1979	289	2.3	.46	10.2	1.8	.11	7.3
1980	50	2.8	.09	7.9	2.2	.09	6.7



TABLE 30 (CONTINUED) LENGTH OF STAY FOR INDETERMINATE CASES BY OFFENSE, 1976-1980

OFFENSE/YEAR	CASES	TIME SERVED			PRISON STAY		
		AVERAGE	SHORTEST	LONGEST	AVERAGE	SHORTEST	LONGEST
ARMED ROBBERY (X)							
1976	323	3.7	1.3	39.4	2.9	.05	39.4
1977	401	3.5	1.3	14.0	2.7	.01	11.1
1978	566	3.9	1.1	28.9	3.1	.04	28.4
1979	599	3.7	1.4	45.0	3.0	.14	45.0
1980	264	3.4	1.1	21.6	2.8	.24	21.1
AGGRAVATED BATTERY (3)							
1976	124	2.0	.70	6.5	1.4	.05	5.9
1977	150	1.9	.65	8.2	1.5	.01	7.9
1978	198	2.3	.45	12.9	1.8	.01	5.5
1979	91	2.3	.61	8.5	1.9	.24	8.2
1980	20	2.6	.49	5.2	2.2	.34	4.9
BURGLARY (2)							
1976	704	1.7	.11	35.1	1.3	.01	35.1
1977	972	1.8	.02	14.5	1.4	.01	10.2
1978	1,007	1.8	.30	11.3	1.5	.01	11.2
1979	382	2.4	.32	17.2	2.0	.01	16.8
1980	87	2.5	.33	9.2	2.1	.15	8.7
THEFT (3)							
1976	184	1.5	.66	8.7	1.2	.01	8.6
1977	239	1.6	.55	6.7	1.3	.05	6.2
1978	265	1.6	.54	5.8	1.3	.01	5.8
1979	93	2.0	.50	7.3	1.6	.02	7.1
1980	14	2.4	.46	6.0	2.2	.44	5.6
FORGERY (3)							
1976	77	1.7	.71	4.7	1.4	.30	4.5
1977	106	1.8	.63	13.9	1.4	.10	11.5
1978	97	1.7	.55	10.3	1.3	.12	9.8
1979	29	1.7	.60	3.7	1.2	.17	3.6
1980	4	3.7	.61	7.4	2.0	.42	3.4

TABLE 30 (CONTINUED) LENGTH OF STAY FOR INDETERMINATE CASES BY OFFENSE, 1976-1980

OFFENSE/YEAR	CASES	TIME SERVED			PRISON STAY		
		AVERAGE	SHORTEST	LONGEST	AVERAGE	SHORTEST	LONGEST
UNLAWFUL USE OF WEAPONS (3)							
1976	42	1.4	.07	4.6	.9	.02	3.5
1977	44	1.9	.61	5.9	1.5	.06	4.9
1978	50	2.0	.27	8.6	1.5	.02	6.3
1979	17	1.6	.54	6.3	1.3	.22	5.9
1980	2	2.3	2.14	2.5	2.2	2.04	2.3
OTHER CLASS X							
1976	33	2.9	1.1	8.1	2.6	.30	7.4
1977	37	2.9	1.2	9.7	2.4	.01	9.3
1978	36	3.2	1.0	10.7	2.8	.96	9.0
1979	43	3.7	1.0	9.1	3.2	.83	8.1
1980	20	3.3	1.7	6.6	2.6	1.20	4.7
CLASS 1							
1976	40	3.70	.75	10.7	3.1	.02	10.3
1977	40	3.10	.74	9.6	2.2	.01	7.0
1978	89	3.20	.50	11.2	2.7	.09	9.7
1979	75	3.30	.72	20.7	2.9	.13	20.4
1980	31	3.62	.67	6.4	3.0	.44	6.2
OTHER CLASS 2							
1976	42	2.50	.63	9.3	1.5	.26	6.8
1977	55	2.00	.68	8.5	1.5	.02	5.0
1978	75	2.60	.62	8.9	2.2	.04	7.7
1979	40	2.80	.60	9.7	2.5	.46	8.9
1980	15	3.17	1.50	12.5	2.8	.93	12.2
OTHER CLASS 3							
1976	87	1.90	.43	8.6	1.3	.09	7.8
1977	114	1.80	.20	9.0	1.3	.01	9.0
1978	135	2.10	.26	8.2	1.7	.03	5.8
1979	59	2.70	.60	11.9	2.2	.17	11.5
1980	8	3.59	2.03	7.0	3.2	1.20	6.4

TABLE 30 (CONTINUED) LENGTH OF STAY FOR INDETERMINATE CASES BY OFFENSE, 1976-1980

OFFENSE/YEAR	CASES	TIME SERVED			PRISON STAY		
		AVERAGE	SHORTEST	LONGEST	AVERAGE	SHORTEST	LONGEST
CLASS 4							
1976	20	1.20	.72	2.1	.90	.08	2.1
1977	35	1.20	.64	3.7	.90	.01	3.7
1978	30	1.30	.59	4.0	1.10	.05	3.6
1979	9	1.40	.61	2.6	1.30	.50	2.3
1980	1	3.39	3.39	3.4	3.20	3.18	3.2

TABLE 31 LENGTH OF STAY FOR DETERMINATE CASES, 1978-1980

YEAR	CASES	TIME SERVED			PRISON STAY		
		AVERAGE	SHORTEST	LONGEST	AVERAGE	SHORTEST	LONGEST
1978	153	1.2	.09	4.0	.3	.00	.8
1979	1,080	1.3	.15	5.0	.8	.01	1.9
1980	908	1.4	.10	3.5	1.0	.01	2.4

TABLE 32 LENGTH OF STAY FOR DETERMINATE CASES  
RELEASED IN 1980 BY SELECTED OFFENSES

OFFENSE	CASES	TIME SERVED			PRISON STAY		
		AVERAGE	SHORTEST	LONGEST	AVERAGE	SHORTEST	LONGEST
ROBBERY (2)	131	1.7	.5	3.5	1.3	.2	2.2
AGGRAVATED BATTERY (3)	50	1.5	1.0	3.0	1.0	.0	2.4
BURGLARY (2)	218	1.6	0.3	2.7	1.2	.1	2.0
THEFT (3)	165	1.1	0.1	2.5	.8	.0	2.1
FORGERY (3)	35	1.3	.3	2.0	1.0	.2	2.0

TABLE 33 LENGTH OF STAY FOR MISDEMEANOR CASES, 1976-1980

YEAR	CASES	TIME SERVED			PRISON STAY		
		AVERAGE	SHORTEST	LONGEST	AVERAGE	SHORTEST	LONGEST
1976	691	0.42	0.10	1.00	0.34	0.01	0.85
1977	565	0.46	0.10	0.93	0.37	0.01	0.83
1978	347	0.43	0.11	0.99	0.36	0.02	0.91
1979	330	0.46	0.10	0.87	0.37	0.01	0.79
1980	171	0.44	0.11	0.76	0.37	0.07	0.68

## SENTENCING IMPACT CONSIDERATION

Determinate sentencing legislation was enacted in Illinois on February 1, 1978. The newly implemented statutes culminated a long iterative process of modifications to proposed legislation. Previous to 1978, Illinois sentencing had been indeterminate. Under this sentencing system, a sentence range was imposed by the judge and eligibility for parole was statutorily defined and releases were made by the Parole Board.

Under the newly adopted law, offenses were re-categorized from five into six felony classes. The offense of murder and offenses in the newly created Class X are non-probationable. Probation is presumed for most other offenses unless just cause for a sentence of imprisonment can be shown. A range of sentences is specified for each class from which judges impose a fixed or flat sentence. Good time credits are earned at a rate of one day off the sentence for every day of good behavior. All offenders are released from prison (parole discretion was abolished) at the end of their term to a period of mandatory community supervision. The length of supervision depends upon the class of offense (See Table 41).

The Illinois Sentencing Commission was established by law (Illinois Revised Statutes, Chapter 38, 1005-10-1 and 2) to monitor the impact of determinate sentencing and promote fair sentencing practices. Each year the Commission is responsible for publishing an annual report on the sentencing impact of the legislation enacted in 1978.

Two years have been an insufficient period of time to establish empirical proof of the impact of determinate sentencing. It is, however, adequate time to compile descriptive information on aspects of sentencing impact. In subsequent pages, based on data available to the Department, some initial comments and data are provided. Before proceeding to that discussion, it is useful to have an overview of certain crime and justice statistics before and after the implementation of determinant sentencing.

### Illinois Descriptive Criminal Justice Data

Table 34 shows the Illinois arrest rates for the years 1972-1980. The data are derived from Illinois Law Enforcement UCR Data, 1972-1980. The figures shown are statewide totals. The rates are computed per 100,000 of the general Illinois population.

Although down from earlier years, recent trends show an increase in arrest rates. Arrest for property crime consistently comprises the higher portion of total arrests in Illinois. Arrest rates for property crime show a continual increase since 1977.

SENTENCING IMPACT CONSIDERATION

Table 35 shows the disposition of defendants charged with felonies. Care must be taken not to overinterpret data from this table. The data are derived from annual reports of the Administrative Office of the Illinois Courts which provide extensive explanations regarding changes in court reporting procedures. The different reporting practices of Cook and Other Counties' courts have been extreme over the last several years. However, outstanding efforts have been made in the last two years in standardizing both definitions and the reporting base.

Table 35 shows the percentage of total defendant cases which are convicted, not convicted, or unfit to stand trial. This number is a defendant count. In the following tables, number of defendants and number of people are not the same. One person could be a defendant in several cases and, as such, would be counted more than once. Number of defendants is also not the same as number of cases since there could be several defendants in one case.

Due to the reporting idiosyncrasies noted earlier, the best use of data from Table 35 is to observe the trend over the years. The percentage of total dispositions resulting in convictions has remained around 45-55 percent. It is important to note that while the proportion of convictions has not fluctuated dramatically, the increase in actual number of defendant cases has increased significantly from 30,661 in 1974 to 41,901 in 1979, a 27 percent increase.

Information in Table 36 is also from the annual reports of the Supreme Court of Illinois, as prepared by the Administrative Office of the Illinois Courts. Table 36 shows the types of sentences imposed on felony convictions.

It is important to note the sizable increase in the raw number of defendant cases receiving prison sentences. The percentage of convictions resulting in a prison sentence has remained around 36-40 percent over the period from 1973-1980. Thus, while the proportion of people receiving prison sentences (compared to other sentences) has remained nearly the same, over the years there has been a substantial increase in actual numbers of people receiving prison sentences.

Prison Intake and Sentences Imposed

Figures K-L graphically display the increase in intake that the Department of Corrections has experienced over the last several years. On Figure K monthly admissions (admission directly from court and parole revocations re-admitted) are plotted from January, 1965, through December, 1980. The dark trend line illustrates the direction and gravity of changes in prison intake. Figure L shows only the admissions directly from the courts, excluding re-admissions. Figure M shows the misdemeanor admissions to the Department. Misdemeanor admissions have generally been decreasing since 1967.

SENTENCING IMPACT CONSIDERATION

There has been a gradual steady increase in new felony admissions since 1973. This trend started five years prior to the inception of the new law. Exclusive of other factors, determinate sentencing can not be shown to be the cause of the increase in prison admissions. According to data previously presented, determinate sentencing has not resulted in a dramatic change in proportions of convictions or the use of imprisonment. Yet it is clear that larger numbers of persons are coming into the Department.

Table 37 and Table 38 shows the percentage of offenders coming into the Department by class of offense for which they were committed. For purposes of comparison, offenses for all years were converted to the same offense classification. For example, in 1976 armed robbery was categorized as a Class 1 offense under the old statutes; for this report, armed robbery has been converted to the determinate offense classification of Class X. Throughout this table, all offenses have been consistently categorized as defined by the new statute of 1978. In Table 37, data are reported by offense case. Each offense, for which an offender was ever admitted is treated as a separate case and is reported as such by class of offense.

In Table 38, the class of offense listed refers to the class for the "highest" offense for which a person is sentenced on their first commitment to the Department. Highest offense is defined as the offense representing the highest class.

Part of the provisions of the new sentencing law made certain offenses non-probationable. Those offenses now requiring a prison sentence that were not perviously mandated fall into the Class X category. Review of data from Table 37 and 38 indicate that the percentage which those offenses represent of intake (either by offense case or offender) has not changed appreciably. In fact, for Class X offenses, the percentage of intake has declined from previous years. In terms of sentencing performance under the new law, generally those Class X offenders, who are being sentenced to prison because such sentence is now mandatory for their offenses, were being sentenced to prison under the old law.

Tables 37 and 38 yield other salient information. Misdemeanant sentences are a decreasing percentage of intake from 1976 through 1980. Class 2 offenses are also showing a decreasing representation of intake over the years reported although these offenses (primarily burglary, robbery, and voluntary manslaughter) still comprise the largest class of intake (30-40 percent). Over the five year period, Class 3 offenses, comprising about 15-25 percent of intake, show a steady increase in percentage of intake. Though an increase over 1976, the percentage Class 1 and Class 4 offenses represent of total intake has decreased since 1979. According to data from Table 38, when looking at the highest offense, murder comprises a larger percentage of intake in 1980 compared to 1976, 5 percent to 3.5 percent.

## SENTENCING IMPACT CONSIDERATION

Regarding the length of sentences imposed under indeterminate and determinate sentencing, the following comments summarize observations made under the first section of this report (Tables 1-24, Figures A-H). Reviewing data from 1976-1978 on indeterminate sentence lengths, there is an increase in the terms (minimum and maximum) imposed for murder, rape, armed robbery and aggravated battery. Class 1 offenses and voluntary manslaughter are showing a slight decrease in terms imposed while sentences for other offenses have remained relatively stable over the three year period.

Initial observations of prison terms under determinate sentencing reveal an increase from 1978 through 1980 in sentence lengths for attempted murder, rape, armed robbery, other Class X, and Class 1 offenses. Fluctuations in determinate sentences for most other offenses have been slight.

Under indeterminate statutes, Other Counties have given slightly higher prison terms than Cook for the same offenses. This difference is most noticeable for the offenses of murder and rape. Under determinate sentencing, there is some indication that generally the difference in the length of term imposed by Cook and Other Counties is lessening.

In 1980, over 75 percent of the determinate sentences imposed were for terms of less than 7 years.

Available data on length of determinate sentences imposed comparing White and Non-White offenders reveal no particular patterns. The differences in terms are not dramatic and vary according to the offense. For some offenses, the average sentence received by Whites is slightly longer; for other offenses, the average sentence received by Non-Whites is longer.

### Length of Stay and Prison Population

Observations discussed here are made primarily from data provided in preceding sections of this report. As stated earlier, the overall average length of stay for adult felons has remained around 2.5 years from 1976-1980. However, excluding the "windfall" of short-term determinate releases, the average stay of adult felons increased from 1977 to 1980 (Tables 24 and 28).

The average length of stay for offenders (excluding determinates) released in 1978 and 1979 represents a tendency toward longer prison stays under indeterminate sentencing. Sufficient time has not yet passed that we may begin to make an actual assessment whether offenders with a determinate sentence will spend more time in prison than they would have under indeterminate laws. We must still rely on estimates to evaluate the average length of stay under the new laws.

## SENTENCING IMPACT CONSIDERATION

Table 39 compares the average time served under indeterminate sentences with the estimated time that will be served by offenders given determinate sentences in 1980. The former is computed by averaging over the period from 1976-1980 the average time served by offenders with indeterminate sentences. The latter is computed by dividing the average sentence imposed by two. This calculation assumes the day for day good time earnings allowed offenders. This computation doesn't take into account any calculation of good time earnings lost during a prison stay. Both columns of figures are expressed in years and refer to time served (regardless of the portion spent in jail or prison).

Data from Table 39 provide only a rough estimate of the difference in length of stay under indeterminate and determinate sentencing practices. To understand the actual impact of changing length of time served on prison population (short of waiting several more years to calculate time served after substantial determinate offenders have been released) a thorough analysis of time spent in jail versus time in prison and amount of good time lost is necessary. It does appear, from the rudimentary information provided in Table 39, that offenders committed for Murder, Class X, and Class 1 offenses will serve more time under determinate statutes than they would have under indeterminate laws. However, for several other offenses (most Class 2, 3, and 4 offenses excluding burglary) offenders will serve less time.

Utilizing data from Table 39, an estimated average length of stay for adult felons under determinate statutes is 2.9 years compared to the previous stay average under indeterminate laws of 2.5 years. This implies an increase of 4.8 months on the average will be served by adult felons on prison sentences. This does not include computation of good time losses.

A by-product of the changes in prison stay is the composition by offense category of the prison population. As length of stay increases for selected offense groups (as is suggested by data from Table 39), the greater the proportion these groups will comprise of the in-prison population, given the offense composition of intake remains the same (as indicated in Tables 37 and 38).

Table 40 shows an increase in the proportion of Class X offenders in the prison population. Class X offenses represent the largest group of offenders for which greater lengths of stay are estimated. Changes in the composition of prison populations have far reaching implications for management of security and programs.

## SENTENCING IMPACT CONSIDERATION

There is a need to continue the assessment of the impact of determinant sentencing on the public safety, the courts, and the prisons. As the data becomes available from law enforcement, the courts, and corrections, more types of analyses will need to be undertaken. The report pertains only to corrections data. In future years, reports will be concerned with the effects of determinant sentencing on such areas as the prison environment, good time earnings, and parole and community supervision.

TABLE 34 ILLINOIS ARREST RATES, 1972-1980

YEAR	TOTAL ARREST RATE	VIOLENT CRIME ARREST RATE	PROPERTY CRIME ARREST RATE
1972	876.8	211.7	666.1
1973	915.9	213.3	702.6
1974	1,074.9	231.5	843.5
1975	1,131.6	218.1	913.5
1976	1,062.2	185.3	876.7
1977	1,036.5	159.6	876.8
1978	1,074.6	169.4	905.2
1979	1,089.4	177.9	911.5
1980	1,280.2	258.2	1,022.0

TABLE 35 DISPOSITION OF DEFENDANTS CHARGED WITH FELONIES

YEAR	TOTAL NUMBER DISPOSED	% NOT CONVICTED	% CONVICTED	% UNFIT TO STAND TRIAL
1973	22,038	57.3	40.0	2.7
1974	30,661	54.3	44.3	1.4
1975	37,152	52.2	46.8	1.0
1976	38,408	50.5	48.5	1.0
1977	38,008	46.6	53.1	.3
1978	38,511	45.2	54.5	.3
1979	41,901	45.7	53.8	.5
1980	48,211	45.8	53.3	.9

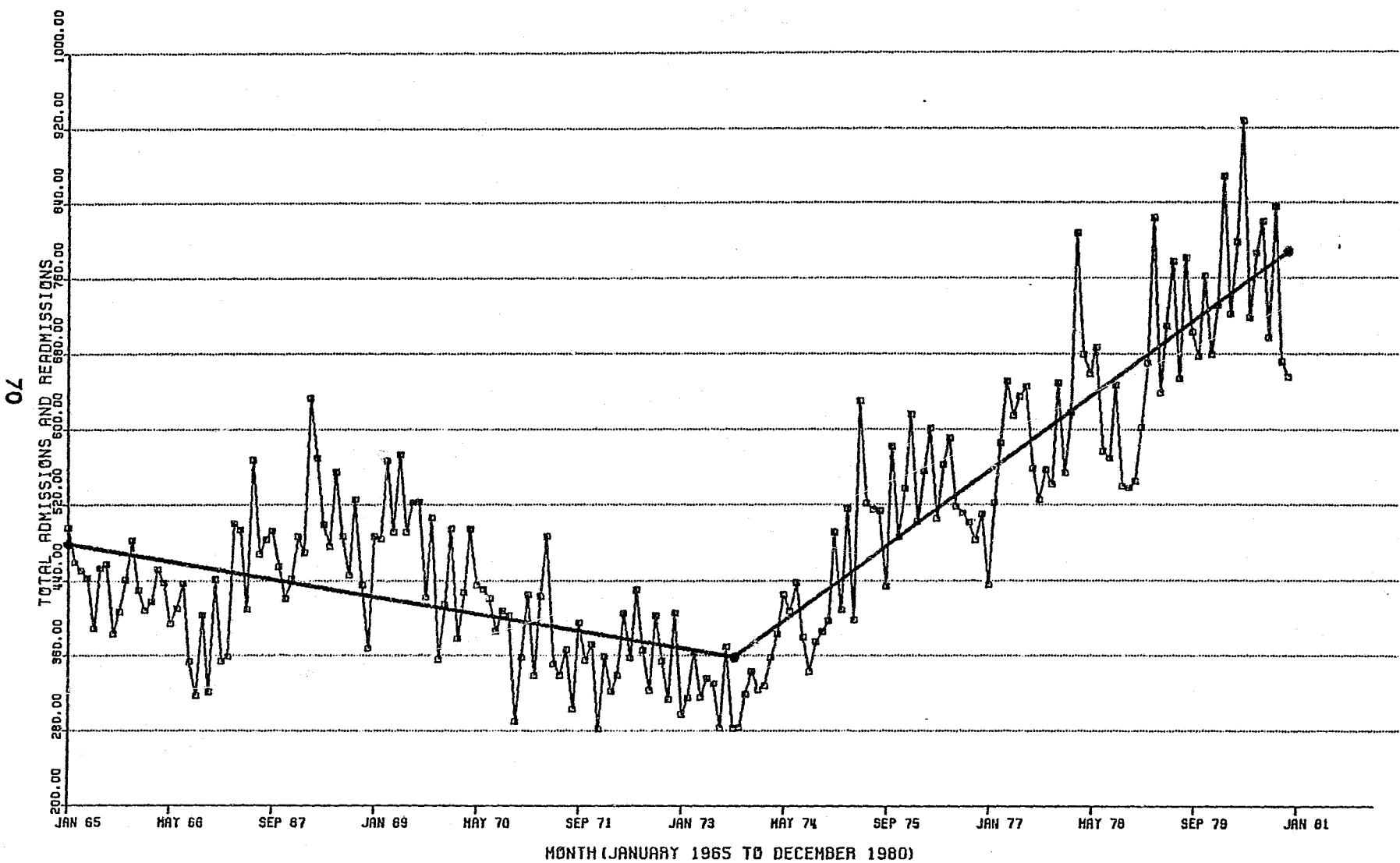
TABLE 36 TYPES OF SENTENCES IMPOSED ON  
DEFENDANTS CHARGED WITH FELONIES, 1973-1980

YEAR	TOTAL FELONY CONVIC- TIONS	PRISON & DEATH		JAIL		PROBA- TION & JAIL		PROBA- TION		OTHER	
		#	%	#	%	#	%	#	%	#	%
1973	8,826	3,529	40.0	271	3	566	6	4,280	48.5	180	2
1974	13,571	4,937	36.4	244	1.8	1,161	8.5	7,219	53.2	10	0
1975	17,384	6,483	37.3	117	0	1,148	6.6	9,432	54.3	204	1.2
1976	18,606	7,569	40.6	153	0	1,125	6	9,598	51.6	161	0
1977	20,174	7,851	38.9	332	1.6	3,063	14.6	8,902	44.1	25	0
1978	20,982	8,396	40.0	386	1.8	3,741	17.8	8,424	40.1	32	0
1979	22,577	8,517	37.8	603	2.7	3,500	15.5	9,873	43.7	72	0
1980	25,714	9,843	38.3	220	0.9	4,238	16.5	11,397	44.3	16	0

FIGURE K. TOTAL ADMISSIONS AND READMISSIONS TO IDOC: 1965-1980

RAW DATA SERIES = □  
TWO-SEGMENT LINE = ○

TWO-SEGMENT LINE: TURNING POINT = 105.2  
SEGMENT 1 Y-INTERCEPT = 479.689  
SEGMENT 1 SLOPE = -1.159  
SEGMENT 2 SLOPE = 4.952

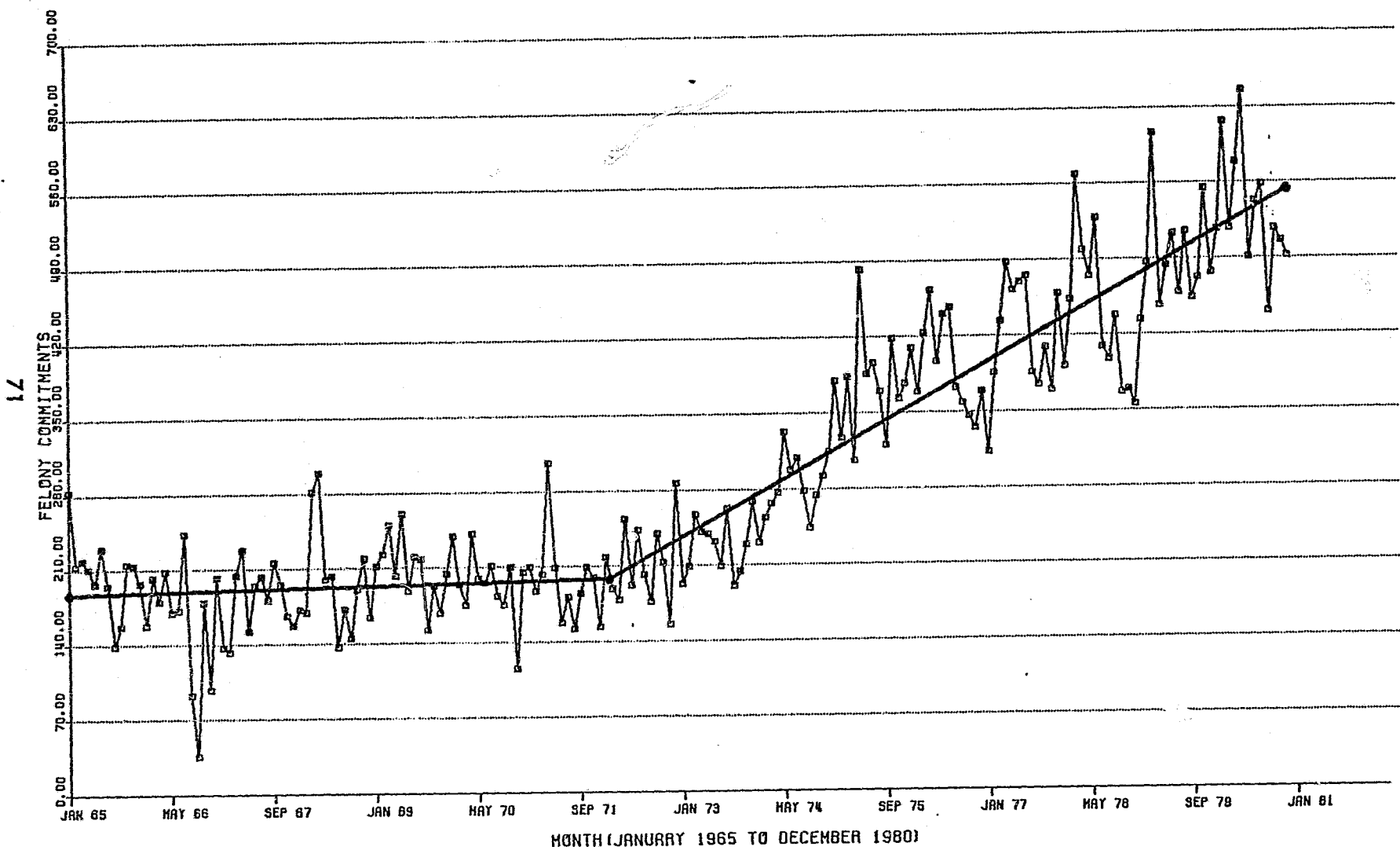


ILLINOIS LAW ENFORCEMENT COMMISSION (CJIS)  
STATISTICAL ANALYSIS CENTER GRAPH

FIGURE L. IDOC FELONY COMMITMENTS FROM COURT: 1965-1980

RAW DATA SERIES = □  
TWO-SEGMENT LINE = ○

TWO-SEGMENT LINE: TURNING POINT = 85.5  
SEGMENT 1 Y-INTERCEPT = 186.534  
SEGMENT 1 SLOPE = 0.132  
SEGMENT 2 SLOPE = 3.339

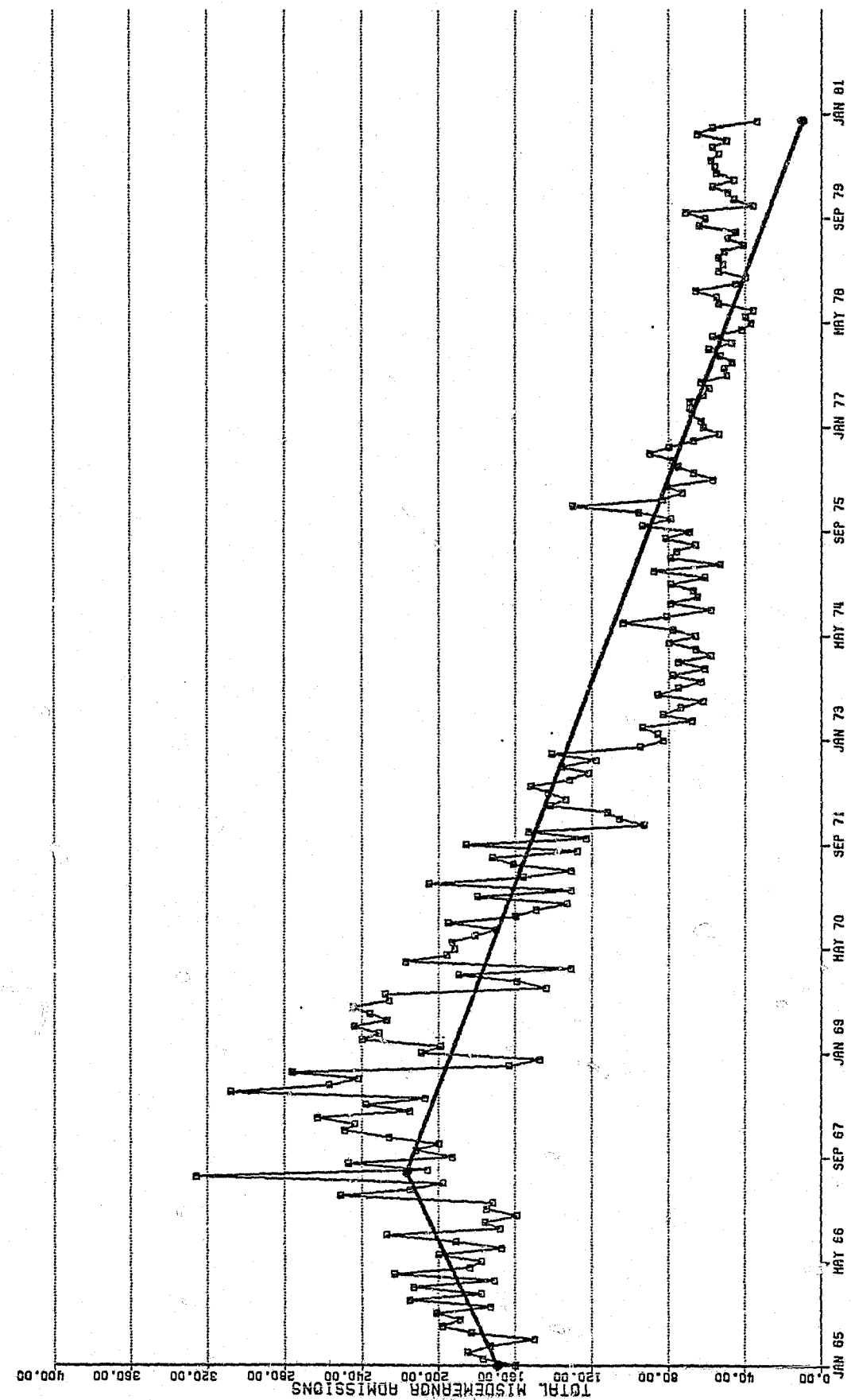


ILLINOIS LAW ENFORCEMENT COMMISSION (CJIS)  
STATISTICAL ANALYSIS CENTER GRAPH



FIGURE M. IDOC MISDEMEANOR ADMISSIONS: 1965-1980

RAW DATA SERIES = □  
TWO-SEGMENT LINE = —  
TWO-SEGMENT LINE: TURNING POINT = 30.7  
SEGMENT 1 Y-INTERCEPT = 167.823  
SEGMENT 1 SLOPE = 1.594  
SEGMENT 2 SLOPE = -1.280



72

ILLINOIS LAW ENFORCEMENT COMMISSION (CJIS)  
STATISTICAL ANALYSIS CENTER GRAPH

TABLE 37 INTAKE DISTRIBUTION OF OFFENSE CASES BY CLASS, 1976-1980

YEAR	MURDER		CLASS X		CLASS 1		CLASS 2		CLASS 3		CLASS 4		MISDEMEANOR	
	#	%	#	%	#	%	#	%	#	%	#	%	#	%
1976	207	2.3	1,636	18.2	166	1.9	3,544	39.5	1,863	20.8	209	2.3	1,344	15.0
1977	252	2.7	1,723	18.4	213	2.3	3,595	38.4	1,995	21.3	343	3.7	1,237	13.2
1978	259	2.6	1,919	19.4	280	2.8	3,591	36.3	2,279	23.0	466	4.7	1,098	11.1
1979	249	2.4	1,802	17.5	361	3.5	3,537	34.3	2,588	25.1	535	5.2	1,227	11.9
1980	311	2.7	1,940	16.8	348	3.0	3,966	34.4	3,040	26.3	565	4.9	1,375	11.9

TABLE 38 INTAKE DISTRIBUTION OF HIGHEST OFFENSE BY CLASS, 1976-1980

YEAR	MURDER		CLASS X		CLASS 1		CLASS 2		CLASS 3		CLASS 4		MISDEMEANOR	
	#	%	#	%	#	%	#	%	#	%	#	%	#	%
1976	179	3.5	955	18.6	79	1.5	2,213	43.0	874	17.4	54	1.0	791	15.4
1977	223	4.3	1,050	20.3	113	2.2	2,221	42.9	868	16.8	70	1.4	631	12.2
1978	221	4.3	1,078	21.0	130	2.6	2,015	39.3	1,038	20.3	146	2.8	495	9.7
1979	209	4.3	931	19.3	161	3.3	1,734	35.9	1,112	23.0	143	3.0	540	11.2
1980	250	5.0	935	18.7	128	2.6	1,807	36.2	1,197	24.0	146	2.9	533	10.7

73

TABLE 39 COMPARISON OF INDETERMINATE LENGTH  
OF STAY WITH ESTIMATED DETERMINATE LENGTH OF STAY

	AVERAGE TIME SERVED FOR INDETERMINATE CASES RELEASED IN 1976-1978	ESTIMATED TIME TO BE SERVED BY DETERMINATE CASES SENTENCED IN 1980
MURDER (M)	9.6	13.6
ATTEMPTED MURDER (X)	4.2	7.5
VOLUNTARY MANSLAUGHTER (2)	3.7	2.6
RAPE (X)	4.7	6.3
ROBBERY (2)	1.9	1.9
ARMED ROBBERY (X)	3.7	5.0
AGGRAVATED BATTERY (3)	2.0	1.6
BURGLARY (2)	1.8	1.9
THEFT (3)	1.6	1.4
FORGERY (3)	1.7	1.4
UNLAWFUL USE OF WEAPONS (3)	1.8	1.5
OTHER CLASS X	3.0	6.2
CLASS 1	3.3	3.8
OTHER CLASS 2	2.4	1.9
OTHER CLASS 3	1.9	1.4
CLASS 4	1.2	1.0

TABLE 40 PERCENTAGE OF CLASS X OFFENDERS  
IN PRISON POPULATION, 1976-1980

	TOTAL OFFENSES	CLASS X OFFENSES	PERCENT OF PRISON POPULATION
1976	9,127	2,503	27.4
1977	10,250	2,453	23.9
1978	10,250	3,202	31.2
1979	12,024	3,736	31.1
1980	12,666	4,369	34.5

TABLE 41 ILLINOIS SENTENCING PRACTICES COMPARISON:  
INDETERMINATE/DETERMINATE

OFFENSE	SENTENCE	
	INDETERMINATE	DETERMINATE
Murder	Death or Imprisonment: Minimum: 14 yrs. Maximum: No Limit Parole term: 5 yrs.	Death or Imprisonment: Minimum: 20 yrs. Maximum: 40 yrs. MSR term: 3 yrs.
Habitual criminal	- no sanction -	Imprisonment: Natural Life
Class X	- no sanction -	Imprisonment: Minimum: 6 yrs. Maximum: 30 yrs. MSR term: 3 yrs.
Class 1	Imprisonment: Minimum: 4 yrs. Maximum: No limit Parole term: 5 yrs. Probation: up to 5 yrs.	Imprisonment: Minimum: 4 yrs. Maximum: 15 yrs. MSR term: 2 yrs. Probation: up to 4 yrs.
Class 2	Imprisonment: Minimum: 1 yr. Maximum: 20 yrs. Parole term: 3 yrs. Probation: up to 5 yrs.	Imprisonment: Minimum: 3 yrs. Maximum: 7 yrs. MSR term: 2 yrs. Probation: up to 4 yrs.
Class 3	Imprisonment: Minimum: 1 yr. Maximum: 10 yrs. Parole term: 3 yrs. Probation: up to 5 yrs.	Imprisonment: Minimum: 2 yrs. Maximum: 5 yrs. MSR term: 1 yr. Probation: up to 30 mo.
Class 4	Imprisonment: Minimum: 1 yr. Maximum: 3 yrs. Parole term: 2 yrs Probation: up to 5 yrs.	Imprisonment: Minimum: 1 yr. Maximum: 3 yrs. MSR term: 1 yr. Probation: up to 30 mo.
Class A Misdemeanor	Imprisonment: Up to 1 yr. Probation: up to 2 yrs.	Imprisonment: Up to 1 yr. Probation: up to 1 yr.
Class B Misdemeanor	Imprisonment: Up to 6 mo. Probation: up to 2 yrs.	Imprisonment: Up to 6 mo. Probation: up to 1 yr.
Class C Misdemeanor	Imprisonment: Up to 30 days Probation: up to 2 yrs.	Imprisonment: Up to 30 days Probation: up to 1 yr.

Planning Unit/Policy Development  
Source: Derived from 1972 Annual Report to the  
Supreme Court and 1980 Chap. 38, Sect. 1005-8-1

**END**