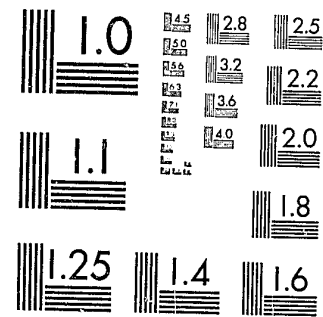


National Criminal Justice Reference Service

ncjrs

This microfiche was produced from documents received for inclusion in the NCJRS data base. Since NCJRS cannot exercise control over the physical condition of the documents submitted, the individual frame quality will vary. The resolution chart on this frame may be used to evaluate the document quality.



MICROCOPY RESOLUTION TEST CHART
NATIONAL BUREAU OF STANDARDS-1963-A

Microfilming procedures used to create this fiche comply with the standards set forth in 41CFR 101-11.504.

Points of view or opinions stated in this document are those of the author(s) and do not represent the official position or policies of the U. S. Department of Justice.

National Institute of Justice
United States Department of Justice
Washington, D. C. 20531

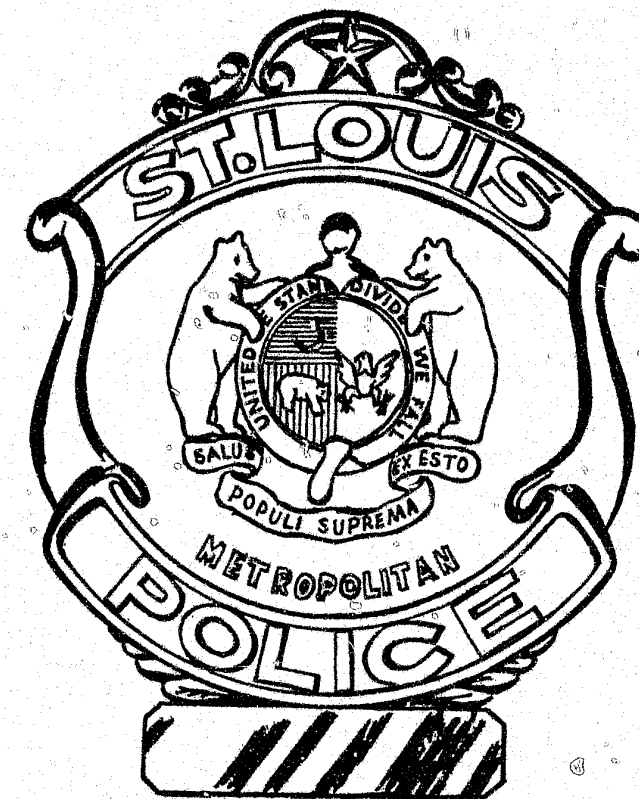
DATE
FILMED
3-21-83

CRSENT
7-8-82

ST. LOUIS METROPOLITAN POLICE DEPARTMENT

1980

1981

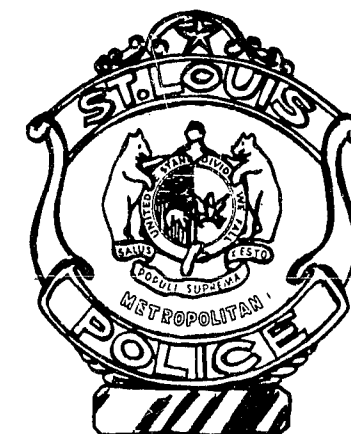


ANNUAL REPORT

82374

1980-81 ANNUAL REPORT

ST. LOUIS METROPOLITAN POLICE DEPARTMENT



U.S. Department of Justice
National Institute of Justice

82374

This document has been reproduced exactly as received from the person or organization originating it. Points of view or opinions stated in this document are those of the authors and do not necessarily represent the official position or policies of the National Institute of Justice.

Permission to reproduce this copyrighted material has been granted by

Hugh A. Donnelly

to the National Criminal Justice Reference Service (NCJRS).

Further reproduction outside of the NCJRS system requires permission of the copyright owner.

CONTENTS

- 2 Letter of Transmittal
- 4 Table 1:
Index Crimes by Month and Cleared
by Arrest
- 4 Table 2:
Index Crimes by Police District
- 5 Table 3:
Persons Arrested for Part 1 and Part II
Offenses by Age and Sex
- 5 Table 4:
Juveniles Arrested by Police District
- 6 Table 5:
Persons Arrested for Certain Offenses
by Race and Sex
- 7 Table 6:
Auto Thefts and Recoveries, Value of
Property and Recovered
- 7 Table 7:
Complaints Against Police Officers
- 8 Table 8:
Traffic Enforcement, Accidents and
Fatalities
- 8 Table 9:
Number of Police Officers, Total Fleet
Mileage, Total Radio Calls
- 9 Table 10:
Distribution of Plant and Equipment
- 9 Table 11:
Distribution of Commissioned Personnel
by Rank
- 10 Table 12:
Civilian Personnel
- 11 Organizational Chart
- 13 Accountants' Report
- 14 Financial Statements

MEMBERS

Homer E. Sayad
President
Charles E. Valier
Vice President
Thomas W. Purcell
Purchasing Member
Robert F. Wintersmith
Treasurer
Vincent C. Schoemehl, Jr.
Mayor

James A. Roche, Jr.
Secretary to the Board

BOARD OF POLICE COMMISSIONERS

1200 CLARK AVENUE

CITY OF ST. LOUIS

MISSOURI 63103



TO THE MEMBERS OF THE BOARD OF ALDERMEN.....

The present Board of Police Commissioners assumed their duties and responsibilities on March 5, 1981. We are grateful to our predecessors for their thoughtful consideration and assistance during the period of transition.

While we have been in office less than one year, we have unanimously agreed to pursue the following twelve goals:

1. An ongoing dialouge with other governmental institutions, i.e. the State Legislature, the Board of Aldermen, the Board of Estimate and Apportionment of the City of St. Louis, to listen and to inform them of our plans, thoughts and problems.
2. A fair policy on promotions based upon merit and performance.
3. A financial planning and budgeting process to provide a long range plan for the Department.
4. A commitment toward insuring fair and adequate compensation for all employees of the Department.
5. A comprehensive study and review of the physical facilities of the Department and the development of a long-term capital improvements program to upgrade the facilities to improve the operations of the Department and provide energy saving and other efficiencies.
6. To take advantage of modern technology--communications, computer programs, etc.--to assist the police officer to be a more effective law enforcement professional.
7. A study of the organizational framework of the Department to determine the most effective way to deliver services.
8. A review of the Affirmative Action Program to assure the fulfillment of its objectives which are to provide minority groups access to and promotion within the Department.
9. To use the resources of the private sector of our community--corporations and individuals--to assist the Board in developing and implementing the latest management concepts and techniques in the various operations of the Department.
10. To initiate the process for the selection of the next Chief of Police and to provide for an orderly transition to the time for the retirement of the present Chief.
11. A review of those Department policies which infringe on constitutional issues--such as strip searches.
12. To constantly keep in perspective the realities of the City's fiscal resources and budgetary constraints and their relation to the Department's plans and programs.



Homer E. Sayad, President



Charles E. Valier, Vice-President



Thomas W. Purcell,
Purchasing Member



Robert F. Wintersmith,
Treasurer





James A. Roche, Jr.,
Secretary to the Board


Please realize that we have not only evolved a statement of goals, we are actively pursuing them. We have decided on the elimination of twenty-nine civilian positions and twenty-five cadet positions, saving the taxpayers \$650,000.00 in fiscal '81-'82. The Department fleet will be reduced by twenty-nine vehicles, in fiscal '81-'82, yielding an estimated savings of \$288,00.00. Committees have been appointed and are working on:


- (1) A comprehensive long range plan for the Department.
- (2) The development of a fair system of promotions based on merit and performance.
- (3) The decentralization of fiscal accountability to the command level.
- (4) Sound policies on assignment and transfer of Department personnel.
- (5) The establishment of the first outdoor range, in the Department's history.

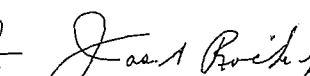
While our tenure has been relatively brief, we are impressed by the dedication and professional performance of our personnel. The Department's outstanding national reputation is well deserved. We will do our utmost to maintain, if not improve upon that reputation, in the light of a changing economic environment.


Col. Homer E. Sayad
President


Col. Charles E. Valier
Vice-President


Col. Thomas W. Purcell
Purchasing Member


Col. Robert F. Wintersmith
Treasurer


James A. Roche, Jr.
Secretary to the Board



Vincent C. Schoemehl, Jr., Mayor



Eugene J. Camp, Chief of Police

TABLE

1

INDEX CRIMES BY MONTH AND CLEARED BY ARREST

January 1, 1980 through December 31, 1980

INDEX CRIMES (1)	JAN (2)	FEB (3)	MAR (4)	APR (5)	MAY (6)	JUNE (7)	JULY (8)	AUG (9)	SEPT (10)	OCT (11)	NOV (12)	DEC (13)	1980 TOTAL (14)	1980 Cleared by Arrest (15)	1980 Percent Clearance (16)	1979 Percent Clearance (17)
GRAND TOTAL	5555	4283	5324	4690	5155	5642	6137	6303	5443	5983	4910	5206	64631*	12554	19.4	19.8
Percent of Index	8.6	6.6	8.2	7.3	8.0	8.7	9.5	9.8	8.7	9.3	7.6	8.1	100.0			
Murder & Non-Negligent Manslaughter	14	17	13	16	19	20	20	25	30	22	13	16	225	184	81.8	83.0
Forcible Rape	26	16	29	31	21	33	48	37	24	30	20	18	333	209	62.8	57.2
Rape Attempts	8	4	1	6	7	6	3	9	1	9	1	4	59	46	78.0	49.0
Total	34	20	30	37	28	39	51	46	25	39	21	22	392	255	65.1	55.7
Robbery																
Highway	410	295	371	334	336	335	362	453	432	444	379	414	4565	857	18.8	21.4
Business	58	56	73	48	57	69	45	44	51	57	49	70	677	180	26.6	30.6
Miscellaneous	54	68	60	54	74	60	52	54	44	43	60	73	696	214	30.8	36.8
*Weapon	(370)	(297)	(321)	(270)	(303)	(266)	(283)	(337)	(357)	(375)	(325)	(398)	(3902)	(770)	(19.7)	(23.9)
*No Weapon	(152)	(122)	(183)	(166)	(164)	(198)	(176)	(214)	(170)	(169)	(163)	(159)	(2036)	(481)	(23.6)	(24.8)
Total	522	419	504	436	467	464	459	551	527	544	488	557	5938	1251	21.1	24.2
Aggravated Assault																
Gun	67	56	103	88	88	145	157	149	139	114	77	67	1250	633	50.6	50.3
Knife, etc.	67	49	91	72	71	99	107	101	67	70	59	54	907	577	63.6	64.9
Other Weapons	131	122	152	164	226	233	264	249	201	182	110	139	2173	1338	61.6	64.0
Hands, Fists, etc.	12	5	12	10	16	9	5	11	6	4	3	5	98	70	71.4	73.6
*Other Assaults	(412)	(311)	(539)	(514)	(630)	(624)	(622)	(671)	(502)	(445)	(464)	(393)	(6127)	(4567)	(74.5)	(74.9)
Total	277	232	358	334	401	486	533	510	413	370	249	265	4428	2618	59.1	60.4
Burglary																
Residence Day	650	590	680	589	545	510	587	640	583	781	626	703	7484	1247	16.7	14.4
Residence Night	563	406	496	455	588	623	731	755	561	555	498	558	6789	948	14.0	10.8
Other Day	93	82	117	79	91	116	117	132	85	122	75	107	1216	243	20.0	19.0
Other Night	357	311	373	332	359	445	514	469	394	404	356	381	4695	663	14.1	14.9
*Forcible Entry	(1138)	(968)	(1079)	(956)	(990)	(1035)	(1205)	(1296)	(1038)	(1252)	(1056)	(1272)	(13285)	(2159)	(16.3)	(14.8)
*No Force	(428)	(335)	(446)	(411)	(486)	(561)	(634)	(569)	(477)	(408)	(372)	(373)	(5590)	(757)	(13.5)	(11.1)
*Attempted	(97)	(86)	(141)	(88)	(107)	(98)	(110)	(131)	(108)	(112)	(127)	(104)	(1309)	(185)	(14.1)	(15.2)
Total	1663	1389	1666	1455	1583	1694	1949	1996	1623	1862	1555	1749	20184	3101	15.4	13.7
Larceny	2462	1778	2172	1896	2206	2425	2505	2548	2321	2555	2084	2091	27043	4549	16.8	16.0
Auto Theft	583	428	581	516	451	514	620	627	504	591	500	506	6421	596	9.3	11.0
*Arson	25	18	20	47	41	51	43	52	38	40	31	44	450	94	20.9	

*Not included in total

TABLE

2

INDEX CRIMES BY POLICE DISTRICT

January 1, 1980 through December 31, 1980

Police District (1)	Murder (2)	Forcible Rape* (3)	Robbery (4)	Aggravated Assault (5)	Total Person Crime (6)	Burglary (7)	Larceny- Theft (8)	Auto Theft (9)	Total Property Crime (10)	GRAND TOTAL (11)
	% of 1980 Crimes	% of 1980 Total Crimes	% of 1980 Total Crimes	% of 1980 Total Crimes	% of 1980 Total Crimes	% of 1980 Total Crimes	% of 1980 Total Crimes	% of 1980 Total Crimes	% of 1980 Total Crimes	% of 1980 Total Crimes
TOTAL	225	100.0	392	100.0	5938	100.0	4428	100.0	10983	100.0
1	10	4.4	9	2.3	155	2.6	209	4.7	383	3.5
2	3	1.3	12	3.1	184	3.1	117	2.6	316	2.9
3	23	10.2	61	15.6	690	11.6	886	20.0	1660	15.1
4	13	5.8	25	6.4	632	10.6	262	5.9	932	8.5
5	30	13.3	42	10.7	748	12.6	598	13.5	1418	12.9
6	31	13.8	60	15.3	649	10.9	496	11.2	1236	11.3
7	48	21.3	99	25.3	1129	19.0	857	19.6	2143	19.5
8	46	20.4	46	11.7	903	15.2	594	13.4	1589	14.5
9	21	9.3	38	9.7	848	14.3	399	9.0	1306	11.9

*Includes Attempts

**Arson excluded (No district designation on report) Total on Table 1

TABLE

3

PERSONS ARRESTED FOR PART I AND II OFFENSES BY AGE AND SEX

January 1, 1980 through December 31, 1980

CLASSIFICATION OF OFFENSES (1)	Male (2)	Female (3)	Both Sexes (4)	16 & Under (5)	17-20 (6)	21-24 (7)	25-34 (8)	35-44 (9)	45-54 (10)	55-64 (11)	65 & Over (12)
GRAND TOTAL -- ALL CLASSES	29580	4953	34573	2181	350	4996	792	6216	1339	9509	1716
Percentage -- All Classes	85.6	14.4	100.0	6.3	1.0	14.5	2.3	18.0	3.9	27.5	5.0
PART I CLASSES -- TOTAL	12403	1886	14289	1232	179	2573	337	2796	402	3994	644
Percentage -- Part I	86.8	13.2	100.0	8.6	1.3	18.0	2.4	19.6	2.8	28.0	4.5
Criminal Homicide											
a) Murder & Non-Negligent Manslaughter	174	15	189	2	2	34	3	50	3	66	5
b) Manslaughter by Negligence	12	1	13	1	1	2	1	3	1	2	1
Forcible Rape	557	16	573	82	3	111	100	4	168	4	58
Robbery	1258	114	1372	162	4	286	30	314	30	394	37
Aggravated Assault	3882	587	4469	178	53	662	95	875	110	1395	211
Burglary -- Breaking or Entering	2627	115	2742	452	27	666	32	584	28	709	21
Larceny -- Theft	3847	1037	4884	354	90	804	176	861	226	1241	366
Auto Theft	46	1	47	1	1	8	1	9	1	19	1
Arson**	82	12	94	6	2	10	1	23	3	29	6
PART II CLASSES -- TOTAL	17177	3107	20284	949	171	2423	455	3420	937	5515	1072
Percentage -- Part II	84.7	15.3	100.0	4.7	.8	11.9	2.2	16.9	4.6	27.2	5.3
Other Assaults	1584	336	1920	163	42	207	43	362	65	551	118
Arson**	173	89	262	3	1	11	8	29	24	80	44
Forgery and Counterfeiting	31	33	64	3	2	3	1	6	9	11	14
Fraud	---	---	---	---	---	---	---	---	---	---	---
Embezzlement	---	---	---	---	---	---	---	---	---	---	---
Stolen Property; Buying, Receiving, Possessing	148	19	167	56	7	14	2	15	3	34	6
Vandalism	142	10	152	91	5	11	3	8	1	24	1
Weapons -- Carrying, Possessing, etc.	1185	108	1293	65	9	185	6	297	32	416	40
Prostitution and Commercial Vice	790	319	1109	7	6	101	58	166	127	276	109
Sex Offenses*	147	6	153	14	1	8	1	21	3	43	26
Narcotic Drug Laws	2625	260	2885	152	23	588	53	729	77	924	82
Gambling	1160	56	1216	6	---	35	1	78	3	257	18
Offenses Against Family & Children	363	46	409	---	1	14	6	79	11	155	21
Driving Under Influence of Alcohol	1984	110	2094	---	---	84	4	216	19	572	40
Liquor Laws	424	100	524	32	5	215	28	47	12	26	38
Drunkenness	604	11	615	1	---	9	---	98	2	202	5
Disorderly Conduct	1972	332	2304	78	35	273	44	424	89	678	94
Vagrancy	97	18	115	---	---	3	1	6	8	42	6
All Other Offenses	3666	1242	4908	272	33	652	196	816	449	1195	445

*Except Forcible Rape and Prostitution

**Arson moved to Part I from Part II, No change in totals

TABLE

4

JUVENILES ARRESTED BY POLICE DISTRICT (Under 17 years of age)

January 1, 1980 through December 31, 1980

MONTH (1)	FIRST (2)	SECOND (3)	THIRD (4)	FOURTH (5)	FIFTH (6)	SIXTH (7)	SEVENTH (8)	EIGHTH (9)	NINTH (10)	TOTAL (11)	GRAND TOTAL (12)	PERCENT (13)
	M F	M F	M F	M F	M F	M F	M F	M F	M F	M F		
TOTAL	213 64	155 31	493 82	200 21	296 45	300 34	238 31	128 20	213 28	2236 356	2592	
Percent	8.2 2.5	6.0 1.2	19.0 3.2	7.7 .8	11.4 1.7	11.6 1.3	9.2 1.2	4.9 .7	8.2 1.1	86.3 13.7	100.0	
January	15 2	17 2	32 2	17 2	16 3	25 1	12 ---	14 1	15 4	163 17	180	6.9
February	30 9	21 7	28 5	15 4	19 1	13 3	5 3	6 4	6 4	140 39	179	6.9
March	15 12	17 4	45 10	12 1	28 6	33 3	20 2	6 ---	20 4	196 42	238	9.2
April	9 2	7 1	35 5	10 3	27 6	25 3	19 3	8 1	13 1	153 25	178	6.9
May	6 7	14 1	30 11	14 2	21 5	23 1	19 3	15 2	14 2	156 34	190	7.3
June	20 2	12 ---	55 6	19 1	22 2	22 1	25 ---	15 4	26 2	216 18	234	9.0
July	18 6	8 1	54 4	10 ---	22 4	27 1	29 3	18 1	25 2	211 22	233	9.0
August	18 3	10 1	59 5	23 4	14 1	36 3	22 5	5 1	19 3	206 26	232	9.0
September	23 4	19 2	36 8	13 ---	21 4	23 4	25 3	18 2	20 ---	198 27	225	8.7
October	25 7	14 5	36 8	23 2	21 7	29 3	29 1	11 4	14 1	202 38	240	9.3
November	16 6	5 5	59 7	31 ---	54 1	16 7	19 1	6 4	26 2	232 33	265	10.2
December	18 4	11 2	24 11	13 2	31 5	28 4	14 4	9 ---	15 3	163 35	198	7.6

TABLE

5

PERSONS ARRESTED FOR CERTAIN OFFENSES BY RACE AND SEX

January 1, 1980 through December 31, 1980

CLASSIFICATIONS OF OFFENSES (1)	ARRESTED (Taken Into Custody)*		WHITE ARRESTED	BLACK ARRESTED	OTHER ARRESTED		TOTAL ARRESTED				Total (12)
	(2)	Male (3)	Female (4)	Male (5)	Female (6)	Male (7)	Female (8)	White (9)	Black (10)	Other (11)	
GRAND TOTAL -- ALL CLASSES	34573	9158	1373	20406	3617	16	3	10531	24023	19	34573
Percentage -- All Classes		26.5	4.0	59.0	10.5	.0	.0	30.5	69.5	.1	100.0
PART I CLASSES -- TOTAL	14289	3256	558	9142	1326	5	2	3814	10468	7	14289
Percentage -- Part I		22.8	3.9	64.0	9.3	.0	.0	26.7	73.3	.0	100.0
Criminal Homicide											
a) Murder & Non-Negligent Manslaughter	189	19	3	155	12	---	---	22	167	---	189
b) Manslaughter by Negligence	13	4	---	8	1	---	---	4	9	---	13
Forcible Rape	573	160	5	396	11	1	---	165	407	1	573
Robbery	1372	133	21	1125	93	---	---	154	1218	---	1372
Aggravated Assault	4469	1234	156	2647	430	1	1	1390	3077	2	4469
Burglary	2742	738	46	1889	69	---	---	784	1958	---	2742
Larceny-Theft	4884	958	326	2886	710	3	1	1284	3596	4	4884
Auto Theft	47	10	1	36	---	---	---	11	36	---	47
Arson***	94	48	6	34	6	---	---	54	40	---	94
PART II CLASSES -- TOTAL	20284	5902	815	11264	2291	11	1	6717	13555	12	20284
Percentage -- Part II		29.1	4.0	55.5	11.3	.1	.0	33.1	66.8	.1	100.0
Other Assaults	1920	562	110	1021	226	1	---	672	1247	1	1920
Arson***	---	---	---	---	---	---	---	---	---	---	---
Forgery and Counterfeiting	262	56	32	117	57	---	---	88	174	---	262
Fraud	64	13	9	18	24	---	---	22	42	---	64
Embezzlement	---	---	---	---	---	---	---	---	---	---	---
Stolen Property; Buying, Rec., Poss.	167	51	8	97	11	---	---	59	108	---	167
Vandalism	152	56	1	86	9	---	---	57	95	---	152
Weapons; Carrying, Possessing, Etc.	1293	237	19	948	89	---	---	256	1037	---	1293
Prostitution & Commercialized Vice	1109	330	33	456	286	4	---	363	742	4	1109
Sex Offenses (Except 2 & 16)**	153	78	4	69	2	---	---	82	71	---	153
Narcotic Drug Laws	2885	841	129	1782	131	2	---	970	1913	2	2885
Gambling	1216	53	14	1107	42	---	---	67	1149	---	1216
Offenses Against Family & Children	409	60	14	303	32	---	---	74	335	---	409
Driving Under Influence of Alcohol	2094	935	83	1048	27	1	---	1018	1075	1	2094
Liquor Laws	524	250	61	174	39	---	---	311	213	---	524
Drunkenness	615	254	6	348	5	2	---	260	353	2	615
Disorderly Conduct	2304	911	116	1061	215	---	1	1027	1276	1	2304
Vagrancy	115	31	4	66	14	---	---	35	80	---	115
All Other Offenses	4908	1136	166	2529	1076	1	---	1302	3605	1	4908

*Juveniles and Adults

**Except Forcible Rape and Prostitution

***Arson moved to Part I from Part II, no change in totals

TABLE

6

AUTO THEFTS AND RECOVERIES, VALUE OF PROPERTY STOLEN AND RECOVERED

January 1, 1980 through December 31, 1980

AUTO THEFTS AND RECOVERIES 1980 Compared with 1979 (1)	1980		1979		VALUE OF PROPERTY STOLEN AND RECOVERED 1980 Compared with 1979 (1)	1980			1979		
	Units (2)	Percent (3)	Units (4)	Percent (5)		Amount Stolen (2)	Amount Recovered (3)	Percent Recovered (4)	Amount Stolen (5)	Amount Recovered (6)	Percent Recovered (7)
TOTAL ALL RECOVERIES	4909	---	5013	---	GRAND TOTAL	37,315,604	13,659,736	36.6	32,599,667	14,199,793	43.6
Automobiles Stolen in City	6421	---	6073	---	Currency, Notes, Etc.	1,822,147	71,608	3.9	1,452,608	63,270	4.4
Recovered Automobiles	---	---	---	---	Jewelry and Precious Metals	3,025,504	99,384	3.3	1,629,408	112,855	6.9
a) Automobiles Reported Stolen in City and Recovered in City	3194	49.7	3357	55.3	Clothing and Furs	1,269,659	141,577	11.2	1,143,454	82,148	7.2
b) Automobiles Stolen Locally and Recovered by Other Jurisdictions	885	13.8	849	14.0	Locally Stolen Motor Vehicles	18,817,406	11,083,172	58.9	18,387,736	12,112,685	65.9
Total Recovery of Local Thefts	4079	63.5	4206	69.3	Office Equipment	485,716	56,033	11.5	484,309	33,430	6.9
c) Automobiles Recovered Locally and Stolen in Other Jurisdictions	830	---	807	---	Televisions, Radios, Stereos, Etc.	3,267,390	248,830	7.6	2,672,480	251,379	9.4
					Firearms	260,912	25,005	9.6	202,641	27,403	13.5
					Household Goods	758,547	54,861	7.2	392,230	22,973	5.9
					Consumable Goods	306,857	40,935	13.3	297,227	58,198	19.6
					Livestock	---	---	---	24,950	---	---
					Miscellaneous	7,301,466	1,838,331	25.2	5,912,624	1,435,452	24.3

TABLE

7

COMPLAINTS AGAINST POLICE OFFICERS

January 1, 1980 through December 31, 1980

TYPE OF COMPLAINTS (1)	CITIZEN COMPLAINTS						
	Exonerated (2)	Unfounded (3)	Not Sustained (4)	Sustained (5)	Withdrawn (6)	Pending (7)	Total (8)
TOTAL	6	14	127	32	39	26	244*
Physical Abuse	1	10	69	4	11	14	109
Verbal Abuse	0	0	22	4	7	1	34
Improper Attitude/Manner	2	2	18	8	6	3	39
Lack of Police Action	1	0	2	1	0	1	5
Improper Handling of Assignment	2	0	4	9	5	4	24
Unjust Arrest, Summons, etc.	0	1	5	2	3	0	11
Money/Property Missing	0	0	3	3	5	2	13
Harassment	0	0	2	1	1	0	4
Property Damaged by Police	0	1	2	0	1	1	5

*Number of incidents complained about -- not total number of allegations.

EXPLANATION OF COMPLAINT DISPOSITIONS:

Exonerated -- The action complained of did occur, but the investigation disclosed that the actions were reasonable, lawful and proper.
 Unfounded -- The complaint was not based on facts, as shown by the investigation; or the incident complained of did not occur.
 Not Sustained -- Insufficient evidence available to either prove or disprove the allegations in the complaint.
 Sustained -- Investigation disclosed sufficient evidence to support the allegations of the complaint.
 Withdrawn -- Complainant withdrew complaint; investigation terminated.
 Pending -- Investigation still being conducted.

NON-CITIZEN COMPLAINTS

TYPES OF COMPLAINTS (1)	NON-CITIZEN COMPLAINTS						
	Exonerated (2)	Unfounded (3)	Not Sustained (4)	Sustained (5)	Withdrawn (6)	Pending (7)	Total (8)
TOTAL	22	26	12	297	15	16	388*
Procedural Violations	11	6	6	145	13	7	188
Violation of City Ordinance/State Law	0	0	4	17	2	6	29
Lost/Damaged Department Property	11	20	2	72	0	3	108
Chargeable Accidents	0	0	0	63	0	0	63

*Does not include disciplinary action against Licensed Watchmen

DISCIPLINARY ACTION

CITIZEN COMPLAINTS

Awaiting Board Trial	6
Awaiting Citizen Appeal Hearing	14
Resigned Under Investigation	2
Reduced to Prob. Police Officer	---
6 Months	1
Suspension	---
5 Days	1
4 Days	1
2 Days	2
Written Reprimand	7
Oral Reprimand	12
Reinstructed	28
Complainant reimbursed	3

NON-CITIZEN COMPLAINTS

Awaiting Board Trial	3
Dropped from rolls	12
Resigned under Investigation	3
Reduced to Prob. 1 year and 141 days suspension	---
Reduced to Prob. Police Officer	1
1 Year	1
6 Months	2
90 Days	1
60 Days	2
Probationary Period Extended	---
6 Months	1
Suspension	---
5 Days	2
2 Days	3
2 Days, and loss of 37.1 hours overtime	1
1 Day	2
Loss of Overtime	---
16 Hours	1
8 Hours	4
Written Reprimand, pay for lost item	5
Written Reprimand	46
Oral Reprimand, pay for lost item	17
Oral Reprimand	50
Reinstructed, pay for lost item	31
Reinstructed	52

Citizen complaints investigated by Internal Affairs Division	221
Citizen complaints investigated by other Districts/Divisions	23
Total	244
Total Number of Citizen Complaints	244
Total Number of Non-Citizen Complaints	388
Total	632*

*Does not include investigation of Licensed Watchmen

TABLE 8 **TRAFFIC ENFORCEMENT ACCIDENTS AND FATALITIES**
1975 through 1980

TRAFFIC ENFORCEMENT:						
TYPE OF OFFENSE (1)	1975 (2)	1976 (3)	1977 (4)	1978 (5)	1979 (6)	1980 (7)
GRAND TOTAL	322,913	363,881	360,477	368,550	385,190	418,618
Hazardous:						
Speeding	24,229	26,704	23,421	25,945	25,956	29,456
Careless Driving	1,794	1,479	1,510	1,323	640	1,225
Electric Signal	13,170	14,792	13,028	12,020	10,501	8,704
Stop Sign	6,743	6,718	5,712	5,800	5,106	5,586
Improper Passing	1,489	1,353	1,923	1,923	1,609	1,782
Improper Turn	11,529	9,339	9,143	7,794	4,296	7,398
Pedestrian Violation	1,868	1,394	1,213	1,044	1,137	1,397
Driving While Intoxicated	688	865	1,924	1,265	396	382
Driving Under Inf. of Alcoh/Drugs	502	505	830	1,429	1,853	2,185
Motorist Viol. of Ped. Or.I.	223	209	64	86	50	76
Following Another Veh. Too Closely	1,433	1,313	1,268	1,014	620	522
Bicycle Violations	176	159	146	120	104	101
Equipment Violations	2,461	2,020	1,941	1,907	1,598	1,461
All Other	4,500	4,054	3,913	4,767	7,098	7,420
Total Hazardous	70,805	70,904	65,876	66,437	60,964	67,695
Non-Hazardous:						
Parking	230,534	272,773	273,062	280,810	303,314	327,964
All Other	21,574	20,204	21,539	21,303	20,912	22,959
Total Non-Hazardous	252,108	292,977	294,601	302,113	324,226	350,923
ACCIDENTS AND FATALITIES:						
TOTAL Accidents	24,343	25,515	26,978	29,102	25,637	20,470
Property Damage Accidents	18,249	18,979	20,056	22,003	19,446	14,734
Injury Accidents	6,038	6,462	6,848	7,036	6,133	5,673
Fatal Accidents	56	74	74	63	58	63
TOTAL Injured and Killed	8,961	9,781	10,348	10,525	9,098	8,317
Persons Injured	8,900	9,702	10,262	10,459	9,038	8,252
Persons Killed	61	79	86	66	60	65
(Pedestrian Fatalities)	(25)	(25)	(36)	(41)	(21)	(19)
(Other Fatalities)	(36)	(54)	(50)	(25)	(39)	(46)

TABLE 9 **NUMBER OF POLICE OFFICERS, TOTAL RADIO CALLS, TOTAL FLEET MILEAGE**
1957 through 1980

Year	Number of Police Officers*	Number of Calls*	Mileage**	Year	Number of Police Officers*	Number of Calls*	Mileage**
1957	1,920	338,223	6,815,359	1969	2,067	633,911	12,021,968***
1958	2,001	386,223	8,702,871	1970	2,220	631,142	13,006,554***
1959	1,966	451,165	9,988,414	1971	2,229	662,873	
1960	1,915	468,566	9,904,354	1972	2,232	696,370	13,285,939 (est.)
1961	1,889	489,231	10,309,552	1973	2,232	870,473	13.6 million (est.)
1962	1,809	544,929	10,503,809	1974	2,226	908,261	15.1 million (est.)
1963	1,831	599,556	11,172,483	1975	2,150	815,189	14.8 million (est.)
1964	1,852	629,526	10,906,386	1976	2,059	900,298	14.6 million (est.)
1965	1,987	626,354	11,152,978	1977	2,068	891,968	14.5 million (est.)
1966	2,035	651,575	11,457,725	1978	1,966	750,550	14.2 million (est.)
1967	2,043	713,413	11,712,945	1979	1,984	717,330	14.0 million (est.)
1968	2,013	758,970	11,713,871	1980	1,945	697,858	13.3 million (est.)

*As of December 31

**Year ending March 31

***Year ending April 30

TABLE 10 **DISTRIBUTION OF PLANT AND EQUIPMENT (DISTRICT AREA AND POPULATION)**
December 31, 1980

DIVISIONS (1)	Year Built (2)	Property Value at Cost (3)	Population of District 1980 Census (4)	Area in Sq. Miles (5)	Cruising Patrol (6)	Autos (7)	Tri-Cars (8)	Trucks (9)	Cushman Vehicles (10)	Motorcycles (11)	Other (12)	Call Boxes (13)
TOTAL		8,472,622	453,085	61.37	13	506	37	14	7	19	4	713
Board of Police Commissioners						12						
Chief's Office						37						
Bureau of Inspection						15						
Bureau of Field Operations:												
Commander's Staff						31						
Districts:												
First	1931	221,009	67,442	8.85	1	16	3					62
Second	1937	188,286	68,846	11.79	1	17	2		1			81
Third	1937	206,798	87,520	9.78	1	30	2	3				146
Fourth (In Headquarters)			11,266	3.86	1	18	1		1	4		111
Fifth	1939	191,711	32,424	4.34	1	18	2					78
Sixth	1930	196,897	59,392	11.16	1	18	2		3			66
Seventh*	1907	461,689	56,725	4.75	1	27	3					58
Eighth	1937	154,003	35,084	2.81	1	15	2					46
Ninth	1937	181,560	34,386	4.03	1	18	1		2			65
Juvenile Division**						17						
Tactical Deployment Division	1941	152,549				1						
Canine Section	1959	38,591				15					2	
Mobile Reserve Section						16						
Mounted Patrol Stables		128,883										
Traffic Safety Division						19	15			15		
Prisoner Processing Division					1	1						
Bureau of Investigation						108						
Bureau of Services						11			1			
Communications Operations						3			1			
Headquarters and Gymnasium	1926	5,057,663										
Police Garage	1923	470,105										
Motor Services (extra Pool)					3	37	4		6		2	
Buildings Division**						3			3			
Supply Division**		132,566				1						
Land		690,312										

*New station at Yalem Center, 724 N. Union Blvd.

**All housed in Laclede Warehouse

TABLE 11 **DISTRIBUTION OF COMMISSIONED PERSONNEL BY RANK**
December 31, 1980

	Board of Police Commissioners	Chief's Office	Bureau of Inspection	BFO Staff	First District	Second District	Third District	Fourth District	Fifth District	Ninth District	Sixth District	Seventh District	Eighth District	Juvenile Division	Prisoner Processing	Police Reserve	Mobile Reserve	Canine	Bureau of Services	Bureau of Investigation	Mounted Patrol	Traffic Safety	CID	Tactical Crime Deployment	Criminal Justice Liaison	GRAND TOTAL
(1)	(2)	(3)	(4)	(5)	(6)	(7)	(8)	(9)	(10)	(11)	(12)	(13)	(14)	(15)	(16)	(17)	(18)	(19)	(20)	(21)	(22)	(23)	(24)	(25)	(26)	(27)
TOTAL	4	78	30	14	99	97	217	134	113	121	121	173	107	55	61	2	34	23	65	242	21	53	32	35	14	1945
Police Comm. (Col.)	4*																									4*
Sec. to the Board	1*																									1*
Chief of Police (Col.)		1																	1	1						1
Lieutenant Colonel		1	1	1																						5
Major			1	4																						6
Captain		1	1	5	1	1	1	1	1	1	1	1	1	1		1				4						22
Lieutenant		4	2	5	4	5	5	5	5	5	5	5	5	5	1	1	1		4	5		1	1	1	1	67
Sergeant	1	17	19	2	12	12	27	18	15	14	14	21	12	8	6		3	4	6	37	1	4	3	4		260
Corporal				1																						1
Police Officer:																										1476
11 Yrs. & Over	2	34	5	1	56	50	59	29	33	32	33	54	31	32	22		18	14	45	118	12	36	26	10	13	765
6-10 Years		19	1	1	19	25	61	47	23	33	24	65	13	13	11	1	3	5	8	76	3	12	2	17		482
5 Years		1			2	9	5	2	2	8	7										1					41
4 Years					3	2	21	8	7	11	10	12	11		3		2		1				1			92
3 Years						1	8	4	8	5	3	1	4				3									37
2 Years						1	12	7	7	7	9	1	15													59
Prob. Police Officer					1		14	10	12	11	14	6	15				1				4					86
Turnkey	1														16											21

*Not included in total

TABLE

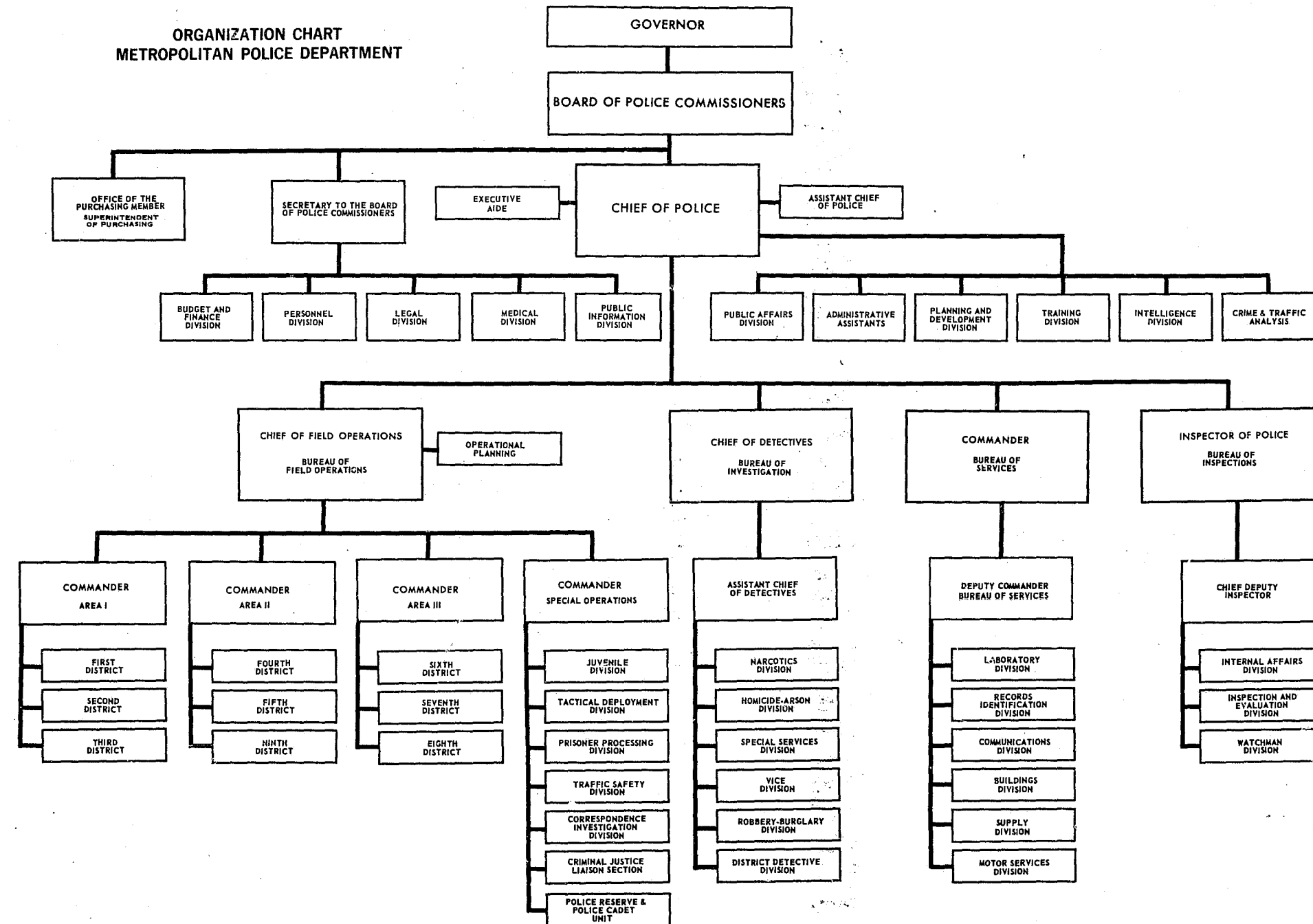
12

CIVILIAN PERSONNEL

December 31, 1980

1	Academy Director	36,534.00		1	Librarian Assistant	10,507.38	12,747.54
1	Accountant	16,092.18	19,437.08	1	Lubricationist	8,803.34	10,507.38
1	Accounting Supervisor	20,446.66	24,458.20	1	Manpower Allocation Director	24,458.20	29,020.68
4	Administrative Assistant I's	13,347.10	16,092.18	2	Mechanic, Lead	15,335.06	18,521.88
3	Administrative Assistant II's	16,818.10	20,446.66	1	Medical Director	26,628.16	31,663.58
1	Assistant to Comm.-Bureau of Services	19,437.08	23,456.68	1	Medical Director Assistant	19,437.08	23,456.68
1	Auditor, Internal	14,609.40	17,638.40	1	Medical Director Associate	25,459.72	30,300.40
20	Auto Mechanics	13,946.66	16,818.10	1	Medical Division Admin.	21,424.78	25,459.72
4	Body Repair Mechanics	14,609.40	17,638.40	1	Medical Secretary	12,747.54	15,335.06
1	Body Repair Mechanic, Lead	16,092.18	19,437.08	2	Microfilm Librarian	8,393.32	10,034.18
3	Carpenters	14,609.40	17,638.40	9	Microfilm Operator	8,803.34	10,507.38
1	Cashier	10,034.18	12,116.52	19	Motor Service Attendant I	8,803.34	10,507.38
1	Cashier, Assistant	9,213.62	11,043.76	9	Motor Service Attendant II	9,213.62	11,043.76
1	Chief Inspector	15,335.06	18,521.88	3	Motor Service Attendant Supervisor	10,034.18	12,116.52
1	Chief Photographer	15,335.06	18,521.88	1	MT/ST Operator	9,213.62	11,043.76
1	Chief Photographer, Assistant	13,347.10	16,092.18	1	MT/ST Composer Operator	11,043.76	13,347.10
1	Chief Physician	16,092.18	19,437.08	3	Multilith Operator	11,043.76	13,347.10
2	Clerks, Accounts	10,034.18	12,116.52	1	Multilith Operator Lead	12,116.52	14,609.40
1	Clerk, Audit	10,507.38	12,747.54	1	Nurse Registered	13,347.10	16,092.18
1	Clerk, Board Room	10,034.18	12,116.52	1	Nurse Supervisor	15,335.06	18,521.88
6	Clerks, Chief	11,043.76	13,347.10	3	Painter	13,946.66	16,818.10
1	Clerk, Chief Property	12,747.54	15,335.06	1	Parts Manager	11,548.68	13,946.66
1	Clerk, C.I.D.	10,034.18	12,116.52	1	Parts Manager Assistant	10,034.18	12,116.52
1	Clerk, Command Post	10,034.18	12,116.52	1	Paymaster	20,446.66	24,458.20
36	Clerks, Complaint Evaluation	8,803.34	10,507.38	1	Payroll Specialist	11,548.68	13,946.66
6	Clerks, Control	8,803.34	10,507.38	1	Personnel Analyst	19,437.08	23,456.68
1	Clerk, Control Lead	9,623.90	11,548.68	1	Personnel Director	27,824.42	33,138.04
9	Clerks, Counter	8,393.32	10,034.18	1	Personnel Interviewer	12,116.52	14,609.40
6	Clerks, Counter I	8,803.34	10,507.38	1	Personnel Representative	12,747.54	15,335.06
1	Clerk, Court Overtime	13,347.10	16,092.18	2	Personnel Technician	10,034.18	12,116.52
2	Clerks, Court Scheduler	11,043.76	13,347.10	2	Photographer I	11,043.76	13,347.10
11	Clerks, Crime Coding	8,803.34	10,507.38	1	Photographer II	12,747.54	15,335.06
2	Clerks, Desk Dispatcher	10,034.18	12,116.52	1	Physical Therapist	13,347.10	16,092.18
38	Clerks, Dispatcher	10,034.18	12,116.52	1	Physician, Chief	16,092.18	19,437.08
2	Clerks, Distribution	8,393.32	10,034.18	1	Physician Staff	13,347.10	16,092.18
9	Clerks, District	8,393.32	10,034.18	1	Planning & Development Director	21,424.78	25,459.72
9	Clerks, File	7,983.04	9,623.90	2	Plumber	14,609.40	17,638.40
2	Clerks, Information	9,213.62	11,043.76	1	Police Reserve Assistant	11,548.68	13,946.66
1	Clerk, Information I	9,623.90	11,548.68	3	Production Technician	12,116.52	14,609.40
1	Clerk, Inspection	9,623.90	11,548.68	1	Program Director	21,424.78	25,459.72
1	Clerk, Lead Coding	9,623.90	11,548.68	3	Programmer Analyst II	20,446.66	24,458.20
2	Clerks, Motor Services	9,213.62	11,043.76	1	Programmer Analyst Senior	22,453.86	26,628.16
16	Clerks, Office	8,393.32	10,034.18	1	Public Information Assistant	12,747.54	15,335.06
1	Clerk, Parts	9,213.62	11,043.76	1	Public Information Manager	18,521.88	22,453.86
1	Clerk, Perpetual Inventory	8,803.34	10,507.38	1	Purchasing Assistant	14,609.40	17,638.40
5	Clerks, Processing	8,803.34	10,507.38	2	Radio Installer	8,803.34	10,507.38
3	Clerks, Property	10,034.18	12,116.52	7	Radio Technician	15,335.06	18,521.88
1	Clerk, Purchasing	10,034.18	12,116.52	2	Receptionist	8,803.34	10,507.38
19	Clerks, Radio	8,803.34	10,507.38	2	Records Clerk Supervisor	12,747.54	15,335.06
1	Clerk, Receiving	8,803.34	10,507.38	1	Records Service Coordinator	13,946.66	16,818.10
8	Clerks, Records	8,803.34	10,507.38	1	Repair Service Manager	16,818.10	20,446.66
1	Clerk, Recruit Coordinator	10,034.18	12,116.52	1	Repair Service Manager Asst.	11,548.68	13,946.66
5	Clerks, Review	10,034.18	12,116.52	1	Repair Shop Supervisor	17,638.40	21,424.78
2	Clerks, Security	9,213.62	11,043.76	3	Research Assistant	17,638.40	21,424.78
1	Clerk, Senior I	9,213.62	11,043.76	2	Research Associate	19,437.08	23,456.68
2	Clerks, Statistical	11,043.76	13,347.10	1	Research Specialist	13,347.10	16,092.18
1	Clerk, Supply	8,393.32	10,034.18	1	RJE Terminal Operator	10,507.38	12,747.54
13	Clerks, Teleprocessing	8,803.34	10,507.38	5	Secretary	11,548.68	13,946.66
4	Clerks, Teleprocessing, Senior	9,623.90	11,548.68	1	Secretary, Legal	12,747.54	15,335.06
1	Clerk, Training	10,034.18	12,116.52	1	Secretary to the Board	29,020.68	34,612.50
1	Communications Specialist	23,456.68	27,824.42	1	Security Attendant	9,213.62	11,043.76
1	Computer Section Supervisor	12,747.54	15,335.06	1	Security Chauffeur	9,213.62	11,043.76
1	Controller	26,628.16	31,663.58	3	Security Interviewer	9,213.62	11,043.76
1	Court Liaison Supervisor	13,347.10	16,092.18	4	Stable Attendant	8,393.32	10,034.18
4	Criminalist I	17,638.40	21,424.78	14	Stenographer	10,034.18	12,116.52
1	Criminalist II	19,437.08	23,456.68	1	Stenographer - Reporter	12,747.54	15,335.06
1	Criminalist, Chief	22,453.86	26,628.16	3	Stockhandler	8,393.32	12,116.52
44	Custodian I	8,393.32	10,034.18	1	Superintendent of Buildings	19,437.08	23,456.68
1	Custodian II	8,803.34	10,507.38	1	Superintendent of Motor Services	19,437.08	23,456.68
2	Custodian Supervisor Assistant	9,213.62	11,043.76	1	Superintendent of Purchasing	21,424.78	25,459.72
1	Dextrigraph Operator	9,213.62	11,043.76	1	Superintendent of Supplies	19,437.08	23,456.68
6	Drivers	8,393.32	10,034.18	1	Superintendent of Buildings Asst.	16,818.10	20,446.66
2	Electricians	14,609.40	17,638.40	1	Supervisor Office	11,548.68	13,946.66
1	Employee Benefits Representative	13,347.10	16,092.18	1	Supervisor Reports & Records	13,946.66	16,818.10
2	Evaluation Analyst	17,638.40	21,424.78	1	Systems Development Manager	23,456.68	27,824.42
5	Executive Secretary	12,747.54	15,335.06	5	TV Technician	16,818.10	20,446.66
6	Fingerprint Technician	9,623.90	11,548.68	26	Typist A	8,803.34	10,507.38
1	Fingerprint Technician Supervisor	11,548.68	13,946.66	1	Uniform Inspector	10,034.18	12,116.52
1	Grants, Director	27,824.42	33,138.04	1	Uniform Inspector Assistant	8,803.34	10,507.38
1	IDMO Operator	9,213.62	11,043.76	1	Utility Service Manager	12,116.52	14,609.40
1	Junior Accountant	11,548.68	13,946.66	1	Warehouse Supervisor	11,548.68	13,946.66
3	Keypunch Operator I	8,803.34	10,507.38				
6	Keypunch Operator II	9,623.90	11,548.68	585	Total - Actual Strength as of 12/31/80	563	
2	Keypunch Operator Lead	10,034.18	12,116.52	20	Part-Time		
4	Latent Fingerprint Examiner	15,335.06	18,521.88	10	Grant Employees		
5	Laborer	8,803.34	10,507.38	27	Police Cadets		
1	Legal Advisor	29,020.68	34,612.50				
1	Legal Advisor Assistant	25,459.72	30,300.40				
1	Librarian	14,609.40	17,638.40				

ORGANIZATION CHART METROPOLITAN POLICE DEPARTMENT



FINANCIAL STATEMENTS

(with Accountants' Report Thereon)



Peat, Marwick, Mitchell & Co.

Certified Public Accountants

720 Olive Street
St. Louis, Missouri 63101

Board of Police Commissioners
The Metropolitan Police Department
of the City of St. Louis, Missouri:

We have examined the combined balance sheet - All Fund Types and Account Group of The Metropolitan Police Department of the City of St. Louis, Missouri as of April 30, 1981 and the related combined statement of revenues, expenditures, and changes in fund balances - Governmental Fund Types and Expendable Trust Fund for the year then ended, and the statements of operations and changes in fund equity and changes in financial position of the Proprietary Fund Type - Internal Service Fund for the years ended April 30, 1981 and 1980. Our examinations were made in accordance with generally accepted auditing standards and, accordingly, included such tests of the accounting records and such other auditing procedures as we considered necessary in the circumstances.

In our report dated June 27, 1980, our opinion on the 1980 financial statements was qualified as being subject to the effects on the General Expenditures Fund financial statements of the ultimate determination of the amount of compensation to be paid the police officers for all time worked in excess of eight hours per day after May 1, 1977, including the half-hour meal period as time worked. As explained in note 5, the determination of the amount of compensation to be paid has been made and has been charged to operations in the current year as required by generally accepted accounting principles.

In our opinion, the financial statements referred to above present fairly the financial position of The Metropolitan Police Department of the City of St. Louis, Missouri at April 30, 1981 and the results of its operations for the year then ended and the results of operations and changes in financial position of its Proprietary Fund Type - Internal Service Fund for the years ended April 30, 1981 and 1980, in conformity with generally accepted accounting principles applied on a consistent basis.

Peat, Marwick, Mitchell & Co.

June 19, 1981

THE METROPOLITAN POLICE DEPARTMENT OF THE
CITY OF ST. LOUIS, MISSOURI

Combined Balance Sheet -
All Fund Types and Account Group

April 30, 1981
with comparative totals for 1980

	Governmental Fund Types		Proprietary Fund Type - Internal Service Fund - Greater St. Louis Police Academy
	General Expenditures Fund	Special Revenue Funds	
Assets			
Cash on hand and in banks	\$ -	30,349	-
Certificate of deposit	-	-	-
Accounts receivable, net of allowance for uncollectibles of \$214,050	-	-	-
Due from City of St. Louis	2,397,140	-	-
Due from grantors and contractors	-	58,638	-
Inventory, at average cost	194,552	-	54,985
Property, plant and equipment, at cost:			
Land	-	-	-
Buildings and improvement	-	-	-
Furniture and fixtures	-	-	58,210
Automotive equipment	-	-	-
Communication equipment	-	-	-
Guns and revolvers	-	-	-
Accumulated depreciation	-	-	(44,813)
Net property, plant and equipment	-	-	13,397
	\$ <u>2,591,692</u>	<u>88,987</u>	<u>68,382</u>
Liabilities and Fund Equity			
Liabilities:			
Accounts payable	139,216	1,671	-
Accrued wages and overtime payable (note 5)	2,257,924	16,271	-
Due to City of St. Louis	-	40,696	-
Badge deposits	-	-	-
Deferred revenue - grants	-	30,349	54,985
Total liabilities	<u>2,397,140</u>	<u>88,987</u>	<u>54,985</u>
Fund equity:			
Contributed capital	-	-	13,397
Investment in general fixed assets	-	-	-
Fund balance:			
Reserved for encumbrances	-	-	-
Reserved for inventory	194,552	-	-
Unreserved - designated	-	-	-
Total fund equity	<u>194,552</u>	<u>-</u>	<u>13,397</u>
	\$ <u>2,591,692</u>	<u>88,987</u>	<u>68,382</u>

See accompanying notes to financial statements.

Fiduciary Fund Types		Account Group - General Fixed Assets	Totals (memorandum only)	
Expendable Trust Fund - Secretary's Fund	Agency Fund - Treasurer's Fund		1981	1980
77,899	69,064	-	177,312	218,124
23,000	-	-	23,000	23,000
657	257,491	-	258,148	111,179
-	-	-	2,397,140	1,440,004
-	-	-	58,638	61,767
-	-	-	249,537	193,541
-	-	690,312	690,312	690,312
-	-	7,782,310	7,782,310	7,484,099
-	-	2,474,797	2,533,007	2,348,669
-	-	3,266,614	3,266,614	3,111,948
-	-	4,469,618	4,469,618	4,469,057
-	-	210,818	210,818	212,879
-	-	-	(44,813)	(40,736)
-	-	18,894,469	18,907,866	18,276,228
<u>101,556</u>	<u>326,555</u>	<u>18,894,469</u>	<u>22,071,641</u>	<u>20,323,843</u>
-	-	-	140,887	58,276
-	-	-	2,274,195	1,391,643
-	326,555	-	367,251	217,144
44,815	-	-	44,815	42,310
-	-	-	85,334	103,294
<u>44,815</u>	<u>326,555</u>	<u>-</u>	<u>2,912,482</u>	<u>1,812,667</u>
-	-	-	13,397	17,474
-	-	18,894,469	18,894,469	18,258,754
-	-	-	-	7,204
-	-	-	194,552	178,896
56,741	-	-	56,741	48,848
<u>56,741</u>	<u>-</u>	<u>18,894,469</u>	<u>19,159,159</u>	<u>18,511,176</u>
<u>101,556</u>	<u>326,555</u>	<u>18,894,469</u>	<u>22,071,641</u>	<u>20,323,843</u>

THE METROPOLITAN POLICE DEPARTMENT OF THE
CITY OF ST. LOUIS, MISSOURI

Combined Statement of Revenues, Expenditures,
and Changes in Fund Balances -
Governmental Fund Types and Expendable Trust Fund

Year ended April 30, 1981
with comparative totals for 1980

	Governmental Fund Types	
	General Expenditures Fund	Special Revenue Funds
Revenues:		
Grants and contracts	\$ -	531,718
Sale of unclaimed property	-	-
Donations, gifts, and other	-	-
Interest	-	-
Total revenues	-	531,718
Expenditures:		
Salaries and benefits	50,890,981	471,871
Supplies	2,324,214	30,605
Materials	366,765	-
Equipment	969,519	5,797
Contract services	3,378,318	27,560
Fixed and miscellaneous	289,077	5,535
Commissioned officer training	193,208	-
Reimbursable training	271,828	-
Scholarship program	-	-
Police Relief Association	-	-
Donations, gifts, and other	-	-
Distinguished service awards	-	-
Total expenditures	58,683,910	541,368
Excess of expenditures over revenues	(58,683,910)	(9,650)
Other financing sources (uses) - operating transfers in (out):		
City of St. Louis	58,787,012	-
Department	(87,446)	2,446
Total other financing sources	58,699,566	2,446
Excess of revenues and other sources over (under) expenditures and other uses	15,656	(7,204)
Fund balance, beginning of year	178,896	7,204
Fund balance, end of year	\$ 194,552	-

See accompanying notes to financial statements.

Fiduciary Fund Type - Expendable Trust Fund - Secretary's Fund	Total (memorandum only)	
	1981	1980
-	531,718	353,716
27,066	27,066	16,400
1,942	1,942	4,712
1,380	1,380	1,380
30,388	562,106	376,208
-	51,362,852	46,262,053
-	2,354,819	2,078,587
-	366,765	393,613
-	975,316	1,361,049
-	3,405,878	2,719,728
-	294,612	366,682
-	193,208	375,234
-	271,828	280,126
78,047	78,047	96,781
27,066	27,066	16,400
1,882	1,882	7,465
500	500	250
107,495	59,332,773	53,957,968
(77,107)	(58,770,667)	(53,581,760)
-	58,787,012	53,552,204
85,000	-	-
85,000	58,787,012	53,552,204
7,893	16,345	(29,556)
48,848	234,948	264,504
56,741	251,293	234,948

THE METROPOLITAN POLICE DEPARTMENT OF THE
CITY OF ST. LOUIS, MISSOURI

Statements of Operations and Changes in Fund Equity
Proprietary Fund Type - Internal Service Fund -
Greater St. Louis Police Academy

Years ended April 30, 1981 and 1980

	<u>1981</u>	<u>1980</u>
Operating revenues:		
Officer and recruit training fees:		
Department:		
In-kind contribution	\$ 469,152	604,937
Less reimbursement through training fees	271,828	280,126
Department contribution	<u>197,324</u>	<u>324,811</u>
St. Louis County:		
In-kind contribution	143,661	131,370
Training fees	239,980	251,825
St. Louis County contribution	<u>383,641</u>	<u>383,195</u>
Other law enforcement agencies - training fees	<u>31,848</u>	<u>28,301</u>
Total officer and recruit training fees	<u>612,813</u>	<u>736,307</u>
Grants and contracts	<u>2,889</u>	<u>77,318</u>
Total operating revenues	<u>615,702</u>	<u>813,625</u>
Operating expenses:		
Salaries and benefits	398,378	503,351
Special personal services	38,411	67,208
Supplies	51,387	91,900
Contract services	119,799	136,625
Fixed and miscellaneous	<u>7,727</u>	<u>14,541</u>
Total operating expenses	<u>615,702</u>	<u>813,625</u>
Operating income before other expenses	-	-
Other expenses - depreciation on assets acquired from contributed capital	<u>(4,077)</u>	<u>(4,659)</u>
Net loss	<u>\$ (4,077)</u>	<u>(4,659)</u>
Disposition of net loss:		
Net loss	(4,077)	(4,659)
Credit arising from transfer of depreciation to contributed capital	<u>4,077</u>	<u>4,659</u>
Net loss transferred to retained earnings	<u>\$ -</u>	<u>-</u>
Fund equity - contributed capital:		
Balance, beginning of year	17,474	22,133
Depreciation on assets acquired from contributed capital	<u>(4,077)</u>	<u>(4,659)</u>
Balance, end of year	<u>\$ 13,397</u>	<u>17,474</u>

See accompanying notes to financial statements.

THE METROPOLITAN POLICE DEPARTMENT OF THE
CITY OF ST. LOUIS, MISSOURI

Statements of Changes in Financial Position
Proprietary Fund Type - Internal Service Fund -
Greater St. Louis Police Academy

Years ended April 30, 1981 and 1980

	<u>1981</u>	<u>1980</u>
Sources of working capital:		
Operations:		
Net loss	\$ (4,077)	(4,659)
Item not requiring working capital - depreciation	<u>4,077</u>	<u>4,659</u>
Working capital provided by operations	<u>\$ -</u>	<u>-</u>
Uses of working capital:		
Decrease in deferred revenue - grants	(40,340)	96,877
Increase (decrease) in working capital	<u>40,340</u>	<u>(96,877)</u>
	<u>\$ -</u>	<u>-</u>
Elements of net increase (decrease) in working capital:		
Cash	-	(26,861)
Accounts receivable	-	(19,036)
Due from City of St. Louis	-	(35,579)
Inventory	40,340	(38,972)
Due to City of St. Louis	-	23,571
Increase (decrease) in working capital	<u>\$ 40,340</u>	<u>(96,877)</u>

See accompanying notes to financial statements.

THE METROPOLITAN POLICE DEPARTMENT OF THE
CITY OF ST. LOUIS, MISSOURI

Notes to Financial Statements

April 30, 1981

(1) Summary of Significant Accounting Policies

Basis of Accounting

The financial statements of the Governmental and Fiduciary (Expendable Trust and Agency) Fund Types have been prepared on the modified accrual basis of accounting. Under the modified accrual basis of accounting, revenues are recorded when received in cash unless susceptible to accrual, i.e., measurable and available to finance operations, or of a material amount and not received at the normal time of receipt. Expenditures are recorded when the liability is incurred.

The accrual basis of accounting is followed by the Proprietary Fund Type - Internal Service Fund for financial statement presentation purposes.

Due to City of St. Louis

Services performed by the Metropolitan Police Department for which revenues are collected by the Department are deposited in the Treasurer's Fund and remitted to the City of St. Louis.

Certain grant programs require the expenditure of funds before the amount due from the grantor can be requested. It is the practice under such programs for the City of St. Louis to advance the cash needed to finance the required expenditures. Such balances due the City of St. Louis are liquidated upon receipt of funds due from grantors and contractors.

Appropriation Process

Annually, unit commanders submit proposed financial needs for the subsequent year to the controller of the Department. The data is summarized in budgetary form and submitted to the Board of Police Commissioners for review and approval. The final approved budgeted appropriations are submitted to the Board of Estimate and Apportionment of the City of St. Louis to become part of the total City budget.

Funds Disbursed by the City of St. Louis

The Comptroller of the City of St. Louis, upon receipt of properly approved vouchers, makes payments of expenditures on behalf of the Department. Operating transfers from the City of St. Louis are recorded when expenditures are recorded.

General Fixed Assets Account Group

General fixed assets have been acquired for general Department purposes. Assets purchased are recorded as expenditures in the General Expenditures and Special Revenue Funds and capitalized at cost in the General Fixed Assets Account Group.

THE METROPOLITAN POLICE DEPARTMENT OF THE
CITY OF ST. LOUIS, MISSOURI

Notes to Financial Statements

No depreciation is provided on General Fixed Assets.

It is the policy of the Department to act as self-insurers on all property. No reserves or provisions have been established in the various funds for self-insurance.

Equipment - Internal Service Fund

Equipment owned by the Internal Service Fund is stated at cost. Depreciation is provided over the estimated useful life of 10 years using the straight-line method.

Inventory

Inventory is valued at average cost. Inventory in the General Expenditures Fund consists of expendable supplies held for consumption. The cost is recorded as an expenditure at the time individual inventory items are used. The reserve for inventory is equal to the amount of inventory to indicate that a portion of the fund balance is not available for future expenditure.

Encumbrances

Encumbrance accounting, under which purchase orders, contracts, and other commitments for the expenditure of funds are recorded in order to reserve that portion of the applicable appropriation, is employed in the Special Revenue Funds. Encumbrances are reported as reservations of fund balances since they do not constitute expenditures or liabilities.

Fund Balance - Unreserved Designated

The fund balance in the Secretary's Fund is composed of amounts designated by the Board of Police Commissioners for payment of distinguished service awards and police officers' scholarships and amounts received in gifts and donations designated for specific purposes.

Deferred Revenue

Certain grantors advance funds to the Department through the Special Revenue and Internal Service Funds. Grant revenue is recognized to the extent that expenditures are made.

Vacation and Banked Overtime

Vacation expense is recognized in the General Expenditures Fund when paid. Vacation accrues to department employees on January 1. The employees must take their vacation before December 31. The amount of accrued vacation not reflected in the financial statements at April 30, 1981 was approximately \$2,190,000.

Presentation

Certain 1980 data has been reclassified to conform with 1981 presentation.

(Continued)

THE METROPOLITAN POLICE DEPARTMENT OF THE
CITY OF ST. LOUIS, MISSOURI

Notes to Financial Statements

(2) Appropriation (Budget) to Actual Comparison

The following is a summary of the General Expenditures Fund disbursements compared to appropriation. The Department prepares its General Expenditures Fund appropriation on a cash basis.

	Appropriation		Disbursements			Over (under) revised appro- priation
	Original	Revised	Operations	Officer and recruit training	Total disburse- ments	
Salaries and benefits	\$ 50,446,540	50,446,540	50,011,868	295,324	50,307,192	(139,348)
Supplies	2,895,780	2,843,280	2,342,244	209	2,342,453	(500,827)
Materials	459,550	459,550	347,771	-	347,771	(111,779)
Equipment	994,620	1,044,620	969,519	-	969,519	(75,101)
Contract services	3,462,025	3,464,525	3,310,586	153,512	3,464,098	(427)
Fixed and miscellaneous	521,520	521,520	377,528	15,991	393,519	(128,001)
	<u>\$ 58,780,035</u>	<u>58,780,035</u>	<u>57,359,516</u>	<u>465,036</u>	<u>57,824,552</u>	<u>(955,483)</u>

Included in fixed and miscellaneous disbursements were operating transfers of \$2,446 and \$85,000 to the Special Revenue and Expendable Trust Funds, respectively.

The difference between the cash basis and the modified accrual basis of accounting for the General Expenditures Fund relates to the recognition of accounts payable and accrued wages and overtime payable. A reconciliation between the cash basis and the modified accrual basis of accounting follows:

	Cash basis	Reconciling items			Modified accrual basis
		Increase in accrued wages and overtime payable over previous year	Increase (decrease) in accounts payable over previous year	Increase in inventory over previous year	
Salaries and benefits	\$ 50,307,192	879,113	-	-	51,186,305
Supplies	2,342,453	-	(2,374)	(15,656)	2,324,423
Materials	347,771	-	18,994	-	366,765
Equipment	969,519	-	-	-	969,519
Contract services	3,464,098	-	67,732	-	3,531,830
Fixed and miscellaneous	393,519	-	(1,005)	-	392,514
	<u>\$ 57,824,552</u>	<u>879,113</u>	<u>83,347</u>	<u>(15,656)</u>	<u>58,771,356</u>

(Continued)

THE METROPOLITAN POLICE DEPARTMENT OF THE
CITY OF ST. LOUIS, MISSOURI

Notes to Financial Statements

The Special Revenue Funds are comprised of several grants and contracts with various Federal, state, and local agencies. The budgets are prepared at the time the grant or contract document is presented for approval to the appropriate Federal, state, or local agency and may extend beyond one year. Annual budgets are not prepared on the grants and contracts currently in process and, accordingly, budget to actual comparisons are not presented.

(3) Pension Plans

Police Officers

All commissioned police officers are covered under the Alternative Police Retirement System of St. Louis. Members of the Plan contribute at a rate of 7% of their base compensation. The City of St. Louis makes contributions to the Plan on behalf of its members. These contributions are not budgeted for in the Department's general appropriations process and are not reflected in the financial statements of the Department. The contributions from the City for the year were \$7,716,358. The unfunded accrued liability at April 30, 1981 determined by the actuary in accordance with the provisions of accounting principles Board Opinion #8 was \$23,100,645.

Department Full-Time Civilian Personnel

Department full-time civilian personnel continuously employed for one year and at least 25 years of age are eligible for participation in the noncontributory Employees Retirement System of the City of St. Louis. Department contributions are budgeted for in the general appropriations process, made quarterly, and are recorded in the General Expenditures Fund.

Contributions were made at a rate of 11.46% of the total civilians' salaries budgeted, which amounted to \$885,559 for the year. The Plan covers all eligible City employees who are not police officers. As a result, the excess, if any, of the actuarially computed value of vested benefits over the total pension fund and accruals, less prepayments or deferred charges, is not determinable for the Department personnel.

(4) Pending Litigation

A number of suits against the Department are presently pending for alleged civil rights violations and negligence in the line of duty. It is expected that the final settlement of these matters will not have a material adverse effect on the financial position or results of operations of the Department.

(Continued)

THE METROPOLITAN POLICE DEPARTMENT OF THE
CITY OF ST. LOUIS, MISSOURI

Notes to Financial Statements

(5) Liability for Overtime

Traditionally, the Department has not treated the half-hour meal period as working time. On May 1, 1977, a new law went into effect which provided that police officers must be paid overtime for all hours worked in excess of an eight hour day. On July 14, 1978, three police officers filed a lawsuit in St. Louis Circuit Court challenging the Department's policy with respect to the half-hour meal period. On March 28, 1979, the Circuit Court decided that the meal period is to be treated as time worked and that overtime compensation must be paid for any time worked in excess of eight hours. The Court ordered that the officers be compensated for any such overtime incurred after May 1, 1977.

On April 21, 1981 and June 18, 1981, the Department presented to the St. Louis Circuit Court for approval, its calculations of overtime compensation for the periods June 17, 1978 to March 26, 1979 and March 27, 1979 to April 30, 1980. The amounts for these periods, which were approved by the St. Louis Circuit Court, were \$460,672 and \$279,532, respectively. The amounts have been reflected in the expenditures for fiscal year 1981.

On April 21, 1981, the St. Louis Circuit Court ruled that the claim for overtime compensation for the period May 1, 1977 to June 16, 1978, was barred by the statutes of limitation. The police officers have filed an appeal of the court's ruling. It is the opinion of the Department's legal counsel that the St. Louis Circuit Court ruling will be upheld. Accordingly, no provision for the liability has been made at April 30, 1981.

END