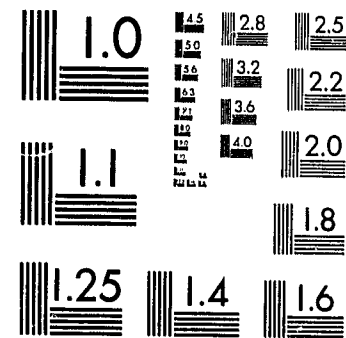


National Criminal Justice Reference Service

**ncjrs**

This microfiche was produced from documents received for inclusion in the NCJRS data base. Since NCJRS cannot exercise control over the physical condition of the documents submitted, the individual frame quality will vary. The resolution chart on this frame may be used to evaluate the document quality.



MICROCOPY RESOLUTION TEST CHART  
NATIONAL BUREAU OF STANDARDS-1963-A

Microfilming procedures used to create this fiche comply with the standards set forth in 41CFR 101-11.504.

Points of view or opinions stated in this document are those of the author(s) and do not represent the official position or policies of the U. S. Department of Justice.

National Institute of Justice  
United States Department of Justice  
Washington, D. C. 20531

3/8/83

OFFENDERS RELEASED FROM ADULT CORRECTIONAL INSTITUTIONS  
CALENDAR 1980



82724

DEPARTMENT OF HEALTH AND SOCIAL SERVICES  
DIVISION OF CORRECTIONS  
OFFICE OF INFORMATION MANAGEMENT  
MADISON, WISCONSIN 53707

STATISTICAL BULLETIN C-54

OCTOBER 1981

U.S. Department of Justice  
National Institute of Justice

This document has been reproduced exactly as received from the person or organization originating it. Points of view or opinions stated in this document are those of the authors and do not necessarily represent the official position or policies of the National Institute of Justice.

Permission to reproduce this copyrighted material has been granted by

Wisconsin Division of  
Corrections

to the National Criminal Justice Reference Service (NCJRS).

Further reproduction outside of the NCJRS system requires permission of the copyright owner.

STATE OF WISCONSIN

DEPARTMENT OF HEALTH AND SOCIAL SERVICES

DONALD E. PERCY, SECRETARY

DIVISION OF CORRECTIONS

ELMER O. CADY, ADMINISTRATOR

LEE ROY BLACK, PH.D., DEPUTY ADMINISTRATOR

STEVE H. KRONZER, ASSISTANT ADMINISTRATOR

OFFICE OF INFORMATION MANAGEMENT

TED H. JOHNSON, DIRECTOR

CARL F. SAM, SYSTEMS AND MANAGEMENT ANALYSIS SECTION

TABLE OF CONTENTS

	Page
Offenders Released From Division of Corrections Adult Institutions in 1980, Narrative	1
Table 1 Type of Release by Institution-----	6
Table 2 Offense-----	8
Table 3 Length of Sentence-----	10
Table 4 County of Commitment-----	12
Table 5 Length of Stay Since Most Recent Admission-----	15
Table 6 Total Length of Stay Since Last New Admission-----	16
Table 7 Race and Ethnicity-----	17
Table 8 Type of Offender-----	17
Table 9 Number of Releases Since Last New Admission-----	18
Table 10 Released on Detainer-----	18
Table 11 Mutual Agreement Program (MAP) Contract Release-----	19
Table 12 Adult Basic Education Program Participation-----	19
Table 13 GED or HED Program Participation-----	20
Table 14 High School Program Participation-----	20
Table 15 Alcohol or Other Drug Program Participation-----	21
Table 16 Work Release Program Participation-----	21
Table 17 Study Release Program Participation-----	22
Table 18 Vocational or Apprenticeship Program Participation-----	22
Table 19 College Study Participation-----	23
Table 20 College Credits Earned-----	24
Table 21 Length of Stay Since Most Recent Admission by Offense-----	25
Table 22 Length of Stay Since Most Recent Admission by Length of Sentence-----	27

OFFENDERS RELEASED FROM

DIVISION OF CORRECTIONS ADULT INSTITUTIONS IN 1980

The report describes adult offenders who were first and rereleased from Wisconsin adult correctional institutions during calendar year 1980. Adult correctional institutions of release were Waupun Correctional Institution, Green Bay Correctional Institution, Dodge Correctional Institution, Fox Lake Correctional Institution, Kettle Moraine Correctional Institution, Taycheedah Correctional Institution, Oakhill Correctional Institution, Wisconsin Correctional Camp System, and Community Corrections Residential Centers.

Tables A, B, C, and D show trends in selected characteristics of adult releases during the past five years. The number of first-released and rereleased adult offenders (both males and females) fluctuated by as much as 8.4 percent from year to year and by 13.2 percent during the five-year period. Increasing from 1,411 in 1976 to 1,530 in 1977, the total number of releases dropped to 1,471 in 1978, rose to 2.9 percent to 1,513 in 1979 and rose 5.6 percent to 1,597 in 1980.

The reporting form for releases from adult correctional institutions was revised in November 1979. The information on work records, loss of privileges, lockups, and group counseling sessions was dropped and, henceforth, will not appear in the five-year comparisons.

Adult Male First Releases

As shown in Table A, the 1,235 adult male first releases in 1980 is the high for the five-year period. The low for the period was 1,115 in 1976 and the previous high, 1,194, was in 1977. The proportion of released men who had been committed from Milwaukee County rose to 44.3 percent, the highest level in the five-year period.

The median length of stay edged upward during the period, rising from 18.1 months in 1977 to 21.1 months in 1980. It rose by 1.2 months in 1978 and 1979 but only by 0.6 month in 1980.

Average (mean) lengths of stay ranged from a low of 22.7 months in 1976 to a high of 25.4 months in 1979 and 1980. The mean length of stay increased 3.7 percent in 1976, increased 2.2 percent in 1977, decreased 1.7 percent in 1978, increased 11.4 percent in 1979 and did not change in 1980.

Table A  
Selected Characteristics for First-Released Adult Males  
1976 - 1980

Characteristics	Calendar Year				
	1976	1977	1978	1979	1980
<u>Total Adult Males First-Released</u>	<u>1,115</u>	<u>1,194</u>	<u>1,178</u>	<u>1,175</u>	<u>1,235</u>
Average (median) length of stay, in months	18.7	18.1	19.3	20.5	21.1
Average (mean) length of stay, in months	22.7	23.2	22.8	25.4	25.4
Percent with Milwaukee County commitments	39.4	40.2	41.0	37.5	44.3

#### Adult Female Releases

The number of adult female first releases rose from 64 in 1975 to 84 in 1979 and dropped to 70 in 1980. The proportion of first releases from Milwaukee County ranged from 48.6 percent in 1976 to 53.6 percent in 1979. Median length of stay rose in 1980 to a five-year high of 18.4 months, 1.9 months longer than in 1979. The mean length of stay declined slightly in 1980 to 21.4 months from 21.7 months in 1979.

Table B  
Selected Characteristics for First-Released Adult Females  
1976 - 1980

Characteristics	Calendar Year				
	1976	1977	1978	1979	1980
<u>Total Adult Females First-Released</u>	<u>72</u>	<u>80</u>	<u>70</u>	<u>84</u>	<u>70</u>
Average (median) length of stay, in months	14.3	14.7	13.8	16.5	18.4
Average (mean) length of stay, in months	15.0	14.8	18.2	21.7	21.4
Percent with Milwaukee County commitments	48.6	50.0	48.6	53.6	52.9

#### First-Released and Rereleased Adult Males Compared

Trends during the five-year period of 1976-1980 for selected characteristics of first and rereleased adult males may be compared in Tables A and C. Table C shows that the percentage of male rereleases ranged from 15.8 percent in 1978 to 18.8 percent in 1980. Total males released rose from 1,334 in 1976 to 1,446 in 1977, dropped to 1,399 in 1978, rose to 1,420 in 1979, and rose to 1,521 in 1980.

Median length of stay for rereleased men dropped from 18.6 months in 1977 to 13.0 months in 1978, edging up to 15.4 months in 1979 and dropping to 12.2 months in 1980. The gap between the median length of stay for first releases and rereleases has widened from less than one month to about nine months.

Each year during the five-year period, a higher proportion of rereleased males were Milwaukee County commitments (average 47.4 percent) than first-released males (average 40.5 percent). However, the proportion of rereleases from Milwaukee County declined steadily from 1976 through 1979 and rose slightly in 1980.

Table C  
Selected Characteristics for Rereleased Adult Males  
1976 - 1980

Characteristics	Calendar Year				
	1976	1977	1978	1979	1980
<u>Total Adult Males Rereleased</u>	<u>219</u>	<u>252</u>	<u>221</u>	<u>245</u>	<u>286</u>
Percent rereleased of total adult male releases	16.4	17.4	15.8	17.3	18.8
Average (median) length of stay, in months	17.8	18.6	13.0	15.4	12.2
Average (mean) length of stay, in months	20.6	20.8	18.6	20.6	19.2
Percent with Milwaukee County commitments	51.6	50.8	45.7	44.1	44.8

First-Released and Rereleased Adult Females Compared

Five-year trends for selected characteristics of first and rereleased adult females may be compared in Tables B and D. Because fewer than 10 women were rereleased each year, their selected characteristics sometimes varied widely from year to year.

The proportion of rereleased females among total females ranged from a low of 2.8 percent in 1978 to a high of 9.7 percent in 1979. The total number of females released annually rose from 72 in 1978 to 93 in 1979 and dropped to 76 in 1980.

In each of the five years, the median length of stay of female first releases and rereleases was shorter than that of their male counterparts. The difference ranged from 2.7 to 13.3 months.

Table D  
Selected Characteristics for Rereleased Adult Males  
1976 - 1980

Characteristics	Calendar Year				
	1976	1977	1978	1979	1980
<u>Total Adult Females Rereleased</u>	<u>5</u>	<u>4</u>	<u>2</u>	<u>9</u>	<u>6</u>
Percent rereleased of total adult female releases	6.5	4.8	2.8	9.7	7.9
Average (median) length of stay, in months	4.5	N/A	N/A	5.0	6.0
Average (mean) length of stay, in months	5.4	18.2	6.0	12.9	8.8
Percent with Milwaukee County commitments	60.0	50.0	0.0	33.4	50.0

The set of 22 supplemental tables provides detailed information about adults released during calendar year 1980 from Wisconsin adult correctional institutions. Tables 6 and 9 contain details about rereleases only, Tables 21 and 22, first releases only, and the other tables, both first releases and rereleases.

Prepared by: Office of Information Management  
Division of Corrections  
P.O. Box 7925  
Madison, WI 53707

F/14

Table I  
TYPE OF RELEASE BY INSTITUTION  
RESIDENTS RELEASED FROM  
WISCONSIN ADULT CORRECTIONAL INSTITUTIONS  
CALENDAR YEAR 1980

TYPE OF RELEASE	Total Releases	Facilities for Men												Facilities for Women		
		Total Men	YCI	GBCI	DCI	FLCI	KMCI	OCI	WCCS	AETP	DTP	ERP	BOC	Total Women	TCI	BOC
<u>TOTAL RESIDENTS</u>	<u>1,645</u>	<u>1,567</u>	<u>285</u>	<u>246</u>	<u>41</u>	<u>97</u>	<u>69</u>	<u>145</u>	<u>256</u>	<u>116</u>	<u>10</u>	<u>10</u>	<u>292</u>	<u>78</u>	<u>52</u>	<u>26</u>
<u>First Release</u>	<u>1,305</u>	<u>1,235</u>	<u>187</u>	<u>186</u>	<u>37</u>	<u>74</u>	<u>61</u>	<u>116</u>	<u>225</u>	<u>99</u>	<u>6</u>	<u>10</u>	<u>234</u>	<u>70</u>	<u>45</u>	<u>25</u>
Adult Parole	540	508	17	19	22	27	19	65	128	64	3	10	134	32	14	18
Adult Mandatory Release (MR)	675	643	142	157	15	29	36	48	86	30	3	-	97	32	26	6
Adult Direct Discharge	2	2	1	-	-	-	-	-	-	1	-	-	-	-	-	-
Adult Discharge By Court	47	41	24	7	-	-	4	2	4	-	-	-	-	6	5	1
Youthful Offender (YO) Parole	13	13	-	-	-	4	-	1	4	2	-	-	2	-	-	-
YO Discharge By Court	1	1	-	-	-	1	-	-	-	-	-	-	-	-	-	-
YO MR	22	22	-	1	-	13	2	-	3	2	-	-	1	-	-	-
Death	5	5	3	2	-	-	-	-	-	-	-	-	-	-	-	-
<u>Rerelease</u>	<u>292</u>	<u>286</u>	<u>87</u>	<u>50</u>	<u>4</u>	<u>22</u>	<u>8</u>	<u>29</u>	<u>30</u>	<u>7</u>	<u>4</u>	<u>-</u>	<u>45</u>	<u>6</u>	<u>5</u>	<u>1</u>
Adult Parole	23	22	1	1	-	1	3	3	8	1	-	-	4	1	-	1
Adult MR	200	197	55	33	3	14	5	23	20	6	3	-	35	3	3	-
Adult Direct Discharge	55	53	24	15	1	3	-	3	2	-	1	-	4	2	2	-
Adult Discharge By Court	7	7	6	1	-	-	-	-	-	-	-	-	-	-	-	-
YO Direct Discharge By Court	3	3	-	-	-	2	-	-	-	-	-	-	1	-	-	-
YO MR	3	3	-	-	-	2	-	-	-	-	-	-	1	-	-	-
Death	1	1	1	-	-	-	-	-	-	-	-	-	-	-	-	-
<u>Release After Adm. Pend. Rev. Hrg.</u>	<u>22</u>	<u>20</u>	<u>10</u>	<u>9</u>	<u>-</u>	<u>1</u>	<u>-</u>	<u>-</u>	<u>-</u>	<u>-</u>	<u>-</u>	<u>-</u>	<u>-</u>	<u>2</u>	<u>2</u>	<u>-</u>
Adult Parole	4	3	2	1	-	-	-	-	-	-	-	-	-	1	1	-
Adult MR	9	9	7	2	-	-	-	-	-	-	-	-	-	-	-	-
Adult Probation	9	8	1	6	-	1	-	-	-	-	-	-	-	1	1	-
<u>Release After Completion of Contract In Lieu of Revocation</u>	<u>24</u>	<u>24</u>	<u>-</u>	<u>-</u>	<u>-</u>	<u>-</u>	<u>-</u>	<u>-</u>	<u>1</u>	<u>10</u>	<u>-</u>	<u>-</u>	<u>13</u>	<u>-</u>	<u>-</u>	<u>-</u>
Adult MR	2	2	-	-	-	-	-	-	-	1	-	-	1	-	-	-
Adult Probation	22	22	-	-	-	-	-	-	1	9	-	-	12	-	-	-
<u>Release of Erroneous Admission</u>	<u>2</u>	<u>2</u>	<u>1</u>	<u>1</u>	<u>-</u>	<u>-</u>	<u>-</u>	<u>-</u>	<u>-</u>	<u>-</u>	<u>-</u>	<u>-</u>	<u>-</u>	<u>-</u>	<u>-</u>	<u>-</u>

TABLE 1 (Concluded)

TYPE OF RELEASE	Total Releases	Facilities for Men												Facilities for Women		
		Total Men	WCI	GBCI	DCI	FLCI	KMCI	CCI	WCCS	AETP	DTP	ERP	BOC	Total Women	TCI	BOC
<u>TOTAL PERCENT OF RESIDENTS</u>	<u>100.0</u>	<u>100.0</u>	<u>100.0</u>	<u>100.0</u>	<u>100.0</u>	<u>100.0</u>	<u>100.0</u>	<u>100.0</u>	<u>100.0</u>	<u>100.0</u>	<u>100.0</u>	<u>100.0</u>	<u>100.0</u>	<u>100.0</u>	<u>100.0</u>	<u>100.0</u>
<u>First Release</u>	<u>79.3</u>	<u>78.8</u>	<u>65.6</u>	<u>75.6</u>	<u>90.2</u>	<u>76.3</u>	<u>88.4</u>	<u>80.0</u>	<u>87.9</u>	<u>85.4</u>	<u>60.0</u>	<u>100.0</u>	<u>80.1</u>	<u>89.7</u>	<u>86.6</u>	<u>96.2</u>
Adult Parole	32.3	32.4	6.0	7.7	53.6	27.9	27.5	44.8	50.0	55.2	30.0	100.0	45.9	41.0	27.0	69.2
Adult Mandatory Release (MR)	41.0	41.0	49.8	63.8	36.6	29.9	52.2	33.1	33.8	25.9	30.0	-	33.2	41.0	50.0	23.1
Adult Direct Discharge	0.1	0.1	0.4	-	-	-	-	-	-	0.9	-	-	-	-	-	-
Adult Discharge By Court	2.9	2.6	8.4	2.9	-	-	5.8	1.4	1.6	-	-	-	-	7.7	9.6	3.9
Youthful Offender Parole (YO)	0.8	0.8	-	-	-	4.1	-	0.7	1.6	1.7	-	-	0.7	-	-	-
YO Discharge By Court	0.1	0.1	-	-	-	1.0	-	-	-	-	-	-	-	-	-	-
YO MR	1.3	1.4	-	0.4	-	13.4	2.9	-	1.1	1.7	-	-	0.3	-	-	-
Death	0.3	0.3	1.0	0.8	-	-	-	-	-	-	-	-	-	-	-	-
<u>Rerelease</u>	<u>17.8</u>	<u>18.3</u>	<u>30.5</u>	<u>20.3</u>	<u>9.8</u>	<u>22.7</u>	<u>11.6</u>	<u>20.0</u>	<u>11.7</u>	<u>6.0</u>	<u>40.0</u>	<u>-</u>	<u>15.4</u>	<u>7.7</u>	<u>9.6</u>	<u>3.8</u>
Adult Parole	1.4	1.4	0.4	0.4	-	1.0	4.4	2.1	3.1	0.9	-	-	1.4	1.3	-	3.8
Adult MR	12.2	12.6	19.3	13.4	7.3	14.4	7.2	15.8	7.8	5.1	30.0	-	12.0	3.8	5.8	-
Adult Direct Discharge	3.3	3.4	8.4	6.1	2.5	3.1	-	2.1	0.8	-	10.0	-	1.4	2.6	3.8	-
Adult Discharge By Court	0.4	0.4	2.1	0.4	-	-	-	-	-	-	-	-	-	-	-	-
YO Direct Discharge By Court	0.2	0.2	-	-	-	2.1	-	-	-	-	-	-	0.3	-	-	-
YO MR	0.2	0.2	-	-	-	2.1	-	-	-	-	-	-	0.3	-	-	-
Death	0.1	0.1	0.3	-	-	-	-	-	-	-	-	-	-	-	-	-
<u>Release After Adm. Pend. Rev. Hrg.</u>	<u>1.3</u>	<u>1.3</u>	<u>3.5</u>	<u>3.7</u>	<u>-</u>	<u>1.0</u>	<u>-</u>	<u>-</u>	<u>-</u>	<u>-</u>	<u>-</u>	<u>-</u>	<u>-</u>	<u>2.6</u>	<u>3.8</u>	<u>-</u>
Adult Parole	0.2	0.2	0.7	0.4	-	-	-	-	-	-	-	-	-	1.3	1.9	-
Adult MR	0.6	0.6	2.4	0.8	-	-	-	-	-	-	-	-	-	-	-	-
Adult Probation	0.5	0.5	0.4	2.5	-	1.0	-	-	-	-	-	-	-	1.3	1.9	-
<u>Release After Completion of Contract in Lieu of Revocation</u>	<u>1.5</u>	<u>1.5</u>	<u>-</u>	<u>-</u>	<u>-</u>	<u>-</u>	<u>-</u>	<u>-</u>	<u>0.4</u>	<u>8.6</u>	<u>-</u>	<u>-</u>	<u>4.5</u>	<u>-</u>	<u>-</u>	<u>-</u>
Adult MR	0.1	0.1	-	-	-	-	-	-	-	0.9	-	-	0.4	-	-	-
Adult Probation	1.4	1.4	-	-	-	-	-	-	0.4	7.7	-	-	4.1	-	-	-
<u>Release of Erroneous Admission</u>	<u>0.1</u>	<u>0.1</u>	<u>0.4</u>	<u>0.4</u>	<u>-</u>	<u>-</u>	<u>-</u>	<u>-</u>	<u>-</u>	<u>-</u>	<u>-</u>	<u>-</u>	<u>-</u>	<u>-</u>	<u>-</u>	<u>-</u>



TABLE 2  
OFFENSE  
Residents First and Rereleased From  
Wisconsin Adult Correctional Institutions  
In 1980

OFFENSE	FIRST RELEASES						RERELEASES					
	TOTAL		FACILITIES FOR MEN		FACILITIES FOR WOMEN		TOTAL		FACILITIES FOR MEN		FACILITIES FOR WOMEN	
	Number	Percent	Number	Percent	Number	Percent	Number	Percent	Number	Percent	Number	Percent
<u>TOTAL</u>	<u>1,305</u>	<u>100.0</u>	<u>1,235</u>	<u>100.0</u>	<u>70</u>	<u>100.0</u>	<u>292</u>	<u>100.0</u>	<u>286</u>	<u>100.0</u>	<u>6</u>	<u>100.0</u>
<u>Murder</u>	27	2.0	23	1.9	4	5.7	3	1.0	2	0.7	1	16.7
First-Degree /a	(9)	(0.7)	(7)	(0.6)	(2)	(2.9)	(-)	(-)	(-)	(-)	(-)	(-)
Second-Degree	(15)	(1.1)	(13)	(1.1)	(2)	(2.8)	(3)	(1.0)	(2)	(0.7)	(1)	(16.7)
Third-Degree	(3)	(0.2)	(3)	(0.2)	(-)	(-)	(-)	(-)	(-)	(-)	(-)	(-)
Attempted Murder	3	0.2	3	0.2	-	-	4	1.4	4	1.4	-	-
Manslaughter	7	0.5	6	0.5	1	1.4	-	-	-	-	-	-
Homicide	10	0.8	10	0.8	-	-	-	-	-	-	-	-
<u>Robbery</u>	247	18.9	237	19.2	10	14.3	61	20.9	61	21.3	-	-
Robbery, Unarmed	(55)	(4.2)	(53)	(4.3)	(2)	(2.9)	(20)	(6.9)	(20)	(7.0)	(-)	(-)
Robbery, Armed	(192)	(14.7)	(184)	(14.9)	(8)	(11.4)	(41)	(14.0)	(41)	(14.3)	(-)	(-)
Battery	63	4.8	58	4.7	5	7.1	9	3.1	9	3.1	-	-
Aggravated Battery Injury by	6	0.5	6	0.5	-	-	1	0.3	1	0.3	-	-
Conduct Reg. of Life	18	1.4	16	1.3	2	2.9	2	0.7	2	0.7	-	-
Injury by Negligent Use of												
Weapon	3	0.2	3	0.2	-	-	-	-	-	-	-	-
<u>Burglary</u>	363	27.8	359	29.1	4	5.7	94	32.2	92	32.2	2	33.3
Burglary, Unarmed	(357)	(27.3)	(353)	(28.6)	(4)	(5.7)	(91)	(31.2)	(89)	(31.1)	(2)	(33.3)
Burglary, Armed	(6)	(0.5)	(6)	(0.5)	(-)	(-)	(3)	(1.0)	(3)	(1.1)	(-)	(-)
Possession of Burglary Tools	2	0.2	2	0.2	-	-	1	0.3	1	0.3	-	-
Theft (Except Auto)	91	7.0	81	6.6	10	14.3	21	7.2	21	7.3	-	-
Receiving Stolen Property	10	0.8	10	0.8	-	-	1	0.3	1	0.4	-	-
Auto Theft	79	6.1	77	6.2	2	2.9	18	6.2	18	6.3	-	-
Fraud	15	1.1	9	0.7	6	8.6	5	1.7	5	1.7	-	-
Forgery	102	7.8	90	7.3	12	17.1	30	10.3	29	10.1	1	16.7
Issue Worthless Checks	6	0.5	5	0.4	1	1.4	2	0.7	-	-	2	33.3
Rape	12	0.9	12	1.0	-	-	4	1.4	4	1.4	-	-
Attempted Rape	3	0.2	3	0.2	-	-	3	1.0	3	1.0	-	-



TABLE 2 (Concluded)

OFFENSE	FIRST RELEASES						RERELEASES					
	TOTAL		FACILITIES FOR MEN		FACILITIES FOR WOMEN		TOTAL		FACILITIES FOR MEN		FACILITIES FOR WOMEN	
	Number	Percent	Number	Percent	Number	Percent	Number	Percent	Number	Percent	Number	Percent
Sexual Assault, 1st-Degree	20	1.5	19	1.5	1	1.4	2	0.7	2	0.7	-	-
Sexual Assault, 2nd-Degree	31	2.4	31	2.5	-	-	5	1.7	5	1.7	-	-
Sexual Assault, 3rd-Degree	10	0.8	10	0.8	-	-	1	0.3	1	0.4	-	-
Sexual Assault, 4th-Degree	3	0.2	3	0.2	-	-	-	-	-	-	-	-
Sex With Child	4	0.3	4	0.3	-	-	3	1.0	3	1.0	-	-
Incest	3	0.2	3	0.2	-	-	-	-	-	-	-	-
Indecent Behavior	3	0.2	3	0.2	-	-	2	0.7	2	0.7	-	-
Sexual Perversion	3	0.2	3	0.2	-	-	-	-	-	-	-	-
Soliciting Prostitution, Pandering	1	0.1	1	0.1	-	-	1	0.3	1	0.4	-	-
Uniform Controlled Substance Abuse	80	6.1	77	6.2	3	4.3	14	4.8	14	4.9	-	-
Narcotic Use	(3)	(0.2)	(2)	(0.2)	(1)	(1.4)	(1)	(0.3)	(1)	(0.3)	(-)	(-)
Narcotic Sales	(30)	(2.3)	(28)	(2.2)	(2)	(2.9)	(7)	(2.4)	(7)	(2.4)	(-)	(-)
Hallucinogenic Sales	(8)	(0.6)	(8)	(0.6)	(-)	(-)	(1)	(0.3)	(1)	(0.4)	(-)	(-)
Other Drug Use & Place Using	(2)	(0.2)	(2)	(0.2)	(-)	(-)	(1)	(0.4)	(1)	(0.4)	(-)	(-)
Other Drug Sales	(37)	(2.8)	(37)	(3.0)	(-)	(-)	(4)	(1.4)	(4)	(1.4)	(-)	(-)
Concealed Weapons	6	0.5	5	0.4	1	1.4	-	-	-	-	-	-
Escape	9	0.7	7	0.6	2	2.9	-	-	-	-	-	-
Resisting Officer	1	0.1	1	0.1	-	-	-	-	-	-	-	-
Arson	18	1.4	18	1.5	-	-	-	-	-	-	-	-
Unsafe Burning	1	0.1	1	0.1	-	-	-	-	-	-	-	-
Conspiracy to Crime	4	0.3	3	0.2	1	1.4	-	-	-	-	-	-
Bribery	2	0.2	2	0.2	-	-	-	-	-	-	-	-
Threat to Injure	2	0.2	2	0.2	-	-	-	-	-	-	-	-
Kidnapping	-	-	-	-	-	-	1	0.3	1	0.4	-	-
Criminal Damage	7	0.5	7	0.6	-	-	1	0.3	1	0.4	-	-
Abandonment	6	0.5	6	0.5	-	-	1	0.4	1	0.4	-	-
Perjury	4	0.3	2	0.2	2	2.9	-	-	-	-	-	-
Enticing a Child	2	0.1	2	0.2	-	-	1	0.4	1	0.4	-	-
Prostitution	1	0.1	-	-	1	1.4	-	-	-	-	-	-
Vagrancy	1	0.1	1	0.1	-	-	1	0.4	1	0.4	-	-
All Other	16	1.2	14	1.1	2	2.9	-	-	-	-	-	-

/a The nine first-degree murder cases consist of three males with life sentences, one male each with a sentence of seven, fifteen, forty, and fifty years, one female with a life sentence, and one female with a four year sentence.

F/13/1m

TABLE 3  
LENGTH OF SENTENCE  
Residents First And Rereleased From  
Wisconsin Adult Correctional Institutions  
In 1980

LENGTH OF SENTENCE	FIRST RELEASES						RERELEASES					
	TOTAL		FACILITIES FOR MEN		FACILITIES FOR WOMEN		TOTAL		FACILITIES FOR MEN		FACILITIES FOR WOMEN	
	Number	Percent	Number	Percent	Number	Percent	Number	Percent	Number	Percent	Number	Percent
<u>TOTAL</u>	<u>1,305</u>	<u>100.0</u>	<u>1,235</u>	<u>100.0</u>	<u>70</u>	<u>100.0</u>	<u>292</u>	<u>100.0</u>	<u>286</u>	<u>100.0</u>	<u>6</u>	<u>100.0</u>
1.0 Year, Less Than 1.5	62	4.7	57	4.6	5	7.2	4	1.4	4	1.4	-	-
1.5 Year, Less Than 2.0	107	8.2	106	8.6	1	1.4	11	3.8	10	3.5	1	16.7
2.0 Years, Less Than 2.5	235	18.0	220	17.8	15	21.4	24	8.2	23	8.0	1	16.7
2.5 Years, Less Than 3.0	75	5.7	67	5.4	8	11.4	11	3.8	11	3.8	-	-
3.0 Years, Less Than 3.5	266	20.4	248	20.1	18	25.7	51	17.5	50	17.5	1	16.7
3.5 Years, Less Than 4.0	19	1.5	18	1.4	1	1.4	11	3.8	11	3.8	-	-
4.0 Years, Less Than 4.5	104	8.0	100	8.1	4	5.7	29	9.9	29	10.1	-	-
4.5 Years, Less Than 5.0	12	0.9	11	0.9	1	1.4	7	2.4	7	2.4	-	-
5 Years, Less Than 6	165	12.6	154	12.4	11	15.7	51	17.5	49	17.1	2	33.3
6 Years, Less Than 7	32	2.4	32	2.6	-	-	8	2.7	8	2.8	-	-
7 Years, Less Than 8	65	5.0	64	5.2	1	1.4	22	7.5	22	7.7	-	-
8 Years, Less Than 9	25	1.9	25	2.0	-	-	10	3.4	10	3.5	-	-
9 Years, Less Than 10	13	1.0	13	1.0	-	-	3	1.0	3	1.1	-	-
10 Years, Less Than 11	54	4.1	53	4.3	1	1.4	18	6.2	18	6.3	-	-
11 Years, Less Than 12	6	0.5	6	0.5	-	-	-	-	-	-	-	-
12 Years, Less Than 13	12	0.9	12	1.0	-	-	2	0.7	2	0.7	-	-
13 Years, Less Than 14	2	0.2	2	0.2	-	-	3	1.0	3	1.1	-	-
14 Years, Less Than 15	6	0.5	5	0.4	1	1.4	-	-	-	-	-	-
15 Years, Less Than 16	16	1.2	15	1.2	1	1.5	11	3.8	10	3.5	1	16.6
16 Years, Less Than 17	2	0.2	2	0.2	-	-	4	1.4	4	1.4	-	-
17 Years, Less Than 18	-	-	-	-	-	-	-	-	-	-	-	-
18 Years, Less Than 19	6	0.5	6	0.5	-	-	-	-	-	-	-	-
19 Years, Less Than 20	-	-	-	-	-	-	-	-	-	-	-	-

10

TABLE 3 (Concluded)

LENGTH OF SENTENCE	FIRST RELEASES						RERELEASES					
	TOTAL		FACILITIES FOR MEN		FACILITIES FOR WOMEN		TOTAL		FACILITIES FOR MEN		FACILITIES FOR WOMEN	
	Number	Percent	Number	Percent	Number	Percent	Number	Percent	Number	Percent	Number	Percent
20 Years, Less Than 25	7	0.5	6	0.5	1	1.5	8	2.7	8	2.8	-	-
25 Years, Less Than 30	1	0.1	1	0.1	-	-	3	1.0	3	1.1	-	-
30 Years, Less Than 35	7	0.5	7	0.6	-	-	1	0.3	1	0.4	-	-
35 Years, Less Than 40	-	-	-	-	-	-	-	-	-	-	-	-
40 Years or More	2	0.2	2	0.2	-	-	-	-	-	-	-	-
Life /a	4	0.3	3	0.2	1	1.5	-	-	-	-	-	-
Median (In Months) /b	39.9		40.0		37.8		58.3		58.3		51.0	
Mean (In Months)	53.1		53.6		44.7		72.4		72.6		63.0	

/a See Footnote Table 2.

/b The median and mean length of sentence do not include the length of sentence of life.

F-13/lm

TABLE 4  
COUNTY OF COMMITMENT  
Residents First and Rereleased From  
Wisconsin Adult Correctional Institutions  
In 1980

COUNTY OF COMMITMENT	FIRST RELEASES						RERELEASES					
	TOTAL		FACILITIES FOR MEN		FACILITIES FOR WOMEN		TOTAL		FACILITIES FOR MEN		FACILITIES FOR WOMEN	
	Number	Percent	Number	Percent	Number	Percent	Number	Percent	Number	Percent	Number	Percent
<u>TOTAL RESIDENTS</u>	<u>1,305</u>	<u>100.0</u>	<u>1,235</u>	<u>100.0</u>	<u>70</u>	<u>100.0</u>	<u>292</u>	<u>100.0</u>	<u>286</u>	<u>100.0</u>	<u>6</u>	<u>100.0</u>
Adams	7	0.5	6	0.5	1	1.4	1	0.3	1	0.3	-	-
Ashland	3	0.2	3	0.2	-	-	1	0.3	1	0.3	-	-
Barron	2	0.2	2	0.2	-	-	2	0.7	2	0.7	-	-
Bayfield	3	0.2	3	0.2	-	-	1	0.3	1	0.3	-	-
Brown	52	4.0	50	4.0	2	2.9	8	2.7	8	2.8	-	-
Buffalo	-	-	-	-	-	-	-	-	-	-	-	-
Burnett	3	0.2	3	0.2	-	-	-	-	-	-	-	-
Calumet	1	0.1	1	0.1	-	-	-	-	-	-	-	-
Chippewa	1	0.1	1	0.1	-	-	-	-	-	-	-	-
Clark	-	-	-	-	-	-	1	0.3	1	0.3	-	-
Columbia	11	0.8	11	0.9	-	-	1	0.3	1	0.3	-	-
Crawford	4	0.3	4	0.3	-	-	1	0.3	1	0.3	-	-
Dane	42	3.2	40	3.2	2	2.9	18	6.2	18	6.3	-	-
Dodge	11	0.8	11	0.9	-	-	1	0.3	1	0.3	-	-
Door	8	0.6	8	0.6	-	-	-	-	-	-	-	-
Douglas	12	0.9	11	0.9	1	1.4	2	0.7	2	0.7	-	-
Dunn	5	0.4	5	0.4	-	-	2	0.7	2	0.7	-	-
Eau Claire	13	1.0	11	0.9	2	2.9	5	1.7	5	1.7	-	-
Florence	4	0.3	4	0.3	-	-	-	-	-	-	-	-
Fond du Lac	21	1.6	17	1.4	4	5.7	4	1.4	4	1.4	-	-
Forest	1	0.1	1	0.1	-	-	1	0.3	1	0.3	-	-
Grant	13	1.0	12	1.0	1	1.4	-	-	-	-	-	-
Green	1	0.1	1	0.1	-	-	1	0.3	1	0.3	-	-
Green Lake	3	0.2	2	0.2	1	1.4	1	0.3	1	0.3	-	-
Iowa	4	0.3	4	0.3	-	-	-	-	-	-	-	-

TABLE 4 (Continued)

COUNTY OF COMMITMENT	FIRST RELEASES						RERELEASES					
	TOTAL		FACILITIES FOR MEN		FACILITIES FOR WOMEN		TOTAL		FACILITIES FOR MEN		FACILITIES FOR WOMEN	
	Number	Percent	Number	Percent	Number	Percent	Number	Percent	Number	Percent	Number	Percent
Iron	1	0.1	1	0.1	-	-	1	0.3	1	0.3	-	-
Jackson	6	0.5	6	0.5	-	-	-	-	-	-	-	-
Jefferson	11	0.8	11	0.9	-	-	3	1.0	2	0.7	1	16.7
Juneau	5	0.4	5	0.4	-	-	2	0.7	2	0.7	-	-
Kenosha	72	5.5	69	5.6	3	4.3	16	5.5	16	5.6	-	-
Kewaunee	-	-	-	-	-	-	-	-	-	-	-	-
LaCrosse	24	1.8	24	1.9	-	-	6	2.1	6	2.1	-	-
Lafayette	-	-	-	-	-	-	1	0.3	-	-	1	16.7
Langlade	4	0.3	4	0.3	-	-	2	0.7	2	0.7	-	-
Lincoln	7	0.5	7	0.6	-	-	-	-	-	-	-	-
Manitowoc	5	0.4	5	0.4	-	-	3	1.0	3	1.0	-	-
Marathon	27	2.1	24	1.9	3	4.3	1	0.3	1	0.4	-	-
Marinette	12	0.9	11	0.9	1	1.4	-	-	-	-	-	-
Marquette	3	0.2	3	0.2	-	-	-	-	-	-	-	-
Menominee	-	-	-	-	-	-	1	0.3	1	0.4	-	-
Milwaukee	584	44.7	547	44.3	37	52.9	131	44.98	128	44.8	3	50.0
Monroe	3	0.2	3	0.2	-	-	3	1.0	3	1.0	-	-
Oconto	10	0.8	10	0.8	-	-	2	0.7	2	0.7	-	-
Oneida	10	0.8	10	0.8	-	-	2	0.7	2	0.7	-	-
Outagamie	14	1.1	13	1.1	1	1.4	3	1.0	3	1.0	-	-
Ozaukee	6	0.5	5	0.4	1	1.4	2	0.7	2	0.7	-	-
Pepin	1	0.1	1	0.1	-	-	-	-	-	-	-	-
Pierce	5	0.4	5	0.4	-	-	-	-	-	-	-	-
Polk	2	0.2	2	0.2	-	-	2	0.7	2	0.7	-	-
Portage	5	0.4	4	0.3	1	1.4	1	0.3	1	0.4	-	-
Price	1	0.1	1	0.1	-	-	-	-	-	-	-	-
Racine	58	4.4	56	4.5	2	2.9	14	4.8	14	4.9	-	-
Richland	2	0.2	1	0.1	1	1.4	-	-	-	-	-	-
Rock	44	3.4	39	3.2	5	7.2	16	5.5	16	5.6	-	-
Rusk	2	0.2	2	0.2	-	-	1	0.3	1	0.4	-	-

TABLE 4 (Concluded)

COUNTY OF COMMITMENT	FIRST RELEASES						RERELEASES					
	TOTAL		FACILITIES FOR MEN		FACILITIES FOR WOMEN		TOTAL		FACILITIES FOR MEN		FACILITIES FOR WOMEN	
	Number	Percent	Number	Percent	Number	Percent	Number	Percent	Number	Percent	Number	Percent
St. Croix	16	1.2	16	1.3	-	-	2	0.7	2	0.7	-	-
Sauk	5	0.4	5	0.4	-	-	2	0.7	2	0.7	-	-
Sawyer	3	0.2	3	0.2	-	-	1	0.3	1	0.4	-	-
Shawano	12	0.9	12	1.0	-	-	1	0.4	1	0.4	-	-
Sheboygan	18	1.4	18	1.5	-	-	4	1.4	4	1.4	-	-
Taylor	5	0.4	5	0.4	-	-	-	-	-	-	-	-
Trempealeau	2	0.2	2	0.2	-	-	-	-	-	-	-	-
Vernon	2	0.2	2	0.2	-	-	1	0.4	1	0.4	-	-
Vilas	8	0.6	8	0.6	-	-	1	0.4	1	0.4	-	-
Walworth	15	1.1	15	1.2	-	-	1	0.4	1	0.4	-	-
Washburn	3	0.2	3	0.2	-	-	1	0.4	1	0.4	-	-
Washington	5	0.4	5	0.4	-	-	1	0.4	1	0.4	-	-
Waukesha	22	1.7	22	1.8	-	-	5	1.7	4	1.4	1	16.6
Waupaca	7	0.5	7	0.6	-	-	2	0.7	2	0.7	-	-
Waushara	2	0.2	2	0.2	-	-	1	0.4	1	0.4	-	-
Winnebago	16	1.2	16	1.3	-	-	1	0.4	1	0.4	-	-
Wood	15	1.1	14	1.1	1	1.4	3	1.0	3	1.0	-	-
No Data	-	-	-	-	-	-	1	0.4	1	0.4	-	-

F-13/lm

TABLE 5  
LENGTH OF STAY SINCE MOST RECENT ADMISSION  
Residents First and Rereleased from  
Wisconsin Adult Correctional Institutions in 1980

LENGTH OF STAY SINCE MOST RECENT ADMISSION	FIRST RELEASES						RERELEASES					
	TOTAL		FACILITIES FOR MEN		FACILITIES FOR WOMEN		TOTAL		FACILITIES FOR MEN		FACILITIES FOR WOMEN	
	Number	Percent	Number	Percent	Number	Percent	Number	Percent	Number	Percent	Number	Percent
<u>TOTAL</u>	<u>1,305</u>	<u>100.0</u>	<u>1,235</u>	<u>100.0</u>	<u>70</u>	<u>100.0</u>	<u>292</u>	<u>100.0</u>	<u>286</u>	<u>100.0</u>	<u>6</u>	<u>100.0</u>
Less than 6 months	30	2.3	29	2.3	1	1.4	68	23.3	65	22.7	3	50.0
6 mos., less than 1 year	193	14.8	181	14.7	12	17.2	79	27.1	77	26.9	2	33.3
1 yr., less than 1.5 yrs.	319	24.4	298	24.1	21	30.0	30	10.3	30	10.5	—	—
1.5 yr., less than 2 yrs.	228	17.5	213	17.3	15	21.4	26	8.9	26	9.1	—	—
2 yrs., less than 2.5 yrs.	180	13.8	166	13.4	14	20.0	24	8.2	23	8.0	1	16.7
2.5 yrs., less than 3 yrs.	250	19.2	246	19.9	4	5.7	50	17.1	50	17.5	—	—
3 yrs., less than 3.5 yrs.	—	—	—	—	—	—	—	—	—	—	—	—
3.5 yrs., less than 4 yrs.	—	—	—	—	—	—	—	—	—	—	—	—
4 yrs., less than 4.5 yrs.	—	—	—	—	—	—	—	—	—	—	—	—
4.5 yrs., less than 5 yrs.	22	1.7	22	1.8	—	—	2	0.7	2	0.7	—	—
5 yrs., less than 6 yrs.	49	3.7	48	3.9	1	1.4	6	2.1	6	2.1	—	—
6 yrs., less than 7 yrs.	14	1.1	13	1.1	1	1.4	1	0.3	1	0.4	—	—
7 yrs., less than 8 yrs.	11	0.8	11	0.9	—	—	5	1.7	5	1.7	—	—
8 yrs., less than 9 yrs.	4	0.3	4	0.3	—	—	—	—	—	—	—	—
9 yrs., less than 10 yrs.	1	0.1	—	—	1	1.5	—	—	—	—	—	—
10 yrs., less than 15 yrs.	4	0.3	4	0.3	—	—	1	0.3	1	0.4	—	—
15 years or more	—	—	—	—	—	—	—	—	—	—	—	—
Median (in months)	20.9		21.1		18.4		11.9		12.2		6.0	
Mean (in months)	25.2		25.4		21.4		19.0		19.2		8.8	

C-54/F13/ca



TABLE 6  
TOTAL LENGTH OF STAY SINCE LAST NEW ADMISSION <sup>/a</sup>  
Residents Rereleased from  
Wisconsin Adult Correctional Institutions in 1980

TOTAL LENGTH OF STAY SINCE LAST NEW ADMISSION	RERELEASES					
	TOTAL		FACILITIES FOR MEN		FACILITIES FOR WOMEN	
	Number	Percent	Number	Percent	Number	Percent
<u>TOTAL</u>	<u>292</u>	<u>100.0</u>	<u>286</u>	<u>100.0</u>	<u>6</u>	<u>100.0</u>
Less than 6 months	—	—	—	—	—	—
6 months, less than 1 year	4	1.4	4	1.4	—	—
1 year, less than 1.5 years	14	4.8	13	4.5	1	16.7
1.5 years, less than 2 years	27	9.3	26	9.1	1	16.7
2 years, less than 2.5 years	34	11.7	32	11.2	2	33.3
2.5 years, less than 3 years	111	38.0	109	38.1	2	33.3
3 years, less than 3.5 years	—	—	—	—	—	—
3.5 years, less than 4 years	—	—	—	—	—	—
4 years, less than 4.5 years	—	—	—	—	—	—
4.5 years, less than 5 years	14	4.8	14	4.9	—	—
5 years, less than 6 years	24	8.2	24	8.4	—	—
6 years, less than 7 years	24	8.2	24	8.4	—	—
7 years, less than 8 years	10	3.4	10	3.5	—	—
8 years, less than 9 years	7	2.4	7	2.4	—	—
9 years, less than 10 years	5	1.7	5	1.8	—	—
10 years, less than 15 years	17	5.8	17	5.9	—	—
15 years or more	1	0.3	1	0.4	—	—
Median (in months)	33.6		33.7		27.0	
Mean (in months)	52.1		52.6		31.5	

<sup>/a</sup> "Total length of stay since last new admission" for first releases is the same as the "length of stay since most recent admission" of first releases in Table 5.

C-54/F13/ca

TABLE 7  
RACE AND ETHNICITY  
Residents First and Rereleased from  
Wisconsin Adult Correctional Institutions in 1980

RACE AND ETHNICITY	FIRST RELEASES						RERELEASES					
	TOTAL		FACILITIES FOR MEN		FACILITIES FOR WOMEN		TOTAL		FACILITIES FOR MEN		FACILITIES FOR WOMEN	
	Number	Percent	Number	Percent	Number	Percent	Number	Percent	Number	Percent	Number	Percent
<u>TOTAL</u>	<u>1,305</u>	<u>100.0</u>	<u>1,235</u>	<u>100.0</u>	<u>70</u>	<u>100.0</u>	<u>292</u>	<u>100.0</u>	<u>286</u>	<u>100.0</u>	<u>6</u>	<u>100.0</u>
White, Non-Hispanic	804	61.6	772	62.5	32	45.7	181	62.0	177	61.9	4	66.7
White, Hispanic	33	2.5	32	2.6	1	1.4	8	2.7	8	2.8	—	—
Black, Non-Hispanic	434	33.2	399	32.3	35	50.0	98	33.6	96	33.6	2	33.3
Black, Hispanic	2	0.2	2	0.2	—	—	—	—	—	—	—	—
Native American	31	2.4	30	2.4	1	1.4	5	1.7	5	1.7	—	—
Asian	1	0.1	—	—	1	1.5	—	—	—	—	—	—

TABLE 8  
TYPE OF OFFENDER  
Residents First and Rereleased from  
Wisconsin Adult Correctional Institutions in 1980

TYPE OF OFFENDER	FIRST RELEASES						RERELEASES					
	TOTAL		FACILITIES FOR MEN		FACILITIES FOR WOMEN		TOTAL		FACILITIES FOR MEN		FACILITIES FOR WOMEN	
	Number	Percent	Number	Percent	Number	Percent	Number	Percent	Number	Percent	Number	Percent
<u>TOTAL</u>	<u>1,305</u>	<u>100.0</u>	<u>1,235</u>	<u>100.0</u>	<u>70</u>	<u>100.0</u>	<u>292</u>	<u>100.0</u>	<u>286</u>	<u>100.0</u>	<u>6</u>	<u>100.0</u>
Not Assaultive, sex or drugs	694	53.2	653	52.9	41	58.6	150	51.4	145	50.7	5	83.3
Drug offender only	86	6.6	82	6.6	4	5.7	17	5.8	17	5.9	—	—
Sex offender only	11	0.8	10	0.8	1	1.4	2	0.7	2	0.7	—	—
Drug and sex offender	—	—	—	—	—	—	1	0.3	1	0.4	—	—
Assaultive offender only	403	30.9	381	30.9	22	31.5	90	30.8	89	31.1	1	16.7
Assaultive and drugs	15	1.1	14	1.1	1	1.4	5	1.7	5	1.8	—	—
Assaultive and sex	95	7.3	94	7.6	1	1.4	25	8.6	25	8.7	—	—
Assaultive, sex & drugs	1	0.1	1	0.1	—	—	2	0.7	2	0.7	—	—

C-54/F13/ca

TABLE 9  
NUMBER OF RELEASES SINCE LAST NEW ADMISSION  
Residents Rereleased from  
Wisconsin Adult Correctional Institutions in 1980

NUMBER OF RELEASES	RERELEASES					
	TOTAL		FACILITIES FOR MEN		FACILITIES FOR WOMEN	
	Number	Percent	Number	Percent	Number	Percent
Total	292	100.0	286	100.0	6	100.0
1 Release	250	85.6	244	85.3	6	100.0
2 Releases	30	10.3	30	10.5	—	—
3 Releases	8	2.7	8	2.8	—	—
4 Releases	3	1.0	3	1.0	—	—
5 Releases	1	0.4	1	0.4	—	—

TABLE 10  
RELEASED ON DETAINER  
Residents First and Rereleased from  
Wisconsin Adult Correctional Institutions in 1980

RELEASED ON DETAINER	FIRST RELEASES						RERELEASES					
	TOTAL		FACILITIES FOR MEN		FACILITIES FOR WOMEN		TOTAL		FACILITIES FOR MEN		FACILITIES FOR WOMEN	
	Number	Percent	Number	Percent	Number	Percent	Number	Percent	Number	Percent	Number	Percent
TOTAL	1,305	100.0	1,235	100.0	70	100.0	292	100.0	286	100.0	6	100.0
Yes	49	3.7	46	3.7	3	4.3	20	6.8	20	7.0	—	—
No	1,255	96.2	1,188	96.2	67	95.7	272	93.2	266	93.0	6	100.0
No Data	1	0.1	1	0.1	—	—	—	—	—	—	—	—

TABLE 11  
MUTUAL AGREEMENT PROGRAM (MAP) CONTRACT RELEASE  
Residents First and Rereleased from  
Wisconsin Adult Correctional Institutions in 1980

MAP CONTRACT RELEASE	FIRST RELEASES						RERELEASES					
	TOTAL		FACILITIES FOR MEN		FACILITIES FOR WOMEN		TOTAL		FACILITIES FOR MEN		FACILITIES FOR WOMEN	
	Number	Percent	Number	Percent	Number	Percent	Number	Percent	Number	Percent	Number	Percent
<u>TOTAL</u>	<u>1,305</u>	<u>100.0</u>	<u>1,235</u>	<u>100.0</u>	<u>70</u>	<u>100.0</u>	<u>292</u>	<u>100.0</u>	<u>286</u>	<u>100.0</u>	<u>6</u>	<u>100.0</u>
Yes	184	14.1	168	13.6	16	22.9	4	1.4	4	1.4	—	—
No	1,119	85.7	1,065	86.2	54	77.1	288	98.6	282	98.6	6	100.0
No Data	2	0.2	2	0.2	—	—	—	—	—	—	—	—

TABLE 12  
ADULT BASIC EDUCATION PROGRAM PARTICIPATION  
Residents First and Rereleased from  
Wisconsin Adult Correctional Institutions in 1980

ADULT BASIC EDUCATION PARTICIPATION	FIRST RELEASES						RERELEASES					
	TOTAL		FACILITIES FOR MEN		FACILITIES FOR WOMEN		TOTAL		FACILITIES FOR MEN		FACILITIES FOR WOMEN	
	Number	Percent	Number	Percent	Number	Percent	Number	Percent	Number	Percent	Number	Percent
<u>TOTAL</u>	<u>1,305</u>	<u>100.0</u>	<u>1,235</u>	<u>100.0</u>	<u>70</u>	<u>100.0</u>	<u>292</u>	<u>100.0</u>	<u>286</u>	<u>100.0</u>	<u>6</u>	<u>100.0</u>
Participated, Completed	100	7.7	90	7.3	10	14.3	15	5.1	15	5.3	—	—
Participated, Did Not Complete	161	12.3	152	12.3	9	12.9	30	10.3	29	10.1	1	16.7
Did Not Participate	814	62.4	775	62.8	39	55.7	212	72.6	207	72.4	5	83.3
No Data	230	17.6	218	17.6	12	17.1	35	12.0	35	12.2	—	—

TABLE 13  
GED OR HED PROGRAM PARTICIPATION  
Residents First and Rereleased from  
Wisconsin Adult Correctional Institutions in 1980

GED OR HED PARTICIPATION	FIRST RELEASES						RERELEASES					
	TOTAL		FACILITIES FOR MEN		FACILITIES FOR WOMEN		TOTAL		FACILITIES FOR MEN		FACILITIES FOR WOMEN	
	Number	Percent	Number	Percent	Number	Percent	Number	Percent	Number	Percent	Number	Percent
<u>TOTAL</u>	<u>1,305</u>	<u>100.0</u>	<u>1,235</u>	<u>100.0</u>	<u>70</u>	<u>100.0</u>	<u>292</u>	<u>100.0</u>	<u>286</u>	<u>100.0</u>	<u>6</u>	<u>100.0</u>
Tested, Certificate Granted	298	22.9	282	22.8	16	22.9	31	10.6	31	10.8	--	--
Tested, No Certificate Granted	90	6.9	82	6.7	8	11.4	15	5.2	15	5.3	--	--
Course Work Only, No Testing	68	5.2	67	5.4	1	1.4	14	4.8	14	4.9	--	--
Did Not Participate	662	50.7	624	50.5	38	54.3	196	67.1	190	66.4	6	100.0
No Data	187	14.3	180	14.6	7	10.0	36	12.3	36	12.6	--	--

TABLE 14  
HIGH SCHOOL PROGRAM PARTICIPATION  
Residents First and Rereleased from  
Wisconsin Adult Correctional Institutions in 1980

20

HIGH SCHOOL PARTICIPATION	FIRST RELEASES						RERELEASES					
	TOTAL		FACILITIES FOR MEN		FACILITIES FOR WOMEN		TOTAL		FACILITIES FOR MEN		FACILITIES FOR WOMEN	
	Number	Percent	Number	Percent	Number	Percent	Number	Percent	Number	Percent	Number	Percent
<u>TOTAL</u>	<u>1,305</u>	<u>100.0</u>	<u>1,235</u>	<u>100.0</u>	<u>70</u>	<u>100.0</u>	<u>292</u>	<u>100.0</u>	<u>286</u>	<u>100.0</u>	<u>6</u>	<u>100.0</u>
Participated, Diploma Granted	36	2.7	35	2.8	1	1.4	4	1.4	4	1.4	--	--
Participated, No Diploma Granted	117	9.0	116	9.4	1	1.4	40	13.7	40	14.0	--	--
Did Not Participate	947	72.6	889	72.0	58	82.9	218	74.6	212	74.1	6	100.0
No Data	205	15.7	195	15.8	10	14.3	30	10.3	30	10.5	--	--

C-54/F13/ca

TABLE 15  
ALCOHOL OR OTHER DRUG PROGRAM PARTICIPATION  
Residents First and Rereleased From  
Wisconsin Adult Correctional Institutions  
In 1980

PROGRAM PARTICIPATION	FIRST RELEASES						RERELEASES					
	TOTAL		FACILITIES FOR MEN		FACILITIES FOR WOMEN		TOTAL		FACILITIES FOR MEN		FACILITIES FOR WOMEN	
	NUMBER	PERCENT	NUMBER	PERCENT	NUMBER	PERCENT	NUMBER	PERCENT	NUMBER	PERCENT	NUMBER	PERCENT
<u>TOTAL</u>	<u>1,305</u>	<u>100.0</u>	<u>1,235</u>	<u>100.0</u>	<u>70</u>	<u>100.0</u>	<u>292</u>	<u>100.0</u>	<u>286</u>	<u>100.0</u>	<u>6</u>	<u>100.0</u>
Alcohol Related	225	17.2	220	17.8	5	7.1	29	9.9	28	9.8	1	16.7
Other Drug Related	69	5.3	59	4.8	10	14.3	8	2.7	8	2.8	-	-
Alcohol and Other Drug Related	68	5.2	68	5.5	-	-	7	2.4	7	2.4	-	-
Did Not Participate	608	46.6	558	45.2	50	71.4	154	52.8	150	52.5	4	66.7
No Data	335	25.7	330	26.7	5	7.2	94	32.2	93	32.5	1	16.6

F/14

TABLE 16  
WORK RELEASE PROGRAM PARTICIPATION  
Residents First and Rereleased From  
Wisconsin Adult Correctional Institutions  
In 1980

21

WORK RELEASE PARTICIPATION	FIRST RELEASES						RERELEASES					
	TOTAL		FACILITIES FOR MEN		FACILITIES FOR WOMEN		TOTAL		FACILITIES FOR MEN		FACILITIES FOR WOMEN	
	NUMBER	PERCENT	NUMBER	PERCENT	NUMBER	PERCENT	NUMBER	PERCENT	NUMBER	PERCENT	NUMBER	PERCENT
<u>TOTAL</u>	<u>1,305</u>	<u>100.0</u>	<u>1,235</u>	<u>100.0</u>	<u>70</u>	<u>100.0</u>	<u>292</u>	<u>100.0</u>	<u>286</u>	<u>100.0</u>	<u>6</u>	<u>100.0</u>
Participated, Completed	341	26.1	316	25.6	25	35.7	59	20.2	58	20.3	1	16.7
Partic., Did Not Compl.	118	9.0	111	9.0	7	10.0	23	7.9	23	8.0	-	-
Did Not Participate	695	53.3	658	53.3	37	52.9	130	44.5	126	44.1	4	66.7
No Data	151	11.6	150	12.1	1	1.4	80	27.4	79	27.6	1	16.6

F/14

TABLE 17  
STUDY RELEASE PROGRAM PARTICIPATION  
Residents First and Rereleased From  
Wisconsin Adult Correctional Institutions  
In 1980

STUDY RELEASE PARTICIPATION	FIRST RELEASES						RERELEASES					
	TOTAL		FACILITIES FOR MEN		FACILITIES FOR WOMEN		TOTAL		FACILITIES FOR MEN		FACILITIES FOR WOMEN	
	NUMBER	PERCENT	NUMBER	PERCENT	NUMBER	PERCENT	NUMBER	PERCENT	NUMBER	PERCENT	NUMBER	PERCENT
<u>TOTAL</u>	<u>1,305</u>	<u>100.0</u>	<u>1,235</u>	<u>100.0</u>	<u>70</u>	<u>100.0</u>	<u>292</u>	<u>100.0</u>	<u>286</u>	<u>100.0</u>	<u>6</u>	<u>100.0</u>
Participated, Completed	60	4.6	49	4.0	11	15.7	7	2.4	7	2.4	-	-
Particip., Did Not Compl	56	4.3	51	4.1	5	7.1	8	2.7	8	2.8	-	-
Did Not Participate	1,029	78.8	981	79.4	48	68.6	195	66.8	189	66.1	6	100.0
No Data	160	12.3	154	12.5	6	8.6	82	28.1	82	28.7	-	-

F/14

TABLE 18  
VOCATIONAL OR APPRENTICESHIP PROGRAM PARTICIPATION  
Residents First and Rereleased From  
Wisconsin Adult Correctional Institutions  
In 1980

VOCATIONAL OR APPRENTICESHIP PARTICIPATION	FIRST RELEASES						RERELEASES					
	TOTAL		FACILITIES FOR MEN		FACILITIES FOR WOMEN		TOTAL		FACILITIES FOR MEN		FACILITIES FOR WOMEN	
	NUMBER	PERCENT	NUMBER	PERCENT	NUMBER	PERCENT	NUMBER	PERCENT	NUMBER	PERCENT	NUMBER	PERCENT
<u>TOTAL</u>	<u>1,305</u>	<u>100.0</u>	<u>1,235</u>	<u>100.0</u>	<u>70</u>	<u>100.0</u>	<u>292</u>	<u>100.0</u>	<u>286</u>	<u>100.0</u>	<u>6</u>	<u>100.0</u>
Participated	437	33.5	408	33.0	29	41.4	63	21.6	62	21.7	1	33.3
Did Not Participate	652	50.0	618	50.1	34	48.6	192	65.7	187	65.4	5	66.7
No Data	216	16.5	209	16.9	7	10.0	37	12.7	37	12.9	-	-

F/14



TABLE 19  
COLLEGE STUDY PARTICIPATION  
Residents First and Rereleased From  
Wisconsin Adult Correctional Institutions  
In 1980

COLLEGE STUDY PARTICIPATION	FIRST RELEASES						RERELEASES					
	TOTAL		FACILITIES FOR MEN		FACILITIES FOR WOMEN		TOTAL		FACILITIES FOR MEN		FACILITIES FOR WOMEN	
	NUMBER	PERCENT	NUMBER	PERCENT	NUMBER	PERCENT	NUMBER	PERCENT	NUMBER	PERCENT	NUMBER	PERCENT
<u>TOTAL</u>	<u>1,305</u>	<u>100.0</u>	<u>1,235</u>	<u>100.0</u>	<u>70</u>	<u>100.0</u>	<u>292</u>	<u>100.0</u>	<u>286</u>	<u>100.0</u>	<u>6</u>	<u>100.0</u>
Yes	89	6.8	76	6.2	13	18.6	12	4.1	12	4.2	-	-
No	1,034	79.2	986	79.8	48	68.6	253	86.6	247	86.4	6	100.0
No Data	182	14.0	173	14.0	9	12.8	27	9.3	27	9.4	-	-

F/14

TABLE 20  
COLLEGE CREDITS EARNED  
Residents First and Rereleased From  
Wisconsin Adult Correctional Institutions  
In 1980

COLLEGE CREDITS EARNED	FIRST RELEASES						RERELEASES					
	TOTAL		FACILITIES FOR MEN		FACILITIES FOR WOMEN		TOTAL		FACILITIES FOR MEN		FACILITIES FOR WOMEN	
	NUMBER	PERCENT	NUMBER	PERCENT	NUMBER	PERCENT	NUMBER	PERCENT	NUMBER	PERCENT	NUMBER	PERCENT
<u>TOTAL</u>	<u>1,305</u>	<u>100.0</u>	<u>1,235</u>	<u>100.0</u>	<u>70</u>	<u>100.0</u>	<u>292</u>	<u>100.0</u>	<u>286</u>	<u>100.0</u>	<u>6</u>	<u>100.0</u>
0	1,243	95.2	1,181	95.6	62	88.6	280	95.9	274	95.8	6	100.0
1-6	22	1.7	18	1.5	4	5.7	2	0.7	2	0.7	-	-
7-12	12	0.9	8	0.6	4	5.7	1	0.3	1	0.3	-	-
13-18	8	0.6	8	0.6	-	-	2	0.7	2	0.7	-	-
19-24	4	0.3	4	0.3	-	-	2	0.7	2	0.7	-	-
25-30	6	0.5	6	0.5	-	-	-	-	-	-	-	-
31-36	1	0.1	1	0.1	-	-	1	0.3	1	0.3	-	-
37-42	3	0.2	3	0.2	-	-	-	-	-	-	-	-
43-48	2	0.1	2	0.2	-	-	1	0.3	1	0.3	-	-
49-54	-	-	-	-	-	-	-	-	-	-	-	-
55-60	-	-	-	-	-	-	1	0.3	1	0.4	-	-
61-66	-	-	-	-	-	-	-	-	-	-	-	-
67-72	1	0.1	1	0.1	-	-	-	-	-	-	-	-
73-78	1	0.1	1	0.1	-	-	-	-	-	-	-	-
79-84	1	0.1	1	0.1	-	-	-	-	-	-	-	-
85-90	-	-	-	-	-	-	-	-	-	-	-	-
91-96	-	-	-	-	-	-	1	0.4	1	0.4	-	-
97-102	1	0.1	1	0.1	-	-	1	0.4	1	0.4	-	-

24

TABLE 21  
 LENGTH OF STAY SINCE MOST RECENT ADMISSION BY OFFENSE  
 Average (Mean) Length of Stay in Months for Selected Offenses  
 Residents First Released From  
 Wisconsin Adult Correctional Institutions  
 In 1980

OFFENSE	FIRST RELEASES					
	TOTAL/ <sup>a</sup>		FACILITIES FOR MEN/ <sup>b</sup>		FACILITIES FOR WOMEN/ <sup>b</sup>	
	NUMBER	MEAN	NUMBER	MEAN	NUMBER	MEAN
<u>TOTAL</u>	<u>1,305</u>	<u>25.2</u>	<u>1,235</u>	<u>25.4</u>	<u>70</u>	<u>21.4</u>
Murder, First-Degree/ <sup>c</sup>	9	69.6	7	67.4	-	-
Murder, Second-Degree	15	52.0	13	51.9	-	-
Manslaughter	7	22.7	6	23.2	-	-
Homicide	10	16.9	10	16.9	-	-
Robbery, Unarmed	55	26.5	53	26.7	-	-
Robbery, Armed	192	37.8	184	38.2	8	28.1
Battery	63	19.2	58	19.7	5	13.6
Aggravated Battery	6	14.7	6	14.7	-	-
Inj. Cond. Regard. Life	18	28.0	16	28.3	-	-
Burglary, Unarmed	357	23.4	353	23.5	-	-
Burglary, Armed	6	17.3	6	17.3	-	-
Theft (Except Auto)	91	18.9	81	19.2	10	16.2
Rec. Stolen Property	10	20.5	10	20.5	-	-
Auto Theft	79	18.2	77	18.2	-	-
Fraud	15	22.5	9	27.8	6	14.7
Forgery	102	21.2	90	21.7	12	17.4
Iss. Worthless Checks	6	18.7	5	19.4	-	-
Rape	12	44.0	12	44.0	-	-
Sex. Aslt, First-Degree	20	27.3	19	27.3	-	-
Sex. Aslt, 2nd-Degree	31	22.0	31	22.0	-	-
Sex. Aslt, 3rd-Degree	10	18.2	10	18.2	-	-
Narcotic Sales	30	27.6	28	27.8	-	-
Hallucinogenic Sales	8	18.4	8	18.4	-	-
Other Drug Sales	37	19.3	37	19.3	-	-

TABLE 21 (Concluded)

OFFENSE	FIRST RELEASES					
	TOTAL/a		FACILITIES FOR MEN/b		FACILITIES FOR WOMEN/b	
	NUMBER	MEAN	NUMBER	MEAN	NUMBER	MEAN
Concealed Weapons	6	12.0	5	10.6	-	-
Escape	9	28.2	7	29.0	-	-
Arson	18	16.8	18	16.8	-	-
Criminal Damage	7	21.1	7	21.1	-	-
Abandonment	6	9.8	6	9.8	-	-
All Other	16	14.6	14	15.3	-	-
Offenses Not Listed	54	23.7	49	24.6	29	25.7

/a The total number of cases for an offense includes the number of female cases, even if the number of female cases is less than 5. (See note /b)

/b Only those offense categories with 5 or more reported cases are set forth.

/c First-degree murder cases were as follows:

Sex	Number	Sentence	Type of Release
Male	2	Life	Court Discharge
	1	Life	Death
	1	7 Years	Parole
	1	15 Years	Parole
	1	40 Years	Parole
	1	50 Years	Parole
Female	1	Life	Court Discharge
	1	4 yrs., 6 mo.	Parole - MR

TABLE 22  
 LENGTH OF STAY SINCE MOST RECENT ADMISSION BY LENGTH OF SENTENCE  
 Average (Mean) Length of Stay in Months  
 Residents First Released From  
 Wisconsin Adult Correctional Institutions  
 in 1980

LENGTH OF SENTENCE	FIRST RELEASES					
	TOTAL		FACILITIES FOR MEN		FACILITIES FOR WOMEN	
	NUMBER	MEAN	NUMBER	MEAN	NUMBER	MEAN
<u>TOTAL</u>	<u>1,305</u>	<u>25.2</u>	<u>1,235</u>	<u>25.4</u>	<u>70</u>	<u>21.4</u>
1.0 Year, Less Than 1.5	62	8.3	57	8.4	5	7.2
1.5 Year, Less Than 2.0	107	10.7	106	10.6	1	13.0
2.0 Years, Less Than 2.5	235	14.3	220	14.4	15	13.3
2.5 Years, Less Than 3.0	75	16.9	67	16.7	8	17.9
3.0 Years, Less Than 3.5	266	19.6	248	19.7	18	18.7
3.5 Years, Less Than 4.0	19	25.5	18	25.8	1	20.0
4.0 Years, Less Than 4.5	104	25.8	100	26.0	4	22.5
4.5 Years, Less Than 5.0	12	33.2	11	33.0	1	35.0
5 Years, Less than 6	165	28.9	154	29.2	11	24.5
6 Years, Less Than 7	32	37.4	32	37.4	-	-
7 Years, Less Than 8	65	40.5	64	40.7	1	24.0
8 Years, Less Than 9	25	48.7	25	48.7	-	-
9 Years, Less Than 10	13	49.2	13	49.2	-	-
10 Years, Less Than 11	54	51.6	53	52.2	1	21.0
11 Years, Less Than 12	6	70.7	6	70.7	-	-
12 Years, Less Than 13	12	62.1	12	62.1	-	-
13 Years, Less Than 14	2	89.5	2	89.5	-	-
14 Years, Less Than 15	6	63.8	5	64.0	1	63.0
15 Years, Less Than 16	16	66.7	15	67.9	1	48.0
16 Years, Less Than 17	2	68.0	2	68.0	-	-
17 Years, Less Than 18	-	-	-	-	-	-
18 Years, Less Than 19	6	50.2	6	50.2	-	-
19 Years, Less Than 20	-	-	-	-	-	-

TABLE 22 (Concluded)

LENGTH OF SENTENCE	FIRST RELEASES					
	TOTAL		FACILITIES FOR MEN		FACILITIES FOR WOMEN	
	NUMBER	MEAN	NUMBER	MEAN	NUMBER	MEAN
20 Years, Less Than 25	7	69.7	6	68.3	1	78.0
25 Years, Less Than 30	1	96.0	1	96.0	-	-
30 Years, Less Than 35	7	41.9	7	41.9	-	-
35 Years, Less Than 40	-	-	-	-	-	-
40 Years or More	2	124.0	2	124.0	-	-
Life /a	4	53.8	3	32.0	1	119.0

/a See Table 21, Note /c, for type of release.

F/14