

BERKELEY POLICE DEPARTMENT

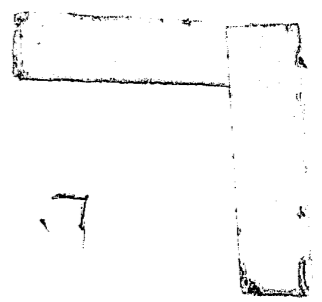
CR sent
11-24-82



CHIEF AUGUST VOLLMER
AND
THE BERKELEY POLICE DEPARTMENT
1910

ANNUAL REPORT 1981

84588



NCJRS

AUG 6 1982

ACQUISITIONS

As a law enforcement officer, my fundamental duty is to serve mankind; to safeguard lives and property; to protect the innocent against deception, the weak against oppression or intimidation, and the peaceful against violence or disorder; and to respect the Constitutional rights of all men to liberty, equality and justice.

I will keep my private life unsullied as an example to all; maintain courageous calm in the face of danger, scorn, or ridicule; develop self-restraint; and be constantly mindful of the welfare of others. Honest in thought and deed in both my personal and official life; I will be exemplary in obeying the laws of the land and the regulations of my department. Whatever I see or hear of a confidential nature or that is confided to me in my official capacity will be kept ever secret unless revelation is necessary in the performance of my duty.

I will never act officiously or permit personal feelings, prejudices, animosities or friendships to influence my decisions. With no compromise for crime and with relentless prosecution of criminals, I will enforce the law courteously and appropriately without fear of favor, malice or ill will, never employing unnecessary force or violence and never accepting gratuities.

I recognize the badge of my office as a symbol of public faith, and I accept it as a public trust to be held so long as I am true to the ethics of the police service. I will constantly strive to achieve these objectives and ideals, dedicating myself before God to my chosen profession. . . law enforcement.

U.S. Department of Justice 84588
National Institute of Justice

This document has been reproduced exactly as received from the person or organization originating it. Points of view or opinions stated in this document are those of the authors and do not necessarily represent the official position or policies of the National Institute of Justice.

Permission to reproduce this copyrighted material has been granted by
Berkeley Police Department

to the National Criminal Justice Reference Service (NCJRS).

Further reproduction outside of the NCJRS system requires permission of the copyright owner.

TO: DANIEL BOGGAN, JR., City Manager
FROM: T. W. JOHNSON, Acting Chief of Police
SUBJECT: ANNUAL REPORT FOR CALENDAR YEAR 1981

I am pleased to submit to you the Police Department Annual Report for calendar year 1981.

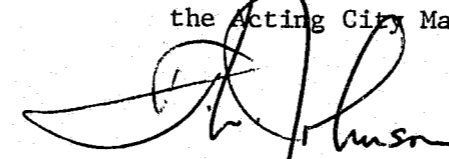
As a result of institutional and management innovations, the Police Department became a more cohesive and efficient organization. Some of the year's highlights which contributed to the Department's performance include:

- Implementation of a Field Training Officer Program in which recruits are trained and evaluated for an 11 week period by experienced and specially trained officers.
- Strengthening of the Reserve Officer Program - which celebrated 40 years of service to the City - by the recruitment of highly qualified officers, the retirement of inactive officers, and the infusion of increased training.
- Fine tuning of the Department's reorganization of 1980, including reallocation of Patrol strength for better coverage during the late night and early morning and modification of the Detective Division's handling of misdemeanor cases.
- Completion of the first full year of the Traffic Safety Program's operation by significantly increasing the Traffic Enforcement Index and favorably impacting on the traffic accident level.
- Enactment and implementation of a false alarm ordinance, resulting in a decrease in the number of false alarms.
- Improved economy by night time closing of the Hall of Justice with installation of a telephone system for citizen entry.
- Reduction of sick time use through the cooperative effort of individual officers and the Berkeley Police Officers Association.

Page 2

- Maintenance of Departmental sworn strength at close to authorized levels through aggressive recruitment of high quality personnel who closely reflect the ethnic profile of the city.

Credit for the Police Department's achievements over the last year must go to all our men and women who have enjoyed the support of the City Council, the Acting City Manager and the Police Review Commission.



T. W. JOHNSON
Acting Chief of Police

TABLE OF CONTENTS

	<u>Page</u>
Law Enforcement Code of Ethics	
Letter of Transmittal	
Table of Contents	
Demographic Facts About Berkeley.....	1
Organizational Chart.....	2
Narrative Reports:	
Office of the Chief/Business Office.....	3
Administrative Division.....	6
Patrol Division.....	9
Service Division.....	12
Detective Division.....	14
	<u>Table</u>
Plant and Equipment.....	1
Activity of Record Bureau.....	2
Expenditures for Fiscal Year 1980 - 1981.....	3
Distribution of All Personnel by Activity.....	4
Sworn Personnel Transactions.....	5
Salary Scale and Distribution of All Personnel.....	6
Education, Age and Experience Distribution of Sworn Personnel.....	7
Summary of Sworn Police Personnel Absences.....	8
Comparison of Overtime in Hours for Sworn Personnel.....	9
Changes in Sworn Police Personnel, Calendar Year 1981.....	10
Personnel Complaints and Personnel Commendations, 1981.....	11
Disposition of Personnel Complaints Received.....	12
Activity of the Identification Bureau.....	13
Activity of Fugitive/Warrant/Telecommunication Bureau.....	14
Motor Vehicle Collisions by Type and Classification.....	15
Age and Sex of Persons Killed by Collision Classification.....	16
Comparison of Traffic Enforcement to Injury and Fatal Collision Causes.....	17
Activity of Pedestrians Killed and Injured.....	18
Motor Vehicle Collision Comparison, 1977-1981.....	19
City of Berkeley Census Tracts.....	20
Major Offenses by Census Tract - 1981.....	21

DEMOGRAPHIC FACTS ABOUT BERKELEY

MUNICIPAL GOVERNMENT: Founded in 1864. Incorporated as a city in 1909. Council-Manager form of government since 1923.

POPULATION: Official figures released by the Bureau of Census indicate a Berkeley population of 103,324.

AREA: Current distribution - 11.4 square miles of land area; .96 square miles of filled tide land and 6.7 square miles of water area.

INDUSTRY: About 310 industrial plants producing a wide variety of products.

EDUCATION: Seventeen primary schools, two junior high schools, one high school with two campus facilities, and one adult school. Total enrollment in the Fall of 1980: approximately 14,000.

One of the world's largest universities, the University of California with over 30,000 enrolled in the fall of 1981, is located in the east central portion of the city. Armstrong College, schools of business and professional law with an enrollment of 350, is located in central Berkeley.

TRANSPORTATION: A metropolitan bus system connects directly and by transfer with several hundred miles of bus lines in adjoining communities and San Francisco. Berkeley is also an integral part of the Bay Area Rapid Transit System, which began East Bay operation in 1972 and extended its service to San Francisco and Daly City in 1974.

RECREATION: Thirty-eight public parks and playgrounds; three swim centers, sixteen school playgrounds; remodeled and enlarged marina; and a modern concrete surfaced fishing pier extending 3,000 feet into San Francisco Bay. Tilden Regional Park, comprising 2,450 acres of recreational area and available to a metropolitan population of more than 1,090,000 persons is located at the eastern Berkeley city limit.

ASSESSED VALUATION: Certified assessed valuation of taxable property for 1980/81: \$443,162,131. This includes both secured and unsecured personal property, but does not include approximately 30% of the incorporated area which is publicly owned by Federal, State and local agencies.

	<u>Table</u>
Crime Clock - 1981.....	22
Per Cent of Major Offenses Cleared by Arrests Compared with Other United States Population Centers.....	23
Major Offense Rate Per 100,000 Population Compared with Other United States Population Centers.....	24
Offenses Known and Arrests, 1979 - 1981.....	25
Major and Other Offenses Known to and Cleared by Police.....	26
Age, Sex and Race of Adults Arrested 18 Years of Age and Over.....	27
Age, Sex and Race of Juveniles Detained.....	28
Adult Criminal Charges and Dispositions.....	29
Dispositions of Juvenile Offenders by Offense.....	30
Residence Data on Persons Arrested by Offense.....	31
Auto Theft and Auto Recoveries.....	32
Value of Property Reported Stolen and Amount Recovered by Kind of Property.....	33
Value of Property Reported Stolen and Amount Recovered by Type of Offense.....	34
Persons Reported Missing.....	35
Suicides and Attempts.....	36
Miscellaneous Police Activities.....	37
Police District and Beat Map.....	38
Berkeley's Chief Police Executives.....	i
Remembering.....	ii
Acknowledgements.....	iii

DEMOGRAPHIC FACTS ABOUT BERKELEY

MUNICIPAL GOVERNMENT: Founded in 1864. Incorporated as a city in 1909. Council-Manager form of government since 1923.

POPULATION: Official figures released by the Bureau of Census indicate a Berkeley population of 103,324.

AREA: Current distribution - 11.4 square miles of land area; .96 square miles of filled tide land and 6.7 square miles of water area.

INDUSTRY: About 310 industrial plants producing a wide variety of products.

EDUCATION: Seventeen primary schools, two junior high schools, one high school with two campus facilities, and one adult school. Total enrollment in the Fall of 1980: approximately 14,000.

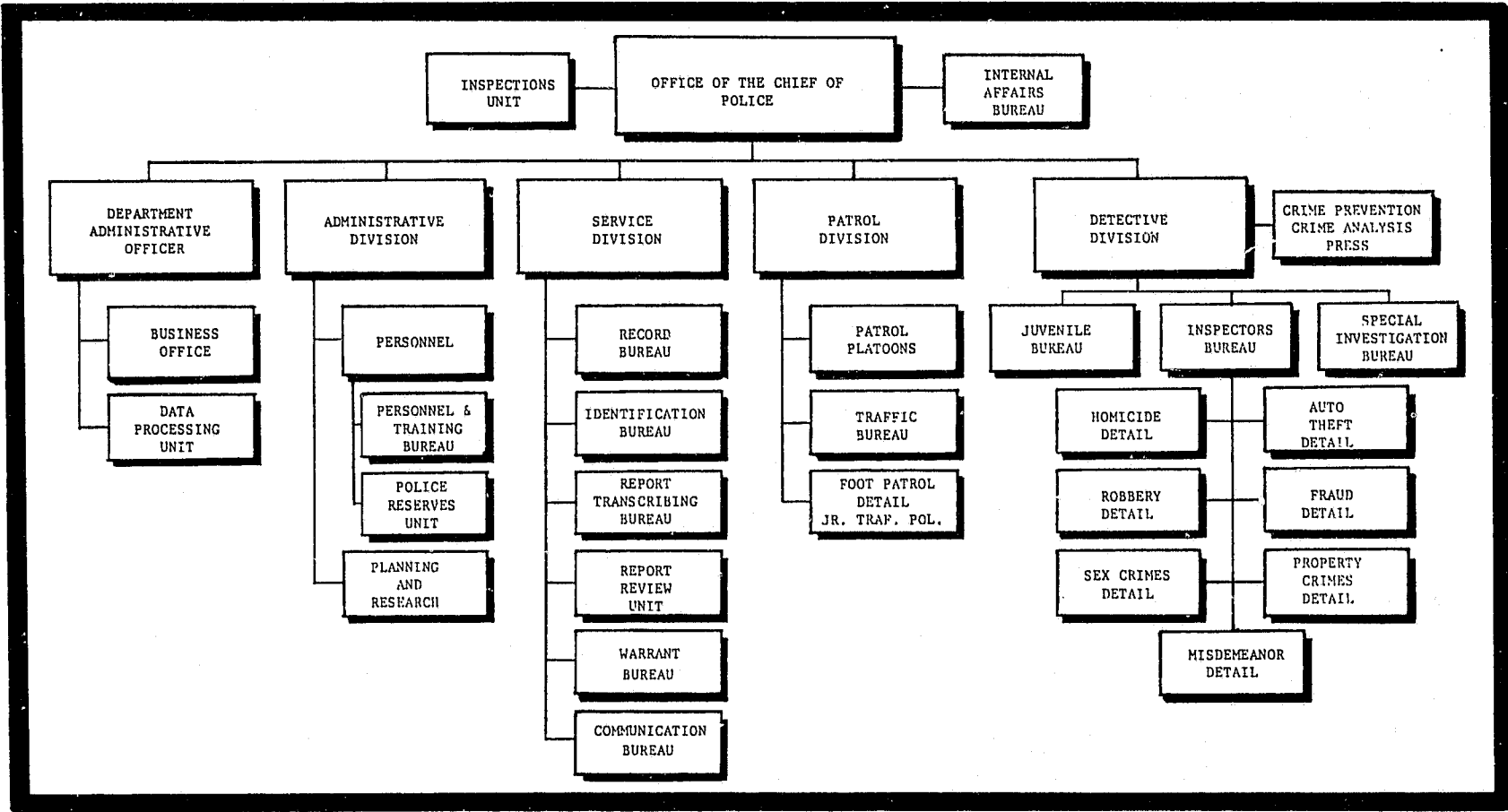
One of the world's largest universities, the University of California with over 30,000 enrolled in the fall of 1981, is located in the east central portion of the city. Armstrong College, schools of business and professional law with an enrollment of 350, is located in central Berkeley.

TRANSPORTATION: A metropolitan bus system connects directly and by transfer with several hundred miles of bus lines in adjoining communities and San Francisco. Berkeley is also an integral part of the Bay Area Rapid Transit System, which began East Bay operation in 1972 and extended its service to San Francisco and Daly City in 1974.

RECREATION: Thirty-eight public parks and playgrounds; three swim centers, sixteen school playgrounds; remodeled and enlarged marina; and a modern concrete surfaced fishing pier extending 3,000 feet into San Francisco Bay. Tilden Regional Park, comprising 2,450 acres of recreational area and available to a metropolitan population of more than 1,090,000 persons is located at the eastern Berkeley city limit.

ASSESSED VALUATION: Certified assessed valuation of taxable property for 1980/81: \$443,162,131. This includes both secured and unsecured personal property, but does not include approximately 30% of the incorporated area which is publicly owned by Federal, State and local agencies.

BERKELEY POLICE DEPARTMENT ORGANIZATIONAL CHART
EFFECTIVE JULY 27, 1980



2

OFFICE OF THE CHIEF



ACTING CHIEF T. W. JOHNSON

Acting Chief of Police Thomas W. Johnson continues at the Department's helm through his second year until a permanent Chief of Police is selected.



LIEUTENANT P. A. MEREDITH

An Inspections Unit, staffed by a Lieutenant, monitors and reviews the operations of the Department's various working units. The Inspections Unit also evaluates and coordinates Departmental programs to better insure effective delivery of services to the community.

The Internal Affairs Bureau, under the supervision of a Police Inspector who reports directly to the Chief of Police, remains an important phase of the Department's effectiveness. The Bureau had contact with over 250 citizens regarding actions by members of the Department. In over one-half of these cases positive communication between the Bureau, the involved employee and the citizen resulted in a satisfactory and informal resolution to the problem. In those cases where a formal complaint was lodged, a thorough investigation proved that most allegations were unfounded. The Bureau also investigates internal Departmental complaints. The Inspector serves as the Department's representative in criminal discovery motions and civil litigations involving officer files. The Bureau also provides assistance to the Police Review Commission in their review of officer actions. In addition Departmental personnel received 195 commendations.

The Business Office is staffed by a Senior Account Clerk, an Intermediate Account Clerk and is supervised by the civilian Departmental Administrative Officer. The Account Clerks receive, audit and disperse monies collected for various purposes by the Department. The office also prepares payroll, along with management reports detailing personnel costs and overtime use. The office retains and indexes accounting records, including vacation, sick, recovery time and overtime. The Business Office coordinates all purchasing for the Department, often researching various items and making recommendations concerning purchases to the requesting unit. The Business Office prepares and administers the Annual Budget for the Department and maintains detailed financial records and provides financial analysis and projections for use in budget planning.

The Key punch Unit is staffed by a Senior Data Entry Operator/Statistician and two Data Entry Operators. The Unit screens and prepares data and indexes information from police reports for processing by the City



computer. The Unit coordinates all Departmental requests for data processing services, including new programs and special runs. The Unit, with the assistance of the Departmental Administrative Officer, is developing new computer programs to meet the Department's data processing needs.

The Departmental statistician evaluates statistics from operating divisions against totals from the computer reports, verifies operational data and prepares monthly and annual reports for distribution throughout the Department and to state and national agencies as required.

ADMINISTRATIVE DIVISION



CAPTAIN M. J. HEALY

The Administrative Division is responsible for virtually all Department functions that are not directly related to criminal investigation and associated record keeping, budgeting and Business Office activities.

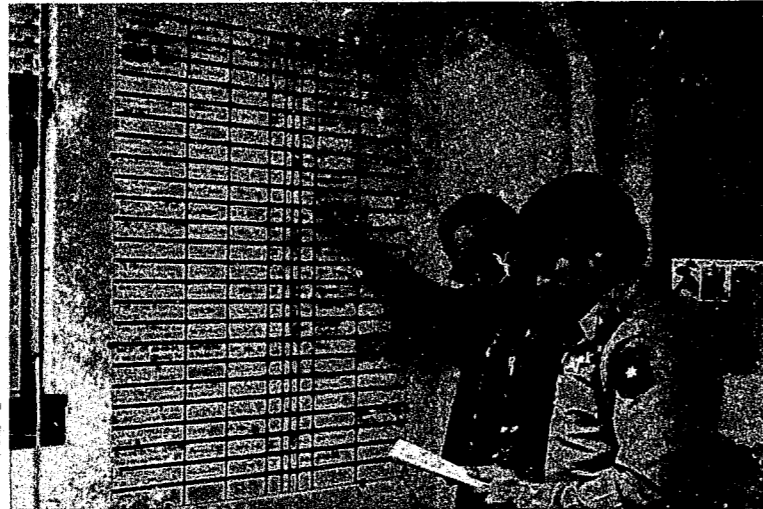


LIEUTENANT D. C. SMITHSON

The Division is commanded by a Captain who is assisted by a Lieutenant. The Lieutenant is in charge of the Personnel and Training Unit, Police Reserve Program and the Police Aide/-Trainee (Cadet) Program. The Captain supervises the Planning and Research Bureau and acts as a staff assistant to the Chief of Police in administrative matters.

The Personnel section of the Personnel and Training Unit has primary responsibility for the recruiting of new police officer candidates and works closely with the City Personnel Department in the subsequent testing process. This section is also responsible for pre-employment background investigations which are conducted prior to final selection of successful candidates. During 1981 a total of twenty-two sworn officers

were hired. The affirmative action goal of establishing ethnic parity in our workforce, both sworn and non-sworn, with the ethnic composition of the City of Berkeley was reached this year. The Personnel section is also responsible for the maintenance of personnel records and employee health and safety. The Training section is responsible for the administrative management of all Department training and maintenance of training records. During 1981 this section administered 17,376 hours of training which was provided to employees.



The Berkeley Police Reserves, celebrating their 40th anniversary, continued to be a viable unit of the Police Department and numbered 74 officers on December 31, 1981. Members provide back-up support to regular patrol officers, direct football traffic, assist in training, respond to a variety of parking violation complaints, and conduct some minor traffic collision investigations. During 1981 Police Reserve Officers contributed 8,973 hours of duty to the City without compensation.

The Police Aide/Trainee (Cadet) Program provides part-time employment to young people, age 17-26 years, who are interested in entering police work but have not yet completed their education. Aides and Trainees provide

clerical and related types of assistance to all Divisions within the Department.

The Planning and Research Bureau functions as an advisory unit to all Divisions and to the Chief of Police. This unit provides information on new techniques and programs of value to the Department, prepares federal and state grant applications, maintains current information on applicable court decisions and legislation and conducts studies as requested by the Chief of Police.



PATROL DIVISION

The Patrol Division is the backbone of the Police Department. Patrol officers provide basic and emergency police service 24 hours a day. The Patrol Division has initial responsibility for crime prevention and investigation, as well as to



**CAPTAIN
W. E. JENKINS**

assist citizens with a variety of non-criminal problems. Specific functions of the Patrol Division include: continuous and visible patrol of commercial and residential areas; completion of the initial investigation of all criminal reports; identification and arrest of suspected offenders; enforcement of traffic laws and investigation of traffic accidents; and quick response to emergency and non-emergency calls for service. Division personnel

deserve credit for handling an increased case load while improving an already excellent response time.

The Patrol Division, commanded by a Captain with the assistance of three Lieutenants, is composed of five platoons (two of which overlap the three basic shifts), a Traffic Bureau and a Foot Patrol Detail.

The Traffic Bureau completed its first full year under a Selective Traffic Enforcement Program grant. The addition of four traffic officers has resulted in an improvement in the Traffic Enforcement Index from 10.5 to 20.4. Traffic collisions in the City have been reduced 8%. The Traffic Bureau is also responsible for traffic analysis and traffic collision report review, police fleet operation, and coordination with the City Traffic Engineer.

The Junior Traffic Police and Adult Crossing Guard Program is a unit within the Traffic Bureau. The Program has the responsibility of ensuring



**LIEUTENANT
P. E. DORAN**



**LIEUTENANT
T. J. HALEY**



**LIEUTENANT
J. G. POLK**



safe street crossing at all elementary schools in the city.

The Foot Patrol Detail is comprised of twelve officers and a supervising Sergeant. Foot Patrol Officers are assigned to several business districts, including Telegraph Avenue (jointly with the University of California Police), Sacramento Street and Shattuck Avenue. The Foot Patrol Officers' presence in these areas help to suppress crime and reduce neighborhood nuisances.

Foot Patrol Officers are also available for special activities that occur throughout the city. During the year Foot Patrol Officers were used in combating illicit drug traffic in the Sacramento Street and Telegraph Avenue areas. Foot Patrol Officers who received special training in drug abuse and trafficking, have been used for undercover and surveillance assignments.

A Barricaded Subject/Hostage Negotiation Team was formed in 1976. Team members receive extensive and specialized training for dealing with potentially violent situations. During the year the Team responded to two such incidents. One situation involved an armed suspect who was barricaded in his sister's house and threatened to shoot neighbors. A second situation involved armed robbery suspects who took a hostage and then barricaded themselves inside a restaurant. The Team was able to successfully resolve both situations with only a minor injury to one of the suspects.

The Patrol Division developed and implemented a Field Training Officer Program. Field Training officers were carefully selected and individually received 50 hours of formal FTO training. During the year FTO's trained 23 recruit officers, each of whom received



over 430 hours of instruction and evaluation. The Program has proven to be extremely successful in producing patrol officers ready to meet the rigors of solo beat patrol.



SERVICE DIVISION



CAPTAIN D. T. HICKMAN

The Service Division is commanded by a Captain who is assisted by a Lieutenant and provides support functions necessary to operate the Police Department. The Division is divided into five Bureaus: Records Bureau, Identification Bureau, Warrant-Fugitive Bureau, Report Transcribing Bureau and Communications Bureau. The Division is also responsible for jail operation and prisoner custody; control and custody of physical evidence, property and police supplies; and informational service to the public.



LIEUTENANT R. J. PETERS

The Records Bureau processed approximately 70,000 police reports in 1981. Report processing includes transcription, duplication, routing, review and report security. This year an Automated Report Storage and Retrieval System, the Oracle, came on line.

The Identification Bureau provides technical crime scene investigation for all major crimes. During the year the Identification Bureau conduc-

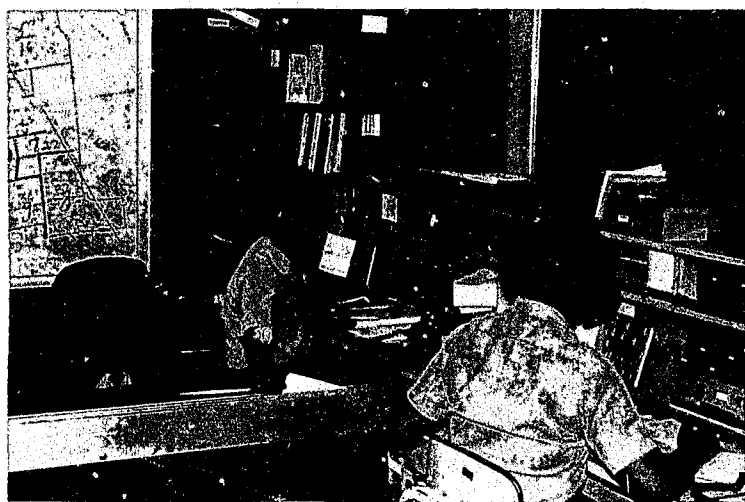


ted over 3,500 crime scene latent fingerprint investigations, leading to over 32,000 fingerprint comparisons which resulted in the positive identification of 140 persons responsible for crimes. The Department also participated in the State of California's Automated Latent Print System (ALPS). Identification Bureau personnel also provided expert court testimony on matters of physical evidence.

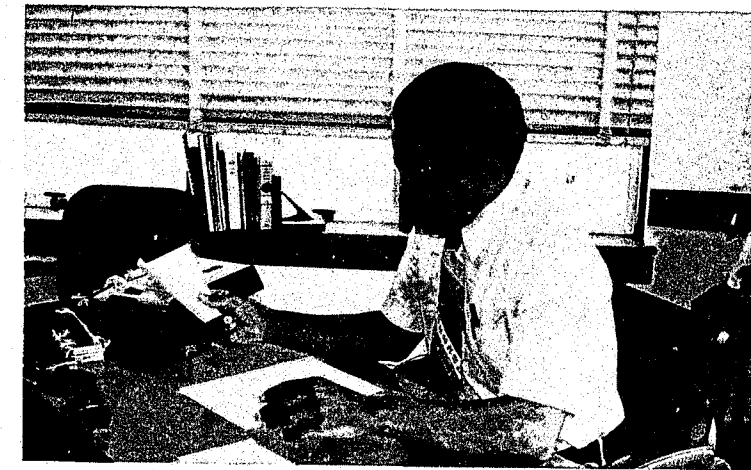
The Fugitive-Warrant Bureau processed over 14,000 local felony, misdemeanor and traffic warrants during the year. In addition over 4,700 warrants were received from outside agencies for service on persons reported as residing in Berkeley.

An adjunct to this Bureau is the Telecommunication Center that processed over 18,000 teletype messages during the year. The Center also handled in excess of 69,000 messages and inquiries involving the Police Information Network (PIN), Stolen Vehicle System (SVS) and the National Crime Information Center (NCIC) communication system.

The Communications Bureau is the nerve center of the Department, receiving incoming calls and dispatching personnel to police emergencies, crime reports, and other police services. The Bureau has an authorized strength of 23 persons, both sworn and non-sworn. The Bureau also administers the Alarm Ordinance, which at the end of the year resulted in a decrease in the number of false alarms.



DETECTIVE DIVISION



CAPTAIN B. J. MILLER

The Detective Division, commanded by a Captain with the assistance of a Lieutenant of Inspectors, is comprised of the Inspectors Bureau, the Juvenile Bureau, and the Special Investigations Bureau, along with the Crime Prevention Detail and the Press Officer. The Detective Division is responsible for assisting, advising and coordinating the investigative efforts of the Patrol Division and completing all follow-up investigations of reported criminal offenses.

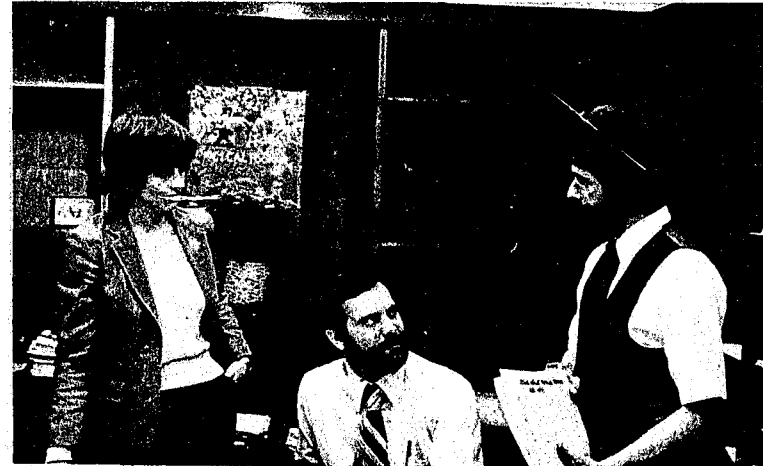
The Inspectors Bureau is the hub of the Detective Division and consists of 7 Details: the Homicide Detail, responsible for homicides, suicides and other reported suspicious deaths, adult missing persons, criminal intelligence, escapes, and felony assaults; the Robbery Detail, responsible for robbery, bank robbery, bribery, extortion, gun sales, hijacking, kidnapping (without sexual involvement), purse snatch and illegal weapons investigation; the Sex Crimes Detail, responsible for sex crimes (felony and



misdemeanor), kidnapping (with sexual involvement), rape (forcible and statutory) and sex registrants; the Auto Theft Detail, responsible for vehicle theft and recovery, permits for used car or wrecking businesses, and inspections of these premises; the Fraud Detail, responsible for bunco, counterfeiting, credit card violations, embezzlement, forgery, worthless checks and the Chamber of Commerce Merchants Warning Bulletin; the Property Crimes Detail, responsible for burglary, grand theft (except auto and bunco), stolen property, arson, bombs and explosives, public auctions and secondhand stores, and assistance and relief to other Detective Division Details; and the Misdemeanor Crimes Detail, responsible for all misdemeanor crimes.

The Inspectors Bureau is noted for its innovative and interjurisdictional investigative abilities. Of special note during 1981 was the investigation of the "Shiva" bombings which resulted in the suspect's arrest. This case, which involved the bombing of two banks and a telephone company office, was headed and coordinated by the Inspectors Bureau and involved local, state and federal law enforcement agencies.

The Sex Crimes Detail is known for its advanced investigative techniques, including extensive forensic analysis. More importantly, the Sex Crimes Detail provides support for sexual assault victims from the time of the offense through the prosecution of the offender. This method of investigation not only leads to the successful conviction and imprisonment of numerous multiple-offense rapists, but also resulted in numerous commendations as reflected in the following letter to the Berkeley Gazette:



"I have just come from a four-hour intensive meeting with Inspector Larry Lindenau of the Berkeley Police Department. The meeting concludes what for both of us has been a four-year ordeal in a rape case. Needless to say we are greatly relieved for several reasons, one that the man is in prison for 17 years and that justice has been done and that other lives will be spared.

"I cannot express my warm and loving sentiments to this man, Mr. Lindenau, for being a source of strength

"a confidant and good friend during these four not altogether pleasant years. So Larry, I have to say it in print and you know who I am.

"Your eternally grateful friend - Thanks and God bless you."

The Crime Prevention Detail is the Department's liaison to neighborhood groups. The two officer Detail addresses numerous community meetings and also conducts commercial and residential crime prevention inspections. The Press Officer maintains liaison with and provides information to the news media regarding all areas of the Police Department. During the year many positive reports and features about the Department and its members have been published and broadcast. The Press Officer is also responsible for the Department's Crime Analysis Bulletin.

The Special Investigations Bureau is responsible for investigations involving illicit drug activity, prostitution, gambling and liquor laws. Special attention has been given to the drug problems in the Telegraph Avenue and Sacramento Street areas. As a result of several drug buy programs instituted in the fall of this year, over 42 drug dealers have been arrested for the sales of various narcotics. At present over one-half of these drug dealers have pled guilty with the remainder awaiting trial. Those convicted have received sentences ranging from probation to state prison. Continued attention has been given to street prostitutes along lower University Avenue, as well as other parts of Berkeley, to insure that this does not become a problem again.

<u>YEAR</u>	<u>PERSONS ARRESTED FOR SOLICITING</u>	<u>OFFENSES CHARGED</u>
1977	400	616
1978	60	114
1979	71	123
1980	44	75
1981	39	66

VOLUME OF NARCOTICS AND DANGEROUS DRUGS SEIZED
1977 THROUGH 1981

<u>Year</u>	<u>Heroin Grams</u>	<u>Cocaine Grams</u>	<u>Mari- juana Pounds</u>	<u>Hash- ish Grams</u>	<u>LSD Units</u>	<u>Dangerous Drugs Units</u>
1977	393.30	2,064.00	32.44	239.00	1,445.00	1,192.00
1978	4,480.00	157.00	29.18	519.00	80,173.00	258.00
1979	491.40	414.50	249.18	816.00	29,729.00	497.00
1980	132.80	466.70	439.09	16,483.25	133,738.00	3,009.00
1981	529.45	559.85	38.61	1,487.90	105,488.00	536.00

The Juvenile Bureau is responsible for the review, evaluation and Departmental disposition of all juvenile offenders; innovation, planning and implementing delinquency prevention programs; liaison and coordination with other agencies involved in the juvenile justice process; counselling and supervision of youthful offenders; providing assistance to and cooperation with other organizations working in behalf of youth; the follow-up investigation involving crimes of child abuse, neglect, abandonment and stealing; juvenile missing persons; and service of juvenile court warrants. Diversion of juveniles from the Criminal Justice System continues to be a high priority of the Bureau. Bureau personnel attended courses in child abuse and sexual exploitation of children, juvenile law enforcement officer training, and juvenile justice update training.



STATISTICS

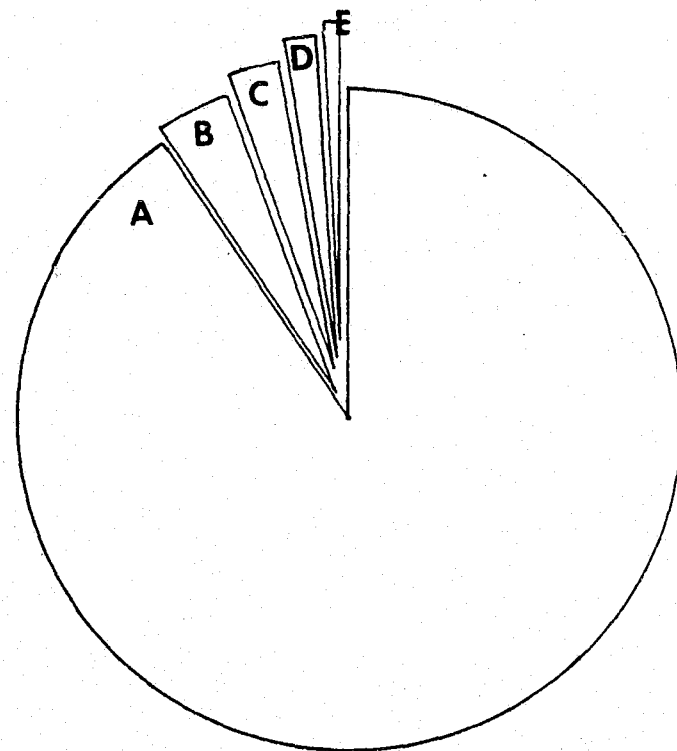
TABLE 1
PLANT AND EQUIPMENT

VEHICLES	
Service.....	4
Prisoner van, radio equipped.....	1
ID Vehicle/Warrant Bureau.....	3
Patrol.....	35
Beat Patrol/Pool.....	30
Foot Patrol/Police Reserve.....	2
Traffic Bureau, radar equipped.....	3
Detective.....	15
Administrative.....	6
	TOTAL 60
OTHER EQUIPMENT	
Portable radios, transistor type.....	81
Silent Alarms to Communications Center.....	181
Police call boxes.....	28
HALL OF JUSTICE EQUIPMENT	
Police Radio Station KSL 359 operates on 460.175 M.C. duplex; custom built Communications Center, 12 channel capacity, 6 positions, 90 watt rating, effective radiated power 350 watts, range: Station to Car-35 miles, Car to Car-6 miles, Car to Station-20 miles.	

TABLE 2
ACTIVITY OF RECORD BUREAU

RECORDS	1979	1980	1981
Reports Processed and Filed	72,400	69,552	69,884
JAIL			
Berkeley Arrests	4,955	4,829	5,557
Outside Agency Arrests	540	567	824
TOTAL JAIL COUNT	5,495	5,396	6,381

TABLE 3
EXPENDITURES FOR FISCAL YEAR 1980-81



Category	Description	Amount	Percentage
A	PERSONNEL (SALARY & FRINGE)	\$7,683,101	90.87%
B	TRANSPORTATION	455,700	5.39%
C	MATERIAL, SUPPLIES, SERVICES ADDITIONS AND BETTERMENTS	185,300	2.19%
D	SPECIAL SERVICES	102,200	1.21%
E	REPAIRS AND MAINTENANCE	29,000	.34%
TOTAL 1980-1981 BUDGET: \$8,455,301*			

*Previous budget totals did not include fringe benefits

TABLE 4
DISTRIBUTION OF ALL PERSONNEL BY ACTIVITY*

ACTIVITY DESIGNATION	1978		1979		1980		1981	
	Authorized	Actual	Authorized	Actual	Authorized	Actual	Authorized	Actual
Chief of Police	1	1	1	1	1	0	1	0
Office of the Chief	4	4	4	4	3	3	3	3
Administration	9	12	7	10	8	6	7	7
Personnel and Training	6	6	5	5	7	16	7	11
Police Reserves	2	2	2	1	2	2	2	2
Trainees/Aides	7.5	5.5	7.5	6	7.5	6	7.5	5
Inspectors Bureau	24	26	20	20	26	26	26	26
Juvenile Bureau	6	6	6	6	9	6	9	7
Special Investigations Bur.	4	4	4	3	4	4	4	4
Patrol Platoons	105	99	107	97	95	86	88	85
Traffic Bureau	4	3	3	3	7	7	6	6
Foot Patrol Detail	8	8	8	8	8	6	14	12
Warrant Bureau	7	4	7	5	5	5	5	5
Record Bureau	31	27.5	30	30	25	25	26	26
Communications Bureau	29	27	24	23	23	23	23	23
Report Transcribing Bureau	5.5	4	5.5	4	5	5	4	3
Identification Bureau	4	4	4	4	3	3	3	3
PERSONNEL TOTAL	257	243	245	230	238.5	229	235.5	226

TABLE 5
SWORN POLICE PERSONNEL TRANSACTIONS

	1978	1979	1980	1981
APPOINTED/REINSTATED	17	3	17	24
RESIGNED/DISMISSED	9	10	17	20
RETIRED	3	5	3	1
DIED	0	0	0	0
ON EXTENDED MILITARY LEAVE	0	0	0	0
ON LEAVE OF ABSENCE	0	0	0	2
ON PENSION	74	77	80	80

*Effective 12-31-81

TABLE 6
SALARY SCALE AND DISTRIBUTION OF ALL PERSONNEL (EFFECTIVE 12-21-81)

TITLE	Authorized Strength	MONTHLY SALARY	ADMINISTRATIVE				DETECTIVE			PATROL			SERVICE				
			Office of Chief	Admin- stration	Personnel & Training	Police Reserves	Inspectors Bureau	Juvenile Bureau	Special In- vestigation	Patrol Platoons	Traffic Bureau	Foot Patrol	Record Bureau	Identifi- cation	Warrant Bureau	Report Transcrib.	Communica- tions
CHIEF OF POLICE	1	3347-4637	1														
CAPTAIN	4	3186-3510		1			1		1			1					
LIEUTENANT	7	2819-3109		1	1		1		3			1					
INSPECTOR	9	2496-2751					7	1						1			
DIRECTOR-IAB	1	2496-2751	1														
DIRECTOR-SIB	1	2378-2618							1								
SERGEANT	21	2378-2618			1	1			12	1	1	1					4
DIRECTOR-JR. TRAF.	1	2378-2618															
PATROL OFFICER	125	1860-2378	1	1	1		15	6	3	71	5	12	2	1	2		5
ASST. PATROL OFF.	1	1392-1774						1									
DEPT. ADMIN OFF.	1	2265-2734	1														
ADMIN. SECRETARY	1	1463-1752	1														
SUPERVIS. CLERK II	1	1596-1733											1				
SENIOR CLERK	1	1436-1563														1	
SR. ACCOUNT CLERK	1	1436-1563	1														
POLICE SERV ASST.	30	1450-1570											15		1		14
SENIOR STENO CLERK	1	1436-1563		1													
INTER STENO CLERK	2	1298-1407	1				1										
DATA ENTRY OPER.	2	1298-1407		2													
INTER ACCT CLERK	1	1298-1407	1														
INTER TYPIST CLERK	16	1245-1350			1	1	2	1		1			7			3	
TRAINEE/AIDE	7.5	4.55-6.57 (hourly)			7.5												
TOTAL	235.5		8	6	11.5	2	27	9	4	88	7	13	28	1	4	4	23

TABLE 7

EDUCATION, AGE & EXPERIENCE DISTRIBUTION OF PERSONNEL

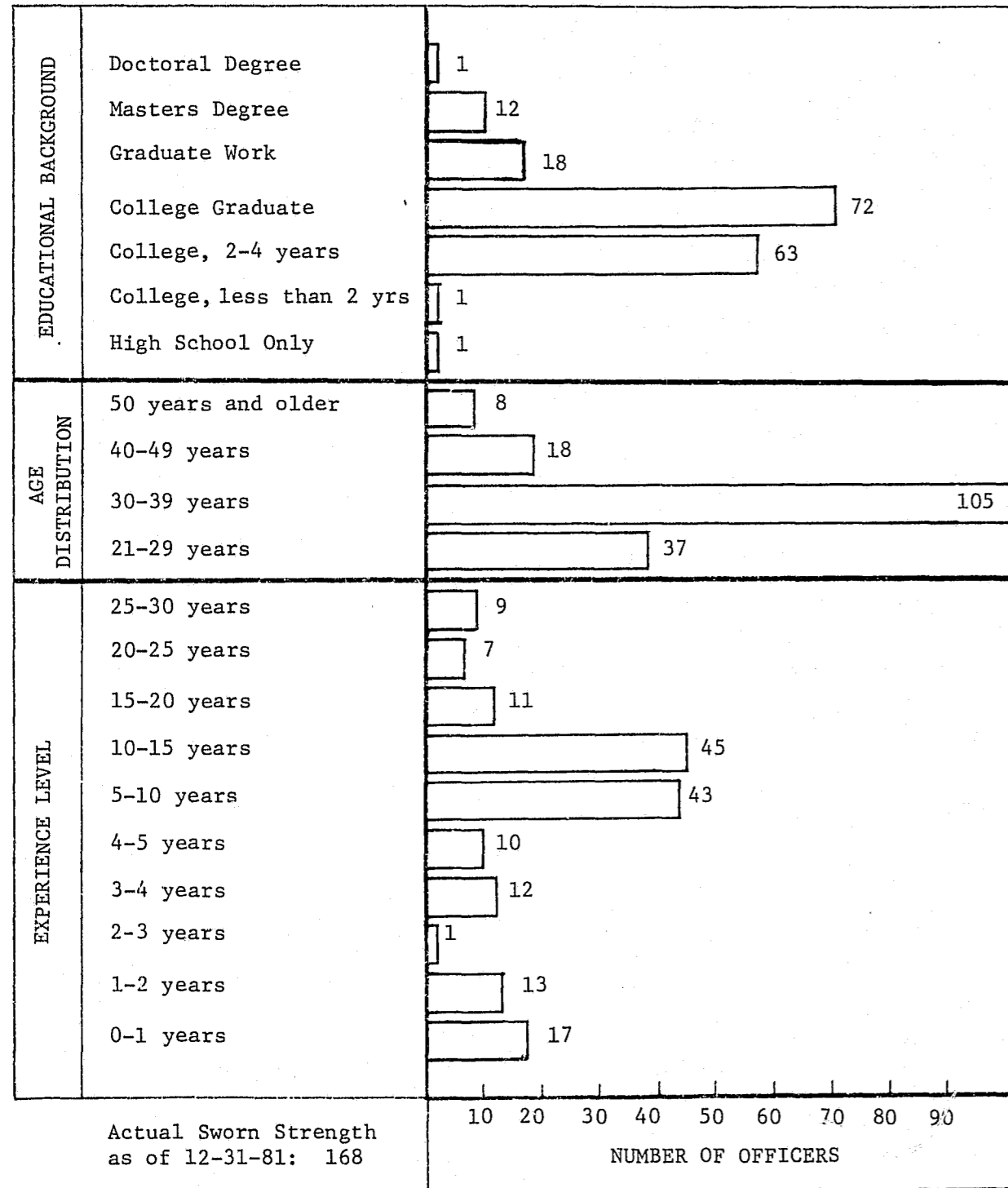


TABLE 8

SUMMARY OF SWORN PERSONNEL ABSENCES

REASON FOR ABSENCE	NUMBER OF DAYS		
	1979	1980	1981
REGULAR DAYS OFF	19,628	17,289	17,680
VACATION DAYS	2,307	2,491	2,170
HOLIDAY	1,032	1,014	1,182
ILLNESS	1,061	1,633	1,235
INJURED IN LINE OF DUTY	1,055	625	357
DEATH IN FAMILY	52	33	43
LEAVES OF ABSENCE	334	730	3,314
ABSENT WITHOUT LEAVE	1	44	0
MILITARY LEAVES OF ABSENCE	95	42	58
SUSPENSION	34	17	60
COMPENSATORY OVERTIME RECOVERED	1,211	477	831

TABLE 9

COMPARISON OF OVERTIME IN HOURS FOR SWORN PERSONNEL

YEAR	Paid Overtime (Holidays Not Included)	Compensatory Overtime Accrued	Average Amount Compensatory Hours Accrued Per Officer	Compensatory Overtime Recovered (Does not In- clude Payoffs)	Remaining Accumulated Compensatory Overtime
1981	20,457.9	8,774.5	47.7	6,650.15	4,346.3
1980	29,191.3	4,070.9	25.1	6,816.8	3,008.2
1979	21,460.8	5,445.8	33.4	9,691.4	13,084.3
1978	19,511.0	15,029.8	83.9	17,277.3	17,329.9
1977	23,595.0	18,277.6	104.4	15,517.1	20,297.0

TABLE 10
CHANGES IN SWORN POLICE PERSONNEL
CALENDAR YEAR 1981

PERSONNEL STRENGTH	
NUMBER OF AUTHORIZED PERSONNEL, JANUARY 1, 1981	168
NUMBER OF AUTHORIZED PERSONNEL, DECEMBER 31, 1981	171
NUMBER OF ACTUAL PERSONNEL, JANUARY 1, 1981	162
NUMBER OF ACTUAL PERSONNEL, DECEMBER 31, 1981	168
PERSONNEL ADDITIONS	
APPOINTED DURING YEAR	21
REINSTATED DURING YEAR	2
RETURNED FROM MILITARY LEAVE	0
RETURNED FROM LEAVES OF ABSENCE	0
TOTAL ADDITIONS	23
PERSONNEL SEPARATIONS	
VOLUNTARY RESIGNATION	10
RETIREMENT ON PENSION	1
RESIGNED WITH CHARGES PENDING	0
RESIGNED IN LIEU OF DISMISSAL	0
RESIGNED, FAILED RECRUIT PROBATION	1
DISMISSED FOR CAUSE	2
KILLED IN LINE OF DUTY	0
DECEASED	0
LEAVES OF ABSENCE	2
MILITARY LEAVES OF ABSENCE	0
FROM FULL TIME TO ONE-HALF TIME	1
TOTAL SEPARATIONS	17

TABLE 11
PERSONNEL COMPLAINTS AND COMMENDATIONS - 1981

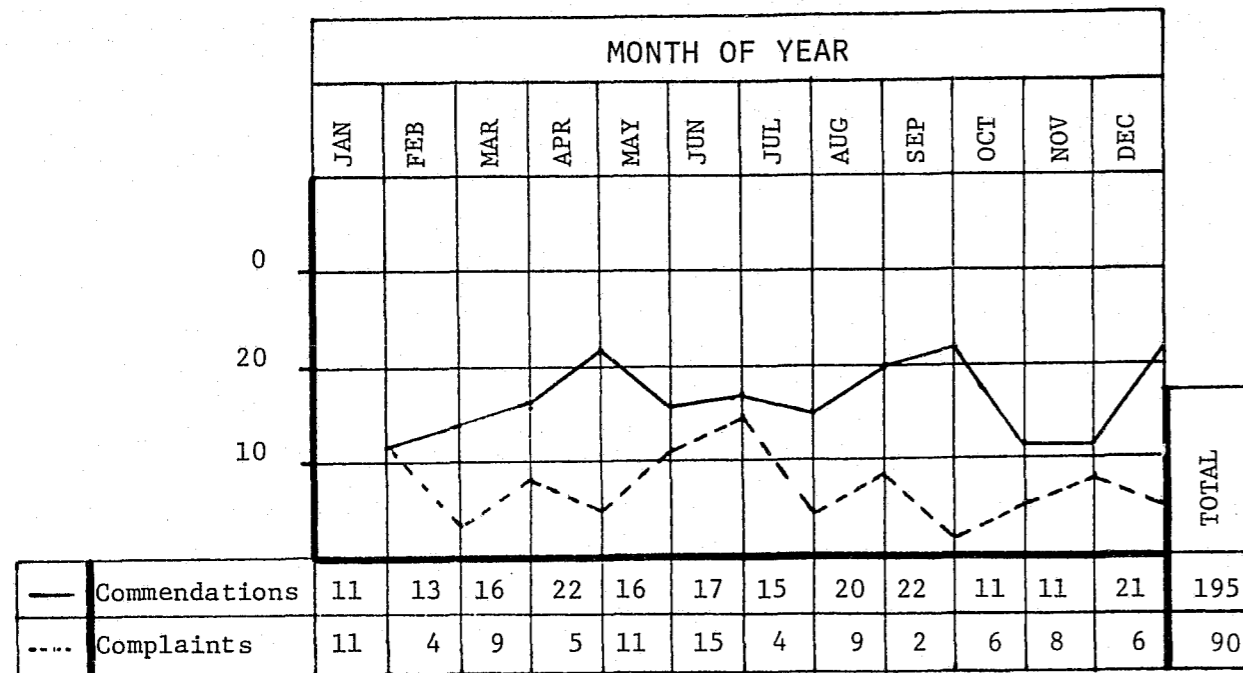


TABLE 12
DISPOSITION OF PERSONNEL COMPLAINTS RECEIVED

	1980	1981
EXTERNAL PERSONNEL COMPLAINTS RECEIVED*	131	154
ALLEGATIONS INVESTIGATED**	247	251
ALLEGATIONS UNFOUNDED (DID NOT OCCUR)	83	116
ALLEGATIONS NOT SUSTAINED (NOT PROVEN BY INVEST.)	127	88
ALLEGATIONS SUSTAINED - OFFICER'S ACTION'S JUSTIFIED	6	13
ALLEGATIONS SUSTAINED - ADDITIONAL TRAINING GIVEN	28	31
ALLEGATIONS SUSTAINED - EMPLOYEE REPRIMANDED	2	2
ALLEGATIONS SUSTAINED - EMPLOYEE SUSPENDED	1	1
ALLEGATIONS SUSTAINED - EMPLOYEE TERMINATED	0	0
COMPLAINTS PENDING AT YEAR END	20	26
COMPLAINTS WITHDRAWN	6	6
PERSONNEL COMMENDATIONS FOR YEAR	208	195

*Include PRC complaints (64).
**Some complaints contain more than one allegation.

TABLE 13
ACTIVITY OF THE IDENTIFICATION BUREAU

CRIMINAL FINGERPRINTS

FINGERPRINTS ON FILE	1980	1981
On File - Beginning of Year	101,218	102,526
Filed During Year	1,308	1,807
Overage/Cancelled/Cards Removed	0	0
On File - End of Year	102,526	104,333
IDENTIFICATIONS MADE		
Cases Made by Fingerprints Left at Scenes	150	140
LATENT FINGERPRINT INVESTIGATIONS		
Investigations Made	3,660	3,537
Hours Expended in Above Investigations	2,365	2,160
Comparisons Made	34,000	32,000
Hours Consumed in Above Comparisons	240	230

PHOTOGRAPHIC WORK

PHOTOGRAPHS FOR INVESTIGATIVE PURPOSES	1980	1981
Assignments on Persons Wanted	90	82
Assignments at Scenes/of Evidence	768	720
Total Number of Photo Assignments	858	802

MISCELLANEOUS PUBLIC SERVICE

	1980	1981
Passport Letters	350	525
Fingerprint Cards Processed for Applicants	890	1,075

TABLE 14
ACTIVITY FUGITIVE/WARRANT/TELECOMMUNICATION BUREAU

FUGITIVE DETAIL - FELONY WARRANT RECEIVED/SERVED

LOCAL - BAMC FELONY WARRANTS	1980	1981
ON HAND BEGINNING OF YEAR	59	46
RECEIVED/ASSIGNED/PROCESSED DURING YEAR	106	113
SERVED DURING YEAR	93	91
OTHER DISPOSITION DURING YEAR	26	27
ON HAND END OF YEAR	46	41
OUTSIDE - FELONY WARRANTS		
ON HAND BEGINNING OF YEAR	11	30
RECEIVED FROM OUTSIDE AGENCIES DURING YEAR	464	521
SERVED DURING YEAR	253	311
RETURNED UNSERVED/RECALLED DURING YEAR	192	220
ON HAND END OF YEAR	30	20
SUBTOTAL FELONY WARRANTS PROCESSED	570	634

WARRANT BUREAU - MISDEMEANOR AND TRAFFIC WARRANTS RECEIVED/SERVED

LOCAL - BAMC MISDEMEANOR AND TRAFFIC	1980	1981
ON HAND BEGINNING OF YEAR	14,885	19,280
RECEIVED/ASSIGNED/PROCESSED DURING YEAR	14,158	14,746
SERVED DURING YEAR	4,829	5,488
OTHER DISPOSITION DURING YEAR	4,934	9,280
ON HAND END OF YEAR	19,280	19,258
OUTSIDE - MISDEMEANOR AND TRAFFIC		
ON HAND BEGINNING OF YEAR	127	66
RECEIVED FROM OUTSIDE AGENCIES DURING YEAR	4,204	3,969
SERVED DURING YEAR	3,197	3,121
RETURNED UNSERVED/RECALLED DURING YEAR	1,068	860
ON HAND END OF YEAR	66	54
SUBTOTAL-MISDEMEANOR & TRAFFIC WARRANTS PROCESSED	18,362	18,715
TOTAL ALL WARRANTS PROCESSED	18,932	19,349

TELECOMMUNICATIONS CENTER

	1980	1981*
TELETYPES RECEIVED/SENT	23,803	18,357
RADIO AND PHONE INQUIRIES LOGGED	83,916	69,042

*Lower figures reflect loss of two teletype machines

TABLE 15
MOTOR VEHICLE COLLISIONS BY TYPE
AND CLASSIFICATION

TABLE 16
AGE AND SEX OF PERSONS KILLED BY
COLLISION CLASSIFICATION

MOTOR VEHICLE INVOLVED WITH:	NUMBER OF COLLISIONS			FATAL COLLISIONS																
	PROPERTY DAMAGE OR NON-INJURY	INJURY	FATAL	AGE OF PERSON KILLED											SEX					
				0 to 4	5 to 10	11 to 14	15 to 19	20 to 24	25 to 34	35 to 44	45 to 54	55 to 64	65 to 74	75 AND OVER	TOTAL ALL AGES	MALE	FEMALE			
NON-COLLISION	8	23	0																	
PEDESTRIAN	3	129	2	1						1								2	2	
OTHER VEHICLE	1,339	642	1							1								1	1	
VEHICLE ON OTHER ROADWAY	21	18	0																	
PARKED VEHICLE	603	58	1														1	1		
TRAIN	2	0	0																	
BICYCLE	18	152	0																	
ANIMAL	10	2	0																	
FIXED OBJECT	168	61	2							1	1						1	3	3	
OTHER OBJECT	17	7	0																	
OTHER	28	26	0																	
NOT CODED	576	25	0																	
TOTAL	2,793	1,143	6	1						3	1						2	7	5	2

TABLE 17
COMPARISON OF TRAFFIC ENFORCEMENT TO INJURY AND COLLISION CAUSES

VIOLATION/CAUSE OF COLLISION	CITATIONS ISSUED		TYPES OF COLLISION			
	NUMBER	% OF TOTAL	NON-INJURY	INJURY AND FATAL	TOTAL	% OF TOTAL
SPEEDING	10,381	39.8	344	214	558	14.2
TRAFFIC LIGHTS	1,856	7.1	83	66	149	3.8
STOP SIGNS	2,101	8.1	55	44	99	2.5
IMPROPER TURNS	6,193	23.7	633	125	758	19.3
IMPROPER PASSING	58	.2	46	15	61	1.6
WRONG SIDE OF STREET	141	.5	24	10	34	.9
VIOLATION PEDESTRIAN RIGHT OF WAY	136	.5	3	47	50	1.3
IMPROPER SIGNAL	45	.2	-	-	-	-
VISION OBSCURED	42	.2	2	1	3	.1
RECKLESS DRIVING	31	.1	5	1	6	.2
CUTTING IN	91	.3	12	2	14	.4
FOLLOWING TOO CLOSELY	36	.1	144	70	214	5.4
DEFECTIVE BRAKES	1	.0	17	11	28	.7
DEFECTIVE LIGHTS	589	2.3	-	5	5	.1
OTHER IMPROPER DRIVING	3,908	15.0	742	115	857	21.8
DRUNK DRIVING	-	-	112	62	174	4.4
VIOLATION BY PEDESTRIAN AT INTERSECTION	41	.2	2	23	25	.6
VIOLATION BY PEDESTRIAN NOT AT INTERSECTION	15	.1	-	28	28	.7
VIOLATION AUTO RIGHT OF WAY	262	1.0	450	267	717	18.2
MECHANICAL	167	.6	23	9	32	.8
OTHER - NOT DRIVING	-	-	85	32	117	3.0
TOTAL	26,094	100.0	2,782	1,147	3,929	100.0

TABLE 18
ACTIVITY OF PEDESTRIANS KILLED OR INJURED

ACTIVITY	FATAL	INJURED	TOTAL
IN CROSSWALK - AT INTERSECTION	2	80	82
IN CROSSWALK - NOT AT INTERSECTION	0	1	1
CROSSING - NOT IN CROSSWALK	0	34	34
IN ROAD - INCLUDES SHOULDER	0	20	20
NOT IN ROAD	1	12	13
APPROACHING/LEAVING SCHOOL BUS	0	0	0
TOTAL	3	147	150

TABLE 19
MOTOR VEHICLE COLLISION COMPARISON

	TOTAL ALL COLLISIONS	FATALITY COLLISIONS	INJURY COLLISIONS	PROPERTY DAMAGE ONLY COLLISIONS	PERSONS KILLED	PERSONS INJURED
1977	4242	6	1193	3043	7	1604
1978	4703	5	1212	3486	5	1664
1979	4420	6	1176	3244	6	1569
1980	4256	5	1157	3094	5	1514
1981	3942	6	1143	2793	7	1524
% CHANGE	-7.4	+20.0	-1.3	-9.8	+40.0	+7

TABLE 20
CITY OF BERKELEY CENSUS TRACTS

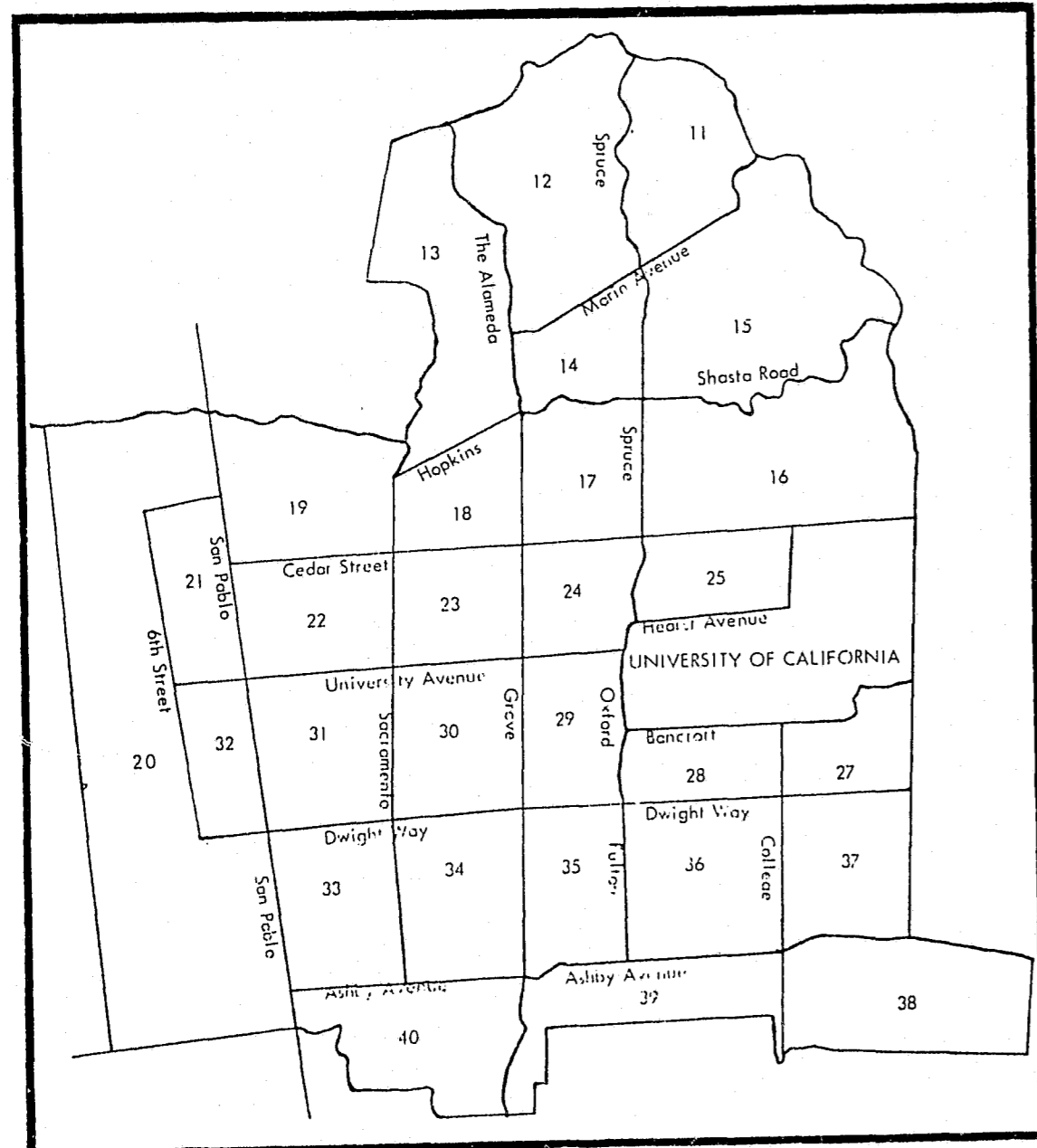


TABLE 21
MAJOR OFFENSE BY CENSUS TRACT
1981

TRACT	HOMICIDE	RAPE	ROBBERY	AGGRAVATED ASSAULT	BURGLARY	LARCENY	AUTO THEFT	TOTAL	% OF TOTAL
11	0	0	0	1	37	57	10	105	.70
12	0	0	5	2	75	105	6	193	1.30
13	1	1	13	2	64	122	23	226	1.52
14	0	0	1	2	38	72	9	122	.82
15	0	1	1	1	88	105	12	208	1.40
16	0	1	1	0	139	138	18	297	2.00
17	1	1	12	4	99	220	20	357	2.40
18	0	2	9	4	45	78	11	149	1.00
19	1	4	7	7	85	162	21	287	1.93
20	4	7	49	40	212	916	125	1,353	9.10
21	0	0	19	12	126	287	38	482	3.24
22	1	4	30	14	151	274	36	510	3.43
23	0	3	14	4	116	301	25	463	3.11
24	1	1	25	10	124	266	34	461	3.10
25	0	4	6	0	88	130	26	254	1.71
27	0	3	13	4	124	335	56	535	3.60
28	0	2	51	31	139	845	42	1,110	7.46
29	1	6	73	15	159	1,089	73	1,416	9.51
30	0	3	15	16	114	296	32	476	3.20
31	1	7	39	23	126	339	55	590	3.96
32	3	1	28	36	116	421	52	657	4.41
33	1	5	16	9	133	153	45	362	2.43
34	5	3	12	27	160	242	55	504	3.39
35	0	1	32	19	126	477	41	696	4.68
36	0	5	38	7	232	703	55	1,040	6.97
37	0	0	5	1	84	160	20	270	1.81
38	0	1	14	3	102	161	38	319	2.14
39	0	2	36	18	158	414	61	689	4.63
40	1	4	34	69	258	279	106	751	5.05
	21	72	598	381	3,518	9,147	1,145	14,882	100.00

*273 of the total are outside recoveries.

TABLE 22
CRIME CLOCK CALENDAR YEAR 1981

CLASSIFICATION	NUMBER	RATE
HOMICIDE/MANSLAUGHTER	20	1 Every 18.3 Days
RAPE	72	1 " 5.1 "
ROBBERY	598	1 " 14.6 Hours
AGGRAVATED ASSAULT	381	1 " 23.0 "
BURGLARY	3,518	1 " 2.5 "
LARCENY	9,147	1 " 1.0 "
AUTO THEFT	872	1 " 10.0 "
SUB TOTAL: MAJOR OFFENSES	14,608	1 " 35.9 Minutes
ARSON	82	1 " 4.5 Days
BATTERY	1,504	1 " 5.8 Hours
CITY ORDINANCE	492	1 " 17.8 "
DISORDERLY CONDUCT	965	1 " 9.1 "
DRUG LAWS	415	1 " 21.1 "
DRUNK DRIVING	308	1 " 1.2 Days
DRUNKENNESS	881	1 " 9.9 Hours
FORGERY	513	1 " 17.1 "
FRAUD	468	1 " 18.7 "
LIQUOR LAWS	150	1 " 2.4 Days
OFFENSES AGAINST FAMILY	10	1 " 36.5 "
RECEIVING STOLEN PROPERTY	264	1 " 1.4 "
SEX OFFENSES	310	1 " 1.2 "
SUSPICIOUS CIRCUMSTANCES	7,670	1 " 68.5 Minutes
TRAFFIC HAZARDOUS CITATIONS	26,094	1 " 20.1 "
TRAFFIC-NON HAZARDOUS CITATIONS	35,591	1 " 14.8 "
VAGRANCY	264	1 " 1.4 Days
VANDALISM	2,271	1 " 3.9 Hours
VICE	33	1 " 11.1 Days
WEAPON OFFENSES	404	1 " 21.7 Hours
ALL OTHERS	40,700	1 " 12.9 Minutes
SUB TOTAL: OTHER OFFENSES	119,389	1 " 4.4 Minutes
SUB TOTAL: MAJOR AND OTHER	133,997	1 " 3.9 "
MISCELLANEOUS POLICE ACTIVITIES	12,673	1 " 41.5 "
ASSISTS TO OUTSIDE AGENCIES	2,467	1 " 3.5 Hours
WARRANT ACTIVITIES	19,349	1 " 27.2 Minutes
TELECOMMUNICATION ACTIVITIES	87,399	1 " 6.0 Minutes
TOTAL	255,885	1 " 2.0 Minutes

TABLE 23
PERCENT OF MAJOR OFFENSES CLEARED BY ARRESTS
COMPARED WITH OTHER UNITED STATES POPULATION CENTERS*

GEOGRAPHICAL AREA OR COMPARATIVE POPULATION CENTER	YEAR	MURDER**	RAPE	ROBBERY	AGGRAVATED ASSAULT	BURGLARY	LARCENY	AUTO THEFT	CRIME INDEX
Berkeley	1981	60.0	61.1	27.0	80.0	11.8	15.9	15.2	17.3
	1980	81.8	81.2	25.5	78.7	12.6	18.1	20.6	19.2
	1979	116.0	85.5	32.2	83.7	14.8	19.0	34.1	22.2
	1978+	52.6	46.5	30.0	85.0	9.6	22.0	42.0	22.5
	1977+	82.4	53.3	34.0	88.0	15.0	18.5	34.0	21.3
1976+	86.0	40.8	38.0	90.0	13.0	18.9	24.7	20.5	
Average All Pacific States	1980	63.8	43.7	23.9	55.8	13.2	18.0	14.6	18.8
	1979	65.7	41.8	24.9	55.8	13.9	19.6	15.2	19.9
	1978	70.3	44.0	25.8	57.2	15.1	20.9	16.9	21.0
	1977	71.8	45.7	28.4	58.1	16.2	21.1	17.6	21.6
Average of U.S. Cities 50,000 to 100,000 Population	1980	73.7	46.9	25.2	58.0	14.4	19.6	13.3	19.7
	1979	76.9	46.2	27.2	60.3	15.3	19.6	14.3	20.2
	1978	82.9	47.9	28.3	59.9	16.3	20.9	15.5	21.4
	1977	83.6	46.4	29.1	59.0	16.6	20.7	16.1	21.3
1976	85.9	49.3	30.2	61.6	17.0	19.6	15.8	20.6	
Average of U.S. Cities 100,000 to 250,000 Population	1980	78.9	47.8	25.9	58.4	14.1	18.9	13.6	19.6
	1979	79.8	49.1	28.7	62.3	15.3	19.8	15.5	20.6
	1978	80.8	50.0	29.4	65.9	16.4	20.2	15.8	21.4
	1977	79.3	52.6	29.8	65.8	17.1	20.2	15.0	21.4
1976	84.1	55.5	33.3	71.6	17.8	19.2	16.8	21.4	
Average of U.S. Cities 250,000 And Over Population	1980	67.6	46.9	21.6	54.6	12.2	17.8	9.0	17.9
	1979	69.7	47.0	23.2	55.2	13.3	18.1	9.8	18.6
	1978	73.0	50.1	24.3	59.4	14.3	19.8	11.2	20.1
	1977	72.6	51.4	26.5	60.3	15.7	20.2	11.5	20.7
1976	75.3	51.3	24.8	59.3	16.0	18.8	10.7	19.8	
Average All U.S. Cities	1980	71.7	47.6	23.3	57.9	13.8	18.6	13.1	19.2
	1979	73.4	47.8	24.9	59.2	14.6	18.8	14.1	19.8
	1978	76.2	49.8	25.9	61.6	15.6	19.8	15.3	20.5
	1977	75.5	51.2	26.9	61.8	16.3	20.0	14.6	21.0
1976	79.0	52.3	26.9	62.9	16.8	19.1	14.4	20.5	

*Source of Information: F.B.I. Uniform Crime Report
 **"Murder" and "Non-Negligent Manslaughter" were separate categories prior to 1977.
 ***1980 Census Figure

+Previous editions of Annual Report contained incomplete clearance data.

TABLE 24
MAJOR CRIME RATE PER 100,000 POPULATION FOR THE CITY
COMPARED WITH OTHER UNITED STATES POPULATION CENTERS*

GEOGRAPHICAL AREA OR COMPARATIVE POPULATION CENTER	YEAR	MURDER**	RAPE	ROBBERY	AGGRAVATED ASSAULT	BURGLARY	LARCENY	AUTO THEFT	CRIME INDEX
Population 103,328***	1980	10.6	66.7	587.4	331.0	3083.4	7612.7	927.1	12619.0
	1979	5.3	78.9	526.8	354.9	2739.9	6644.7	890.5	11241.0
	1978	17.5	77.1	449.6	351.4	2783.7	6080.2	594.1	10453.9
	1977	11.4	96.4	433.9	290.1	3257.0	5518.4	584.5	10294.3
	1976	10.5	100.9	523.7	238.6	3269.3	5978.1	713.2	10836.8
Average of San Francisco Oakland Metropolitan Area†	1980	11.7	64.0	520.6	408.2	2267.5	4571.2	697.3	8540.6
	1979	11.0	56.0	426.1	369.2	2199.9	4424.1	731.7	8218.0
	1978	11.2	53.0	414.4	341.2	2249.0	4279.2	698.8	8046.8
	1977	11.9	51.9	378.6	326.5	2255.1	4170.0	745.1	7939.0
	1976	12.2	50.4	420.5	319.3	2458.4	4487.1	745.9	8493.8
Average of State of California	1980	14.5	58.2	384.2	436.7	2316.5	3880.0	742.9	7833.1
	1979	13.0	53.9	333.8	410.3	2186.8	3732.6	738.3	7468.6
	1978	11.7	50.3	306.1	374.4	2193.3	3488.8	691.3	7116.3
	1977	11.5	49.4	287.0	358.0	2139.4	3499.8	663.5	7008.7
	1976	10.3	44.7	275.6	338.7	2174.6	3745.8	644.3	7234.0
Average of U.S. Cities 1000,000 to 250,000 Population	1980	12.3	56.6	332.6	410.9	2475.4	4795.0	661.3	8742.0
	1979	11.4	50.3	281.9	357.9	2114.1	4355.7	656.4	7826.7
	1978	10.3	43.8	244.3	328.5	1961.0	3969.0	623.8	7180.7
	1977	22.9	52.0	237.6	296.4	1998.4	4369.5	610.4	7556.7
	1976	10.0	34.9	238.0	289.9	1999.6	4375.7	609.9	7560.8
Average of All U.S. Cities	1980	11.8	43.1	341.5	349.6	1950.3	3912.7	628.9	7237.8
	1979	11.2	40.7	293.6	322.8	1725.2	3601.4	627.4	6622.3
	1978	10.1	36.0	262.9	293.4	1621.8	3304.5	571.1	6099.8
	1977	10.2	34.2	262.4	278.1	1612.3	3297.2	572.2	6066.5
	1976	9.9	30.8	275.9	263.7	1652.1	3561.2	572.4	6368.7
U.S. TOTAL	1980	10.3	37.3	254.4	299.0	1708.2	3244.1	505.3	6058.7
	1979	10.1	35.7	223.3	285.7	1539.0	3052.3	513.7	5659.9
	1978	9.3	32.1	202.7	263.7	1471.4	2826.6	473.8	5279.5
	1977	9.3	30.7	201.9	250.3	1460.0	2816.2	471.3	5239.7
	1976	8.8	26.4	195.8	228.7	1439.4	2921.3	446.1	5266.5

*Source of Information: F.B.I. Uniform Crime Report.
 **"Murder" and "Non-Negligent Manslaughter" were separate categories prior to 1977.
 ***1980 Census figure.

†Alameda, Contra Costa, Marin, San Francisco and San Mateo Counties.

TABLE 25
OFFENSES KNOWN AND ARRESTS
1979 - 1981

CLASSIFICATION	1979		1980		1981	
	OFF.	ARR.	OFF.	ARR.	OFF.	ARR.
MURDER/MANSLAUGHTER	6	9	11	9	20	11
RAPE	90	36	69	35	72	35
ROBBERY	601	163	607	146	598	129
AGGRAVATED ASSAULT	405	235	342	192	381	172
BURGLARY	3126	369	3186	418	3518	479
LARCENY	7581	1132	7866	1041	9147	956
AUTO THEFT	1016	155	958	137	872	134
SUB TOTAL: MAJOR OFF.	12825	2099	13039	1978	14608	1916
ARSON	74	15	76	10	82	18
BATTERY	1634	349	1331	333	1504	357
CITY ORDINANCE	556	0	538	0	492	0
DISORDERLY CONDUCT	731	62	720	75	965	85
DRUG LAWS	590	268	529	289	415	305
DRUNK DRIVING	258	244	280	277	308	286
DRUNKENNESS	606	481	691	559	881	682
FEDERAL (FELONIES) LAWS	22	8	50	23	36	4
FORGERY	401	41	619	67	513	80
FRAUD	437	17	417	9	468	20
GAMBLING	5	8	11	25	10	12
LIQUOR LAWS	107	22	163	46	150	19
MISCELLANEOUS FELONIES	70	14	78	15	115	108
MISCELLANEOUS MISDEMEANORS	834	0	898	0	910	0
OFFENSES AGAINST FAMILY	20	8	27	5	25	12
RECEIVING STOLEN PROPERTY	152	97	137	99	264	132
SEX OFFENSES	265	47	253	41	310	43
SUSPICIOUS CIRCUMSTANCES	6905	1	6908	0	7670	0
TRAFFIC-HAZARDOUS	15519	15405	16289	16102	26094	25927
TRAFFIC-NON HAZARDOUS	32959	683	37695	541	35591	627
VAGRANCY	354	63	289	85	264	105
VANDALISM	3161	345	2606	328	2271	303
VICE	75	64	48	17	33	13
WEAPON OFFENSES	393	112	361	110	404	124
WELFARE & INSTITUTIONS	319	288	312	297	378	313
ALL OTHER OFFENSES	37468	1881	49558	958	39251	5556
SUB TOTAL: OTHER OFF.	103915	20523	120884	20311	119404	35131
TOTAL	116740	22622	113923	22289	134012	37047

TABLE 26

MAJOR OFFENSES KNOWN TO AND CLEARED BY POLICE

CLASSIFICATION	OFFENSES REPORTED	UNFOUNDED	ACTUAL	CLEARED BY ARREST	CLEARED OTHER MEANS	TOTAL CLEARED
HOMICIDE						
Total	21	1	20	12	1	13
Murder	17	1	16	9	0	9
Manslaughter	4	0	4	3	1	4
RAPE						
Total	72	0	72	42	5	47
Completed	48	0	48	32	0	32
Attempted	24	0	24	10	5	15
ROBBERY						
Total	598	0	598	137	25	162
Armed	379	0	379	83	16	99
Strong Armed	219	0	219	54	9	63
ASSAULT, AGGRAVATED						
Total	381	0	381	193	112	305
Firearm	40	0	40	25	5	30
Cut	90	0	90	36	37	73
Other Weapon	194	0	194	82	64	146
On Police	57	0	57	50	6	56
BURGLARY						
Total	3518	0	3,518	366	51	417
Force	2125	0	2,125	245	39	284
No Force	1013	0	1,013	83	7	90
Attempt	380	0	380	38	5	43
THEFT						
Total	9147	0	9,147	1,232	224	1,456
\$200 - Over	1227	0	1,227	43	13	56
\$50 - \$199	2718	0	2,718	153	40	193
Under \$50	5202	0	5,202	1,036	171	1,207
AUTO THEFT*						
Total	872	0	872	102	31	133
SUB TOTAL: MAJOR	14609	1	14,608	2,084	449	2,533

*Does not include outside auto recoveries.

TABLE 26 (CONTINUED)
OTHER OFFENSES KNOWN TO AND CLEARED BY POLICE
MISCELLANEOUS CLASSIFICATIONS

CLASSIFICATION	OFFENSES REPORTED	UNFOUNDED	ACTUAL OFFENSES	CLEARED BY ARREST	CLEARED OTHER MEANS	TOTAL CLEARED
ARSON	82	0	82	23	9	32
BATTERY	1,504	0	1,504	413	840	1,253
CITY ORDINANCE	492	0	492	157	294	451
DISORDERLY CONDUCT	965	0	965	239	328	567
DRUGS	415	0	415	359	40	399
DRUNK DRIVING	308	0	308	293	9	302
DRUNKENNESS	881	0	881	855	15	870
FEDERAL LAWS	36	0	36	7	25	32
FORGERY	513	0	513	211	34	245
FRAUD	468	0	468	190	57	247
GAMBLING	10	0	10	8	2	10
LIQUOR LAWS	150	0	150	145	3	148
MISCELLANEOUS FELONY	115	0	115	67	16	83
MISCELLANEOUS MISD	910	0	910	419	433	852
OFFENSE VS FAMILY	25	0	25	10	14	24
REC. STOLEN PROP.	264	0	264	185	19	204
SEX OFFENSES	310	0	310	116	38	154
SUSPICIOUS CIRCUM.	7,670	0	7,670	5	7,510	7,515
TRAFFIC-HAZARDOUS*	342	0	342	161	28	189
TRAFFIC-NON HAZAR.*	659	0	659	1	626	627
VAGRANCY	264	0	264	99	18	117
VANDALISM	2,271	0	2,271	455	304	759
VICE	33	0	33	31	1	32
WEAPON OFFENSES	404	0	404	238	106	344
WELFARE & INSTITUT.	378	0	378	267	103	370
ALL OTHERS	38,250	0	39,251	614	34,669	35,283
SUB-TOTAL: OTHER	57,719	0	58,720	5,568	45,541	51,109
SUB-TOTAL: MAJOR	14,609	1	14,608	2,082	448	2,530
TOTAL	72,328	1	73,328	7,650	45,989	53,639

*Custody Cases Only

TABLE 27

AGE, SEX AND RACE OF ADULTS ARRESTED
18 YEARS OF AGE AND OVER

CLASSIFICATION	18		19		20		21		22		23		24		25-29		30-34	
	M	F	M	F	M	F	M	F	M	F	M	F	M	F	M	F	M	F
MAJOR OFFENSES																		
MURDER					1				1				1	2			1	
NEG. MANSLAUGHTER														1				
RAPE	1		2		1		1				2		6		7		4	
ROBBERY	7	3	13	1	9		5	1		1	2		2	1	15	1	12	1
AGGRAVATED ASSAULT	5	1	4		3		6		5		6	1	2		33	9	26	4
BURGLARY	35	1	30	4	21		20	5	12	3	20	1	12	2	79	11	45	7
LARCENY	58	14	45	12	38	15	26	12	22	1	18	2	24	14	118	37	97	27
AUTO THEFT	7	1	9		3		6		3		5	2	5		11	2	11	1
OTHER OFFENSES																		
ARSON	1		1												5			
BATTERY	6	3	12		7		13		9	1	10	1	5		49	6	59	5
FORGERY	3	1	2	5	1	2	1	2	2	1		1	2	4	13	13	8	5
CHECKS & FRAUD	2					1		1	1						7	3	2	4
STOLEN PROPERTY	16	1	5	1	8		1	1	5		1	1	5	1	18	5	21	4
WEAPONS	8		-6		4		5		2		4		4		17	3	18	2
SEX OFFENSES			1		4				1				2		7		6	2
OFFENSES VS FAMILY				1					1				1		1	1	2	1
DRUG LAWS	15		10	2	14	1	15		15	1	17	3	17		55	9	45	6
LIQUOR LAWS	1				1		3						2		6			
DRUNKENNESS	12	1	13	2	7		10	3	18	2	17	2	20	2	135	17	164	13
DISORDERLY CONDUCT	2		5		1	1	1		2	1	2		2	2	18		12	2
VAGRANCY	3	2	4	2	1		1	2	3	1	6	2	4		17	5	6	1
DRUNK DRIVING	7	1	5		10	3	13	3	5	1	6	1	9		42	4	35	5
PROSTITUTION & VICE		2		3		4		6		7		4		2	2	7	1	1
VANDALISM	4		7	1	15	1	9		12	3	10	2	5	1	51	7	40	8
ALL OTHERS	34	6	52	3	61	3	78	10	64	7	59	7	73	4	266	48	207	30
SUB TOTAL: NO TRAFFIC	227	37	226	34	210	28	214	40	183	23	185	26	202	34	975	188	822	129
TRAFFIC ARRESTS	16	3	20	2	35	4	29	4	46	1	37	4	42	5	147	16	83	8
TOTAL	243	40	246	36	245	32	243	44	229	24	222	30	244	39	1122	204	905	137

TABLE 26 (CONTINUED)
OTHER OFFENSES KNOWN TO AND CLEARED BY POLICE
MISCELLANEOUS CLASSIFICATIONS

CLASSIFICATION	OFFENSES REPORTED	UNFOUNDED	ACTUAL OFFENSES	CLEARED BY ARREST	CLEARED OTHER MEANS	TOTAL CLEARED
ARSON	82	0	82	23	9	32
BATTERY	1,504	0	1,504	413	840	1,253
CITY ORDINANCE	492	0	492	157	294	451
DISORDERLY CONDUCT	965	0	965	239	328	567
DRUGS	415	0	415	359	40	399
DRUNK DRIVING	308	0	308	293	9	302
DRUNKENNESS	881	0	881	855	15	870
FEDERAL LAWS	36	0	36	7	25	32
FORGERY	513	0	513	211	34	245
FRAUD	468	0	468	190	57	247
GAMBLING	10	0	10	8	2	10
LIQUOR LAWS	150	0	150	145	3	148
MISCELLANEOUS FELONY	115	0	115	67	16	83
MISCELLANEOUS MISD	910	0	910	419	433	852
OFFENSE VS FAMILY	25	0	25	10	14	24
REC. STOLEN PROP.	264	0	264	185	19	204
SEX OFFENSES	310	0	310	116	38	154
SUSPICIOUS CIRCUM.	7,670	0	7,670	5	7,510	7,515
TRAFFIC-HAZARDOUS*	342	0	342	161	28	189
TRAFFIC-NON HAZAR.*	659	0	659	1	626	627
VAGRANCY	264	0	264	99	18	117
VANDALISM	2,271	0	2,271	455	304	759
VICE	33	0	33	31	1	32
WEAPON OFFENSES	404	0	404	238	106	344
WELFARE & INSTITUT.	378	0	378	267	103	370
ALL OTHERS	38,250	0	39,251	614	34,669	35,283
SUB-TOTAL: OTHER	57,719	0	58,720	5,568	45,541	51,109
SUB-TOTAL: MAJOR	14,609	1	14,608	2,082	448	2,530
TOTAL	72,328	1	73,328	7,650	45,989	53,639

*Custody Cases Only

TABLE 27 (CONTINUED)
AGE, SEX AND RACE OF ADULTS ARRESTED
18 YEARS OF AGE AND OVER

CLASSIFICATION	35-39		40-44		45-49		50-54		55-59		60-64		65 & OVER		TOTAL		RACE		
	M	F	M	F	M	F	M	F	M	F	M	F	M	F	M	F	WHITE	NEGRO	OTHER
MAJOR OFFENSES																			
MURDER					1		1								7	1	3	5	
NEG. MANSLAUGHTER		1			1										2	1	3		
RAPE			1												25		2	21	2
ROBBERY	1		2	1											68	10	15	61	2
AGGRAVATED ASSAULT	18	2	9	2			2		1	1			3		123	20	36	93	14
BURGLARY	22	2	9		4	1	3			1		1		312	39	97	231	23	
LARCENY	50	13	16	6	6	3	11	2	3	3	2	7	1	6	535	174	296	330	83
AUTO THEFT	1		1		2		2		1						67	6	31	40	2
OTHER OFFENSES																			
ARSON	2								1						10		4	6	
BATTERY	29	4	11	2	5		3		1		2	1	1		222	23	87	139	19
FORGERY	3	1	2		3										40	35	10	65	
CHECKS & FRAUD															12	9	8	13	
STOLEN PROPERTY	8		2		1				1		1				93	14	21	75	11
WEAPONS	6	1	13	2	3		5		1		2		1		99	8	32	68	7
SEX OFFENSES	6		4		2		1		2		1				37	2	24	14	1
OFFENSES VS FAMILY	3	1			1										9	4	4	8	1
DRUG LAWS	24	1	11	1	7		1			1				246	25	152	114	5	
LIQUOR LAWS			1		1										15		8	7	
DRUNKENNESS	62	6	59	2	34	2	36		23		24		7	1	641	53	341	287	66
DISORDERLY CONDUCT	11	1	6	1			2	1			1				65	9	34	35	5
VAGRANCY	18	2	2	1	2										67	18	61	21	3
DRUNK DRIVING	39	2	27	1	13	1	13	2	13	3	14	1	7		258	28	150	109	27
PROSTITUTION & VICE															3	36	23	13	3
VANDALISM	26	1	10	3	1		2		2	1	3		1	3	198	31	113	96	20
ALL OTHERS	112	11	47	11	21	4	14	2	14	1	10		5		1117	147	464	742	58
SUB TOTAL: NO TRAFFIC	441	49	233	33	108	11	96	7	63	11	60	10	26	10	4271	670	2003	2590	348
TRAFFIC ARRESTS	51	6	17	2	11	2	5		13		2	1	4		558	58	177	402	37
TOTAL	492	55	250	35	119	13	101	7	76	11	62	11	30	10	4829	728	2180	2992	385

TABLE 28

AGE, SEX AND RACE OF JUVENILES DETAINED

CLASSIFICATION	UNDER 11		11-12		13-14		15		16		17		TOTAL		RACE		
	M	F	M	F	M	F	M	F	M	F	M	F	M	F	CAUC.	NEGRO	OTHER
MAJOR OFFENSES																	
MURDER																	
NEG. MANSLAUGHTER							1						1			1	
RAPE					1		5		2		2		10		5	4	1
ROBBERY			6		12	4	5	4	6	1	12	1	41	10	7	39	5
AGGRAVATED ASSAULT	1	1			8	1	9	1	3		3	2	24	5	7	18	4
BURGLARY	3		9	1	33	5	27	2	19		29		120	8	30	88	10
LARCENY	11	5	34	16	95	37	54	31	59	22	53	23	306	134	137	273	30
AUTO THEFT			1		5	3	16	2	23	1	9	2	54	8	14	45	3
OTHER OFFENSES																	
ARSON	4		2		1						1		8		2	6	
BATTERY	6		11	2	36	15	23	6	13	4	18	6	107	33	27	106	7
DISORDERLY CONDUCT			2		4		3	1	7		4	1	20	2	6	14	2
DRUG LAWS			1		6	1	5	1	13	3	11	2	36	7	20	21	2
DRUNK DRIVING											2		2		1		1
DRUNKENNESS					2	1	3		3	2	5	5	13	8	16		5
FORGERY/FRAUD					2				1		2	1	5	1	3	3	
GAMBLING							1		1		2		4			4	
LIQUOR LAWS						1			1		2	1	3	2	4		1
REC. STOLEN PROPERTY			4		10		6	1	3		1		24	1	3	22	
RUNAWAYS	3	2	19	11	35	51	6	29	8	24	8	6	79	123	73	114	15
SEX OFFENSES			1		3					1		1	5	1	2	3	1
VAGRANCY			1		9		3		3	1	3	2	19	3	3	15	4
VANDALISM	5		14	3	25	4	13	2	19	1	15	1	91	11	33	63	6
WEAPONS			1	11		2	1	3	1	8	2	2	24	5	2	21	6
ALL OTHERS	33	24	11	4	37	21	22	11	30	16	33	6	166	82	75	160	13
TOTAL	66	32	116	38	335	144	204	92	218	76	223	62	1162	444	470	1020	116

TABLE 29
ADULT CRIMINAL CHARGES AND DISPOSITIONS

CLASSIFICATION	#PERSONS CHARGED				DISPOSITIONS**				
	ARRESTED	ARRESTED VIA CITATION	RELEASED NO COMPLAINT	HOLD FOR PROSECUTION*	GUILTY		ACQUITTED OR DISMISSED	REFERRED TO JUVENILE CT OR JUVENILE BUREAU	OTHER JURISDICTION
					AS CHARGED	OF LESSER OFFENSE			
MURDER	8		1	6	1	1			
MANSLAUGHTER	3			4	3	1			
RAPE	25		3	22	11	6	4		
ROBBERY	78		11	64	20	16	9		3
AGGRAVATED ASSAULT	143		27	107	43	31	26		9
BURGLARY	351		46	291	130	61	43		14
LARCENY	516	193	292	407	283	29	145		10
AUTO THEFT	72	1	22	46	15	10	6		5
SUB TOTAL: MAJOR	1196	194	402	947	506	155	233		41
ARSON	10		1	8	4	3			1
BATTERY	217	28	71	169	98	21	65		5
DISORDERLY CONDUCT	63	11	31	41	33	1	17		2
DRUG OFFENSES	262	9	70	191	99	24	58		10
DRUNK DRIVING	284	2	7	278	219	19	10		1
DRUNKENNESS	661	33	384	295	239	6	68		15
FEDERAL FELONIES	4			1					3
FORGERY	74	1	6	65	41	7	10		4
FRAUD	20	1	3	18	10	3	5		
GAMBLING	8	1	2	7	6		1		
LIQUOR LAWS	14	1	4	8	5	2	3		3
OFFENSES VS FAMILY	12	1	2	11	4		3		
OTHER MISC. FELONIES	105		3	34	16	1	6		68
REC. STOLEN PROPERTY	107		34	65	24	12	17		8
SEX OFFENSES	38	1	5	34	13	11	5		
VAGRANCY	83	2	24	59	37	5	26		2
VANDALISM	201	28	63	160	125	1	33		6
VICE	12	4	7	9	11	3	11		
WEAPON OFFENSES	95	12	14	88	54	9	32		5
ALL OTHERS	1709	53	136	901	552	24	328		725
SUB TOTAL: OTHERS	3979	188	867	2442	1590	152	698		858
TOTAL	5175	382	1269	3389	2096	307	931		899

*Includes dispositions of cases pending prior to 1981.
**Does not include those released "from" other jurisdictions.

TABLE 30

DISPOSITION OF JUVENILE OFFENDERS - BY OFFENSE

CLASSIFICATION	JUVENILE JUSTICE SYSTEM						COMMUNITY TREATMENT PROGRAMS						TOTALS	
	DETAINED JUVENILE HALL		NOTICE TO APPEAR		REFERRED JUSTICE AGENCY		COUNSELED AND RELEASED		COMMUNITY DIVERSION		SUPERVISION PROGRAM			
	M	F	M	F	M	F	M	F	M	F	M	F	M	F
MAJOR OFFENSES														
MURDER														
RAPE	3		6										9	
ROBBERY	31	7	6	1			3	1					40	9
AGGRAVATED ASSAULT	15	4	6		1		1						23	5
BURGLARY	65	1	34	4	1		15	2	3	1		1	118	8
GRAND THEFT	21	1	10	4	2		6						39	5
PETTY THEFT	72	7	54	18	9	2	127	99	4	4	2		268	130
AUTO THEFT	37	8	11		7			1					55	9
OTHER OFFENSES														
ARSON			2				4		2				8	
BATTERY	17	4	29	4	7	3	45	17	10	7			108	35
BEYOND CONTROL	8	16			3	2		1	6	2			17	21
DISORDERLY CONDUCT	2		3		4		7						16	
DRUG LAWS	23	3	3	2			11	2	1	1	1		39	8
DRUNK DRIVING														
GAMBLING	3						1						4	
LIQUOR LAWS		3	4	1		1	8	2	3	1		1	15	9
MALICIOUS MISCHIEF	9	1	26	2	3		55	8	3	1			96	12
REC. STOLEN PROPERTY	11	1	5		1		8	1					25	2
RUNAWAY	16	36			13	29	29	36	22	22	1		81	123
SCHOOL LOITERING	2		5		2	1	8		1				18	1
SEX OFFENSES	2	2	4	1	1		1						8	3
WEAPON OFFENSES	7	1	4	1	1		10	2					22	4
ALL OTHER	45	12	24	1	16	1	22	6	1				108	20
SUB TOTAL (BY SEX)	389	107	236	39	71	39	361	178	56	39	4	2	1117	404
TOTAL	496		275		110		539		95		6		1521	

TABLE 31
RESIDENCE DATA ON PERSONS ARRESTED
(ADULTS AND JUVENILES)

CLASSIFICATION	BERKELEY RESIDENTS	PERSONS NOT RESIDING IN BERKELEY	TOTAL ARRESTED	IN COUNTY LESS THAN ONE YEAR	IN STATE LESS THAN ONE YEAR
MURDER	6	1	8	3	1
MANSLAUGHTER	1	4	4	4	2
RAPE	16	19	35	13	3
ROBBERY	46	83	129	54	23
AGGRAVATED ASSAULT	110	62	172	64	41
BURGLARY	200	279	479	172	80
LARCENY	562	587	1,149	462	249
AUTO THEFT	61	74	135	60	41
SUB TOTAL: MAJOR	1,002	1,109	2,111	832	440
ARSON	14	4	18	12	10
BATTERY	265	120	385	146	105
DISORDERLY CONDUCT	42	54	96	34	24
DRUG LAWS	122	192	314	139	83
DRUNK DRIVING	116	172	288	131	63
DRUNKENNESS	287	428	715	422	330
FORGERY/FRAUD	40	62	102	30	10
GAMBLING	7	6	13	1	0
LIQUOR LAWS	8	12	20	10	6
REC. STOLEN PROPERTY	66	66	132	40	27
RUNAWAYS	194	47	241	105	85
SEX OFFENSES	24	20	44	20	10
VAGRANCY	45	62	107	58	38
VANDALISM	170	161	331	138	91
WEAPONS	66	70	136	54	21
ALL OTHERS	884	1,226	2,110	821	392
SUB TOTAL: OTHER	2,350	2,702	5,052	2,161	1,295
TOTAL	3,352	3,811	7,163	2,993	1,735

TABLE 32
AUTO THEFT AND AUTO RECOVERIES

CLASSIFICATION	1978	1979	1980	1981
AUTO THEFT				
AUTOS REPORTED STOLEN IN BERKELEY	818	1016	958	872
AUTO RECOVERIES				
AUTOS RECOVERED IN BERKELEY	350	489	442	360
AUTOS RECOVERED BY OUTSIDE AGENCIES	316	369	327	298
AUTOS STOLEN OUTSIDE/RECOVERED IN BERKELEY	253	238	181	273
% OF LOCAL STOLEN AUTOS RECOVERED	81.9	84.3	80.2	75.5
CONDITION OF IGNITION				
KEY LEFT IN AUTO OR NO KEY NEEDED	208	284	213	155
IGNITION SHORTED	421	520	494	424
UNKNOWN OR ATTEMPT	37	54	62	79
TOTALS	666	858	769	658

TABLE 33
VALUE OF PROPERTY REPORTED STOLEN AND AMOUNT RECOVERED BY KIND OF PROPERTY*

KIND OF PROPERTY	AMOUNT STOLEN	AMOUNT RECOVERED	% AMOUNT RECOVERED	CASES PROPERTY STOLEN	CASES PROPERTY RECOVERED
Currency	\$ 431,328	\$ 15,450	3.58	2,094	238
Jewelry	706,877	42,671	6.04	603	119
Furs/Clothing	123,352	21,709	17.60	717	256
Off. Equipment	173,476	19,609	11.30	176	16
Household	84,551	12,913	15.27	155	21
Consumables	27,791	4,526	16.28	416	241
TV/Radio	869,773	141,910	16.32	2,735	206
Guns	59,408	20,331	34.22	71	5
Miscellaneous	1,010,922	289,400	28.63	6,353	776
Livestock	7,535	-0-	-0-	2	-0-
Autos**	1,053,916	912,094	86.54	872	658
TOTAL	\$4,548,929	\$1,480,613	32.55	14,194	2,529

*Includes following offenses: Homicide, Rape, Robbery, Burglary, Larceny and Local Stolen/Recovered Autos.
**Includes: Local Stolen/Recovered Autos and Vehicles taken during commission of crime; Outside Recoveries not included.

TABLE 34
VALUE OF PROPERTY REPORTED STOLEN AND AMOUNT RECOVERED BY TYPE OF OFFENSE

CLASSIFICATION	STOLEN PROPERTY		RECOVERED PROPERTY	
	# CASES	VALUE	# CASES	VALUE
HOMICIDE	20			
RAPE	72	\$ 4,530	4	\$ 254
ROBBERY - TOTAL	598	280,544	76	93,377
a. Stores and Shops	144	128,412	9	51,826
b. Residences	51	17,688	6	522
c. Banks	23	37,391	2	2,330
d. Other*	380	97,053	59	38,699
BURGLARY - TOTAL	3,518	1,852,380	304	209,251
a. Residential (Day)	1,766	933,185	126	64,603
Residential (Night)	651	406,979	87	91,075
b. Commercial (Day)	828	435,962	49	32,617
Commercial (Night)	273	76,254	42	20,956
LARCENY - TOTAL	9,147	1,357,559	1,492	265,637
a. Purse Snatch	164	22,599	51	5,823
b. Pick Pocket	169	9,826	16	437
c. Shoplift	1,284	77,319	901	29,737
d. From Auto	3,218	589,671	156	74,924
e. Auto Accessories	844	51,370	19	1,263
f. Bicycles	735	47,674	68	3,870
g. Coin Operated Machines	62	3,344	4	6
h. From Buildings	2,087	300,143	202	30,658
i. Other	584	255,613	75	118,913
AUTO THEFT - TOTAL	872	1,053,916	924	1,422,027
a. Local**	872	1,053,916	658	912,094
b. Outside			273	509,933
TOTAL	14,227	\$4,548,929	2,800	\$1,990,546

*Includes: Street, Service Stations and other bldgs.
**Does not include vehicles taken during commission of another crime.

TABLE 35
PERSONS REPORTED MISSING

REASON/CONDITION	UNDER 10 YEARS		10 TO 19 YEARS		20 TO 29 YEARS		30 TO 39 YEARS		40 TO 49 YEARS		50 AND OVER		TOTAL
	M	F	M	F	M	F	M	F	M	F	M	F	
CHRONIC DRINKING													
FAMILY TROUBLE						1							1
SENILITY OR MENTAL DISTURB.			13	16	3	1		2	1	1	15	6	58
SMALL CHILDREN LOST	2												2
JUVENILE RUNAWAY		1	91	135									227
SPENT TIME WITH FRIEND	4	4	13	15	10	17	4	5	3		20	7	102
DELAYED, ETC.													
RUNAWAYS AND MARRIED													
FOUND DEAD													
UNFOUNDED NOT STATED													
ARRESTED ELSEWHERE					2								2
SICK, DESPONDENT, ETC.								1					
STILL MISSING			3		4	4	2	2	4	2	3	1	25
TOTALS	6	5	120	166	19	23	6	10	8	2	38	14	417

TABLE 36
SUICIDES AND ATTEMPTS

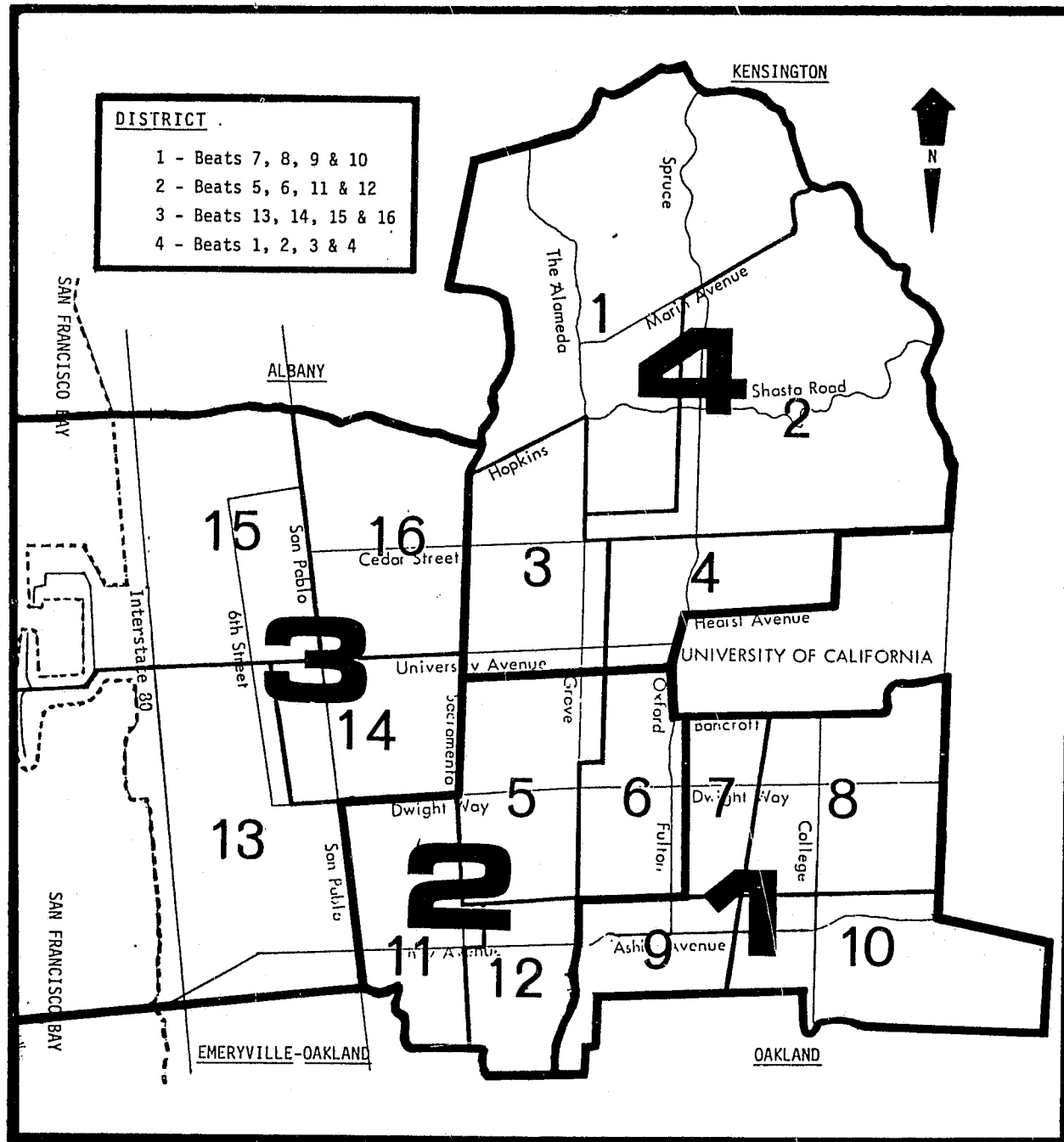
METHOD	ATTEMPTS			FATAL		
	Male	Female	Total	Male	Female	Total
Jump	2	2	4	2	1	3
Cutting or Piercing	5	6	11			
Drowning or Submersion	1		1			
Gas		3	3	1		1
Hanging	2		2	2		2
Poisons	3		3			
Overdose	10	34	44	5	3	8
Firearms	1		1	3	2	5
Other	1		1			
TOTAL	25	45	70	13	6	19

TABLE 37
MISCELLANEOUS POLICE ACTIVITIES

NATURE OF ACTIVITY	1978	1979	1980	1981
ALARMS (FALSE-ALL TYPES)	7680	8160	8194	8738
ARRESTS FOR OTHER JURISDICTIONS	901	934	1009	1038
FIRES (ASSISTING AT)	131	116	109	104
NON-INJURY TRAFFIC COLLISIONS (INVEST.)	3486	3244	3094	2793
TRANSPORT SERVICES (SUB TOTAL)	1219	1020	1276	797
a. CITIZEN REQUEST FOR AMBULANCE*	381	234	426	26
b. OTHER RUNS	838	786	850	771
TOTALS	13417	13474	13682	13470

*Ambulance service was transferred to the Fire Department on May 16, 1977 - subsequent yearly figures reflect transports to hospitals via police auto.

TABLE 38
 BEAT AND DISTRICT MAP FOR PATROL
 (EFFECTIVE JULY 27, 1980)



BERKELEY'S CHIEF POLICE EXECUTIVES
 1905 THROUGH THE PRESENT



TITLE	NAME	FROM	TO	YEARS
Chief of Police	August Vollmer	1905	1932	27
Chief of Police	John A. Greening	1932	1944	12
Chief of Police	John D. Holstrom	1944	1960	16
Chief of Police	Addison H. Fording	1960	1966	6
Chief of Police	William P. Beall	1966	1969	3
Chief of Police	Bruce R. Baker	1969	1973	4
Acting Chief of Police	Charles C. Plummer	1974	1974	-
Chief of Police	Wesley A. Pomeroy	1974	1977	3
Acting Chief of Police	Ralph F. Schillinger*	1976	1976	-
Acting Chief of Police	James R. Croke	1977	1977	-
Chief of Police	Odell H. Sylvester	1977	1980	3
Acting Chief of Police	Thomas W. Johnson	1980	Present	-

*Served during lengthy illness of Chief Pomeroy.

REMEMBERING

THOSE POLICE OFFICERS WHO HAVE GIVEN THEIR
LIVES IN THE PERFORMANCE OF THEIR DUTIES

RONALD TSUGIO TSUKAMOTO

1942 - 1970

"Hatred is not overcome by hatred
but by braveness"

JIMMIE HUGH RUTLEDGE

1923 - 1973

"He never grew old with time
because he grew with it"

DEPARTMENT RETIREMENTS DURING
YEAR

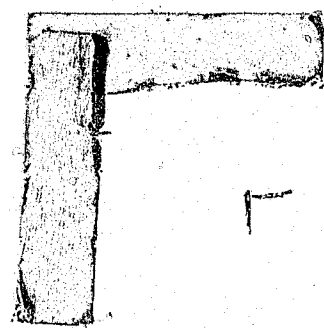
<u>NAME</u>	<u>APPOINTMENT DATE</u>	<u>RETIREMENT DATE</u>
Inspector J. D. Downing	September 1, 1954	December 30, 1981

ACKNOWLEDGEMENTS

This publication was prepared by: Planning and Research Bureau
Berkeley Police Department
2171 Mc Kinley Avenue
Berkeley, California 94703
(415) 644-6113

Annual Report Staff:

Officer in Charge..... Captain Michael J. Healy
Project Director..... Officer Stephen L. Hollister
(editing, layout, charts, tables, statistics)
Charts and Statistics..... Gordon Strobel
Officer Michael J. Holland
Photography..... Matthew Meredith
Narrative Contributors..... Captain Darrell T. Hickman
Captain Waymon E. Jenkins
Lieutenant Donald C. Smithson
Data Contributors..... Inspector Lester M. Johnson
Sergeant Robert T. Lawrence
Inspector Robert F. Maloney
Sergeant Dennis R. Burke
Assistant Police Officer
Loretta R. Mayer
Jan Gibson
Wanda Horne
Kathy Jan
Kate Kaneko
Typing..... Linda Billett
Data Review..... Lieutenant Thomas J. Haley
Printing..... Kashi Printing
2411 Telegraph Avenue
Berkeley, CA 94704
(415) 841-2062



END