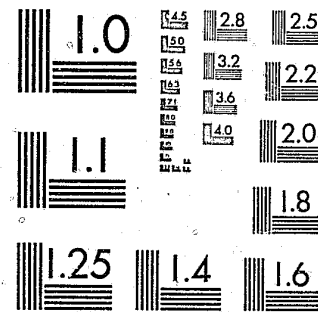


National Criminal Justice Reference Service



This microfiche was produced from documents received for inclusion in the NCJRS data base. Since NCJRS cannot exercise control over the physical condition of the documents submitted, the individual frame quality will vary. The resolution chart on this frame may be used to evaluate the document quality.



MICROCOPY RESOLUTION TEST CHART
NATIONAL BUREAU OF STANDARDS-1963-A

Microfilming procedures used to create this fiche comply with the standards set forth in 41CFR 101-11.504.

Points of view or opinions stated in this document are those of the author(s) and do not represent the official position or policies of the U. S. Department of Justice.

National Institute of Justice
United States Department of Justice
Washington, D. C. 20531

7/15/83

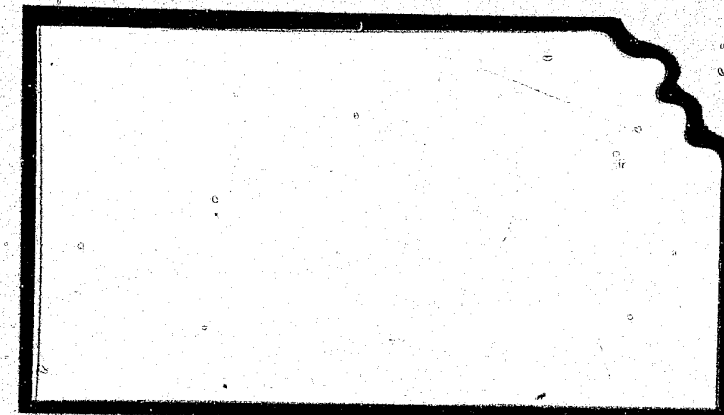
CR-SEP
12-288



Governor's Committee On Criminal Administration

Statistical Analysis Center

85420



Governor's Committee on Criminal Administration

Mr. David W. P. O'Brien
Executive Director

Statistical Analysis Center

Mr. Michael E. Boyer
Director

503 Kansas Avenue
Topeka, Kansas 66603
913/296-3066

NCJRS

SEE #1082

Prepared By

M. Kathleen Bledsoe

ACQUISITIONS

KANSAS JUVENILE JUSTICE INFORMATION SYSTEM
(KJJIS)

Annual Report - Calendar 1980

November 1, 1981

U.S. Department of Justice
National Institute of Justice

85420

This document has been reproduced exactly as received from the person or organization originating it. Points of view or opinions stated in this document are those of the authors and do not necessarily represent the official position or policies of the National Institute of Justice.

Permission to reproduce this copyrighted material has been granted by

Bureau of Justice Statistics
(kansas)

to the National Criminal Justice Reference Service (NCJRS).

Further reproduction outside of the NCJRS system requires permission of the copyright owner.

*** HIGHLIGHTS ***

*THE 22,784 JUVENILE COURT REFERRALS REPORTED BY ALL 29 JUDICIAL DISTRICTS IN 1980 REFLECTED A 1.2% INCREASE OVER 1979. (page 3)

*LARCENY-OTHER (16.4%) WAS THE MOST FREQUENT DELINQUENT/MISCREANT OFFENSE REPORTED IN 1980. (page 6)

*RUNNING AWAY (39.7%) CONTINUES TO BE THE MOST COMMON REFERRAL MADE IN THE STATUS OFFENSE CATEGORY. (page 6)

*JUVENILE'S REFERRED AS DEPRIVED SHOW THE LARGEST INCREASE IN 1980 (18.2%) OVER 1979. (page 8)

*THE AVERAGE AGE OF YOUTHS REFERRED TO THE COURT IN 1980 WAS 15.2 YEARS OLD. (page 16)

*MALE OFFENDERS ACCOUNT FOR 67.5% OF THE TOTAL NUMBER OF YOUTHS REFERRED TO THE COURT, BUT, ONLY SHOW AN INCREASE OF .1% IN 1980 OVER 1979. (page 18)

*THERE WERE 7,161 FEMALES REFERRED TO THE COURT IN 1980 WHICH IS AN INCREASE OF 4.1% IN 1980 OVER 1979. (page 18)

*39.2% OF THE TOTAL NUMBER OF ALL JUVENILE'S REFERRALS ARE DISMISSED. (page 22)

*40% OF ALL REFERRALS ARE DISPOSED OF IN TEN DAYS OR LESS. (page 22)

*81.6% OF THE TOTAL NUMBER OF JUVENILES REFERRED FOR DELINQUENT/MISCREANT OFFENSES ARE WHITE. (page 42)

*YOUTHS 17 YEARS OF AGE ACCOUNT FOR 28.6% OF THE COURTS WORKLOAD IN DELINQUENT/MISCREANT OFFENSES. (page 43)

Preceding page blank

iii

PREFACE

Probably the most important activity concerning juvenile justice in the state of Kansas during the past year has been the work on a comprehensive revision of the Juvenile Code. The most sweeping change proposed for the legislative session in the spring of 1982 is the splitting of the Juvenile Code into an "offender" section and a "child in need of care" section. The ramifications of this proposed restructuring will be extensive, therefore, work on the Kansas Juvenile Justice Information System has been delayed. It is believed that any information system developed should be based totally on the existing juvenile code after completion of the 1982 legislative session and will be implemented January 1, 1983. All participating parties in the KJJIS believe this delay is appropriate.

The Kansas Statistical Analysis Center remains committed to the implementation of a viable, statewide database on juvenile justice activities in Kansas. Similarly, the linkage of existing "systems" into a comprehensive whole is a goal continued to be supported by KSAC. However, only through continued cooperation of all parties concerned and exhaustive efforts by the participants will this ideal be realized in the near future.

Michael E. Boyer, Director
Kansas Statistical Analysis Center

Preceding page blank

ACKNOWLEDGEMENTS

I would like to take this opportunity to express my sincere appreciation to those people whose efforts have led to this publication of annual juvenile data for the state of Kansas:

To all the clerks, probation staff and judges involved in the process and who have any responsibility for the completion of the source documents;

To the Office of Judicial Administration, especially Howard Schwartz, Judicial Administrator, Mr. John Johnston and Mr. Lowell Long;

To the Department of Social and Rehabilitation Services, especially Mr. James Trast and Ms. Gwen Simpson;

To Ms. Debra A. Smith and Ms. Pamela L. Faust for the clerical support necessary to produce a publication of this nature;

And, finally to Ms. M. Kathleen Bledsoe, who once again served as author for the annual juvenile report, shouldered the majority of the data entry and to whom final responsibility falls for the overall product.

Michael E. Boyer, Director
Kansas Statistical Analysis Center

Preceding page blank

TABLE OF CONTENTS

	Page
HIGHLIGHTS	iii
PREFACE	v
ACKNOWLEDGMENTS	vii
TABLE OF CONTENTS	ix
LIST OF TABLES	xi
LIST OF CHARTS	xiii
INTRODUCTION	xv
KANSAS MAP	xvii
JUDICIAL DISTRICTS BY COUNTY	xviii
SECTION I Juvenile Court Activity In 1980	1
A. Trends in Juvenile Court Referrals	3
B. Reason For Referral	5
C. Manner of Handling	14
D. Seasonality of Referrals	15
E. Demographic Characteristics of Referrals	16
F. Source of Referral	19
G. Care Pending Disposition	21
H. Case Disposition	22
I. Time From Referral To Disposition	22
J. Summary	24
SECTION II Comparative Analysis of Selected Variables	27
SECTION III Delinquent/Miscreant Referrals	39
APPENDICES	
A. Summary of Juvenile Referrals by Judicial Districts	57
B. Estimated Juvenile Population by County	69
C. Glossary of Terms	77
D. Juvenile Court Statistical Card	81

LIST OF TABLES

	Page
Table 1 - Total Referrals, Three Year Trend, 1978-1980	4
Table 2 - Referral Offense by Large Judicial Districts, 1980	7
Table 3 - Legal Category of Offense, 1980	9
Table 4 - Legal Category of Offense, Three Year Trend, 1978-1980	10
Table 5 - Topical Categorization of Referral by Large Judicial Districts, 1980	12
Table 6 - Manner of Handling, 1980	14
Table 7 - Referrals by Month, 1980	16
Table 8 - Referrals by Age, 1980	18
Table 9 - Referrals by Sex, 1980	19
Table 10 - Referrals by Race, 1980	19
Table 11 - Source of Referral, 1980	20
Table 12 - Care Pending Disposition, 1980	21
Table 13 - Case Disposition, 1980	23
Table 14 - Time Elapsed Between Referral and Disposition by Large Judicial District	24
Table 15 - Race of Offender by Sex, 1980	27
Table 16 - Referrals by Sex, Three Year Trend, 1978-1980	28
Table 17 - Referrals by Race, Three Year Trend, 1978-1980 ...	29
Table 18 - Category of Offense by Sex, 1980	30
Table 19 - Category of Offense by Race, 1980	30
Table 20 - Category of Offense by Manner of Handling, 1980 ..	31
Table 21 - Manner of Handling by Sex, 1980	31
Table 22 - Manner of Handling by Race, 1980	32
Table 23 - Disposition by Manner of Handling, 1980	33

Table 24 - Disposition by Manner of Handling, 1980	34
Table 25 - Disposition by Sex, 1980	35
Table 26 - Disposition by Race, 1980	36
Table 27 - Time Elapsed Between Referral and Disposition by Category of Offense	37
Table 28 - Total Delinquent/Miscreant Referrals, Three Year Trend, 1978-1980	41
Table 29 - Reason Referred by Sex and Race, 1980	43
Table 30 - Reason Referred by Age, 1980	44
Table 31 - Reason Referred by Month, 1980	45
Table 32 - Reason Referred by Time Elapsed Between Referral and Disposition, 1980	46
Table 33 - Reason Referred by Manner of Handling, 1980	48
Table 34 - Manner of Handling by Sex and Race, 1980	49
Table 35 - Manner of Handling by Age, 1980	49
Table 36 - Care Pending Disposition by Race and Age, 1980	50
Table 37 - Care Pending Disposition by Age, 1980	51
Table 38 - Reason Referred by Disposition, 1980	52
Table 39 - Disposition by Sex and Race, 1980	54
Table 40 - Disposition by Age, 1980	55

LIST OF CHARTS

	Page
Chart 1 - State of Kansas Judicial Districts	xvii
Chart 2 - Total Juvenile Referrals, 1960-1980	3
Chart 3 - Total Referrals Three Year Trend, 1978-1980	5
Chart 4 - Legal Category of Offense Three Year Trend, 1978-1980	11
Chart 5 - Topical Categorization of Offenses Three Year Trend, 1978-1980	13
Chart 6 - Manner of Handling With And Without Petition Three Year Trend 1978-1980	15
Chart 7 - Referrals By Month Three Year Trend, 1978-1980	17

INTRODUCTION

The data contained in this publication represents juvenile activity in the district court system in Kansas for the calendar year 1980. The form found in Appendix D, the Juvenile Court Statistical Card, serves as the source document for this data. As in prior years, input was received from all 105 Kansas counties for the 1980 report.

The data collection effort for this publication is a coordinated effort between the office of Judicial Administrator, the Department of Social Rehabilitation Services and the Kansas Statistical Analysis Center. There is every indication this cooperative effort should continue well into the future yielding continued benefits for the entire juvenile justice system.

There are two important changes in this 1980 report. Here-
tofore, data has always been presented by county; however, as Kansas has supported a unified court system since 1977, the report has been changed to reflect the judicial district structure. While county data is still available, the primary method of presentation is by district.

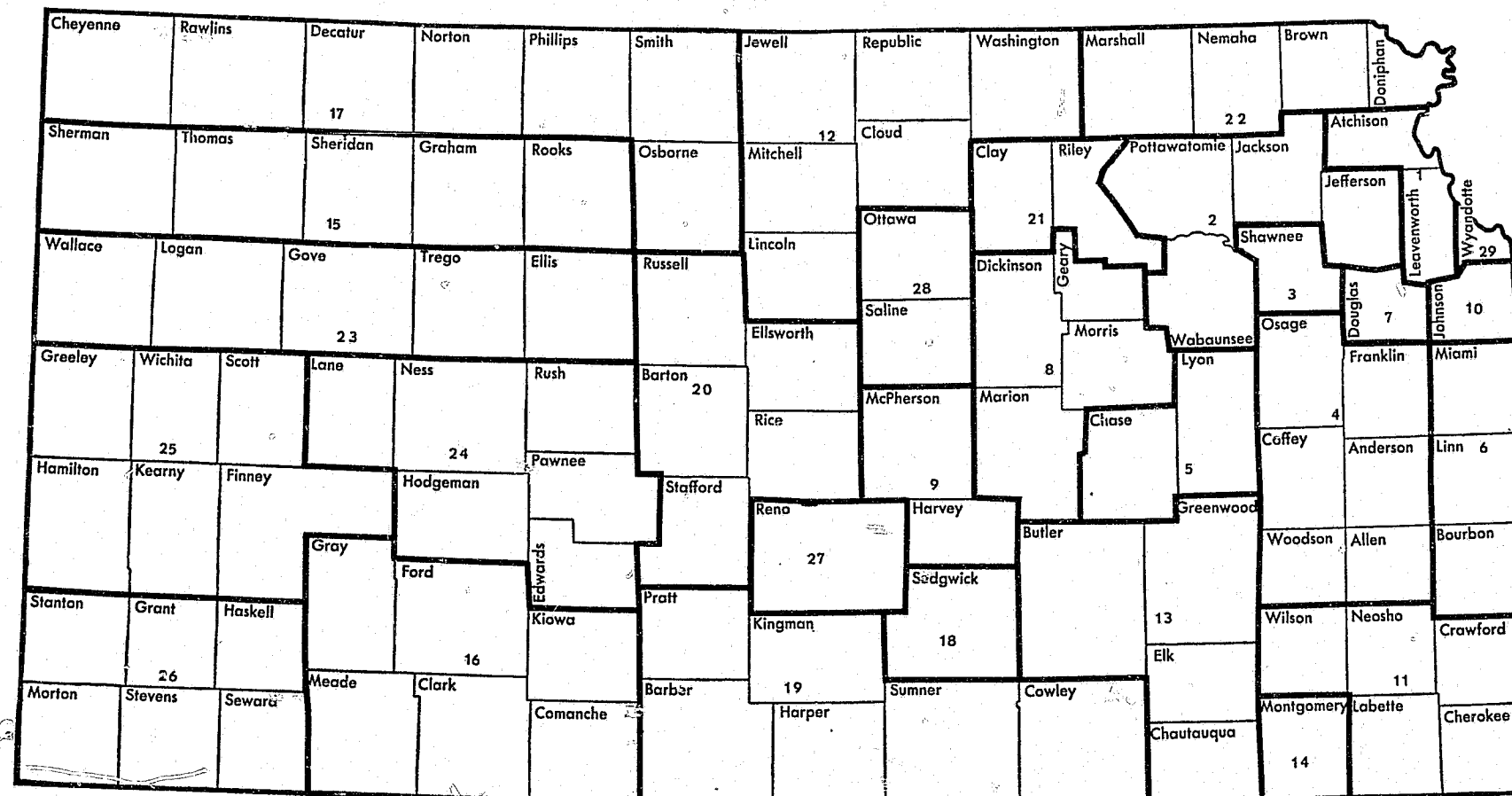
Secondly, due to legislative and public concern over the issue of delinquent/miscreant offenders, an entire section has been created to examine these referrals. This replaces the status offender section in previous issues.

As in the past, the issue of "missing information" is of great concern. While the situation has improved considerably since in-house maintenance and processing of the database has taken place, holes still exist. A concentrated effort is made to complete all input documents received by Kansas Statistical Analysis Center. In many cases, the data is simply not available. In other instances procedural problems mitigate totally complete data.

Any questions, criticisms or other reactions are greatly appreciated concerning either form or content and will be received as constructive for future publications. Please address any comments to:

Michael E. Boyer, Director
Kansas Statistical Analysis Center
Governor's Committee on Criminal
Administration
503 Kansas Avenue, Second Floor
Topeka, Kansas 66603
(913/296-3066)

CHART 1
STATE OF KANSAS
JUDICIAL DISTRICTS



KANSAS JUDICIAL DISTRICTS
BY COUNTY AND CODE

Judicial District 1
Atchison 003
Leavenworth 052

Judicial District 2
Jackson 043
Jefferson 044
Pottawatomie 075
Wabaunsee 099

Judicial District 3
Shawnee 089

Judicial District 4
Allen 001
Anderson 002
Coffey 016
Franklin 030
Osage 070
Woodson 104

Judicial District 5
Chase 009
Lyon 056

Judicial District 6
Bourbon 006
Linn 054
Miami 061

Judicial District 7
Douglas 023

Judicial District 8
Dickinson 021
Geary 031
Marion 057
Morris 064

Judicial District 9
Harvey 040
McPherson 059

Judicial District 10
Johnson 046

Judicial District 11
Cherokee 011
Crawford 019
Labette 050
Neosho 067
Wilson 103

Judicial District 12
Cloud 015
Jewell 045
Lincoln 053
Mitchell 062
Republic 079
Washington 101

Judicial District 13
Butler 008
Chautauqua 010
Elk 025
Greenwood 037

Judicial District 14
Montgomery 063

Judicial District 15
Graham 033
Rooks 082
Sheridan 090
Sherman 091
Thomas 097

Judicial District 16
Clark 013
Comanche 017
Ford 029
Gray 035
Kiowa 049
Meade 060

Judicial District 17
Cheyenne 012
Decatur 020
Norton 069
Osborne 071
Phillips 074
Rawlins 077
Smith 092

Judicial District 18
Sedgwick 087

Judicial District 19
Barber 004
Cowley 018
Harper 039
Kingman 048
Pratt 076
Sumner 096

Judicial District 20
Barton 005
Ellsworth 027
Rice 080
Russell 084
Stafford 093

Judicial District 21
Clay 014
Riley 081

Judicial District 22
Brown 007
Doniphan 022
Marshall 058
Nemaha 066

Judicial District 23
Ellis 026
Gove 032
Logan 055
Trego 098
Wallace 100

Judicial District 24
Edwards 024
Hodgeman 042
Lane 051
Ness 068
Pawnee 073
Rush 083

Judicial District 25
Finney 028
Greeley 036
Hamilton 038
Kearny 047
Scott 086
Wichita 102

Judicial District 26
Grant 034
Haskell 041
Morton 065
Seward 088
Stanton 094
Stevens 095

Judicial District 27
Reno 078

Judicial District 28
Ottawa 072
Saline 085

Judicial District 29
Wyandotte 105

SECTION I
 Juvenile Court Activity
 in 1980

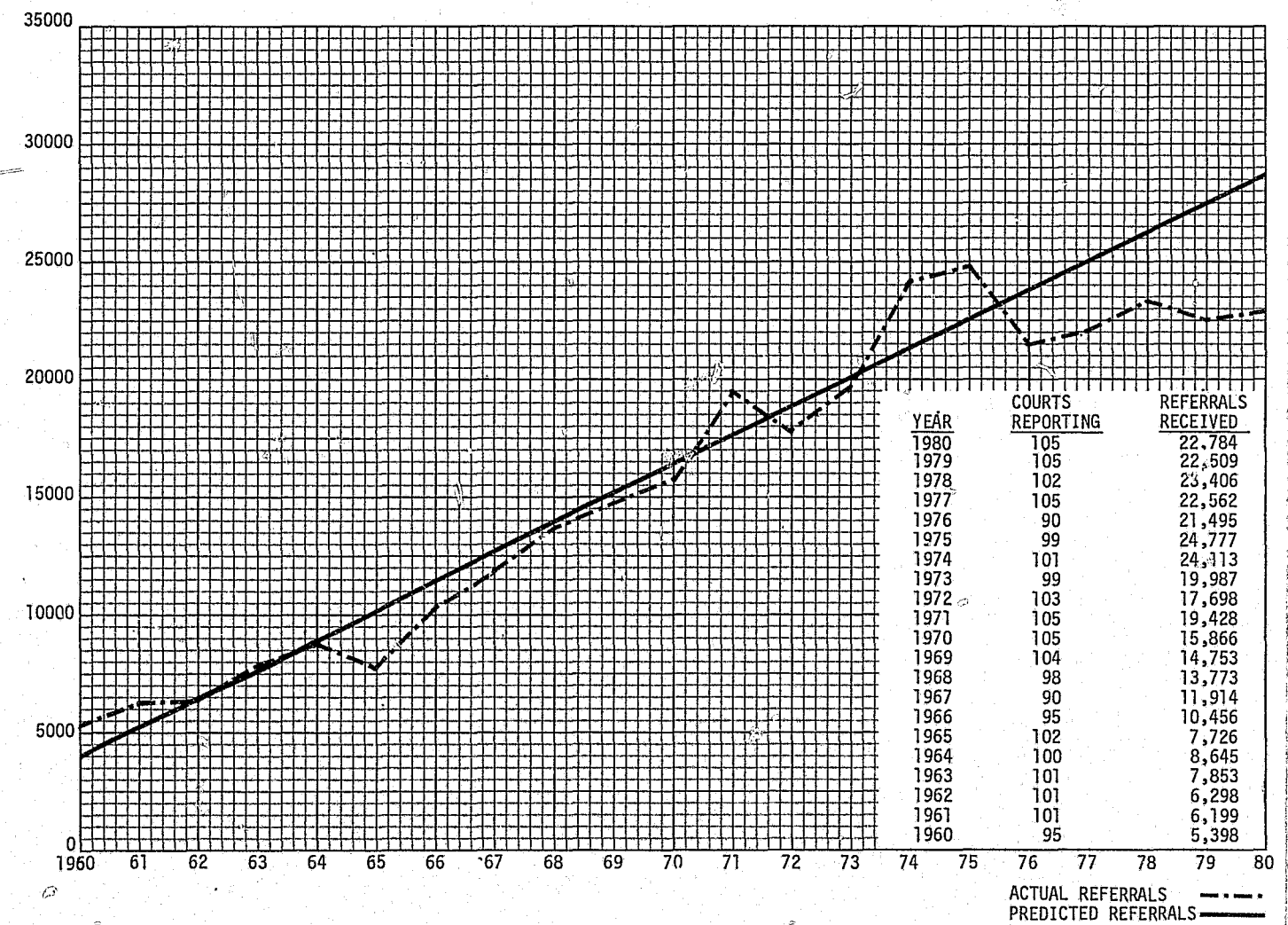
SECTION I

JUVENILE COURT ACTIVITY IN 1980

TRENDS IN JUVENILE COURT REFERRALS

Statistical information was received on 22,784 referrals processed through the juvenile divisions of the Unified Courts in Kansas for calendar 1980. Chart 2 illustrates the trend in juvenile referrals for the twenty year period from 1960 through 1980. The chart shows a steady increase in juvenile referrals

CHART 2
 TOTAL JUVENILE REFERRALS, 1960 - 1980



from 1960 reaching a peak in 1975. The 1980 referral total of 22,784 represents a 1.2% increase from the 1979 total of 22,509, but an 8.0% decrease from the peak of 24,777 referrals in 1975.

The average number of referrals per court has increased slightly from 214 in 1979 to 217 in 1980. This year's tabulation includes data from all 29 judicial districts representing all 105 Kansas counties.

Table 1 exhibits the total number of referrals over a three year time period (1978-80) for the four largest judicial districts (District 3-Shawnee Co., District 10-Johnson Co., District 18-Sedgwick Co., District 29-Wyandotte Co.) and a combined total for the other 26 judicial districts. District 3 shows a 15.4% increase in the total number of referrals between 1978 and 1980, while District 18 shows a 5.1% increase. The table indicates a decline in total referrals for Districts 10 and 29 and for the balance of the state, (All Others) from 1978 to 1980. Chart 3 graphically depicts the increases and decreases in total number of referrals experienced by the judicial districts.

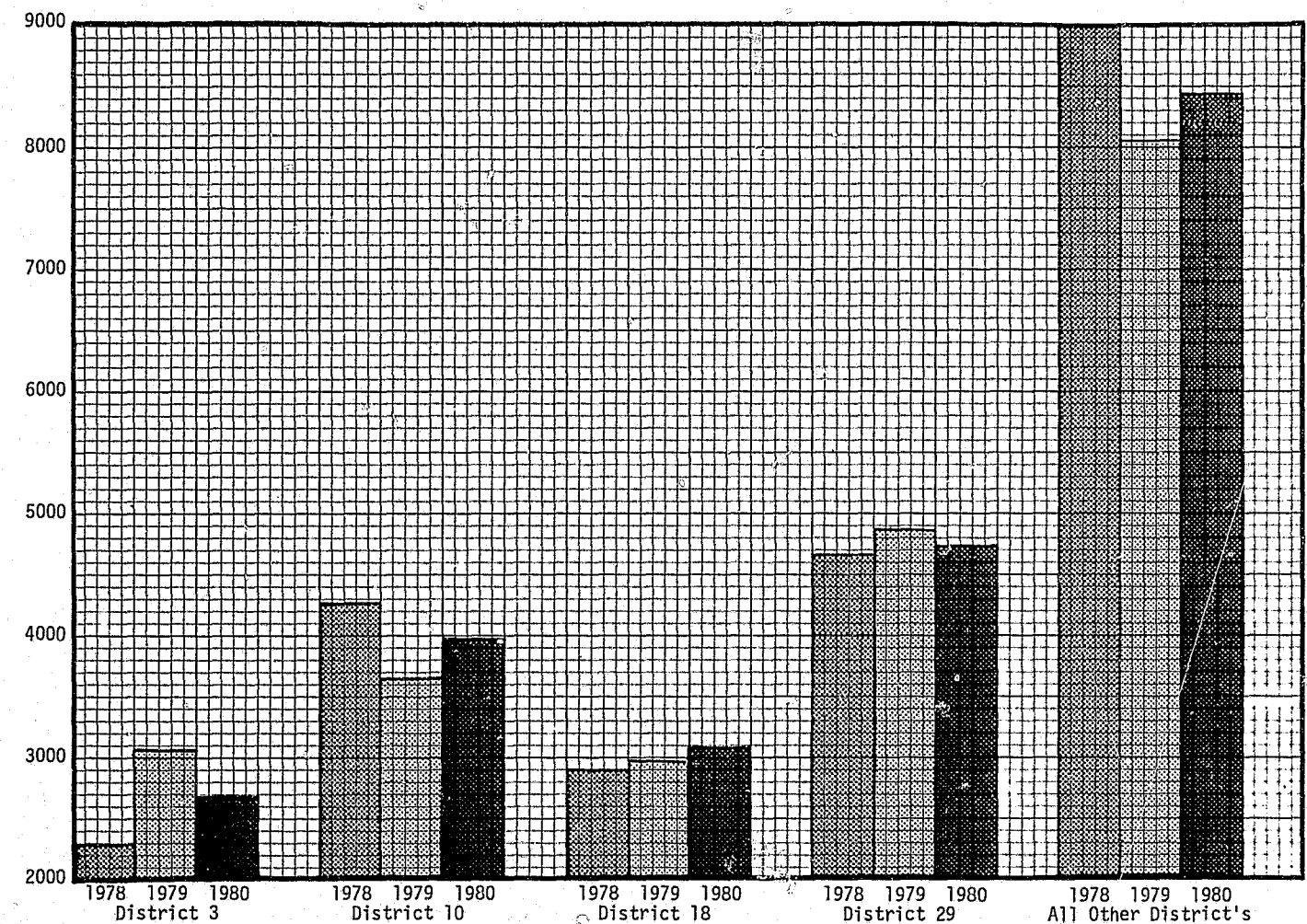
TABLE 1
TOTAL REFERRALS
THREE YEAR TREND
1978 - 1980

DISTRICTS	NUMBER OF REFERRALS 1980	NUMBER OF REFERRALS 1979	PERCENT CHANGE 79 - 80*	NUMBER OF REFERRALS 1978	PERCENT CHANGE 78 - 79*	PERCENT CHANGE 78 vs 80*
District 3	2,693	3,027	-11.0	2,279	+24.7	+15.4
District 10	3,911	3,658	+ 6.5	4,235	-13.6	- 7.7
District 18	3,041	2,930	+ 3.7	2,886	+ 1.5	+ 5.1
District 29	4,702	4,833	- 2.8	4,659	+ 3.6	+ 0.9
All Other Districts	8,437	8,061	+ 4.5	9,283	-13.2	- 9.1
No. of Courts Reporting	105	105		102		
STATE TOTAL	22,784	22,509	+ 1.2	23,342	- 3.7	- 2.4

* All percentages rounded

Examination of the 1980 data shows District 10 had a 6.5% increase in total referrals from 1979, while District 18's referral increase was 3.7%.

CHART 3
TOTAL REFERRALS
THREE YEAR TREND, 1978 - 1980



REASON FOR REFERRAL

Referrals in 1980 were made for the offenses listed in Table 2. The offenses reflect standardized offense descriptions and,

in some respects, are not reflective of Kansas statutes. This table is divided into six sections, based on broad general categories. The first section constitutes the delinquent/miscreant offenses committed by the juvenile offender; these offenses are equivalent to the adult classification of felony and misdemeanor. Of this category, "Larceny-Other" was the most frequent juvenile offense reported (1,894) followed by "Larceny-Shoplifting" (1,601). The second section includes the so-called status offenses. Status offenses are those acts that pertain only to juveniles (e.g. Running Away, Truancy) and for which adults are not arrested. Running Away (2,224) continues to be the most common type of referral in this category. Traffic offenses comprise the third section of referrals. The fourth section contains those referrals designated as Deprived. This category includes offenses committed against a juvenile (e.g. dependency, neglect, abuse, etc.). Special Proceedings, the fifth section, includes petitions to marry, adoption proceedings, custody proceedings, requests to enlist, and requests for emancipation. Referrals for which an offense was unassignable or unavailable are assigned to the "Missing Information" section. Throughout this publication any referral lacking the data element under consideration will be assigned to the "Missing Information" classification for that element.

When comparing offense data for 1980 (Table 2) with similar data for 1979, District 10 exhibits an increase of 8.0% in delinquent/miscreant referrals. District 3 shows an increase of 21.7% in status offenses in 1980 from 1979 with the largest increase

occurring in the "Truancy" category (55.2%). District 29 shows a 25.9% increase in Abuse and All Other Neglect for 1980.

TABLE 2
REFERRAL OFFENSE BY LARGE JUDICIAL DISTRICTS
1980

	TOTAL	DISTRICT 3	DISTRICT 10	DISTRICT 18	DISTRICT 29	ALL OTHER DISTRICTS
Murder and Non-Negligent Manslaughter	8	2	1	0	1	4
Negligent Manslaughter	3	1	0	1	1	0
Forcible Rape	23	2	2	3	5	11
Robbery-Purse Snatching	63	2	1	5	44	11
Robbery-Non-Purse Snatch.	202	11	7	65	0	119
Assault-Aggravated	294	30	14	82	86	82
Assault-Non-Aggravated	598	36	182	60	100	220
Burglary-Breaking and Entering	1,591	112	44	444	289	702
Auto Theft-Unauth. Use	355	33	25	72	0	225
Auto Theft-Other	243	20	87	16	64	56
Larceny-Shoplifting	1,601	300	281	394	234	392
Larceny-Other	1,894	164	557	269	189	715
Weapons	98	8	18	13	26	33
Sex Offenses-Not Rape	83	7	18	11	22	25
Drugs-Narcotic	175	16	2	38	14	105
Drugs-Not Narcotic	594	49	256	105	74	110
Drunkennes	41	3	5	16	0	17
Disorderly Conduct	494	29	82	70	118	195
Vandalism	1,248	73	316	118	136	605
Other	1,219	127	171	248	41	704
Arson	86	9	23	5	0	49
Trespassing	426	87	169	41	50	79
Running Away	2,224	264	719	375	143	723
Truancy	1,332	554	105	41	119	513
Violation of Curfew	275	2	20	24	20	209
Ungovernable Behavior	851	214	135	134	41	327
Alcohol Offense	669	26	258	22	50	313
Other	247	10	128	11	0	98
Drunk Driving	285	39	67	23	14	142
Hit & Run	10	1	0	2	5	2
Reckless Driving	323	12	62	25	12	212
Driving w/o License	172	14	25	34	17	82
All Other Traffic	195	12	17	39	14	113
Abuse	1,275	119	0	80	792	284
All Other Neglect	3,287	299	98	139	1,845	906
Special Proceedings	89	5	16	16	0	52
Miscellaneous Offenses	109	0	0	0	109	0
Missing Information	30	1	0	0	27	2
TOTAL	22,784	2,693	3,911	3,041	4,702	8,437

Legal categories of offenses are summarized in Table 3. Delinquent/miscreant acts accounted for slightly over one-half of the reported court activities in 1980, while status offenses accounted for less than one-quarter of the court's workload. Reported delinquent/miscreant referrals show a 6.2% decline in 1980 from 1979. Status offenses exhibit a slight increase of 2.7%. The contributing factor for the overall 1.2% increase in the 1980 referral rate from 1979 appears to be related to increased reporting in the deprived category. Deprived referrals show the largest increase in 1980 (18.2%).

In a cross-district comparison, considerable variation was found in the different categories. For status offenders District 10 shows the highest proportion of referrals (24.4%) while District 29 had the lowest proportion with 6.7%. District 29 also reported the largest proportion of Deprived referrals, 57.7%, an increase of 25.9% from 1979. References throughout this book will be relative to these broad, legal categories.

Table 4 demonstrates the percent change by legal categorization of the 1978-1980 period. Delinquent/miscreant referrals have increased by only 1.4% from 1978 to 1980 with yearly fluctuations exhibited. Status offenses continue to be about one-quarter of the court's workload, yet show an overall decline of 10.3% in the three year span. Traffic referrals show the largest decrease for this time frame with 56.9%. Deprived referrals manifested the largest increase of 39.6%. This is a steady increase in Deprived referrals over the period. Chart 4 illustrates the yearly fluctuations for the reader.

TABLE 3
LEGAL CATEGORY OF OFFENSE
1980

CATEGORY OF OFFENSE	TOTAL	PERCENT OF TOTAL*	DISTRICT 3	DISTRICT 10	DISTRICT 18	DISTRICT 29	ALL OTHER DISTRICTS
Delinquent-Miscreant Status Offender	11,519	50.6	1,121	2,261	2,076	1,603	4,458
Traffic	5,599	24.6	1,070	1,365	607	373	2,184
Deprived Special Proceedings	968	4.2	78	171	123	62	534
Missing Information	4,564	20.0	418	98	219	2,637	1,192
	91	0.4	5	16	16	0	54
TOTAL	22,784	100.0%	2,693	3,911	3,041	4,702	8,437

* All percentages rounded

TABLE 4

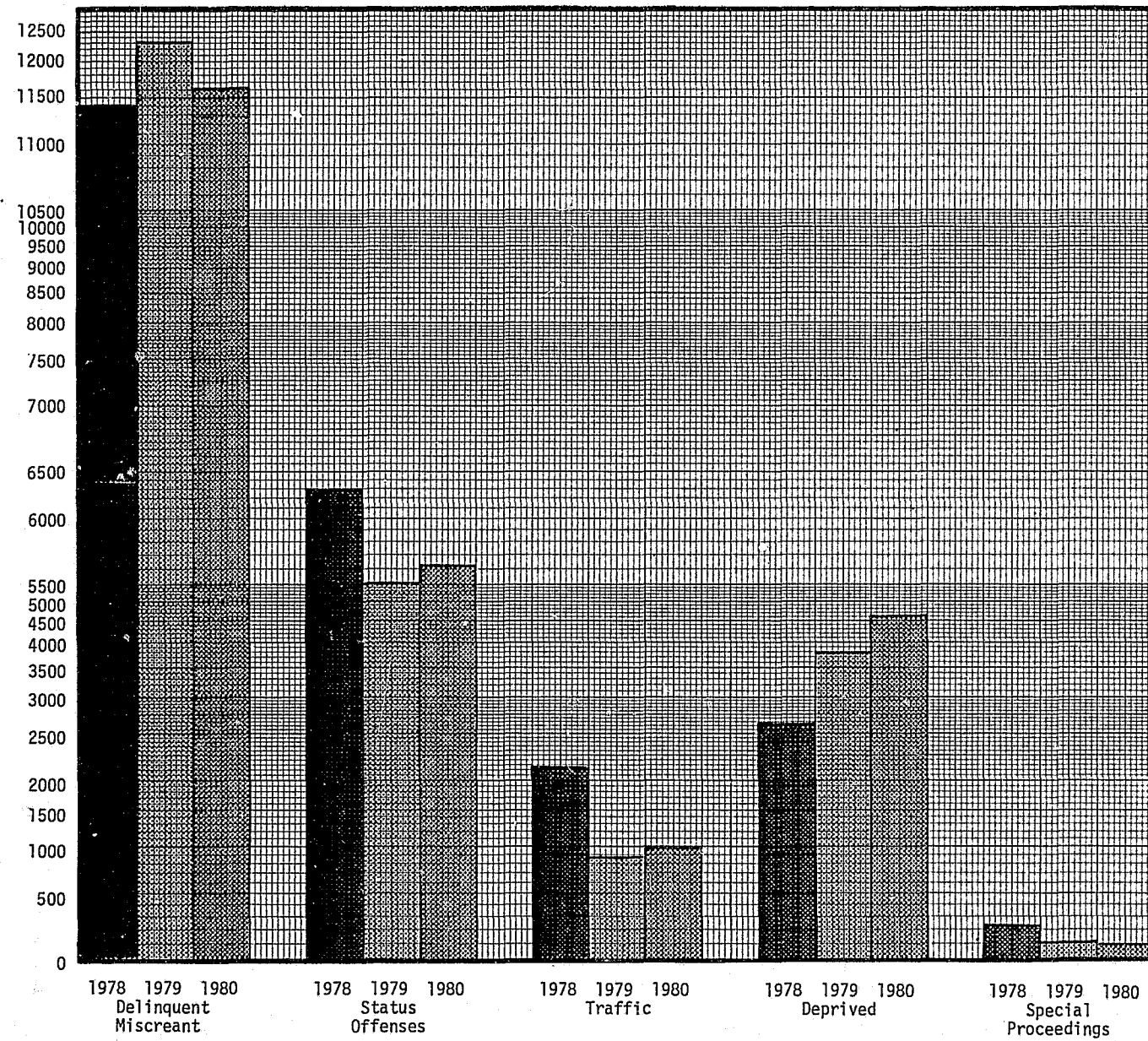
LEGAL CATEGORY OF OFFENSE
THREE YEAR TREND
1978 - 1980

CATEGORY OF OFFENSE	1980 STATE TOTAL	% OF 1980 STATE TOTAL*	1979 STATE TOTAL	% OF 1979 STATE TOTAL*	1978 STATE TOTAL	% OF 1978 STATE TOTAL*	% CHANGE 1978 vs. 1980*
Delinquent - Misdemeanor Status Offenses	11,519	50.6	12,274	54.5	11,362	48.5	+1.4
Traffic	5,599	24.6	5,444	24.2	6,239	26.6	-10.3
Deprived	968	4.2	862	3.8	2,245	9.6	-56.9
Special Proceedings	4,564	20.0	3,734	16.6	2,755	11.8	+39.6
Missing Information	91	0.4	96	0.4	207	0.9	-56.0
TOTAL	43	0.2	99	0.4	598	2.6	
TOTAL	22,784	100.0%	22,509	100.0%	23,406	100.0%	-2.7

* All percentages rounded

10

CHART 4
 LEGAL CATEGORY OF OFFENSE
 THREE YEAR TREND, 1978 - 1980



Offenses listed in the Kansas Criminal Code (K.S.A. 21-101 et. seq.) are classified into topical categories (i.e., Crimes Against Persons, Crimes Against Property, etc.). Table 5 provides the distribution of referral offenses into these larger topical categories. Non-criminal type of referrals (status, traffic, deprived, special) comprised the largest proportion of

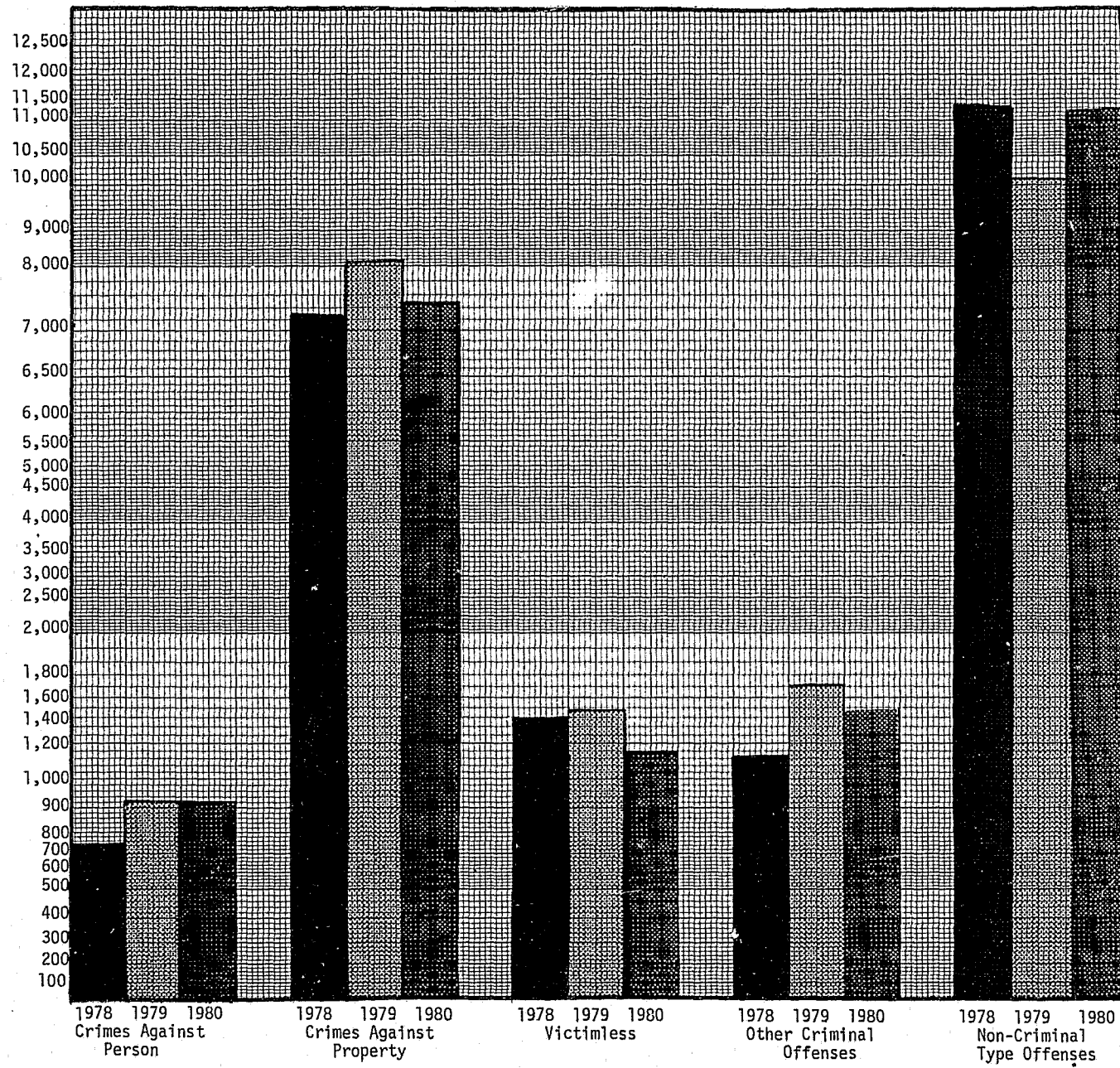
TABLE 5

TOPICAL CATEGORIZATION OF REFERRAL^a BY LARGE JUDICIAL DISTRICTS
1980

	STATE TOTAL	PERCENT OF TOTAL*	DISTRICT 3	DISTRICT 10	DISTRICT 18	DISTRICT ^b 29	ALL OTHER DISTRICTS
Crimes Against Persons	966	4.2	71	198	148	232	317
Murder/Non-Negligent Mansl.	8		2	1	0	1	4
Negligent Manslaughter	3		1	0	1	1	0
Robbery - Purse Snatching	63		2	1	5	44	11
Aggravated Assault	294		30	14	82	86	82
Non-Aggravated Assault	598		36	182	60	100	220
Crimes Against Property	7,646	33.6	809	1,509	1,424	962	2,942
Robbery - Non-Purse Snatching	202		11	7	65	0	119
Burglary	1,591		112	44	444	289	702
Auto Theft	598		53	112	88	64	281
Larceny - Shoplifting	1,601		300	281	394	234	392
Larceny - Other	1,894		164	557	269	189	715
Vandalism	1,248		73	316	118	136	605
Arson	86		9	23	5	0	49
Trespassing	426		87	169	41	50	79
Crimes Against Public Safety							
Weapons	98	0.4	8	18	13	26	33
Sex Offenses	106	0.5	9	20	14	27	36
Rape	23		2	2	3	5	11
Other Sex Offenses	83		7	18	11	22	25
Uniform Controlled Substances	769	3.4	65	258	143	88	215
Drugs Narcotic	175		16	2	38	14	105
Drugs Non-Narcotic	594		49	256	105	74	110
Crimes Against Public Moral							
Disorderly Conduct	494	2.2	29	82	70	118	195
Other Criminal-Type Offenses Not Classifiable	1,441	6.3	130	176	264	150	721
Non Criminal-Type Referrals	11,234	49.3	1,571	1,650	965	3,072	3,976
Missing Information	30	0.1	1	0	0	27	2
TOTAL	22,784	100.0%	2,693	3,911	3,041	4,702	8,437

* All percentages rounded

Chart 5
 TOPICAL CATEGORIZATION OF OFFENSES
 THREE YEAR TREND
 1978 - 1980



the total number of referrals (49.3%). Shoplifting and burglary are the primary Crimes Against Property (45.7%). Nearly 62.0% of Crimes Against Persons referrals are for simple assault. Examination of the data for Uniform Controlled Sub-

stances referrals shows that non-narcotic drug offenses comprised 77.2% of the total for that category. Chart 5 provides the reader a visual interpretation of offenses by category for a three-year trend study.

MANNER OF HANDLING

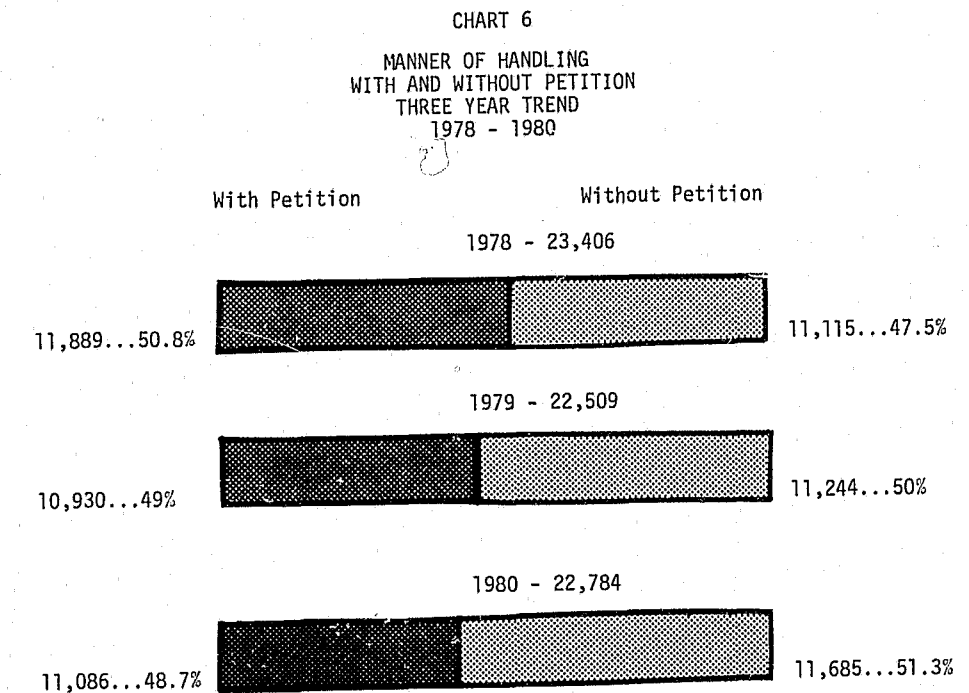
Of primary importance in the handling of a juvenile is the decision whether or not to file a formal petition. When a petition is filed, the youth is formally placed into the juvenile justice system and will become part of the court's activity. Table 6 indicates that 48.7% of the 1980 referrals were handled with a formal petition.

With one exception, the data suggests a preference for informal handling of juvenile referrals in the large districts. District 29 exhibits a marked tendency (68.9%) to handle juvenile referrals informally. Figures indicate, however, a tendency toward formal handling by the balance of the state, as 68% of all referrals were handled with petition.

TABLE 6
MANNER OF HANDLING
1980

MANNER OF HANDLING	TOTAL	DISTRICT 3	DISTRICT 10	DISTRICT 18	DISTRICT 29	ALL OTHER DISTRICTS
Without Petition	11,685	1,623	2,787	1,317	3,239	2,719
With Petition	11,086	1,070	1,122	1,723	1,461	5,710
Missing Information	13	0	2	1	2	8
TOTAL	22,784	2,693	3,911	3,041	4,702	8,437

Chart 6 gives the reader a pictorial view of Manner of Handling for a three-year period (1978-80). The graph indicates only a slight variation in the number of referrals handled with or without petition across the state.



SEASONALITY OF REFERRALS

Table 7 provides a monthly breakdown of referrals for 1980. The 1980 data fails to demonstrate any clear peak in referrals. Chart 7 shows that March and October were peak periods in 1978 and 1979, but 1980 data does not necessarily indicate a continuation of this trend. However, December continues to be the lowest month for juvenile activity.

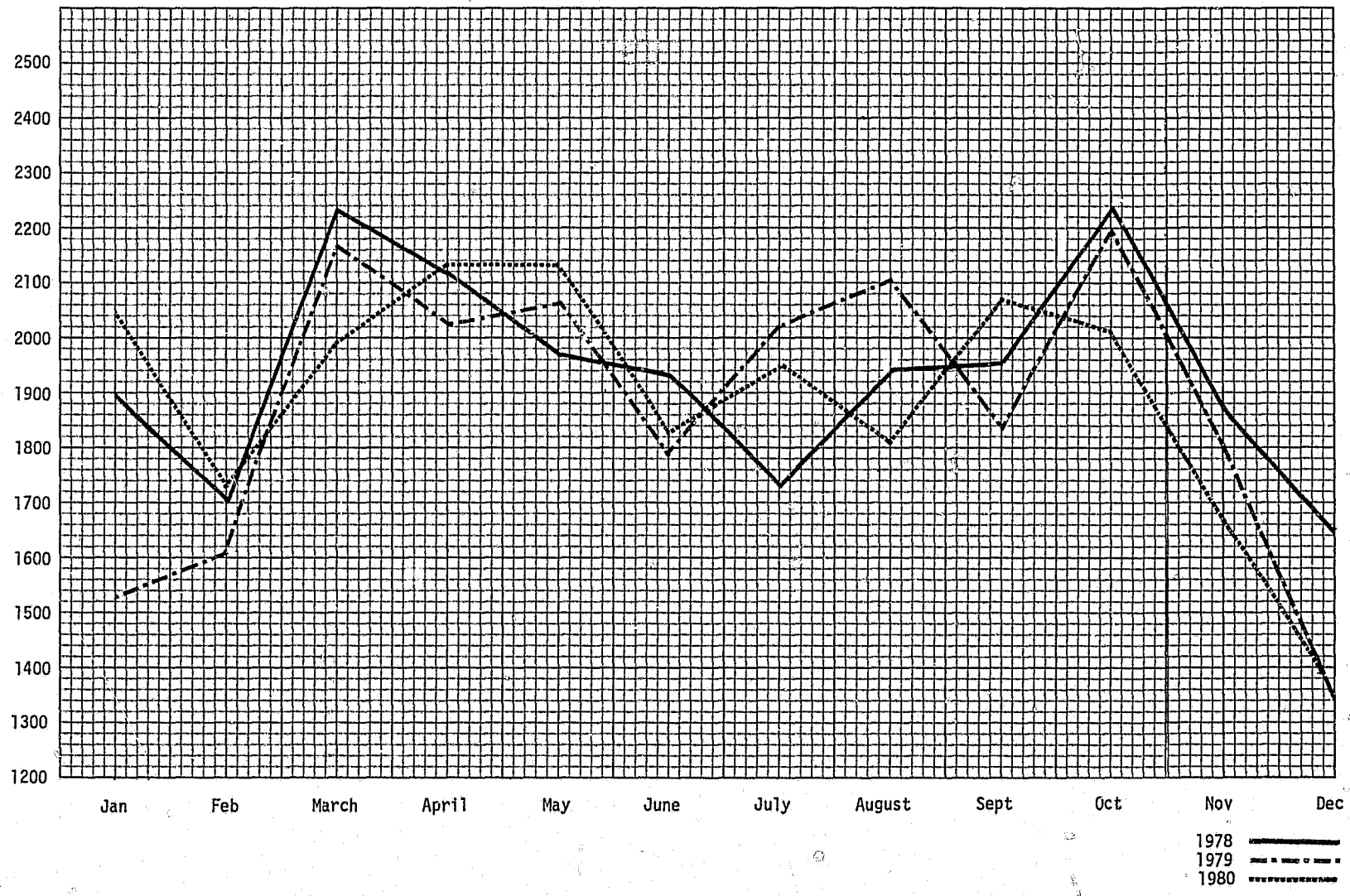
TABLE 7
REFERRALS BY MONTH
1980

MONTH	TOTAL	DISTRICT 3	DISTRICT 10	DISTRICT 18	DISTRICT 29	ALL OTHER DISTRICTS
January	2,046	263	293	202	487	801
February	1,722	235	292	216	366	613
March	1,992	200	399	295	353	745
April	2,136	242	386	256	477	775
May	2,128	198	383	264	463	820
June	1,838	170	370	248	379	671
July	1,958	179	366	279	381	753
August	1,811	149	313	280	380	689
September	2,064	238	330	265	517	714
October	2,010	311	298	303	282	816
November	1,673	272	223	254	393	531
December	1,395	234	255	176	224	506
Missing Info.	11	2	3	3	0	3
TOTAL	22,784	2,693	3,911	3,041	4,702	8,437

DEMOGRAPHIC CHARACTERISTICS OF REFERRALS

The three primary demographic variables in the current data base are age, sex, and race. From a program planning perspective, knowledge of demographic variables should allow for crime effective allocation of limited resources across the state. Table 8 shows the distribution of referrals based on age. The data shows the average age of youths referred in 1980 to be 15.2 years old. The data indicates that youths from 15 to 17 years old comprise the largest group referred to the courts (57.9%). Also indicated is an increase in the number of 17 year old's referred to the court in 1980 (2.5%) from 1979.

CHART 7
REFERRALS BY MONTH
Three Year Trend 1978 - 1980



17

TABLE 8
REFERRALS BY AGE
1980

AGE	TOTAL	DISTRICT 3	DISTRICT 10	DISTRICT 18	DISTRICT 29	ALL OTHER DISTRICTS	PERCENT OF TOTAL*
0	501	32	6	49	302	112	2.2
1	370	31	8	14	225	92	1.6
2	352	37	11	21	204	79	1.5
3	276	34	9	7	152	74	1.2
4	257	31	7	15	139	65	1.1
5	293	37	9	11	160	76	1.3
6	271	42	9	7	150	63	1.2
7	288	29	12	2	147	98	1.3
8	323	42	24	5	149	103	1.4
9	400	57	35	15	160	133	1.8
10	466	48	43	37	175	163	2.0
11	586	65	76	57	197	191	2.6
12	910	110	154	129	201	316	4.0
13	1,585	221	257	266	295	546	7.0
14	2,585	362	498	421	411	893	11.3
15	3,952	602	746	574	496	1,534	17.3
16	4,500	446	962	675	556	1,861	19.8
17	4,742	449	1,032	732	583	1,946	20.8
18	54	11	7	2	0	34	0.2
Missing Info.	73	7	6	2	0	58	0.3
TOTAL	22,784	2,693	3,911	3,041	4,702	8,437	100.0%

* All percentages rounded

Table 9 presents the distribution of juvenile referrals by sex. Male offenders continue to constitute the greatest number of youths referred to the court (67.5%). There were 15,597 males referred to the court in 1980 and 15,579 in 1979; this is a .1% increase in 1980 from 1979.

While in contrast, there were 7,161 females referred to the court in 1980 and 6,867 referred in 1979. This figure represents a 4.1% increase in 1980 from 1979. This percentage distribution for total number of referrals was approximated across all localities.

TABLE 9
REFERRALS BY SEX
1980

SEX	TOTAL	DISTRICT 3	DISTRICT 10	DISTRICT 18	DISTRICT 29	ALL OTHER DISTRICTS
Male	15,597	1,646	2,860	2,196	2,850	6,045
Female	7,161	1,041	1,049	844	1,849	2,378
Missing Info.	26	6	2	1	3	14
TOTAL	22,784	2,693	3,911	3,041	4,702	8,437

The distribution of referrals by race is presented in Table 10. The figures indicate that 76.3% of all referrals in 1980 were white. The large percentage of "Missing" entries (6.3%) suggests that reporting of race may be problematic for some agencies.

TABLE 10
REFERRALS BY RACE
1980

RACE	TOTAL	DISTRICT 3	DISTRICT 10	DISTRICT 18	DISTRICT 29	ALL OTHER DISTRICTS	PERCENT OF TOTAL*
White	17,378	1,993	3,811	1,196	2,766	7,612	76.3
Black	3,315	566	93	346	1,752	588	14.5
Indian	217	45	0	13	104	55	1.0
Other	437	87	6	80	79	185	1.9
Missing Info.	1,437	2	1	1,406**	1	27	6.3
TOTAL	22,784	2,693	3,911	3,041	4,702	8,437	100.0%

* All percentages rounded

** Reader advised to use caution in interpreting percent totals due to large amount of missing information from District 18.

SOURCE OF REFERRAL

Analysis of the data supplied on source of referral shows that law enforcement agencies were responsible for 68.2% of the total number to the court in 1980 (Table 11). Referrals from a law enforcement agency varied across localities, from 90.4% of referrals in District 10 to 40.9% of the total referrals in Dis-

TABLE 11
SOURCE OF REFERRAL
1980

SOURCE OF REFERRAL	TOTAL	DISTRICT 3	DISTRICT 10	DISTRICT 18	DISTRICT 29	ALL OTHER DISTRICTS	PERCENT OF TOTAL*
Law Enforcement Agency	15,542	1,699	3,537	2,510	1,925	5,871	68.2
School Department	1,444	599	154	27	108	556	6.3
Social Agency	3,437	109	94	227	2,317	690	15.1
Probation Officer	135	9	8	7	29	85	0.6
Parent or Relative	1,149	192	84	203	60	610	5.0
Other Court	168	10	17	11	18	112	0.7
Other Source	865	70	13	53	241	488	3.8
Missing Information	44	5	4	3	4	28	0.2
TOTAL	22,784	2,693	3,911	3,041	4,702	8,437	100.0%

* All percentages rounded

trict 29. Referrals by social agencies in 1980 show a steady increase from 1979 (30.6%). District 29 showed the highest referral rate from a social agency (49.3%) compared to the referral rate from District 18 of .9%. As the state total for social agency referrals is 15.1%, the data indicates there is a broad division in the number of referrals provided by local social agencies.

CARE PENDING DISPOSITION

Table 12 shows out of home care provided juveniles prior to case disposition. For 1980 only 18% of the total number of juveniles referred were provided some form of temporary out of home care. This distribution was approximated across all localities, but ranged from 8.6% for District 10 to 22.9% of referrals in the balance of state portion of the data.

TABLE 12
CARE PENDING DISPOSITION
1980

CARE PENDING DISPOSITION	TOTAL	DISTRICT 3	DISTRICT 10	DISTRICT 18	DISTRICT 29	ALL OTHER DISTRICTS	PERCENT OF TOTAL*
No Detention Overnight	18,680	2,121	3,576	2,507	3,970	6,506	82.0
Detention in Jail	1,139	17	15	3	176	928	5.0
Detention Home	1,376	326	314	331	222	183	6.0
Foster Family Home	1,050	180	3	173	214	480	4.6
Other Placement	498	49	1	23	119	306	2.2
Missing Information	41	0	2	4	1	34	0.2
TOTAL	22,784	2,693	3,911	3,041	4,702	8,437	100.0%

* All percentages rounded

CASE DISPOSITION

The manner in which a referral is resolved by the court is presented in Table 13. Of the 22,784 referrals in 1980, 138 juveniles were waived to adult court (.6%); District 18 accounted for 28.4% (21) of these waivers. Cases that were not substantiated or dismissed and warned comprised 39.2% (8,928) of the court's work load. Considerable variation was found in the percentages of cases dismissed across the reporting localities. Data submitted from District 10 indicated that 65.9% of all referrals were dismissed. Probation was the disposition in 17.9% of the total number of cases, and this figure appears to be approximated across all localities.

"Referred Elsewhere" and "Diversion" accounts for disposition of over one-fourth of the court's workload. Data indicates that District 29 disposed of 51.9% of its referrals in this manner. Of the total number of youths referred in 1980, 7.7% were confined to some type of institutional care.

TIME FROM REFERRAL TO DISPOSITION

The length of time between the date of referral and final disposition of the referral is computed from two data elements, the date of referral and the date of disposition.

Examination of the data shows that 40.1% (9,128) were disposed of in ten days or less. This percentage rate is approximate for all localities across the state with the exception of District 29, which has a disposal rate of 65.7% within ten days or less.

TABLE 13
CASE DISPOSITION
1980

DISPOSITION	TOTAL	PERCENT OF TOTAL*	DISTRICT 3	DISTRICT 10	DISTRICT 18	DISTRICT 29	ALL OTHER DISTRICTS
Waived to Criminal Court	138	0.6	12	19	21	13	73
NOT SUBSTANTIATED Dismissed	3,299	14.5	420	180	1,119	544	1,036
COMPLAINT SUBSTANTIATED							
Dismissed - Warned	5,629	24.7	667	2,397	127	902	1,536
Held Open	246	1.1	4	54	8	13	167
Probation	4,071	17.9	337	666	500	273	2,295
Referred Elsewhere	4,806	21.1	532	367	361	2,441	1,105
Runaway Returned	414	1.8	75	5	5	82	247
Other	711	3.1	233	6	11	0	461
Restitution	247	1.1	4	3	46	0	194
Diversion	1,117	4.9	295	1	570	0	251
CUSTODY TO							
Public Inst. Delinquents	244	1.1	26	62	8	47	101
Other Public Institution	60	0.3	15	0	8	1	36
Public Agency Institution	1,417	6.2	61	125	239	292	700
Private Agency/Institution	37	0.2	5	11	12	1	8
Individual	213	0.9	6	0	4	47	156
Other	93	0.4	1	15	2	43	32
Inapplicable	42	0.2	0	0	0	3	39
Missing Information	0	0	0	0	0	0	0
TOTAL	22,784	100.0%	2,693	3,911	3,041	4,702	8,437

* All percentages rounded

23

TABLE 14

TIME ELAPSED BETWEEN REFERRAL AND DISPOSITION
BY LARGE JUDICIAL DISTRICTS

TIME BETWEEN REFERRAL AND DISPOSITION	TOTAL	DISTRICT 3	DISTRICT 10	DISTRICT 18	DISTRICT 29	ALL OTHER DISTRICTS	PERCENT OF TOTAL*
10 Days or Less	9,128	1,253	818	1,518	3,041	2,498	40.1
11 - 20 Days	3,530	371	489	480	394	1,796	15.5
21 - 30 Days	2,038	196	378	282	211	971	8.9
31 - 40 Days	1,497	204	321	203	118	651	6.6
41 - 50 Days	1,210	118	286	158	131	517	5.3
51 - 75 Days	1,961	214	570	182	314	681	8.6
76 - 100 Days	1,169	103	375	86	179	426	5.1
101 - 150 Days	1,020	96	311	56	155	402	4.5
151 - 200 Days	446	41	161	21	39	184	1.9
201 - 250 Days	228	22	98	11	18	79	1.0
251 - 300 Days	120	11	39	7	2	61	0.5
301 + Days	173	30	31	21	6	85	0.8
Missing Information	264	34	34	16	94	86	1.2
TOTAL	22,784	2,693	3,911	3,041	4,702	8,437	100.0%

* All percentages rounded

SUMMARY

The purpose of this section has been to present each variable from the current input document of the Kansas Juvenile Justice Information System (KJJIS) and to provide some narrative and pictorial interpretation of the data submitted for 1980. While problems do exist in the current data collection system, and caution is advised in drawing conclusions from the data in these areas, this data base does represent the best source of social-demographic information concerning activity through the juvenile justice systems in Kansas.

SECTION II

Comparative Analysis of
Selected Variables

SECTION II

COMPARATIVE ANALYSIS OF SELECTED VARIABLES

The purpose of this section is to examine the interrelationship of selected variables from the 1980 data on Kansas juvenile referrals. The emphasis is on comparisons generally requested or that indicate some noteworthy occurrence.

Table 15 presents Race by Sex for 1980 referrals. The data indicate that white males account for 55.3% of the total number of juveniles referred to the court. Black males accounted for 10.3% of the total, and Indian males represented .5% of the total figure. In addition, white females constituted 26.1% of all referrals; black females represented 5.2%; and Indian females accounted for .4% of the total number of referrals. The percentage rate of 26.1% for white female referrals is an increase of 4.3% in 1980 from 1979.

Careful consideration should be given to the amount of "Missing Information" (6.4%) before any conclusions are drawn or interpretations of these two variables are made. In addition, a more precise breakdown of the category "Other" needs to be made (Oriental, Mexican American, etc.) to produce a more useful breakdown of referrals.

TABLE 15
RACE OF OFFENDER BY SEX
1980

RACE	MALE	FEMALE	TOTAL
White	11,803	5,569	17,372
Black	2,198	1,115	3,313
Indian	117	97	214
Other	300	136	436
TOTAL	14,418	6,917	21,335

Missing Information - 1,448

Table 16 shows the number of male and female juveniles referred for a three year period. This table shows a slow, steady increase in the number of females referred over a three year span (1.4%).

TABLE 16
REFERRALS BY SEX
THREE YEAR TREND
1978 - 1980

SEX	STATE TOTAL 1980	STATE TOTAL 1979	% CHANGE 79-80	STATE TOTAL 1978	% CHANGE 78-79	% CHANGE 78 vs 80
Male	15,597	15,579	+ 0.1	16,089	- 3.3	- 3.2
Female	7,161	6,867	+ 4.1	7,060	- 2.8	+ 1.4
Missing Information	26	63		257		
TOTAL	22,784	22,509	+ 1.2	23,406	- 4.0	- 2.7

*All Percentages Rounded

Table 17, Referrals by Race, Three-Year Trend, depicts total number of referrals of juveniles referred in this category. The study shows a slight (.7%) increase in white referrals in 1980 from 1979 and a decrease of 6.2% for the trend period. However, the study shows an overall increase in black youth referrals (21.5%) in 1980 from 1978, and a 49.8% increase in Indian youths referred to the court in 1980 from 1978. Again, we ask the reader to use caution in interpreting this variable due to the "Missing Information" factor.

TABLE 17
REFERRALS BY RACE
THREE YEAR TREND
1978 - 1980

RACE	STATE TOTAL 1980	STATE TOTAL 1979	% CHANGE 79-80	STATE TOTAL 1978	% CHANGE 78-79	% CHANGE 78 vs 80
White	17,378	17,262	+ 0.7	18,451	- 6.9	- 6.2
Black	3,315	3,218	+ 3.0	2,602	+ 19.1	+ 21.5
Indian	217	141	+ 35.0	109	+ 22.7	+ 49.8
Other	437	500	- 14.4	440	+ 12.0	- 0.7
Missing Information	1,437**	1,388		1,804		
TOTAL	22,784	22,509	+ 1.2	23,406	- 4.0	- 2.7

* All Percentages Rounded

** Reader advised to use caution in interpreting percent totals due to large amount of missing information in race categories.

The relationship of Category of Offense to Sex is presented in Table 18. Of the male referrals, 60.2% were for delinquent/miscreant offenses, which is a decrease of 7.1% in 1980 from 1979. Males referred for status offenses in 1980 constitute 18.9% of the total number males referred, which is an increase of 5.2% in 1980 from 1979. The most significant change occurs in the deprived category where 2,266 males were referred in 1980, which represents an increase of 19.2% from 1979's referral total of 1,831.

By contrast, analysis of female referrals showed that 28.3% of total referrals were for delinquent/miscreant offenses, and 37.0% were for status offenses. Again, a significant difference is noted in female youths referred as deprived in 1980 (2,292) from 1979 (1,880). This is an increase of 17.9% in 1980 from 1979.

TABLE 18
CATEGORY OF OFFENSE BY SEX
1980

CATEGORY OF OFFENSE	MALE	FEMALE	TOTAL
Delinquent-Miscreant	9,376	2,021	11,397
Status Offender	2,945	2,647	5,592
Traffic	872	96	968
Deprived	2,266	2,292	4,558
Special Proceedings	47	44	91
Other	64	45	109
TOTAL	15,570	7,145	22,715

Missing Information - 68

Table 19 provides data showing Category of Offense by Race. For white referrals, 47.6% were made for delinquent/miscreant offenses, 28.3% were for status offenses, and 18.2% for deprived. Similarly, 48.9% of black referrals were for delinquent/miscreant acts and only 14.1% were referred for status offenses. A higher percentage of black youths are referred in the deprived category (34.7%) than are white youths. Data for Indian referrals show that delinquent/miscreant offenses accounted for 30.0% of the total, status offenses constitute 18.4%, and deprived cases account for the highest incidence of referrals (50.2%). It should again be noted that due to a sizable number of "Missing" cases, caution should be exercised in drawing conclusions based solely on this data.

TABLE 19
CATEGORY OF OFFENSE BY RACE
1980

CATEGORY OF OFFENSE	WHITE	BLACK	INDIAN	OTHER	TOTAL
Delinquent-Miscreant	8,251	1,616	65	177	10,109
Status Offender	4,917	465	40	99	5,521
Traffic	867	35	1	16	919
Deprived	3,158	1,146	109	143	4,556
Special Proceedings	80	7	1	2	90
Other	75	33	1	0	109
TOTAL	17,348	3,302	217	437	21,304

Missing Information - 1,479

The manner in which a referral is handled in relationship to the category of offense is shown in Table 20. Examination indicates that 58.0% of the delinquent/miscreant referrals are dealt with by formal petition, while in contrast, 66.4% of youths referred for status offenses were handled without petition. Data also indicate a preference by the court to handle deprived referrals in an informal manner (60.0%).

TABLE 20
CATEGORY OF OFFENSE BY MANNER OF HANDLING
1980

CATEGORY OF OFFENSE	TOTAL	WITHOUT PETITION	WITH PETITION
Delinquent-Miscreant	11,401	4,787	6,614
Status Offender	5,595	3,715	1,880
Traffic	968	295	673
Deprived	4,563	2,738	1,825
Special Proceedings	91	41	50
Other	109	87	22
TOTAL	22,727	11,663	11,064

Missing Information - 56

Data reported for Manner of Handling by Sex (Table 21) shows 52.6% of male referrals are handled with formal petition; while 40.2% of the female referrals are handled formally. Further examination shows that of the total referrals handled with formal petition, 74.0% were male.

TABLE 21
MANNER OF HANDLING BY SEX
1980

MANNER OF HANDLING	MALE	FEMALE	TOTAL
Without Petition	7,390	4,283	11,673
With Petition	8,197	2,874	11,071
TOTAL	15,587	7,157	22,744

Missing Information - 39

Table 22 provides figures on the interrelationships of Manner of Handling and Race. Examination of this data shows there is no significant difference in manner of handling by racial groups. On the average, 54.5% of the total number of referrals are handled with a formal petition. However, the reader is cautioned to observe the high number of missing cases (6.4%) and interpret the table accordingly.

TABLE 22
MANNER OF HANDLING BY RACE
1980

MANNER OF HANDLING	WHITE	BLACK	INDIAN	OTHER	TOTAL
Without Petition	9,305	1,958	129	239	11,631
With Petition	8,061	1,355	88	198	9,702
TOTAL	17,366	3,313	217	437	21,333

Missing Information - 1,450

Table 23 outlines Disposition by Category of Offense. In the delinquent/miscreant offense category 44.5% (5,077) of the 11,409 juveniles referred were dismissed with a warning or as unproved. Probation was given in 25.8% of the cases. 12.6% were referred elsewhere or diverted into another program, and 8.9% were placed in a custody type situation. Fifty-two and one half percent of all status offenses were dismissed as unproved or warned by the court; 13.5% were placed on probation; 15.1% were referred elsewhere or placed in diversion programs, and 7.2% of the total number of status offenders were confined in some way. About one-third (31.3%) of the traffic offenses referred to the court were dismissed in 1980 and 34% were placed on

probation. Of the deprived cases referred to the court in 1980, only 11.7% were dismissed as unproved or warned, 76.7% of these cases were referred elsewhere for aid or consultation, and in only 6.5% of these cases did the court find it necessary to award custody to a public agency (generally SRS).

TABLE 23
DISPOSITION BY CATEGORY OF OFFENSE
1980

DISPOSITION	TOTAL	DELINQUENT/ MISCREANT	STATUS OFFENSE	TRAFFIC	DEPRIVED	SPECIAL PROCEEDINGS	OTHER
Waived to Criminal Court	138	126	10	1	1	0	0
NOT SUBSTANTIATED Dismissed	3,288	2,045	706	126	388	4	19
COMPLAINT SUBSTANTIATED Dismissed-Warned	5,622	3,032	2,235	177	144	3	31
Held Open	246	124	79	12	29	0	2
Probation	4,058	2,948	755	329	13	12	1
Referred Elsewhere	4,800	613	599	51	3,499	28	10
Runaway Returned	414	39	336	0	3	0	36
Other	710	438	161	84	25	2	0
Restitution	247	104	24	118	1	0	0
Diversion	1,116	820	244	42	10	0	0
CUSTODY TO Public Inst. Delinquents	243	197	38	2	1	0	5
Other Public Inst.	60	34	20	3	3	0	0
Public Agency Inst.	1,416	775	333	18	284	2	4
Private Agency Inst.	37	12	11	0	8	6	0
Individual	212	31	42	1	137	1	0
Other	70	48	3	3	15	1	0
Inapplicable	63	23	3	1	3	32	1
TOTAL	22,740	11,409	5,599	968	4,564	91	109

Missing Information - 44

An indication of possible inaccuracy in the data is found in Table 24, Disposition by Manner of Handling. Of the 136 cases listed as being waived to criminal court, 20 were reported as being handled without petition. It is doubtful such was the case. Similarly, 13 of the entries pertaining to the transfer of legal custody were reported to have been handled without petition, which is also questionable. As is evident from the cited examples, care should be taken in the interpretation of the data in this table.

TABLE 24
DISPOSITION BY MANNER OF HANDLING
1980

DISPOSITION	TOTAL	WITHOUT PETITION	WITH PETITION
Waived to Criminal Court	136	20	116
NOT SUBSTANTIATED Dismissed	3,297	1,650	1,645
COMPLAINT SUBSTANTIATED Dismissed - Warned	5,626	4,723	903
Held Open	246	145	101
Probation	4,068	537	3,531
Referred Elsewhere	4,806	3,327	1,479
Runaway Returned	414	336	78
Other	711	300	411
Restitution	247	95	152
Diversion	1,116	393	723
CUSTODY TO Public Inst. Delinquents	244	12	232
Other Public Institution	60	7	53
Public Agency Institution	1,417	80	1,337
Private Agency/Institution	37	4	33
Individual	212	30	182
Other	72	2	70
Inapplicable	63	24	39
TOTAL	22,770	11,685	11,085

Missing Information - 14

Table 25 presents data for Disposition by Sex. Examination of data shows that 39.0% of both sexes referred to the courts were dismissed as unproved or warned. Of the total number of referrals for males, 21.6% were placed on probation. This percentage rate was not true for females, as only 9.8% of referred females were placed on probation. More females (27.1%) were referred to other agencies or placed in diversion than males (17.3%) and more females were remanded to the custody of an institution (15.8%) than were males (12.2%).

TABLE 25
DISPOSITION BY SEX
1980

DISPOSITION	TOTAL	MALE	FEMALE
Waived to Criminal Court	138	123	15
NOT SUBSTANTIATED Dismissed	3,297	2,332	965
COMPLAINT SUBSTANTIATED Dismissed - Warned	5,625	3,846	1,779
Held Open	246	171	75
Probation	4,065	3,361	704
Referred Elsewhere	3,522	1,923	1,599
Runaway Returned	413	212	201
Other	708	522	186
Restitution	247	220	27
Diversion	1,113	772	341
CUSTODY TO Public Inst. Delinquents	244	202	42
Other Public Institutions	60	44	16
Public Agency Institution	2,694	1,634	1,060
Private Agency/Institution	37	22	15
Individual	213	120	93
Other	93	75	18
Inapplicable	42	17	25
TOTAL	22,757	15,596	7,161
Missing Information	26		

Disposition by Race is presented in Table 26. Data indicate about thirty five and one-half percent of the black and white referrals made to the court were dismissed as unproved or warned, while twenty nine and one half percent of Indian and "Other" referrals were dismissed. Further probation was granted to 18.4% of white referrals, 9.5% of blacks, 8.8% of Indian, and 14.2% of "Other". Differences are also noted in the use of diversion or referrals to other agencies as 22.7% of the white referrals, 37.2% of the black referrals, 46.5% of the Indian referrals, and 34.0% of the "Other" referrals were recorded in these two categories. There appears to be no significant difference in the use of custody placements for 1980.

TABLE 26
DISPOSITION BY RACE
1980

DISPOSITION	TOTAL	WHITE	BLACK	INDIAN	OTHER
Waived to Criminal Court	120	92	21	4	3
NOT SUBSTANTIATED Dismissed	3,124	2,407	610	27	80
COMPLAINT SUBSTANTIATED Dismissed - Warned	5,621	4,863	668	19	71
Held Open	244	222	19	1	2
Probation	3,597	3,193	323	19	62
Referred Elsewhere	4,792	3,419	1,145	97	131
Runaway Returned	410	371	23	8	8
Other	697	589	84	9	15
Restitution	246	222	19	0	5
Diversion	625	517	87	4	17
CUSTODY TO Public Inst. Delinquents	237	197	36	1	3
Other Public Institution	57	49	8	0	0
Public Agency Institution	1,194	931	221	14	28
Private Agency/Institution	36	28	3	4	1
Individual	212	175	20	8	9
Other	92	63	26	1	2
Inapplicable	42	39	2	1	0
TOTAL	21,346	17,314	3,308	217	436

Missing Information - 1,437

Table 27 presents the data for Time Elapsed Between Referral and Disposition by Category of Offense. Examination of this table shows that overall 40.6% of the total referrals are disposed of in ten days or less. In looking at the individual categories, 28.0% of the delinquent/miscreant offenses, 48% of all status offenses, and 66.4% of all deprived cases were disposed of by the court in ten days or less. The court further disbursed 65.3% of all referrals within thirty days.

TABLE 27

TIME ELAPSED BETWEEN REFERRAL AND DISPOSITION BY CATEGORY OF OFFENSE

TIME BETWEEN REFERRAL & DISPOSITION	DELINQUENT MISCREANT	STATUS OFFENSE	TRAFFIC	DEPRIVED	SPECIAL PROCEEDINGS	OTHER	TOTAL	PERCENTAGE OF TOTAL *
10 Days or Less	3,166	2,658	211	2,972	40	69	9,116	40.6
11 - 20 Days	2,057	943	190	310	12	12	3,524	15.7
21 - 30 Days	1,285	427	133	170	12	5	2,032	9.0
31 - 40 Days	928	290	117	145	8	4	1,492	6.6
41 - 50 Days	755	256	62	131	2	2	1,208	5.4
51 - 75 Days	1,181	373	113	273	10	6	1,956	8.7
76 - 100 Days	725	214	49	173	4	1	1,166	5.2
101 - 150 Days	635	197	44	138	1	2	1,017	4.5
151 - 200 Days	266	92	23	64	1	0	446	2.0
201 - 250 Days	151	38	7	30	1	1	228	1.0
251 - 300 Days	66	20	2	32	0	0	120	0.5
300 + Days	93	33	8	38	0	0	172	0.8
TOTAL	11,308	5,541	959	4,476	91	102	22,477	100.0%

Missing Information - 306

* All percentages rounded

SUMMARY

Included in this section have been selected tables representing either notable comparisons from the juvenile information system, or to highlight known areas of concern when attempting to evaluate the reported data. While numerous cautions have been cited in relationship to the "Missing" category, the reader is advised that the quality of the data received and the manner in which it is processed has improved considerably over the past few years. Although heeding the cautions is wise, the reader should be advised this data is currently the best available socio-demographic information concerning juvenile court activity in the state.

While numerous other comparisons may have been offered, the decision was made to limit the number to those presented. Additional information for any specific locality or category may be received by contacting the Kansas Statistical Analysis Center in Topeka, Kansas.

SECTION III

Delinquent/Miscreant Referrals

SECTION III

DELINQUENT/MISCREANT REFERRALS

Currently, decision makers and legislators are focusing their attention on juveniles referred for delinquent/miscreant offenses. The purpose of this section is to examine those referrals classified as Delinquent/Miscreant and, hopefully, supply pertinent information or some of the more frequently asked questions.

Table 28 presents Delinquent/Miscreant referrals for a three year time frame for the four most populous districts and a combined total for all other districts. The table indicates that District 10 was the only district to experience an increase in delinquent/miscreant referrals in 1980 from 1979 (8.4%). District 3 shows the greatest percentage of decrease for total referrals in 1980 (-32.1%) from 1979. In looking at the three year trend between 1978 and 1980 three of the major districts (3-10-18) show a steady percentage increase while District 29 exhibits a decrease of 21.8%.

TABLE 28

TOTAL DELINQUENT/MISCREANT REFERRALS
THREE YEAR TREND
1978 - 1980

REFERRALS	TOTAL 1978	TOTAL 1979	% OF CHANGE 78-79	TOTAL 1980	% OF CHANGE 79-80	% CHANGE 78 vs 80
DISTRICT 3	977	1,652	+ 40.9	1,121	- 32.1	+ 12.8
DISTRICT 10	2,233	2,071	- 7.3	2,261	+ 8.4	+ 1.2
DISTRICT 18	1,610	2,167	+ 25.7	2,076	- 4.2	+ 22.4
DISTRICT 29	2,051	1,869	- 8.9	1,603	- 14.2	- 21.8
ALL OTHER DISTRICTS	4,491	4,515	+ 0.5	4,458	- 1.3	- 0.7
TOTAL	11,362	12,274	+ 7.4	11,519	- 6.2	+ 1.2

Table 29 gives the reader Reason Referred by Sex and Race.

The table shows that of the total number of referrals 82.3% were male. The table further shows males are referred for 94.6% of the "Breaking and Entering" offenses, 88.4% of the "Larceny-Other" category and 87.4% of the total number of "Vandalism" referrals. In contrast, females account for only 17.7% of the total number of referrals. They are referred for 40% of the total number of "Shoplifting" offenses, 21.4% of the total referrals for drug usage, and 21.4% of "Non - Aggravated Assault" referrals.

The table also shows that white referrals account for 81.6% of the total number of juveniles referred for delinquent/miscreant offenses. White youths are most frequently referred for "Larceny-Other" (17.1%) and account for 84.4% of the youths referred in this category. White youths also account for 90% of the total number referred for "Vandalism".

Black youths account for 16.0% of the total number of juveniles referred. They are most frequently referred for the offense of "Shoplifting" (24.4%) and account for 28.2% of the total number of youths referred for this category.

As has been noted elsewhere, all data pertaining to race must be examined cautiously due to the level of "Missing Information" of 11.4% for Delinquent/Miscreant referrals.

TABLE 29
REASON REFERRED BY SEX AND RACE
1980

REASON REFERRED	SEX		TOTAL*	RACE				TOTAL*
	MALE	FEMALE		WHITE	BLACK	INDIAN	OTHER	
Murder & Non-Neg. Mansl.	5	3	8	7	1	0	0	8
Negligent Manslaughter	2	1	3	1	1	0	0	2
Forcible Rape	23	0	23	3	17	0	0	20
Robbery-Purse Snatching	52	11	63	26	34	0	0	60
Robbery-Non-Purse Snatch.	189	13	202	126	19	2	3	150
Assault-Aggravated	244	49	293	141	75	4	4	224
Assault-Non-Aggravated	469	128	597	466	102	3	5	576
Burglary-Brk & Enter.	1,503	86	1,589	959	258	16	29	1,262
Auto Theft-Unauth. Use	309	46	355	288	17	8	0	313
Auto Theft-Other	225	18	243	196	36	1	1	234
Larceny-Shoplifting	958	642	1,600	970	395	6	32	1,403
Larceny-Other	1,681	211	1,892	1,412	226	3	31	1,672
Weapons	90	8	98	69	17	0	4	90
Sex Offen.-Not Rape	67	16	83	55	20	1	1	77
Drugs-Narcotic	125	50	175	138	12	0	3	153
Drugs-Not Narcotic	479	114	593	503	38	3	10	554
Drunkness	32	9	41	40	0	1	0	41
Disorderly Conduct	402	90	492	365	89	5	12	471
Vandalism	1,087	157	1,244	1,056	88	2	16	1,162
Other	1,013	278	1,291	997	123	8	20	1,148
Arson	72	14	86	70	11	0	0	81
Trespassing	349	77	426	363	37	2	6	408
TOTAL	9,376	2,021	11,397	8,251	1,616	65	177	10,109
Missing Information			12					1,300

*Discrepancies will occur due to cross-tabulations and "Missing Information".

Reason Referred by Age is presented in Table 30. This table shows that youths 17 years of age account for 28.6% of the court's workload in delinquent/miscreant offenses. The table also shows 17 year olds account for 31.5% of offenses committed against persons, 28.6% of juveniles referred for "Burglary," 30.3% of the total number of youths referred for "Larceny-Other," and 36.2% of all youths referred for drug related offenses.

The table also reveals that youths 16 years of age account for one-fourth of the total number referred to the court for delinquent/miscreant offenses. Sixteen year old youths account

for 25% of offenses committed against persons, 24.8% of "Burglary" offenses, 25.5% of the "Larceny-Other" category referrals, and 31.1% of the total number of juveniles referred for drug offenses. Fifteen year old youths account for 17% of the total number of youths referred in 1980. This age also accounts for almost 17% of the above mentioned offenses.

TABLE 30
REASON REFERRED BY AGE
1980

REASON REFERRED	10 & UNDER	11-12	13-14	15	16	17	18 & OVER	TOTAL
Murder & Non-Negligent Manslaughter	0	0	1	0	2	5	0	8
Negligent Manslaughter	0	1	1	0	1	0	0	3
Forcible Rape	4	0	1	3	7	7	0	22
Robbery-Purse Snatching	1	1	7	9	16	28	0	62
Robbery-Non-Purse Snatch.	4	10	31	33	52	71	0	201
Assault-Aggravated	12	16	45	60	72	86	2	293
Assault-Non-Aggravated	17	38	109	104	145	174	2	589
Burglary- Breaking and Entering	67	96	288	280	392	451	5	1,579
Auto Theft-Unauth. Use	2	13	77	90	102	70	0	354
Auto Theft-Other	0	6	44	50	70	72	1	243
Larceny-Shoplifting	91	180	393	251	356	326	1	1,598
Larceny-Other	39	127	346	312	480	570	8	1,882
Weapons	2	4	26	9	27	29	1	98
Sex Offenses-Not Rape	6	5	15	15	14	27	0	82
Drugs-Narcotic	1	2	22	26	50	69	3	173
Drugs-Not Narcotic	0	4	79	110	187	207	3	590
Drunkenness	0	0	6	9	7	19	0	41
Disorderly Conduct	13	14	47	70	152	190	2	488
Vandalism	124	140	261	176	256	270	2	1,229
Other	29	83	214	239	306	399	11	1,218
Arson	25	13	10	14	13	11	0	86
Trespassing	2	33	61	62	110	153	2	423
TOTAL	439	786	2,084	1,922	2,817	3,234	43	11,325

Missing Information 194

Table 31 displays Reason Referred by Month. March through August contains the highest percentage of juvenile referrals (55.3%). However, this table does not show any significant numerical change on a month to month basis to indicate any

TABLE 31
REASON REFERRED BY MONTH
1980

REASON REFERRED	TOTAL	JAN.	FEB.	MARCH	APRIL	MAY	JUNE	JULY	AUG.	SEPT.	OCT.	NOV.	DEC.
Murder and Non-Negligent Manslaughter	8	0	1	0	0	2	1	1	1	1	0	0	1
Negligent Manslaughter	3	0	0	0	1	0	1	0	0	0	0	0	1
Forcible Rape	23	2	6	0	1	2	2	0	3	5	0	2	0
Robbery-Purse Snatching	63	7	11	7	11	4	6	3	8	3	0	2	1
Robbery-Non-Purse Snatch.	202	18	7	18	22	8	11	22	44	14	15	12	11
Assault-Aggravated	293	23	27	18	32	37	30	28	23	18	23	20	14
Assault-Non-Aggravated	596	48	58	58	50	50	76	40	37	56	49	33	41
Burglary-Breaking and Entering	1,590	140	132	126	161	140	130	165	177	140	111	106	62
Auto Theft-Unauth. Use	355	19	18	29	34	28	27	43	27	39	38	23	30
Auto Theft-Other	243	27	17	24	28	18	14	24	21	15	18	17	20
Larceny-Shoplifting	1,600	121	117	175	147	128	141	111	138	96	135	153	138
Larceny-Other	1,892	150	123	171	173	189	167	193	153	147	179	121	126
Weapons	98	13	8	4	13	7	6	7	14	4	8	7	7
Sex Offenses-Not Rape	83	6	1	4	9	8	14	11	8	10	7	3	2
Drugs-Narcotic	175	22	13	20	11	17	14	4	9	24	20	14	7
Drugs-Not Narcotic	593	53	62	89	49	81	45	23	37	52	48	33	21
Drunkenness	41	1	5	7	2	1	6	1	3	7	4	3	1
Disorderly Conduct	493	31	23	28	48	41	49	48	49	66	39	36	35
Vandalism	1,246	83	66	103	140	143	88	123	101	88	147	87	77
Other	1,291	88	96	107	125	113	107	154	111	124	106	86	74
Arson	86	8	3	11	8	5	5	14	6	8	6	4	8
Trespassing	426	22	28	38	56	45	68	51	37	27	24	15	15
TOTAL	11,400	882	822	1,037	1,121	1,067	1,008	1,066	1,007	944	977	777	692
Missing Information	9												

45

TABLE 32

REASON REFERRED BY TIME ELAPSED BETWEEN REFERRAL AND DISPOSITION
1980

REASON REFERRED	10 DAYS OR LESS	11-20 DAYS	21-30 DAYS	31-40 DAYS	41-50 DAYS	51-75 DAYS	76-100 DAYS	101- 150 DAYS	151- 200 DAYS	201- 250 DAYS	251- 300 DAYS	300 PLUS DAYS	TOTAL
Murder and Non-Negligent Manslaughter	2	1	0	1	0	0	1	3	0	0	0	0	8
Negligent Manslaughter	0	0	0	0	2	0	0	1	0	0	0	0	3
Forcible Rape	0	6	2	2	2	3	5	0	1	1	0	1	23
Robbery-Purse Snatching	10	8	8	6	9	8	6	5	1	0	1	1	63
Robbery-Non-Purse Snatch.	40	34	31	24	28	12	19	7	0	1	1	5	202
Assault-Aggravated	56	50	31	23	27	34	35	18	10	3	1	5	293
Assault-Non-Aggravated	139	98	64	31	48	79	49	33	26	13	6	10	596
Burglary-Breaking and Entering	333	270	210	155	122	192	103	103	42	24	10	6	1,570
Auto Theft-Unauth. Use	117	80	35	21	36	25	19	8	5	3	2	2	353
Auto Theft-Other	69	42	19	19	15	31	15	14	7	2	2	5	240
Larceny-Shoplifting	540	316	184	188	92	115	57	50	24	3	6	5	1,580
Larceny-Other	353	360	233	144	131	237	158	141	59	34	13	14	1,877
Weapons	29	14	17	7	7	8	6	2	2	2	0	2	96
Sex Offenses-Not Rape	27	11	5	3	7	17	8	3	1	1	0	0	83
Drugs-Narcotic	44	32	19	14	13	19	6	9	11	2	1	2	172
Drugs-Not Narcotic	161	84	52	32	36	99	49	33	12	18	7	4	587
Drunkness	26	3	4	1	1	2	1	1	1	0	1	0	41
Disorderly Conduct	235	76	39	38	20	40	18	11	4	7	1	2	491
Vandalism	317	263	138	95	69	121	76	88	26	20	7	18	1,238
Other	444	227	145	94	71	112	68	67	26	13	5	11	1,283
Arson	23	13	8	4	7	4	13	12	2	0	0	0	86
Trespassing	201	69	41	26	12	23	13	26	6	4	2	0	423
TOTAL	3,166	2,057	1,285	928	755	1,181	725	635	266	151	66	93	11,308
Missing Information	101												

specific month as a peak month when most delinquent/miscreant offenses occur. By contrast, the table does show that by individual offense, August had more robberies and burglaries, July had the largest number of referrals for "Larceny-Other," and March had the largest number of "Shoplifting" offenses.

Table 32 provides the reader with Reason Referred by Time Elapsed Between Referral and Disposition. The table shows the court disposes of 48.8% of all crimes against persons within thirty days and disposes of 20.8% of this number in ten days or less. The table further shows the disposition rate for crimes against property to be 56.2% within thirty days. Overall, the 11,308 referrals made to the court in 1980 for delinquent/miscreant offenses, 6,508 (57.6%) were disposed of within 30 days.

Reason Referred by Manner of Handling is given in Table 33. This table indicates that 58.0% of all referrals made to the court for delinquent/miscreant offenses in 1980 were handled with a formal petition.

TABLE 33
REASON REFERRED BY MANNER OF HANDLING
1980

REASON REFERRED	WITHOUT PETITION	WITH PETITION	TOTAL
Murder & Non-Neg. Mansl.	3	5	8
Negligent Manslaughter	1	2	3
Forcible Rape	5	18	23
Robbery-Purse Snatching	10	53	63
Robbery-Non Purse Snatch.	24	178	202
Assault-Aggravated	67	227	294
Assault-Non Aggravated	264	332	596
Burglary, Brk & Enter.	298	1,292	1,590
Auto Theft-Unauth. Use	86	269	355
Auto Theft-Other	82	160	242
Larceny-Shoplifting	905	695	1,600
Larceny-Other	617	1,274	1,891
Weapons	37	61	98
Sex Off.-Not Rape	37	46	83
Drugs-Narcotic	58	117	175
Drugs-Not Narcotic	308	286	594
Drunkenness	33	8	41
Disorderly Conduct	313	180	493
Vandalism	617	631	1,248
Other	626	664	1,290
Arson	47	39	86
Trespassing	349	77	426
TOTAL	4,787	6,614	11,401

Missing Information 8

Manner of Handling by Sex and Race is presented in Table 34. Examination of data by sex reveals that of the total number of juveniles handled with formal petition 85.6% are male, and only 14.4% are female. There were 9,369 males referred to the court for delinquent/miscreant offenses in 1980, 60.4% of which were handled with formal petition. In contrast, only 47.0% of the 2,020 female referrals were handled with formal petition.

When considering the race of offenders, white referrals constitute 81.6% of the total number of referrals in this category, of which 52.2% were handled by formal petition. Black referrals make up 16.0% of the total number of referrals for delinquent/miscreant offenses in 1980 of which 56.6% were handled by formal petition. A notable aspect of this comparison is found in the

Indian referrals. While Indian referrals constitute .6% of the total number of youths referred for delinquent/miscreant offenses, 66.1% are handled by formal petition.

TABLE 34
MANNER OF HANDLING BY SEX AND RACE
1980

	SEX		TOTAL*	WHITE	BLACK	RACE INDIAN	OTHER	TOTAL*
	MALE	FEMALE						
Without Petition	3,710	1,070	4,780	3,938	700	22	86	4,746
With Petition	5,659	950	6,609	4,307	914	43	91	5,355
TOTAL	9,369	2,020	11,389	8,245	1,614	65	177	10,101
Missing Information			20					1,308

* Discrepancies will occur due to cross-tabulation and "Missing Information"

Manner of Handling by Age is presented in Table 35. This table indicates that youths 15 through 17 constitute 70.2% of the total number of referrals made for delinquent/miscreant offenses. The table also shows that in each of these age groups slightly over 60% of the referrals made were handled with petition.

TABLE 35
MANNER OF HANDLING BY AGE
1980

	TO AND UNDER	11-12	13-14	15	16	17	18 AND OVER	TOTAL
Without Petition	302	399	919	762	1,074	1,280	14	4,750
With Petition	170	387	1,164	1,159	1,741	1,951	29	6,601
TOTAL	472	786	2,803	1,921	2,815	3,231	43	11,351
Missing Information	58							

Care Pending Disposition by Race and Sex is shown in Table 36. This table indicates that 86.3% of all youths referred for delinquent/miscreant offenses are not detained in any manner prior to disposition of their case. The table also shows that of the males referred to the court for delinquent/miscreant offenses in 1980, 14.1% were detained in some manner until disposition of their case; in contrast only 11.5% of the 2,016 females referred were detained.

White referrals were detained until disposition in 12.6% of the cases; black referrals were detained in 17.7% of the cases, and Indian youths, which account for .6% of the total number of referrals, were detained until disposition in 31.7% of these cases.

TABLE 36
CARE PENDING DISPOSITION BY RACE AND SEX
1980

	SEX		TOTAL*	RACE				TOTAL*
	MALE	FEMALE		WHITE	BLACK	INDIAN	OTHER	
No Detention Overnight	8,043	1,779	9,822	7,193	1,327	45	147	8,712
Detention in Jail	695	71	766	588	149	10	17	764
Detention Home	549	151	700	393	110	7	13	523
Foster Home	11	6	17	11	6	0	0	17
Other Placement	62	9	71	49	21	1	0	71
TOTAL	9,360	2,016	11,376	8,234	1,613	63	177	10,087
Missing Information		33						1,322

* Discrepancies will occur due to cross-tabulation and "Missing Information"

The analysis in Table 37, Care Pending Disposition by Age, shows that the court detains 17% of all seventeen year olds, 15.5% of all sixteen year olds, and 14.4% of all fifteen year olds prior to case disposition.

TABLE 37

CARE PENDING DISPOSITION BY AGE
1980

	UNDER 11	11-12	13-14	15	16	17	18+	TOTAL
No Detention Overnight	462	732	1,851	1,642	2,378	2,681	37	9,783
Detention in Jail	6	16	72	130	230	308	4	766
Detention Home	2	27	140	131	190	209	1	700
Foster Home	1	1	5	1	1	7	0	16
Other Placement	0	8	11	15	16	21	0	71
TOTAL	471	784	2,079	1,919	2,815	3,226	42	11,336

Missing Information 75

Reason Referred by Disposition is reported in Table 38. The table shows that of the 11,409 referrals made to the court for delinquent/miscreant offenses, 5,077 (44.5%) were dismissed as not proved or warned; 25.8% were placed on probation; 7.2% were placed in a diversion program, 8.9% were placed in a juvenile facility, and .9% made restitution.

An analysis of individual offenses shows wide differences from the overall disposition alternatives for all referrals. The data show that 25.8% of "Burglary" cases, 49.8% of "Shoplifting," 53.7% of all drug referrals, and 70% of "Disorderly Conduct" referrals are dismissed not proved or dismissed warned. The data also indicate that probation is granted in 35% of "Aggravated Assault" referrals, 38% of "Burglary" referrals, and in 34% of "Larceny-Other" referrals. In the category of "Restitution," payment was ordered by the court in .6% of all "Burglary" referrals, .1% of "Shoplifting" referrals, 1% of "Larceny-Other" referrals, and in 2.9% of "Vandalism" referrals. Incarceration was ordered for 15.8% of juveniles referred for "Burglary" .3%

TABLE 38
REASON REFERRED BY DISPOSITION
1980

REASON REFERRED	TOTAL	COMPLAINT SUBSTANTIATED										CUSTODY TO						
		WAIVED TO CRIM. COURT	NOT PROVEN DISMISSED	DISMISSED WARNED	HELD OPEN	PROBATION	REFERRED ELSEWHERE	RUNAWAY RETURNED	OTHER	RESTITUTION	DIVERSION	PUBLIC INST. DELINQUENTS	OTHER PUBL. INSTITUTION	PUBL. AGENCY INSTITUTION	PRIV. AGENCY INSTITUTION	INDIVIDUAL	OTHER	INAPPLICABLE
Murder and Non-Negligent Manslaughter	8	5	1	0	0	0	0	1	1	0	0	0	0	0	0	0	0	0
Negligent Manslaughter	3	0	0	1	0	1	0	0	0	0	0	0	0	0	0	0	0	0
Forcible Rape	23	3	5	3	0	4	0	0	0	0	1	0	0	7	0	0	0	0
Robbery-Purse Snatching	63	6	17	1	0	23	0	1	0	0	1	6	0	7	0	0	1	0
Robbery-Non-Purse Snatch.	202	12	27	12	2	95	9	0	6	1	5	5	1	22	0	1	3	1
Assault-Aggravated	294	3	87	28	7	103	4	0	8	0	17	4	2	29	0	0	2	0
Assault-Non-Aggravated	598	4	134	195	4	139	11	1	26	2	13	11	3	48	0	1	6	0
Burglary-Breaking and Entering	1,590	33	289	113	17	604	62	3	33	10	133	44	3	203	2	6	26	9
Auto Theft-Unauth. Use	355	3	45	29	1	100	33	13	24	1	12	22	4	57	1	3	7	0
Auto Theft-Other	243	3	43	43	4	74	13	6	5	1	2	15	1	24	2	0	6	1
Larceny-Shoplifting	1,601	2	278	519	9	238	181	1	29	3	277	11	1	35	1	1	12	3
Larceny-Other	1,894	21	261	431	22	644	44	2	67	18	139	40	7	166	2	3	20	7
Weapons	98	0	17	35	1	18	6	0	1	3	4	4	0	6	1	0	2	0
Sex Offenses-Not Rape	83	1	13	23	0	19	10	0	0	0	2	3	0	6	0	1	2	0
Drugs-Narcotic	175	0	46	16	4	72	8	1	7	0	10	0	2	6	0	1	2	0
Drugs-Not Narcotic	594	1	119	232	10	138	29	0	20	0	27	3	2	9	0	0	3	1
Drunkenness	41	1	18	7	0	8	2	0	3	0	1	0	0	0	1	0	0	0
Disorderly Conduct	493	2	118	227	1	85	11	1	18	1	9	0	0	15	0	0	5	0
Vandalism	1,248	7	218	476	11	277	19	2	60	36	68	6	2	45	0	9	12	0
Other	1,291	17	241	328	28	253	73	7	102	25	82	18	5	84	2	5	20	1
Arson	86	1	8	35	1	17	4	0	9	0	3	2	0	3	0	0	3	0
Trespassing	426	1	60	275	2	36	9	0	19	3	14	3	1	2	0	0	1	0
TOTAL	11,409	126	2,045	3,032	124	2,948	528	39	432	104	820	197	34	775	12	31	133	23

52

of juveniles referred for "Shoplifting," and 11.4% referred for "Larceny-Other."

Table 39 presents Disposition by Sex and Race. The table shows that of the 126 youths waived to criminal court, 94.4% (119) were males. Of the 5,073 referrals that were dismissed by the court as unproved or warned in 1980, 79.5% (4,034) were males and 20.5% (1,039) were females. Data indicate that probation was granted to 27.8% of the total number of male referrals and to 16.9% of the total number of females referred. The table shows that 6.5% of the total number of males referred were placed in a "Diversion" program while 10.4% of the total number of females were handled in a like manner.

Of the 108 youths "Waived to Criminal Court," 75.9% (82) were white, 18.5% (20) were black, and 3.7% (4) were Indian. An analysis of white referrals shows that 47% of the total number referred were dismissed as unproved or warned, probation was granted in 26.4% of all white referrals, 3.6% of white referrals were placed in "Diversion" programs and 7.9% were incarcerated in an institutional setting. Of the black referrals 56.9% were dismissed by the court as unproved or warned, 16.8% of all black referrals were placed on probation, and 9.7% of these referrals were placed in the custody of an institution. Analysis of data available for Indian referrals shows 40% of the total number of Indian youths referred were dismissed as unproved or warned, probation was granted to 23%, 9.2% were incarcerated in an institution.

TABLE 39
DISPOSITION BY SEX AND RACE
1980

	Male	Female	Total	White	Black	Indian	Other	Total
DISPOSITION								
Waived to Criminal Court	119	7	126	82	20	4	2	108
NOT SUBSTANTIATED								
Dismissed	1,667	377	2,044	1,333	483	16	53	1,885
COMPLAINT SUBSTANTIATED								
Dismissed-Warned	2,367	662	3,029	2,547	437	10	32	3,026
Held Open	99	25	124	112	9	0	1	122
Probation	2,603	341	2,944	2,176	272	15	49	2,512
Referred Elsewhere	399	129	528	441	73	5	7	526
Runaway Returned	27	12	39	32	2	3	2	39
Other	348	88	436	348	63	5	11	427
Restitution	91	13	104	98	5	0	1	104
Diversion	609	210	819	293	54	0	7	354
CUSTODY TO								
Public Inst. Delinquents	173	24	197	155	33	1	1	190
Other Public Inst.	29	5	34	27	4	0	0	31
Public Agency Inst.	678	97	775	460	119	5	8	592
Private Agency/Inst.	10	2	12	12	0	0	0	12
Individual	26	5	31	28	1	0	1	30
Other	108	24	132	94	31	1	2	47
Inapplicable	23	0	23	13	10	0	0	23
TOTAL	9,376	2,021	11,397	8,251	1,616	65	177	10,109
Missing Information			12					1,300

54

TABLE 40
DISPOSITION BY AGE
1980

DISPOSITION	TOTAL	10 & UNDER	11-12	13-14	15	16	17	18 & OVER
Waived to Criminal Court	125	0	1	1	7	27	87	2
NOT SUBSTANTIATED Dismissed	2,039	83	131	315	318	518	670	4
COMPLAINT SUBSTANTIATED								
Dismissed-Warned	3,012	219	307	588	457	668	766	7
Held Open	124	10	6	21	20	32	34	1
Probation	2,945	66	122	469	505	809	959	15
Referred Elsewhere	528	23	42	112	95	110	145	1
Runaway Returned	39	0	1	10	6	9	13	0
Other	419	28	30	73	78	93	113	4
Restitution	104	3	12	21	16	22	30	0
Diversion	818	21	82	201	137	202	171	4
CUSTODY TO								
Public Inst. Delinquents	197	0	0	31	53	49	62	2
Other Public Institution	34	0	3	9	6	12	4	0
Public Agency Institution	775	7	37	189	183	219	139	1
Private Agency/Institution	12	0	0	5	2	2	3	0
Individual	31	0	8	4	4	7	8	0
Other	132	11	4	31	33	33	18	2
Inapplicable	23	0	0	4	2	5	12	0
TOTAL	11,357	471	786	2,084	1,922	2,817	3,234	43

Missing Information 52

Table 40, Disposition by Age, shows that 40.3% of all fifteen year old referrals, 42.1% of all sixteen year old referrals, and 44.4% of all seventeen year old referrals are dismissed by the court as unproved or warned. The table further indicates that in the fifteen year old age group, 26.3% receive probation, 15.4% were ordered to pay restitution, 16.7% were placed in a diversion program, and 12.7% were placed in the custody of an institution. For sixteen year olds 28.7% were placed on probation, 21.1% were ordered to make restitution, 24.7% were placed in a diversion program, and 10% were remanded to the custody of an institution. Of the 17 year olds, 29.7% were given probation; 28.8% were ordered by the court to pay restitution; slightly under 21% were placed in a diversion program, and 20.4% were placed in an institutional setting.

SUMMARY

The purpose of this section has been to present delinquent/miscreant offenses and to provide some descriptive highlights and pertinent information of these offenses. It is hoped that this information will aid those persons responsible for program planning in the juvenile justice area to make better use of limited funding or in revision of the current juvenile laws.

Further data analysis is available by contacting the Kansas Statistical Analysis Center in Topeka.

APPENDIX A
Summary of Juvenile Referrals
by Judicial District
1980

CONTINUED

1 OF 2

REFERRALS BY SEX, RACE AND AGE
BY DISTRICT AND COUNTY
1980

	TOTAL REFERRALS	SEX		RACE				AGE						
		MALE	FEMALE	WHITE	BLACK	INDIAN	OTHER	UNDER	11-12	13-14	15	16	17	18+
DISTRICT 8	615	476	138	465	135	0	12	77	29	97	128	144	140	0
Dickinson	143	108	35	142	0	0	1	18	6	25	26	33	35	0
Geary	424	337	87	276	135	0	11	44	21	68	94	104	93	0
Marion	28	19	9	27	1	0	0	7	2	3	3	5	9	0
Morris	20	13	7	20	0	0	0	8	0	1	5	2	4	0
DISTRICT 9	236	171	65	211	9	0	16	46	23	33	43	49	42	0
Harvey	121	81	40	104	5	0	12	22	11	21	24	14	29	0
McPherson	115	90	25	107	4	0	4	24	12	12	19	35	13	0
DISTRICT 10	3,911	2,860	1,049	3,811	93	0	6	173	230	755	746	962	1,032	7
Johnson														
DISTRICT 11	495	359	136	472	10	4	9	77	26	98	92	100	101	1
Cherokee	108	79	29	101	3	3	1	21	3	28	19	26	11	0
Crawford	163	109	54	163	0	0	0	18	15	33	37	29	31	0
Labette	113	95	18	102	5	1	5	14	4	16	20	25	34	0
Neosho	75	54	21	70	2	0	3	15	1	16	10	14	18	1
Wilson	36	22	14	36	0	0	0	9	3	5	6	6	7	0
DISTRICT 12	124	91	33	123	0	0	1	18	15	15	18	22	33	1
Cloud	38	27	11	38	0	0	0	9	4	6	6	6	7	0
Jewell	16	9	7	16	0	0	0	4	5	1	2	3	1	0
Lincoln	4	4	0	4	0	0	0	0	0	1	2	1	0	0
Mitchell	21	13	8	20	0	0	1	0	2	3	4	5	6	0
Republic	17	15	2	17	0	0	0	0	5	3	1	4	4	0
Washington	28	23	5	28	0	0	0	5	1	1	3	3	15	0
DISTRICT 13	392	286	105	380	4	1	6	43	33	87	74	76	77	2
Butler	221	175	46	211	4	0	6	12	20	59	43	40	47	0
Chautauqua	58	36	22	57	0	0	0	9	7	8	10	10	13	1
Elk	31	20	10	30	0	1	0	1	2	6	10	7	4	1
Greenwood	82	55	27	82	0	0	0	21	4	14	11	19	13	0

REFERRALS BY SEX, RACE AND AGE
BY DISTRICT AND COUNTY
1980

DISTRICTS by COUNTY	TOTAL REFERRALS	SEX		RACE				AGE						
		MALE	FEMALE	WHITE	BLACK	INDIAN	OTHER	UNDER	11-12	13-14	15	16	17	18+
DISTRICT 14 Montgomery	388	292	96	313	69	0	6	54	22	83	73	81	74	1
DISTRICT 15	231	173	57	221	8	0	1	32	16	36	56	55	35	1
Graham	22	18	4	21	1	0	0	3	1	5	5	5	3	0
Rooks	23	15	8	23	0	0	0	4	2	0	5	8	4	0
Sheridan	7	4	3	7	0	0	0	3	2	0	2	0	0	0
Sherman	126	100	26	119	7	0	0	10	9	25	31	33	18	0
Thomas	52	36	16	51	0	0	1	12	2	6	13	9	10	1
DISTRICT 16	266	205	61	252	7	0	7	27	10	36	44	67	81	1
Clark	6	5	1	6	0	0	0	2	0	1	0	1	2	0
Comanche	6	6	0	6	0	0	0	0	0	0	1	3	2	0
Ford	157	122	35	144	7	0	6	13	7	24	26	38	48	1
Gray	16	12	4	16	0	0	0	3	1	3	1	2	6	0
Kiowa	35	33	2	34	0	0	1	4	2	2	7	11	9	0
Meade	46	27	19	46	0	0	0	5	0	6	9	12	14	0
DISTRICT 17	125	87	38	124	1	0	0	17	7	19	19	32	31	0
Cheyenne	1	0	1	1	0	0	0	0	0	0	1	0	0	0
Decatur	10	5	5	10	0	0	0	0	1	3	4	2	0	0
Norton	21	14	7	21	0	0	0	7	3	3	4	2	2	0
Phillips	31	23	8	31	0	0	0	1	2	3	2	10	13	0
Rawlins	24	17	7	23	1	0	0	3	0	0	1	13	7	0
Smith	5	3	2	5	0	0	0	1	0	0	0	1	3	0
Osborne	33	25	8	33	0	0	0	5	1	10	7	4	6	0
DISTRICT 18 Sedgwick	3,041	2,196	844	1,196	346	13	80	183	186	687	574	675	732	3

REFERRALS BY SEX, RACE AND AGE
BY DISTRICT AND COUNTY
1980

DISTRICTS by COUNTY	TOTAL REFERRALS	SEX		WHITE	BLACK	RACE		OTHER	AGE					
		MALE	FEMALE			INDIAN	UNDER		11-12	13-14	15	16	17	18+
DISTRICT 19	456	343	110	423	15	5	9	45	30	70	82	112	115	2
Barber	23	19	4	22	1	0	0	2	6	1	5	6	3	0
Cowley	166	124	40	148	5	5	5	20	12	21	34	39	38	2
Harper	28	23	5	28	0	0	0	6	4	4	5	6	3	0
Kingman	57	41	16	55	0	0	2	0	1	14	14	13	15	0
Pratt	80	54	26	73	6	0	1	4	0	15	8	24	29	0
Sumner	102	82	19	97	3	0	1	13	7	15	16	24	27	0
DISTRICT 20	307	218	89	300	4	0	3	31	17	57	61	77	61	2
Barton	164	119	45	160	4	0	0	19	9	24	32	38	40	2
Ellsworth	21	18	3	21	0	0	0	0	1	4	1	6	9	0
Rice	51	35	16	49	0	0	2	8	2	9	11	16	5	0
Russell	64	42	22	63	0	0	1	4	4	18	13	17	7	0
Stafford	7	4	3	7	0	0	0	0	1	2	4	0	0	0
DISTRICT 21	288	203	85	248	30	3	7	24	14	49	51	61	73	1
Clay	38	27	11	38	0	0	0	3	2	5	6	4	3	0
Riley	250	176	74	210	30	3	7	21	12	44	45	57	70	1
DISTRICT 22	125	86	39	107	1	16	0	21	9	13	13	28	41	0
Brown	63	38	25	46	1	16	0	13	4	10	5	12	19	0
Doniphan	12	10	2	11	0	0	0	3	3	1	2	1	2	0
Marshall	31	23	8	31	0	0	0	5	0	1	3	6	16	0
Nemaha	19	15	4	19	0	0	0	0	2	1	3	9	4	0
DISTRICT 23	388	283	105	381	2	0	5	28	28	83	67	87	92	0
Ellis	302	217	85	295	2	0	5	21	20	69	55	76	60	0
Gove	11	8	3	11	0	0	0	2	0	1	0	2	6	0
Logan	50	40	10	50	0	0	0	4	6	10	11	7	12	0
Trego	17	11	6	17	0	0	0	1	2	3	0	1	8	0
Wallace	8	7	1	8	0	0	0	0	0	0	1	1	6	0

REFERRALS BY SEX, RACE AND AGE
BY DISTRICT AND COUNTY
1980

DISTRICTS by COUNTY	TOTAL REFERRALS	SEX		RACE				AGE						
		MALE	FEMALE	WHITE	BLACK	INDIAN	OTHER	UNDER	11-12	13-14	15	16	17	18+
DISTRICT 24	91	74	17	83	1	1	6	18	2	17	17	16	19	1
Edwards	6	6	0	6	0	0	0	2	0	0	1	2	1	0
Hodgeman	3	3	0	3	0	0	0	0	0	0	0	1	2	0
Lane	7	6	1	7	0	0	0	0	0	0	2	2	2	1
Ness	14	13	1	12	0	0	2	2	0	2	4	2	4	0
Pawnee	47	37	10	43	1	1	2	11	1	13	8	9	4	0
Rush	14	9	5	12	0	0	2	3	1	2	2	0	6	0
DISTRICT 25	303	212	89	281	14	0	7	21	12	53	68	66	75	5
Finney	240	163	76	226	14	0	0	14	8	43	60	54	56	5
Greeley	2	2	0	1	0	0	1	1	0	0	0	0	1	0
Hamilton	7	6	1	7	0	0	0	1	0	0	0	1	4	0
Kearny	22	18	4	22	0	0	0	0	2	2	3	7	8	0
Scott	27	20	7	24	0	0	3	4	2	7	5	3	5	0
Wichita	4	3	1	1	0	0	3	1	0	1	0	1	1	0
DISTRICT 26	155	111	41	123	15	0	15	26	15	22	24	23	41	1
Grant	28	20	8	28	0	0	0	1	0	4	2	6	14	1
Haskell	14	10	4	13	0	0	1	6	1	0	5	0	2	0
Morton	6	5	1	6	0	0	0	1	0	0	2	0	3	0
Seward	92	67	24	63	15	0	14	16	14	16	15	15	16	0
Stanton	7	6	1	7	0	0	0	0	0	1	0	2	3	0
Stevens	6	3	3	6	0	0	0	2	0	1	0	0	3	0
DISTRICT 27	310	223	87	281	20	0	9	46	16	44	50	69	85	0
Reno														
DISTRICT 28	310	226	84	284	17	0	8	39	18	42	52	76	81	2
Ottawa	15	14	1	15	0	0	0	0	2	0	2	8	3	0
Saline	295	212	83	269	17	0	8	39	16	42	50	68	78	2
DISTRICT 29	4,703	2,850	1,849	2,766	1,752	104	79	1,963	398	706	496	556	583	0
Wyandotte														
TOTAL	22,784	15,597	7,161	17,378	3,315	217	437	3,798	1,494	4,170	3,952	4,500	4,742	47

*Discrepancies occur between total referrals and individual categories because of missing information.

SOURCE OF REFERRAL
BY LEGAL CATEGORY OF OFFENSE
BY MANNER OF HANDLING
ALL JUDICIAL DISTRICTS
1980

DISTRICTS	TOTAL REFERRALS	SOURCE OF REFERRAL							LEGAL CATEGORY OF OFFENSE					MANNER OF HANDLING	
		LAW ENF. AGENCY	SCHOOL DEPT.	SOCIAL AGENCY	PROB. OFFICER	PARENT/RELATIVE	OTHER COURT	OTHER SOURCE	DELINQ./MISCREANT	STATUS OFFENDER	TRAFFIC	DEPRIVED	OTHER	FORMAL	INFORMAL
1	633	273	91	121	7	96	8	37	238	205	21	150	19	386	247
2	200	162	6	8	1	19	3	1	82	69	19	30	0	200	0
3	2,693	1,699	599	109	9	192	10	70	1,121	1,070	78	418	5	1,070	1,623
4	619	450	85	28	9	24	2	16	307	242	21	40	1	151	465
5	551	439	39	28	1	12	1	31	291	149	37	74	0	183	368
6	247	155	9	38	1	37	3	3	112	67	15	53	0	194	53
7	582	416	16	48	8	53	4	37	364	109	32	75	1	360	222
8	615	505	19	53	0	6	8	22	404	100	15	95	0	432	183
9	236	136	22	46	1	15	6	10	119	65	9	43	0	147	89
10	3,911	3,537	154	94	8	84	17	13	2,261	1,365	171	98	16	1,122	2,787
11	495	233	34	65	12	54	5	91	250	107	31	106	1	485	10
12	124	77	2	25	0	3	6	10	65	13	10	34	1	103	21
13	392	276	51	25	1	13	8	14	213	113	26	35	3	161	230
14	388	328	10	20	2	19	1	8	220	95	38	33	2	187	200
15	231	169	14	12	5	15	3	12	115	55	24	34	2	154	76
16	266	233	4	3	10	7	1	7	160	49	36	21	0	231	34
17	125	87	9	14	1	6	1	6	66	30	11	16	1	83	42
18	3,041	2,510	27	227	7	203	11	53	2,076	607	123	219	16	1,723	1,317
19	456	291	29	36	5	71	5	19	246	122	32	55	1	439	17
20	307	193	26	19	1	30	2	36	177	86	15	29	0	280	27
21	288	213	16	21	0	3	13	20	169	78	12	27	2	150	138
22	125	54	0	8	1	7	0	52	50	26	14	22	13	119	5
23	388	335	9	10	1	23	2	6	234	106	24	22	2	113	275
24	91	40	1	3	3	20	18	4	39	16	12	24	0	87	4
25	303	164	51	20	6	41	1	19	160	101	20	17	5	294	9
26	155	72	6	30	6	18	0	22	56	36	15	48	0	151	4
27	310	308	0	1	0	0	0	1	153	77	20	60	0	310	0
28	310	262	7	8	0	18	11	4	168	68	25	49	0	310	0
29	4,702	1,925	108	2,317	29	60	18	241	1,603	373	62	2,637	0	1,461	3,239
TOTAL	22,784	15,542	1,444	3,437	135	1,149	168	865	11,519	5,599	968	4,564	91	11,086	11,685

* Discrepancies between "total referrals" and individual categories are due to missing information.

64

REASON REFERRED
ALL JUDICIAL DISTRICTS
1980

	TOTAL	J.D. 1	J.D. 2	J.D. 3	J.D. 4	J.D. 5	J.D. 6	J.D. 7	J.D. 8	J.D. 9	J.D. 10	J.D. 11	J.D. 12	J.D. 13	J.D. 14	J.D. 15
Murder and Non-Negligent																
Manslaughter	8	0	0	2	0	0	2	1	0	0	1	0	0	0	0	0
Negligent Manslaughter	3	0	0	1	0	0	0	0	0	0	0	0	0	0	0	0
Forcible Rape	23	0	0	2	0	0	0	1	7	0	2	1	0	2	0	0
Robbery-Purse Snatching	63	2	0	2	0	1	0	0	2	0	1	0	1	0	0	0
Robbery-Non-Purse Snatching	202	1	0	11	3	3	1	2	2	1	7	14	3	3	3	0
Assault-Aggravated	294	4	4	30	7	4	0	8	6	2	14	5	0	4	4	2
Assault-Non-Aggravated	598	27	1	36	13	22	3	27	10	10	182	18	2	2	8	1
Burglary-Breaking and Entering	1,591	46	24	112	28	30	22	34	71	12	44	51	6	35	42	26
Auto Theft-Unauthorized Use	355	4	3	33	11	22	10	5	6	12	25	20	3	29	8	0
Auto Theft-Other	243	10	0	20	3	0	7	0	1	3	87	1	0	1	0	0
Larceny-Shoplifting	1,601	13	1	300	25	26	2	39	51	9	281	11	0	12	40	11
Larceny-Other	1,894	45	18	164	54	27	20	63	87	25	557	58	13	15	27	30
Weapons	98	0	0	8	7	5	0	0	2	1	18	0	1	0	5	0
Sex Offenses-Not Rape	83	0	0	7	2	0	0	3	2	1	18	0	1	3	0	0
Drugs-Narcotic	175	5	3	16	7	8	1	4	7	1	2	5	1	6	4	1
Drugs-Not Narcotic	594	2	1	49	6	0	1	13	4	5	256	6	0	10	3	4
Drunkenness	41	0	0	3	6	0	0	0	1	0	5	0	1	1	1	0
Disorderly Conduct	494	17	6	29	16	10	7	17	12	3	82	0	1	2	15	0
Vandalism	1,248	31	8	73	51	55	12	44	57	18	316	31	24	44	28	17
Other	1,400	19	13	127	56	64	22	91	65	12	171	22	9	43	17	20
Arson	86	6	0	9	6	0	1	8	7	3	23	1	0	0	2	3
Trespassing	426	6	0	87	6	14	1	4	4	1	169	6	0	1	12	0
Running Away	2,224	28	18	264	64	89	30	55	22	16	719	38	4	31	40	21
Truancy	1,332	86	11	554	65	29	8	17	22	19	105	28	3	41	11	3
Violation of Curfew	275	43	21	2	34	4	14	2	33	5	20	0	0	3	1	0
Ungovernable Behavior	851	42	5	214	32	3	11	18	9	8	135	25	1	22	11	6
Alcohol Offense	669	3	10	26	40	5	1	5	9	17	258	12	4	13	30	23
Other	247	3	4	10	7	19	3	12	5	0	128	4	1	3	2	2
Drunk Driving	285	7	4	39	5	7	4	20	6	3	67	10	3	6	1	3
Hit & Run	10	0	0	1	0	0	0	0	0	0	0	0	0	0	0	0
Reckless Driving	323	10	15	12	9	8	4	7	2	4	62	11	7	6	14	12
Driving Without License	155	3	0	14	5	3	2	0	2	1	25	4	0	4	9	1
All Other Traffic	195	1	0	12	2	19	5	5	5	1	17	6	0	10	14	8
Abuse	1,275	27	10	119	21	17	8	33	20	6	0	32	14	1	11	7
All Other Neglect	3,289	123	20	299	19	57	45	42	75	37	98	74	20	34	22	27
Special Proceedings	91	19	0	5	1	0	0	1	0	0	16	1	1	3	2	2
Missing Information	43	0	0	1	8	0	0	1	1	0	0	0	1	2	0	1
TOTAL	22,784	633	200	2,693	619	551	247	582	615	236	3,911	495	124	392	388	231

65

REASON REFERRED
ALL JUDICIAL DISTRICTS
1980

99

	J.D. 16	J.D. 17	J.D. 18	J.D. 19	J.D. 20	J.D. 21	J.D. 22	J.D. 23	J.D. 24	J.D. 25	J.D. 26	J.D. 27	J.D. 28	J.D. 29
Murder and Non-Negligent Manslaughter	0	0	0	0	0	0	0	1	0	0	0	0	0	1
Negligent Manslaughter	0	0	1	0	0	0	0	0	0	0	0	0	0	1
Forcible Rape	0	0	3	0	0	0	0	0	0	0	0	0	0	5
Robbery-Purse Snatching	0	0	5	0	0	0	0	0	0	0	0	1	4	44
Robbery-Non-Purse Snatching	2	8	65	16	17	2	3	0	0	6	1	19	9	0
Assault-Aggravated	1	0	82	8	4	8	0	2	0	3	4	2	0	86
Assault-Non-Aggravated	8	2	60	9	10	5	4	13	1	7	2	7	8	100
Burglary-Breaking and Entering	21	6	444	53	31	23	5	17	4	40	8	21	45	289
Auto Theft-Unauthorized Use	10	0	72	19	8	11	2	1	0	13	3	5	20	0
Auto Theft-Other	0	2	16	5	9	1	0	2	0	0	0	6	5	64
Larceny-Shoplifting	20	7	394	18	7	31	1	17	1	13	4	26	7	234
Larceny-Other	23	4	269	49	17	32	11	29	13	14	11	9	21	189
Weapons	1	0	13	1	1	1	1	5	0	1	0	0	1	26
Sex Offenses-Not Rape	5	0	11	1	0	0	2	0	0	2	1	0	2	22
Drugs-Narcotic	7	1	38	11	0	10	1	3	2	1	0	2	14	14
Drugs-Not Narcotic	3	1	105	10	5	1	1	0	1	14	4	10	5	74
Drunkenness	1	0	16	1	0	0	0	3	0	1	0	0	1	0
Disorderly Conduct	10	16	70	5	3	4	7	11	0	14	6	9	4	118
Vandalism	12	6	118	17	28	16	7	49	3	17	6	11	13	136
Other	35	11	248	23	32	17	5	69	14	12	5	19	9	150
Arson	1	2	5	0	2	1	0	2	0	1	0	3	0	0*
Trespassing	0	0	41	0	3	6	0	10	0	1	1	3	0	50
Running Away	14	5	375	48	27	15	4	46	9	46	13	7	34	143
Truancy	6	2	41	28	27	14	1	6	1	45	10	23	7	119
Violation of Curfew	1	0	24	4	0	27	0	12	0	0	0	5	0	20
Ungovernable Behavior	12	3	134	24	26	1	9	8	5	5	3	17	21	41
Alcohol Offense	5	12	22	11	6	21	10	33	1	5	10	22	5	50
Other	11	8	11	7	0	0	2	1	0	0	0	3	1	0
Drunk Driving	7	2	23	4	2	1	2	6	3	9	8	4	15	14
Hit & Run	1	0	2	1	0	0	0	0	0	0	0	0	0	5
Reckless Driving	21	8	25	15	10	4	10	5	3	9	6	6	6	12
Driving Without License	4	1	34	4	2	5	0	7	0	1	1	5	1	17
All Other Traffic	3	0	39	8	1	2	2	6	6	1	0	5	3	14
Abuse	0	4	80	4	0	12	0	3	0	0	7	34	13	792
All Other Neglect	21	12	139	51	29	15	22	19	24	17	41	26	36	1,845
Special Proceedings	0	1	16	1	0	2	13	2	0	5	0	0	0	0
Missing Information	0	1	0	0	0	0	0	0	0	0	0	0	0	27
TOTAL	266	125	3,041	456	307	288	125	388	91	303	155	310	310	4,702

* District 29 includes Arson in "Other" category.

DISPOSITION
ALL JUDICIAL DISTRICTS
1980

	TOTAL	J.D. 1	J.D. 2	J.D. 3	J.D. 4	J.D. 5	J.D. 6	J.D. 7	J.D. 8	J.D. 9	J.D. 10	J.D. 11	J.D. 12	J.D. 13	J.D. 14	J.D. 15
Waived to Criminal Court	138	4	0	12	23	0	2	3	4	1	19	9	0	2	5	0
NOT SUBSTANTIATED																
Dismissed	3,299	60	46	420	54	34	55	43	105	25	180	114	7	17	12	39
COMPLAINT SUBSTANTIATED																
Dismissed-Warned	5,629	198	1	667	144	204	25	29	147	25	2,397	21	19	126	117	12
Held Open	246	13	1	4	21	1	10	0	7	4	54	5	2	40	10	10
Probation	4,071	20	70	337	258	119	64	88	84	48	666	180	23	104	69	91
Referred Elsewhere	4,806	78	21	532	57	56	20	116	66	36	367	64	26	47	79	30
Runaway Returned	414	2	2	75	12	48	21	30	0	1	5	5	2	14	8	18
Other	711	7	10	233	4	45	14	152	29	1	6	7	3	2	1	10
Restitution	247	14	8	4	8	0	5	0	3	1	3	3	0	2	54	2
Diversion	1,117	0	5	295	3	0	2	106	0	49	1	1	12	13	0	3
CUSTODY TO																
Public Inst. Delinquents	244	9	0	26	1	0	0	0	3	0	62	4	5	7	11	7
Other Public Institution	60	2	0	15	0	5	0	0	0	0	0	0	0	2	3	0
Public Agency Institution	1,417	79	31	61	29	35	15	13	144	41	125	71	6	14	13	11
Private Agency/Institution	37	0	0	5	0	0	0	0	0	0	11	0	0	2	1	0
Individual	213	27	5	6	5	0	13	2	18	0	0	6	18	0	5	3
Other	93	0	0	1	0	4	0	0	3	1	15	5	1	0	0	1
Inapplicable	42	20	0	0	0	0	1	0	1	0	0	0	0	0	0	0
Missing Information	0	0	0	0	0	0	0	0	0	0	0	0	0	0	0	0
TOTAL	22,784	633	200	2,693	619	551	247	582	615	236	3,911	495	124	392	388	231

67

DISPOSITION ALL JUDICIAL DISTRICTS
1980

	J.D. 16	J.D. 17	J.D. 18	J.D. 19	J.D. 20	J.D. 21	J.D. 22	J.D. 23	J.D. 24	J.D. 25	J.D. 26	J.D. 27	J.D. 28	J.D. 29
Waived to Criminal Court	1	0	21	2	2	1	1	2	1	1	1	7	1	13
NOT SUBSTANTIATED Dismissed	39	7	1,119	101	66	33	20	32	7	35	13	28	44	544
COMPLAINT SUBSTANTIATED														
Dismissed-Warned	46	15	127	10	21	125	4	128	4	47	13	37	18	902
Held Open	6	3	8	2	2	5	1	6	1	2	10	1	4	13
Probation	85	60	500	166	122	70	44	23	30	101	57	58	161	273
Referred Elsewhere	26	24	361	59	39	26	16	10	20	63	47	69	10	2,441
Runaway Returned	8	2	5	11	8	0	1	40	0	0	2	0	8	82
Other	10	4	11	34	9	10	9	59	7	11	3	16	4	0
Restitution	9	0	46	4	4	1	2	47	3	2	1	21	0	0
Diversion	3	0	570	3	3	0	0	23	0	0	1	24	0	0
CUSTODY TO														
Public Inst. Delinquents	5	1	8	6	1	1	2	0	1	21	0	19	3	47
Other Public Institution	0	1	8	2	1	13	1	0	0	2	1	2	1	11
Public Agency/Institution	10	2	239	42	28	1	9	17	11	11	2	26	39	292
Private Agency/Institution	1	1	12	1	0	1	0	0	0	1	0	0	0	1
Individual	9	0	4	10	1	1	2	1	3	4	4	2	17	47
Other	8	3	2	1	0	0	1	0	3	1	0	0	0	43
Inapplicable	0	2	0	2	0	0	12	0	0	1	0	0	0	3
Missing Information	0	0	0	0	0	0	0	0	0	0	0	0	0	0
TOTAL	266	125	3,041	456	307	288	125	388	91	303	155	310	310	4,702

68

APPENDIX B
Estimated Juvenile Population
by County, 1980

ESTIMATED JUVENILE POPULATIONS BY COUNTY

1980

Preceding page blank

71

COUNTY	AREA (SQ. MILES)	1980 TOTAL POPULATION *	JUVENILE POPULATION **	JUVENILE % TOTAL POPULATION
Allen	505	16,174	4,184	11.9
Anderson	557	8,381	2,265	27.0
Atchison	421	20,108	5,280	26.3
Barber	1,146	6,420	1,537	23.9
Barton	865	38,011	8,758	23.0
Bourbon	639	16,565	3,783	22.8
Brown	578	12,320	2,762	22.4
Butler	1,443	50,841	11,989	23.6
Chase	774	3,300	822	24.9
Chautauqua	647	5,067	829	16.4
Cherokee	587	25,450	5,704	22.4
Cheyenne	1,027	3,911	1,013	25.9
Clark	983	2,674	573	21.4
Clay	658	9,903	2,348	23.7
Cloud	711	13,562	3,126	23.0
Coffey	656	8,629	2,206	25.7
Comanche	800	2,662	588	22.0
Cowley	1,136	34,651	8,758	25.3
Crawford	598	38,327	8,889	23.2
Decatur	899	4,903	1,119	22.8
Dickinson	855	22,591	5,309	23.5
Doniphan	379	9,158	2,445	26.7
Douglas	468	74,257	17,063	23.0
Edwards	614	4,257	1,012	23.8
Elk	647	4,010	762	19.0

ESTIMATED JUVENILE POPULATIONS BY COUNTY

1980

COUNTY	AREA (SQ. MILES)	1980 TOTAL POPULATION *	JUVENILE POPULATION **	JUVENILE % TOTAL POPULATION
Ellis	900	25,724	7,811	30.4
Ellsworth	718	7,034	1,387	19.7
Finney	1,302	29,880	7,990	26.7
Ford	1,083	25,128	7,052	28.1
Franklin	577	21,714	5,784	26.6
Geary	399	23,362	8,038	34.4
Gove	1,070	3,834	1,258	32.8
Graham	891	4,408	1,176	26.7
Grant	568	7,083	2,482	35.0
Gray	869	5,004	1,538	30.7
Greeley	783	1,997	524	26.2
Greenwood	1,150	8,604	1,933	22.5
Hamilton	992	3,006	724	24.0
Harper	801	7,957	1,660	20.9
Harvey	540	28,891	7,911	27.4
Haskell	579	3,914	1,410	36.0
Hodgeman	860	2,551	634	24.9
Jackson	656	11,590	3,648	31.5
Jefferson	549	14,406	4,247	29.5
Jewell	907	5,623	1,322	23.5
Johnson	476	261,830	76,741	29.3
Kearny	853	3,500	1,241	35.5
Kingman	865	9,500	2,439	25.7
Kiowa	720	4,059	908	22.4
Labette	654	24,871	7,183	28.9

ESTIMATED JUVENILE POPULATIONS BY COUNTY

1980

COUNTY	AREA (SQ. MILES)	1980 TOTAL POPULATION *	JUVENILE POPULATION **	JUVENILE % TOTAL POPULATION
Lane	720	2,807	596	21.2
Leavenworth	465	53,603	15,701	29.2
Lincoln	726	4,479	984	22.0
Linn	605	8,293	2,202	26.6
Logan	1,073	3,680	967	26.3
Lyon	852	38,852	9,101	23.4
Marion	895	15,908	3,223	20.3
Marshall	959	13,576	3,337	24.6
McPherson	911	26,281	6,742	25.7
Meade	976	5,040	1,212	24.0
Miami	591	22,080	6,150	27.9
Mitchell	716	8,152	2,066	25.3
Montgomery	649	44,266	10,528	23.8
Morris	707	6,566	1,638	24.9
Morton	725	3,373	1,149	34.0
Nemaha	709	11,961	3,319	27.7
Neosho	587	17,886	4,938	27.6
Ness	1,081	4,639	1,156	24.9
Norton	880	7,169	1,582	22.0
Osage	721	14,468	4,246	29.3
Osborne	898	6,182	1,331	21.5
Ottawa	723	6,320	1,704	27.0
Pawnee	749	7,795	1,837	23.6
Phillips	906	7,930	2,001	25.2
Pottawatomie	850	14,033	4,109	29.3

ESTIMATED JUVENILE POPULATIONS BY COUNTY

1980

COUNTY	AREA (SQ. MILES)	1980 TOTAL POPULATION *	JUVENILE POPULATION **	JUVENILE % TOTAL POPULATION
Washington	891	8,891	2,181	24.5
Wichita	724	3,190	1,124	35.2
Wilson	574	11,888	3,029	25.5
Woodson	504	4,752	976	20.5
Wyandotte	150	181,218	51,273	28.3
TOTAL	82,048	2,381,422	643,801	27.0

* Kansas State Board of Agriculture, "Population of Kansas: As Reported by County Appraisers." Topeka, Kansas, 1979.

** Juvenile estimates for ages 0 - 17 years old from the National Center for Juvenile Justice, Pittsburgh, Pennsylvania.

APPENDIX C
Glossary of Terms
1980

Preceding page blank

GLOSSARY

- Adjudication - the process of deciding whether or not a youth fits into one of the categories of delinquent, miscreant, deprived, wayward or truant.
- Criminal-type offender - a child who has been charged with, or adjudicated as, being a delinquent or miscreant child.
- Delinquent child - a child less than 18 years of age who does an act which, if done by a person 18 years of age or over, would make such a person liable to be arrested and prosecuted for the commission of a felony.
- Deprived - a child less than 18 years of age:
(1) who is without proper parental care or control, subsistence, education... or control necessary for such child's physical, mental or emotional health, and the deprivation is not due solely to the lack of financial means of such child's parents, guardian or other custodian;
(2) who has been placed for care or adoption in violation of law;
(3) who has been abandoned or physically, mentally, emotionally abused or neglected or sexually abused by his or her parent, guardian or other custodian;
(4) who is without a parent, guardian or legal custodian;
- Juvenile offender - a child, subject to the jurisdiction of the Kansas juvenile code, that is an accused or adjudicated delinquent, miscreant, wayward or deprived child or a traffic offender or truant.
- Miscreant child - a child less than 18 years of age who does an act which, if done by a person 18 years of age or over, would make such person liable to be arrested and prosecuted for the commission of a misdemeanor; or the violation of any city ordinance or county resolution; or who escapes from or runs away from any lawful court ordered placement.
- Petition - a formal statement of the allegation(s) alleging a child to be delinquent, miscreant, deprived, wayward or truant.
- Status offender - a child alleged or adjudicated to be a wayward or deprived child or a truant.

Traffic offender

- a child under 14 years of age who does an act which, if done by a person 14 years of age or over, would make such person liable to be arrested and prosecuted for the violation of specific traffic offenses. Whenever a child of 14 years of age or older is charged with a traffic offense, the prosecution of such offense shall not be heard pursuant to the juvenile code but shall be commenced in a court of competent jurisdiction in the same manner as prosecutions involving adults.

Truant

- a child who, being by law required to attend school, absents himself or herself therefrom to the extent of being a truant.

Wayward child

- a child less than 18 years of age:
(1) whose behavior is injurious to his or her welfare;
(2) who deserted his or her home without good or sufficient cause;
(3) who is habitually disobedient to the reasonable and lawful commands of his or her parent, guardian or other lawful custodian;
(4) who does an act the commission of which by persons under the age of 18 years is specifically prohibited and made unlawful by state law, city ordinance or county resolution.

APPENDIX D

Juvenile Court Statistical Card
1980

Preceding page blank

A. COURT _____ <input type="checkbox"/>		D. DATE OF BIRTH - <input type="checkbox"/> <input type="checkbox"/> <input type="checkbox"/> <input type="checkbox"/> <input type="checkbox"/> <input type="checkbox"/> mo. day yr.
B. CHILD'S NAME OR NUMBER _____ (LAST) (FIRST) (MIDDLE)		E. AGE AT TIME OF REFERRAL - <input type="checkbox"/>
C. ADDRESS _____ Area Code or Census Tract <input type="checkbox"/> <input type="checkbox"/> <input type="checkbox"/>		F. SEX: 1 - Male 2 - Female <input type="checkbox"/>
ENTER ONLY ONE CODE IN THE DESIGNATED CODE BOX FOR EACH MAJOR CATEGORY FROM "H" TO "O"		G. RACE: 1 - White 2 - Black 3 - Indian 4 - Other <input type="checkbox"/>
H. DATE OF REFERRAL <input type="checkbox"/> <input type="checkbox"/> <input type="checkbox"/> <input type="checkbox"/> <input type="checkbox"/> <input type="checkbox"/> mo. day yr.	L. REASON REFERRED <input type="checkbox"/> <input type="checkbox"/> Offenses applicable to both juveniles and adults (excluding traffic) 01 Murder and non-negligent manslaughter 02 Manslaughter by negligence 03 Forcible rape 04 Robbery: Purse snatching by force 05 Robbery: All except purse snatching 06 Assault: Aggravated 07 Assault: All except aggravated 08 Burglary - breaking or entering 09 Auto theft: Unauthorized use 10 Auto theft: All except unauthorized use 11 Larceny: Shoplifting 12 Larceny: All except shoplifting 13 Weapons - carrying, possessing, etc. 14 Sex offenses (except forcible rape) 15 Violation of drug laws: Narcotic 16 Violation of drug laws: All except narcotic 17 Drunkenness 18 Disorderly conduct 19 Vandalism 20 Other (Specify) _____ 21 Arson 22 Trespassing	M. MANNER OF HANDLING <input type="checkbox"/> 1 Without Petition 2 With Petition
I. REFERRED BY <input type="checkbox"/> 1 Law Enforcement Agency 2 School Department 3 Social Agency 4 Probation Officer 5 Parents or Relatives 6 Other Court 7 Other Source (Specify) _____	J. PRIOR DELINQUENCY (Excluding Traffic) REFERRALS a. This Calendar Year - <input type="checkbox"/> 0 1 2 3 4 5 or more referrals b. In Prior Years - <input type="checkbox"/> 0 1 2 3 4 5 or more referrals	N. DATE OF DISPOSITION <input type="checkbox"/> <input type="checkbox"/> <input type="checkbox"/> <input type="checkbox"/> <input type="checkbox"/> <input type="checkbox"/> mo. day yr.
K. CARE PENDING DISPOSITION <input type="checkbox"/> <input type="checkbox"/> 00 No Detention or Shelter Care Overnight Detention or Shelter Care Overnight or Longer in: 01 Jail or Police Station 02 Detention Home 04 Foster Family Home 08 Other Place (Specify) _____ In this category ("K") if more than one code is applicable, add the appropriate codes and enter total sum in coding box.	Offenses applicable to juveniles only (excluding traffic) 31 Running away 32 Truancy 33 Violation of curfew 34 Ungovernable behavior 35 Possessing or drinking of liquor 36 Other (Specify) _____ Traffic offenses 41 Driving while intoxicated 42 Hit and run 43 Reckless driving 44 Driving without a license 45 All other traffic (Specify) _____ Neglect (abuse, desertion, inadequate care, etc.) 51 Abuse 52 All other neglect (Specify) _____ Special proceedings (adoption, consent to marry, etc.) 61 Specify _____	O. DISPOSITION <input type="checkbox"/> <input type="checkbox"/> 00 Waived to Criminal Court Complaint Not Substantiated 01 Dismissed: Not Proved or Found Not Involved Complaint Substantiated No Transfer of Legal Custody 11 Dismissed: Warned, Adjusted, Counseled 12 Held Open Without Further Action 13 Probation Officer to Supervise 14 Referred to Another Agency or Individual for Supervision or Service 15 Runaway Returned to _____ 16 Other (Specify) _____ Transfer of Legal Custody to: 21 Public Institution for Delinquents 22 Other Public Institution 23 Public Agency or Department (Including Court) 24 Private Agency or Institution 25 Individual 26 Other (Specify) _____ 99 Inapplicable - Specify Proceedings

END