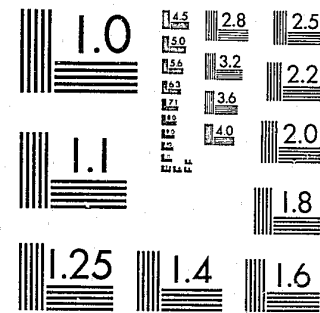


National Criminal Justice Reference Service

ncjrs

This microfiche was produced from documents received for inclusion in the NCJRS data base. Since NCJRS cannot exercise control over the physical condition of the documents submitted, the individual frame quality will vary. The resolution chart on this frame may be used to evaluate the document quality.



MICROCOPY RESOLUTION TEST CHART
NATIONAL BUREAU OF STANDARDS-1963-A

Microfilming procedures used to create this fiche comply with the standards set forth in 41CFR 101-11.504.

Points of view or opinions stated in this document are those of the author(s) and do not represent the official position or policies of the U. S. Department of Justice.

National Institute of Justice
United States Department of Justice
Washington, D. C. 20531

3/1/83

85676



A Research and Statistics Division Report

RAPE IN ARKANSAS

1980

U.S. Department of Justice
National Institute of Justice

This document has been reproduced exactly as received from the person or organization originating it. Points of view or opinions stated in this document are those of the authors and do not necessarily represent the official position or policies of the National Institute of Justice.

Permission to reproduce this copyrighted material has been granted by
**Arkansas Crime Information
Center**

to the National Criminal Justice Reference Service (NCJRS).

Further reproduction outside of the NCJRS system requires permission of the copyright owner.

October, 1981

Arkansas Crime Information Center
One Capitol Mall
Little Rock, AR 72201

PREFACE

The definition of rape (Arkansas Criminal Code; §41-1803; pages 129-130; effective January, 1976) is:

A person commits rape if he engages in sexual intercourse or deviate sexual activity with another person:

- (a) by forcible compulsion; or*
- (b) who is incapable of consent because he is physically helpless; or*
- (c) who is less than eleven (11) years old.*

The definition of forcible rape in the Uniform Crime Reporting (UCR) Program is:

Forcible rape is the carnal knowledge of a female through the use of force or the threat of force. Assaults to commit forcible rape are also included; however, statutory rape (without force) is not counted in this category.

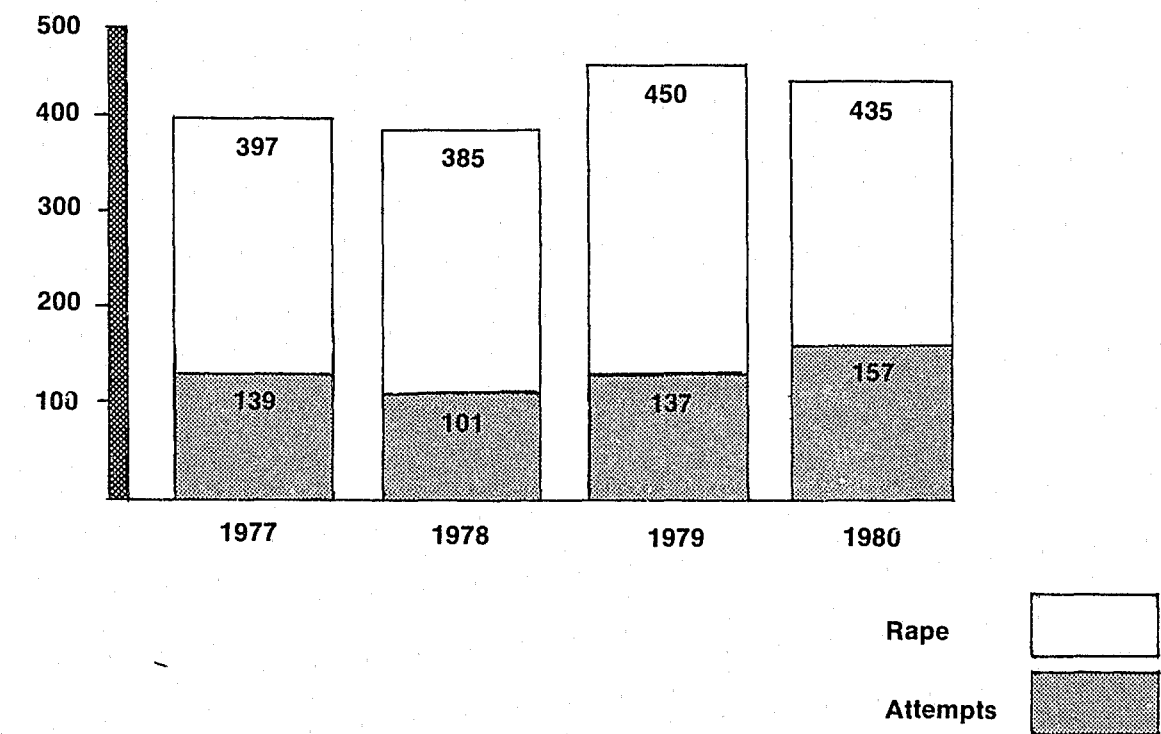
There is a wide disparity between these two definitions. This report utilizes the Uniform Crime Reporting definition of rape. The report includes all data collected, with the cooperation of law enforcement agencies from their offense reports, utilizing the UCR statistics reporting to the Arkansas Crime Information Center.

Throughout this report, except where noted, rape and attempted rape are combined statistically.

RAPE IN ARKANSAS, 1980

There were 592 rapes and attempted rapes in Arkansas reported through the Uniform Crime Reporting Program. Of these, 437 were rapes and 155 were attempted rapes reported by law enforcement agencies. There was an average of 197 law enforcement agencies submitting Uniform Crime Reports each month in 1980. This represents law enforcement reports covering 98.2% of the state population.

COMPARISON OF ACTUAL AND ATTEMPTED RAPES
1977 through 1980



RAPE, 1980

	NUMBER	% DISTRIBUTION
Rape	437	73.8
Attempted Rape	155	26.2
TOTAL	592	100.0

VICTIMS OF RAPE, 1980

The victims of rape in Arkansas were predominantly white (61%) and less than 25 years of age (64%). The youngest victim was 3 years old and the oldest, 84. The victim characteristics by race and age are:

VICTIM CHARACTERISTICS	NUMBER	% DISTRIBUTION
RACE		
White	359	60.6
Black	230	38.9
Unknown	3	.5
AGE		
Juveniles (under 18)	171	28.9
18-24	208	35.2
25-34	135	22.8
35 and over	73	12.3
Unknown	5	.8
TOTAL	592	100.0

VICTIM-OFFENDER RACE RELATIONSHIP

The first race listed is the race of the *victim*, and the second race is that of the *offender(s)*. For example: *white/black* means that the victim was white and the offender was black (1 or more).

VICTIM/OFFENDER(S) RACE	NUMBER	% DISTRIBUTION
White/White	236	39.9
Black/Black	222	37.5
Total Intraracial Rapes (same race)	458	77.4
White/Black	108	18.3
Black/White	5	.9
White/White & Black*	2	.3
Black/White & Black*	2	.3
Total Interracial Rapes (different races)	117	19.8
White/Unknown	12	2.0
Black/Unknown	2	.3
Unknown/Black	1	.2
Unknown/Unknown	2	.3
Total Unknown Rapes	17	2.8
TOTAL RAPE	592	100.0

*For a rape involving both white and black offenders, the offense is counted as interracial.

RAPE REPORTING TIME LAPSE

Approximately two-thirds of the rapes were reported to law enforcement agencies within four hours of the commission of the offense.

HOURS REPORTING TIME	NUMBER	% DISTRIBUTION
Less than 1	241	40.7
1 - 4	165	27.9
4+ - 8	46	7.8
8+ - 12	20	3.4
12+ - 24	30	5.0
More than 24	57	9.6
Unknown	33	5.6

RELATIONSHIP OF OFFENDER TO VICTIM

Almost one-half of all rapes and rape attempts were committed by persons unknown to the victim.

RELATIONSHIP	NUMBER	% DISTRIBUTION
Unknown to victim	285	48.1
Known by victim	255	43.1
Family member	41	6.9
Unknown (data not available)	11	1.9

NUMBER OF OFFENDERS PER RAPE

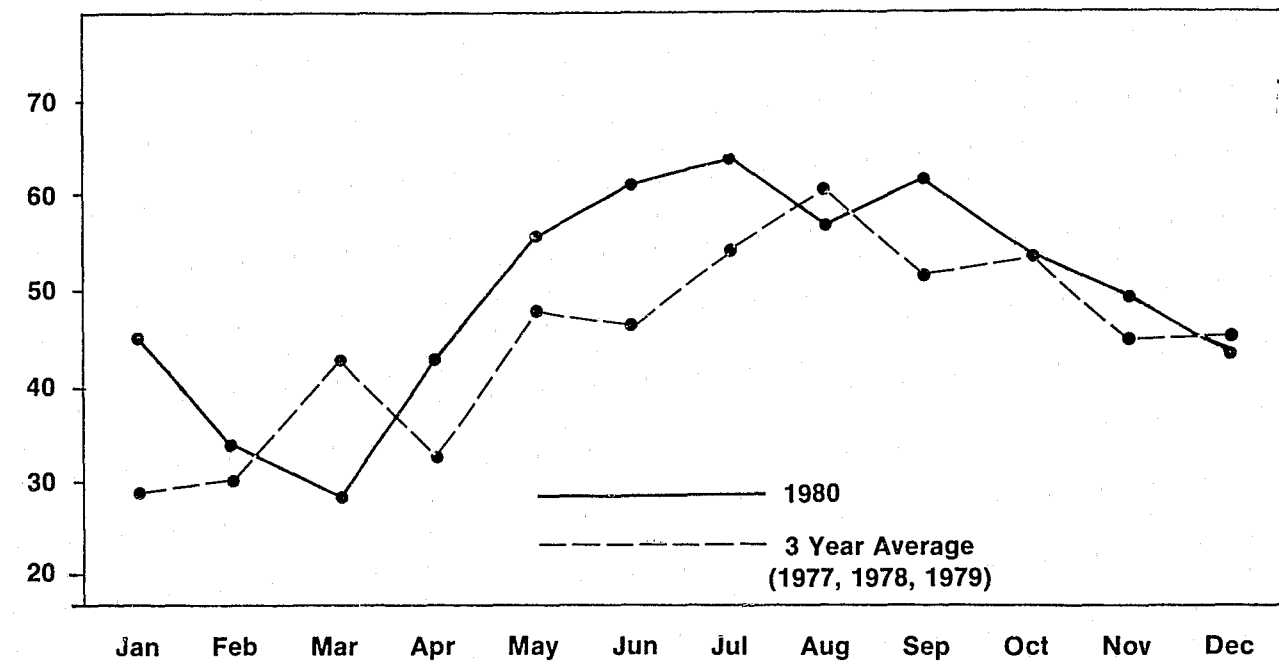
There were two or more offenders in only 13.7% of the rapes or attempted rapes.

OFFENDERS(S) PER OFFENSE	NUMBER	% DISTRIBUTION
One	508	85.8
Two	51	8.6
Three	21	3.5
Four	5	.9
More than four	4	.7
Unknown	3	.5

RAPES BY MONTH

(1980 compared to an average of the years 1977, 1978 and 1979)

In 1980 more rapes occurred in July than any other month. In 1979, September and October accounted for approximately one-fourth of the total rapes for the year. In 1977 and 1978 the largest number of rapes occurred in August.



MONTH	NUMBER	% DISTRIBUTION
January	45	7.6
February	33	5.6
March	27	4.6
April	42	7.1
May	56	9.4
June	61	10.3
July	64	10.8
August	57	9.6
September	61	10.3
October	53	9.0
November	49	8.3
December	42	7.1
Unknown	2	.3
TOTAL RAPES	592	100.0

RAPE BY DAY OF WEEK

Over one-third of the rapes were committed on Saturday and Sunday.

DAY OF RAPE	NUMBER	% DISTRIBUTION
Sunday	89	15.0
Monday	71	12.0
Tuesday	72	12.2
Wednesday	65	11.0
Thursday	80	13.5
Friday	84	14.2
Saturday	115	19.4
Unknown	16	2.7

RAPE BY TIME OF DAY

Almost one-third of all rapes, when time of day was known, were between 10 p.m. and 2 a.m.

TIME OF DAY	NUMBER	% DISTRIBUTION
A.M. 12:01 - 2	88	14.9
2:01 - 4	72	12.1
4:01 - 6	45	7.6
6:01 - 8	19	3.2
8:01 - 10	23	3.9
10:01 - Noon	20	3.4
P.M. 12:01 - 2	33	5.6
2:01 - 4	36	6.1
4:01 - 6	27	4.5
6:01 - 8	31	5.2
8:01 - 10	65	11.0
10:01 - Midnight	88	14.9
Unknown	45	7.6

RAPE SITUATIONS

LOCATION OF ORIGINAL CONTACT/ACOST:

The original contact between the victim and offender(s) in over one-half the rapes occurred in the victim's residence. The offender was a friend or acquaintance in approximately 43% of these cases, a stranger in 48% and a family member in 7%. In 2% of the cases, the relationship was not known.

ORIGINAL CONTACT/ACOST	NUMBER	% DISTRIBUTION
Victim's residence	311	52.5
Suspect's residence	21	3.5
Other residences	18	3.0
Automobiles	19	3.2
Public outdoor areas (streets, parks, etc.)	143	24.2
Bars and lounges	18	3.0
Fields, vacant lots, etc.	3	.5
Motels	7	1.2
All other locations	34	5.8
Unknown	18	3.0

WEAPON USED TO EXERT FORCE UPON VICTIM:

In approximately three out of four of the rapes, the offender used no external weapon. The use of knives or other sharp instruments has risen slightly compared to 1979.

WEAPON USED	NUMBER	% DISTRIBUTION
Firearm	56	9.5
Knife/Sharp instrument	92	15.5
Club/Blunt Instrument	8	1.4
Verbal threats, fists, etc.	418	70.6
Unknown	18	3.0

LOCATION OF ACTUAL RAPES AND ATTEMPTED RAPES:

Over one-half of the rapes occurred in the victim's residence.

LOCATION OF RAPE	NUMBER	% DISTRIBUTION
Victim's residence	303	51.2
Suspect's residence	36	6.1
Other residences	15	2.5
Automobiles	30	5.1
Public outdoor areas (streets, parks, etc.)	103	17.4
Fields, vacant lots, etc.	41	6.9
Motels	12	2.0
All other locations	40	6.8
Unknown	12	2.0

MEDICAL ATTENTION SOUGHT OR REQUIRED BY VICTIMS

Of the total 437 victims, (this does not include attempts) 372 (85.1%) received a routine medical examination. In 67 of the total 592 rapes, it was not known whether the victim sustained injuries. Of the 525 known, 448 (85%) were not injured, 31 (6%) received minor injuries, and 46 (9%) were seriously injured.

RAPE OFFENDERS (SUSPECTS)

Slightly over one-half of the offenders were between the ages of 20 and 30 years. If offenders of unknown age are removed from the sample, 78.8% of the remaining offenders are between age 20 and 30.

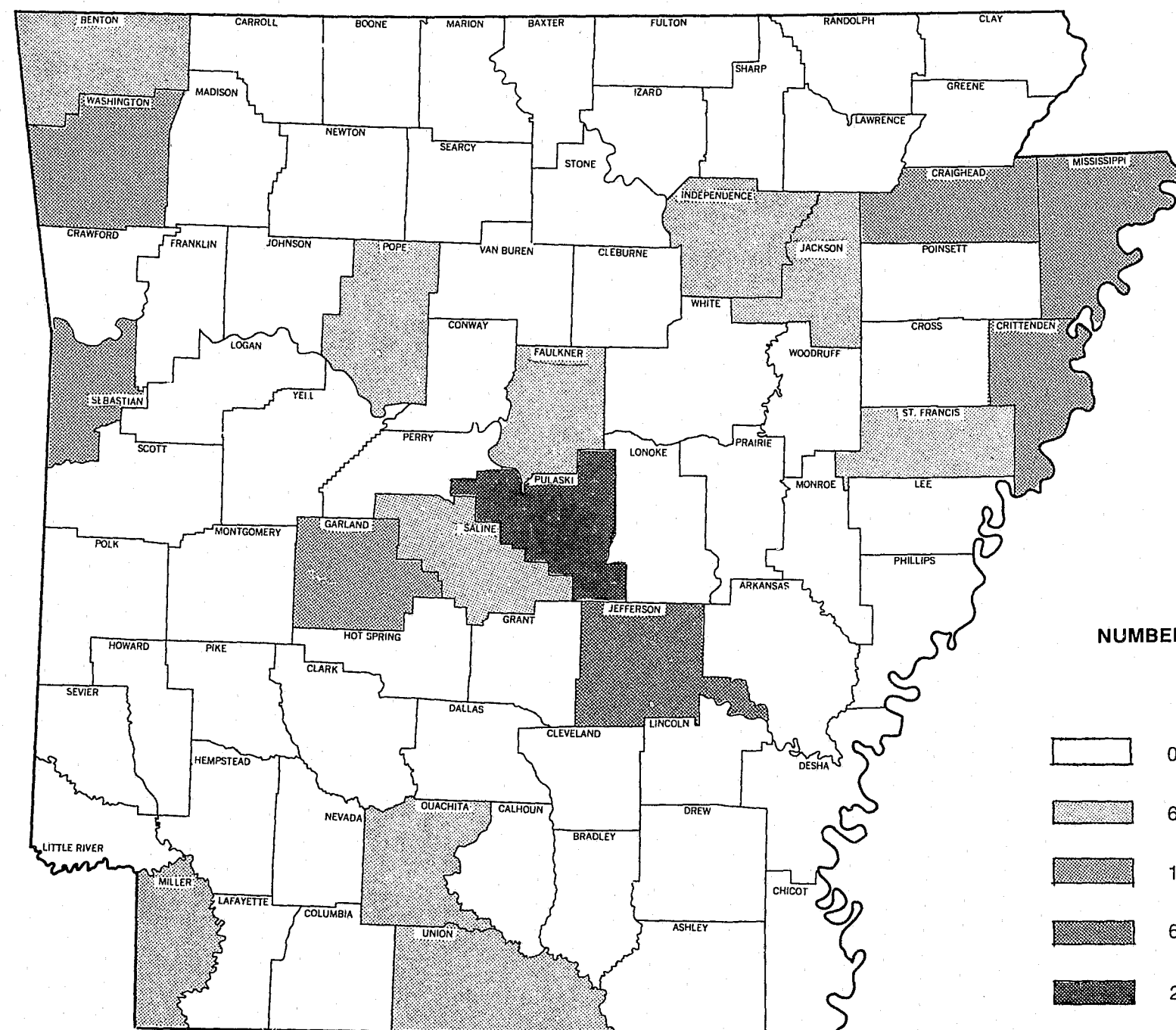
AGE OF OFFENDER	WHITE		BLACK		UNKNOWN	
Under 20	44	(6.1%)	69	(9.6%)	4	(.5%)
20 - 30	150	(20.9%)	241	(33.6%)	1	(.1%)
Over 30	75	(10.4%)	39	(5.4%)	13	(1.9%)
Unknown	16	(2.2%)	67	(9.3%)		
TOTAL	285	(39.6%)	416	(57.9%)	18	(2.5%)

RAPES BY COUNTY 1980

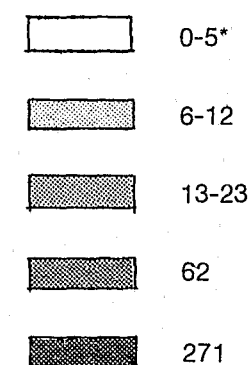
The following map shows the total number of rapes, by county. All non-shaded counties fall into one of the following categories:

1. The law enforcement agencies in the county reported 0-5 rapes.
2. The law enforcement agencies in the county did not submit Uniform Crime Reports.

The list following the map gives the number of rapes included in this report, by law enforcement agency.



NUMBER OF RAPES
1980



*Or Non Reporting

**NUMBER OF RAPES
(By Reporting Agency)**

ARKANSAS COUNTY	2	CROSS COUNTY	2
Sheriff	2	Wynne	2
ASHLEY COUNTY	4	DESHA COUNTY	1
Sheriff	2	Sheriff	1
Crossett	2		
BENTON COUNTY	6	DREW COUNTY	1
Sheriff	2	Monticello	1
Rogers	3		
Siloam Springs	1	FAULKNER COUNTY	7
		Sheriff	3
		Conway	4
BOONE COUNTY	2	FULTON COUNTY	1
Harrison	2	Sheriff	1
BRADLEY COUNTY	3		
Warren	3	GARLAND COUNTY	20
		Sheriff	8
CALHOUN COUNTY	1	Hot Springs	12
Sheriff	1		
CARROLL COUNTY	2	GREENE COUNTY	1
Eureka Springs	1	Paragould	1
Green Forest	1		
CHICOT COUNTY	2	HEMPSTEAD COUNTY	2
Dermott	2	Hope	2
CLARK COUNTY	5	HOT SPRING COUNTY	3
Arkadelphia	5	Sheriff	1
		Malvern	2
CLAY COUNTY	2	INDEPENDENCE COUNTY	7
Sheriff	2	Sheriff	5
		Batesville	2
COLUMBIA COUNTY	1	JACKSON COUNTY	7
Sheriff	1	Sheriff	2
		Newport	5
CONWAY COUNTY	1	JEFFERSON COUNTY	62
Sheriff	1	Sheriff	13
		Pine Bluff	49
CRAIGHEAD COUNTY	14	JOHNSON COUNTY	1
Sheriff	2	Sheriff	1
Jonesboro	12		
CRAWFORD COUNTY	3	LAFAYETTE COUNTY	1
Sheriff	2	Stamps	1
Van Buren	1		
CRITTENDEN COUNTY	19	LAWRENCE COUNTY	3
Sheriff	2	Sheriff	3
West Memphis	17		

NUMBER OF RAPES (continued)

LEE COUNTY	2	PRAIRIE COUNTY	1
Sheriff	2	Sheriff	1
LOGAN COUNTY	2	PULASKI COUNTY	271
Booneville	2	Sheriff	38
		Jacksonville	4
LONOKE COUNTY	4	Little Rock	189
Sheriff	4	North Little Rock	39
		Sherwood	1
MARION COUNTY	1		
Sheriff	1	RANDOLPH COUNTY	1
		Pocahontas	1
MILLER COUNTY	9		
Sheriff	1	ST. FRANCIS COUNTY	8
Texarkana	8	Sheriff	5
		Forrest City	3
MISSISSIPPI COUNTY	20		
Sheriff	11	SALINE COUNTY	7
Blytheville	3	Sheriff	2
Osceola	6	Benton	5
MONROE COUNTY	2		
Brinkley	2	SEBASTIAN COUNTY	23
		Sheriff	3
NEVADA COUNTY	4	Fort Smith	20
Sheriff	3		
Prescott	1	UNION COUNTY	7
		Sheriff	2
NEWTON COUNTY	1	El Dorado	4
Sheriff	1	Smackover	1
OUACHITA COUNTY	6	VAN BUREN COUNTY	1
Camden	6	Sheriff	1
PHILLIPS COUNTY	2	WASHINGTON COUNTY	13
Sheriff	1	Sheriff	2
Elaine	1	Fayetteville	6
		Johnson	1
PIKE COUNTY	1	Springdale	2
Sheriff	1	U of A Public Safety	2
POINSETT COUNTY	2	WHITE COUNTY	3
Sheriff	1	Sheriff	1
Trumann	1	Searcy	2
POLK COUNTY	4	YELL COUNTY	2
Sheriff	2	Dardanelle	2
Mena	2		
POPE COUNTY	9	STATE TOTAL	592
Sheriff	7		
Russellville	2		

END