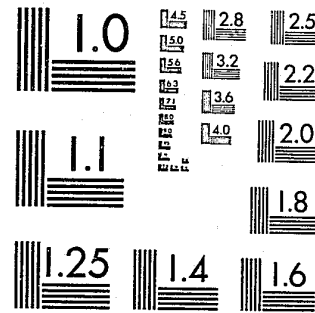


National Criminal Justice Reference Service



This microfiche was produced from documents received for inclusion in the NCJRS data base. Since NCJRS cannot exercise control over the physical condition of the documents submitted, the individual frame quality will vary. The resolution chart on this frame may be used to evaluate the document quality.



MICROCOPY RESOLUTION TEST CHART
NATIONAL BUREAU OF STANDARDS-1963-A

Microfilming procedures used to create this fiche comply with the standards set forth in 41CFR 101-11.504.

Points of view or opinions stated in this document are those of the author(s) and do not represent the official position or policies of the U. S. Department of Justice.

National Institute of Justice
United States Department of Justice
Washington, D. C. 20531

10/10/83

86899

REPORT ON THE JUDICIARY

1980

(20 O.S. 1971 § 16.11)

NCJRS

NCJRS

ACQUISITIONS



STATE OF OKLAHOMA

ADMINISTRATIVE OFFICE OF THE JUDICIARY

MARVIN C. EMERSON

ADMINISTRATIVE DIRECTOR

U.S. Department of Justice 86899
National Institute of Justice

This document has been reproduced exactly as received from the person or organization originating it. Points of view or opinions stated in this document are those of the authors and do not necessarily represent the official position or policies of the National Institute of Justice.

Permission to reproduce this copyrighted material has been granted by

Supreme Court of Oklahoma

to the National Criminal Justice Reference Service (NCJRS).

Further reproduction outside of the NCJRS system requires permission of the copyright owner.

"Only by the adoption of sound administration practices will the courts be able to meet the increased and increasing burdens placed on them. The time has passed when the court system will carry its load 'if each judge does his job'. There must also be organization and system so as to leave the judge to his job of judging."

Chief Justice Warren E. Burger

INTRODUCTION

Caution should be exercised in the interpretation of judicial statistics. The actual amount of judicial activity or output is extremely hard to quantify. Judges spend much of their time counseling, researching, traveling, and performing administrative tasks. These cannot be readily shown quantitatively. Moreover, no two cases are exactly alike although statistically they are considered equal. One case may be quite simple and disposed of rapidly, whereas another, an extremely complicated one, may require much more judicial time, research, and consideration.

Due to the uniqueness of judicial statistics and to the constraints considered, the data presented in the 1980 Report on the Judiciary, Statistical Appendix is in aggregate form only.

The data is compiled by either county, district or statewide levels. The Appendix contains sections for District Court Caseload data. Miscellaneous data, and Financial data.

The 1980 Report on the Judiciary, Statistical Appendix was compiled and published by the Office of the Administrative Director of Courts under the direction of Marvin C. Emerson, Administrative Director of the Courts. The report is funded by a grant from the Criminal Justice Services Division, Department of Economic and Community Affairs of funds from the Law Enforcement Assistance Administration.

The information compiled for the data in the 1980 Report on the Judiciary, Statistical Appendix is reported by the calendar year with the exception of the financial data which is compiled on fiscal year basis beginning July 1, and ending June 30, of the reporting year. The financial data for this edition is based on fiscal year 1980 activity.

SUMMARY OF CONTENTS

I. Oklahoma Court Structure:

An overview of the managerial and adjudicative functions of the Courts. This overview is illustrated with narrative and charts.

11. Oklahoma Appellate Courts:

A review of the 1980 caseload activity for the Supreme Court, Court of Appeals and Court of Criminal Appeals.

111. Oklahoma Court of Special Jurisdiction:

A synopsis of the membership and activity of the Courts of the Oklahoma Judiciary with special jurisdictions. These courts include the Court on the Judiciary, the Workers' Compensation Court, and the Court of Tax Review.

1V. Oklahoma Commissions of Special Cognizance:

This section provides a list of members and information relative to the 1980 activities of the Commissions of Special Cognizance — the Council on Judicial Complaints and the Judicial Nominating Commission.

V. Oklahoma District Court:

An overview analysis of the District Courts activity during 1980. Statistics are presented at the state level in several litigation classifications. Statics are also presented on a per Judge basis in relation to caseload.

VI. Financial Management:

An analysis of the fiscal operations of the Oklahoma Court System. All information in the section is compiled from fiscal year data for the fiscal year July 1, through June 30 of the reporting year.



SUPREME COURT OF OKLAHOMA
ADMINISTRATIVE OFFICE OF THE JUDICIARY
OKLAHOMA CITY, OKLAHOMA 73105

TOM J. McDANIEL
Director
Room One, State Capitol
AC 405-521-2318

November 8, 1982

CHARLES E. FERRELL JR.
Deputy Director
Suite 225
5005 N. Lincoln
AC 405 521-4505

NCJRS - LEAA
Acquisition Department No. 2
Box 6000
Rockville, MD 20850

Dear Sir:

Enclosed please find the Annual Report on the Judiciary, State of Oklahoma, for 1980. Please note that this is the last Report with data from a calendar year. Our next report will encompass the period July 1, 1981 through June 30, 1982.

Sincerely,

A handwritten signature in cursive script, appearing to read "Dale Hampton".

Dale Hampton
Statistician

DH:fw

Enclosure

TABLE OF CONTENTS

INTRODUCTION	V
1. OKLAHOMA COURT STRUCTURE	
Oklahoma Judicial System3
Jurisdiction of the Courts—Chart6
Administrative Organization—Chart7
Oklahoma Bar Association Membership—Chart9
11. OKLAHOMA APPELLATE COURTS	
The Supreme Court and Court of Appeals15
The Court of Criminal Appeals29
111. OKLAHOMA COURTS OF SPECIAL JURISDICTION	
Workers' Compensation Court41
The Court on the Judiciary42
The Court of Tax Review44
IV. COMMISSIONS OF SPECIAL COGNIZANCE	
The Council on Judicial Complaints49
The Judicial Nominating Commission51
V. OKLAHOMA DISTRICT COURTS	
Explanatory Narrative — The District Courts55
Narrative — The District Courts59
Maps:	
Administrative Judicial Districts61
Judicial Districts62
Principal Trial Court Locations63
Judges of the District Court64
Personnel Changes in the Judiciary69
Statewide Statistics of the District Court71
Statewide Summary81
Caseload Statistics by Judgeship85
Summary of Judicial Activity90
Judicial Retirement System91
Judicial Training Program95
Court Clerks of the District Courts101

VI. FINANCIAL MANAGEMENT

Judicial Funding Sources.....109
Funding Sources of Judiciary — Chart.....111
Oklahoma Judiciary Support Sources—Chart.....112
State Judicial Fund Transfers.....113
Expenses for Indigent Persons—Chart.....117
Expenditures for Indigent Persons—County Breakdown.....118
Expenditures Locally for Operation of District Courts.....119
County Law Libraries.....121
Operation of Law Libraries.....123

COURT STRUCTURE

OKLAHOMA JUDICIAL SYSTEM

In 1967 the Oklahoma Electorate adopted a Constitutional Amendment (Article V11) revamping the entire judicial system. On January 13, 1969, Oklahoma's Judicial Branch was transformed into a streamlined statewide system both in terms of adjudicative and managerial organization hierarchy.

Adjudicative Organization

Judicial power now stands vested in: The Senate sitting as a Court of Impeachment; the Supreme Court; Court of Criminal Appeals; Court of Appeals; Court on the Judiciary; Workers' Compensation Court; Court of Tax Review; District Courts, and Municipal Courts. At the Appellate Level, the Supreme Court handles civil and the Court of Criminal Appeals, criminal appeals. The Legislature established the Court of Appeals in 1971 to handle civil appeals assigned to it by the Supreme Court.

On the trial level, the State is presently divided into Twenty-six Judicial Districts, each consisting of an entire county or several contiguous counties. The District Court, our single-level trial bench of unlimited jurisdiction is staffed by Judges of three rank known as 1) District, 2) Associate, and 3) Special. Municipal Courts (city-operated) survived, but are limited to city ordinance (including traffic) prosecutions and are subject to further alteration or abolition by the Legislature.

Managerial Organization

In order to institutionalize the Judiciary as a service of government, new Article V11 endowed the Supreme Court with managerial authority over all other courts. The Chief Justice exercises this authority with the assistance of an administrative director and staff.

The next ranking managerial authority in the hierarchy is the Presiding Judge. In each of the nine Judicial Administrative Districts, the District and Associate District Judges elect one of their District Judges as Presiding Judge. This election procedure is defined in the Rules on Administration of the Courts, adopted by the Supreme Court on January 9, 1969. Furthermore, these rules authorize the Presiding Judge to hold managerial meetings and to individually assign Judges and support staff throughout his own Judicial Administrative District.

Subordinate to the Presiding Judge stands the Chief Judge, who marshals activities within his county. The Chief Judge must be a resident District Judge. This assures the only resident District Judge of being Chief Judge, the Presiding Judge designates who shall serve as Chief Judge or prescribes a rotation system. (Rules on Administration of the Courts).

This tri-level management system permits local divergence at any of the three levels so long as no rule at a subordinate level counters a practice or order prescribed by the superior level. The third and fourth charts of this section illustrate this managerial framework.

MARVIN C. EMERSON
Director
ADMINISTRATIVE OFFICE OF THE JUDICIARY

The creation of the Administrative Office of the Judiciary was authorized in 1967, by the Adoption of Article 7, § 6 of the Oklahoma Constitution. This Section of the Constitution provided for the Supreme Court to appoint an Administrative Director and staff to serve at its pleasure to assist the Chief Justice in his administrative duties and to assist the Court on Judiciary. In 1968, the Legislature provided for an Administrative Director of the Courts to have the responsibilities set forth in the Constitution.

The Administrative Director of the Courts is appointed by the Supreme Court to assist the Chief Justice in filling his constitutionally mandated responsibilities as the Administrative head of the Judiciary. The duties of the Administrator include: Overall budget and fiscal coordination of the judicial personnel in the State Court System, including Judges of the District Courts. Court Reporters and Court Clerks; assignments of active and retired Judges between judicial administrative districts subject to the approval of the Chief Justice; liaison officer for the Supreme Court with the legislative and executive departments, collect and publish comprehensive statewide judicial statistics; supervise the budgeting and expenditure of monies from the 77 court funds; receive and verify quarterly financial reports from Court Clerks on the receipt and expenditure of court fund monies; receive and deposit in the State Judicial Retirement System monies received from the 77 court funds; and manage LEAA grants of Federal Funds to the Judicial System. Other duties mandated by law include: Serve as Ex Officio Secretary to the Council on Judicial Complaints and act as Administrative Staff for the Council; assist the Judicial Nominating Commission; assist the Court on the Judiciary; assist the State Board of Examiners of Official Shorthand Reporters; and assign retired Judges as hearing officers for the State Employees Group Health and Life Insurance Board.

The duties of the Administrative Director are performed by the Director and a staff of (5) persons.

ROSS N. LILLARD, JR.
Clerk
CLERK OF THE SUPREME COURT

The office of the Clerk of the Supreme Court was created by Article 7 § 5 of the Oklahoma Constitution. The Clerk is appointed by and serves at the pleasure of the Supreme Court. The law requires the Clerk to keep the records, files and papers committed to his care, and record the judgments, decrees and orders of the Supreme Court, the Court of Criminal Appeals and the Court of Appeals.

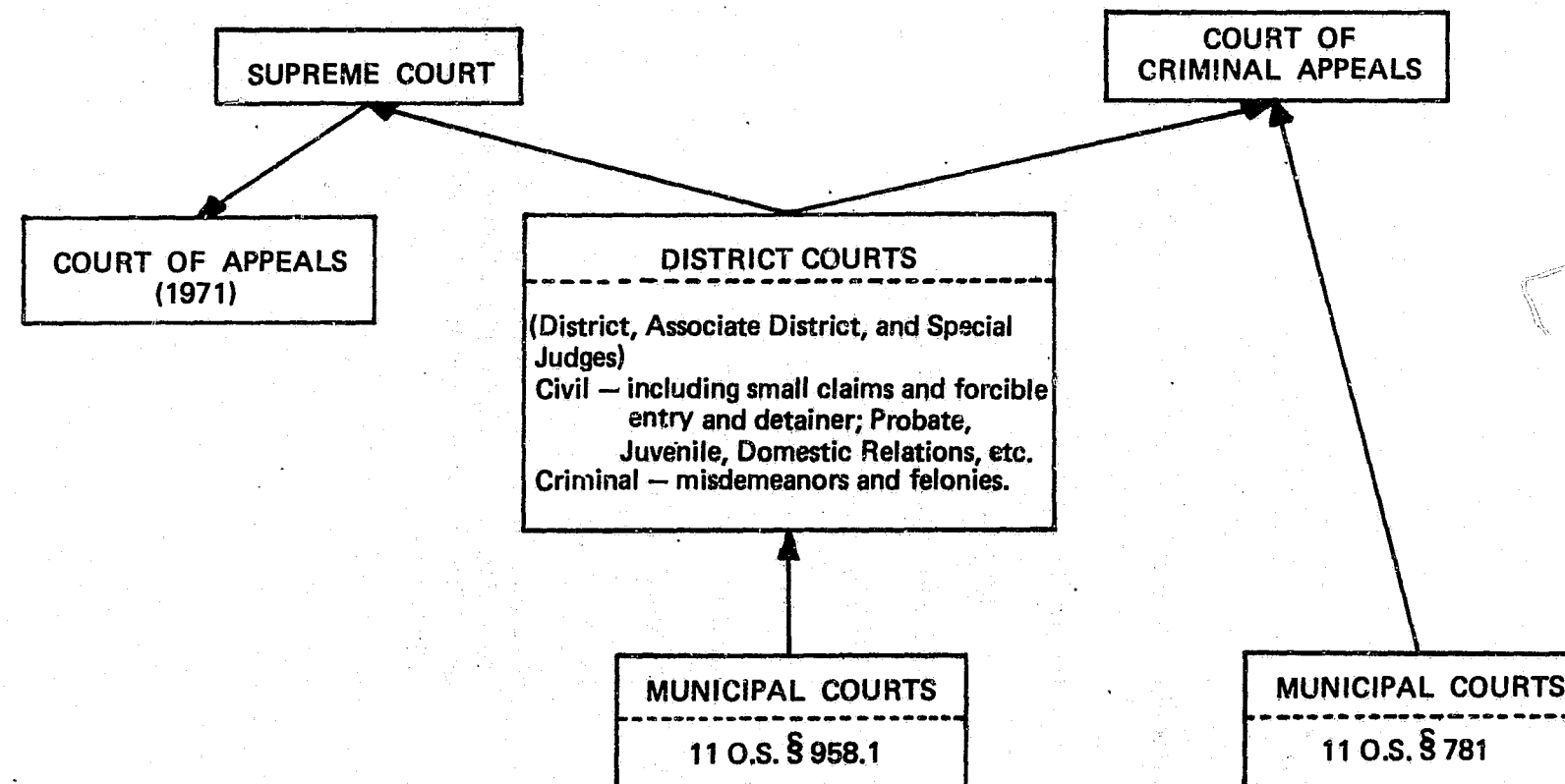
The duties of the office are performed by the Clerk of the Supreme Court and a staff of eight (8) persons.

S U M M A R Y

The Judicial power in Oklahoma is vested in the following Courts:

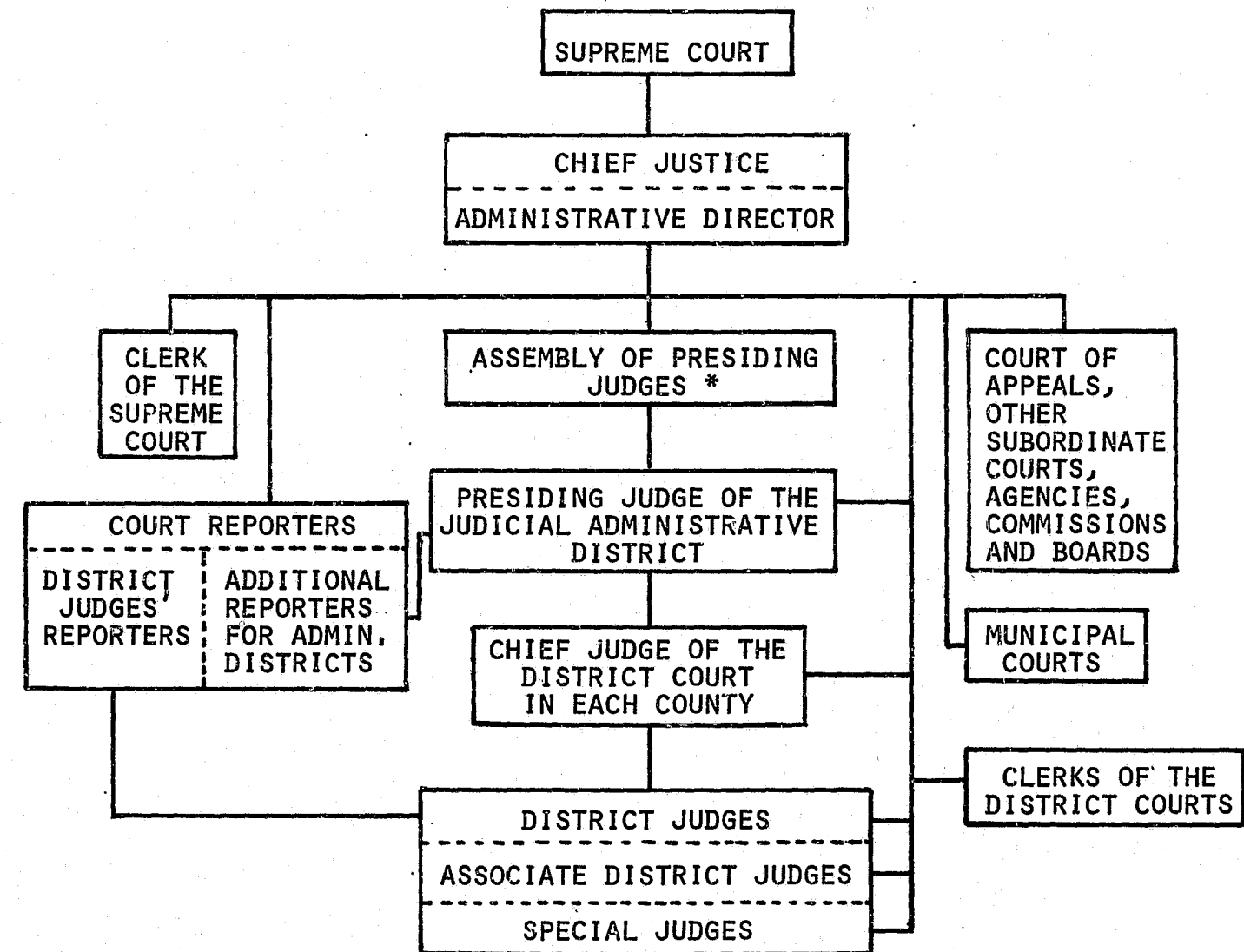
One	The Senate sitting as a Court of Impeachment
Two	The Supreme Court
Three	The Court of Criminal Appeals
Four	The Court of Criminal Appeals
Five	The Court on the Judiciary
Six	The Workers' Compensation Court
Seven	The Court of Tax Review
Eight	District Court
Nine	Municipal Courts with jurisdiction limited to criminal and traffic proceedings: (a) arising out of municipal ordinance violations or (b) infractions of regulations that are authorized by municipal ordinances.

JURISDICTION OF THE COURTS



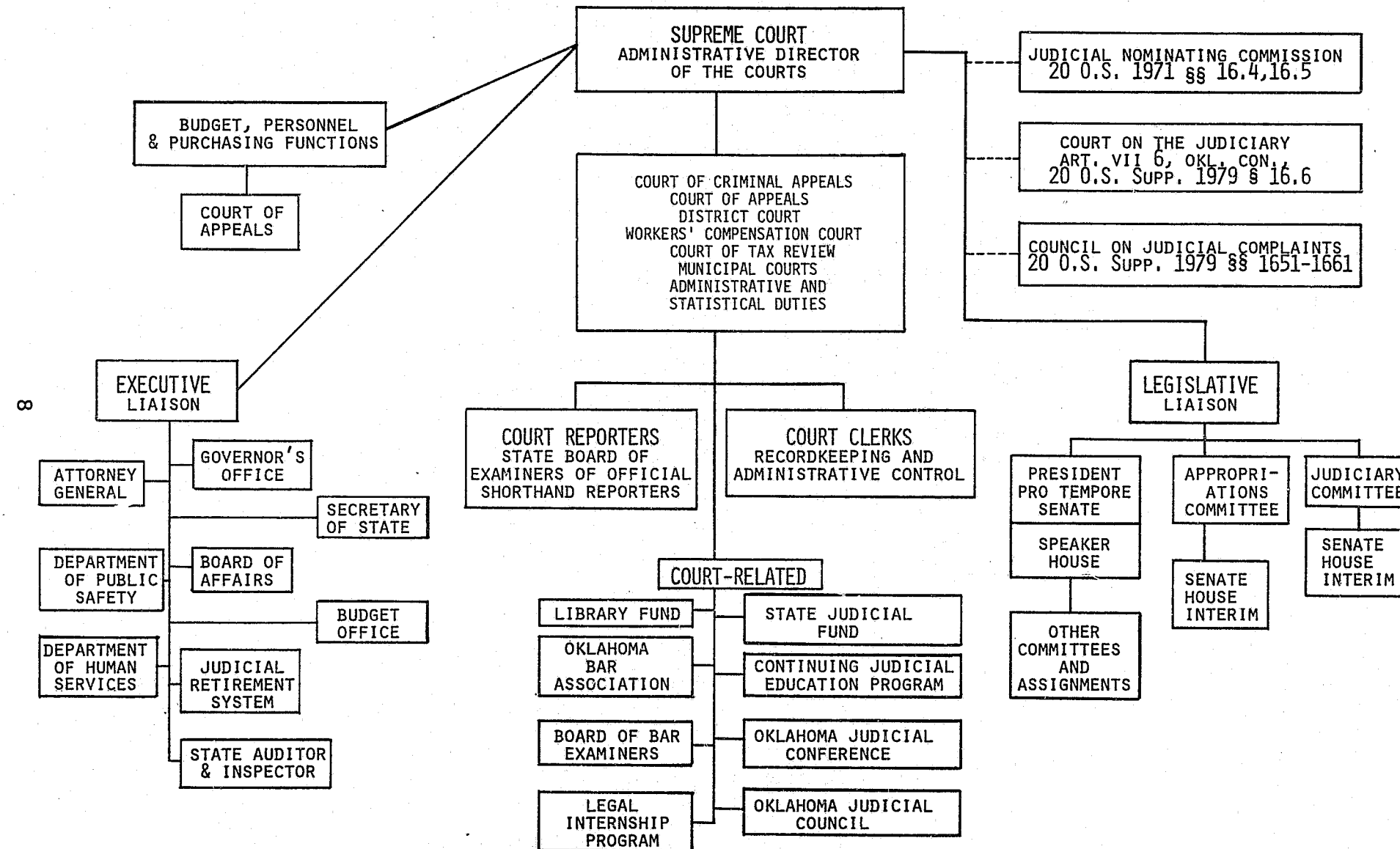
THE COURT ON THE JUDICIARY, THE WORKERS' COMPENSATION COURT, THE COURT OF TAX REVIEW
AND THE VARIOUS BOARDS, AGENCIES, AND COMMISSIONS THAT EXERCISE
ADJUDICATORY AUTHORITY ARE NOT SHOWN

ADMINISTRATIVE ORGANIZATION OF THE JUDICIAL SYSTEM



*convoked by Chief Justice Berry, September 1, 1971
20 O.S. 1971 §23, Subdiv. (2) and (3).

NON-ADJUDICATIVE (ADMINISTRATIVE) FUNCTIONS OF THE SUPREME COURT



MEMBERSHIP IN THE OKLAHOMA BAR ASSOCIATION

	1976	1977	1978	1979	1980
ACTIVE:					
Oklahoma County	1,970	2,117	2,251	2,362	2,479
Tulsa County	1,735	1,562	1,634	1,745	1,868
Rest of State	1,659	2,073	2,144	2,254	2,370
Out of State	1,018	1,486	1,477	1,561	1,603
Total Active:	6,382	7,238	7,506	7,919	8,320
SENIOR:					
Oklahoma County	166	180	191	198	198
Tulsa County	125	130	131	131	122
Rest of State	225	231	249	252	251
Out of State	81	96	113	123	131
Total Senior	597	637	684	704	702
MILITARY:					
Oklahoma County	4	2	2	1	1
Tulsa County	4	2	1	1	1
Rest of State	7	4	3	4	3
Out of State	81	60	37	33	31
Total Military:	96	68	43	39	36
ASSOCIATE:					
Oklahoma County	9	9	11	9	8
Tulsa County	4	5	5	6	8
Rest of State	11	11	11	12	13
Out of State	12	19	18	17	17
Total Associate:	36	44	45	44	46
INACTIVE:					
As Amended October, 1977, by Order of the Oklahoma Supreme Court: "Article 11, Section 2, MEMBERS CLASSIFIED, Members of the Association shall be divided into four classes, namely, (a) active members, (b) senior members, (c) associate members, and (d) military members."					
TOTAL:	7,774	7,987	8,278	8,706	9,115
LEGAL INTERNS:	359	312	303	283	260
GRAND TOTAL:	8,033	8,299	8,581	8,989	9,375

THE APPELLATE COURTS

EXPLANATORY NARRATIVE

This section provides statistical information on the appellate courts. There are two divisions: Supreme Court and Court of Appeals and Court of Criminal Appeals. The Supreme Court has a subordinate Court, the Court of Appeals, that hears cases as assigned by the Supreme Court. However, the Decisions made by the Court of Appeals cannot be held to formulate law, but are only relative to the Petition currently at issue.

Supreme Court and Court of Appeals

A narrative on the Supreme Court and Court of Appeals precedes maps denoting electoral district boundaries for the Justices and Judges. The first statistical chart illustrates 1972 — 1980 caseload activity of the two courts. It includes the number of cases assigned to and terminated in the Court of Appeals, and the cases pending in the Supreme Court as of December 31st of each year. The following bar graph shows the number of Supreme Court cases filed and terminated over the past seven years. During 1980, the Supreme Court had 1,636 filed which was the most cases ever filed in any year since statehood.

Court of Criminal Appeals

This sub-division consists of a narrative on the Court of Criminal Appeals, a map of the electoral districts for its Judges by counties, and population as well as several statistical charts. The first statistical chart analyzes appeals terminated by the Court and the method of their disposition. In 1980, 66.2% of the dispositions were by Order and 34.7% by Opinion. Of total cases filed in 1980, regular appeals accounted for 39.6% post conviction appeals, 66.7% and original proceedings 43.7%. The remaining charts in the section illustrate: dispositions by type of offense, annual increase or decrease in backlog, and county of origin for cases filed and terminated in 1980.

SUPREME COURT AND COURT OF APPEALS

SUPREME COURT*

The Supreme Court consists of nine Justices each of whom serves a six-year term. Retention is effected by a non-partisan, non-competitive statewide election. Vacancies are filled by gubernatorial appointment from a list of nominees selected by the Judicial Nominating Commission. The nominees are selected from applications received from the vacant Supreme Court Judicial District.

The Supreme Court's appellate jurisdiction includes all civil cases. The Court may issue writs of habeas corpus, mandamus, quo warranto, certiorari, prohibition and other remedial writs. It is also vested with general superintendent and administrative control over all other Courts in the state.

COURT OF APPEALS**

The Court of Appeals consists of six Judges, three in the Oklahoma City division, and three in the Tulsa division. One Judge is selected from each of the Six Congressional Districts by non-partisan ballots for a six-year term.

The Court of Appeals has power to dispose of all cases assigned to it by the Supreme Court. Decisions, when final, are neither appealable to the Supreme Court nor subject to re-examination by the other division of the Court of Appeals, but may be reviewed by the Supreme Court on certiorari, prohibition or any other necessary process.

Supreme Court rules prescribe the Court's procedure and practices, although the Court of Appeals may promulgate its own rules, not inconsistent with those of the Supreme Court. The Supreme Court clerk functions similarly to the Court of Appeals.

*Art. 7, Sec. 1, Okla. Const.

** 20 O.S. 1971 § 30.1 et seq.

JUSTICES OF THE SUPREME COURT

1980

ROBERT E. LAVENDER, Chief Justice

PAT IRWIN, Vice Chief Justice

DON B. BARNES, Justice

RALPH B. HODGES, Justice

JOHN B.. DOOLIN, Justice

ROBERT D. SIMMS, Justice

BEN T. WILLIAMS, Justice

RUDOLPH HARGRAVE, Justice

MARION P. OPALA, Justice



JUSTICES OF THE SUPREME COURT

Shown left to right, standing: The Honorable Rudolph Hargrave, Robert D. Simms, John B. Doolin, Marion P. Opala.
Seated: The Honorable Ralph B. Hodges, Pat Irwin (Vice Chief Justice), Robert E. Lavender (Chief Justice), Ben T. Williams, Don B. Barns.

JUDGES OF THE COURT OF APPEALS
1980

DIVISION I — OKLAHOMA CITY



Lester Reynolds
Presiding Judge



Dwain Box



Richard E. Romang
(Deceased 10—15—80)

DIVISION II — TULSA



Robert H. Neptune
(Retired 9—1—80)
Hon. John D. Boydston
Appointed 12—3—80

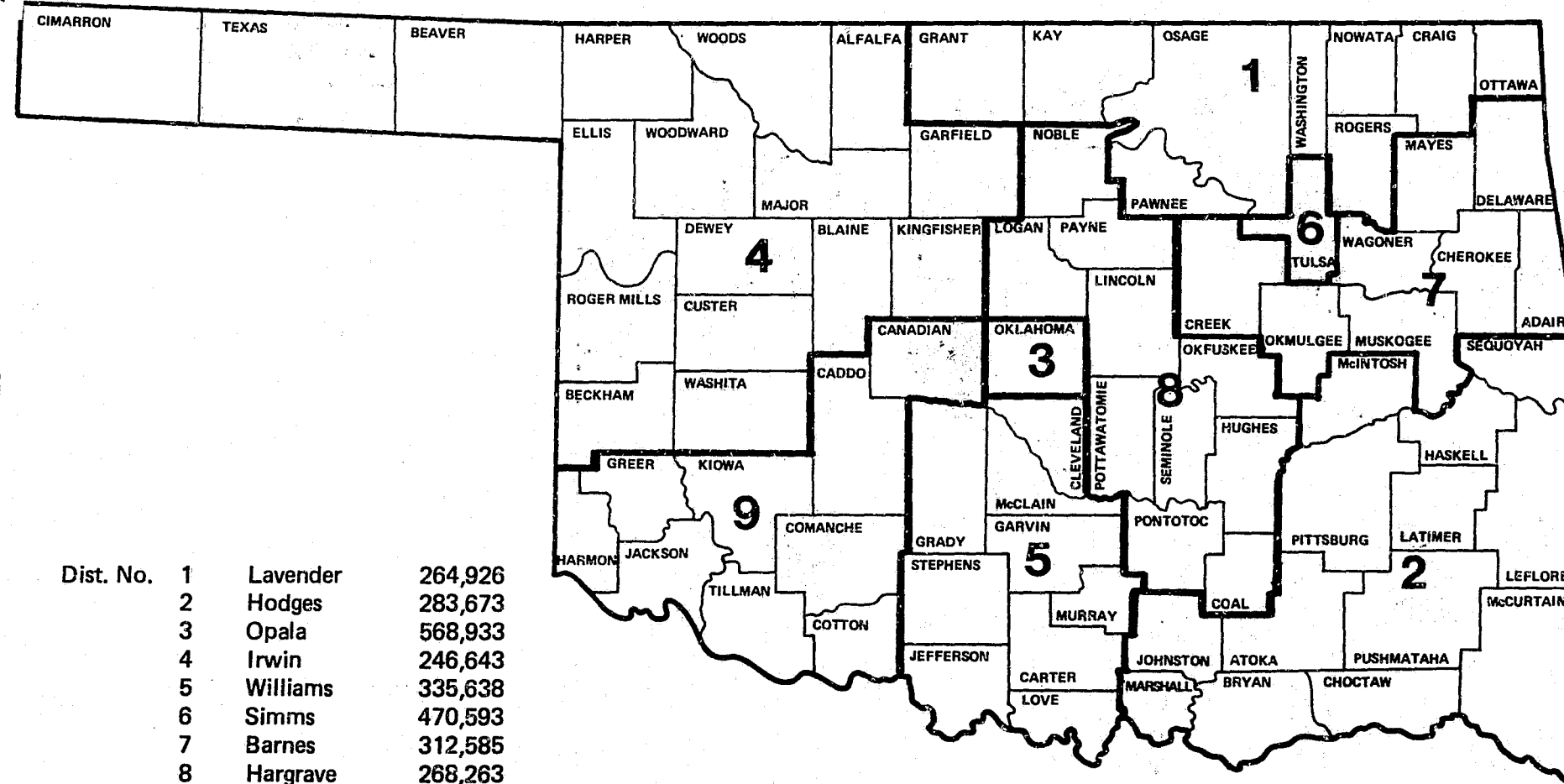


Paul W. Brightmire
Presiding Judge



Kenneth D. Bacon

SUPREME COURT JUDICIAL DISTRICTS



<u>Dist.</u>	<u>Judge</u>
1	Brightmire
2	Neptune
3	Bacon

26

<u>Dist.</u>	<u>Judge</u>
1	Brightmire
2	Neptune
3	Bacon
4	Reynolds
5	Box
6	Romang

IN THE SUPREME COURT OF THE STATE OF OKLAHOMA
ANNUAL REPORT FOR YEAR 1980
SUPREME COURT
INVENTORY OF CASES

Cases Pending January 1, 1980	1903
Cases filed in 1980	1636
	3539
Cases disposed of in 1980	1271
Total cases pending end of year (inventory)	2267
Increase in inventory during 1980	364

CATEGORY OF CASES DISPOSED OF

Opinions rendered in 1980	313	
Mandated without rehearing		217
Rehearing denied (102 rehearings filed in 1980)		96
Special Matters (210 filed in 1980)		190
Certiorari denied (Cert. 143 filed in 1980) Cert. figures include certified interlocutory orders		128
Disposition on recommendation by Referee: Cert. denied	85	
Cert. granted	33	
Disposition by dismissals, orders, etc.		409
Disposition by Court of Appeals		232
		1272
Bar Matters	108	
Written Dissents	30	
Special Writings	69	
Chief Justice Orders by Referee	671	

Cases at issue but not assigned at end of year	303
Backlog: Cases at issue plus those on assignment	533

COURT OF APPEALS

(Court of Appeals figures are included in Supreme Court inventory above)

Cases assigned by Supreme Court to Court of Appeals	369	
Disposition by settlement Conference, Div. 1		68
Opinions rendered, Court of Appeals		362
Certiorari filed		127
Certiorari denied		123
Certiorari granted		28
Certiorari dismissed (Some cases disposed of in 1980 were filed in 1979)		1
Cases mandated after final disposition by Court of Appeals		232

COURT OF CRIMINAL APPEALS

JUDGES OF THE COURT OF CRIMINAL APPEALS



Hon. Tom Cornish
Presiding Judge

Hon. Tom Brett

Hon. Hez Bussey

COURT OF CRIMINAL APPEALS*

Three Judges compose the Court of Criminal Appeals, one from each of three electoral districts. Retention for a six-year term is effected by a non-partisan, non-competitive statewide election.

The Court of Criminal Appeals has exclusive appellate jurisdiction in criminal cases. This includes the power to issue, hear and determine writs of habeas corpus, mandamus, quo warranto, certiorari, prohibition and other remedial writs.

*Art. 7, Sec. 1, Okla. Const.; 20 O.S..1971 § 31

COURT OF CRIMINAL APPEALS 1980 CASELOAD SUMMARY

CASES FILED IN 1980:

Regular Appeals	372
Post Conviction	143
Original Proceedings	<u>296</u>

Total Cases Filed: 856

CASES TERMINATED IN 1980:

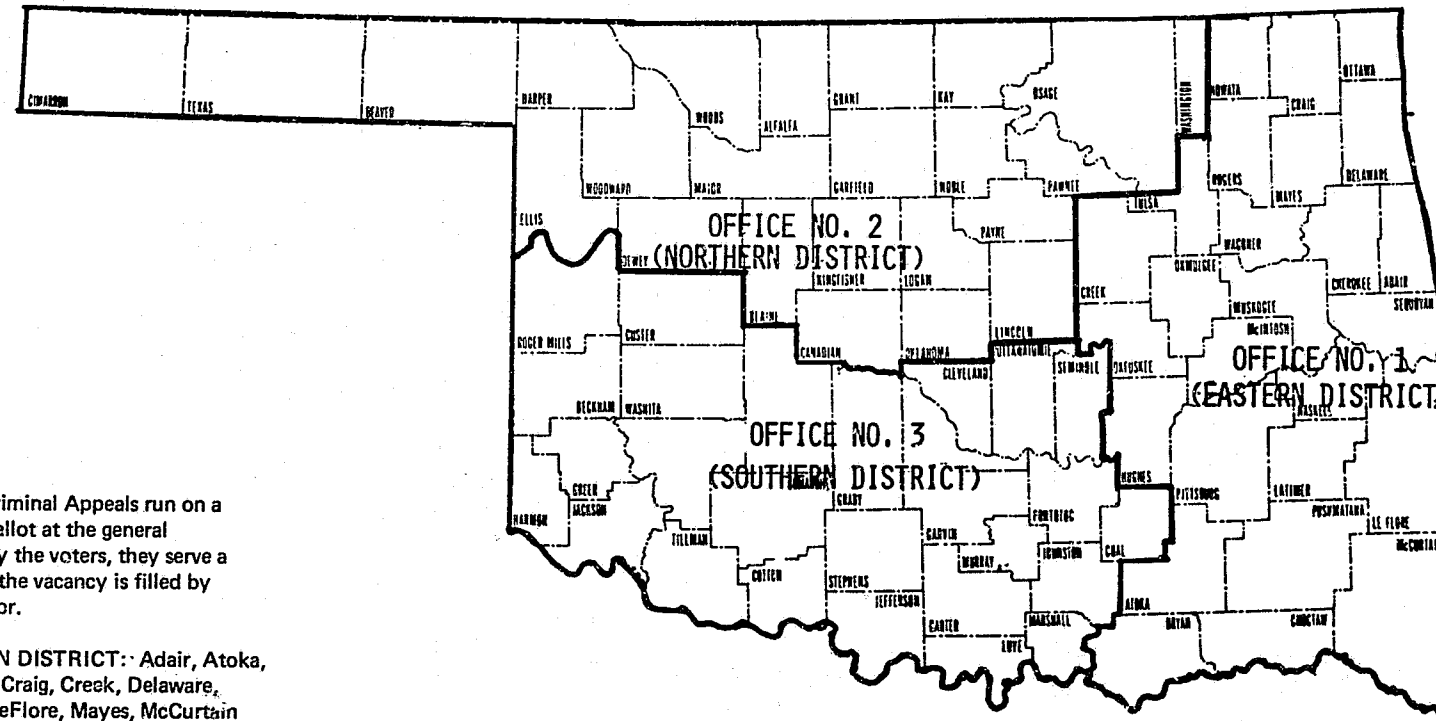
	<u>BY OPINION</u>	<u>BY ORDER</u>	<u>TOTAL TERMINATED</u>
CORRECTION			3
<u>REGULAR APPEALS:</u>			
Affirmed	153	1	154
Modified & Affirmed	6	0	6
Reversed	29	0	29
Dismissed	<u>3</u>	<u>11</u>	<u>14</u>
Totals:	191	12	203
<u>POST CONVICTION:</u>			
Granted	0	24	24
Affirming Denial	0	87	87
Dismissed	0	5	5
Reversed	0	8	8
Denied	0	3	3
Modified & Affirmed	<u>0</u>	<u>0</u>	<u>0</u>
Totals:	0	127	127
<u>ORIGINAL PROCEEDINGS</u>			
Granted	0	86	86
Dismissed	0	67	67
Denied	<u>1</u>	<u>133</u>	<u>134</u>
Totals:	1	286	287

Total Terminations By Opinion . . .	198	
Total Terminations By Order	407	
Corrections		15
Total Cases Terminated in 1980		620

PENDING CASES:

Total Cases Pending January 1, 1980	480
Total Cases Pending on December 31, 1980	518

COURT OF CRIMINAL APPEALS JUDICIAL DISTRICTS



Members of the Court of Criminal Appeals run on a non-partisan state-wide ballot at the general election only. If retained by the voters, they serve a six-year term. If rejected, the vacancy is filled by appointment of the Governor.

OFFICE NO. 1 — EASTERN DISTRICT: Adair, Atoka, Bryan, Cherokee, Choctaw, Craig, Creek, Delaware, Haskell, Hughes, Latimer, LeFlore, Mayes, McCurtain, McIntosh, Muskogee, Nowata, Okfuskee, Okmulgee, Ottawa, Pittsburg, Pushmataha, Rogers, Sequoyah, Tulsa, Wagoner. *(1,171,173).....Cornish

OFFICE NO. 2 — NORTHERN DISTRICT: Alfalfa, Beaver, Blaine, Canadian, Cimarron, Dewey, Ellis, Garfield, Grant, Harper, Kay, Kingfisher, Lincoln, Logan, Major, Noble, Oklahoma, Osage, Pawnee, Payne, Texas, Washington, Woods, Woodward. *(1,094,803).....Brett

OFFICE NO. 3 — SOUTHERN DISTRICT: Beckham, Caddo, Carter, Cleveland, Custer, Coal, Comanche, Cotton, Garvin, Grady, Greer, Harmon, Jackson, Jefferson, Johnston, Kiowa, Love, McClain, Marshall, Murray, Pontotoc, Pottawatomie, Roger Mills, Seminole, Stephens, Tillman, Washita. *(759,290).....Bussey

*Figures in parenthesis indicate 1980 official total population of Court of Criminal Appeals Judicial Districts.

COURTS OF SPECIAL JURISDICTION

COURTS OF SPECIAL JURISDICTION

The Courts of Special Jurisdiction are the Court on the Judiciary, the Workers' Compensation Court, and the Court of Tax Review. Narratives and lists of the 1980 Judges precede information on 1980 activities. That activity is characterized by filings, terminations and pending actions, as well as dollar amounts of awards by the Workers' Compensation Court.

WORKERS' COMPENSATION COURT*

The Workers' Compensation Court succeeded the State Industrial Court on July 1, 1978. The Court consists of seven Judges appointed by the Governor. The appointments are made from a list of three nominees for each position selected by the Judicial Nominating Commission from applications submitted by qualified applicants.

The Court hears and determines compensation claims in industrial accident cases. It has the power to formulate its own rules and procedures. The Court also has the power to conduct necessary investigations. The award of the Court is final and conclusive between the parties. The parties do have the right to appeal the decision to the Court en banc or the Supreme Court. The right to appeal does have a Statutory time limitation for filing with the proper Court.

The Judges of the Court are compensated equal to the salary paid to a District Judge. The Judges serve staggered six-year terms. The first full six-year terms begin July 1, 1980, for positions six and seven. The other five positions begin their full terms in the following terms of the positions. The Judges that served on the State Industrial Court serve their unexpired terms on the Workers' Compensation Court.

85 O.S. 1979 1.2

JUDGES OF THE WORKERS' COMPENSATION COURT

1980

CHRIS STRUM, Judge
(Term Expires 7/1/86)

BILL V. CROSS, Judge
(Term expires 7/1/84)

PATRICK C. RYAN, Presiding Judge
(Term expires 7/1/82)

JAMES M FULLERTON, Judge
(Term expires 7/1/82)

DICK LYNN, Judge
(Term expires 7/1/86)

CHARLES CASHION, Judge
(Term expires 7/1/84)

MARY ELIZABETH COX, Judge
(Term Expires 7/1/84)

ACTIVITIES OF THE WORKERS' COMPENSATION COURT

Year	Number of Filings Terminated	Amount of Award
1979	11,851	\$38,392,112
1980	17,801	50,872,336

COURT ON THE JUDICIARY

1980

APPELLATE DIVISION

JOE D. SHUMATE, Presiding Judge
Judicial District No. 21

RALPH B. HODGES
Justice, Supreme Court

TOM R. CORNISH, Vice-Presiding Judge
Court of Criminal Appeals

DONALD E. POWERS
Judicial District No. 23

RUDOLPH HARGRAVE, Justice
Supreme Court

RAYMOND W. GRAHAM, Judge
Judicial District No. 14

FARRELL M. HATCH, Judge
Lawyer

JACK R. PARR, Judge
Judicial District No. 7

CHARLES M. WILSON, Judge
Judicial District No. 2

TRIAL DIVISION

JOHN MALEY, Presiding Judge
Judicial District No. 24

WILLIAM W. MEANS, Vice-Presiding Judge
Judicial District No. 14

WILLIAM S. MYERS, JR.
Judicial District No. 7

JACK BROCK, Judge
Judicial District No. 5

ROBERT A. LAYDEN
Judicial District No. 18

DON H. HAMPTON, Judge
Judicial District No. 10

EDGAR H. PARKS, Judge
Lawyer

LLOYD H. HENRY, Judge
Judicial District No. 23

JOSEPH A. YOUNG, JR., Judge
Judicial District No. 4

COURT ON THE JUDICIARY*

The Court on the Judiciary consists of a Trial and an Appellate Division, with nine Judges per Division. Each Division selects one of its members as Presiding Judge.

The Trial Division may, for cause, (a) remove from office any Judge, State or Municipal**, (b) compulsorily retire a Judge, or (c) suspend a Judge without pay for any time period. Either the Defendant-Judge, or the specially appointed prosecutor may, within ten days of Judgment, appeal the Trial Division's Judgment to the Appellate Division.

*Article VII-A, Oklahoma Constitution

**20 O.S. Supp. 1978 § 1404

COURT ON THE JUDICIARY ACTIVITY

TRIAL DIVISION			APPELLATE DIVISION		
YEAR	FILED	TERMINATED	YEAR	FILED	TERMINATED
1976	3	3	1976	0	1
1977	1	1	1977	1**	1**
1978	1	1	1978	1**	1**
1979	1	1	1979	0	0
1980	2	2	1980	0	0

**Original action rather than an appeal from Trial Division

COURT OF TAX REVIEW

The Court of Tax Review is composed of three District Judges designated by the Governor, with the State Auditor serving as Clerk. The Court hears and determines all protests against allegedly illegal levies.

*68 O.S. 1971 § 24104

COURT OF TAX REVIEW
1980

RAY LEE WALL, Presiding Judge

ALMA B WILSON, Judge

HARDY SUMMERS, Judge

COURT OF TAX REVIEW ACTIVITY

1980

<u>FILED</u>	<u>TERMINATED</u>	<u>PENDING</u> <u>12/31/80</u>
5	5	0

COMMISSIONS OF SPECIAL COGNIZANCE

COMMISSIONS OF SPECIAL COGNIZANCE

The Commissions of Special Cognizance include the Council on Judicial Complaints and the Judicial Nominating Commission. Narratives and lists of members precede information on 1980 activities.

COUNCIL ON JUDICIAL COMPLAINTS

The Council on Judicial Complaints was established by an Act of the 1974 session of the Legislature*, effective May 23, 1974. The Council's duty is to investigate complaints concerning the misconduct of Judicial Officers. The Council may recommend to the Chief Justice of the Supreme Court the prosecution of a Judge before the Court on the Judiciary.

The Council is composed of three persons, two lawyers and one non-lawyer. the President Pro Tempore of the Oklahoma Senate, the Speaker of the Oklahoma House of Representatives and the President of the Oklahoma Bar Association each appoint one member. Members serve staggered five-year terms and can succeed themselves for one (1) term.

Members may claim \$25.00 for each day or fraction of a day served as well as reimbursement of travel expenses.

*20 O.S. Supp. 1980 § 1651-1661

COUNCIL ON JUDICIAL COMPLAINTS — 1980 MEMBERS

LeROY BLACKSTOCK, CHAIRMAN
(Five-year term)
Appointed By
President of the Oklahoma Bar Association

MARVIN C. EMERSON, ADMINISTRATIVE DIRECTOR
OF THE COURTS
Statutory Ex-Officio Secretary

EUGENE CARR
(Five-year term)
Appointed By:
Speaker of the Oklahoma House of Representatives

LARRY HAMMER
Appointed By:
President Pro Tempore of the Senate

COUNCIL ON JUDICIAL COMPLAINTS

Year	Complaints Submitted	Complaints Disposed of	Dismissed	Recommended Prosecution	Pending 12/31
1976	38	42	23	19*	14
1977	27	33	32	3**	8
1978	16	20	20	2**	3
1979	24	24	24	0	4
1980	32	25	24	1	1

In 1975 more than one complaint was submitted against each of eight Judges.

In 1976 more than one complaint was submitted against each of five Judges.

In 1977 more than one complaint was submitted against each of four Judges.

In 1978 more than one complaint was submitted against one Judge.

In 1979 more than one complaint was submitted against one Judge.

In 1980 more than one complaint was submitted against one Judge.

* These complaints involved three Judges.

** These complaints involved two Judges.

JUDICIAL NOMINATING COMMISSION

1980

Chosen By:

GENEVA SARRATT	GOVERNOR
JOE COLE	GOVERNOR
SANDY BILLAM	GOVERNOR
DAVE M. WECHSLER	GOVERNOR
BOB LEE KIDD, JR. (Appointed to succeed Milton Lewis)	GOVERNOR
WAYNE E. SWEARINGEN	GOVERNOR
SARAH REDWINE	COMMISSION MEMBER
C. B. SAVAGE	OKLAHOMA BAR ASSOCIATION
AUSTIN R. DEATON, JR.	OKLAHOMA BAR ASSOCIATION
RANDOLPH S. MEACHAM	OKLAHOMA BAR ASSOCIATION
TERRY W. WEST	OKLAHOMA BAR ASSOCIATION
ANDREW C. WILCOXEN, JR., Chairman	OKLAHOMA BAR ASSOCIATION
HOWARD K. BERRY	OKLAHOMA BAR ASSOCIATION

THE DISTRICT COURTS

EXPLANATORY NARRATIVE

This section relates to the District Courts. This section includes: maps of the judicial districts and principal trial court locations, list of the members of the District Court with the changes for the year. Statewide statistics, an aggregate listing of cases pending, filed, terminated, and ending of the report year pending by County, and finally, statistics on a "per judge" basis.

DISTRICT COURT
JURISDICTION AND ADMINISTRATIVE ORGANIZATION

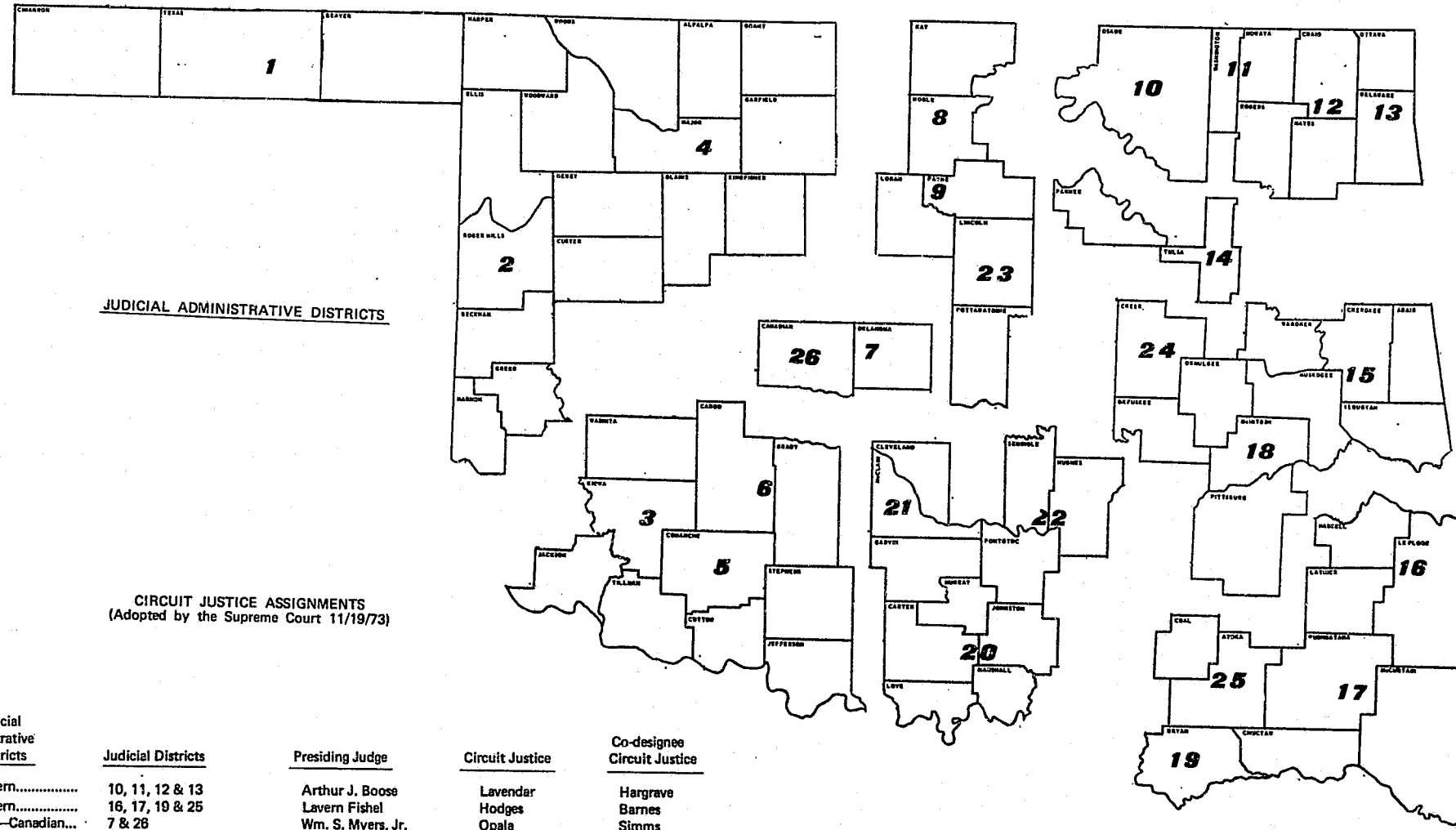
DISTRICT COURT*

The District Court has: Unlimited original jurisdiction over all justiciable matters; power to review administrative action; and power to issue writs, remedial or otherwise, which are necessary to effect any Order or Judgment.

A total of 196 Judges serves 26 Judicial Districts. The Judges are distributed as follows: 71 District Judges, 77 Associate District Judges, (one per county) and 48 Special Judges.

District and Associate District Judges are elected on a non-partisan ballot in a competitive election for a four-year term. Statutorily authorized Special Judges are appointed by and serve at the pleasure of the District Judge of the particular Judicial Administrative District.

*Article VII, Section 1, Okla. Const.



Judicial Administrative Districts	Judicial Districts	Presiding Judge	Circuit Justice	Co-designee Circuit Justice
Northeastern.....	10, 11, 12 & 13	Arthur J. Boose	Lavender	Hargrave
Southeastern.....	16, 17, 19 & 25	Lavern Fishel	Hodges	Barnes
Oklahoma-Canadian...	7 & 26	Wm. S. Myers, Jr.	Opala	Simms
Northwestern.....	1, 2 & 4	Wm. O. Green, III	Irwin	Doolin
South Central.....	20, 21 & 22	Joe D. Shumate	Williams	Hargrave/Hodges
Tulsa-Pawnee.....	14	Milford M. McDougal	Simms	Opala
East Central.....	15, 18 & 24	Robert A. Layden	Barnes	Hodges
North Central.....	8, 9 & 23	Lowell Doggett	Hargrave	Lavender
Southwestern	3, 5 & 6	Weldon Ferris	Doolin	Irwin/Williams

THE JUDICIAL DISTRICTS OF THE OKLAHOMA COURT SYSTEM

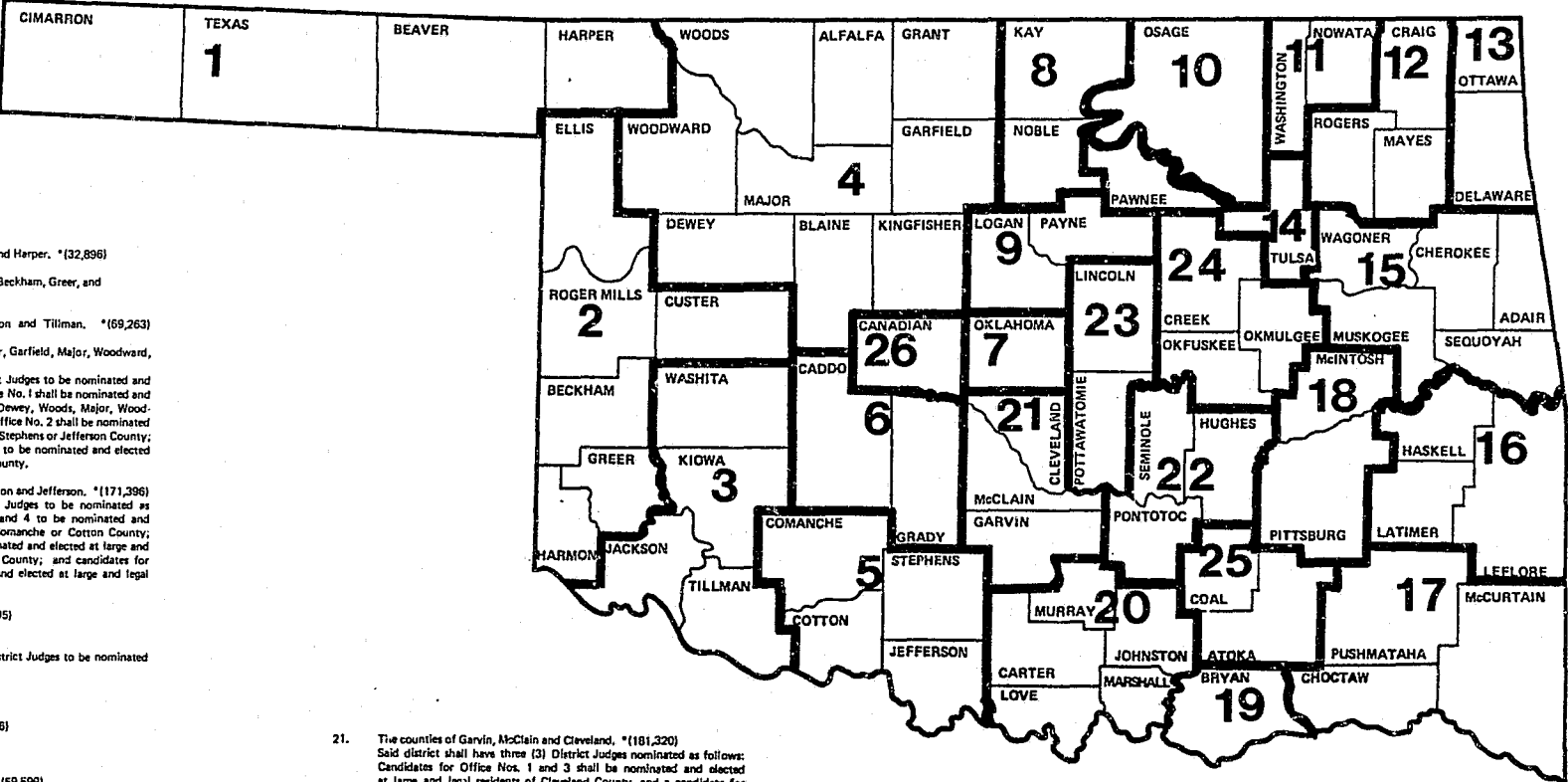
62

District

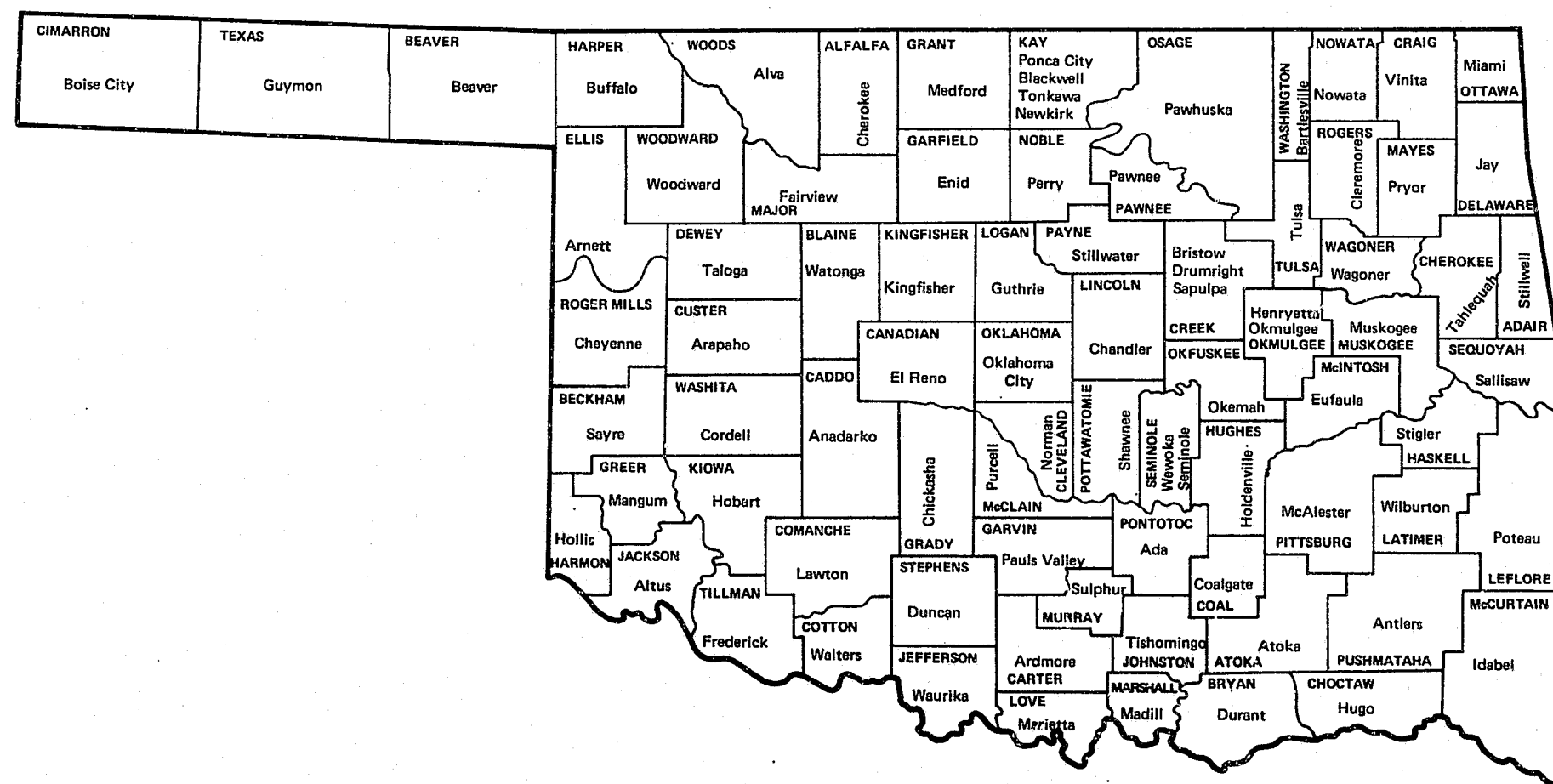
1. The counties of Cimarron, Texas, Beaver and Harper. *(32,896)
2. The counties of Ellis, Roger Mills, Custer, Beckham, Greer, and Harmon. *(67,029)
3. The counties of Washita, Kiowa, Jackson and Tillman. *(69,263)
4. The counties of Dewey, Blaine, Kingfisher, Garfield, Major, Woodward, Woods, Alfalfa and Grant. *(150,834)
Said districts shall have three (3) District Judges to be nominated and elected as follows: A candidate for Office No. 1 shall be nominated and elected at large and a legal resident of Dewey, Woods, Major, Woodward or Alfalfa County, a candidate for Office No. 2 shall be nominated and elected at large and a legal resident of Stephens or Jefferson County; and candidates for Office Nos. 3 and 5 to be nominated and elected at large and legal residents of Comanche County.
5. The counties of Comanche, Stephens, Cotton and Jefferson. *(171,396)
Said District shall have five (5) District Judges to be nominated as follows: Candidates for Office Nos. 1 and 4 to be nominated and elected at large and legal residents of Comanche or Cotton County; a candidate for Office No. 2 to be nominated and elected at large and a legal resident of Stephens or Jefferson County; and candidates for Office Nos. 3 and 5 to be nominated and elected at large and legal residents of Comanche County.
6. The counties of Grady and Caddo. *(70,395)
7. The county of Oklahoma. *(568,833)
Said district shall have fourteen (14) District Judges to be nominated and elected at large.
8. The counties of Noble and Kay. *(61,425)
9. The counties of Logan and Payne. *(89,316)
10. The county of Osage. *(39,327)
11. The counties of Washington and Nowata. *(59,599)
12. The counties of Rogers, Mayes and Craig. *(93,711)
Said district shall have two (2) District Judges to be nominated and elected at large.
13. The counties of Ottawa and Delaware. *(56,816)
14. The counties of Tulsa and Pawnee. *(485,903)
Said district shall have thirteen (13) District Judges to be nominated as follows: Candidates for Office Nos. 1 through 4 and 8 through 13 to be nominated from and legal residents of Tulsa County, and a candidate for office No. 5 to be nominated from and a legal resident of Pawnee County, all of whom shall be elected at large.
15. The counties of Wagoner, Cherokee, Adair, Muskogee and Sequoyah. *(188,743)
Said district shall have four (4) District Judges to be nominated and elected as follows: Candidates for Office Nos. 1 and 4 shall be nominated and elected at large and legal residents of Muskogee County; a candidate for Office No. 2 shall be nominated and elected at large and a legal resident of Wagoner or Cherokee County; and a candidate for Office No. 3 shall be nominated and elected at large and a legal resident of Adair or Sequoyah County.
16. The counties of Haskell, LeFlore and Latimer. *(61,548)
17. The counties of Pushmataha, McCurtain and Choctaw. *(65,127)
18. The counties of McIntosh and Pittsburg. *(56,019)
19. The county of Bryan. *(30,535)
20. The counties of Love, Carter, Murray, Johnston and Marshall. *(84,132)
Said district shall have two (2) District Judges to be nominated and elected as follows: One candidate to be nominated and elected at large and a legal resident of Carter County, and one candidate to be nominated and elected at large and a legal resident of Love, Murray, Johnston or Marshall County.

21. The counties of Garvin, McClain and Cleveland. *(181,320)
Said district shall have three (3) District Judges nominated as follows: Candidates for Office Nos. 1 and 3 shall be nominated and elected at large and legal residents of Cleveland County, and a candidate for Office No. 2 shall be nominated and elected at large and a legal resident of Garvin or McClain County.
22. The counties of Seminole, Hughes and Pontotoc. *(74,408)
Said district shall have three (3) District Judges to be nominated and elected as follows: One candidate to be nominated and elected at large and a legal resident of Pontotoc County; one candidate to be nominated and elected at large and a legal resident of Seminole or Hughes County, and one candidate to be nominated and elected at large and a legal resident of Seminole County.
23. The counties of Lincoln and Pottawatomie. *(81,840)
Said district shall have two (2) District Judges to be nominated and elected as follows: One candidate to be nominated and elected at large and a legal resident of Lincoln County, and one candidate to be nominated and elected at large and a legal resident of Pottawatomie County.
24. The counties of Okfuskee, Okmulgee and Creek. *(109,504)
Said district shall have five (5) District Judges to be nominated and elected as follows: One candidate to be nominated and elected at large and a legal resident of Okfuskee County; two (2) candidates to be nominated and elected at large and legal residents of Okmulgee County, and two (2) candidates to be nominated and elected at large and legal residents of Creek County, all of whom shall be elected at large.
25. The counties of Coal and Atoka. *(18,789)
26. The county of Canadian. *(56,452)

* Figures in parenthesis indicate 1990 official total population of Judicial Districts



3



JUDGES OF THE DISTRICT COURT
BY
JUDICIAL ADMINISTRATIVE DISTRICTS

January 1980

EAST CENTRAL

Bill Ed Rogers, Presiding Judge

District Judges

	District	Division
Wm H. Bliss	15	I
Edward Hardy Summers	15	II
Bill Ed Rogers	15	III
Robert A. Layden	18	
Edgar R. Boatman	24	I
Charles Woodson	24	I
Jess I. Miracle	24	II
John Maley	24	III
Kirk Woodliff	24	III

Associate District Judges

Paul E. Simmons	Wagoner	15	I
Lynn Burris	Cherokee	15	I
Lyle Burris	Muskogee	15	II
Fred D. Jack Green	Sequoyah	15	III
L. T. Spray	Adair	15	III
John D. Boydston	McIntosh	18	
Lonnie Wesley Brown	Pittsburg	18	
Streeter Speakman	Creek	24	k
O. C. Craig	Okfuskee	24	II
Anne Moroney	Okmulgee	24	III

Special Judges

J. R. Settle	Muskogee	15	II
Clyde Edward Davis	Pittsburg	18	
Clyde T. Patrick	Creek	24	I
Charles Humphrey	Okmulgee	24	III

NORTH CENTRAL

Lowell Doggett, Presiding Judge

District Judges

Lowell Doggett	8
Ray Lee Wall	9
Donald E. Powers	23
Lloyd H. Henry	23

Associate District Judges

Roger Mullins	Kay	8
Paul W. Cress	Noble	8
Bob Ward	Logan	9
Charles Headrick	Payne	9
Glenn Dale Carter	Pottawatomie	23
Robert L. Foster	Lincoln	23

Special Judges

Leslie D. Page	Kay	8
Cheryl A. Ramsey	Payne	9
Jesse R. Field	Pottawatomie	23

NORTHEASTERN

William J. Whistler, Presiding Judge

District Judges

	District	Division
Don H. Hampton	10	
Arthur J. Boose	11	
William J. Whistler	12	
Bryan E. Williams	12	
Sam C. Fullerton	13	

Associate District Judges

	County	
Marmon H. Potter	Osage	10
Glenn H. Chappell	Nowata	11
James H. Laughlin	Washington	11
Jess B. Clanton, Jr.	Craig	12
W. M. Thomas	Mayes	12
Edwin Doyle Carden	Rogers	12
Frieden L. Machesney	Delaware	13
Jon David Douthitt	Ottawa	13

Special Judges

	County	
Riley B. Quarles	Osage	10
Chloe Passley	Washington	11
Martha Sue Thompson	Ottawa	13
David Allen Box	Rogers	12

NORTHWESTERN

Frank M. Ogden, III, Presiding Judge

District Judges

Frank, Ogden, III	1	
Charles M. Wilson	2	
W. O. Green, III	4	I
J. Russell Swanson	4	I & II
Joseph A. Young, Jr.	4	III

Associate District Judges

	County	
James F. Lane	Beaver	1
Charles R. Board	Cimarron	1
Richard W. Pickens	Harper	1
Don Dale	Texas	1
Gary P. McGinn	Beckham	2
Eph Monroe	Custer	2
Charley W. Barton	Ellis	2
W. B. Garrett	Greer	2
William M. Fancher	Harmon	2
Giles C. Peterson	Roger Mills	2
Park W. Lamerton	Garfield	4
Larry D. Smith	Blaine	4
John W. Michael	Grant	4
Robert C. Lovell	Kingfisher	4
Wayne B. Smith	Alfalfa	4
Robert W. Collier	Dewey	4
James A. Wilkinson	Major	4
Ray Don Jackson	Woodward	4
Ray Dean Linder	Woods	4

Special Judges

	County	
David M. Collins	Garfield	4

OKLAHOMA-CANADIAN

Jack R. Parr, Presiding Judge

<u>District Judges</u>			
	County	District	Division
Carmon C. Harris	Oklahoma	7	
David M. Cook	"	7	
Jack R. Parr	"	7	
Charles L. Owens	"	7	
Harold C. Theus	"	7	
Wm. S. Myers	"	7	
Homer Smith	"	7	
A. L. Rakestraw	"	7	
Stewart M. Hunter	"	7	
William C. Kessler	"	7	
Raymond Naifeh	"	7	
William Robert Saied	"	7	
John Amick	"	7	
Joe Cannon	"	7	
Floyd L. Martin	Canadian	7	

Associate District Judges

	County	District	Division
Charlie Y. Wier	Oklahoma	7	
James D. Bednar	Canadian	7	

Special Judges

	County	District	Division
Leonard Geb	Oklahoma	7	
Robert D. Epperson	"	7	
Arthur Robert Swank, Jr.	"	7	
William M. Allen	"	7	
Creston Williamson	"	7	
Don Howard	"	7	
James L. Gullett	"	7	
Jim Pearson	"	7	
Paul W. Dudley	"	7	
Jon Lee Hester	"	7	
Joe Samuel Wallace	"	7	
Sandra Johnson	"	7	
Henry Albert Taylor	Canadian	7	

SOUTHEASTERN

Lavern Fishel, Presiding Judge

<u>District Judges</u>			
Pat Pate		16	
G. Gail Craytor		17	
Joe C. Taylor		19	
Lavern Fishel		25	

Associate District Judges

	County	District	Division
John N. Henderson	Haskell	16	
Robert Edward Price	Le Flore	16	
Bill Welch	Latimer	16	
Lowell R. Burgess, Jr.	Pushmataha	17	
James R. Wolfe	Choctaw	17	
John Anthony Benson	McCurtain	17	
John Allen Phillips, II	Bryan	19	
Harrell F. Fallowell	Coal	25	
Merline Bonner	Atoka	25	

Special Judges

	County	District	Division
Simon B. Spradlin	Le Flore	16	
Reed Blankenship	McCurtain	17	
Rocky L. Powers	Bryan	19	

SOUTHWESTERN

Weldon Ferris, Presiding Judge

	District Judge	District	Division
Weldon Ferris		3	
Milbern Jay Adams		5	
Jack Brock		5	I
James Winston Raburn		5	I
William M. Roberts		5	I
George Lindley		5	II

Associate District Judges

	County	District	Division
John Charles Edwards	Washita	3	
Vacant	Kiowa	3	
Loys Criswell	Jackson	3	
Harrison Roe	Tillman	3	
Tom Zynda	Caddo	5	
Oteka Alford	Grady	6	
Kenneth Youngblood	Comanche	6	
David Aubrey	Cotton	5	I
P.C. Largent, Jr.	Jefferson	5	II
Ellen C. Steely	Stephens	5	II

Special Judges

	County	District	Division
Temple Bailey	Jackson	3	
Norman Hill	Caddo	6	
Jim Brent Smalling	Grady	6	
Joseph P. Marak	Comanche	5	I
Peter C. Moore	Comanche	5	I
Michael M. Reynolds	Stephens	5	II

SOUTH CENTRAL

Joe D. Shumate, Presiding Judge

	District Judge	District	Division
Woodrow George		20	I
G. Dixie Gilbert		20	II
Preston Trimble		21	I
Alma Wilson		21	I
Joe D. Shumate		21	II
Ronald Jones		22	I
Gordon R. Melson		22	II & III
Bob Howard		22	II

Associate District Judges

	County	District	Division
Thomas S. Walker	Carter	20	I
H. Leo Austin	Johnston	20	II
Owen Townsend	Marshall	20	II
William R. Fulton	Murray	20	II
Kenneth L. Delashaw, Jr.	Love	20	II
Alan J. Couch	Cleveland	21	I
Haskell Paul	Garvin	21	II
James Kenneth Love	McClain	21	II
Mike Addicott	Pontotoc	22	I
Bill Biggers	Seminole	22	II
Bob Rives	Hughes	22	III

Special Judges

	County	District	Division
D. Michael Hisey	Carter	20	I
Gary M. Purcell	Cleveland	21	I
Sam J. Goodwin	Garvin	21	II
Jesse Green	Pontotoc	22	I
Earl A. Davis	Seminole	22	II
Edward Michael McDaniel	Cleveland	21	I

TULSA-PAWNEE

William W. Means, Presiding Judge

District Judges			
	County	District	Division
Raymond Graham	Tulsa	14	
Richard Comfort	"	14	
William W. Means	"	14	
Joe Jennings	"	14	
Margaret Lamm McCalister	"	14	
Richard V. Armstrong	"	14	
Jay Dean Dalton	"	14	
Patricia M. Hoebel	"	14	
Robert F. Martin, Jr.	"	14	
Milford M. McDougal	"	14	
Clifford E. Hopper	"	14	
David Winslow	"	14	
Robert E. Caldwell	"	14	

Associate District Judges		
	County	
Billy Rex Beasley	Tulsa	14
Charles D. Arney	Pawnee	14

Special Judges		
	County	
Bert C. McElroy	Tulsa	14
Richard Eldridge	"	14
Jane P. Wiseman	"	14
Vacant	"	14
Tony M. Graham	"	14
Edward E. Stephens	"	14
Jerry E. Perigo	"	14
Robert D. Frank	"	14

PERSONNEL CHANGES OF THE JUDICIARY

January - December
1980

COURT OF APPEALS				
Judge	Reason	Date	Replaced By	Date
Robert Neptune	Retired	9/1/80	John D. Boydston	12/3/80
Richard Romang	Deceased	10/15/80	Vacant	
DISTRICT COURT EAST CENTRAL				
District Judge	New Position	12/1/80	E. C. Nelson	12/5/80
Associate District Judge				
John D. Boydston	Appointed Court of Appeals	12/3/80	Vacant	
NORTH CENTRAL				
Associate District Judge				
Paul Cress	Retired	1/7/80	Kenneth R. Reed	2/29/80
NORTHWESTERN				
Presiding Judge				
Frank Ogden	Not Elected	3/8/80	Wm. . O. Green, III	3/8/80
Associate District Judge				
Eph Monroe	Retired	7/31/80	Alan D. Markham	8/1/80
OKLAHOMA-CANADIAN				
District Judge				
Floyd Martin	Deceased	9/4/80	James D. Bednar	11/26/80
Associate District Judge				
James D. Bednar	Appointed D.J.	11/26/80	Vacant	
Special Judge				
Sandra M. Johnson	Terminated New Position	11/30/80 3/1/80	Vacant Karl Gray	3/1/80
SOUTHWESTERN				
District Judge				
	New Position	9/1/80	Kenneth Youngblood	9/17/80
Associate District Judge				
Kenneth D. Youngblood	Appointed D.J.	9/17/80	Vacant	
Vacant			Lloyd R. Reeder	2/25/80
Special Judge				
Norman Hill	Resigned	6/25/80	Erick E. Anderson	8/1/80

SOUTH CENTRAL				
Judge	Reason	Date	Replaced By	Date
District Judge				
G. Dixie Colbert	Deceased	5/27/80	H. Leo Austin	8/13/80
Associate District Judge				
H. Leo Austin	Appointed D.J.	8/13/80	Stanley Anderson	12/2/80
Special Judge				
Earl A. Davis	Resigned	8/5/80	Gary R. Brown	8/5/80
TULSA-PAWNEE				
District Judge				
Raymond W. Gordon	Retired	12/1/80	Vacant	
Special Judge				
Vacant	New Position		Donald Lane Daniel Boudreau	2/8/80 8/27/80

STATEWIDE DISTRICT COURT STATISTICS

TWO-YEAR CASELOAD DISTRIBUTION ANALYSIS

The following chart illustrates totals for the cases filed, terminated and pending for the reporting years 1979 and 1980. A quick analysis will show that over half of the cases filed are misdemeanor. Likewise, approximately half of the cases terminated are the same. The misdemeanor category includes the rapidly processed traffic cases. The more time consuming caseload types; civil, domestic, and felony, comprise the greater majority of the end-of-year pending caseload. A comparison from 1979 to 1980 pending caseload reveals a 9.5% increase in court backlog.

CASELOAD DISTRIBUTION ANALYSIS

<u>CASES FILED IN 1979</u>			<u>CASES FILED IN 1980</u>		
Civil	48,525	10.8%	Civil	52,498	10.6%
Domestic	41,359	9.2	Domestic	43,848	8.8
Probate	17,181	3.8	Probate	17,205	3.5
Small Claims	78,323	17.5	Small Claims	85,298	17.2
Juvenile	7,323	1.8	Juvenile	8,156	1.6
Felony	22,753	5.1	Felony	23,696	4.8
Misdemeanor	<u>231,352</u>	<u>51.8</u>	Misdemeanor	<u>265,252</u>	<u>53.5</u>
Totals:	446,360	100.0%	Totals:	495,953	100.0%

<u>CASES TERMINATED IN 1979</u>			<u>CASES TERMINATED IN 1980</u>		
Civil	38,672	9.2%	Civil	43,737	9.3%
Domestic	38,393	9.2	Domestic	40,125	8.6
Probate	15,296	3.6	Probate	14,815	3.2
Small Claims	74,416	17.8	Small Claims	86,415	18.4
Juvenile	7,316	1.7	Juvenile	9,488	2.0
Felony	20,510	4.9	Felony	21,839	4.6
Misdemeanor	<u>224,732</u>	<u>53.6</u>	Misdemeanor	<u>253,377</u>	<u>53.9</u>
Totals:	419,138	100.0%	Totals:	469,796	100.0%

<u>CASES PENDING IN 1979</u>			<u>CASES PENDING IN 1980</u>		
Civil	49,718	18.2%	Civil	58,473	19.6
Domestic	26,817	9.8	Domestic	30,897	10.3
Probate	18,775	6.9	Probate	21,222	7.1
Small Claims	58,302	21.3	Small Claims	57,185	19.2
Juvenile	7,575	2.9	Juvenile	6,242	2.1
Felony	29,901	11.0	Felony	31,764	10.6
Misdemeanor	<u>81,776</u>	<u>29.9</u>	Misdemeanor	<u>92,963</u>	<u>31.1</u>
Totals:	272,727	100.0%	Totals:	298,746	100.0%

STATEWIDE COMPARISON OF THE FIVE YEAR CASELOAD ACTIVITY

The following chart indicates the change in activity by litigation category of the cases filed, terminated, and pending as of the end of each year.

In 1980, all categories realized an increase in the number of cases filed as compared to 1979 activity. The increases varied from 14.6 percent in misdemeanor to 0.1 percent in Small Claims. In the 1979 comparison of the caseload activity from 1980 to 1976, all categories realized an increase. The increases ranged from 33.7 percent in Small Claims to 4.3 percent in Probate.

Analyzing the cases terminated in the one year comparison indicates all but one litigation category had more cases terminated in 1980 than in 1979. Probate litigation realized a 3.1 percent decrease in cases terminated. The range in percentile of cases terminated for 1980 as compared to 1979 was an increase of 22.9 in Civil Litigation to a 6.5 increase in Felony. The five year comparison is somewhat better. All but one category realized an increase. Probate decreased 4.7 percent.

The real change occurred in cases pending. Both in the one year and five year comparison all but one category indicated an increase. In the one year comparison Civil Litigation pending increased 15.0 percent. The least increase was Felony with a 6.7 percent change. The five year comparison reveals a 13.8 percent increase in cases pending in Felony. Small Claims cases pending show a 2.1 percent decrease in the five year comparison.

FIVE YEAR COMPARISON OF CASES FILED

	1976	1977	1978	1979	1980	1980/1979	1980/1979
CIVIL	42,787	43,778	46,628	48,525	52,498	8.1	22.7
DOMESTIC*	45,768	47,688	47,785	48,682	52,004	6.8	63.6
PROBATE	16,494	16,532	16,950	17,181	17,205	.1	4.3
SMALL CLAIMS	63,795	73,314	77,798	78,071	85,298	9.2	33.7
FELONY	20,179	20,819	22,165	22,753	23,696	9.4	17.4
MISDEMEANOR	213,642	224,263	245,710	231,352	265,252	14.6	24.6
TOTAL:	402,665	426,394	457,036	446,360	495,853	11.1	23.1

FIVE YEAR COMPARISON OF CASES TERMINATED

	1979	1977	1978	1979	1980	1980/1979	1980/1979
CIVIL	34,894	34,784	54,740	38,672	43,737	22.9	25.3
DOMESTIC*	40,119	42,457	51,426	45,709	49,613	10.1	23.7
PROBATE	15,545	14,752	19,587	15,298	14,815	- 3.1	- 4.7
SMALL CLAIMS	62,384	59,465	95,425	74,416	86,415	16.1	38.5
FELONY	19,365	18,174	20,407	20,510	21,497	6.5	12.8
MISDEMEANOR	216,752	214,814	237,295	224,295	253,377	12.7	14.5
TOTAL:	389,059	384,246	477,817	419,138	469,706	12.1	17.2

FIVE YEAR COMPARISON OF CASES PENDING

	1976	1977	1978	1979	1980	1980/1979	1980/1979
CIVIL	48,518	57,512	39,889	49,718	58,473	15.0	17.0
DOMESTIC*	29,764	34,995	31,401	34,392	37,139	8.0	24.8
PROBATE	17,642	19,422	16,783	18,775	21,222	13.0	20.3
SMALL CLAIMS	58,439	72,288	54,661	58,302	57,185	- 1.9	- 2.1
FELONY	18,275	20,920	27,658	29,901	31,764	6.2	73.8
MISDEMEANOR	57,333	66,982	75,900	81,776	92,963	13.7	62.1
TOTAL:	229,971	272,119	246,147	272,727	298,736	9.5	29.9

STATEWIDE SUMMARY

The following chart was compiled from the 1980 Summary of District Court Activity Reports filed by the Court Clerk from each of the 77 counties. The charts illustrate the statewide District Court activity in each of the seven litigation categories. Within each category is a relative aging of the pending cases at the end of the reporting year. Elements relating to population (according to the 1980 Census); the number of District Judges, Associate District Judges, and Special Judges; total number of lawyers for the state; license applications; jury data, miscellaneous filings, and other elements of judicial activity are also found in the chart.

STATEWIDE SURVEY									
1980									
POPULATION 3,025,268	TOTAL CASES PENDING ON 1/1/80	TOTAL CASES FILED IN 1980	TOTAL CASES TERMINATED IN 1980	DISPOSED OF BY TRIAL OR AFTER CONTEST	DISPOSED OF WITHOUT TRIAL OR CONTEST	TOTAL CASES PENDING ON 12/31/80	BREAKDOWN BY YEAR FILED OF CASES PENDING ON DEC. 31, 1980		
NO. OF: DISTRICT JUDGES 77 ASSOCIATE JUDGES 50 SPECIAL JUDGES 9,595 LAWYERS 9,595							1980 CASES	1979 CASES	1978 OR PRIOR CASES
LITIGATION BREAKDOWN									
CIVIL									
AUTO NEGLIGENCE	4,722	4,238	3,518	699	2,799	5,452	2,977	2,001	474
OTHER TORT	4,153	3,762	3,054	815	2,198	4,861	2,580	1,381	890
LIEN OR MORTGAGE FORECLOSURE	2,397	3,589	2,581	695	1,844	3,405	2,295	760	350
REAL PROPERTY	3,407	4,409	4,180	1,303	2,766	3,622	2,030	852	742
CONTRACTUAL	25,500	25,617	21,641	2,827	18,827	29,476	17,272	9,861	2,343
APPEALS FROM ADMIN. TRIBUNALS (incl. driver license cases)	543	1,247	994	300	691	795	434	299	63
INJUNCTION, QUO WARRANTO, MANDAMUS, HABEAS CORPUS, ETC.	2,148	1,727	1,200	470	727	2,675	1,538	677	460
OTHER CIVIL	8,842	7,909	6,865	1,535	5,030	8,186	4,728	1,826	1,630
TOTAL CIVIL	49,712	52,498	43,737	8,644	34,862	58,473	33,864	17,657	6,952
DOMESTIC									
DIVORCE	18,903	35,198	32,250	5,827	26,387	21,851	11,090	6,169	4,592
SEPARATE MAINTENANCE	900	673	509	93	414	1,064	455	313	296
ANNULMENT	191	351	335	49	287	207	103	51	53
RECIPROCAL SUPPORT - INCOMING	3,697	2,677	2,573	370	2,194	3,801	1,817	1,201	783
RECIPROCAL SUPPORT - OUTGOING	1,341	1,097	841	141	752	1,597	745	479	373
PATERNITY PROCEEDINGS	291	276	169	26	142	348	120	80	148
ADOPTION	1,760	2,837	2,824	68	2,759	1,773	772	450	551
OTHER DOMESTIC	91	789	624	80	619	256	230	26	0
TOTAL DOMESTIC	27,174	43,848	40,125	6,654	33,554	30,897	15,332	8,769	6,796
PROBATE									
ADMINISTRATION OF ESTATES & PROBATE PROPER	13,483	9,435	7,638	208	7,369	15,280	6,447	3,395	5,438
DETERMINATION OF DEATH OF JOINT OR LIFE TENANT	720	2,090	2,552	7	2,545	858	426	203	229
MENTAL HEALTH	919	2,515	2,539	187	2,356	894	224	145	525
GUARDIANSHIP & CONSERVATORSHIP	3,540	1,829	1,428	48	1,357	3,493	1,094	920	1,929
APPROVAL OF CONVEYANCE OF INDIAN LANDS	68	531	507	76	431	90	58	14	18
OTHER PROBATE	105	205	153	2	153	157	71	35	51
TOTAL PROBATE	18,832	17,205	14,815	528	14,211	21,222	8,320	4,712	8,190
SMALL CLAIMS									
POSSESSION OF PERSONAL PROP. (Replevin)	1,292	2,002	2,122	489	1,624	1,174	720	286	168
POSSESSION OF REAL PROPERTY (Entry and Detainer)	4,472	10,369	9,076	1,192	7,880	5,765	4,435	1,192	137
OTHER SMALL CLAIMS	52,536	72,927	75,217	9,258	65,741	50,246	30,367	15,302	1,578
TOTAL SMALL CLAIMS	58,302	85,298	86,415	10,939	75,255	57,185	35,522	16,780	4,883
JUVENILE									
JUVENILE DELINQUENCY	3,982	4,752	5,296	2,517	2,646	3,447	2,344	605	498
CHILDREN IN NEED OF SUPERVISION	1,387	1,167	1,526	593	965	1,026	658	188	180
DEPENDENCY & NEGLECT	2,096	2,090	2,451	1,503	933	1,638	1,098	291	259
OTHER JUVENILE	109	237	215	103	106	131	74	32	259
TOTAL JUVENILE	7,574	8,156	9,488	4,716	4,647	6,242	4,174	1,106	981
COMBINED CIVIL CATEGORIES									
	161,594	207,005	194,680	31,474	162,529	174,019	97,156	49,024	27,783
FELONY									
CRIME AGAINST PERSON	4,558	5,414	4,666	772	3,993	5,302	2,537	1,114	1,651
CRIME AGAINST PROPERTY	13,753	10,617	8,970	821	8,456	15,412	5,836	3,238	6,338
OTHER FELONY (Do not include Post-Conviction Appeals)	11,590	7,861	8,203	511	7,864	11,050	3,750	2,314	4,988
TOTAL FELONY	29,901	23,896	21,839	2,094	20,313	31,764	12,123	6,666	12,975
MISDEMEANOR									
DUI	7,426	12,853	11,783	874	11,045	8,296	4,809	1,753	1,734
OTHER TRAFFIC	52,679	214,354	207,775	7,998	199,601	59,258	29,339	10,702	18,917
APPEALS FROM CITY-FUNDED CTS.	1,239	423	323	164	165	1,339	253	134	952
OTHER MISDEMEANORS	19,733	37,822	33,496	2,516	30,941	24,070	12,657	4,460	6,953
TOTAL MISDEMEANOR	81,077	265,252	253,377	11,542	241,762	92,663	47,360	17,049	28,556
COMBINED CRIMINAL CATEGORIES									
	110,978	289,848	275,126	13,638	262,065	124,718	49,471	23,715	41,531
GRAND TOTAL ALL CATEGORIES									
	272,572	495,853	469,706	45,110	424,594	298,736	158,687	72,739	69,314

		APPLICATIONS PENDING AT BEGINNING OF YEAR	APPLICATIONS FILED	ISSUED	DENIED	APPEALED	WITH-DRAWN	NUMBER OF PERSONS CERTIFIED FOR TRIAL AS ADULTS (FELONY)	
APPLICATIONS FOR LICENSES:		68	9,485	9,266	11	4	44	173	
BEER		2	560	543	5	0	7	MISCELLANEOUS FILINGS:	
BINGO		3	74	74	0	0	1	NOTARY PUBLIC BONDS	
POOL HALL		2	378	373	1	1	2	FICTITIOUS PARTNERSHIPS	
PROCESS SERVER		0	37	37	0	0	0	TAX WARRANTS	
OTHER								POWER OF ATTY. REVOCATION, ETC. (68 O.S. Supp. 1979 § 1056(b))	
								NUMBER OF MARRIAGE LICENSES ISSUED	
								67,198	
JURY DATA:		CIVIL	CRIMINAL	JOINT	TOTAL		TOTAL MISCELLANEOUS FILINGS		
		101	102	271	479		66,900		
NUMBER OF JURY TERMS HELD								NUMBER OF DISPOSITION DOCKETS HELD	
NUMBER OF DAYS JURY WAS IN ATTENDANCE		2,355					694		
NUMBER OF GRAND JURIES CALLED		11	FELONY PRELIMINARY HEARINGS						
				FELONY POST-CONVICTION APPEALS					
				BOND FORFEITURES					
						</			

DISTRICT COURT CASELOAD ACTIVITY
1980

COUNTY	CASES PENDING 1/1/79	CASES FILED	CASES TERMINATED	CASES PENDING 12/31/79
Adair	887	2,207	2,289	816
Alfalfa	453	1,448	1,486	415
Atoka	284	2,745	2,314	725
Beaver	457	1,589	1,450	596
Beckham	488	4,472	4,333	637
Blaine	1,153	3,567	3,431	1,289
Bryan	1,145	5,323	5,193	1,276
Caddo	3,215	7,845	8,570	2,490
Canadian	3,773	10,538	9,928	4,383
Carter	4,406	9,621	9,640	4,387
Cherokee	5,307	5,253	6,437	4,123
Choctaw	836	3,207	2,870	1,173
Cimarron	417	1,222	1,208	431
Cleveland	4,145	12,830	13,977	2,998
Coal	380	1,197	1,143	434
Comanche	8,833	17,022	16,810	9,045
Cotton	675	2,780	2,639	816
Craig	1,194	3,617	3,381	1,430
Creek	9,247	10,439	11,547	8,139
Custer	1,235	9,440	8,685	1,990
Delaware	2,789	2,992	3,779	2,002
Dewey	635	1,268	1,199	704
Ellis	317	1,289	1,189	417
Garfield	2,314	8,293	8,252	2,357
Garvin	3,106	5,329	6,039	2,386
Grady	9,250	12,294	12,114	9,430
Grant	212	1,125	1,114	223
Greer	433	1,318	1,202	549
Harmon	181	1,438	1,385	234
Harper	525	1,159	1,154	530
Haskell	640	1,236	1,241	635
Hughes	407	2,696	2,692	411
Jackson	1,608	3,959	3,709	1,858
Jefferson	1,376	2,025	1,940	1,461
Johnston	592	2,465	2,332	725
Kay	1,804	7,877	8,041	1,740
Kingfisher	708	4,435	4,259	884
Kiowa	741	3,232	3,095	878
Latimer	403	1,682	1,717	368
LeFlore	1,232	4,995	5,216	1,011
Lincoln	1,875	5,882	6,406	1,351
Logan	2,043	6,278	5,865	2,462
Love	1,364	3,154	2,834	1,684
Major	635	2,065	1,992	708
Marshall	1,049	1,899	2,052	696
Mayes	2,280	6,277	6,551	2,006
McClain	2,603	5,070	4,714	2,959
McCurtain	2,023	5,087	4,826	2,284
McIntosh	714	5,326	5,068	974
Murray	1,861	4,176	4,552	1,485
Muskogee	7,151	13,775	11,458	9,488
Noble	573	5,958	5,926	605
Nowata	688	1,472	1,404	756
Okfuskee	736	3,902	3,345	1,293
Oklahoma	71,348	67,855	59,193	80,008
Okmulgee	3,665	4,387	3,810	4,242
Osage	2,527	4,795	4,504	2,818
Ottawa	5,661	5,316	6,838	4,139
Pawnee	303	3,942	3,646	599
Payne	2,406	5,134	2,887	4,653
Pittsburg	3,328	8,149	7,670	3,807
Pontotoc	567	5,580	5,001	1,146
Pottawatomie	3,727	9,731	9,901	3,557
Pushmataha	617	2,050	1,781	886
Roger Mills	157	909	929	137
Rogers	5,362	8,923	10,595	3,690
Seminole	2,016	4,548	3,982	2,582
Sequoyah	2,469	8,665	8,431	2,703
Stephens	2,088	7,501	7,103	2,486
Texas	1,882	3,769	4,443	1,208
Tillman	536	1,686	1,775	447
Tulsa	52,742	64,180	49,774	67,148
Wagoner	1,299	6,550	6,628	1,221
Washington	2,939	5,201	4,972	3,168
Washita	1,042	3,711	3,871	882
Woods	820	1,961	2,042	739
Woodward	1,552	3,720	3,839	1,333
TOTAL:	272,572	495,853	469,706	298,736

AVERAGE CASELOAD PER JUDGE

The following tables rank average caseload per judge by Judicial Districts and county. Statistics include: cases pending on January 1, 1980; cases filed in 1980; total 1980 caseload; cases terminated in 1980; and cases pending on December 31, 1980.

Per Judge computations are based on the number of authorized Judgeships (196). For county figures, District Judgeships are apportioned among the counties regularly served.

AVERAGE OF CASES FILED TERMINATED AND PENDING
PER JUDGE BY JUDICIAL DISTRICT
1980

DISTRICT NUMBER	NUMBER OF JUDGES	TOTAL CASES			AVERAGE PER JUDGE		
		FILED	TERMINATED	PENDING	FILED	TERMINATED	PENDING
One	5	7,739	8,255	2,765	1,547.8	1,651.0	553.0
Two	7	18,866	17,723	3,964	2,695.1	2,531.8	566.2
Three	6	12,588	12,450	4,065	2,098.0	2,075.0	677.5
Four	13	27,882	27,714	8,652	2,144.7	2,131.8	655.5
Five	12	29,328	28,492	13,808	2,333.0	2,374.3	1,150.6
Six	5	20,139	20,684	11,920	4,027.8	4,136.8	2,384.0
Seven	28	67,855	59,193	80,008	2,423.3	2,114.0	2,857.4
Eight	4	13,835	13,967	2,345	3,458.7	3,491.7	586.2
Nine	4	11,412	8,752	7,115	2,853.0	2,188.0	1,778.7
Ten	3	4,795	4,504	2,818	1,598.3	1,501.3	939.3
Eleven	4	6,673	6,376	3,924	1,668.2	1,594.0	981.0
Twelve	6	18,817	20,527	7,126	3,136.1	3,421.1	1,187.6
Thirteen	4	8,308	10,617	6,141	2,077.0	2,654.2	1,535.2
Fourteen	24	68,122	53,420	67,747	2,838.4	2,225.8	2,822.7
Fifteen	10	36,450	35,243	18,331	3,645.0	3,524.3	1,833.1
Sixteen	5	7,913	8,174	2,014	1,582.6	1,634.8	402.8
Seventeen	5	10,344	9,477	4,343	2,068.8	1,895.4	868.6
Eighteen	4	13,475	12,736	4,781	3,368.7	3,184.0	1,195.2
Nineteen	3	5,323	5,193	1,276	1,774.3	1,731.0	425.3
Twenty	8	21,115	21,410	8,977	2,639.3	2,676.2	1,122.12
Twenty—One	9	23,229	24,730	8,353	2,581.0	2,747.7	928.1
Twenty—Two	8	12,824	11,675	4,139	1,603.0	1,459.3	517.3
Twenty—Three	5	15,613	16,307	4,908	3,122.6	3,261.4	981.6
Twenty—Four	10	18,728	18,702	13,674	1,872.8	1,870.2	1,367.4
Twenty—Five	3	3,942	3,457	1,159	1,314.0	1,152.3	386.3
Twenty—Six	3	10,583	9,928	4,383	3,512.6	3,309.3	1,461.0
STATE TOTAL	196	495,853	469,706	298,736	2,529.8	2,391.4	1,524.1

RANKING OF AVERAGE WORKLOAD PER JUDGE
BY JUDICIAL DISTRICT

RANK	JUDICIAL DISTRICT	TOTAL CASES PENDING 1/1/80	JUDICIAL DISTRICT	TOTAL CASES FILED 1980	JUDICIAL DISTRICT	TOTAL CASELOAD	JUDICIAL DISTRICT	TOTAL CASES TERMINATED 1980	JUDICIAL DISTRICT	TOTAL CASES PENDING 12/31/80
1	25	224.6	25	1,314.0	25	1,538.6	25	1,152.3	25	386.3
2	22	373.7	1	1,547.8	22	1,976.7	22	1,459.3	16	402.8
3	19	382.0	16	1,582.6	16	2,037.6	10	1,501.3	19	425.3
4	2	403.0	10	1,598.3	19	2,156.3	11	1,594.0	22	516.3
5	16	455.0	22	1,603.0	1	2,204.0	16	1,634.8	1	553.0
6	8	619.2	11	1,668.2	10	2,440.6	1	1,651.0	2	566.2
7	4	652.6	19	1,774.3	11	2,575.0	19	1,731.0	8	586.2
8	3	654.5	24	1,872.8	3	2,752.5	24	1,870.2	4	665.5
9	1	656.2	17	1,068.8	17	2,764.0	17	1,895.4	3	677.5
10	17	695.2	13	2,077.0	4	2,797.3	3	2,075.0	17	868.6
11	10	842.3	3	2,098.0	2	3,098.1	7	2,114.0	21	928.1
12	11	906.7	4	2,144.7	24	3,237.6	4	2,131.8	10	939.3
13	18	1,010.5	7	2,423.3	5	3,525.0	9	2,188.0	11	981.0
14	5	1,081.0	5	2,444.0	21	3,675.8	14	2,225.8	23	981.6
15	21	1,094.8	21	2,581.0	20	3,798.3	5	2,374.3	20	1,122.1
16	9	1,112.2	20	2,639.3	9	3,965.2	2	2,531.8	5	1,150.6
17	23	1,120.4	2	2,695.1	8	4,078.0	13	2,654.2	12	1,197.6
18	20	1,159.0	14	2,838.4	13	4,189.5	20	2,676.2	18	1,195.2
19	26	1,257.6	9	2,853.0	23	4,243.0	21	2,747.7	24	1,367.4
20	24	1,364.8	23	3,122.6	18	4,379.2	18	3,184.0	26	1,461.0
21	12	1,472.6	12	3,136.1	12	4,608.8	23	3,261.4	13	1,535.2
22	15	1,711.3	18	3,368.7	26	4,770.3	26	3,309.3	9	1,778.7
23	13	2,112.5	8	3,458.7	7	4,971.4	12	3,421.1	15	1,833.1
24	14	2,210.2	26	3,512.6	14	5,048.6	8	3,491.7	6	2,384.0
25	6	2,493.0	15	3,645.0	15	5,356.3	15	3,524.3	14	2,822.7
26	7	2,548.0	6	4,027.8	6	6,520.8	6	4,136.8	7	2,857.4
State Totals:		1,376.6		2,504.3		3,880.9		2,372.2		1,508.7

RANKING OF AVERAGE CASELOAD PER JUDGE
1980

COUNTY	AVERAGE CASES PENDING 1/1/80	COUNTY	AVERAGE CASES FILED	COUNTY	AVERAGE CASELOAD	COUNTY	AVERAGE CASES TERMINATED	COUNTY	AVERAGE CASES PENDING 12/31/80
Roger Mills	135.3	Roger Mills	783.6	Roger Mills	918.9	Coal	762.0	Roger Mills	118.1
Harmon	156.0	Coal	798.0	Coal	1,051.3	Roger Mills	800.6	Grant	185.8
Grant	176.6	Harper	927.2	Grant	1,114.1	Dewey	901.5	Harmon	201.7
Pontotoc	189.0	Haskell	929.3	Cimarron	1,311.2	Harper	923.2	Hughes	274.0
Atoka	196.0	Grant	937.5	Harper	1,347.2	Grant	928.3	Latimer	276.6
Pawnee	202.0	Dewey	953.3	Ellis	1,384.4	Haskell	933.0	Coal	289.3
Coal	253.3	Cimarron	977.6	Harmon	1,395.6	Nowata	936.0	Cimarron	344.8
Hughes	271.3	Nowata	981.3	Haskell	1,410.5	Okmulgee	952.5	Alfalfa	345.8
Ellis	273.2	Okmulgee	1,096.7	Dewey	1,430.8	Cimarron	966.4	Tillman	357.6
Latimer	303.0	Ellis	1,111.2	Nowata	1,440.0	Ellis	1,025.0	Ellis	359.4
Cimarron	333.6	Greer	1,136.2	Greer	1,509.4	Greer	1,036.2	Pontotoc	382.0
Beaver	365.6	Alfalfa	1,206.6	Latimer	1,567.6	Seminole	1,137.7	Pawnee	399.3
Okfuskee	368.0	Harmon	1,239.6	Alfalfa	1,584.1	Payne	1,154.8	Noble	403.3
Greer	373.2	Latimer	1,264.6	Beaver	1,636.8	Beaver	1,160.0	Harper	424.0
Alfalfa	377.5	Beaver	1,271.2	Tillman	1,777.6	Harmon	1,193.9	Bryan	425.3
Bryan	382.0	Marshall	1,277.4	Seminole	1,875.4	Alfalfa	1,238.3	LeFlore	433.9
Noble	382.0	Seminole	1,299.4	Pushmataha	2,005.2	Latimer	1,290.9	Greer	473.2
Harper	420.0	Tillman	1,348.8	Okmulgee	2,013.0	Jefferson	1,293.3	Beaver	476.8
Tillman	428.8	Jefferson	1,350.0	Atoka	2,026.0	Pushmataha	1,339.0	Haskell	477.4
Beckham	429.3	Adair	1,471.3	Pontotoc	2,049.0	Tillman	1,420.0	Atoka	483.3
Johnston	445.1	Pushmataha	1,541.3	Adair	2,062.6	Osage	1,501.3	Nowata	504.0
Cotton	450.0	Osage	1,598.3	Marshall	2,066.1	Adair	1,526.0	Marshall	523.3
Nowata	458.6	Woods	1,634.1	Hughes	2,068.6	Atoka	1,542.6	Dewey	529.3
Pushmataha	463.9	Major	1,710.8	Bryan	2,156.3	Marshall	1,542.8	Adair	544.0
McIntosh	476.0	Jackson	1,759.5	Major	2,250.0	Jackson	1,648.4	Cotton	544.0
Dewey	477.4	Bryan	1,774.3	Jefferson	2,267.3	Major	1,660.0	Johnston	545.1
Haskell	481.2	Garvin	1,776.3	Johnston	2,298.4	Pontotoc	1,667.0	Beckham	549.1
LeFlore	528.7	Hughes	1,797.3	Cotton	2,303.3	Okfuskee	1,672.5	Major	590.0
Major	529.1	Atoka	1,830.0	Woods	2,317.5	Woods	1,701.6	Woods	615.8
Kingfisher	532.3	Cotton	1,853.3	Okfuskee	2,317.5	Bryan	1,731.0	Okfuskee	646.5
Seminole	576.0	Johnston	1,853.3	Osage	2,440.6	Johnston	1,753.3	McIntosh	649.3
Adair	591.3	Pontotoc	1,860.0	Jackson	2,474.2	Cotton	1,759.3	Kingfisher	664.6
Kiowa	592.8	Okfuskee	1,951.0	LeFlore	2,672.5	Hughes	1,794.6	Pushmataha	666.1
Choctaw	628.5	Delaware	1,994.6	Garvin	2,811.6	Washington	1,988.8	Cleveland	666.2
Woods	683.3	Payne	2,053.6	Pawnee	2,830.0	Garvin	2,013.0	Kay	696.0
Stephens	696.0	Washington	2,080.4	Payne	3,016.0	McCurain	2,071.2	Kiowa	702.4
Jackson	714.6	Ottawa	2,126.4	Choctaw	3,039.8	Oklahoma	2,114.0	Washita	705.6
Kay	761.6	LeFlore	2,143.7	McCurain	3,051.5	Love	2,130.8	Seminole	737.7
Garfield	722.0	McCurain	2,183.2	Kiowa	3,178.4	Choctaw	2,157.8	Garfield	785.6
Marshall	788.7	Love	2,371.4	Stephens	3,186.3	Tulsa	2,212.1	Garvin	798.6
Craig	796.0	Choctaw	2,411.2	Craig	3,207.3	LeFlore	2,238.6	Wagoner	814.0
Washita	833.6	Craig	2,411.3	Washington	3,256.0	Craig	2,254.0	Jackson	825.7
Osage	842.3	Oklahoma	2,423.3	Love	3,396.9	Stephens	2,367.6	Stephens	828.6
Wagoner	866.0	Stephens	2,500.3	Garfield	3,536.3	Pawnee	2,430.6	Choctaw	881.9
Blaine	866.9	Kiowa	2,585.6	Blaine	3,548.8	Kiowa	2,476.0	Lincoln	900.6
McCurain	868.2	Creek	2,609.7	Cleveland	3,772.2	Delaware	2,519.3	Osage	939.3
Okmulgee	916.2	Pawnee	2,628.0	Washita	3,802.4	Blaine	2,570.6	Craig	953.3
Jefferson	917.3	Blaine	2,681.9	Delaware	3,854.0	Ottawa	2,735.2	Texas	966.4
Cleveland	921.1	Garfield	2,764.3	Kingfisher	3,866.9	Garfield	2,750.6	Blaine	969.1
Payne	962.4	Murray	2,784.0	Kay	3,912.4	Comanche	2,801.6	Jefferson	974.0
Love	1,025.5	Comanche	2,837.0	Murray	4,024.6	Muskogee	2,864.5	McCurain	980.2
Garvin	1,035.3	Cleveland	2,851.1	McIntosh	4,026.6	Creek	2,886.7	Murray	990.0
Custer	1,064.6	Tulsa	2,852.4	Beckham	4,284.4	Murray	3,034.6	Caddo	996.0
Washington	1,175.6	Washita	2,868.8	Comanche	4,309.1	Pittsburg	3,068.0	Okmulgee	1,060.5
Murray	1,240.6	Rogers	2,874.3	Noble	4,354.0	Washita	3,096.8	Woodward	1,110.8
Lincoln	1,250.0	Texas	3,015.2	Ottawa	4,390.8	Cleveland	3,106.0	Rogers	1,230.0
Canadian	1,257.6	Woodward	3,100.0	Woodward	4,393.3	McClain	3,142.6	Love	1,266.1
Caddo	1,286.0	Caddo	3,138.0	Caddo	4,424.0	Kingfisher	3,202.2	Washington	1,267.0
Woodward	1,293.3	Kay	3,150.0	Texas	4,520.8	Kay	3,216.4	Delaware	1,334.6
Pittsburg	1,331.2	Pittsburg	3,259.6	Pittsburg	4,590.8	Woodward	3,282.5	Mayes	1,337.3
Logan	1,362.0	Kingfisher	3,334.5	Rogers	4,761.6	Canadian	3,309.3	Pottawatomie	1,422.8
Comanche	1,472.1	McClain	3,380.0	Canadian	4,770.3	McIntosh	3,377.3	Canadian	1,461.0
Pottawatomie	1,490.8	Muskogee	3,443.7	Creek	4,921.5	Caddo	3,428.0	Comanche	1,507.5
Texas	1,505.6	Cherokee	3,502.0	Oklahoma	4,971.4	Rogers	3,531.6	Pittsburg	1,522.8
Mayes	1,520.0	Canadian	3,512.6	McClain	5,115.3	Texas	3,554.4	Logan	1,641.3
Sequoyah	1,646.0	McIntosh	3,550.6	Lincoln	5,171.3	Beckham	3,735.3	Ottawa	1,655.6
McClain	1,735.3	Carter	3,648.4	Tulsa	5,196.5	Carter	3,856.0	Custer	1,715.5
Carter	1,762.4	Beckham	3,855.1	Muskogee	5,231.5	Logan	3,910.0	Carter	1,754.8
Rogers	1,787.3	Pottawatomie	3,892.4	Wagoner	5,232.6	Noble	3,950.6	Sequoyah	1,802.0
Muskogee	1,787.7	Lincoln	3,921.3	Pottawatomie	5,383.2	Pottawatomie	3,960.4	Payne	1,861.2
Delaware	1,859.3	Noble	3,972.0	Logan	5,547.3	Lincoln	4,270.6	McClain	1,972.6
Ottawa	2,264.4	Mayes	4,184.6	Carter	5,610.8	Cherokee	4,291.3	Creek	2,034.7
Creek	2,311.7	Logan	4,185.3	Mayes	5,704.6	Mayes	4,367.3	Muskogee	2,367.0
Tulsa	2,344.0	Wagoner	4,366.6	Cherokee	7,040.0	Wagoner	4,418.6	Cherokee	2,748.6
Oklahoma	2,548.0	Grady	4,917.6	Sequoyah	7,422.6	Grady	4,845.6	Oklahoma	2,857.4
Cherokee	3,538.0	Sequoyah	5,776.6	Grady	8,617.6	Sequoyah	5,620.6	Tulsa	2,984.3
Grady	3,700.0	Custer	8,137.9	Custer	9,202.5	Custer	7,487.0	Grady	3,772.0

STATEWIDE SUMMARY OF JUDICIAL ACTIVITY

JUDICIAL ACTIVITY	STATEWIDE
PREDECREE OR POSTDECREE MOTION TO MODIFY	21,485
POSTJUDGMENT MOTION TO VACATE OR MODIFY A JUDGMENT	4,809
PROCEEDINGS IN AID OF EXECUTION, ETC.	16,598
POSTJUDGMENT PROCEEDINGS INVOLVING A TRUST MATTER	594
PRE OR POST JUDGMENT PROCEED. REQUIRING EVIDENTIARY HEAR.	9,060
MOTIONS TO SUPPRESS EVIDENCE OR TO QUASH INFORMATION	6,958
NUMBER OF SUMMARY JUDGMENTS MOTIONS CONSIDERED	6,198
NUMBER OF SUMMARY JUDGMENTS ENTERED	2,433
MOTIONS REQUIRING EVIDENTIARY HEARINGS IN JUVENILE CASES	12,440
PROCEEDINGS AFTER GRANTING LETTERS OF GUARDIANSHIP	4,885
PRE OR POST DECREE HEARINGS IN ADOPTION CASES	2,234
POSTDECREE HEARINGS ON SUPPORT MATTERS IN BASTARDY CASES	237
PROCEEDINGS IN PROBATE OR ADMINISTRATION OF ESTATE	4,794
NUMBER OF MOTION DEMURRER AND PRETRIAL DOCKETS HELD	6,827
DAYS SPENT ON MOTION DEMURRER AND PRETRIAL DOCKETS	4,047.4

JUDICIAL RETIREMENT SYSTEM

JUDICIAL RETIREMENT SYSTEM

The Judicial Retirement System, enacted in the 1968 Session of the Oklahoma Legislature applies to Judges of the Supreme Court, Court of Criminal Appeals, Court of Appeals, Workers' Compensation Court and the District Court. The 1978 Session of the Oklahoma Legislature included the Administrative Director of the Courts as an eligible participant. (20 O.S. Supp. 1979 § 1103).

The minimum retirement age is 60 after 20 years of service; 65 after 10; or 70 after 8. Credit is given for prior judicial service on any Court of record. (20 O.S. Supp. 1979 § 1102).

Each Justice or Judge who is a member of The Uniform Retirement System for Justices and Judges upon retirement shall be entitled to receive as retirement compensation, until changed by the Legislature an annual amount, each monthly payment of which shall be in an amount equal to three percent (3%) of the average monthly salary received by him as a Justice or Judge based on the last five (5) years of active service multiplied by the number of total years of service as a Justice or Judge of a Court of record. Provided, however, that no Justice or Judge may receive a monthly retirement benefit in excess of sixty percent (60%) of the average monthly salary based on the last five (5) years of active service and found applicable to such Justice or Judge at the time of retirement.

Each Justice or Judge who is a member of The Uniform Retirement System for Justices and Judges shall have five percent (5%) of his current monthly salary withheld by the State of Oklahoma and deposited in a fund in the State Treasury which is hereby created and shall be known as the Oklahoma Judicial Retirement Fund. If a Justice or Judge shall elect in writing to bring his surviving spouse within the provisions of this Act extending certain benefits to his surviving spouse, he shall have eight percent (8%) of his current monthly salary withheld by the State of Oklahoma and deposited in said fund.

The State portion of the Retirement System is funded by payment of ten percent (10%) of the gross collection of the Court Fund paid to the State Judicial Fund for transfer by the Office of the Court Administrator to the State Judicial Retirement Fund.

Judges may retire on grounds of physical or mental disability by decree of the Court on the Judiciary with their amount of retirement compensation set by that Court.

**BREAKDOWN OF SOURCES OF CONTRIBUTIONS TO
THE STATE JUDICIAL RETIREMENT SYSTEM**

Fiscal Year	Contributed By Judges	Appropriated from State Judicial Fund	Percentage Contributed By Judges
1973	\$ 101,941	\$ 260,000	28.2%
1974	109,469	350,000	23.8
1975	160,612	500,000	32.1
1976	166,739	500,000	33.3
1977	386,184	325,000	54.3
1978	400,955	325,000	55.2
1979	426,339	325,000	56.7
1980	441,573	1,457,425*	23.5

TOTAL BENEFITS PAID

FY-73	\$377,181.96
FY-74	\$400,196.66
FY-75	\$449,764.00
FY-76	\$517,991.58
FY-77	\$634,450.41
FY-78	\$581,514.31
FY-79	\$635,361.07
FY-80	\$737,811.57

*Ten Percent Payment From the Court Fund to the Judicial Retirement System.

JUDICIAL TRAINING PROGRAMS

SUMMARY OF JUDICIAL TRAINING PROGRAMS

Judicial District	Days Spent in Judicial Training Programs		Total Days Spent in Judicial Training Programs	Training Programs Attended		Total Programs Attended
	In-State	Out-of-State		In-State	Out-of-State	
1	25.3	0	25.3	11	0	11
2	14.0	0	14.0	6	0	6
3	31.5	0	31.5	25	0	25
4	63.0	31.0	94.0	29	11	40
5	32.0	17.0	49.0	17	2	19
6	12.5	45.0	57.5	6	2	8
7	121.0	70.0	191.0	64	7	71
8	25.0	0	25.0	6	0	6
9	3.0	0	3.0	1	0	1
10	2.0	0	2.0	1	0	1
11	3.5	15.0	18.5	5	0	5
12	23.5	0	23.5	10	0	10
13	21.5	10.0	31.5	8	1	9
14	60.5	31.0	91.5	40	5	45
15	19.2	0	19.2	15	0	15
16	11.0	12.0	23.0	3	1	4
17	12.0	0	12.0	6	0	6
18	2.0	0	2.0	1	0	1
19	11.0	0	11.0	5	0	5
20	8.0	0	8.0	5	0	5
21	19.0	34.5	53.5	17	10	27
22	15.0	42.0	57.0	7	2	9
23	58.0	20.0	78.0	26	3	29
24	51.0	21.0	72.0	39	4	43
25	10.0	0	10.0	6	0	6
26	10.5	0	10.5	2	0	2
Total:	665.0	348.5	1013.5	361	48	409

CONTINUED

1 OF 2

OKLAHOMA JUDGES WHO ATTENDED THE
NATIONAL JUDICIAL COLLEGE
IN 1980

REGULAR SESSION

Alford, Oteka L.
Collins, David M.
Craytor, G. Gail
Green, Jesse D.
Melson, Gordon R.
Pearson, Jim
Purcell, Gary Morgan
Rogers, Bill Ed
Smalling, Jim B.
Smith, Larry D.

Associate District Judge
Special Judge
District Judge
Special Judge
District Judge
Special Judge
Special Judge
District Judge
Special Judge
Associate District Judge

Grady County
Garfield County
17th Judicial District
Pontotoc County
22nd Judicial District
Oklahoma County
Cleveland County
15th Judicial District
Grady County
Blaine County

GRADUATE SESSION

NEW TRENDS AND EVIDENCE

Douthitt, Jon D.
Field, J.R.
Naifeh, Raymond

Associate District Judge
Special Judge
District Judge

Ottawa County
Pottawatomie County
7th Judicial District

OKLAHOMA JUDGES WHO ATTENDED THE
AMERICAN BAR ASSOCIATION APPELLATE JUDGES SEMINAR
IN 1980

APPELLATE JUDGES SEMINAR

Irwin Pat
Reynolds, Lester A.

Vice Chief Justice
Judge

Supreme Court
Court of Appeals

APPELLATE JUDGES SEMINAR SENIOR SERIES

Hargrave, Rudolph

Justice

Supreme Court

OKLAHOMA JUDGES WHO ATTENDED THE
AMERICAN ACADEMY OF JUDICIAL EDUCATION
IN 1980

TRIAL JUDGES ACADEMY:

Austin, H. Lee	District Judge	20th Judicial District
Board, C.R.	Associate District Judge	Cimarron County
Humphrey, Charles M.	Special Judge	Okmulgee County
Jackson, Ray Don	Associate District Judge	Woodward County
Lane, Donald C.	Special Judge	Tulsa County
Lindley, George	District Judge	5th Judicial District
Maley, John	District Judge	24th Judicial District
Perigo, Jerry E.	Special Judge	Tulsa County
Price, Robert	Associate District Judge	LeFlore County
Wier, Charlie Y.	Associate District Judge	Oklahoma County

COURT CLERKS
DISTRICT COURTS OF OKLAHOMA

COURT CLERKS
DISTRICT COURTS OF OKLAHOMA

Adair
Alfalfa
Atoka
Beaver
Beckham
Blaine
Bryan
Caddo
Canadian
Carter
Cherokee
Choctaw
Cimarron
Cleveland
Coal
Comanche
Cotton
Craig
Creek
Custer
Delaware
Dewey
Ellis
Garfield
Garvin
Grady
Grant
Greer
Harmon
Harper
Haskell
Hughes
Jackson
Jefferson
Johnston
Kay
Kingfisher
Kiowa
Latimer
LeFlore

Lincoln
Logan
Love
McClain
McCurtain
McIntosh
Major
Marshall
Mayes
Murray
Muskogee
Noble
Nowata
Okfuskee
Oklahoma
Okmulgee

Osage
Ottawa
Pawnee
Payne
Pittsburg
Pontotoc
Pottawatomie
Pushmataha
Roger Mills
Rogers
Seminole
Sequoyah
Stephens
Texas
Tillman
Tulsa
Wagoner
Washington

Washita
Woods
Woodward

Lou Nelle Rhodes
Janet Crouch
Linda Cops
Pearl Yates
Layton Broddrick
Loraine A. Mack
Louise Gentry
Harold Rodgers
Clyde Miller
Carole Brooks
Elizabeth A. Lamons
Opal Henderson
Laverne Wells
Norma Nichols
Margorie Hefley Droke
Janice E. Mitchell
Callie Mae Bobo
Julie Patrick
Dorothy Crawford
Irene Pruitt
Cecil Haggard
Pauline Porter
Ina Fay Brown
E' Louise DeVinney
E. L. Michael
Glenda Fenimore
Emma Jean Hamilton
Ruth Miller
Gayle Lewis
Twila Easterwood
Marvin G. Smith
Lois Merchant
Connie Connell
Edna Palmer
Patricia Hitchcock
Hazel M. Wood
Gladys Rivers
Beulah Anderson
Frank Prock
Bill Rockwell
Ruth Orr (Appointed May, 1980)
Opal Wilbanks
Lois Webb
Faye Suggs
Joyce Mosely
Sam Hess
Bobbie Solesbee
Vada Major
Donna Rogers
Eloise Gist
Jerry Brown
Nadine Harnage
Vicky Maine
Gwenna Jackson
Vera Parsons
Dan Gray
Lucille Freeman
Kathleen Nickell (Appointed March 1980)
Helen Christensen
Eddie Simpson
Isabelle Wilkinson
Rose Jarvis
Dorothy Glover
Wayne Joplin
Ruby Poe
Kathy Chapman
Donald E. Campbell
June Lunsford
Edra J. Harrison
Theodore Stites
Jean Deaton
Twila Fenton
Lois Kent
Don Austin
Charles Jeffers
Minton A. Mikel
Doris Curnutt (Appointed May, 1980)
Alvin Ernst
Jean Young
Elveta Hughes

FINANCIAL MANAGEMENT

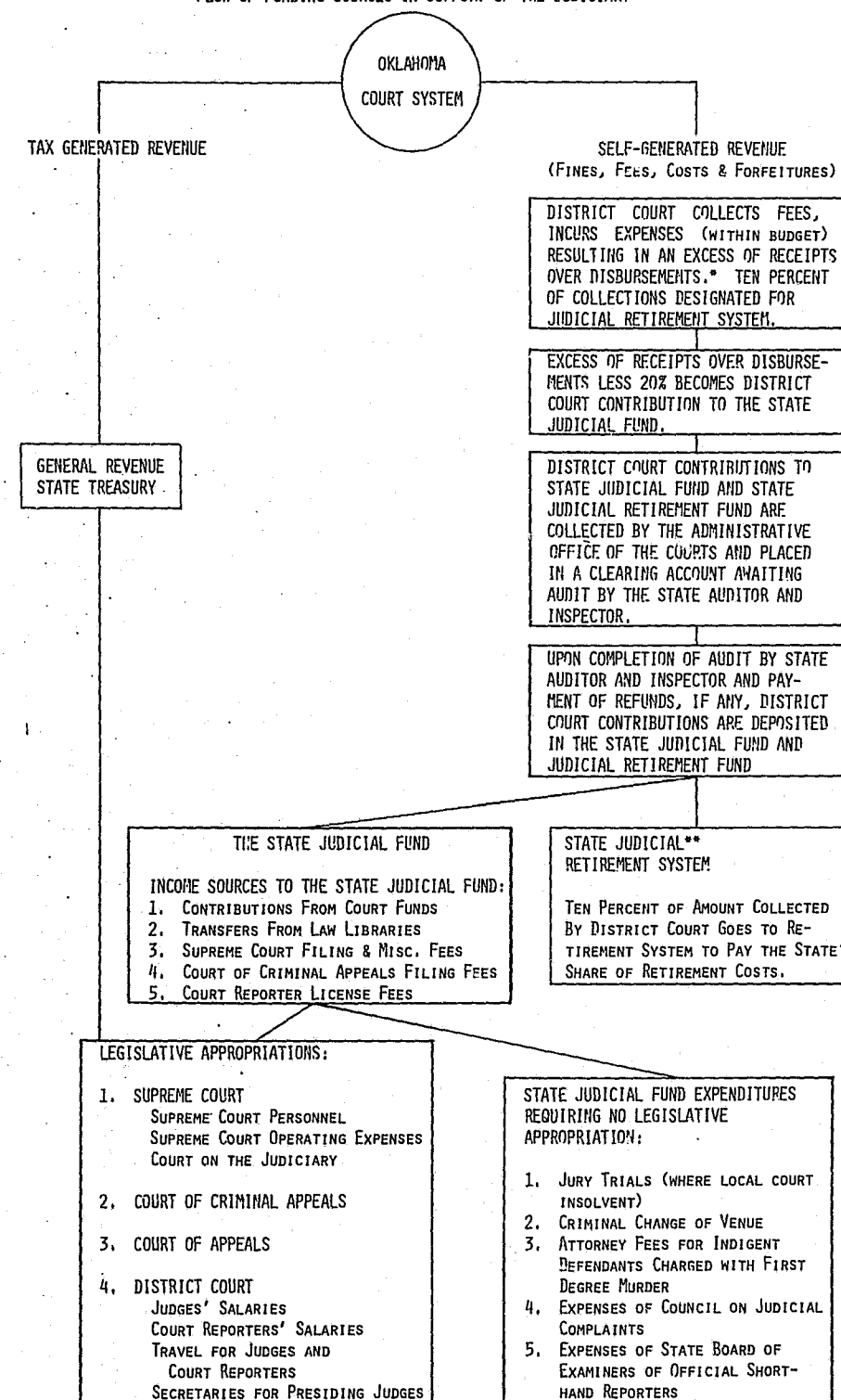
EXPLANATORY NARRATIVE

The following statistics depict financial management of the judiciary. Five major subsections include: 1) sources of funding, 2) State Judicial Fund, 3) court fund expenditures for indigent defense services, 4) operation of the District Courts, 5) operation of County Law Libraries.

OKLAHOMA JUDICIAL SYSTEM FUNDING SOURCES

The following chart displays the funding sources of the judiciary. Next is a five-year comparison of the percentile of revenue that is generated by the courts of the total support needed for the operation of the courts.

FLOW OF FUNDING SOURCES IN SUPPORT OF THE JUDICIARY



*RULES FOR MANAGEMENT OF THE COURT FUND, 20 O.S.

SUPP. 1979, CH. 18, APP.

*COURT FUND OF TULSA COUNTY, OKLAHOMA, ET AL V. COOK,

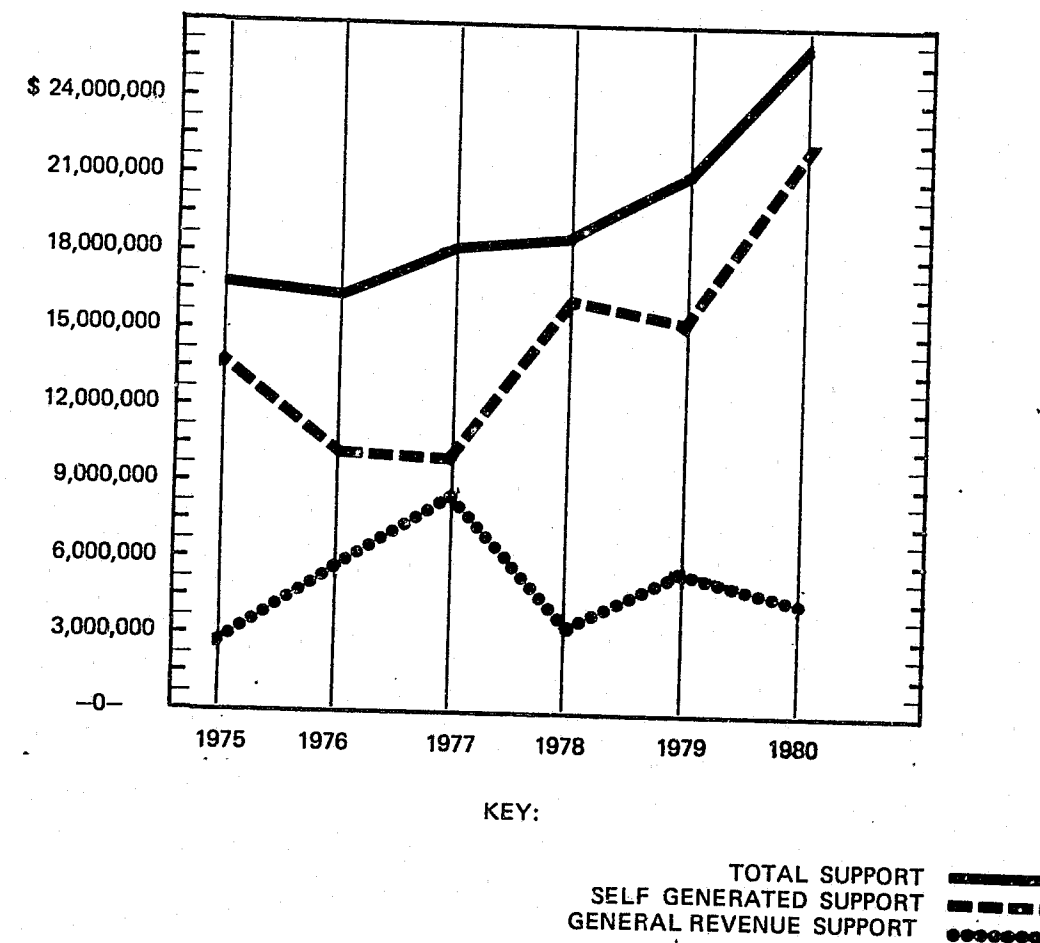
OKL., 557 P. 2, 875

**20 O.S. SUPP. 1979, § 1307

OKLAHOMA JUDICIARY SUPPORT SOURCES: A BREAKDOWN
(Based on local expenditures coupled with appropriated funds)
1975 - 1980

SELF-GENERATED SUPPORT			GENERAL REVENUE SUPPORT	TOTAL SUPPORT
COURT FUND EXPENDITURES	STATE JUDICIAL FUND APPROP.	TOTAL SELF- GENERATED		
7,994,778	5,966,885	13,961,663 (84.0%)	2,667,973 (16.0%)	16,629,636 (100%)
8,531,946	1,960,000	10,491,946 (64.8%)	5,709,341 (35.2%)	16,201,287 (100%)
8,990,124	1,300,000	10,290,124 (56.3%)	8,002,263 (43.7%)	18,292,387 (100%)
9,849,718	6,255,002	16,104,720 (83.1%)	3,280,362 (16.9%)	19,385,082 (100%)
10,842,207	4,845,098	15,687,305 (72.8%)	5,859,323 (27.2%)	21,546,628 (100%)
15,111,791	7,230,325	22,342,116 (84.6%)	4,059,826 (15.49%)	26,401,942 (100.0%)

*Court fund expenditures are for the calendar year and include payments to county general fund but exclude judicial fund contributions.



STATE JUDICIAL FUND TRANSFERS

The following charts depict State Judicial Fund transfers by court funds and law library funds. The Court funds are transferred to the State Judicial Fund on a quarterly basis by the Office of the Administrative Director of the Courts. The law library funds are transferred from the county law libraries to the State Judicial Fund at the end of a fiscal year.

COURT FUND CONTRIBUTIONS TO STATE JUDICIAL FUND

1976 - 1980

COUNTY	1976	1977	1978	1979	1980
Adair	\$ 13,659.80	\$ 7,676.07	\$ 14,129.53	\$ 30,953.40	\$ 17,858.73
Alfalfa	34,054.00	30,557.14	41,982.00	95,273.61	32,762.87
Atoka	29,998.16	29,949.19	34,304.87	48,452.09	29,076.58
Beaver	33,517.11	30,488.83	34,208.99	42,051.60	17,921.48
Beckham	95,124.51	59,663.75	84,788.45	158,026.22	70,980.26
Blaine	56,692.27	46,149.47	45,291.89	48,246.70	41,693.80
Bryan	16,477.29	7,484.33	5,803.32	62,318.51	42,526.76
Caddo	100,557.39	95,247.32	79,148.26	139,979.90	110,310.75
Canadian	118,224.06	94,733.50	104,656.66	221,602.30	238,092.94
Carter	10,188.55	12,932.11	39,068.53	124,448.80	119,782.65
Cherokee	21,177.94	17,514.14	14,767.36	14,001.04	9,447.24
Choctaw	35,450.83	26,514.65	8,225.15	21,441.63	43,853.34
Cimarron	18,410.46	15,046.80	14,609.23	31,704.64	18,665.52
Cleveland	46,510.43	95,471.63	103,301.94	301,981.83	--0--
Coal	8,886.96	4,076.33	16,805.84	11,960.58	9,689.95
Comanche	207,969.11	182,513.75	162,956.74	128,693.69	87,195.30
Cotton	24,285.36	29,776.36	32,547.99	33,883.04	49,354.44
Craig	10,224.19	10,224.19	48,888.03	41,888.68	5,015.46
Creek	84,305.66	90,104.36	77,207.56	166,922.76	139,650.40
Custer	216,317.90	207,398.64	246,674.21	272,133.29	193,915.43
Delaware	27,660.20	28,182.49	26,217.52	35,093.76	193,915.43
Dewey	17,247.40	22,972.56	11,525.26	21,003.88	29,163.81
Ellis	25,324.87	14,155.18	27,602.55	25,466.67	35,087.19
Garfield	120,573.18	62,864.52	102,275.56	173,678.64	141,552.03
Garvin	119,557.09	118,024.14	134,196.40	151,831.32	122,059.20
Grady	143,376.87	115,559.33	157,284.90	284,001.12	249,003.75
Grant	15,064.80	10,481.84	23,653.07	17,683.63	17,683.63
Greer	14,780.34	7,559.54	11,137.72	10,514.63	12,004.42
Harmon	6,268.82	7,719.72	4,511.37	15,212.10	17,006.81
Harper	24,266.58	16,469.47	17,962.97	15,437.33	10,467.66
Haskell	10,332.28	4,581.30	9,464.77	19,413.71	12,718.65
Hughes	25,777.00	24,040.24	28,396.67	36,542.10	38,040.96
Jackson	47,957.24	45,766.05	56,822.35	38,797.53	14,396.06
Jefferson	47,610.83	24,894.33	58,026.77	57,157.78	26,546.08
Johnston	21,641.11	17,601.75	23,612.62	42,953.02	23,681.41
Kay	15,732.98	4,903.35	13,465.49	70,714.24	41,854.91
Kingfisher	26,463.54	24,576.06	39,601.73	57,945.79	78,629.44
Kiowa	39,845.04	38,801.65	26,786.47	46,993.07	59,093.97
Latimer	14,904.77	12,035.34	6,110.46	1,272.53	13,279.63
LeFlore	3,931.79	2,931.01	89.55	1,982.30	--0--
Lincoln	87,441.79	88,206.41	87,512.59	135,049.48	128,850.66
Logan	70,227.33	25,113.76	42,635.59	72,753.48	33,898.02
Love	72,118.19	42,837.17	19,196.35	74,722.88	38,557.77
McClain	81,876.53	86,108.12	65,738.01	83,910.88	94,091.20
McCurain	91,194.81	48,541.93	74,914.27	95,115.68	67,231.24
McIntosh	64,624.10	56,919.21	81,931.83	60,983.14	71,478.99
Major	62,005.30	56,719.27	56,810.97	67,876.59	41,840.40
Marshall	14,469.81	17,099.01	19,878.20	28,620.97	18,199.39
Mayes	44,733.10	23,008.08	17,579.73	62,063.60	59,285.07
Murray	58,094.12	42,150.89	74,793.87	86,579.55	63,744.11
Muskogee	100,476.24	83,913.93	129,249.28	134,790.83	59,259.42
Noble	109,521.80	101,683.06	74,428.72	154,096.05	90,312.29
Nowata	13,829.37	7,148.40	11,779.23	29,548.99	25,621.88
Okfuskee	42,186.05	40,982.16	53,001.25	47,086.50	94,111.77
Oklahoma	433,404.06	235,724.91	41,250.88	614,506.58	493,359.21
Oklmulgee	10,908.07	13,440.41	48,516.32	55,580.40	44,866.73
Osage	2,492.49	3,300.45	1,723.92	40,129.78	37,649.48
Ottawa	62,622.82	49,994.09	65,335.56	111,480.38	49,887.83
Pawnee	92,586.40	88,497.52	72,288.39	132,108.06	--0--
Payne	69,069.14	67,293.11	69,828.49	139,742.48	136,759.81
Pittsburg	45,460.97	62,054.40	86,883.74	128,702.40	59,100.10
Pontotoc	38,656.45	22,636.80	30,738.78	130,699.33	73,329.48
Pottawatomie	87,103.10	112,735.33	155,585.04	245,100.93	161,415.09
Pushmataha	20,894.19	21,101.44	18,960.82	23,074.51	2,980.07
Roger Mills	15,947.40	12,995.12	17,802.10	20,571.58	38,972.52
Rogers	65,063.33	61,086.15	73,704.57	111,170.38	45,943.61
Seminole	12,129.89	12,299.89	22,584.88	52,877.31	42,000.14
Sequoyah	79,443.19	104,737.15	129,528.29	165,128.12	113,120.25
Stephens	--0--	--0--	--0--	--0--	92,438.18
Texas	57,059.01	58,758.22	43,791.26	71,011.18	20,929.89
Tillman	29,648.78	38,351.30	31,765.75	46,677.14	18,761.29
Tulsa	344,751.49	274,082.78	79,989.45	488,334.39	330,830.84
Wagoner	121,799.11	117,836.84	161,261.84	201,612.39	125,528.27
Washington	17,642.00	22,725.68	28,322.51	48,685.83	39,893.39
Washita	64,882.95	53,515.39	65,502.46	125,178.41	70,690.41
Woods	37,589.81	33,865.87	14,158.66	43,443.62	34,692.53
Woodward	88,100.47	76,041.48	97,217.41	72,430.18	95,218.66
Total:	\$4,660,381.21	\$3,861,259.56	\$4,174,189.28	\$7,242,412.56	\$5,244,088.46

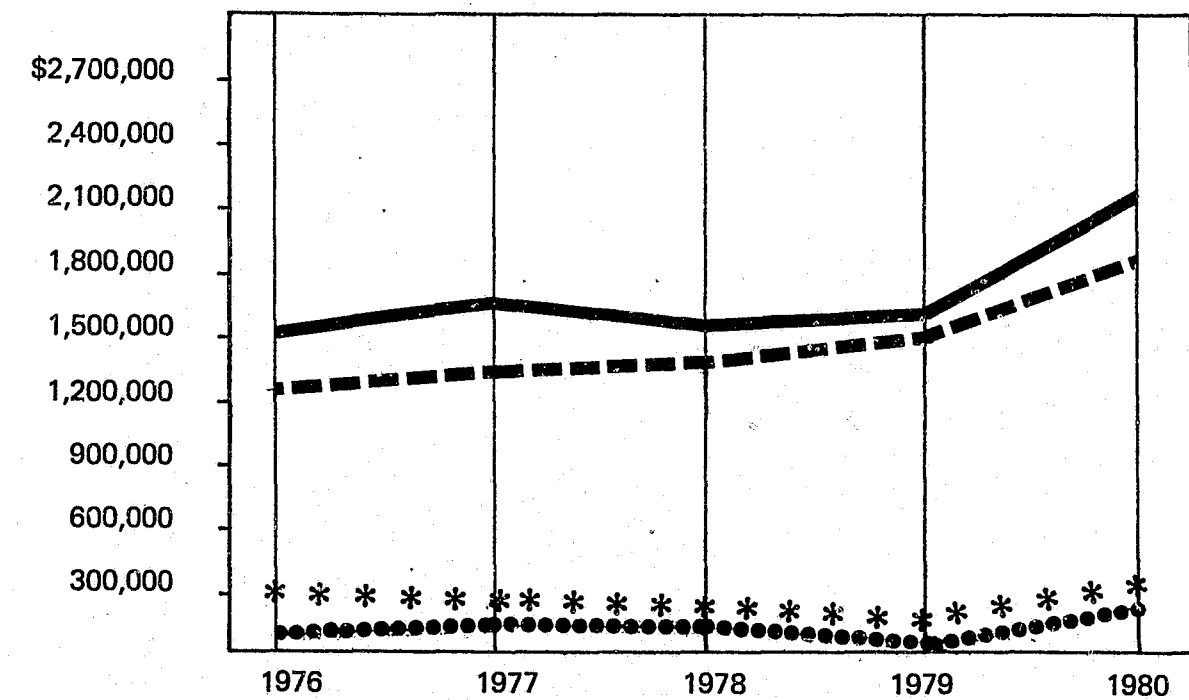
CONTRIBUTIONS TO STATE JUDICIAL FUND					
FROM THE LAW LIBRARIES					
COUNTY	1976	1976 - 1980 1977	1978	1979	1980
Adair	\$ 734.86	\$ 259.71	\$ -0-	\$ -0-	\$ *
Alfalfa	220.38	26.93	-0-	-0-	-0-
Atoka	-0-	-0-	-0-	-0-	-0-
Beaver	-0-	1,293.91	316.48	-0-	*
Beckham	-0-	1,776.95	-0-	-0-	-0-
Blaine	4,797.06	-0-	-0-	-0-	-0-
Bryan	-0-	2,249.12	-0-	-0-	-0-
Caddo	-0-	-0-	-0-	-0-	-0-
Canadian	-0-	-0-	-0-	-0-	-0-
Carter	942.94	-0-	425.01	-0-	-0-
Cherokee	-0-	646.90	-0-	-0-	54.53
Choctaw	-0-	435.92	-0-	-0-	-0-
Cimarron	4,252.39	-0-	-0-	-0-	-0-
Cleveland	1,235.01	274.30	-0-	-0-	-0-
Coal	-0-	-0-	-0-	-0-	-0-
Comanche	-0-	-0-	-0-	-0-	-0-
Cotton	809.49	-0-	-0-	-0-	-0-
Craig	38.65	-0-	-0-	-0-	-0-
Creek	3,184.29	-0-	-0-	-0-	*
Custer	689.09	749.51	-0-	-0-	-0-
Delaware	-0-	-0-	894.49	-0-	-0-
Dewey	265.95	172.12	-0-	-0-	-0-
Ellis	2,021.03	2,180.00	750.80	9.95	471.60
Garfield	3,326.88	-0-	-0-	-0-	-0-
Garvin	261.98	765.90	944.45	343.80	34.28
Grady	687.49	150.76	-0-	-0-	-0-
Grant	2,011.72	2,365.14	-0-	1.01	-0-
Greer	-0-	574.90	769.20	679.70	338.52
Harmon	48.07	-0-	-0-	-0-	-0-
Harper	1,076.89	556.63	118.66	-0-	-0-
Haskell	-0-	-0-	-0-	*	*
Hughes	659.78	-0-	-0-	-0-	-0-
Jackson	-0-	-0-	-0-	-0-	-0-
Jefferson	-0-	-0-	-0-	-0-	-0-
Johnston	-0-	4.42	-0-	-0-	-0-
Kay	3,636.86	-0-	-0-	-0-	1,964.00
Kingfisher	6,012.64	13.25	-0-	-0-	-0-
Kiowa	-0-	-0-	-0-	-0-	-0-
Latimer	-0-	-0-	-0-	-0-	-0-
LeFlore	-0-	1,719.92	670.03	-0-	-0-
Lincoln	-0-	-0-	-0-	-0-	-0-
Logan	-0-	-0-	-0-	-0-	-0-
Love	861.91	255.89	34.13	35.40	121.12
McClain	-0-	-0-	-0-	-0-	-0-
McCurtain	-0-	52.70	-0-	-0-	-0-
McIntosh	4,245.53	-0-	-0-	138.73	261.60
Major	-0-	1,165.01	-0-	-0-	*
Marshall	289.50	-0-	479.85	-0-	-0-
Mayes	231.43	-0-	-0-	-0-	-0-
Murray	443.61	-0-	-0-	-0-	92.69
Muskogee	-0-	-0-	-0-	-0-	-0-
Noble	-0-	-0-	-0-	-0-	-0-
Nowata	-0-	-0-	-0-	-0-	-0-
Okfuskee	1,709.00	615.25	368.90	2,057.97	-0-
Oklahoma	84,768.45	-0-	-0-	-0-	-0-
Okmulgee	-0-	-0-	-0-	-0-	-0-
Osage	4,627.20	-0-	-0-	-0-	-0-
Ottawa	-0-	-0-	-0-	-0-	-0-
Pawnee	1,294.06	-0-	-0-	-0-	-0-
Payne	4,484.51	-0-	-0-	-0-	-0-
Pittsburg	219.38	1,510.66	-0-	-0-	-0-
Pontotoc	-0-	-0-	-0-	-0-	-0-
Pottawatomie	344.51	490.23	-0-	-0-	-0-
Pushmataha	788.55	253.00	49.40	403.89	*
Roger Mills	2,296.56	-0-	-0-	-0-	906.89
Rogers	3,673.41	-0-	-0-	-0-	-0-
Seminole	-0-	361.50	-0-	-0-	-0-
Sequoyah	-0-	-0-	-0-	-0-	*
Stephens	-0-	-0-	-0-	-0-	-0-
Texas	2,082.77	255.45	209.30	-0-	-0-
Tillman	-0-	-0-	-0-	-0-	-0-
Tulsa	-0-	-0-	-0-	-0-	-0-
Wagoner	-0-	-0-	-0-	-0-	-0-
Washington	-0-	2,721.64	1,047.64	229.56	*
Washita	4,081.71	967.95	705.40	1,222.70	*
Woods	2,871.98	1,371.30	-0-	-0-	-0-
Woodward	33.86	1,603.64	-0-	-0-	-0-
TOTALS:	\$ 156,161.38	\$ 27,740.51	\$ 7,883.74	\$ 4,033.77	\$ 4,245.32

* Reports not included

DEFENSE SERVICES FOR INDIGENT PERSONS (Trial Courts from Court Fund)

YEAR	TOTAL DEFENSE EXPENDITURE	ATTORNEY FEES TRIAL COURT	ATTORNEY FEES APPEALS	TRANSCRIPTS ORDERED BY THE COURT
1976	1,516,533	1,240,541	62,387	213,605
1977	1,633,837	1,228,326	89,793	205,718
1978	1,602,286	1,341,647	70,936	189,703
1979	1,661,672	1,466,333	47,644	147,696
1980	2,175,476	1,802,576	161,706	211,193

KEY — Total Defense Services
Attorney Fees—Trial Court
Attorney Fees—Appeals
Transcripts Ordered By the Court * * *



COURT FUND EXPENDITURES FOR PROVIDING DEFENSE SERVICES TO INDIGENT PERSONS								
COURT APPOINTED ATTORNEY FEES FOR INDIGENTS				TRANSCRIPTS ORDERED BY THE COURT				
COUNTY	TRIAL COURT	APPEALS	PUBLIC DEFENDER PROGRAM	TOTAL FEES	PRELIMINARY HEARINGS OR TRIAL	APPEALS	TOTAL TRANSCRIPTS	TOTAL EXPENDITURE
Adair	9,485.00	—0—	—0—	9,485.00	246.00	—0—	246.00	9,731.00
Alfalfa	3,902.75	—0—	—0—	3,902.75	—0—	40.50	40.50	3,943.25
Atoka	10,855.00	—0—	—0—	10,855.00	63.00	—0—	63.00	10,918.00
Beaver	1,905.00	—0—	—0—	1,905.00	—0—	145.00	145.00	2,050.00
Beckham	8,700.00	2,000.00	—0—	10,700.00	3,277.50	1,669.50	4,947.00	15,647.00
Blaine	6,060.00	—0—	—0—	6,060.00	2,661.00	—0—	2,661.00	8,721.00
Bryan	27,075.00	500.00	—0—	27,575.00	1,444.50	1,200.00	2,644.50	30,219.50
Caddo	18,050.06	—0—	—0—	18,050.06	1,315.50	—0—	1,315.50	19,365.56
Canadian	2,625.00	—0—	—0—	2,625.00	1,377.00	—0—	1,377.00	4,002.00
Carter	53,161.42	—0—	—0—	53,161.42	3,999.00	3,722.00	7,721.00	60,882.42
Cherokee	12,150.00	—0—	597.00	12,150.00	1,310.50	—0—	1,310.00	13,460.50
Choctaw	9,320.50	1,200.00	—0—	10,520.50	2,220.00	817.50	3,037.50	13,558.00
Cimarron	1,025.00	—0—	—0—	1,025.00	—0—	—0—	—0—	1,025.00
Cleveland	50,320.00	—0—	—0—	50,320.00	10,341.40	—0—	10,341.00	60,661.65
Coal	9,465.00	—0—	—0—	9,465.00	—0—	—0—	—0—	9,465.00
Comanche	135,490.00	—0—	—0—	135,490.00	19,498.00	—0—	19,498.00	154,988.00
Cotton	14,075.00	—0—	—0—	14,075.00	1,659.19	109.50	1,768.69	15,843.69
Craig	19,620.00	4,650.79	—0—	24,470.79	1,980.00	769.50	2,749.50	27,220.29
Creek	19,176.50	13,566.00	—0—	32,742.50	2,594.25	1,603.50	4,197.75	36,940.25
Custer	17,975.00	—0—	—0—	17,975.00	3,923.00	—0—	3,923.00	21,898.00
Delaware	7,775.00	—0—	—0—	7,775.00	—0—	—0—	—0—	7,775.00
Dewey	965.00	—0—	965.00	965.00	174.00	—0—	174.00	1,139.00
Ellis	1,750.00	—0—	—0—	1,750.00	55.50	—0—	55.50	1,805.50
Garfield	30,300.00	250.00	—0—	30,550.00	4,183.50	1,800.50	6,084.00	36,634.00
Garvin	6,050.00	250.00	—0—	6,300.00	1,124.00	—0—	1,124.00	7,424.00
Grady	25,835.00	—0—	—0—	25,835.00	913.75	840.00	1,753.75	27,588.75
Grant	1,300.00	—0—	—0—	1,300.00	70.00	—0—	70.00	1,370.00
Greer	6,550.00	—0—	—0—	6,550.00	1,399.43	442.50	1,841.93	8,391.93
Harmon	2,760.00	—0—	—0—	2,760.00	390.00	—0—	390.00	3,150.00
Harper	2,650.00	—0—	—0—	2,650.00	580.50	922.50	1,503.00	4,153.00
Haskell	10,450.00	—0—	—0—	10,450.00	—0—	—0—	—0—	10,450.00
Hughes	19,856.00	—0—	—0—	19,856.00	498.00	—0—	498.00	20,354.00
Jackson	8,130.00	—0—	—0—	8,130.00	6.00	1,384.50	1,390.50	9,520.50
Jefferson	4,150.00	—0—	—0—	4,150.00	41.00	96.00	137.00	4,287.00
Johnston	5,769.00	250.00	—0—	6,019.00	74.00	19.50	93.50	6,112.50
Kay	32,145.00	1,950.00	785.50	34,095.00	1,035.00	—0—	1,035.00	35,130.00
Kingfisher	7,574.00	—0—	—0—	7,574.00	725.56	—0—	725.56	8,299.56
Kiowa	5,925.00	—0—	—0—	5,925.00	126.00	—0—	126.00	6,051.00
Latimer	4,695.00	—0—	—0—	4,695.00	502.50	—0—	502.50	5,197.50
LeFlore	40,977.90	2,500.00	—0—	43,477.90	3,760.00	967.00	4,727.00	48,204.90
Lincoln	7,516.00	250.00	—0—	7,766.00	1,157.50	825.00	1,982.50	9,748.50
Logan	20,115.00	750.00	—0—	20,865.00	1,614.00	445.50	2,059.50	22,924.50
Love	5,445.00	—0—	—0—	5,445.00	1,912.00	—0—	1,912.00	7,357.00
Major	1,485.15	—0—	—0—	1,485.15	—0—	—0—	—0—	1,485.15
Marshall	7,132.22	—0—	—0—	7,132.22	348.00	—0—	—0—	7,480.22
Mayes	19,503.29	250.00	—0—	19,753.29	3,039.00	890.50	3,929.50	23,682.79
McClain	7,538.22	—0—	—0—	7,538.22	863.60	—0—	863.60	8,401.82
McCurtain	17,383.10	750.00	—0—	18,133.10	2,184.50	15.00	2,199.50	20,332.60
McIntosh	9,257.00	—0—	—0—	9,257.00	586.50	1,222.50	1,809.00	11,066.00
Murray	9,865.00	600.00	—0—	10,465.00	1,495.50	—0—	1,495.50	11,960.50
Muskogee	50,650.00	1,000.00	—0—	52,650.00	8,619.00	1,245.00	9,864.00	61,514.00
Noble	14,125.00	—0—	—0—	14,125.00	2,366.50	—0—	2,366.50	16,491.50
Nowata	4,800.00	1,000.00	—0—	5,800.00	—0—	37.50	37.50	5,837.50
Okfuskee	3,224.46	—0—	—0—	3,224.46	433.50	—0—	433.50	3,657.96
Oklahoma	24,483.57	113,974.68	324,984.89	138,458.25	11,932.20	10,985.00	22,917.20	161,375.45
Okmulgee	11,158.00	—0—	—0—	11,158.00	1,975.50	694.50	2,650.00	13,810.00
Osage	6,708.00	500.00	—0—	7,208.00	2,097.00	651.00	2,748.00	9,956.00
Ottawa	35,820.00	3,013.85	—0—	38,833.85	1,021.50	2,114.50	3,136.00	41,969.85
Pawnee	750.00	—0—	725.00	750.00	289.50	—0—	289.50	1,039.50
Payne	82,640.00	1,250.00	—0—	83,890.00	2,166.00	570.00	2,736.00	86,626.00
Pittsburg	27,672.00	150.00	—0—	27,822.00	1,326.25	3,678.00	5,004.25	32,826.25
Pontotoc	17,235.36	—0—	—0—	17,235.36	1,662.50	346.50	2,009.00	19,244.36
Pottawatomie	35,466.90	—0—	—0—	35,466.90	4,865.30	—0—	4,865.30	40,332.20
Pushmataha	4,415.00	200.00	—0—	4,615.00	711.00	—0—	711.00	5,326.00
Roger Mills	1,550.00	—0—	—0—	1,550.00	493.50	—0—	493.50	2,043.50
Rogers	22,755.00	1,550.36	—0—	24,305.36	1,723.50	1,350.00	3,073.50	27,378.86
Seminole	11,043.15	—0—	—0—	11,043.15	1,245.00	637.00	1,882.00	12,925.15
Sequoyah	9,990.00	6,500.00	—0—	16,490.00	1,700.50	—0—	1,700.00	18,190.50
Stephens	29,481.25	—0—	—0—	29,481.25	1,278.50	118.50	1,297.00	30,778.25
Texas	13,214.00	350.00	—0—	13,564.00	1,698.50	—0—	1,698.50	15,262.50
Tillman	5,400.00	—0—	—0—	5,400.00	283.50	—0—	283.50	5,683.50
Tulsa	—0—	—0—	256,496.00	—0—	9,163.62	15,508.50	24,672.12	24,672.12
Wagoner	8,354.18	—0—	—0—	8,354.18	4,170.00	—0—	4,170.00	12,524.18
Washington	29,247.00	2,500.00	—0—	31,747.00	3,543.50	457.50	4,001.00	35,748.00
Washita	3,695.00	—0—	—0—	3,695.00	—0—	660.25	660.25	4,355.25
Woods	4,400.00	—0—	—0—	4,400.00	38.00	—0—	38.00	4,438.00
Woodward	8,128.20	—0—	—0—	8,128.20	34.50	151.50	186.00	8,314.20
TOTALS:	1,218,988.43	161,705.68	583,588.39	1,964,282.50	151,939.55	59,253.75	211,193.30	2,175,475.80

EXPENDITURES LOCALLY FOR OPERATION OF DISTRICT COURTS					
COUNTY	COURT FUNDS EXPENDITURE FOR OPERATION OF THE COURT	PAID COUNTY GENERAL FUND	PAID LAW ENFORCEMENT TRAINING FUND	EXPENDITURE FROM COUNTY GENERAL FUND FOR COURT CLERK	TOTALS
Adair	47,175.51	20,637.98	1,604.00	23,029.90	92,457.39
Alfalfa	29,748.11	—0—	1,518.00	36,698.60	67,964.71
Atoka	46,897.06	5,109.00	1,831.00	24,411.90	78,248.96
Beaver	42,168.18	13,980.96	1,800.00	36,824.78	94,773.92
Beckham	67,502.79	27,015.00	3,521.00	40,149.81	138,188.60
Blaine	87,593.84	10,335.00	2,797.00	54,791.95	155,517.79
Bryan	119,310.31	27,798.00	5,103.00	61,689.61	213,900.92
Caddo	137,702.94	29,035.44	8,753.00	102,387.17	277,205.55
Canadian	185,786.97	12,316.00	7,479.24	112,203.68	317,785.89
Carter	249,628.88	4,073.04	7,885.00	128,923.72	389,923.72
Cherokee	147,819.86	10,149.00	2,521.00	23,298.10	183,887.96
Choctaw	56,569.61	32,922.96	3,675.00	26,277.55	119,445.12
Cimarron	23,415.98	8,055.96	1,251.00	21,869.52	54,592.46
Cleveland	258,505.26	10,791.00	5,246.00	156,549.86	431,092.12
Coal	35,516.80	4,791.00	771.00	16,736.00	57,814.80
Comanche	512,948.89	96,135.96	15,019.00	213,661.95	837,765.80
Cotton	52,035.19	9,231.00	2,903.00	18,382.80	82,551.99
Craig	124,228.41	11,459.37	3,394.00	26,298.94	165,380.77
Creek	181,611.06	25,375.00	7,422.00	111,363.30	325,771.36
Custer	89,682.78	16,520.04	8,056.00	41,400.03	155,658.85
Delaware	64,404.14	9,364.08	1,754.00	37,260.61	112,782.83
Dewey	24,383.73	27,537.70	1,240.00	24,034.57	52,412.00
Ellis	18,686.94	1,250.00	1,758.00	22,648.81	44,343.75
Garfield	227,187.76	11,259.96	6,010.30	126,913.80	371,371.01
Garvin	84,946.13	10,897.98	4,630.00	35,782.21	136,256.32
Grady	143,040.76	31,899.00	11,855.00	89,825.06	276,619.82
Grant	32,637.86	—0—	1,713.00	26,364.58	60,715.44
Greer	38,754.26	—0—	1,181.00	19,217.95	59,152.21
Harmon	26,982.41	—0—	1,877.00	17,275.12	46,134.53
Harper	27,467.85	3,822.00	1,159.00	19,763.92	52,212.77
Haskell	46,214.23	14,726.55	1,982.00	16,396.66	79,319.44
Hughes	50,513.06	—0—	2,868.00	24,865.25	78,246.31
Jackson	131,564.39	7,625.00	3,849.00	34,184.03	174,222.42
Jefferson	47,170.01	4,481.63	2,505.00	20,417.48	74,575.12
Johnston	60,016.51	4,688.01	2,212.00	25,025.58	91,942.10
Kay	198,536.15	17,747.00	5,334.00	109,480.57	331,097.72
Kingfisher	62,022.16	5,148.00	4,260.00	67,023.89	138,454.05
Kiowa	50,535.33	11,328.00	3,913.00	34,420.17	100,196.50
Latimer	40,623.87	—0—	1,374.00	17,314.08	59,311.95
LeFlore	188,109.40	13,016.04	2,429.00	65,623.53	269,177.97
Lincoln	88,111.44	19,872.00	5,804.00	36,359.48	150,146.94
Logan	130,383.16	28,702.00	4,007.00	49,766.66	212,858.82
Love	51,335.30	9,073.80	2,577.00	18,060.00	81,046.10
Major	29,802.88	—0—	1,497.00	38,800.88	70,106.76
Marshall	61,885.28	—0—	1,866.00	20,591.50	84,342.78
Mayes	180,193.28	—0—	4,800.00	44,729.52	229,726.80
McClain	72,623.53	29,915.00	6,344.00	39,903.71	148,786.24
McCurtain	108,367.43	3,102.96	2,589.00	36,679.00	150,738.39
McIntosh	115,193.84	13,665.96	6,800.00	24,749.67	160,409.47
Murray	63,485.36	24,468.96	5,378.00	16,858.56	110,190.88
Muskogee	351,491.45	—0—	7,859.00	90,532.91	449,883.36
Noble	65,141.85	16,779.00	2,240.00	35,900.19	120,061.04
Nowata	30,379.76	1,164.50	1,294.00	26,029.44	58,867.70
Oklfuskee	36,463.30	6,711.00	4,574.00	20,639.00	68,387.30
Oklahoma	1,779,692.11	—0—	21,736.00	1,247,296.28	3,048,724.39
Okmulgee	122,445.61	16,306.00	3,660.00	53,628.93	196,040.56
Osage	123,770.37	19,970.00	4,846.00	71,623.75	219,660.34
Ottawa	158,770.37	13,604.00	3,276.00	77,503.12	253,153.49
Pawnee	305,199.00	—0—	4,342.00	20,127.96	329,668.96
Payne	185,257.85	26,188.68	7,306.00	79,654.32	29,840.85
Pittsburg	187,739.31	34,601.00	6,383.00	75,035.98	303,759.29
Pontotoc	163,256.85	—0—	3,593.00	55,138.33	221,988.18
Pottawatomie	192,885.73	2,143.30	6,620.00	111,284.67	312,933.70
Pushmataha	53,870.00	103.50	1,524.00	11,021.28	66,518.87
Roger Mills	12,422.03	—0—	932.00	21,822.76	35,176.79
Rogers	269,187.78	24,549.96	7,673.00	50,166.16	351,576.90
Seminole	100,589.87	17,368.00	3,260.00	61,960.06	183,177.93
Sequoyah	123,939.47	9,569.00	5,828.00	34,762.53	174,098.99
Stephens	165,836.60	—0—	5,784.00	77,246.61	248,867.21
Texas	86,982.67	21,743.04	3,532.00	51,099.37	163,357.08
Tillman	50,150.35	—0—	1,689.00	29,211.30	81,050.65
Tulsa	1,934,489.34	—0—	13,620.40	1,139,667.52	3,087,777.26
Wagoner	109,059.63	33,441.96	6,837.00	36,458.33	185,796.92
Washington	138,191.30	—0—	3,599.00	89,391.14	231,181.44
Washita	53,683.42	3,789.00	3,107.00	3,138.34	91,957.76
Woods	41,452.27	—0—	1,357.00	31,806.60	74,615.87
Woodward	65,629.26	—0—	3,329.00	69,348.68	138,306.94
TOTAL:	11,867,772.25	902,563.28	737,918.64	6,136,568.65	19,244,822.82

COUNTY LAW LIBRARIES

Under authority of 20 O. S. 1971 § 1201, a County Law Library may be established in each county. The Library use is free to all members of the Oklahoma Bar Association, all state and county officials, and residents of the county, but with proper regulations. The Law Library is funded by deposits from the court fund upon payment of court costs for filing certain civil actions. All expenditures for books, periodicals, reference materials, and maintenance of the Law Library are made from these funds. An additional transfer of funds for operational expenses can be made from the Court Fund under certain prevailing conditions.

The following chart illustrates the revenue and expenditures for the County Law Libraries. In some counties the expenditures exceeded the collections. This does not necessarily mean the operation was in the "red". However, the expenditures made were from surplus funds accumulated over the years in the funds retained for operation of the Law Library.

OPERATION OF COUNTY LAW LIBRARIES

COUNTY	1980	
	REVENUE	EXPENDITURES
Adair	\$.	\$.
Alfalfa	4,812.00	4,814.45
Atoka	4,078.50	2,769.85
Beaver	.	.
Beckham	6,079.00	6,378.41
Blaine	6,618.50	6,741.40
Bryan	5,975.50	7,642.82
Caddo	7,572.00	7,005.68
Canadian	12,005.58	11,723.63
Carter	12,243.50	12,366.73
Cherokee	7,625.00	5,872.33
Choctaw	4,654.00	5,078.47
Cimarron	4,560.00	4,284.75
Cleveland	12,920.00	14,026.22
Coal	4,036.00	3,811.15
Comanche	18,876.50	19,061.42
Cotton	5,358.00	4,454.16
Craig	6,826.50	6,836.76
Creek	.	.
Custer	7,689.50	7,773.70
Delaware	5,619.00	5,686.50
Dewey	1,588.50	1,612.20
Ellis	2,298.00	1,443.95
Garfield	14,848.05	14,375.14
Garvin	4,800.50	4,183.80
Grady	9,234.00	7,035.62
Grant	5,016.00	4,362.58
Greer	589.50	783.30
Harmon	2,981.30	2,957.35
Harper	4,395.50	4,465.45
Haskell	.	.
Hughes	5,814.50	5,346.97
Jackson	9,570.00	7,538.83
Jefferson	5,782.00	5,151.95
Johnston	3,462.00	2,931.22
Kay	16,949.50	10,786.43
Kingfisher	6,721.00	6,728.54
Kiowa	7,034.00	6,583.07
Latimer	6,057.00	6,104.17
LeFlore	5,632.50	5,459.99
Lincoln	7,605.50	7,573.45
Logan	7,941.00	8,023.59
Love	2,969.50	2,544.20
McClain	4,512.50	4,238.70
McCurtain	5,714.00	5,589.47
McIntosh	5,040.50	4,008.50
Major	.	.
Marshall	4,101.00	4,011.55
Mayes	8,612.00	8,571.96
Murray	6,264.00	4,609.50
Muskogee	15,406.64	12,964.08
Noble	5,000.00	4,725.70
Nowata	5,193.50	4,585.92
Okfuskee	5,282.00	6,785.62
Oklahoma	125,300.95	123,887.70
Okmulgee	7,922.50	7,893.68
Osage	8,287.00	7,996.85
Ottawa	7,409.00	6,979.85
Pawnee	5,969.00	4,719.67
Payne	11,476.50	12,732.02
Pittsburg	10,249.00	9,147.80
Pontotoc	7,925.69	7,993.14
Pottawatomie	10,871.50	10,302.25
Pushmataha	.	.
Roger Mills	939.50	1,619.17
Rogers	10,489.50	10,268.40
Seminole	8,210.85	8,211.47
Sequoyah	.	.
Stephens	11,253.50	11,134.97
Texas	9,062.00	9,183.40
Tillman	6,404.00	5,815.85
Tulsa	78,040.00	65,031.34
Wagoner	.	.
Washington	.	.
Washita	5,937.50	6,680.26
Woods	6,110.50	5,895.74
Woodward	7,775.50	7,765.00
TOTAL:	\$ 673,598.03	\$ 635,672.95

*Report not received

END