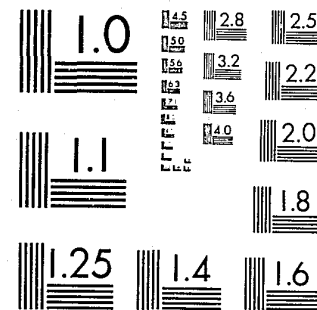


National Criminal Justice Reference Service

ncjrs

This microfiche was produced from documents received for inclusion in the NCJRS data base. Since NCJRS cannot exercise control over the physical condition of the documents submitted, the individual frame quality will vary. The resolution chart on this frame may be used to evaluate the document quality.



MICROCOPY RESOLUTION TEST CHART
NATIONAL BUREAU OF STANDARDS-1963-A

Microfilming procedures used to create this fiche comply with the standards set forth in 41CFR 101-11.504.

Points of view or opinions stated in this document are those of the author(s) and do not represent the official position or policies of the U. S. Department of Justice.

National Institute of Justice
United States Department of Justice
Washington, D. C. 20531

4/13/83



CRIME IN UTAH/1980





SCOTT M. MATHESON
Governor

THE STATE OF UTAH

DEPARTMENT OF PUBLIC SAFETY
317 State Office Building
Salt Lake City, Utah 84114
(801) 533-4900



LARRY E. LUNNEN
Commissioner

I am pleased to present the 3rd annual "Crime in Utah" publication. The information and statistics presented in this report provide an assessment of the statewide crime problem as known to law enforcement. Participating law enforcement agencies have submitted data which was then used in the compilation of this report.

It is our hope that this report will provide valuable information, not only for law enforcement in Utah, but for interested public and private agencies throughout the state.

Thanks is expressed to the law enforcement personnel and agencies without whose cooperation and support this publication would not be possible.

Larry E. Lunnen

Larry E. Lunnen
Commissioner

NCJRS

APR 14 1983

ACQUISITIONS

U.S. Department of Justice
National Institute of Justice

This document has been reproduced exactly as received from the person or organization originating it. Points of view or opinions stated in this document are those of the authors and do not necessarily represent the official position or policies of the National Institute of Justice.

Permission to reproduce this copyrighted material has been granted by

UTAH BUREAU OF CRIMINAL
INVESTIGATION

to the National Criminal Justice Reference Service (NCJRS).

Further reproduction outside of the NCJRS system requires permission of the copyright owner.

ARCHIVES No. 8100135

TABLE OF CONTENTS

1. Utah State Uniform Crime Annual Report, 1980.....	1
A. Acknowledgments	2
B. Introduction.....	3
C. Objectives	3
D. Reporting Procedures.....	4
E. Limitations	4
F. Definitions	5
G. Clearances	5
2. 1979-80 Utah State Totals	6
A. Crime Clocks.....	7
3. Utah State Part I Crime Breakdown.....	9
A. Murder	10
B. Rape	12
C. Robbery	13
D. Aggravated Assaults	14
E. Burglary	15
F. Larceny/Theft	16
G. Motor Vehicle Theft.....	17
H. Arson.....	17
I. Total Dollar Value of Property Stolen and Recovered.....	18
4. Utah Law Enforcement Officers Killed or Assaulted.....	19
A. Assault by time of day.....	20
B. Killed or Assaulted by circumstance, weapon, injury.....	20
5. Crime and Law Enforcement Officers.....	21
A. Officers and the Community.....	21
B. Full Time Law Enforcement Officers	22
6. Utah Crime Index by Contributor.....	23
7. Crime Rates for Index Offenses.....	28
A. Crime rates by county.....	29
8. Utah Arrest Data	30
A. Arrest Totals.....	31
B. Total Arrest by Agency	32

ACKNOWLEDGMENTS

The Departmental Staff extends its appreciation to all law enforcement agencies of Utah who contribute to the Uniform Crime Reporting program. Their consistent, accurate reports are the basis of this document.

Special appreciation is extended to the Federal Bureau of Investigation Uniform Crime Reporting Section for the assistance provided to the Utah UCR program.

UTAH DEPARTMENT OF PUBLIC SAFETY

Larry E. Lunnen, Commissioner

LAW ENFORCEMENT SERVICES

L. Del Mortensen, Director

STATE BUREAU OF CRIMINAL IDENTIFICATION

Byron Penrod, Chief

PREPARED BY

Richard R. Horlacher, UCR Manager

Dan Taylor, UCR Field Representative, Southern Utah

Chris Vermillion, UCR Field Representative, Northern Utah

INTRODUCTION

Prior to 1977, no mandatory Uniform Crime Reporting law existed in Utah, and less than 25% of law enforcement agencies were regularly contributing directly to the FBI. The need for accurate statistical information on the number of offenses and offenders has long been recognized. The system developed on a state level in Utah gives us vital information that is now assisting law enforcement agencies by furnishing data for their management decisions and planning programs.

OBJECTIVES

The purpose of the UCR program is to collect, analyze, and disseminate information that will present a more relevant and timely picture of criminality in our state. This publication will inform the Governor, Legislature, other government officials, and the public as to the nature of the crime problem in Utah.

REPORTING PROCEDURES

Each agency is responsible for compiling its own crime reports and submitting them to the Uniform Crime Reporting program. The program, in an effort to maintain quality and uniformity in the data received, furnishes full-time field representatives who provide training in Uniform Crime Reporting procedures. All contributors also are furnished with the Uniform Crime Reporting Handbook which outlines in detail procedures for scoring and classifying offenses. Utah UCR forms and tally sheets are made available to facilitate the periodic tabulation of desired data.

LIMITATIONS OF A UNIFORM CRIME REPORTING PROGRAM

The Uniform Crime Reporting program has been subject to much criticism during its history and, while many of these commentaries have been valid, at least some of the shortcomings are understandable when it is remembered that the program has been developed to furnish management information primarily for law enforcement agencies. The Uniform Crime Reports are not a court or corrections statistical program. They are not designed to furnish an overview of the workings of our entire criminal justice system, nor are they able to give a complete picture of law enforcement activity.

The main goal of the UCR program is to furnish police administrators with a measure of their activities and operational problems as indicated by the number of reported offenses, arrests, clearances, and the like. Therefore, much of the criticism of the UCR program itself is weakened when its stated primary purpose is kept in mind. Uniform Crime Report data is the best crime information currently available since it reflects the key events (criminal offenses) that set in motion the various phases of our criminal justice process.

DEFINITIONS

To provide for uniformity nationwide in the reporting of these offenses, standardized definitions were adopted. These Part I Index Crimes are defined as follows:

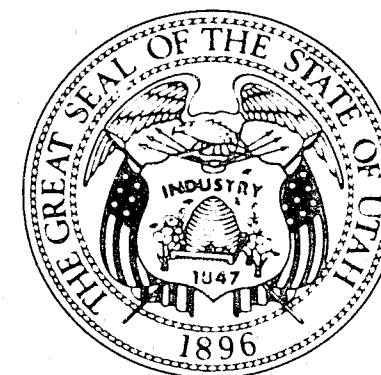
- 1A. Murder - The willful (non-negligent) killing of a human being.
- 1B. Manslaughter - The killing of a human being by the act, procurement, or culpable negligence of another.*
2. Forcible Rape - The carnal knowledge of a female forcibly and against her will.
3. Robbery - The felonious and forcible taking of the property of another, against his will, by violence and/or putting him in fear.
4. Aggravated Assault - An attempt or offer, with unlawful force or violence, to do physical injury to another.**
5. Burglary - An unlawful entry or attempted forcible entry of any structure to commit a felony or larceny.
6. Larceny/Theft - The unlawful taking of the property of another with intent to permanently deprive him of ownership.
7. Motor Vehicle Theft - The larceny or attempted larceny of a motor vehicle.
8. Arson - Willful or malicious burning with or without intent to defraud. Includes attempts.

CLEARANCES

For UCR purposes, a crime index offense is cleared when a law enforcement agency has identified the offender, there is enough evidence to charge him, and he is actually taken into custody. The arrest of one person can clear several crimes or several persons may be arrested in the process of clearing one crime. Clearances are also recorded in exceptional circumstances when some element beyond law enforcement control precludes formal charges against the offender.

* These offenses are not included in this publication.

**Beginning in 1980, the statistics on assault will reflect only those classified as aggravated. These include use of firearms, knife or cutting or other dangerous weapon, even though no injury may result. Assault with hands, fists, or feet that cause enough injury to require medical attention are also included.



PART 1 CRIMES

MURDER / 1980

55	45	82%
----	----	-----

- 1. 69% of the victims were male.
- 2. 76% of the offenders were male.
- 3. 87% of the victims were white, 9% black, 2% indian, 2% other.
- 4. 68% of the offenders were white, 8% black, 3% indian, 3% other, 22% unknown.

(percentages rounded)

NO. OF VICTIMS	AGE	NO. OF OFFENDERS
8	Under 15	1
8	15-19	11
9	20-24	5
9	25-29	16
7	30-34	6
3	35-39	5
	40-44	2
1	45-49	1
2	50-54	1
1	55-59	
3	60-64	1
2	65-69	
2	70-over	
	Unknown	13
55	TOTAL	62

RELATIONSHIP OF VICTIM TO OFFENDER

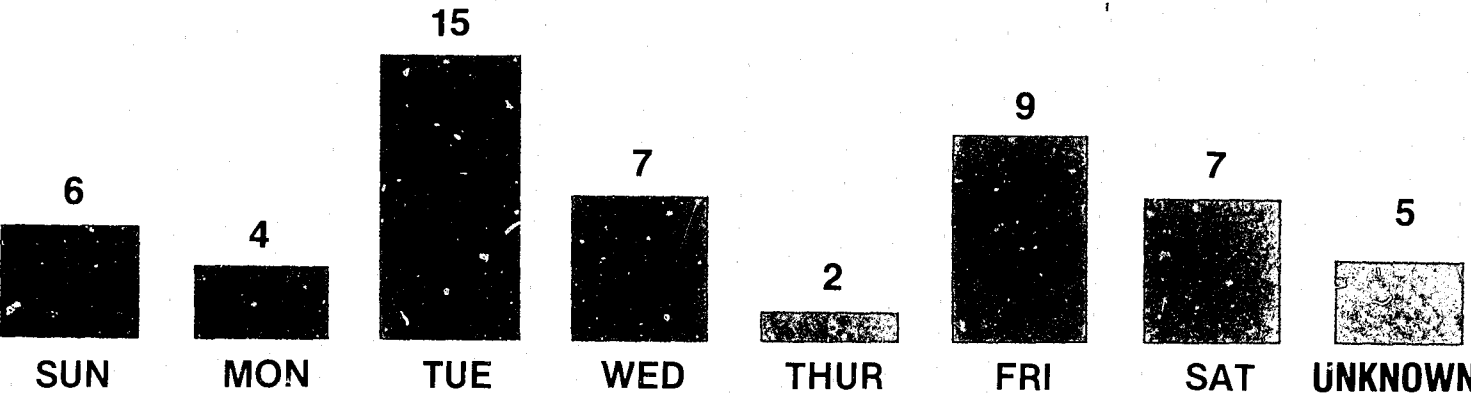
MOTHER	1	SISTER		GIRL FRIEND	2	FRIEND	1
FATHER	1	BROTHER	2	BOY FRIEND	1	STRANGER	17
SON	2	IN-LAWS	1	NEIGHBOR	1	UNKNOWN	11
DAUGHTER	2	STEP SON	1	ACQUAINTANCE	12		

MURDER

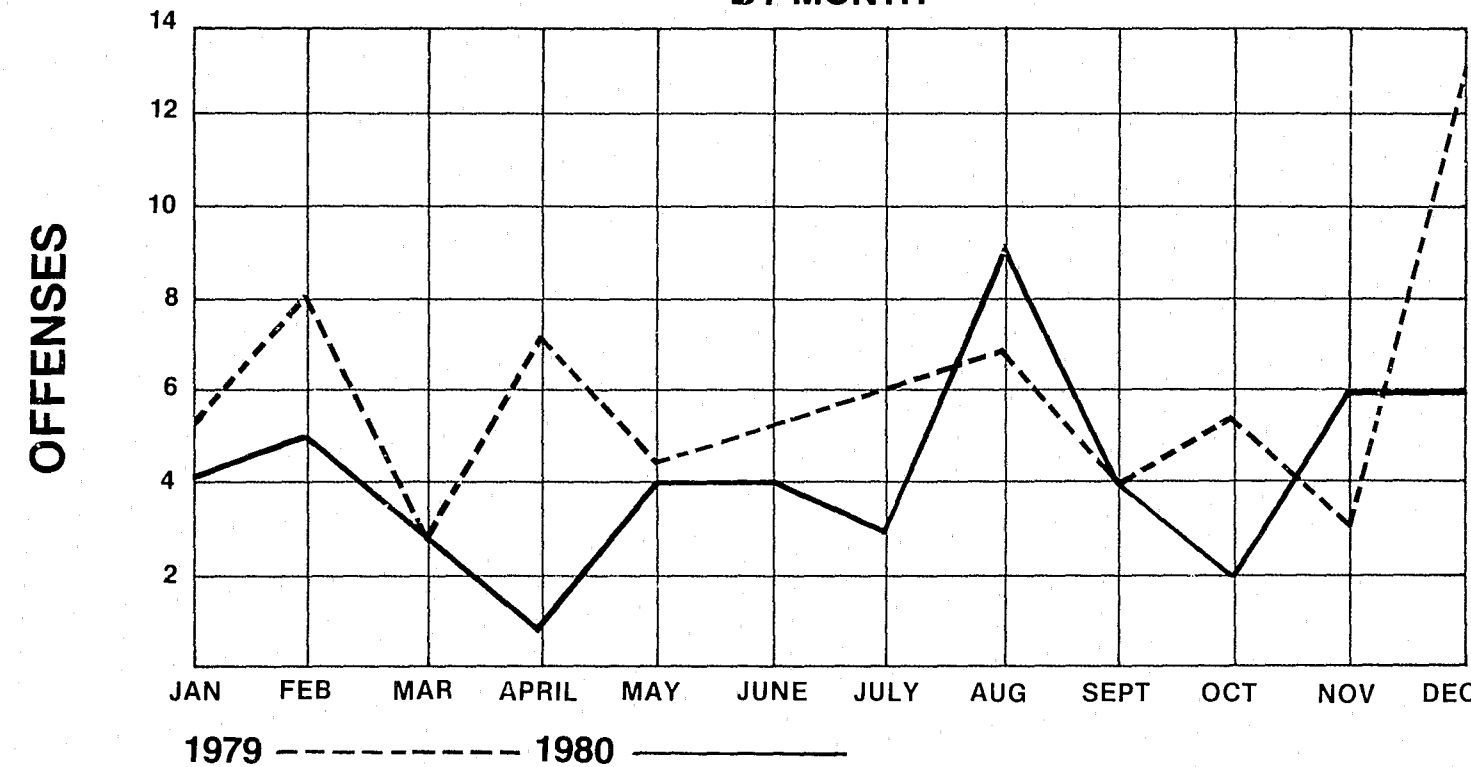
BY TYPE OF WEAPON USED

HAND GUN	20
RIFLE or SHOTGUN	10
CUTTING or STABBING	2
OTHER WEAPON (club, poison, gas, etc.)	9
PERSONAL WEAPON (hands, feet, fist, etc.)	9
UNKNOWN CAUSE OF DEATH	5

BY DAY OF THE WEEK



BY MONTH



RAPE / 1980

OFFENSE	CLEARANCE	RATE
407	229	56%

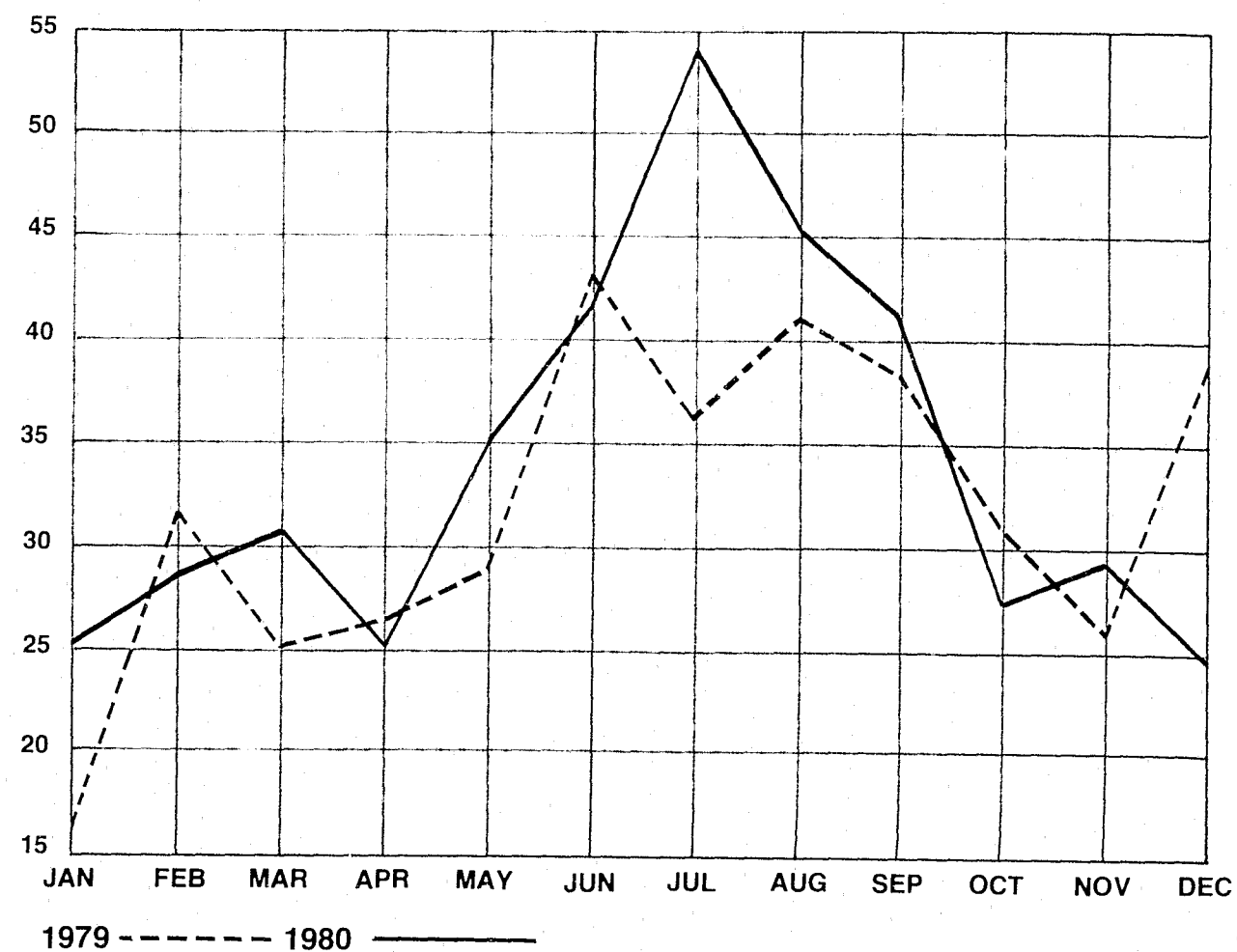
ACTUAL OFFENSES

294

ATTEMPTS 113

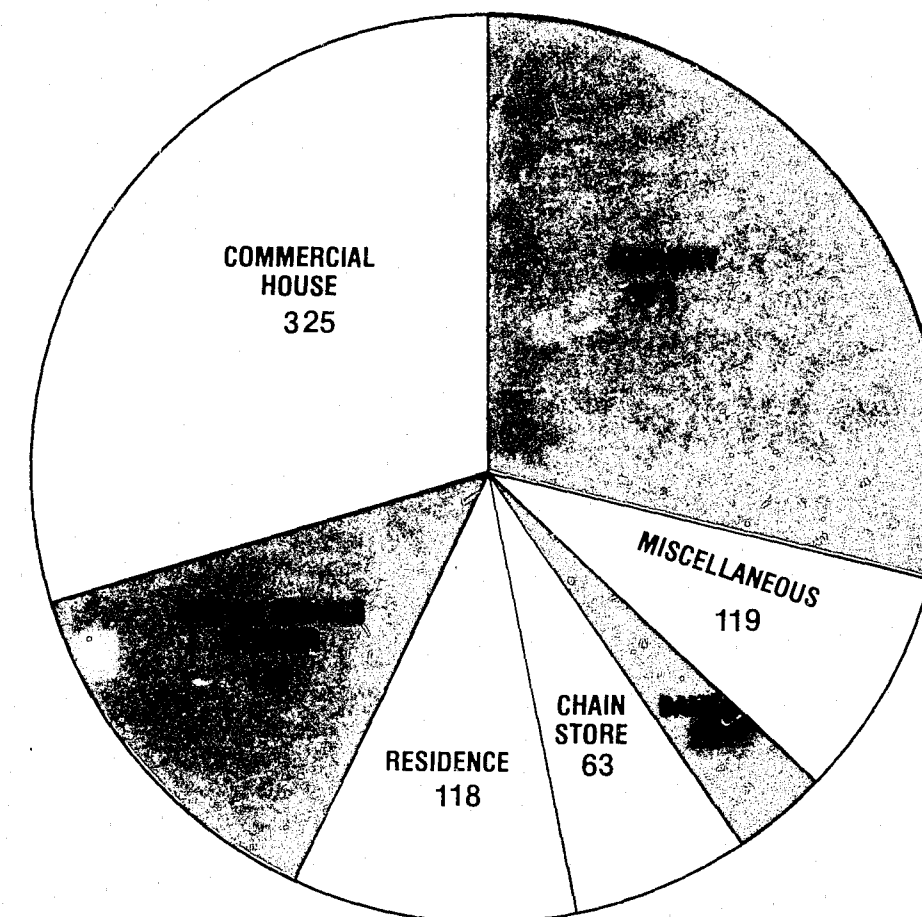
BY MONTHS

OFFENSE



ROBBERY / 1980

OFFENSE	CLEARANCE	RATE
1,170	375	32%



CLASSIFICATION	Number of Offenses	Percent Distribution	Total Value Stolen
HIGHWAY	372	32	\$128,297
COMMERCIAL HOUSE	326	28	\$583,475
GAS or SERVICE STATION	147	13	\$48,531
CHAIN STORE	63	5	\$22,092
RESIDENCE	118	10	\$349,979
BANK	25	2	\$205,192
MISCELLANEOUS	119	10	\$236,244
TOTAL	1,170	100	\$1,573,810

AGGRAVATED ASSAULTS / 1980

Simple*
5,783

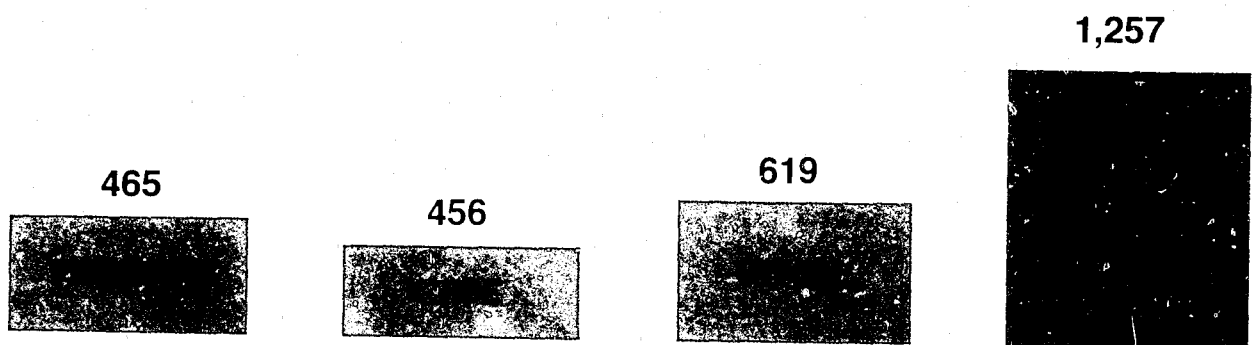
2,797

1,739

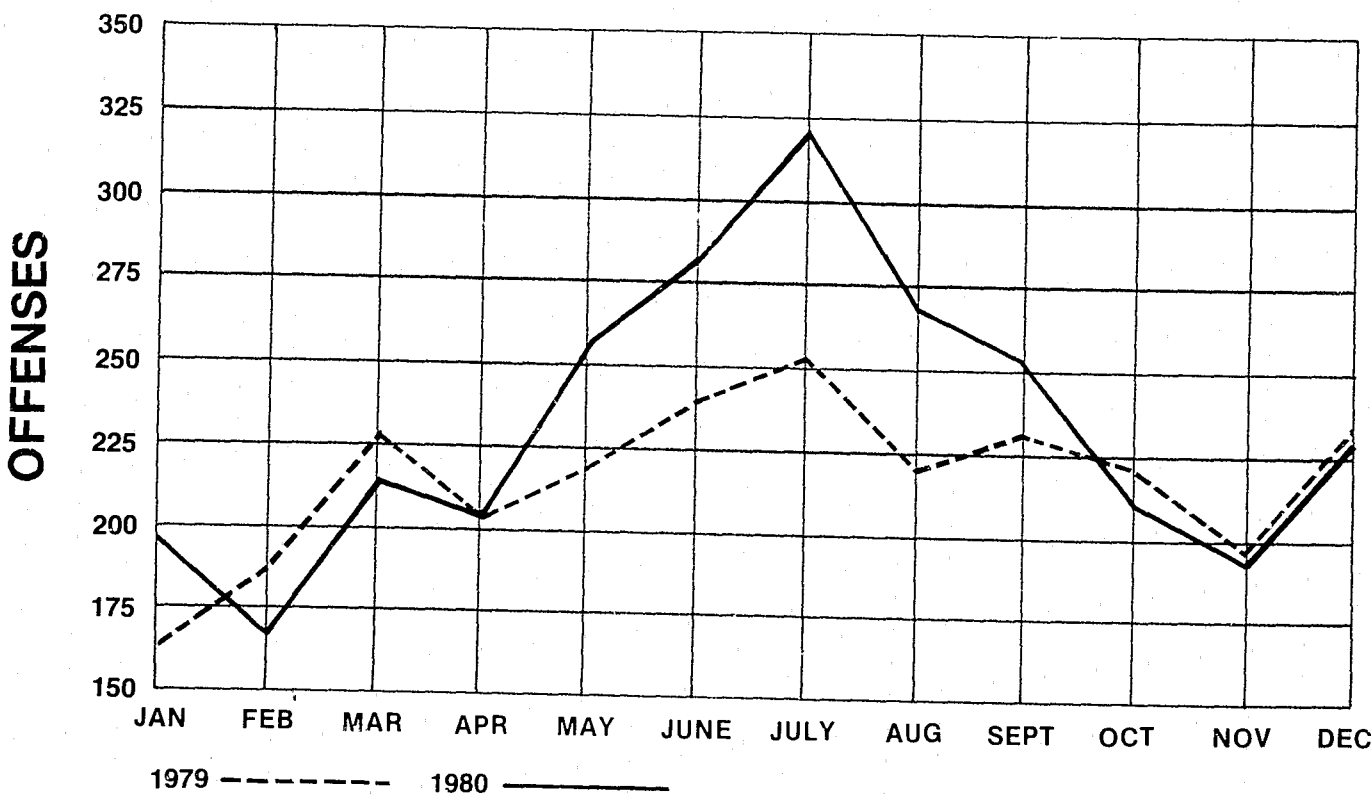
62%

* Beginning in 1980, the statistics on assault will reflect only those classified as aggravated. These include use of firearms, knife or cutting or other dangerous weapon, even though no injury may result. Assault with hands, fists, or feet that cause enough injury to require medical attention are also included.

BY WEAPON



BY MONTHS



BURGLARIES / 1980

19,255

2,798

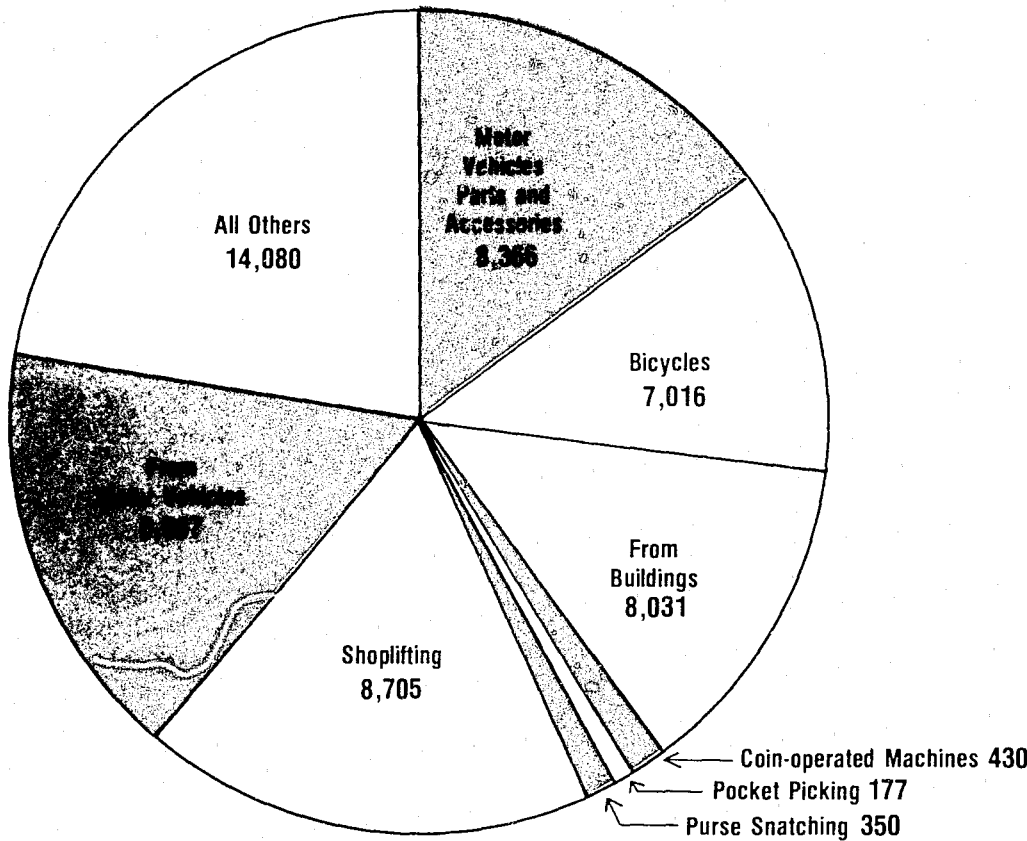
15%

RESIDENCE		NON-RESIDENCE	
4,501	DAY (6 am-6 pm)	735	
4,283	NIGHT (6 pm-6 am)		4,190
3,770	UNKNOWN	1,776	

BURGLARIES / 1980			
RESIDENCE DAY	4,501	23	\$4,143,880
NIGHT	4,283	22	\$3,581,419
UNKNOWN	3,770	20	\$3,228,013
NON-RESIDENCE DAY	735	4	\$409,754
NIGHT	4,190	22	\$3,132,791
UNKNOWN	1,776	9	\$1,292,562
TOTAL	19,255	100	\$15,788,419

LARCENY/THEFT / 1980

OFFENSE	CLEARANCE	RATE
57,122	16,386	29%

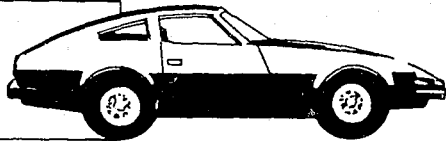


Classification	Number of Offenses	Percent Distribution	Total Value Stolen
POCKET PICKING	177	.3	\$27,703
PURSE SNATCHING	350	.6	\$45,316
SHOPLIFTING	8,705	15.24	\$246,154
FROM MOTOR VEHICLES	9,967	17.45	\$2,729,463
MOTOR VEHICLE PARTS & ACCESSORIES	8,366	14.65	\$1,688,317
BICYCLES	7,016	12.28	\$872,343
FROM BUILDINGS	8,031	14.05	\$3,360,470
COIN OPERATED MACHINES	430	.74	\$64,202
ALL OTHER	14,080	24.64	\$5,928,413
TOTAL	57,122	100	\$14,962,381

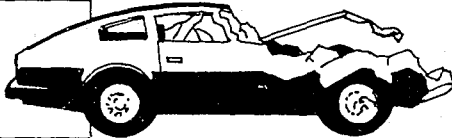
MOTOR VEHICLES / 1980

OFFENSE	CLEARANCE	RATE
4,710	1,564	33%

STOLEN
\$15,691,827.



RECOVERED
\$10,932,544.

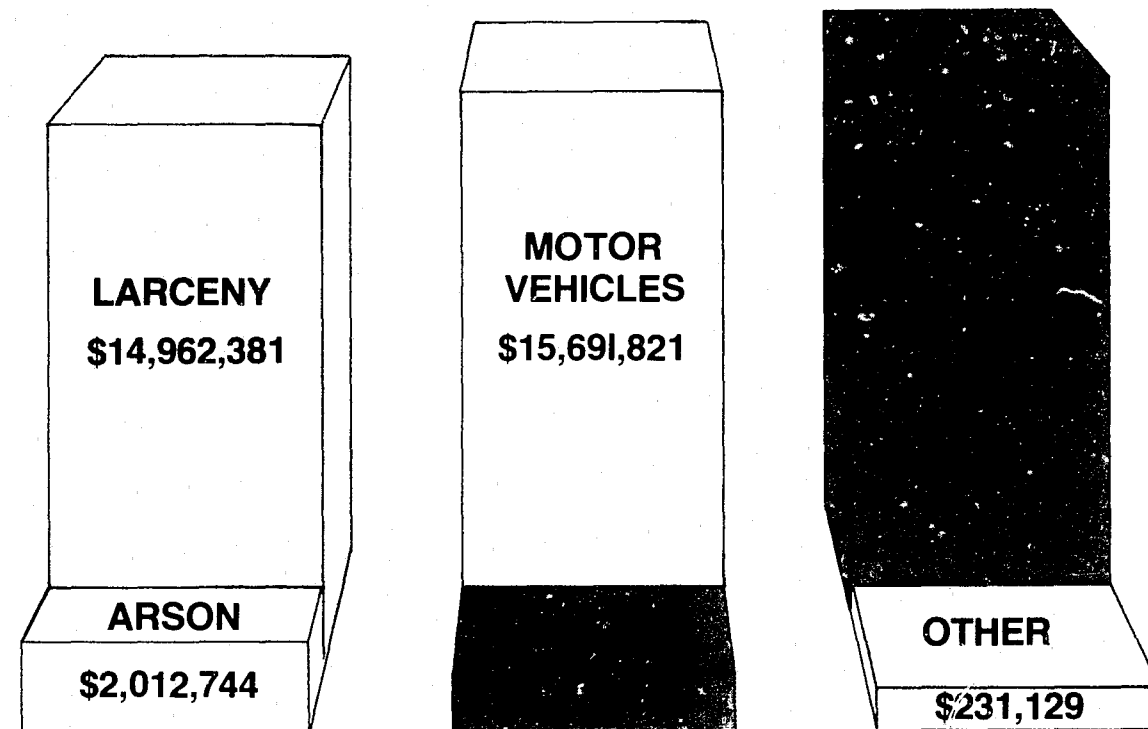


ARSON / 1980

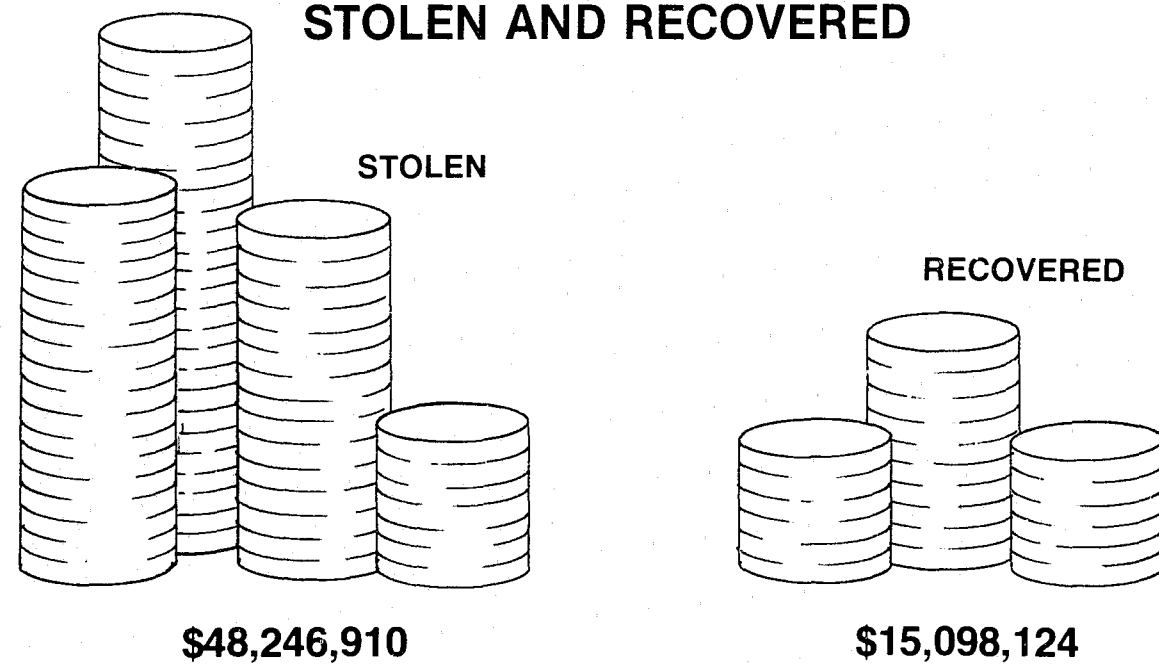
OFFENSE	CLEARANCE	RATE
431	80	19%

OFFENSES	CLEARANCE	STRUCTURES	MOBILE	OTHERS	\$ VALUE
1979	123	181	78	151	\$1,721,277.00
410					
1980	80	205	100	126	\$2,012,744.00
431					

VALUE OF PROPERTY LOST IN CRIME



TOTAL VALUE OF PROPERTY STOLEN AND RECOVERED



UTAH LAW ENFORCEMENT OFFICERS KILLED OR ASSAULTED LAW ENFORCEMENT OFFICER DATA



LAW ENFORCEMENT OFFICERS KILLED OR ASSAULTED

OFFICERS KILLED BY CRIMINAL ACT
0
OFFICERS ASSAULTED
347

LAW ENFORCEMENT OFFICERS ASSAULTED
TIME OF DAY

65	MIDNIGHT
	2:00 AM
45	4:00 AM
	6:00 AM
11	8:00 AM
6	10:00 AM
8	NOON
10	2:00 PM
16	4:00 PM
24	6:00 PM
16	8:00 PM
35	10:00 PM
38	MIDNIGHT
73	

CIRCUMSTANCES

Disturbance call	90
Burglary in progress	4
Robbery in progress	1
Attempting other arrests	84
Civil disorder	6
Handling, transporting prisoners	52
Investigating suspicious persons or circumstances	18
Ambush—no warning	2
Mentally deranged	1
Traffic pursuits & stops	37
All other	52
TOTAL	347

WEAPON

Firearm	25
Knife; cutting instrument	7
Other dangerous weapon	31
Hands, fist, feet	284
TOTAL	347

INJURY

Without injury	258
With injury	89
TOTAL	347

CRIME & LAW ENFORCEMENT
OFFICERS

Crime, as an outgrowth of society, remains a social problem of grave concern and the police are limited in their role to its suppression and detection. This problem is stated in the report "The Challenge of Crime in a Free Society".

"But the fact that the police deal daily with crime does not mean that they have unlimited power to prevent it, or reduce it, or deter it. The police did not create and cannot resolve the social conditions that stimulate crime. They did not start and cannot stop the convulsive social changes that are taking place in America. They do not enact the laws that they are required to enforce, nor do they dispose of the criminals they arrest. The police are only one part of the government; and the government is only one part of society. Insofar as crime is a social phenomenon, crime prevention is the responsibility of every part of society. The criminal process is limited to case by case operations, one criminal or one crime at a time".

OFFICERS
& THE COMMUNITY

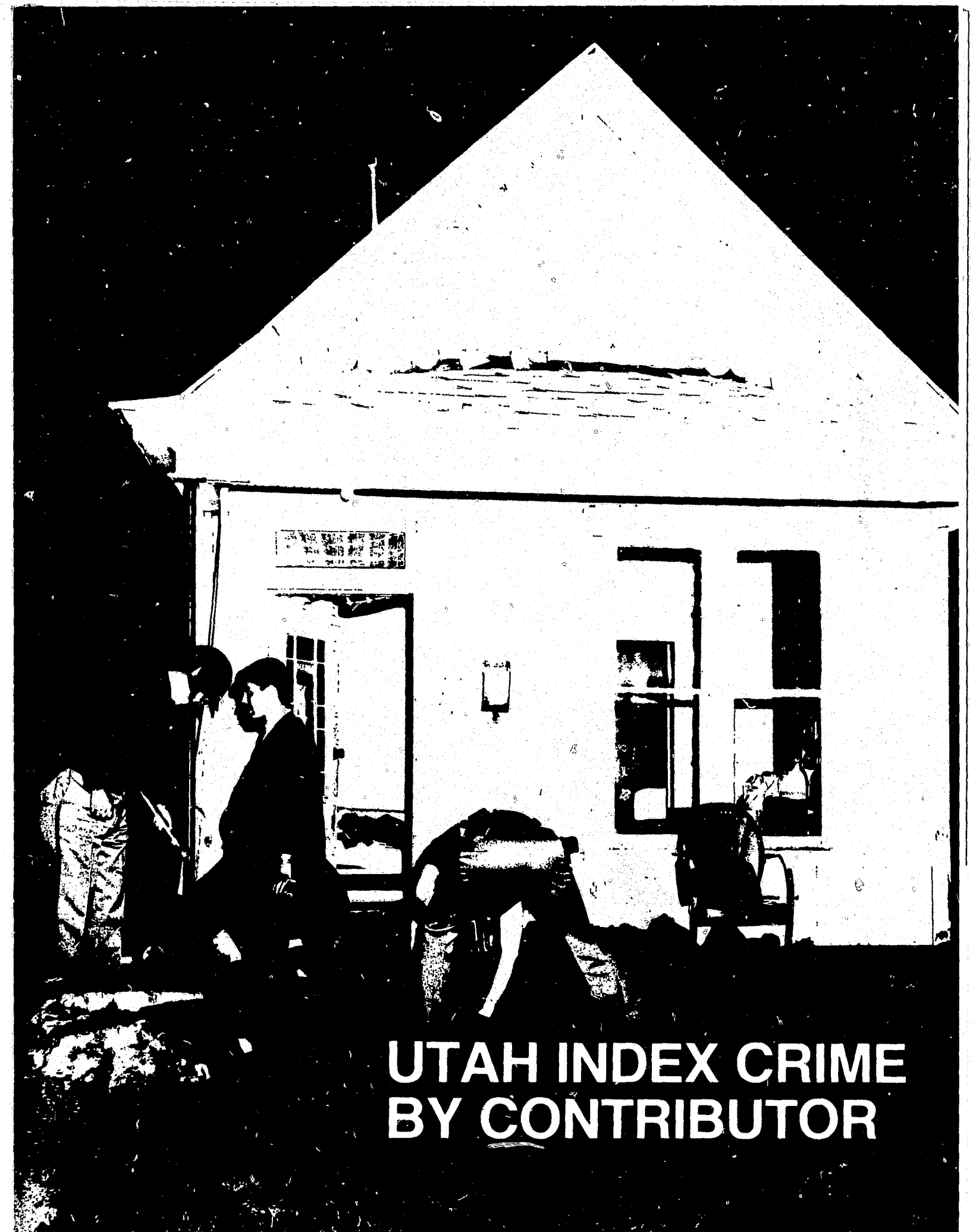
Caution should be exercised in using rates for comparative purposes since a wide variety of factors dictate the number of officers necessary to various law enforcement agencies. The same conditions and factors that affect the amount and type of crime in a given community also must be considered in the employment of personnel. Officer numbers are best determined by citizens and public officials of a community based upon the level of service they need and are willing to pay for.

FULL TIME LAW ENFORCEMENT OFFICERS

Agencies Reporting
(as of October 31, 1980)

COUNTY	ESTIMATED POPULATION	MUNICIPAL OFFICERS	SHERIFF OFFICERS	TOTAL NO. OFFICERS PER COUNTY	OFFICERS PER 1000 POPULATION
BEAVER	4,378		4	4	.91
BOX ELDER	33,222	29	28	57	1.72
CACHE	57,176	41	27	68	1.19
CARBON	22,179	23	14	37	1.67
DAGGETT	769		3	3	3.90
DAVIS	146,540	112	55	167	1.14
DUCHESNE	12,565	15	8	23	1.83
EMERY	11,451		28	28	2.45
GARFIELD	3,673	2	3	5	1.36
GRAND	8,241	9	6	15	1.82
IRON	17,349	16	9	25	1.44
JUAB	5,530	5	4	9	1.63
KANE	4,024		4	4	.99
MILLARD	8,970	5	5	10	1.12
MORGAN	4,917		5	5	1.02
PIUTE	1,329		2	2	1.51
RICH	2,100		3	3	1.43
SALT LAKE	619,066	575	294	869	1.40
SAN JUAN	12,253	2	7	9	.74
SANPETE	14,620	11	4	15	1.03
SEVIER	14,727	13	12	25	1.70
SUMMIT	10,198	8	7	15	1.47
TOOELE	26,033	25	13	38	1.46
UINTAH	20,506	16	12	28	1.37
UTAH	218,106	171	45	216	.99
WASATCH	8,523	7	6	13	1.53
WASHINGTON	26,065	22	8	30	1.15
WAYNE	1,911		2	2	1.05
WEBER	144,616	182	29	211	1.46
COLLEGES & UNIVERSITIES				65	
STATE OFFICERS				452	
TOTAL	1,461,037	1,289	647	2,453	1.68

1979 NATIONAL AVERAGE SWORN OFFICERS PER 1,000 WAS 2.1



UTAH INDEX CRIME BY CONTRIBUTOR

1980 PART I - OFFENSES BY AGENCY

AGENCY	NO. OF MONTHS CONTRIBUTED	POPULATION	MURDER	RAPE	ROBBERY	ASSAULT	BURGLARY	LARCENY THEFT	MOTOR VEHICLE THEFT	ARSON	TOTAL CRIME INDEX
BEAVER COUNTY Sheriff	12	4,378	1		3	2	11	28	6		51
TOTAL		4,378	1		3	2	11	28	6		51
BOX ELDER COUNTY Sheriff	12	14,162		2	2	9	55	159	7	1	235
Brigham City	12	15,596		2	5	13	80	666	24		790
Tremonton	12	3,464				9	29	75	3	2	118
TOTAL		33,222		4	7	31	164	900	34	3	1,143
CACHE COUNTY Sheriff	12	20,675		3	2	5	66	168	13	1	258
Hyde Park	12	1,495				5	6	9			20
Hyrum	12	3,952				3	37	18	1		59
Logan	12	26,844			2	45	100	600	28		775
North Logan	12	2,258					9	7			16
Wellsville	12	1,952					6	27	1		34
TOTAL		57,176		3	4	58	224	829	43	1	1,162
CARBON COUNTY Sheriff	12	8,427		4	2	51	131	160	26	1	375
East Carbon City	12	1,942	1	1		17	38	43	2	3	105
Helper	12	2,724		1		3	15	28	3		50
Price	12	9,086	1	1	1	2	91	283	21		400
TOTAL		22,179	2	7	3	73	275	514	52	4	930
DAVIS COUNTY Sheriff	12	21,669		3	2	37	132	256	26	2	458
Bountiful	12	32,877			10	61	259	804	34	1	1,171
Centerville	12	8,069		1	5	6	77	154	3		246
Clearfield	12	17,982			8	46	81	438	30	5	608
Clinton	12	5,777	1	1		11	19	75	5		112
Farmington	12	4,691		1	1	1	43	130	4		180
Kaysville	12	9,811				8	39	230	10	2	289
Layton	11	22,862		6	4	24	175	709	49		967
North Salt Lake	12	5,548		1	7	12	58	187	12		277
Sunset	12	5,733		1		5	39	161	13		219
Syracuse	12	3,702				3	11	58	6		78
West Bountiful	12	3,556		1		5	7	74	4		91
Woods Cross	12	4,263	1	2	3	8	48	173	9	1	245
TOTAL		146,540	2	17	40	227	988	3,449	205	11	4,939

AGENCY	NO. OF MONTHS CONTRIBUTED	POPULATION	MURDER	RAPE	ROBBERY	ASSAULT	BURGLARY	LARCENY THEFT	MOTOR VEHICLE THEFT	ARSON	TOTAL CRIME INDEX
DAGGETT COUNTY Sheriff	12	769				2	17	35			54
TOTAL		769				2	17	35			54
DUCHESNE COUNTY Sheriff	12	7,046		2		5	10	52			69
Duchesne City	12	1,677				2	2	33			37
Roosevelt	12	3,842		5	2	14	43	207	14	3	288
TOTAL		12,565		7	2	21	55	292	14	3	394
EMERY COUNTY Sheriff	12	11,451			1	38	90	296	19		444
TOTAL		11,451			1	38	90	296	19		444
GARFIELD COUNTY Sheriff	11	2,330				12	17	57	4	2	92
Panguitch	12	1,343		1		3	8	44	5		61
TOTAL		3,673		1		15	25	101	9	2	153
GRAND COUNTY Sheriff	12	2,908	2	1	2	2	22	51	7	1	88
Moab	12	5,333		1		26	76	165	21		289
TOTAL		8,241	2	2	2	28	98	216	28	1	377
IRON COUNTY Sheriff	12	4,541			2		31	121	5	1	160
Cedar City	12	10,972	1	3	1	16	75	336	24		456
Parowan	12	1,836					6	22			28
TOTAL		17,349	1	3	3	16	112	479	29	1	644
JUAB COUNTY Sheriff	12	2,245				4	14	32			50
Nephi	12	3,285				4	30	60	1		95
TOTAL		5,530				8	44	92	1		145
KANE COUNTY Sheriff	12	4,024		1	1		13	49	6		70
Kanab ** TOTAL		4,024		1	1		13	49	6		70
MILLARD COUNTY Sheriff	12	7,040		1	1	3	38	120	7	2	172
Delta	12	1,930				3	12	35	3		53
TOTAL		8,970		1	1	6	50	155	10	2	225
MORGAN COUNTY Sheriff	12	4,917				1	14	29	6	1	51
TOTAL		4,917				1	14	29	6	1	51

**INDICATES AGENCY REPORTS COVERED BY SHERIFF'S OFFICE

AGENCY	NO. OF MONTHS CONTRIBUTED	POPULATION	MURDER	RAPE	ROBBERY	ASSAULT	BURGLARY	LARCENY THEFT	MOTOR VEHICLE THEFT	ARSON	TOTAL CRIME INDEX
PIUTE COUNTY Sheriff	12	1,329				1	14	19	1		35
TOTAL		1,329				1	14	19	1		35
RICH COUNTY Sheriff	12	2,100				1	14	32	4	2	53
TOTAL		2,100				1	14	32	4	2	53
SALT LAKE COUNTY Sheriff	12	250,673	11	67	247	592	4,719	11,748	920	67	18,371
Draper	12	5,530		1	4	7	32	70	4	1	119
Midvale	12	10,144			17	53	245	756	69	6	1,146
Murray	12	25,750		6	34	36	485	2,025	154	90	2,830
Salt Lake City	12	163,033	16	140	528	448	5,174	11,437	1,343	71	19,157
Sandy	12	51,022	1	10	19	125	620	1,689	110	13	2,587
South Jordan	12	7,492		2	1		66	84	6		159
South Salt Lake	12	10,561	2	14	42	23	515	1,273	175	3	2,047
West Jordan	12	26,794		3	9	52	223	1,060	64		1,411
West Valley	6	68,067	2	12	23	144	655	1,600	105	12	2,553
Riverton **											
TOTAL		619,066	32	255	924	1,480	12,734	31,742	2,950	263	50,380
SAN JUAN COUNTY Sheriff	12	10,324		2	1	23	36	148	8		218
Monticello	12	1,929		1				6			7
TOTAL		12,253		3	1	23	36	154	8		225
SANPETE COUNTY Sheriff	12	6,426			1	1	32	53	4		91
Ephraim	12	2,810				2	4	34	2		42
Gunnison	12	1,255					11	39			50
Manti	12	2,080				7	12	5	2		26
Mt. Pleasant	12	2,049			1		8	20	2		31
TOTAL		14,620			2	10	67	151	10		240
SEVIER COUNTY Sheriff	12	7,253	2	1	1	1	42	123	5	3	178
Richfield	12	5,482			1	19	50	209	17	3	299
Salina	12	1,992		1	1	5	21	101	8		137
TOTAL		14,727	2	2	3	25	113	433	30	6	614
SUMMIT COUNTY Sheriff	12	7,375				6	48	100	9		163
Park City	12	2,823				1	55	209	21	1	287
TOTAL		10,198				7	103	309	30	1	450

AGENCY	NO. OF MONTHS CONTRIBUTED	POPULATION	MURDER	RAPE	ROBBERY	ASSAULT	BURGLARY	LARCENY THEFT	MOTOR VEHICLE THEFT	ARSON	TOTAL CRIME INDEX
TOOELE COUNTY Sheriff	12	7,279	1	7	5	10	35	101	11		170
Tooele	12	14,335	1	3	1	9	101	408	22	2	547
Grantsville	12	4,419		1		2	17	72	6		98
TOTAL		26,033	2	11	6	21	153	581	39	2	815
UINTAH COUNTY Sheriff	12	13,906	1	1	1	18	66	163	24	9	283
Vernal	12	6,600	1	1		54	118	455	43	2	674
TOTAL		20,506	2	2	1	72	184	618	67	11	957
UTAH COUNTY Sheriff	12	21,290		5	3	24	127	347	32	1	539
Alpine	12	2,649					17	36			53
American Fork	12	12,417		1	2	2	105	336	22		468
Lehi	12	6,848			3	1	37	87	19	1	148
Lindon	4	2,796					2	31	3		36
Mapleton	12	2,726				3	10	26	4		43
Orem	12	52,399		6	8	35	270	1,813	69	3	2,204
Payson	12	8,246		1	1	16	34	189	16		257
Pleasant Grove	12	10,669		2		5	92	344	24		467
Provo	12	73,907		2	17	64	438	1,960	159	22	2,662
Salem	12	2,233				4	4	12	3		23
Spanish Fork	12	9,825				5	27	201	18		251
Springville	12	12,101		1	1	5	90	417	22	1	537
TOTAL		218,106		18	35	164	1,253	5,799	391	28	7,688
WASATCH COUNTY Sheriff	12	4,161				5	45	48	9	3	110
Heber City	12	4,362			1	2	29	112	13		157
TOTAL		8,523			1	7	74	160	22	3	267
WASHINGTON COUNTY Sheriff	12	12,354	2	2	2	18	29	75	8		136
Hurricane	12	2,361					24	43	6		73
St. George	12	11,350		1	4	8	45	358	22		438
TOTAL		26,065	2	3	6	26	98	476	36		647
WAYNE COUNTY Sheriff	12	1,911					4	5		2	11
TOTAL		1,911					4	5		2	11

AGENCY	NO. OF MONTHS CONTRIBUTED	POPULATION	MURDER	RAPE	ROBBERY	ASSAULT	BURGLARY	LARCENY THEFT	MOTOR VEHICLE THEFT	ARSON	TOTAL CRIME INDEX
WEBER COUNTY											
Sheriff	12	20,054		6		13	164	506	34	1	724
Harrisville	12	1,371			1	2	7	32			42
North Ogden	12	9,309				2	32	110	6	1	151
Ogden	12	64,407	6	50	111	273	1,454	4,808	470	68	7,240
Plain City	12	2,379									0
Pleasant View	12	3,983				7	28	64	7		106
Riverdale	12	3,841				24	77	294	16		411
Roy	12	19,694	1	2	4	85	193	699	46	3	1,033
South Ogden	12	11,366		3	5	13	76	515	24		636
Washington Terrace	12	8,212		1		4	46	299	14	1	365
TOTAL		144,616	7	62	121	423	2,077	7,327	617	74	10,708
COLLEGES AND UNIVERSITIES											
BYU	12						37	767	8	5	817
UTC (Orem)	12						3	45	1	1	50
U of U	12			2	1	8	92	682	23	3	811
UTC (Salt Lake)	12						10	98	6		114
Weber State	12			3		2	8	232	5		250
TOTAL				5	1	10	150	1,824	43	9	2,042
Capitol Police	12					1	1	28		1	31

CRIME RATES FOR INDEX OFFENSES

The Uniform Crime Reporting Program provides data for police executives to measure local problems. To facilitate this function, the local data must be converted to terms of rates and percentages.

CRIME RATES

One of the most meaningful crime statistics is the crime rate. This rate is the number of Part I offenses per 1,000 inhabitants. This rate can be calculated regardless of the number of inhabitants in any city, town, or county.

In computing crime rates by county, population estimates for individual counties were prepared using current census reports.

During 1980, some law enforcement agencies did submit fewer than the solicited 12 months of offense reports. Therefore, offense counts were estimated for agencies within the county which failed to submit complete records for the year. University and College crime offense counts were added to the respective county totals.

No attempt has been made to incorporate either transient population or other factors which contribute to the ratio and type of crime in a given area. Any effort to make comparisons of crime rates between one area and another should recognize these population changes and varying environmental factors.

CRIME RATES PER COUNTY

COUNTY	1979 PART I OFFENSES	1979 CRIME RATE PER 1,000 POP.	1980 POPULATION	1980 PART I OFFENSES	1980 CRIME RATE PER 1,000 POP.
BEAVER	33	7.50	4,378	51	11.65
BOX ELDER	1,050	31.82	33,222	1,143	34.41
CACHE	1,137	20.67	57,176	1,162	20.32
CARBON	906	41.18	22,179	930	41.93
DAGGETT	64	80.00	769	54	70.22
DAVIS	5,157	37.64	146,540	4,941	33.72
DUCHESNE	466	39.16	12,565	394	31.36
EMERY	283	26.20	11,451	444	38.77
GARFIELD	69	18.16	3,673	153	41.66
GRAND	405	51.27	8,241	377	45.75
IRON	655	38.08	17,349	644	37.12
JUAB	159	27.90	5,530	145	26.22
KANE	74	18.97	4,024	70	17.40
MILLARD	127	14.11	8,970	225	25.08
MORGAN	39	7.36	4,917	51	10.37
PIUTE	32	21.33	1,329	35	26.34
RICH	96	50.53	2,100	53	25.24
SALT LAKE	47,890	85.06	619,066	51,336	82.92
SAN JUAN	136	9.06	12,253	225	18.36
SANPETE	196	13.24	14,620	240	16.42
SEVIER	437	29.13	14,727	614	41.69
SUMMIT	421	48.39	10,198	450	44.13
TOOELE	766	30.89	26,033	815	31.31
UINTAH	608	31.50	20,506	957	46.67
UTAH	8,042	40.41	218,106	8,555	39.22
WASATCH	211	27.05	8,523	267	31.33
WASHINGTON	694	30.17	26,065	647	24.82
WAYNE	12	6.32	1,911	11	5.76
WEBER	10,495	72.88	144,616	10,958	75.77
TOTAL	80,660	59.00	1,461,037	85,947	58.83

*NOTE: Assault DOES NOT include simple assault
Ref. page 14.



1980 ARRESTS
Arrests for Liquor Violations

	1978	1979	1980
ADULT	14.682	16.979	19.732
JUVENILE	2.484	3.679	3.358
TOTAL LIQUOR ARRESTS	17.166	20.658	23.090

Arrests for Drug Abuse

Possession	1978	1979	1980
ADULT	1.671	2.071	2.462
JUVENILE	1.100	1.329	1.399
Sale & Manufacturing			
ADULT	461	687	733
JUVENILE	99	206	143
TOTAL DRUG ARRESTS	3.331	4.293	4.737

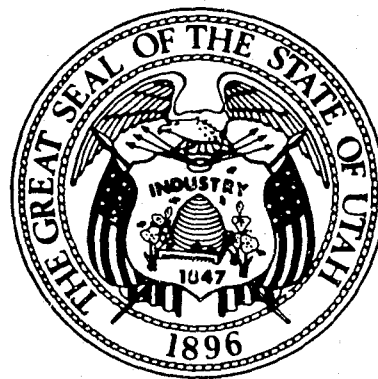
1980 TOTAL ARRESTS
PART I & PART II CRIMES

	1978	1979	1980
ADULT ARRESTS	34.406	40.310	45.317
JUVENILE ARRESTS	20.995	25.521	25.189
TOTAL STATE ARRESTS	55.401	65.831	70.536

AGENCY ARREST TOTAL 1980					
AGENCY	TOTAL ALL ARRESTS		AGENCY	TOTAL ALL ARRESTS	
	Juv.	Adult		Juv.	Adult
Beaver County S.O.	3	156	Sunset	185	125
Box Elder County	23	192	Syracuse	33	12
Brigham City	318	222	West Bountiful	26	54
Tremonton	29	75	Woods Cross	100	81
Cache County S.O.	105	753	Duchesne County	8	43
Hyde Park	5	4	Duchesne City	20	52
Hyrum	38	94	Roosevelt	178	693
Logan	372	740	Emery County S.O.	97	341
N. Logan	14	23	Garfield County S.O. (11 months)	6	59
Wellsville	28	2	Panguitch	35	52
Carbon County S.O.	210	472	Grand County S.O.	30	122
East Carbon	18	67	Moab	829	230
Helper	12	54	Iron County S.O.	29	264
Price	132	236	Cedar City	148	591
Daggett County S.O.	10	45	Parowan	8	30
Davis County S.O.	181	361	Juab County S.O.	19	135
Bountiful	695	499	Nephi	62	153
Centerville	207	395	Kane County S.O.	17	136
Clearfield	455	531	Millard County S.O.	60	168
Clinton	139	19	Delta	67	36
Farmington	32	74	Morgan County S.O.	35	91
Kaysville	236	114	Piute County S.O.	3	8
Layton (11 months)	438	594	Rich County S.O.	16	60
North Salt Lake	32	121	Salt Lake County	6,168	5,160

AGENCY	TOTAL ALL ARRESTS		AGENCY	TOTAL ALL ARRESTS	
	Juv.	Adult		Juv.	Adult
Draper	20	42	Mapleton	21	6
Midvale	241	759	Orem	793	890
Murray	428	1,197	Payson	155	296
Salt Lake City	2,317	9,758	Pleasant Grove	213	224
Sandy	894	632	Provo	1,294	2,423
South Jordan	54	28	Salem	11	29
South Salt Lake	226	644	Spanish Fork	71	58
West Jordan	650	375	Springville	132	199
West Valley (6 months)	514	864	Wasatch County S.O.	156	95
San Juan County S.O.	90	659	Heber City		288
Monticello	8	188	Washington Co. S.O.	37	43
Sanpete County S.O.		15	Hurricane	18	22
Ephraim	3	4	St. George	151	496
Gunnison	31	71	Wayne County (8 mths)	11	11
Manti	13	17	Weber County S.O.	256	420
Mt. Pleasant	31	27	Harrisville	2	102
Sevier County S.O.	40	179	North Ogden	189	43
Richfield	100	161	Ogden	1,637	3,376
Salina	60	68	Plain City	0	0
Summit County S.O.	15	108	Pleasant View	99	38
Park City	12	126	Riverdale	158	180
Tooele County S.O.	6	201	Roy	357	294
Grantsville	29	32	South Ogden	307	303
Tooele City	258	287	Washington Terrace	211	81
Uintah County S.O.	103	199	Colleges & Universities		
Vernal	161	465	U of U	22	228
Utah County S.O.	152	587	BYU	107	305
Alpine	26	9	Trade Tech / Orem	1	1
American Fork	177	200	Trade Tech / Salt Lake City	1	2
Lehi	26	76	Weber State	23	50
Lindon (4 months)	7	8	STATE AGENCIES:		
			UHP	151	2,419
			CAPITOL POLICE	2	

CRIME IN UTAH



1980

END