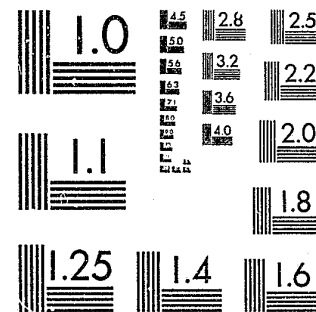


National Criminal Justice Reference Service

**ncjrs**

This microfiche was produced from documents received for inclusion in the NCJRS data base. Since NCJRS cannot exercise control over the physical condition of the documents submitted, the individual frame quality will vary. The resolution chart on this frame may be used to evaluate the document quality.



MICROCOPY RESOLUTION TEST CHART  
NATIONAL BUREAU OF STANDARDS-1963-A

Microfilming procedures used to create this fiche comply with the standards set forth in 41CFR 101-11.504.

Points of view or opinions stated in this document are those of the author(s) and do not represent the official position or policies of the U. S. Department of Justice.

National Institute of Justice  
United States Department of Justice  
Washington, D. C. 20531

9/26/83

CR-Sent  
8-4-83

# TRENDS OF THE FELON POPULATION:

Adults Committed To  
Correctional Facilities

FY 1974-75 To FY 1981-82

STATE  
INTAKE  
SERVICE  
CENTERS

A CRIMINAL JUSTICE AGENCY



JANUARY 1983  
REPORT NO. 83-001

89094

89094

GEORGE R. ARIYOSHI  
GOVERNOR



KENDRICK WONG  
EXECUTIVE DIRECTOR

STATE OF HAWAII  
STATE INTAKE SERVICE CENTER  
2199 KAMEHAMEHA HWY.  
HONOLULU, HAWAII 96819  
PHONE (808) 848-2544

No. 1778/1888/  
1971

March 28, 1983

National Institute of  
Justice/NCJRS  
Acquisition Report Dept.  
Rockville, MD 20850

Dear Sir:

As requested on three separate occasions, attached are the following reports:

1. Trends of the Felon Population: Adults Committed to Correctional Facilities, FY 1974-75 to FY 1981-82, Report No. 83-001;
2. Review of Incarcerated Population, Report No. 82-002;
3. Alternative Proposals to Alleviate Overcrowding in Hawaii's Correctional Facilities, Report No. 82-003.

The release forms (NIC Form 6060/1) are also enclosed.

If you have any question, please feel to call or write to Conroy Chow at (808) 848-2560.

Sincerely,

Kendrick Wong  
Executive Director

Attachments  
[Doc 2703z]

U.S. Department of Justice  
National Institute of Justice

89094

This document has been reproduced exactly as received from the person or organization originating it. Points of view or opinions stated in this document are those of the authors and do not necessarily represent the official position or policies of the National Institute of Justice.

Permission to reproduce this copyrighted material has been granted by  
State Intaker Services Center  
Hawaii

to the National Criminal Justice Reference Service (NCJRS).

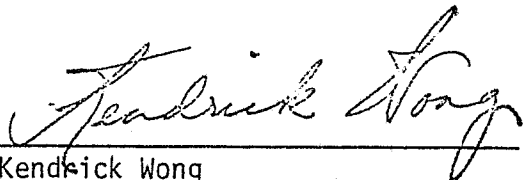
Further reproduction outside of the NCJRS system requires permission of the copyright owner.

Foreword

The research staff of the Office of Correctional Information and Statistics of the State Intake Service Centers has put together statistics showing current trends of the felon population.

This year's report compares data from the initial reporting years (FY 1974-75 and FY 1975-76) with that of the most recent period (FY 1981-82). For certain tables, recent changes in the definitions of life with or without parole has created a problem when comparing the recent fiscal year with prior years. Previously, these sentences were arbitrarily set at 88 years 88 months for life with parole and 99 years 99 months for life without parole.

A more realistic definition of a life with parole sentence has been worked out based on age at admission and life expectancy of 74 years.

  
Kendrick Wong  
Executive Director

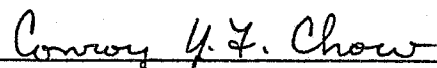
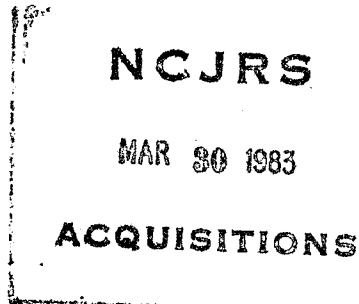
  
Conroy Chow  
OCIS Administrator

TABLE OF CONTENTS

	Page Number
Foreword	i
I. Introduction	1
II. Summary Highlights	2
III. General Population	4
A. Admissions and Releases	4
B. Time Served	9
C. Average Sentence	11
IV. Demographic Statistics	17
A. Age At Commitment	17
B. Current Age	18
C. Ethnic Background	19
D. County of Conviction	20
E. Length of Residence	21
F. Prior Felony Commitments	22
G. Drug and Alcohol Use	23
H. Crime Types	24
V. Conclusion	25
Appendix I - Statistical Tables	I-1
Appendix II - Offense Listing	II-1



# LIST OF TABLES

<u>Table</u>	<u>Title</u>	<u>Page</u>
1	Admissions By Summary Offense, FY 1975-76 and FY 1981-82	7
2	Releases By Summary Offense, FY 1975-76 and FY 1981-82	7
3	Admissions By Sentence Type, FY 1975-76 and FY 1981-82	8
4	Releases By Sentence Type, FY 1975-76 and FY 1981-82	9
5	Releases By Average Time Served By Offense Class, FY 1975-76 and FY 1981-82	11
6	Average Minimum Sentences For Admitted Felons By Offense Class, FY 1975-76 and FY 1981-82	15
7	Average Maximum Sentence For Admitted Felons By Offense Class, FY 1975-76 and FY 1981-82	15
8	Average Minimum Sentences For Felons Released By Offense Class, FY 1975-76 and FY 1981-82	16
9	Average Maximum Sentences For Felons Released By Offense Class, FY 1975-76 and FY 1981-82	16
10	Age At Commitment For Felons, June 30, 1975 and June 30, 1982	17
11	Current Age of Committed Felons, June 30, 1975 and June 30, 1982	18
12	Ethnic Background of Felons, June 30, 1975 and June 30, 1982	19
13	County of Conviction For Felon Population, June 30, 1975 and June 30, 1982	20
14	Length of Residence For Felons, June 30, 1975 and June 30, 1982	21
15	Prior Felony Commitments of Felons, June 30, 1975 and June 30, 1982	22
16	Drug Use By Felons, June 30, 1975 and June 30, 1982	23
17	Alcohol Use By Felons, June 30, 1975 and June 30, 1982	23
18	Crime Types Committed By Felons, June 30, 1975 and June 30, 1982	24

# LIST OF TABLES

<u>Table</u>	<u>Title</u>	<u>Page</u>
(Appendix I)		
A	Admissions By Summary Offense, FY 1975-76 to FY 1981-82	I-2
B	Releases By Summary Offense, FY 1975-76 to FY 1981-82	I-2
C	Admissions By Sentence Type, FY 1975-76 to FY 1981-82	I-3
D	Releases By Sentence Type, FY 1975-76 to FY 1981-82	I-3
E	Releases By Average Time Served By Offense Class, FY 1975-76 to FY 1981-82	I-4
F	Average Minimum Sentences For Admitted Felons By Offense Class, FY 1975-76 to FY 1981-82	I-4
G	Average Maximum Sentences For Admitted Felons By Offense Class, FY 1975-76 to FY 1981-82	I-5
H	Average Minimum Sentences For Felons Released By Offense Class, FY 1975-76 to FY 1981-82	I-6
I	Average Maximum Sentences For Felons Released By Offense Class, FY 1975-76 to FY 1981-82	I-6
J	Age At Commitment For Felons, June 30, 1975 to June 30, 1982	I-7
K	Current Age of Committed Felons, June 30, 1975 to June 30, 1982	I-7
L	Ethnic Background of Felons, June 30, 1975 to June 30, 1982	I-8
M	County of Conviction For Felon Population, June 30, 1975 to June 30, 1982	I-9
N	Length of Residence For Felons, June 30, 1975 to June 30, 1982	I-9
O	Prior Felony Commitments of Felons, June 30, 1975 to June 30, 1982	I-10
P	Drug Use By Felons, June 30, 1975 to June 30, 1982	I-11
Q	Alcohol Use By Felons, June 30, 1975 to June 30, 1982	I-11
R	Crime Types Committed By Felons, June 30, 1975 to June 30, 1982	I-12

# LIST OF FIGURES

<u>Figure</u>	<u>Title</u>	<u>Page</u>
1	Felon Population	5
2	Felon Admissions and Releases	6
3	Average Time Served For Released Felons	10
4	Average Sentences of Felon Population	12
5	Average Minimum and Maximum Sentences For Admissions	13
6	Average Miminum and Maximum Sentences For Releases	14

## TRENDS OF THE FELON POPULATION: ADULTS COMMITTED CORRECTIONAL FACILITIES FY 1975-76 to FY 1981-82

This report describes the trends of the felon population in the State of Hawaii and the method in which the criminal justice system deals with this population. It compares the statistics of the initial data-reporting period of FY 1975-76 with that of FY 1981-82. Graphs and statistics for the years between this period are also provided.

Unfortunately, some statistics are affected by missing data, but the continued presentation of these within future reports will hopefully motivate the individuals responsible to improve their data reporting.

### DATA SOURCE

The data for this report was drawn exclusively from the Felony Offender Computerized Update System (FOCUS) which contains detailed information on sentenced felons in corrections since January 31, 1975. Not included in FOCUS is the "jail-type" population of felon probationers, sentenced misdemeanants, and not-sentenced individuals.

Five (5) basic types of information were collected from the Corrections Division and the Hawaii Paroling Authority (HPA) for FOCUS: Admission data, Incarceration Program data, Furlough Release data, Parole Release data, and HPA mandatory consideration data. The data used for this particular report include those related to identification, medical history, and offense information.

As a last word of caution, the data presented in this report covers only those felons under the jurisdiction of the State's correctional facilities. These range from felons with community release status to long-term felons. Also included are felons in hospitals and mainland facilities. Parolees are not included.<sup>1</sup>

---

<sup>1</sup>It was erroneously stated in the last report that these individuals were included.

# SUMMARY HIGHLIGHTS

- o The number of felons continued to increase, averaging a growth rate of 15 percent per year since FY 1974-75 (Figure 1).
- o The number of felon admissions increased by 80 percent between FY 1975-76 and FY 1978-79 prior to stabilizing between FY 1978-79 and FY 1980-81 (average growth rate of 4 percent). In FY 1981-82, the growth rate accelerated again with a 22 percent increase over the previous year (Figure 2).
- o The average time served for released felons slowly rose from an average of 30.2 months in FY 1975-76 to 52.2 months in FY 1981-82; the greatest increase being for felons committed for personal crimes (from 37.7 to 63.5 months) (Figure 3).
- o The average maximum sentence for admissions (excluding life with and without parole sentences) gradually increased by 48 percent since FY 1975-76 from 76.4 to 113.3 months. Whereas, the average maximum sentence for releases fluctuated with a period of decline between FY 1975-76 to FY 1978-79 from 126.3 to 89.2 months, and a period of increase between FY 1978-79 and FY 1981-82 from 89.2 to 131.6 months (Figures 5 and 6).
- o The average minimum sentence for admissions decreased since FY 1979-80 from 69.4 to 38.8 months. Prior to FY 1979-80, however, the average minimum increased 58 percent over FY 1975-76 from 43.8 to 69.4 months.

In contrast, the average minimum sentence for releases steadily increased 87 percent between FY 1975-76 and FY 1981-82 from 31.5 to 58.8 months (Figures 5 and 6).

- o The gap between average minimum and maximum sentences (excluding life with parole sentences) for admissions widened since FY 1977-78 with an average difference of 39.3 months during the period FY 1975-76 to FY 1979-80 as compared with a difference of 76.2 months for fiscal years 1980-81 and 1981-82.

In contrast, the gap between average minimums and maximums for releases decreased from an average difference of 84.1 months for the three years prior to FY 1978-79 to 67.3 months for the years after FY 1978-79 (Figures 5 and 6).

- o The current age of committed felons was slightly higher as of June 30, 1982 when compared with that of June 30, 1975. As of June 30, 1982, the current median age was 28.7 years, whereas on June 30, 1975, it was 27.1 years.

- o As for age at commitment, the median age as of June 30, 1982 was 24.2 years, somewhat lower than the 25.4 years as of June 30, 1975 (Tables 10 and 11).
- o As of June 30, 1982, 96 percent of the committed felons claimed a residency of over 20 years. As of June 30, 1975 however, only 85 percent made such a claim (Table 14).

### General Population Trends

As seen in Figure 1, the statewide felon population in FY 1981-82 nearly tripled since FY 1974-75.<sup>2</sup> After experiencing a steady rise from FY 1974-75 to FY 1977-78, the growth rate increased to over 20 percent for the following two years before decreasing to 12 percent in FY 1980-81. In FY 1981-82 however, the growth rate increased again to 22 percent. The growth is attributed to the increase of admissions over releases and longer sentences, both of which will be covered in the report.

In FY 1974-75, the average number of felons represented approximately 68 percent of the average total statewide inmate population. However, despite the nearly tripling of felon population between FY 1974-75 and FY 1981-82, the percentage of felons dropped to 63 percent in FY 1981-82 due to a relatively large increase in the number of sentenced misdemeanants (10 percent) and not-sentenced individuals (27 percent).

### Admissions and Releases

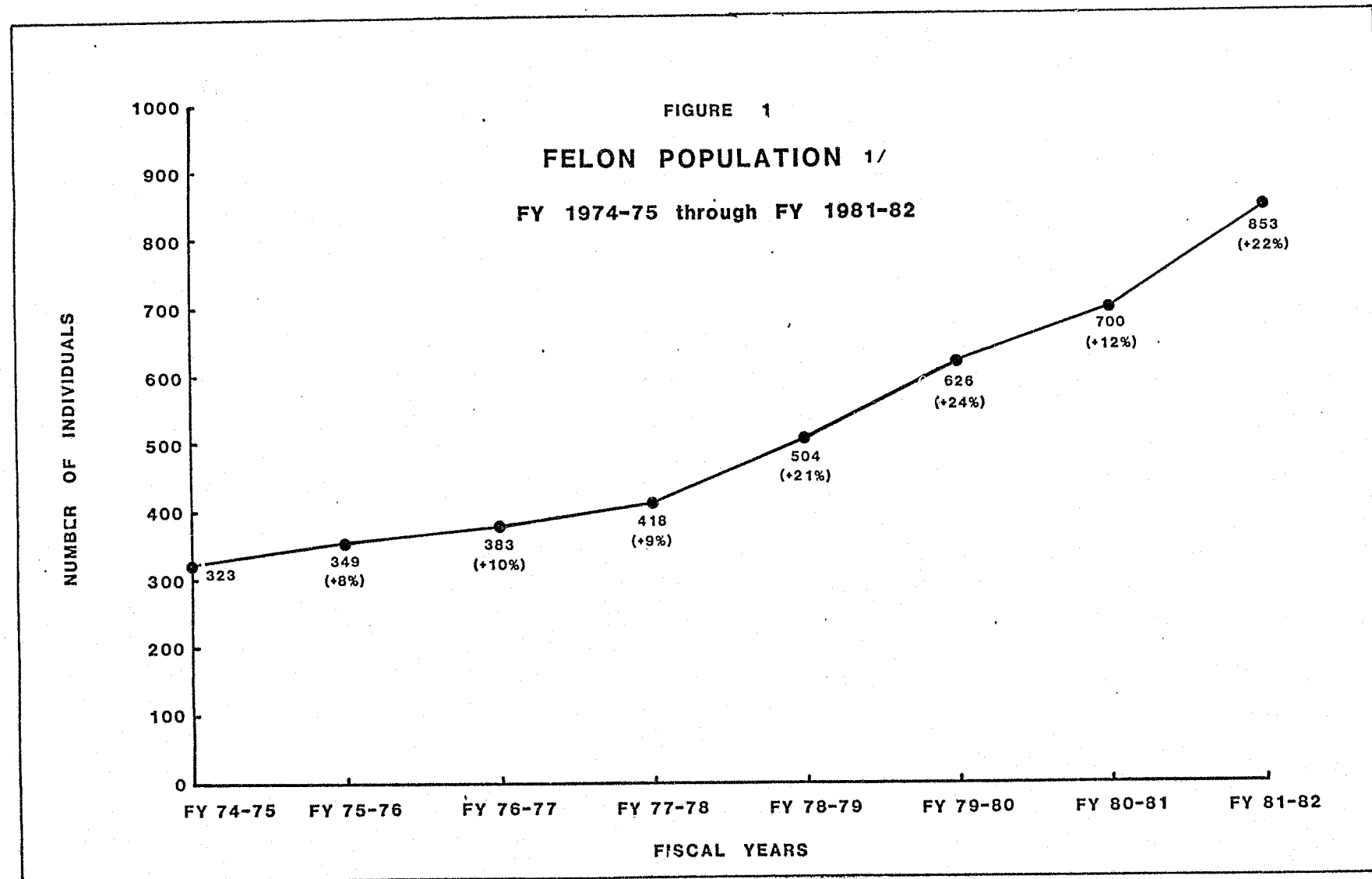
Part of the felon population growth during the study period was attributed to the increasing number of admissions over releases. Figure 2 shows a widening gap between admissions and releases from FY 1975-76 to FY 1979-80, prior to decreasing during FY 1980-81, and widening again in FY 1981-82.

Looking at Table 1, a larger number of felons admitted in FY 1981-82 were incarcerated for personal crimes when compared with FY 1975-76.<sup>3</sup> In contrast, Table 2 shows that the number of felons released after being incarcerated for personal crimes decreased between the same time periods.

---

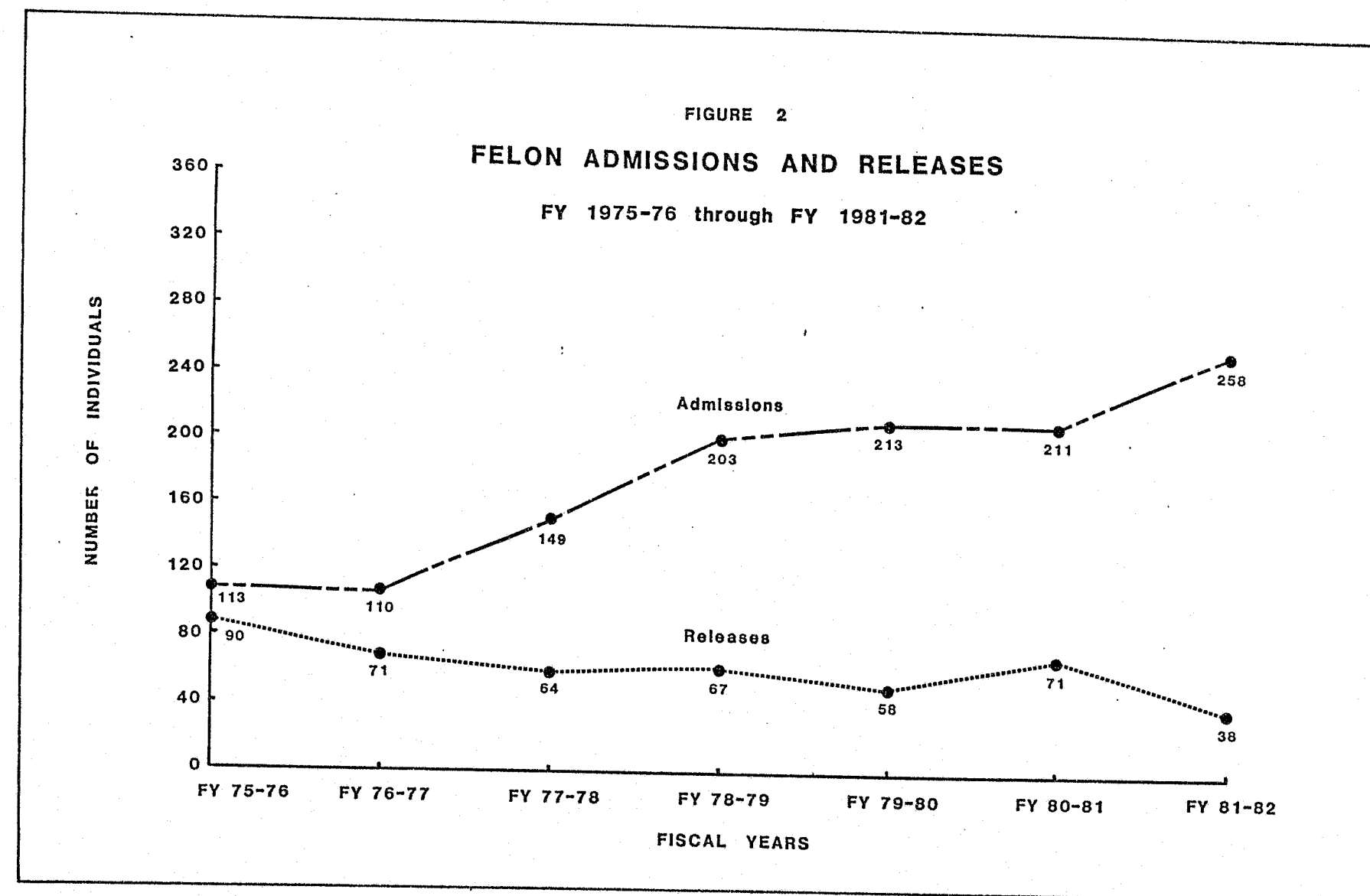
<sup>2</sup>Unlike most of the data, population counts began in FY 1974-75, rather than FY 1975-76.

<sup>3</sup>Appendix II lists the various offenses that make up each offense type.



1/ Assign count population at fiscal year end dates.





The two tables appear to indicate that felons convicted of personal crimes are being incarcerated at a greater rate and are being detained longer. However, there are other factors which have to be taken into consideration as the report will later show.

TABLE 1

ADMISSIONS BY SUMMARY OFFENSE  
FY 1975-76 and FY 1981-82

OFFENSE TYPE	FY 1975-76	FY 1981-82	RATE OF CHANGE FY 1981-82 OVER FY 1975-76
Personal Crimes	33 (29%)	125 (48%)	+279%
Property Crimes	40 (35%)	78 (30%)	+ 95%
Other Crimes <sup>1</sup>	20 (18%)	32 (12%)	+ 60%
Technical Violations <sup>2</sup>	16 (14%)	13 ( 5%)	- 19%
Drug Related Crimes	4 ( 4%)	10 ( 4%)	+150%
Total Admissions	113	258	+128%

<sup>1</sup>Other crimes include gun offenses, gambling, contempt of court, escape, and other public order and public administration offenses.

<sup>2</sup>Technical Violations are parole violations.

TABLE 2

RELEASES BY SUMMARY OFFENSE  
FY 1975-76 and FY 1981-82

OFFENSE TYPE	FY 1975-76	FY 1981-82	RATE OF CHANGE FY 1981-82 OVER FY 1975-76
PERSONAL CRIMES	35 (39%)	18 (47%)	- 49%
PROPERTY CRIMES	30 (33%)	12 (32%)	- 60%
OTHER CRIMES	11 (12%)	4 (11%)	- 64%
TECHNICAL VIOLATIONS	12 (13%)	2 ( 5%)	- 83%
DRUG RELATED CRIMES	2 ( 2%)	2 ( 5%)	+ 0%
TOTAL ADMISSIONS	90	38	- 58%

Another interesting fact related to admissions and releases comes into view when sentence types are compared. Table 3 shows admissions by sentence type. Note that in FY 1981-82, 91 percent of all admitted felons received other or regular (indeterminate) sentences as opposed to 58 percent in FY 1975-76. Also note that those admitted for life with parole sentences numbered 12 in FY 1981-82, whereas only one (1) individual received such a sentence in FY 1975-76. Conversely, the number of individuals convicted under the Youthful Offender Act dropped from thirty (30) in FY 1975-76 to 8 in FY 1981-82.

TABLE 3

ADMISSIONS BY SENTENCE TYPE  
FY 1975-76 and FY 1981-82

OFFENSE TYPE	FY 1975-76	FY 1981-82	RATE OF CHANGE FY 1981-82 OVER FY 1975-76
OTHER	66 (58%)	236 (91%)	+ 258%
YOUTHFUL OFFENDER	30 (27%)	8 ( 3%)	- 73%
PVT ONLY <sup>1</sup>	16 (14%)	0 ( 0%)	NA
LIFE WITH PAROLE	1 ( 1%)	12 ( 5%)	+1100%
LIFE WITHOUT PAROLE	0 ( 0%)	2 ( 1%)	NA
TOTAL ADMISSIONS	113	258	+ 128%

<sup>1</sup>PVT = Parole Violators and parolees serving misdemeanor sentences.

The trend for releases differs from that for admissions. Table 4 shows that the percentage of felons released under "Other" sentences was exactly the same in FY 1981-82 and FY 1975-76 but the percentage of youthful offenders released increased from 4 percent in FY 1975-76 to 18 percent in 1981-82. Also, no individuals under parole and technical violations were released in FY 1981-82 as compared with the 12 released in FY 1975-76. This was probably due to the decrease of parole violation admissions during the study period (See Table in the Appendix).

TABLE 4  
RELEASES BY SENTENCE TYPE  
FY 1975-76 and FY 1981-82

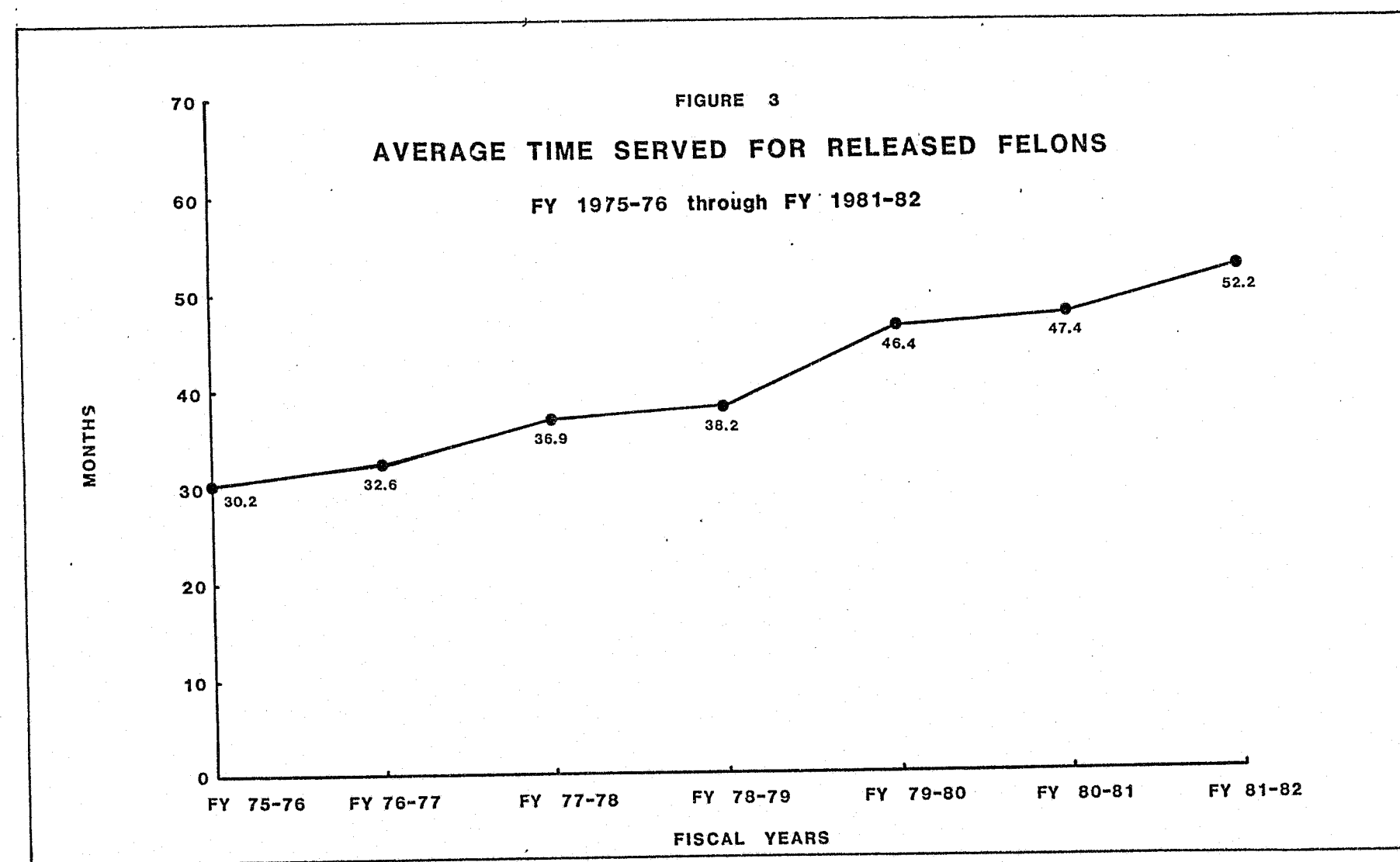
OFFENSE TYPE	FY 1975-76	FY 1981-82	RATE OF CHANGE FY 1981-82 OVER FY 1975-76
OTHER	74 (82%)	31 (82%)	- 58%
YOUTHFUL OFFENDER	4 ( 4%)	7 (18%)	+ 75%
PVT ONLY	12 (13%)	0 ( 0%)	NA
LIFE WITH PAROLE	0 ( 0%)	0 ( 0%)	NA
LIFE WITHOUT PAROLE	0 ( 0%)	0 ( 0%)	NA
TOTAL ADMISSIONS	90	38	- 58%

The trend of the felon population receiving more indeterminate and life sentences appear to reflect the harsher conviction terms associated with felons convicted of personal crimes. This will become more apparent later in the report.

(See Tables C & D in Appendix I to note trends relating to sentence types between FY 1975-76 and FY 1981-82.)

#### Time Served

Figure 3 shows that the average time served for felons increased from 30.2 months in FY 1975-76 to 52.2 months in FY 1981-82, a growth of 73 percent. The most significant increases are associated with those committed for personal and property related crimes (+68 and +66 percent, respectively). Keep in mind that although individuals committed for technical violations experienced the largest net increase in average time served, their numbers were too small to be significant.



Includes life with parole sentences.

TABLE 5  
RELEASES BY AVERAGE TIME SERVED  
BY OFFENSE CLASS  
FY 1975-76 and FY 1981-82

OFFENSE TYPE	FY 1975-76	FY 1981-82	RATE OF CHANGE FY 1981-82 OVER FY 1975-76
	MONTHS	MONTHS	
Personal Crimes	37.7	63.5	+ 68%
Drug Related Crimes	32.5	40.5	+ 25%
Property Related Crimes	29.5	49.0	+ 66%
Other Crimes	24.0	24.2	+ 1%
Technical Violations	9.5	38.5	+305%
Overall Average	30.2	52.2	+ 73%

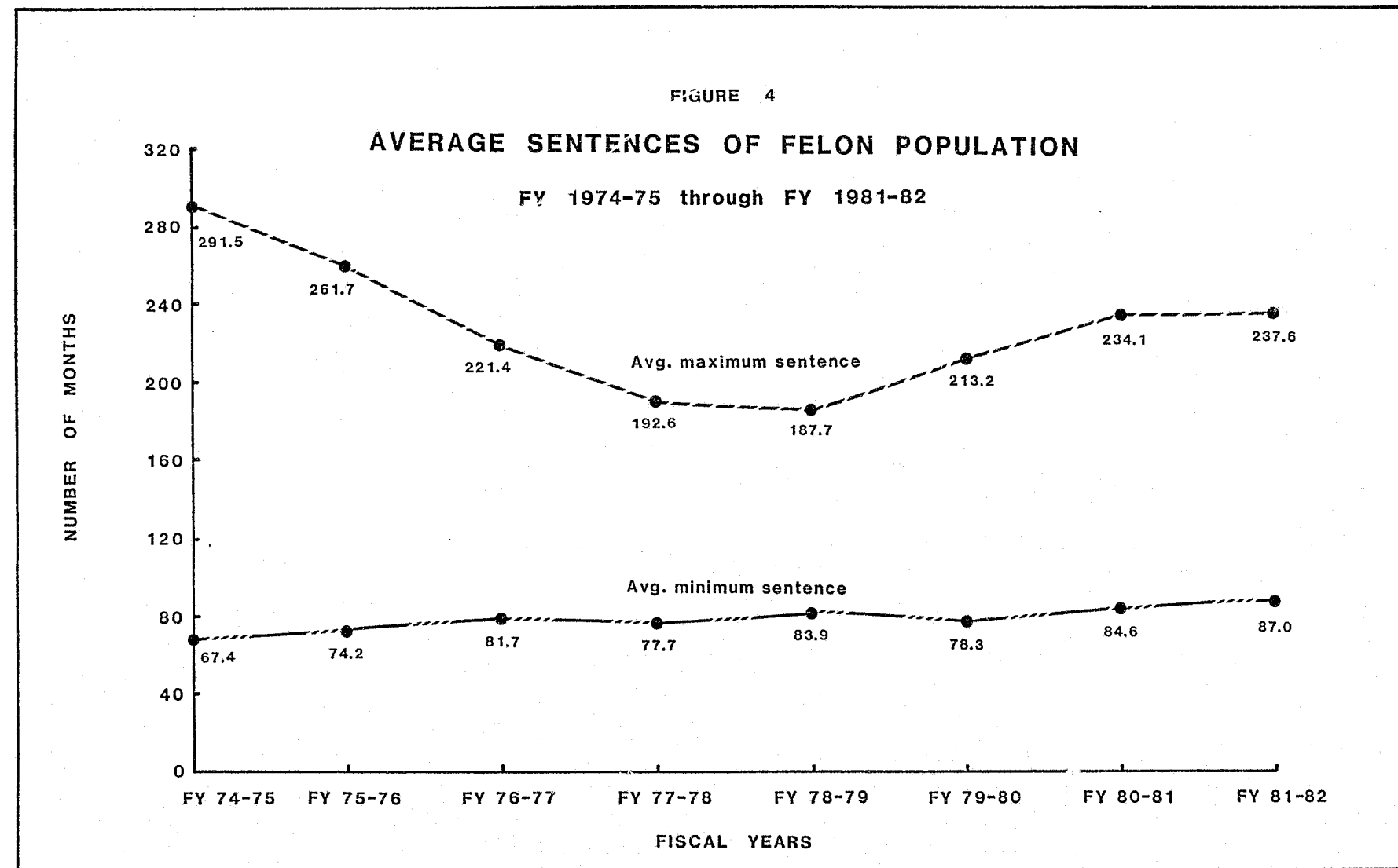
#### Average Sentence

Figure 4 shows the average minimum and maximum sentences of the felon population through fiscal years 1974-75 and 1981-82 inclusive. Since FY 1974-75, the average maximum sentence decreased by 18 percent (from 291.5 to 237.6 months); but there has been an upward trend beginning in FY 1978-79. Since that year the average maximum has increased by 27 percent (from 187.7 to 237.6 months). Meanwhile, the average minimum sentence for felons has slowly risen since FY 1974-75 by 29 percent (from 67.4 to 87.0 months).

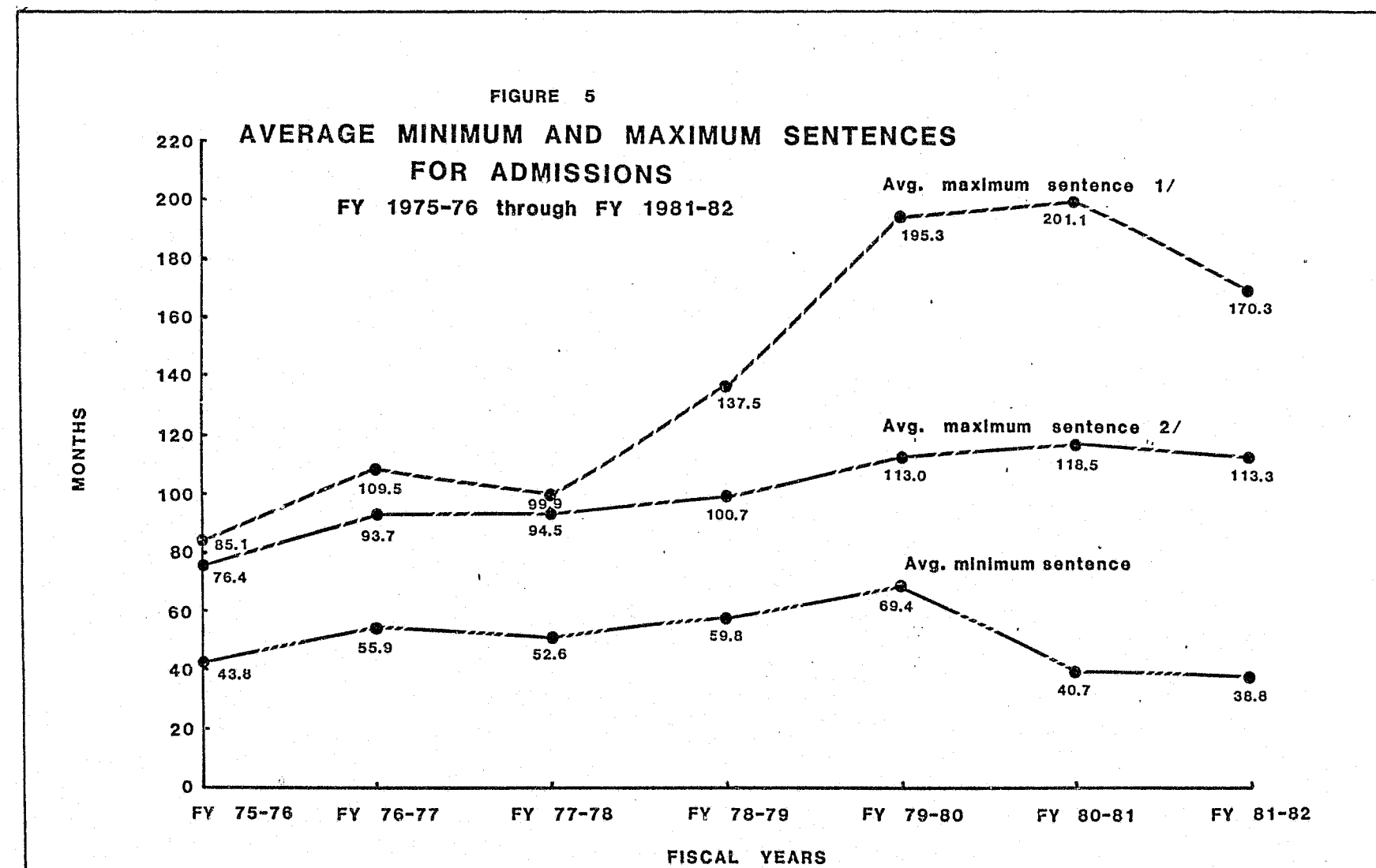
Figures 5 and 6 show trends in average minimums and maximums for admissions and releases. The averages are somewhat complicated because of life sentences. Figure 5 shows how the average maximums for admissions may differ when life with parole sentences are included. Life with parole sentences are calculated based on the average life expectancy of males subtracted by the individuals age at admission.<sup>5</sup> Life without parole sentences are not included in average minimums and maximums for admissions and releases.

Life with parole sentences are included in average minimums because like regular indeterminate sentences, the minimums are determined by the Paroling Authority. Such sentences are also included in average maximums and minimums for releases because there are individuals being released with life with parole sentences (See Table 4).

<sup>5</sup>The average life expectancy from birth for males in Hawaii is approximately 74 years according to the 1981 State Data Book. The male life expectancy figure was used because 90 percent of all sentenced felons in Hawaii are males.

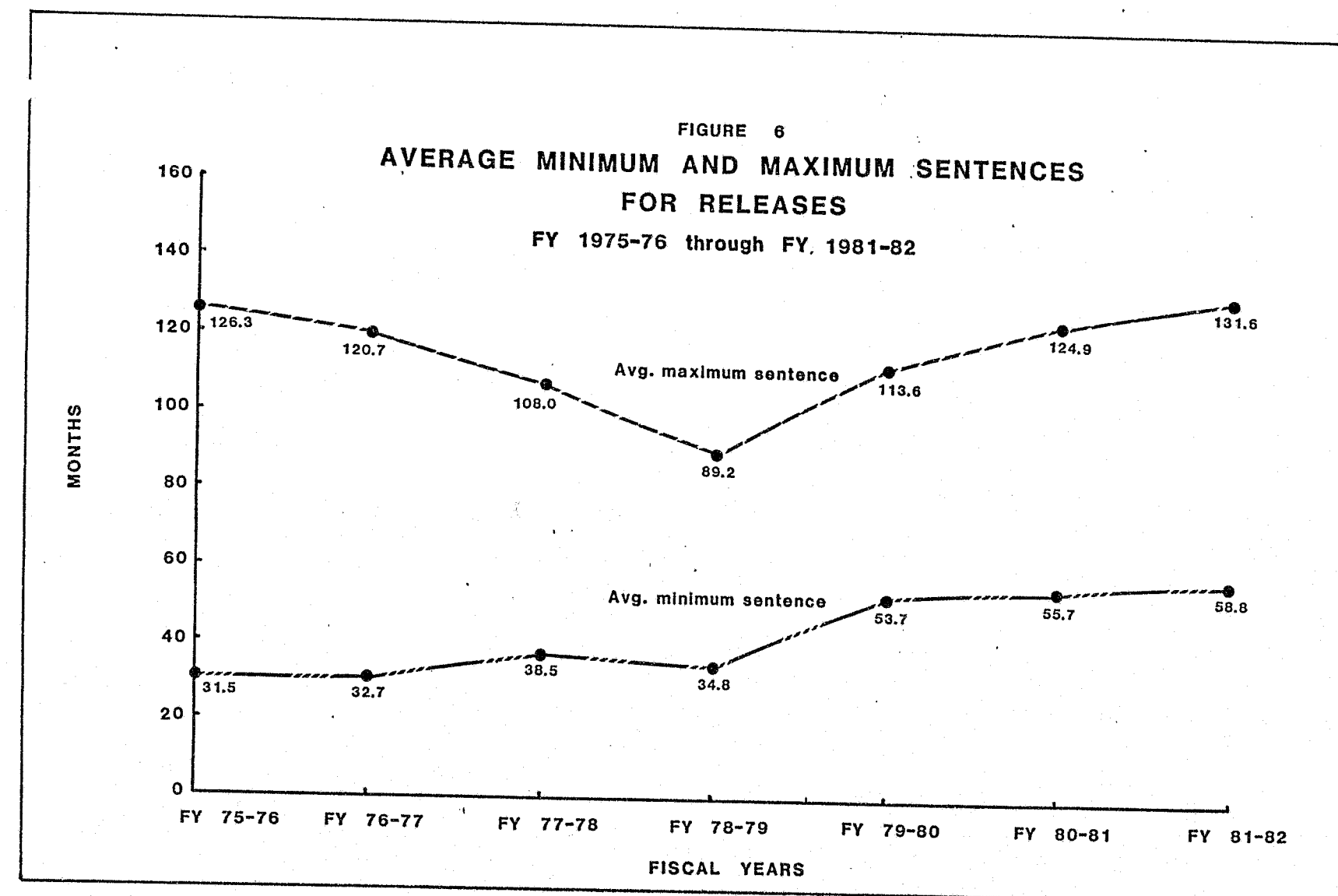


Includes life with and without parole sentences.



1/ Includes life with parole sentences.

2/ Excludes life with parole sentences.



Includes life with parole sentences.



Tables 6 and 7 show average minimum and maximum sentences of admissions by offense type. Note that the average minimum for admissions decreased by 27 percent, while the average maximum increased by 32 percent. It appears that the Paroling Authority is setting lower minimums despite higher maximum sentences. (See Figure 5)

TABLE 6  
AVERAGE MINIMUM SENTENCES  
FOR ADMITTED FELONS  
BY OFFENSE CLASS  
FY 1975-76 and FY 1981-82

OFFENSE TYPE	FY 1975-76	FY 1981-82	RATE OF CHANGE FY 1981-82 OVER FY 1975-76
	MONTHS	MONTHS	
Personal Crimes <sup>1</sup>	76.0	55.3	- 27%
Property Related Crimes	35.5	28.7	- 19%
Other Crimes	40.8	19.4	- 52%
Drug Related Crimes	51.0	25.2	- 51%
All Offense Types	45.6	38.8	- 15%

<sup>1</sup>Includes life with parole sentences.

TABLE 7  
AVERAGE MAXIMUM SENTENCES  
FOR ADMITTED FELONS  
BY OFFENSE CLASS  
FY 1975-76 and FY 1981-82

OFFENSE TYPE	FY 1975-76	FY 1981-82	RATE OF CHANGE FY 1981-82 OVER FY 1975-76
	MONTHS	MONTHS	
Personal Crimes	119.6 <sup>1</sup>	157.4 <sup>1</sup>	+ 32.0%
Property Related Crimes	74.7	85.3 <sup>1</sup>	+ 14.0%
Other Crimes	60.6	70.5	+ 16.0%
Drug Related Crimes	117.0	126.0	+ 8.0%
All Offense Types	76.4	113.3	+ 48.0%

<sup>1</sup>Excludes life with parole sentences. See Table A in Appendix I for average maximums which include life with parole sentences.

Tables 8 and 9 are similar to 6 and 7 with the exception that they are concerned with released felons. Table 8 shows that the average minimum sentence increased by 60 percent in FY 1981-82 over FY 1975-76. Table 9 shows that the average maximum sentence increased by 4 percent over the same two periods.

In comparing Table 8 with Table 6, the average minimums for releases are usually higher than that of admissions. Keep in mind that the Paroling Authority, in reconsidering minimum sentences, can extend such terms.

As in Tables 6 and 7, there is no distinct pattern involving offense classes. (See Tables H and I in Appendix I for information between FY 1975-76 and FY 1981-82.)

TABLE 8  
AVERAGE MINIMUM SENTENCES  
FOR FELONS RELEASED  
BY OFFENSE CLASS  
FY 1975-76 and FY 1981-82

OFFENSE TYPE	FY 1975-76	FY 1981-82	RATE OF CHANGE FY 1981-82 OVER FY 1975-76
	MONTHS	MONTHS	
Personal Crimes <sup>1</sup>	45.2	72.2	+ 60%
Property Related Crimes	31.2	57.3	+ 84%
Other Crimes	24.9	38.3	+ 54%
Drug Related Crimes	33.0	48.0	+ 45%
All Offense Types	31.5	58.8	+ 87%

<sup>1</sup>Includes life with parole sentences.

TABLE 9  
AVERAGE MAXIMUM SENTENCES  
FOR FELONS RELEASED  
BY OFFENSE CLASS  
FY 1975 -76 and FY 1981-82

OFFENSE TYPE	FY 1975-76	FY 1981-82	RATE OF CHANGE FY 1981-82 OVER FY 1975-76
	MONTHS	MONTHS	
Personal Crimes <sup>1</sup>	201.9	196.7	- 3%
Property Related Crimes	110.8	89.0	-20%
Other Crimes	66.5	54.0	-19%
Drug Related Crimes	120.0	90.0	-25%
All Offense Types	126.3	131.6	+ 5%

<sup>1</sup>Includes life with parole sentences.

# DEMOGRAPHIC STATISTICS

## Age at Commitment

Table 10 compares the age at commitment as of June 30, 1975 with that of June 30, 1982. Excluding the unknown factor, the 1982 data shows some change when compared with that of 1975. The median age of commitment dropped from 25.4 years in 1975 to 24.2 years in 1982.<sup>6</sup> (See Table J in Appendix I for trends occurring since 1975.)

TABLE 10  
AGE AT COMMITMENT FOR FELONS  
June 30, 1975 and June 30, 1982

AGE	AS OF JUNE 30, 1975	AS OF JUNE 30, 1982	RATE OF CHANGE
< 20	30 ( 9%)	50 ( 6%)	+ 67%
20-24	101 (31%)	306 (36%)	+203%
25-29	80 (25%)	198 (23%)	+148%
30-34	28 ( 9%)	90 (11%)	+221%
35-39	16 ( 5%)	43 ( 5%)	+169%
40-44	8 ( 2%)	34 ( 4%)	+325%
> 44	12 ( 4%)	37 ( 4%)	+208%
UNKNOWN	48 (15%)	95 (11%)	+ 98%
TOTAL POPULATION	323	853	+164%

<sup>6</sup>The median age was computed by using the group data method  
(Md =  $L + \frac{N/2 - F}{f}$  i) excluding the unknown factor.

## Current Age

Table 11 matches the current age of committed felons. The median age as of June 30, 1982 was 28.7; slightly higher than the 27.1 of June 30, 1975. Apparently, the longer time served by felons affected the age factor, as committed felons 30 years of age and over comprised 44 percent of the total population as of June 30, 1982, as compared to 1975, which was only 35 percent. (See Table K in Appendix I.)

TABLE 11  
CURRENT AGE OF COMMITTED FELONS  
June 30, 1975 and June 30, 1982

AGE	AS OF JUNE 30, 1975	AS OF JUNE 30, 1982	RATE OF CHANGE
< 20	18 ( 6%)	6 ( 1%)	+ 50%
20-24	98 (30%)	230 (27%)	+115%
25-29	99 (31%)	255 (30%)	+158%
30-34	48 (15%)	154 (18%)	+221%
35-39	21 ( 7%)	94 (11%)	+348%
40-44	18 ( 6%)	41 ( 5%)	+128%
> 44	21 ( 7%)	73 ( 9%)	+248%
TOTAL POPULATION	323	853	+164%

# Ethnic Background

Table 12 shows the ethnic background of felons as of June 30, 1975 and June 30, 1982. Although there was a large increase in the number of Caucasians and Part Hawaiians, there has not been a significant change in the overall ethnic distribution of felons. (See Table L in Appendix I.)

TABLE 12

ETHNIC BACKGROUND OF FELONS  
June 30, 1975 and June 30, 1982

ETHNIC CATEGORY	AS OF JUNE 30, 1975	AS OF JUNE 30, 1982	RATE OF CHANGE
CAUCASIAN	43 (13%)	134 (16%)	+212%
CHINESE	5 (2%)	7 (1%)	+ 40%
FILIPINO	21 (7%)	70 (8%)	+233%
HAWAIIAN	3 (1%)	9 (1%)	+200%
PART-HAWAIIAN	141 (44%)	387 (45%)	+174%
JAPANESE	24 (7%)	45 (5%)	+ 88%
KOREAN	3 (1%)	5 (1%)	+ 67%
BLACK	10 (3%)	31 (4%)	+210%
PORTUGUESE	24 (7%)	50 (6%)	+108%
PUERTO RICAN	17 (5%)	31 (4%)	+ 82%
SAMOAN	15 (5%)	65 (8%)	+333%
OTHER	15 (5%)	11 (1%)	- 27%
UNKNOWN <sup>1</sup>	2 (1%)	8 (1%)	+300%
TOTAL POPULATION	323	853	+164%

<sup>1</sup>Race not reported.

# County of Conviction

According to Table 13, the percentage of felons convicted in Oahu, Maui, and Kauai increased percentage wise in 1981 whereas that of Hawaii decreased.

Overall, the combined percentage of felons convicted outside of the City and County of Honolulu (Oahu) was 18 percent as of June 30, 1982, whereas in 1975, it was 16 percent. The change can be misleading because there is a significant unknown factor. (Refer to Table M in Appendix I.)

TABLE 13

COUNTY OF CONVICTION FOR FELON POPULATION  
June 30, 1975 and June 30, 1982

COUNTY	AS OF JUNE 30, 1975	AS OF JUNE 30, 1982	RATE OF CHANGE
HONOLULU	221 (68%)	604 (71%)	+173%
HAWAII	37 (11%)	80 (9%)	+116%
MAUI	13 (4%)	51 (6%)	+292%
KAUAI	4 (1%)	23 (3%)	+475%
UNKNOWN <sup>1</sup>	48 (15%)	95 (11%)	+ 98%
TOTAL POPULATION	323	853	+164%

Distribution based on circuit court in which the individual was convicted from.

<sup>1</sup>Includes probationers with no offenses recorded and committed for a short while.

### Length of Residence

Table 14 compares the length of residence for felons committed as of June 30, 1975 and June 30, 1982. The 1982 data shows a greater percentage of individuals with residences of 20 years or more (96 versus 85 percent in 1975). ( See Table N in Appendix I to note the changes occurring since 1975.)

TABLE 14

LENGTH OF RESIDENCE FOR FELONS  
June 30, 1975 and June 30, 1982

LENGTH OF RESIDENCY	AS OF JUNE 30, 1975	AS OF JUNE 30, 1982	RATE OF CHANGE
Under 1 year	10 ( 3.0%)	2 ( 0.2%)	- 80%
1-5 years	14 ( 4.0%)	12 ( 1.4%)	- 14%
5-9 years	12 ( 4.0%)	10 ( 1.2%)	- 17%
10-19 years	14 ( 4.0%)	8 ( 1.0%)	- 43%
20+ years	273 (85.0%)	821 (96.0%)	+201%
TOTAL POPULATION	323	853	+164%

Note: The length of residence does not include time served in prison.

### Prior Felony Commitments

Table 15 shows prior felony commitments of felons. The 1982 data indicates that there were relatively more felons committed with no prior felony commitment records than in 1975. This would suggest that the recommitment rate is low due to either low recidivism rates, convictions resulting in non-commitments, or other types of commitment (e.g., misdemeanors). (To note trends, refer to Table O in Appendix I.)

TABLE 15

PRIOR FELONY COMMITMENTS OF FELONS  
June 30, 1975 and June 30, 1982

NUMBER OF PRIOR COMMITMENTS	AS OF JUNE 30, 1975	AS OF JUNE 30, 1982	RATE OF CHANGE
0	265 (82.0%)	742 (87.0%)	+180%
1	35 (11.0%)	75 ( 8.8%)	+114%
2	18 ( 5.0%)	20 ( 2.3%)	+ 11%
3	3 ( 1.0%)	11 ( 1.3%)	+267%
4	1 ( 0.3%)	3 ( 0.4%)	+200%
5	1 ( 0.3%)	2 ( 0.2%)	+100%
TOTAL POPULATION	323	853	+164%

### Drug and Alcohol Use

Tables 16 and 17 show drug and alcohol use by felons. Because of the large number of unreported cases, it was decided to use 1977 as the base year rather than 1975. Tables P and Q in the Appendix contain data for the years 1975 to 1982.

TABLE 16

DRUG USE BY FELONS  
June 30, 1977 and June 30, 1982

DRUG USE	AS OF JUNE 30, 1977	AS OF JUNE 30, 1982	RATE OF CHANGE
None	76 (19%)	115 (13%)	+ 51%
Occasional	90 (23%)	117 (14%)	+ 30%
Problem	31 ( 8%)	66 ( 8%)	+113%
Associated with Offense	93 (24%)	187 (22%)	+101%
Not Reported	93 (24%)	368 (43%)	+296%
TOTAL POPULATION	383	853	+123%

TABLE 17

ALCOHOL USE BY FELONS  
June 30, 1977 and June 30, 1982

ALCOHOL USE	AS OF JUNE 30, 1977	AS OF JUNE 30, 1982	RATE OF CHANGE
None	28 ( 7%)	71 ( 8%)	+154%
Occasional	103 (34%)	196 (23%)	+ 90%
Problem	29 ( 8%)	74 ( 8%)	+155%
Associated with Offense	111 (29%)	171 (20%)	+ 54%
Not Reported	85 (22%)	341 (40%)	+301%
TOTAL POPULATION	383	853	+123%

### Crime Types

Table 18 shows crime types committed by felons for 1975 and 1982. Larger percentages of felons were committed for sex and property crimes in 1982, but not for personal and "other" crimes.

Even with the inclusion of sex crimes, the percentage of felons committed for personal crimes have been stable since 1975. (See Table U in Appendix I.)

TABLE 18

CRIME TYPES COMMITTED BY FELONS  
June 30, 1975 and June 30, 1982

CRIME TYPES	AS OF JUNE 30, 1975	AS OF JUNE 30, 1982	RATE OF CHANGE
Personal Crimes	147 (46%)	386 (45%)	+163%
Sex Crimes	30 ( 9%)	99 (11%)	+230%
Property Crimes	66 (20%)	212 (24%)	+221%
All Others	80 (25%)	156 (18%)	+ 95%
TOTAL POPULATION	323	853	+164%

# CONCLUSION

The widening gap between admissions and releases, longer time served, increasing minimum and maximum sentences, and the aging of the felon population appear to be manifestations of the prevailing attitude and policies related to the punishment rather than rehabilitation of offenders.

As long as the trend continues, not only an increasing felon, but an increasing non-felon population can be expected as misdemeanants and pre-trials are being incarcerated at an equal or greater rate.

Appendix I

[doc# 0095c]

TABLE A  
ADMISSIONS BY SUMMARY OFFENSE  
FY 1975-76 to FY 1981-82

FISCAL YEAR	OFFENSE CLASS					TOTAL
	Personal Crimes	Property Crimes	Other Crimes	Technical Violations	Drug-Related Crimes	ADMISSIONS
1975-76	33 (29%)	40 (35%)	20 (18%)	16 (14%)	4 (4%)	113 (100%)
1976-77	46 (42%)	31 (28%)	10 (9%)	19 (17%)	4 (4%)	110 (100%)
1977-78	59 (40%)	55 (37%)	10 (7%)	15 (10%)	10 (7%)	149 (100%)
1978-79	77 (39%)	51 (26%)	61 (31%)	2 (1%)	8 (4%)	199 (100%)
1979-80	98 (46%)	66 (31%)	29 (14%)	9 (4%)	11 (5%)	213 (100%)
1980-81	106 (50%)	61 (30%)	27 (13%)	6 (3%)	11 (5%)	211 (100%)
1981-82	125 (48%)	78 (30%)	32 (12%)	13 (5%)	10 (4%)	258 (100%)
CLASS AVERAGE*	78 (44%)	55 (31%)	27 (15%)	11 (6%)	8 (4%)	179 (100%)

\*Rounded to the highest integer.  
Percentage may not add up to 100 due to rounding.

TABLE B  
RELEASES BY SUMMARY OFFENSE  
FY 1975-76 to FY 1981-82

FISCAL YEAR	OFFENSE CLASS					TOTAL
	Personal Crimes	Property Crimes	Other Crimes	Technical Violations	Drug-Related Crimes	RELEASES
1975-76	35 (39%)	30 (33%)	11 (12%)	12 (13%)	2 (2%)	90 (100%)
1976-77	29 (41%)	26 (37%)	5 (7%)	9 (13%)	2 (2%)	71 (100%)
1977-78	21 (33%)	25 (39%)	9 (14%)	6 (9%)	3 (5%)	64 (100%)
1978-79	25 (37%)	16 (24%)	6 (9%)	15 (22%)	5 (7%)	67 (100%)
1979-80	16 (28%)	24 (41%)	4 (7%)	10 (17%)	4 (7%)	58 (100%)
1980-81	26 (36%)	26 (36%)	8 (11%)	5 (7%)	6 (8%)	71 (100%)
1981-82	18 (36%)	12 (32%)	4 (11%)	2 (5%)	2 (5%)	38 (100%)
CLASS AVERAGE*	24 (36%)	22 (33%)	7 (11%)	9 (14%)	4 (6%)	66 (100%)

\*Rounded to the highest integer.  
Percentage may not add up to 100 due to rounding.

TABLE C  
ADMISSIONS BY SENTENCE TYPE  
FY 1975-76 to FY 1981-82

FISCAL YEAR	SENTENCE TYPE					TOTAL ADMISSIONS
	Other**	Youthful Offender	PVT1 Only	Life with Parole	Life without Parole	
1975-76	66 (58%)	30 (27%)	16 (14%)	1 (1%)	0 (0%)	113 (100%)
1976-77	77 (70%)	12 (11%)	19 (17%)	2 (2%)	0 (0%)	110 (100%)
1977-78	94 (63%)	39 (26%)	15 (10%)	1 (1%)	0 (0%)	149 (100%)
1978-79	158 (78%)	36 (18%)	2 (1%)	1 (1%)	6 (3%)	203 (100%)
1979-80	163 (77%)	24 (11%)	9 (4%)	17 (8%)	0 (0%)	213 (100%)
1980-81	171 (81%)	17 (8%)	6 (3%)	17 (8%)	0 (0%)	211 (100%)
1981-82	236 (91%)	8 (3%)	0 (0%)	12 (1%)	2 (1%)	258 (100%)
AVERAGE*	138 (77%)	24 (13%)	10 (6%)	7 (4%)	1 (1%)	180 (100%)

\*Rounded to the highest integer.  
Percentage may not add up to 100 due to rounding.  
\*\*"Other" means regular sentences.

TABLE D  
RELEASES BY SENTENCE TYPE  
FY 1975-76 to FY 1981-82

FISCAL YEAR	SENTENCE TYPE					TOTAL ADMISSIONS
	Other**	Youthful Offender	PVT1 Only	Life with Parole	Life without Parole	
1975-76	74 (82%)	4 (4%)	12 (13%)	0 (0%)	0 (0%)	90 (100%)
1976-77	54 (76%)	8 (1%)	9 (13%)	0 (0%)	0 (0%)	71 (100%)
1977-78	54 (84%)	4 (6%)	6 (9%)	0 (0%)	0 (0%)	64 (100%)
1978-79	45 (67%)	7 (10%)	15 (22%)	0 (0%)	0 (0%)	67 (100%)
1979-80	42 (72%)	6 (10%)	10 (17%)	0 (0%)	0 (0%)	58 (100%)
1980-81	47 (66%)	17 (24%)	5 (7%)	2 (3%)	0 (0%)	71 (100%)
1981-82	31 (82%)	7 (18%)	0 (0%)	0 (0%)	0 (0%)	38 (100%)
AVERAGE*	50 (76%)	8 (12%)	8 (12%)	1 (2%)	0 (0%)	66 (100%)

\*Rounded to the highest integer.  
Percentage may not add up to 100 due to rounding.  
\*\*"Other" means regular sentences.



TABLE E  
RELEASES BY AVERAGE TIME SERVED  
BY OFFENSE CLASS  
FY 1975-76 to FY 1981-82

FISCAL YEAR	OFFENSE CLASS					ALL OFFENSE TYPES
	Personal Crimes	Property Crimes	Other Crimes	Drug-Related Crimes	Technical Violations	
1975-76	37.7 months	29.5 months	24.0 months	32.5 months	9.5 months	30.2 months
1976-77	43.0 months	30.0 months	25.6 months	18.5 months	13.7 months	32.6 months
1977-78	50.4 months	31.7 months	31.6 months	43.3 months	4.3 months	35.8 months
1978-79	50.8 months	30.7 months	33.0 months	42.2 months	20.1 months	36.9 months
1979-80	65.1 months	36.9 months	50.5 months	43.3 months	16.4 months	46.4 months
1980-81	67.2 months	36.3 months	31.8 months	51.2 months	22.4 months	47.4 months
1981-82	63.5 months	49.0 months	24.2 months	40.5 months	38.5 months	52.2 months
AVERAGE*	53.9 months	34.9 months	31.5 months	38.8 months	17.8 months	40.2 months

\*Figures have been rounded.

TABLE F  
AVERAGE MINIMUM SENTENCES  
FOR ADMITTED FELONS  
BY OFFENSE CLASS  
FY 1975-76 to FY 1981-82

FISCAL YEAR	OFFENSE CLASS				ALL OFFENSE TYPES
	Personal Crimes	Property Crimes	Other Crimes	Drug-Related Crimes	
1975-76	76.0 months	35.5 months	40.8 months	51.0 months	43.8 months
1976-77	88.3 months	45.8 months	49.2 months	45.0 months	55.9 months
1977-78	91.6 months	33.7 months	22.2 months	35.4 months	52.6 months
1978-79	94.8 months	43.3 months	36.8 months	48.0 months	59.8 months
1979-80	109.6 months	35.2 months	38.1 months	56.7 months	69.4 months
1980-81	60.7 months	21.6 months	24.6 months	15.8 months	40.7 months
1981-82	55.3 months	28.7 months	19.4 months	25.2 months	38.8 months
AVERAGE*	82.3 months	34.8 months	33.0 months	39.6 months	51.6 months

\*Figures have been rounded. Includes life with parole sentences.

TABLE G  
AVERAGE MAXIMUM SENTENCES  
FOR ADMITTED FELONS  
BY OFFENSE CLASS  
FY 1975-76 to FY 1981-82

FISCAL YEAR	OFFENSE CLASS				ALL OFFENSE TYPES
	Personal Crimes	Property Crimes	Other Crimes	Drug-Related Crimes	
1975-76	119.6 months	74.7 months	60.6 months	117.0 months	76.4 months
1976-77	142.4 months	79.4 months	66.6 months	120.0 months	93.7 months
1977-78	133.9 months	72.4 months	56.4 months	156.0 months	94.5 months
1978-79	157.4 months	80.0 months	57.2 months	114.4 months	100.7 months
1979-80	169.9 months	78.5 months	65.8 months	114.0 months	113.0 months
1980-81	169.9 months	77.4 months	62.2 months	125.5 months	118.5 months
1981-82	157.4 months	85.3 months	70.5 months	126.0 months	113.3 months
AVERAGE*	150.1 months	78.2 months	62.7 months	124.7 months	101.44 months

\*Figures have been rounded.

Life without parole sentences are excluded. With life with parole sentences, the following average maximums would be:

FISCAL YEAR	OFFENSE CLASS			ALL OFFENSE TYPES
	Personal Crimes	Property Crimes	Drug-Related Crimes	
1975-76	131.7 months	87.0 months	128.2 months	80.5 months
1976-77	163.4 months			102.2 months
1977-78	138.1 months			99.1 months
1978-79	198.7 months			119.0 months
1979-80	242.1 months			151.3 months
1980-81	266.4 months			173.5 months
1981-82	198.9 months			135.8 months
AVERAGE	191.3 months	79.6 months	126.7 months	123.1 months

TABLE H  
AVERAGE MINIMUM SENTENCES  
FOR FELONS RELEASED  
BY OFFENSE CLASS  
FY 1975-76 to FY 1981-82

FISCAL YEAR	OFFENSE CLASS				ALL OFFENSE TYPES
	Personal Crimes	Property Crimes	Other Crimes	Drug-Related Crimes	
1975-76	45.2 months	31.2 months	24.9 months	33.0 months	31.5 months
1976-77	47.4 months	29.7 months	28.8 months	17.0 months	32.7 months
1977-78	56.9 months	33.0 months	34.7 months	44.0 months	38.5 months
1978-79	54.0 months	33.1 months	35.0 months	48.0 months	34.8 months
1979-80	85.2 months	35.4 months	75.0 months	51.0 months	53.7 months
1980-81	90.0 months	39.4 months	33.3 months	51.1 months	55.7 months
1981-82	72.2 months	57.3 months	38.3 months	48.0 months	58.8 months
AVERAGE*	64.4 months	37.0 months	38.6 months	41.7 months	43.7 months

\*Figures have been rounded. Includes life with parole sentences.

TABLE I  
AVERAGE MAXIMUM SENTENCES  
FOR FELONS RELEASED  
BY OFFENSE CLASS  
FY 1975-76 to FY 1981-82

FISCAL YEAR	OFFENSE CLASS				ALL OFFENSE TYPES
	Personal Crimes	Property Crimes	Other Crimes	Drug-Related Crimes	
1975-76	201.9 months	110.8 months	66.5 months	120.0 months	126.3 months
1976-77	190.3 months	97.8 months	64.8 months	90.0 months	120.7 months
1977-78	185.1 months	80.1 months	66.7 months	140.0 months	108.0 months
1978-79	159.8 months	67.5 months	60.0 months	108.0 months	89.2 months
1979-80	193.5 months	72.8 months	75.0 months	120.0 months	113.6 months
1980-81	216.7 months	69.7 months	64.5 months	140.0 months	124.9 months
1981-82	196.7 months	89.0 months	54.0 months	90.0 months	131.6 months
AVERAGE*	192.0 months	83.9 months	64.5 months	115.4 months	116.3 months

\*Figures have been rounded. Includes life with parole sentences.

TABLE J  
AGE AT COMMITMENT FOR FELONS  
06/30/75 to 06/30/82

AGE	AS OF 06/30/75	AS OF 06/30/76	AS OF 06/30/77	AS OF 06/30/78	AS OF 06/30/79	AS OF 06/30/80	AS OF 06/30/81	AS OF 06/30/82	OVERALL* AVERAGE
20	30 ( 9%)	39 ( 11%)	36 ( 9%)	47 ( 11%)	57 ( 11%)	60 ( 10%)	50 ( 7%)	50 ( 6%)	47 ( 9%)
20-24	101 ( 31%)	123 ( 35%)	124 ( 32%)	155 ( 37%)	160 ( 32%)	220 ( 35%)	232 ( 33%)	306 ( 36%)	178 ( 23%)
25-29	80 ( 25%)	86 ( 25%)	102 ( 27%)	110 ( 26%)	120 ( 24%)	149 ( 24%)	166 ( 24%)	198 ( 23%)	127 ( 24%)
30-34	28 ( 9%)	39 ( 11%)	38 ( 10%)	43 ( 10%)	47 ( 9%)	75 ( 12%)	76 ( 11%)	90 ( 11%)	55 ( 11%)
35-39	16 ( 5%)	17 ( 5%)	16 ( 4%)	20 ( 5%)	21 ( 4%)	29 ( 5%)	30 ( 4%)	43 ( 5%)	24 ( 5%)
40-44	8 ( 2%)	7 ( 2%)	9 ( 2%)	13 ( 3%)	19 ( 4%)	21 ( 3%)	23 ( 3%)	34 ( 4%)	17 ( 3%)
44	12 ( 4%)	9 ( 3%)	8 ( 2%)	12 ( 3%)	12 ( 2%)	20 ( 3%)	24 ( 3%)	37 ( 4%)	17 ( 3%)
Unknown	48 ( 15%)	29 ( 8%)	50 ( 13%)	18 ( 4%)	18 ( 4%)	52 ( 8%)	99 ( 14%)	95 ( 11%)	52 ( 10%)
TOTAL POPULATION	323 (100%)	349 (100%)	383 (100%)	418 (100%)	504 (100%)	626 (100%)	700 (100%)	853 (100%)	520 (100%)

\*Figures have been rounded to the highest integer.  
Percentage may not add up to 100 due to rounding.

TABLE K  
CURRENT AGE OF COMMITTED FELONS  
06/30/75 to 06/30/82

AGE	AS OF 06/30/75	AS OF 06/30/76	AS OF 06/30/77	AS OF 06/30/78	AS OF 06/30/79	AS OF 06/30/80	AS OF 06/30/81	AS OF 06/30/82	OVERALL* AVERAGE
20	18 ( 6%)	43 ( 12%)	65 ( 17%)	20 ( 5%)	59 ( 12%)	110 ( 18%)	28 ( 4%)	6 ( 1%)	44 ( 8%)
20-24	98 ( 30%)	110 ( 32%)	119 ( 31%)	121 ( 29%)	150 ( 30%)	192 ( 31%)	211 ( 30%)	230 ( 27%)	154 ( 30%)
25-29	99 ( 31%)	93 ( 27%)	101 ( 26%)	132 ( 32%)	138 ( 27%)	159 ( 25%)	197 ( 28%)	255 ( 30%)	147 ( 28%)
30-34	48 ( 15%)	51 ( 15%)	48 ( 13%)	70 ( 17%)	73 ( 14%)	82 ( 13%)	138 ( 20%)	154 ( 18%)	83 ( 16%)
35-39	21 ( 7%)	21 ( 6%)	22 ( 6%)	31 ( 7%)	33 ( 7%)	31 ( 5%)	56 ( 8%)	94 ( 11%)	39 ( 8%)
40-44	18 ( 6%)	17 ( 5%)	13 ( 3%)	23 ( 5%)	28 ( 6%)	26 ( 4%)	28 ( 4%)	41 ( 5%)	25 ( 5%)
44	21 ( 7%)	14 ( 4%)	15 ( 4%)	21 ( 5%)	23 ( 5%)	26 ( 4%)	42 ( 6%)	73 ( 9%)	30 ( 6%)
TOTAL POPULATION	323 (100%)	349 (100%)	383 (100%)	418 (100%)	504 (100%)	626 (100%)	700 (100%)	853 (100%)	520 (100%)

\*Figures have been rounded to the highest integer.  
Percentage may not add up to 100 due to rounding.

TABLE L  
ETHNIC BACKGROUND OF FELONS  
06/30/75 to 06/30/82

ETHNIC CATEGORY	AS OF 06/30/75	AS OF 06/30/76	AS OF 06/30/77	AS OF 06/30/78	AS OF 06/30/79	AS OF 06/30/80	AS OF 06/30/81	AS OF 06/30/82	OVERALL* AVERAGE
CAUCASIAN	43 ( 13%)	44 ( 13%)	46 ( 12%)	51 ( 12.0%)	64 ( 13%)	86 ( 14.0%)	109 ( 16%)	134 ( 16%)	73 ( 14%)
CHINESE	5 ( 2%)	7 ( 2%)	7 ( 2%)	5 ( 1.0%)	5 ( 1%)	7 ( 1.0%)	6 ( 1%)	7 ( 1%)	6 ( 1%)
FILIPINO	21 ( 7%)	29 ( 8%)	32 ( 8%)	36 ( 9.0%)	41 ( 8%)	51 ( 8.0%)	63 ( 9%)	70 ( 8%)	43 ( 8%)
HAWAIIAN	3 ( 1%)	8 ( 2%)	8 ( 2%)	10 ( 2.0%)	8 ( 2%)	9 ( 2.0%)	10 ( 1%)	9 ( 1%)	9 ( 2%)
PART-HAWAIIAN	141 ( 44%)	151 ( 43%)	166 ( 43%)	189 ( 45.0%)	240 ( 48%)	293 ( 47.0%)	311 ( 44%)	387 ( 45%)	235 ( 45%)
JAPANESE	24 ( 7%)	21 ( 6%)	24 ( 6%)	25 ( 6.0%)	29 ( 6%)	34 ( 5.0%)	35 ( 5%)	45 ( 5%)	30 ( 6%)
KOREAN	3 ( 1%)	3 ( 1%)	2 ( 1%)	2 ( 0.5%)	3 ( 1%)	2 ( 0.3%)	4 ( 1%)	5 ( 1%)	3 ( 1%)
BLACK	10 ( 3%)	10 ( 3%)	10 ( 3%)	13 ( 3.0%)	15 ( 3%)	26 ( 4.0%)	27 ( 4%)	31 ( 4%)	18 ( 3%)
PORTUGESE	24 ( 7%)	23 ( 7%)	20 ( 5%)	16 ( 4.0%)	20 ( 4%)	33 ( 5.0%)	42 ( 6%)	50 ( 6%)	29 ( 6%)
PUERTO RICAN	17 ( 5%)	20 ( 6%)	23 ( 6%)	27 ( 6.0%)	27 ( 5%)	27 ( 4.0%)	28 ( 4%)	31 ( 4%)	25 ( 5%)
SAMOAN	15 ( 5%)	13 ( 4%)	22 ( 6%)	23 ( 6.0%)	30 ( 6%)	43 ( 7.0%)	48 ( 7%)	65 ( 8%)	33 ( 6%)
OTHER	15 ( 5%)	15 ( 4%)	16 ( 4%)	15 ( 4.0%)	14 ( 3%)	10 ( 2.0%)	12 ( 2%)	11 ( 1%)	14 ( 3%)
UNKNOWN	2 ( 1%)	5 ( 1%)	7 ( 2%)	6 ( 1.0%)	8 ( 2%)	5 ( 0.8%)	5 ( 1%)	8 ( 1%)	6 ( 1%)
TOTAL POPULATION	323 (100%)	349 (100%)	383 (100%)	418 (100.0%)	504 (100%)	626 (100.0%)	700 (100%)	853 (100%)	520 (100%)

\*Figures have been rounded to the highest integer.  
Percentage may not add up to 100 due to rounding.

TABLE M  
COUNTY OF CONVICTION  
FOR FELON POPULATION  
06/30/75 to 06/30/82

COUNTY	AS OF 06/30/75	AS OF 06/30/76	AS OF 06/30/77	AS OF 06/30/78	AS OF 06/30/79	AS OF 06/30/80	AS OF 06/30/81	AS OF 06/30/82	OVERALL* AVERAGE
HONOLULU	221 ( 68%)	256 ( 73%)	266 ( 69%)	317 ( 76%)	344 ( 68%)	450 ( 72%)	475 ( 68%)	604 ( 71%)	367 ( 71%)
HAWAII	37 ( 11%)	43 ( 12%)	47 ( 12%)	41 ( 10%)	48 ( 10%)	68 ( 11%)	66 ( 9%)	80 ( 9%)	54 ( 10%)
MAUI	13 ( 4%)	14 ( 4%)	16 ( 4%)	35 ( 8%)	31 ( 6%)	38 ( 6%)	39 ( 6%)	51 ( 6%)	30 ( 6%)
KAUAI	4 ( 1%)	7 ( 2%)	4 ( 1%)	8 ( 2%)	13 ( 3%)	18 ( 3%)	21 ( 3%)	23 ( 3%)	12 ( 2%)
UNKNOWN	48 ( 15%)	29 ( 8%)	50 ( 13%)	17 ( 4%)	68 ( 13%)	52 ( 8%)	99 ( 14%)	95 ( 11%)	57 ( 11%)
TOTAL POPULATION	323 (100%)	349 (100%)	383 (100%)	418 (100%)	504 (100%)	626 (100%)	700 (100%)	853 (100%)	520 (100%)

\*Figures have been rounded to the highest integer.  
Percentage may not add up to 100 due to rounding.

TABLE N  
LENGTH OF RESIDENCE  
FOR FELONS  
06/30/75 to 06/30/82

LENGTH OF RESIDENCY	AS OF 06/30/75	AS OF 06/30/76	AS OF 06/30/77	AS OF 06/30/78	AS OF 06/30/79	AS OF 06/30/80	AS OF 06/30/81	AS OF 06/30/82	OVERALL* AVERAGE
Under 1 year	10 ( 3%)	8 ( 2%)	7 ( 2%)	7 ( 2%)	7 ( 2%)	5 ( 1%)	2 ( 0.3%)	2 ( 0.3%)	6 ( 1%)
1-5 years	14 ( 4%)	9 ( 3%)	11 ( 3%)	13 ( 3%)	12 ( 3%)	14 ( 2%)	11 ( 1.6%)	12 ( 1.4%)	12 ( 2%)
5-9 years	12 ( 4%)	13 ( 4%)	10 ( 3%)	8 ( 2%)	10 ( 2%)	11 ( 2%)	13 ( 1.8%)	10 ( 1.2%)	11 ( 2%)
10-19 years	14 ( 4%)	12 ( 3%)	11 ( 3%)	9 ( 2%)	14 ( 3%)	10 ( 2%)	9 ( 1.3%)	8 ( 1.0%)	11 ( 2%)
20+ years	273 ( 85%)	307 ( 88%)	344 ( 90%)	381 ( 91%)	459 ( 91%)	586 ( 94%)	665 ( 95.0%)	821 ( 96.0%)	480 ( 92%)
TOTAL POPULATION	323 (100%)	349 (100%)	383 (100%)	418 (100%)	504 (100%)	626 (100%)	700 (100.0%)	853 (100.0%)	520 (100%)

\*Figures have been rounded to the highest integer.  
Percentage may not add up to 100 due to rounding.

TABLE 0  
PRIOR FELONY COMMITMENTS OF FELONS  
06/30/75 to 06/30/82

NUMBER OF PRIOR COMMITMENTS	AS OF 06/30/75	AS OF 06/30/76	AS OF 06/30/77	AS OF 06/30/78	AS OF 06/30/79	AS OF 06/30/80	AS OF 06/30/81	AS OF 06/30/82	OVERALL* AVERAGE
0	265 ( 82.0%)	314 ( 90.0%)	305 ( 79.0%)	356 ( 85.0%)	425 ( 84.0%)	519 ( 83.0%)	595 ( 85.0%)	742 ( 87.0%)	440 ( 85.0%)
1	35 ( 11.0%)	22 ( 6.0%)	52 ( 13.0%)	44 ( 11.0%)	61 ( 12.0%)	72 ( 12.0%)	69 ( 10.0%)	75 ( 9.0%)	54 ( 10.0%)
2	18 ( 5.0%)	10 ( 3.0%)	21 ( 5.0%)	13 ( 3.0%)	12 ( 2.0%)	23 ( 4.0%)	21 ( 3.0%)	20 ( 2.0%)	17 ( 3.0%)
3	3 ( 1.0%)	1 ( 0.3%)	4 ( 1.0%)	3 ( 0.7%)	4 ( 0.8%)	8 ( 1.0%)	10 ( 1.0%)	11 ( 1.0%)	6 ( 1.0%)
4	1 ( 0.3%)	0 ( 0.0%)	1 ( 0.3%)	1 ( 0.2%)	1 ( 0.2%)	2 ( 0.3%)	3 ( 0.4%)	3 ( 0.4%)	2 ( 0.3%)
UNKNOWN	1 ( 0.3%)	2 ( 0.6%)	0 ( 0.0%)	1 ( 0.2%)	1 ( 0.2%)	2 ( 0.3%)	2 ( 0.3%)	2 ( 0.3%)	1 ( 0.2%)
TOTAL POPULATION	323 (100.0%)	349 (100.0%)	383 (100.0%)	418 (100.0%)	504 (100.0%)	626 (100.0%)	700 (100.0%)	853 (100.0%)	520 (100.0%)

\*Figures have been rounded to the highest integer.  
Percentage may not add up to 100 due to rounding.

TABLE P  
DRUG USE BY FELONS  
06/30/75 to 06/30/82

DRUG USE	AS OF 06/30/75	AS OF 06/30/76	AS OF 06/30/77	AS OF 06/30/78	AS OF 06/30/79	AS OF 06/30/80	AS OF 06/30/81	AS OF 06/30/82	OVERALL* AVERAGE
None	45 ( 14%)	62 ( 18%)	76 ( 19%)	80 ( 19%)	95 ( 19%)	112 ( 18%)	119 ( 17%)	115 ( 13%)	88 ( 17%)
Occasional	38 ( 12%)	61 ( 17%)	90 ( 23%)	97 ( 23%)	97 ( 19%)	122 ( 19%)	133 ( 19%)	117 ( 14%)	94 ( 18%)
Problem	12 ( 4%)	15 ( 4%)	31 ( 8%)	35 ( 8%)	46 ( 9%)	63 ( 10%)	76 ( 11%)	66 ( 8%)	43 ( 8%)
Associated with Offense	75 ( 23%)	89 ( 26%)	93 ( 24%)	115 ( 28%)	144 ( 29%)	160 ( 26%)	198 ( 28%)	187 ( 22%)	132 ( 25%)
Not Reported	153 ( 47%)	122 ( 35%)	93 ( 24%)	91 ( 22%)	122 ( 24%)	169 ( 27%)	174 ( 25%)	162 ( 43%)	162 ( 31%)
TOTAL POPULATION	323 (100%)	349 (100%)	383 (100%)	418 (100%)	504 (100%)	626 (100%)	700 (100%)	853 (100%)	520 (100%)

\*Figures have been rounded to the highest integer.  
Percentage may not add up to 100 due to rounding.

TABLE Q  
ALCOHOL USE BY FELONS  
06/30/75 to 06/30/82

DRUG USE	AS OF 06/30/75	AS OF 06/30/76	AS OF 06/30/77	AS OF 06/30/78	AS OF 06/30/79	AS OF 06/30/80	AS OF 06/30/81	AS OF 06/30/82	OVERALL* AVERAGE
None	17 ( 5%)	24 ( 07%)	28 ( 8%)	34 ( 8%)	44 ( 9%)	68 ( 11%)	78 ( 11%)	71 ( 8%)	46 ( 5%)
Occasional	67 ( 21%)	103 ( 30%)	103 ( 34%)	145 ( 35%)	156 ( 31%)	196 ( 31%)	211 ( 30%)	196 ( 23%)	147 ( 28%)
Problem	15 ( 5%)	17 ( 5%)	29 ( 8%)	27 ( 6%)	39 ( 8%)	54 ( 9%)	75 ( 11%)	74 ( 8%)	41 ( 9%)
Associated with Offense	67 ( 21%)	81 ( 23%)	111 ( 29%)	127 ( 30%)	155 ( 31%)	161 ( 26%)	187 ( 27%)	171 ( 20%)	133 ( 26%)
Not Reported	157 ( 49%)	124 ( 36%)	85 ( 22%)	85 ( 20%)	110 ( 22%)	147 ( 23%)	149 ( 21%)	341 ( 40%)	150 ( 29%)
TOTAL POPULATION	323 (100%)	349 (100%)	383 (100%)	418 (100%)	504 (100%)	626 (100%)	700 (100%)	853 (100%)	520 (100%)

\*Figures have been rounded to the highest integer.  
Percentage may not add up to 100 due to rounding.



TABLE R  
CRIME TYPES COMMITTED BY FELONS  
06/30/75 to 06/30/82

CRIME TYPES	AS OF 06/30/75	AS OF 06/30/76	AS OF 06/30/77	AS OF 06/30/78	AS OF 06/30/79	AS OF 06/30/80	AS OF 06/30/81	AS OF 06/30/82	OVERALL* AVERAGE
Personal Crimes	147 ( 46%)	162 ( 46%)	163 ( 43%)	202 ( 48%)	207 ( 41%)	263 ( 42%)	292 ( 42%)	386 ( 45%)	228 ( 44%)
Sex Crimes	30 ( 9%)	41 ( 12%)	46 ( 12%)	52 ( 12%)	47 ( 9%)	80 ( 13%)	87 ( 12%)	99 ( 11%)	60 ( 12%)
Property Crimes	66 ( 20%)	80 ( 23%)	83 ( 22%)	105 ( 25%)	143 ( 28%)	190 ( 30%)	180 ( 26%)	212 ( 24%)	132 ( 25%)
All Others	80 ( 25%)	66 ( 19%)	91 ( 24%)	59 ( 14%)	107 ( 21%)	93 ( 15%)	141 ( 20%)	156 ( 18%)	99 ( 19%)
TOTAL POPULATION	323 (100%)	349 (100%)	383 (100%)	418 (100%)	504 (100%)	626 (100%)	700 (100%)	853 (100%)	520 (100%)

\*Figures have been rounded to the highest integer.  
Percentage may not add up to 100 due to rounding.

Appendix II

FOCUS Breakdown of Summary Offenses

- Personal Crimes - Abduction, Aggravated Assault, Assault with Weapon, Manslaughter, Attempted Murder, Murder First Degree, Murder Second Degree, Attempted Robbery, Robbery First Degree, Other Crimes Against Persons, Assault with intent to Rape, Carnal Abuse of Female Under 12, Indecent Assault, Attempted Rape, Rape, Sodomy, Pimping and Prostitution, and Other Sex Crimes.
- Property Crimes - Burglary First Degree, Burglary Second Degree, Forgery and Passing, Larceny, Malicious Burning, Malicious Conversion, Other Crimes Against Property.
- All Others - Possession/Sale of Narcotics, Possession of firearms, miscellaneous.
- Drug-Related - Possession/Sale of Narcotics  
(Note: Included in All Others Category in Table 21.)
- Sex Crimes - Assault with intent to Rape, Carnal Abuse of Female Under 12, Indecent Assault, Attempted Rape, Rape, Sodomy, Pimping and Prostitution, and Other Sex Crimes.  
(Note: Included in Personal Crimes Category in Tables 1, 3, 5, 6, 7, 8, and 9.)

**END**