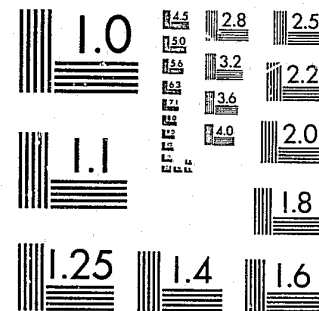


National Criminal Justice Reference Service

**ncjrs**

This microfiche was produced from documents received for inclusion in the NCJRS data base. Since NCJRS cannot exercise control over the physical condition of the documents submitted, the individual frame quality will vary. The resolution chart on this frame may be used to evaluate the document quality.



MICROCOPY RESOLUTION TEST CHART  
NATIONAL BUREAU OF STANDARDS-1963-A

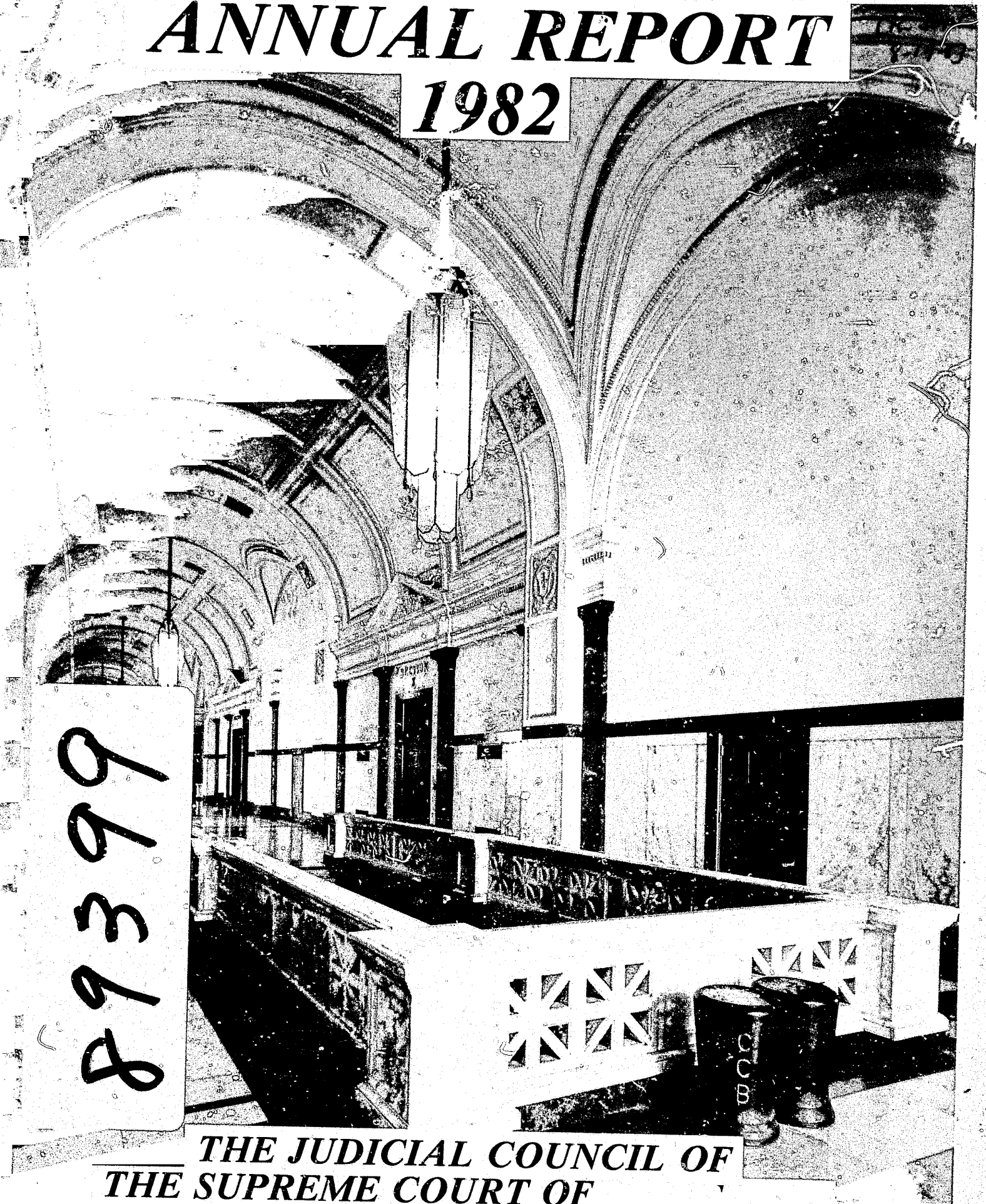
Microfilming procedures used to create this fiche comply with the standards set forth in 41CFR 101-11.504.

Points of view or opinions stated in this document are those of the author(s) and do not represent the official position or policies of the U. S. Department of Justice.

National Institute of Justice  
United States Department of Justice  
Washington, D. C. 20531

10/18/83

# ANNUAL REPORT 1982



U.S. Department of Justice  
National Institute of Justice

89399

This document has been reproduced exactly as received from the person or organization originating it. Points of view or opinions stated in this document are those of the authors and do not necessarily represent the official position or policies of the National Institute of Justice.

Permission to reproduce this copyrighted material has been granted by  
Paulette Holaitan/Deputy

Judicial Administrator/New Orleans

LA. to the National Criminal Justice Reference Service (NCJRS).

Further reproduction outside of the NCJRS system requires permission of the copyright owner.

*Cover Picture*

*La Nouvelle Salle Des Pieds Perdus (New Hall of Lost Steps)  
Orleans Criminal District Court Building*

*Designed after the Hall of Justice in Paris, France known as the Hall of Lost Steps. Therefore, the New Hall of Lost Steps.*

*The Criminal Courts Building was built in 1931 by the architects Collins, Debol and General Allison Owen. The beveled edge exterior walls of the towers on either end of the building are Egyptian with a row of tall Greek Corinthian columns on the Tulane facade. The interior is a mixture of Roman, Renaissance, Art Deco, and 19th Century Beaux Art.*

**THE JUDICIAL COUNCIL  
OF  
THE SUPREME COURT  
OF  
LOUISIANA**

**ANNUAL REPORT  
WITH  
1982 STATISTICS  
AND RELATED DATA**





NGJRS

APR 6 1983

## TABLE OF CONTENTS

ACQUISITIONS

### 1982 ANNUAL REPORT OF THE JUDICIAL COUNCIL

SUPREME COURT OF LOUISIANA  
301 Loyola Avenue  
New Orleans, Louisiana 70112

Eugene J. Murret  
Judicial Administrator

Letter of Transmittal .....	4
Supreme Court .....	5
Judicial Council .....	8
Judicial Administrator's Report .....	10
State Budget Graph .....	11
Judicial College .....	12
Judiciary Commission .....	14
Law Library of Louisiana .....	15
Courts of Appeal .....	16
District Courts .....	20
Family and Juvenile Courts .....	20
City and Parish Courts .....	27

### STATISTICAL SECTION

Introduction .....	30
Supreme Court .....	31
Courts Of Appeal .....	33
District Courts .....	34
Family and Juvenile Courts .....	37
City And Parish Courts .....	38
Maps .....	42
Court Structure .....	47

### EDITOR

Paulette Holahan

### STATISTICAL SECTION

Dr. Hugh Collins

Ronald Wm. Stritzinger

Lansing L. Mitchell, Jr.

Dorothy McLain

### SECRETARIAL ASSISTANCE

Jodie O. Green

Preceding page blank



CHIEF JUSTICE  
JOHN A. DIXON, JR.  
ASSOCIATE JUSTICES  
PASCAL F. CALOGERO, JR.  
WALTER F. MARCUS, JR.  
JAMES L. DENNIS  
FRED A. BLANCHE, JR.  
JACK CROZIER WATSON  
HARRY T. LEMMON

**Supreme Court**  
STATE OF LOUISIANA  
New Orleans

301 LOYOLA AVE., 70112  
TELEPHONE 504-568-5707

March 1, 1983

To the Members of the Supreme Court of Louisiana  
To the Members of the Board of Governors of the  
Louisiana State Bar Association

Sirs and Brothers:

Here is the "complete detailed report" of the Judicial Council, as required each year. The work of the courts and the court-related agencies is illustrated by the statistical reports and the summaries of activities.

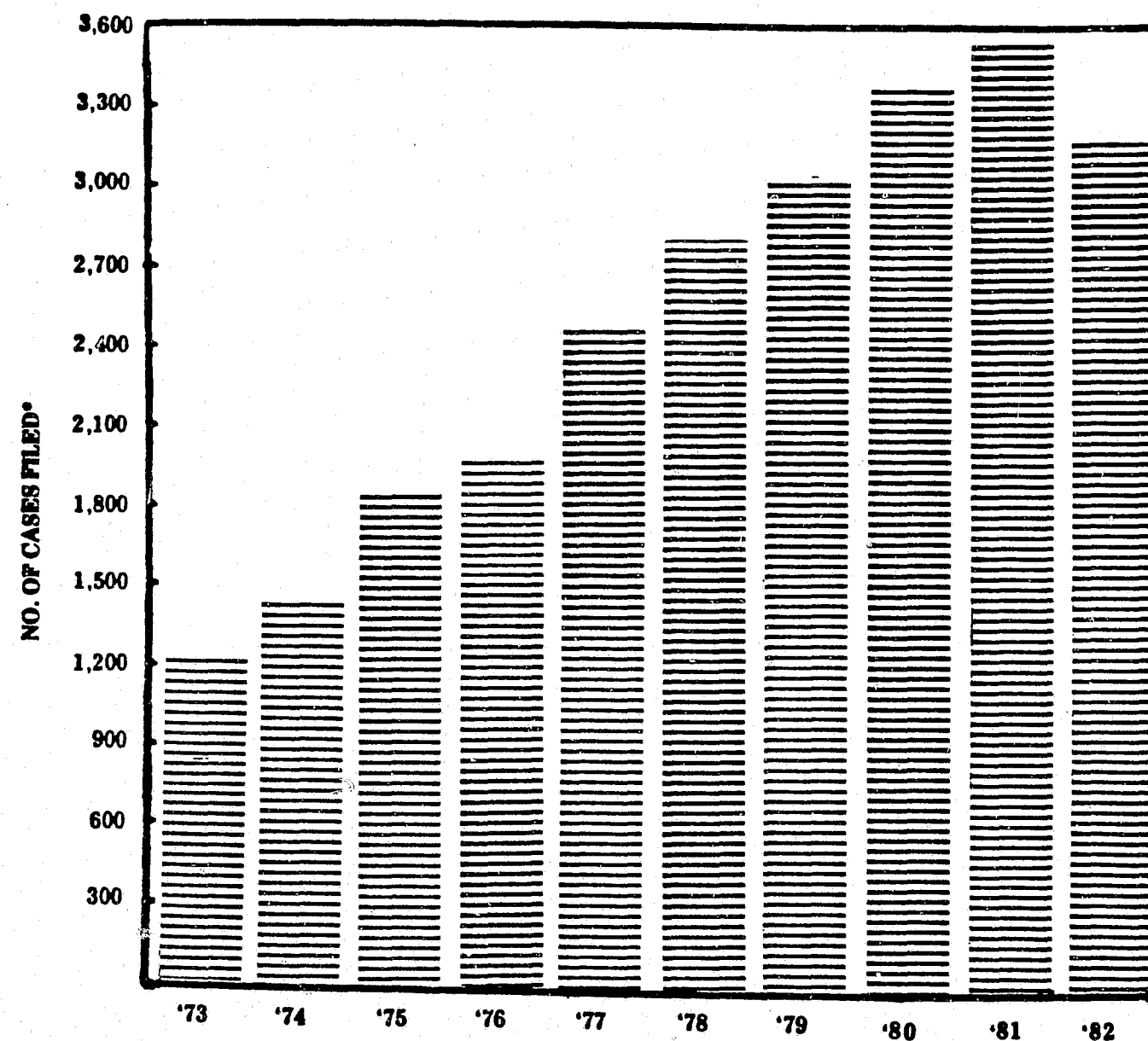
These reports can be of assistance in planning for the future. Our hope is to develop a system of data gathering and retrieval which will make current information available for planning purposes. In a state which grows and changes as quickly and sharply as Louisiana, the court system is continually faced with changing demands. We must be alert in our planning to the end that the legal system of the state continues to meet the demands of the times.

Sincerely,

*John A. Dixon, Jr.*  
John A. Dixon, Jr.

JADJr:CD

**SUPREME COURT OF LOUISIANA**  
**TEN YEAR FILING TREND**  
(1973 - 1982)



\*See Statistical Section for map and additional data.

# THE SUPREME COURT OF LOUISIANA

## CHIEF JUSTICE JOHN A. DIXON, JR.

Justice Dixon is elected from the Second Supreme Court District comprised of the following parishes: **BIENVILLE, BOSSIER, CADDO, CLAIBORNE, DESOTO, NATCHITOCHES, RED RIVER, SABINE, VERNON, WEBSTER, AND WINN.**

## ASSOCIATE JUSTICE PASCAL F. CALOGERO, JR.

Justice Calogero is elected from the First Supreme Court District comprised of the following parishes: **JEFFERSON, ORLEANS, PLAQUEMINES, AND ST. BERNARD.**

## ASSOCIATE JUSTICE JAMES L. DENNIS

Justice Dennis is elected from the Fourth Supreme Court District comprised of the following parishes: **CALDWELL, CATAHOULA, CONCORDIA, EAST CARROLL, FRANKLIN, JACKSON, LA SALLE, LINCOLN, MADISON, MOREHOUSE, OUACHITA, RICHLAND, TENSAS, UNION, AND WEST CARROLL.**

## ASSOCIATE JUSTICE JACK C. WATSON

Justice Watson is elected from the Third Supreme Court District comprised of the following parishes: **ACADIA, ALLEN, AVOYELLES, BEAUREGARD, CALCASIEU, CAMERON, EVANGELINE, GRANT, JEFFERSON DAVIS, LAFAYETTE, AND RAPIDES.**

CLERK OF COURT  
THE HONORABLE  
FRANS J. LABRANCHE, JR.

## ASSOCIATE JUSTICE WALTER F. MARCUS, JR.

Justice Marcus is elected from the First Supreme Court District comprised of the following parishes: **JEFFERSON, ORLEANS, PLAQUEMINES, AND ST. BERNARD.**

## ASSOCIATE JUSTICE FRED A. BLANCHE, JR.

Justice Blanche is elected from the Fifth Supreme Court District comprised of the following parishes: **EAST BATON ROUGE, EAST FELICIANA, IBERVILLE, LIVINGSTON, POINT COUPEE, ST. HELENA, ST LANDRY, ST. TAMMANY, TANGIPAHOA, WASHINGTON, WEST BATON ROUGE, and WEST FELICIANA.**

## ASSOCIATE JUSTICE HARRY T. LEMMON

Justice Lemmon is elected from the Sixth Supreme Court District comprised of the following parishes: **ASCENSION, ASSUMPTION, IBERIA, LAFOURCHE, ST. CHARLES, ST. JAMES, ST. JOHN THE BAPTIST, ST. MARY, ST. MARTIN, TERREBONNE, AND VERMILION.**

# THE CHIEF JUSTICE AND ASSOCIATE JUSTICES OF THE LOUISIANA SUPREME COURT



Seated: (Left to Right)

Associate Justice Pascal F. Calogero, Jr., Chief Justice John A. Dixon, Jr., Associate Justice Walter F. Marcus, Jr.

Standing: (Left to Right)

Associate Justice Jack Crozier Watson, Associate Justice James L. Dennis, Associate Justice Fred A. Blanche, Jr., and Associate Justice Harry T. Lemmon.

# THE JUDICIAL COUNCIL

## Five new Judgeships created . . . District will split . . .

Following the recommendations of the Judicial Council of the Supreme Court of Louisiana, the 1982 Louisiana Legislature created five new judgeships.

One judgeship each was created for the 1st. Judicial District Court, Caddo Parish; the 15th Judicial District Court, Acadia, Lafayette and Vermilion Parishes; the 18th Judicial District Court, Iberville, W. Baton Rouge and Pointe Coupee Parishes; the 23rd Judicial District Court, Assumption, St. James and Ascension Parishes; and the 27th Judicial District Court, Caldwell Parish.

Additionally, the split of the 29th Judicial District Court, St. Charles and St. John Parishes, was authorized by the legislature. This split was subject to referendum by the people of the district and passed in both parishes on January 15, 1983. The split in the District will not be effective until January 1, 1985.

All recommendations of the Council relative to new judgeships were made after investigation by the office of the Judicial Administrator and evaluation by the Committee to Evaluate Requests for New Judgeships, chaired by Judge Thomas Tanner.

## Trial Courts Committee appointed . . . . Deadline changes . . . Joint Legislative Committee formed . . . .

In other action, the council passed a motion in support of an Attorney General opinion which gave city courts the authority to allow payment of the same compensation to witnesses that is presently being paid by district courts; authorized creation of a Trial Courts Statistics Committee; and changed the deadline for receipt by the Judicial Administrator's office of requests for new judgeships from January 1, to November 1, each year. The Council also voted to ask the legislature to defer action on a proposal to create a Court of Appeal Coordinating Council, served by a Judicial Administrator for the Courts of Appeal, until the matter could be studied. A joint legislative committee has been appointed to do this.

## Subcommittees study, plan, implement . . .

The Courts and Community Relations Subcommittee chaired by Bogalusa Attorney Richard F. Knight is studying the manner in which juries are selected and managed in the state and is now working to develop a model juror's handbook along with other related material for use in jury management.

The Financing and Facilities of the Louisiana Courts, Subcommittee, chaired by Judge Guy E. Humphries, introduced legislation calling for direct funding by the legislature of each judge's court reporter, secretary and law clerk. Due to the financial

short fall which the state encountered last year, this legislation failed.

The Juvenile Courts Subcommittee, Chaired by Judge Salvatore Mule, is studying the feasibility of a statewide system of regional juvenile courts and of the possibility of providing services to juveniles on a regional basis. This subcommittee is also working with the Judicial College on the preparation of a juvenile benchbook and gearing up to develop a uniform state statistical system for the juvenile courts. This latter project is being done in cooperation with the Trial Courts Statistics Committee.

The Science and Technology in the Courts Subcommittee has surveyed the types of electronic systems currently being used by the courts of Louisiana. This information was collated by Ronald Stritzinger, a Deputy Judicial Administrator, who serves as staff to the committee. Stritzinger is available to give technical assistance to all of the courts. Additionally, the Subcommittee has inaugurated a continuing education program on technology for the courts.

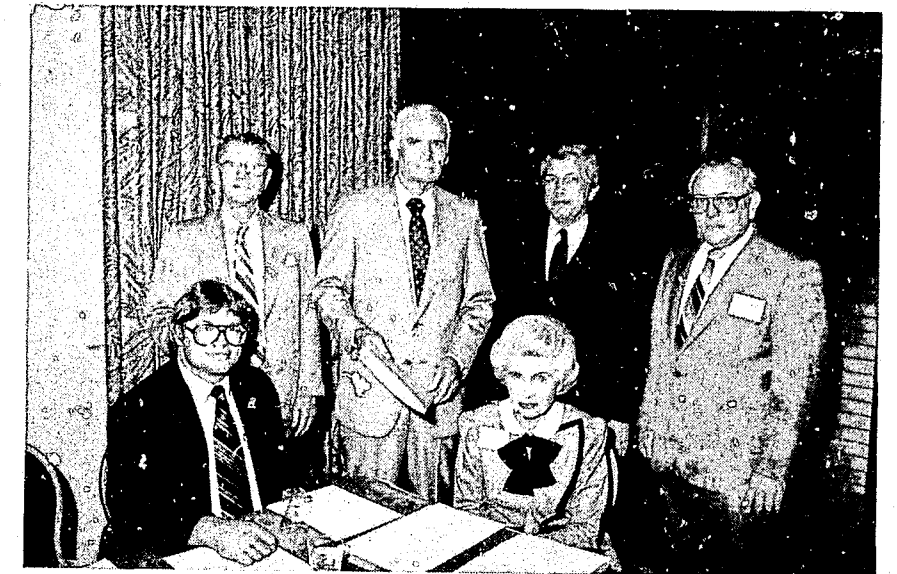
The Long Range Planning Subcommittee, chaired by Judge Patrick M. Schott, has surveyed the judges and clerks of courts of the State to ascertain the priority problems facing the Judicial System for use as a guide in determining future activities of the Subcommittee. The Subcommittee also reviewed the data concerning delinquent appeals in the state and has recommended that legislation be passed to upgrade the court reporting system in the state. The Subcommittee also recommends that steps be taken to increase compliance on the part of lawyers and clerks with the time requirements for sending notices of the costs in appeals and for paying those costs.

The Judicial Council of the Supreme Court of Louisiana was established in 1950 and received its first funding by the state legislature in 1954. Its task is to evaluate and monitor the operations and procedures of the judicial system of the state. In this capacity, it serves as a clearinghouse for ideas for simplifying and for expediting judicial procedures and/or correcting shortcomings in the system.

<b>NON-VOTING</b>	
Honorable J. Cleveland Fruge, Retired Third Circuit Court of Appeal-Secretary	Honorable Fred A. Blanche, Jr., Associate Justice, Supreme Court of Louisiana
<b>EX-OFFICIO</b>	Honorable Jack Watson Associate Justice, Supreme Court of Louisiana
Honorable Walter F. Marcus, Jr., Associate Justice, Supreme Court of Louisiana	Honorable Harry T. Lemmon Associate Justice, Supreme Court of Louisiana
Honorable James L. Dennis Associate Justice, Supreme Court of Louisiana	<b>STAFF</b>
	Mr. Eugene J. Murret Judicial Administrator

## MEMBERSHIP OF THE JUDICIAL COUNCIL

Left to Right -- Standing: M. Truman Woodward, Jr., Esquire, representing Louisiana State Law Institute; Judge O. E. Price, representing the Conference of Court of Appeal Judges; Honorable Joseph Accardo, Jr., State Senator; Judge Edwin R. Hughes, representing Louisiana District Judges Association. Seated: Ben Richard Hanchey, Esquire, representing Young Lawyers Section, Louisiana State Bar Association; Mrs. Martha E. McCrory, citizen representative.



Left to right -- Judge Salvador T. Mule, representing Louisiana Council of Juvenile Court Judges; Judge Leon Ford, III, representing Louisiana Council of Juvenile Court Judges; Judge Richard H. Gauthier, representing Louisiana District Judges Association; Judge John A. Rogers, representing Louisiana City Court Judges Association; Chief Justice John A. Dixon, Chairman of the Judicial Council.

Left to right -- Standing: J. Nathan Stansbury, representing Louisiana District Attorneys Association; J. Andrus Barousse, representing Louisiana Clerks of Court Association; Lawrence B. Sandoz, Jr., Esquire, representing Louisiana State Bar Association; Seated: Eugene J. Murret, Judicial Administrator, Staff; Honorable Thomas A. Casey, State Senator; Judge Cleveland J. Fruge, Retired, Secretary of the Judicial Council.



Missing From Pictures:  
Associate Justice Pascal F. Calogero, Jr. Louisiana Supreme Court; Samuel C. Galsburgh, representing Louisiana State Bar Association; Judge Frederick S. Ellis representing Conference of Court of Appeal Judges.

# The Judicial Administrator Reports

## Workloads increase . . . . Budgets decrease . . . .

During the last five years, the work load of the Louisiana courts has grown by 34 percent. In order to meet this rapid growth during a period of tight budgets, courts at all levels are working harder and more efficiently than ever before. This effort to increase efficiency manifested itself during 1982 in the increased use of automation, development of improved management statistics, and efforts to make up for the lack of needed resources by using innovative management approaches to operating the courts.

## Effects of the transfer of Criminal Appellate Jurisdiction on the Supreme Court is studied . . . .

In the Supreme Court, the first effects of the constitutional amendment giving criminal jurisdiction to the courts of appeal were felt during the second half of 1982. Because hundreds of cases had been filed in the Supreme Court prior to the transfer of jurisdiction on July 1st, it will be many months before the Supreme Court work load decreases. However, in preparation for the time when the full effects of the constitutional amendment are felt, the Supreme Court has commissioned a management study to enable it to reorganize its staff and update its procedures to handle its new case load.

## Courts of Appeal streamline . . . . utilize technology . . .

The courts of appeal are facing increased civil filings and have taken on criminal jurisdiction. They have moved to meet this challenge by exploring applications of advanced court technology, developing new rules of court, and by vigorously scrutinizing every phase of their operations. In addition, a subcommittee of the Judicial Council chaired by Judge Patrick M. Schott of the Fourth Circuit Court of Appeal is studying the appellate case flow and the standards applicable to court reporters (who form a vital link in the appellate process). Judge Schott's committee hopes to update the procedural law affecting the flow of appellate cases and to improve the performance of court reporters in Louisiana courts.

District, parish and city courts have experienced dramatic increases in their case loads. They have attempted to meet this challenge not by asking for large numbers of new judges but by working more efficiently. Based upon growth in case loads, the district courts could have sought more judgeships during 1982 under



**EUGENE J. MURRET**  
Judicial Administrator

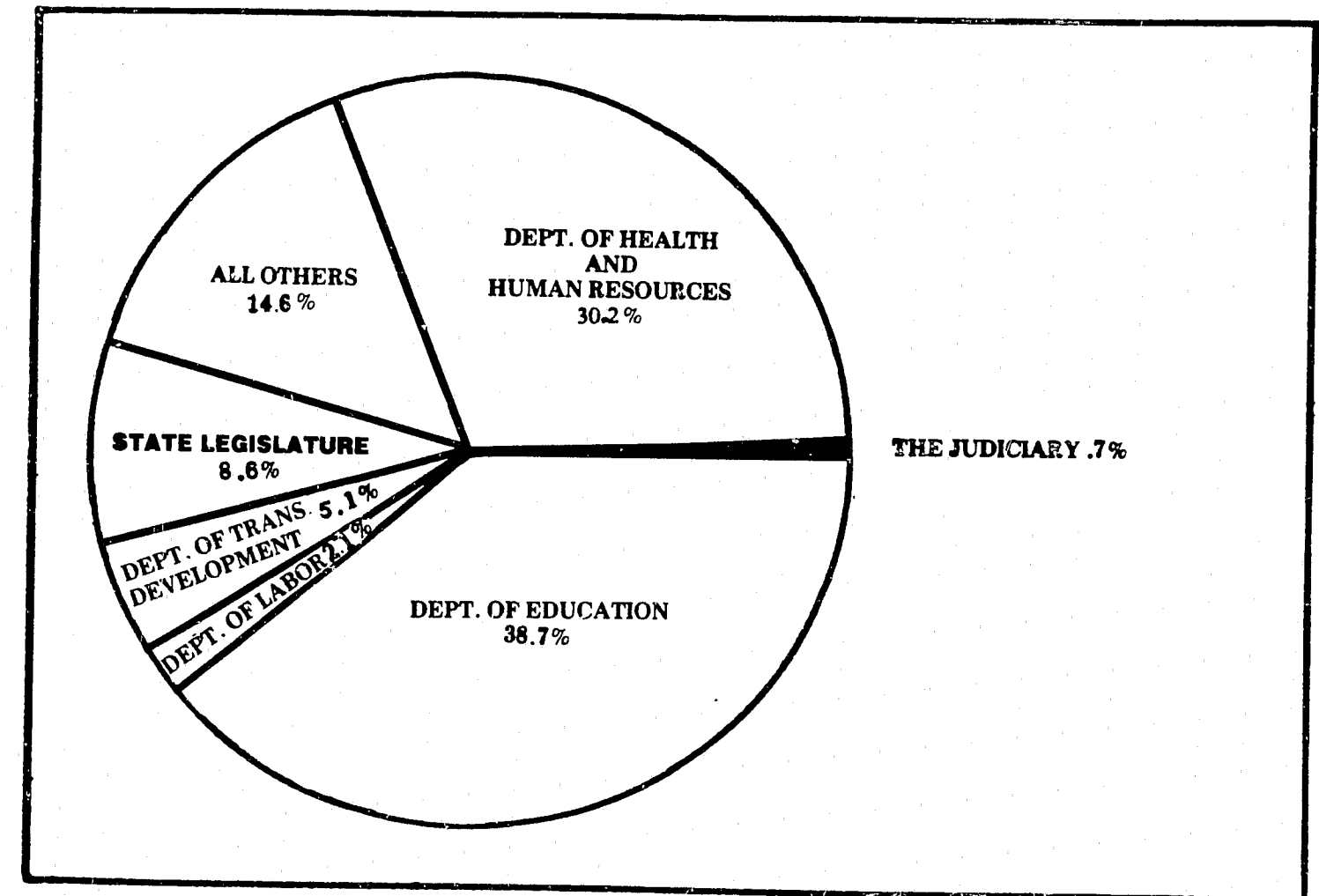
existing criteria than the five requested. While case load growth has not been as critical in the parish and city courts, the increase has still been dramatic. It is interesting to note that only two new parish and city court judgeships have been created during the last five years.

## Improved management techniques and automation help to cope with increased caseload in District, Parish, and City Courts . . . .

More and more district, parish and city courts are automating their operations in an attempt to reduce costs. In addition, new management statistical reports were developed for the district courts in 1982. It is expected that these reports will allow the courts to make better use of their current personnel. Similar forms will be developed for the city courts during 1983.

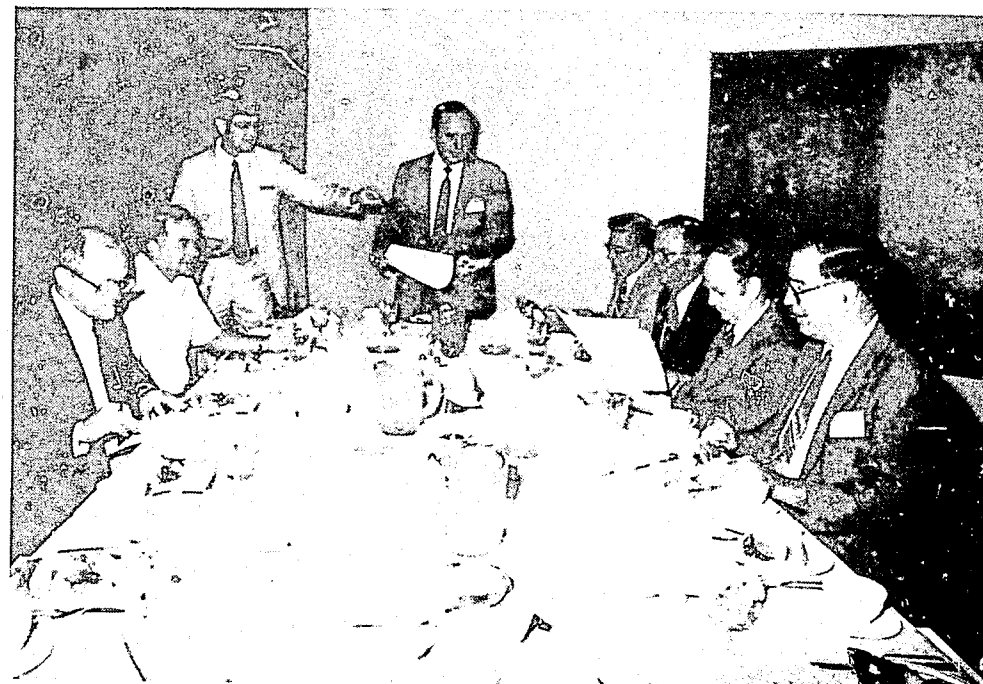
One interesting example of the efforts being made by the courts to improve their operations while keeping costs down is the successful program undertaken to speed up the flow of criminal appeals. The flow of criminal appeals is monitored by the Court of Appeals Reporting Systems (CARS) in my office. Once CARS indicates that a court reporter has fallen behind or will soon be overloaded with work, the judge and the court reporter in question are called to alert them to the problem. If the court reporter has so much work that he or she cannot catch up, a reporter from the Supreme court reporter pool is dispatched to the district to assist until the backlog is cleared up. Not only has the flow of criminal appeals been dramatically speeded up, but significant savings have been achieved by creating a central pool of reporters rather than hiring a relief reporter for every court in the state. This innovative program is just one example of how hard work and innovative management techniques are improving our courts.

# STATE BUDGET Fiscal Year 1982 - 1983





# LOUISIANA JUDICIAL COLLEGE 1982 ANNUAL REPORT



Left to Right--Judge Gerald P. Fedoroff, Judge Pike Hall, Jr., Professor Winston Day, Justice Harry T. Lemmon, Judge E. L. Guidry, Jr., Judge Thomas C. Wicker, Jr., Henry B. Alsobrook, Jr., Esquire and Mr. Eugene J. Murret, Judicial Administrator.

Missing from the picture are: Judge Elvis C. Stout, Judge C. William Roberts, Senator Nat G. Kiefer, Representative Huntington B. Downer, Jr., and Mr. Edgar G. Mouton.

In 1982 the Louisiana Judicial College continued its goal of improving and increasing judicial education on the state level through seminar's and meetings held throughout the year.

Aside from the annual Spring and Fall meetings of the Louisiana Council of Juvenile Courts, the Louisiana City Court Judges Association, the Louisiana Conference of the Court of Appeal Judges, and the District Judges Association, the Judicial College sponsored several additional seminars.

In February, the College sponsored a seminar on "Strict" Liability for all members of the Louisiana Judiciary. The conceptual framework, practical problems and potential future development and limitations of Louisiana's unique form of "strict" liability were the focus of this intensive seminar. Presentations were made by leading members of the

legal profession including Associate Justice James L. Dennis; Professor Alston Johnson, III, and Professor Frank Mariaist, both from the Louisiana State University School of Law; and Herschel Richard and David Robinson, Attorneys at Law.

In June, the College held a special two day seminar to assist new judges in meeting the challenges of their positions.

The beginning of August brought about the annual seminar for all Court of Appeal and District Court law clerks. The program included sessions on "The Judicial Process" presented by Judge Morris A. Lottinger, Jr. of the 1st Circuit Court of Appeal, Judge John W. Green and Court Administrator Robert Tyler of the 22nd Judicial District Court. The "Opinion Writing" session was presented by Judge Jasper E. Jones, 2nd Circuit Court of Appeal. Following this presentation a

special writing program was conducted by a group of nationally known experts from the University of Maryland. Also featured was Judge C. Thomas Wicker, Jr., 24th Judicial District Court who spoke on "Ethical Considerations for Law Clerks." The seminar was concluded by a "Roundtable: Perspectives from Former Clerks."

A shortcourse in Louisiana Criminal Law and Procedure was sponsored by the College at the end of August. The seminar topics touched on all areas of Criminal Law and Procedure, such as; Substantive Criminal Law, Search and Seizure, Arrest, Pre-trial Rights, Working with a Central Staff, Institution of Proceedings, Appeals and Supervisory Writs, Opinion Writing in Criminal Cases, Joinder, Severance Arraignments and Guilty Pleas, Pre-trial Motions and Proceedings, U. S. Supreme Court Decisions - The Recent Term, Problems at Trial, Sentencing and Post-Conviction Remedies and Procedures. The faculty arranged for this course included top experts from throughout the state and nation.

The College is presently undertaking the publication of a Benchbook for judges of courts of limited and special jurisdiction. It is envisioned as a source book of information which will be of practical value to judges in their daily work. The project was suggested by Judge Darrell D. White of Baton Rouge City Court, Chairman of the Advisory Committee which will plan and format the book and direct the work of Judicial College research assistants.

Under Executive Director Winston R. Day, the College has expanded with new programs to facilitate improvement of the judicial system. One of these is a newsletter entitled Criminal Law and Procedure. This newsletter is written entirely by student research assistants for the purpose of updating judges on criminal procedure. The newsletter is published and mailed to all members of the judiciary every two to three weeks.

*This report was prepared by Nancy Orr,  
Louisiana Judicial College Staff.*

## THE BOARD OF GOVERNORS OF THE LOUISIANA JUDICIAL COLLEGE

The Judges serving on the board are:

Justice Harry T. Lemmon, New Orleans, Louisiana, Chairman  
Honorable Elvis C. Stout, Monroe, Louisiana  
Honorable Thomas C. Wicker, Jr., Gretna, Louisiana  
Honorable C. William Roberts, Baton Rouge, Louisiana  
Honorable E. L. Guidry, Jr., St. Martinville, Louisiana  
Honorable Gerald P. Fedoroff, New Orleans, Louisiana  
Honorable Pike Hall, Jr., Shreveport, Louisiana

The remaining members of the board are:

The President of the Louisiana State Bar Association (presently  
Henry B. Alsobrook, Jr., New Orleans, Louisiana)  
The Governor or his representative  
One state representative appointed by the Governor  
One state senator appointed by the Governor  
The Judicial Administrator, Eugene J. Murret, serves as the  
Board's secretary.



## THE JUDICIARY COMMISSION OF LOUISIANA 1982 ANNUAL REPORT

The Judiciary Commission of Louisiana, created in 1968 by an amendment to Article IX, Constitution of 1921, is continued in existence by Article V, Section 25, Constitution of 1974.

### Powers

On recommendation of the Judiciary Commission, the Supreme Court may censure, suspend with or without salary, remove from office, or involuntarily retire a judge for willful misconduct relating to his official duty, willful and persistent failure to perform his duty, persistent and public conduct prejudicial to the administration of justice that brings the judicial office into disrepute, and conduct while in office which would constitute a felony, or conviction of a felony.

On recommendation of the Judiciary Commission, the Supreme Court may disqualify a judge from exercising any judicial function, without loss of salary, during pendency of disciplinary proceedings in the Supreme Court.

On recommendation of the Judiciary Commission, the Supreme Court may retire involuntarily a judge for disability that seriously interferes with the performance of his duties and that is or is likely to become permanent.

The Commission's jurisdiction includes justice and judges of all courts of this state, including commissioners, magistrates, and justices of the peace.

### Confidentiality

In accordance with Rule XXIII, Section 23, of the Rules of the Supreme Court, all documents filed with, and evidence and proceedings before the Commission are confidential unless and until the Commission files a recommendation for discipline or retirement with the Supreme Court. The record filed by the Commission with the Supreme Court and proceedings before the Supreme Court are not confidential. Once a recommendation is filed with the Supreme Court, it becomes public as any other case before the Court.

### Membership

The Commission consists of nine members who shall serve four-year terms: one court of appeal judge and two district judges selected by the Supreme Court; two attorneys admitted to the practice of law for at least ten years and one attorney admitted to the practice of law for at least three but not more than ten years, selected by the Conference of Court of Appeal judges; and three citizens, not lawyers, judges, or public officials, selected by the Louisiana District Judges Association.

Membership of the Judiciary Commission as of December 31, 1982:

Judge Robert T. Farr, Chairman  
William J. Childress, Vice-Chairman  
Don J. Dupepe, Esquire  
Bertrand N. Sweeney, Jr.  
Judge L. Julian Samuel  
Richard F. Knight, Esquire

W. W. McDougall  
Sidney E. Cook, Esquire  
Judge Thomas C. Wicker, Jr.

Eugene J. Murret, Chief Executive Officer  
Dr. Hugh M. Collins, Deputy Chief Executive Officer

### Complaints

During the year 1982 the Commission received 36 complaints against judges, and 13 complaints were pending from 1981. These complaints included serving in judicial office beyond the mandatory retirement age; allegations of conflict of interest; prejudice against complainants; physical and mental disability; violations of Canon 2 "A Judge Should Avoid Impropriety and the Appearance of Impropriety in All His Activities;" misconduct in exercising judicial discretion; misuse of judicial office, among others, and were filed by litigants, interested citizens, and by the Commission's own motion.

### Dispositions

During the year 1982 the Commission disposed of 44 complaints and 5 cases are still pending at the beginning of 1983. These complaints were either closed because of insufficient evidence of judicial misconduct or otherwise resolved to the satisfaction of the Commission; 15 formal investigations were ordered and conducted; 2 formal hearings were held, and one recommendation for involuntary retirement was filed with the Supreme Court.

*Editor's Note: Complaints may be made to the office of the Chief Executive Officer of the Commission, Eugene J. Murret, 109 Supreme Court Building, New Orleans, Louisiana 70112, Telephone: (504) 568-5747.*

## ANNUAL REPORT OF THE LAW LIBRARY OF LOUISIANA 1982

*A report by Carol Billings, Head Librarian*

The challenge of operating a successful law library involves striking a balance between steadiness and innovation. While maintaining a reliable, up-to-date collection and providing prompt, unstinting service, the staff must learn about and introduce new materials, technology and methods to make the library grow and improve. Performing this feat, particularly in a period of severe budgetary restraint, is difficult at best.

The chronicle of library activities for 1982 reflects a combination of regular progress, financial restrictions and exciting new developments. Inexorably the daily mail bags and cartons brought not only over 700 bound volumes worth of brand new titles, but also nearly 3,000 complete volumes of continuations, not counting loose-leaf supplements and pocket parts. Close to 1,600 volumes worth of microfiches, including 148 new titles, arrived. The total collection now numbers nearly 112,000 volumes. The financial statistics for the end of the 1981/82 fiscal year in June revealed that of more than \$196,000 spent on books and microfiches, 93 percent, over \$183,000, was required just for supplementation and upkeep of the existing collection. Less than \$14,000 remained for new titles. The October executive order requiring a 4.4 percent decrease in state agency budgets deducted \$16,000 from the 1982/83 book budget, thus necessitating numerous cancellations of subscriptions for continuations.

On the brighter side, 1982 was the first full year of the library's participation in the OCLC automated cataloging system. Over 1,100 items were cataloged using the online system. These included 637 new books and periodicals and 532 retrospective items already in the collection. Of this last group, all state reports and session laws and the library's collection of Canadian materials have now been fully cataloged. The online union catalog, which represents the input of hundreds of libraries nation-wide as well as the Library of Congress, also provided information for requesting interlibrary loans of materials not in our collection.

Cataloging procedure was further streamlined this year by the addition of a high speed printer connected to the OCLC terminal. This has eliminated the need for much time-consuming manual copying and typing and also provides a hard-copy bibliographic record of materials found in the system.

Another forward-looking step was the acquisition of a number of important sets of primary source materials in microformat. This form of publication is ideal for voluminous, fast-growing collections because it saves both space and money. Current subscriptions are now in effect for both the legislative acts and attorney general opinions of all 50 states and for the Records and Briefs of the U.S. Supreme Court. In the spring the library became a member of the Law Library Microform Consortium, a non-profit corporation dedicated to the production of low-cost microform materials essential to the legal profession. Through the consortium the library purchased 341 volumes -- some to fill gaps in previously-owned titles and some totally new to the collection. Among the items are the **Decisions of the U.S. Copyright Office, The Journals of**



*Keeping the reading room in order are law library staff members D. Thompson, Betty Kern, Bill Luster, Carol Billings, Patsy Brautigam and Sarah Churney. David Laurent was not present for the picture.*

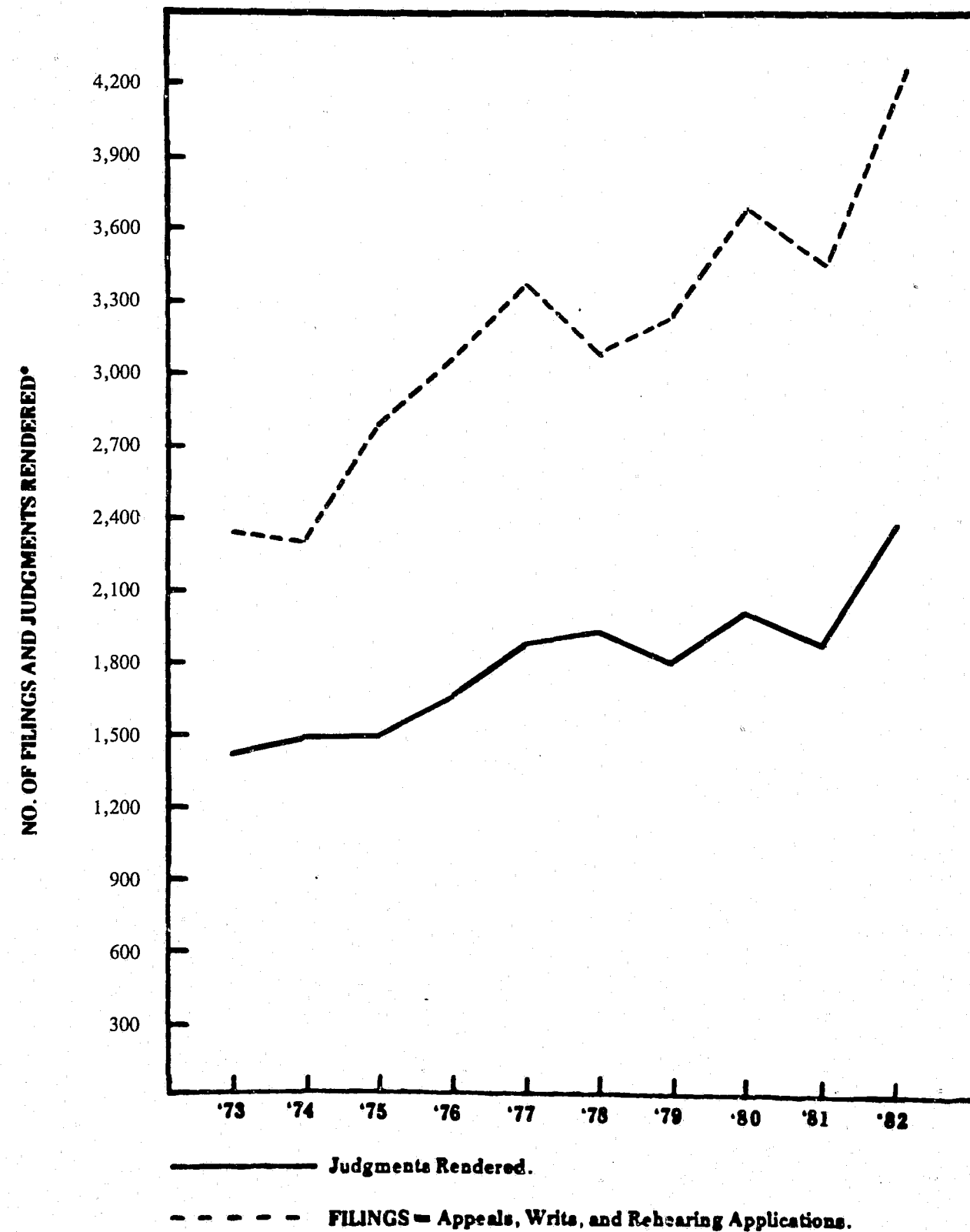
**the Continental Congress, The Annual Reports of the Attorney General of the U.S., Treaties and Other International Agreements of the U.S., The Department of State Bulletin, Uniform Crime Reports from the U.S. Department of Justice, and The Reports of the Office of the Administrator of the U.S. Courts.**

One of the most welcome events of the year was the arrival of the new Wang computer terminal and printer. The equipment is a boon to the staff as a word processor, streamlining a number of typing jobs related to ordering books and subscriptions, editing administrative reports, corresponding with patrons and other libraries, and preparing bibliographies. Because the equipment also possesses data processing capability, it will allow the library eventually to automate a number of clumsy, time-consuming procedures. When "software" has been developed by the Court's data processing experts, we hope to check-in new issues of periodicals, up-dates for loose-leaf publications, pocket parts and supplements "on-line." the by-products of such a system would be extremely valuable. Lists of the library's periodical holdings could be sent not only to other libraries, but also to all parish courthouses, judges' offices, and out of town attorneys.

One of the most exciting developments for the library in '82--and potentially the most helpful--was the founding of the Friends of the Law Library of Louisiana. With the support of Chief Justice Dixon, Justice Dennis, Justice Blanche, Eugene Murret, Paulette Holahan and Dr. Hugh Collins, the library staff assembled a steering committee of judges and attorneys to launch the new organization. It is the purpose of the Friends to facilitate communications between the library staff and its clientele throughout the state. Efforts are underway to publicize the goals of the Friends, and the membership campaign is beginning to bear fruit. As soon as enough funds have accumulated, the Friends plan to finance the installation of a Westlaw computerized local research system, accessible not only to judges, but also to attorneys on a "pay-by-the-minute" basis. Contributions will also be earmarked for the purchase of new titles and continuations for the library collection and for restoring deteriorating rare books. Eventually the Friends hope to promote the expansion and improvement of law library service throughout Louisiana by helping to establish or augment parish law libraries.

# LOUISIANA COURTS OF APPEAL

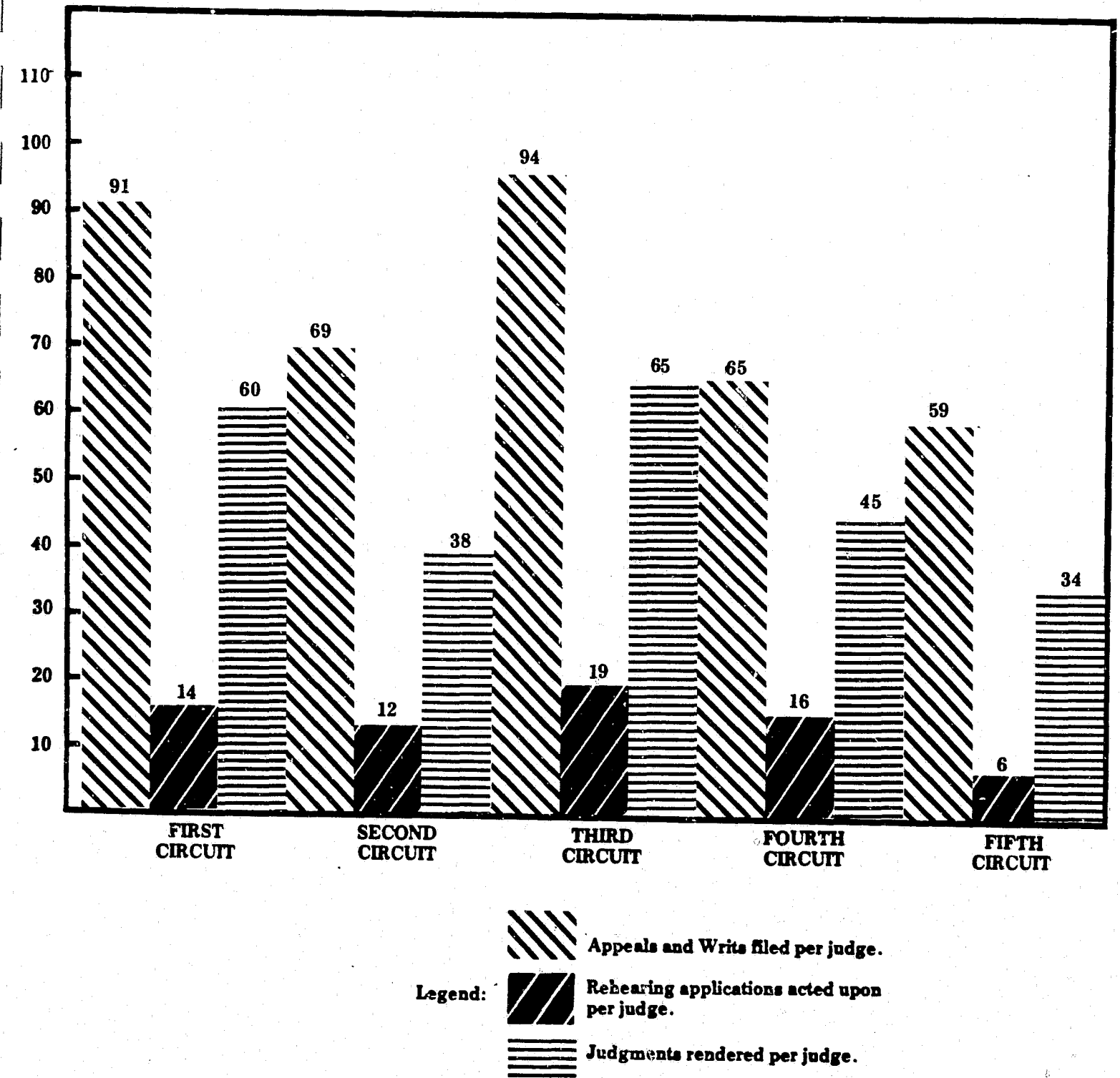
## Growth of Filings and Judgements Rendered



\*See Statistical Section for map and additional data.

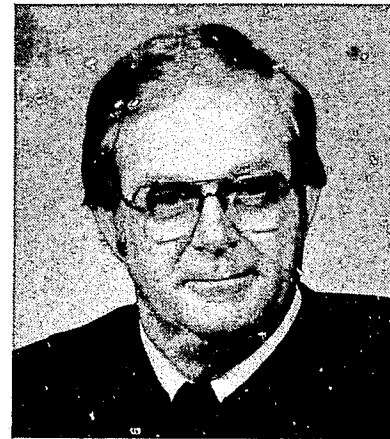
# LOUISIANA COURTS OF APPEAL

## Workload Comparison\*



\*See Statistical Section for map and additional data.

**THE LOUISIANA COURTS OF APPEAL**  
**Roster of Judges and Clerks**



Chief Judge Grover L. Covington

Judges	Domicile	District
<b>FIRST CIRCUIT (Baton Rouge)</b>		
Frederick S. Ellis, Chief Judge <sup>1</sup>	Covington	Third
Grover L. Covington <sup>2</sup>	Hammond	Third
Morris A. Lottinger, Jr.	Houma	First
Remy Chiasson <sup>3</sup>	Thibodaux	First
Walter I. Lanier, Jr. <sup>4</sup>	Thibodaux	First
Wallace A. Edwards	Covington	Third
Elven E. Ponder	Baton Rouge	Second
Elmo E. Lear <sup>5</sup>	Baton Rouge	Second
Luther F. Cole	Baton Rouge	Second
J. Louis Watkins, Jr.	Houma	First
Melvin A. Shortess	Baton Rouge	Second
Burrell J. Carter	Greensburg	Third
Felix H. Savoie, Jr.	Belle Rose	First
Hillary J. Crain <sup>6</sup>	Bogalusa	Third
Steve A. Alford, Jr. <sup>7</sup>	Baton Rouge	Second

Clerk: Edward C. Seghers



Chief Judge O. E. Price

<b>SECOND CIRCUIT (Shreveport)</b>		
O. E. Price, Chief Judge	Bossier City	At Large
Pike Hall, Jr.	Shreveport	Third
Charles A. Marvin	Minden	Second
Jasper E. Jones	Shreveport	First
Fred W. Jones, Jr.	Ruston	At Large
Fred C. Sexton, Jr.	Shreveport	Third
William Norris, III	West Monroe	First

Clerk: Bob W. Schulman



Chief Judge W. A. Culpepper

<b>THIRD CIRCUIT (Lake Charles)</b>		
W. A. Culpepper, Chief Judge <sup>8</sup>	Alexandria	First
Jerome E. Domengeaux <sup>9</sup>	Lafayette	At Large
Edmond L. Guidry, Jr.	St. Martinville	Third
J. Burton Foret	Ville Platte	At Large
Cecil C. Cutrer	Lake Charles	Second
C. William Swift, Jr. <sup>10</sup>	Lake Charles	Second
Henry L. Yelverton <sup>11</sup>	Lake Charles	Second
Jimmy M. Stoker	Alexandria	First
Ned Doucet, Jr.	Abbeville	Third
P. J. Laborde	Marksville	At Large
Jeannette Knoll <sup>12</sup>	Marksville	First

Clerk: Kenneth J. deBlanc

1. Retired September 1, 1982.

2. Became Chief Judge September 1, 1982.

3. Retired January 14, 1982.

4. Took Office March 17, 1982.

5. Retired on December 31, 1982.

6. Took Office November 12, 1982.

7. Took Office January 1, 1983.

8. Retired on December 31, 1982.

9. Became Chief Judge January 1, 1983.

10. Retired March 31, 1982.

11. Took Office January 10, 1982.

12. Took Office January 1, 1983.

**THE LOUISIANA COURTS OF APPEAL**  
**Roster of Judges and Clerks**



Chief Judge William V. Redmann

Judges	Domicile	District
<b>FOURTH CIRCUIT (New Orleans) January 1, 1982 to April 30, 1982</b>		
L. Julian Samuel, Chief Judge <sup>1</sup>	Gretna	First
William V. Redmann	New Orleans	Second
Thomas J. Kliebert <sup>1</sup>	Paulina	Third
James C. Gulotta	New Orleans	Second
John C. Boutall <sup>1</sup>	Metairie	First
Patrick M. Schott	New Orleans	Second
Denis A. Barry	New Orleans	Second
Jim Garrison	New Orleans	Second
Lawrence A. Chehardy <sup>1</sup>	Metairie	First
Robert J. Klees	Mereaux	Third
Charles R. Ward	New Orleans	Second
Israel M. Augustine	New Orleans	Second
William H. Byrnes, III	New Orleans	2nd, 4th, 5th
Philip C. Ciaccio	New Orleans	2nd, 4th, 5th
Robert L. Lobrano	Belle Chasse	Fifth
David R. M. Williams	New Orleans	Second

Clerk: Majorie R. Cambre

<b>FOURTH CIRCUIT (New Orleans) Effective May 1, 1982</b>		
William V. Redmann, Chief Judge	New Orleans	First
James C. Gulotta	New Orleans	First
Patrick M. Schott	New Orleans	First
Denis A. Barry	New Orleans	First
Jim Garrison	New Orleans	First
Robert J. Klees	Mereaux	Third
Charles R. Ward	New Orleans	First
Israel M. Augustine	New Orleans	First
William H. Byrnes, III	New Orleans	At Large
Philip C. Ciaccio	New Orleans	At Large
Robert L. Lobrano	Belle Chasse	Second
David R. M. Williams	New Orleans	First

Clerk: Majorie R. Cambre

<b>FIFTH CIRCUIT (Gretna) Effective May 1, 1982</b>		
L. Julian Samuel, Chief Judge <sup>1</sup>	Gretna	First
Thomas J. Kliebert	Paulina	Second
John C. Boutall <sup>2</sup>	Metairie	First
Lawrence A. Chehardy	Metairie	First
Charles Grisbaum, Jr. <sup>3</sup>	Gretna	First
H. Charles Gaudin <sup>3</sup>	Metairie	First
Fred S. Bowes <sup>3</sup>	Gretna	First
Edward A. Dufresne, Jr. <sup>3</sup>	Luling	Third
Nestor L. Currault, Jr. <sup>3</sup>	Gretna	First

Clerk: Answard P. Theriot

1. Retired December 31, 1982.

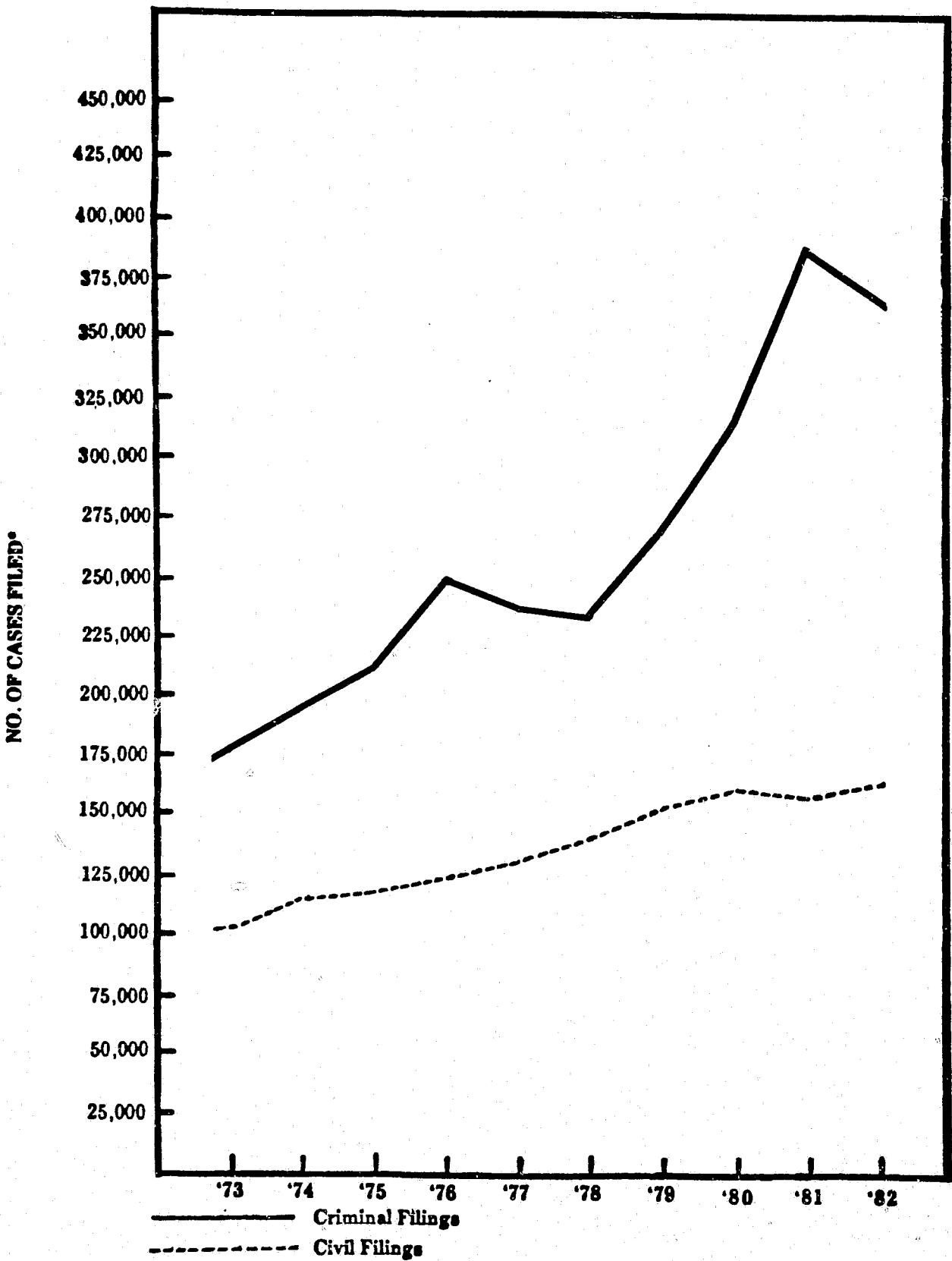
2. Became Chief Judge January 1, 1983.

3. Became Circuit Court Judge May 1, 1982.



# LOUISIANA DISTRICT COURTS

## Growth of Civil and Criminal Case Filings



\*See Statistical Section for map and additional data.

### DISTRICT COURTS OF LOUISIANA

#### Roster of Judges and Clerks

Judges	Parishes Within District	Parish Seats	Clerks Of Court
FIRST DISTRICT			
James E. Clark, Chief Judge C. J. Bolin, Jr. John R. Ballard Gayle K. Hamilton Charles R. Lindsay Eugene W. Bryson Paul Lynch <sup>1</sup> Jeffrey P. Victory Charles Scott <sup>2</sup>	Caddo	Shreveport	W. Orie Hunter, Jr.
Caddo Parish Juvenile Court Gorman E. Taylor, Chief Judge Andrew B. Gallagher			
Court Administrator: Thomas M. Williams			
SECOND DISTRICT			
David T. Caldwell, Chief Judge <sup>3</sup> Paul A. Newell <sup>4</sup> Robert Y. Butler Leon H. Whitten <sup>5</sup>	Jackson Claiborne Bienville	Jonesboro Homer Arcadia	A. B. Walsworth B. A. Gladney H. R. Sledge
THIRD DISTRICT			
O. L. Waltman, Jr., Chief Judge <sup>6</sup> James M. Dozier <sup>7</sup> E. Joseph Bleich <sup>8</sup>	Union Lincoln	Farmerville Ruston	J. A. Brantley R. N. Cobb
FOURTH DISTRICT			
Lemmie O. Hightower, Chief Judge Robert T. Farr Fred Fudickar, Jr. <sup>9</sup> John R. Joyce John R. Harrison Robert W. Kostelka <sup>10</sup>	Morehouse Ouachita	Bastrop Monroe	A. T. Goodnight B. Downey
Court Administrator: B. B. Clair Stron			
FIFTH DISTRICT			
John C. Morris, Jr., Chief Judge B. I. Berry Sonny N. Stephens	Franklin Richland West Carroll	Winnsboro Rayville Oak Grove	R. Lowe R. Haire M. N. Oldham
SIXTH DISTRICT			
Cliff C. Adams, Chief Judge Alwine M. Ragland	Madison East Carroll Tensas	Tallulah Lake Providence St. Joseph	J. K. Post, Jr. E. B. Brock J. A. Kitchen
SEVENTH DISTRICT			
Richard P. Boyd, Jr., Chief Judge W. C. Falkenheiner	Catahoula Concordia	Harrisonburg Vidalia	W. A. Book C. R. Webber, Jr.
EIGHTH DISTRICT			
Hiram J. Wright, Chief Judge	Winn	Winnfield	J. O. Anders
NINTH DISTRICT			
Jules L. Davidson, Jr., Chief Judge Robert P. Jackson Alfred A. Mansour Richard E. "Dick" Lee Lloyd G. Teekell William P. Polk	Rapides	Alexandria	R. L. Stewart

1. Died October 4, 1982.  
2. Took Office on January 1, 1983.  
3. Retired September 30, 1982.  
4. Became Chief Judge October 1, 1982.  
5. Took Office October 1, 1982.  
6. Resigned.  
7. Became Chief Judge August 1, 1982.  
8. Took Office August 30, 1982.  
9. Retired October 26, 1982.  
10. Took Office February 11, 1983.

### Roster of Judges and Clerks

Court Administrator: Bobby A. Theriot

1. Became Chief Judge July 10, 1982.
2. Became a Circuit Court Judge July 10, 1982.
3. Took Office October 7, 1982.
4. Became Chief Judge January 1, 1983.
5. Took Office January 1, 1983.
6. Became Circuit Judge March 17, 1982.
7. Took Office April 23, 1982.
8. Took Office September 30, 1982.
9. Retired January 4, 1983. Died January 6, 1983.
10. Took Office January 5, 1983.
11. Took Office January 1, 1983.
12. Became Chief Judge November 19, 1982.

### Roster of Judges and Clerks

Court Administrator: Ralph C. Berry

1. Became Chief Judge July 1, 1982.
2. Became Circuit Judge January 1, 1983.
3. Died January 19, 1983.
4. Took Office June 1, 1982.
5. Took Office April 21, 1982.
6. Took Office March 17, 1982.
7. Became Circuit Judge November 12, 1982.
8. Took Office March 1, 1982. Became Chief Judge January 1, 1983.
9. Took Office December 17, 1982.

# **DISTRICT COURTS OF LOUISIANA** Roster of Judges and Clerks

Judges	Parishes Within District	Parish Seats	Clerk of Court
<b>TWENTY-FOURTH DISTRICT</b>			
Wallace C. LeBrun, Chief Judge Thomas C. Wicker, Jr. Nestor L. Currault, Jr. <sup>1</sup> Fred S. Bowes <sup>1</sup> Frank V. Zaccaria H. Charles Gaudin <sup>1</sup> Floyd W. Newlin Alvin R. Eason <sup>2</sup> Lionel R. Collins Walter E. Kollin Robert J. Burns Jacob L. Karno James L. Cannella Ronald P. Loumiet Roy L. Price <sup>3</sup> Clarence E. McManus <sup>4</sup> M. Joseph Tiemann <sup>5</sup> Joseph F. Grefer <sup>6</sup>	Jefferson	Gretna	W. M. Justice, Jr.
Court Administrator: Sandra Joaen Smith			
<b>JEFFERSON PARISH JUVENILE COURT</b>			
Thomas P. McGee, Chief Judge Sol Gothard Nancy Amato Konrad			
Court Administrator: Vickie Crais Charles J. Ulfers <sup>10</sup>			
<b>TWENTY-FIFTH DISTRICT</b>			
Preston H. Hufft, Chief Judge Emile E. Martin, III <sup>7</sup>	Plaquemines	Pointe-a-la-Hache	A. L. Lobrano
<b>TWENTY-SIXTH DISTRICT</b>			
Monty W. Wyche, Chief Judge Cecil C. Lowe <sup>11</sup> Graydon K. Kitchens, Jr. Cecil P. Campbell, II	Webster Bossier	Minden Benton	H. S. Matthews W. Mabry
<b>TWENTY-SEVENTH DISTRICT</b>			
Joseph A. LaHaye, Chief Judge H. Garland Pavy Isom J. Guillory, Jr. Robert Brinkman <sup>8</sup>	St. Landry	Opelousas	D. W. Doga
<b>TWENTY-EIGHTH DISTRICT</b>			
Edwin R. Hughes, Chief Judge	LaSalle	Jena	J. D. Nugent
Court Administrator: Sue Coleman			
<b>TWENTY-NINTH DISTRICT</b>			
C. William Bradley, Chief Judge Ruche J. Marino Edward A. Dufresne, Jr. <sup>1</sup> Thomas J. Malik <sup>11</sup> Joel T. Chaisson Mary Ann Vial Lemmon <sup>9</sup>	St. Charles St. John	Hahnville Edgard	C. J. Oubre Harold L. Montegut
<b>THIRTIETH DISTRICT</b>			
Ted R. Broyles, Chief Judge Roy B. Tuck, Jr.	Vernon	Leesville	D. M. Perkins
<b>THIRTY-FIRST DISTRICT</b>			
Walter C. Peters, Chief Judge	Jefferson Davis	Jennings	G. B. Huff

1. Became Circuit Court Judge May 1, 1982.  
2. Became Chief Judge in October 14, 1982.  
3. Took Office March 5, 1982.  
4. Took Office June 30, 1982.  
5. Took Office July 29, 1982.  
6. Took Office August 6, 1982.

7. Took Office January 29, 1982.  
8. Took Office December 30, 1982.  
9. Took Office May 1, 1982.  
10. Became Court Administrator July 1, 1982.  
11. Became Chief Judge January 1, 1983.

# **DISTRICT COURTS OF LOUISIANA** Roster of Judges and Clerks

Judges	Parishes Within District	Parish Seats	Clerk of Court
<b>THIRTY-SECOND DISTRICT</b>			
Baron B. Bourg, Chief Judge Cleveland J. Marcel, Sr. <sup>1</sup> Ashby W. Pettigrew, Jr. Wilmore J. Broussard, Jr. Paul R. Wimbish Timothy C. Ellender <sup>2</sup>	Terrebonne	Houma	I. R. Boudreaux
<b>THIRTY-THIRD DISTRICT</b>			
Edward M. Mouser, Chief Judge	Allen	Oberlin	R. L. Thomas
<b>THIRTY-FOURTH DISTRICT</b>			
Richard H. Gauthier, Chief Judge Melvyn J. Perez Thomas M. McBride, III	St. Bernard	Chalmette	S. D. Torres
<b>THIRTY-FIFTH DISTRICT</b>			
W. T. McCain, Chief Judge	Grant	Colfax	J. E. Lemoine
Court Administrator: Roger J. Breedlove Ernie L. Vallery <sup>4</sup>			
<b>THIRTY-SIXTH DISTRICT</b>			
Leland H. Coltharp, Jr., Chief Judge	Beauregard	DeRidder	R. B. Nichols
<b>THIRTY-SEVENTH DISTRICT</b>			
Ronald L. Lewellyan, Chief Judge	Caldwell	Columbia	A. L. Darden
Court Administrator: Glenda Wilkes Marion Harrelson <sup>5</sup>			
<b>THIRTY-EIGHTH DISTRICT</b>			
H. Ward Fontenot, Chief Judge	Cameron	Cameron	R. U. Primeaux
<b>THIRTY-NINTH DISTRICT</b>			
Richard N. Ware, Chief Judge <sup>3</sup>	Red River	Coushatta	E. V. Womack
<b>ORLEANS PARISH CIVIL DISTRICT COURT</b>			
Thomas A. Early, Jr. Robert A. Katz Richard J. Garvey S. Sanford Levy Gerald P. Fedoroff <sup>6</sup> Henry J. Roberts, Jr. Steven R. Plotkin Revius O. Ortique, Jr. Melvin J. Duran George C. Connolly, Jr., Chief Judge Richard J. Ganucheau Joseph V. DiRosa Charles L. Rivet John M. Holahan Anthony J. Vesich, Jr.			Division A B C D E F G H I J K L Commissioner Commissioner Commissioner

Clerk: Dan Foley

1. Retired September 11, 1982.  
2. Took Office September 12, 1982.  
3. Took Office March 5, 1982.

4. Became Court Administrator September 1, 1982.  
5. Became Court Administrator March 15, 1982.  
6. Became Chief Judge January 1, 1983.



# **DISTRICT COURTS OF LOUISIANA** Roster of Judges and Clerks

## **Judges**

### **ORLEANS PARISH CRIMINAL DISTRICT COURT**

Miriam G. Waltzer<sup>1</sup>  
 Matthew S. Braniff  
 Jerome M. Winsberg  
 Frank A. Marullo, Jr.  
 Rudolph F. Becker, III  
 Dennis J. Waldron<sup>1</sup>  
 Frank J. Shea, Jr.<sup>2</sup>  
 Bernard J. Bagert, Sr., Chief Judge<sup>3</sup>  
 James F. McKay<sup>4</sup>  
 Shirley G. Wimberly, Jr.<sup>5</sup>  
 Alvin V. Oser  
 Gerard J. Hansen  
 Nils R. Douglas  
 Anthony J. Russo, Jr.  
 George G. Kiefer  
 Andrew J. Sciambra

Clerk: Edwin A. Lombard  
 Court Administrator: Rivers Trussell

### **ORLEANS PARISH JUVENILE COURT**

Joan B. Armstrong  
 Clarence B. Giarrusso, Jr.<sup>6</sup>  
 Salvatore T. Mule, Administrative Judge  
 Edward G. Gillin  
 Anita H. Ganucheau

Clerk: Joseph L. Peyton  
 Court Administrator: Florence Onstad

1. Took Office February 10, 1982.
2. Became Chief Judge September 8, 1982.
3. Died September 7, 1982.
4. Took Office December 14, 1982.
5. Took Office March 24, 1982.
6. Became Administration Judge January 6, 1983.

## **Section**

A  
B  
C  
D  
E  
F  
G  
H

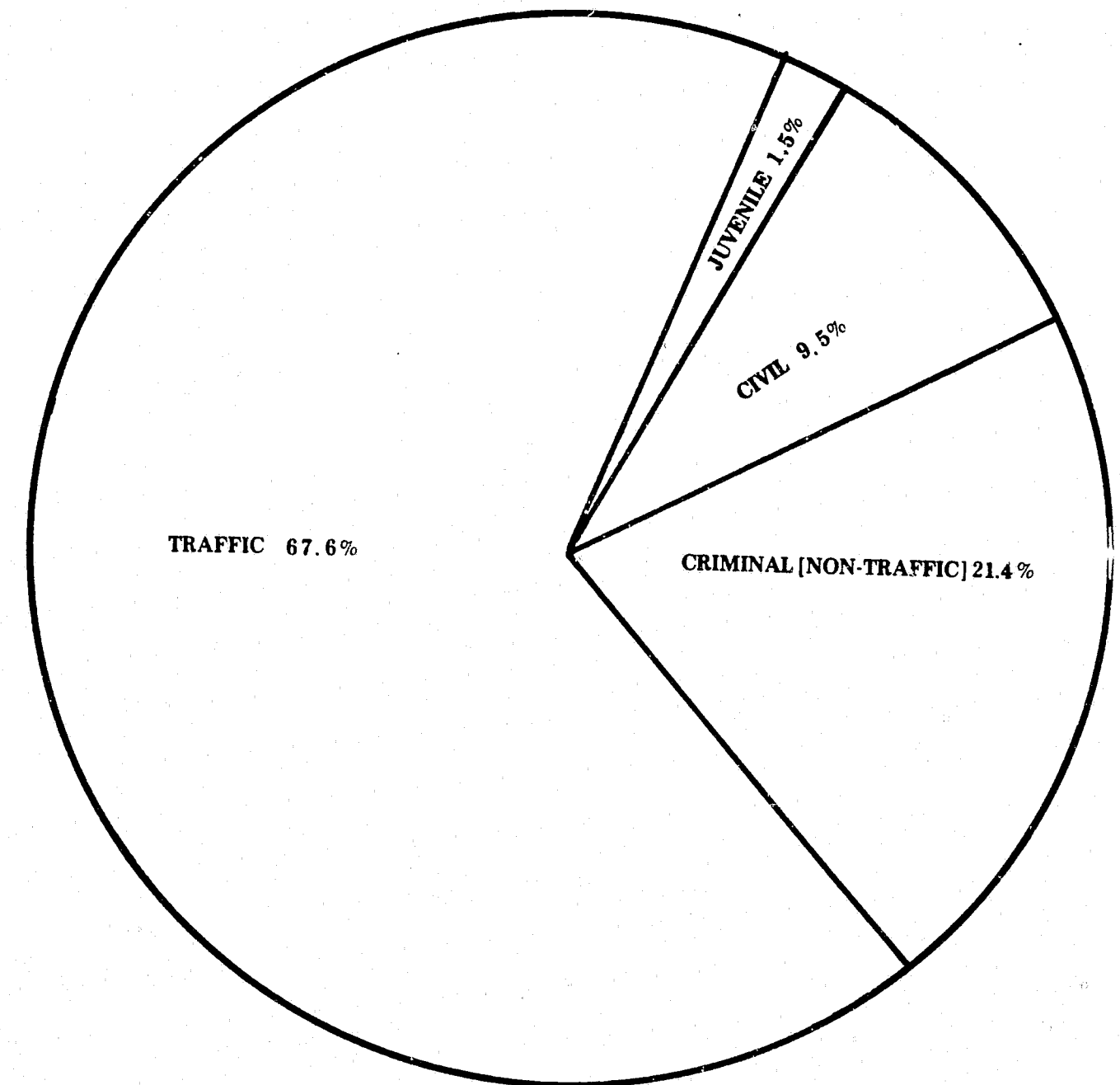
I  
J

Magistrate  
 Commissioner  
 Commissioner  
 Commissioner  
 Commissioner

## **Section**

A  
B  
C  
D  
E

# **LOUISIANA CITY AND PARISH COURTS** Cases Processed\*



\*See Statistical Section for map and additional data.

**CITY AND PARISH COURTS OF LOUISIANA**  
**Roster of Judges and Locations of Courts**

Cities	Parishes	Judges
Abbeville	Vermilion	Marcus A. Broussard, Jr.
Alexandria	Rapides	George M. Foote
Ascension Parish	Ascension	A. J. Kling, Jr. <sup>1</sup>
		Steven M. Joffroin <sup>2</sup>
Baker	E. Baton Rouge	Bryant W. Conway
Bastrop	Morehouse	Woodrow Wilson
Baton Rouge:		
Division A	E. Baton Rouge	Byron Stringer
Division B		L. J. Hymel
Division C		Darrell D. White
Division D		Rosemary T. Pillow

Baton Rouge Court Administrator: Mickey Skyring

Bogalusa	Washington	Jim W. Richardson, Jr.
Bossier City	Bossier	Billy Ross Robinson

Bossier Clerk/Court Administrator: Deborah Goodman

Breaux Bridge	St. Martin	W. Glenn Soileau
Bunkie	Avoyelles	James H. Mixon
Crowley	Acadia	Don Aaron, Jr. <sup>1</sup>
		T. Barret Harrington <sup>2</sup>
Denham Springs	Livingston	Raymond S. Bennett
DeRidder	Beauregard	William E. Hall, Jr.
Eunice	St. Landry	J. Nilas Young
Franklin	St. Mary	Charles R. Prevost
Hammond	Tangipahoa	John D. Kopfler
Houma	Terrebonne	Jude T. Fanguy
Jeanerette	Iberia	John A. Rogers
Jefferson Parish:		
1st Parish Court	Jefferson	Cyril J. Gracianette
Division A		James M. Lockhart
Division B		
2nd Parish Court	Jefferson	
Division A		John J. Molaison
Division B		Herb G. Gautreaux
Jennings	Jefferson Davis	William N. Knight
Kaplan	Vermilion	Reule P. Bourque
Lafayette	Lafayette	Kaliste J. Saloom, Jr.

Lafayette Court Administrator: E. J. Picard

Lake Charles	Calcasieu	Thomas P. Quirk
Division A		Ralph J. Hanks, Jr. <sup>3</sup>
Division B		Jack W. Caskey <sup>4</sup>
Leesville	Vernon	S. Chris Smith, III
Marksville	Avoyelles	Benjamin C. Bennett, Jr.
Minden	Webster	R. Harmon Drew
Monroe	Ouachita	Elvis C. Stout
		John Larry Lolley

1. Became District Judge January 1, 1983.  
2. Took Office January 1, 1983.  
3. Retired on May 1, 1982.  
4. Took Office September 18, 1982.

**CITY AND PARISH COURTS OF LOUISIANA**  
**Roster of Judges and Locations of Courts**

Cities	Parishes	Judges
Morgan City	St. Mary	Robert S. Robertson
Natchitoches	Natchitoches	Marvin F. Gahagan
New Iberia	Iberia	Robert L. Segura
New Orleans:		
1st City Court	Orleans	Dominic C. Grieshaber
1st City Court		Charles A. Imbornone
1st City Court		Niles A. Hellmers
2nd City Court		Lorain F. Wingerter
Municipal Court		John A. Shea
Municipal Court		Joseph R. Bossetta
Municipal Court		Eddie L. Sapir
Traffic Court		James E. Glancey, Jr.
Traffic Court		Lambert J. Hassinger
Traffic Court		Thomas L. Giraud
Traffic Court		Oliver S. Delery
Oakdale	Allen	Louis P. Trent
Opelousas	St. Landry	John P. Navarre
Pineville	Rapides	Kenneth Boagni, Jr.
Plaquemine	Iberville	F. Jean Pharis
Port Allen	W. Baton Rouge	Joseph B. Dupont, Sr.
Rayne	Acadia	Philip N. Pecquet
Ruston	Lincoln	Denald A. Beslin
Slidell	St. Tammany	Kenneth W. Campbell
Shreveport:		Gus A. Fritchie, Jr.
Division A	Caddo	Garner R. Miller
Division B		Charles R. Scott <sup>1</sup>
Division C		Charles W. Kelly, IV <sup>2</sup>
		H. Dan Sawyer

Shreveport Clerk/Court Administrator: Virginia Hester

Springhill	Webster	N. J. McConnell
Sulphur	Calcasieu	Ellis W. Thompson
Thibodaux	Lafourche	David M. Richard
Vidalia	Concordia	George C. Murray, Jr.
Ville Platte	Evangeline	J. Wendel Fusilier
West Monroe	Ouachita	Charles A. Traylor, II
Winnfield	Winn	Jim W. Wiley
Winnsboro	Franklin	E. Rudolph McIntyre
Zachary	E. Baton Rouge	Russell Bankston

1. Became District Court Judge January 1, 1983.  
2. Took Office January 7, 1983.

STATISTICAL APPENDIX

INTRODUCTION TO STATISTICAL SECTION

The statistial information in this section was compiled from data submitted to the Judicial Administator's Office by the various courts of Louisiana during calendar year 1982.

In 1982, due to the constitutional amendment which gave criminal jurisdiction to the circuit courts of appeal on July 1, 1982, filings in the Supreme Court fell for the first time in more than a decade. During 1982, there were 3,254 matters filed in the Supreme Court, approximately the same level of filings as in 1980. Even with the relief given by the constitutional amendment, the filings in 1982 were 179% greater than the filings ten years ago.

Since 1972, total filings in the Louisiana Courts of Appeal have increased to 4,281 filings (a 79% increase). Total filings during 1982 were 23% greater than in 1981. Civil filings grew by 5% over 1981 and totaled 3,654 filings. The dramatic area of growth was in the criminal area. The circuit courts of appeal assumed criminal jurisdiction on July 1, 1982. During the second half of 1982, there were 301 criminal appeals and 326 criminal writs filed in the courts of appeal.

The past 10 years have witnessed a 100% increase in the combined civil and criminal filings in the district courts of Louisiana. During 1982, there were 520,781 civil and criminal filings in the district courts. Of these 160,801 were civil filings and 359,980 were criminal filings. Civil filings during 1982 were up 3% over 1981, but criminal filings decreased by 3% (No comparison of 1982 juvenile filings in the district courts is attempted since juvenile filings were not contained in this report during the last several years). The number of civil jury trials remained virtually unchanged during 1982 (687 in 1982 vs. 689 in 1981). However, the number of criminal jury trials rose sharply from 1073 in 1981 to 1255 in 1982. This is an increase of 17%.

In 1982, filings in Louisiana City and Parish Courts continued to grow. The 1982 filings were 6% greater than in 1981 and 45% greater than in 1975. As in past years, the bulk of these filings (500,503) were traffic related. However, the city and parish courts also received a total of 250,879 civil, juvenile, and criminal (non-traffic) filings.

SUPREME COURT OF LOUISIANA

TEN YEAR RECAP OF FILINGS

	APPEALS FILED	WRITS FILED	REHEARING APPLICATIONS FILED	OTHER FILINGS	TOTAL FILINGS	FILINGS PER JUSTICE*
1973	204	873	139	6	1,222	175
1974	235	1,014	175	9	1,433	205
1975	358	1,240	229	8	1,835	262
1976	461	1,278	212	22	1,973	282
1977	608	1,622	169	31	2,435	347
1978	563	1,813	249	29	2,654	379
1979	493	2,271	209	78	3,051	436
1980	661	2,319	268	91	3,339	477
1981	817	2,455	218	65	3,555	508
1982	646	2,254	269	85	3,254	465

\*Figures rounded to nearest whole number



**SUPREME COURT OF LOUISIANA  
THREE YEAR TREND IN ACTIVITY**

	1980	1981	1982
<b>APPEALS:</b>			
Filed	661	817	646
Dismissed	2	9	16
Opinions Rendered			
with written opinions	212	247	298
per curiam affirmances	292	346	378
<b>WRITS:</b>			
Applications Filed	2,319	2,455	2,254
Granted	549	559	431
to be argued	286	207	174
with orders	263	352	257
Dismissed	13	13	5
Not Considered	27	18	13
Denied	1,747	1,753	1,664
Opinions Rendered	207	226	162
<b>REHEARINGS:</b>			
Applied for	268	218	269
Granted	24	26	29
Denied	271	204	267
Opinions Rendered	21	24	19
<b>ORIGINAL JURISDICTION:</b>			
Petitions filed	11	16	19
Opinions Rendered	7	2	6
<b>OTHER MATTERS:</b>			
Filed	80	49	66
Opinions Rendered	4	5	0
<b>OTHER PER CURIAM OPINIONS RENDERED</b>	42	19	22
<b>TOTAL FILINGS:</b>	3,339	3,555	3,254
Per Justice	477	508	465
<b>TOTAL OPINIONS RENDERED</b>	785	869	885

**LOUISIANA COURTS OF APPEAL  
THREE YEAR TREND IN ACTIVITY**

	TOTAL 1980	TOTAL 1981	TOTAL 1982	CIVIL 1982	CRIMINAL 1982
<b>FIRST CIRCUIT:</b>					
Appeals Filed	743	706	831	726	105
Writs Filed	115	119	265	191	74
Writs Refused	82	89	210	149	61
Writs Granted	33	43	47	36	11
Cases Dismissed	79	30	52	46	6
Judgements Rendered	695	558	721	718	3
Rehearings Acted Upon	177	161	168	168	0
Cases Pending					
Argued But Not Decided	85	10	17	17	0
To Be Argued	292	610	533	431	102
<b>SECOND CIRCUIT:</b>					
Appeals Filed	354	344	381	302	79
Writs Filed	44	30	102	44	58
Writs Refused	31	22	80	35	45
Writs Granted	13	7	22	9	13
Cases Dismissed	19	29	27	24	3
Judgements Rendered	295	287	267	265	2
Rehearings Acted Upon	109	79	85	85	0
Cases Pending					
Argued But Not Decided	33	15	44	26	18
To Be Argued	89	106	133	72	61
<b>THIRD CIRCUIT:</b>					
Appeals Filed	541	573	671	602	69
Writs Filed	57	69	179	110	69
Writs Refused	44	45	92	54	38
Writs Granted	12	21	66	53	13
Cases Dismissed	49	34	29	23	6
Judgements Rendered	472	478	581	581	0
Rehearings Acted Upon	192	153	170	170	0
Cases Pending					
Argued But Not Decided	8	3	4	4	0
To Be Argued	195	264	231	170	61
<b>FOURTH CIRCUIT:</b>					
Appeals Filed	779	803	575	541	34
Writs Filed	240	234	291	198	93
Writs Refused	173	163	201	129	72
Writs Granted	66	56	78	57	21
Cases Dismissed	63	54	23	23	0
Judgements Rendered	564	593	598	598	0
Rehearings Acted Upon	312	198	210	210	0
Cases Pending					
Argued But Not Decided	148	106	68	68	0
To Be Argued	496	626	147	147	0
<b>FIFTH CIRCUIT*:</b>					
Appeals Filed			*105 334	320	14
Writs Filed			*4 102	70	32
Writs Refused			*6 87	63	24
Writs Granted			*3 15	7	8
Cases Dismissed			*15 60	58	2
Judgements Rendered			*18 247	247	0
Rehearings Acted Upon			*8 41	41	0
Cases Pending					
Argued But Not Decided			71	68	3
To Be Argued			151	146	5
<b>TOTAL FOR ALL CIRCUITS:</b>					
Appeals Filed	2,417	2,426	2,687	2,386	301
Writs Filed	456	452	928	602	326
Writs Refused	330	319	664	424	240
Writs Granted	124	127	225	159	66
Cases Dismissed	210	147	176	159	17
Judgements Rendered	2,026	1,916	2,396	2,391	5
Rehearings Acted Upon	790	591	666	666	0
Cases Pending					
Argued But Not Decided	274	134	204	183	21
To Be Argued	1,072	1,606	1,195	966	229

\*The following figures on civil cases: 105 appeals filed; 11 writs filed; 6 writs refused; 3 writs granted; 15 cases dismissed; 18 judgements rendered; and 8 rehearings acted upon; are included in both the Fourth and Fifth Circuits' statistics but are not counted twice in the "Total for all Circuits". These cases were those handled by the Fourth Circuit which would have been the Fifth Circuit cases had the Fifth Circuit been created January 1, 1982 instead of May 1, 1982.

# LOUISIANA DISTRICT COURTS

## THREE YEAR TREND IN ACTIVITY

DISTRICT	PARISH	CASES FILED 1980 TOTAL	CASES FILED 1981 TOTAL	CASES FILED 1982 TOTAL	1982 JUVENILE	1982 CIVIL	1982 CRIMINAL
1	Caddo	19,911	18,769	17,959	None	8,794	9,165
	<b>District Totals</b>	<b>19,911</b>	<b>18,769</b>	<b>17,959</b>	<b>None</b>	<b>8,194</b>	<b>9,165</b>
2	Bienville	3,128	3,346	3,887	108	786	2,993
	Claiborne	2,873	5,187	3,340	109	520	2,711
	Jackson	2,806	2,900	3,387	120	860	2,407
	<b>District Totals</b>	<b>8,807</b>	<b>11,433</b>	<b>10,614</b>	<b>337</b>	<b>2,166</b>	<b>8,111</b>
3	Lincoln	4,272	5,675	5,676	173	921	4,582
	Union	3,843	3,355	3,901	130	827	2,944
	<b>District Totals</b>	<b>8,115</b>	<b>8,730</b>	<b>9,577</b>	<b>303</b>	<b>1,748</b>	<b>7,526</b>
4	Morehouse	4,078	4,173	4,283	76	1,010	3,197
	Ouachita	20,517	19,157	18,671	1,137	4,650	12,884
	<b>District Totals</b>	<b>24,595</b>	<b>23,330</b>	<b>22,954</b>	<b>1,213</b>	<b>5,660</b>	<b>16,081</b>
5	Franklin	4,202	4,734	4,081	66	1,100	2,915
	Richland	2,461	4,188	5,225	88	651	4,486
	W. Carroll	1,600	2,242	2,577	116	595	1,866
	<b>District Totals</b>	<b>8,263</b>	<b>11,164</b>	<b>11,883</b>	<b>270</b>	<b>2,346</b>	<b>9,267</b>
6	E. Carroll	1,896	5,828	3,227	192	418	2,617
	Madison	2,705	3,222	5,108	361	1,249	3,498
	Tensas	2,692	2,507	2,278	26	269	1,983
	<b>District Totals</b>	<b>7,293</b>	<b>11,557</b>	<b>10,613</b>	<b>579</b>	<b>1,936</b>	<b>8,098</b>
7	Catahoula	2,385	3,475	3,568	58	580	2,930
	Concordia	4,856	5,559	8,163	129	978	7,056
	<b>District Totals</b>	<b>7,241</b>	<b>9,034</b>	<b>11,731</b>	<b>187</b>	<b>1,558</b>	<b>9,986</b>
8	Winn	2,363	2,899	2,897	35	1,091	1,771
	<b>District Totals</b>	<b>2,363</b>	<b>2,899</b>	<b>2,897</b>	<b>35</b>	<b>1,091</b>	<b>1,771</b>
9	Rapides	19,144	18,523	15,961	328	5,287	10,346
	<b>District Totals</b>	<b>19,144</b>	<b>18,523</b>	<b>15,961</b>	<b>328</b>	<b>5,287</b>	<b>10,346</b>
10	Natchitoches	7,356	9,219	8,861	150	1,891	6,820
	<b>District Totals</b>	<b>7,356</b>	<b>9,219</b>	<b>8,861</b>	<b>150</b>	<b>1,891</b>	<b>6,820</b>
11	De Soto	3,905	6,409	4,237	90	1,138	3,009
	Sabine	3,527	3,875	4,409	73	1,127	3,209
	<b>District Totals</b>	<b>7,432</b>	<b>10,284</b>	<b>8,546</b>	<b>163</b>	<b>2,165</b>	<b>6,218</b>
12	Avoyelles	4,405	5,012	4,969	181	1,807	2,981
	<b>District Totals</b>	<b>4,405</b>	<b>5,012</b>	<b>4,969</b>	<b>181</b>	<b>1,807</b>	<b>2,981</b>
13	Evangeline	3,593	4,305	7,125	331	1,524	5,270
	<b>District Totals</b>	<b>3,593</b>	<b>4,305</b>	<b>7,125</b>	<b>331</b>	<b>1,524</b>	<b>5,270</b>
14	Calcasieu	20,130	22,626	22,473	477	7,512	14,484
	<b>District Totals</b>	<b>20,130</b>	<b>22,626</b>	<b>22,473</b>	<b>477</b>	<b>7,512</b>	<b>14,484</b>

# LOUISIANA DISTRICT COURTS

## THREE YEAR TREND IN ACTIVITY

DISTRICT	PARISH	CASES FILED 1980 TOTAL	CASES FILED 1981 TOTAL	CASES FILED 1982 TOTAL	1982 JUVENILE	1982 CIVIL	1982 CRIMINAL
15	Acadia	7,226	10,574	8,812	266	2,291	6,255
	Lafayette	18,035	18,157	22,997	595	7,854	14,548
	Vermillion	4,758	5,416	5,970	155	1,970	3,845
	<b>District Totals</b>	<b>30,019</b>	<b>34,147</b>	<b>37,779</b>	<b>1,016</b>	<b>12,115</b>	<b>24,648</b>
16	Iberia	8,417	9,658	10,304	213	2,895	7,196
	St. Martin	6,015	7,418	9,652	203	1,663	7,786
	St. Mary	10,975	10,480	10,578	279	3,280	7,019
	<b>District Totals</b>	<b>25,407</b>	<b>27,556</b>	<b>30,534</b>	<b>695</b>	<b>7,838</b>	<b>2,201</b>
17	Lafourche	12,370	18,461	17,785	632	2,664	14,489
	<b>District Totals</b>	<b>12,370</b>	<b>18,461</b>	<b>17,785</b>	<b>632</b>	<b>2,664</b>	<b>14,489</b>
18	Iberville	5,210	5,431	6,005	63	1,330	4,612
	Point Coupee	3,636	5,009	4,458	61	984	3,413
	W. Baton Rouge	8,355	8,125	7,264	97	955	6,212
	<b>District Totals</b>	<b>17,201</b>	<b>18,565</b>	<b>17,727</b>	<b>221</b>	<b>3,269</b>	<b>14,237</b>
19	E. Baton Rouge	23,612	24,310	23,744	None	11,275	12,469
	<b>District Totals</b>	<b>23,612</b>	<b>24,310</b>	<b>23,744</b>	<b>None</b>	<b>11,275</b>	<b>12,469</b>
20	E. Feliciana	2,851	2,632	2,715	51	1,010	1,654
	W. Feliciana	2,167	2,379	2,053	35	376	1,642
	<b>District Totals</b>	<b>5,018</b>	<b>5,011</b>	<b>4,768</b>	<b>86</b>	<b>1,386</b>	<b>3,296</b>
21	Livingston	6,974	9,866	8,192	179	2,359	5,654
	St. Helena	1,414	809	758	14	373	371
	Tangipahoa	9,753	12,177	12,343	373	3,602	8,368
	<b>District Totals</b>	<b>18,141</b>	<b>22,852</b>	<b>21,293</b>	<b>566</b>	<b>6,334</b>	<b>14,393</b>
22	St. Tammany	13,978	16,167	17,285	194	5,196	11,895
	Washington	5,169	4,883	4,650	105	1,947	2,598
	<b>District Totals</b>	<b>19,147</b>	<b>21,050</b>	<b>21,935</b>	<b>299</b>	<b>7,143</b>	<b>14,493</b>
23	Ascension	1,786	1,712	1,996	103	1,713	180
	Assumption	3,868	6,527	4,267	36	633	3,598
	St. James	2,600	2,712	3,413	25	636	2,752
	<b>District Totals</b>	<b>8,254</b>	<b>10,951</b>	<b>9,676</b>	<b>164</b>	<b>2,982</b>	<b>6,530</b>
24	Jefferson	17,309	18,470	18,102	None	14,024	4,078
	<b>District Totals</b>	<b>17,309</b>	<b>18,470</b>	<b>18,102</b>	<b>None</b>	<b>14,024</b>	<b>4,078</b>
25	Plaquemines	5,472	5,163	6,136	305	1,087	4,744
	<b>District Totals</b>	<b>5,472</b>	<b>5,163</b>	<b>6,136</b>	<b>305</b>	<b>1,087</b>	<b>4,744</b>
26	Bossier	10,453	9,801	10,385	464	2,676	7,245
	Webster	5,049	5,328	5,368	156	1,234	3,978
	<b>District Totals</b>	<b>15,502</b>	<b>15,129</b>	<b>15,753</b>	<b>620</b>	<b>3,910</b>	<b>11,223</b>
27	St. Landry	9,561	12,500	13,049	284	3,344	9,421
	<b>District Totals</b>	<b>9,561</b>	<b>12,500</b>	<b>13,049</b>	<b>284</b>	<b>3,344</b>	<b>9,421</b>

## LOUISIANA DISTRICT COURTS

## THREE YEAR TREND IN ACTIVITY

DISTRICT	PARISH	CASES FILED 1980 TOTAL	CASES FILED 1981 TOTAL	CASES FILED 1982 TOTAL	1982 JUVENILE	1982 CIVIL	1982 CRIMINAL
28	LaSalle	3,003	3,485	3,251	65	766	2,420
	<b>District Totals</b>	<b>3,003</b>	<b>3,485</b>	<b>3,251</b>	<b>65</b>	<b>766</b>	<b>2,420</b>
29	St. Charles	11,258	13,300	15,672	349	1,645	13,678
	St. John	7,217	8,728	9,487	352	1,335	7,800
	<b>District Totals</b>	<b>18,475</b>	<b>22,028</b>	<b>25,159</b>	<b>701</b>	<b>2,980</b>	<b>21,478</b>
30	Vernon	10,926	12,778	13,872	321	1,536	12,015
	<b>District Totals</b>	<b>10,926</b>	<b>12,778</b>	<b>13,872</b>	<b>321</b>	<b>1,536</b>	<b>12,015</b>
31	Jefferson Davis	4,544	5,252	6,201	154	1,087	4,960
	<b>District Totals</b>	<b>4,544</b>	<b>5,252</b>	<b>6,201</b>	<b>154</b>	<b>1,087</b>	<b>4,960</b>
32	Terrebonne	13,738	19,208	17,276	433	4,009	12,834
	<b>District Totals</b>	<b>13,738</b>	<b>19,208</b>	<b>17,276</b>	<b>433</b>	<b>4,009</b>	<b>12,834</b>
33	Allen	3,093	3,434	2,442	41	993	1,408
	<b>District Totals</b>	<b>3,093</b>	<b>3,434</b>	<b>2,442</b>	<b>41</b>	<b>993</b>	<b>1,408</b>
34	St. Bernard	8,953	10,360	9,966	621	2,853	6,492
	<b>District Totals</b>	<b>8,953</b>	<b>10,360</b>	<b>9,966</b>	<b>621</b>	<b>2,853</b>	<b>6,492</b>
35	Grant	3,067	3,476	3,616	43	570	3,003
	<b>District Totals</b>	<b>3,067</b>	<b>3,476</b>	<b>3,616</b>	<b>43</b>	<b>570</b>	<b>3,003</b>
36	Beauregard	4,601	5,756	6,390	209	1,161	5,020
	<b>District Totals</b>	<b>4,601</b>	<b>5,756</b>	<b>6,390</b>	<b>209</b>	<b>1,161</b>	<b>5,020</b>
37	Caldwell	2,519	2,839	3,171	79	466	2,626
	<b>District Totals</b>	<b>2,519</b>	<b>2,839</b>	<b>3,171</b>	<b>79</b>	<b>466</b>	<b>2,626</b>
38	Cameron	6,088	7,535	7,138	18	470	6,650
	<b>District Totals</b>	<b>6,088</b>	<b>7,535</b>	<b>7,138</b>	<b>18</b>	<b>470</b>	<b>6,650</b>
39	Red River	2,877	4,214	2,537	64	594	1,879
	<b>District Totals</b>	<b>2,877</b>	<b>4,214</b>	<b>2,537</b>	<b>64</b>	<b>594</b>	<b>1,879</b>
	Orleans						
	Civil	19,631	20,268	20,460	None	20,460	None
	Criminal	6,228	6,621	7,049	None	None	7049
	<b>District Totals</b>	<b>25,859</b>	<b>26,889</b>	<b>27,509</b>	<b>None</b>	<b>20,460</b>	<b>7049</b>
	<b>Statewide Total</b>	<b>463,404</b>	<b>528,304</b>	<b>532,972</b>	<b>12,191</b>	<b>160,801</b>	<b>359,980</b>

1982  
JURY TRIALS IN THE DISTRICT COURTS

JUDICIAL DISTRICT	CIVIL	CRIMINAL
1	10	48
2	0	11
3	0	15
4	7	67
5	0	0
6	0	18
7	6	14
8	0	8
9	31	28
10	7	6
11	5	17
12	8	9
13	5	2
14	40	50
15	39	58
16	21	40
17	2	4
18	3	7
19	58	189
20	3	5
21	21	17
22	12	38
23	6	1
24	96	76
25	6	9
26	8	29
27	29	34
28	0	0
29	14	23
30	0	14
31	1	11
32	4	16
33	0	1
34	14	5
35	0	7
36	1	10
37	1	1
38	8	6
39	3	5
Orleans Civil	218	
Orleans Criminal		356

TOTAL CIVIL - 687  
TOTAL CRIMINAL - 1,255

## LOUISIANA FAMILY AND JUVENILE COURTS

## Three Year Trend in Activity

	CASES FILED 1980	CASES FILED 1981*	CASES FILED 1982
Caddo Juvenile	2,530	3,298	3,374
East Baton Rouge Family	5,683	3,013	5,258
Jefferson Juvenile	6,161	5,457	6,261
Orleans Juvenile	7,636	8,475	9,382
State Total	22,010	20,243	24,275

\*1980 and 1981 Reflect only new cases filed.



LOUISIANA CITY AND PARISH COURTS - CASES PROCESSED

CITY	CIVIL		CRIMINAL		TRAFFIC		JUVENILE		TOTAL CASES	
	FILED	TERM	FILED	TERM	FILED	TERM	FILED	TERM	FILED	TERM
Abbeville	379	375	909	905	2046	2039	142	128	3476	3447
Alexandria	1511	687	1992	1992	2928	2928	474	474	6905	6081
Ascension	248	119	14243	13377	0	0	186	81	14677	13577
Baker	127	64	328	244	664	593	33	38	1152	939
Bastrop	1271	1315	1397	1374	2570	2534	182	193	5420	5416
Baton Rouge	8103	6712	4889	4996	68110	64252	0	0	81102	75960
Bogalusa	509	167	1308	1199	1610	1459	622	614	4049	3439
Bossier City	1163	1526	1940	1875	5726	5353	334	337	9163	9091
Breaux Bridge	174	72	740	471	1025	1133	66	58	2005	1734
Bunkie	138	95	638	638	806	806	45	34	1627	1573
Crowley	289	238	2056	2019	861	871	281	265	3487	3393
Denham Springs	343	325	857	549	5361	5260	459	325	7020	6459
De Ridder	28	26	364	236	723	491	123	107	1238	860
Eunice	754	704	1033	1046	2239	2239	331	314	4357	4303
Franklin	44	8	516	390	460	376	62	57	1082	831
Hammond	1465	854	3454	3059	4101	4469	387	317	9407	8699
Houma	1986	1582	3547	2665	7481	7428	334	321	13348	11996
Jeanerette	136	136	530	173	353	170	78	27	1097	506
Jeff 1st Par Ct.	4386	4863	2061	1477	44274	39852	0	0	50721	46192
Jeff 2nd Par Ct.	2988	2250	4942	5201	29659	28205	0	0	37589	35656
Jennings	225	112	427	325	1139	1050	77	71	1868	1558
Kaplan	106	48	389	214	1959	1822	65	37	2519	2121
Lafayette	1806	1280	3146	3010	26269	26060	818	817	32039	31167
Lake Charles	2672	1104	7353	2245	26365	14219	807	807	37197	18375
Leesville	107	61	2670	2297	4881	4205	29	20	7687	6583
Marksville	211	147	511	365	1106	1106	51	51	1879	1669
Minden	524	359	1257	1136	420	399	47	42	2248	1936
Monroe	3381	2643	10954	6663	12236	10812	727	608	27298	20726
Morgan City	91	117	1944	2006	2644	2685	112	117	4791	4925
Natchitoches	594	162	2029	887	2970	1859	122	122	5715	3030
New Iberia	761	722	2253	2273	3723	3720	261	259	6998	6974
N.O. 1st City Ct.	34723	16550	0	0	0	0	0	0	34723	16550
N.O. 2nd City Ct.	3368	1138	0	0	0	0	0	0	3368	1138
N.O. Municipal Ct.	0	0	49815	39212	0	0	0	0	49815	39212
N.O. Traffic Ct.	0	0	0	0	161688	94740	0	0	161688	94740
Oakdale	101	126	902	1072	1026	1051	158	167	2187	2416
Opelousas	621	517	2378	1322	4553	2871	316	327	7868	5037
Pineville	389	399	494	396	1082	1007	149	149	2114	1951
Plaquemine	0	0	0	0	0	0	0	0	0	0
Port Allen	18	20	221	215	900	814	0	0	1139	1049
Rayne	258	212	867	815	1029	999	96	91	2250	2117
Ruston	441	57	2230	2230	2631	2631	126	123	5428	5041
Shreveport	4733	3592	8548	8263	38989	39067	0	0	52270	50922
Slidell	713	888	2138	2051	3803	3544	529	528	7183	7011
Springhill	404	404	579	579	394	394	66	66	1443	1443
Sulphur	635	346	1059	1362	9147	7731	263	206	11104	9645
Thibodaux	369	65	864	404	4830	3457	95	65	6158	3991
Vidalia	21	21	229	228	907	869	52	73	1209	1191
Ville Platte	1000	1217	797	403	745	543	209	207	2751	2370
West Monroe	1271	832	2362	2090	2627	2624	247	240	6507	5786
Winnfield	77	53	260	222	726	691	3	12	1066	978
Winnsboro	280	237	682	728	202	181	0	0	1164	1146
Zachary	158	113	90	105	515	515	23	26	786	759
State Total	86100	55660	155192	127004	500603	402124	9587	8921	751382	593709

LOUISIANA CITY AND PARISH COURTS  
CRIMINAL CASES PROCESSED

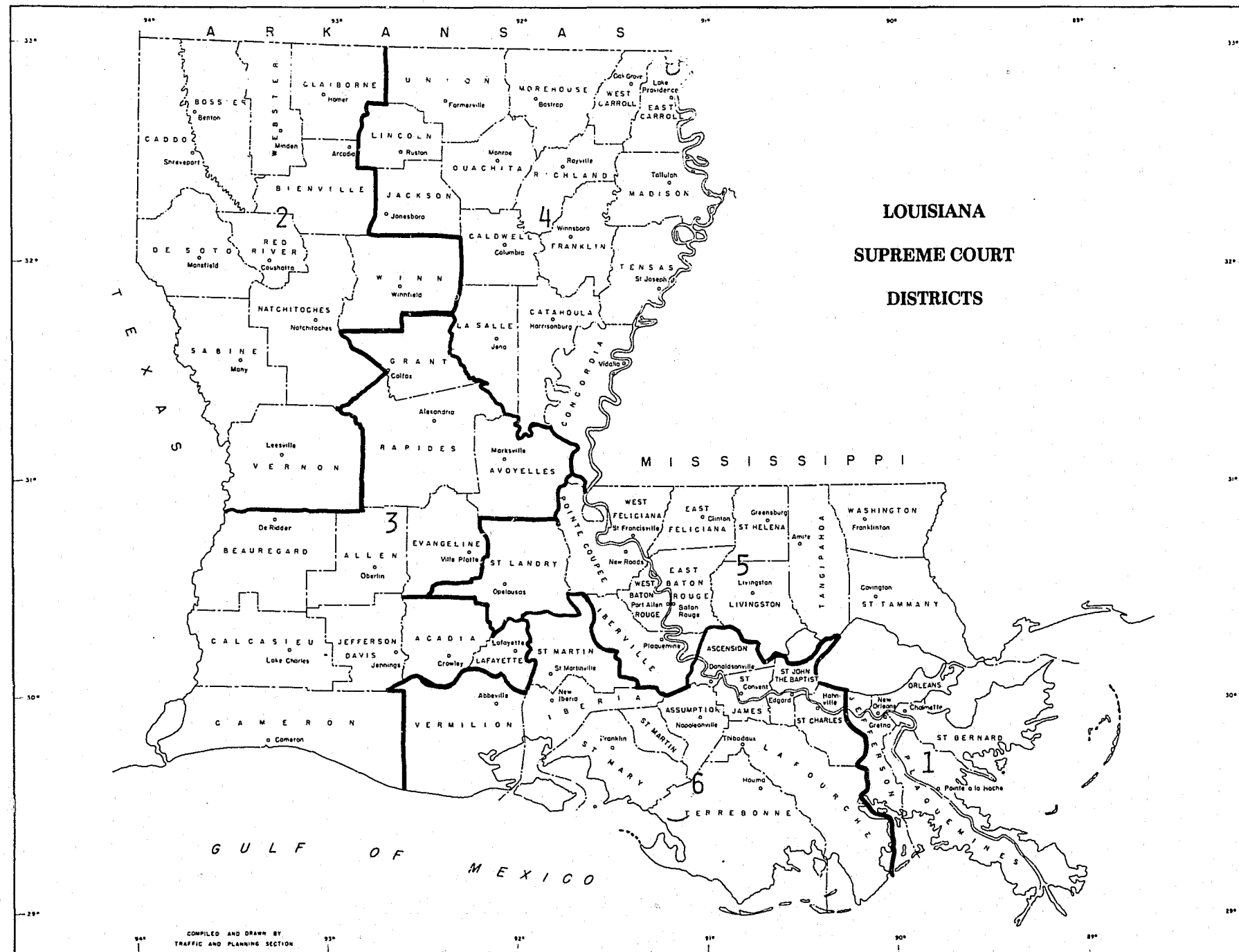
CITY	STATE MISDEMEANORS		ORDINANCE VIOLATIONS	
	Filed	Term	Filed	Term
Abbeville	110	109	799	796
Alexandria	454	454	1538	1538
Ascension	14243	13377	0	0
Baker	327	244	1	0
Bastrop	0	0	1397	1374
Baton Rouge	0	0	4889	4996
Bogalusa	582	512	726	687
Bossier City	179	188	1761	1687
Breaux Bridge	183	96	557	375
Bunkie	8	8	630	630
Crowley	1135	1056	921	963
Denham Springs	283	242	574	307
De Ridder	0	0	364	236
Eunice	238	240	795	806
Franklin	53	36	463	354
Hammond	1881	1518	1573	1541
Houma	895	390	2652	2275
Jeanerette	181	62	349	111
Jeff 1st Par Ct.	1978	1426	83	51
Jeff 2nd Par Ct.	4860	5153	82	48
Jennings	0	0	427	325
Kaplan	22	13	367	201
Lafayette	1312	1298	1834	1712
Lake Charles	2464	786	4889	1459
Leesville	297	234	2373	2063
Marksville	0	0	511	365
Minden	0	0	1257	1136
Monroe	808	721	10146	5942
Morgan City	149	153	1795	1853
Natchitoches	0	0	2029	887
New Iberia	510	516	1743	1757
N.O. 1st City Ct.	0	0	0	0
N.O. 2nd City Ct.	0	0	0	0
N.O. Municipal Ct.	0	0	0	0
N.O. Traffic Ct.	49815	39212	0	0
Oakdale	0	0	0	0
Opelousas	295	326	607	746
Pineville	1619	1028	759	294
Plaquemine	38	31	456	365
Port Allen	0	0	0	0
Rayne	221	215	0	0
Ruston	264	247	603	568
Shreveport	843	843	1387	1387
Slidell	3525	3355	5023	4908
Springhill	0	0	2138	2051
Sulphur	6	6	573	573
Thibodaux	375	336	684	1026
Vidalia	526	226	338	178
Ville Platte	221	216	8	12
West Monroe	293	130	504	273
Winnfield	32	34	2330	2056
Winnsboro	0	0	260	222
Zachary	0	0	682	728
STATE TOTAL	91225	75037	63967	51967

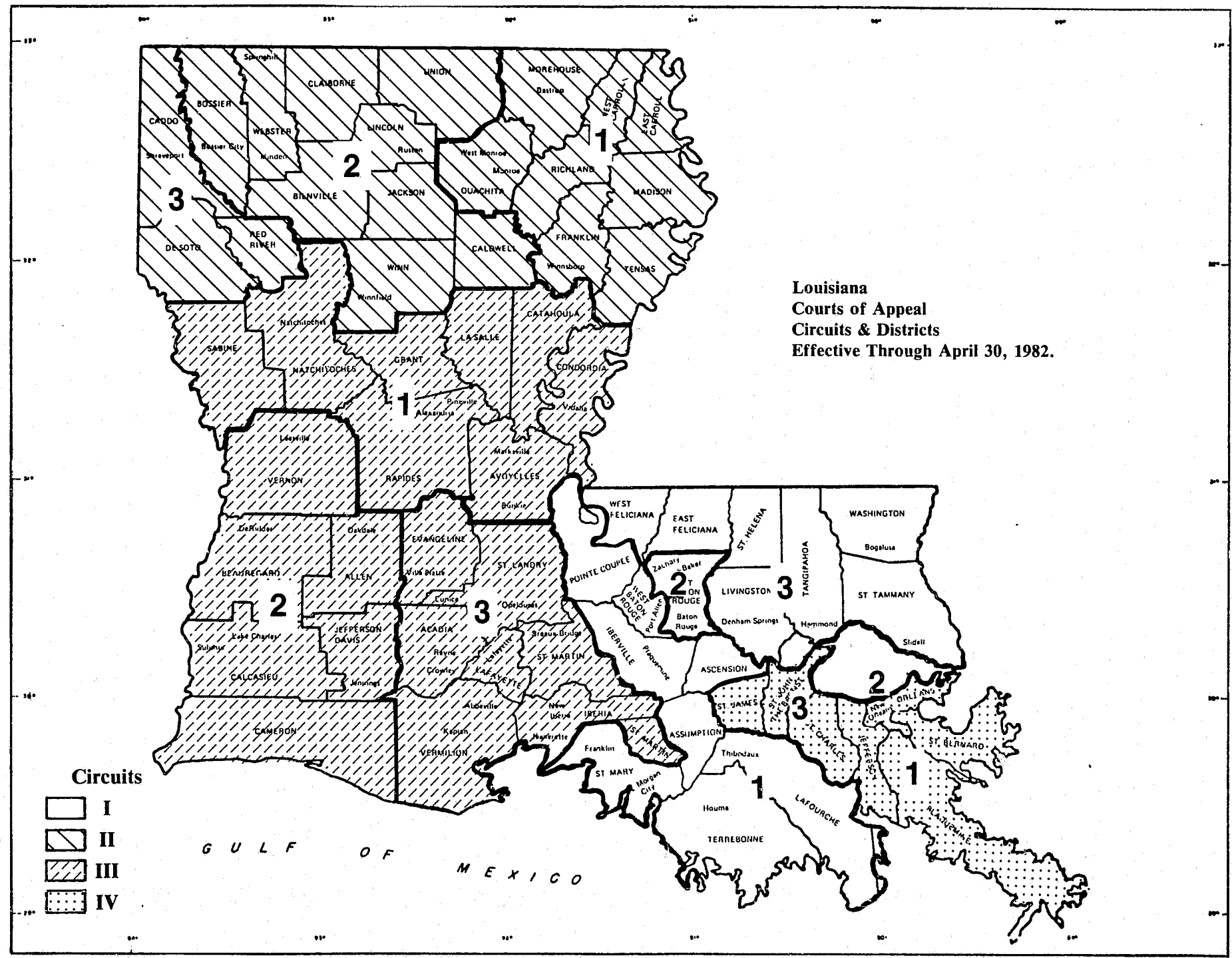
LOUISIANA CITY AND PARISH COURTS  
TRAFFIC CASES PROCESSED

CITY	STATE CASES		ORDINANCE CASES	
	Filed	Term	Filed	Term
Abbeville	768	765	1278	1274
Alexandria	320	320	2608	2608
Ascension	0	0	0	0
Baker	664	593	0	0
Bastrop	0	0	2570	2534
Baton Rouge	0	0	68110	64252
Bogalusa	463	420	1147	1039
Bossier City	1669	1458	4057	3895
Breaux Bridge	563	654	462	479
Bunkie	26	26	780	780
Crowley	100	99	761	772
Denham Springs	1950	1514	3411	3746
De Ridder	0	0	723	491
Eunice	1766	1765	473	474
Franklin	87	72	373	304
Hammond	2127	2555	1974	1914
Houma	217	159	7254	7269
Jeanerette	46	22	307	148
Jeff 1st Par Ct.	44273	39851	1	1
Jeff 2nd Par Ct.	29659	28205	0	0
Jennings	0	0	1139	1050
Kaplan	1201	1144	758	678
Lafayette	1484	1408	24785	24652
Lake Charles	0	0	26365	14219
Leesville	1919	1661	2962	2544
Marksville	0	0	1106	1106
Minden	0	0	420	399
Monroe	0	0	12236	10812
Morgan City	282	293	2362	2392
Natchitoches	160	67	2810	1792
New Iberia	801	786	2922	2934
N.O. 1st City Ct.	0	0	0	0
N.O. 2nd City Ct.	0	0	0	0
N.O. Municipal Ct.	0	0	0	0
N.O. Traffic Ct.	13475	5169	148213	89571
Oakdale	176	180	850	871
Opelousas	2946	1969	1607	902
Pineville	116	100	966	907
Plaquemine	0	0	0	0
Port Allen	900	814	0	0
Rayne	13	15	1016	984
Ruston	1560	1560	1071	1071
Shreveport	3682	3523	35307	35544
Slidell	1308	1113	2495	2431
Springhill	18	18	376	376
Sulphur	6032	5097	3115	2634
Thibodaux	1607	1193	3223	2264
Vidalia	907	869	0	0
Ville Platte	323	173	422	370
West Monroe	0	0	2627	2624
Winnfield	29	22	697	669
Winnsboro	0	0	202	181
Zachary	0	0	515	515
State Total	123637	105652	376866	296472

LOUISIANA CITY AND PARISH COURTS  
JUVENILE CASES PROCESSED

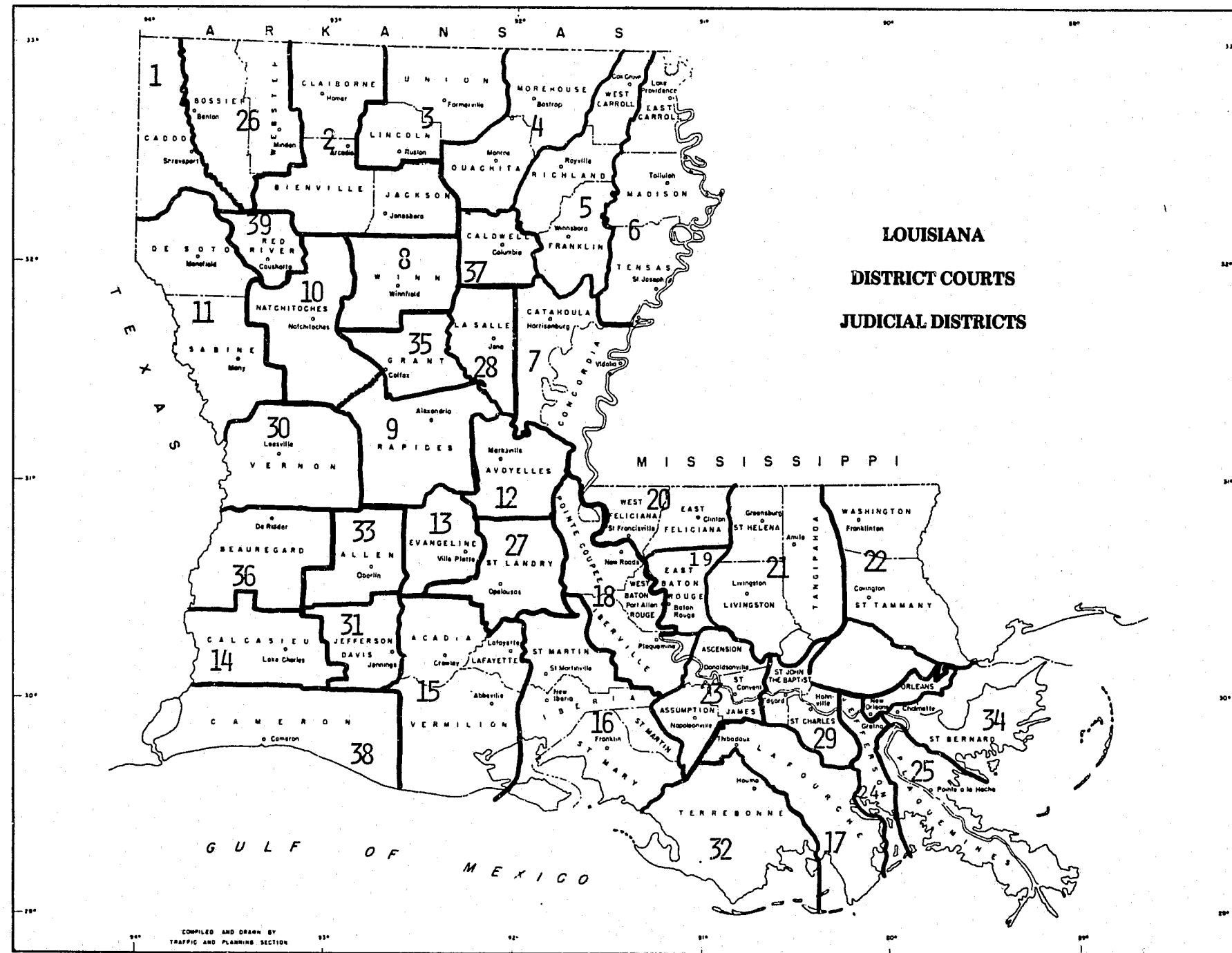
CITY	DELQNCY		NEGLECT		SPECIAL PROC.		TRAFFIC CITY		TRAFFIC STATE	
	Filed	Term	Filed	Term	Filed	Term	Filed	Term	Filed	Term
Abbeville	67	58	0	0	2	2	73	68	0	0
Alexandria	330	330	0	0	0	0	144	144	0	0
Ascension	78	0	108	81	0	0	0	0	0	0
Baker	23	28	0	0	0	0	10	10	0	0
Bastrop	39	50	0	0	0	0	127	127	16	16
Baton Rouge	0	0	0	0	0	0	0	0	0	0
Bogalusa	196	167	207	269	105	71	84	78	30	29
Bossier City	155	152	3	4	4	4	89	92	83	85
Breaux Bridge	38	44	0	0	0	0	18	10	10	4
Bunkie	33	22	0	0	0	0	12	12	0	0
Crowley	132	124	0	1	40	37	59	58	50	45
Denham Springs	188	110	53	59	18	26	124	85	76	45
De Ridder	44	42	0	0	0	0	79	65	0	0
Eunice	117	112	0	0	0	0	108	108	106	94
Franklin	24	23	0	0	0	0	33	24	5	10
Hammond	166	128	42	30	6	5	53	52	120	102
Houma	70	63	64	78	0	0	190	173	10	7
Jeanerette	51	11	0	0	0	0	23	14	4	2
Jeff 1st Par Ct.	0	0	0	0	0	0	0	0	0	0
Jeff 2nd Par Ct.	0	0	0	0	0	0	0	0	0	0
Jennings	0	0	0	0	0	0	77	71	0	0
Kaplan	21	11	0	0	2	0	18	11	24	15
Lafayette	59	59	0	0	0	0	739	737	20	21
Lake Charles	0	0	0	0	0	0	695	695	112	112
Leesville	28	19	1	1	0	0	0	0	0	0
Marksville	31	31	0	0	0	0	20	20	0	0
Minden	47	42	0	0	0	0	0	0	0	0
Monroe	253	159	39	36	0	0	435	433	0	0
Morgan City	95	98	0	0	0	0	0	0	17	19
Natchitoches	113	111	0	0	0	0	9	11	0	0
New Iberia	77	75	0	0	0	0	152	152	32	32
N.O. 1st City Ct.	0	0	0	0	0	0	0	0	0	0
N.O. 2nd City Ct.	0	0	0	0	0	0	0	0	0	0
N.O. Municipal Ct.	0	0	0	0	0	0	0	0	0	0
N.O. Traffic Ct.	0	0	0	0	0	0	0	0	0	0
Oakdale	89	91	17	17	20	27	11	11	21	21
Opelousas	135	146	0	0	36	36	69	69	76	76
Pineville	37	37	40	40	15	15	57	57	9	0
Plaquemine	0	0	0	0	0	0	0	0	0	0
Port Allen	0	0	0	0	0	0	0	0	0	0
Rayne	25	25	8	8	0	0	43	40	20	18
Ruston	22	20	16	16	3	2	54	54	31	31
Shreveport	0	0	0	0	0	0	0	0	0	0
Slidell	176	180	2	2	38	36	265	263	48	47
Springhill	45	45	2	2	0	0	18	18	1	1
Sulphur	10	7	0	0	24	18	144	108	85	73
Thibodaux	95	65	0	0	0	0	0	0	0	0
Vidalia	30	44	0	0	0	0	22	29	0	0
Ville Platte	130	128	1	1	50	50	20	20	8	8
West Monroe	73	62	0	0	0	0	174	178	0	0
Winnfield	0	0	0	0	0	0	3	12	0	0
Winnsboro	0	0	0	0	0	0	0	0	0	0
Zachary	2	0	0	0	0	0	21	26	0	0
STATE TOTAL	3344	2919	603	645	363	329	4272	4115	1005	913

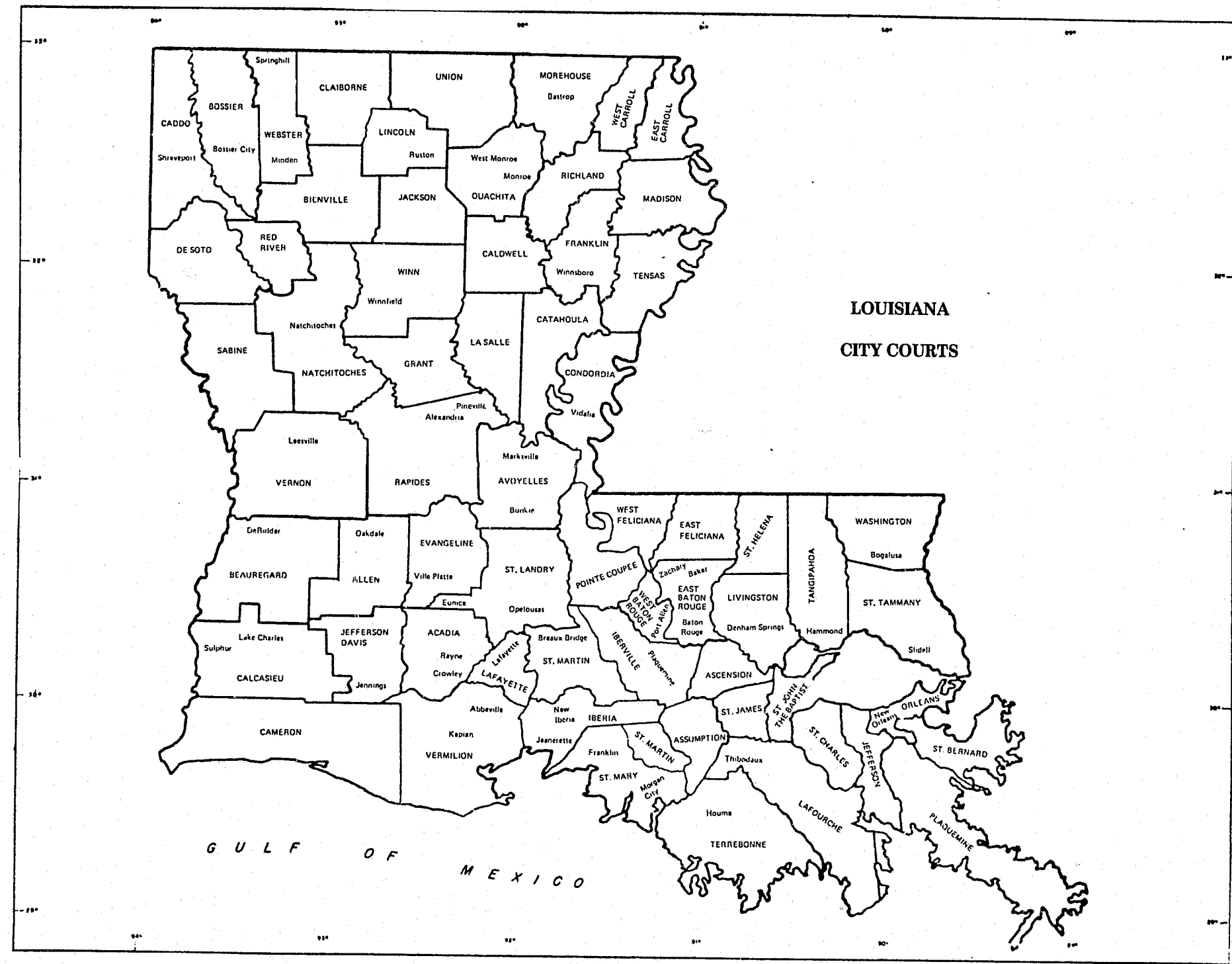










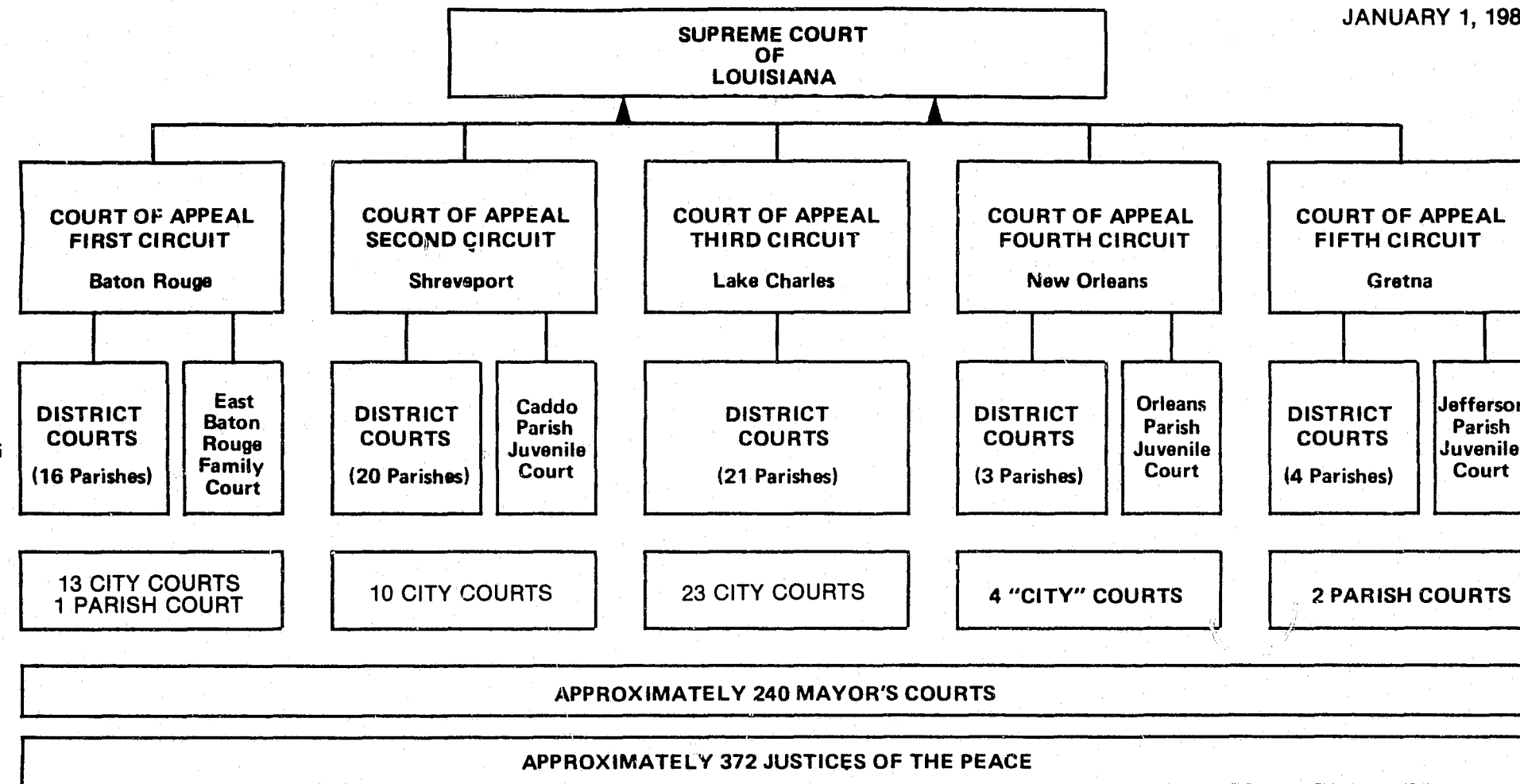


LOUISIANA  
CITY COURTS

GULF OF  
MEXICO

# LOUISIANA COURT STRUCTURE

JANUARY 1, 1983



Number of Justices and Judges:

7	Supreme Court
48	Courts of Appeal
186	District, Family and Juvenile
70	City and Parish Courts
<hr/> 311	Total

IN CAPITAL CASES – WHERE THE DEATH PENALTY HAS BEEN  
IMPOSED – APPEAL IS DIRECTLY TO THE SUPREME COURT  
FROM THE DISTRICT COURT.



**END**

**END**