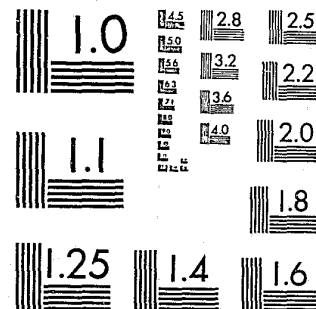


National Criminal Justice Reference Service

**ncjrs**

This microfiche was produced from documents received for inclusion in the NCJRS data base. Since NCJRS cannot exercise control over the physical condition of the documents submitted, the individual frame quality will vary. The resolution chart on this frame may be used to evaluate the document quality.



MICROCOPY RESOLUTION TEST CHART  
NATIONAL BUREAU OF STANDARDS-1963-A

Microfilming procedures used to create this fiche comply with the standards set forth in 41CFR 101-11.504.

Points of view or opinions stated in this document are those of the author(s) and do not represent the official position or policies of the U. S. Department of Justice.

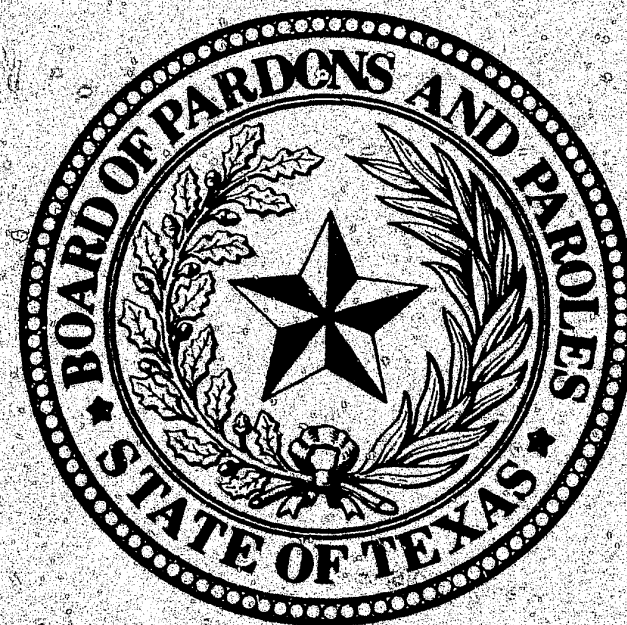
National Institute of Justice  
United States Department of Justice  
Washington, D. C. 20531

11/7/83

CR-5-11  
8-30-83

**TEXAS  
BOARD OF PARDONS  
AND PAROLES  
THIRTY-FIFTH  
ANNUAL  
STATISTICAL REPORT**

September 1, 1981 through August 31, 1982



P. O. Box 13401  
711 Stephen F. Austin Building  
Austin, Texas 78711

89441

BOARD MEMBERS:  
RUBEN M. TORRES, CHAIRMAN  
GEORGE G. KILLINGER, Ph.D., VICE-CHAIRMAN  
CONNIE L. JACKSON, MEMBER

EXECUTIVE DIRECTOR  
JOHN W. BYRD

ADMINISTRATOR  
INTERSTATE PAROLE COMPACT



BOARD OF PARDONS AND PAROLES  
17TH AND CONGRESS  
STEPHEN F. AUSTIN BUILDING, ROOM 711  
P.O. BOX 13401, CAPITOL STATION  
AUSTIN, TEXAS 78711  
(512) 475-4525

August 31, 1982

PAROLE COMMISSIONERS:  
NORTHERN UNITS  
EDWARD O. JOHNSON  
DONN D. WOOLERY  
KEN COLEMAN

2503 LAKE ROAD  
HUNTSVILLE, TEXAS 77340  
(713) 291-2161

KEN CASNER  
201 EAST REAGAN ST.  
PALESTINE, TEXAS 75801  
(214) 723-1068

SOUTHERN UNITS  
HELEN COPITKA  
GLENN T. HECKMANN

P.O. BOX 1207  
ANGLETON, TEXAS 77515  
(713) 849-3031

Honorable William P. Clements, Jr., Governor

Honorable Joe R. Greenhill, Chief Justice  
of the Supreme Court

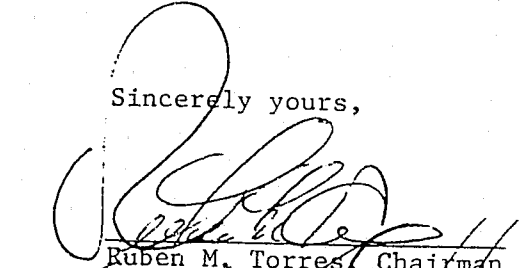
Honorable John F. Onion, Jr., Presiding Judge  
of the Court of Criminal Appeals

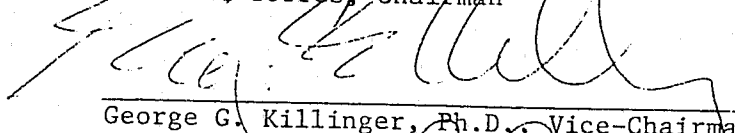
Members of the Senate and House of Representatives  
of the State of Texas

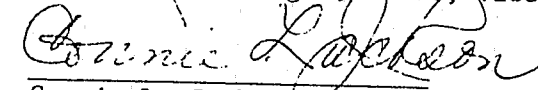
Gentlemen:

In compliance with the provisions of Article 42.12, Section 13  
of the Code of Criminal Procedure of Texas, we respectfully submit  
the Annual Report with statistical and other data relating to the  
work of the Board of Pardons and Paroles for the fiscal year  
ending August 31, 1982.

Sincerely yours,

  
Ruben M. Torres, Chairman

  
George G. Killinger, Ph.D., Vice-Chairman

  
Connie L. Jackson, Member

89441  
U.S. Department of Justice  
National Institute of Justice

This document has been reproduced exactly as received from the  
person or organization originating it. Points of view or opinions stated  
in this document are those of the authors and do not necessarily  
represent the official position or policies of the National Institute of  
Justice.

Permission to reproduce this copyrighted material has been  
granted by  
Texas Board of Pardons  
and Paroles

to the National Criminal Justice Reference Service (NCJRS).

Further reproduction outside of the NCJRS system requires permis-  
sion of the copyright owner.



August 31, 1982

TEXAS BOARD OF PARDONS AND PAROLES

BOARD MEMBERS

Ruben M. Torres  
Chairman  
Appointed by  
Honorable Dolph Briscoe  
Governor  
State of Texas  
Member since 1979

Connie L. Jackson  
Appointed by  
Honorable Joe R. Greenhill  
Chief Justice  
Texas Supreme Court  
Member since 1977

George G. Killinger, Ph.D.  
Appointed by  
Honorable John F. Onion  
Presiding Judge  
Court of Criminal Appeals  
Member since 1977

Chris Mealy, Administrator of Interstate Probation  
and Parole Compact

PAROLE COMMISSIONERS

Ken Casner  
Palestine

Glen Heckmann  
Angleton

Juan R. Perez  
Palestine

Kenneth Coleman  
Huntsville

Ronald W. Jackson  
Huntsville

Stennett D. Posey  
Catesville

Helen Copitka  
Angleton

Edward O. Johnson  
Huntsville

Donn Woolery  
Huntsville

STAFF

John W. Byrd, Executive Director

Robert Tapscott  
Director of Field  
Services

Cecil Simpson  
Director of Institutional  
Services

Gladys Sommers  
Director of  
Staff Services

Henry Johnson  
Director of Personnel

E. E. Hagedorn  
Director of  
Budget and Planning

David Ritter  
Director of  
Computer Services

Charls Walker  
General Counsel

George Cross  
Director of Board  
and Commissioner Services

Mike Roach  
Director of  
Information Services

TEXAS BOARD OF PARDONS AND PAROLES

P.O.Box 13401

711 Stephen F. Austin Building

17th and Congress

Austin, Texas 78711

Phone: (512) 475-4525

TABLE OF CONTENTS

	Page
Letter of Transmittal.....	i
Current Board and Staff .....	ii
PART I SUMMARY INTRODUCTION	
Function of the Agency .....	3
The Board .....	3
Parole Commissioners .....	4
Parole Panel .....	4
The Staff of the Agency.....	4
PART II EXPENDITURE ANALYSIS	
Expenditures and Encumbrances by Activity .....	9
Grant Expenditures and Encumbrances.....	9
Expenditures per Releasee.....	10
PART III STATISTICAL DATA	
Summary Chart of Parole Panel Activity in Fiscal Year .....	13
Table 1—Administrative Activity during Fiscal Year.....	15
Table 2—Classification of Parole Actions in Fiscal Year .....	15
Table 3—Parole Panel Actions over a Five-year Period.....	16
Table 4—Revocation of Paroles, Conditional Pardons and Mandatory Supervision Cases Applicable to Inmates Released during the Fiscal Year .....	17
Table 5—Revocation of Paroles, Conditional Pardons and Mandatory Supervision Status Applicable to All Releasees under Board's Jurisdiction during Fiscal Year.....	17
Table 6—Revocation of Paroles and Mandatory Supervision Status Applicable to All Releasees under Active Field Supervision during Fiscal Year .....	17
Table 7—Revocation of Paroles, Conditional Pardons and Mandatory Supervision Status Applicable to Average Number under Board's Jurisdiction during Fiscal Year .....	18
Table 8—Revocation of Paroles and Mandatory Supervision Status Applicable to Average Number of Releasees under Active Field Supervision during Fiscal Year.....	18

Table 9—Revocation of Paroles and Mandatory Supervision Status Applicable to Average Number of Releasees Not Actively Supervised during Fiscal Year .....	18
Table 10—Revocation of Paroles, Conditional Pardons and Mandatory Supervision Status during 35-year Period .....	19
Table 11—Parole Revocation Data for a Five-year Period .....	19
Table 12—Mandatory Supervision Revocation Data for a Five-year Period .....	19
Table 13—Causes for Revocations This Fiscal Year and Length of Time Inmates Had Remained on Parole or Conditional Pardon before Revocation .....	20
Table 14—Causes for Revocations This Fiscal Year and Length of Time Inmates Had Remained on Mandatory Supervision before Revocation .....	20
Table 15—Parole-related Activity Part A: Actions on Parole Panel Recommendations Submitted to Governor during Fiscal Year .....	21
Part B: Actions Taken This Fiscal Year on Parole Panel Recommendations Submitted to Governor Prior to This Fiscal Year .....	22
Table 16—Mandatory Supervision-related Activity Part A: Actions on Parole Panel Recommendations Submitted to Governor during Fiscal Year .....	23
Part B: Actions Taken This Fiscal Year on Parole Panel Recommendations Submitted to Governor prior to this Fiscal Year .....	23
Table 17—Executive Clemency-related Activity Actions on Executive Clemency Recommendations Submitted to Governor during Fiscal Year .....	24
Table 18—Number of Releasees under Jurisdiction of Board at End of Fiscal Year .....	24
Table 19—Number of Releasees under Jurisdiction of Board for a Five-year Period .....	25

Table 20—Number of Releasees under Active Supervision of Texas Parole Officers at End of Fiscal Year .....	25
Table 21—Number of Releasees under Active Supervision of Texas Parole Officers for a Five-year Period .....	25
Table 22—Interstate Compact Case Status at End of Fiscal Year .....	25
Table 23—Interstate Compact Case Status over a Five-year Period .....	26
Table 24—Breakdown of Texas Department of Corrections Releases over a Five-year Period .....	26
Table 25—Previous Criminal Record of Inmates Released on Parole or Conditional Pardon during the Fiscal Year .....	27
Table 26—Previous Criminal Record of Inmates Released on Mandatory Supervision during the Fiscal Year .....	29
Table 27—Age of Inmates Released on Parole or Conditional Pardon during the Fiscal Year .....	30
Table 28—Age of Inmates Released on Mandatory Supervision during the Fiscal Year .....	31
Table 29—Sex of Inmates Released on Parole or Conditional Pardon during the Fiscal Year .....	31
Table 30—Sex of Inmates Released on Mandatory Supervision during the Fiscal Year .....	31
Table 31—Education of Inmates Released on Parole or Conditional Pardon during the Fiscal Year .....	32
Table 32—Education of Inmates Released on Mandatory Supervision during the Fiscal Year .....	33
Table 33—Inmates Released on Parole or Conditional Pardon during the Fiscal Year Classified According to Type of Crime Committed and Length of Sentence Received .....	34
Table 34—Inmates Released on Mandatory Supervision during the Fiscal Year Classified According to Type of Crime Committed and Length of Sentence Received .....	35

Table 35—Inmates Whose Paroles or Conditional Pardons Were Revoked during the Fiscal Year Classified According to Crime Committed and Length of Sentence Received.....	36
Table 36—Inmates Whose Mandatory Supervision was Revoked during the Fiscal Year Classified According to Crime Committed and Length of Sentence Received.....	37
Table 37—Inmates Released on Parole or Conditional Pardon during the Fiscal Year Classified According to Length of Sentence Received and Percentage of Time Accredited to Sentence at Time of Release .....	38
Table 38—Disposition of Out-of-State Applications for Acceptance of Parolee Supervision in Texas Classified According to Requesting State.....	39
Table 39—Present Status of Inmates Released from the Texas Department of Corrections on Parole or Conditional Pardon during 35-year Period.....	40
Table 40—Present Status of Inmates Released from the Texas Department of Corrections on Mandatory Supervision during Five-year Period .....	42
Map Showing Distribution of Parolees Assigned to Texas Counties as of August 31, 1982.....	43
Map Showing Distribution of Mandatory Supervision Releasees Assigned to Texas Counties as of August 31, 1982.....	44
Glossary .....	45

## PART I SUMMARY INTRODUCTION TO THE BOARD OF PARDONS AND PAROLES

## Summary Introduction to the Board of Pardons and Paroles

### FUNCTION OF THE AGENCY

The Texas Board of Pardons and Paroles is the constitutional authority for the State of Texas which performs two broad functions: (1) administering the Statewide Parole and Mandatory Supervision System in accordance with Article 42.12, Code of Criminal Procedure (Adult Probation, Parole and Mandatory Supervision Law); and (2) investigating and recommending acts of executive clemency by the governor as provided by the Texas Constitution, Article IV, Section 11 and the Code of Criminal Procedure, Articles 42.12, 48.01 and 40.04.

Parole functions include determining which prisoners are to be paroled from institutions operated by the Texas Department of Corrections (TDC), establishing the conditions of parole, investigating and supervising all prisoners released on parole, conducting parole revocation hearings and recommending appropriate disposition to the governor, establishing necessary parole policy within the statutory limits and carrying out the provisions of the Interstate Parole and Probation Compact. Both parole and executive clemency acts require the affirmative action of the Board of Pardons and Paroles and the governor before relief can be given.

Executive clemency includes emergency reprieves of execution of the death penalty, commutations of sentence from death to lesser punishment, commutations of prison sentences or fines or both, full pardons, restorations of civil rights lost as a result of felony convictions, conditional pardons, trial reprieves of all jail sentences, remissions of bond forfeitures and restorations of the right to drive and operate a motor vehicle.

The system of mandatory supervision, created by the 65th Legislature, provides a period of post-prison supervision for all other releasees of the Texas Department of Corrections who are not otherwise released to parole or conditional pardon and who have not completed the full calendar time on their sentence. A prisoner released to mandatory supervision is deemed as if on parole. Mandatory supervision affects only those felons whose offenses were committed on or after August 29, 1977.

During the last four months of fiscal year 1981 — May through August — the Board paroled an additional 1,564 "conditional parolees" under an accelerated release program funded by a grant from the Criminal Justice Division of the Governor's Office. The program was instituted to meet federal court orders to effect a reduction in the Texas Department of Corrections' inmate population. The informal term "conditional parolee" is used to designate these parolees because it was a stipulated condition of the parole that the inmate could be paroled to a halfway house only.

A conditional work furlough parole program was enacted by the 67th Legislature effective September 1, 1981. Under the provisions of the Act, selected inmates could be released to halfway houses on conditional work furlough parole, provided that they obtained employment and would be able to pay for a) the cost of supervision, b) the cost of being quartered in a halfway house, c) restitution to their victims, and d) support of their dependents.

### THE BOARD

The Board of Pardons and Paroles is composed of three full-time, salaried members. One is appointed by the governor, one by the chief justice of the Texas Supreme Court and one by the presiding judge of the Court of Criminal Appeals as provided in Article 4, Section 11 of the Texas Constitution. All appointments must be confirmed by the Senate and have a concurrence of two-thirds of the members present. All are for overlapping six-year terms of office. Members must have been residents and citizens of the state for not less than two years immediately preceding appointment. The Board is the administrative head of the agency and provides the rules and policies of the agency.

The Board is in session Monday through Friday of each week at the agency headquarters, 711 Stephen F. Austin Building, Austin, Texas, and convenes otherwise at the call of the chairman. All meetings of the Board are conducted in compliance with the Open Meetings Act. All minutes of the Board and

decisions relating to parole, pardon and clemency are matters of public record. However, information concerning individuals applying for or on parole or the identity of other individuals connected with a parole or clemency case is privileged and is not public information.

### **PAROLE COMMISSIONERS**

Article 42.12, C.C.P., provides for the employment of no fewer than six commissioners in matters of parole decisions and mandatory supervision revocations. Parole commissioners do not exercise authority in acts of executive clemency nor in the administration of the agency. They are subject to the rules and regulations of the agency as established by the Board. Nine commissioners are presently employed by the Board, with two located in Palestine, one in Gatesville, two in Angleton and four in Huntsville. Parole commissioners are full-time, salaried employees of the state.

### **PAROLE PANEL**

In matters of parole selection, release on mandatory supervision and revocation, the Board members and parole commissioners may act in panels of three persons as provided in Art. 42.12, C.C.P. Panel composition is designated by the Board. A majority of each panel constitutes a quorum for the transaction of its business, and its decision is by majority vote. The parole panel may recommend the granting or denying of parole and may conduct parole and mandatory supervision revocation hearings.

### **THE STAFF OF THE AGENCY**

The staff of the agency, totaling over 700 employees, is divided into three areas of responsibility headed by an executive director.

#### **The Executive Director**

The executive director of the agency is responsible for the operation and administration of the various functions of the agency. He is appointed by the Board and serves at its pleasure.

#### **Institutional Services Division**

The Institutional Services Division is composed of a director and staff responsible for providing direct pre-parole services to the inmate population of TDC. Institutional parole officers serve all units of the Texas Department of Corrections, prepare pre-parole summaries on inmates eligible for parole consideration and offer counseling and assistance to prospective parolees. The three institutional parole offices are located in Huntsville, Angleton, and Palestine. The Division is also responsible for the agency's halfway house program through its community services section.

#### **Field Services Division**

The Field Services Division is composed of a director and staff who are responsible for providing supervision and assistance to parolees and mandatory supervision releasees and for conducting pre-parole investigations of eligible inmates. Texas is divided into eight geographical regions for the purposes of providing supervision and parole services. The eight regional offices are located in Dallas, Houston, San Antonio, Lubbock, Fort Worth, Angleton, Tyler and Waco. More than 330 district parole officers located at the 37 district offices throughout the state are responsible for supervision of over 19,000 active parolees and mandatory supervision releasees in the state, including compact parolees from other

states residing in Texas. District parole officers are additionally responsible for reporting parole violations that may lead to the revocation of parole or mandatory supervision.

#### **Staff Services Division**

The Staff Services Division is composed of a director and subordinate staff who provide all the functions necessary to support the operations of the agency. Primary among these are the parole, mandatory supervision and executive clemency clerical functions in the compilation and maintenance of over 71,000 active case files, the preparation of all cases for review by the commissioners and Board members plus the correspondence related to the processing of the cases. Other support functions include accounting and fiscal services, purchasing, warehousing, mail and messenger services, business management, planning and central reception, and data processing.

**PART II  
EXPENDITURE DATA**

**EXPENDITURES AND ENCUMBRANCES BY ACTIVITY  
FISCAL YEAR 1982  
FUND I**

ACTIVITY		EXPENDED/ ENCUMBERED
1. Administration		\$ 779,301.10
a. Board member salaries	\$124,499.88	
b. Commissioner salaries	245,830.24	
c. Interstate compact	1,797.73	
d. Administrative services	407,173.25	
2. Support services		1,484,105.19
3. Executive clemency		111,840.04
4. Parole selection		1,496,158.80
5. Parole supervision		8,121,286.13
6. Special Community Services		6,654,631.26
	<b>TOTAL STATE FUNDS</b>	<u><u>\$18,647,322.52</u></u>

**GRANT EXPENDITURES AND ENCUMBRANCES  
GOVERNOR'S CRIMINAL JUSTICE DIVISION GRANTS  
FISCAL YEAR 1982**

CJD GRANTS	EXPENDED/ ENCUMBERED
1. Halfway House Program	\$92,886.68
2. Aid in Determining Disposition	44,106.00
3. Training	12,077.73
4. Terminal Equipment	7,638.88
	<b>TOTAL GRANT FUNDS</b>
	<u><u>\$156,709.29</u></u>



**EXPENDITURES PER RELEASEE  
STATE FUNDS  
FISCAL YEAR 1982**

**JURISDICTION**

Average number parolees under jurisdiction:		19,094
Average number mandatory supervision releasees under jurisdiction:		<u>4,768</u>
	<b>TOTAL</b>	<b>23,862</b>

State funds expended = \$18,647,322.52

Annual expenditures per releasee under jurisdiction = \$781.47

**SUPERVISION**

Average number parolees under supervision:		13,401
Average number mandatory supervision releasees under supervision:		<u>3,928</u>
	<b>TOTAL</b>	<b>17,329</b>

State funds expended for supervision = \$8,121,286.13

Annual expenditures per releasee under supervision = \$468.65

**PART III  
STATISTICAL DATA**

**SUMMARY CHART OF PAROLE PANEL  
ACTIVITY DURING THE FISCAL YEAR  
ENDING AUGUST 31, 1982**

<b>A. Parole Actions (Tables 2, 3 &amp; 15)</b>	
1. Number cases considered .....	27,472
2. Number of paroles/conditional pardons recommended to governor <sup>1</sup> .....	10,157
3. Number of inmates paroled/conditionally pardoned .....	7,504
<b>B. Mandatory Supervision Actions (Table 16)</b>	
1. Number of inmates released to mandatory supervision <sup>5</sup> .....	4,522
<b>C. Parole Reinstatement Actions (Table 15)</b>	
1. Number of reinstatement cases considered .....	1
2. Number of reinstatements recommended to the governor .....	1
3. Number of paroles reinstated .....	1
<b>D. Parole Pre-Revocation Actions (Table 15)</b>	
1. Number of pre-revocation warrant considerations <sup>2</sup> .....	4,182
2. Number of pre-revocation warrant issuances recommended to the governor <sup>3</sup> .....	4,182
3. Number of pre-revocation warrants issued .....	4,162
4. Number of pre-revocation warrants withdrawn .....	1,042
<b>E. Mandatory Supervision Pre-Revocation Actions (Table 16)</b>	
1. Number of pre-revocation warrant considerations <sup>2</sup> , <sup>6</sup> .....	1,541
2. Number of pre-revocation warrant issuances recommended to the governor <sup>6</sup> .....	1,541
3. Number of pre-revocation warrants issued <sup>6</sup> .....	1,519
4. Number of pre-revocation warrants withdrawn .....	322
<b>F. Parole Revocation Actions (Table 4-15)</b>	
1. Number of revocations recommended to the governor .....	1,849
2. Number of paroles revoked .....	1,860
<b>G. Mandatory Supervision Revocation Actions (Tables 4-14 &amp; 16)</b>	
1. Number of revocations recommended to the governor .....	667
2. Number of mandatory supervision cases revoked .....	668

H. Other Parole Panel Considerations	
1. Special administrative review considerations <sup>3</sup> .....	17
2. Other parole administrative reviews <sup>4</sup> .....	5,191
3. Other mandatory supervision administrative reviews <sup>4</sup> .....	1,356
I. Executive Clemency Actions (Table 17)	
1. Number of executive clemency cases considered.....	2,329
2. Number of executive clemency cases recommended to the governor .....	200
3. Number of executive clemency acts granted by the governor .....	167
J. Conditional Work Furlough Parole Actions	
1. Number of cases considered.....	247
2. Number of cases recommended to governor .....	11
3. Number of inmates paroled.....	11
4. Number of pre-revocation warrants considered.....	1
5. Number of pre-revocation warrant issuances recommended to governor .....	1
6. Number of pre-revocation warrants issued.....	1

<sup>1</sup>The conditional pardons included in the parole data are conditional pardons to the United States Immigration Service for foreign nationals.

<sup>2</sup>The pre-revocation warrant consideration data contains only those considerations that resulted in a positive recommendation to the governor.

<sup>3</sup>A special administrative case is one reviewed by a parole panel to determine if the case merits special review because of new and pertinent material presented.

<sup>4</sup>These data contain, in addition to other considerations, those pre-revocation warrant considerations that resulted in a negative finding; no recommendation was made to the governor.

<sup>5</sup>Includes 1,514 early mandatory supervision cases.

<sup>6</sup>Includes 110 early mandatory supervision cases.

TABLE 1  
ADMINISTRATIVE ACTIVITY DURING FISCAL YEAR  
ENDING AUGUST 31, 1982

	Year's Totals	Monthly Average
Visitors before the Board .....	810	68
Case-connected.....	655	55
Miscellaneous.....	155	13
Total mail handled by Board .....	226,761	18,897
Mail received .....	96,028	8,002
Mail sent.....	130,733	10,894

TABLE 2  
CLASSIFICATION OF PAROLE ACTIONS IN FISCAL  
YEAR ENDING AUGUST 31, 1982

Review Classification	Number Considered	Number FI	Number Set-off	Number Serve-all
Initial Reviews.....	14,555 (100 %)	5,527 (38 %)	6,751 (46 %)	2,277 (16 %)
Subsequent reviews.....	12,917 (100 %)	4,884 (38 %)	5,604 (43 %)	2,429 (19 %)
TOTAL REVIEWS.....	27,472 (100 %)	10,411 (38 %)	12,355 (45 %)	4,706 (17 %)

TABLE 3

**PAROLE PANEL ACTIONS  
OVER A FIVE-YEAR PERIOD**

Action	FY 78	FY 79	FY 80	FY 81	FY 82	5-Year Avg. 1978-1982
Cases.....	16,922 (100 %)	20,691 (100 %)	19,432 (100 %)	22,797 (100 %)	27,472 (100 %)	21,463 (100 %)
FI .....	5,639 (33 %)	10,544 (51 %)	8,249 (42 %)	9,828 (43 %)	10,411 (38 %)	8,934 (42 %)
Set-off .....	8,163 (48 %)	7,670 (37 %)	7,853 (41 %)	9,469 (42 %)	12,355 (45 %)	9,102 (42 %)
Serve-all .....	3,120 (19 %)	2,477 (12 %)	3,330 (17 %)	3,500 (15 %)	4,706 (17 %)	3,427 (16 %)
Paroled <sup>1</sup> .....	4,948 <sup>2</sup> (29 %)	7,741 <sup>2</sup> (37 %)	5,018 <sup>2</sup> (26 %)	7,494 <sup>2</sup> (33 %)	7,504 <sup>2</sup> (27 %)	6,541 (30 %)

<sup>1</sup>Includes conditional pardons to United States Immigration Service.

<sup>2</sup>Number of parolees released (reinstatements not included).

TABLE 4

**REVOCATION OF PAROLES, CONDITIONAL PARDONS AND MANDATORY  
SUPERVISION CASES APPLICABLE TO INMATES RELEASED DURING THE  
FISCAL YEAR ENDING AUGUST 31, 1982**

Status	No. Released FY 82	Revoked FY 82	Percentage Revoked
Parole .....	7,516 <sup>1</sup>	104	1.4 %
Mandatory Supervision .....	4,522	84	1.9 %

<sup>1</sup>Includes 11 conditional work furlough parolees.

TABLE 5

**REVOCATION OF PAROLES, CONDITIONAL PARDONS AND MANDATORY  
SUPERVISION STATUS APPLICABLE TO ALL RELEASEES UNDER BOARD'S  
JURISDICTION DURING ALL OR PART OF  
FISCAL YEAR ENDING AUGUST 31, 1982**

Status	No. Releasees Under Jurisdiction During FY 82	Releasees Revoked FY 82	Percentage Revoked
Parole .....	25,331	1,860	7.3 %
Mandatory Supervision .....	8,370	668	8.0 %

TABLE 6

**REVOCATION OF PAROLES AND MANDATORY SUPERVISION STATUS  
APPLICABLE TO ALL RELEASEES UNDER ACTIVE FIELD SUPERVISION  
DURING ALL OR PART OF FISCAL YEAR ENDING AUGUST 31, 1982**

Status	No. Releasees Under Supervision During FY 82	No. of Field Supervised Releasees Revoked FY 82	Percentage Revoked
Parole .....	20,167	1,814	9.0 %
Mandatory Supervision .....	7,889	663	8.4 %



TABLE 7

REVOCATION OF PAROLES, CONDITIONAL PARDONS AND MANDATORY SUPERVISION STATUS APPLICABLE TO AVERAGE NUMBER UNDER BOARD'S JURISDICTION DURING THE FISCAL YEAR ENDING AUGUST 31, 1982

Status	Average No. Under Jurisdiction During Fiscal Year	No. Revoked	Percentage Revoked
Parole.....	19,094	1,860	9.7%
Mandatory Supervision .....	4,768	668	14.0%

TABLE 8

REVOCATION OF PAROLES AND MANDATORY SUPERVISION STATUS APPLICABLE TO AVERAGE NUMBER OF RELEASEES UNDER ACTIVE FIELD SUPERVISION DURING FISCAL YEAR ENDING AUGUST 31, 1982

Status	Average No. Under Active Supervision During fiscal Year	No. Revoked	Percentage Revoked
Parole.....	13,065	1,814	13.9%
Mandatory Supervision .....	4,129	663	16.1%

TABLE 9

REVOCATION OF PAROLES AND MANDATORY SUPERVISION STATUS APPLICABLE TO AVERAGE NUMBER OF RELEASEES NOT ACTIVELY SUPERVISED DURING THE FISCAL YEAR ENDING AUGUST 31, 1982

Status	Average No. of Releasees in a Non- supervised Status During Fiscal Year	No. Revoked	Percentage Revoked
Parole.....	6,029	46	.76%
Mandatory Supervision .....	638	5	.78%

TABLE 10

REVOCATION OF PAROLES, CONDITIONAL PARDONS AND MANDATORY SUPERVISION STATUS APPLICABLE TO INMATES RELEASED DURING THE 35-YEAR PERIOD ENDING AUGUST 31, 1982

Status	No. Released	No. Revoked	Percentage Revoked
Parole.....	100,572 <sup>1</sup>	24,455	24.3%
Mandatory Supervision .....	11,638	1,270	10.9%

<sup>1</sup>Includes reinstatements

TABLE 11

PAROLE REVOCATION DATA FOR A FIVE-YEAR PERIOD

Item	FY 78	FY 79	FY 80	FY 81	FY 82
No. under jurisdiction for all or part of year .....	17,597	20,288	20,509	22,636	25,331
No. paroles revoked during year .....	1,465	1,266	1,682	1,576	1,860
Percentage revoked .....	8.3%	6.2%	8.2%	7.0%	7.3%

TABLE 12

MANDATORY SUPERVISION REVOCATION DATA FOR A FIVE-YEAR PERIOD

Item	FY 78	FY 79	FY 80	FY 81	FY 82
No. under jurisdiction for all or part of year .....	10	746	2,844	5,429	8,370
No. mandatory supervision revoked during year .....	0	16	162	424	668
Percentage revoked .....	0	2.1%	5.7%	7.8%	8.0%

TABLE 13

CAUSES FOR 1,860 REVOCATIONS THIS FISCAL YEAR AND LENGTH  
OF TIME INMATES HAD REMAINED ON PAROLE OR CONDITIONAL  
PARDON BEFORE REVOCATION

	To Texas Prison	To Other Prison	Other Violations, No Conviction	Total
Less than 1 year	248	4	243	495 <sup>1</sup>
More than 1 year, less than 2 years	587	11	223	821
More than 2 years, less than 3 years	221	13	99	333
More than 3 years, less than 4 years	83	9	44	136
More than 4 years, less than 5 years	20	1	14	35
More than 5 years, less than 6 years	14	0	4	18
More than 6 years, less than 7 years	8	0	1	9
More than 7 years, less than 8 years	3	1	1	5
More than 8 years, less than 9 years	3	0	3	6
More than 9 years, less than 10 years	0	0	1	1
More than 10 years	1	0	0	1
<b>TOTAL PAROLES AND CONDITIONAL PARDONS REVOKED</b>	<b>1,188</b>	<b>39</b>	<b>633</b>	<b>1,860</b>

<sup>1</sup>104 of these revocations were applicable to inmates released this fiscal year.

TABLE 14

CAUSES FOR 668 REVOCATIONS THIS FISCAL YEAR AND LENGTH OF TIME  
INMATES HAD REMAINED ON MANDATORY SUPERVISION  
BEFORE REVOCATION

	To Texas Prison	To Other Prison	Other Violations, No Conviction	Total
Less than 1 year	176	0	96	272 <sup>1</sup>
More than 1 year, less than 2 years	252	10	104	366
More than 2 years, less than 3 years	21	0	7	28
More than 3 years, less than 4 years	1	0	1	2
More than 4 years, less than 5 years	0	0	0	0
More than 5 years, less than 6 years	0	0	0	0
More than 6 years, less than 7 years	0	0	0	0
More than 7 years, less than 8 years	0	0	0	0
More than 8 years, less than 9 years	0	0	0	0
More than 9 years, less than 10 years	0	0	0	0
More than 10 years	0	0	0	0
<b>TOTAL MANDATORY SUPERVISION CASES REVOKED</b>	<b>450</b>	<b>10</b>	<b>208</b>	<b>668</b>

<sup>1</sup>84 of these revocations were applicable to inmates released this fiscal year.

TABLE 15

## PAROLE-RELATED ACTIVITY

## PART A:

ACTIONS ON PAROLE PANEL RECOMMENDATIONS SUBMITTED TO  
THE GOVERNOR DURING FISCAL YEAR ENDING AUGUST 31, 1982

Description	Number Recom- mended	Approved by Governor	Refused by Governor	With- drawn by Board	Number Cases in Process	Number Actions Effected
<b>Paroles:</b>						
Within state	9,440	7,488	1,456	385	580	6,665 <sup>1</sup>
Out-of-state	557	413	90	22	168	284 <sup>1</sup>
Out-of-country						
conditional pardons	160	136	15	6	56	62 <sup>1 5</sup>
<b>Total paroles</b>	<b>10,157</b>	<b>8,037</b>	<b>1,561</b>	<b>413<sup>7</sup></b>	<b>804<sup>6</sup></b>	<b>7,011<sup>1</sup></b>
<b>Reinstatements of parole</b>	<b>1</b>	<b>1</b>	<b>0</b>	<b>0</b>	<b>0</b>	<b>1<sup>1</sup></b>
<b>Pre-revocation warrants:</b>						
Pre-revocation warrants	4,182	4,094	0	1,042 <sup>9</sup>	88	4,094 <sup>3</sup>
Emergency arrest warrants	2,109	2,109	0	65	0	2,109 <sup>8</sup>
<b>Parole revocations</b>	<b>1,849</b>	<b>1,789</b>	<b>0</b>	<b>0</b>	<b>60</b>	<b>1,789<sup>4</sup></b>
<b>TOTAL PAROLE- RELATED ACTIONS</b>	<b>16,189</b>	<b>13,921</b>	<b>1,561</b>	<b>1,455</b>	<b>952</b>	<b>12,895</b>

Note: The following Fiscal Year 1982 paroles granted by the governor were not effected:

Number	Classifications
165	Within state
9	Out-of-state
21	Out-of-country conditional pardons
195	TOTAL

NOTE: To obtain total listed actions effected during the fiscal year the actions in Table 15A and 15B must be added together. To obtain total parole and conditional pardon releases the parole total must be added to the reinstatement total.

TABLE 15

## PAROLE-RELATED ACTIVITY

## PART B:

ACTIONS TAKEN DURING THE FISCAL YEAR ENDING AUGUST 31, 1982, ON  
PAROLE PANEL RECOMMENDATIONS SUBMITTED TO THE GOVERNOR PRIOR  
TO THIS FISCAL YEAR

Description	Number Recom- mended	Approved by Governor	Refused by Governor	With- drawn by Board	Number Cases in Process	Actions Effectuated
Paroles:						
Within state	575	69	81	21	0	404 <sup>1</sup>
Out-of-state	88	16	9	2	0	61 <sup>1</sup>
Out-of-country						
conditional pardons	30	0	2	0	0	28 <sup>1 5</sup>
Total paroles	693	85	92	23	0	493 <sup>1</sup>
Pre-revocation warrants	68	68	0	0	0	68 <sup>3</sup>
Parole revocations	71	71	0	0	0	71 <sup>4</sup>
TOTAL PAROLE- RELATED ACTIONS	832	224	92	23	0	632

Footnotes to Table 15A and B

<sup>1</sup>Number of inmates paroled or conditionally pardoned.

<sup>2</sup>Number of paroles reinstated.

<sup>3</sup>Number of pre-revocation warrants issued.

<sup>4</sup>Number of paroles revoked.

<sup>5</sup>The conditional pardons included in parole data are conditional pardons to the United States Immigration Service in the case of foreign nationals.

<sup>6</sup>Includes 412 cases also shown in "Approved by Governor" column.

<sup>7</sup>Includes 98 cases also shown in "Approved by Governor" column.

<sup>8</sup>Emergency arrest warrants are non-additive; they are included in the pre-revocation counts.

<sup>9</sup>Includes 357 withdrawals of warrants granted in previous years.

TABLE 16

## MANDATORY SUPERVISION-RELATED ACTIVITY

## PART A:

ACTIONS ON MANDATORY SUPERVISION RECOMMENDATIONS SUBMITTED  
TO THE GOVERNOR DURING FISCAL YEAR ENDING AUGUST 31, 1982

Description	Number Recom- mended	Approved by Governor	Refused by Governor	With- drawn by Board	Number Cases in Process	Number Actions Effectuated
Releases:						
Within state	—	—	—	—	—	4,400 <sup>1</sup>
Out-of-state	—	—	—	—	—	117 <sup>1</sup>
Out-of-country	—	—	—	—	—	5 <sup>1</sup>
Total releases	—	—	—	—	—	4,522 <sup>1</sup>
Pre-revocations:						
Pre-revocation warrants	1,541	1,489	0	322	52	1,489 <sup>2</sup>
Emergency arrest warrants	649	649	0	11	0	649 <sup>4</sup>
MS revocations	667	665	0	0	2	665 <sup>3</sup>
TOTAL MS- RELATED ACTIONS	2,208	2,154	0	322	54	6,676

## PART B:

ACTIONS DURING FISCAL YEAR ENDING AUGUST 31, 1982,  
ON MANDATORY SUPERVISION RECOMMENDATIONS  
SUBMITTED TO THE GOVERNOR PRIOR TO THIS FISCAL YEAR

Description	Number Recom- mended	Approved by Governor	Refused by Governor	With- drawn by Board	Number Cases in Process	Number Actions Effectuated
Pre-revocation warrants	30	30	0	0	0	30 <sup>2</sup>
Revocations	3	3	0	0	0	3 <sup>3</sup>
TOTAL MS- RELATED ACTIONS	33	33	0	0	0	33

Footnotes to Table 16A and B:

<sup>1</sup>Number of inmates released to mandatory supervision.

<sup>2</sup>Number of pre-revocation warrants issued.

<sup>3</sup>Number of mandatory supervision cases revoked.

<sup>4</sup>Emergency arrest warrants are non-additive; they are included in the pre-revocation warrant count.

TABLE 17

## EXECUTIVE CLEMENCY-RELATED ACTIVITY

ACTIONS ON EXECUTIVE CLEMENCY RECOMMENDATIONS SUBMITTED TO  
GOVERNOR DURING THE FISCAL YEAR ENDING AUGUST 31, 1982

Description	Number Consid- ered	Number Recom- mended	Approved by Governor	Refused by Governor	With- drawn by Board	Number Cases in Process	Number Actions Effectuated
Commutation of Death Sentences	14	14	13	0	0	1	13
Commutation of other Sentences	7	7	4	3	0	0	4
Emergency Reprieves	8	8	7	0	0	1	7
Full pardons and/or restoration of civil rights	2,300	171	143	22	1	5	143
TOTAL CLEMENCY- RELATED ACTIONS	2,329	200	167	25	1	7	167

TABLE 18

NUMBER OF RELEASEES UNDER JURISDICTION OF THE BOARD  
AT END OF FISCAL YEAR

Texas parolees reporting to parole officers in Texas.....	12,945
Texas MS releasees reporting to parole officers in Texas.....	5,004
Texas parolees out-of-state.....	1,195
Texas MS releasees out-of-state.....	223
Texas parolees released to detainees <sup>1</sup> .....	1,486
Texas MS releasees released to detainees <sup>1</sup> .....	214
Texas parolees in an annual report status.....	2,665
Texas MS releasees in an annual report status.....	6
Texas parolees released from reporting.....	259
Texas MS releasees released from reporting.....	0
Texas parolees released to special caseload.....	9
Texas MS releasees released to special caseload.....	1
Texas parolees in an absconder status.....	1,707
Texas MS releasees in an absconder status.....	560
TOTAL NUMBER UNDER JURISDICTION.....	26,274

<sup>1</sup>Includes conditional pardons to USIS.

TABLE 19

NUMBER OF RELEASEES UNDER JURISDICTION OF THE BOARD  
AS OF AUGUST 31 FOR A FIVE-YEAR PERIOD

Classification	FY 78	FY 79	FY 80	FY 81	FY 82
Parolees <sup>1</sup> .....	12,538	15,487	15,133	17,816	20,266
MS releasees.....	7	704	2,102	3,848	6,008
TOTALS.....	12,545	16,191	17,235	21,664	26,274

<sup>1</sup>Includes conditional pardons to USIS.

TABLE 20

NUMBER OF RELEASEES UNDER ACTIVE SUPERVISION  
OF TEXAS PAROLE OFFICERS AT END OF FISCAL YEAR

Texas parolees in Texas.....	12,945
Texas MS releasees in Texas.....	5,004
Other state parolees in Texas.....	1,635
TOTAL NUMBER UNDER SUPERVISION.....	19,584

TABLE 21

NUMBER OF RELEASEES UNDER ACTIVE SUPERVISION OF  
TEXAS PAROLE OFFICERS AS OF AUGUST 31  
FOR A FIVE-YEAR PERIOD

Classification	FY 78	FY 79	FY 80	FY 81	FY 82
Parolees.....	9,293	11,731	10,145	12,318	14,580
MS releasees.....	7	653	1,788	3,148	5,004
TOTALS.....	9,300	12,384	11,933	15,466	19,584

TABLE 22

INTERSTATE COMPACT CASE STATUS AT  
END OF FISCAL YEAR

Classification	Parole/MS	Probation	Total
Texas cases in other states	1,398	5,945	7,343
Other state cases in Texas	1,635	3,927	5,562
TOTAL	3,033	9,872	12,905



TABLE 23

INTERSTATE COMPACT CASES STATUS AS OF  
AUGUST 31 OVER A FIVE-YEAR PERIOD

Classification	FY 78		FY 79		FY 80		FY 81		FY 82	
	MS/ Parole	Proba- tion	MS/ Parole	Proba- tion	MS/ Parole	Proba- tion	MS/ Parole	Proba- tion	MS/ Parole	Proba- tion
Texas cases										
in other states	918	3,308	1,117	3,841	1,168	4,476	1,279	5,360	1,398	5,945
Other state										
cases in Texas	997	2,426	1,042	2,246	1,187	2,558	1,389	3,002	1,635	3,927
Annual totals	1,915	5,734	2,159	6,087	2,355	7,034	2,668	8,362	3,033	9,872
ANNUAL										
GRAND TOTALS	7,649		8,246		9,389		11,030		12,905	

TABLE 24

BREAKDOWN OF TDC RELEASES  
OVER A FIVE-YEAR PERIOD

Fiscal Year	Total	Discharged	Paroled	Released To Mandatory Supervision
1978	8,605 (100 %)	3,647 (42 %)	4,948 (58 %)	10 (0 %)
1979	11,528 (100 %)	3,039 (26 %)	7,750 <sup>1</sup> (67 %)	739 (7 %)
1980	9,592 (100 %)	2,430 (25 %)	5,022 <sup>1</sup> (53 %)	2,140 (22 %)
1981	12,757 (100 %)	1,927 (15 %)	7,503 <sup>1</sup> (59 %)	3,327 (26 %)
1982	13,592 (100 %)	1,554 (11 %)	7,516 <sup>1 2</sup> (55 %)	4,522 <sup>3</sup> (34 %)

<sup>1</sup>Includes reinstatements

<sup>2</sup>Includes 11 work furlough releasees

<sup>3</sup>Includes 1,514 early mandatory supervision releasees

TABLE 25

PREVIOUS CRIMINAL RECORD OF 7,516 INMATES  
RELEASED TO PAROLE DURING THE FISCAL YEAR ENDING  
AUGUST 31, 1982,  
CLASSIFIED ACCORDING TO ETHNIC GROUP

Previous Criminal Record	Ethnic Group			Total
	White	Black	Hispanic	
Prisons:				
1 Prison	436	473	162	1,071
2 Prisons	146	161	60	367
3 Prisons	37	24	19	80
4 Prisons	23	24	3	50
5 Prisons	7	8	3	18
6 Prisons	6	3	2	11
7 Prisons	1	0	0	1
8 Prisons	2	0	0	2
Reformatories:				
1 Reformatory	226	167	85	478
2 Reformatories	35	32	23	90
3 Reformatories	9	9	9	27
4 Reformatories	4	3	0	7
5 Reformatories	0	1	0	1
10 Reformatories	1	0	0	1
Prisons and Reformatories:				
1 prison and 1 reformatory	75	65	36	176
1 prison and 2 reformatories	27	19	16	62
1 prison and 3 reformatories	10	7	4	21
1 prison and 4 reformatories	0	1	0	1
1 prison and 5 reformatories	0	1	0	1
2 prisons and 1 reformatory	28	25	19	72
2 prisons and 2 reformatories	9	10	5	24
2 prisons and 3 reformatories	1	6	2	9
2 prisons and 4 reformatories	1	0	1	2
3 prisons and 1 reformatory	6	9	6	21
3 prisons and 2 reformatories	4	7	6	17
3 prisons and 3 reformatories	0	0	2	2
3 prisons and 4 reformatories	1	1	0	2
3 prisons and 5 reformatories	1	0	0	1
4 prisons and 1 reformatory	7	1	2	10
4 prisons and 2 reformatories	2	4	0	6
4 prisons and 3 reformatories	2	1	2	5
4 prisons and 4 reformatories	0	1	0	1
5 prisons and 1 reformatory	5	2	0	7
5 prisons and 2 reformatories	1	0	1	2
5 prisons and 3 reformatories	0	1	1	2
6 prisons and 1 reformatory	0	1	0	1
6 prisons and 2 reformatories	2	1	0	3
7 prisons and 1 reformatory	0	1	0	1

(Table 25 continued)

Previous Criminal Record	Ethnic Group			Total
	White	Black	Hispanic	
Total inmates released with previous convictions	1,115	1,069	469	2,653
Total inmates released with no previous convictions	2,190	1,887	786	4,863
<b>TOTAL INMATES RELEASED</b>	<b>3,305</b>	<b>2,956</b>	<b>1,255</b>	<b>7,516<sup>1</sup></b>

<sup>1</sup>Includes 11 conditional work furlough parolees.

**TABLE 26**  
**PREVIOUS CRIMINAL RECORD OF 4,522 INMATES**  
**RELEASED ON MANDATORY SUPERVISION DURING THE FISCAL YEAR ENDING**  
**AUGUST 31, 1982**

Previous Criminal Record	Ethnic Group			Total
	White	Black	Hispanic	
<b>Prisons:</b>				
1 Prison	413	486	209	1,108
2 Prisons	138	170	52	360
3 Prisons	68	55	22	145
4 Prisons	25	23	10	58
5 Prisons	15	10	3	28
6 Prisons	9	4	1	14
7 Prisons	5	1	0	6
8 Prisons	3	0	0	3
9 Prisons	1	0	0	1
10 Prisons	1	0	0	1
11 Prisons				
<b>Reformatories:</b>				
1 Reformatory	89	101	46	236
2 Reformatories	22	25	10	57
3 Reformatories	3	6	7	16
4 Reformatories	0	2	3	5
5 Reformatories	2	1	0	3
<b>Prisons and Reformatories:</b>				
1 prison and 1 reformatory	61	93	34	188
1 prison and 2 reformatories	34	27	12	73
1 prison and 3 reformatories	7	7	6	20
1 prison and 4 reformatories	1	4	4	9
1 prison and 5 reformatories	1	5	0	6
2 prisons and 1 reformatory	27	28	10	65
2 prisons and 2 reformatories	15	20	8	43
2 prisons and 3 reformatories	4	2	3	9
2 prisons and 4 reformatories	1	3	1	5
2 prisons and 6 reformatories	1	0	0	1
3 prisons and 1 reformatory	4	18	3	25
3 prisons and 2 reformatories	4	9	3	16
3 prisons and 3 reformatories	1	2	2	5
3 prisons and 4 reformatories	1	1	0	2
3 prisons and 5 reformatories	0	1	0	1
4 prisons and 1 reformatory	14	4	1	19
4 prisons and 2 reformatories	1	5	1	7
5 prisons and 1 reformatory	9	2	0	11
5 prisons and 2 reformatories	1	0	0	1
5 prisons and 3 reformatories	1	0	0	1
6 prisons and 1 reformatory	3	1	0	4
7 prisons and 1 reformatory	1	3	0	4
7 prisons and 2 reformatories	0	1	0	1
8 prisons and 1 reformatory	0	1	0	1

(Table 26 continued)

Previous Criminal Record	Ethnic Group			Total
	White	Black	Hispanic	
Total Inmates released with previous convictions	986	1,121	451	2,558
Total inmates released with no previous convictions	775	809	380	1,964
<b>TOTAL INMATES RELEASED</b>	<b>1,761</b>	<b>1,930</b>	<b>831</b>	<b>4,522</b>

TABLE 27

AGE OF 7,516 INMATES RELEASED TO PAROLE DURING THE FISCAL YEAR ENDING AUGUST 31, 1982, CLASSIFIED ACCORDING TO ETHNIC GROUP

Age Group	White	Black	Hispanic	Total
17 to 20 inclusive	567	343	172	1,082
21 to 25 inclusive	1,135	995	440	2,570
26 to 30 inclusive	663	742	242	1,647
31 to 40 inclusive	588	628	272	1,488
41 to 50 inclusive	220	161	96	477
51 to 60 inclusive	106	71	26	203
61 to 70 inclusive	21	14	7	42
71 to 80 inclusive	5	2	0	7
81 to 90 inclusive	0	0	0	0
<b>TOTAL INMATES RELEASED</b>	<b>3,305</b>	<b>2,956</b>	<b>1,255</b>	<b>7,516<sup>1</sup></b>

<sup>1</sup>Includes 11 conditional work furlough parolees.

TABLE 28

AGE OF 4,522 INMATES RELEASED TO MANDATORY SUPERVISION DURING THE FISCAL YEAR ENDING AUGUST 31, 1982, CLASSIFIED ACCORDING TO ETHNIC GROUP

Age Group	Ethnic Group			Total
	White	Black	Hispanic	
17 to 20 inclusive	155	193	97	445
21 to 25 inclusive	566	582	280	1,428
26 to 30 inclusive	384	539	202	1,125
31 to 40 inclusive	388	465	185	1,038
41 to 50 inclusive	170	103	50	323
51 to 60 inclusive	80	42	15	137
61 to 70 inclusive	18	6	2	26
71 to 80 inclusive	0	0	0	0
81 to 90 inclusive	0	0	0	0
<b>TOTAL INMATES RELEASED</b>	<b>1,761</b>	<b>1,930</b>	<b>831</b>	<b>4,522</b>

TABLE 29

SEX OF 7,516 INMATES RELEASED TO PAROLE DURING THE FISCAL YEAR ENDING AUGUST 31, 1982, CLASSIFIED ACCORDING TO ETHNIC GROUP

Sex	Ethnic Group			Total
	Black	White	Hispanic	
Male	1,101	2,723	1,218	7,042
Female	204	233	37	474
<b>TOTAL INMATES RELEASED</b>	<b>3,305</b>	<b>2,956</b>	<b>1,255</b>	<b>7,516<sup>1</sup></b>

<sup>1</sup>Includes 11 conditional work furlough parolees.

TABLE 30

SEX OF 4,522 INMATES RELEASED ON MANDATORY SUPERVISION DURING THE FISCAL YEAR ENDING AUGUST 31, 1982, CLASSIFIED ACCORDING TO ETHNIC GROUP

Sex	Ethnic Group			Total
	White	Black	Hispanic	
Male	1,652	1,718	809	4,179
Female	109	212	22	343
<b>TOTAL INMATES RELEASED</b>	<b>1,761</b>	<b>1,930</b>	<b>831</b>	<b>4,522</b>

TABLE 31

EDUCATION OF 7,516 INMATES RELEASED TO PAROLE DURING  
THE FISCAL YEAR ENDING AUGUST 31, 1982,  
CLASSIFIED ACCORDING TO ETHNIC GROUP

Grade Completed*	Ethnic Group			Total
	White	Black	Hispanic	
First	4	5	6	15
Second	1	8	16	25
Third	6	18	32	56
Fourth	21	14	39	74
Fifth	33	33	44	110
Sixth	108	68	116	292
Seventh	192	122	142	456
Eighth	426	287	202	915
Ninth	476	432	191	1,099
Tenth	410	513	122	1,045
Eleventh	300	505	91	896
Twelfth	931	636	138	1,705
First year of college	141	107	18	266
Second year of college	47	35	5	87
Third year of college	10	9	7	26
Fourth year of college	23	10	3	36
Five or more years of college	19	5	0	24
Total whose education is known	3,148	2,807	1,172	7,127
No education reported	157	149	83	389
<b>TOTAL INMATES RELEASED</b>	<b>3,305</b>	<b>2,956</b>	<b>1,255</b>	<b>7,516<sup>1</sup></b>

\*Not verified: Information obtained from inmates' statements.  
<sup>1</sup>Includes 11 conditional work furlough parolees.

TABLE 32

EDUCATION OF 4,522 INMATES RELEASED ON MANDATORY SUPERVISION  
DURING THE FISCAL YEAR ENDING AUGUST 31, 1982,  
CLASSIFIED ACCORDING TO ETHNIC GROUP

Grade Completed*	Ethnic Group			Total
	White	Black	Hispanic	
First	0	2	5	7
Second	7	10	8	25
Third	11	9	23	43
Fourth	19	13	28	60
Fifth	28	15	37	80
Sixth	55	78	85	218
Seventh	115	91	102	308
Eighth	174	204	139	517
Ninth	256	281	123	660
Tenth	180	319	64	563
Eleventh	110	280	25	415
Twelfth	455	336	68	859
First year of college	69	61	9	139
Second year of college	18	21	2	41
Third year of college	7	12	1	20
Fourth year of college	15	5	3	23
Five or more years of college	3	2	1	6
Total whose education is known	1,522	1,739	723	3,984
No education reported	239	191	108	538
<b>TOTAL INMATES RELEASED</b>	<b>1,761</b>	<b>1,930</b>	<b>831</b>	<b>4,522</b>

\*Not verified: Information obtained from inmates' statements.



TABLE 33

7,516 INMATES RELEASED TO PAROLE DURING THE FISCAL YEAR  
ENDING AUGUST 31, 1982, CLASSIFIED ACCORDING TO  
TYPE OF CRIME COMMITTED AND LENGTH OF SENTENCE RECEIVED

Crime	Length of Sentence in Years																	Total
	1 to 2	2 to 3	3 to 4	4 to 5	5 to 6	6 to 7	7 to 8	8 to 9	9 to 10	10 to 15	15 to 20	20 to 30	30 to 40	40 to 50	50 to 60	60 & up	Life	
Arson	0	1	2	3	3	1	1	1	3	1	1	0	0	0	0	0	0	17
Assault	0	13	14	12	22	3	7	5	2	15	3	6	0	0	1	1	1	105
Burglary	0	401	375	278	807	163	155	133	20	275	145	87	6	5	1	1	32	2,884
Carrying firearms	0	12	14	9	8	2	5	3	0	9	3	5	2	0	0	0	2	74
Driving w/o owner's consent	0	93	77	44	83	14	7	11	0	23	2	5	0	0	0	0	0	359
DWI	0	59	34	6	17	0	0	2	0	0	0	1	0	0	0	0	0	119
Escape	0	8	3	2	8	2	2	1	0	7	4	3	1	0	1	0	0	42
Failure to stop and render aid	0	2	3	4	4	0	0	0	0	0	0	0	0	0	0	0	0	13
Forgery	0	107	127	77	93	33	13	16	1	35	11	3	2	0	0	0	5	523
Injuring property	0	16	12	7	5	1	1	1	0	2	0	1	0	0	0	0	0	46
Kidnapping	0	0	0	1	0	0	0	0	0	1	0	2	0	0	0	0	0	4
Murder	0	2	1	4	20	3	6	11	1	32	15	25	11	3	2	5	17	158
Narcotics	0	144	134	49	148	35	44	35	5	96	68	41	8	8	5	7	27	854
Perjury	0	1	1	0	0	1	0	0	0	0	0	0	0	0	0	0	0	3
Rape	0	1	0	1	5	0	2	1	0	5	1	3	1	0	1	1	0	22
Robbery	0	17	34	32	182	39	60	57	11	166	107	111	27	8	17	18	27	913
Sex offenses (excluding rape)	0	1	2	1	1	1	0	1	0	7	0	0	0	0	0	0	0	14
Swindling	0	33	42	21	20	7	4	4	1	7	2	0	1	0	0	0	2	144
Theft		269	305	148	229	62	29	27	9	78	20	12	1	1	0	2	7	1,199
Miscellaneous	0	2	4	2	6	2	1	1	0	3	0	2	0	0	0	0	0	23
TOTAL	0	1,182	1,184	701	1,661	369	337	310	53	762	382	307	60	25	28	35	120	7,516 <sup>1</sup>

<sup>1</sup>Includes 11 conditional work furlough parolees.

TABLE 34

4,522 INMATES RELEASED ON MANDATORY SUPERVISION DURING FISCAL  
YEAR ENDING AUGUST 31, 1982, CLASSIFIED ACCORDING TO TYPE OF  
CRIME COMMITTED AND LENGTH OF SENTENCE RECEIVED

Crime	Length of Sentence in Years																	Total
	1 to 2	2 to 3	3 to 4	4 to 5	5 to 6	6 to 7	7 to 8	8 to 9	9 to 10	10 to 15	15 to 20	20 to 30	30 to 40	40 to 50	50 to 60	60 & up	Life	
Arson	0	18	15	1	6	1	0	0	0	0	0	0	0	0	0	0	0	41
Assault	0	116	63	26	42	9	4	4	1	0	0	0	0	0	0	0	0	265
Burglary	0	407	227	141	260	40	23	33	3	8	0	0	0	0	0	0	0	1,142
Carrying firearms	0	47	31	5	8	5	2	0	1	1	0	0	0	0	0	0	0	100
Driving w/o owner's consent	0	99	49	29	30	9	4	4	0	0	0	0	0	0	0	0	0	224
DWI	36	67	34	9	4	0	0	0	0	0	0	0	0	0	0	0	0	150
Escape	0	19	13	4	5	2	0	3	0	0	0	0	0	0	0	0	0	46
Failure to stop and render aid	2	3	3	0	1	0	0	0	0	0	0	0	0	0	0	0	0	9
Forgery	0	112	81	44	42	16	4	5	1	0	0	0	0	0	0	0	0	305
Injuring property	0	18	3	5	2	1	0	0	0	0	0	0	0	0	0	0	0	29
Kidnapping	0	5	4	1	9	2	0	0	0	0	0	0	0	0	0	0	0	21
Murder	0	42	28	16	48	13	8	5	0	0	0	0	0	0	0	0	0	160
Narcotics	0	175	88	34	37	10	14	8	0	1	0	0	0	0	0	0	0	367
Perjury	0	7	4	0	4	1	0	1	0	0	0	0	0	0	0	0	0	17
Rape	0	34	33	20	40	5	5	5	0	0	0	0	0	0	0	0	0	142
Robbery	0	108	88	49	124	34	22	9	2	0	0	0	0	0	0	0	0	436
Sex offenses (excluding rape)	0	52	29	14	25	4	7	5	0	0	0	0	0	0	0	0	0	136
Swindling	0	44	11	9	9	2	1	0	0	0	0	0	0	0	0	0	0	76
Theft	0	387	208	83	90	31	14	15	3	7	0	0	0	0	0	0	0	838
Miscellaneous	0	9	5	1	1	2	0	0	0	0	0	0	0	0	0	0	0	18
TOTAL	38	1,769	1,017	491	787	187	108	97	11	17	0	0	0	0	0	0	0	4,522

TABLE 35

1,860 INMATES WHOSE PAROLES OR CONDITIONAL PARDONS WERE  
REVOKED DURING THE FISCAL YEAR ENDING AUGUST 31, 1982,  
CLASSIFIED ACCORDING TO CRIME COMMITTED AND  
LENGTH OF SENTENCE RECEIVED

Crime	Length of Sentence in Years																	Total
	1 to 2	2 to 3	3 to 4	4 to 5	5 to 6	6 to 7	7 to 8	8 to 9	9 to 10	10 to 15	15 to 20	20 to 30	30 to 40	40 to 50	50 to 60	60 & up	Life	
Arson	0	3	0	1	2	0	0	0	0	0	0	0	0	0	0	0	0	6
Assault	0	0	0	1	6	2	1	1	0	1	2	1	1	0	0	0	1	21
Burglary	0	54	120	70	246	45	58	45	6	95	27	12	1	0	0	0	9	788
Carrying firearms	0	1	2	0	5	1	0	0	1	1	3	0	0	0	0	0	1	15
Driving w/o owner's consent	0	13	27	16	19	4	6	4	0	7	1	0	0	0	0	0	0	98
DWI	0	8	4	1	6	0	0	1	0	1	0	0	0	0	0	0	0	21
Escape	0	0	2	1	1	0	1	0	2	0	0	0	0	0	0	0	0	7
Failure to stop & render aid	0	0	1	0	0	0	0	0	0	1	0	0	0	0	0	0	0	2
Forgery	0	15	37	20	25	13	5	4	0	12	6	1	1	0	0	0	1	140
Injuring property	0	2	2	4	1	0	0	0	0	0	1	0	0	1	0	0	0	11
Murder	0	0	1	0	1	0	1	1	0	2	3	7	1	1	1	3	5	27
Narcotics	0	16	12	8	27	13	12	10	2	28	13	9	2	0	0	0	1	153
Rape	0	0	0	0	2	0	2	0	0	5	1	1	1	0	0	3	2	17
Robbery	0	0	9	4	38	6	12	12	7	60	36	31	7	0	1	2	6	231
Sex offenses (excluding rape)	0	0	0	0	1	0	0	0	0	2	2	3	0	0	0	0	0	8
Swindling	0	3	8	5	7	0	0	1	0	3	0	0	0	0	0	0	0	27
Theft	0	44	61	38	56	14	16	12	1	26	9	4	1	1	0	0	4	287
Miscellaneous	0	0	1	0	0	0	0	0	0	0	0	0	0	0	0	0	0	1
TOTAL	0	159	287	169	443	98	114	91	19	245	103	69	16	2	2	8	30	1,860

TABLE 36

668 INMATES WHOSE MANDATORY SUPERVISIONS WERE  
REVOKED DURING THE FISCAL YEAR ENDING AUGUST 31, 1982,  
CLASSIFIED ACCORDING TO CRIME COMMITTED AND  
LENGTH OF SENTENCE RECEIVED

Crime	Length of Sentence in Years																	Total
	1 to 2	2 to 3	3 to 4	4 to 5	5 to 6	6 to 7	7 to 8	8 to 9	9 to 10	10 to 15	15 to 20	20 to 30	30 to 40	40 to 50	50 to 60	60 & up	Life	
Arson	0	2	3	1	3	0	0	0	0	0	0	0	0	0	0	0	0	9
Assault	0	13	5	1	10	1	1	0	0	0	0	0	0	0	0	0	0	31
Burglary	0	56	43	41	41	6	2	1	0	0	0	0	0	0	0	0	0	190
Carrying firearms	0	5	4	0	2	0	0	0	0	0	0	0	0	0	0	0	0	11
Driving w/o owner's consent	0	16	18	5	4	1	1	0	0	0	0	0	0	0	0	0	0	45
DWI	3	10	6	1	2	0	0	0	0	0	0	0	0	0	0	0	0	22
Escape	0	1	0	2	1	1	0	0	0	0	0	0	0	0	0	0	0	5
Forgery	0	12	16	13	5	0	1	0	0	0	0	0	0	0	0	0	0	47
Kidnapping	0	0	2	0	1	0	0	0	0	0	0	0	0	0	0	0	0	3
Murder	0	3	9	2	2	0	0	0	0	0	0	0	0	0	0	0	0	16
Narcotics	0	9	10	3	4	2	0	0	0	0	0	0	0	0	0	0	0	28
Rape	0	3	5	1	3	0	0	2	0	0	0	0	0	0	0	0	0	14
Robbery	0	18	17	8	24	2	0	0	0	0	0	0	0	0	0	0	0	69
Sex offenses (excluding rape)	0	6	1	2	4	2	0	0	0	0	0	0	0	0	0	0	0	15
Swindling	0	7	6	2	1	1	0	0	0	0	0	0	0	0	0	0	0	17
Theft	0	44	49	32	12	2	1	0	0	0	0	0	0	0	0	0	0	140
Miscellaneous	0	4	0	1	1	0	0	0	0	0	0	0	0	0	0	0	0	6
TOTALS	3	209	194	115	120	18	6	3	0	0	0	0	0	0	0	0	0	668

TABLE 37

7,516 INMATES RELEASED TO PAROLE DURING THE FISCAL YEAR  
ENDING AUGUST 31, 1982, CLASSIFIED ACCORDING TO  
LENGTH OF SENTENCE RECEIVED AND PERCENTAGE OF TIME  
ACCREDITED TO SENTENCE AT TIME OF RELEASE

Length of Sentence in Years	Percentage of Time Served								15 Years Time Credit or More	20 Years Times Credit or More	Total
	30 % - 40 %	41 % - 50 %	51 % - 60 %	61 % - 70 %	71 % - 80 %	81 % - 90 %	91 % - 100 %				
1 to 2											
2 to 3	31	150	212	434	182	94	79	0	0	1,182	
3 to 4	203	430	216	161	104	42	28	0	0	1,184	
4 to 5	215	183	80	66	69	69	19	0	0	701	
5 to 6	571	270	116	221	300	156	27	0	0	1,661	
6 to 7	113	52	42	87	52	20	3	0	0	369	
7 to 8	82	33	49	74	36	47	16	0	0	337	
8 to 9	78	21	57	59	25	59	11	0	0	310	
9 to 10	14	3	9	4	9	11	3	0	0	53	
10 to 15	103	55	143	114	168	134	45	0	0	762	
15 to 20	28	36	75	90	77	54	22	0	0	382	
20 to 30	28	77	80	50	56	9	7	0	0	307	
30 to 40	16	25	11	8	0	0	0	0	0	60	
40 to 50	18	7	0	0	0	0	0	0	0	25	
50 to 60	28	0	0	0	0	0	0	0	0	28	
60 & Up	0	0	0	0	0	0	0	5	30	35	
Life	0	0	0	0	0	0	0	33	87	120	
TOTAL	1,528	1,342	1,090	1,368	1,078	695	260	38	117	7,516	

'Includes 11 conditional work furlough parolees.

TABLE 38

DISPOSITION OF OUT-OF-STATE APPLICATION FOR ACCEPTANCE  
OF PAROLE SUPERVISION IN TEXAS CLASSIFIED  
ACCORDING TO REQUESTING STATE

	Applications Made	Applications Accepted	Applications Refused	Applications Withdrawn	Applications Pending	Special Investigations
Alabama	19	12	3	2	2	5
Alaska	1	1				0
Arizona	37	25	0	0	0	0
Arkansas	99	60	3	2	7	2
California	140	87	28	4	7	2
Colorado	53	36	9	7	22	0
Connecticut	3	3	0	0	8	0
Delaware	1	0	0	0	0	0
Dist. of Columbia	0	0	0	0	1	0
Florida	55	38	8	0	0	0
Georgia	25	20	1	0	9	10
Hawaii	0	0	0	0	4	6
Idaho	3	1	0	0	0	0
Illinois	132	84	1	1	0	1
Indiana	74	53	20	10	18	1
Iowa	15	11	14	5	2	1
Kansas	51	35	1	0	3	0
Kentucky	53	26	11	0	5	2
Louisiana	107	63	15	2	10	2
Maine	0	0	15	18	11	22
Maryland	3	2	0	0	0	0
Massachusetts	4	4	0	0	1	0
Michigan	89	60	0	0	0	0
Minnesota	11	6	16	4	9	2
Mississippi	46	28	0	2	3	0
Missouri	85	52	10	1	7	0
Montana	7	5	15	10	8	3
Nebraska	8	6	2	0	0	0
Nevada	18	11	1	0	1	0
New Hampshire	0	0	1	2	4	0
New Jersey	14	0	0	0	0	0
New Mexico	69	46	2	0	2	6
New York	54	41	11	3	9	8
North Carolina	23	15	3	1	1	1
North Dakota	0	0	0	0	5	0
Ohio	94	63	23	0	8	0
Oklahoma	53	39	7	2	5	13
Oregon	18	10	3	2	3	3
Pennsylvania	44	33	6	2	3	0
Puerto Rico	1	0	1	0	0	4
Rhode Island	1	1	0	0	0	0
South Carolina	13	8	2	1	2	0
South Dakota	4	1	1	1	1	1
Tennessee	33	19	7	4	3	0
Utah	7	3	3	0	1	1
Vermont	2	1	0	0	1	0
Virginia	30	27	2	1	0	1
Washington	30	20	6	1	3	2
West Virginia	8	5	1	2	0	3
Wisconsin	39	27	7	0	5	1
Wyoming	4	4	0	0	0	0
TOTAL	1,680	1,102	294	90	194	103

**TABLE 39**  
**PRESENT STATUS OF 100,572 INMATES PAROLED FROM**  
**THE TEXAS DEPARTMENT OF CORRECTIONS**  
**DURING 35-YEAR PERIOD**  
**ENDING AUGUST 31, 1982**

Years	COLUMN I Released	COLUMN II Active	COLUMN III Terminated	COLUMN IV Revoked
1948	747	6	645	96
1949	761	7	629	125
1950	913	23	726	164
1951	1,125	8	862	255
1952	913	18	661	234
1953	759	34	532	193
1954	837	87	542	208
1955	1,247	105	809	333
1956	1,191	61	777	353
1957	894	38	548	308
1958	1,186	49	734	403
1959	1,759	39	1,153	567
1960	2,336	64	1,454	818
1961	2,552	54	1,612	886
1962	2,548	48	1,660	840
1963	2,787	75	1,749	963
1964	3,166	73	1,929	1,164
1965	2,407	49	1,470	888
1966	2,200	49	1,452	699
1967	1,737	63	1,182	492
1968	1,921	55	1,227	639
1969	1,943	69	1,172	702
1970	2,058	80	1,312	666
1971	2,278	110	1,570	598
1972	3,375	221	2,428	726
1973	3,770	272	2,685	813
1974	4,237	297	3,213	727
1975	4,788	423	3,385	980
1976	4,248	423	2,960	865
1977	7,150	745	4,676	1,729
1978	4,948	720	2,982	1,246
1979	7,750	1,890	3,843	2,017
1980	5,022	2,162	1,696	1,164
1981	7,503	5,223	1,272	1,008
1982	7,516	7,242	170	104
<b>TOTAL</b>	<b>100,572</b>	<b>20,882</b>	<b>55,717</b>	<b>23,973<sup>1</sup></b>

<sup>1</sup>Revocation after reinstatement of parole is not shown in Column IV for parolees reinstated prior to Fiscal Year 1979.

#### EXPLANATION OF TABLE 39

Table 39 shows the present status of inmates released from the Texas Department of Corrections on paroles or conditional pardons during the 35-year period beginning September 1, 1947, and ending August 31, 1982.

A total of Column I (which gives the total number released each year) shows that 100,572 inmates were released during the entire 35-year period. A total of Column II (which gives the number still on active parole out of the total released each year) shows that 20,882 inmates released over the 35-year period are still serving satisfactorily on paroles or conditional pardons. Many inmates have already completed their paroles or conditional pardons and have been discharged from their sentences. A total of Column III (which gives those terminated satisfactorily out of the total released each year) shows that 55,717 released during the 35-year period have already satisfactorily terminated their paroles or conditional pardons. Some parolees have violated their paroles or conditional pardons, and clemency or parole has been revoked. A total of Column IV (which gives those revoked out of the total released each year) shows that 23,973 over the 35-year period have been revoked. These were revoked because of new felony convictions or for technical violations of parole.

As can be seen, Columns II, III and IV are constantly changing from year to year as parolees discharge their sentences or are revoked. For instance, there are at present only 221 parolees out of the 3,375 released in 1972 who are still on active parole. The others have discharged their sentences or have been revoked. On the other hand, there are 7,242 out of the 7,516 released in 1982. This is because those released in 1972 have had 10 years to discharge their sentences while on parole or conditional pardon, while those released in 1982 have had only one year towards discharging their sentences.



TABLE 40

PRESENT STATUS OF 11,638 INMATES RELEASED FROM THE TEXAS DEPARTMENT OF CORRECTIONS ON MANDATORY SUPERVISION DURING FIVE-YEAR PERIOD ENDING AUGUST 31, 1982

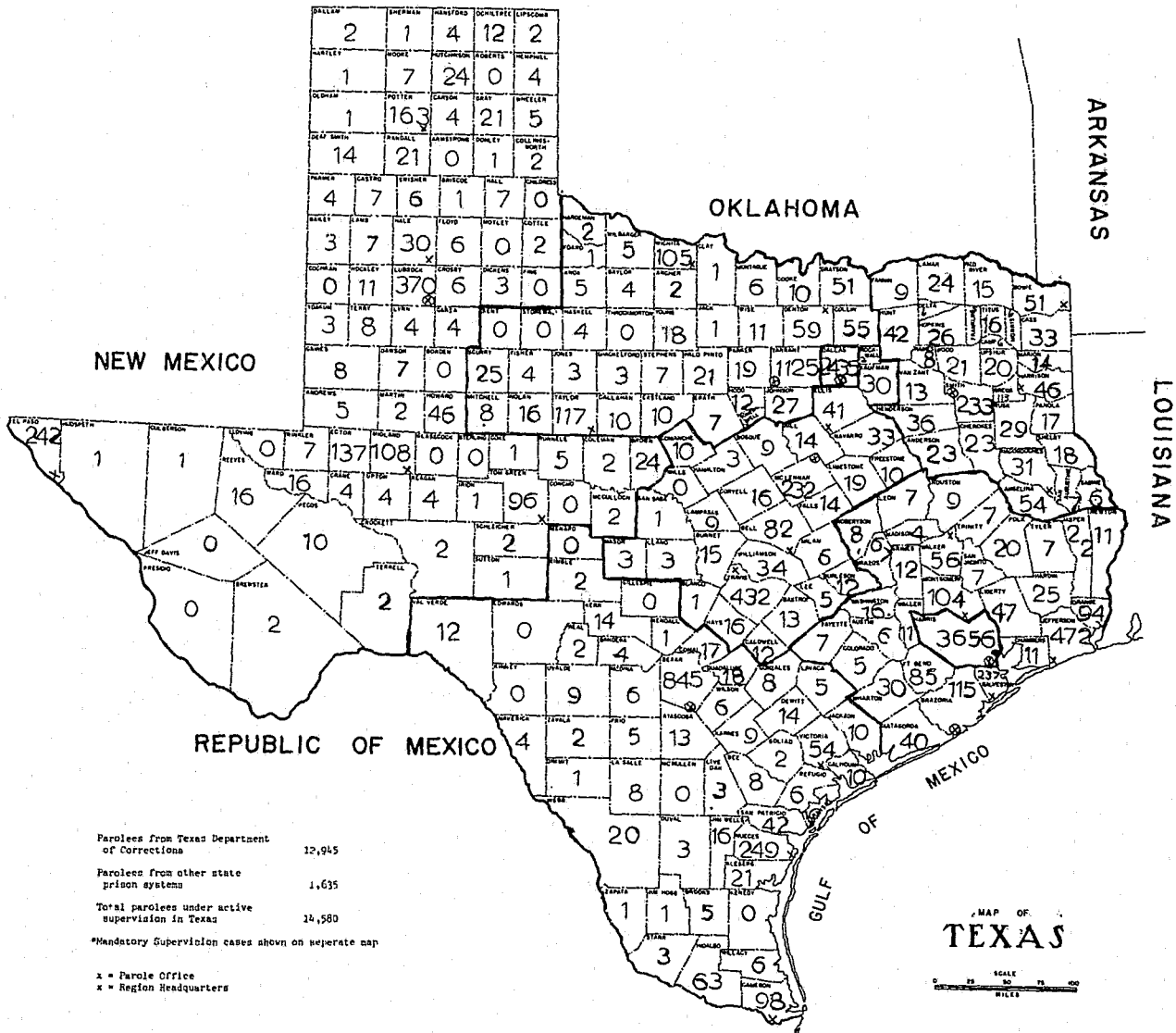
Years	COLUMN I Released	COLUMN II Active	COLUMN III Terminated	COLUMN IV Revoked
1978	10	0	9	1
1979	739	0	594	145
1980	2,140	377	1,241	522
1981	3,327	1,454	1,355	518
1982	5,422	5,150	188	84
TOTAL	11,638	6,981	3,387	1,270

EXPLANATION OF TABLE 40

The chart shows the present status of inmates released from the Texas Department of Corrections on mandatory supervision during the five-year period beginning September 1, 1977, and ending August 31, 1982.

A total of Column I (which gives the total number released each year) shows that 11,638 inmates were released during the entire five-year period. A total of Column II (which gives the number still under mandatory supervision out of the total released each year) shows that 6,981 inmates released over the five-year period are still serving satisfactorily under mandatory supervision. Many inmates have already completed their sentences. A total of Column III (which gives those terminated satisfactorily out of the total released each year) shows that 3,387 released during the five-year period have already satisfactorily terminated their mandatory supervision status. Some releasees have violated their mandatory supervision status and have been revoked. A total of Column IV (which gives those revoked out of the total released each year) shows that 1,270 over the five-year period have had their mandatory supervision status revoked. These figures will constantly change from year to year as releasees terminate their sentences or are revoked.

DISTRIBUTION OF 14,584 PAROLEES ASSIGNED TO TEXAS COUNTIES AS OF AUGUST 31, 1982



ARKANSAS

OKLAHOMA

NEW MEXICO

LOUISIANA

REPUBLIC OF MEXICO

GULF OF MEXICO

MAP OF TEXAS

Scale: 0 25 50 75 100 MILES

Total Mandatory Supervision cases released under active supervision in Texas 5,004

x = Parole Office  
\* = Region Headquarters

**Active supervision:** Status of parolee in which the parolee must report regularly to a field parole officer.

**Conditional pardon:** A form of executive clemency that does not become operative until the grantee has performed some specified act or becomes void after the occurrence of some specified event or remits only a portion of the penalties that are the legal consequences of a crime.

**Detainer warrant:** A legal or quasi-legal hold order under which a warden having a man in custody will not release him when he completes his sentence but will make him available to the officers of another jurisdiction to answer the charges or accusations pending in that jurisdiction.

**Emergency reprieve:** A form of executive clemency whereby an inmate may be released from prison to enter a hospital, attend civil court proceedings, attend a funeral of an immediate family member or visit a critically ill immediate family member.

**Further investigation (FI):** An initial determination by the parole panel favorable to parole of an inmate pending further investigation.

**Initial review:** The first review conducted by the parole Board to determine if an inmate should be paroled at the time in the sentence when the inmate legally reaches the minimum eligibility for parole consideration.

**Inmate:** A person incarcerated in the Texas Department of Corrections, other penal institution or jail and serving a sentence imposed upon conviction of a crime.

**Institutional parole officer:** Parole officer who works within a penal institution to assist inmates and their families in matters concerning parole procedures, parole planning and executive clemency.

**Interstate Probation and Parole Compact:** An agreement between Texas, the other 49 states, the Virgin Islands and Puerto Rico to allow probationers and parolees to complete their terms in a jurisdiction other than the jurisdiction in which the offense was committed.

**Jurisdiction:** All persons over whom the Board of Pardons and Paroles has revocation power and who are subject to the orders of the Board. See Table 18.

**Mandatory supervision:** The release of a prisoner at the expiration of the maximum term less credit for good time earned, but not on parole, for rehabilitation and supervision in the community until the expiration of the calendar sentence.

**Pardon:** A form of executive clemency which absolves an individual from the legal consequences of his crime and conviction.

**Parole:** The conditional release, by administrative act, of a convicted offender from a penal or correctional institution, under the continued custody of the state, to serve the remainder of his sentence in the community under supervision.

**Parolee:** Inmate who is released from incarceration in a parole status.

**Parole certificate:** An order of the Board incorporating a parole agreement which, when fully executed, authorizes the release of an inmate from the Texas Department of Corrections on parole.

**Parole eligible:** An inmate who has met the legal requirements for parole consideration by a parole panel. Prisoners are normally eligible for parole consideration when their calendar time served plus good conduct time equals one-third of the maximum sentence imposed or 20 years, whichever is less. If a prisoner has been convicted of a specified aggravated crime, or used a weapon in the commission of the offense, he is not eligible for parole consideration until his actual calendar time served, without consideration of good conduct time, equals one-third of the maximum sentence or 20 calendar years, whichever is less, but in no event shall he be eligible for parole in less than two calendar years.

**Parole panel:** A three-member panel composed of commissioners and/or parole Board members for purposes of parole selection, parole revocation or mandatory supervision revocation.

**Parole plan:** Proposal for residence and employment or provision for maintenance and care of a parolee.

**Preliminary investigation:** A parole consideration in which it is determined that additional information is necessary before a final disposition can be made.

**Pre-revocation warrant:** Warrant authorizing the arrest by any peace officer of a parolee for alleged violation of conditions of his parole.

**Probation:** Release of a convicted offender by a court under conditions imposed by the court for a specified period during which the imposition of sentence is suspended.

**Probation officer:** Person employed by one or more courts of record having original criminal jurisdiction to supervise defendants placed on probation.

**Reinstatement of parole:** A reinstatement of a revoked parole.

**Releasee:** Inmate released on parole, conditional pardon or mandatory supervision.

**Remission of fine or forfeiture:** A form of executive clemency releasing the grantee from payment of all or a portion of a fine or cancelling a forfeiture of a bond.

**Reprieve:** A form of executive clemency granting the temporary suspension of the execution of a sentence.

**Restoration of rights of citizenship:** A form of executive clemency which restores the right to vote, which in turn restores any other civil rights conditioned upon the right to vote; not a full pardon.

**Revocation:** The cancellation of parole, mandatory supervision status or of a conditional act of executive clemency that subjects the grantee to immediate incarceration to serve the remainder of the sentence or, in the instance of a fine, to immediate payment of the fine.

**Revocation hearing:** A hearing of evidence by a parole officer to determine whether to withdraw a warrant and continue the releasee on parole/mandatory supervision, or to recommend revocation of parole to the governor when a releasee allegedly violates the parole rules or commits a new offense.

**Revoked without prejudice:** Refers to revocations of parole on a new conviction on an offense that was committed prior to or about the same time as the offense for which the inmate is presently paroled.

**Serve-all (SA):** A decision by the parole panel to deny a recommendation for parole, with the further recommendation that the inmate be required to serve the remainder of the sentence in prison.

**Set-off:** Decision by the parole panel in which the offender is not paroled but his/her case is set for review at a later date.

**Special review:** A parole case consideration in which the inmate is eligible for parole upon or shortly after his/her arrival at the Texas Department of Corrections or, in the case of subsequent reviews, a case in which new and pertinent information dictates that it be reconsidered prior to the originally set-off date or prior to the serve-all date.

**Subsequent review:** A review conducted by a parole panel to determine if an inmate should be paroled subsequent to the initial review.

**Technical violation:** Violation, other than a new conviction, of the rules of the Board of Pardons and Paroles.

**Texas Department of Corrections (TDC):** The agency that manages the state's adult institutional correctional system with responsibility for custody of prisoners confined in its facilities.

**Trial reprieve:** A form of executive clemency used in jail cases in which an inmate is released for a specified time but not from the penalty of the sentence, nor does the time away from the jail count as time served on the sentence.

**USIS:** United States Immigration Service.

**END**