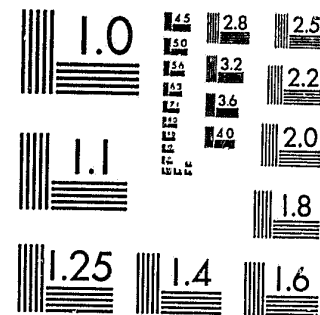


National Criminal Justice Reference Service

**ncjrs**

This microfiche was produced from documents received for inclusion in the NCJRS data base. Since NCJRS cannot exercise control over the physical condition of the documents submitted, the individual frame quality will vary. The resolution chart on this frame may be used to evaluate the document quality.



MICROCOPY RESOLUTION TEST CHART  
NATIONAL BUREAU OF STANDARDS-1963-A

Microfilming procedures used to create this fiche comply with the standards set forth in 41CFR 101-11.504.

Points of view or opinions stated in this document are those of the author(s) and do not represent the official position or policies of the U. S. Department of Justice.

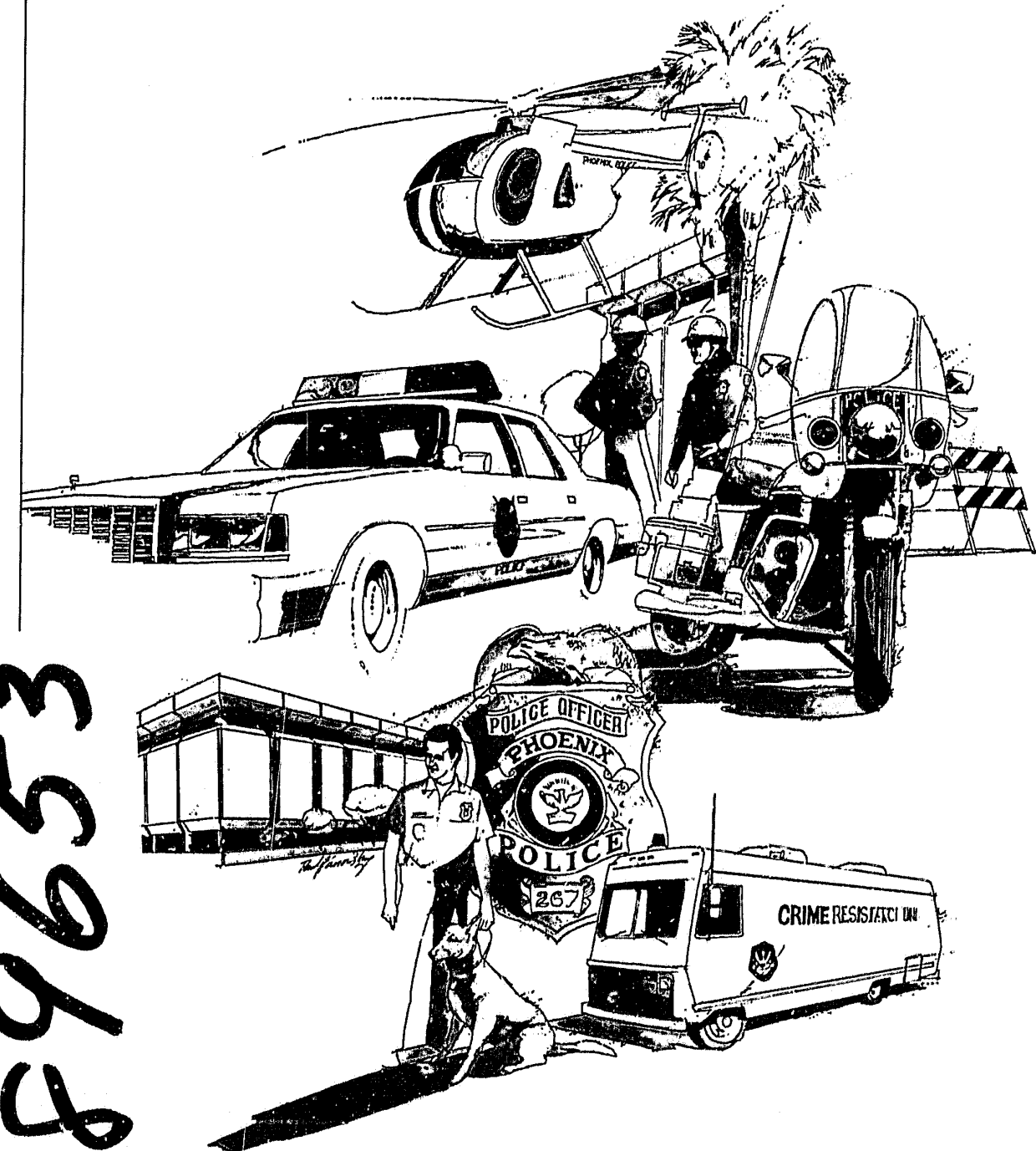
National Institute of Justice  
United States Department of Justice  
Washington, D. C. 20531

10/6/83

CITY OF PHOENIX, ARIZONA 1982 ANNUAL REPORT

CR-5619-183

# POLICE DEPARTMENT



U.S. Department of Justice  
National Institute of Justice

89653

This document has been reproduced exactly as received from the person or organization originating it. Points of view or opinions stated in this document are those of the authors and do not necessarily represent the official position or policies of the National Institute of Justice.

Permission to reproduce this copyrighted material has been granted by

Phoenix Arizona Police  
Department

to the National Criminal Justice Reference Service (NCJRS).

Further reproduction outside of the NCJRS system requires permission of the copyright owner.

NCJRS

MAY

ACQUISITIONS

## TABLE OF CONTENTS

|  |    |
|--|----|
| A Message From The Police Chief .....                            | 2  |
| History .....  | 3  |
| Organizational Chart .....                                       | 4  |
| District Boundaries .....  | 5  |
| Office of Administration .....                                   | 6  |
| Management Services Division .....                               | 7  |
| Technical Services Division .....                                | 10 |
| Field Operations Division .....                                  | 13 |
| Special Operations Division .....                                | 17 |
| Investigations Division .....                                    | 21 |
| In Memoriam .....  | 24 |
| Departmental Statistics .....                                    | 25 |
| Departmental Budget .....  | 26 |
| Classification of Personnel .....                                | 26 |
| Crime Index Trends and Analysis<br>of Crime Index Offenses ..... | 27 |
| Analysis of Property Stolen and<br>Dollar Loss by Offense .....  | 33 |
| Part II Offenses .....   | 37 |
| Adult and Juvenile Arrests .....                                 | 37 |
| Clearances .....   | 38 |
| Traffic Statistics .....   | 38 |
| Dollar Value of Narcotic Seizures .....                          | 39 |
| Analysis of Assaults on Police Officers .....                    | 39 |

The Annual Report is prepared by the Phoenix Police Department's Planning and Research Bureau.

|                               |                           |
|-------------------------------|---------------------------|
| Editor .....                  | Esther Luterman Margolis  |
| Departmental Statistics ..... | Jewell A. Hawthorne       |
| Typing .....                  | Irene R. Rosko            |
| Cover Illustration .....      | Paul Janovsky             |
| Layout/Photography .....      | Public Information Office |

## A MESSAGE FROM THE POLICE CHIEF



I am pleased to present the 1982 Annual Report of the Phoenix Police Department. For the second continuous year, crime has declined in the City of Phoenix. This crime reduction has occurred despite an increase in population and a generally depressed economic situation.

Some of the programs that have been particularly successful in reducing crime are sting operations, Neighborhood Block Watch Programs and the overlapping shift deployment of manpower afforded us by our 4-10 Plan.

On the following pages you will find the accomplishments of each of our Department's, Bureaus and Districts.

*Ruben B. Ortega*

RUBEN B. ORTEGA  
Police Chief

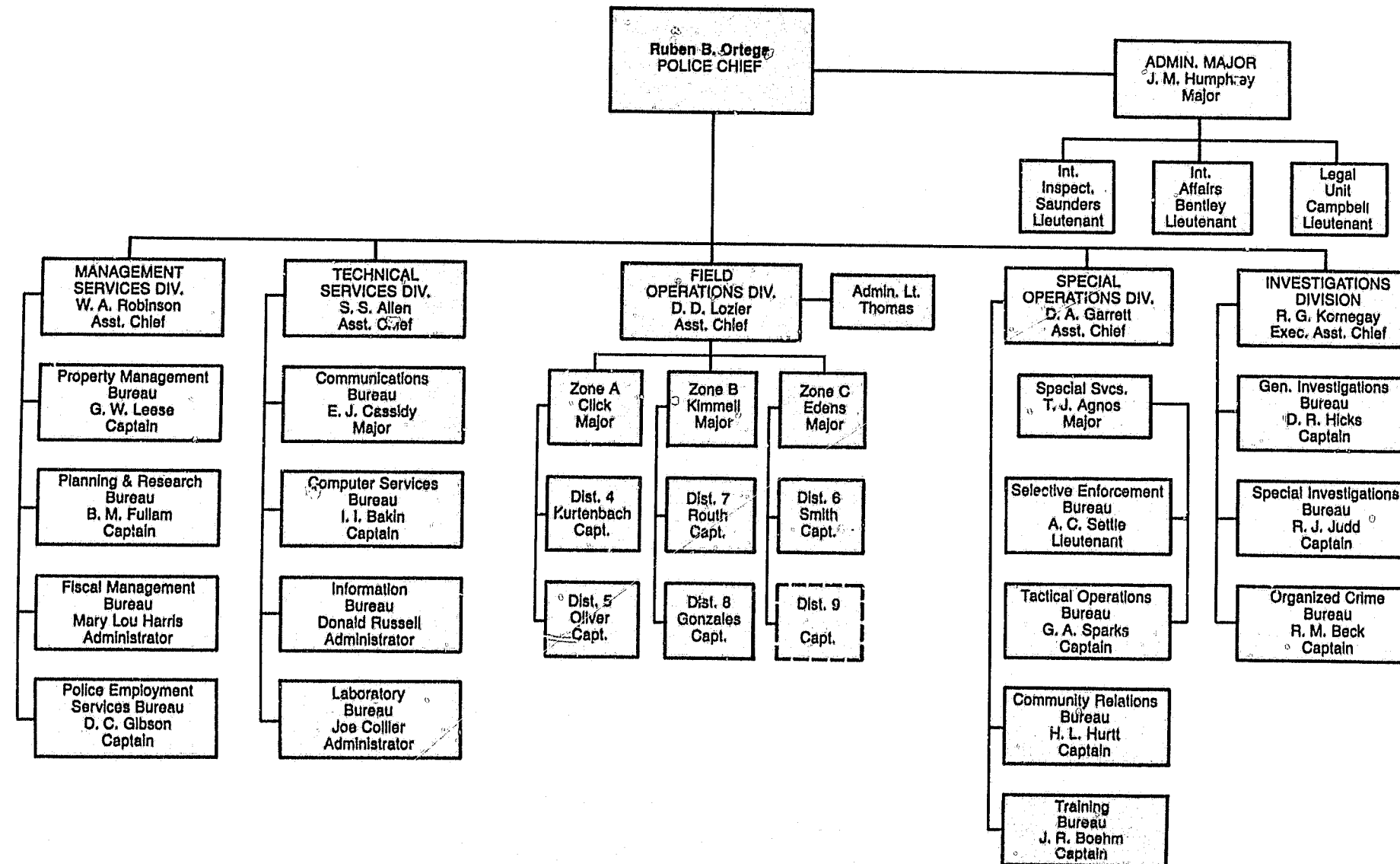
## HISTORY

Phoenix, capital of the State of Arizona, derives its name from the legendary Phoenix Bird, which lived for 500 years, perished in the flames of a funeral pyre and rose from the ashes youthful and strong to begin life anew. So it is with Phoenix, the city, which was built on the remains of an ancient Hohokam Indian settlement and is today the ninth largest city in the United States. Phoenix has grown from a population of 65,000 and an area of ten square miles in 1940, to today's thriving metropolis of 828,415 people living in an area that encompasses 344.4 square miles.

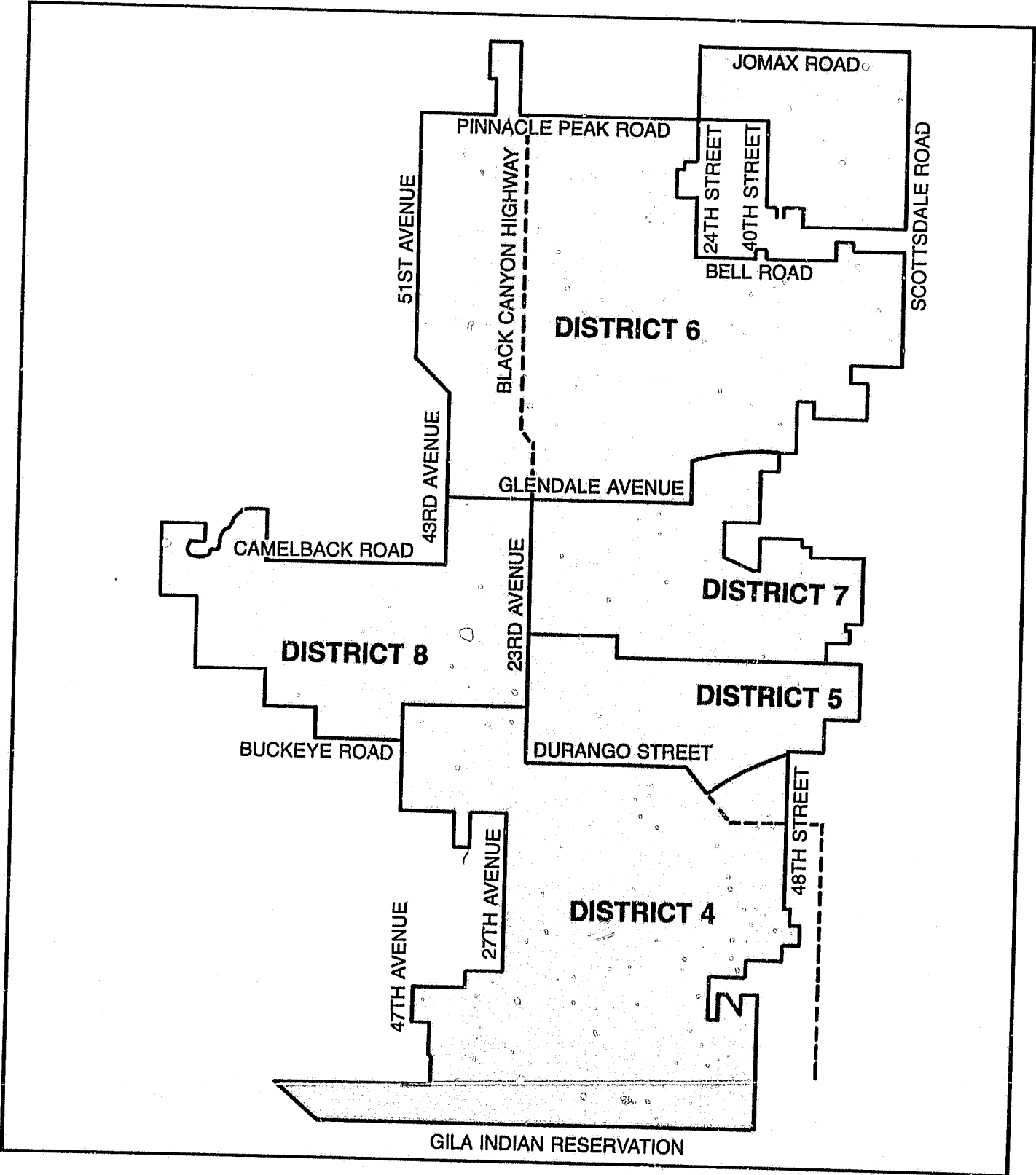
This growth has resulted in an increase in demand for police services and a corresponding increase in police department strength from 173 employees in 1940 to 2,260 authorized employees (sworn and civilian) in 1982.



# ORGANIZATIONAL CHART



**DISTRICT BOUNDARIES**



## OFFICE OF ADMINISTRATION

The Office of Administration within the Police Chief's Office, under the command of Major James M. Humphrey III, is responsible for providing administrative and investigative support services to the Police Chief and his staff.

### LEGAL UNIT

The law specialists provide legal guidance in the daily operations of the Police Department. Law specialists are available 24 hours a day for consultation and assistance in criminal investigations, for review of administrative policies and procedures and for dissemination of legal information.

### Accomplishments

- Consulted on 1,143 criminal cases and 1,760 non-criminal matters.
- Provided civil liability assistance on 411 occasions.
- Reviewed 234 court decisions.
- Assisted other agencies in 231 instances.
- Provided 120 hours of training.

### INTERNAL AFFAIRS BUREAU

The Internal Affairs Bureau is responsible for investigating serious allegations of alleged misconduct by department employees and for providing staff assistance to line supervisors during investigations of alleged misconduct by department employees. In addition, Internal Affairs supervisors investigate officer-involved shooting incidents with the exception of those where injured animals are dispatched.

### Accomplishments

- Responded to 28 call-out investigations after normal duty hours.
- Investigated and reported findings to the Police Chief in 63 cases involving allegations of employee misconduct.
- Investigated 21 police officer-involved shooting incidents.

### INTERNAL INSPECTIONS BUREAU

The Internal Inspections Bureau is responsible for inspecting all elements of the department for compliance in following established procedures, management of material resources; propriety in reporting, auditing of cash flow and accounting procedures; and for conducting personnel inspections to insure that grooming standards are maintained. In addition, Internal Inspections is responsible for providing security for the Mayor and for security at City Council meetings.

### Accomplishments

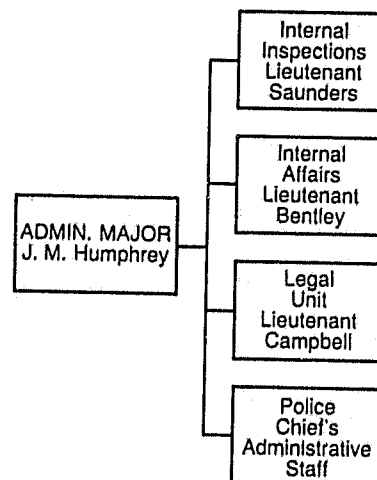
- Conducted 42 facility and personnel inspections.
- Conducted 31 audit inspections.
- Conducted 11 staff requested in-depth inspections.
- Provided personal security for the Mayor in 33 instances.

### POLICE CHIEF'S ADMINISTRATIVE STAFF

The Police Chief's administrative staff is responsible for providing liaison between the department, the City Manager's office and other law enforcement agencies, processing citizens' complaints received in the Police Chief's office, receiving and processing incoming mail including answering correspondence and, for providing staff reports on all grievances requiring resolution by the Police Chief.

### Accomplishments

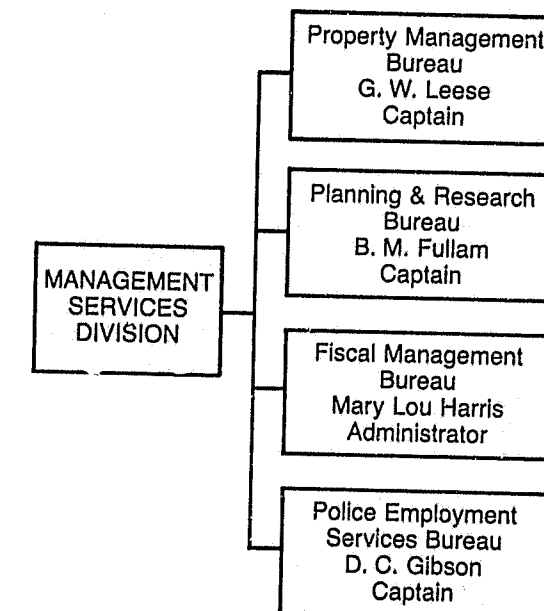
- Provided liaison between the Police Department; other agencies and city management.
- Processed all complaints received in the Police Chief's office.
- Made required replies to correspondence within seven days of receipt.
- Provided staff reports on grievances requiring an answer from the Police Chief.



Assistant Chief  
W. A. "BUD" ROBINSON

The Management Services Division under the command of Chief W. A. "Bud" Robinson is responsible for providing administrative support services to the Department as well as the recruiting, testing and hiring procedures for new, sworn and civilian employees.

## MANAGEMENT SERVICES DIVISION





## PROPERTY MANAGEMENT BUREAU

The Property Management Bureau is a service unit charged with a variety of responsibilities including property impound storage and disposal, central supply receiving and distribution, Police and Public Safety Building management, Department Capital Assets inventory, vehicle fleet and bicycle records, Motor Pool and the Police Warehouse.

### Accomplishments

- Destroyed one million dollars worth of contraband drugs.
- Processed 36,000 new impounded property cases.
- Generated \$163,912 for the city's general fund from the proceeds of police auctions.
- Processed 3,136 guns.
- Issued 29,380 supply or equipment items.
- Placed 155 new vehicles into service and surplus 141 vehicles.
- Maintained the 78 unmarked vehicle Motor Pool.



## PLANNING AND RESEARCH BUREAU

The Planning and Research Bureau is responsible for formulating, evaluating and publishing departmental plans, policies, procedures and programs; performing research analysis and studies of departmental activities, systems and programs; monitoring and coordinating the grant program for the department; performing data systems analysis; answering requests for information from outside agencies; identifying, testing, evaluating and modifying equipment requirements; and the implementation of the departmental capital improvement plan.

### Accomplishments

- Completed a departmental 5-year plan.
- Coded 135,207 departmental reports.
- Published 70 Operations Digests; 13 Supervisors' Newsletters, and the 1981 Annual Report.
- Revised 10 Police Management Regulations and implemented three new Police Management Regulations.



- Prepared materials for two conferences for the Police Chief.
- Prepared 1982-83 Capital Improvement Budget which totals \$6,293,000.
- Totally revised 27 Operations Orders and General Orders.
- Evaluated 101 Employee Suggestions.
- Conducted 199 research studies.
- Monitored and prepared reports for \$657,651 worth of federal and state grants.
- Evaluated a compressed natural gas vehicle for police patrol.
- Conducted a replacement vehicle specification study — Chevrolet Malibu vs. Buick Skylark.
- Provided staff support for Department Shooting Review Board.
- Completed and published 71 recurring reports.

## FISCAL MANAGEMENT BUREAU

The Fiscal Management Bureau is responsible for preparing and administering the annual budget of the Police Department, including maintenance of all purchase orders, submission of a bi-weekly payroll of

approximately 2,288 employees, and updating and maintaining all personnel transactions.

### Accomplishments

- Prepared 1982-83 budget totaling \$79,867,838.
- Prepared three expenditure estimates.
- Readied budget preparation packages and trained department personnel in their use.
- Administered the \$725,000 jail contract.
- Began use of F.A.M.I.S. accounting system on July 1, 1982.
- Maintained an aircraft parts inventory totaling \$236,934.
- Processed all departmental performance ratings and merit raises.
- Continued updating of procedure manuals for the three bureau sections.
- Continued intensive cross training of bureau personnel.

## POLICE EMPLOYMENT SERVICES BUREAU

The Employment Services Bureau actively recruits new officers



and civilian employees and performs the testing and pre-employment processing required by the department. The bureau is also responsible for maintaining all departmental personnel files, grievance files, the Equal Employment Opportunity Program, processing of departmental awards, and coordinating the professional psychological services available to sworn officers and their families.

### Accomplishments

- Coordinated the Lieutenant and Captain promotional examinations.
- Assumed responsibility for coordination and dissemination of information to the Disciplinary Review Board.
- Conducted 21 recruiting presentations around the state.
- Developed a pre-examination study booklet for police recruits.
- Maintained the department's Affirmative Action Program.
- Assisted families of five police officers who died, either on or off duty, with funeral arrangements and the coordination of benefits.
- Prepared and coordinated honor award presentations for 77 departmental employees.

## PHOENIX POLICE RESERVE

The Phoenix Police Reserve is composed of men and women who volunteer their time and talent to the Police Department. Each reserve officer is required to participate in 410 hours of basic training, thus qualifying as graduates of the Reserve Academy for full Arizona Law Enforcement Officer Advisory Council certification.

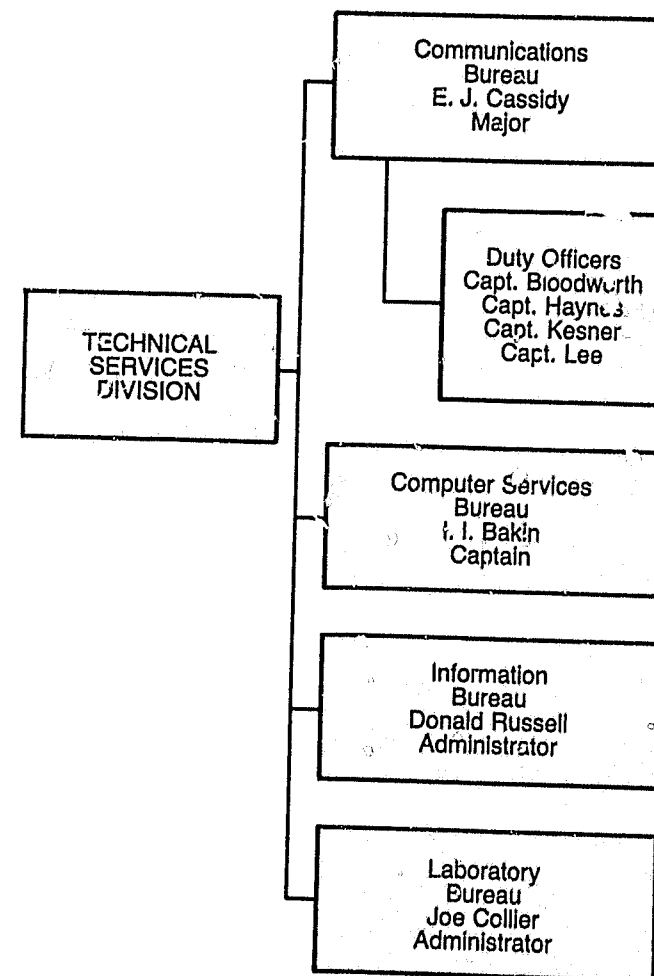
Nineteen eighty-two was an extremely active year for the officers of the Phoenix Police Reserve. Reserve officers, in addition to their regular patrol requirements, participated in a number of special events which included 153 man-hours of

service for the Fiesta Bowl Parade; participated in numerous crime resistance fairs conducted by the districts; continued assistance to the Community Relations Bureau by providing staffing for the Department's State Fair display; assisted the Special Investigations Bureau in providing personnel for the Customer Apprehension Program; made a special effort to provide additional reserve officers during the Police Olympics to allow a larger number of regular officers to participate in the athletic programs, and participated in the Department's Courteous Driver Awards Program.

Officers of the Police Reserve donated over 32,000 hours to the department during 1982, 22,000 of which were patrol time or activities directly related to the support of patrol officers and functions. For the first time in the history of the Reserve, the average time per officer exceeded 500 hours.

The recruiting of new reserve officers again received a high priority in the administration of the Police Reserve. Reserve Officers participated actively in a large number of radio/TV appearances, civic group presentations, shopping center recruiting displays, and a variety of other activities which provided an opportunity to actively inform the public about the Phoenix Police Reserve. The result of this increased recruiting activity was a 5.8% increase in the number of applicants in 1982 as compared to 1981. Consequently, it is anticipated that the Phoenix Police Reserve will number in excess of 100 reserve officers before the end of calendar year 1983.

## TECHNICAL SERVICES DIVISION



**Assistant Chief  
SETH S. ALLEN**

The Technical Services Division under the command of Assistant Chief Seth S. Allen is responsible for providing centralized support services to the department.

The Duty Officers have command responsibility for the department after normal business hours, on weekends and holidays.

## COMMUNICATIONS BUREAU

The Communications Bureau is responsible for the efficient operation of the police radio function and for the operation of Crime Stop, a program utilizing bureau personnel to evaluate calls and dispatch officers when necessary. Additionally, the bureau processes departmental reports (DRs), issues and controls DR numbers and is responsible for the administration of the city's false alarm ordinance.

During August 1982, the Crime Stop operator positions and the radio dispatcher positions were reclassified to one classification called communications operators. Extensive cross-training of the two positions has been completed, however, cross-training will continue on a voluntary basis. Such cross-training will allow for greater flexibility in utilization of personnel.

### Accomplishments

- Answered 985,876 Crime Stop telephone calls, 95% of which were answered within 10 seconds.
- Resolved 60% of all Crime Stop calls without having to dispatch



- an officer.
- Dispatched officers on 396,896 calls for service.
- Communications Bureau secretaries processed 135,206 departmental reports.
- Processed 23,000 false alarms.
- Made in excess of 400,000 computer inquiries to the Arizona Crime Information Center/ National Crime Information Center for warrant information, record checks, stolen vehicle checks and stolen property checks.

## COMPUTER SERVICES BUREAU

The Computer Services Bureau is responsible for providing state-of-the-art computer technology as it relates to public safety applications. Currently, the bureau operates and maintains three on-line computer systems which include Computer Aided Dispatch (CAD), Computer Aided Police Records Index (CAPRI) and Mobile Digital Terminal (MDT). Other functions performed by the bureau include the maintenance of computer peripheral equipment; maintenance of Police and Public Safety Building video

security system; installation, maintenance and removal of burglary cameras and intrusion alarms, and the maintenance, testing and repair of electronic surveillance equipment.

### Accomplishments

- Evaluated 65 requests for systems' enhancements from within the department and implemented 45 of them.
- Participated in a feasibility study for regionalization of police CAD to include Glendale, Scottsdale and Tempe.
- Expanded the CAPRI system service to the District Stations, the Tactical Operations Bureau Units at Deer Valley and Sky Harbor Airports, and the City Prosecutor's Office.
- Justified the need to upgrade the CAD and CAPRI systems; issued a request for proposal for replacement systems.
- Participated in the definition of city-wide microcomputer usage guidelines and initiated the formation of a city-wide microcomputer users' group.
- Completed a feasibility study for a Police Automated Computer





- Entry (PACE) system and designed a prototype to be implemented in 1983.
- Trained 200 investigators in telephone surveillance techniques and basic photography.
  - Designed, built and installed an aircraft call-up system to enhance voice communications for air support activities.

### INFORMATION BUREAU

The Information Bureau is responsible for maintaining departmental reports, arrest records, warrant files, fingerprints and photographs, location and victim files, combination cards, suspect files, and all traffic records. The bureau also provides fingerprints to the public, as well as non-confidential police report information on specific incidents and traffic accident reports and pictures. Bureau technicians process major crime scenes for latent prints and photograph crime scenes.

The Information Bureau operates with 113 full-time and 8 part-time employees and is totally civilianized.

### Accomplishments

- Serviced 209,851 counter and will-call requests for information.
- Responded to 187,238 telephone requests for information.
- Processed and filed 241,766 index cards on victims and locations of offenses.
- Processed 563,182 ACIC/NCIC name checks.
- Processed 10,121 fingerprints from crime scenes.
- Dusted 2,412 crime scenes for latent fingerprints and identified 579 suspects.
- Photographed 4,104 crime scenes.
- Processed 178,746 incoming and cancelled city warrants.
- Classed and searched 29,885 sets of fingerprints, an increase of 5,242 over 1981.

### LABORATORY BUREAU

The Laboratory Bureau provides technical and analytical support for the Phoenix Police Department. The scientific staff is composed of nine criminalists who perform the scientific analyses and comparisons requested by officers and detectives. Laboratory services include crime scene support as well as expert testimony in legal proceedings.

The laboratory received 5,640 cases in 1982 and conducted 83,922 examinations. The laboratory's analytical capability was expanded by the addition of one computerized infrared spectrophotometer, one scanning densitometer and a computerized breath testing instrument.

### Accomplishments

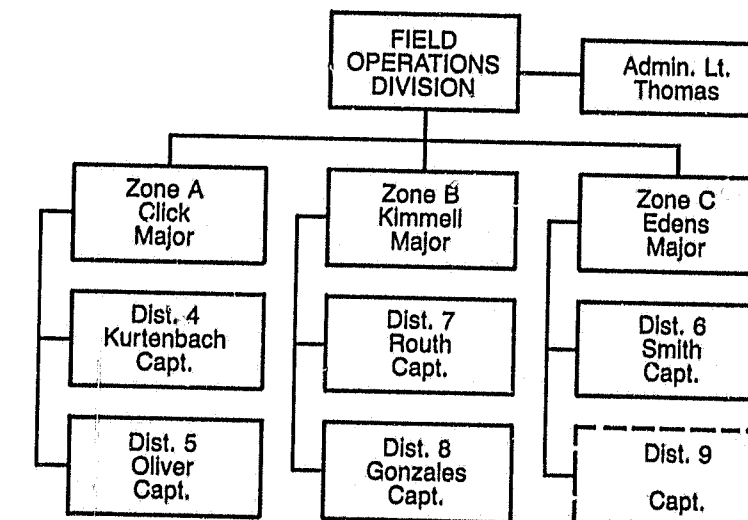
- Provided Mark IV Gas Chromatograph Intoximeter field collection unit training for 60 officers.
- Instructed two Police Academy classes and two Reserve Officer classes on the use of the Crime Laboratory and scientific evidence.
- Taught drug screening classes for three groups of officers.
- Presented specialized lectures and demonstrations to a wide assortment of professional and educational groups on various aspects of Forensic Science.
- Conducted a special officer's school for two groups of officers.
- Criminalists appeared in various courts as expert witnesses on 235 occasions.
- Provided tours of the Crime Laboratory for 2,485 people.



Assistant Chief  
DONALD D. LOZIER

The Field Operations Division under the command of Assistant Chief Donald D. Lozier, has primary responsibility for the protection of life and property and the preservation of law and order.

## FIELD OPERATIONS DIVISION



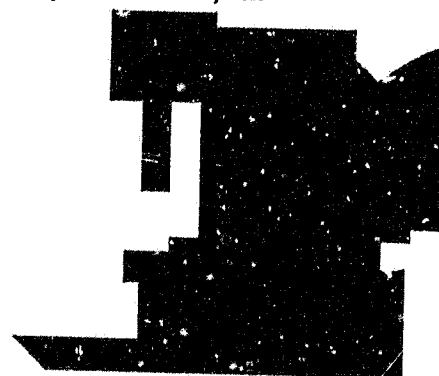
## FIELD OPERATIONS DIVISION

The Field Operations Division is organizationally divided into three patrol zones, each under the command of a police major. Patrol zones are further divided into districts under the command of a police captain. There are five district briefing stations serving the citizens of Phoenix. A sixth district briefing station is currently under construction and is scheduled for completion during June, 1983.

### Accomplishments

- Responded to 438,302 calls for emergency and non-emergency service, compared to 449,627 in 1981, a decrease of 2.5%.
- Made 47,254 arrests in the field compared to 42,984 in 1981, an increase of 9.9%.
- Spent 392,852 hours on preventive patrol compared to 386,472 in 1981, an increase of 1.7%.
- Travelled 10,768,701 miles on active and preventive patrol compared to 9,648,442 in 1981, an increase of 1.16%.

### DISTRICT 4 South Mountain Station Area: 95 Square Miles Population: 107,942



District 4 initiated a Physical Fitness Program in July, 1982. The program is designed for personnel to improve their absolute strength,

dynamic strength and flexibility. Camaraderie is an added benefit as personnel can spend time together enjoying both the exercise and good company. The program is so successful that the weight machine and officers' personal weights were moved into larger quarters to accommodate their increased use.

The South Phoenix Businessmen's Association hosted a District Awards Banquet at the Thunderbird Country Club to recognize all of the "Officers of the Month" and to honor the District 4 "Officer of the Year."

Team 43 mounted a board containing photographs of personnel assigned to the various district squads. As Team Policing and 4-10 scheduling makes it difficult for personnel to see one another, the picture board provides a means for team members to see who else is working their team area.

District 4 consolidated all of the area Block Watch groups into one cohesive organization called the South Mountain Block Watch Association. Members of the association elected a board of directors who meet with district personnel on a



monthly basis. The association distributes a monthly Block Watch Newsletter which details association activities.

### DISTRICT 5 Sky Harbor Station Area: 25 Square Miles Population: 80,108



During 1982, District 5 launched several pilot crime reduction programs. These programs included team burglary reduction cars, specialized walking beat officers and an intensified community involvement campaign. The district's successes in community involvement programs are reflected in a 78% increase in Officer Friendly presentations and a 198% increase in crime prevention programs.



Self-protection seminars for women and the elderly were offered to district citizens. These seminars presented self-protection techniques to those citizens who were most likely to be exposed to crimes of violence.

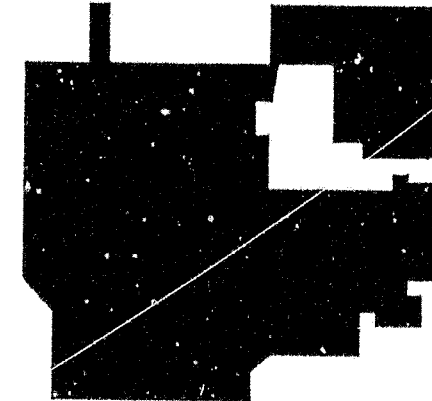
"Knock As You Walk" and "Business Watch" were new programs implemented in 1982. These programs had officers routinely contacting citizens in their homes and businesses to make them aware of the various security programs that were available.

Other successful programs implemented in 1982 included the development of special trespassing enforcement programs in the housing project areas and the promotion of McGruff as a crime prevention symbol in the schools.

During 1982, District 5 personnel answered 146,450 calls; made 12,901 arrests; investigated 5,780 accidents; wrote 41,692 citations; issued 11,363 parking tickets; recovered 748 stolen vehicles and trained 27 recruits.



### DISTRICT 6 Union Hills Station Area: 148 Square Miles Population: 290,857



District 6 personnel are responsible for providing police services to the citizens of Phoenix who live north of Glendale Avenue. This area is one of the most rapidly expanding in terms of population and contains 42% of the City's total area.

During 1982, the traffic investigators consisting of nine motor officers and seven civilian accident



investigators, investigated 67% (5,359) of the 8,021 reported accidents.

District 6 personnel responded to 102,734 total calls for service; issued 52,942 citations and the Call-back Program processed 20,843 calls.

### DISTRICT 7 Squaw Peak Station Area: 50 Square Miles Population: 174,547



During 1982, District 7 rebuilt their "Phil, the Talking Car" program by creating a new electronic program system and installing it in a new patrol car. The district also built "Phil, Jr.," a miniature talking car that performs all of the functions of the full-sized "Phil."

District 7 presented a Crime Resistance Fair at the Colonnade Mall in August. The fair received excellent participation from Valley residents and visitors.

The district developed a Detective Case Management System which provides case accountability and a case screening system which determines the likelihood of case solvability and prosecution.

An effective slide presentation and instruction manual were created by district personnel to assist in the presentation of Block Watch programs.

During 1982, a Community Services Officer Program was implemented. This program assigns officers to Camelback and Central high schools to serve as liaison with

school authorities and students to determine current and future problem areas. This allows the use of preventative measures to avert major confrontations.

The district initiated a Robbery Procedure Packet Program whereby packets containing suspect description forms, witness statements, and a pamphlet describing actions to take before, during and following a robbery were distributed to area convenience markets.

**DISTRICT 8**  
Maryvale Station  
Area: 62 Square Miles  
Population: 174,961

District 8 is committed to working with the community to solve mutual problems. Programs such as the West Phoenix Block Watch Association, the Community Assist League and the Annual Crime Fair held at the Maryvale Mall under the cosponsorship of the Maryvale Mall Merchant's Association are indicative of the district's cooperation with the community. One of the results of the Crime Fair was the addition of 100 new Block Watches to the community.

District 8 has Community Service Officers assigned to each team who work out of the four high schools located within the district. The officers provide assistance in reducing dropout rates and absenteeism as well as preventing violent campus

situations. These officers also conduct workshops on gang identification for the faculty, community organizations and parent organizations.

District personnel, the West Phoenix Chamber of Commerce and the Phoenix Parks and Recreation Department sponsored the annual "West Is Best Fair Days" in April. Crime prevention and Block Watch programs were presented at the fair.

In November, District 8 personnel and the West Phoenix Block Watch Association participated in a community carnival at Isaac Junior High School. In December, the district's Christmas project provided 41 needy families with food and gifts for the holiday.

On May 24, 1982, District 8 implemented a district-level sting operation known as "Project Snowball." This project was responsible for 141 felony arrest/indictments, recovering \$180,090 worth of stolen property and clearing 184 cases. As a result of the resounding success of Project Snowball, similar operations are being implemented in other patrol districts.



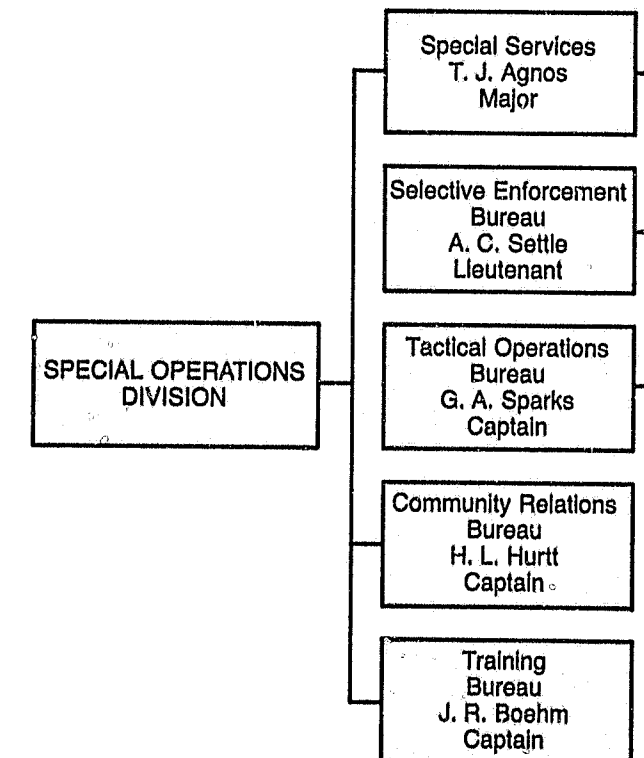
Sting transaction



Assistant Chief  
DENNIS A. GARRETT

The Special Operations Division under the command of Assistant Chief Dennis A. Garrett is responsible for the monitoring of various activities that have the potential for racial or civil disorders; creating public awareness of departmental policies, procedures and programs through public information and youth programs; and the recruit-training and in-service training programs.

## SPECIAL OPERATIONS DIVISION



## SELECTIVE ENFORCEMENT BUREAU

The Selective Enforcement Bureau (new this year) is largely responsible for handling all traffic related functions not assigned to the districts. In addition, the bureau is responsible for maintaining liaison with the city court system, managing the Police Department's Traffic Accident Data System and patrolling the city's parks.

### Accomplishments

- Oversaw the formation of a squad of select motor officers whose goal is the reduction of traffic accidents.
- Saved the districts over 1,680 man-hours by handling dignitary escorts and special events.
- Responsible for the Public Awareness Campaign on the 7th Street Reverse Lane.
- Reduced accidents in select areas by 12.25%.
- Issued 176,089 parking notices.
- Served over 52,421 subpoenas.
- Transported 4,416 prisoners to and from court.
- Processed and signed 9,051 criminal complaints.

## TACTICAL OPERATIONS BUREAU

The Tactical Operations Bureau is divided into three separate units — Air Support, Special Assignments, and Airport Security.

### Air Support Unit

The Air Support Unit is housed at the Deer Valley Airport. The unit operates a fleet of seven helicopters and three fixed wing aircraft in support of the patrol and criminal investigations functions of the Police Department.

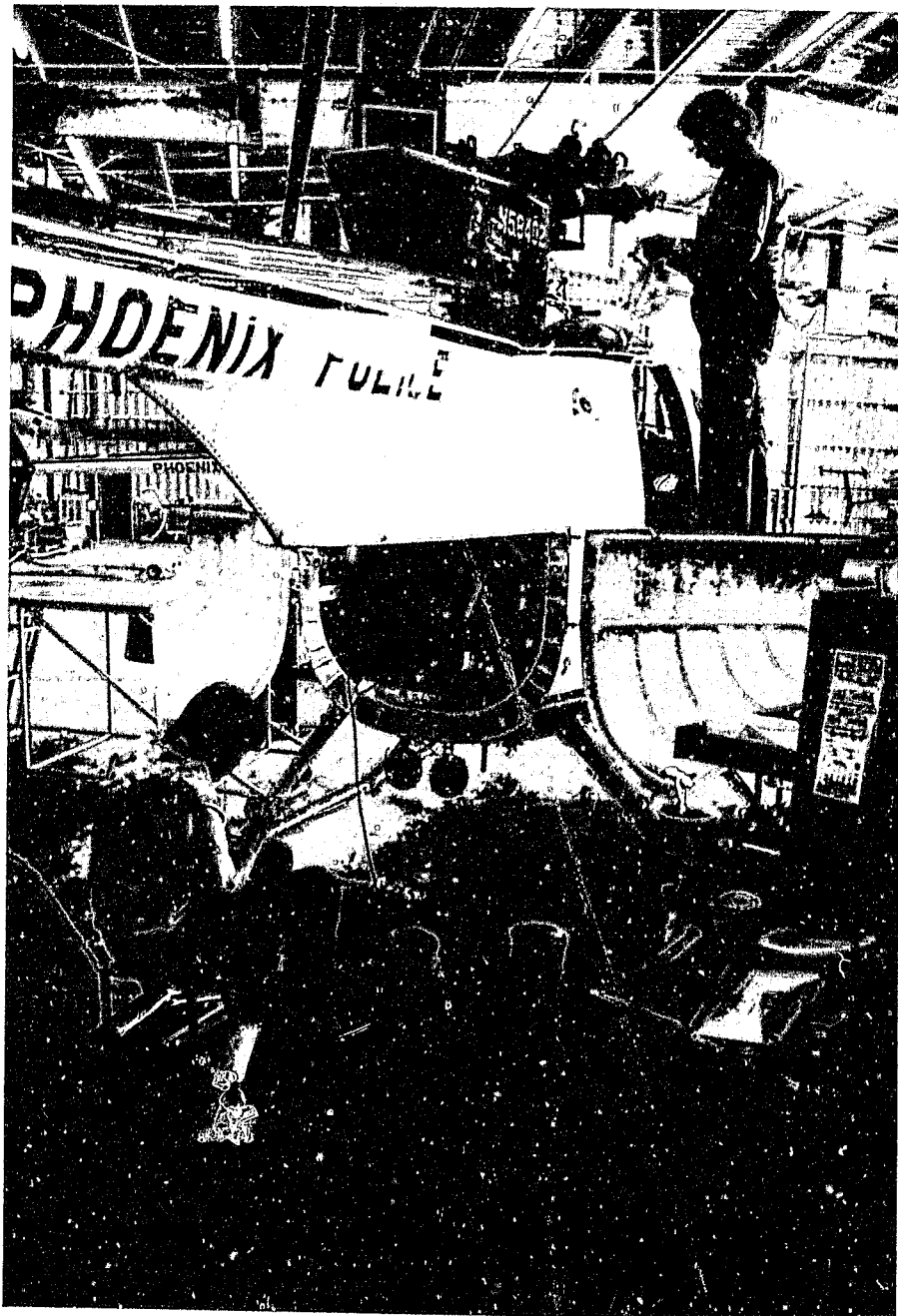
### Accomplishments

- Flew a total of 5,633 hours.
- Responded to requests for service (while airborne) within 1.5 minutes.

- Flew 503 surveillances with a total airtime of 1,050 hours.
- Provided 2,545 hours of helicopter patrol.
- Assisted with 506 arrests.
- Expended 252 hours on maintaining and upgrading pilot proficiency.

## Special Assignments Unit

The Special Assignments Unit (SAU) conducts surveillances and stakeouts of known or suspected criminals in high crime areas and performs other tactical functions as required. SAU works closely with other department details to develop



information, identify and ultimately arrest known criminals.

### Accomplishments

- SAU was involved in, and successfully completed, 12 barricade or special situations without injury to SAU officers, hostages or suspects.
- Provided protection for President Reagan during his visit to Phoenix.
- Recovered \$689,152 worth of stolen property.
- Made 513 felony arrests.
- Provided 40 hours of training for new unit personnel.
- SAU Canine Detail responded to 2,510 calls; conducted 966 patrol searches, 43 explosives searches and 35 narcotics searches; made 176 arrests; recovered \$43,760 worth of stolen property and located 31 pounds of marijuana as well as one pound of cocaine.

### Airport Security Detail

The primary function of the Airport Security Detail is to provide a safe environment for the flying and motoring public using the facilities at Sky Harbor International Airport. Approximately 30 million people used the facilities at Sky Harbor International Airport during 1982. This is a 15% increase over 1981.

### Accomplishments

- Answered 5,899 calls for service.
- Issued 836 moving violation citations.
- Made 84 arrests.
- Recovered 35 stolen vehicles.
- Investigated three aircraft accidents, 15 cases of carrying concealed weapons and four bomb threats.
- Confiscated 40 weapons found during the preboarding screening process.
- Issued 27,918 parking citations.

## COMMUNITY RELATIONS BUREAU

The Community Relations Bureau is responsible for police/youth involvement programs such as Police Activities League (PAL) and an Explorer Post. It is also responsible for conducting public information programs; maintaining positive working relations with the media; and minimizing potential racial, civil and special interest group disorders. Another aspect of bureau operations involves a comprehensive gang activity monitoring and diversionary effort.

The Silent Witness program, now in its fourth year of operation, continues to provide valuable information which aids in the solution of many crimes.

### Accomplishments

- The Silent Witness program assisted with the arrest of 181 suspects, cleared 169 cases, and recovered \$273,646 worth of stolen property as well as 3.5 pounds of heroin with a street value of

\$20,000,000. Silent Witness received 1,157 calls and paid \$22,405 in rewards to anonymous informants.

- Human Relations/Confrontation Prevention Officers expended 6,719 man-hours in the investigation of citizen complaints, neighbor disputes, property loss claims, and 5,534 man-hours on school campuses for the prevention of student disorders.
- Public information officers made 1,079 public appearances and 1,536 radio and television appearances. In addition, they sponsored several special promotions such as Toys for Tots, and participated in child safety programs with companies in the private sector.
- The Juvenile Crime Reduction Unit spent 11,396 man-hours on the prevention of, and intervention in, gang activities.
- Construction was begun on a new west side PAL facility with land, labor and materials donated by the private sector.



## TRAINING BUREAU

The Training Bureau's responsibilities are many and varied. Among these is a vigorous 14-week training program for police recruits which includes: criminal law, accident investigation, shooting techniques, defensive driving, policies and procedures and physical training. In 1982, the bureau added an advanced training sergeant and developed a new system for in-service training. The system incorporates training representatives for each bureau and district and establishes a training committee to determine the type of training needed and the format in which it should be developed.

The Video Services Unit also added an additional employee and began utilizing its new production facilities at an accelerated rate. The unit provides training tapes, informational tapes, and developed a new concept called the Video Hot Sheet. The Video Hot Sheet disseminates information to the department on criminal activities in a timely manner through the use of video tapes. The Video Services Unit is also responsible for taping and distributing the Silent Witness segments aired weekly on local television stations.

Range personnel are in the process of building two additional shooting ranges which can be used as both pistol and shotgun courses. A new automated trap for trap shooting was installed on one of the lower ranges for advanced training with departmental shotguns.

### Accomplishments

- Graduated 81 Phoenix police officers and 68 police officers for other jurisdictions, utilizing counselors from several agencies to promote the regional training theme.



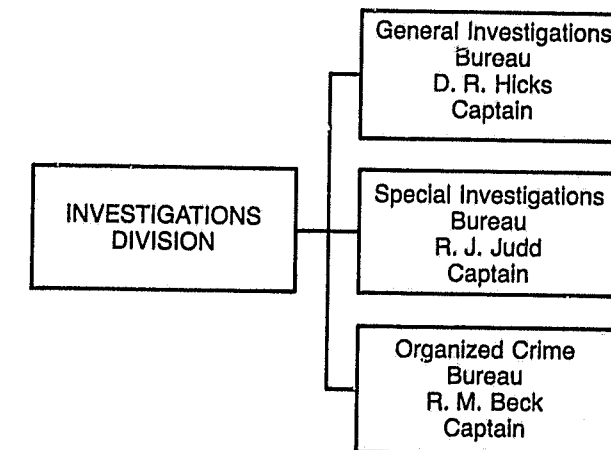
- Redesigned the shotgun range by adding turning targets, thereby increasing the range capacity from 72 points to 96 turning target positions.
- Conducted 28 outside agency shoots.
- Conducted one N.R.A. course.
- Graduated a reserve recruit class of 11 reserve officers.
- Conducted drivers training for a total of 415 students including 118 from other jurisdictions, two civilians and 24 reserve officers.
- Conducted motorcycle training for 29 students including seven from other agencies.
- Sent 114 officers to ALEOAC seminars/workshops for a total of 2,642 hours.
- Provided in-service training for 923 officers for a total of 23,042 hours.
- Provided in-service training for 174 civilians for a total of 3,374 hours.



**Executive Assistant Chief  
Robert G. Kornegay**

The Investigations Division, under the command of Executive Assistant Chief Robert G. Kornegay, is responsible for the centralized investigation of selected crimes throughout the city.

## INVESTIGATIONS DIVISION





## GENERAL INVESTIGATIONS BUREAU

The General Investigations Bureau has the responsibility for the investigation and case preparation for criminal prosecution of most of the major crimes occurring in the City of Phoenix.

During 1982 the Crime Analysis Unit was transferred to the Management Services Division's Planning and Research Bureau with General Investigations retaining a smaller unit called the Information Support Unit. This unit provides access to computer-stored information that can assist investigators and other officers of the department.

The four arson investigators placed under the functional supervision of the Fire Department in 1979, for interdepartmental arson investigation training purposes, became Fire Department personnel with responsibility for the investigation of arson crimes.

### Accomplishments

- Concluded "Ferret," a sting project which was directed toward property crime violators and organized fencing operations. This project resulted in the recovery of \$1,571,242 worth of stolen property and 510 felony charges brought against 170 suspects.
- Cleared 57% of the 29,902 criminal reports received including: 74% of the 103 homicide cases; 18% of the 6,160 auto theft cases; 60% of the 3,378 hit-and-run cases; 51% of the 754 sexual assault cases and 63% of the 198 child abuse cases.
- Served 35,613 misdemeanor warrants.
- Submitted 8,121 cases to the County Attorney, 57% — 4,667 of which were accepted for a criminal complaint.

## SPECIAL INVESTIGATIONS BUREAU

The Special Investigations Bureau is responsible for the investigation of illegal vice and narcotics activity in the City of Phoenix, and is organized into three separate units consisting of the Drug Enforcement Unit, Vice Enforcement Unit, and the Administrative Unit.

The Drug Enforcement Unit is responsible for the investigation of the illegal use, sale and trafficking of illicit drugs, follow-up on any drug activity complaints and the investigation of prescription-related offenses.

The Vice Enforcement Unit is responsible for the enforcement of prostitution, public sexual indecency, gambling and pornography. The unit also provides follow-up investigations on vice complaints and conducts background investigations into license applications for liquor, games, photography, bail bonds, etc.

The Administrative Unit is responsible for processing all departmental reports of drug violations and releasing property.

### Accomplishments

- Arrested 1,798 persons for narcotics, vice and other offenses resulting in 2,398 charges being filed.
- Seized \$3,551,489 worth of narcotic drugs, marijuana, currency and miscellaneous property.
- Detectives assigned to the Vice Investigations Unit arrested 25 suspects for receiving the earnings of a prostitute or pandering on 27 charges.
- Contributed \$6,556 to the City of Phoenix general fund as the result of the sale of vehicles seized for transporting narcotics and court ordered forfeiture of cash used in illegal narcotic transactions.

## ORGANIZED CRIME BUREAU

The Organized Crime Bureau's responsibilities are to collect, analyze and maintain information which will be utilized in preparing cases for prosecution of persons, organizations and/or corporations involved in organized criminal activities affecting the City of Phoenix. The bureau is also responsible for the analysis and dissemination of information on criminal activities from intelligence data and conducting lengthy investigations. The bureau provides the necessary dignitary protection for those who require this service while in the City of Phoenix.

### Accomplishments

- The investigation and convictions of a large jewelry fencing operation which had netted \$250,000 in recovered property resulted in a RICO (Racketeer Influenced and Corrupt Organizations) judgment of \$116,000. In addition, a second RICO judgment for \$10,000 was brought against a suspect involved in the fencing operation who had allegedly sold \$7.5 million worth of stolen gold and jewelry to a Midwest refiner.
- Concluded a major investigation into gold thefts at a highly technical facility which resulted in eight indictments and convictions, the recovery of \$50,000 worth of gold and a court order for the restitution of \$50,000.
- A major fraud scheme, which occurred in a Phoenix bank, was investigated and resulted in the conviction of the perpetrator and a court order for the restitution of \$30,000.
- Planned, organized and directed 13 separate protection details including the protection of President and Mrs. Reagan, former President and Mrs. Ford and other dignitaries.





## IN MEMORIAM

Officer Ignacio Conchos, July 1, 1982

Detective John Russ Davis, August 6, 1982

These officers died as the result of wounds received while serving their fellow citizens.

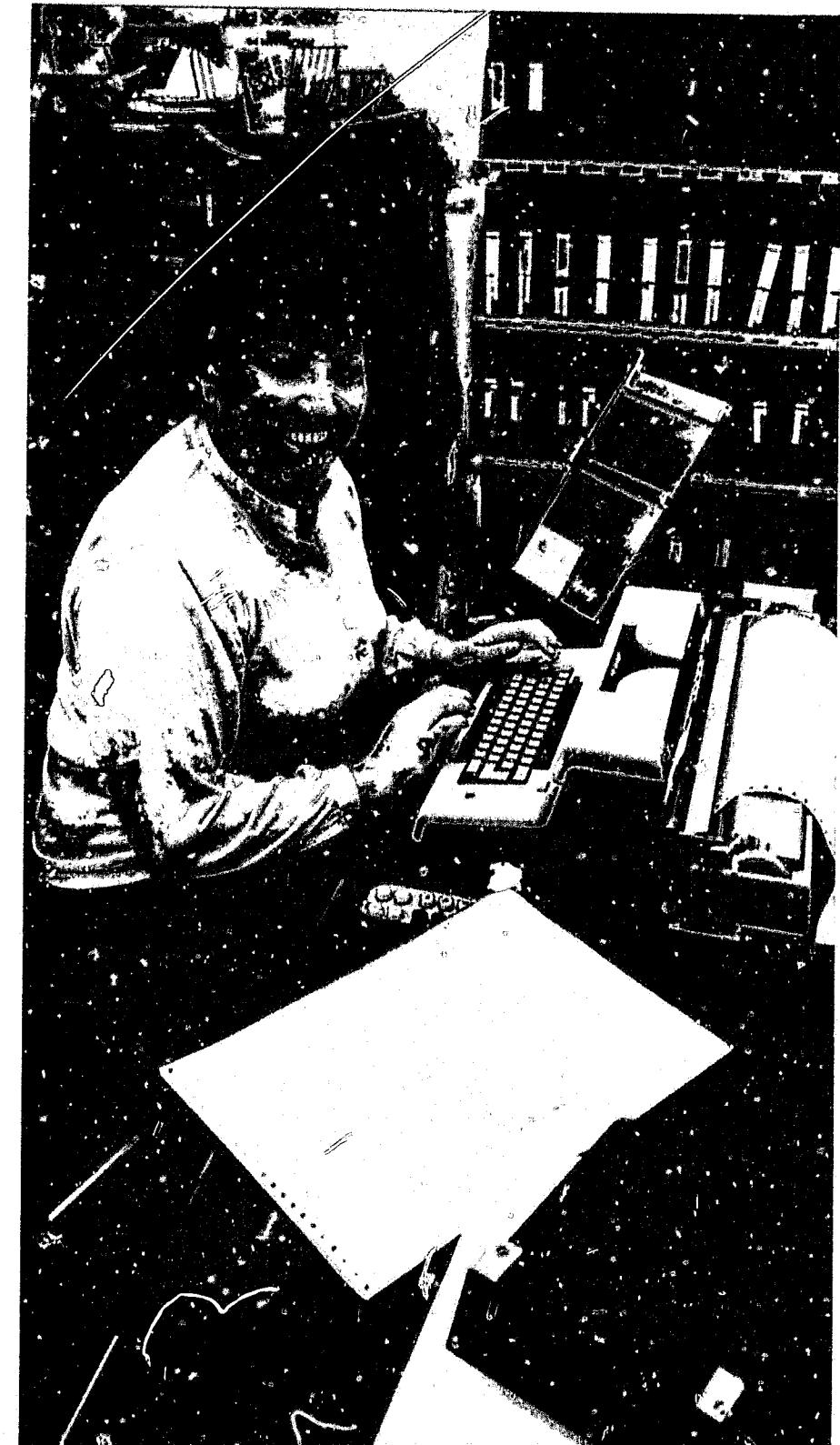
Officer Raymond Charles Shaar, August 29, 1982

Officer George Loy, August 31, 1982

Officer Daniel Sesma, November 21, 1982

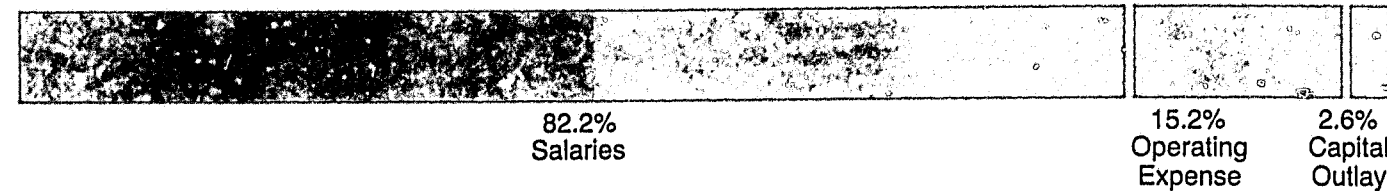
Retired Police Sergeant Vernon Wingfield, March 15, 1982

## DEPARTMENTAL STATISTICS



## DEPARTMENT BUDGET

### Distribution of Police Budget 1982-83



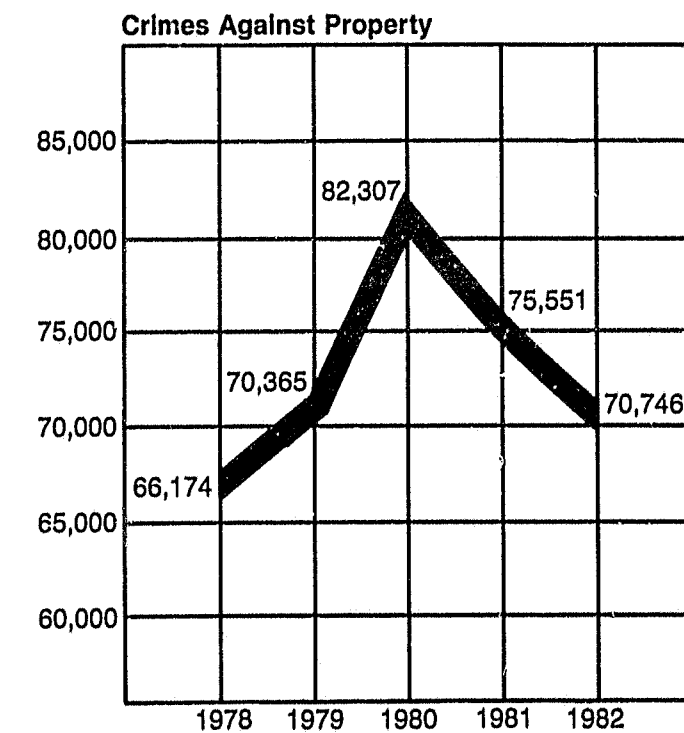
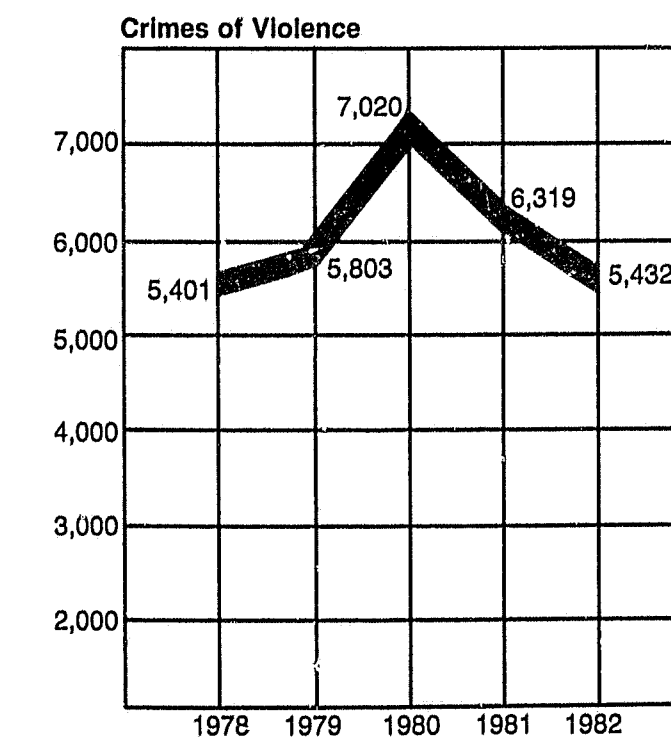
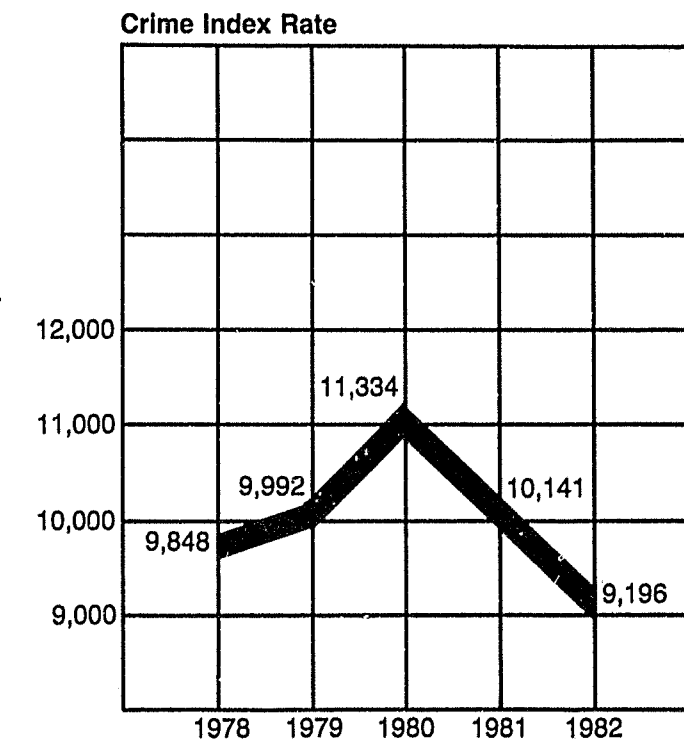
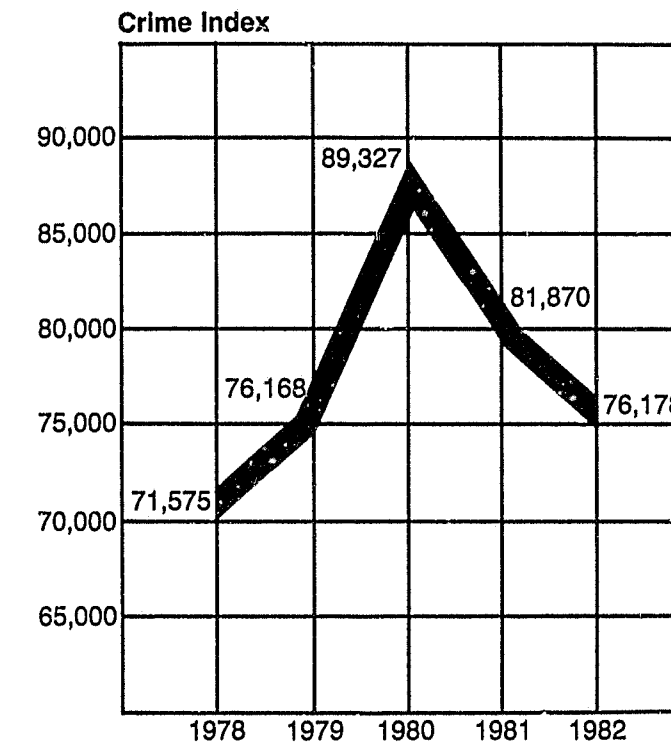
### Department Operating Budget Police Budget Trends for Fiscal Years 1978-79 Through 1982-83

| Activity                          | FY 1978-79   | FY 1979-80   | FY 1980-81   | FY 1981-82   | FY 1982-83   |
|-----------------------------------|--------------|--------------|--------------|--------------|--------------|
| SALARIES                          | \$45,759,537 | \$47,882,595 | \$54,549,688 | \$59,888,764 | \$65,655,798 |
| NUMBER OF EMPLOYEES               | (2,111)      | (2,203)      | (2,243)      | (2,247)      | (2,260)      |
| OPERATING EXPENSES                | 8,176,152    | 9,960,200    | 11,274,806   | 10,985,999   | 12,104,801   |
| CAPITAL OUTLAY                    | 545,464      | 187,675      | 369,819      | 198,012      | 2,107,239    |
| GRAND TOTALS                      | \$54,481,153 | \$58,030,470 | \$66,194,313 | \$71,072,775 | \$79,867,838 |
| PERCENT CHANGE OVER PREVIOUS YEAR | +11%         | +7%          | +14%         | +7%          | +12%         |

### Classification of Personnel 1982

| Rank and Job Title                                   | Authorized Positions 1982 |
|--|---------------------------|
| Police Chief   | 1                         |
| Assistant Police Chief (1 Executive Assistant Chief) | 5                         |
| Major  | 6                         |
| Captain  | 19                        |
| Lieutenant (Includes 1 Law Specialist)               | 55                        |
| Sergeant (Includes 1 Law Specialist)                 | 222                       |
| Police Officers                                      | 1,349                     |
| Total Sworn  | 1,657                     |
| Total Civilian                                       | 607                       |
| Total Employees                                      | 2,264                     |
| Total Sworn per 1,000 Population                     | 2.00                      |
| Total Civilian per 1,000 Population                  | .73                       |
| Total Employees per 1,000 Population                 | 2.73                      |

### Crime Index Graphs — 5 Years



**Crime Trends — Number — Rate  
1981–1982**

| Index Offenses          | Year | Number of Offenses | Percent Change | Rate Per 100,000 Inhabitants | Percent Change |
|-------------------------|------|--------------------|----------------|------------------------------|----------------|
| Crime Index             | 1981 | 81,870             |                | 10,141.14                    |                |
|                         | 1982 | 76,178             | – 7%           | 9,195.62                     | – 9%           |
| Crimes of Violence      | 1981 | 6,319              |                | 782.72                       |                |
|                         | 1982 | 5,432              | – 14%          | 655.71                       | – 16%          |
| Murder                  | 1981 | 96                 |                | 11.89                        |                |
|                         | 1982 | 96                 | —              | 11.59                        | – 3%           |
| Rape                    | 1981 | 408                |                | 50.54                        |                |
|                         | 1982 | 431                | + 6%           | 52.03                        | + 3%           |
| Robbery                 | 1981 | 2,696              |                | 333.95                       |                |
|                         | 1982 | 2,402              | – 11%          | 289.95                       | – 13%          |
| Aggravated Assault      | 1981 | 3,119              |                | 386.34                       |                |
|                         | 1982 | 2,503              | – 20%          | 302.14                       | – 22%          |
| Crimes Against Property | 1981 | 75,551             |                | 9,358.29                     |                |
|                         | 1982 | 70,746             | – 6%           | 8,539.91                     | – 9%           |
| Burglary                | 1981 | 23,052             |                | 2,855.39                     |                |
|                         | 1982 | 21,482             | – 7%           | 2,593.14                     | – 9%           |
| Theft                   | 1981 | 46,977             |                | 5,818.91                     |                |
|                         | 1982 | 44,347             | – 6%           | 5,353.23                     | – 8%           |
| Auto Theft              | 1981 | 5,022              |                | 622.06                       |                |
|                         | 1982 | 4,394              | – 13%          | 530.41                       | – 15%          |
| Arson                   | 1981 | 500                |                | 61.93                        |                |
|                         | 1982 | 523                | + 5%           | 63.13                        | + 2%           |

Population: December 31, 1981 — 807,316  
December 31, 1982 — 828,415

**An Analysis of Crime Index Offenses  
1981–1982**

| Murder                 | 1982      | 1981      | Percent Change |
|------------------------|-----------|-----------|----------------|
| Number Reported        | 100       | 100       | —              |
| Unfounded              | 4         | 4         | —              |
| (% Unfounded)          | ( 4%)     | ( 4%)     | ( — )          |
| Actual                 | 96        | 96        | —              |
| Number Cleared         | 53        | 64        | – 17%          |
| (% Cleared)            | ( 55%)    | ( 67%)    | (– 18%)        |
| Justifiable Homicide   | 1         | 3         | – 67%          |
| Victims                |           |           |                |
| Male                   | 73        | 70        | + 4%           |
| Female                 | 23        | 26        | – 12%          |
| Origin of Victim       |           |           |                |
| White                  | 72        | 81        | – 11%          |
| Black                  | 20        | 13        | + 54%          |
| Indian                 | 4         | 2         | + 100%         |
| Average Age of Victim  | 33 yrs.   | 43 yrs.   | —              |
| Range of Age of Victim | 2–92 yrs. | 2–93 yrs. | —              |
| Type of Weapon Used    |           |           |                |
| Firearms, Unknown      | 9         | 11        | – 18%          |
| Handgun                | 42        | 40        | + 5%           |
| Knife                  | 20        | 13        | + 54%          |
| Hands/Feet             | 6         | 13        | – 54%          |
| Rifle                  | 2         | 1         | + 100%         |
| Blunt Object           | 6         | 5         | + 20%          |
| Strangulation          | 0         | 2         | – 100%         |
| Shotgun                | 5         | 8         | – 38%          |
| Asphyxiation           | 1         | 0         | + 100%         |
| Vehicle                | 1         | 0         | + 100%         |
| Hot Water              | 1         | 0         | + 100%         |
| Other Unknown          | 3         | 3         | —              |
| Total                  | 96        | 96        | —              |

**An Analysis of Crime Index Offenses  
1981-1982 (Continued)**

| Rape                        | 1982   | 1981   | Percent Change |
|-----------------------------|--------|--------|----------------|
| By Force                    |        |        |                |
| Number Reported             | 331    | 353    | - 6%           |
| Unfounded                   | 7      | 35     | - 80%          |
| (% Unfounded)               | ( 2%)  | ( 10%) | (- 80%)        |
| Actual                      | 324    | 318    | + 2%           |
| Attempted Rapes             |        |        |                |
| Number Reported             | 107    | 94     | + 14%          |
| Unfounded                   | 0      | 4      | -100%          |
| (% Unfounded)               | ( 0%)  | ( 4%)  | (-100%)        |
| Actual                      | 107    | 90     | + 19%          |
| Total All Rapes             |        |        |                |
| Number Reported             | 438    | 447    | - 2%           |
| Unfounded                   | 7      | 39     | - 82%          |
| (% Unfounded)               | ( 2%)  | ( 9%)  | (- 78%)        |
| Actual                      | 431    | 408    | + 6%           |
| Number Cleared              | 99     | 113    | - 12%          |
| (% Cleared)                 | ( 23%) | ( 28%) | (- 18%)        |
|                             |        |        |                |
| Robbery                     | 1982   | 1981   | Percent Change |
| Total Reported              | 2,461  | 2,778  | - 11%          |
| Unfounded                   | 59     | 82     | - 28%          |
| (% Unfounded)               | ( 2%)  | ( 3%)  | (- 33%)        |
| Actual                      | 2,402  | 2,696  | - 11%          |
| Number Cleared              | 619    | 563    | + 10%          |
| (% Cleared)                 | ( 26%) | ( 21%) | (+ 24%)        |
| Type of Weapon Used         |        |        |                |
| Firearm                     | 948    | 1,087  | - 13%          |
| Knife or Cutting Instrument | 249    | 273    | - 9%           |
| Other Dangerous Weapon      | 149    | 171    | - 13%          |
| Strong Arm                  | 1,056  | 1,165  | - 9%           |
| Total                       | 2,402  | 2,696  | - 11%          |
| Type of Location            |        |        |                |
| Highway                     | 992    | 1,035  | - 4%           |
| Commercial House            | 654    | 742    | - 12%          |
| Service Station             | 130    | 148    | - 12%          |
| Convenience Store           | 176    | 245    | - 28%          |
| Residence                   | 262    | 321    | - 18%          |
| Bank                        | 49     | 64     | - 23%          |
| Miscellaneous               | 139    | 141    | - 1%           |
| Total                       | 2,402  | 2,696  | - 11%          |

**An Analysis of Crime Index Offenses  
1981-1982 (Continued)**

| Aggravated Assault          | 1982     | 1981     | Percent Change |
|-----------------------------|----------|----------|----------------|
| Number Reported             | 2,554    | 3,218    | - 21%          |
| Unfounded                   | 51       | 99       | - 48%          |
| (% Unfounded)               | ( 2%)    | ( 3%)    | (- 33%)        |
| Actual                      | 2,503    | 3,119    | - 20%          |
| Number Cleared              | 1,120    | 1,684    | - 33%          |
| (% Cleared)                 | ( 45%)   | ( 54%)   | (- 17%)        |
| Type of Weapon              |          |          |                |
| Firearm                     | 759      | 1,041    | - 27%          |
| Knife or Cutting Instrument | 730      | 769      | - 5%           |
| Other Dangerous Weapon      | 832      | 1,047    | - 21%          |
| Hands, Fists, Feet, Etc.    | 233      | 262      | - 11%          |
| Total                       | 2,503    | 3,119    | - 20%          |
|                             |          |          |                |
| Burglary                    | 1982     | 1981     | Percent Change |
| Number Reported             | 21,713   | 23,243   | - 7%           |
| Unfounded                   | 231      | 191      | + 21%          |
| (% Unfounded)               | ( 1%)    | ( 1%)    | ( - )          |
| Actual                      | 21,482   | 23,052   | - 7%           |
| Number Cleared              | 2,156    | 2,513    | - 14%          |
| (% Cleared)                 | ( 10%)   | ( 11%)   | (- 9%)         |
| Type of Entry               |          |          |                |
| Forcible                    | 16,780   | 16,357   | + 3%           |
| No Force                    | 3,120    | 4,904    | - 36%          |
| Attempted Forcible Entry    | 1,582    | 1,791    | - 12%          |
| Total                       | 21,482   | 23,052   | - 7%           |
| Type of Location            |          |          |                |
| Residence                   |          |          |                |
| Night                       | 4,416    | 4,627    | 5%             |
| Day                         | 4,741    | 6,137    | - 23%          |
| Unknown Time                | 7,143    | 6,396    | + 12%          |
| (Sub-Total)                 | (16,300) | (17,160) | (- 5%)         |
| Non-Residence               |          |          |                |
| Night                       | 1,881    | 2,330    | - 19%          |
| Day                         | 301      | 306      | - 2%           |
| Unknown Time                | 3,000    | 3,266    | - 8%           |
| (Sub-Total)                 | (5,182)  | (5,892)  | (- 12%)        |
| Grand Total                 | 21,482   | 23,052   | - 7%           |

**An Analysis of Crime Index Offenses  
1981-1982 (Continued)**

| Larceny         | 1982   | 1981   | Percent Change |
|-----------------|--------|--------|----------------|
| Number Reported | 45,029 | 47,708 | - 6%           |
| Unfounded       | 682    | 731    | - 7%           |
| (% Unfounded)   | ( 2%)  | ( 2%)  | ( — )          |
| Actual          | 44,347 | 46,977 | - 6%           |
| Number Cleared  | 8,026  | 7,530  | + 7%           |
| (% Cleared)     | ( 18%) | ( 16%) | (+ 13%)        |
| Type of Theft   |        |        |                |
| From Persons    | 443    | 519    | - 15%          |
| Shoplifting     | 10,564 | 12,345 | - 14%          |
| Theft from Auto | 5,233  | 5,300  | - 1%           |
| Auto Parts      | 11,698 | 11,598 | + 1%           |
| Bicycles        | 5,368  | 5,773  | - 7%           |
| Buildings       | 5,571  | 5,804  | - 4%           |
| Coin Machines   | 366    | 326    | + 12%          |
| Miscellaneous   | 5,104  | 5,312  | - 4%           |
| Total           | 44,347 | 46,977 | - 6%           |

| Auto Theft  | 1982   | 1981   | Percent Change |
|---|--------|--------|----------------|
| Number Reported   | 4,815  | 5,259  | - 8%           |
| Unfounded   | 421    | 237    | + 78%          |
| (% Unfounded)   | ( 9%)  | ( 5%)  | (+ 80%)        |
| Actual  | 4,394  | 5,022  | - 13%          |
| Number Cleared  | 580    | 452    | + 28%          |
| (% Cleared)   | ( 13%) | ( 9%)  | (+ 44%)        |
| Type of Vehicle Theft   |        |        |                |
| Autos   | 2,225  | 2,589  | - 14%          |
| Trucks and Buses  | 1,021  | 1,356  | - 25%          |
| Other Vehicles  | 183    | 55     | + 233%         |
| Motorcycles   | 965    | 1,022  | - 6%           |
| Total   | 4,394  | 5,022  | - 13%          |
| Locally Stolen and Recovered By:                              |        |        |                |
| Phoenix Police  | 1,556  | 2,944  | - 47%          |
| Other Jurisdictions   | 389    | 548    | - 29%          |
| Total Recovered   | 1,945  | 3,492  | - 44%          |
| (% Recovered)   | ( 44%) | ( 70%) | (- 37%)        |
| Number Not Recovered  | 2,449  | 1,530  | + 60%          |
| Locally Recovered Vehicles Stolen<br>From Other Jurisdictions | 486    | 504    | - 4%           |

**An Analysis of Crime Index Offenses  
1981-1982 (Continued)**

| Arson           | 1982  | 1981   | Percent Change |
|-----------------|-------|--------|----------------|
| Number Reported | 527   | 513    | + 3%           |
| Unfounded       | 4     | 13     | - 69%          |
| (% Unfounded)   | ( 1%) | ( 3%)  | (- 67%)        |
| Actual          | 523   | 500    | + 5%           |
| Number Cleared  | 46    | 102    | - 55%          |
| (% Cleared)     | ( 9%) | ( 20%) | (- 55%)        |

**Type and Value of Property Stolen and Recovered 1981-1982**

| Type of Property   | Year | Value of Property Stolen | Value of Property Recovered | Percent of Value Recovered |
|--------------------|------|--------------------------|-----------------------------|----------------------------|
| Currency           | 1981 | 2,982,606                | 67,283                      | 2.3%                       |
|                    | 1982 | 2,621,353                | 47,906                      | 1.8%                       |
| Jewelry            | 1981 | 10,813,797               | 193,603                     | 1.8%                       |
|                    | 1982 | 7,877,450                | 216,470                     | 2.7%                       |
| Clothing, Furs     | 1981 | 669,598                  | 56,890                      | 8.5%                       |
|                    | 1982 | 772,791                  | 122,974                     | 15.9%                      |
| Vehicles           | 1981 | 16,580,929               | 10,758,938                  | 64.9%                      |
|                    | 1982 | 15,323,798               | 6,888,970                   | 45.0%                      |
| Office Equipment   | 1981 | 603,184                  | 44,150                      | 7.3%                       |
|                    | 1982 | 747,795                  | 38,168                      | 5.1%                       |
| Television, Radios | 1981 | 5,205,072                | 155,378                     | 3.0%                       |
|                    | 1982 | 5,823,983                | 229,278                     | 3.9%                       |
| Firearms           | 1981 | 817,642                  | 28,521                      | 3.5%                       |
|                    | 1982 | 999,842                  | 35,679                      | 3.6%                       |
| Household Items    | 1981 | 1,209,689                | 23,101                      | 1.9%                       |
|                    | 1982 | 1,134,386                | 34,706                      | 3.1%                       |
| Consumer           | 1981 | 567,343                  | 29,631                      | 5.2%                       |
|                    | 1982 | 352,224                  | 32,479                      | 9.2%                       |
| Livestock          | 1981 | 18,612                   | 2,840                       | 15.3%                      |
|                    | 1982 | 41,921                   | 20,655                      | 49.3%                      |
| Miscellaneous      | 1981 | 10,363,067               | 804,624                     | 7.8%                       |
|                    | 1982 | 10,238,591               | 848,057                     | 8.3%                       |
| TOTAL              | 1981 | 49,831,539               | 12,164,959                  | 24.4%                      |
|                    | 1982 | 45,934,134               | 8,515,342                   | 18.5%                      |

# **An Analysis of the Dollar Loss by Crime Index Offense 1981-1982**

| Robbery          | Year | Number of Offenses | Total Value | Percent Change | Average Value |
|------------------|------|--------------------|-------------|----------------|---------------|
| Highway, Street  | 1981 | 1,035              | 335,205     | - 15%          | 324           |
|                  | 1982 | 992                | 285,389     |                | 288           |
| Commercial House | 1981 | 724                | 420,899     | + 14%          | 567           |
|                  | 1982 | 654                | 481,143     |                | 736           |
| Service Station  | 1981 | 148                | 62,296      | - 17%          | 421           |
|                  | 1982 | 130                | 51,683      |                | 398           |
| Chain Store      | 1981 | 245                | 39,097      | + 26%          | 160           |
|                  | 1982 | 176                | 49,356      |                | 280           |
| Residence        | 1981 | 321                | 275,859     | + 79%          | 859           |
|                  | 1982 | 262                | 493,104     |                | 1,882         |
| Bank             | 1981 | 64                 | 567,918     | - 80%          | 8,874         |
|                  | 1982 | 49                 | 112,003     |                | 2,286         |
| Miscellaneous    | 1981 | 141                | 29,349      | + 352%         | 208           |
|                  | 1982 | 139                | 132,728     |                | 955           |
| TOTAL            | 1981 | 2,696              | 1,730,623   | - 7%           | 642           |
|                  | 1982 | 2,402              | 1,605,406   |                | 668           |

| Burglary            | Year | Number of Offenses | Total Value | Percent Change | Average Value |
|---------------------|------|--------------------|-------------|----------------|---------------|
| Residence Night     | 1981 | 4,627              | 3,772,449   | - 10%          | 815           |
|                     | 1982 | 4,416              | 3,376,770   |                | 765           |
| Day                 | 1981 | 6,137              | 5,899,356   | - 25%          | 961           |
|                     | 1982 | 4,741              | 4,434,973   |                | 935           |
| Unknown             | 1981 | 6,396              | 6,105,513   | - 1%           | 955           |
|                     | 1982 | 7,143              | 6,016,562   |                | 842           |
| Residence Total     | 1981 | 17,160             | 15,777,318  | - 12%          | 919           |
|                     | 1982 | 16,300             | 13,828,305  |                | 848           |
| Non-Residence Night | 1981 | 2,330              | 1,858,239   | - 23%          | 798           |
|                     | 1982 | 1,881              | 1,435,737   |                | 763           |
| Day                 | 1981 | 306                | 140,982     | + 16%          | 461           |
|                     | 1982 | 301                | 163,170     |                | 542           |
| Unknown             | 1981 | 3,256              | 2,579,073   | + 4%           | 792           |
|                     | 1982 | 3,000              | 2,674,207   |                | 891           |
| Non-Residence Total | 1981 | 5,892              | 4,578,294   | - 7%           | 777           |
|                     | 1982 | 5,182              | 4,273,114   |                | 825           |
| TOTAL               | 1981 | 23,052             | 20,355,612  | - 11%          | 883           |
|                     | 1982 | 21,482             | 18,101,419  |                | 843           |

# **An Analysis of the Dollar Loss by Crime Index Offense (Continued) 1981-1982**

| Larceny        | Year | Number of Offenses | Total Value | Percent Change | Average Value |
|----------------|------|--------------------|-------------|----------------|---------------|
| From Persons   | 1981 | 519                | 98,684      | - 27%          | 190           |
|                | 1982 | 443                | 71,968      |                | 162           |
| Shoplifting    | 1981 | 12,345             | 316,938     | - 10%          | 26            |
|                | 1982 | 10,564             | 285,965     |                | 27            |
| From Auto      | 1981 | 5,300              | 2,128,498   | + 12%          | 402           |
|                | 1982 | 5,233              | 2,384,516   |                | 456           |
| Vehicle Strip  | 1981 | 11,598             | 1,724,679   | + 11%          | 149           |
|                | 1982 | 11,698             | 1,910,789   |                | 163           |
| Bicycles       | 1981 | 5,773              | 628,209     | + 31%          | 109           |
|                | 1982 | 5,368              | 823,052     |                | 153           |
| Buildings      | 1981 | 5,804              | 2,891,443   | - 5%           | 498           |
|                | 1982 | 5,571              | 2,753,901   |                | 494           |
| Coin Machines  | 1981 | 326                | 19,867      | + 63%          | 61            |
|                | 1982 | 366                | 32,311      |                | 88            |
| Miscellaneous  | 1981 | 5,312              | 4,233,727   | - 28%          | 797           |
|                | 1982 | 5,104              | 3,064,710   |                | 600           |
| TOTAL          | 1981 | 46,977             | 12,042,045  | - 6%           | 256           |
|                | 1982 | 44,347             | 11,327,212  |                | 255           |
| \$200 and Over | 1981 | 11,081             | 10,218,293  | - 6%           | 922           |
|                | 1982 | 12,114             | 9,572,214   |                | 790           |
| \$50 to \$200  | 1981 | 14,736             | 1,451,533   | - 3%           | 99            |
|                | 1982 | 13,543             | 1,404,689   |                | 104           |
| Under \$50     | 1981 | 21,160             | 372,219     | - 6%           | 18            |
|                | 1982 | 18,690             | 350,309     |                | 19            |

| Auto Theft     | Year | Number of Offenses | Total Value | Percent Change | Average Value |
|----------------|------|--------------------|-------------|----------------|---------------|
| Total Vehicles | 1981 | 5,022              | 15,655,013  | - 6%           | 3,117         |
|                | 1982 | 4,394              | 14,725,270  |                | 3,351         |



**An Analysis of the Dollar Loss by Crime Index Offense (Continued)  
1981-1982**

| Arson                        | Year | Number of Offenses | Total Value | Percent Change | Average Value |
|------------------------------|------|--------------------|-------------|----------------|---------------|
| Single Occupancy Residential | 1981 | 97                 | 502,180     | + 178%         | 5,177         |
|                              | 1982 | 125                | 1,395,920   |                | 11,167        |
| Other Residential            | 1981 | 36                 | 169,110     | + 93%          | 4,698         |
|                              | 1982 | 53                 | 325,555     |                | 6,143         |
| Storage                      | 1981 | 20                 | 2,068,775   | - 98%          | 103,439       |
|                              | 1982 | 25                 | 38,534      |                | 1,541         |
| Industrial/Manufacturing     | 1981 | 11                 | 346,700     | - 63%          | 31,518        |
|                              | 1982 | 7                  | 128,250     |                | 18,321        |
| Other Commercial             | 1981 | 57                 | 2,491,210   | - 41%          | 43,705        |
|                              | 1982 | 39                 | 1,481,457   |                | 37,986        |
| Community/Public             | 1981 | 24                 | 1,117,755   | - 80%          | 46,573        |
|                              | 1982 | 23                 | 222,950     |                | 9,693         |
| All Other Structure          | 1981 | 5                  | 2,900       | + 222%         | 580           |
|                              | 1982 | 12                 | 9,325       |                | 777           |
| Motor Vehicles               | 1981 | 193                | 233,824     | + 36%          | 1,212         |
|                              | 1982 | 195                | 319,035     |                | 1,636         |
| Other Mobile Property        | 1981 | 9                  | 34,450      | + 14%          | 3,828         |
|                              | 1982 | 11                 | 39,220      |                | 3,565         |
| Other                        | 1981 | 48                 | 4,773       | + 3%           | 99            |
|                              | 1982 | 33                 | 4,900       |                | 148           |
| TOTAL                        | 1981 | 500                | 6,971,677   | - 43%          | 13,943        |
|                              | 1982 | 523                | 3,965,147   |                | 7,582         |

**An Analysis of Part II Offenses 1981-1982**

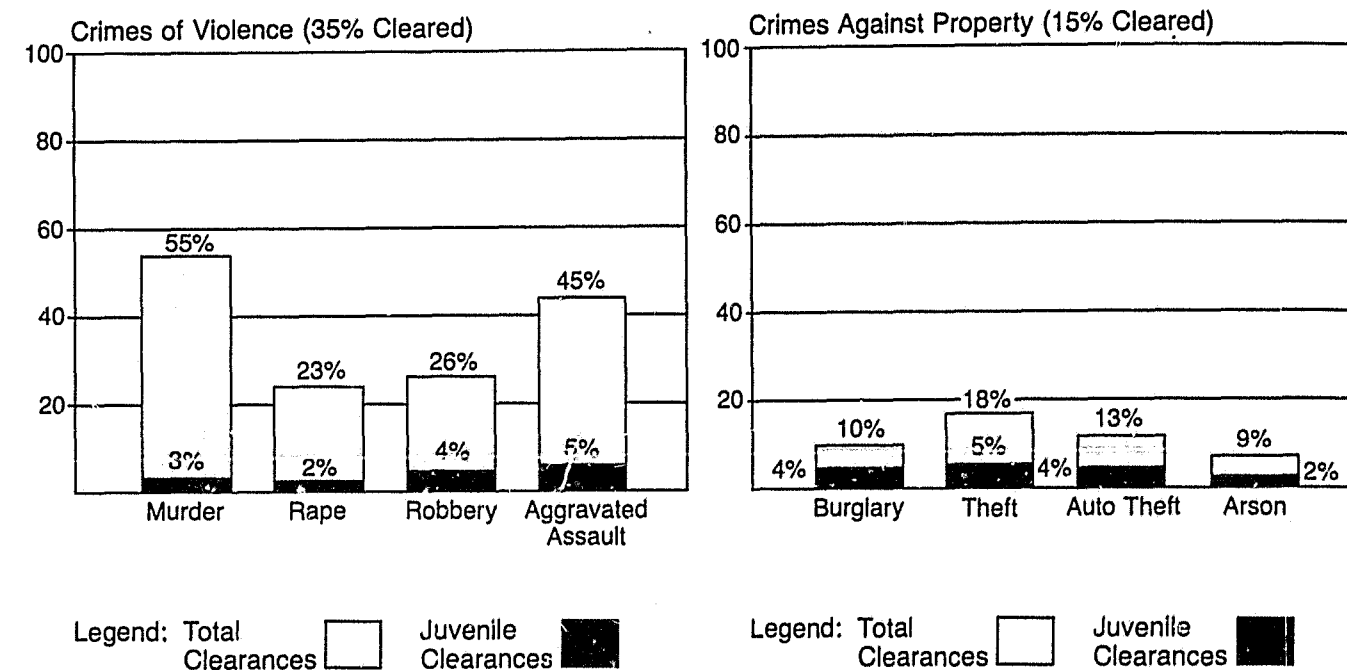
| Part II Offenses                   | 1982   | 1981   | Percent Change |
|------------------------------------|--------|--------|----------------|
| Other Assaults                     | 3,895  | 3,665  | + 6%           |
| Forgery                            | 919    | 790    | + 16%          |
| Fraud                              | 1,349  | 1,747  | - 23%          |
| Embezzlement                       | 675    | 805    | - 16%          |
| Stolen Property                    | 547    | 224    | + 144%         |
| Vandalism                          | 12,115 | 13,877 | - 13%          |
| Weapons                            | 624    | 677    | - 8%           |
| Prostitution & Commercialized Vice | 933    | 1,341  | - 30%          |
| Sex Offenses                       | 1,517  | 1,649  | - 8%           |
| Narcotics                          |        |        |                |
| Opium                              | 299    | 235    | + 27%          |
| Marijuana                          | 3,015  | 3,588  | - 16%          |
| Synthetics                         | 32     | 18     | + 78%          |
| Other                              | 234    | 259    | - 10%          |
| Gambling                           |        |        |                |
| Bookmaking                         | 0      | 0      | —              |
| Numbers                            | 0      | 1      | - 100%         |
| Other                              | 17     | 27     | - 37%          |
| Offenses Against Family & Children | 192    | 251    | - 24%          |
| DWI                                | 327    | 260    | + 26%          |
| Liquor Law                         | 3,186  | 3,158  | + 1%           |
| Drunkenness                        | 291    | 99     | + 194%         |
| Disorderly Conduct                 | 4,431  | 4,541  | - 2%           |
| Vagrancy                           | 6      | 19     | - 68%          |
| Other (Except Traffic)             | 5,969  | 4,723  | + 26%          |
| All Traffic                        | 3,822  | 4,358  | - 12%          |
| Curfew                             | 74     | 163    | - 55%          |
| Runaways                           | 2,446  | 2,807  | - 13%          |
| TOTAL                              | 46,915 | 49,282 | - 5%           |

**Adult and Juvenile Arrests 1981-1982**

|                          | Part I Crimes* |        |                | Part II Crimes |        |                | Part I & II Crimes |        |                |
|--------------------------|----------------|--------|----------------|----------------|--------|----------------|--------------------|--------|----------------|
|                          | 1982           | 1981   | Percent Change | 1982           | 1981   | Percent Change | 1982               | 1981   | Percent Change |
| Total Adult and Juvenile | 14,664         | 13,282 | + 10%          | 31,321         | 29,702 | + 5%           | 45,985             | 42,984 | + 7%           |
| Male                     | 11,538         | 10,324 | + 12%          | 26,464         | 25,202 | + 5%           | 38,002             | 35,526 | + 7%           |
| Female                   | 3,126          | 2,958  | + 6%           | 4,857          | 4,500  | + 8%           | 7,983              | 7,458  | + 7%           |
| Adult Total              | 9,750          | 8,221  | + 19%          | 27,964         | 26,949 | + 4%           | 37,714             | 35,170 | + 7%           |
| Male                     | 7,738          | 6,528  | + 19%          | 23,866         | 22,952 | + 4%           | 31,604             | 29,480 | + 7%           |
| Female                   | 2,012          | 1,693  | + 19%          | 4,098          | 3,997  | + 3%           | 6,110              | 5,690  | + 7%           |
| Juvenile Total           | 4,914          | 5,061  | - 3%           | 3,357          | 2,753  | + 22%          | 8,271              | 7,814  | + 6%           |
| Male                     | 3,800          | 3,796  | —              | 2,598          | 2,250  | + 15%          | 6,398              | 6,046  | + 6%           |
| Female                   | 1,114          | 1,265  | - 12%          | 759            | 503    | + 51%          | 1,873              | 1,768  | + 6%           |

\* Part I Crimes for 1981 include Arson.

### Index Crimes Cleared by Arrest 1982



### Percent Change in Selected Traffic Statistics 1981-1982

| Traffic Statistics                             | 1982    | 1981    | Percent Change |
|--|---------|---------|----------------|
| Fatal Accidents                                | 89      | 168     | - 47%          |
| Fatalities                                     | 94      | 187     | - 50%          |
| Alcohol (or Drugs) Involved In Fatal Accidents | 56      | 79      | - 29%          |
| (Percentage)                                   | (63%)   | (47%)   | (+ 34%)        |
| DWI Drivers Involved in Accidents              | 2,173   | 2,763   | - 21%          |
| Percentage of Accidents Involving DWI Drivers  | 9.3%    | 11.2%   | - 17%          |
| Drivers Charged With DWI                       | 10,731  | 11,857  | - 9%           |
| Citations Issued                               | 304,054 | 291,429 | + 4%           |
| Total Accidents                                | 23,173  | 24,587  | - 6%           |

### Narcotic Seizures 1981-1982

| Type of Narcotic         | MINIMUM STREET VALUE |             |                |
|--------------------------|----------------------|-------------|----------------|
|                          | 1982                 | 1981        | Percent Change |
| Narcotic Drugs           |                      |             |                |
| A. Heroin                | \$1,343,015          | \$ 108,371  | + 1,139%       |
| B. Cocaine               | 350,749              | 189,251     | + 85%          |
| C. Other Narcotic Drugs  | 190,615              | 29,094      | + 555%         |
| Dangerous Drugs          |                      |             |                |
| A. Stimulants            | \$ 10,867            | \$ 29,395   | - 63%          |
| B. Depressants           | 29,653               | 27,684      | + 7%           |
| C. Hallucinogens         | 12,805               | 9,463       | + 35%          |
| D. Peyote                | 94                   | 305         | - 69%          |
| E. P.C.P.                | 15,036               | 7,291       | + 106%         |
| F. Other Dangerous Drugs | 101                  | 772         | - 87%          |
| Marijuana                |                      |             |                |
| A. Marijuana             | \$ 746,087           | \$ 739,618  | + 1%           |
| B. Hashish               | 14,022               | 5,117       | + 174%         |
| Total Street Value       | \$2,713,044          | \$1,146,361 | + 137%         |

### An Analysis of Assaults on Phoenix Police Officers

| Classification           | 1982   |              | 1981   |              | Percent Change |
|--------------------------|--------|--------------|--------|--------------|----------------|
|                          | Number | (% of Total) | Number | (% of Total) |                |
| Total Assaults by Weapon | 261    | (100%)       | 339    | (100%)       | - 23%          |
| Firearm                  | 20     | ( 8%)        | 16     | ( 5%)        | + 25%          |
| Knife, Etc.              | 5      | ( 2%)        | 10     | ( 3%)        | - 50%          |
| Other Dangerous Weapon   | 28     | ( 10%)       | 36     | ( 10%)       | - 22%          |
| Hands, Fists, Feet       | 208    | ( 80%)       | 277    | ( 82%)       | - 25%          |
| Type of Assignment       |        |              |        |              |                |
| Two-Man Unit             | 124    | ( 48%)       | 152    | ( 45%)       | - 18%          |
| One-Man Unit             |        |              |        |              |                |
| Alone                    | 37     | ( 14%)       | 54     | ( 16%)       | - 31%          |
| Assisted*                | 70     | ( 27%)       | 109    | ( 32%)       | - 36%          |
| Detective/Spl. Assign.   |        |              |        |              |                |
| Alone                    | 2      | ( 1%)        | 2      | ( 1%)        | -              |
| Assisted*                | 7      | ( 3%)        | 6      | ( 2%)        | + 17%          |
| Other                    |        |              |        |              |                |
| Alone                    | 6      | ( 2%)        | 4      | ( 1%)        | + 50%          |
| Assisted*                | 15     | ( 6%)        | 12     | ( 3%)        | + 25%          |
| Police Assaults Cleared  | 256    | ( 98%)       | 325    | ( 96%)       | - 21%          |
| Number With Injury       | 66     | ( 25%)       | 107    | ( 32%)       | - 38%          |
| Number Without Injury    | 195    | ( 75%)       | 232    | ( 68%)       | - 16%          |

\* Assisted: When an officer was assisted by a back-up unit and the assault was made on either or both officers.

**An Analysis of Assaults on Police Officers By Time of Day  
1981-1982**

| Time      | 1982   |              | 1981   |              | Percent Change |
|-----------|--------|--------------|--------|--------------|----------------|
|           | Number | (% of Total) | Number | (% of Total) |                |
| 0000-0200 | 57     | (22 %)       | 66     | ( 19%)       | - 14%          |
| 0200-0400 | 32     | (12.3%)      | 38     | ( 11%)       | - 16%          |
| 0400-0600 | 8      | ( 3 %)       | 16     | ( 5%)        | - 50%          |
| 0600-0800 | 3      | ( 1 %)       | 6      | ( 2%)        | - 50%          |
| 0800-1000 | 11     | ( 4 %)       | 5      | ( 1%)        | +120%          |
| 1000-1200 | 6      | ( 2.3%)      | 7      | ( 2%)        | - 14%          |
| 1200-1400 | 10     | ( 4 %)       | 3      | ( 1%)        | +233%          |
| 1400-1600 | 8      | ( 3 %)       | 12     | ( 4%)        | - 33%          |
| 1600-1800 | 16     | ( 6 %)       | 14     | ( 4%)        | + 14%          |
| 1800-2000 | 34     | (13 %)       | 43     | (13%)        | - 21%          |
| 2000-2200 | 27     | (10.3%)      | 53     | (16%)        | - 49%          |
| 2200-2400 | 49     | (19 %)       | 76     | (22%)        | - 36%          |
| TOTAL     | 261    | (99.9%)      | 339    | (100%)       | - 23%          |

**Assaults on Police Officers By Type of Activity  
1981-1982**

| Type of Activity                     | 1982 | 1981 | Percent Change |
|--------------------------------------|------|------|----------------|
| Responding to Disturbance Calls      | 87   | 102  | - 15%          |
| Burglaries in Progress — or Pursuits | 2    | 2    | —              |
| Robberies in Progress — or Pursuits  | 6    | 4    | + 50%          |
| Attempting other Arrests             | 39   | 42   | - 7%           |
| Civil Disorder                       | 2    | -0-  | +200%          |
| Handling, Transporting Prisoners     | 36   | 55   | - 35%          |
| Investigating Suspicious Persons     | 47   | 60   | - 22%          |
| Ambush                               | 4    | 9    | - 56%          |
| Mentally Deranged                    | 1    | 3    | - 67%          |
| Traffic Pursuits                     | 16   | 48   | - 67%          |
| All Other                            | 21   | 14   | + 50%          |
| TOTAL                                | 261  | 339  | - 23%          |

**END**