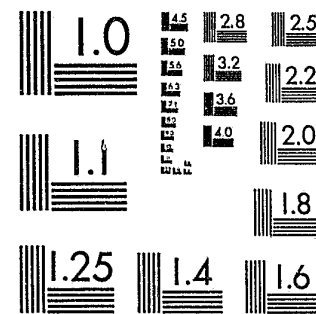


National Criminal Justice Reference Service

ncjrs

This microfiche was produced from documents received for inclusion in the NCJRS data base. Since NCJRS cannot exercise control over the physical condition of the documents submitted, the individual frame quality will vary. The resolution chart on this frame may be used to evaluate the document quality.



MICROCOPY RESOLUTION TEST CHART
NATIONAL BUREAU OF STANDARDS-1963-A

Microfilming procedures used to create this fiche comply with the standards set forth in 41CFR 101-11.504.

Points of view or opinions stated in this document are those of the author(s) and do not represent the official position or policies of the U. S. Department of Justice.

National Institute of Justice
United States Department of Justice
Washington, D. C. 20531

12/03/84

94476

94476

INTRODUCTION

This report deals with the violent crime of forcible rape as defined by the FBI's Uniform Crime Report (UCR). The UCR definition of rape applies only to sexual assaults perpetrated against females. Based on this definition, sexual assaults on men and boys are not included in this report.*

For perspective, excerpts from the Bureau of Justice Statistics Special Reports on criminal victimizations will be cited. These victimization surveys were conducted by the National Crime Survey (NCS) based on a random sample of approximately 60,000 households across the country.

The NCS data are obtained from interviews with persons in the representative sample. They contain crimes against individuals (households) whether reported to the police or not. UCR data is solely reported data. The NCS calculates police reporting rates by dividing the number of victimizations that victims reported to police by the total number of victimizations for a crime classification.

Relevant to this report, NCS deals with forcible rapes of persons twelve and over. UCR counts all reported forcible rapes of females, regardless of age.

U.S. Department of Justice National Institute of Justice

This document has been reproduced exactly as received from the person or organization originating it. Points of view or opinions stated in this document are those of the authors and do not necessarily represent the official position or policies of the National Institute of Justice.

Every effort has been made to reproduce this copyrighted material as faithfully as possible.

Alabama Criminal Justice Information
Center

is the National Criminal Justice Reference Service (NCJRS).

Reproduction outside of the NCJRS system requires permission of the copyright owner.

* "Sexual attacks on males will either be classified as assaults or 'other sex offenses' depending on the nature of the crime and the extent of injury". (Uniform Crime Reporting Handbook, U.S. Department of Justice, Federal Bureau of Investigation, U.S. Printing Office 1980 0-317-046.)

General Information

The FBI's Uniform Crime definition of rape is the carnal knowledge of a female forcibly and against her will. Rape is classified as a violent crime due to the high risk of injury or even death to the victim. (Over the past five years, 1979 - 1983, there have been 13 homicides, in Alabama, in which an attempted or forcible rape was involved).

The National Crime Survey (NCS) calculates that 2 in every 1,000 women are victimized by rape each year. This ratio has not changed significantly since 1973. Based on NCS victimization studies, it is estimated that only 50% of all these rapes are reported to the police. Fear of retaliation by the raper, age of the victim, fear of police and/or the criminal justice process, reaction of family and friends can be cited as a few of the factors effecting rape reporting practices.

The rapes cited in this publication were reported by Alabama's law enforcement agencies to the State's UCR program. Rapes which occurred but were not reported to the police and reported rapes that later proved to be false complaints are excluded from this report.

OFFENSE AND CLEARANCE DATA*

There were 920 reported rapes in Alabama in 1983. Of this total, 192 or 21% were attempts.** This percentage has remained fairly constant over the past five years.

YEAR	% ATTEMPTS
1979	22%
1980	20%
1981	20%
1982	20%
1983	21%

Eighty-one percent of the rapes involved a single victim - single offender; 18% involved a single victim - multiple offenders.

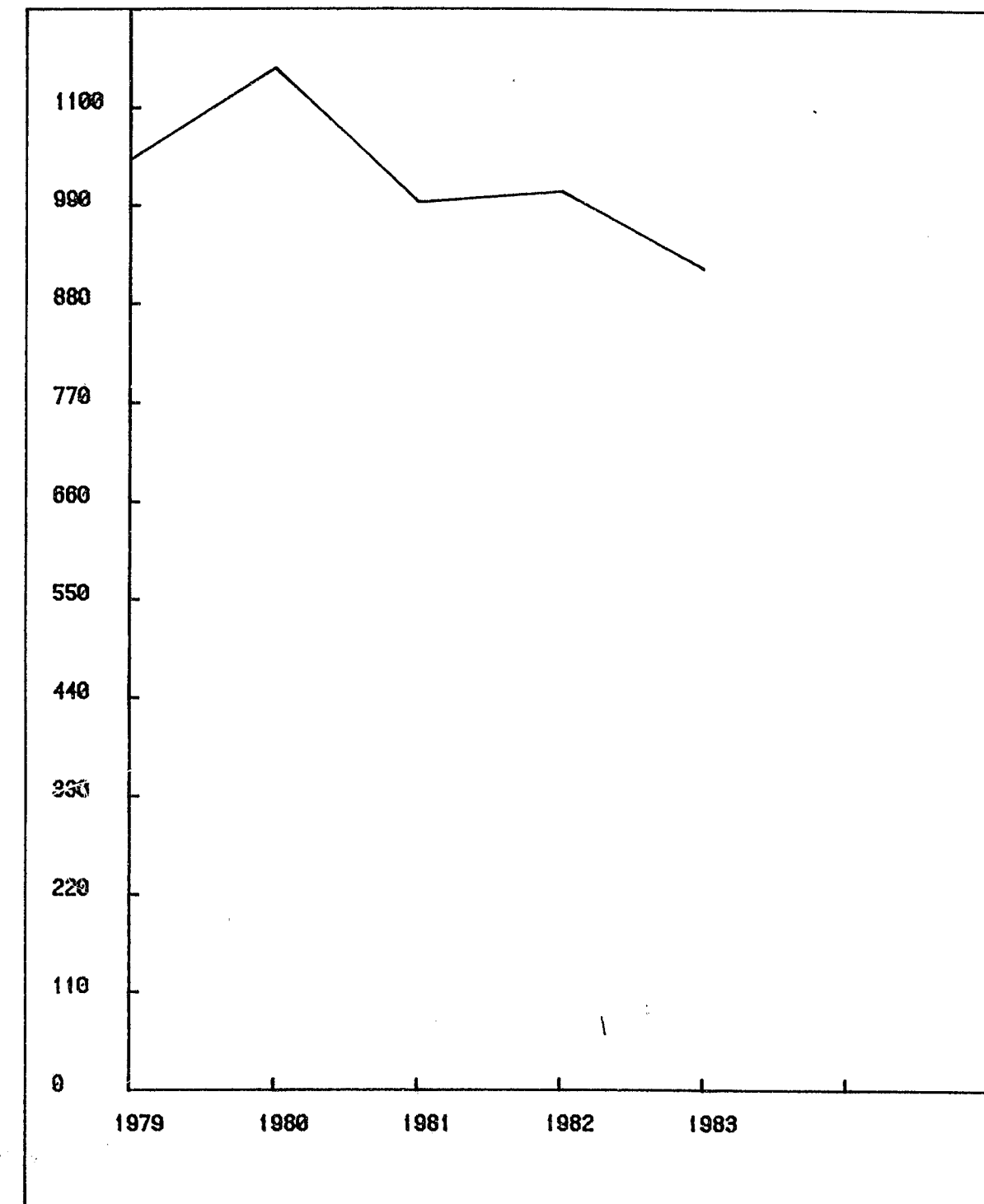
SITUATION	NUMBER	PERCENT
Single Victim/Single Offenders	744	81%
Single Victim/Multiple Offenders	161	18%
Multiple Victims/Single Offender	10	1%
Multiple Victims/Multiple Offenders	2	-

* Offense and clearance data are obtained from the UCR Return A report forms.

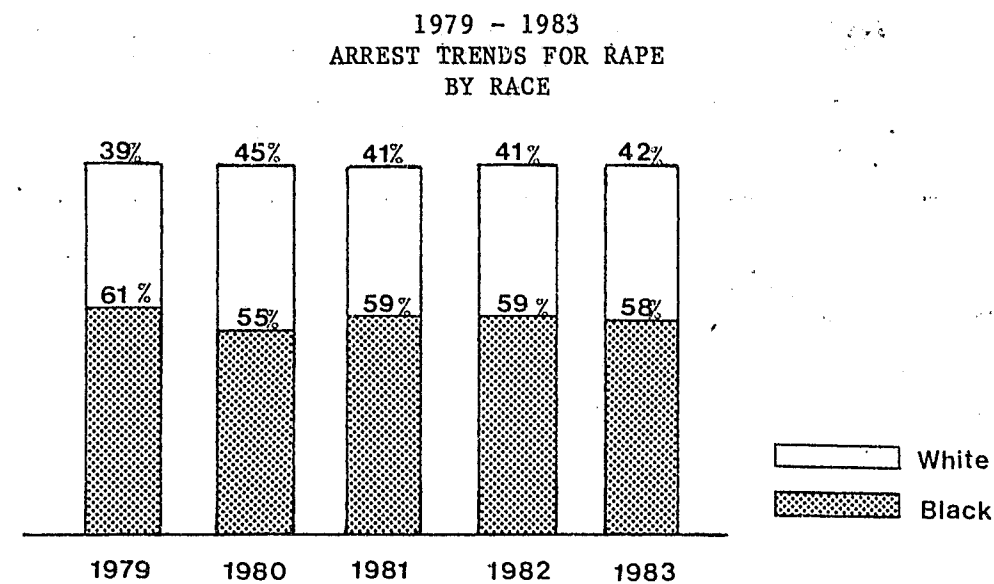
**The FBI counts attempted forcible rape as a forcible rape for statistical purposes. Unless otherwise noted, the rape totals in this report will also combine actual and attempted forcible rapes.

RAPE 1979-1983 ALABAMA

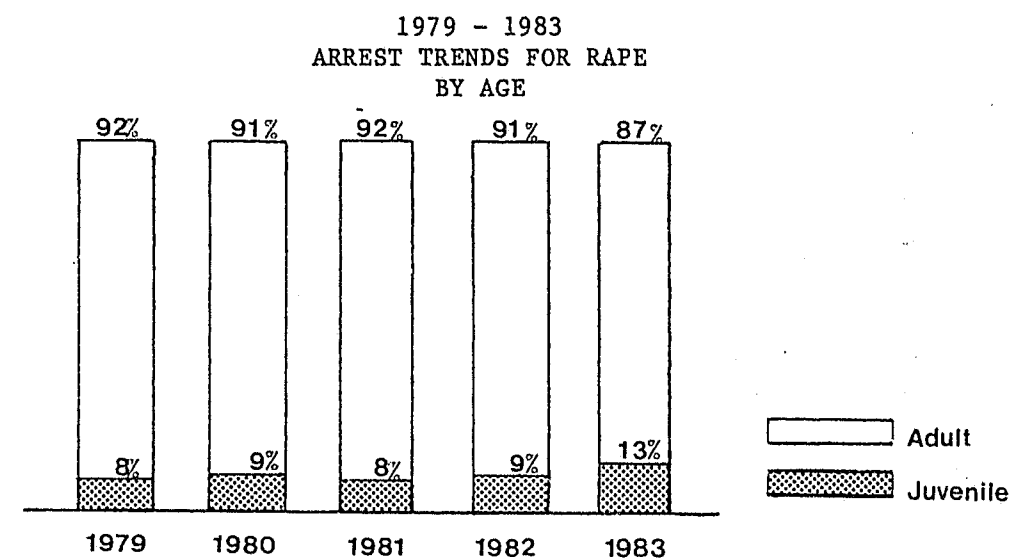
OFFENSE	1979	1980	1981	1982	1983
RAPE	1042.0	1144.0	994.0	1006.0	920.0



There were 437 males arrested in Alabama in 1983 for forcible rape. Of those arrested, 42% were white males and 58% black males. The following chart gives arrest trends for rape by race.



There were 55 juveniles arrested for forcible rape making up 13% of those arrested. Juvenile arrest trends for rape show a slight increase for 1983 over the past 5 years.



Of the 920 rapes reported, 534 were cleared for a 60% clearance rate. The following table gives offense and clearance data for a five year period.

RAPE OFFENSE AND CLEARANCE DATA 1979 - 1983			
YEAR	OFFENSE	CLEARANCE	CLEARANCE RATE
1979	1042	565	54%
1980	1144	561	49%
1981	994	541	54%
1982	1006	595	59%
1983	920	534	60%
AVERAGE	1021.2	559.2	55%

OFFENDER DATA*

The average age of the rape offender was 26.3 years with a range from 9 to 70 years. Eleven percent of the offenders were identified as juveniles. Eighty-two percent of the offenders were 40 or under. In twelve percent, the offenders age was unknown. Offender data are given to the police departments by the victim and include single and multiple offenders. These offenders may or may not have been arrested.

The following table gives a breakdown by age. The age classifications used here correspond to those used by the FBI in their ASR forms.

1983 RAPE DATA OFFENDERS BY AGE		
AGE OF OFFENDER	NUMBER OF OFFENDERS	% OF TOTAL
Unknown	134	12%
Under 18	119	11%
18	46	4%
19	40	4%
20	106	10%
21	33	3%
22	37	3%
23	37	3%
24	37	3%
25-29	209	20%
30-34	147	14%

* Offender data are obtained from the Supplemental Rape Report (SRR).

RAPE DATA - OFFENDERS BY AGE (cont.)

AGE OF OFFENDER	NUMBER OF OFFENDERS	% OF TOTAL
35-39	61	6%
40-44	39	4%
45-49	18	2%
50-54	13	1%
55-59	1	-
60-64	3	-
65 over	2	-

Over two-thirds of the offenders were black males; 30% were white males; and, 3% were unknown.*

1983
RAPE DATA
RAPE OFFENDERS BY RACE

RACE	NUMBER OF OFFENDERS	% OF TOTAL
White	319	30%
Black	737	67%
Unknown	26	3%

VICTIM DATA

The average age of the rape victim in Alabama in 1983 was 23.7 years with a range from 2 to 99 years. Twenty-six percent of the victims were 16 or under. Of the victims 16 and under, 22% of the offenders were relatives, 54% were acquaintances, 15% were strangers and in 9% the relationship was unknown.

There were ten pre-schoolers reported as rape victims in 1983, 6 were raped by acquaintances and 4 by relatives. The offenders ranged in age from 9 to 28. Fifty percent of the offenders were between 9 and 16.

There were 18 rape victims who were primary school age (6 - 8 years). Eight were raped by relatives, 9 were raped by acquaintances and one by a stranger. The offenders ranged in age from 12 to 48 with one-third of the offenders being juveniles (under 18).

* Includes offenders involved in single and multiple offender rapes.

The incidence of rape begins to decrease around 36 and then around 47 the incidence decreased even more (women 47 and older make up 5% of the total rape victims in Alabama). Some reasons given for this decrease include:

1. Older women are more hesitant about reporting rape than younger women.
2. Older women are more aware and more frightened by rape than younger women.
3. Older women take more precautions to protect themselves against rape.

Forty-six percent of the victims in Alabama were white females and 54% were black females. The following table gives a breakdown by race for victim and offender.

1983
RAPE DATA
VICTIM/OFFENDER BREAKDOWN BY RACE

VICTIM	OFFENDER			TOTAL % BY VICTIM
	UNKNOWN OFFENDER	WHITE MALE	BLACK MALE	
Unknown Female	0	0	2	2 -
White Female	16	273	130	419 46%
Black Female	10	9	480	499 54%
Total by offender	26	282	612	920 100%
% by offender	3%	30%	67%	

The following table gives a breakdown by race and relationship.

1983
RAPE DATA
VICTIM/OFFENDER BREAKDOWN BY RELATIONSHIP *

RELATIONSHIP	W/W	W/B	W/U	B/W	B/B	B/U	U/B
Known	175	22	2	2	287	1	0
Stranger	69	87	9	4	139	3	0
NA	29	21	5	3	54	6	2
TOTAL	273	130	16	9	480	10	2

* NOTE: The relationship is victim to offender. The "NA" category involves cases where relationship was unknown or not stated in the SRR form. The headings are divided by race (w-white, b-black, u-unknown) in the order victim/offender.

In over 50% of the rapes in Alabama in 1983, the victim and the offender knew each other. The following table gives a breakdown by relationship.

1983
RAPE DATA
RELATIONSHIP OF VICTIM TO OFFENDER

RELATIONSHIP	NUMBER	% OF TOTAL
Relative	80	9%
Acquaintance	409	44%
Stranger	310	34%
Relationship Unknown	121	13%
TOTAL	920	100%

Of the 920 rape victims in Alabama, 535 (58%) were examined for rape by a doctor.

1983
RAPE DATA
MEDICAL EXAMINATION

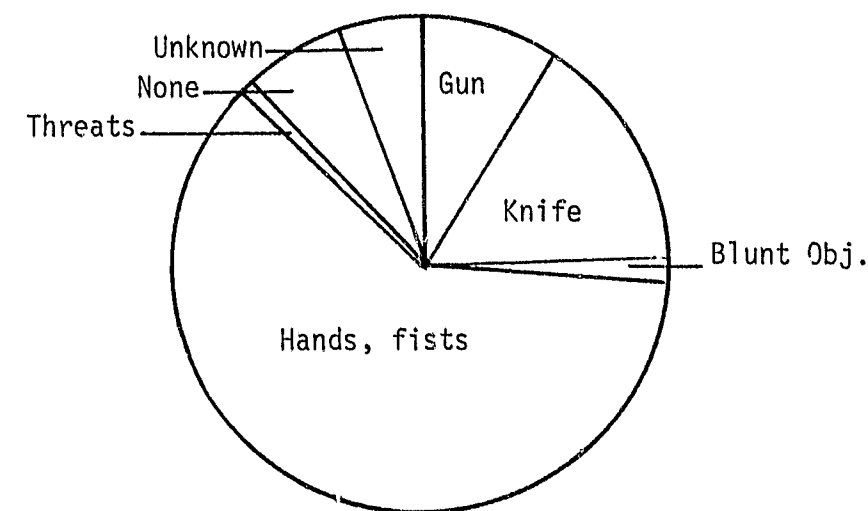
OFFENSE	MEDICAL EXAM		
	YES	NO	UNKNOWN
Attempted Rape	37	154	4
Rape	498	188	39
TOTAL	535	342	43
%	58%	37%	5%

There were 150 (16%) victims who sustained physical injuries as a result of rape. Of these 150 victims, 42% knew or were related to their offender(s).

1983
RAPE DATA
VICTIMS RECEIVING PHYSICAL INJURIES

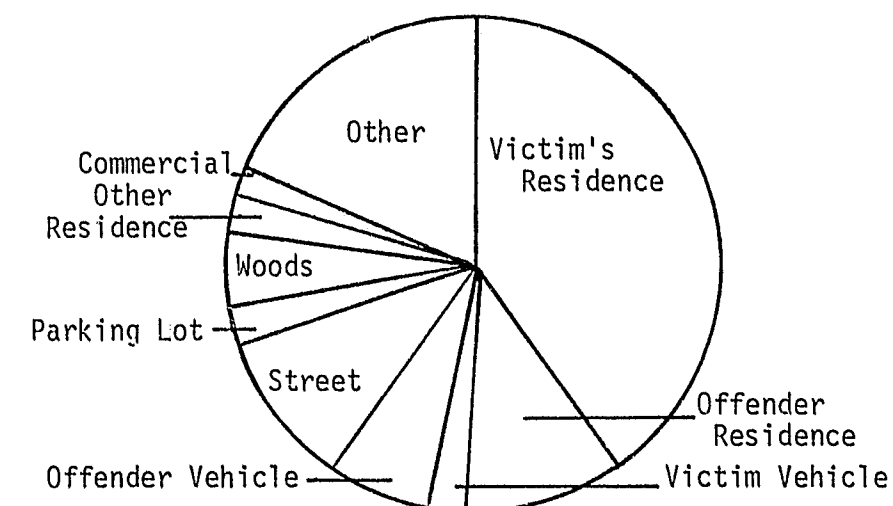
RELATIONSHIP	NUMBER	%
Acquaintance	53	35%
Relative	11	7%
Stranger	61	41%
Relationship Unknown	25	17%
TOTAL	150	100%

RAPE DATA



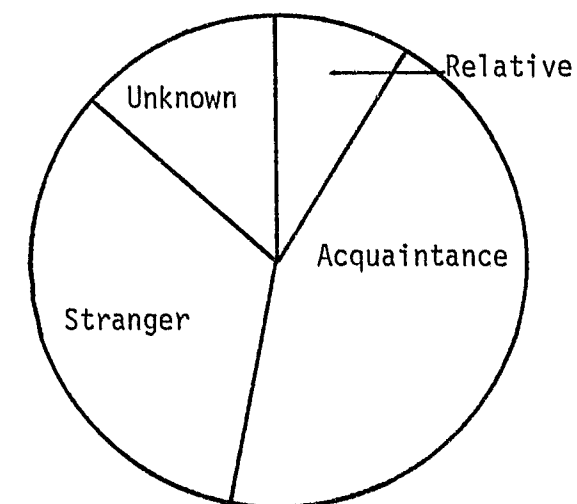
WEAPON

Gun	85
Knife	139
Blunt Obj.	22
Hands, fists	583
Threats	9
None	58
Unknown	24



LOCATION

Victim Residence	366
Offender Residence	98
Victim Vehicle	24
Offender Vehicle	73
Street/Alley	101
Parking Lot	23
Wooded Area	49
Other Residence	25
Commercial	15
Other	146



RELATIONSHIP TO VICTIM

Relative*	80
Acquaintance	409
Stranger	310
Unknown	121

*Relative includes those related by blood or legal ties.

WEAPON

In 64% of the incidents, hands and fists and/or verbal threats were used to exert force upon a victim. The following table gives a breakdown by weapon.

1983
RAPE DATA
WEAPON USED

WEAPON	NUMBER	% OF TOTAL
Gun	85	9%
Knife/Sharp inst.	139	16%
Blunt instrument	22	2%
Hands & fists	583	63%
Verbal threats	9	1%
None	58	6%
Unknown	24	3%
TOTAL	920	100%

Strangers accounted for 55% of the rapes in which a gun or a knife was used. The following table gives a breakdown by weapon type and relationship of victim to offender.

1983
RAPE DATA
WEAPON TYPE BY RELATIONSHIP

RELATIONSHIP	GUN	KNIFE/ SHARP INST.	BLUNT INST.	FISTS	VERBAL THREATS	NONE	UNK
Relative	1	2	2	59	4	13	3
Acquaintance	20	43	9	300	1	24	9
Stranger	53	70	8	159	3	10	7
Unknown	11	24	3	65	1	11	5
TOTAL	85	139	22	583	9	58	24

Fifty-seven percent of the physical injuries incurred resulted from hands and fists; 24% of the victims were injured by knives. The following gives a breakdown by injury and weapon.

1983
RAPE DATA
INJURY BY WEAPON

PHYSICAL INJURY	GUN	KNIFE SHARP INST.	BLUNT INST.	FISTS	VERBAL THREAT	NONE	UNKNOWN
Yes	13	37	4	86	2	4	4
No	67	97	17	471	7	48	16
Unknown	5	5	1	26	0	6	4
TOTAL	85	139	22	583	9	58	24

LOCATION

Forty percent of the rapes occurred in the victim's residence and 10% in the offender's residence. The following table gives a breakdown by location.

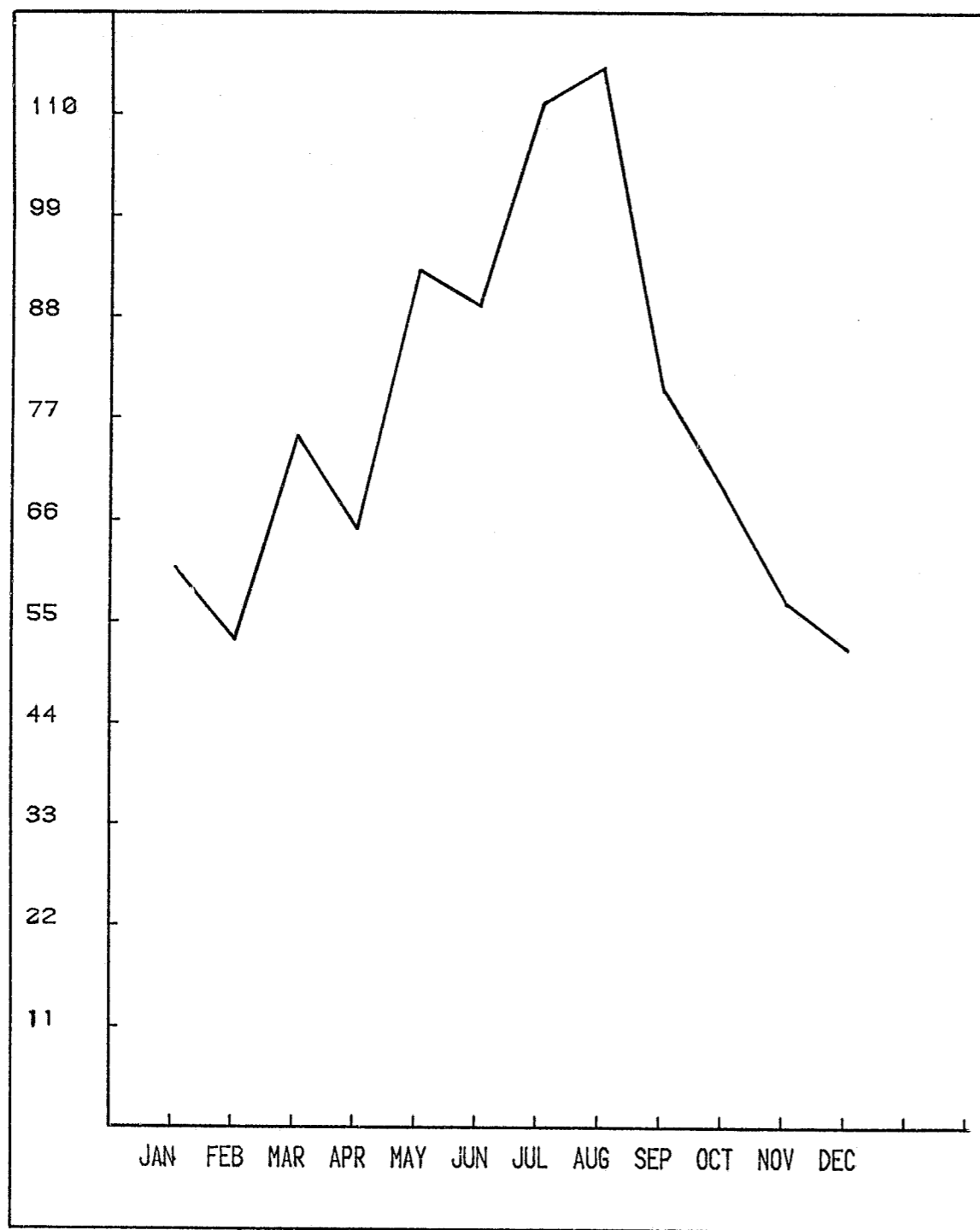
1983
RAPE DATA
LOCATION OF RAPE

LOCATION	NUMBER	% OF TOTAL
Victim's Residence	366	40%
Offender's Residence	98	10%
Victim's Car	24	3%
Offender's Car	73	7%
Street/Alley	101	11%
Parking lot	23	3%
Wooded area	49	5%
Commercial	15	2%
School	15	2%
Vacant lot	11	1%
Vacant house	48	5%
Other residence	25	3%
Dirt road	17	2%
Motel	10	1%
Park/Recreation	23	3%
Other	17	2%
Unknown	5	-
TOTAL	920	100%

MONTHLY TREND FOR RAPE

1983

JAN	61	APR	85	JUL	111	OCT	89
FEB	53	MAY	93	AUG	115	NOV	57
MAR	75	JUN	89	SEP	80	DEC	52



TIME

Seventy-one percent of the reported rapes in Alabama occurred between 6 p.m. and 6 a.m. Twenty-seven percent occurred from 6 a.m. to 6 p.m. One percent occurred at unknown times.

DAY OF THE WEEK

Saturday was the day of the week with the greatest number of rapes, 183, and Monday had the fewest, with 98. The following table gives the number of rapes reported by the day of the week.

1983
RAPE DATA
DAY OF THE WEEK

DAY	NUMBER OF RAPES	% OF TOTAL
Sunday	134	15%
Monday	98	11%
Tuesday	114	12%
Wednesday	125	14%
Thursday	102	11%
Friday	151	16%
Saturday	183	20%
Unknown	13	1%
TOTAL	920	100%

SUMMARY: Rape in Alabama

- 920 rapes were reported in Alabama in 1983.
- August was the month with the greatest number of rapes, 115.
- December was the month with the fewest number of rapes, 52.
- Saturday was the day of the week with the greatest number of reported rapes, 183, for 20%.
- 71% of the rapes occurred at night.
- 534 rapes were cleared for a 60% clearance rate.
- 437 males were arrested for rape. 42% were white and 58%, black. 13% were juveniles.
- 26.3 was the average age of the known offenders with a range from 9 to 70 years.
- 23.7 was the average age of the victim with a range from 2 to 99 years.
- 28% of the victims were 16 or under with 13% being 13 or under. 5% of the victims were over 50.
- 46% of the victims were white females and 54% were black females.
- In 53% of the rapes the victim knew the offender (9% were related); in 34%, the offender was a stranger; and, in 13% the relationship is unknown or not listed.
- 63% of the rapes involved hands and fists; other weapons used include: knives, 14%, firearms, 9% and other weapons, 9%.
- 40% of the rapes occurred in the victim's residence and 10%, in the offender's residence. Streets, alleys, and parking lots accounted for 14%. Wooded areas, 5%. Schools, parks, churches and public buildings, 6%.

APPENDIX

This appendix contains a copy of the Supplementary Rape Report. This form is provided by AGJIC to all law enforcement agencies in Alabama reporting to UCR.

SUPPLEMENTARY RAPE REPORT

(FOR ATTEMPTED AND FORCIBLE RAPE ONLY)

(See Reve

[illegible]

*Offense Code R - Actual Rape A - Attempted Rape

****Situation Code** A - Single victim/Single offender C - Multiple victims/single offender
 B - Single victim/Multiple offenders D - Multiple victims/Multiple offenders

Month and Year of Report

Agency Name

Agency Identifier

REFERENCES

1979-80 Changes, 1973-80 Trends - Criminal Victimization in the U.S., Bureau of Justice Statistics Technical Report, U.S. Department of Justice, July, 1982. (written by Adolfo L. Paez and Richard W. Dodge, U.S. Bureau of the Census)

1973-82 Trends - Criminal Victimization in the United States, Bureau of Justice Statistics Technical Report. U.S. Department of Justice, September, 1983. (written by Al Paez and Fred Shenk, U.S. Bureau of the Census)

Households Touched by Crime 1981, Bureau of Justice Statistics Bulletin, U.S. Department of Justice, September, 1982. (principal author - Michael R. Rand)

Victims of Crime, Bureau of Justice Statistics, U.S. Department of Justice, November 1981. (principal author - Patsy Klaus)

Uniform Crime Reporting Handbook, U.S. Department of Justice, Federal Bureau of Investigation. U.S. Government Printing Office: 1980 O-317-046.

END