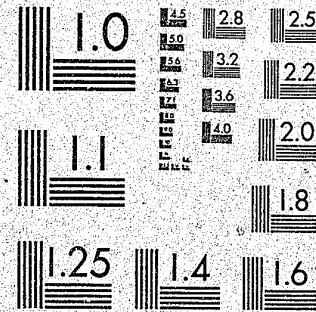


National Criminal Justice Reference Service

ncjrs

This microfiche was produced from documents received for inclusion in the NCJRS data base. Since NCJRS cannot exercise control over the physical condition of the documents submitted, the individual frame quality will vary. The resolution chart on this frame may be used to evaluate the document quality.



MICROCOPY RESOLUTION TEST CHART
NATIONAL BUREAU OF STANDARDS-1963-A

Microfilming procedures used to create this fiche comply with the standards set forth in 41CFR 101-11.504.

Points of view or opinions stated in this document are those of the author(s) and do not represent the official position or policies of the U. S. Department of Justice.

National Institute of Justice
United States Department of Justice
Washington, D. C. 20531

10/30/84

2 6 7

94611

County Commitments for Driving Under the
Influence of Alcohol
1976 to 1983

Prepared by:

Lawrence T. Williams
Manager of Data Processing

U.S. Department of Justice
National Institute of Justice

This document has been reproduced exactly as received from the person or organization originating it. Points of view or opinions stated in this document are those of the authors and do not necessarily represent the official position or policies of the National Institute of Justice.

Permission to reproduce this copyrighted material has been granted by
Massachusetts Department of
Corrections

to the National Criminal Justice Reference Service (NCJRS).

Further reproduction outside of the NCJRS system requires permission of the copyright owner.

Massachusetts Department of Correction

Michael V. Fair
Commissioner

June, 1984

PUBLICATION #13656

Approved by Daniel Carter, State Purchasing Agent

94611

Abstract

This report examines offenders sentenced and committed to county jails and houses of correction during the years 1976 to 1983 for the offense of driving under the influence of alcohol. The report indicates the following findings:

- 1) Commitments for driving under the influence of alcohol increased significantly during this time frame; from 46 in 1976 to 2372 in 1983 - an increase of more than 5,000%.
- 2) Prior to the passage of the new drunk driving law, commitments for driving under the influence of alcohol were increasing - from 1981 to 1982, commitments to county facilities for this offense rose 342%; the new drunk driving law resulted in a significant increase in commitments since its passage (173% increase).
- 3) An increasing percentage of the commitments to county facilities are offenders committed for driving under the influence of alcohol. For example, during 1983 commitments for driving under the influence of alcohol represented one-fourth (25%) of all county commitments.
- 4) Each county had an increase in commitments for this offense since the new law was enacted; for example, from 1981 a year prior to the new law to 1983 a year after the law Essex county experienced a 962% increase in commitments for driving under the influence while Bristol County experienced a 1,367% increase.
- 5) Almost half of the commitments (48%) received a sentence of less than one month from 1976 to 1983 for this offense; during 1983, 37% received a sentence of seven days.
- 6) Offenders committed for driving under the influence of alcohol are older, married or previously married, more educated, and serve shorter sentences when compared to the remainder of the county commitments.

Table of Contents

<u>Item</u>	<u>Page Number</u>
I. Abstract	1
II. Introduction	3
III. Methodology	5
IV. Findings	6
V. Summary	20
VI. Appendix I	22
VII. Appendix II	38

Tables

<u>Description</u>	<u>Page Number</u>
Table I County Commitments for Driving Under the Influence 1976 - 1983	6
Table II Total County Commitments and Commitments for Driving Under the Influence 1976 - 1983	7
Table III Commitments for Driving Under the Influence by County and House of Correction 1976 - 1983	9
Table IV Percentage Increase in Commitments for Driving Under the Influence by County 1982 - 1983	10
Table V County Commitments for Driving Under the Influence as a Percentage of Total Commitments	12
Table VI Sentences for Driving Under the Influence 1976 - 1983	15
Table VII Sentences for County Commitments for Driving Under the Influence - 1983	17

Introduction

In recent years there has been an increasing amount of public concern and scrutiny about the problem of motorists driving motor vehicles under the influence of alcohol. This public concern has been reflected by the increased coverage of drunk driving cases by the media as well as renewed efforts to educate the public as to the serious nature of the problem. There have also been support and advocacy groups established around this issue and other long established groups have been highly vocal about making the public aware of the extent of the problem caused by drunk drivers on the highway.

Some of the public outcry about the problem of drunk drivers has centered around the penalties meted out for individuals found guilty of this offense. There was a perception that the judicial system was not treating this offense with the seriousness that it warranted. More often than not those individuals convicted of this offense had the case placed on file without further action or continued without a finding until some later date when it was often dismissed. As a result of concerns such as these, the Massachusetts Legislature in

September of 1982 passed "an act increasing the penalties for operating a motor vehicle while under the influence of intoxicating liquors". This act stipulated penalties for first offenders and repeat offenders. First offenders can receive probation or a term of imprisonment not to exceed two years. Second offenders must spend a minimum of seven days incarcerated if the offender did not choose participation in a fourteen day residential alcohol program. If an individual had three or more previous convictions or had been assigned to an alcohol program two or more times within the preceding six years, he or she would receive a sentence of at least sixty days and not more than two years. The law also included provisions for revocation of licenses for individuals convicted of this offense.

The legislature was also concerned that offenders convicted of driving under the influence were being treated too leniently and wanted to insure that the judiciary would increase the penalties meted out to these offenders. However, at the same time the legislature was concerned that the offenders receive some kind of treatment and education so that this behavior could be positively impacted. Accordingly, they included in the new provisions a residential alcohol treatment program in lieu of imprisonment with the cost for the fourteen day treatment program to be paid by the offender. One consequence of this provision may be that many convicted offenders are choosing to serve their terms of imprisonment rather than paying for a two week residential treatment program.

This particular report examines county commitments for driving under the influence from 1976 to 1983 in an attempt to gauge the impact of the new drunk driving law as well as to shed some light on the

characteristics of these offenders.

Methodology

For this report, a sample was drawn of all offenders committed to county facilities (jails and houses of correction) for driving under the influence from 1976 to 1983. This sample was taken from the admission and release sheets from each county. The majority of women receiving county sentences serve their time at MCI-Framingham. For example, there were 62 women committed and sentenced to Framingham during 1983 for driving under the influence. These women are not included in the figures for this report.

During the years 1976 to 1983, several variables were collected and added to the data base of information on county commitments. The variables that are available for each year are as follows: age, institution (county), sex, marital status, last grade completed, present offense, and sentence. In later years the variables committing court, weekend sentence status, and jail status were added. In order to give a more complete description of sentences received during 1983, the admission and release sheets for each county were used to collect sentence data in years, months, and days.

Findings

It is important at the outset to give an indication of the number of commitments each year for driving under the influence. Table I presents these results.

Table I
County Commitments for Driving Under the Influence
1976 - 1983

Year	Number	Percent Change
1976	46	
1977	59	+ 28%
1978	73	+ 24%
1979	60	- 18%
1980	191	+218%
1981	295	+ 54%
1982	1305	+342%
1983	2372	+ 82%

As Table I indicates, except for the years from 1978 to 1979, there has been a steady increase in county commitments for driving under the influence. Since 1980, there has been a 1,142% increase in commitments for driving under the influence. From 1981 to 1982, there was an increase of 342% in commitments for driving under the influence. Only four months of 1982 came under the provisions of the new drunk driving law which indicates that the judiciary was responding to the increased public attention to the problem of drunk drivers by increasing the commitments for this offense. Since the passage of the new drunk driving provisions,

commitments to county facilities for driving under the influence have increased by 173%. This figure was arrived at by comparing the commitments to county facilities during the sixteen months of the new law (2837) with the commitments during the previous sixteen month period (1041).

While Table I highlighted the increase in county commitments, it is important also to look at commitments for driving under the influence in relation to the total number of commitments for each year. Table II presents these results.

Table II
Total County Commitments and Commitments for
Driving Under the Influence 1976 - 1983

Year	Commitments for Driving Under the Influence	Total County Commitments	D.W.I. As Percent of Total Commitments
1976	46	4393	(1)
1977	59	4169	(1)
1978	73	4235	(2)
1979	60	4612	(1)
1980	191	5441	(4)
1981	295	6246	(5)
1982	1305	8500	(15)
1983	2372	9617	(25)

As Table II indicates, from 1976 to 1979, commitments for driving under the influence represented approximately one percent of all county commitments. During 1981 the percentage rose to 5% and by 1983, commitments for driving under the influence represented one fourth of all county commitments. More offenders are now being committed to county facilities for driving under the influence of alcohol than any other single offense.

In order to get a better idea of the number of commitments for driving under the influence across individual counties and houses of correction, Table III presents the number of commitments for driving under the influence of alcohol for each house of correction. The county is included in parenthesis next to the name of the house of correction or jail.

Table III

Commitments For Driving Under the Influence by
County and House of Correction 1976 - 1983

Facility	1976	1977	1978	1979	1980	1981	1982	1983
Barnstable (Barnstable)	3	6	2	2	9	10	50	81
Billerica (Middlesex)	17	22	20	13	40	62	265	650
Charles Street (Suffolk)	0	1	1	0	0	1	7	12
Dedham (Norfolk)	0	1	3	0	58	67	131	170
Deer Island (Suffolk)	6	6	1	9	3	4	34	57
Edgartown (Dukes)	0	0	0	0	0	0	4	12
Greenfield (Franklin)	0	0	3	2	2	6	19	25
Lawrence (Essex)	2	0	0	0	5	19	186	200
New Bedford (Bristol)	0	3	4	1	8	9	40	132
Northampton (Hampshire)	2	1	2	4	11	20	38	73
Pittsfield (Berkshire)	0	0	2	1	5	5	42	66
Plymouth (Plymouth)	4	7	13	7	21	21	63	139
Salem (Essex)	2	0	1	8	4	15	133	161
Springfield (Hampden)	6	5	8	5	9	26	94	188
Worcester (Worcester)	4	7	13	8	16	30	199	406
TOTAL	46	59	73	60	191	295	1305	2372

Table III demonstrates the increases in commitments across all counties for driving under the influence of alcohol. All counties experienced an increase in commitments for driving under the influence from 1981 to 1982 which may be a reflection of the new drunk driving law as well as a reflection of the increase in penalties by the judiciary. From 1982 to 1983 commitments increased from a low of 8 percent at the Lawrence House of Correction (Essex County) to a high of 230 percent at the New Bedford House of Correction (Bristol County). Table IV gives the percentage increase in commitments from 1982 to 1983 for each county facility.

Table IV

Percentage Increase in Commitments for Driving Under the Influence by County 1982 - 1983

Facility (County)	Percentage Increase
Barnstable (Barnstable)	52%
Billerica (Middlesex)	145%
Charles Street (Suffolk)	71%
Dedham (Norfolk)	30%
Deer Island (Suffolk)	68%
Edgartown (Dukes)	200%
Greenfield (Franklin)	32%
Lawrence (Essex)	8%
New Bedford (Bristol)	230%
Northampton (Hampshire)	92%
Pittsfield (Berkshire)	57%
Plymouth (Plymouth)	121%
Salem (Essex)	21%
Springfield (Hampden)	100%
Worcester (Worcester)	104%

As Table IV indicates, 6 (40%) of the fifteen houses of correction experienced at least a doubling of the number of commitments for driving under the influence from 1982 to 1983. Two counties (Bristol and Dukes) experienced a tripling of the number of commitments from 1982 to 1983.

Table V presents the number of commitments by county as a percentage of the total number of commitments in order to give a better indication of the impact of the increase in commitments by county.

Table V

County Commitments for Driving Under the Influence As A Percentage
of Total Commitments 1976 - 1983

County	1976			1977			1978			1979		
	Number	Total Commitments	Percent	Number	Total Commitments	Percent	Number	Total Commitments	Percent	Number	Total Commitments	Percent
Barnstable	3	166	(2)	6	151	(4)	2	153	(1)	2	162	(1)
Berkshire	0	172	(0)	0	124	(0)	2	118	(2)	1	146	(1)
Bristol	0	276	(0)	3	293	(1)	4	284	(1)	1	324	(0)
Dukes	0	1	(0)	0	2	(0)	0	1	(0)	0	0	(0)
Essex												
Lawrence	2	199	(1)	0	217	(0)	0	210	(0)	0	250	(0)
Salem	2	182	(1)	0	214	(0)	1	200	(1)	0	209	(4)
Franklin	0	114	(0)	0	137	(0)	3	115	(3)	2	80	(3)
Hampden	6	383	(2)	5	378	(1)	8	403	(2)	5	526	(1)
Hampshire	2	214	(1)	1	132	(1)	2	149	(1)	4	166	(2)
Middlesex	17	872	(2)	22	760	(3)	20	716	(3)	13	913	(1)
Norfolk	0	256	(0)	1	263	(0)	3	231	(1)	0	5	(0)
Plymouth	4	232	(2)	7	234	(3)	13	296	(4)	7	358	(2)
Suffolk												
Charles Street	0	56	(0)	1	67	(1)	1	67	(1)	0	33	(0)
Deer Island	6	465	(1)	6	451	(1)	1	436	(0)	9	606	(1)
Worcester	4	805	(0)	7	746	(1)	13	856	(2)	8	834	(1)
TOTAL	46	4393	(1)	59	4169	(1)	73	4235	(2)	60	4612	(1)

Table V

County Commitments for Driving Under the Influence As A Percentage
of Total Commitments 1976 - 1983
(Continued)

County	1980			1981			1982			1983		
	Number	Total Commitments	Percent	Number	Total Commitments	Percent	Number	Total Commitments	Percent	Number	Total Commitments	Percent
Barnstable	9	212	(4)	10	238	(4)	50	311	(16)	81	321	(25)
Berkshire	5	211	(2)	5	223	(2)	42	348	(12)	66	365	(18)
Bristol	8	382	(2)	9	453	(2)	40	565	(7)	132	644	(20)
Dukes	0	0	(0)	0	0	(0)	4	27	(15)	12	93	(13)
Essex												
Lawrence	5	325	(2)	19	338	(6)	186	571	(32)	200	552	(36)
Salem	4	167	(2)	15	323	(5)	133	545	(24)	161	528	(30)
Franklin	2	118	(2)	6	139	(4)	19	161	(12)	25	170	(15)
Hampden	9	599	(2)	26	771	(3)	94	962	(10)	188	1099	(17)
Hampshire	11	184	(6)	20	200	(10)	38	231	(16)	73	242	(30)
Middlesex	40	999	(4)	62	1211	(5)	265	1478	(18)	650	1863	(35)
Norfolk	58	440	(13)	67	421	(16)	131	632	(21)	170	650	(26)
Plymouth	21	389	(5)	21	375	(6)	63	394	(16)	139	543	(26)
Suffolk												
Charles Street	0	36	(0)	1	51	(2)	17	145	(12)	12	162	(7)
Deer Island	3	488	(1)	4	536	(1)	34	775	(4)	57	814	(7)
Worcester	16	891	(2)	30	967	(3)	199	1355	(15)	406	1571	(26)
TOTAL	191	5441	(4)	295	6246	(5)	1305	8500	(15)	2372	9617	(25)

Table V presents some rather dramatic results. For example, in Middlesex County (Billerica Jail and House of Correction) commitments for driving under the influence averaged two percent of the total number of commitments from 1976 to 1979. There was an increase in 1980 and 1981 and the percentage rose to 18%. For 1983 the percentage rose to 35%. In other words, thirty five percent of all county commitments to Billerica in 1983 were for driving under the influence. Several other counties experienced these dramatic increases also. The percentage of drunk driving commitments in Bristol County went from 2% to 7% to 20% from 1981 to 1982 to 1983; Hampden County went from 3% to 10% to 17% between 1981 to 1983, and Worcester County went from 3% to 15% to 26% between 1981 to 1983. In other words, an increasing percentage of the commitments in county facilities are for driving under the influence. This represents an important change in the county populations.

At this juncture, we examine the sentences received for those offenders committed for driving under the influence from 1976 to 1983. Table VI presents this material.

Table VI

Sentences for Driving Under the Influence 1976 - 1983

	1976		1977		1978		1979		1980		1981		1982		1983		Total	
	Number	Percent	Number	Percent	Number	Percent	Number	Percent	Number	Percent	Number	Percent	Number	Percent	Number	Percent	Number	Percent
Less than 1 Mo.	10	(22)	17	(29)	17	(23)	18	(30)	60	(31)	102	(35)	602	(46)	1304	(55)	2130	(48)
1 Month	9	(20)	10	(17)	16	(22)	13	(22)	51	(27)	68	(23)	307	(24)	305	(13)	779	(18)
2 Months	1	(2)	3	(5)	8	(11)	2	(3)	14	(7)	16	(5)	91	(7)	341	(14)	476	(11)
3 Months	6	(13)	9	(15)	9	(12)	11	(18)	19	(10)	30	(10)	96	(7)	122	(5)	302	(7)
4 Months	0	(0)	0	(0)	1	(1)	0	(0)	1	(1)	3	(1)	8	(1)	18	(1)	31	(1)
5 Months	0	(0)	0	(0)	0	(0)	1	(2)	0	(0)	0	(0)	5	(0)	5	(0)	11	(0)
6 Months	5	(11)	6	(10)	9	(12)	5	(8)	18	(9)	26	(9)	65	(5)	119	(5)	253	(6)
7 Months	0	(0)	0	(0)	1	(1)	0	(0)	0	(0)	0	(0)	2	(0)	2	(0)	5	(0)
8 Months	0	(0)	1	(2)	0	(0)	0	(0)	0	(0)	0	(0)	0	(0)	3	(0)	4	(0)
9-11 Months	0	(0)	0	(0)	0	(0)	0	(0)	2	(1)	3	(1)	11	(1)	10	(0)	26	(1)
1 Year	1	(2)	4	(7)	0	(0)	2	(3)	5	(3)	9	(3)	33	(3)	49	(2)	103	(2)
1-2 Years	0	(0)	0	(0)	0	(0)	1	(2)	2	(1)	2	(1)	9	(1)	8	(0)	22	(1)
2 Years or More	0	(0)	0	(0)	0	(0)	0	(0)	2	(1)	3	(1)	9	(1)	13	(1)	27	(1)
Fine	14	(30)	9	(15)	12	(16)	7	(12)	17	(9)	33	(11)	67	(5)	73	(3)	232	(5)
TOTAL	46	(100)	59	(100)	73	(100)	60	(100)	191	(100)	295	(100)	1305	(100)	2372	(100)	4401	(100)

As Table VI shows, the sentences received for offenders committed for driving under the influence have changed from 1976 to 1983. In 1976, 30% of the offenders received a sentence of a fine and either paid their fine immediately upon commitment or served time in lieu of paying the fine. By 1979, this percentage had been decreased to 12% and by 1983, only 3% of the offenders received a sentence of a fine and either paid their fine immediately upon commitment or served time in lieu of paying the fine. Likewise, in 1976 22% of the drunk driving commitments received a sentence of less than one month; in 1979, 30% received a sentence of less than one month and by 1983, 55% of the drunk driving commitments received a sentence of less than one month. Since the data collected on commitments from 1976 to 1983 grouped all sentences of less than one month together, it is not possible to give a complete picture of sentences received. However, Table VII presents in more detail the sentences received during 1983 for driving under the influence.

Table VII

Sentences for County Commitments for Driving Under the Influence

Sentences	Number	Percent
1 Day	1	(0)
2 Days	2	(0)
3 Days	24	(1)
4 Days	19	(1)
5 Days	11	(0)
6 Days	26	(1)
7 Days	882	(37)
8 Days	73	(3)
9 Days	9	(0)
10 Days	106	(5)
11 Days	2	(0)
12 Days	15	(1)
13 Days	1	(0)
14 Days	68	(3)
15 Days	33	(1)
16 Days	11	(0)
17 Days	1	(0)
18 Days	1	(0)
20 Days	10	(0)
21 Days	4	(0)
22 - 29 Days	5	(0)
1 Month	305	(13)
2 Months	341	(14)
3 Months	122	(5)
4 Months	18	(1)
5 Months	5	(0)
6 Months	119	(5)
7 Months	2	(0)
8 Months	3	(0)
9 - 11 Months	10	(0)
1 Year	49	(2)
1 - 2 Years	8	(0)
2 - 2½ Years	13	(1)
Fine	73	(3)
TOTAL	2372	(100)

This table indicates that 37% of the drunk driving commitments during 1983 received a sentence of 7 days.

Comparison of Drunk Driving Commitments to Other County Commitments

The previous analysis indicates the degree to which there was a tremendous increase in commitments to county facilities for driving under the influence. Also, the results indicate the degree to which the county population has become impacted by offenders committed for driving under the influence of alcohol. This leads to a question about whether those new offenders who are impacting county facilities are significantly different from the remainder of the county commitments. That is, are offenders committed for driving under the influence different from other county commitments?

In order to answer this question, the variables age at commitment, marital status, last grade completed, court committed from, and sentence were characterized according to a series of splits between the drunk driving commitments and the other county commitments committed from 1979 to 1983. The split yielding the highest chi-square value was chosen. Variables that yielded a statistically significant relationship at the .05 probability level ($\chi^2=3.84$, 1 df) were selected as indicators of differences between the drunk driving commitments and non-drunk driving commitments.

Four variables proved to be significant in distinguishing between drunk driving and non-drunk driving commitments. The variables age at

commitment, marital status, sentence, and last grade completed. Offenders committed for driving under the influence are significantly older than the other offenders committed for different offenses. Specifically, 37% of the offenders committed for offenses other than driving under the influence were older than twenty-five at the time of their commitment. However, 60% of the drunk driving commitments were older than twenty-five at the time of their commitments. Offenders committed for non-drunk driving offenses were more likely to be single than those offenders who were committed for driving under the influence of alcohol during this time span. Seventy-two percent of those offenders committed for non-drunk driving offenses were single while only 57% of the offenders committed for driving under the influence were single. In addition, offenders committed for driving under the influence had more education than the remainder of the county commitments during this period. Specifically, 60% of the offenders committed for driving under the influence were high school graduates or had some college background prior to their commitments. However, only 38% of the offenders committed for an offense other than driving under the influence had completed a high school education. Finally, offenders committed for driving under the influence served shorter sentences than offenders committed to county facilities for other offenses. More than half (54%) of the county commitments for driving under the influence of alcohol received either a sentence of less than thirty days or received a sentence of a fine and either paid their fine immediately upon commitment or served time in lieu of paying the fine. However, less than one-fourth (23%) of

the remaining county commitments had served time in lieu of payment of a fine or received a sentence of less than thirty days. Offenders committed for driving under the influence of alcohol were also more likely to receive weekend sentences when compared to the non-drunk driving commitments. Fifteen percent of the drunk drivers during this time period received a weekend sentence while only two percent of the other offenders received a weekend sentence.

Summary

This report focused on offenders committed to county facilities from 1976 to 1983 for the offense of driving under the influence of alcohol. Based on the results presented in this report, it is clear that these offenders have had a significant impact on the county correctional system. The trend prior to the new drunk driving law was toward an increase in commitments for this offense and the new legislation served to accelerate that trend. Since this offense remains one that is of particular concern to the society, it is likely that this increased focus and scrutiny will result in even more commitments for this offense. This has important implications and ramifications for the county correctional system. Each county is struggling to develop adequate resources for handling overcrowding conditions. As this report indicated, offenders committed for driving under the influence are significantly different from those offenders who previously reflected the bulk of county commitments. This has important programmatic implications.

Ways must be developed to deal with these offenders once they are committed. Clearly society is very concerned with the drunk driver and the potential damage he or she can cause. Due to the increased public scrutiny and the new drunk driving legislation, the goal of incarcerating more of these offenders has been and is being met. Along with this increase in detection and incarceration, new programs and methods must be developed to deal with these offenders once they are incarcerated and to assist the county facilities in handling this population.

Appendix I

Sentences for Driving Under the Influence of
Alcohol by County - 1983

Sentences for Driving Under the Influence of Alcohol 1983
Middlesex County (Billerica Jail & House of Correction)

Sentence	Number	Percent
1 Day	1	(0)
3 Days	1	(0)
4 Days	5	(1)
5 Days	3	(1)
6 Days	3	(1)
7 Days	282	(43)
8 Days	49	(8)
9 Days	2	(0)
10 Days	18	(3)
11 Days	1	(0)
12 Days	10	(2)
13 Days	1	(0)
14 Days	17	(3)
15 Days	7	(1)
16 Days	7	(1)
20 Days	4	(1)
22 - 29 Days	1	(0)
1 Month	69	(11)
2 Months	90	(14)
3 Months	32	(5)
4 Months	3	(0)
6 Months	17	(3)
7 Months	1	(0)
8 Months	2	(0)
9 Months	3	(0)
10 Months	10	(2)
1 - 2 Years	1	(0)
2 - 2½ Years	4	(1)
Fine	6	(1)
TOTAL	650	(100)

Sentences for Driving Under the Influence of Alcohol 1983
Suffolk County (Deer Island House of Correction)

Sentence	Number	Percent
6 Days	2	(4)
7 Days	20	(35)
8 Days	4	(7)
14 Days	1	(2)
16 Days	2	(4)
1 Month	6	(11)
2 Months	8	(14)
3 Months	1	(2)
4 Months	1	(2)
6 Months	4	(7)
9 Months	1	(2)
10 Months	6	(11)
1 - 2 Years	1	(2)
TOTAL	57	(100)

Sentences for Driving Under the Influence of Alcohol 1983
Suffolk County (Charles Street Jail)

Sentence	Number	Percent
7 Days	9	(75)
10 Days	1	(8)
Fine	2	(17)
TOTAL	12	(100)

Sentences for Driving Under the Influence of Alcohol 1983
Dukes County (Edgartown Jail & House of Correction)

Sentence	Number	Percent
7 Days	7	(58)
1 Month	1	(8)
2 Months	1	(8)
Fine	3	(25)
TOTAL	12	(100)

Sentences for Driving Under the Influence of Alcohol 1983
Worcester County (Worcester Jail & House of Correction)

Sentence	Number	Percent
2 Days	1	(0)
3 Days	3	(1)
5 Days	1	(0)
7 Days	155	(38)
9 Days	1	(0)
10 Days	29	(7)
12 Days	2	(1)
14 Days	9	(2)
15 Days	2	(1)
20 Days	3	(1)
21 Days	1	(0)
1 Month	66	(16)
2 Months	65	(16)
3 Months	16	(4)
4 Months	2	(1)
5 Months	2	(1)
6 Months	18	(4)
10 Months	2	(1)
2 Years	1	(0)
Fine	27	(7)
TOTAL	406	(100)

Sentences for Driving Under the Influence of Alcohol 1983
Hampden County (Springfield Jail & House of Correction)

Sentence	Number	Percent
3 Days	1	(1)
5 Days	1	(1)
7 Days	84	(45)
10 Days	20	(11)
14 Days	3	(2)
15 Days	1	(1)
21 Days	1	(1)
25 Days	1	(1)
1 Month	19	(10)
2 Months	18	(10)
3 Months	12	(6)
4 Months	3	(2)
6 Months	10	(5)
7 Months	1	(1)
9 Months	1	(1)
10 Months	3	(2)
1 - 2 Years	1	(1)
Fine	8	(4)
TOTAL	188	(100)

Sentences for Driving Under the Influence of Alcohol 1983
Essex County (Salem Jail & House of Correction)

Sentence	Number	Percent
2 Days	1	(1)
3 Days	10	(6)
4 Days	7	(4)
5 Days	1	(1)
6 Days	3	(2)
7 Days	39	(24)
9 Days	1	(1)
10 Days	9	(6)
14 Days	5	(3)
15 Days	8	(5)
17 Days	1	(1)
23 Days	1	(1)
1 Month	23	(14)
2 Months	27	(17)
3 Months	8	(5)
6 Months	12	(7)
8 Months	1	(1)
10 Months	1	(1)
2 Years	2	(1)
Fine	1	(1)
TOTAL	161	(100)

Sentences for Driving Under the Influence of Alcohol 1983
Essex County (Lawrence Jail & House of Correction)

Sentence	Number	Percent
3 Days	3	(2)
4 Days	3	(2)
5 Days	1	(1)
7 Days	75	(38)
10 Days	12	(6)
14 Days	6	(3)
15 Days	3	(2)
20 Days	1	(1)
1 Month	26	(13)
2 Months	41	(21)
3 Months	12	(6)
4 Months	2	(1)
5 Months	1	(1)
6 Months	5	(3)
9 Months	1	(1)
10 Months	2	(1)
Fine	6	(3)
TOTAL	200	(100)

Sentences for Driving Under the Influence of Alcohol 1983
Bristol County (New Bedford Jail & House of Correction)

Sentence	Number	Percent
7 Days	46	(35)
8 Days	3	(2)
9 Days	2	(2)
10 Days	5	(4)
14 Days	3	(2)
15 Days	1	(1)
16 Days	1	(1)
18 Days	1	(1)
20 Days	1	(1)
1 Month	11	(8)
2 Months	29	(22)
3 Months	9	(7)
4 Months	2	(2)
6 Months	4	(3)
10 Months	2	(2)
Fine	12	(9)
TOTAL	132	(100)

Sentences for Driving Under the Influence of Alcohol 1983
Plymouth County (Plymouth Jail & House of Correction)

Sentence	Number	Percent
4 Days	1	(1)
7 Days	45	(32)
8 Days	6	(4)
9 Days	1	(1)
14 Days	11	(8)
15 Days	1	(1)
16 Days	1	(1)
1 Month	18	(13)
2 Months	17	(12)
3 Months	7	(5)
4 Months	2	(1)
5 Months	2	(1)
6 Months	15	(11)
9 Months	1	(1)
10 Months	5	(4)
1 - 2 Years	2	(1)
2 Years	2	(1)
Fine	2	(1)
TOTAL	139	(100)

Sentences for Driving Under the Influence of Alcohol 1983
Berkshire County (Pittsfield Jail & House of Correction)

Sentence	Number	Percent
4 Days	1	(2)
5 Days	2	(3)
7 Days	17	(26)
8 Days	11	(17)
10 Days	2	(3)
14 Days	2	(3)
15 Days	1	(2)
1 Month	13	(20)
2 Months	4	(6)
3 Months	4	(6)
6 Months	5	(8)
9 Months	1	(2)
10 Months	2	(3)
Fine	1	(2)
TOTAL	66	(100)

Sentences for Driving Under the Influence of Alcohol 1983
Norfolk County (Dedham Jail & House of Correction)

Sentence	Number	Percent
3 Days	5	(3)
5 Days	2	(1)
6 Days	16	(9)
7 Days	37	(22)
9 Days	2	(1)
10 Days	6	(4)
14 Days	4	(2)
15 Days	3	(2)
21 Days	2	(1)
23 Days	2	(1)
1 Month	25	(15)
2 Months	22	(13)
3 Months	8	(5)
4 Months	2	(1)
6 Months	15	(9)
9 Months	1	(1)
10 Months	9	(5)
1 - 2 Years	3	(2)
2 - 2½ Years	2	(1)
Fine	4	(2)
TOTAL	170	(100)

Sentences for Driving Under the Influence of Alcohol 1983
Franklin County (Greenfield Jail & House of Correction)

Sentence	Number	Percent
6 Days	1	(4)
7 Days	6	(24)
1 Month	5	(20)
2 Months	4	(16)
3 Months	4	(16)
4 Months	1	(4)
6 Months	3	(12)
10 Months	1	(4)
TOTAL	25	(100)

Sentences for Driving Under the Influence of Alcohol 1983
Hampshire County (Northampton Jail & House of Correction)

Sentence	Number	Percent
6 Days	1	(1)
7 Days	37	(51)
10 Days	2	(3)
12 Days	3	(4)
14 Days	3	(4)
15 Days	2	(3)
20 Days	1	(1)
1 Month	10	(14)
2 Months	7	(10)
3 Months	3	(4)
6 Months	1	(1)
10 Months	2	(3)
2 Years	1	(1)
TOTAL	73	(100)

Sentences for Driving Under the Influence of Alcohol 1983
Barnstable County (Barnstable Jail & House of Correction)

Sentence	Number	Percent
3 Days	1	(1)
4 Days	2	(2)
7 Days	22	(27)
10 Days	3	(4)
11 Days	1	(1)
14 Days	4	(5)
15 Days	4	(5)
1 Month	13	(16)
2 Months	8	(10)
3 Months	6	(7)
6 Months	10	(12)
9 Months	1	(1)
10 Months	4	(5)
2 Years	1	(1)
Fine	1	(1)
TOTAL	81	(100)

Appendix II

County Commitments for Driving Under the Influence
And Total County Commitments 1979 - 1983

	Driving Under Influence		Other County Commitments		Total	
	Number	Percent	Number	Percent	Number	Percent
<u>I. Age at Commitment</u>						
Fifteen	0	(0)	3	(0)	3	(0)
Sixteen	0	(0)	10	(0)	10	(0)
Seventeen	12	(0)	1523	(5)	1535	(5)
Eighteen	58	(1)	2737	(9)	2795	(8)
Nineteen	124	(3)	2866	(10)	2990	(9)
Twenty	213	(5)	2587	(9)	2800	(8)
21 to 25	1273	(30)	9180	(30)	10453	(30)
26 to 29	849	(20)	4202	(14)	5051	(15)
30 to 39	1049	(25)	4849	(16)	5898	(17)
40 to 64	632	(15)	2123	(7)	2755	(8)
65 and Older	13	(0)	113	(0)	126	(0)
TOTAL	4223	(100)	30193	(100)	34416	(100)
<u>II. Sex</u>						
Male	4205	(100)	29687	(98)	33892	(99)
Female	18	(0)	506	(2)	524	(1)
TOTAL	4223	(100)	30193	(100)	34416	(100)
<u>III Marital Status</u>						
Single	2416	(57)	21704	(72)	24120	(70)
Married	1034	(25)	5086	(17)	6120	(18)
Divorced	608	(14)	2487	(8)	3095	(9)
Separated	143	(3)	831	(3)	974	(3)
Widowed	21	(1)	77	(1)	98	(0)
Common Law	0	(0)	2	(0)	2	(0)
Unknown	1	(0)	6	(0)	7	(0)
TOTAL	4223	(100)	30193	(100)	34416	(100)

	Driving Under Influence		Other County Commitments		Total	
	Number	Percent	Number	Percent	Number	Percent
IV. Last Grade Completed						
Unknown	20	(1)	202	(1)	222	(1)
First	6	(0)	120	(0)	126	(0)
Second	7	(0)	57	(0)	64	(0)
Third	22	(1)	100	(0)	122	(0)
Fourth	21	(1)	149	(1)	170	(1)
Fifth	21	(1)	174	(1)	195	(1)
Sixth	32	(1)	415	(1)	447	(1)
Seventh	62	(2)	845	(3)	907	(3)
Eight	200	(5)	2299	(8)	2499	(7)
Ninth	326	(8)	4067	(14)	4393	(13)
Tenth	500	(12)	5686	(19)	6186	(18)
Eleventh	486	(12)	4805	(16)	5291	(15)
Twelfth	1925	(46)	9026	(30)	10951	(32)
Some College	440	(10)	1810	(6)	2250	(7)
College Graduate	137	(3)	329	(1)	466	(1)
Graduate School	10	(0)	79	(0)	89	(0)
Ph.D.	8	(0)	30	(0)	38	(0)
TOTAL	4223	(100)	30193	(100)	34416	(100)
V. Jail Sentence						
Not Applicable	4197	(99)	29548	(98)	33745	(98)
Jail Sentence	26	(1)	645	(2)	671	(2)
TOTAL	4223	(100)	30193	(100)	34416	(100)
VI Weekend Sentence						
Not Applicable	3584	(85)	29519	(98)	33103	(96)
Weekend Sentence	639	(15)	674	(2)	1313	(4)
TOTAL	4223	(100)	30193	(100)	34416	(100)

END