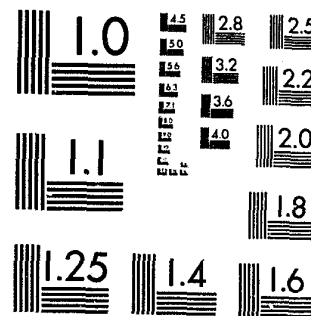


National Criminal Justice Reference Service

ncjrs

This microfiche was produced from documents received for inclusion in the NCJRS data base. Since NCJRS cannot exercise control over the physical condition of the documents submitted, the individual frame quality will vary. The resolution chart on this frame may be used to evaluate the document quality.



MICROCOPY RESOLUTION TEST CHART
NATIONAL BUREAU OF STANDARDS-1963-A

Microfilming procedures used to create this fiche comply with the standards set forth in 41CFR 101-11.504.

Points of view or opinions stated in this document are those of the author(s) and do not represent the official position or policies of the U. S. Department of Justice.

National Institute of Justice
United States Department of Justice
Washington, D. C. 20531

10/11/85

97518

U.S. Department of Justice
National Institute of Justice

97518

This document has been reproduced exactly as received from the person or organization originating it. Points of view or opinions stated in this document are those of the authors and do not necessarily represent the official position or policies of the National Institute of Justice.

Permission to reproduce this copyrighted material has been granted by

Commissioner of Correctional
Services, HONG KONG

to the National Criminal Justice Reference Service (NCJRS).

Further reproduction outside of the NCJRS system requires permission of the copyright owner.

DRUG ADDICTION RESEARCH PROGRAMME
1983

CORRECTIONAL SERVICES DEPARTMENT, HONG KONG

T.G. GARNER, C.B.E., F.B.I.M., J.P.

COMMISSIONER OF CORRECTIONAL SERVICES

CONTENTS

	Page
I. The Department's Efforts to Cope with the Increasing Number of Young Addicts Admitted into the Compulsory Placement Programme	1
II. Compulsory Placement Programme	2
III. Research of the Compulsory Placement Programme	3
IV. Research Content	3
V. Definition of Drugs and Drug Dependent	4
VI. Findings :-	4 - 12
[A] Personal Attributes and Attainments	4 - 7
1. Age on Admission	4
2. Place of Birth	5
3. Educational Attainment	6
4. Occupation	7
5. Monthly Income	7
6. Employment in the Illicit Drug Trade	7
[B] Family Particulars	7 - 8
1. Marital Status	7
2. Living Arrangements	8
[C] Environmental Factors	8
1. Residential District	8
2. Type of Accommodation	8

NCJRS

APR 19 1985

ACQUISITIONS

	Page
[D] Addiction Process	8 - 10
1. Causation Claimed/Peer Association at First Intake of Drugs	8
2. Age at First Intake of Drugs	9
3. Drug Used	9
4. Method of Taking Drugs	9
5. Daily Cost of Drug	10
6. Procurement of Drugs by District	10
7. Length of Drug Dependence	10
[E] Treatment Experience	10
Number of Previous Treatments for Drug Dependence	10
[F] Criminal History	11
1. Age at First Conviction	11
2. Previous Convictions	11
3. Previous Institutional Sentences	12
4. Present Offence	12
5. Gang Affiliation	12
VII. Profiles :-	12 - 14
[A] The 1983 Male Drug Dependent	12 - 13
[B] The 1983 Female Drug Dependent	13 - 14

T A B L E S

	Page
Table 1 Admissions of Young Drug Addiction Treatment Centre Inmates	15
Table 2 Age on Admission	16
Table 3 Place of Birth	16
Table 4 Years of Stay in Hong Kong	17
Table 5 Educational Attainment	17
Table 6 Occupation Claimed on Admission	18
Table 7 Breakdown of the Female Workers in Services and Recreation	19
Table 8 Monthly Income	20
Table 9 Employment in the Illicit Drug Trade	21
Table 10 Marital Status	22
Table 11 Living Arrangements	23
Table 12 Drug Dependents by their District of Residence	24
Table 13 Type of Accommodation	25
Table 14 Causation Claimed	26
Table 15 Peer Association at First Intake of Drugs	27
Table 16 Age at First Intake of Drugs	28
Table 17 Drug Used Prior to Admission	29
Table 18 Method Used Prior to Admission	30
Table 19 Daily Cost of Drug	31
Table 20 Procurement of Drugs by District	32
Table 21 Number of Years Dependent on Drugs	33
Table 22 Number of Previous Treatments for Drug Dependence	34
Table 23 Age at First Conviction	35
Table 24 Type of First Offence	36
Table 25 Number of Previous Convictions	37
Table 26 Number of Previous Institutional Sentences	38
Table 27 Type of Present Offence	39
Table 28 Gang Affiliation	40

FIGURES

	Page
Figure 1 Admission of Drug Dependents aged under 21 (1969 - 1983)	1
Figure 2 Age on Admission amongst Male Addicts	5
Figure 3 Educational Attainment amongst Male Addicts	6
Figure 4 Method of Taking Drugs amongst Male Drug Dependents	9
Figure 5 Number of Previous Treatment of Male Drug Dependents	11

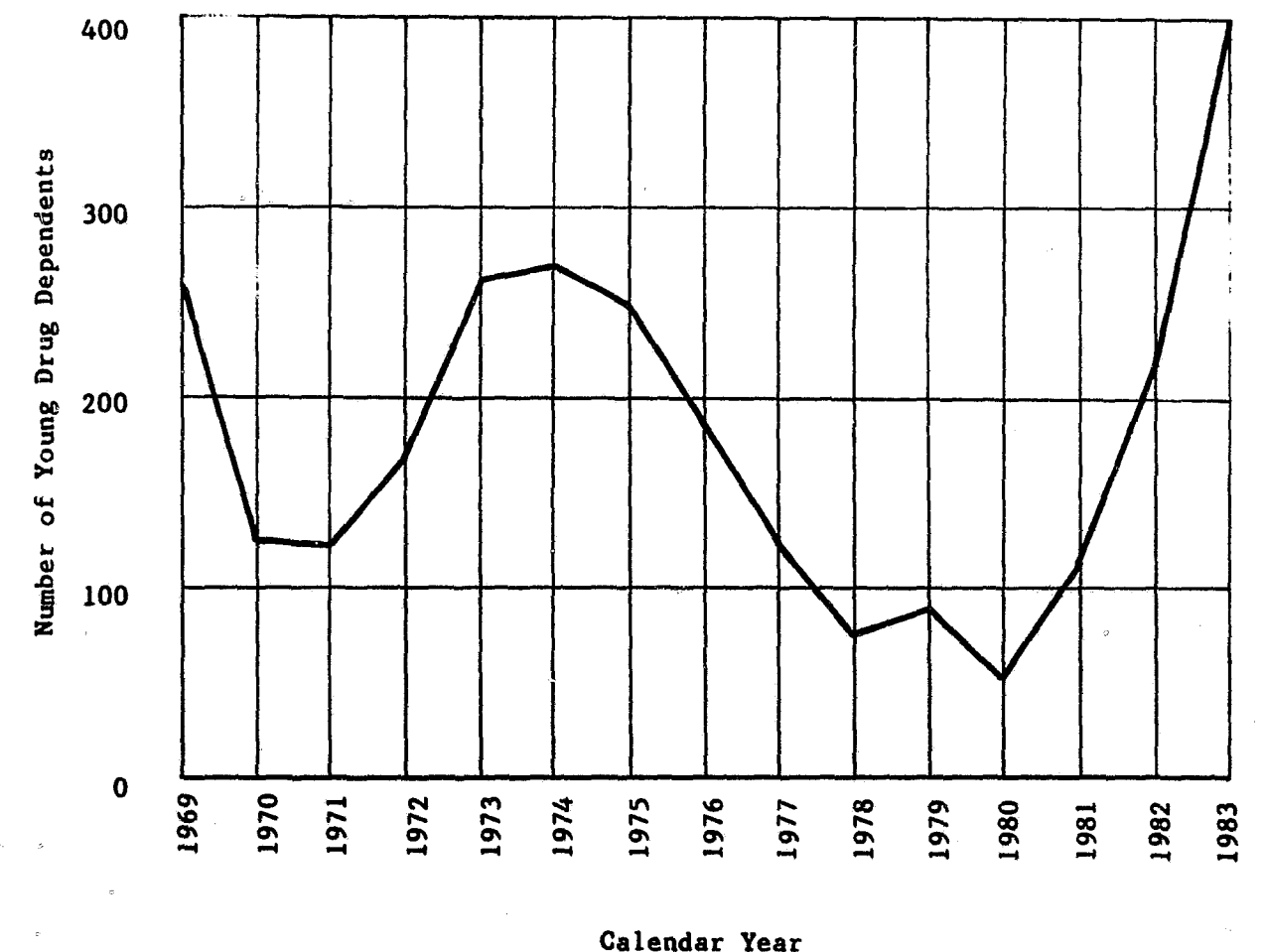
DRUG ADDICTION RESEARCH PROGRAMME

1983

I. THE DEPARTMENT'S EFFORTS TO COPE WITH THE INCREASING NUMBER OF YOUNG ADDICTS ADMITTED INTO THE COMPULSORY PLACEMENT PROGRAMME

An examination of admission statistics in relation to the compulsory placement programme reveals an aggravating situation with regard to young persons aged between 14 to under 21 addicted to drugs. The total number of young addicts admitted into the compulsory placement programme was 395 in 1983, the highest recorded since the programme commenced in 1969. It is further noted that the previous downward trend in the admission of young addicts (270 in 1974, declined to 52 in 1980) was reversed during 1981 when 116 young addicts were admitted (see Table 1 on page 15). The admission of young addicts rose to 220 in 1982 and a record high of 395 in 1983.

Figure 1 : Admission of Drug Dependents aged under 21 (1969 - 1983)



Noting the increase of young addicts, the department has redeployed resources to meet this problem. An interim measure was the expansion of the accommodation in the young inmates section of Hei Ling Chau Treatment Centre from 64 to 110 places in January 1983. Then, as the number of young addicts continued to grow, the department closed the young inmates section in that Centre, and redesignated Nei Kwu Chau as a drug addiction treatment centre for the treatment of young addicts with accommodation for 136 persons.

Under the compulsory placement programme, inmates are required to undergo treatment ranging from a minimum of four months to a maximum of twelve. Actual release of an individual inmate depends on his progress during the treatment period. The average length of stay for young addicts has been reduced from 6 months 18 days in 1981 to 6 months 1 day in 1982 and 5 months 2 days in 1983, while maintaining standards of treatment and success rates. The treatment period for male adult addicts has also been reduced from 6 months 12 days in 1981 to 5 months 17 days in 1982 and 4 months 19 days in 1983.

II. COMPULSORY PLACEMENT PROGRAMME

The compulsory placement programme operated by the Correctional Services Department aims at the total rehabilitation of drug dependents, thereby enabling them to lead a normal and useful life. The complete cure and rehabilitation entails three phases of meticulous effort - first the restoration of physical health, then the up-rooting of psychological and emotional dependence on drugs, and finally re-adjustment into the community.

Physical health is restored by providing full medical care. Everyone is given a thorough medical examination on admission, and regular medical check-ups are carried out to monitor physical progress during the treatment period.

Psychological and emotional dependence is tackled by a combination of work therapy and individual or group counselling by professional staff, including aftercare officers trained in social work and a clinical psychologist. Work therapy is a very important part of the programme, and is designed to progressively improve the inmates' health and instil a sense of pride and self-confidence. A great deal of the work is community-orientated giving inmates the satisfaction of achieving something worthwhile while benefiting the community.

Social re-adjustment involves assistance by aftercare officers in finding employment and accommodation, and everyone released from institutional care must have a confirmed job or placement in full-time educational studies. Aftercare officers then provide guidance, assistance and general supervision during the 12 months following release. Research has shown that an ex-drug dependent is most vulnerable to relapse during this critical period following treatment and that the interest, assistance and guidance of the aftercare staff is crucial to success.

III. RESEARCH OF THE COMPULSORY PLACEMENT PROGRAMME

The Drug Addiction Research Programme is an annual project which endeavours to draw up profiles of young and adult drug dependents of both sexes admitted into the Compulsory Placement Programme. These profiles are used to assist in the formulation of policy and decision-making in the development of effective treatment programmes.

IV. RESEARCH CONTENT

The Drug Addiction Research Programme attempts to collect detailed information on six major characteristics of the drug dependents. These characteristics are personal attributes and attainment, family particulars, environmental factors, the addiction process, treatment experience and criminal history.

Data was obtained through personal interviews upon admission with the use of a pre-designed questionnaire.

V. DEFINITION OF DRUGS AND DRUG DEPENDENT

Drugs

The term 'drugs' used throughout this research refers to drugs obtained from the illicit market which are mainly heroin, but also include opium, morphine, barbitone, L.S.D., cannabis, amphetamines, etc.

Drug Dependent

Unless otherwise specified, the term 'drug dependent' refers to a person who abused any one of the above-mentioned 'drugs', became dependent on it and was admitted for treatment in a drug addiction treatment centre operated by the Correctional Services Department under the Drug Addiction Treatment Centres Ordinance.

VI. FINDINGS

The Drug Addiction Research Programme 1983 covers all drug dependents admitted into the Compulsory Placement Programme in 1983. This includes 2,043 males and 73 females. Of these, 381 or 18.6% of the males and 14 or 19.2% of the females were aged between 14 to under 21 when admitted.

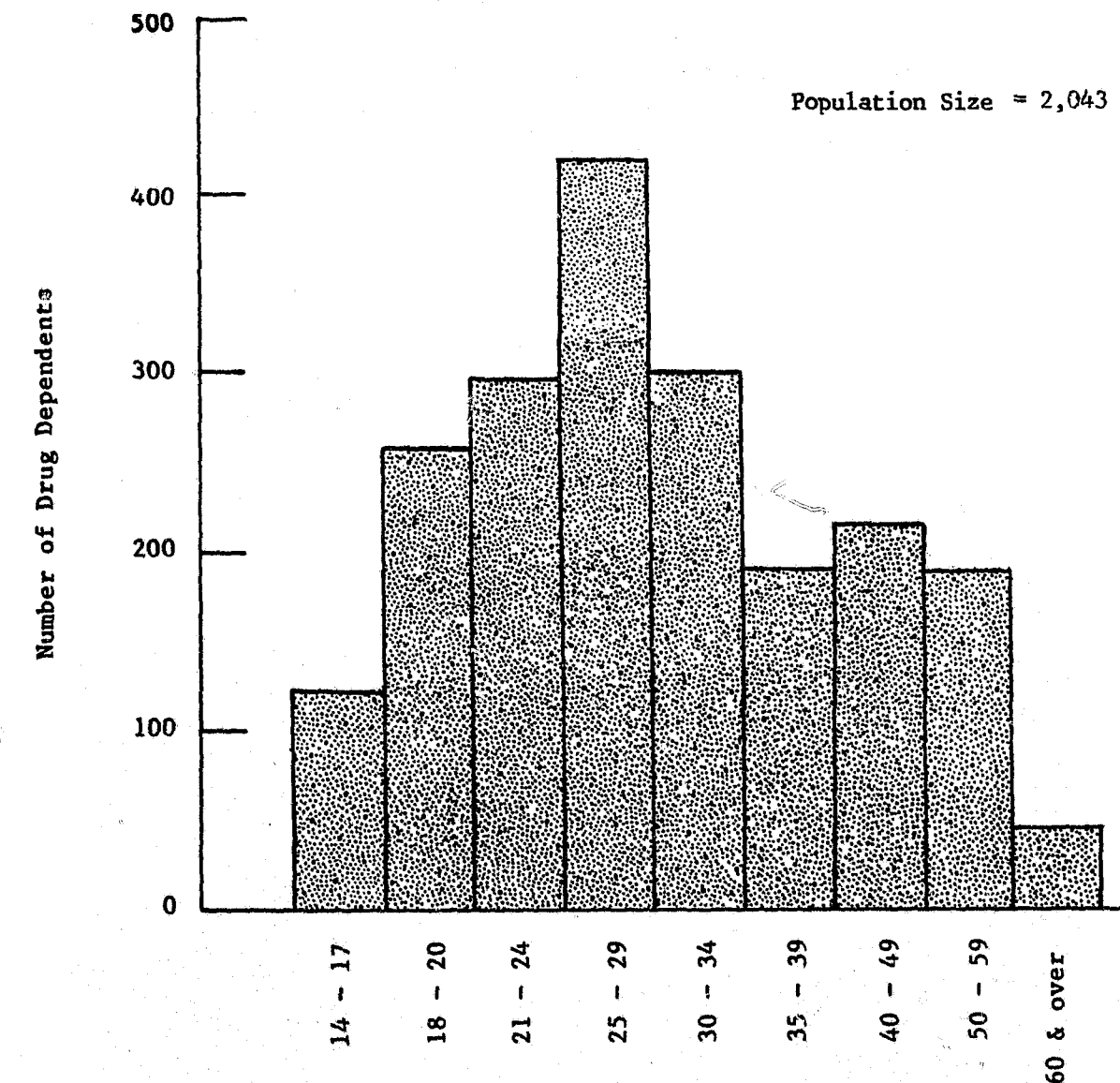
[A] Personal Attributes and Attainments

1. Age on Admission

There was a significant increase in the number of young persons aged between 14 to under 21 admitted in 1983 : 395 compared with 220 in 1982, 116 in 1981 and 52 in 1980. Furthermore, it is noted that young male drug dependents aged under 21 accounted for 18.6% of the total male admissions in 1983. Corresponding figures for the year 1981 and 1982 were 7.0% and 12.3% respectively (see Table 2).

In terms of age distribution, adult addicts aged 25-29 were the predominant age group amongst the males, i.e. 421 or 20.6%. As for females, the most numerous group was within the age bracket 30-34 (26.0%) followed by those aged 25-29 (21.9%).

Figure 2 : Age on Admission amongst Male Addicts



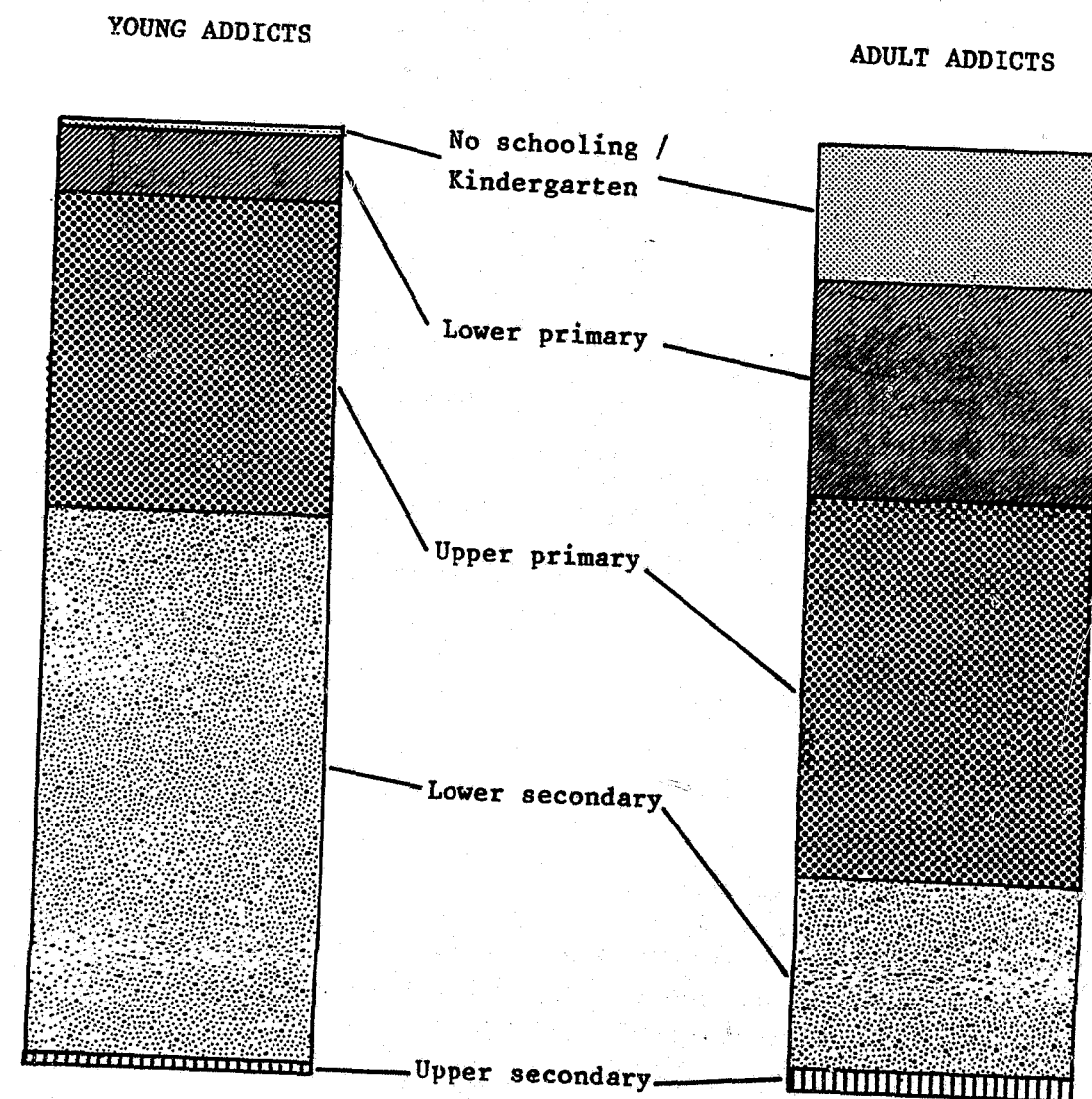
2. Place of Birth

As shown in Table 3, 1,034 or 60.1% of the adult addicts and 366 or 92.7% of the young addicts claimed that they were born in Hong Kong.

3. Educational Attainment

The young drug dependents had a generally higher educational attainment than their adult counterparts. As can be seen from Table 5, a total of 233 (13.5%) adult drug dependents but only 2 (0.5%) young inmates claimed to have received no formal education at all. On the other hand, 234 or 59.2% of the young addicts as compared with 419 or 24.3% of the adult addicts had received some schooling at secondary level. None of the adult and young addicts had received tertiary education.

Figure 3 : Educational Attainment amongst Male Addicts



4. Occupation

45.4% of the adult addicts and 34.9% of the young addicts were employed as either craftsmen/production workers or unskilled labourers. A close look at the occupation of the females reveals that 4 (28.6%) young inmates and 27 (45.8%) adult inmates were employed in the service industry or in entertainment establishments. Of these, 23 females professed to have been employed as prostitutes, dance hostesses or massage girls before admission. This might be related to the fact that their expensive drug addiction could hardly be supported by lawful employment as their earning power was limited by a lack of schooling and vocational training.

5. Monthly Income

The average monthly income for male and female adults who have been employed was \$2,532 and \$2,380 respectively, and for young persons was \$1,925 and \$2,250.

6. Employment in the Illicit Drug Trade

There were 75 drug dependents who claimed to have been employed in the drug trade and all were males. It is noted that the proportion of young addicts who were employed in the illicit drug trade (33 or 8.7%) was higher than that of the adult addicts (42 or 2.5%) (See Table 9).

[B] Family Particulars

1. Marital Status

1,089 or 63.3% of the adult addicts and 373 or 94.4% of the young addicts claimed to be single. It is interesting to note that among the 24 females who claimed to have a spouse, 17 or 70.8% claimed to have been cohabiting with a man whereas only 7 or 29.2% were reported to be married.

There were 136 male adults (8.2%) and 5 female adults (8.5%) who professed to be either separated, divorced or widowed (see Table 10).

2. Living Arrangements

Despite the fact that 489 or 23.9% of the males claimed to be married or cohabited, only 255 or 12.5% were living with their wives and children prior to admission. This indicates that as a consequence of addiction to drugs, a considerable number of males have been physically alienated from their families.

[C] Environmental Factors

1. Residential District

There was a steady increase in the number of drug dependents who claimed to reside in the New Territories. In 1981 only 25.4% of the addicts claimed that they lived there, but the percentage increased to 28.4% in 1982 and 32.0% in 1983. This is probably due to the development of new towns in the New Territories and the resultant population growth in these areas.

It is also noted that among the young addicts, the proportion who claimed to reside in the New Territories was 44.1%, which was much higher than that of the adults (29.3%).

2. Types of Accommodation

A total of 795 or 46.2% of the adult addicts and 272 or 68.9% of the young addicts were reported to have been living in Government Public Housing prior to admission.

[D] Addiction Process

1. Causation claimed/Peer Association at First Intake of Drugs

1,622 or 94.2% of the adult drug dependents and 380 or 96.2% of the young drug dependents claimed either curiosity or peer group pressure as the main cause of their addiction. The overwhelming majority, 355 or 89.9% of the young addicts and 1,390 or 80.8% of the adult addicts, after being questioned in depth, claimed to be with friends of the same sex when taking drugs for the first time.

2. Age at First Intake of Drugs

1,071 or 52.4% of the male addicts and 49 or 67.1% of the female addicts started experimenting with drugs when they were under the age of 21. This means that over half of the drug dependents started using drugs during adolescence when they were more easily influenced and highly vulnerable to peer group pressure.

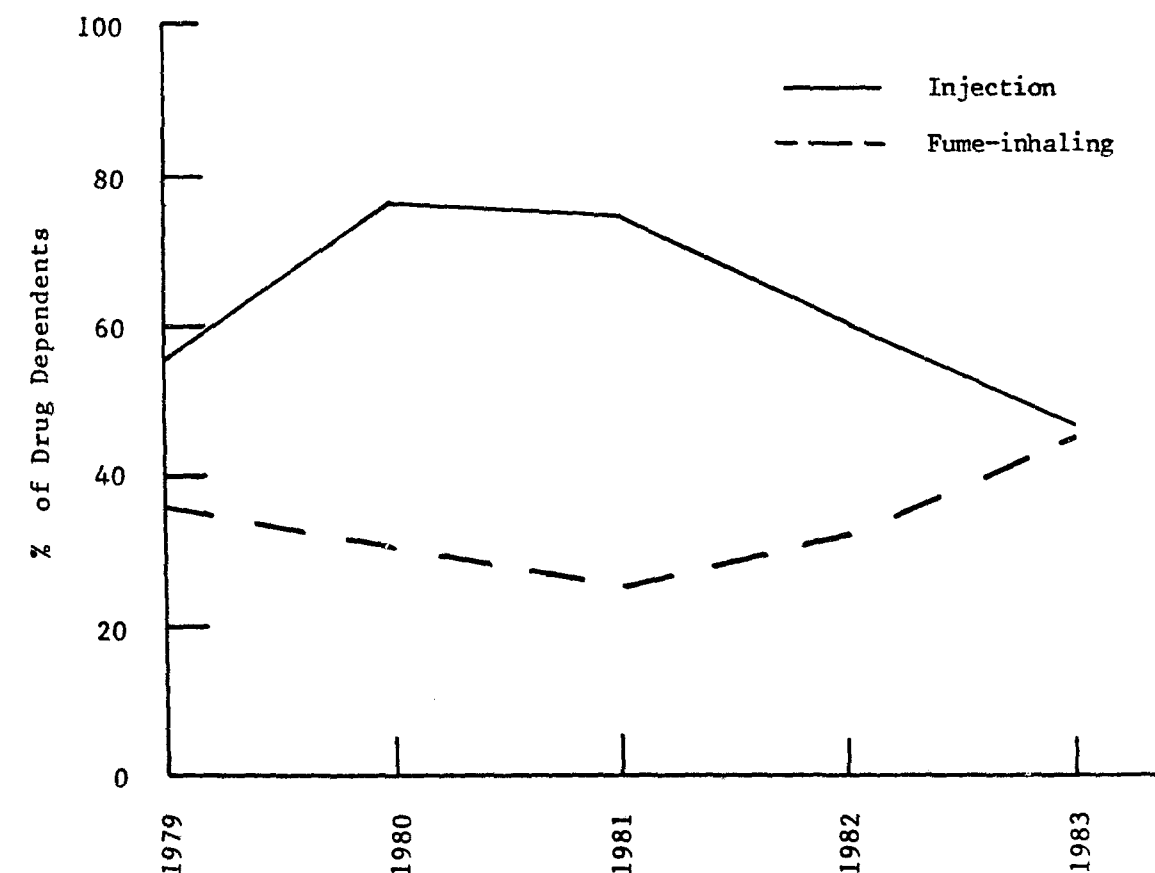
3. Drugs Used

Heroin still continued to be by far the most popular drug of abuse : 99.2% of adult addicts and 98.5% of the young addicts claimed to consume heroin.

4. Method of Taking Drugs

Injection and fume-inhaling are the most common methods of taking heroin in Hong Kong.

Figure 4 : Method of Taking Drugs amongst Male Drug Dependents



It is noted that the proportion of male drug dependents who used the injection method had dropped continuously from 74.1% in 1981 to 60.0% in 1982 and 46.4% in 1983. On the other hand, the fume-inhaling method rose drastically from 24.7% in 1981 to 32.0% in 1982 and 45.5% in 1983 for male addicts. The switch from injection to fume-inhaling might be related to the declining price of heroin over the past few years.

5. Daily Cost of Drug

In terms of proportion, 743 or 43.2% of the adult addicts compared with 211 or 53.4% of the young addicts claimed to have spent between \$50 - \$75 on drugs each day.

6. Procurement of Drugs by District

As anticipated, the most popular districts where the drugs were procured are the densely populated areas, namely, Shum Shui Po (10.6%), Yau Ma Tei and Mong Kok (10.8%), Kwun Tong (11.5%) and Tsuen Wan (15.2%).

7. Length of Drug Dependence

It is noted that the average lengths of dependence were 11.7 years for male adult drug dependents and 2.6 years for young male addicts. For the females, the average lengths of dependence were 8.3 years for adults and 3.2 years for young addicts.

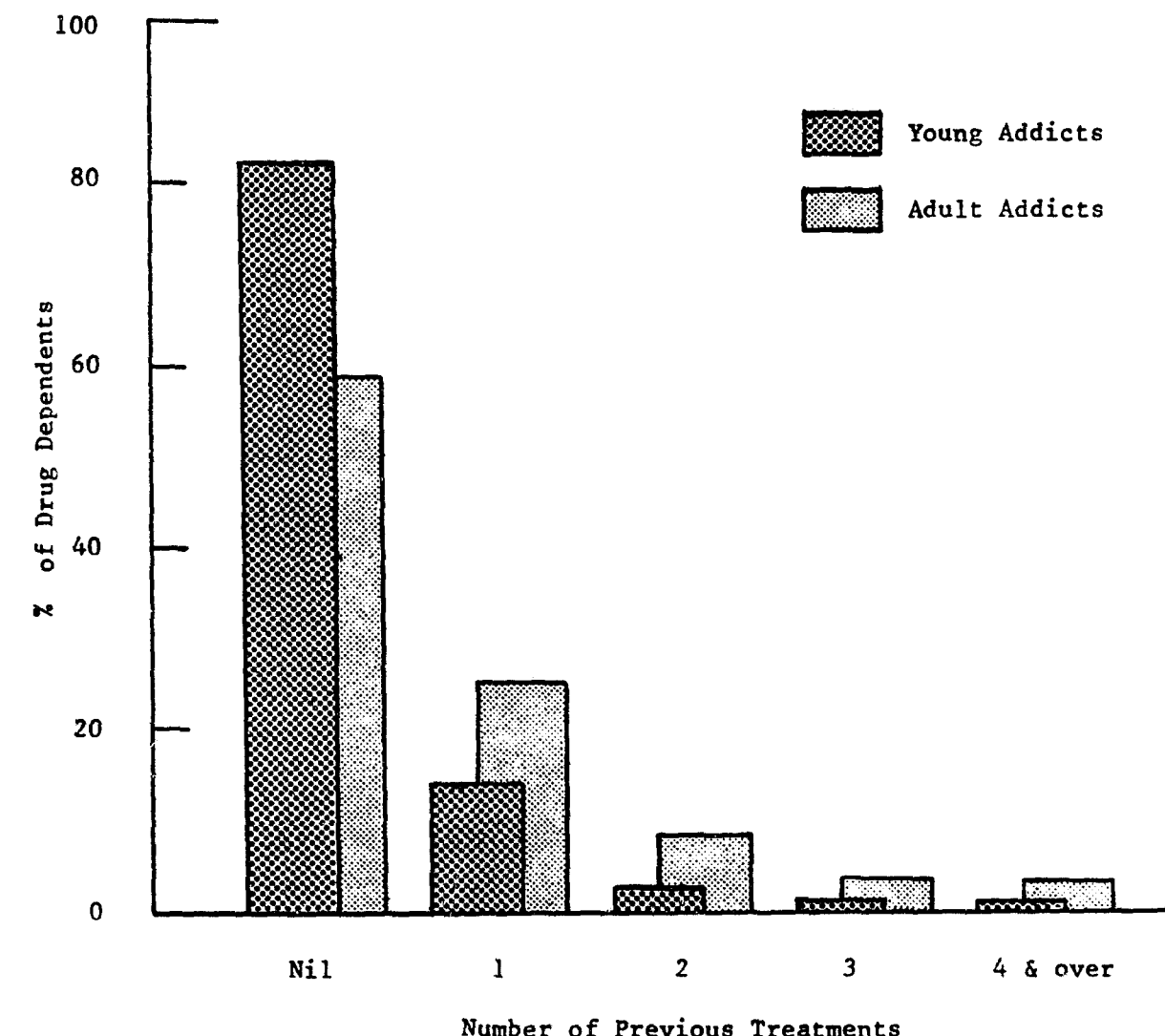
[E] Treatment Experience

1. Number of Previous Treatments for Drug Dependence

1,017 or 59.1% of the adult addicts compared with 325 or 82.3% of the young addicts had never been treated for their drug dependence before admission.

Regarding the previous treatment experience(s) of male and female drug dependents, it is noted that a higher proportion of the female drug dependents (78.1%) as compared with their male counterparts (62.9%) had not received any treatment prior to admission.

Figure 5 : Number of Previous Treatment of Male Drug Dependents



[F] Criminal History

1. Age at First Conviction

It is noted that 1,111 or 54.4% of the males and 48 or 65.8% of the females were first convicted of a criminal offence when they were under the age of 21.

2. Previous Convictions

A total of 1,547 (89.9%) adult drug dependents compared with 251 (63.5%) young addicts had previously been convicted prior to admission. It is also noted that 915 (53.2%) adult drug dependents and 21 (5.3%) young inmates had four or more previous convictions.

3. Previous Institutional Sentences

373 or 21.7% of the adult drug dependents compared with 281 or 71.1% of the young addicts have never served any previous institutional sentence before admission. It is also noted that 992 or 57.6% of the adults and 114 or 28.9% of the young addicts had one to five previous institutional sentences prior to the current sentence.

4. Present Offence

The majority of drug dependents admitted into drug addiction treatment centres were convicted of narcotic offences (1,451 or 84.3% for the adults and 275 or 69.6% for young addicts). The next predominant offence committed by drug dependents was against property (259 or 15.0% for adults and 110 or 27.8% for young addicts).

5. Gang Affiliation

60.0% of the adult addicts and 81.5% of the young addicts claimed to be affiliated with a gang.

VII. PROFILES

[A] The 1983 Male Drug Dependent

(a) For an adult male drug dependent in 1983, he was born in Hong Kong and was in his middle thirties when currently admitted into a drug addiction treatment centre. He had some schooling up to upper primary level and was employed as a manual labourer. He was single and lived with his parent(s) in a Public Housing unit in Kowloon.

Due to association with other drug dependents or through curiosity, he first experimented with drugs between the ages of 18-24 in the company of friends of the same sex who were drug dependents. He spent about \$50 - \$75 a day on drugs before the current admission. In pursuit of an instant and direct effect, he preferred injecting heroin whenever he had a craving. Before entering the compulsory placement programme, he had either never received treatment or had been treated only once for his dependence.

He had a criminal record and was affiliated with a gang before admission. He was admitted to a Drug Addiction Treatment Centre for a narcotic offence.

(b) The 1983 young male drug dependent was also born in Hong Kong and was admitted into a drug addiction treatment centre at the age of eighteen. He had received an education up to lower secondary level.

He was single and lived with his parent(s) in Public Housing in the New Territories. He was employed as an unskilled labourer.

Before the age of 18, and whilst associating with friends who were drug dependents, he started to experiment with drugs. He normally spent about \$50 - \$75 a day on heroin which he injected or inhaled the fumes.

Before entering the compulsory placement programme, he had never received treatment.

He had either no conviction record or just one previous offence, and was affiliated with a gang before admission. He was admitted to a Drug Addiction Treatment Centre for a narcotic offence.

[B] The 1983 Female Drug Dependent

(a) For an adult female drug dependent in 1983, she was born in Hong Kong and was in her early thirties when currently admitted into a drug addiction treatment centre. She had schooling up to upper primary level.

She was single and lived with her parent(s) in a Public Housing unit in Kowloon. She earned a living either as a dance-hostess, prostitute or waitress.

Before the age of 21, and whilst associating with friends who were drug dependents, she started to experiment with drugs. After she became a drug dependent she spent about fifty dollars a day on heroin which she injected.

She had never received treatment prior to admission into the compulsory placement programme. Her first conviction was made during her adolescence. She was admitted into the compulsory placement programme as a result of being convicted of a narcotic offence.

(b) The 1983 young female drug dependent was born in Hong Kong and was admitted to a drug addict treatment centre at the age of nineteen. She had received schooling up to upper primary level.

She was co-habiting with a man and was either a housewife or if employed she worked as a waitress.

Before the age of 18, through curiosity and whilst associating with friends, she first experimented with drugs. She normally spent about \$50 - \$75 a day on heroin by inhaling the fumes.

She had never received treatment for her dependence prior to admission. She was admitted into a drug addiction treatment centre for a narcotic offence.

Table 1 : Admissions of Young Drug Addiction Treatment Centre Inmates

YEAR	MALES			FEMALES			TOTAL		
	Age under 21	Total Admission	%	Age under 21	Total Admission	%	Age under 21	Total Admission	%
1969	253	996	25.4	3	58	5.2	256	1,054	24.3
1970	124	828	15.0	2	57	3.5	126	885	14.2
1971	118	772	15.3	4	49	8.2	122	821	14.9
1972	163	1,323	12.3	7	51	13.7	170	1,374	12.4
1973	249	1,452	17.1	11	45	24.4	260	1,497	17.4
1974	252	1,870	13.5	18	90	20.0	270	1,960	13.8
1975	234	1,952	12.0	19	85	22.4	253	2,037	12.4
1976	170	2,067	8.2	16	93	17.2	186	2,160	8.6
1977	114	2,178	5.2	12	91	13.2	126	2,269	5.6
1978	63	1,927	3.3	12	72	16.7	75	1,999	3.8
1979	83	1,587	5.2	6	68	8.8	89	1,655	5.4
1980	47	1,472	3.2	5	46	10.9	52	1,518	3.4
1981	113	1,623	7.0	3	52	5.8	116	1,675	6.9
1982	214	1,743	12.3	6	40	15.0	220	1,783	12.3
1983	381	2,043	18.6	14	73	19.2	395	2,116	18.7

Table 2 : Age on Admission

Age Group	MALES		FEMALES		TOTAL	
	No.	%	No.	%	No.	%
14 - 17	124	6.1	2	2.7	126	6.0
18 - 20	257	12.6	12	16.4	269	12.7
21 - 24	299	14.6	13	17.8	312	14.7
25 - 29	421	20.6	16	21.9	437	20.7
30 - 34	301	14.7	19	26.0	320	15.1
35 - 39	191	9.3	3	4.1	194	9.2
40 - 49	217	10.6	4	5.5	221	10.4
50 - 59	188	9.2	4	5.5	192	9.1
60 and over	45	2.2	-	-	45	2.1
Total	2,043	100.0	73	100.0	2,116	100.0

Table 3 : Place of Birth

Place of Birth	MALES		FEMALES		TOTAL	
	Age under 21		Age under 21		Age under 21	
	No.	%	No.	%	No.	%
Hong Kong	354	92.9	987	59.4	12	85.7
Elsewhere	27	7.1	675	40.6	2	14.3
Total	381	100.0	1,662	100.0	14	100.0

Table 4 : Years of Stay in Hong Kong

Number of Years	MALES		FEMALES		TOTAL	
	Age under 21		Age under 21		Age under 21	
	No.	%	No.	%	No.	%
0 - 5	7	1.8	28	1.7	-	-
6 - 10	7	1.8	22	1.3	1	7.1
11 - 15	24	6.3	40	2.4	1	7.1
16 - 20	343	90.0	58	3.5	12	85.7
21 - 25	-	-	465	28.0	-	-
26 - 30	-	-	478	28.8	-	-
31 - 35	-	-	335	20.2	-	-
36 - 40	-	-	131	7.9	-	-
41 - 50	-	-	69	4.2	-	-
51 - 60	-	-	33	2.0	-	-
61 and over	-	-	3	0.2	-	-
Total	381	100.0	1,662	100.0	14	100.0

Table 5 : Educational Attainment

Educational Attainment	MALES		FEMALES		TOTAL	
	Age under 21		Age under 21		Age under 21	
	No.	%	No.	%	No.	%
No schooling / Kindergarten	2	0.5	224	13.5	-	-
Lower primary	24	6.3	373	22.4	1	7.1
Upper primary	127	33.3	658	40.0	7	50.0
Lower secondary	219	57.5	332	20.0	5	35.7
Upper secondary	9	2.4	75	4.5	1	7.1
Post secondary and over	-	-	-	-	-	-
Total	381	100.0	1,662	100.0	14	100.0

Table 6 : Occupation Claimed on Admission

Occupation	MALES				FEMALES				TOTAL			
	Age under 21		Age 21 or over		Age under 21		Age 21 or over		Age under 21		Age 21 or over	
	No.	%	No.	%	No.	%	No.	%	No.	%	No.	%
Unemployed / Housewives	67	17.6	267	16.1	9	64.3	24	40.7	76	19.2	291	16.9
Farmers, fisherfolk and related workers	8	2.1	45	2.7	-	-	-	-	8	2.0	45	2.6
Miners, quarrymen and related workers	-	-	2	0.1	-	-	-	-	-	-	2	0.1
Workers in services and recreation	110	28.9	313	18.8	4	28.6	27	45.8	114	28.9	340	19.8
Workers in transport and communication	34	8.9	97	5.8	-	-	-	-	34	8.6	97	5.6
Clerical and sales workers	24	6.3	156	9.4	-	-	4	6.8	24	6.1	160	9.3
Craftsmen, production workers and unskilled labourers	137	36.0	778	46.8	1	7.1	4	6.8	138	34.9	782	45.4
Administrative and technical workers	1	0.3	4	0.2	-	-	-	-	1	0.3	4	0.2
Total	381	100.0	1,662	100.0	14	100.0	59	100.0	395	100.0	1,721	100.0

Table 7 : Breakdown of the Female Workers in Services and Recreation

Workers in Services and Recreation	Age under 21		Age 21 or over	
	No.	%	No.	%
Dance hostess / Prostitute	1	25.0	17	63.0
Waitress	2	50.0	5	18.5
Maid-servant	-	-	1	3.7
Massage girl	1	25.0	4	14.8
Total	4	100.0	27	100.0

Table 8 : Monthly Income

Income in Hong Kong Dollars	MALES				FEMALES				TOTAL			
	Age under 21		Age 21 or over		Age under 21		Age 21 or over		Age under 21		Age 21 or over	
	No.	%	No.	%	No.	%	No.	%	No.	%	No.	%
Nil	68	17.8	265	15.9	9	64.3	9	15.3	77	19.5	274	15.9
\$1 to less than \$100	1	0.3	1	0.1	-	-	-	-	1	0.3	1	0.1
\$100 to less than \$500	-	-	2	0.1	-	-	-	-	-	-	2	0.1
\$500 to less than \$1,000	2	0.5	1	0.1	-	-	-	-	2	0.5	1	0.1
\$1,000 to less than \$1,500	47	12.3	40	2.4	2	14.3	2	3.4	49	12.4	42	2.4
\$1,500 to less than \$2,000	149	39.1	236	14.2	-	-	15	25.4	149	37.7	251	14.6
\$2,000 to less than \$2,500	85	22.3	475	28.6	1	7.1	15	25.4	86	21.8	490	28.5
\$2,500 to less than \$3,000	8	2.1	165	9.9	-	-	4	6.8	8	2.0	169	9.8
\$3,000 and over	21	5.5	477	28.7	2	14.3	14	23.7	23	5.8	491	28.5
Total	381	100.0	1,662	100.0	14	100.0	59	100.0	395	100.0	1,721	100.0

Excluding Nil item: \bar{X}_M Age under 21 = \$1,925.1 \bar{X}_M Age 21 or over = \$2,532.0 \bar{X}_F Age under 21 = \$2,250.0 \bar{X}_F Age 21 or over = \$2,380.0

Including Nil item: \bar{X}_M Age under 21 = \$1,581.5 \bar{X}_M Age 21 or over = \$2,128.2 \bar{X}_F Age under 21 = \$803.6 \bar{X}_F Age 21 or over = \$2,016.9

Table 9 : Employment in the Illicit Drug Trade

Employed as	MALES				FEMALES				TOTAL			
	Age under 21		Age 21 or over		Age under 21		Age 21 or over		Age under 21		Age 21 or over	
	No.	%	No.	%	No.	%	No.	%	No.	%	No.	%
Not applicable	348	91.3	1,620	97.5	14	100.0	59	100.0	362	91.6	1,679	97.6
Manufacturer	-	-	-	-	-	-	-	-	-	-	-	-
Dealer	-	-	-	-	-	-	-	-	-	-	-	-
Importer	-	-	-	-	-	-	-	-	-	-	-	-
Seller	33	8.7	38	2.3	-	-	-	-	33	8.4	38	2.2
Trafficker	-	-	4	0.2	-	-	-	-	-	-	4	0.2
Divan keeper	-	-	-	-	-	-	-	-	-	-	-	-
Lookout	-	-	-	-	-	-	-	-	-	-	-	-
Total	381	100.0	1,662	100.0	14	100.0	59	100.0	395	100.0	1,721	100.0

Table 10 : Marital Status

Marital Status	MALES				FEMALES				TOTAL			
	Age under 21		Age 21 or over		Age under 21		Age 21 or over		Age under 21		Age 21 or over	
	No.	%	No.	%	No.	%	No.	%	No.	%	No.	%
Single	367	96.3	1,051	63.2	6	42.9	38	64.4	373	94.4	1,089	63.3
Cohabited	4	1.0	12	0.7	7	50.0	10	16.9	11	2.8	22	1.3
Married	10	2.6	463	27.9	1	7.1	6	10.2	11	2.8	469	27.3
Separated	-	-	41	2.5	-	-	2	3.4	-	-	43	2.5
Divorced	-	-	75	4.5	-	-	3	5.1	-	-	78	4.5
Widowed	-	-	20	1.2	-	-	-	-	-	-	20	1.2
Total	381	100.0	1,662	100.0	14	100.0	59	100.0	395	100.0	1,721	100.0

Table 11 : Living Arrangements

Living Arrangements	MALES				FEMALES				TOTAL			
	Age under 21		Age 21 or over		Age under 21		Age 21 or over		Age under 21		Age 21 or over	
	No.	%	No.	%	No.	%	No.	%	No.	%	No.	%
With both parents	251	65.9	456	27.4	6	42.9	20	33.9	257	65.1	476	27.7
With one parent	88	23.1	302	18.2	3	21.4	8	13.6	91	23.0	310	18.0
With spouse/children	8	2.1	247	14.9	5	35.7	10	16.9	13	3.3	257	14.9
With other relatives	19	5.0	110	6.6	-	-	5	8.5	19	4.8	115	6.7
With friends	8	2.1	180	10.8	-	-	3	5.1	8	2.0	183	10.6
Lives alone	3	0.8	242	14.6	-	-	8	13.6	3	0.8	250	14.5
In dormitory at place of work	2	0.5	1	0.1	-	-	-	-	2	0.5	1	0.1
No fixed place of abode	2	0.5	124	7.5	-	-	5	8.5	2	0.5	129	7.5
Total	381	100.0	1,662	100.0	14	100.0	59	100.0	395	100.0	1,721	100.0

Table 12 : Drug Dependents by their District of Residence

District	MALES				FEMALES				TOTAL			
	Age under 21		Age 21 or over		Age under 21		Age 21 or over		Age under 21		Age 21 or over	
	No.	%	No.	%	No.	%	No.	%	No.	%	No.	%
Hong Kong Island												
Sheung Wan & Western	4	1.0	40	2.4	-	-	1	1.7	4	1.0	41	2.4
Central	-	-	22	1.3	-	-	-	-	-	-	22	1.3
Wan Chai	10	2.6	72	4.3	-	-	2	3.4	10	2.5	74	4.3
Mid-level & Tai Hang	-	-	-	-	-	-	-	-	-	-	-	-
North Point	8	2.1	20	1.2	-	-	1	1.7	8	2.0	21	1.2
Shau Kei Wan	21	5.5	94	5.7	-	-	4	6.8	21	5.3	98	5.7
Aberdeen	18	4.7	47	2.8	-	-	2	3.4	18	4.6	49	2.8
Peak and South	2	0.5	3	0.2	-	-	1	1.7	2	0.5	4	0.2
Sub-total	63	16.5	298	17.9	-	-	11	18.6	63	15.9	309	18.0
Kowloon												
Tsim Sha Tsui	1	0.3	9	0.5	-	-	1	1.7	1	0.3	10	0.6
Yau Ma Tei and Mong Kok	9	2.4	203	12.2	1	7.1	3	5.1	10	2.5	206	12.0
Ho Man Tin	2	0.5	9	0.5	-	-	-	-	2	0.5	9	0.5
Hung Hom	7	1.8	39	2.3	-	-	1	1.7	7	1.8	40	2.3
Lai Chi Kok & Cheung Sha Wan	6	1.6	40	2.4	1	7.1	1	1.7	7	1.8	41	2.4
Shum Shui Po	24	6.3	189	11.4	1	7.1	11	18.6	25	6.3	200	11.6
Kowloon City	12	3.1	81	4.9	-	-	3	5.1	12	3.0	84	4.9
Wong Tai Sin	37	9.7	122	7.3	2	14.3	6	10.2	39	9.9	128	7.4
Kwun Tong	51	13.4	182	11.0	4	28.6	8	13.6	55	13.9	190	11.0
Sub-total	149	39.1	874	52.6	9	64.3	34	57.6	158	40.0	908	52.8
New Territories												
Tsuen Wan	86	22.6	228	13.7	1	7.1	9	15.3	87	22.0	237	13.8
Tuen Mun	10	2.6	36	2.2	1	7.1	-	-	11	2.8	36	2.1
Yuen Long	34	8.9	78	4.7	-	-	4	6.8	34	8.6	82	4.8
Sheung Shui	19	5.0	62	3.7	1	7.1	1	1.7	20	5.1	63	3.7
Tai Po	9	2.4	35	2.1	2	14.3	-	-	11	2.8	35	2.0
Sha Tin	11	2.9	51	3.1	-	-	-	-	11	2.8	51	3.0
Sai Kung & Outlying Islands	-	-	-	-	-	-	-	-	-	-	-	-
Sub-total	169	44.4	490	29.5	5	35.7	14	23.7	174	44.1	504	29.3
TOTAL	381	100.0	1,662	100.0	14	100.0	59	100.0	395	100.0	1,721	100.0

Table 13 : Types of Accommodation

Types of Accommodation	MALES				FEMALES				TOTAL			
	Age under 21		Age 21 or over		Age under 21		Age 21 or over		Age under 21		Age 21 or over	
	No.	%	No.	%	No.	%	No.	%	No.	%	No.	%
Government Public Housing	264	69.3	763	45.9	8	57.1	32	54.2	272	68.9	795	46.2
Private Housing - Whole flat occupied by one household	41	10.8	263	15.8	3	21.4	3	5.1	44	11.1	266	15.5
Private Housing - Flat occupied by two or more households	14	3.7	116	7.0	1	7.1	7	11.9	15	3.8	123	7.1
Temporary Housing	35	9.2	194	11.7	2	14.3	4	6.8	37	9.4	198	11.5
Others	27	7.1	326	19.6	-	-	13	22.0	27	6.8	339	19.7
Total	381	100.0	1,662	100.0	14	100.0	59	100.0	395	100.0	1,721	100.0

Table 14 : Causation Claimed

Causation	MALES				FEMALES				TOTAL			
	Age under 21		Age 21 or over		Age under 21		Age 21 or over		Age under 21		Age 21 or over	
	No.	%	No.	%	No.	%	No.	%	No.	%	No.	%
Cure for illness	5	1.3	40	2.4	2	14.3	1	1.7	7	1.8	41	2.4
Associated with other drugs dependents	249	65.4	815	49.0	5	35.7	26	44.1	254	64.3	841	48.9
Curiosity	119	31.2	751	45.2	7	50.0	30	50.8	126	31.9	781	45.4
To improve sexual capability	1	0.3	10	0.6	-	-	-	-	1	0.3	10	0.6
Long hours of work	3	0.8	20	1.2	-	-	-	-	3	0.8	20	1.2
Pleasure seeking	2	0.5	4	0.2	-	-	-	-	2	0.5	4	0.2
Depression	2	0.5	22	1.3	-	-	2	3.4	2	0.5	24	1.4
Total	381	100.0	1,662	100.0	14	100.0	59	100.0	395	100.0	1,721	100.0

Table 15 : Peer Association at First Intake of Drugs

Peer Association	MALES				FEMALES				TOTAL			
	Age under 21		Age 21 or over		Age under 21		Age 21 or over		Age under 21		Age 21 or over	
	No.	%	No.	%	No.	%	No.	%	No.	%	No.	%
Not in company	25	6.6	282	17.0	1	7.1	7	11.9	26	6.6	289	16.8
Friends of same sex	352	92.4	1,353	81.4	3	21.4	37	62.7	355	89.9	1,390	80.8
Friends of opposite sex	1	0.3	3	0.2	1	7.1	-	-	2	0.5	3	0.2
Friends of both sexes	2	0.5	6	0.4	6	42.9	6	10.2	8	2.0	12	0.7
Spouse/Lovers	1	0.3	10	0.6	1	7.1	5	8.5	2	0.5	15	0.9
Relatives	-	-	4	0.2	1	7.1	1	1.7	1	0.3	5	0.3
Workmates	-	-	4	0.2	1	7.1	3	5.1	1	0.3	7	0.4
Schoolmates	-	-	-	-	-	-	-	-	-	-	-	-
Total	381	100.0	1,662	100.0	14	100.0	59	100.0	395	100.0	1,721	100.0

Table 16 : Age at First Intake of Drugs

Age at First Intake of Drugs	MALES				FEMALES				TOTAL			
	Age under 21		Age 21 or over		Age under 21		Age 21 or over		Age under 21		Age 21 or over	
	No.	%	No.	%	No.	%	No.	%	No.	%	No.	%
Under 18	252	66.1	279	16.8	8	57.1	20	33.9	260	65.8	299	17.4
18 - 20	129	33.9	411	24.7	6	42.9	15	25.4	135	34.2	426	24.8
21 - 24	-	-	410	24.7	-	-	12	20.3	-	-	422	24.5
25 - 29	-	-	322	19.4	-	-	8	13.6	-	-	330	19.2
30 - 39	-	-	172	10.3	-	-	3	5.1	-	-	175	10.2
40 - 49	-	-	57	3.4	-	-	1	1.7	-	-	58	3.4
50 - 59	-	-	11	0.7	-	-	-	-	-	-	11	0.6
60 and over	-	-	-	-	-	-	-	-	-	-	-	-
Total	381	100.0	1,662	100.0	14	100.0	59	100.0	395	100.0	1,721	100.0

Table 17 : Drug Used Prior to Admission

Types of Drug	MALES				FEMALES				TOTAL			
	Age under 21		Age 21 or over		Age under 21		Age 21 or over		Age under 21		Age 21 or over	
	No.	%	No.	%	No.	%	No.	%	No.	%	No.	%
Heroin	379	99.5	1,650	99.3	10	71.4	58	98.3	389	98.5	1,708	99.2
Opium	-	-	8	0.5	-	-	-	-	-	-	8	0.5
Others	2	0.5	4	0.2	4	28.6	1	1.7	6	1.5	5	0.3
Total	381	100.0	1,662	100.0	14	100.0	59	100.0	395	100.0	1,721	100.0

Notes : Others include Morphine, Barbitone, L.S.D., Cannabis, Amphetamines, etc.

Table 18 : Method Used Prior to Admission

Method	MALES				FEMALES				TOTAL			
	Age under 21		Age 21 or over		Age under 21		Age 21 or over		Age under 21		Age 21 or over	
	No.	%	No.	%	No.	%	No.	%	No.	%	No.	%
Ack Ack	25	6.6	128	7.7	-	-	3	5.1	25	6.3	131	7.6
Chasing the dragon	173	45.4	739	44.5	9	64.3	19	32.2	182	46.1	758	44.0
Playing the mouth organ	17	4.5	1	0.1	-	-	-	-	17	4.3	1	0.1
Injection	164	43.0	784	47.2	1	7.1	37	62.7	165	41.8	821	47.7
Opium pipe	-	-	8	0.5	-	-	-	-	-	-	8	0.5
Oral	2	0.5	2	0.1	4	28.6	-	-	6	1.5	2	0.1
Total	381	100.0	1,662	100.0	14	100.0	59	100.0	395	100.0	1,721	100.0

Table 19 : Daily Cost of Drug

Daily Cost	MALES				FEMALES				TOTAL			
	Age under 21		Age 21 or over		Age under 21		Age 21 or over		Age under 21		Age 21 or over	
	No.	%	No.	%	No.	%	No.	%	No.	%	No.	%
Less than \$25	21	5.5	65	3.9	-	-	-	-	21	5.3	65	3.8
\$25 to less than \$50	97	25.5	691	41.6	4	28.6	20	33.9	101	25.6	711	41.3
\$50 to less than \$75	201	52.8	733	44.1	10	71.4	10	16.9	211	53.4	743	43.2
\$75 to less than \$100	62	16.3	98	5.9	-	-	10	16.9	62	15.7	108	6.3
\$100 to less than \$125	-	-	70	4.2	-	-	19	32.2	-	-	89	5.2
\$125 to less than \$150	-	-	5	0.3	-	-	-	-	-	-	5	0.3
\$150 to less than \$175	-	-	-	-	-	-	-	-	-	-	-	-
\$175 to less than \$200	-	-	-	-	-	-	-	-	-	-	-	-
\$200 to less than \$250	-	-	-	-	-	-	-	-	-	-	-	-
Total	381	100.0	1,662	100.0	14	100.0	59	100.0	395	100.0	1,721	100.0

Table 20 : Procurement of Drugs by District

District	MALES				FEMALES				TOTAL			
	Age under 21		Age 21 or over		Age under 21		Age 21 or over		Age under 21		Age 21 or over	
	No.	%	No.	%	No.	%	No.	%	No.	%	No.	%
Hong Kong Island												
Sheung Wan & Western	5	1.3	40	2.4	-	-	1	1.7	5	1.3	41	2.4
Central	-	-	21	1.3	-	-	-	-	-	-	21	1.2
Wan Chai	11	2.9	74	4.5	-	-	5	8.5	11	2.8	79	4.6
Mid-level & Tai Hang	-	-	-	-	-	-	-	-	-	-	-	-
North Point	9	2.4	21	1.3	-	-	-	-	9	2.3	21	1.2
Shau Kei Wan	21	5.5	92	5.5	-	-	3	5.1	21	5.3	95	5.5
Aberdeen	17	4.5	47	2.8	-	-	1	1.7	17	4.3	48	2.8
Peak and South	1	0.3	3	0.2	-	-	1	1.7	1	0.3	4	0.2
Sub-total	64	16.8	298	17.9	-	-	11	18.6	64	16.2	309	18.0
Kowloon												
Tsim Sha Tsui	1	0.3	8	0.5	-	-	1	1.7	1	0.3	9	0.5
Yau Ma Tei and Mong Kok	9	2.4	208	12.5	3	21.4	8	13.6	12	3.0	216	12.6
Ho Man Tin	1	0.3	10	0.6	-	-	-	-	1	0.3	10	0.6
Hung Hom	8	2.1	37	2.2	1	7.1	-	-	9	2.3	37	2.1
Lai Chi Kok & Cheung Sha Wan	7	1.8	39	2.3	1	7.1	1	1.7	8	2.0	40	2.3
Shum Shui Po	24	6.3	189	11.4	1	7.1	11	18.6	25	6.3	200	11.6
Kowloon City	15	3.9	82	4.9	1	7.1	2	3.4	16	4.1	84	4.9
Wong Tai Sin	37	9.7	120	7.2	1	7.1	4	6.8	38	9.6	124	7.2
Kwun Tong	48	12.6	182	11.0	5	35.7	8	13.6	53	13.4	190	11.0
Sub-total	150	39.4	875	52.6	13	92.9	35	59.3	163	41.3	910	52.9
New Territories												
Tsuen Wan	86	22.6	227	13.7	-	-	8	13.6	86	21.8	235	13.7
Tuen Mun	9	2.4	35	2.1	-	-	-	-	9	2.3	35	2.0
Yuen Long	34	8.9	78	4.7	-	-	4	6.8	34	8.6	82	4.8
Sheung Shui	19	5.0	61	3.7	1	7.1	1	1.7	20	5.1	62	3.6
Tai Po	8	2.1	38	2.3	-	-	-	-	8	2.0	38	2.2
Sha Tin	11	2.9	50	3.0	-	-	-	-	11	2.8	50	2.9
Sai Kung & Outlying Islands	-	-	-	-	-	-	-	-	-	-	-	-
Sub-total	167	43.8	489	29.4	1	7.1	13	22.0	168	42.5	502	29.2
TOTAL	381	100.0	1,662	100.0	14	100.0	59	100.0	395	100.0	1,721	100.0

Table 21 : Number of Years Dependent on Drugs

Number of Years	MALES				FEMALES				TOTAL			
	Age under 21		Age 21 or over		Age under 21		Age 21 or over		Age under 21		Age 21 or over	
	No.	%	No.	%	No.	%	No.	%	No.	%	No.	%
Less than 5 years	372	97.6	531	31.9	13	92.9	29	49.2	385	97.5	560	32.5
5 to less than 10 years	9	2.4	315	19.0	-	-	12	20.3	9	2.3	327	19.0
10 to less than 15 years	-	-	326	19.6	1	7.1	9	15.3	1	0.3	335	19.5
15 to less than 20 years	-	-	195	11.7	-	-	4	6.8	-	-	199	11.6
20 to less than 25 years	-	-	101	6.1	-	-	1	1.7	-	-	102	5.9
25 to less than 30 years	-	-	65	3.9	-	-	2	3.4	-	-	67	3.9
30 years and over	-	-	129	7.8	-	-	2	3.4	-	-	131	7.6
Total	381	100.0	1,662	100.0	14	100.0	59	100.0	395	100.0	1,721	100.0

\bar{X}_M Age under 21 = 2.6

\bar{X}_M Age 21 or over = 11.7

\bar{X}_F Age under 21 = 3.2

\bar{X}_F Age 21 or over = 8.3

Table 22 : Number of Previous Treatments for Drug Dependence

Number of Previous Treatments	MALES				FEMALES				TOTAL			
	Age under 21		Age 21 or over		Age under 21		Age 21 or over		Age under 21		Age 21 or over	
	No.	%	No.	%	No.	%	No.	%	No.	%	No.	%
Nil	312	81.9	973	58.5	13	92.9	44	74.6	325	82.3	1,017	59.1
1	54	14.2	421	25.3	1	7.1	11	18.6	55	13.9	432	25.1
2	9	2.4	142	8.5	-	-	4	6.8	9	2.3	146	8.5
3	3	0.8	65	3.9	-	-	-	-	3	0.8	65	3.8
4	1	0.3	29	1.7	-	-	-	-	1	0.3	29	1.7
5 and over	2	0.5	32	1.9	-	-	-	-	2	0.5	32	1.9
Total	381	100.0	1,662	100.0	14	100.0	59	100.0	395	100.0	1,721	100.0

Table 23 : Age at First Conviction

Age at First Conviction	MALES				FEMALES				TOTAL			
	Age under 21		Age 21 or over		Age under 21		Age 21 or over		Age under 21		Age 21 or over	
	No.	%	No.	%	No.	%	No.	%	No.	%	No.	%
Under 18	264	69.3	412	24.8	8	57.1	17	28.8	272	68.9	429	24.9
18 - 20	117	30.7	318	19.1	6	42.9	17	28.8	123	31.1	335	19.5
21 - 24	-	-	341	20.5	-	-	11	18.6	-	-	352	20.5
25 - 29	-	-	259	15.6	-	-	9	15.3	-	-	268	15.6
30 - 39	-	-	202	12.2	-	-	3	5.1	-	-	205	11.9
40 - 49	-	-	98	5.9	-	-	2	3.4	-	-	100	5.8
50 - 59	-	-	28	1.7	-	-	-	-	-	-	28	1.6
60 and over	-	-	4	0.2	-	-	-	-	-	-	4	0.2
Total	381	100.0	1,662	100.0	14	100.0	59	100.0	395	100.0	1,721	100.0

Table 24 : Type of First Offence

First Offence	MALES				FEMALES				TOTAL			
	Age under 21		Age 21 or over		Age under 21		Age 21 or over		Age under 21		Age 21 or over	
	No.	%	No.	%	No.	%	No.	%	No.	%	No.	%
Against lawful authority	12	3.1	155	9.3	-	-	3	5.1	12	3.0	158	9.2
Against public morality	4	1.0	11	0.7	-	-	-	-	4	1.0	11	0.6
Against the person	36	9.4	97	5.8	1	7.1	-	-	37	9.4	97	5.6
Against property	172	45.1	650	39.1	-	-	24	40.7	172	43.5	674	39.2
Against penal code	-	-	3	0.2	-	-	-	-	-	-	3	0.2
Against local laws	16	4.2	83	5.0	4	28.6	12	20.3	20	5.1	95	5.5
Narcotic offences	141	37.0	663	39.9	9	64.3	20	33.9	150	38.0	683	39.7
Total	381	100.0	1,662	100.0	14	100.0	59	100.0	395	100.0	1,721	100.0

Table 25 : Number of Previous Convictions

Number of Previous Convictions	MALES				FEMALES				TOTAL			
	Age under 21		Age 21 or over		Age under 21		Age 21 or over		Age under 21		Age 21 or over	
	No.	%	No.	%	No.	%	No.	%	No.	%	No.	%
Nil	139	36.5	164	9.9	5	35.7	10	16.9	144	36.5	174	10.1
1	108	28.3	160	9.6	6	42.9	6	10.2	114	28.9	166	9.6
2	80	21.0	251	15.1	3	21.4	11	18.6	83	21.0	262	15.2
3	33	8.7	192	11.6	-	-	12	20.3	33	8.4	204	11.9
4	12	3.1	141	8.5	-	-	4	6.8	12	3.0	145	8.4
5	5	1.3	133	8.0	-	-	3	5.1	5	1.3	136	7.9
6 - 9	4	1.0	305	18.4	-	-	5	8.5	4	1.0	310	18.0
10 - 14	-	-	156	9.4	-	-	2	3.4	-	-	158	9.2
15 - 19	-	-	62	3.7	-	-	1	1.7	-	-	63	3.7
20 and over	-	-	98	5.9	-	-	5	8.5	-	-	103	6.0
Total	381	100.0	1,662	100.0	14	100.0	59	100.0	395	100.0	1,721	100.0

Table 26 : Number of Previous Institutional Sentences

Number of Previous Institutional Sentences	MALES				FEMALES				TOTAL			
	Age under 21		Age 21 or over		Age under 21		Age 21 or over		Age under 21		Age 21 or over	
	No.	%	No.	%	No.	%	No.	%	No.	%	No.	%
Nil	271	71.1	351	21.1	10	71.4	22	37.3	281	71.1	373	21.7
1 - 5	110	28.9	960	57.8	4	28.6	32	54.2	114	28.9	992	57.6
6 - 10	-	-	213	12.8	-	-	4	6.8	-	-	217	12.6
11 - 15	-	-	66	4.0	-	-	1	1.7	-	-	67	3.9
16 - 20	-	-	42	2.5	-	-	-	-	-	-	42	2.4
Over 20	-	-	30	1.8	-	-	-	-	-	-	30	1.7
Total	381	100.0	1,662	100.0	14	100.0	59	100.0	395	100.0	1,721	100.0

Table 27 : Type of Present Offence

Present Offence	MALES				FEMALES				TOTAL			
	Age under 21		Age 21 or over		Age under 21		Age 21 or over		Age under 21		Age 21 or over	
	No.	%	No.	%	No.	%	No.	%	No.	%	No.	%
Against lawful authority	2	0.5	3	0.2	-	-	-	-	2	0.5	3	0.2
Against public morality	-	-	2	0.1	-	-	-	-	-	-	2	0.1
Against the person	4	1.0	3	0.2	-	-	-	-	4	1.0	3	0.2
Against property	108	28.3	250	15.0	2	14.3	9	15.3	110	27.8	259	15.0
Against penal code	-	-	1	0.1	-	-	-	-	-	-	1	0.1
Against local laws	4	1.0	2	0.1	-	-	-	-	4	1.0	2	0.1
Narcotic offences	263	69.0	1,401	84.3	12	85.7	50	84.7	275	69.6	1,451	84.3
Total	381	100.0	1,662	100.0	14	100.0	59	100.0	395	100.0	1,721	100.0

Table 28 : Gang Affiliation

Gang Affiliation	MALES				FEMALES				TOTAL			
	Age under 21		Age 21 or over		Age under 21		Age 21 or over		Age under 21		Age 21 or over	
	No.	%	No.	%	No.	%	No.	%	No.	%	No.	%
No affiliation	60	15.7	653	39.3	13	92.9	35	59.3	73	18.5	688	40.0
Affiliation	321	84.3	1,009	60.7	1	7.1	24	40.7	322	81.5	1,033	60.0
Total	381	100.0	1,662	100.0	14	100.0	59	100.0	395	100.0	1,721	100.0

END