

The author(s) shown below used Federal funds provided by the U.S. Department of Justice and prepared the following final report:

Document Title: Re-Engaging Youth in School: Evaluation of the Truancy Demonstration Project

Author(s): Krystina Finlay, Ph.D.

Document No.: 212158

Date Received: 8/2006

Award Number: 1999-MU-MU-0014

This report has not been published by the U.S. Department of Justice. To provide better customer service, NCJRS has made this Federally-funded grant final report available electronically in addition to traditional paper copies.

<p>Opinions or points of view expressed are those of the author(s) and do not necessarily reflect the official position or policies of the U.S. Department of Justice.</p>



NCSE | National Center for School Engagement

Re-Engaging Youth in School: Evaluation of the Truancy Reduction Demonstration Project

National Center for School Engagement

August 10, 2006

An initiative of the Colorado Foundation for Families and Children

303 E. 17th Avenue, Suite 400 Denver, CO 80203

303/837-8466

www.schoolengagement.org

Table of Contents

Introduction to Fact Sheets Page 2

Aggregated Seven Site Data..... Section 1

Contra Costa Section 2

Honolulu Section 3

Houston Section 4

Jacksonville Section 5

Seattle Section 6

Suffolk Section 7

Tacoma Section 8

Re-Engaging Youth in School: Evaluation of the Truancy Demonstration Project

Introduction

The following data reflect all seven demonstration sites in the Office of Juvenile Justice and Delinquency Prevention Truancy Prevention project. These sites are located in Suffolk County, New York; Contra Costa, California; Tacoma and Seattle, Washington; Houston, Texas; Honolulu, Hawaii; and Jacksonville, Florida. The purpose of collecting these data was to identify the intervention population and track truant students' progress. The first set of tables is the aggregate of these seven sites from the projects inception to July 21, 2006. Following these data are the individual site reports.

This report includes the following information:

- Students Served
- Ethnicity of Students
- Grades of Students
- Age of Students
- Gender of Students
- IEP status
- Discipline Problems
- Involvement with Juvenile Justice
- Primary Care Giver
- Income Eligibility Status
- Students who live in home with only one adult
- Students who have no working adult in the home
- Average Number of children in the home
- Unexcused Absences over Time
- Excused Absences over Time
- Tardies over Time
- Days of In-School Suspensions
- Days of Out-of-School Suspensions
- Overall Academic Performance (over time)

Summary of Findings

Students Served

There were 634 students served in the seven demonstration sites from the time of inception through July 2006. Jacksonville served the most students (172). The average amount of students served was 91. The table below shows the last intake and last exit dates for each site:

Site	Last Intake Date	Last Exit Date
Contra Costa	2/6/2004	6/11/2004
Honolulu	8/29/2003	2/16/2005
Houston	4/4/2006	7/3/2006
Jacksonville	5/12/2005	3/28/2006
Seattle	2/17/2004	7/21/2003
Suffolk County	5/12/2004	6/24/2005
Tacoma	9/10/2004	9/10/2004

Ethnicity¹

Across all sites, the ethnicity of students is a relatively good mix of White/Caucasian, Black/African-American and Latino/Hispanic. There are less Asian/Pacific Islanders and almost no representation of Native Americans. Also, a large category consists of “Other” which can include any combination of any ethnicity. This almost equitable mix is a result of where the seven sites are located. The majority of students served in Seattle are White, whereas Tacoma served a larger proportion of African-Americans. In addition, Jacksonville and Suffolk counties served approximately equal numbers of African-American and White students. Houston served a primarily Hispanic population, and Honolulu was mostly “Other”, which in this case was mostly native Hawaiian and part-Hawaiian. Honolulu also served the majority of the Asian/Pacific students across the seven sites.

Grade and Age

Although all grades K-12 are served in the project, the majority of students represented in these data are in the first and ninth grades. Correspondingly, the majority of students served are ages six to seven and thirteen to sixteen. This is largely due to the focus on elementary students in Jacksonville and Honolulu and upper middle and high school in Houston and Seattle.

Gender

In general, girls were served slightly more than boys (52% vs. 48%). Suffolk County served the largest percentage of males (74%) and Houston served the largest percentages of females (60%).

Families

Approximately 70% of truant students’ primary caregivers included mothers². Approximately 15% of case managers said that “both parents” were primary caregivers. Some caseworkers checked “mother” and “father” as separate caregivers; this may indicate that although some parents were not living in the same household, they were sharing parental duties equally. In addition, 36% of students were living with only one adult and approximately 20% had no working adults in the home.

The majority of children were eligible for free or reduced lunches. Of the 634 students whose information was entered, only 85 (13%) paid a full price lunch at school. Proportionately, the majority of students who paid full price lunches were in Contra Costa, Suffolk County and Seattle. Although Seattle had the highest proportion of students living with only one adult (49%), Jacksonville had the second highest proportion (42%) and the highest proportion of unemployment.

There were an average number of three children living in the home. However, not all children were siblings; in some cases multiple nuclear families were located in a single dwelling.

Discipline

Across the sites, approximately 15% of children had some sort of discipline problem and 13% had already been involved with the juvenile justice system. Sites that served younger students had fewer discipline issues. At the beginning of interventions the range of in-school suspensions (ISS) was much higher than three, six, and nine months following. However, out-of-school suspensions (OSS) did not have a similar pattern; these did not change significantly across time. Nevertheless,

¹ The ethnicity category “Other” can include any racial or ethnic mix or race or ethnicity that is not included in the database.

² This total adds up to more than the total number of students because a single primary caregiver could not always be identified. That is, it was possible to list *more than one* primary caregiver in the database.

the numbers of children who actually had out-of-school suspensions was very low.

Academics

Approximately 19% of students had Individualized Education Programs (IEPs). The sites that had the majority of these students were from Jacksonville, Tacoma, and Seattle. The lowest proportions of students to have IEPs were in Houston and Honolulu.

In addition, across the sites, more students improved in their overall academic achievement compared to those who did not change or whose grades worsened. The exceptions to this were in Jacksonville and Suffolk County which remained the same at Update 2 and 3, and in Tacoma which stayed the same at Update 1.

Attendance

The overarching goal of truancy prevention is obviously to improve attendance and this effort was successful. In general, while excused daily absences did not change appreciably, unexcused daily absences fell dramatically and tardies declined. Period absences did not change linearly and therefore a meaningful trend isn't apparent.

Of the sites that reported enough update data, the most successful sites were Jacksonville and Honolulu. These sites primarily targeted parents because the target student population were elementary students.

All sites had less information for students across time. One reason for this may be that students who no longer needed intervention were no longer tracked. Thus, reported improvements may actually be smaller than what actually occurred³. For instance, in Tacoma, the site that showed no improvement in unexcused absences, there were 71 total kids entered at intake, only 49 three months later, and only 14 nine months later. It is likely that at least some of the students who were not followed improved their attendance and no longer needed services. This same pattern is true for Contra Costa as well, however, the drop in number of students was only a little more than half nine months later (i.e., 50 at intake to 21, nine months later).

Conclusion

Overall, sites achieved what they intended given that they all worked with at risk families and children. Jacksonville, in particular, was extremely successful given that their population was largely African-American, poor, and had the highest number of unemployed families. They made excellent improvement in attendance and achievement. Because three sites reported on less than 75 students, it is possible that success was greater in these programs than the current data suggest, assuming they served more students than were reported. In general, the elementary-level truancy issues may be easier to deal with because the children are not "deep-end" yet and the parents are the primary focus. Older truants are likely to have more challenges and thus may require more intensive services.

³ It is impossible to actually know what happened to the students whose information is not updated. Consequently, although students may have improved, it is also possible that these students dropped out of school or failed to continue in the intervention for other reasons.

Section 1

TRAIN Fact Sheet

Aggregated 7 Site Data

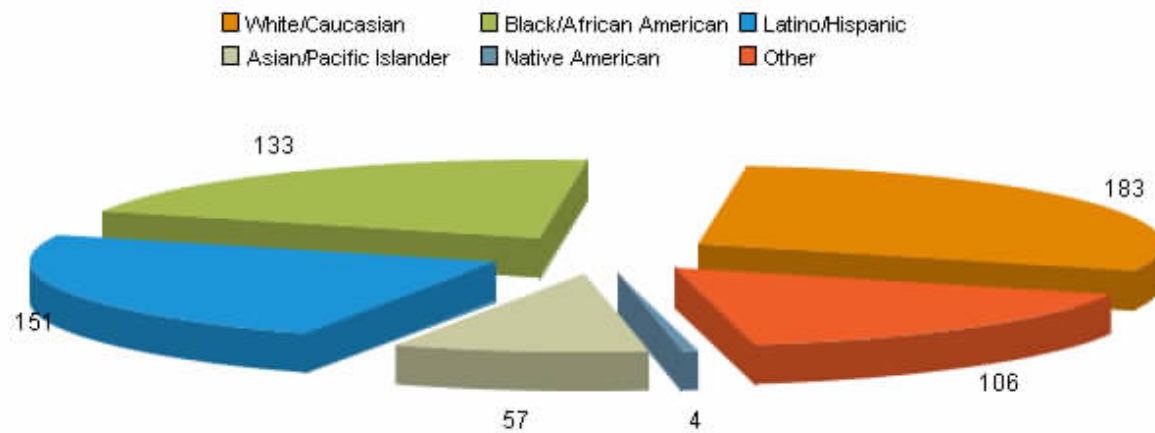
TRAIN Fact Sheet

Aggregated 7 Site Data:

Contra Costa, Honolulu, Houston, Jacksonville, Seattle, Suffolk County, Tacoma Reflecting Data from January 1, 1999 - July 21, 2006

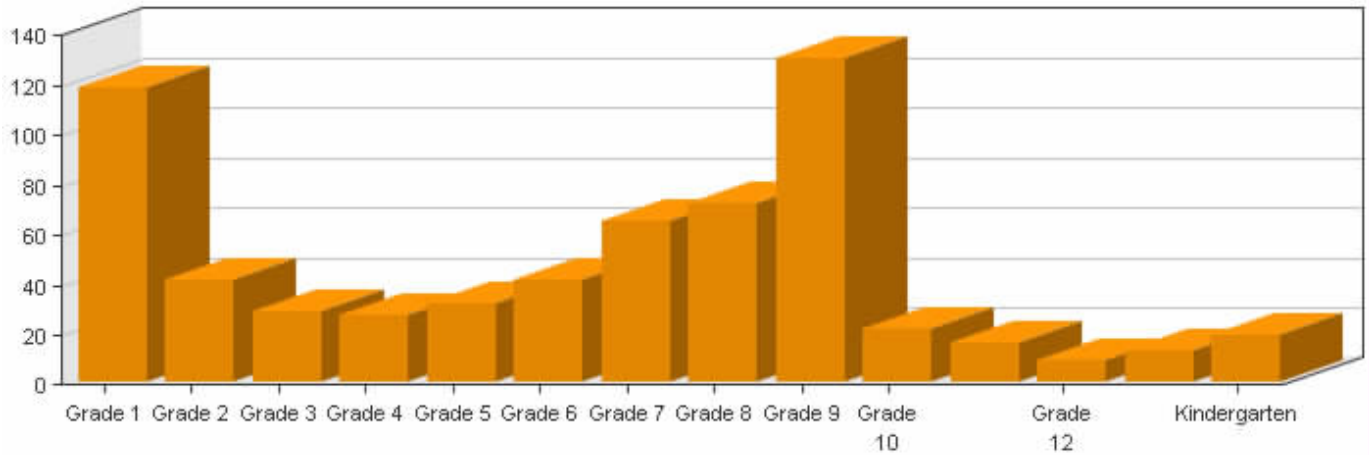
Number of Students in the Database: 634

Aggregated 7 Site Data - Ethnicity of Students



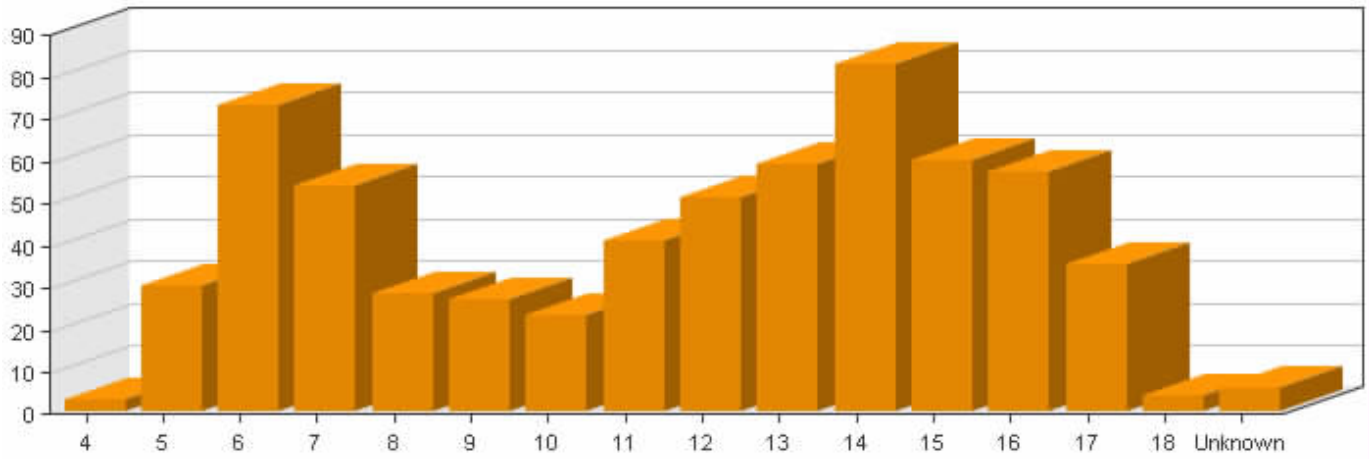
Ethnicity	Number	Percentage
White/Caucasian	183	28.9%
Black/African American	133	21.0%
Latino/Hispanic	151	23.8%
Asian/Pacific Islander	57	9.0%
Native American	4	0.6%
Other	106	16.7%

Aggregated 7 Site Data - Grades of Students



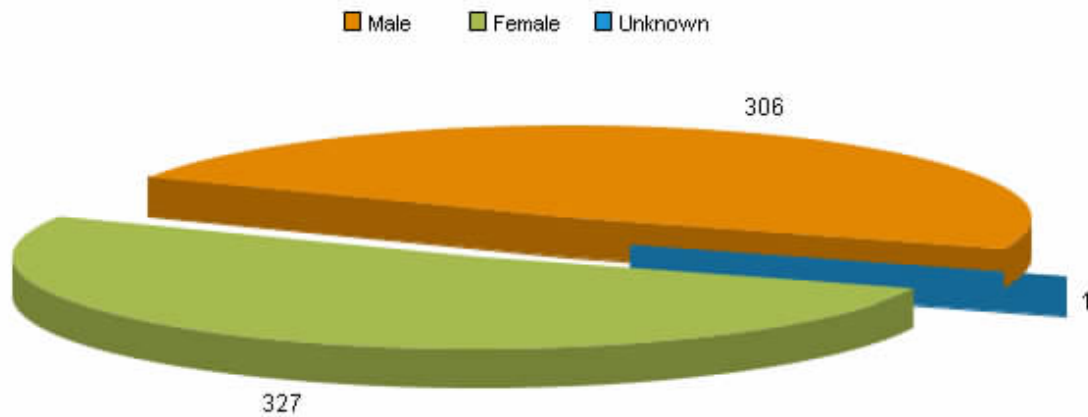
Grade	Number	Percentage
Grade 1	118	18.6%
Grade 2	41	6.5%
Grade 3	29	4.6%
Grade 4	27	4.3%
Grade 5	32	5.0%
Grade 6	41	6.5%
Grade 7	65	10.3%
Grade 8	72	11.4%
Grade 9	130	20.5%
Grade 10	22	3.5%
Grade 11	16	2.5%
Grade 12	9	1.4%
Grade Unknown	13	2.1%
Kindergarten	19	3.0%

Aggregated 7 Site Data - Age of Students



Age	Number	Percentage
4	3	0.5%
5	30	4.7%
6	73	11.5%
7	54	8.5%
8	28	4.4%
9	27	4.3%
10	23	3.6%
11	41	6.5%
12	51	8.0%
13	59	9.3%
14	83	13.1%
15	60	9.5%
16	57	9.0%
17	35	5.5%
18	4	0.6%
Unknown	6	0.9%

Aggregated 7 Site Data - Gender of Students



Gender	Number	Percentage
Male	306	48.3%
Female	327	51.6%
Unknown	1	0.2%

Aggregated 7 Site Data - Education and Discipline Status

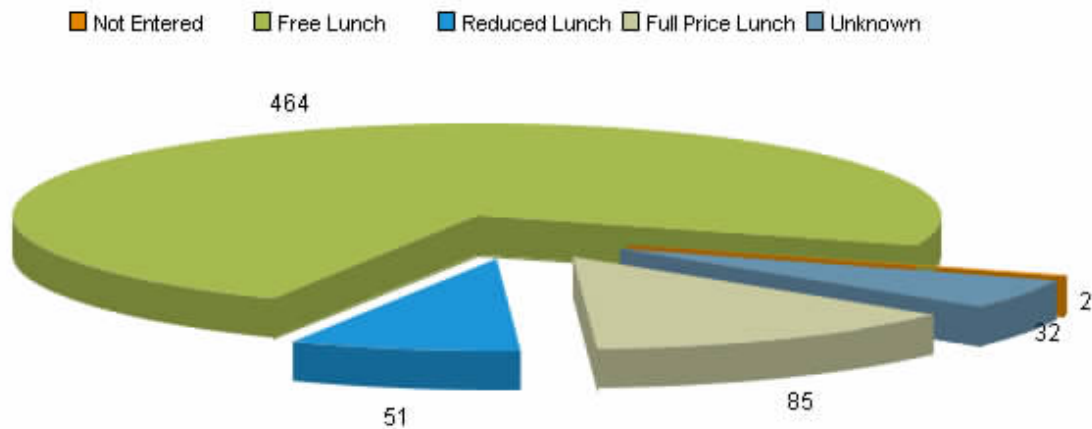
Students with:	Number	Percentage
IEP at intake	119	18.8%
Discipline Problems at Intake	97	15.3%
Involvement with the Juvenile Justice System at intake	85	13.4%

Family Situation:

Aggregated 7 Site Data - Primary Care Giver

Family Member	Number
Not Entered	331
Foster Family	7
Two Parents	95
Mother	439
Father	112
Sibling	8
Other	12
Adoptive Family	1
Aunt/Uncle	15
Grandparent(s)	21

Aggregated 7 Site Data - Income Eligibility Status



Status	Number	Percentage
Not Entered	2	0.3%
Free Lunch	464	73.2%
Reduced Lunch	51	8.0%
Full Price Lunch	85	13.4%
Unknown	32	5.0%

Aggregated 7 Site Data - Family Status

Students who live in home with only one adult	226	35.6%
Students who had no working adults in the home	128	20.2%
Average number of children in the home (excluding student)	3.1	N/A

Information Over Time:

Aggregated 7 Site Data – Unexcused Absences

Intake Unexcused Absences	Days	Periods
Average #	12	17
Range	0-150	0-33
Number of Cases	394	12

Update 1 Unexcused Absences	Days	Periods
Average #	6.7	17.2
Range	0-65	0-61
Number of Cases	297	20

Update 2 Unexcused Absences	Days	Periods
Average #	5.6	8.9
Range	0-60	0-36
Number of Cases	229	23

Update 3 Unexcused Absences	Days	Periods
Average #	5.2	30.5
Range	0-69	0-87
Number of Cases	122	15

Aggregated 7 Site Data – Excused Absences

Intake Excused Absences	Days	Periods
Average #	4	1
Range	0-39	0-5
Number of Cases	395	12

Update 1 Excused Absences	Days	Periods
Average #	3.6	9.6
Range	0-42	0-49
Number of Cases	298	19

Update 2 Excused Absences	Days	Periods
Average #	3.9	6.8
Range	0-40	0-53
Number of Cases	231	23

Update 3 Excused Absences	Days	Periods
Average #	3.15	5.27
Range	0-37	0-20
Number of Cases	124	15

Aggregated 7 Site Data - Tardies

Tardies	Intake	Update 1	Update 2	Update 3
Average #	7.8	6.4	6.4	5.3
Range	0 - 82	0 - 66	0 - 55	0 - 53
Number of Cases	634	474	315	166

Aggregated 7 Site Data - Days of In School Suspension (ISS)

Days of ISS	Intake	Update 1	Update 2	Update 3
Average #	0.4	0.2	0.2	0.3
Range	0 - 50	0 - 9	0 - 6	0 - 11
Number of Cases	634	474	315	166

Aggregated 7 Site Data - Days of Out of School Suspension (OSS)

Days of OSS	Intake	Update 1	Update 2	Update 3
Average #	0.4	0.3	0.5	0.5
Range	0 - 20	0 - 10	0 - 31	0 - 11
Number of Cases	634	474	315	166

Aggregated 7 Site Data - Overall Academic Performance

	Update 1		Update 2		Update 3	
	Number	Percent	Number	Percent	Number	Percent
Improved	195	41.1%	108	34.3%	66	39.8%
Same	142	30.0%	86	27.3%	43	25.9%
Worsened	68	14.3%	76	24.1%	35	21.1%
Not Collected	69	14.6%	45	14.3%	22	13.3%
Total	474	100.0%	315	100.0%	166	100.0%

Section 2

TRAIN Fact Sheet

Contra Costa

TRAIN Fact Sheet

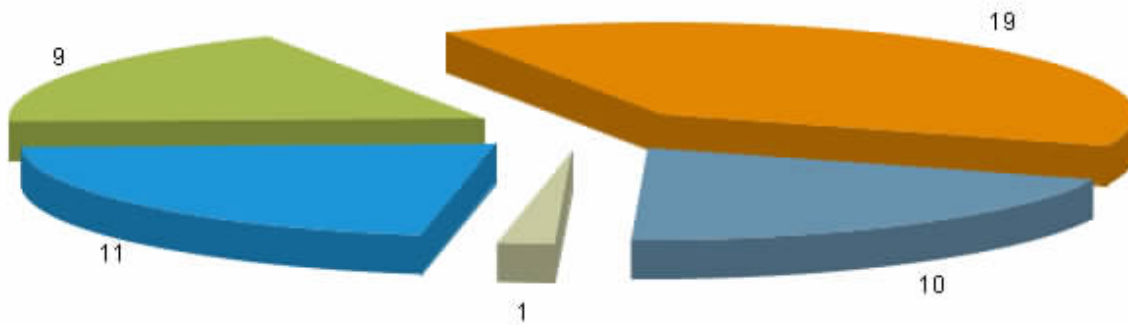
Contra Costa

Reflecting Data from January 1, 1999 - July 21, 2006

Number of Students in the Database: 50

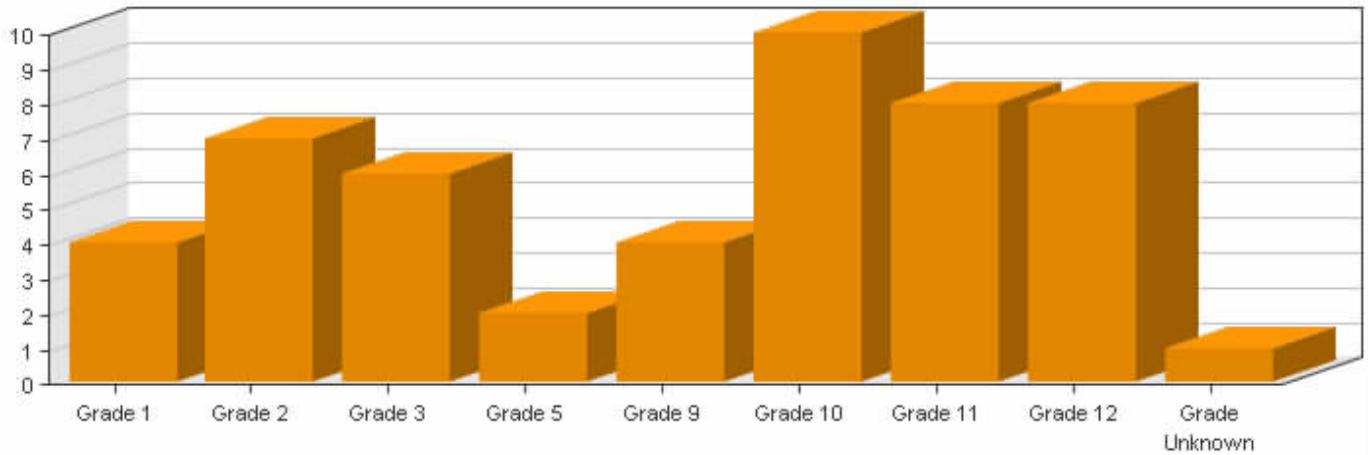
Contra Costa Site Data - Ethnicity of Students

White/Caucasian Black/African American Latino/Hispanic Asian/Pacific Islander Other



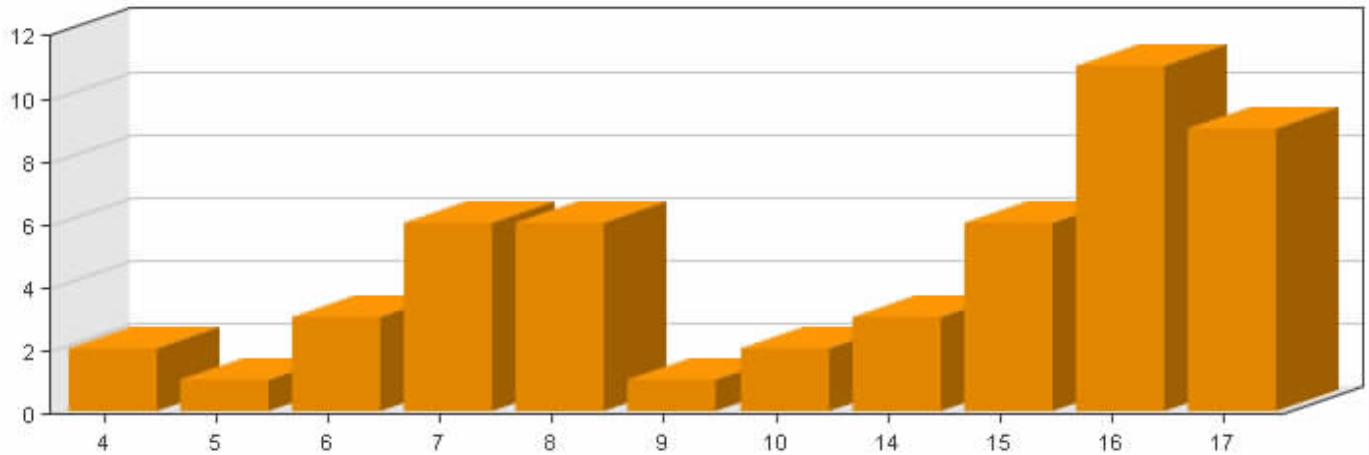
Ethnicity	Number	Percentage
White/Caucasian	19	38.0%
Black/African American	9	18.0%
Latino/Hispanic	11	22.0%
Asian/Pacific Islander	1	2.0%
Other	10	20.0%

Contra Costa Site Data - Grades of Students



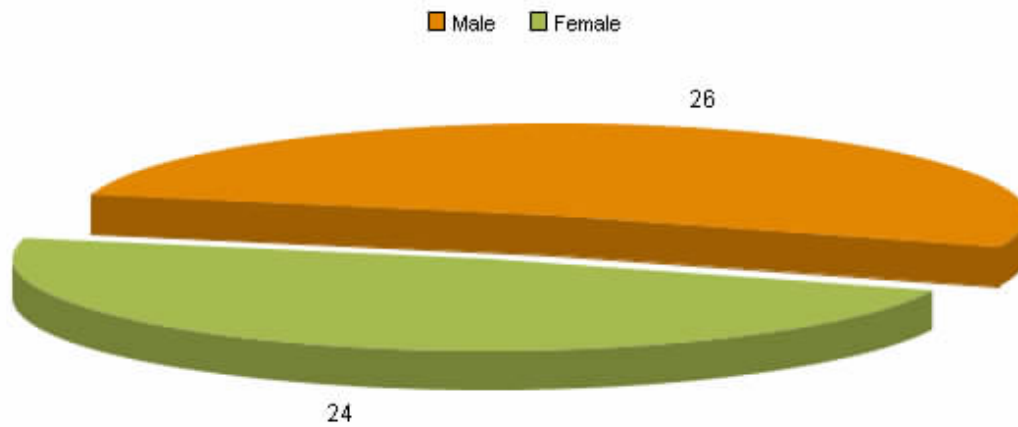
Grade	Number	Percentage
Grade 1	4	8.0%
Grade 2	7	14.0%
Grade 3	6	12.0%
Grade 5	2	4.0%
Grade 9	4	8.0%
Grade 10	10	20.0%
Grade 11	8	16.0%
Grade 12	8	16.0%
Grade Unknown	1	2.0%

Contra Costa Site Data - Age of Students



Age	Number	Percentage
4	2	4.0%
5	1	2.0%
6	3	6.0%
7	6	12.0%
8	6	12.0%
9	1	2.0%
10	2	4.0%
14	3	6.0%
15	6	12.0%
16	11	22.0%
17	9	18.0%

Contra Costa Site Data - Gender of Students



Gender	Number	Percentage
Male	26	52.0%
Female	24	48.0%

Contra Costa Site Data - Education and Discipline Status

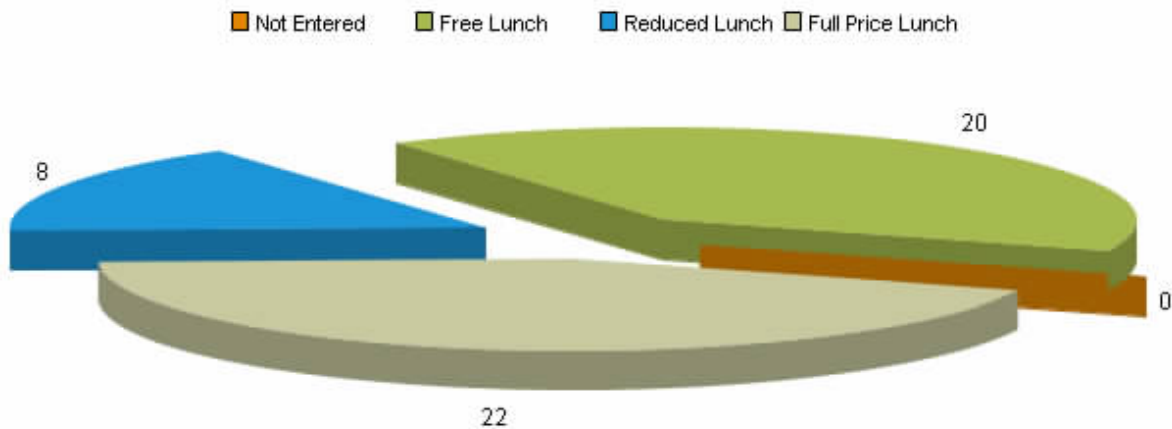
Students with:	Number	Percentage
IEP at intake	6	12.0%
Discipline Problems at Intake	5	10.0%
Involvement with the Juvenile Justice System at intake	5	10.0%

Family Situation:

Contra Costa Site Data - Primary Care Giver

Family Member	Number
Not Entered	15
Two Parents	7
Mother	29
Father	13
Other	3
Grandparent(s)	3

Contra Costa Site Data - Income Eligibility Status



Status	Number	Percentage
Not Entered	0	0.0%
Free Lunch	20	40.0%
Reduced Lunch	8	16.0%
Full Price Lunch	22	44.0%

Contra Costa Site Data - Family Status

Students who live in home with only one adult	16	32.0%
Students who had no working adults in the home	11	22.0%
Average number of children in the home (excluding student)	2.8	N/A

Information Over Time:

Contra Costa Site Data – Unexcused Absences

Intake Unexcused Absences	Days	Periods
Average #	8	15
Range	0-30	0-24
Number of Cases	13	4

Update 1 Unexcused Absences	Days	Periods
Average #	3.6	23.2
Range	0-6	0-61
Number of Cases	5	9

Update 2 Unexcused Absences	Days	Periods
Average #	3.4	8.5
Range	0-17	0-36
Number of Cases	18	16

Update 3 Unexcused Absences	Days	Periods
Average #	5.5	30.5
Range	0-10	0-87
Number of Cases	6	15

Contra Costa Site Data – Excused Absences

Intake Excused Absences	Days	Periods
Average #	2.0	3
Range	0-6	0-5
Number of Cases	13	4

Update 1 Excused Absences	Days	Periods
Average #	1.2	16.8
Range	0-2	0-49
Number of Cases	5	9

Update 2 Excused Absences	Days	Periods
Average #	2.9	6.1
Range	0-17	0-30
Number of Cases	18	16

Update 3 Excused Absences	Days	Periods
Average #	5.17	5.27
Range	0-17	0-20
Number of Cases	6	15

Contra Costa Site Data - Tardies

Tardies	Intake	Update 1	Update 2	Update 3
Average #	6.9	14.4	13.5	16.5
Range	0 - 52	0 - 66	0 - 51	0 - 53
Number of Cases	50	46	38	21

Contra Costa Site Data - Days of In School Suspension (ISS)

Days of ISS	Intake	Update 1	Update 2	Update 3
Average #	0.0	0.0	0.2	0.2
Range	0 - 1	0 - 1	0 - 3	0 - 2
Number of Cases	50	46	38	21

Contra Costa Site Data - Days of Out of School Suspension (OSS)

Days of OSS	Intake	Update 1	Update 2	Update 3
Average #	0.0	0.1	0.3	0.3
Range	0 - 1	0 - 3	0 - 3	0 - 3
Number of Cases	50	46	38	21

Contra Costa Site Data - Overall Academic Performance

	Update 1		Update 2		Update 3	
	Number	Percent	Number	Percent	Number	Percent
Improved	21	45.7%	16	42.1%	11	52.4%
Same	18	39.1%	9	23.7%	2	9.5%
Worsened	7	15.2%	13	34.2%	8	38.1%
Not Collected	0	0.0%	0	0.0%	0	0.0%
Total	46	100.0%	38	100.0%	21	100.0%

Section 3

TRAIN Fact Sheet

Honolulu

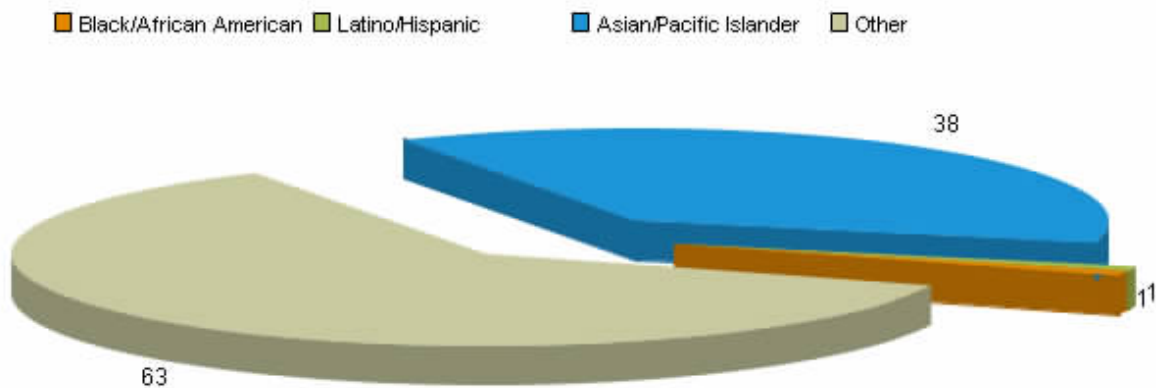
TRAIN Fact Sheet

Honolulu

Reflecting Data from January 1, 1999 - July 21, 2006

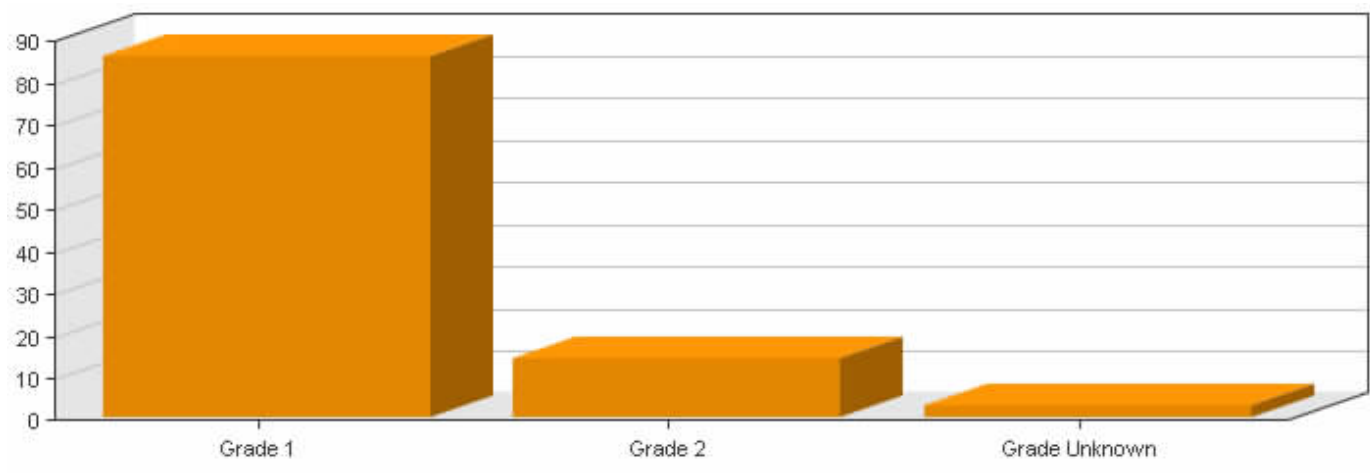
Number of Students in the Database: 103

Honolulu Site Data - Ethnicity of Students



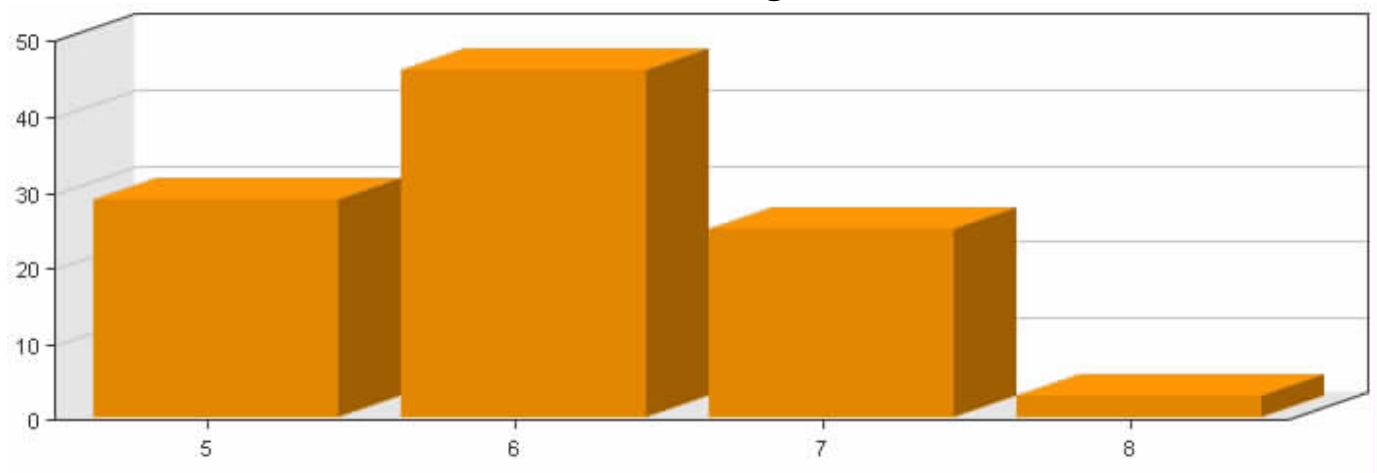
Ethnicity	Number	Percentage
Black/African American	1	1.0%
Latino/Hispanic	1	1.0%
Asian/Pacific Islander	38	36.9%
Other	63	61.2%

Honolulu Site Data - Grades of Students



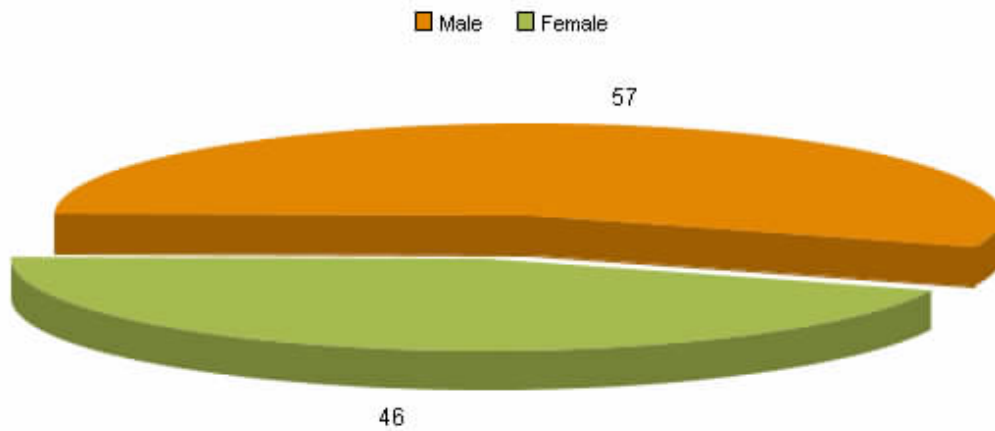
Grade	Number	Percentage
Grade 1	86	83.5%
Grade 2	14	13.6%
Grade Unknown	3	2.9%

Honolulu Site Data - Age of Students



Age	Number	Percentage
5	29	28.2%
6	46	44.7%
7	25	24.3%
8	3	2.9%

Honolulu Site Data - Gender of Students



Gender	Number	Percentage
Male	57	55.3%
Female	46	44.7%

Honolulu Site Data - Education and Discipline Status

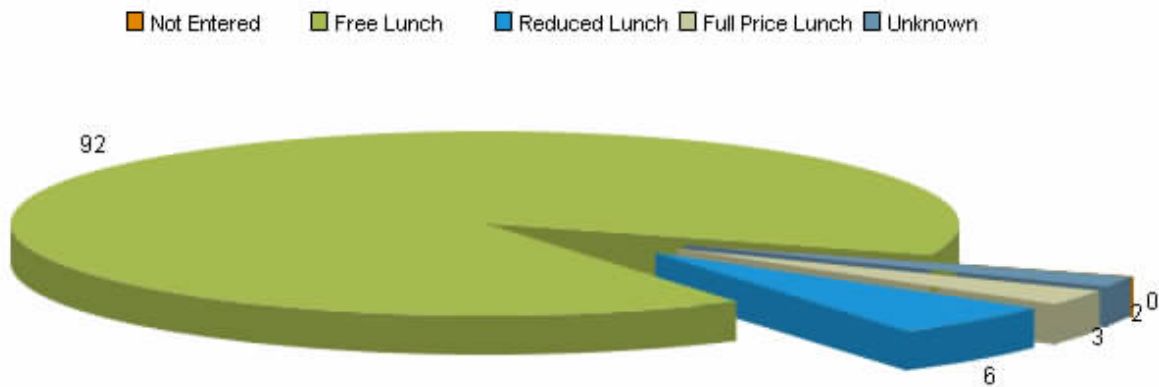
Students with:	Number	Percentage
IEP at intake	7	6.8%
Discipline Problems at Intake		0%
Involvement with the Juvenile Justice System at intake		0%

Family Situation:

Honolulu Site Data - Primary Care Giver

Family Member	Number
Not Entered	38
Foster Family	1
Two Parents	46
Mother	47
Father	20
Aunt/Uncle	7

Honolulu Site Data - Income Eligibility Status



Status	Number	Percentage
Not Entered	0	0.0%
Free Lunch	92	89.3%
Reduced Lunch	6	5.8%
Full Price Lunch	3	2.9%
Unknown	2	1.9%

Honolulu Site Data - Family Status

Students who live in home with only one adult	29	28.2%
Students who had no working adults in the home	21	20.4%
Average number of children in the home (excluding student)	3.8	N/A

Information Over Time:

Honolulu Site Data – Unexcused Absences

Intake Unexcused Absences	Days	Periods
Average #	23	0
Range	0-54	0-0
Number of Cases	37	0

Update 1 Unexcused Absences	Days	Periods
Average #	7.9	0
Range	0-29	0-0
Number of Cases	49	0

Update 2 Unexcused Absences	Days	Periods
Average #	5.1	0
Range	0-26	0-0
Number of Cases	68	0

Update 3 Unexcused Absences	Days	Periods
Average #	4.1	0
Range	0-22	0-0
Number of Cases	63	0

Honolulu Site Data – Excused Absences

Intake Excused Absences	Days	Periods
Average #	7.0	0
Range	0-39	0-0
Number of Cases	38	0

Update 1 Excused Absences	Days	Periods
Average #	2.4	0
Range	0-10	0-0
Number of Cases	49	0

Update 2 Excused Absences	Days	Periods
Average #	2.1	0
Range	0-14	0-0
Number of Cases	69	0

Update 3 Excused Absences	Days	Periods
Average #	1.67	0
Range	0-15	0-0
Number of Cases	64	0

Honolulu Site Data - Tardies

Tardies	Intake	Update 1	Update 2	Update 3
Average #	15.9	4.9	4.1	3.4
Range	0 - 82	0 - 25	0 - 20	0 - 17
Number of Cases	103	79	70	64

Honolulu Site Data - Days of In School Suspension (ISS)

Days of ISS	Intake	Update 1	Update 2	Update 3
Average #	0.0	0.0	0.0	0.2
Range	0 - 0	0 - 0	0 - 3	0 - 11
Number of Cases	103	79	70	64

Honolulu Site Data - Days of Out of School Suspension (OSS)

Days of OSS	Intake	Update 1	Update 2	Update 3
Average #	0.0	0.0	0.0	0.0
Range	0 - 0	0 - 0	0 - 0	0 - 0
Number of Cases	103	79	70	64

Honolulu Site Data - Overall Academic Performance

	Update 1		Update 2		Update 3	
	Number	Percent	Number	Percent	Number	Percent
Improved	37	46.8%	28	40.0%	30	46.9%
Same	13	16.5%	6	8.6%	7	10.9%
Worsened	1	1.3%	1	1.4%	6	9.4%
Not Collected	28	35.4%	35	50.0%	21	32.8%
Total	79	100.0%	70	100.0%	64	100.0%

Section 4

TRAIN Fact Sheet

Houston

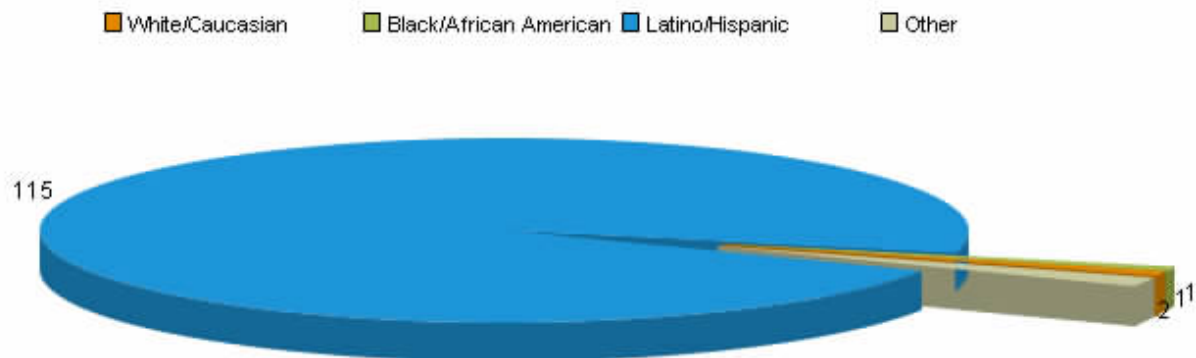
TRAIN Fact Sheet

Houston

Reflecting Data from January 1, 1999 - July 21, 2006

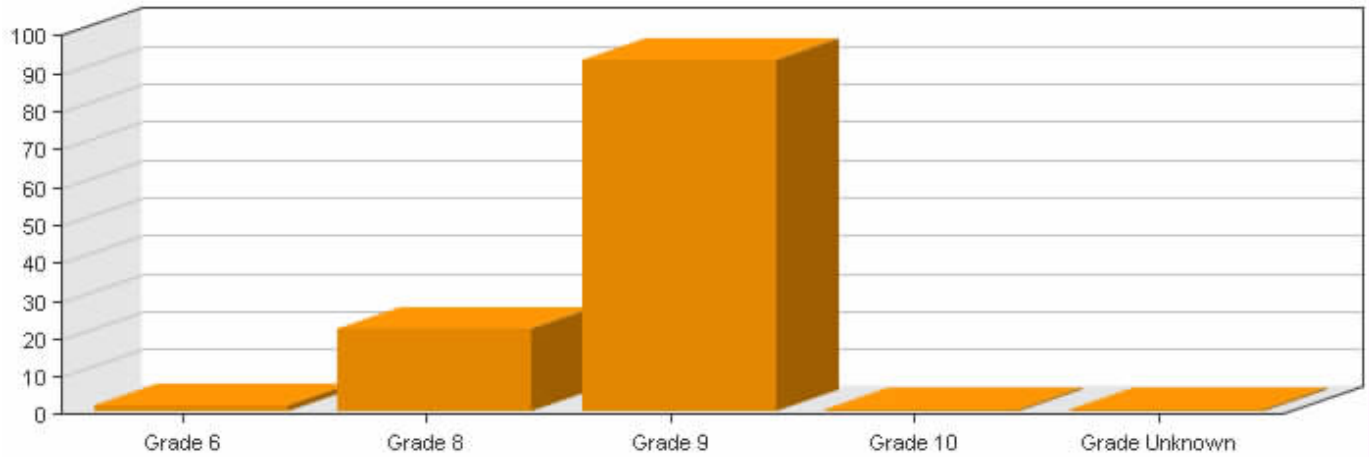
Number of Students in the Database: 119

Houston Site Data - Ethnicity of Students



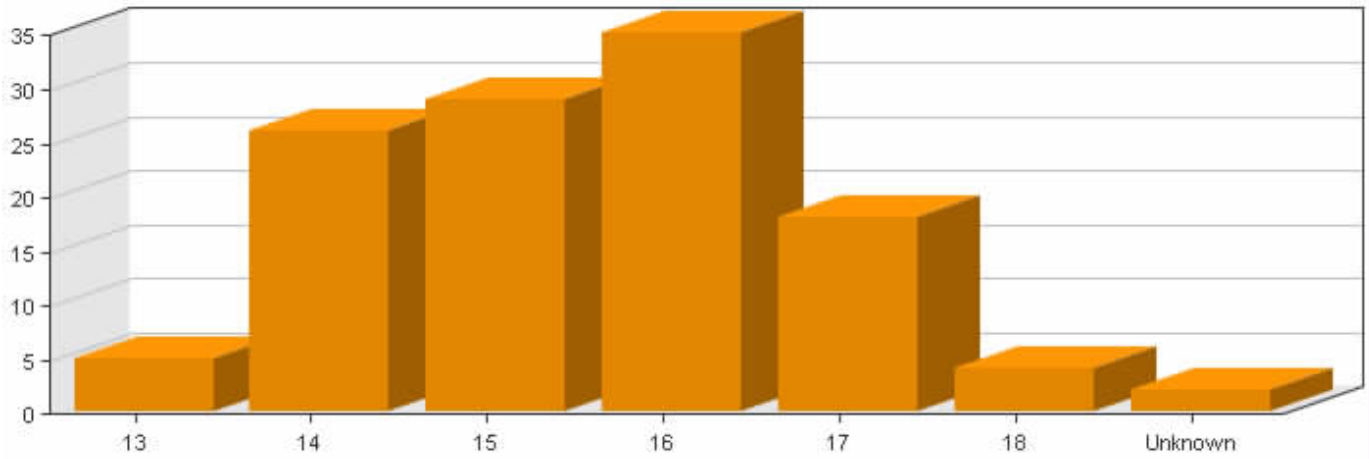
Ethnicity	Number	Percentage
White/Caucasian	1	0.8%
Black/African American	1	0.8%
Latino/Hispanic	115	96.6%
Other	2	1.7%

Houston Site Data - Grades of Students



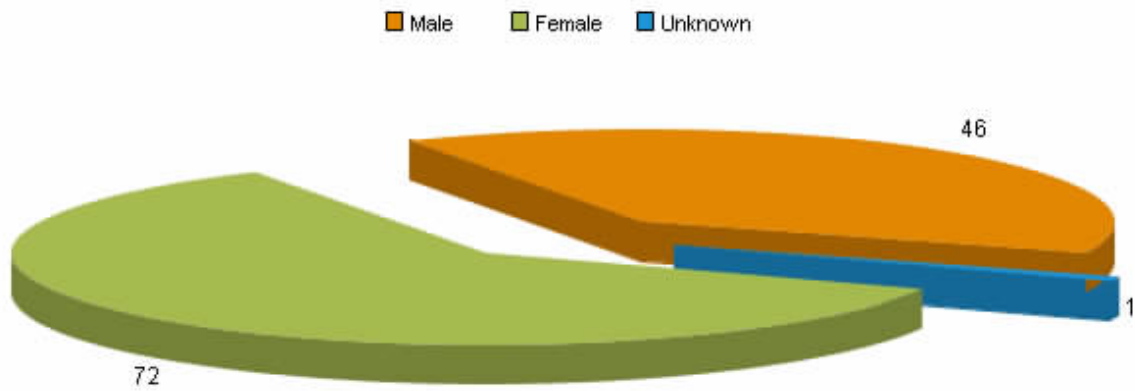
Grade	Number	Percentage
Grade 6	2	1.7%
Grade 8	22	18.5%
Grade 9	93	78.2%
Grade 10	1	0.8%
Grade Unknown	1	0.8%

Houston Site Data - Age of Students



Age	Number	Percentage
13	5	4.2%
14	26	21.8%
15	29	24.4%
16	35	29.4%
17	18	15.1%
18	4	3.4%
Unknown	2	1.7%

Houston Site Data - Gender of Students



Gender	Number	Percentage
Male	46	38.7%
Female	72	60.5%
Unknown	1	0.8%

Houston Site Data - Education and Discipline Status

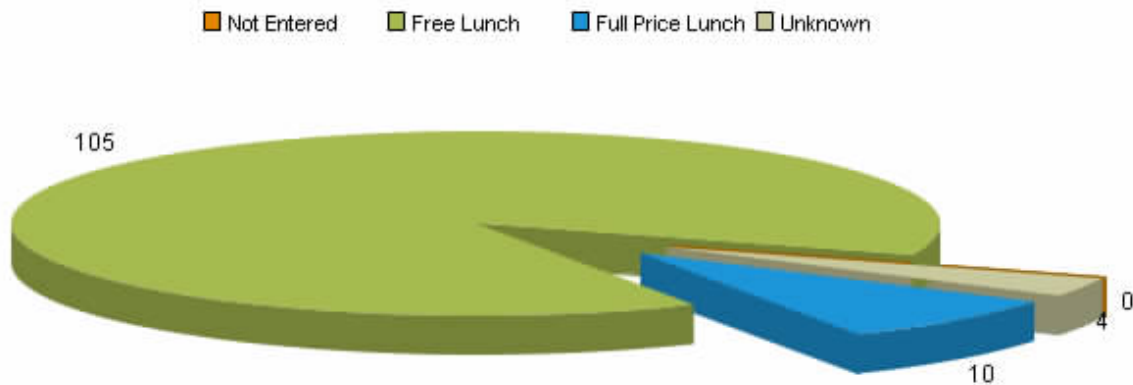
Students with:	Number	Percentage
IEP at intake	9	7.6%
Discipline Problems at Intake	30	25.2%
Involvement with the Juvenile Justice System at intake	27	22.7%

Family Situation:

Houston Site Data - Primary Care Giver

Family Member	Number
Not Entered	97
Two Parents	7
Mother	88
Father	20

Houston Site Data - Income Eligibility Status



Status	Number	Percentage
Not Entered	0	0.0%
Free Lunch	105	88.2%
Full Price Lunch	10	8.4%
Unknown	4	3.4%

Houston Site Data - Family Status

Students who live in home with only one adult	34	28.6%
Students who had no working adults in the home	4	3.4%
Average number of children in the home (excluding student)	2.9	N/A

Information Over Time:

Houston Site Data – Unexcused Absences

Intake Unexcused Absences	Days	Periods
Average #	14	18
Range	0-55	0-33
Number of Cases	108	8

Update 1 Unexcused Absences	Days	Periods
Average #	10.7	13.3
Range	0-46	0-23
Number of Cases	74	10

Update 2 Unexcused Absences	Days	Periods
Average #	13.4	11.8
Range	0-44	0-19
Number of Cases	13	5

Update 3 Unexcused Absences	Days	Periods
Average #	0	0
Range	0	0
Number of Cases	0	0

Houston Site Data – Excused Absences

Intake Excused Absences	Days	Periods
Average #	2.0	0
Range	0-22	0-3
Number of Cases	108	8

Update 1 Excused Absences	Days	Periods
Average #	3.5	3.1
Range	0-23	0-23
Number of Cases	74	10

Update 2 Excused Absences	Days	Periods
Average #	3.7	0.4
Range	0-9	0-2
Number of Cases	13	5

Update 3 Excused Absences	Days	Periods
Average #	0	0
Range	0-0	0-0
Number of Cases	0	0

Houston Site Data - Tardies

Tardies	Intake	Update 1	Update 2	Update 3
Average #	8.0	9.6	11.8	0.0
Range	0 - 44	0 - 57	0 - 40	0 - 0
Number of Cases	119	85	18	0

Houston Site Data - Days of In School Suspension (ISS)

Days of ISS	Intake	Update 1	Update 2	Update 3
Average #	0.2	0.2	0.1	0.0
Range	0 - 13	0 - 9	0 - 1	0 - 0
Number of Cases	119	85	18	0

Houston Site Data - Days of Out of School Suspension (OSS)

Days of OSS	Intake	Update 1	Update 2	Update 3
Average #	0.6	0.6	1.9	1.9
Range	0 - 10	0 - 6	0 - 12	0 - 0
Number of Cases	119	85	18	0

Houston Site Data - Overall Academic Performance

	Update 1		Update 2		Update 3	
	Number	Percent	Number	Percent	Number	Percent
Improved	32	37.6%	5	27.8%	0	0%
Same	23	27.1%	5	27.8%	0	0%
Worsened	11	12.9%	3	16.7%	0	0%
Not Collected	19	22.4%	5	27.8%	0	0%
Total	85	100.0%	18	100.0%	0	0%

Section 5

TRAIN Fact Sheet

Jacksonville

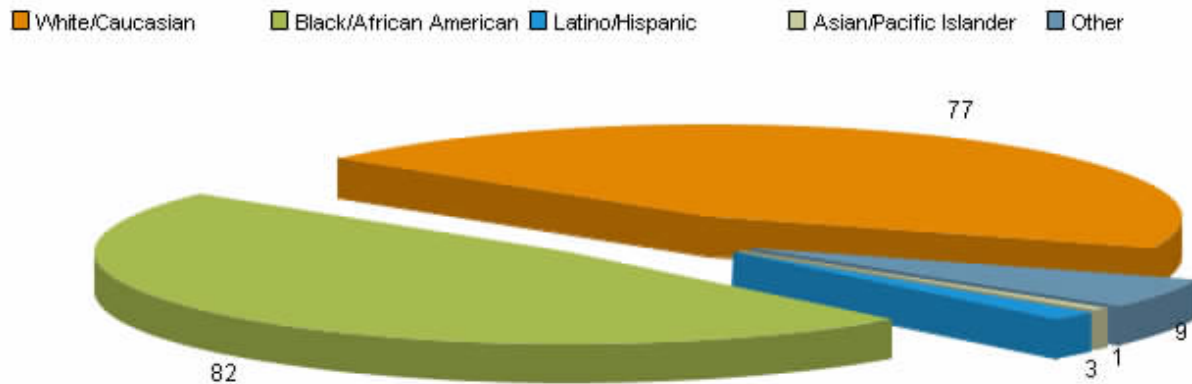
TRAIN Fact Sheet

Jacksonville

Reflecting Data from January 1, 1999 - July 21, 2006

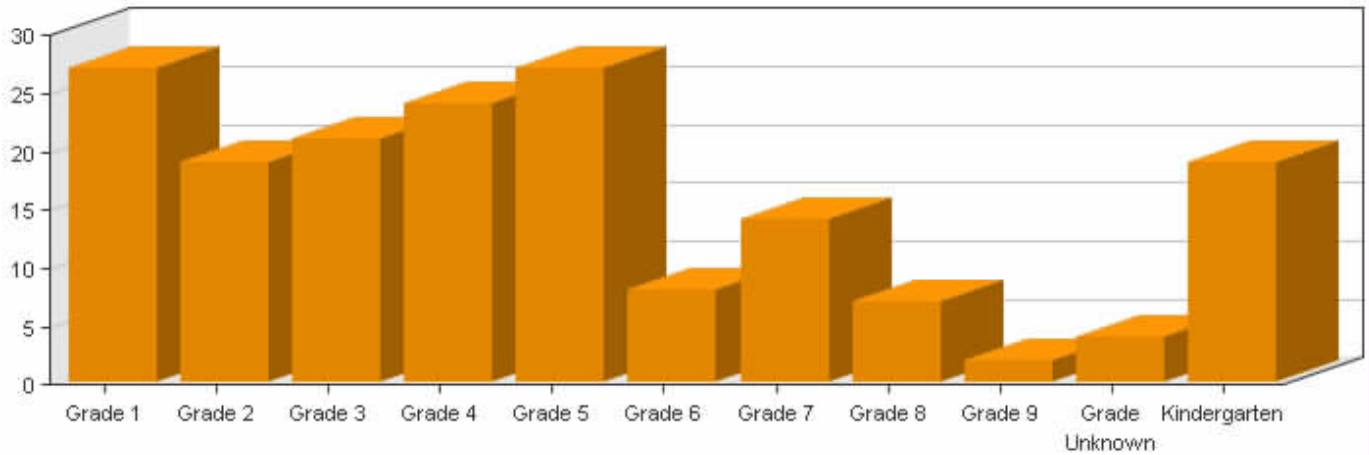
Number of Students in the Database: 172

Jacksonville Site Data - Ethnicity of Students



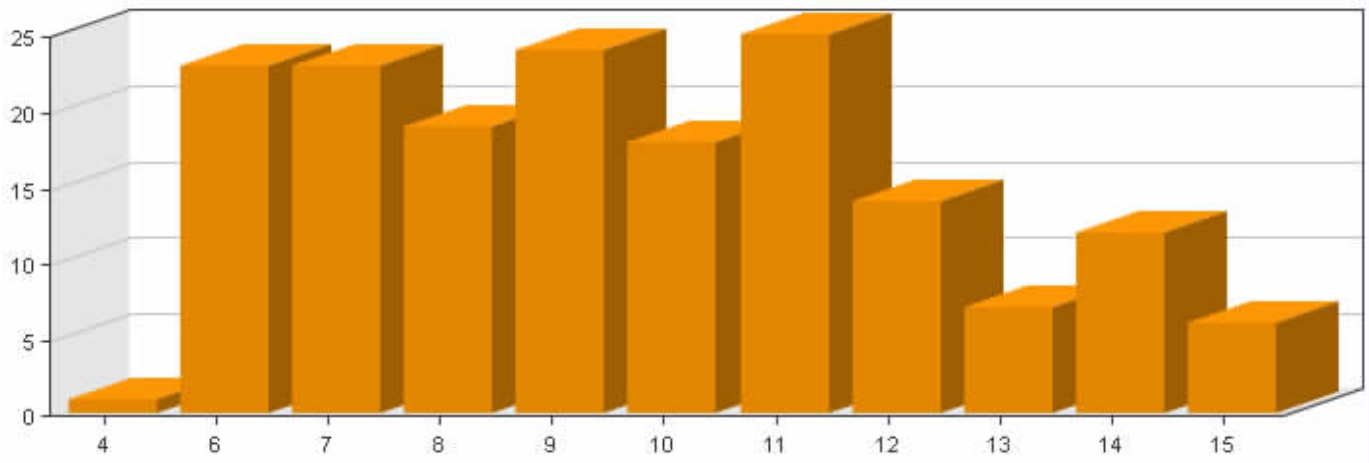
Ethnicity	Number	Percentage
White/Caucasian	77	44.8%
Black/African American	82	47.7%
Latino/Hispanic	3	1.7%
Asian/Pacific Islander	1	0.6%
Other	9	5.2%

Jacksonville Site Data - Grades of Students



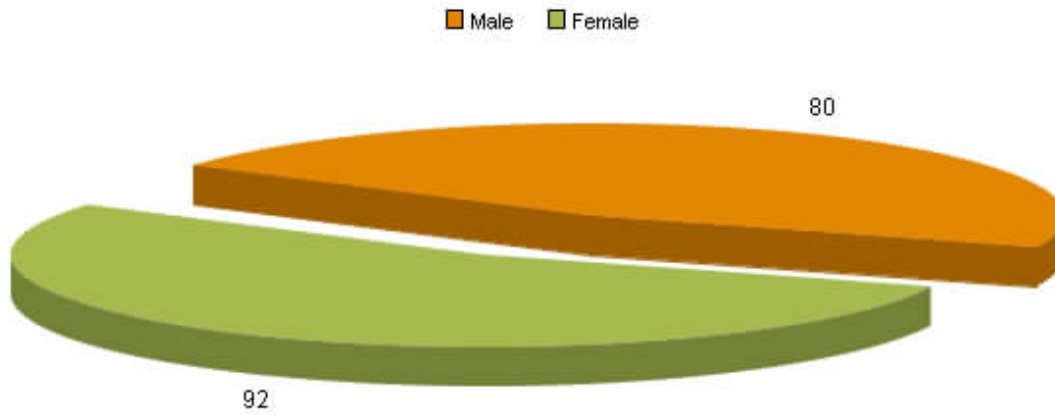
Grade	Number	Percentage
Grade 1	27	15.7%
Grade 2	19	11.0%
Grade 3	21	12.2%
Grade 4	24	14.0%
Grade 5	27	15.7%
Grade 6	8	4.7%
Grade 7	14	8.1%
Grade 8	7	4.1%
Grade 9	2	1.2%
Grade Unknown	4	2.3%
Kindergarten	19	11.0%

Jacksonville Site Data - Age of Students



Age	Number	Percentage
4	1	0.6%
6	23	13.4%
7	23	13.4%
8	19	11.0%
9	24	14.0%
10	18	10.5%
11	25	14.5%
12	14	8.1%
13	7	4.1%
14	12	7.0%
15	6	3.5%

Jacksonville Site Data - Gender of Students



Gender	Number	Percentage
Male	80	46.5%
Female	92	53.5%

Jacksonville Site Data - Education and Discipline Status

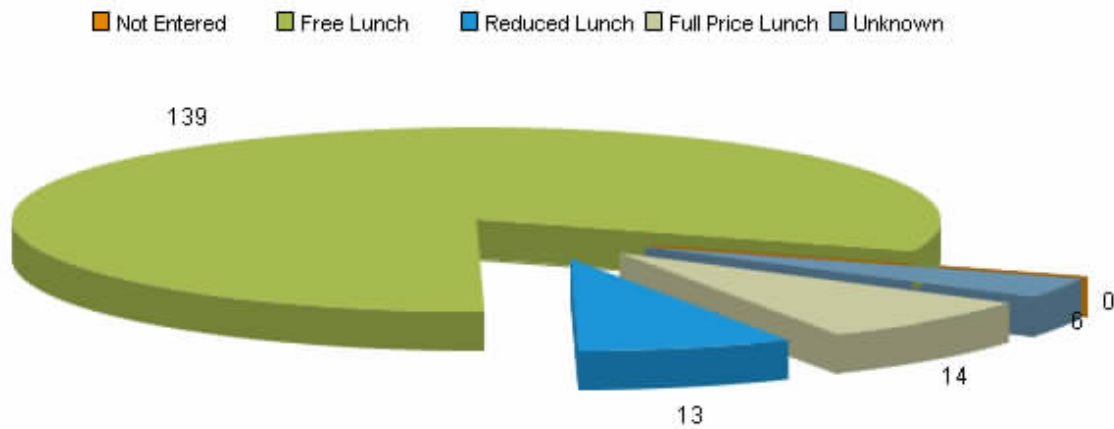
Students with:	Number	Percentage
IEP at intake	43	25.0%
Discipline Problems at Intake	13	7.6%
Involvement with the Juvenile Justice System at intake	2	1.2%

Family Situation:

Jacksonville Site Data - Primary Care Giver

Family Member	Number
Not Entered	124
Two Parents	7
Mother	152
Father	32
Other	1

Jacksonville Site Data - Income Eligibility Status



Status	Number	Percentage
Not Entered	0	0.0%
Free Lunch	139	80.8%
Reduced Lunch	13	7.6%
Full Price Lunch	14	8.1%
Unknown	6	3.5%

Jacksonville Site Data - Family Status

Students who live in home with only one adult	73	42.4%
Students who had no working adults in the home	51	29.7%
Average number of children in the home (excluding student)	3.1	N/A

Information Over Time:

Jacksonville Site Data – Unexcused Absences

Intake Unexcused Absences	Days	Periods
Average #	9	0
Range	0-51	0-0
Number of Cases	125	0

Update 1 Unexcused Absences	Days	Periods
Average #	4.5	0
Range	0-37	0-0
Number of Cases	112	0

Update 2 Unexcused Absences	Days	Periods
Average #	4.5	0
Range	0-28	0-0
Number of Cases	81	0

Update 3 Unexcused Absences	Days	Periods
Average #	3.3	0
Range	0-10	0-0
Number of Cases	24	0

Jacksonville Site Data – Excused Absences

Intake Excused Absences	Days	Periods
Average #	2.0	0
Range	0-28	0-0
Number of Cases	125	0

Update 1 Excused Absences	Days	Periods
Average #	3.5	0
Range	0-17	0-0
Number of Cases	112	0

Update 2 Excused Absences	Days	Periods
Average #	3.4	0
Range	0-23	0-0
Number of Cases	82	0

Update 3 Excused Absences	Days	Periods
Average #	4.88	0
Range	0-25	0-0
Number of Cases	25	0

Jacksonville Site Data - Tardies

Tardies	Intake	Update 1	Update 2	Update 3
Average #	4.9	4.0	3.9	3.2
Range	0 - 33	0 - 44	0 - 25	0 - 20
Number of Cases	172	157	113	44

Jacksonville Site Data - Days of In School Suspension (ISS)

Days of ISS	Intake	Update 1	Update 2	Update 3
Average #	0.1	0.1	0.1	0.2
Range	0 - 4	0 - 4	0 - 3	0 - 6
Number of Cases	172	157	113	44

Jacksonville Site Data - Days of Out of School Suspension (OSS)

Days of OSS	Intake	Update 1	Update 2	Update 3
Average #	0.3	0.2	0.2	0.2
Range	0 - 17	0 - 9	0 - 5	0 - 5
Number of Cases	172	157	113	44

Jacksonville Site Data - Overall Academic Performance

	Update 1		Update 2		Update 3	
	Number	Percent	Number	Percent	Number	Percent
Improved	64	40.8%	34	30.1%	13	29.5%
Same	56	35.7%	41	36.3%	21	47.7%
Worsened	24	15.3%	35	31.0%	9	20.5%
Not Collected	13	8.3%	3	2.7%	1	2.3%
Total	157	100.0%	113	100.0%	44	100.0%

Section 6

TRAIN Fact Sheet

Seattle

TRAIN Fact Sheet

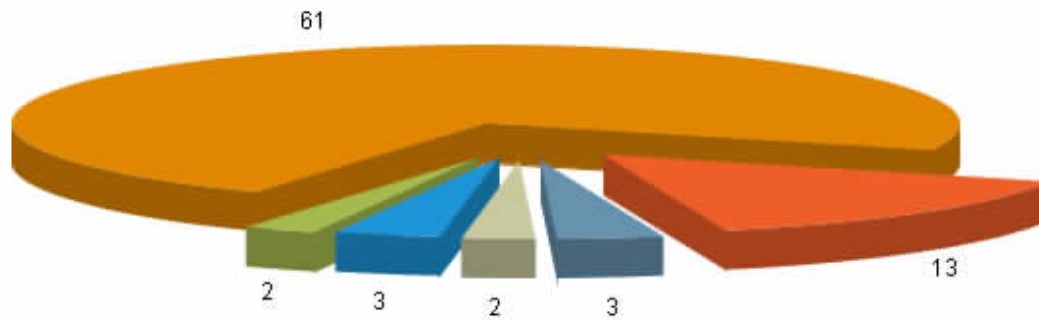
Seattle

Reflecting Data from January 1, 1999 - July 21, 2006

Number of Students in the Database: 84

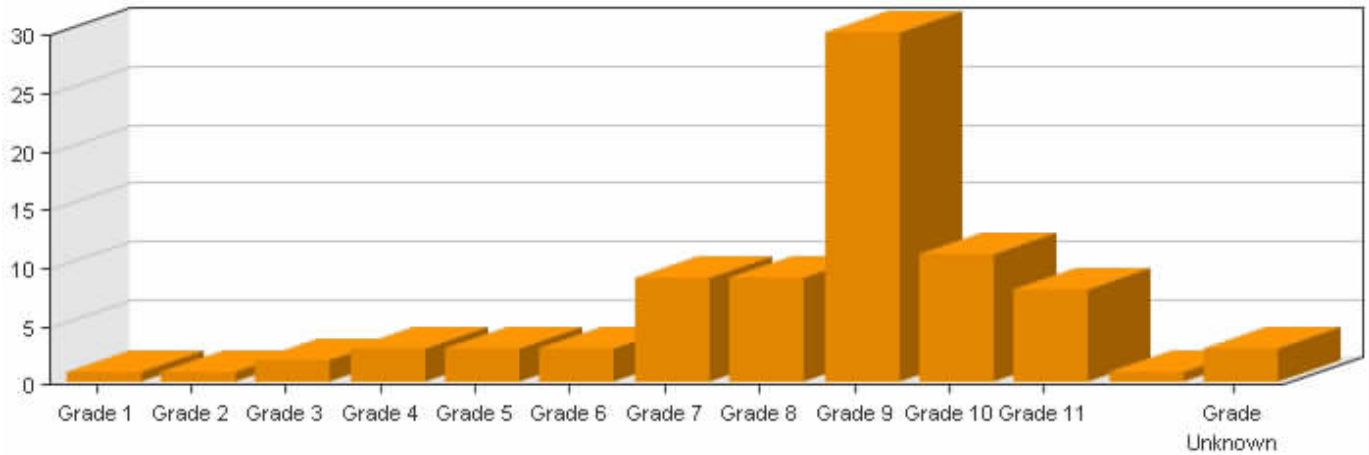
Seattle Site Data - Ethnicity of Students

■ White/Caucasian ■ Black/African American ■ Latino/Hispanic
■ Asian/Pacific Islander ■ Native American ■ Other



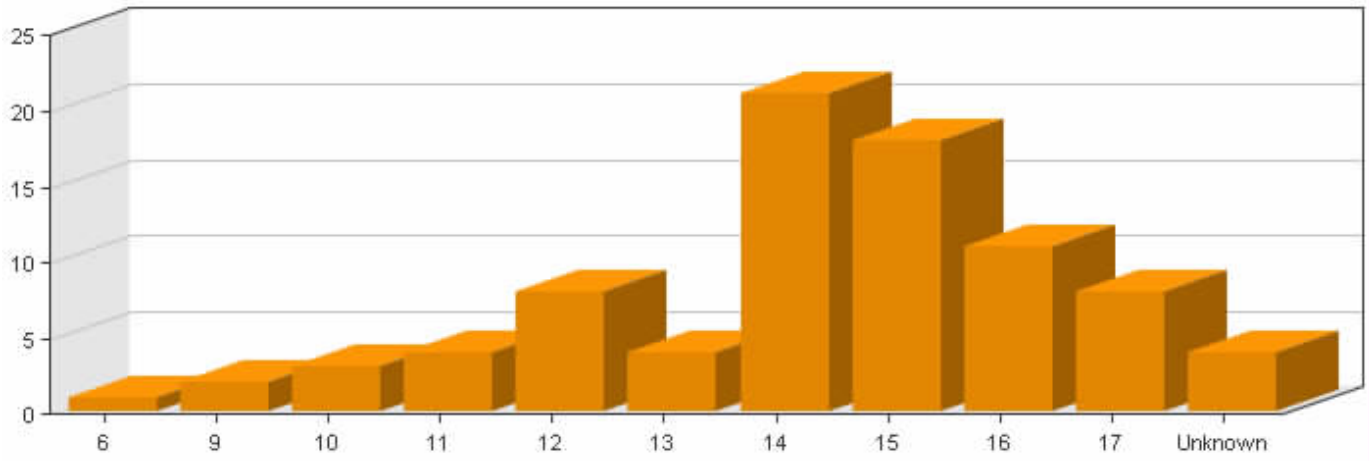
Ethnicity	Number	Percentage
White/Caucasian	61	72.6%
Black/African American	2	2.4%
Latino/Hispanic	3	3.6%
Asian/Pacific Islander	2	2.4%
Native American	3	3.6%
Other	13	15.5%

Seattle Site Data - Grades of Students



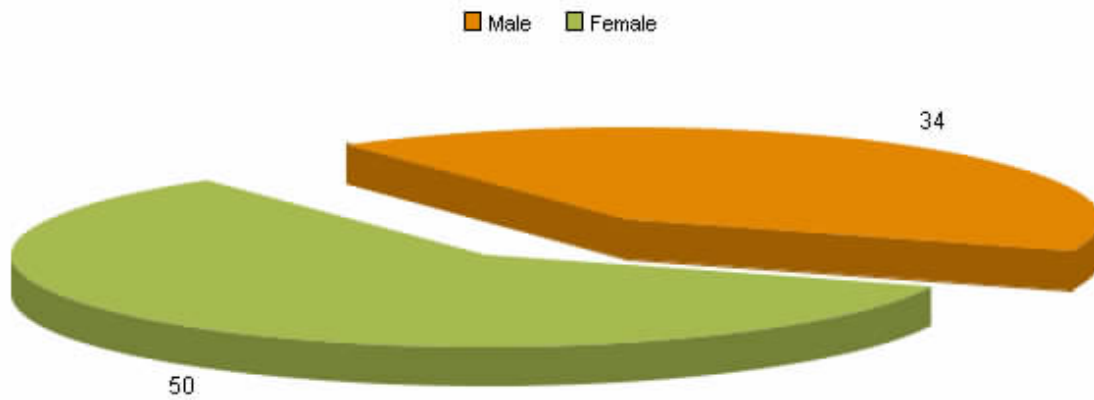
Grade	Number	Percentage
Grade 1	1	1.2%
Grade 2	1	1.2%
Grade 3	2	2.4%
Grade 4	3	3.6%
Grade 5	3	3.6%
Grade 6	3	3.6%
Grade 7	9	10.7%
Grade 8	9	10.7%
Grade 9	30	35.7%
Grade 10	11	13.1%
Grade 11	8	9.5%
Grade 12	1	1.2%
Grade Unknown	3	3.6%

Seattle Site Data - Age of Students



Age	Number	Percentage
6	1	1.2%
9	2	2.4%
10	3	3.6%
11	4	4.8%
12	8	9.5%
13	4	4.8%
14	21	25.0%
15	18	21.4%
16	11	13.1%
17	8	9.5%
Unknown	4	4.8%

Seattle Site Data - Gender of Students



Gender	Number	Percentage
Male	34	40.5%
Female	50	59.5%

Seattle Site Data - Education and Discipline Status

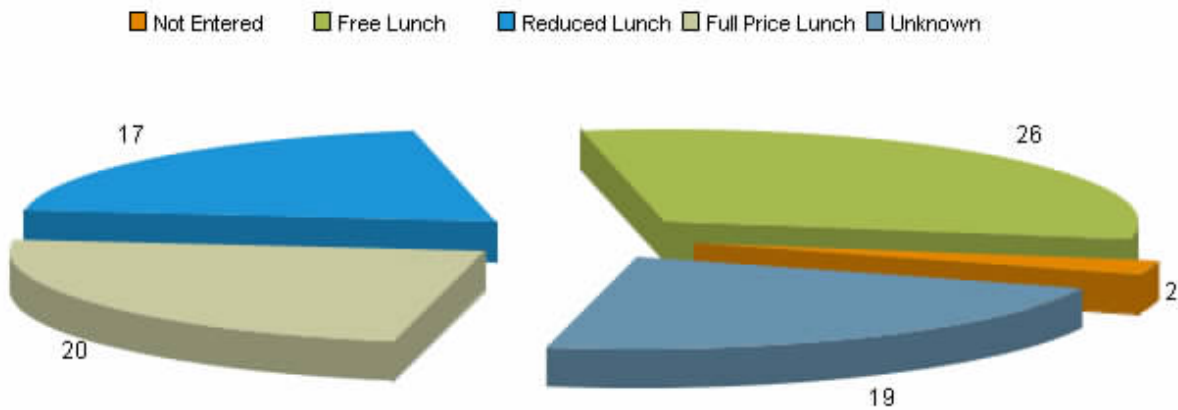
Students with:	Number	Percentage
IEP at intake	21	25.0%
Discipline Problems at Intake	12	14.3%
Involvement with the Juvenile Justice System at intake	37	44.0%

Family Situation:

Seattle Site Data - Primary Care Giver

Family Member	Number
Not Entered	14
Foster Family	5
Two Parents	14
Mother	52
Father	11
Other	1
Aunt/Uncle	2

Seattle Site Data - Income Eligibility Status



Status	Number	Percentage
Not Entered	2	2.4%
Free Lunch	26	31.0%
Reduced Lunch	17	20.2%
Full Price Lunch	20	23.8%
Unknown	19	22.6%

Seattle Site Data - Family Status

Students who live in home with only one adult	41	48.8%
Students who had no working adults in the home	20	23.8%
Average number of children in the home (excluding student)	2.7	N/A

Information Over Time:

Seattle Site Data – Unexcused Absences

Intake Unexcused Absences	Days	Periods
Average #	20	0
Range	0-150	0-0
Number of Cases	36	0

Update 1 Unexcused Absences	Days	Periods
Average #	.5	0
Range	0-1	0-0
Number of Cases	2	0

Update 2 Unexcused Absences	Days	Periods
Average #	0	0
Range	0-0	0-0
Number of Cases	0	0

Update 3 Unexcused Absences	Days	Periods
Average #	0	0
Range	0-0	0-0
Number of Cases	0	0

Seattle Site Data – Excused Absences

Intake Excused Absences	Days	Periods
Average #	8.0	0
Range	0-33	0-0
Number of Cases	36	0

Update 1 Excused Absences	Days	Periods
Average #	1.0	0
Range	0-2	0-0
Number of Cases	2	0

Update 2 Excused Absences	Days	Periods
Average #	0	0
Range	0-0	0-0
Number of Cases	0	0

Update 3 Excused Absences	Days	Periods
Average #	0	0
Range	0-0	0-0
Number of Cases	0	0

Seattle Site Data - Tardies

Tardies	Intake	Update 1	Update 2	Update 3
Average #	3.5	0.3	0.0	0.0
Range	0 - 75	0 - 8	0 - 0	0 - 0
Number of Cases	84	29	6	0

Seattle Site Data - Days of In School Suspension (ISS)

Days of ISS	Intake	Update 1	Update 2	Update 3
Average #	1.4	0.1	0.0	0.0
Range	0 - 50	0 - 2	0 - 0	0 - 0
Number of Cases	84	29	6	0

Seattle Site Data - Days of Out of School Suspension (OSS)

Days of OSS	Intake	Update 1	Update 2	Update 3
Average #	0.4	0.0	0.0	0.0
Range	0 - 20	0 - 0	0 - 0	0 - 0
Number of Cases	84	29	6	0

Seattle Site Data - Overall Academic Performance

	Update 1		Update 2		Update 3	
	Number	Percent	Number	Percent	Number	Percent
Improved	14	48.3%	2	33.3%	0	0%
Same	7	24.1%	2	33.3%	0	0%
Worsened	1	3.4%	2	33.3%	0	0%
Not Collected	7	24.1%	0	0.0%	0	0%
Total	29	100.0%	6	100.0%	0	0%

Section 7

TRAIN Fact Sheet

Suffolk County

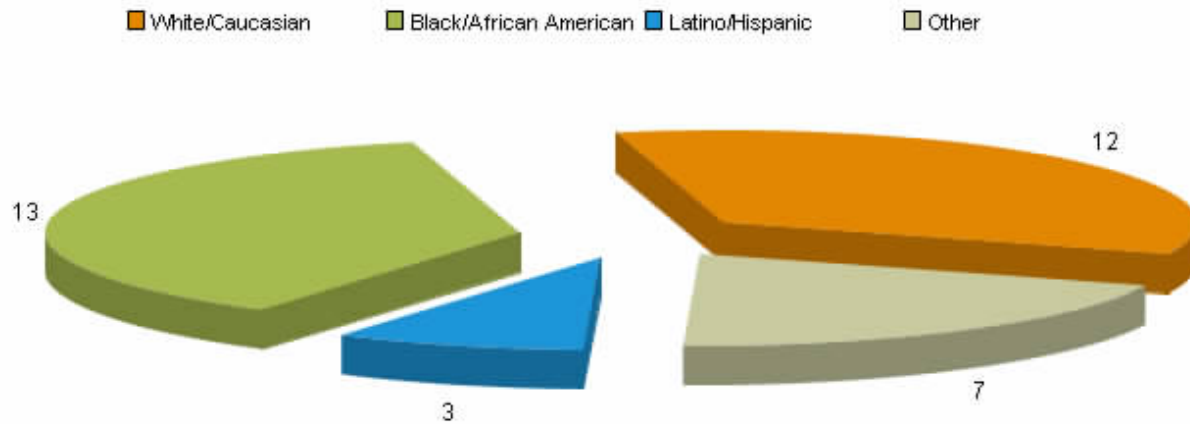
TRAIN Fact Sheet

Suffolk County

Reflecting Data from January 1, 1999 - July 21, 2006

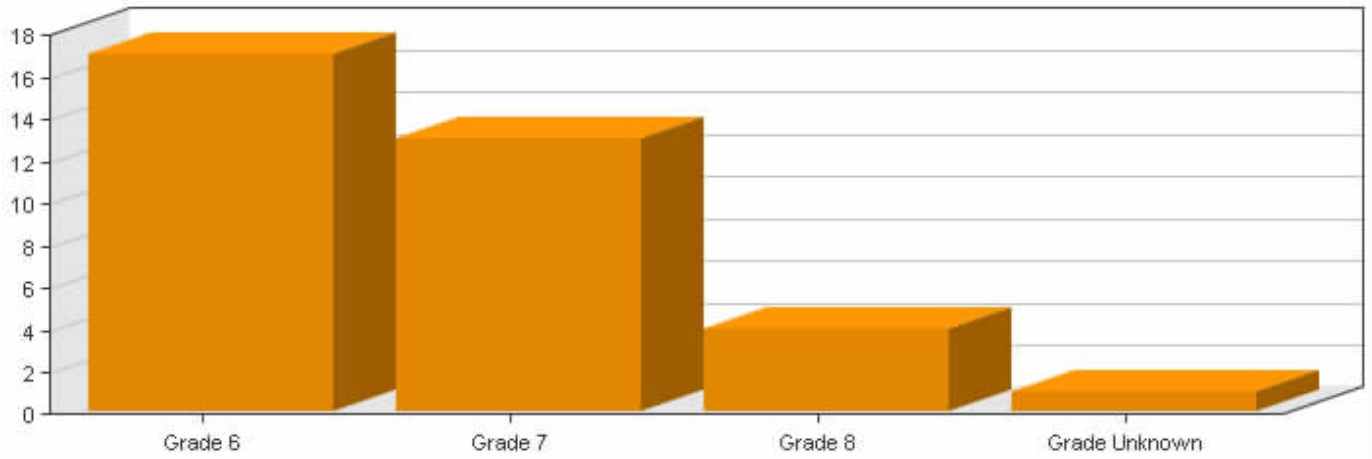
Number of Students in the Database: 35

Suffolk County Site Data - Ethnicity of Students



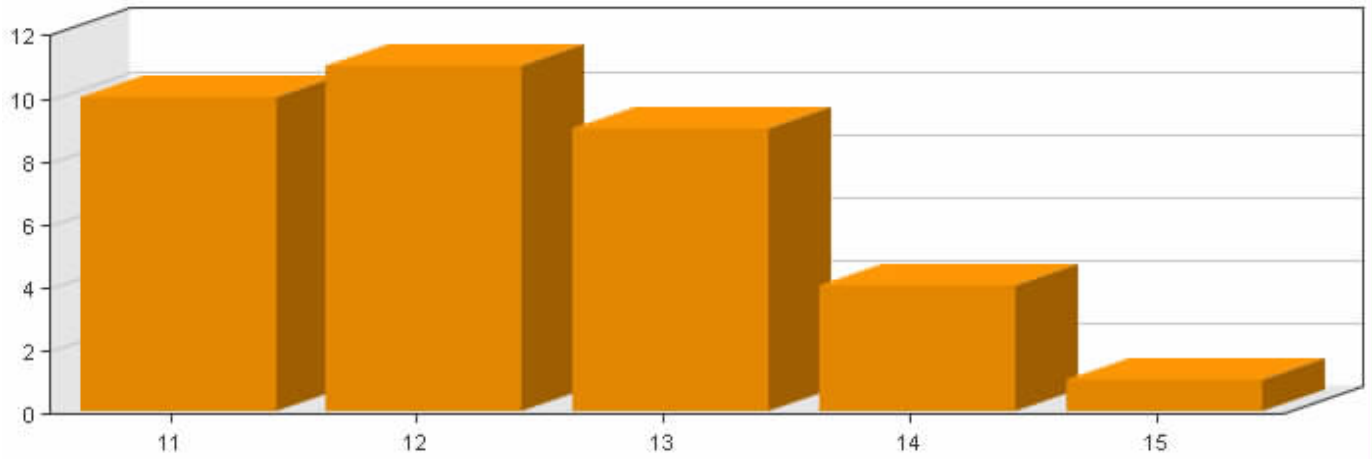
Ethnicity	Number	Percentage
White/Caucasian	12	34.3%
Black/African American	13	37.1%
Latino/Hispanic	3	8.6%
Other	7	20.0%

Suffolk County Site Data - Grades of Students



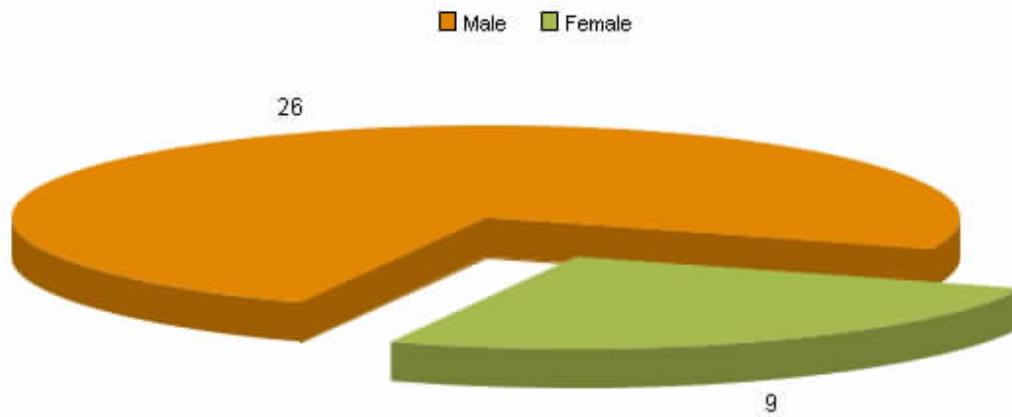
Grade	Number	Percentage
Grade 6	17	48.6%
Grade 7	13	37.1%
Grade 8	4	11.4%
Grade Unknown	1	2.9%

Suffolk County Site Data - Age of Students



Age	Number	Percentage
11	10	28.6%
12	11	31.4%
13	9	25.7%
14	4	11.4%
15	1	2.9%

Suffolk County Site Data - Gender of Students



Gender	Number	Percentage
Male	26	74.3%
Female	9	25.7%

Suffolk County Site Data - Education and Discipline Status

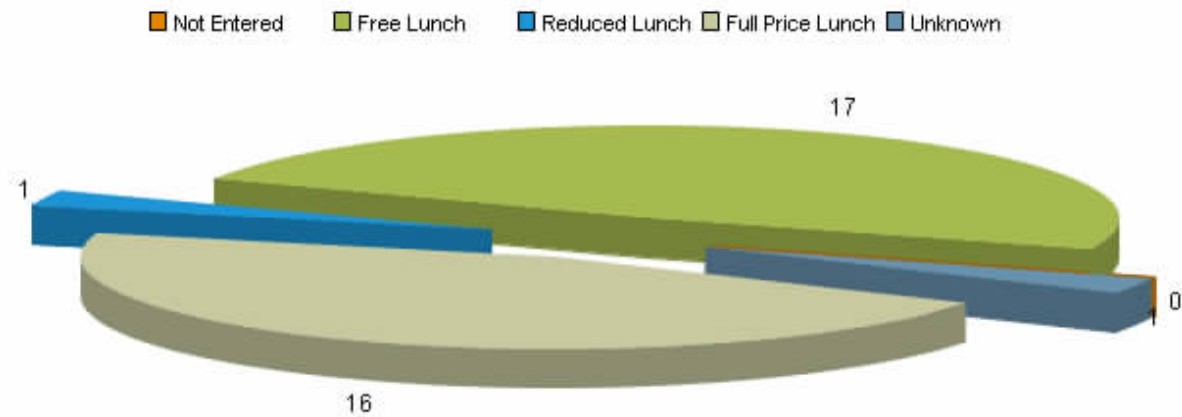
Students with:	Number	Percentage
IEP at intake	7	20.0%
Discipline Problems at Intake	7	20.0%
Involvement with the Juvenile Justice System at intake	2	5.7%

Family Situation:

Suffolk County Site Data - Primary Care Giver

Family Member	Number
Not Entered	6
Two Parents	10
Mother	25

Suffolk County Site Data - Income Eligibility Status



Status	Number	Percentage
Not Entered	0	0.0%
Free Lunch	17	48.6%
Reduced Lunch	1	2.9%
Full Price Lunch	16	45.7%
Unknown	1	2.9%

Suffolk County Site Data - Family Status

Students who live in home with only one adult	12	34.3%
Students who had no working adults in the home	5	14.3%
Average number of children in the home (excluding student)	2.9	N/A

Information Over Time:

Suffolk County Site Data – Unexcused Absences

Intake Unexcused Absences	Days	Periods
Average #	10	0
Range	0-41	0-0
Number of Cases	21	0

Update 1 Unexcused Absences	Days	Periods
Average #	2.2	0
Range	0-22	0-0
Number of Cases	18	0

Update 2 Unexcused Absences	Days	Periods
Average #	8.1	0
Range	0-34	0-0
Number of Cases	17	0

Update 3 Unexcused Absences	Days	Periods
Average #	11.9	0
Range	0-69	0-0
Number of Cases	16	0

Suffolk County Site Data – Excused Absences

Intake Excused Absences	Days	Periods
Average #	1.0	0
Range	0-14	0-0
Number of Cases	21	0

Update 1 Excused Absences	Days	Periods
Average #	0.6	0
Range	0-2	0-0
Number of Cases	18	0

Update 2 Excused Absences	Days	Periods
Average #	0.2	0
Range	0-2	0-0
Number of Cases	17	0

Update 3 Excused Absences	Days	Periods
Average #	0.19	0
Range	0-3	0-0
Number of Cases	16	0

Suffolk County Site Data - Tardies

Tardies	Intake	Update 1	Update 2	Update 3
Average #	10.4	3.7	5.3	4.1
Range	0 - 54	0 - 24	0 - 26	0 - 19
Number of Cases	35	29	26	23

Suffolk County Site Data - Days of In School Suspension (ISS)

Days of ISS	Intake	Update 1	Update 2	Update 3
Average #	1.2	0.2	0.3	0.6
Range	0 - 10	0 - 3	0 - 2	0 - 5
Number of Cases	35	29	26	23

Suffolk County Site Data - Days of Out of School Suspension (OSS)

Days of OSS	Intake	Update 1	Update 2	Update 3
Average #	0.8	0.3	0.5	0.5
Range	0 - 15	0 - 5	0 - 5	0 - 7
Number of Cases	35	29	26	23

Suffolk County Site Data - Overall Academic Performance

	Update 1		Update 2		Update 3	
	Number	Percent	Number	Percent	Number	Percent
Improved	12	41.4%	8	30.8%	5	21.7%
Same	5	17.2%	12	46.2%	10	43.5%
Worsened	11	37.9%	5	19.2%	8	34.8%
Not Collected	1	3.4%	1	3.8%	0	0.0%
Total	29	100.0%	26	100.0%	23	100.0%

Section 8

TRAIN Fact Sheet

Tacoma

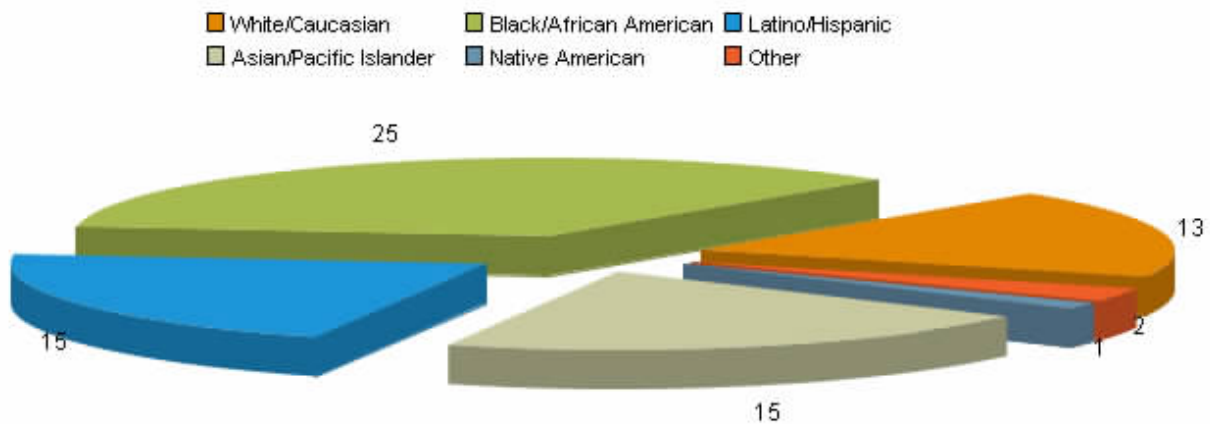
TRAIN Fact Sheet

Tacoma

Reflecting Data from January 1, 1999 - July 21, 2006

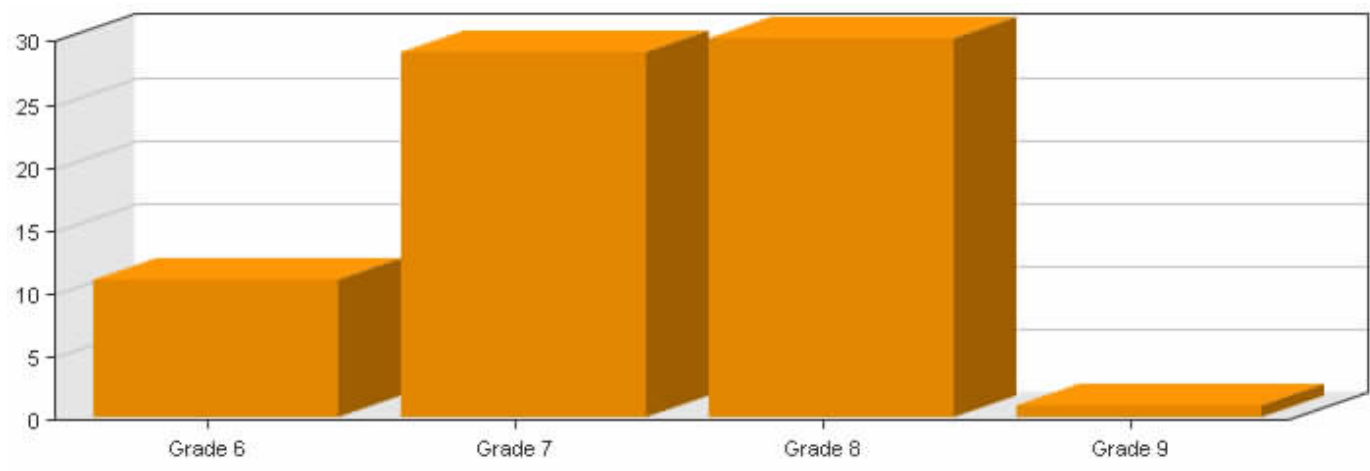
Number of Students in the Database: 71

Tacoma Site Data - Ethnicity of Students



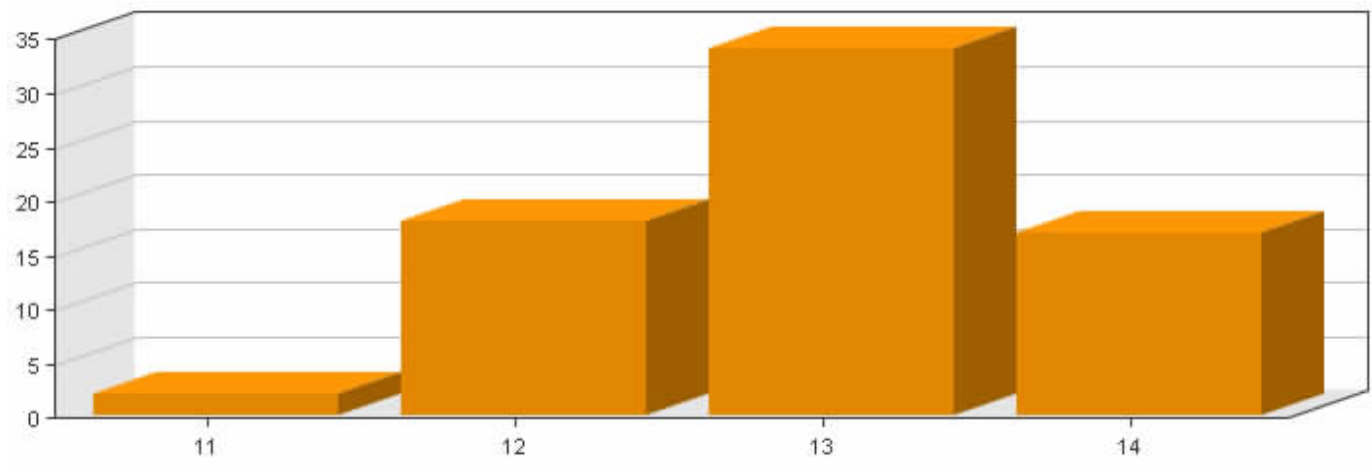
Ethnicity	Number	Percentage
White/Caucasian	13	18.3%
Black/African American	25	35.2%
Latino/Hispanic	15	21.1%
Asian/Pacific Islander	15	21.1%
Native American	1	1.4%
Other	2	2.8%

Tacoma Site Data - Grades of Students



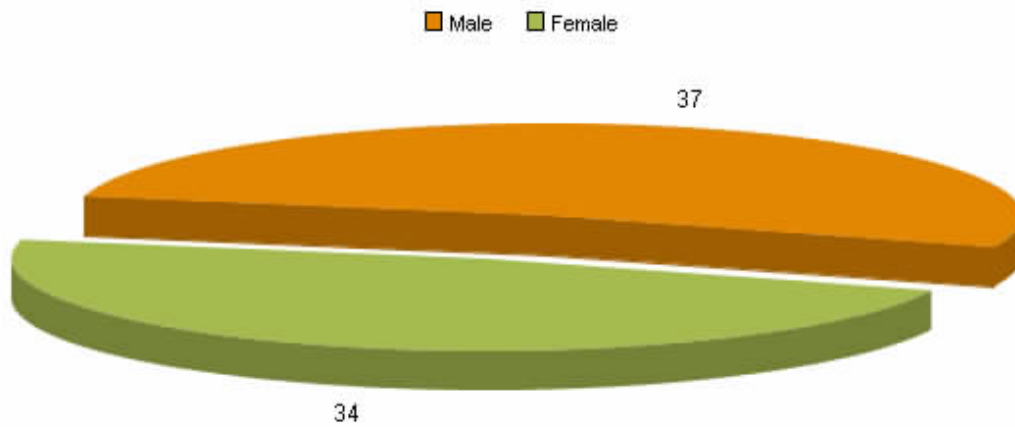
Grade	Number	Percentage
Grade 6	11	15.5%
Grade 7	29	40.8%
Grade 8	30	42.3%
Grade 9	1	1.4%

Tacoma Site Data - Age of Students



Age	Number	Percentage
11	2	2.8%
12	18	25.4%
13	34	47.9%
14	17	23.9%

Tacoma Site Data - Gender of Students



Gender	Number	Percentage
Male	37	52.1%
Female	34	47.9%

Tacoma Site Data - Education and Discipline Status

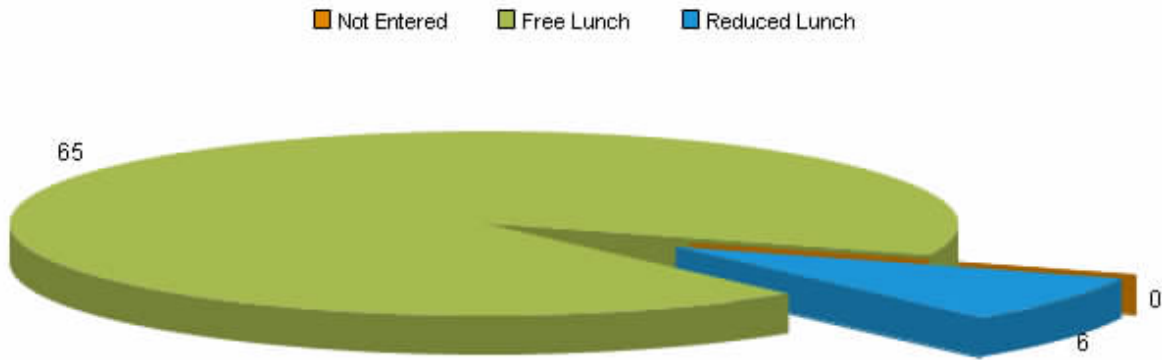
Students with:	Number	Percentage
IEP at intake	26	36.6%
Discipline Problems at Intake	30	42.3%
Involvement with the Juvenile Justice System at intake	12	16.9%

Family Situation:

Tacoma Site Data - Primary Care Giver

Family Member	Number
Not Entered	37
Foster Family	1
Two Parents	4
Mother	46
Father	15
Sibling	3
Other	1
Adoptive Family	1
Aunt/Uncle	3
Grandparent(s)	5

Tacoma Site Data - Income Eligibility Status



Status	Number	Percentage
Not Entered	0	0.0%
Free Lunch	65	91.5%
Reduced Lunch	6	8.5%

Tacoma Site Data - Family Status

Students who live in home with only one adult	21	29.6%
Students who had no working adults in the home	16	22.5%
Average number of children in the home (excluding student)	3.4	N/A

Information Over Time:

Tacoma Site Data – Unexcused Absences

Intake Unexcused Absences	Days	Periods
Average #	4.0	0
Range	0-48	0-0
Number of Cases	54	0

Update 1 Unexcused Absences	Days	Periods
Average #	6.8	1.0
Range	0-65	0-1
Number of Cases	37	1

Update 2 Unexcused Absences	Days	Periods
Average #	6.4	4.5
Range	0-60	0-7
Number of Cases	32	2

Update 3 Unexcused Absences	Days	Periods
Average #	5.4	0
Range	0-19	0-0
Number of Cases	13	0

Tacoma Site Data – Excused Absences

Intake Excused Absences	Days	Periods
Average #	6.0	0
Range	0-35	0-0
Number of Cases	54	0

Update 1 Excused Absences	Days	Periods
Average #	7.9	0
Range	0-42	0-0
Number of Cases	38	0

Update 2 Excused Absences	Days	Periods
Average #	11.7	28.5
Range	0-40	0-53
Number of Cases	32	2

Update 3 Excused Absences	Days	Periods
Average #	9.77	0
Range	0-37	0-0
Number of Cases	13	0

Tacoma Site Data - Tardies

Tardies	Intake	Update 1	Update 2	Update 3
Average #	7.0	8.6	9.6	6.3
Range	0 - 36	0 - 36	0 - 55	0 - 17
Number of Cases	71	49	44	14

Tacoma Site Data - Days of In School Suspension (ISS)

Days of ISS	Intake	Update 1	Update 2	Update 3
Average #	0.8	0.7	0.9	0.8
Range	0 - 15	0 - 4	0 - 6	0 - 4
Number of Cases	71	49	44	14

Tacoma Site Data - Days of Out of School Suspension (OSS)

Days of OSS	Intake	Update 1	Update 2	Update 3
Average #	0.8	1.0	1.5	1.5
Range	0 - 10	0 - 10	0 - 31	0 - 11
Number of Cases	71	49	44	14

Tacoma Site Data - Overall Academic Performance

	Update 1		Update 2		Update 3	
	Number	Percent	Number	Percent	Number	Percent
Improved	15	30.6%	15	34.1%	7	50.0%
Same	20	40.8%	11	25.0%	3	21.4%
Worsened	13	26.5%	17	38.6%	4	28.6%
Not Collected	1	2.0%	1	2.3%	0	0.0%
Total	49	100.0%	44	100.0%	14	100.0%

The National Center for School Engagement (NCSE) is an initiative of The Colorado Foundation for Families and Children (CFFC). NCSE strives to build a network of key stakeholders who share the belief that improving school attendance and school attachment promotes achievement and school success.



National Center for School Engagement

NCSE was established as a result of more than a decade of educational research about youth out of the educational mainstream conducted by CFFC. The impact of this work has been the development of significant investments of state funds to reduce suspensions expulsions and truancy. Over five years ago, CFFC began working with the OJJDP, US Department of Justice to assist in the planning and implementation of pilot demonstration projects across the country. As projects developed, CFFC became the national evaluator of this five-year truancy demonstration project.

The culmination of ten years of program experience and research has identified truancy and school engagement as the centerpiece of NCSE's work to improve outcomes for youth who are at the greatest risk of school failure and delinquency. We are national leaders in applying research to help communities prevent and reduce truancy.

Author:

Krystina Finlay, Ph.D.

Editor:

Sharlene Chiappetti

National Center for School Engagement
c/o Colorado Foundation for Families and Children
303 E. 17th Avenue, Suite 400
Denver, CO 80203
(303) 837-8466
www.schoolengagement.org