

The author(s) shown below used Federal funding provided by the U.S. Department of Justice to prepare the following resource:

Document Title: **Teaming up for Safer Cities: A Report from the Implementation Assessment of the National Forum on Youth Violence Prevention**

Author(s): **Jeffrey A. Butts, Caterina Roman, Kathleen A. Tomberg**

Document Number: **245613**

Date Received: **August 2017**

Award Number: **2010-MU-FX-0007**

This resource has not been published by the U.S. Department of Justice. This resource is being made publically available through the Office of Justice Programs' National Criminal Justice Reference Service.

Opinions or points of view expressed are those of the author(s) and do not necessarily reflect the official position or policies of the U.S. Department of Justice.

Teaming Up for Safer Cities

A Report from the Implementation Assessment of
the National Forum on Youth Violence Prevention

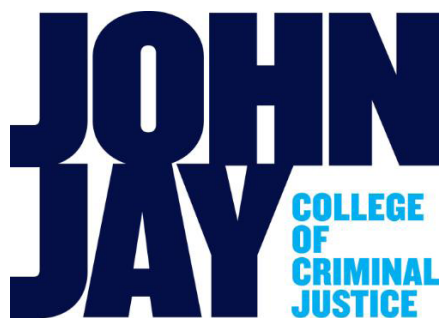
Jeffrey A. Butts
John Jay College

Caterina Roman
Temple University

Kathleen A. Tomberg
John Jay College

Research and Evaluation Center
John Jay College of Criminal Justice

December 2012



ACKNOWLEDGEMENTS

This report was prepared with support from the federal partnership responsible for launching the National Forum on Youth Violence Prevention. Specifically, funds were provided by the Office of Juvenile Justice and Delinquency Prevention (OJJDP), part of the U.S. Department of Justice and its Office of Justice Programs (OJP). The authors wish to thank the leadership of OJP, the Department of Justice, and the other federal partners for their guidance and support during the development of this report and the National Forum assessment project of which it is a part. The authors are also very grateful to the violence prevention leaders in each of the National Forum cities who helped us to compile the lists of survey respondents and to manage our communications with several hundred respondents. Without their efforts, the survey data described in this report would not exist. In particular, the authors would like to thank Jennifer Maconochie (Boston), Annie Ellington and Karen Brown (Detroit), Michelle Fowlkes and Washina White (Memphis), Georgina Mendoza (Salinas), and Mario Maciel and Linda Brewka (San Jose). Finally, the design and execution of a complicated survey project requires the efforts of many people. The authors are very grateful for the statistical assistance received from Seokhee Yoon and Evan Misshula of John Jay College of Criminal Justice, as well as the methodological and analytic support of Dr. Caitlin Taylor from LaSalle University in Philadelphia, and Dr. Douglas Evans from Mercy College in New York.

Copyright by the John Jay College of Criminal Justice Research and Evaluation Center, a member of the Research Consortium of John Jay College, City University of New York (CUNY).

John Jay College of Criminal Justice
899 Tenth Avenue
New York, NY 10019
www.johnjayresearch.org

Online December 2012

Any views expressed here are those of the authors and do not necessarily reflect the policies of John Jay College, the City University of New York, or its funders.

RECOMMENDED CITATION

Butts, Jeffrey A., Caterina Roman, and Kathleen A. Tomberg (2012). Teaming Up for Safer Cities. New York, NY: Research and Evaluation Center, John Jay College of Criminal Justice, City University of New York.

THE AUTHORS

Jeffrey A. Butts is director of the Research and Evaluation Center at John Jay College of Criminal Justice, City University of New York (CUNY). Previously, Jeff was a research fellow with Chapin Hall at the University of Chicago and director of the Program on Youth Justice at the Urban Institute in Washington, DC. He earned the Ph.D. from the University of Michigan.

Caterina Roman is a faculty member in Temple University's Department of Criminal Justice. Previously, she was a senior research associate at the Urban Institute in Washington, DC. She holds a Ph.D. from American University.

Kathleen A. Tomberg is a research analyst and the IRB Officer with the Research and Evaluation Center at John Jay College of Criminal Justice, City University of New York (CUNY). She earned a masters degree in forensic mental health counseling from John Jay College of Criminal Justice.

TABLE OF CONTENTS

Summary		1
The Initiative		3
The Assessment		5
Survey Respondents	5	
Survey Response Rates	6	
Survey Items	8	
Factor Scores	8	
The Results		14
Perceptions of the National Forum	14	
Change Indicators	15	
Factor Analysis	17	
Testing for Statistical Significance	17	
City Specific Changes	19	
Conclusions		24
<i>Appendix: Survey Form</i>		25

SUMMARY |

The National Forum on Youth Violence Prevention is a White House inspired, locally coordinated effort to strengthen youth violence prevention in selected U.S. cities. Communities electing to participate in the National Forum collaborate to develop youth violence prevention strategies that draw upon a wide array of community and organizational resources, including law enforcement, courts, schools, social services, mental health agencies, faith-based organizations, the business community, and a variety of neighborhood and community-based groups.

Six cities began working with the National Forum on Youth Violence Prevention in 2010. They were Boston, Chicago, Detroit, and Memphis, as well as Salinas and San Jose, California. By 2012, the Forum had grown to ten cities, including Camden (New Jersey), Minneapolis, New Orleans, and Philadelphia.

Soon after the National Forum began, the federal partners managing the effort asked the Research and Evaluation Center at John Jay College of Criminal Justice to observe the implementation of the National Forum and to prepare an assessment of the strategies pursued by each city. The research team at John Jay College worked with colleagues at Temple University's Department of Criminal Justice to conduct the assessment. The project employed a number of techniques for measuring the implementation of the National Forum, including direct observations, participant interviews, and stakeholder surveys administered at three points in time.

This report describes the results from the series of stakeholder surveys conducted in five of the first six cities to participate in the National Forum: Boston, Detroit, Memphis, Salinas, and San Jose. (By 2012, the National Forum efforts in Chicago had not reached a point that would justify the city's inclusion in this assessment report.) The first round of surveys was launched (via surveymonkey.com) in June 2011, while the second and third rounds began in February and August 2012, respectively. The last survey in the third round was received in October 2012. Thus, this report describes changes perceived by respondents during 15 months of National Forum implementation.

Changes are slow to come in complex violence reduction initiatives. The assessment team didn't expect to find large and profound improvements in the perceptions of respondents from National Forum cities. There were, however, a number of important indicators of positive change. Across the five surveyed cities, respondents reported improved law enforcement effectiveness, better access to family services and opportunities for youth, and more support for violence prevention from local officials.

Most importantly, survey respondents in the third round of surveys were less likely than those in the first round to report increasing levels of particular forms of violence in the community. Perceptions of violence associated with drug sales and family conflict, for example, improved in National Forum cities. Perceptions of gang violence also improved. In the first survey, for example, 46 percent of respondents in the five cities believed that gang activity was becoming more visible in their communities. By the third survey, the same perception was reported by just 33 percent of respondents.

Cities involved in the National Forum on Youth Violence Prevention are beginning to see substantive improvements in their efforts to stem youth violence. The results of these efforts are modest and they are almost always slow to develop. Some of the indicators that improved between the first and second surveys did not appear to improve in the third survey. Yet, the existence of any positive and measurable change in just 15 months is reason enough to believe that the efforts of the National Forum are having a beneficial effect on community safety.

THE INITIATIVE |

The National Forum on Youth Violence Prevention (or simply, the Forum) is an initiative established in 2010 under the direction of the White House to build local capacity to reduce and prevent youth violence. By bringing together diverse agencies, such as mental health, law enforcement, social services, schools, juvenile and criminal courts, faith-based groups, philanthropic organizations, businesses, and other neighborhood and community-based organizations, the Forum seeks to strengthen youth violence prevention efforts at the local level and to encourage information and resource sharing both within and between communities.

“A VIBRANT NATIONAL NETWORK OF FEDERAL AND LOCAL STAKEHOLDERS WHO, THROUGH THE USE OF MULTI-DISCIPLINARY PARTNERSHIPS, BALANCED APPROACHES AND DATA-DRIVEN STRATEGIES, STRENGTHEN COMMUNITIES SO THAT THEY MAY BETTER PREVENT VIOLENCE AND PROMOTE THE SAFETY, HEALTH, AND DEVELOPMENT OF THE NATION’S YOUTH.”

- VISION STATEMENT OF THE NATIONAL FORUM ON YOUTH VIOLENCE PREVENTION (2012)

The National Forum is not a grant program. Participating cities receive minimal financial support for travel and training. Most of the work associated with the Forum is supported by local organizations and even volunteers. The National Forum began with a series of meetings and workshops attended by the leadership teams from each city. Each team then returned home to refine and implement these strategic plans.

The cities assembled several more times over 24 months to review their progress and to share ideas with the other cities. Each city adheres to three key principles: 1) a reliance on multidisciplinary partnerships, 2) the development of balanced and coordinated strategies; and 3) the implementation of data-driven and evidence-driven strategies.

The Forum involves a host of federal agency partners that provide assistance to the Forum cities. The federal partners include the Departments of Justice, Education, Health and Human Services, Housing and Urban Development, Labor, and the Office of National Drug Control Policy.

Originally, the National Forum involved six cities – Boston, Chicago, Detroit, Memphis, and Salinas and San Jose, California. Another four cities joined in 2012 (Camden, New Jersey, Minneapolis, New Orleans, and Philadelphia). This report focuses on the first two years of Forum efforts in five of the original six cities (Boston, Detroit, Memphis, Salinas, and San Jose). Chicago remained part of the Forum, but its efforts had not been fully implemented by 2012 and its results are not included here.

The National Forum began with an October 2010 Working Session in Washington, DC. At this first working session, representatives from each of the cities and their federal partners came together to devise their initial strategies. The federal partners then continued to organize conference calls, meetings, and workshops with each of the cities to help them refine their comprehensive strategic plans. The plans often built upon existing resources and even other federal initiatives, but each city identified its own approach to reducing youth violence. The plans were unveiled at the April 2011 Summit held in Washington, DC, which was again attended by city and federal representatives.

All the plans followed the National Forum [logic model](#) and included key outcomes like broader collaboration and coordination with community partners, adherence to data-driven approaches, better use of private and public funding resources, and expanded youth access to opportunities and assets in support of positive youth development.

Through ongoing meetings and workshops, each city in the National Forum continued to refine its comprehensive plan and the federal partners worked to support each city with direct assistance and other resources whenever possible. These resources included consultation, training, and a variety of online tools available for any community interested in improving its efforts to reduce youth violence. Each city pursued three key goals: 1) to elevate the issue of youth violence to national significance; 2) to enhance local capacity to combat youth violence; and 3) to sustain ongoing progress through collaboration at the local, state, and federal level. These goals were implemented with federal guidance in accord with each city's particular strategic plan.

THE ASSESSMENT |

The National Forum is a collaborative partnership between local agencies and community organizations. Each city pursues its own strategy in keeping with its own local circumstances. This approach increases the likelihood that Forum-inspired changes will be accepted and sustained at the local level, but it complicates any effort to assess implementation of the Forum across cities. As each city follows a different course of action with varying emphases, it is impossible to fashion detailed measures that compile information in the same way in each location. The assessment team at John Jay College and Temple University surveyed public officials and community members about their general perceptions of youth violence and the effectiveness of local efforts to prevent and reduce it. Repeated surveys of local informants represented a cost-effective alternative for monitoring the highly varying changes that were expected to occur during this multi-site, multi-faceted, collaborative initiative.

SURVEY RESPONDENTS

The assessment project did not attempt to measure the perceptions and attitudes of entire communities. Instead, it surveyed a smaller, pre-defined group of expert informants in each city. Researchers identified the stakeholder informants in advance by asking the leadership team in each community to consider people who would be best qualified to assess the overall effectiveness of local law enforcement, youth services, and the adequacy of violence prevention efforts in the city as a whole. Each list typically included judges, police officers, educators, substance abuse and mental health treatment professionals, community activists and organizers, members of faith-based organizations, and youth advocates.

The assessment team confirmed that each list was a valid representation of potential experts in the community, and not simply a list of people who were likely to view the National Forum in favorable terms. In particular, the assessment team ensured that a substantial number of respondents were not directly involved in the National Forum. Researchers asked each coordinator to nominate people who were knowledgeable about their city's youth violence reduction efforts, whether or not those people had ever attended a meeting about the National Forum or were even known to be aware of the city's participation in the Forum.

Before each round of surveys, the city coordinators were asked to review their list of respondents, to update them as necessary (accounting for job changes,

etc.), and to reaffirm that the individuals on their list were still the best, most informed respondents to assess their city’s violence prevention efforts. Because the lists were reconfirmed before each administration of the survey, the assessment was able to consider each respondent group to be a finite population of ideal informants for a given community, rather than a sample of all possible informants. This approach allowed statistical tests to incorporate a **finite population correction** that produces smaller margins of error.

(Also see: Rao, J.N.K. and A.J. Scott. 1981. “The analysis of categorical data from complex sample surveys: Chi-squared tests for goodness of fit and independence in two-way tables.” [Journal of the American Statistical Association](#), 76, 374: 221-230.)

SURVEY RESPONSE RATES

Researchers administered the survey three times in each of the National Forum cities. The first administration (Summer 2011) began in June 2011 and ended in July 2011. The second survey (Winter 2012) launched in February 2012 and ended in March, while the third survey (Summer 2012) commenced in August 2012 and the research team accepted the very last survey in early October 2012.

Researchers emailed 341 survey invitations for Summer 2011, 347 invitations for Winter 2012, and 337 invitations for Summer 2012. Researchers received complete responses from 217 individuals (or 64% of those surveyed) for the first survey in Summer 2011, 212 (or 61%) for the second survey, and 167 (or 50%) for the third survey in Summer 2012 (Table 1).

The lower response rates at each successive survey administration were not unexpected, as the novelty of any survey diminishes over time. The assessment team made repeated attempts (emails at first, and eventually

Table 1. Percentage of Respondents Answering Each Survey

National Forum Cities	Summer 2011	Winter 2012	Summer 2012
Boston, MA	73%	73%	62%
Detroit, MI	67%	68%	48%
Memphis, TN	57%	56%	41%
Salinas, CA	67%	59%	57%
San Jose, CA	57%	49%	41%
All Cities	64%	61%	50%

phone calls) to follow-up with non-responders. For the third survey, the team also introduced a raffled gift card incentive of \$200, which was necessary to raise the response rate to 50 percent.

In all three iterations of the survey, the Boston sample had the highest response rate (73% for the first two surveys and 62% in Summer 2012). The cities with the lowest response rates were Memphis and San Jose.

Respondents in each administration of the survey were relatively similar in terms of age, race, ethnicity, and sex. The majority of respondents were between 40 and 59 years old (62% in Summer 2012) and approximately half were male (49% in Summer 2012). The racial/ethnic composition of the sample fluctuated somewhat between survey administrations. Almost half of the respondents in Summer 2011 (45%) and Summer 2012 (44%) were Caucasian, but just over a third (35%) of respondents in Winter 2012 were Caucasian. A majority of Winter 2012 respondents were either African-American (39%) or Hispanic/ Latino (14%).

Respondents varied slightly in occupational affiliation (Table 2). The survey asked respondents to indicate their professional or occupational roles in so far as they related to their expertise in youth violence prevention. Respondents were given a list of more than a dozen possible roles from which to choose, as well as an opportunity to write in “other” categories. Researchers collapsed the various answers into 4 large groups: justice system; social services; education; and, other allied sectors. The occupational characteristics of the respondent samples varied somewhat between cities, but they did not change appreciably within cities over the course of the implementation assessment.

Table 2. Occupational Affiliations of Survey Respondents

Occupation	Boston		Detroit		Memphis		Salinas		San Jose	
	2011	2012	2011	2012	2011	2012	2011	2012	2011	2012
Justice	46%	41%	35%	29%	33%	45%	24%	23%	14%	15%
Social Services	28%	28%	27%	24%	26%	24%	26%	26%	45%	46%
Education	2%	5%	8%	9%	7%	3%	14%	10%	7%	8%
Other	24%	26%	30%	38%	33%	28%	36%	41%	33%	31%
Total	100%	100%	100%	100%	100%	100%	100%	100%	100%	100%

SURVEY ITEMS

The assessment team's survey tracked how respondents in each city viewed the effectiveness of their community's violence prevention strategies and whether those strategies changed over time as intended by the National Forum. The survey included a total of 144 items that measured the perceptions, opinions, and attitudes of stakeholders in each community. Survey items asked about the key outcomes targeted by the National Forum, as well as changes in policies and leadership dynamics, and the improvements in personal and organizational relationships that were hypothesized by the National Forum to produce positive effects on public safety. Most of the items were developed from existing scales and instruments and then combined in a new tool created specifically for this assessment.

The content of the surveys varied somewhat by respondent type. Items designed to measure general perceptions and attitudes about the prevention of youth violence were administered to the total sample. Other items required respondents to have informed opinions about the National Forum strategy and process. These items were provided only to the subset of respondents answering positively to an earlier question about their previous awareness of the National Forum. In the Summer 2011 survey, for example, just two-thirds of all respondents indicated that they had been "aware" of the National Forum prior to receiving the survey.

A third set of survey items measured the perceptions of an even smaller set of respondents—those who were not only aware of the National Forum, but who were directly involved in it. In the Summer 2011 survey, slightly more than half of all respondents indicated through their answers that they were "involved" in the National Forum.

FACTOR SCORES

To simplify the task of analyzing the dozens of items in each survey, the research team conducted a series of exploratory and confirmatory factor analyses on 99 items and combined them into multi-variable "factors." (The remaining 45 items were not included in the factor analysis, but were analyzed individually or as scales.) The Summer 2011 survey data were used to create a preliminary factor structure, which was then refined and revised using the survey data from Winter 2012. The final round of surveys in Summer 2012 were analyzed using the previously established factor structure (Table 3).

Table 3. Survey Items and Factors**Questions Asked of All Respondents**

Factor	Component Survey Items	RELIABILITY COEFFICIENTS (α)		
		Summer 2011	Winter 2012	Summer 2012
Community Capacity for Prevention	My city does a good job of intervening with youth already known to be violent.	.892	.943	.865
	My city does a good job of preventing violence before it occurs.			
	Troubled families in my city do NOT know where to get help.(RC)			
	My city does a good job of involving key stakeholders.			
	My city does a good job of involving people from the neighborhood.			
	We do NOT make much progress in my city because we can never agree. (RC)			
	Social agencies in my city are effective.			
	People generally come together to work on the issue.			
	Political leaders in my city understand the community's needs.			
Communication and Goal Setting	Organizations in my city work together effectively.			
	We listen to everyone's opinion.	.900	.940	.909
	We discuss whether we are working together effectively.			
	We have an effective decision-making process.			
	We work hard to establish a credible, open process.			
	We set aside our individual interests to achieve common goals.			
	We are inspired to be action-oriented.			
	Our planning process helps us to set aside our doubts and skepticism.			
Organizational Collaboration	(Change in) Our willingness to undertake joint projects with other organizations working to prevent youth violence.	.911	.925	.924
	(Change in) Our efforts to coordinate our services with those of other organizations working to prevent youth violence.			
	(Change in) Our involvement or even co-sponsoring events with other organizations working to prevent youth violence.			
	(Change in) Our collaborative efforts with other groups and organizations working to reduce violence.			
	(Change in) Our support for community leaders working to prevent violence, even when we have no financial ties.			
	(Change in) Our exchange of information with other organizations working to prevent youth violence.			
	(Change in) Our sharing of resources (e.g. equipment, supplies) with other organizations working to prevent youth violence.			
	(Change in) Our referrals either to or from other organizations working to prevent youth violence.			

* RC = "Reverse Coded"- Scoring reversed so that higher values reflected more desirable answers.

Unless otherwise noted, questions were phrased as three-point, multiple-choice scales ("decrease," "neutral," or "increase"), or as five-point scales from "strongly disagree" to "strongly agree," and from "much more serious" to "much less serious."

Questions Asked of All Respondents (continued)

Factor	Component Survey Items	RELIABILITY COEFFICIENTS (α)		
		Summer 2011	Winter 2012	Summer 2012
Opportunities for Youth	Youth in my city know where to get help finding jobs.	.765	.812	.757
	Youth in my city know where to get educational help.			
	My city is good at getting youth connected with the services and programs they need.			
	There are plenty of good things for youth to do after school.			
	(Change in) Youth participating in supervised recreational activities.			
Law Enforcement Efficacy	(Change in) Collaborative efforts involving law enforcement and schools.	.718	.736	.774
	(Change in) Law enforcement activity focused on preventing violent crime.			
Decrease in Perceived Violence	(Change in) The amount of violence associated with family conflicts.	.871	.871	.913
	(Change in) The overall amount of violence.			
	(Change in) The amount of violence associated with selling illegal drugs.			
	(Change in) The visibility of gang activity.			
	(Change in) The amount of violence associated with organized gangs or crews.			
	(Change in) The amount of violence involving guns or firearms.			

Questions Asked of “Aware” Respondents*

National Forum Efficacy	My city's efforts through the National Forum aid in the development of smaller partner organizations.	.800	.856	.819
	The National Forum helps to increase communication between citizens and government in my city.			
	The National Forum facilitates cross-agency fund-raising efforts in my city.			
	The National Forum helps to educate public officials in my city about youth violence prevention and intervention.			
	The National Forum increases the public's DISTRUST of government agencies in my city. (RC)			
	The National Forum encourages my city to build coalitions.			
	My city's efforts through the National Forum include a plan for identifying new community resources.			
	My city's efforts through the National Forum include a plan for identifying new funding opportunities.			

* Survey respondents who indicated that they were aware of the National Forum prior to receiving the survey.

Questions Asked of “Aware” Respondents (*continued*)

Factor	Component Survey Items	RELIABILITY COEFFICIENTS (α)		
		Summer 2011	Winter 2012	Summer 2012
Community Leadership	Agencies in my city LACK the expertise to achieve the goals of the National Forum. (RC)	.782	.771	.783
	The local leaders of the National Forum encourage different points of view in discussion.			
	My city's efforts for the National Forum are dominated by just one or two organizations. (RC)			
	The resources of organizations and agencies participating in the National Forum are NOT being used effectively. (RC)			
	My city's National Forum leadership is good at diffusing conflict.			
Community Expertise	Organizations in my city have the expertise to improve gang prevention efforts.	.767	.706	.720
	Organizations in my city have the expertise to improve gang suppression efforts.			
	Organizations in my city have the expertise to improve youth reentry.			
	The resources of organizations and agencies participating in the National Forum are NOT being used effectively. (RC)			
Multi-Disciplinary Focus	The NFYVP is mainly another effort to increase gang suppression. (RC)	.658	.722	.660
	The National Forum is mainly a way to expand social services. (RC)			
	In my city, the National Forum is mainly a police effort. (RC)			
Diverse Perspectives	The National Forum helped us to see youth violence from different perspectives.	.659	.655	.650
	The National Forum really brought together a diverse group of people and agencies in my city.			
Personal Commitment	My personal involvement in the National Forum on Youth Violence Prevention is important to me.	.874	.861	.864
	I plan to stay involved in the National Forum on Youth Violence Prevention as long as my city is involved.			
	The success of the NFYVP is important to me.			

Questions Asked of “Involved” Respondents*

Factor	Component Survey Items	RELIABILITY COEFFICIENTS (α)		
		Summer 2011	Winter 2012	Summer 2012
Agency Commitment	(Importance of) Being part of the NFYVP helps to raise the profile of our work to prevent violence.	.747	.713	.825
	(Importance of) Being part of the NFYVP facilitates more effective sharing of ideas.			
	(Importance of) Being part of the NFYVP enhances our organization's reputation.			
	(Importance of) Being part of the NFYVP encourages us to adopt a city-wide focus.			
Data Driven Orientation	My city's strategic plan for the National Forum will allow us to track our effectiveness accurately.	.758	.691	.681
	The strategic plan in my city includes measurable objectives.			
	The strategic plan in my city was built from an analysis of recent youth crime trends.			
	Local officials in my city are NOT really data oriented. (RC)			
	(Importance of) Being part of the NFYVP encourages more effective uses of data.			
	(Importance of) Being part of the NFYVP facilitates more effective sharing of data about youth.			
Strategic Planning	The strategic plan in my city FAILS to utilize the experiences and resources of some potentially helpful organizations. (RC)	.824	.839	.850
	The strategic plan in my city incorporates the concerns and hopes of local residents and youth.			
	The strategic plan in my city has realistic goals.			
	The strategic plan in my city includes opportunities for early success.			
	Participating organizations in my city generally agree on what the strategic plan should include.			

* Survey respondents who indicated that they were directly involved in the National Forum prior to receiving the survey.

The research team performed an exploratory factor analysis on the survey items answered by all respondents in Summer 2011, and extracted seven factors using principal components methods. The results suggested that three of the original factors could be retained for subsequent analysis, as they explained more than 50 percent of the total variance of the included items and they remained stable in the Winter 2012 survey.

A second series of confirmatory factor analyses tested *a priori* constructs related to the goals and strategies being pursued by the cities involved in the National Forum. Across 10 confirmatory factor analyses, an additional 18 factors emerged, of which 12 performed well enough to be retained in subsequent analyses. Retention criteria included a sufficiently high reliability coefficient (Cronbach's α) and reasonable stability from the Summer 2011 to Winter 2012 surveys.

All 15 factors retained from both types of factor analysis were rotated using the promax method. An item was said to have loaded on a factor if its loading was greater than .40. If any items loaded onto more than one factor at greater than .40, the item was not retained within the factor. Of the original 99 items included in the factor analysis, 21 did not load significantly on any factor and were set aside for separate analysis.

“OUR GOAL IS TO EXPAND THE NATIONAL CONVERSATION ABOUT YOUTH VIOLENCE AND ITS IMPACT ON OUR HOMES AND COMMUNITIES,” SAID ATTORNEY GENERAL HOLDER. “THE DEPARTMENT IS COMMITTED TO WORKING WITH OUR PARTNERS TO CREATE AND SUSTAIN STRATEGIES TO PREVENT THIS VIOLENCE AND KEEP OUR YOUTH AND COMMUNITIES SAFE.”

- PRESS RELEASE, U.S. DEPARTMENT OF JUSTICE (APRIL 2, 2012)

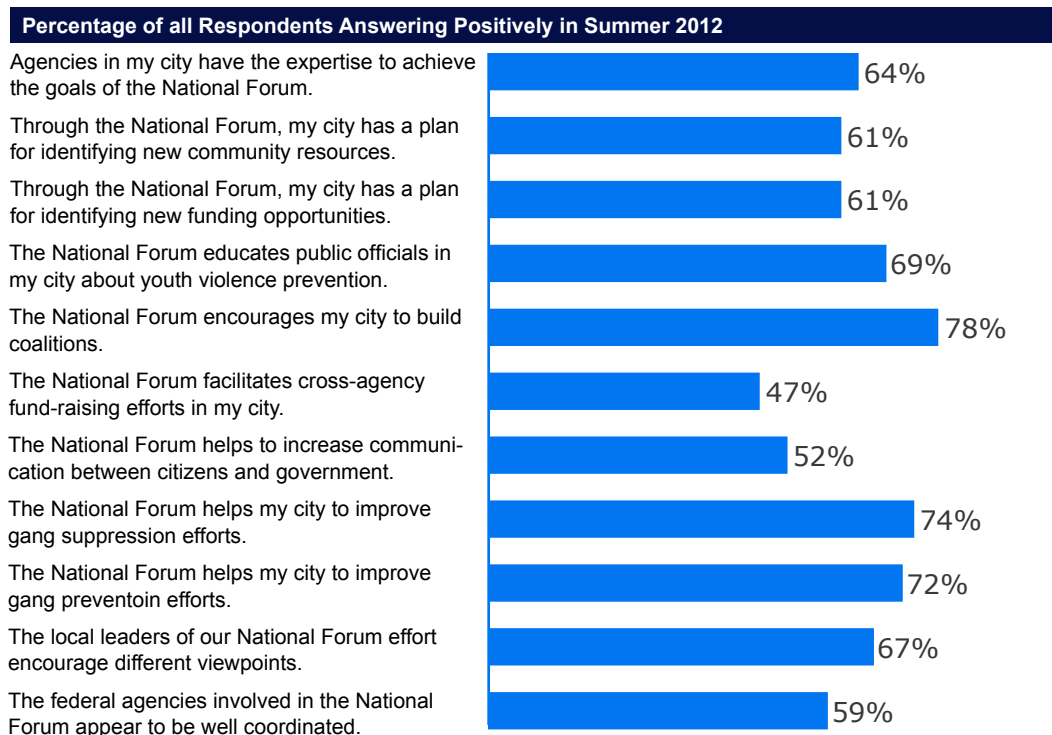
THE RESULTS |

The John Jay College and Temple University assessment team relied on stakeholder surveys to track perceptions and opinions about youth violence prevention in each community involved in the National Forum. Only fifteen months elapsed between the Summer 2011 and Summer 2012 surveys, and there would be little reason to expect large or significant improvements in such a short time period. Yet, on a number of survey items, the National Forum cities showed marked improvements.

PERCEPTIONS OF THE NATIONAL FORUM

One of the first concepts explored by the assessment team was the extent to which participant cities supported the efforts of the National Forum itself. In other words, did individuals from the National Forum cities believe that they were benefiting by participating in the Forum, and did conditions in their communities seem to be improving? The responses overall were quite positive, and they did not change appreciably during the 15 months of survey coverage. In general, residents of the National Forum cities supported the efforts of the Forum (Figure 1).

Figure 1. Respondents Were Generally Positive About National Forum Efforts



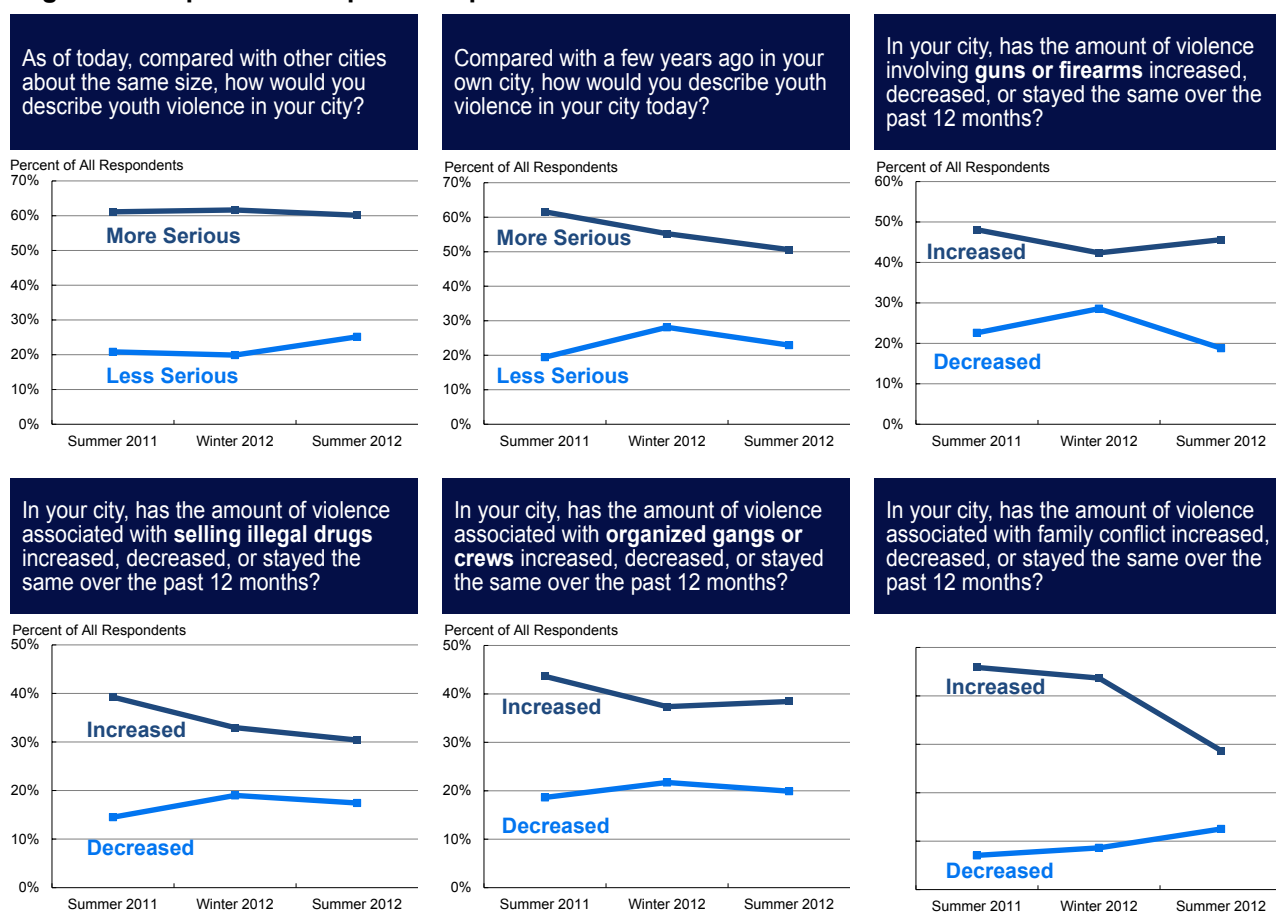
Percentages indicate the proportion of all respondents answering either "agree" or "strongly agree" to each item.

Between Summer 2011 and Summer 2012, many promising indicators of positive change appeared across all of the National Forum cities (Figure 2). When asked to consider youth violence in their communities today compared with a “few years ago,” for example, the percentage of respondents believing that today’s level of violence was “more serious” declined from 62 percent to 51 percent in just 15 months.

Perceptions of gun violence did not change appreciably during the same time period, but perceived levels of violence associated with drug sales, organized gangs, and family conflict all improved between the Summer 2011 and Summer 2012 surveys.

Positive perceptions of law enforcement grew between the Summer 2011 and Summer 2012 surveys. In the first survey, 49 percent of all respondents

Figure 2. Respondents Reported Improvements in Some Violence Indicators



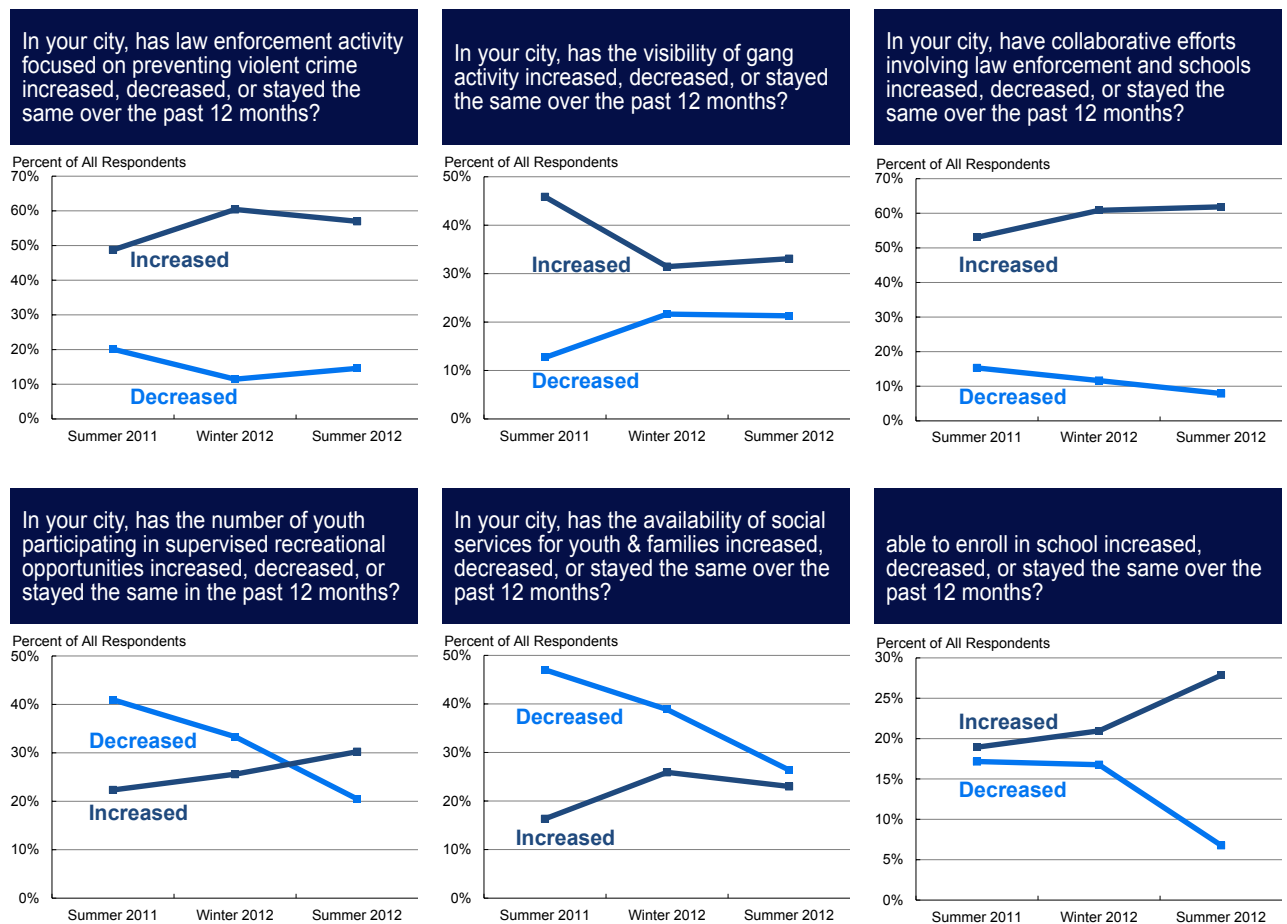
Note: Data are not displayed if respondents answered “neutral” or “stayed the same.”

believed that law enforcement efforts focused on youth violence had increased in the previous year. By the third survey, this perception was shared by 57 percent of all respondents.

Respondents were less likely to report increased visibility of gangs. In Summer 2012, 33 percent believed that gang activity had become more visible in their community, compared with 46 percent just 15 months earlier. All of the improvement, however, occurred between the Summer 2011 and Winter 2012 surveys, with a slight decline in Summer 2012.

Improvements were more striking in services and supports for youth and families (Figure 3). Respondents reported increasing numbers of youth able to participate in supervised activities, better availability of social services, and larger numbers of young people able to enroll in school. The proportion of respondents who reported growing school enrollments climbed from 19 percent in Summer 2011 to 28 percent in Summer 2012.

Figure 3. Some Indicators of Youth Services and Supports Improved



Note: Data are not displayed if respondents answered "neutral" or "stayed the same."

FACTOR ANALYSIS

Examining more than 100 survey items across three time periods and in five different cities becomes unwieldy. The assessment team calculated the previously described factor scores to facilitate interpretation of the survey findings.

To create comparable, interpretable scores for each individual respondent across all 15 factors, the research team calculated a mean response score for each individual on each factor. The number of items in each factor varied, ranging from just two items to as many as 10 items. Researchers first standardized the responses by converting each item to scale in which higher values reflect more positive opinions. Only valid items were used in the calculation of mean scores. In other words, if an individual respondent completed only nine out of the 10 items on a particular factor, his or her mean score for that factor is based on just those nine valid responses.

Researchers computed reliability coefficient (Cronbach's α) for each factor to assess the inter-item reliability of the score, or the extent to which the analysis could treat the group as one measure. The coefficients may be interpreted as a measure of the total correlation among all of the items that make up a factor. Higher values (i.e., those approaching 1.0) indicate greater internal consistency for the factor. The alpha coefficients for the factors used in the assessment project indicated acceptable reliabilities, ranging from .650 to .943 across all three surveys. Each factor's reliability score remained relatively consistent across each survey (varying up to 0.112), which contributed to the development and finalization of the study's factor structure.

TESTING FOR STATISTICAL SIGNIFICANCE

Once each individual's mean score was calculated for each factor, group means were calculated. These included the total group mean for all respondents as well as group means by city. A series of independent-sample *t*-tests were conducted to assess the changes in scores between the Summer 2011 and Summer 2012 surveys, both for the entire respondent sample as well as within each city. A *t*-test is used to determine whether the change in a group mean between 2011 and 2012 is significantly different from zero, or from no change at all. A probability level of ($p < 0.10$) is used as the threshold to signify that a difference in means is, in fact, statistically significant and not likely to be the result of chance variation alone.

After all of the *t*-tests were completed, the finite population correction (as described above) was applied to adjust the variances and to determine which changes in mean scores were significant for each sample of respondents. Again, the finite population correction was employed because each city's survey sample was created under the assumption that there is a finite number of ideal informants in each city, rather than an infinite population of people who could complete the survey. Separate finite population corrections were applied in each city as well as in the sample as a whole.


After the finite population corrections were applied, there were six factor scores that changed significantly across the entire sample. These included Community Capacity for Change, Communication and Goal Setting, Opportunities for Youth, Law Enforcement Efficacy, Decrease in Perceived Violence, and the Multidisciplinary Focus of the National Forum effort. In each of these factors, the mean score in the Summer 2012 survey was significantly better than the score obtained in Summer 2011 (Table 4).


Table 4. Across the Five National Forum Cities, Several Factors Improved Significantly Between the Summer 2011 and Summer 2012 Surveys

Factors in All National Forum Cities	Mean Factor Scores			Total Change	
	Summer 2011	Winter 2012	Summer 2012	Significant*	Linear**
1. Community Capacity for Prevention	3.33	3.43	3.51	*	**
2. Communication and Goal Setting	3.83	3.87	3.97	*	**
3. Organizational Collaboration	4.17	4.18	4.14		
4. Opportunities for Youth	2.72	2.90	3.03	*	**
5. Law Enforcement Efficacy	3.67	3.97	3.95	*	
6. Decrease in Perceived Violence	2.50	2.73	2.67	*	
7. National Forum Efficacy	3.83	3.73	3.79		
8. Community Leadership	3.64	3.64	3.65		**
9. Community Expertise	3.58	3.67	3.61		
10. Multidisciplinary Focus	3.47	3.54	3.61	*	**
11. Diverse Perspectives	4.00	4.07	3.95		
12. Personal Commitment	4.33	4.39	4.30		
13. Agency Commitment	4.10	4.23	4.18		
14. Data Driven Orientation	4.14	4.16	4.11		
15. Strategic Planning	4.01	4.06	4.05		

* Change from Summer 2011 to Summer 2012 is statistically significant ($p < .10$ with finite population correction applied).

** Change considered linear if the Winter 2012 mean score lies between the scores of Summer 2011 and Summer 2012.

 Significant and linear **positive** change

 Significant and linear **negative** change

The strongest indications of improvement may be those factor scores that showed a statistically significant increase between Summer 2011 and Summer 2012 **and** a linear increase across all three surveys. There was a significant linear increase among all cities combined in perceptions of Community Capacity for Prevention, as well as Communication and Goal Setting, between Summer 2011 and Summer 2012. Community Capacity for Prevention increased from 3.33 to 3.51, while Communication and Goal Setting increased from 3.83 to 3.97. Both increases were statistically significant and linear. Opportunities for Youth and Multidisciplinary Focus were also linear and statistically significant for all cities between Summer 2011 and Summer 2012, with Opportunities for Youth increasing from 2.72 to 3.03 and Multidisciplinary Focus increasing from 3.47 to 3.61.

Changes in Law Enforcement Efficacy and the Decrease in Perceived Violence were statistically significant but not linear. Between Summer and Winter 2011, for example, perceived law enforcement efficacy increased from 3.67 to 3.97, but the score dropped slightly to 3.95 in Winter 2012. Decrease in Perceived Violence improved from 2.50 to 2.73 between Summer and Winter 2011, but the score fell slightly to 2.67 in Summer 2012.

CITY SPECIFIC CHANGES

There are a number of challenges involved in using the same factor score methodology to consider changes at the city level. The most pressing challenges are: 1) the inherently smaller sample sizes, and 2) the differential attrition rates between cities — i.e., some cities had a more difficult time maintaining their response rates in the second and third administration of the surveys. In addition, each of the cities began the series of surveys at different points in terms of capacity and organization. The assessment team's surveys measure the perceptions of local officials and individual professionals and community members. A city that began the surveys at a lower point (i.e., with more shared frustrations and dissatisfaction) might realize stronger gains than a city starting out with higher levels of satisfaction. Mindful of this caution, the assessment team examined change patterns within each of the individual cities involved in the National Forum.

Using the same approach to examine the degree of change in each city, it is apparent that the progress made by the local team in each community varies considerably. In Boston, for example, two of the change indices improved significantly and linearly between Summer 2011 and Summer 2012 (Table 5). The Community Capacity for Prevention score climbed from 3.55 to 3.83, and the Communication and Goal Setting score grew from 3.70 to 3.98. Boston's

Table 5. Boston Respondents Reported Improvements in Community Capacity and Communication and Goal Setting, but Lower Scores on Overall Efficacy

Factors in Boston, Massachusetts	Mean Factor Scores			Total Change	
	Summer 2011	Winter 2012	Summer 2012	Significant*	Linear**
1. Community Capacity for Prevention	3.55	3.78	3.83	*	**
2. Communication and Goal Setting	3.70	3.79	3.98	*	**
3. Organizational Collaboration	4.12	4.21	4.14		
4. Opportunities for Youth	3.14	3.60	3.41	*	
5. Law Enforcement Efficacy	3.91	4.24	4.00		
6. Decrease in Perceived Violence	2.61	3.44	3.45	*	
7. National Forum Efficacy	3.79	3.75	3.66	*	**
8. Community Leadership	3.78	3.81	3.77		
9. Community Expertise	4.06	4.09	3.84	*	
10. Multidisciplinary Focus	3.32	3.36	3.45		**
11. Diverse Perspectives	3.90	3.99	3.86		
12. Personal Commitment	4.43	4.40	4.30		**
13. Agency Commitment	4.00	4.22	4.09		
14. Data Driven Orientation	4.25	4.21	4.20		**
15. Strategic Planning	4.09	4.12	4.22		**

Table 6. Respondents in Detroit Reported the Most Improvement Among all the National Forum Cities, with Strong Increases in Five Factors

Factors in Detroit, Michigan	Mean Factor Scores			Total Change	
	Summer 2011	Winter 2012	Summer 2012	Significant*	Linear**
1. Community Capacity for Prevention	2.81	2.99	3.23	*	**
2. Communication and Goal Setting	3.63	3.83	3.89		**
3. Organizational Collaboration	3.96	4.25	4.35	*	**
4. Opportunities for Youth	2.46	2.52	2.86	*	**
5. Law Enforcement Efficacy	3.86	4.35	4.28	*	
6. Decrease in Perceived Violence	2.15	1.77	2.35		
7. National Forum Efficacy	3.66	3.71	3.92	*	**
8. Community Leadership	3.44	3.55	3.55		
9. Community Expertise	3.23	3.34	3.35		**
10. Multidisciplinary Focus	3.25	3.28	3.52	*	**
11. Diverse Perspectives	4.19	4.17	4.15		**
12. Personal Commitment	4.41	4.55	4.54		
13. Agency Commitment	3.89	4.13	4.22		**
14. Data Driven Orientation	4.08	4.08	4.09		**
15. Strategic Planning	3.87	3.93	4.08		**

* Change from Summer 2011 to Summer 2012 is statistically significant ($p < .10$ with finite population correction applied).

** Change considered linear if the Winter 2012 mean score lies between the scores of Summer 2011 and Summer 2012.

Significant and linear **positive** change

Significant and linear **negative** change

Table 7. Memphis Respondents Indicated Significant and Linear Improvements in the National Forum's Efforts to Facilitate Greater Opportunities for Youth

Factors in Memphis, Tennessee	Mean Factor Scores			Total Change	
	Summer 2011	Winter 2012	Summer 2012	Significant*	Linear**
1. Community Capacity for Prevention	3.25	3.19	3.25		
2. Communication and Goal Setting	3.93	3.75	3.88		
3. Organizational Collaboration	4.47	4.21	4.07	*	**
4. Opportunities for Youth	2.53	2.63	2.92	*	**
5. Law Enforcement Efficacy	4.05	4.12	4.25		**
6. Decrease in Perceived Violence	2.60	2.50	2.50		**
7. National Forum Efficacy	3.86	3.62	3.80		
8. Community Leadership	3.59	3.50	3.65		
9. Community Expertise	3.50	3.57	3.64		**
10. Multidisciplinary Focus	3.55	3.59	3.54		
11. Diverse Perspectives	4.19	4.13	4.10		**
12. Personal Commitment	4.46	4.40	4.23		**
13. Agency Commitment	4.13	4.35	4.19		
14. Data Driven Orientation	4.25	4.17	4.31		
15. Strategic Planning	3.92	3.78	3.88		

Table 8. Salinas Reported Positive Changes in the City's Multidisciplinary Focus, but Other Factors Declined Between Summer 2011 and Summer 2012

Factors in Salinas, California	Mean Factor Scores			Total Change	
	Summer 2011	Winter 2012	Summer 2012	Significant*	Linear**
1. Community Capacity for Prevention	3.45	3.62	3.50		
2. Communication and Goal Setting	3.82	3.96	3.99		**
3. Organizational Collaboration	4.36	4.25	4.15		**
4. Opportunities for Youth	2.77	3.07	2.95		
5. Law Enforcement Efficacy	3.98	4.03	4.03		**
6. Decrease in Perceived Violence	3.37	3.84	3.00	*	
7. National Forum Efficacy	3.90	3.78	3.83	*	
8. Community Leadership	3.58	3.58	3.58		
9. Community Expertise	3.48	3.59	3.47		
10. Multidisciplinary Focus	3.65	3.81	3.78	*	
11. Diverse Perspectives	3.84	3.96	3.83		
12. Personal Commitment	4.16	4.19	4.20		**
13. Agency Commitment	4.19	4.14	4.29		
14. Data Driven Orientation	3.94	4.09	3.94		
15. Strategic Planning	3.96	4.21	3.88	*	

* Change from Summer 2011 to Summer 2012 is statistically significant ($p < .10$ with finite population correction applied).

** Change considered linear if the Winter 2012 mean score lies between the scores of Summer 2011 and Summer 2012.

Significant and linear **positive** change

Significant and linear **negative** change

Table 9. San Jose Respondents Reported Strong Improvements in Law Enforcement Efficacy and the Multidisciplinary Focus of the National Forum

Factors in San Jose, California	Mean Factor Scores			Total Change	
	Summer 2011	Winter 2012	Summer 2012	Significant*	Linear**
1. Community Capacity for Prevention	3.47	3.62	3.68		**
2. Communication and Goal Setting	4.10	4.12	4.14		**
3. Organizational Collaboration	3.89	3.91	3.93		**
4. Opportunities for Youth	2.62	2.57	2.97	*	
5. Law Enforcement Efficacy	2.44	2.74	2.96	*	**
6. Decrease in Perceived Violence	1.55	2.10	1.64		
7. National Forum Efficacy	4.00	3.88	3.76		**
8. Community Leadership	4.08	3.90	3.73	*	
9. Community Expertise	3.66	3.97	3.89	*	
10. Multidisciplinary Focus	3.57	3.82	3.85	*	**
11. Diverse Perspectives	3.82	4.09	3.89		
12. Personal Commitment	4.12	4.41	4.13		
13. Agency Commitment	4.36	4.46	4.01		
14. Data Driven Orientation	4.32	4.42	4.14		
15. Strategic Planning	4.45	4.45	4.28		**

* Change from Summer 2011 to Summer 2012 is statistically significant ($p < .10$ with finite population correction applied).

** Change considered linear if the Winter 2012 mean score lies between the scores of Summer 2011 and Summer 2012.

 Significant and linear **positive** change  Significant and linear **negative** change

perception of its National Forum Efficacy, however, actually dropped from 3.79 to 3.66, a statistically significant and linear decline. The perception of Community Expertise also fell in Boston, from 4.06 in Summer 2011 to 3.84 in Summer 2012, although the score had increased slightly in Winter 2012. The pattern of change in Boston could be interpreted as a reflection of the city's high expectations for violence reduction, as suggested above.

Detroit had the strongest performance of all five cities (Table 6). Six of the 15 factor scores in Detroit improved between Summer 2011 and 2012, and five of those six increased in a linear fashion. The sixth score, Law Enforcement Efficacy dipped slightly between Winter and Summer 2012, but the total increase over 15 months was still statistically significant (from 3.86 to 4.28). Only one of the 15 factor scores in Detroit was lower in Summer 2012 than it had been in Summer 2011 (Diverse Perspectives). Altogether, the survey results suggest that Detroit's participation in the National Forum was having strong and relatively consistent effects on community perceptions.

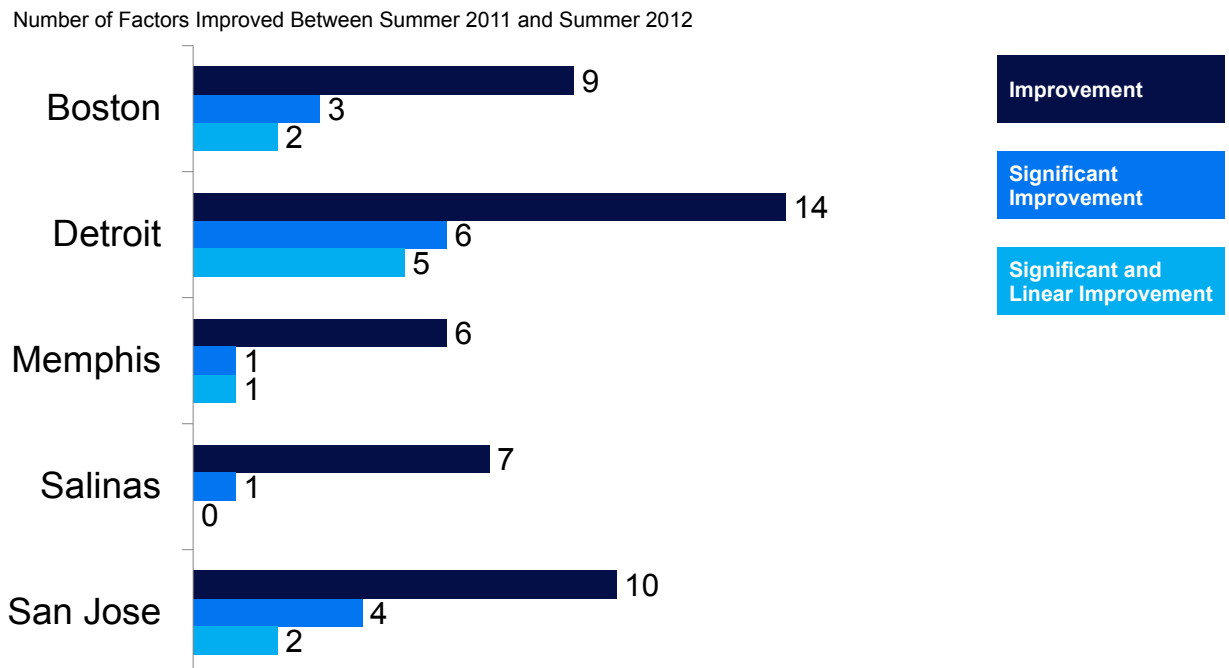
In the remaining three cities, the survey results were more mixed (Figure 4). In Memphis, for example, respondents were significantly more positive about

Opportunities for Youth, but the city's score for Organizational Collaboration dropped between Summer 2011 and Summer 2012 (Table 7). Other factor scores improved consistently over the first 15 months of implementation, but the differences failed to reach the level of statistical significance. For instance, Law Enforcement Efficacy grew from 4.05 to 4.25, while the perceptions of Community Expertise increased from 3.50 to 3.64.

In Salinas, four factors changed enough between Summer 2011 and Summer 2012 to register as statistically significant (Table 8). Only one of these scores, however, changed in a positive direction. The mean score for the city's Multidisciplinary Focus climbed from 3.65 in Summer 2011 to 3.78 in Summer 2012. The other three scores with significant changes actually declined.

Survey respondents in San Jose reported statistically significant improvements in four of the factors: Opportunities for Youth, Community Expertise, Law Enforcement Efficacy, and Multidisciplinary Focus (Table 9). The last two of these scores improved significantly and in a linear fashion.

Figure 4. Every National Forum City Reported Significant Improvement in at Least One Factor



Scores are considered improved as long as the mean value in Summer 2012 was higher than the mean value in Summer 2011, regardless of the size or significance of the total difference.

Figure 5. Across All Cities, Respondents Reported the Strongest Improvements in Opportunities for Youth and the Multidisciplinary Focus of their Efforts

Factors Measured in All Cities	Cities Reporting Significant Improvement*	Cities Reporting Significant and Linear Improvement**
1. Community Capacity for Prevention	2	2
2. Communication and Goal Setting	1	1
3. Organizational Collaboration	1	1
4. Opportunities for Youth	4	2
5. Law Enforcement Efficacy	2	1
6. Decrease in Perceived Violence	1	0
7. National Forum Efficacy	1	1
8. Community Leadership	0	0
9. Community Expertise	1	0
10. Multidisciplinary Focus	3	2
11. Diverse Perspectives	0	0
12. Personal Commitment	0	0
13. Agency Commitment	0	0
14. Data Driven Orientation	0	0
15. Strategic Planning	0	0

* Change from Summer 2011 to Summer 2012 is statistically significant ($p < .10$ with finite population correction applied).

** Change considered linear if the Winter 2012 mean score lies between the scores of Summer 2011 and Summer 2012.

CONCLUSIONS |

The efforts inspired by the National Forum on Youth Violence Prevention will naturally take time to develop, but survey results from the first 15 months of implementation suggest that the initiative may be generating some important changes. In these five communities, respondents report a number of potentially valuable improvements (Figure 5). The survey results imply that the cities involved in the National Forum may be increasing local opportunities for youth and improving the extent to which violence prevention approaches draw upon the perspectives and expertise of a broad range of community members. In addition, there are indications that some cities are developing better overall capacity to reduce youth violence, and that local perceptions of law enforcement efficacy may be improving. Obviously, more detailed research would be needed to identify the exact connections between the efforts of the National Forum and the dynamics of change in each participating city, but these early results suggest that the goals pursued by the National Forum may be effective in creating better partnerships across communities that work together to reduce and prevent youth violence.

APPENDIX

National Forum Implementation Assessment Survey

(Print Version)

Introduction and Informed Consent

Welcome to the Community Assessment Survey sponsored by the National Forum on Youth Violence Prevention. You have been selected by members of your own community to participate in this survey because you have experience or knowledge about the quality of youth services and/or efforts to prevent violence in your city.

This survey is being conducted in support of the National Forum on Youth Violence Prevention (<http://tinyurl.com/nationalforum>).

It is not necessary, however, for you to know anything about the National Forum or its work. The survey can be answered by anyone with an opinion about efforts to prevent youth violence in your community.

The survey was designed and implemented by researchers at John Jay College of Criminal Justice and Temple University.

Your participation in this survey is completely voluntary. If you decide to participate, the survey should take about 20 minutes.

We do not believe that the survey poses any risk or discomfort for you. All of your answers will be kept confidential and no identifying information about you or your answers will be disclosed to anyone outside the research team.

Survey results will be reported in aggregate form only. The potential benefits of this research are that you will be contributing to knowledge about youth violence prevention and reduction for your community and/or your organization.

If you have any questions or concerns about the survey, contact the survey coordinator:

Ms. Kathleen Tomberg
Research and Evaluation Center
John Jay College of Criminal Justice
555 West 57th Street, Suite 605
New York, NY 10019
212.484.1331
ktomberg@jjay.cuny.edu

Your signature below means that you have read this information and that you fully understand the nature and consequences of participation. It also means that you agree to participate in this research voluntarily with the knowledge that you are free to withdraw your consent and end your participation at any time without any consequence.

Participant Name Participant Signature

Date

NOTE: When you were invited to complete the survey, you should have been provided with your own ID number. You will be asked to enter this ID number on the 2nd page of the survey.

Thank you. Your participation in this survey is greatly appreciated.

Respondent Information

1. Please enter your 7digit ID number.

ID Number: _____

(If you do not have an ID number or have misplaced it, contact the survey coordinator listed on the previous page.)

2. Please enter today's date.

Today Month ____ / Day ____ / Year ____

3. Your age

- ☐ From 20 to 29 years
- ☐ From 30 to 39 years
- ☐ From 40 to 49 years
- ☐ From 50 to 59 years
- ☐ 60 years or older
- ☐ Prefer not to answer

4. Your sex

- ☐ Male
- ☐ Female
- ☐ Prefer not to answer

5. How do you describe yourself in terms of racial or ethnic identity?
(Check all that apply.)

- ☐ African American
- ☐ Caucasian or European Ancestry
- ☐ Hispanic / Latino
- ☐ American Indian
- ☐ Asian
- ☐ Pacific Islander
- ☐ Multiracial
- ☐ Prefer not to answer
- ☐ Other (please specify) _____

6. Your occupation or affiliation (as it relates to this survey). You may choose more than one answer if it helps to describe your occupation.

- | | |
|--|--|
| <input type="radio"/> Agency Administrator | <input type="radio"/> Law enforcement |
| <input type="radio"/> Attorney | <input type="radio"/> Probation Staff |
| <input type="radio"/> Business Person | <input type="radio"/> Program Director |
| <input type="radio"/> Community Organizer | <input type="radio"/> Prosecutor |
| <input type="radio"/> Court Staff | <input type="radio"/> Researcher |
| <input type="radio"/> Defense Attorney | <input type="radio"/> Resident |
| <input type="radio"/> Educator | <input type="radio"/> School Administrator |
| <input type="radio"/> Elected Official | <input type="radio"/> Social Worker |
| <input type="radio"/> Faith Leader | <input type="radio"/> Therapist |
| <input type="radio"/> Health Professional | <input type="radio"/> Youth |
| <input type="radio"/> Judge | <input type="radio"/> Youth Service Worker |
| <input type="radio"/> Judicial Officer | |
| <input type="radio"/> Other (please specify) _____ | |

Community Affiliation

The questions on the next page ask about groups and organizations in your community and how much interaction your organization has had with them in the past 6 months.

7. In which city do you work or reside, or for which city are you answering this survey?

- ☐ Boston, MA
- ☐ Chicago, IL
- ☐ Detroit, MI
- ☐ Memphis, TN
- ☐ Salinas, CA
- ☐ San Jose, CA

Note: Each respondent saw only those agencies in her or her community.

Boston Organizations

Thinking about just the past 6 months, how often did your organization or group interact with the following agencies. You may not know exactly, but please do your best to estimate the level of interaction between organizations.

Note: You will be asked two blocks of questions. The first block is about direct collaboration, and the second asks about the sharing of information and other resources.

8. In the past 6 months, how often did your organization or group collaborate with the following agencies to address youth violence by coordinating services and referrals for service, holding workshops, writing grant proposals, sponsoring community meetings, or other forms of direct collaboration.

	Never	Once or Twice	Monthly	Weekly or Daily
BCYF Streetworkers Program	<input type="radio"/>	<input type="radio"/>	<input type="radio"/>	<input type="radio"/>
Black Ministerial Alliance (BMA)	<input type="radio"/>	<input type="radio"/>	<input type="radio"/>	<input type="radio"/>
Boston Afterschool and Beyond	<input type="radio"/>	<input type="radio"/>	<input type="radio"/>	<input type="radio"/>
Boston Centers for Youth and Families	<input type="radio"/>	<input type="radio"/>	<input type="radio"/>	<input type="radio"/>
Boston Police Department	<input type="radio"/>	<input type="radio"/>	<input type="radio"/>	<input type="radio"/>
Boston Private Industry Council	<input type="radio"/>	<input type="radio"/>	<input type="radio"/>	<input type="radio"/>
Boston Public Health Commission	<input type="radio"/>	<input type="radio"/>	<input type="radio"/>	<input type="radio"/>
Boston Public Schools	<input type="radio"/>	<input type="radio"/>	<input type="radio"/>	<input type="radio"/>
Boston TenPoint Coalition	<input type="radio"/>	<input type="radio"/>	<input type="radio"/>	<input type="radio"/>
Bowdoin Street Health Center	<input type="radio"/>	<input type="radio"/>	<input type="radio"/>	<input type="radio"/>
Boys & Girls Clubs of Boston	<input type="radio"/>	<input type="radio"/>	<input type="radio"/>	<input type="radio"/>
City of Boston Office of Jobs & Community Services	<input type="radio"/>	<input type="radio"/>	<input type="radio"/>	<input type="radio"/>
Codman Square Health Center	<input type="radio"/>	<input type="radio"/>	<input type="radio"/>	<input type="radio"/>
Community Resources for Justice	<input type="radio"/>	<input type="radio"/>	<input type="radio"/>	<input type="radio"/>
Dorchester Youth Collaborative	<input type="radio"/>	<input type="radio"/>	<input type="radio"/>	<input type="radio"/>
Ecumenical Social Action Committee (ESAC)	<input type="radio"/>	<input type="radio"/>	<input type="radio"/>	<input type="radio"/>
Inquilinos Boricuas en Action (IBA)	<input type="radio"/>	<input type="radio"/>	<input type="radio"/>	<input type="radio"/>
Louis Brown Peace Institute	<input type="radio"/>	<input type="radio"/>	<input type="radio"/>	<input type="radio"/>
Massachusetts Department of Correction	<input type="radio"/>	<input type="radio"/>	<input type="radio"/>	<input type="radio"/>
Massachusetts Department of Probation	<input type="radio"/>	<input type="radio"/>	<input type="radio"/>	<input type="radio"/>
Massachusetts Department of Youth Services	<input type="radio"/>	<input type="radio"/>	<input type="radio"/>	<input type="radio"/>
MassHousing Safety Task Forces	<input type="radio"/>	<input type="radio"/>	<input type="radio"/>	<input type="radio"/>
Mayor's Youth Council	<input type="radio"/>	<input type="radio"/>	<input type="radio"/>	<input type="radio"/>
Morningstar Baptist Church	<input type="radio"/>	<input type="radio"/>	<input type="radio"/>	<input type="radio"/>
Muhammad Mosque of Islam #11	<input type="radio"/>	<input type="radio"/>	<input type="radio"/>	<input type="radio"/>
Project RIGHT	<input type="radio"/>	<input type="radio"/>	<input type="radio"/>	<input type="radio"/>
St. Peters Parish	<input type="radio"/>	<input type="radio"/>	<input type="radio"/>	<input type="radio"/>
Suffolk County District Attorney's Office	<input type="radio"/>	<input type="radio"/>	<input type="radio"/>	<input type="radio"/>
Suffolk County House of Corrections	<input type="radio"/>	<input type="radio"/>	<input type="radio"/>	<input type="radio"/>
Teen Empowerment	<input type="radio"/>	<input type="radio"/>	<input type="radio"/>	<input type="radio"/>
YMCA of Boston	<input type="radio"/>	<input type="radio"/>	<input type="radio"/>	<input type="radio"/>

	Never	Once or Twice	Monthly	Weekly or Daily
Youth Advocacy Project, Committee for Public Counsel Services	<input type="radio"/>	<input type="radio"/>	<input type="radio"/>	<input type="radio"/>
Youth Options Unlimited Boston	<input type="radio"/>	<input type="radio"/>	<input type="radio"/>	<input type="radio"/>
Youth Workers Alliance	<input type="radio"/>	<input type="radio"/>	<input type="radio"/>	<input type="radio"/>
YouthConnect	<input type="radio"/>	<input type="radio"/>	<input type="radio"/>	<input type="radio"/>
U.S. Department of Justice (e.g., OJJDP, NIJ, BJA, COPS)	<input type="radio"/>	<input type="radio"/>	<input type="radio"/>	<input type="radio"/>
U.S. Department of Education	<input type="radio"/>	<input type="radio"/>	<input type="radio"/>	<input type="radio"/>
U.S. Department of Labor	<input type="radio"/>	<input type="radio"/>	<input type="radio"/>	<input type="radio"/>
U.S. Department of Health and Human Services (e.g. CDC)	<input type="radio"/>	<input type="radio"/>	<input type="radio"/>	<input type="radio"/>
Other federal agencies	<input type="radio"/>	<input type="radio"/>	<input type="radio"/>	<input type="radio"/>

9. In the past 6 months, how often did your organization or group exchange resources, information, or funding with the following agencies?

	Never	Once or Twice	Monthly	Weekly or Daily
BCYF Streetworkers Program	<input type="radio"/>	<input type="radio"/>	<input type="radio"/>	<input type="radio"/>
Black Ministerial Alliance (BMA)	<input type="radio"/>	<input type="radio"/>	<input type="radio"/>	<input type="radio"/>
Boston Afterschool and Beyond	<input type="radio"/>	<input type="radio"/>	<input type="radio"/>	<input type="radio"/>
Boston Centers for Youth and Families	<input type="radio"/>	<input type="radio"/>	<input type="radio"/>	<input type="radio"/>
Boston Police Department	<input type="radio"/>	<input type="radio"/>	<input type="radio"/>	<input type="radio"/>
Boston Private Industry Council	<input type="radio"/>	<input type="radio"/>	<input type="radio"/>	<input type="radio"/>
Boston Public Health Commission	<input type="radio"/>	<input type="radio"/>	<input type="radio"/>	<input type="radio"/>
Boston Public Schools	<input type="radio"/>	<input type="radio"/>	<input type="radio"/>	<input type="radio"/>
Boston TenPoint Coalition	<input type="radio"/>	<input type="radio"/>	<input type="radio"/>	<input type="radio"/>
Bowdoin Street Health Center	<input type="radio"/>	<input type="radio"/>	<input type="radio"/>	<input type="radio"/>
Boys & Girls Clubs of Boston	<input type="radio"/>	<input type="radio"/>	<input type="radio"/>	<input type="radio"/>
City of Boston Office of Jobs & Community Services	<input type="radio"/>	<input type="radio"/>	<input type="radio"/>	<input type="radio"/>
Codman Square Health Center	<input type="radio"/>	<input type="radio"/>	<input type="radio"/>	<input type="radio"/>
Community Resources for Justice	<input type="radio"/>	<input type="radio"/>	<input type="radio"/>	<input type="radio"/>
Dorchester Youth Collaborative	<input type="radio"/>	<input type="radio"/>	<input type="radio"/>	<input type="radio"/>
Ecumenical Social Action Committee (ESAC)	<input type="radio"/>	<input type="radio"/>	<input type="radio"/>	<input type="radio"/>
Inquilinos Boricuas en Action (IBA)	<input type="radio"/>	<input type="radio"/>	<input type="radio"/>	<input type="radio"/>
Louis Brown Peace Institute	<input type="radio"/>	<input type="radio"/>	<input type="radio"/>	<input type="radio"/>
Massachusetts Department of Correction	<input type="radio"/>	<input type="radio"/>	<input type="radio"/>	<input type="radio"/>
Massachusetts Department of Probation	<input type="radio"/>	<input type="radio"/>	<input type="radio"/>	<input type="radio"/>
Massachusetts Department of Youth Services	<input type="radio"/>	<input type="radio"/>	<input type="radio"/>	<input type="radio"/>
MassHousing Safety Task Forces	<input type="radio"/>	<input type="radio"/>	<input type="radio"/>	<input type="radio"/>
Mayor's Youth Council	<input type="radio"/>	<input type="radio"/>	<input type="radio"/>	<input type="radio"/>
Morningstar Baptist Church	<input type="radio"/>	<input type="radio"/>	<input type="radio"/>	<input type="radio"/>
Muhammad Mosque of Islam #11	<input type="radio"/>	<input type="radio"/>	<input type="radio"/>	<input type="radio"/>
Project RIGHT	<input type="radio"/>	<input type="radio"/>	<input type="radio"/>	<input type="radio"/>
St. Peters Parish	<input type="radio"/>	<input type="radio"/>	<input type="radio"/>	<input type="radio"/>

	Never	Once or Twice	Monthly	Weekly or Daily
Suffolk County District Attorney's Office	<input type="radio"/>	<input type="radio"/>	<input type="radio"/>	<input type="radio"/>
Suffolk County House of Corrections	<input type="radio"/>	<input type="radio"/>	<input type="radio"/>	<input type="radio"/>
Teen Empowerment	<input type="radio"/>	<input type="radio"/>	<input type="radio"/>	<input type="radio"/>
YMCA of Boston	<input type="radio"/>	<input type="radio"/>	<input type="radio"/>	<input type="radio"/>
Youth Advocacy Project, Committee for Public Counsel Services	<input type="radio"/>	<input type="radio"/>	<input type="radio"/>	<input type="radio"/>
Youth Options Unlimited Boston	<input type="radio"/>	<input type="radio"/>	<input type="radio"/>	<input type="radio"/>
Youth Workers Alliance	<input type="radio"/>	<input type="radio"/>	<input type="radio"/>	<input type="radio"/>
YouthConnect	<input type="radio"/>	<input type="radio"/>	<input type="radio"/>	<input type="radio"/>
U.S. Department of Justice (e.g., OJJDP, NIJ, BJA, COPS)	<input type="radio"/>	<input type="radio"/>	<input type="radio"/>	<input type="radio"/>
U.S. Department of Education	<input type="radio"/>	<input type="radio"/>	<input type="radio"/>	<input type="radio"/>
U.S. Department of Labor	<input type="radio"/>	<input type="radio"/>	<input type="radio"/>	<input type="radio"/>
U.S. Department of Health and Human Services (e.g. CDC)	<input type="radio"/>	<input type="radio"/>	<input type="radio"/>	<input type="radio"/>
Other federal agencies	<input type="radio"/>	<input type="radio"/>	<input type="radio"/>	<input type="radio"/>

General Perceptions of Youth Violence

Next, please indicate how serious the youth violence problem is in your community.

10. As of today, compared with other cities about the same size, how would you describe youth violence in your city?

- ☐ Much More Serious
- ☐ Somewhat More Serious
- ☐ About the Same
- ☐ Somewhat Less Serious
- ☐ Much Less Serious
- ☐ Don't Know

11. Compared with a few years ago in your own city, how would you describe youth violence in your city today?

- ☐ Much More Serious
- ☐ Somewhat More Serious
- ☐ About the Same
- ☐ Somewhat Less Serious
- ☐ Much Less Serious
- ☐ Don't Know

12. In your city, please indicate whether the following things have increased, decreased, or stayed the same over the past 12 months:

	Increased	Stayed About the Same	Decreased	Don't Know
The overall amount of violence.	<input type="radio"/>	<input type="radio"/>	<input type="radio"/>	<input type="radio"/>
The amount of violence involving guns or firearms.	<input type="radio"/>	<input type="radio"/>	<input type="radio"/>	<input type="radio"/>
The amount of violence associated with selling illegal drugs.	<input type="radio"/>	<input type="radio"/>	<input type="radio"/>	<input type="radio"/>
The amount of violence associated with organized gangs or crews.	<input type="radio"/>	<input type="radio"/>	<input type="radio"/>	<input type="radio"/>
The amount of violence associated with family conflicts.	<input type="radio"/>	<input type="radio"/>	<input type="radio"/>	<input type="radio"/>
Other forms of violence Specify: _____	<input type="radio"/>	<input type="radio"/>	<input type="radio"/>	<input type="radio"/>

Perceptions of Community Resources

13. In your city, please indicate whether the following things have increased, decreased, or stayed the same over the past 12 months:

	Increased	Stayed About the Same	Decreased	Don't Know
Youth participating in supervised recreational activities.	<input type="radio"/>	<input type="radio"/>	<input type="radio"/>	<input type="radio"/>
The availability of social services for youth and families.	<input type="radio"/>	<input type="radio"/>	<input type="radio"/>	<input type="radio"/>
Youth able to enroll in school.	<input type="radio"/>	<input type="radio"/>	<input type="radio"/>	<input type="radio"/>
Collaborative efforts involving law enforcement and schools.	<input type="radio"/>	<input type="radio"/>	<input type="radio"/>	<input type="radio"/>
Law enforcement activity focused on preventing violent crime.	<input type="radio"/>	<input type="radio"/>	<input type="radio"/>	<input type="radio"/>
Youth able to obtain paid employment.	<input type="radio"/>	<input type="radio"/>	<input type="radio"/>	<input type="radio"/>
The visibility of gang activity.	<input type="radio"/>	<input type="radio"/>	<input type="radio"/>	<input type="radio"/>

14. Thinking about your own organization or group, please indicate whether the following things have increased, decreased, or stayed the same over the past few months.

	Increased	Stayed About the Same	Decreased	Don't Know
Our exchange of information with other organizations working to prevent youth violence.	<input type="radio"/>	<input type="radio"/>	<input type="radio"/>	<input type="radio"/>
Our efforts to coordinate our services with those of other organizations working to prevent youth violence.	<input type="radio"/>	<input type="radio"/>	<input type="radio"/>	<input type="radio"/>
Our involvement in community efforts to reduce youth violence.	<input type="radio"/>	<input type="radio"/>	<input type="radio"/>	<input type="radio"/>
Our sharing of resources (e.g. equipment, supplies) with other organizations working to prevent youth violence.	<input type="radio"/>	<input type="radio"/>	<input type="radio"/>	<input type="radio"/>
Our support for community leaders working to prevent violence, even when we have no financial ties.	<input type="radio"/>	<input type="radio"/>	<input type="radio"/>	<input type="radio"/>
Our referrals either to or from other organizations working to prevent youth violence.	<input type="radio"/>	<input type="radio"/>	<input type="radio"/>	<input type="radio"/>
Our involvement or even cosponsoring events with other organizations working to prevent youth violence.	<input type="radio"/>	<input type="radio"/>	<input type="radio"/>	<input type="radio"/>
Our willingness to undertake joint projects with other organizations working to prevent youth violence.	<input type="radio"/>	<input type="radio"/>	<input type="radio"/>	<input type="radio"/>
Our collaborative efforts with other groups and organizations working to reduce violence.	<input type="radio"/>	<input type="radio"/>	<input type="radio"/>	<input type="radio"/>

15. Please indicate whether you agree or disagree with the following statements about your organization or group.

	Agree Strongly	Agree Somewhat	Neutral	Disagree Somewhat	Disagree Strongly	Don't Know
My colleagues are well informed about youth violence prevention programs in our community.	<input type="radio"/>	<input type="radio"/>	<input type="radio"/>	<input type="radio"/>	<input type="radio"/>	<input type="radio"/>
Preventing youth violence is part of our mission.	<input type="radio"/>	<input type="radio"/>	<input type="radio"/>	<input type="radio"/>	<input type="radio"/>	<input type="radio"/>
In general, my organization knows how to help youth access the services and supports they need.	<input type="radio"/>	<input type="radio"/>	<input type="radio"/>	<input type="radio"/>	<input type="radio"/>	<input type="radio"/>

16. Please indicate whether you agree or disagree with the following statements about how individuals and agencies in your city come together to prevent youth violence.

	Agree Strongly	Agree Somewhat	Neutral	Disagree Somewhat	Disagree Strongly	Don't Know
Our public officials generally support recommendations made by community groups.	<input type="radio"/>	<input type="radio"/>	<input type="radio"/>	<input type="radio"/>	<input type="radio"/>	<input type="radio"/>
We set aside our individual interests to achieve common goals.	<input type="radio"/>	<input type="radio"/>	<input type="radio"/>	<input type="radio"/>	<input type="radio"/>	<input type="radio"/>
We have leaders who support our efforts to collaborate.	<input type="radio"/>	<input type="radio"/>	<input type="radio"/>	<input type="radio"/>	<input type="radio"/>	<input type="radio"/>
We listen to everyone's opinion.	<input type="radio"/>	<input type="radio"/>	<input type="radio"/>	<input type="radio"/>	<input type="radio"/>	<input type="radio"/>
We work hard to establish a credible, open process.	<input type="radio"/>	<input type="radio"/>	<input type="radio"/>	<input type="radio"/>	<input type="radio"/>	<input type="radio"/>
We are inspired to be action-oriented.	<input type="radio"/>	<input type="radio"/>	<input type="radio"/>	<input type="radio"/>	<input type="radio"/>	<input type="radio"/>
I am confident that my city's efforts will have a real impact on youth violence.	<input type="radio"/>	<input type="radio"/>	<input type="radio"/>	<input type="radio"/>	<input type="radio"/>	<input type="radio"/>
We have an effective decision making process.	<input type="radio"/>	<input type="radio"/>	<input type="radio"/>	<input type="radio"/>	<input type="radio"/>	<input type="radio"/>
We discuss whether we are working together effectively.	<input type="radio"/>	<input type="radio"/>	<input type="radio"/>	<input type="radio"/>	<input type="radio"/>	<input type="radio"/>
Our planning process helps us to set aside our doubts and skepticism.	<input type="radio"/>	<input type="radio"/>	<input type="radio"/>	<input type="radio"/>	<input type="radio"/>	<input type="radio"/>

17. Please indicate whether you agree or disagree with the following statements about violence prevention efforts in your city.

	Agree Strongly	Agree Somewhat	Neutral	Disagree Somewhat	Disagree Strongly	Don't Know
People generally come together to work on the issue.	<input type="radio"/>	<input type="radio"/>	<input type="radio"/>	<input type="radio"/>	<input type="radio"/>	<input type="radio"/>
Organizations in my city work together effectively.	<input type="radio"/>	<input type="radio"/>	<input type="radio"/>	<input type="radio"/>	<input type="radio"/>	<input type="radio"/>
My city does a good job of preventing violence before it occurs.	<input type="radio"/>	<input type="radio"/>	<input type="radio"/>	<input type="radio"/>	<input type="radio"/>	<input type="radio"/>
Law enforcement officials in my city are seen as outsiders.	<input type="radio"/>	<input type="radio"/>	<input type="radio"/>	<input type="radio"/>	<input type="radio"/>	<input type="radio"/>
My city does a good job of helping people coming out of prison.	<input type="radio"/>	<input type="radio"/>	<input type="radio"/>	<input type="radio"/>	<input type="radio"/>	<input type="radio"/>
My city does a good job of law enforcement.	<input type="radio"/>	<input type="radio"/>	<input type="radio"/>	<input type="radio"/>	<input type="radio"/>	<input type="radio"/>
We do NOT make much progress in my city because we can never agree.	<input type="radio"/>	<input type="radio"/>	<input type="radio"/>	<input type="radio"/>	<input type="radio"/>	<input type="radio"/>
Social agencies in my city are effective.	<input type="radio"/>	<input type="radio"/>	<input type="radio"/>	<input type="radio"/>	<input type="radio"/>	<input type="radio"/>
Troubled families in my city do NOT know where to go for help.	<input type="radio"/>	<input type="radio"/>	<input type="radio"/>	<input type="radio"/>	<input type="radio"/>	<input type="radio"/>
Youth do NOT have enough ways to participate in sports and other physical activities.	<input type="radio"/>	<input type="radio"/>	<input type="radio"/>	<input type="radio"/>	<input type="radio"/>	<input type="radio"/>
My city does a good job of involving people from the neighborhood.	<input type="radio"/>	<input type="radio"/>	<input type="radio"/>	<input type="radio"/>	<input type="radio"/>	<input type="radio"/>
Youth in my city know where to get educational help.	<input type="radio"/>	<input type="radio"/>	<input type="radio"/>	<input type="radio"/>	<input type="radio"/>	<input type="radio"/>
I am optimistic that we can make a difference.	<input type="radio"/>	<input type="radio"/>	<input type="radio"/>	<input type="radio"/>	<input type="radio"/>	<input type="radio"/>
Social agencies in my city are seriously underfunded.	<input type="radio"/>	<input type="radio"/>	<input type="radio"/>	<input type="radio"/>	<input type="radio"/>	<input type="radio"/>
Youth in my city know where to get help finding jobs.	<input type="radio"/>	<input type="radio"/>	<input type="radio"/>	<input type="radio"/>	<input type="radio"/>	<input type="radio"/>
Political leaders in my city understand the community's needs.	<input type="radio"/>	<input type="radio"/>	<input type="radio"/>	<input type="radio"/>	<input type="radio"/>	<input type="radio"/>
Community-wide awareness of youth violence has increased in my city.	<input type="radio"/>	<input type="radio"/>	<input type="radio"/>	<input type="radio"/>	<input type="radio"/>	<input type="radio"/>
My city does a good job of involving key stakeholders.	<input type="radio"/>	<input type="radio"/>	<input type="radio"/>	<input type="radio"/>	<input type="radio"/>	<input type="radio"/>
Political leaders do NOT understand what goes on in my community.	<input type="radio"/>	<input type="radio"/>	<input type="radio"/>	<input type="radio"/>	<input type="radio"/>	<input type="radio"/>
There are plenty of good things for youth to do after school.	<input type="radio"/>	<input type="radio"/>	<input type="radio"/>	<input type="radio"/>	<input type="radio"/>	<input type="radio"/>
My city is good at getting youth connected with the services and programs they need.	<input type="radio"/>	<input type="radio"/>	<input type="radio"/>	<input type="radio"/>	<input type="radio"/>	<input type="radio"/>
My city does a good job of intervening with youth already known to be violent.	<input type="radio"/>	<input type="radio"/>	<input type="radio"/>	<input type="radio"/>	<input type="radio"/>	<input type="radio"/>
Compared with a few years ago, there is greater public support in my city for efforts to prevent youth violence.	<input type="radio"/>	<input type="radio"/>	<input type="radio"/>	<input type="radio"/>	<input type="radio"/>	<input type="radio"/>

Knowledge of National Forum

18. Were you aware of the National Forum on Youth Violence Prevention before you were invited to respond to this survey?

- ☐ Yes – If yes, please continue on just a little more.
- ☐ No – If no, please continue on page 17.
- ☐ Don't Know / Not sure – If you don't know, please continue on page 17.

Perceptions of the National Forum

19. Please indicate whether you agree or disagree with the following statements about the National Forum on Youth Violence Prevention (NFYVP).

	Agree Strongly	Agree Somewhat	Neutral	Disagree Somewhat	Disagree Strongly	Don't Know
The National Forum helped us to see youth violence from different perspectives.	<input type="radio"/>	<input type="radio"/>	<input type="radio"/>	<input type="radio"/>	<input type="radio"/>	<input type="radio"/>
In my city, the National Forum is mainly a police effort.	<input type="radio"/>	<input type="radio"/>	<input type="radio"/>	<input type="radio"/>	<input type="radio"/>	<input type="radio"/>
The NFYVP is mainly another effort to increase gang suppression.	<input type="radio"/>	<input type="radio"/>	<input type="radio"/>	<input type="radio"/>	<input type="radio"/>	<input type="radio"/>
The National Forum is mainly a way to expand social services.	<input type="radio"/>	<input type="radio"/>	<input type="radio"/>	<input type="radio"/>	<input type="radio"/>	<input type="radio"/>
The NFYVP is helpful to my city in combating youth violence.	<input type="radio"/>	<input type="radio"/>	<input type="radio"/>	<input type="radio"/>	<input type="radio"/>	<input type="radio"/>
I plan to stay involved in the NFYVP as long as my city is involved.	<input type="radio"/>	<input type="radio"/>	<input type="radio"/>	<input type="radio"/>	<input type="radio"/>	<input type="radio"/>
The National Forum really brought together a diverse group of people and agencies in my city.	<input type="radio"/>	<input type="radio"/>	<input type="radio"/>	<input type="radio"/>	<input type="radio"/>	<input type="radio"/>
My personal involvement in the NFYVP is important to me.	<input type="radio"/>	<input type="radio"/>	<input type="radio"/>	<input type="radio"/>	<input type="radio"/>	<input type="radio"/>
The success of the NFYVP is important to me.	<input type="radio"/>	<input type="radio"/>	<input type="radio"/>	<input type="radio"/>	<input type="radio"/>	<input type="radio"/>
The NFYVP has NO real effect on my city's strategy for preventing violence.	<input type="radio"/>	<input type="radio"/>	<input type="radio"/>	<input type="radio"/>	<input type="radio"/>	<input type="radio"/>
The NFYVP helps my city to coordinate its violence prevention efforts.	<input type="radio"/>	<input type="radio"/>	<input type="radio"/>	<input type="radio"/>	<input type="radio"/>	<input type="radio"/>

Involvement in the National Forum

20. Is your organization or group part of the multi-agency team from your city that is participating in the National Forum on Youth Violence Prevention?

- ☐ Yes
- ☐ No
- ☐ Don't Know / Not sure

21. Are you part of the core team from your city that is participating in the National Forum on Youth Violence Prevention?

- ☐ Yes
- ☐ No
- ☐ Don't Know / Not sure

22. Did you attend the first Working Session that was held in Washington, DC in October 2010?

- ☐ Yes
- ☐ No
- ☐ Don't Know / Not sure

23. Did you attend the second National Forum Summit that was held in Washington, DC in April 2011?

- ☐ Yes
- ☐ No
- ☐ Don't Know / Not sure

24. In any given week, about how many hours of your time if any do you spend on the following activities to support the National Forum on Youth Violence Prevention?

	Under 1 Hour	1-3 Hours	4-8 Hours	Over 8 Hours	Don't Know
Phone calls and emails	<input type="radio"/>	<input type="radio"/>	<input type="radio"/>	<input type="radio"/>	<input type="radio"/>
General meetings	<input type="radio"/>	<input type="radio"/>	<input type="radio"/>	<input type="radio"/>	<input type="radio"/>
Committee meetings and other committee work	<input type="radio"/>	<input type="radio"/>	<input type="radio"/>	<input type="radio"/>	<input type="radio"/>
Preparing for meetings and other activities in general	<input type="radio"/>	<input type="radio"/>	<input type="radio"/>	<input type="radio"/>	<input type="radio"/>
Other (please specify) _____	<input type="radio"/>	<input type="radio"/>	<input type="radio"/>	<input type="radio"/>	<input type="radio"/>

25. Please indicate whether you agree or disagree with the following statements about the National Forum on Youth Violence Prevention?

	Agree Strongly	Agree Somewhat	Neutral	Disagree Somewhat	Disagree Strongly	Don't Know
The National Forum helps to increase communication between citizens and government in my city.	<input type="radio"/>	<input type="radio"/>	<input type="radio"/>	<input type="radio"/>	<input type="radio"/>	<input type="radio"/>
My city's efforts for the National Forum are dominated by just one or two organizations.	<input type="radio"/>	<input type="radio"/>	<input type="radio"/>	<input type="radio"/>	<input type="radio"/>	<input type="radio"/>
Organizations in my city have the expertise to improve gang suppression efforts.	<input type="radio"/>	<input type="radio"/>	<input type="radio"/>	<input type="radio"/>	<input type="radio"/>	<input type="radio"/>
The resources of organizations and agencies participating in the National Forum are NOT being used effectively.	<input type="radio"/>	<input type="radio"/>	<input type="radio"/>	<input type="radio"/>	<input type="radio"/>	<input type="radio"/>
Organizations in my city have the expertise to improve gang prevention efforts.	<input type="radio"/>	<input type="radio"/>	<input type="radio"/>	<input type="radio"/>	<input type="radio"/>	<input type="radio"/>
The National Forum facilitates cross-agency fundraising efforts in my city.	<input type="radio"/>	<input type="radio"/>	<input type="radio"/>	<input type="radio"/>	<input type="radio"/>	<input type="radio"/>
The National Forum increases the public's DISTRUST of government agencies in my city.	<input type="radio"/>	<input type="radio"/>	<input type="radio"/>	<input type="radio"/>	<input type="radio"/>	<input type="radio"/>
The federal agencies involved in the National Forum actually INHIBIT our progress.	<input type="radio"/>	<input type="radio"/>	<input type="radio"/>	<input type="radio"/>	<input type="radio"/>	<input type="radio"/>
My city's efforts through the National Forum include a plan for identifying new community resources.	<input type="radio"/>	<input type="radio"/>	<input type="radio"/>	<input type="radio"/>	<input type="radio"/>	<input type="radio"/>
Organizations in my city have the expertise to improve youth reentry.	<input type="radio"/>	<input type="radio"/>	<input type="radio"/>	<input type="radio"/>	<input type="radio"/>	<input type="radio"/>
The National Forum encourages my city to build coalitions.	<input type="radio"/>	<input type="radio"/>	<input type="radio"/>	<input type="radio"/>	<input type="radio"/>	<input type="radio"/>
The National Forum helps to educate public officials in my city about youth violence prevention and intervention.	<input type="radio"/>	<input type="radio"/>	<input type="radio"/>	<input type="radio"/>	<input type="radio"/>	<input type="radio"/>
The federal agencies involved in the National Forum appear to be well coordinated.	<input type="radio"/>	<input type="radio"/>	<input type="radio"/>	<input type="radio"/>	<input type="radio"/>	<input type="radio"/>
My city's National Forum leadership is good at diffusing conflict.	<input type="radio"/>	<input type="radio"/>	<input type="radio"/>	<input type="radio"/>	<input type="radio"/>	<input type="radio"/>
Agencies in my city LACK the expertise to achieve the goals of the National Forum.	<input type="radio"/>	<input type="radio"/>	<input type="radio"/>	<input type="radio"/>	<input type="radio"/>	<input type="radio"/>
Youth violence prevention efforts in my city are truly driven by our participation in the National Forum.	<input type="radio"/>	<input type="radio"/>	<input type="radio"/>	<input type="radio"/>	<input type="radio"/>	<input type="radio"/>
My city's efforts through the National Forum include a plan for identifying new funding opportunities.	<input type="radio"/>	<input type="radio"/>	<input type="radio"/>	<input type="radio"/>	<input type="radio"/>	<input type="radio"/>
The local leaders of the National Forum encourage different points of view in discussion.	<input type="radio"/>	<input type="radio"/>	<input type="radio"/>	<input type="radio"/>	<input type="radio"/>	<input type="radio"/>
My city's efforts through the National Forum aid in the development of smaller partner organizations.	<input type="radio"/>	<input type="radio"/>	<input type="radio"/>	<input type="radio"/>	<input type="radio"/>	<input type="radio"/>

26. In terms of "contacts per month" related to the National Forum, how much contact would you say you have had with partner agencies in the federal government, either through personal emails, phone calls, webinars, or face-to-face meetings?

	No Contacts	1-2 Contacts per month	3-9 Contacts per month	10+ Contacts per month
Centers for Disease Control and Prevention (CDC)	<input type="radio"/>	<input type="radio"/>	<input type="radio"/>	<input type="radio"/>
U.S. Department of Education	<input type="radio"/>	<input type="radio"/>	<input type="radio"/>	<input type="radio"/>
U.S. Department of Health and Human Services (HHS)	<input type="radio"/>	<input type="radio"/>	<input type="radio"/>	<input type="radio"/>
U.S. Department of Health and Human Services: Administration for Children and Families	<input type="radio"/>	<input type="radio"/>	<input type="radio"/>	<input type="radio"/>
U.S. Department of Housing and Urban Development (HUD)	<input type="radio"/>	<input type="radio"/>	<input type="radio"/>	<input type="radio"/>
U.S. Department of Justice: Bureau of Justice Assistance (BJA)	<input type="radio"/>	<input type="radio"/>	<input type="radio"/>	<input type="radio"/>
U.S. Department of Justice: Community Oriented Policing Services (COPS Office)	<input type="radio"/>	<input type="radio"/>	<input type="radio"/>	<input type="radio"/>
U.S. Department of Justice: National Institute of Justice (NIJ)	<input type="radio"/>	<input type="radio"/>	<input type="radio"/>	<input type="radio"/>
U.S. Department of Justice: Office of Justice Programs (OJP)	<input type="radio"/>	<input type="radio"/>	<input type="radio"/>	<input type="radio"/>
U.S. Department of Justice: Office of Juvenile Justice and Delinquency Prevention (OJJDP)	<input type="radio"/>	<input type="radio"/>	<input type="radio"/>	<input type="radio"/>
U.S. Department of Labor (DOL)	<input type="radio"/>	<input type="radio"/>	<input type="radio"/>	<input type="radio"/>
Other (please specify)	<input type="radio"/>	<input type="radio"/>	<input type="radio"/>	<input type="radio"/>

27. In terms of your involvement in the National Forum, how helpful have these Federal partner agencies been, either for your agency or for you personally?

	N/A or No Contacts	Only a Little Helpful	Pretty Helpful	Extremely Helpful
Centers for Disease Control and Prevention (CDC)	<input type="radio"/>	<input type="radio"/>	<input type="radio"/>	<input type="radio"/>
U.S. Department of Education	<input type="radio"/>	<input type="radio"/>	<input type="radio"/>	<input type="radio"/>
U.S. Department of Health and Human Services (HHS)	<input type="radio"/>	<input type="radio"/>	<input type="radio"/>	<input type="radio"/>
U.S. Department of Health and Human Services: Administration for Children and Families	<input type="radio"/>	<input type="radio"/>	<input type="radio"/>	<input type="radio"/>
U.S. Department of Housing and Urban Development (HUD)	<input type="radio"/>	<input type="radio"/>	<input type="radio"/>	<input type="radio"/>
U.S. Department of Justice: Bureau of Justice Assistance (BJA)	<input type="radio"/>	<input type="radio"/>	<input type="radio"/>	<input type="radio"/>
U.S. Department of Justice: Community Oriented Policing Services (COPS Office)	<input type="radio"/>	<input type="radio"/>	<input type="radio"/>	<input type="radio"/>
U.S. Department of Justice: National Institute of Justice (NIJ)	<input type="radio"/>	<input type="radio"/>	<input type="radio"/>	<input type="radio"/>
U.S. Department of Justice: Office of Justice Programs (OJP)	<input type="radio"/>	<input type="radio"/>	<input type="radio"/>	<input type="radio"/>
U.S. Department of Justice: Office of Juvenile Justice and Delinquency Prevention (OJJDP)	<input type="radio"/>	<input type="radio"/>	<input type="radio"/>	<input type="radio"/>
U.S. Department of Labor (DOL)	<input type="radio"/>	<input type="radio"/>	<input type="radio"/>	<input type="radio"/>
Other (please specify) _____	<input type="radio"/>	<input type="radio"/>	<input type="radio"/>	<input type="radio"/>

National Forum Strategic Plan

Each city participating in the National Forum on Youth Violence Prevention was required to develop a strategic plan.

28. How involved were you in the development of your city's strategic plan?

- ☐ Not Involved and Not Familiar with it – If so, please continue on page 17.
- ☐ Not Involved but Definitely Familiar with it – If so, you're almost done.
- ☐ Involved Some – If so, you're almost done.
- ☐ Involved a Lot – If so, you're almost done.
- ☐ Don't Know / Not Sure – If so, you're almost done.

29. Please indicate to what extent you agree with the following statements about your city's strategic plan for the National Forum on Youth Violence Prevention.

	Agree Strongly	Agree Somewhat	Neutral	Disagree Somewhat	Disagree Strongly	Don't Know
Participating organizations in my city generally agree on what the strategic plan should include.	<input type="radio"/>	<input type="radio"/>	<input type="radio"/>	<input type="radio"/>	<input type="radio"/>	<input type="radio"/>
The strategic plan in my city has realistic goals.	<input type="radio"/>	<input type="radio"/>	<input type="radio"/>	<input type="radio"/>	<input type="radio"/>	<input type="radio"/>
Local officials in my city are NOT really data oriented.	<input type="radio"/>	<input type="radio"/>	<input type="radio"/>	<input type="radio"/>	<input type="radio"/>	<input type="radio"/>
The strategic plan in my city includes measurable objectives.	<input type="radio"/>	<input type="radio"/>	<input type="radio"/>	<input type="radio"/>	<input type="radio"/>	<input type="radio"/>
My city's plan will allow us to track our effectiveness accurately.	<input type="radio"/>	<input type="radio"/>	<input type="radio"/>	<input type="radio"/>	<input type="radio"/>	<input type="radio"/>
The strategic plan in my city was built from an analysis of recent youth crime trends.	<input type="radio"/>	<input type="radio"/>	<input type="radio"/>	<input type="radio"/>	<input type="radio"/>	<input type="radio"/>
The strategic plan in my city includes opportunities for early success.	<input type="radio"/>	<input type="radio"/>	<input type="radio"/>	<input type="radio"/>	<input type="radio"/>	<input type="radio"/>
The strategic plan in my city FAILS to utilize the experiences and resources of some potentially helpful organizations.	<input type="radio"/>	<input type="radio"/>	<input type="radio"/>	<input type="radio"/>	<input type="radio"/>	<input type="radio"/>
The strategic plan in my city incorporates the concerns and hopes of local residents and youth.	<input type="radio"/>	<input type="radio"/>	<input type="radio"/>	<input type="radio"/>	<input type="radio"/>	<input type="radio"/>

30. Please indicate how important the following factors were in your decision to participate personally in the National Forum on Youth Violence Prevention (NFYVP)?

	Not at all Important	Somewhat Important	Very Important	Don't Know
Being part of the NFYVP encourages more effective uses of data.	<input type="radio"/>	<input type="radio"/>	<input type="radio"/>	<input type="radio"/>
Being part of the NFYVP helps us to hold youth accountable.	<input type="radio"/>	<input type="radio"/>	<input type="radio"/>	<input type="radio"/>
Being part of the NFYVP enhances our organization's reputation.	<input type="radio"/>	<input type="radio"/>	<input type="radio"/>	<input type="radio"/>
Being part of the NFYVP encourages us to adopt a citywide focus.	<input type="radio"/>	<input type="radio"/>	<input type="radio"/>	<input type="radio"/>
Being part of the NFYVP facilitates more effective sharing of ideas.	<input type="radio"/>	<input type="radio"/>	<input type="radio"/>	<input type="radio"/>
Being part of the NFYVP helps to raise the profile of our work to prevent violence.	<input type="radio"/>	<input type="radio"/>	<input type="radio"/>	<input type="radio"/>
Being part of the NFYVP facilitates more effective sharing of data about youth.	<input type="radio"/>	<input type="radio"/>	<input type="radio"/>	<input type="radio"/>

31. Please indicate the extent to which the following barriers and obstacles may impede the work of the National Forum in your city.

	Not a Problem	Somewhat a Problem	Serious Problem	Don't Know
Lack of sustained engagement by federal officials.	<input type="radio"/>	<input type="radio"/>	<input type="radio"/>	<input type="radio"/>
Personality conflicts.	<input type="radio"/>	<input type="radio"/>	<input type="radio"/>	<input type="radio"/>
Internal turf conflicts between organizations involved in the National Forum.	<input type="radio"/>	<input type="radio"/>	<input type="radio"/>	<input type="radio"/>
Difficulties in sharing confidential information among partner organizations.	<input type="radio"/>	<input type="radio"/>	<input type="radio"/>	<input type="radio"/>
External turf conflicts between organizations involved in the National Forum and those not involved in the Forum.	<input type="radio"/>	<input type="radio"/>	<input type="radio"/>	<input type="radio"/>
Scarcity of federal funding.	<input type="radio"/>	<input type="radio"/>	<input type="radio"/>	<input type="radio"/>
Difficulty of professional groups understanding one another's standards and practices.	<input type="radio"/>	<input type="radio"/>	<input type="radio"/>	<input type="radio"/>
Lack of engagement by residents of target area.	<input type="radio"/>	<input type="radio"/>	<input type="radio"/>	<input type="radio"/>
Federal policies, laws, and regulations.	<input type="radio"/>	<input type="radio"/>	<input type="radio"/>	<input type="radio"/>
Federal officials do NOT support the goals of local jurisdictions.	<input type="radio"/>	<input type="radio"/>	<input type="radio"/>	<input type="radio"/>

Final Survey Questions

These final four survey questions will help us understand your affiliation as related to this survey. After these, you will have completed the survey!

32. Please read the following and check the statement that most closely describes your organization.

- ☐ 501(c)(3) nonprofit organization
- ☐ Applied for 501(c) (3) status, not yet received
- ☐ Branch of a larger 501(c)(3)
- ☐ Private company/firm (Not tax-exempt)
- ☐ Government agency
- ☐ Religious congregation (church, synagogue, mosque, etc.) but not a 501(c)(3)
- ☐ 501(c)(4)
- ☐ Other (please specify) _____

33. If you are part of an organization, does your organization provide services for youth or other individuals?

- ☐ No
- ☐ Yes
- ☐ Not part of an organization

34. How many paid employees (not including consultants) does your organization have?

- ☐ 1-5
- ☐ 6-10
- ☐ 11 and 50
- ☐ 51-100
- ☐ Over 100
- ☐ Not Part of an Organization

35. What range best describes your annual operating budget?

- ☐ Below \$25,000
- ☐ \$25,000 - \$100,000
- ☐ \$100,001 - \$500,00
- ☐ \$500,001 - \$1 million
- ☐ Over \$1 million
- ☐ Not part of an organization

Thank You!

You have finished the survey.

Again, if you have any questions or concerns about the survey, we encourage you to contact the survey coordinator:

Ms. Kathleen Tomberg
Research and Evaluation Center
John Jay College of Criminal Justice
555 West 57th Street, Suite 605
New York, NY 10019
212.484.1331
ktomberg@jjay.cuny.edu

Thank you very much for your participation in this survey. Your answers will help to improve the understanding and future efforts of your city and those of the federal partners involved in the National Forum on Youth Violence Prevention.

Research and Evaluation Center

A Member of the Research Consortium of
John Jay College of Criminal Justice, City of University of New York
555 West 57th Street , Suite 605 | New York, NY 10019
212-237-8302 | www.johnjayresearch.org/rec | rec@jjay.cuny.edu



The Research and Evaluation Center at John Jay College of Criminal Justice, City University of New York (CUNY), is an applied research organization established in 1975 to provide members of the academic community of John Jay College with opportunities to respond to the research needs of justice practitioners in New York City, New York State, and the nation. As a member of the Research Consortium of John Jay College, the Center operates under the supervision of the Office for the Advancement of Research (OAR).

This resource was prepared by the author(s) using Federal funds provided by the U.S. Department of Justice. Opinions or points of view expressed are those of the author(s) and do not necessarily reflect the official position or policies of the U.S. Department of Justice